

ATTACHMENT 3
WALKDOWN CHECKLISTS

Status: Y N U

Seismic Walkdown Checklist (SWC)

Equipment ID No.: 2PO5430

Equipment Class: (10) Air Handlers

Equipment Description: DIESEL RM 2A SUPPLY DAMPER

Project: CCNPP 2 SWEL

Location (Bldg, Elev, Room/Area): AUX, 45.00 ft, CAL-AB-422

Manufacturer/Model:

Instructions for Completing Checklist

This checklist may be used to document the results of the Seismic Walkdown of an item of equipment on the SWEL. The space below each of the following questions may be used to record the results of judgments and findings. Additional space is provided at the end of this checklist for documenting other comments.

Anchorage

1. Is anchorage configuration verification required (i.e., is the item one of the 50% of SWEL items requiring such verification)? Yes

2. Is the anchorage free of bent, broken, missing or loose hardware? Yes

3. Is the anchorage free of corrosion that is more than mild surface oxidation? Yes

4. Is the anchorage free of visible cracks in the concrete near the anchors? Yes

5. Is the anchorage configuration consistent with plant documentation? (Note: This question only applies if the item is one of the 50% for which an anchorage configuration verification is required.) No
Need plant documentation to determine if anchorage is consistent with as-built sketch. CR-2012-009778

6. Based on the above anchorage evaluations, is the anchorage free of potentially adverse seismic conditions? No
Need plant documentation to determine if anchorage is consistent with as-built sketch.

ATTACHMENT 3
WALKDOWN CHECKLISTS

Status: Y N U

Seismic Walkdown Checklist (SWC)

Equipment ID No.: 2PO5430

Equipment Class: (10) Air Handlers

Equipment Description: DIESEL RM 2A SUPPLY DAMPER

Interaction Effects

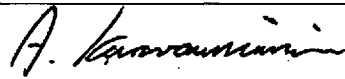
7. Are soft targets free from impact by nearby equipment or structures? Yes
8. Are overhead equipment, distribution systems, ceiling tiles and lighting, and masonry block walls not likely to collapse onto the equipment? Yes
9. Do attached lines have adequate flexibility to avoid damage? Yes
10. Based on the above seismic interaction evaluations, is equipment free of potentially adverse seismic interaction effects? Yes
-

Other Adverse Conditions

11. Have you looked for and found no adverse seismic conditions that could adversely affect the safety functions of the equipment? Yes
-

Comments

Evaluated by:



A. Karavoussianis

Date: 11/09/2012



C. Figliolini

11/09/2012

Photos

ATTACHMENT 3
WALKDOWN CHECKLISTS

Status: Y N U

Seismic Walkdown Checklist (SWC)

Equipment ID No.: 2PO5430

Equipment Class: (10) Air Handlers

Equipment Description: DIESEL RM 2A SUPPLY DAMPER



2PO5430 8-13-12 228



2PO5430 8-13-12 229



2PO5430 8-13-12 230



2PO5430 8-13-12 233

ATTACHMENT 3
WALKDOWN CHECKLISTS

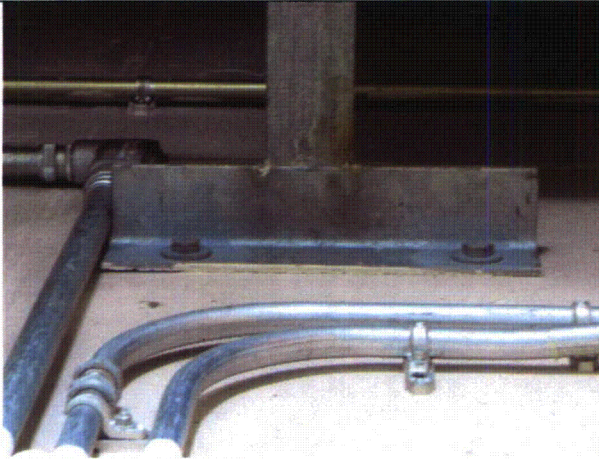
Status: Y N U

Seismic Walkdown Checklist (SWC)

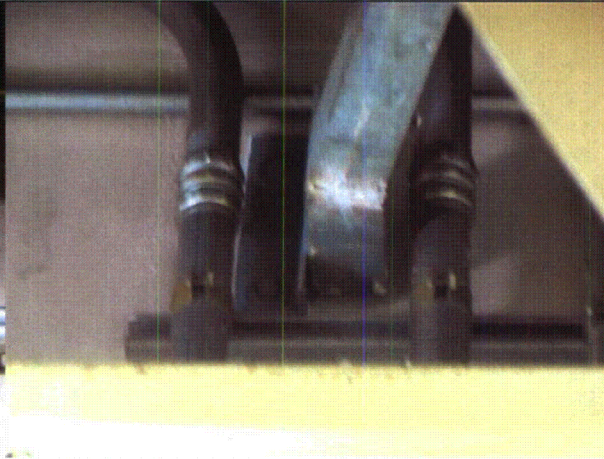
Equipment ID No.: 2PO5430

Equipment Class: (10) Air Handlers

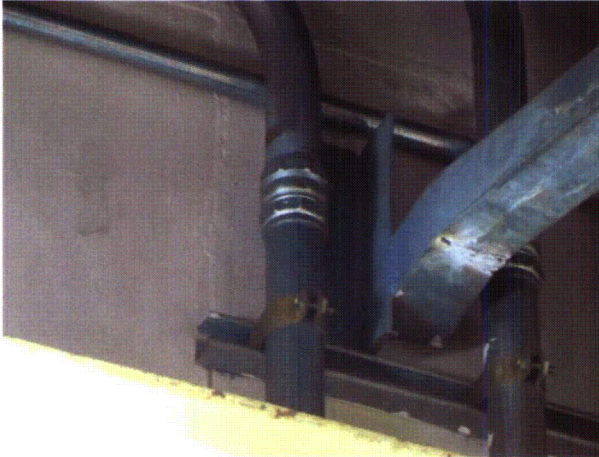
Equipment Description: DIESEL RM 2A SUPPLY DAMPER



2PO5430 8-13-12 234



2PO5430 8-13-12 235



2PO5430 8-13-12 236



2PO5430 8-13-12 237

ATTACHMENT 3
WALKDOWN CHECKLISTS

Status: Y N U

Seismic Walkdown Checklist (SWC)

Equipment ID No.: 2PT5313A

Equipment Class: (20) Instrumentation and Control Panels and Cabinets

Equipment Description: CONTMT 21 PRESS TO SIAS

Project: CCNPP 2 SWEL

Location (Bldg, Elev, Room/Area): AUX, 45.00 ft, CAL-AB-409

Manufacturer/Model: _____

Instructions for Completing Checklist

This checklist may be used to document the results of the Seismic Walkdown of an item of equipment on the SWEL. The space below each of the following questions may be used to record the results of judgments and findings. Additional space is provided at the end of this checklist for documenting other comments.

Anchorage

- | | | |
|------|--|-----|
| 1. | Is anchorage configuration verification required (i.e., is the item one of the 50% of SWEL items requiring such verification)? | Yes |
|
 | | |
| 2. | Is the anchorage free of bent, broken, missing or loose hardware?

<i>Measured 3/4" F-F anchor bolt nuts in a 4-1/2" x 6-1/2" c/c anchor bolt pattern.
Only 3" long weld on vertical side of channel, not fully welded as shown on typical detail.</i> | Yes |
|
 | | |
| 3. | Is the anchorage free of corrosion that is more than mild surface oxidation?

<i>Oxidation on bolts and corrosion on base plate. The left base plate is flaking.
CR-2012-009661</i> | No |
|
 | | |
| 4. | Is the anchorage free of visible cracks in the concrete near the anchors? | Yes |
|
 | | |
| 5. | Is the anchorage configuration consistent with plant documentation? (Note: This question only applies if the item is one of the 50% for which an anchorage configuration verification is required.)

<i>Anchorage verified by Drawings 66944SH0002 and 91005(J-104). The web of the support channel is not fully welded to the wall anchor plates.
The channel's web weld is approximately 3" long instead of being continuous.
CR-2012-010259</i> | No |
|
 | | |
| 6. | Based on the above anchorage evaluations, is the anchorage free of potentially adverse seismic conditions? | No |
-

ATTACHMENT 3
WALKDOWN CHECKLISTS

Status: Y N U

Seismic Walkdown Checklist (SWC)

Equipment ID No.: 2PT5313A

Equipment Class: (20) Instrumentation and Control Panels and Cabinets

Equipment Description: CONTMT 21 PRESS TO SIAS

Interaction Effects

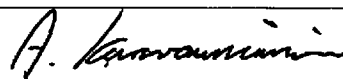
7. Are soft targets free from impact by nearby equipment or structures? Yes
8. Are overhead equipment, distribution systems, ceiling tiles and lighting, and masonry block walls not likely to collapse onto the equipment? Yes
*Observed a roof drain system with Victaulic coupling directly above PTs.
Drain pipe is normally empty and therefore judged not to be a credible hazard.*
9. Do attached lines have adequate flexibility to avoid damage? Yes
10. Based on the above seismic interaction evaluations, is equipment free of potentially adverse seismic interaction effects? Yes
-

Other Adverse Conditions

11. Have you looked for and found no adverse seismic conditions that could adversely affect the safety functions of the equipment? Yes
-

Comments

Evaluated by:



A. Karavoussianis

Date: 11/09/2012



C. Figliolini

11/09/2012

ATTACHMENT 3
WALKDOWN CHECKLISTS

Status: Y N U

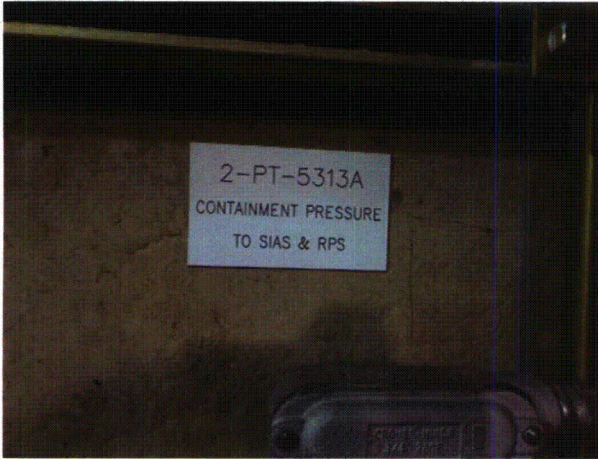
Seismic Walkdown Checklist (SWC)

Equipment ID No.: 2PT5313A

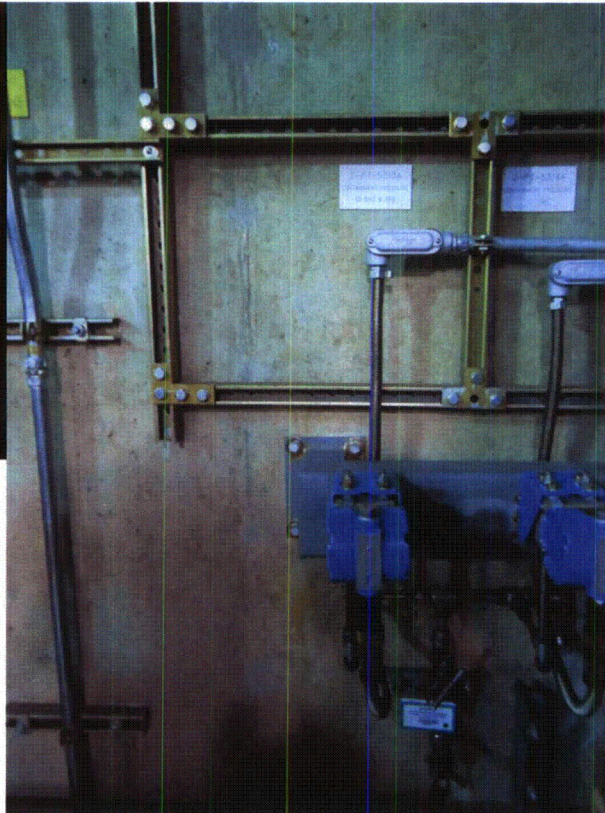
Equipment Class: (20) Instrumentation and Control Panels and Cabinets

Equipment Description: CONTMT 21 PRESS TO SIAS

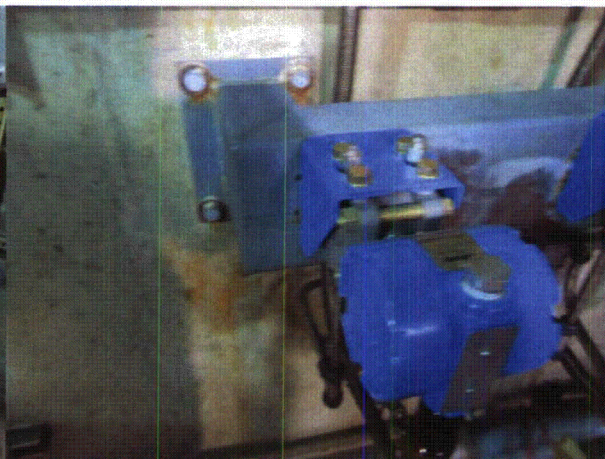
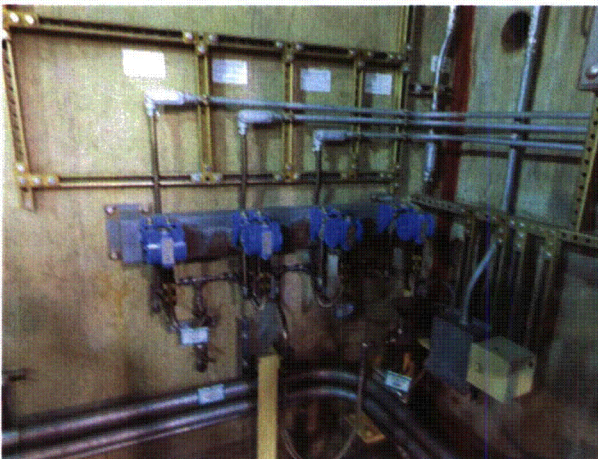
Photos



2PT5313A 8-7-12 030



2PT5313A 8-7-12 031



ATTACHMENT 3
WALKDOWN CHECKLISTS

Status: Y N U

Seismic Walkdown Checklist (SWC)

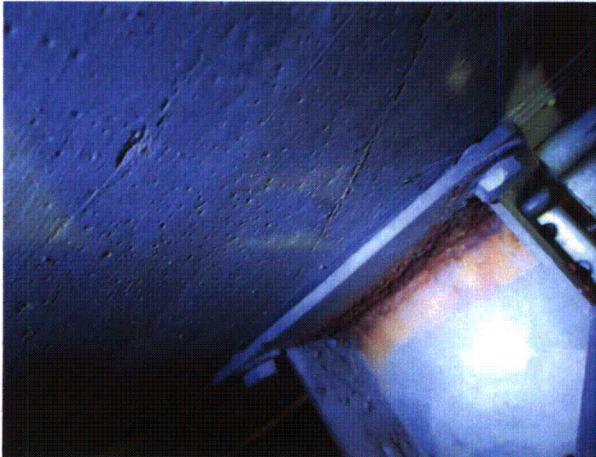
Equipment ID No.: 2PT5313A

Equipment Class: (20) Instrumentation and Control Panels and Cabinets

Equipment Description: CONTMT 21 PRESS TO SIAS

2PT5313A 8-7-12 032

2PT5313A 8-7-12 033



2PT5313A 8-7-12 034



2PT5313A 8-7-12 035

ATTACHMENT 3
WALKDOWN CHECKLISTS

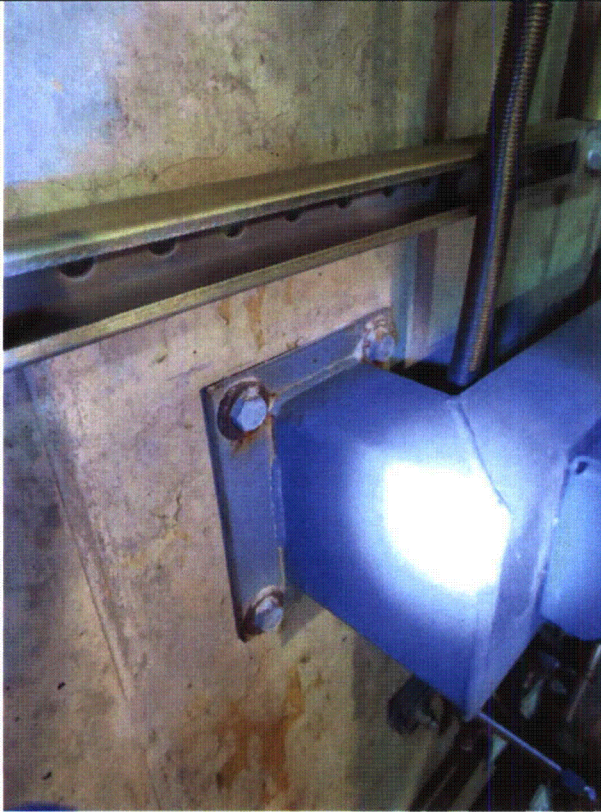
Status: Y N U

Seismic Walkdown Checklist (SWC)

Equipment ID No.: 2PT5313A

Equipment Class: (20) Instrumentation and Control Panels and Cabinets

Equipment Description: CONTMT 21 PRESS TO SIAS



2PT5313A 8-7-12 036

ATTACHMENT 3
WALKDOWN CHECKLISTS

Status: Y N U

Seismic Walkdown Checklist (SWC)

Equipment ID No.: 2PT5313B

Equipment Class: (20) Instrumentation and Control Panels and Cabinets

Equipment Description: CONTMT 21 PRESS TO SIAS

Project: CCNPP 2 SWEL

Location (Bldg, Elev, Room/Area): AUX, 45.00 ft, CAL-AB-409

Manufacturer/Model: _____

Instructions for Completing Checklist

This checklist may be used to document the results of the Seismic Walkdown of an item of equipment on the SWEL. The space below each of the following questions may be used to record the results of judgments and findings. Additional space is provided at the end of this checklist for documenting other comments.

Anchorage

1. Is anchorage configuration verification required (i.e., is the item one of the 50% of SWEL items requiring such verification)? No

 2. Is the anchorage free of bent, broken, missing or loose hardware? No
Missing anchor bolt washer. CR-2012-009624

 3. Is the anchorage free of corrosion that is more than mild surface oxidation? No
*Corrosion and oxidation on Anchor Bolt and plate.
Base plate is flaking on both sides. CR-2012-009622*

 4. Is the anchorage free of visible cracks in the concrete near the anchors? Yes

 5. Is the anchorage configuration consistent with plant documentation? (Note: This question only applies if the item is one of the 50% for which an anchorage configuration verification is required.) Not Applicable

 6. Based on the above anchorage evaluations, is the anchorage free of potentially adverse seismic conditions? No
-

ATTACHMENT 3
WALKDOWN CHECKLISTS

Status: Y N U

Seismic Walkdown Checklist (SWC)

Equipment ID No.: 2PT5313B

Equipment Class: (20) Instrumentation and Control Panels and Cabinets

Equipment Description: CONTMT 21 PRESS TO SIAS


Interaction Effects


7. Are soft targets free from impact by nearby equipment or structures? Yes
-
8. Are overhead equipment, distribution systems, ceiling tiles and lighting, and masonry block walls not likely to collapse onto the equipment? Yes
*Observed a roof drain system with Victaulic coupling directly above PTs.
Drain pipe is normally empty and therefore judged not to be a credible hazard.*
9. Do attached lines have adequate flexibility to avoid damage? Yes
-
10. Based on the above seismic interaction evaluations, is equipment free of potentially adverse seismic interaction effects? Yes
-

Other Adverse Conditions

11. Have you looked for and found no adverse seismic conditions that could adversely affect the safety functions of the equipment? Yes
-

Comments

Evaluated by:  A. Karavoussianis Date: 11/09/2012

 C. Figliolini 11/09/2012

Photos

ATTACHMENT 3
WALKDOWN CHECKLISTS

Status: Y N U

Seismic Walkdown Checklist (SWC)

Equipment ID No.: 2PT5313B

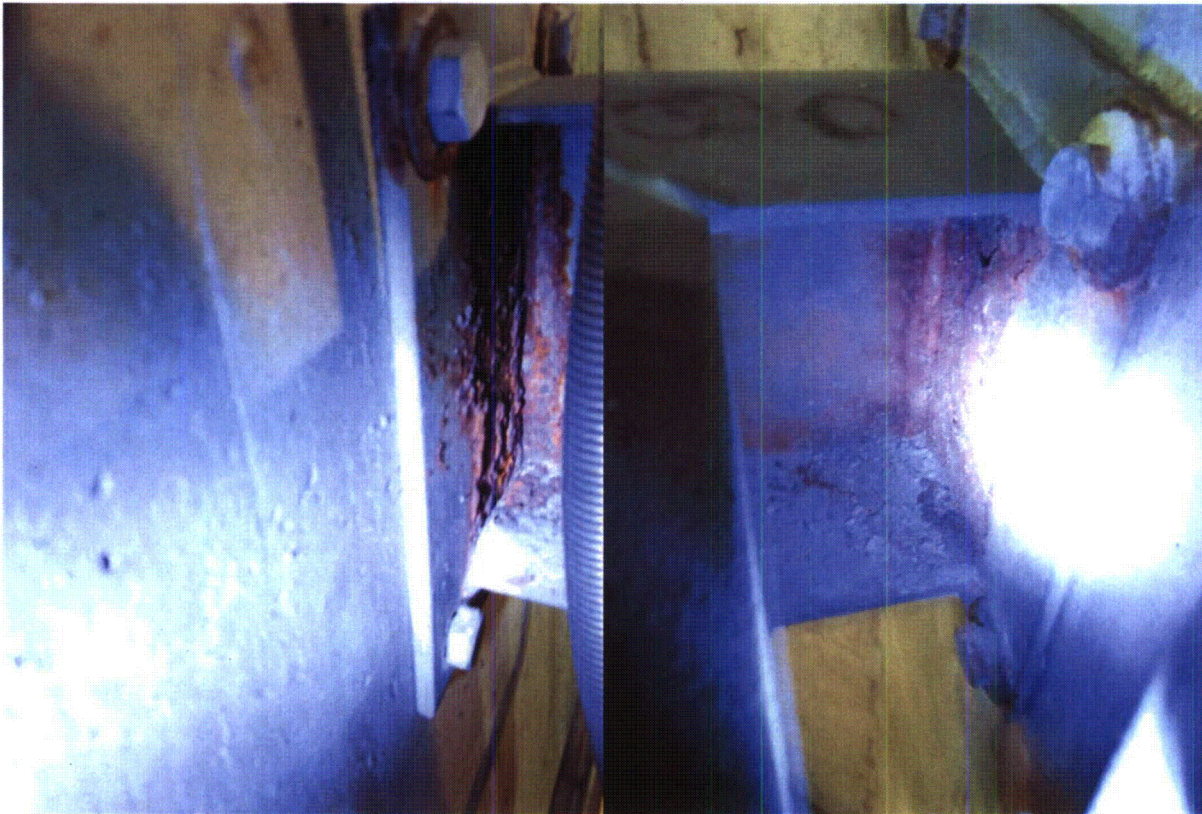
Equipment Class: (20) Instrumentation and Control Panels and Cabinets

Equipment Description: CONTMT 21 PRESS TO SIAS



2PT5313B 8-7-12 037

2PT5313B 8-7-12 039



2PT5313B 8-7-12 040

2PT5313B 8-7-12 042

ATTACHMENT 3
WALKDOWN CHECKLISTS

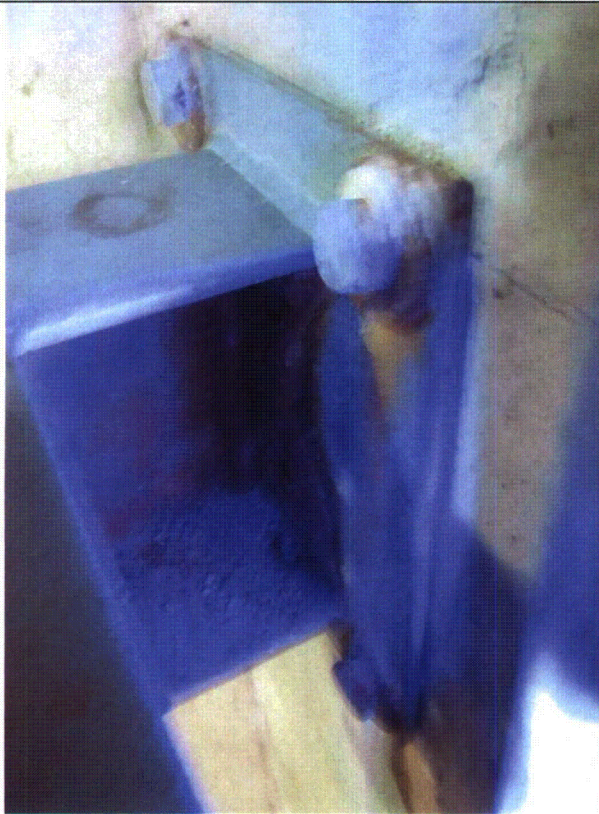
Status: Y N U

Seismic Walkdown Checklist (SWC)

Equipment ID No.: 2PT5313B

Equipment Class: (20) Instrumentation and Control Panels and Cabinets

Equipment Description: CONTMT 21 PRESS TO SIAS



2PT5313B 8-7-12 043



2PT5313B 8-7-12 044

ATTACHMENT 3
WALKDOWN CHECKLISTS

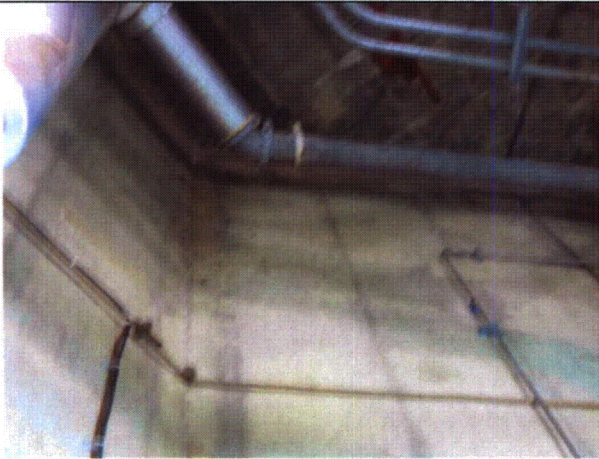
Status: Y N U

Seismic Walkdown Checklist (SWC)

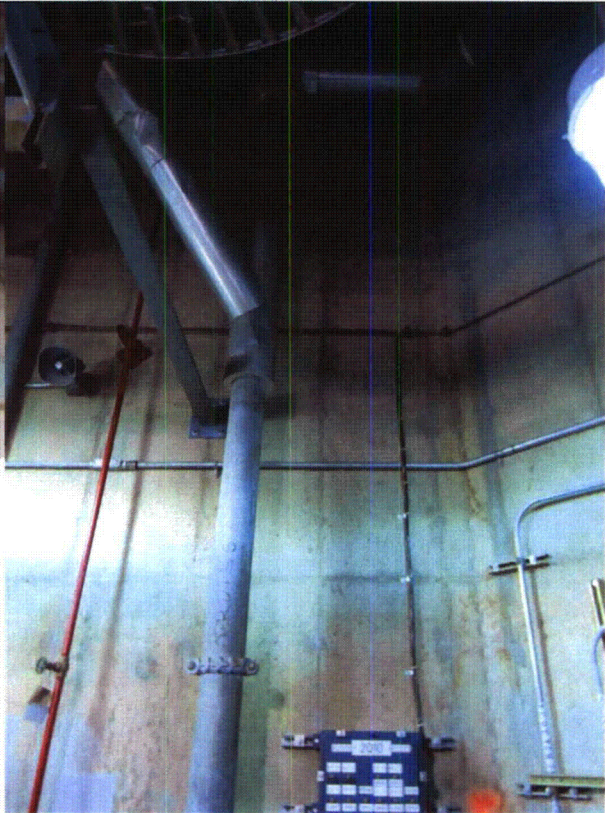
Equipment ID No.: 2PT5313B

Equipment Class: (20) Instrumentation and Control Panels and Cabinets

Equipment Description: CONTMT 21 PRESS TO SIAS



2PT5313B 8-7-12 045



2PT5313B 8-7-12 046

ATTACHMENT 3
WALKDOWN CHECKLISTS

Status: Y N U

Seismic Walkdown Checklist (SWC)

Equipment ID No.: 2PT5313B

Equipment Class: (20) Instrumentation and Control Panels and Cabinets

Equipment Description: CONTMT 21 PRESS TO SIAS



2PT5313B 8-7-12 047

ATTACHMENT 3
WALKDOWN CHECKLISTS

Status: Y N U

Seismic Walkdown Checklist (SWC)

Equipment ID No.: 2PT5315C

Equipment Class: (20) Instrumentation and Control Panels and Cabinets

Equipment Description: CONTMT 21 PRESS TO CIS

Project: CCNPP 2 SWEL

Location (Bldg, Elev, Room/Area): AUX, 45.00 ft, CAL-AB-414

Manufacturer/Model: _____

Instructions for Completing Checklist

This checklist may be used to document the results of the Seismic Walkdown of an item of equipment on the SWEL. The space below each of the following questions may be used to record the results of judgments and findings. Additional space is provided at the end of this checklist for documenting other comments.

Anchorage

1. Is anchorage configuration verification required (i.e., is the item one of the 50% of SWEL items requiring such verification)? No

2. Is the anchorage free of bent, broken, missing or loose hardware? No
*Bottom bolts on right side not engaged.
Only 3" long weld on vertical side of channel, not fully welded as shown on typical detail. CR -2012-009754*
3. Is the anchorage free of corrosion that is more than mild surface oxidation? Yes

4. Is the anchorage free of visible cracks in the concrete near the anchors? Yes

5. Is the anchorage configuration consistent with plant documentation? (Note: This question only applies if the item is one of the 50% for which an anchorage configuration verification is required.) Not Applicable

6. Based on the above anchorage evaluations, is the anchorage free of potentially adverse seismic conditions? No

ATTACHMENT 3
WALKDOWN CHECKLISTS

Status: Y N U

Seismic Walkdown Checklist (SWC)

Equipment ID No.: 2PT5315C

Equipment Class: (20) Instrumentation and Control Panels and Cabinets

Equipment Description: CONTMT 21 PRESS TO CIS


Interaction Effects


7. Are soft targets free from impact by nearby equipment or structures? Yes
8. Are overhead equipment, distribution systems, ceiling tiles and lighting, and masonry block walls not likely to collapse onto the equipment? Yes
9. Do attached lines have adequate flexibility to avoid damage? Yes
10. Based on the above seismic interaction evaluations, is equipment free of potentially adverse seismic interaction effects? Yes
-

Other Adverse Conditions

11. Have you looked for and found no adverse seismic conditions that could adversely affect the safety functions of the equipment? Yes
-

Comments

Evaluated by:  A. Karavoussianis Date: 11/09/2012

 11/09/2012

C. Figliolini

Photos

ATTACHMENT 3
WALKDOWN CHECKLISTS

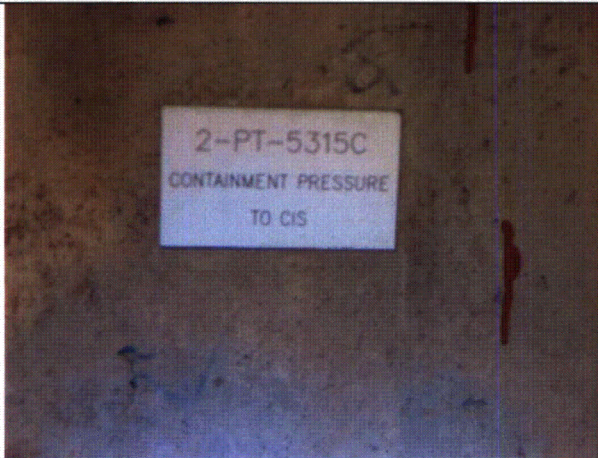
Status: Y N U

Seismic Walkdown Checklist (SWC)

Equipment ID No.: 2PT5315C

Equipment Class: (20) Instrumentation and Control Panels and Cabinets

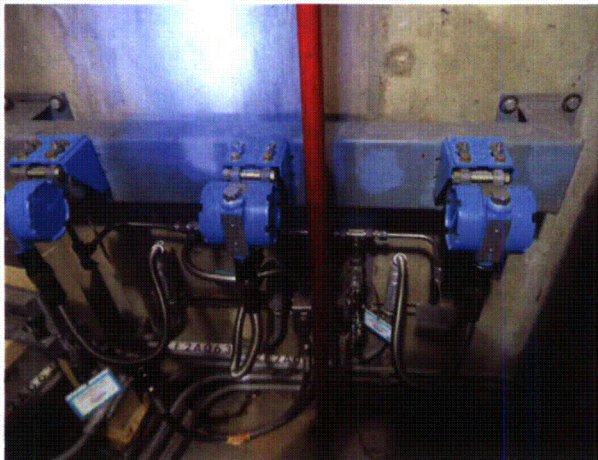
Equipment Description: CONTMT 21 PRESS TO CIS



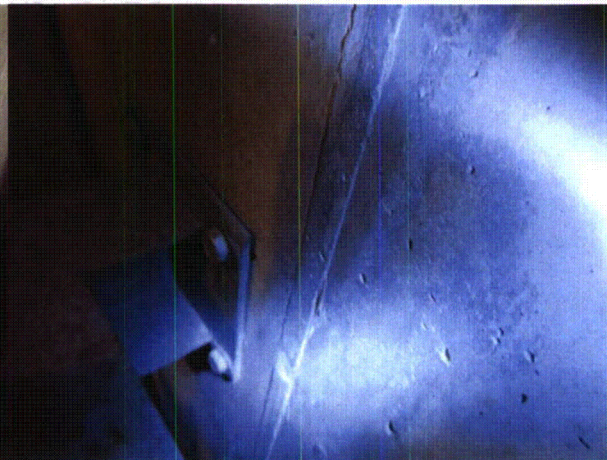
2PT5315C 8-7-12 061



2PT5315C 8-7-12 062



2PT5315C 8-7-12 064



2PT5315C 8-7-12 065

ATTACHMENT 3
WALKDOWN CHECKLISTS

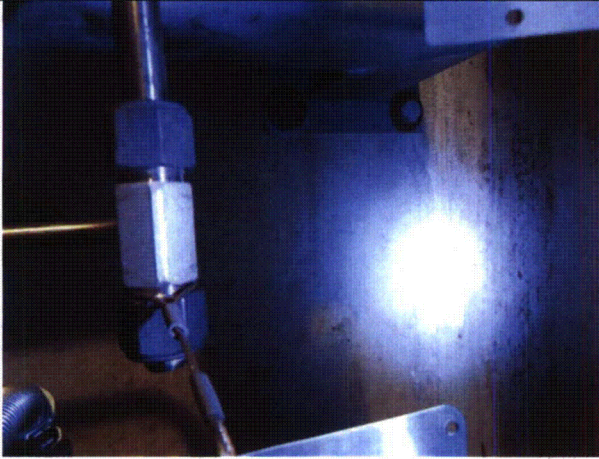
Status: Y N U

Seismic Walkdown Checklist (SWC)

Equipment ID No.: 2PT5315C

Equipment Class: (20) Instrumentation and Control Panels and Cabinets

Equipment Description: CONTMT 21 PRESS TO CIS



2PT5315C 8-7-12 067

ATTACHMENT 3
WALKDOWN CHECKLISTS

Status: Y N U

Seismic Walkdown Checklist (SWC)

Equipment ID No.: 2PT5315D

Equipment Class: (20) Instrumentation and Control Panels and Cabinets

Equipment Description: CONTMT 21 PRESS TO CIS

Project: CCNPP 2 SWEL

Location (Bldg, Elev, Room/Area): AUX, 45.00 ft, CAL-AB-414

Manufacturer/Model: _____

Instructions for Completing Checklist

This checklist may be used to document the results of the Seismic Walkdown of an item of equipment on the SWEL. The space below each of the following questions may be used to record the results of judgments and findings. Additional space is provided at the end of this checklist for documenting other comments.

Anchorage

1. Is anchorage configuration verification required (i.e., is the item one of the 50% of SWEL items requiring such verification)? Yes

2. Is the anchorage free of bent, broken, missing or loose hardware? Yes

3. Is the anchorage free of corrosion that is more than mild surface oxidation? Yes

4. Is the anchorage free of visible cracks in the concrete near the anchors? Yes

5. Is the anchorage configuration consistent with plant documentation? (Note: This question only applies if the item is one of the 50% for which an anchorage configuration verification is required.) No
Anchored by 4 x 5/8" flat head screw or 9/16" F-F headed screws (i.e. 3/8" nominal diameter bolts) in a 4.5" x 6.5" bolt pattern with only 3" long weld on-vertical side of channel, not fully welded as shown on typical detail. CR-2012-009714

Anchorage verified by drawings 66578 sheet 2 and 91005 (J-104). The web of the support channel is not fully welded to the wall anchor plates as shown on 91005.

ATTACHMENT 3
WALKDOWN CHECKLISTS

Status: Y N U

Seismic Walkdown Checklist (SWC)

Equipment ID No.: 2PT5315D

Equipment Class: (20) Instrumentation and Control Panels and Cabinets

Equipment Description: CONTMT 21 PRESS TO CIS

-
6. Based on the above anchorage evaluations, is the anchorage free of potentially adverse seismic conditions? No

Interaction Effects

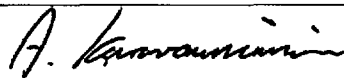
7. Are soft targets free from impact by nearby equipment or structures? Yes
8. Are overhead equipment, distribution systems, ceiling tiles and lighting, and masonry block walls not likely to collapse onto the equipment?
HVAC with adequate supports judged not a seismic concern. Yes
9. Do attached lines have adequate flexibility to avoid damage? Yes
10. Based on the above seismic interaction evaluations, is equipment free of potentially adverse seismic interaction effects? Yes

Other Adverse Conditions

11. Have you looked for and found no adverse seismic conditions that could adversely affect the safety functions of the equipment? Yes

Comments

Evaluated by:



A. Karavoussianis

Date: 11/09/2012

ATTACHMENT 3
WALKDOWN CHECKLISTS

Status: Y N U

Seismic Walkdown Checklist (SWC)

Equipment ID No.: 2PT5315D

Equipment Class: (20) Instrumentation and Control Panels and Cabinets

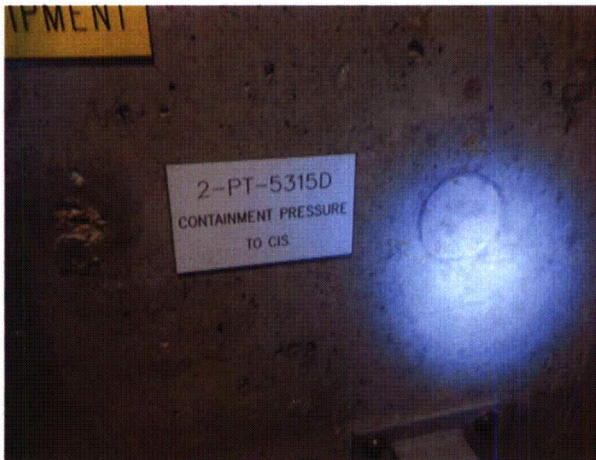
Equipment Description: CONTMT 21 PRESS TO CIS



C. Figliolini

11/09/2012

Photos



2PT5315D 8-7-12 068



2PT5315D 8-7-12 069

ATTACHMENT 3
WALKDOWN CHECKLISTS

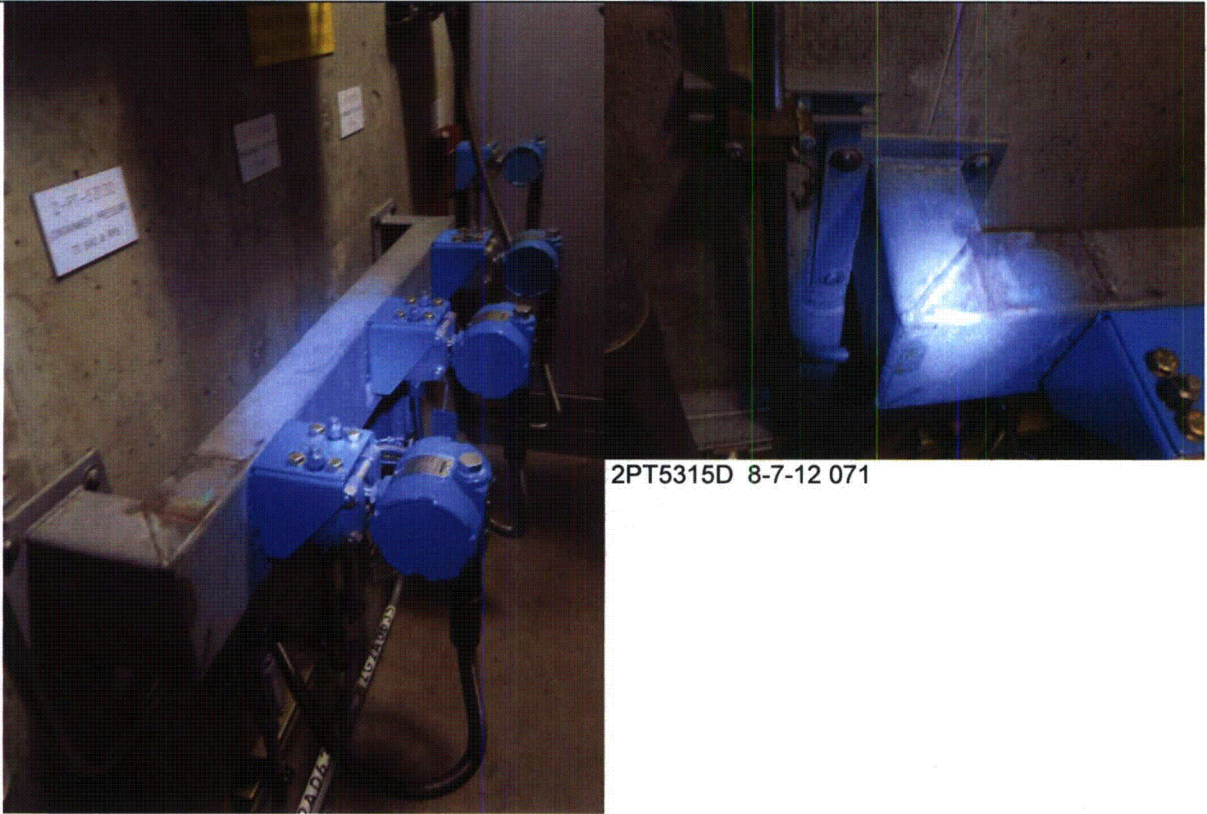
Status: Y N U

Seismic Walkdown Checklist (SWC)

Equipment ID No.: 2PT5315D

Equipment Class: (20) Instrumentation and Control Panels and Cabinets

Equipment Description: CONTMT 21 PRESS TO CIS



2PT5315D 8-7-12 071

2PT5315D 8-7-12 070

ATTACHMENT 3
WALKDOWN CHECKLISTS

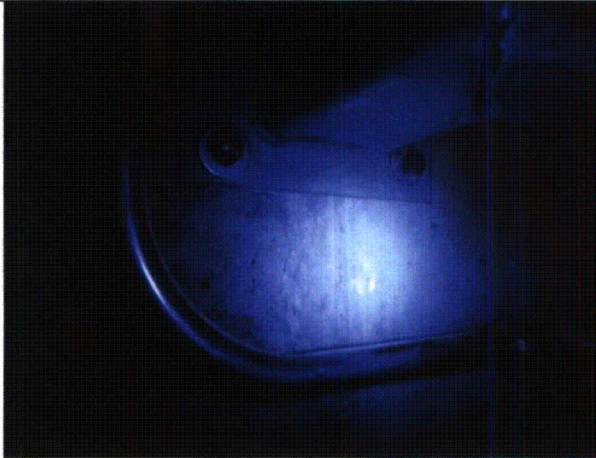
Status: Y N U

Seismic Walkdown Checklist (SWC)

Equipment ID No.: 2PT5315D

Equipment Class: (20) Instrumentation and Control Panels and Cabinets

Equipment Description: CONTMT 21 PRESS TO CIS



2PT5315D 8-7-12 072



2PT5315D 8-7-12 073

ATTACHMENT 3
WALKDOWN CHECKLISTS

Status: Y N U

Seismic Walkdown Checklist (SWC)

Equipment ID No.: 2PUMPAFWMD23

Equipment Class: (5) Horizontal Pumps

Equipment Description: 23 AUX FW MTR DRIVEN PP

Project: CCNPP 2 SWEL

Location (Bldg, Elev, Room/Area): AUX, 5.00 ft, CAL-AB-205

Manufacturer/Model: _____

Instructions for Completing Checklist

This checklist may be used to document the results of the Seismic Walkdown of an item of equipment on the SWEL. The space below each of the following questions may be used to record the results of judgments and findings. Additional space is provided at the end of this checklist for documenting other comments.

Anchorage

1. Is anchorage configuration verification required (i.e., is the item one of the 50% of SWEL items requiring such verification)? Yes

2. Is the anchorage free of bent, broken, missing or loose hardware? Yes

3. Is the anchorage free of corrosion that is more than mild surface oxidation? Yes

4. Is the anchorage free of visible cracks in the concrete near the anchors? Yes
There are no cracks in concrete, but there are cracks and chips in grout. This condition is judged not to adversely affect the anchorage.

5. Is the anchorage configuration consistent with plant documentation? (Note: This question only applies if the item is one of the 50% for which an anchorage configuration verification is required.) Yes
Anchorage is consistent with drawings 63817 (C-617) and 61671 (C-171).

6. Based on the above anchorage evaluations, is the anchorage free of potentially adverse seismic conditions? Yes

ATTACHMENT 3
WALKDOWN CHECKLISTS

Status: Y N U

Seismic Walkdown Checklist (SWC)

Equipment ID No.: 2PUMPAFWMD23

Equipment Class: (5) Horizontal Pumps

Equipment Description: 23 AUX FW MTR DRIVEN PP

Interaction Effects

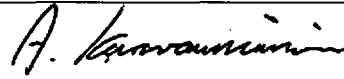
7. Are soft targets free from impact by nearby equipment or structures? Yes
8. Are overhead equipment, distribution systems, ceiling tiles and lighting, and masonry block walls not likely to collapse onto the equipment? Yes
9. Do attached lines have adequate flexibility to avoid damage? Yes
10. Based on the above seismic interaction evaluations, is equipment free of potentially adverse seismic interaction effects? Yes
-

Other Adverse Conditions

11. Have you looked for and found no adverse seismic conditions that could adversely affect the safety functions of the equipment? Yes
-

Comments

Evaluated by:



A. Karavoussianis

Date: 11/09/2012



C. Figliolini

11/09/2012

Photos

ATTACHMENT 3
WALKDOWN CHECKLISTS

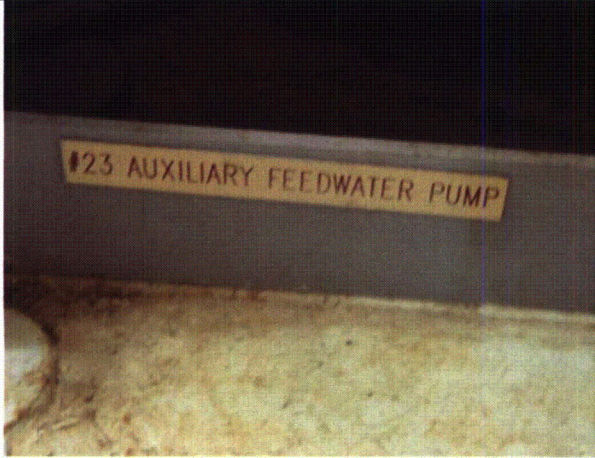
Status: Y N U

Seismic Walkdown Checklist (SWC)

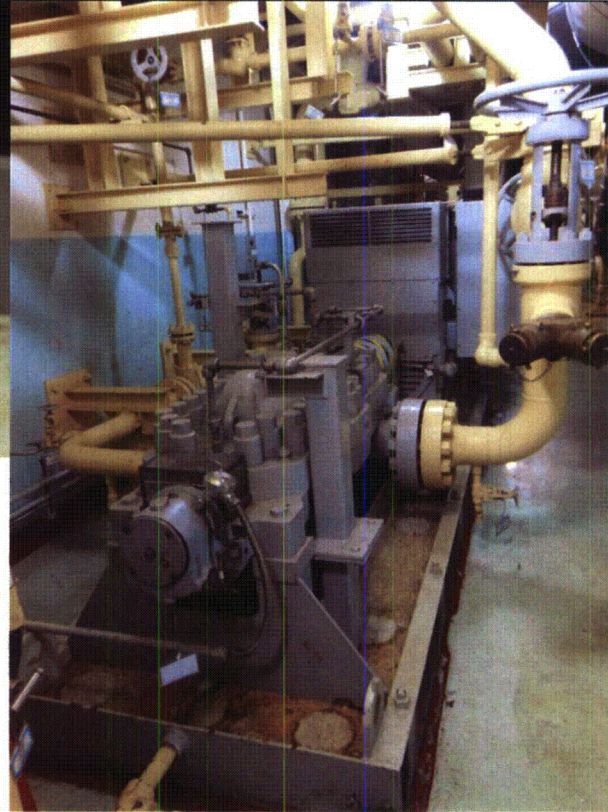
Equipment ID No.: 2PUMPAFWMD23

Equipment Class: (5) Horizontal Pumps

Equipment Description: 23 AUX FW MTR DRIVEN PP



2PUMPAFWMD23 8-6-12 304



2PUMPAFWMD23 8-6-12 305

ATTACHMENT 3
WALKDOWN CHECKLISTS

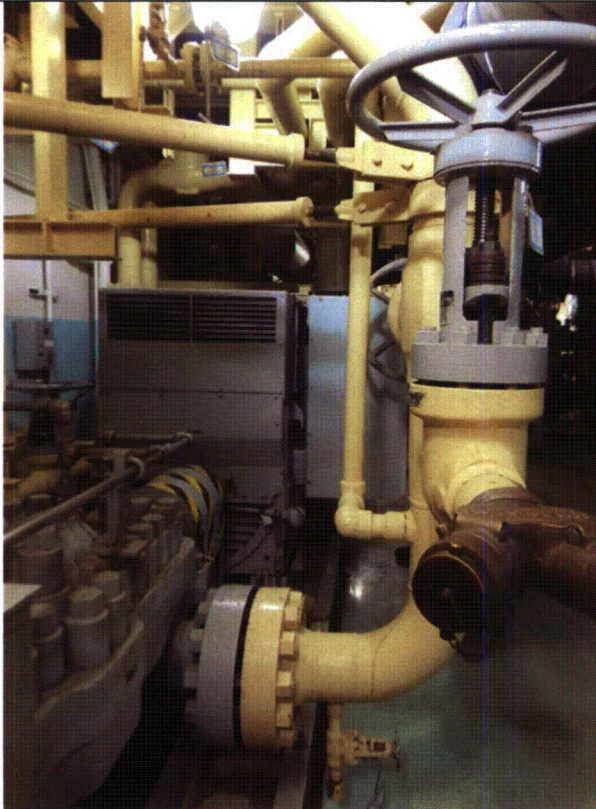
Status: Y N U

Seismic Walkdown Checklist (SWC)

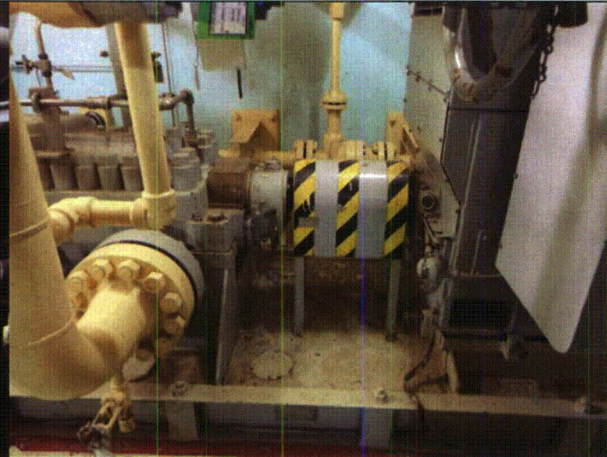
Equipment ID No.: 2PUMPAFWMD23

Equipment Class: (5) Horizontal Pumps

Equipment Description: 23 AUX FW MTR DRIVEN PP



2PUMPAFWMD23 8-6-12 306



2PUMPAFWMD23 8-6-12 307

ATTACHMENT 3

WALKDOWN CHECKLISTS

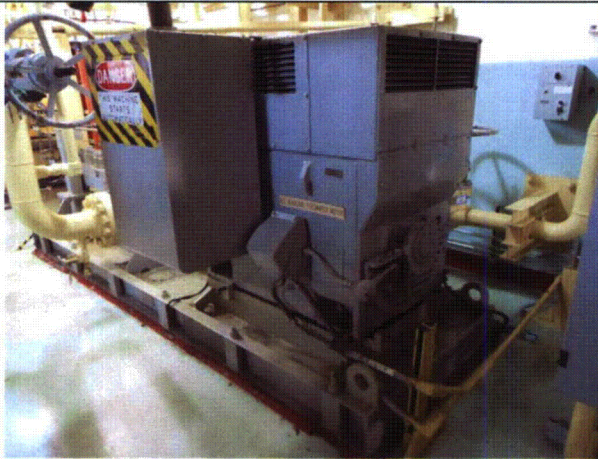
Status: Y N U

Seismic Walkdown Checklist (SWC)

Equipment ID No.: 2PUMPAFWMD23

Equipment Class: (5) Horizontal Pumps

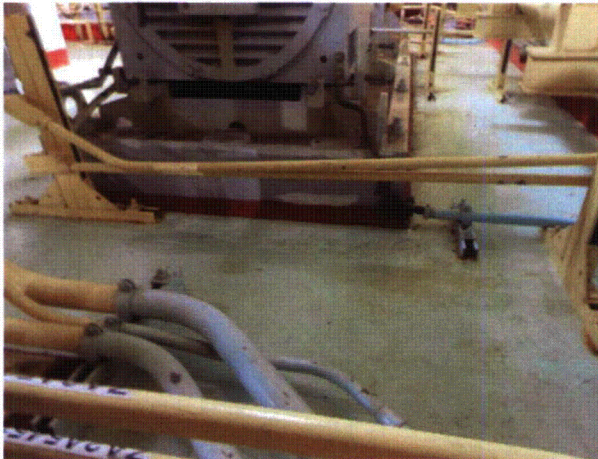
Equipment Description: 23 AUX FW MTR DRIVEN PP



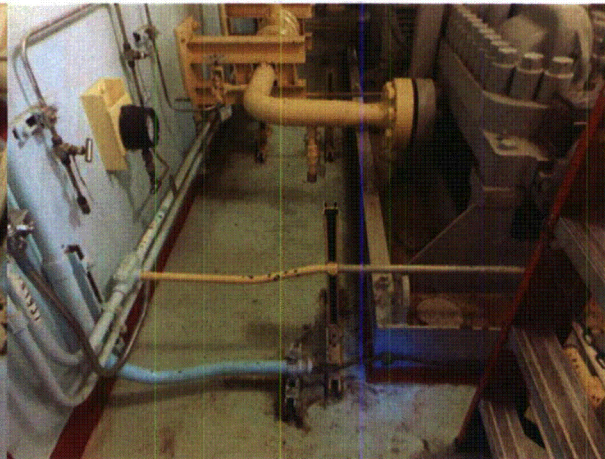
2PUMPAFWMD23 8-6-12 308



2PUMPAFWMD23 8-6-12 309



2PUMPAFWMD23 8-6-12 310



2PUMPAFWMD23 8-6-12 311

ATTACHMENT 3
WALKDOWN CHECKLISTS

Status: Y N U

Seismic Walkdown Checklist (SWC)

Equipment ID No.: 2PUMPAFWMD23

Equipment Class: (5) Horizontal Pumps

Equipment Description: 23 AUX FW MTR DRIVEN PP



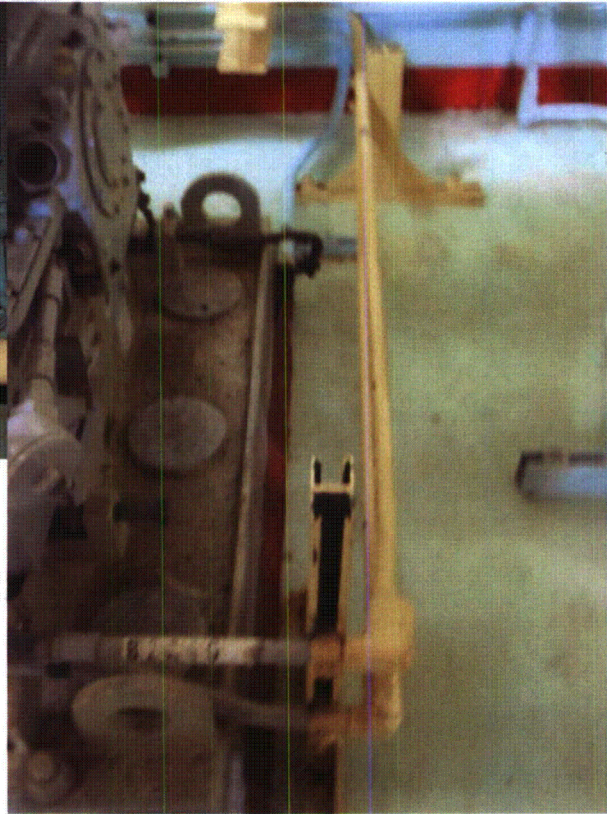
2PUMPAFWMD23 8-6-12 312



2PUMPAFWMD23 8-6-12 313



2PUMPAFWMD23 8-6-12 315



2PUMPAFWMD23 8-6-12 316

ATTACHMENT 3
WALKDOWN CHECKLISTS

Status: Y N U

Seismic Walkdown Checklist (SWC)

Equipment ID No.: 2PUMPAFWTD21

Equipment Class: (5) Horizontal Pumps

Equipment Description: AUX FEED PUMP 21

Project: CCNPP 2 SWEL

Location (Bldg, Elev, Room/Area): TURB, 12.00 ft, CAL-AFWPR-605

Manufacturer/Model: _____

Instructions for Completing Checklist

This checklist may be used to document the results of the Seismic Walkdown of an item of equipment on the SWEL. The space below each of the following questions may be used to record the results of judgments and findings. Additional space is provided at the end of this checklist for documenting other comments.

Anchorage

1. Is anchorage configuration verification required (i.e., is the item one of the 50% of SWEL items requiring such verification)? Yes

2. Is the anchorage free of bent, broken, missing or loose hardware? Yes

3. Is the anchorage free of corrosion that is more than mild surface oxidation? Yes

4. Is the anchorage free of visible cracks in the concrete near the anchors? Yes

5. Is the anchorage configuration consistent with plant documentation? (Note: This question only applies if the item is one of the 50% for which an anchorage configuration verification is required.) Yes
Anchorage is consistent with drawings 61625, 61597 sheet 3 and 62207.

6. Based on the above anchorage evaluations, is the anchorage free of potentially adverse seismic conditions? Yes

ATTACHMENT 3
WALKDOWN CHECKLISTS

Status: Y N U

Seismic Walkdown Checklist (SWC)

Equipment ID No.: 2PUMPAFWTD21

Equipment Class: (5) Horizontal Pumps

Equipment Description: AUX FEED PUMP 21

Interaction Effects

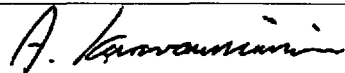
7. Are soft targets free from impact by nearby equipment or structures? Yes
8. Are overhead equipment, distribution systems, ceiling tiles and lighting, and masonry block walls not likely to collapse onto the equipment? Yes
If not 2/1 overhead light may strike sensitive valve.
10/3/12 - Overhead lights were deemed not a credible seismic concern due to their lightweight and to typical construction practices. Also, they have been previously evaluated by CCNPP and found seismically acceptable.
9. Do attached lines have adequate flexibility to avoid damage? Yes
Attachments are flex conduit and flexible tubing. Tubing spans pump suction line and gage support judged not a seismic concern.
10. Based on the above seismic interaction evaluations, is equipment free of potentially adverse seismic interaction effects? Yes
-

Other Adverse Conditions

11. Have you looked for and found no adverse seismic conditions that could adversely affect the safety functions of the equipment? Yes
-

Comments

Evaluated by:



A. Karavoussianis

Date: 11/09/2012



C. Figliolini

11/09/2012

Photos

ATTACHMENT 3
WALKDOWN CHECKLISTS

Status: Y N U

Seismic Walkdown Checklist (SWC)

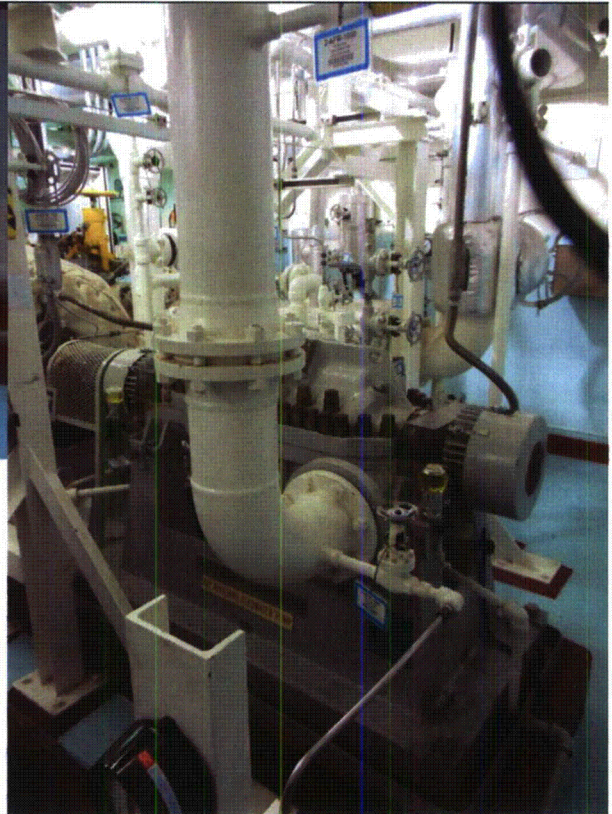
Equipment ID No.: 2PUMPAFWTD21

Equipment Class: (5) Horizontal Pumps

Equipment Description: AUX FEED PUMP 21



2PUMPAFWTD21 8-10-12 035



2PUMPAFWTD21 8-10-12 036

ATTACHMENT 3
WALKDOWN CHECKLISTS

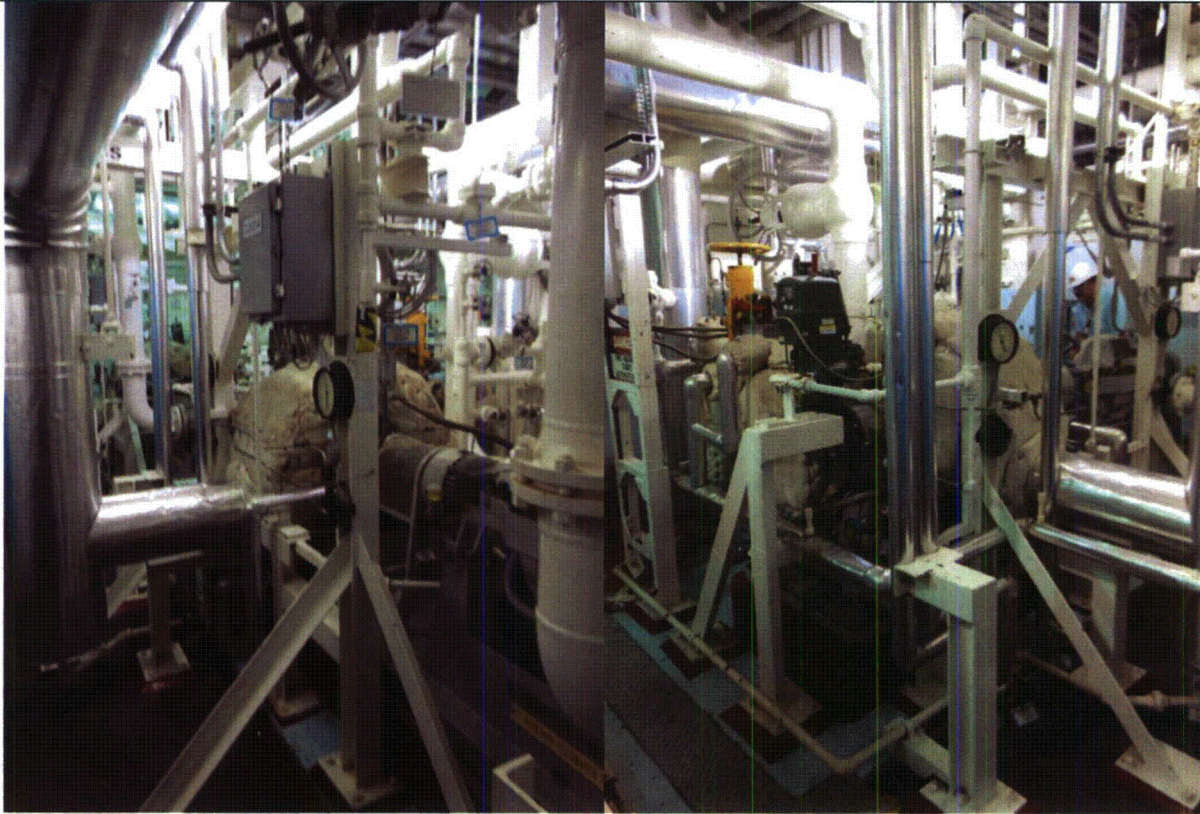
Status: Y N U

Seismic Walkdown Checklist (SWC)

Equipment ID No.: 2PUMPAFWTD21

Equipment Class: (5) Horizontal Pumps

Equipment Description: AUX FEED PUMP 21



2PUMPAFWTD21 8-10-12 037

2PUMPAFWTD21 8-10-12 038

ATTACHMENT 3
WALKDOWN CHECKLISTS

Status: Y N U

Seismic Walkdown Checklist (SWC)

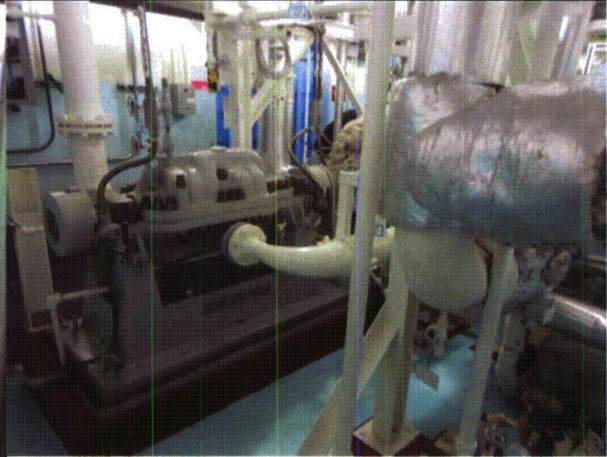
Equipment ID No.: 2PUMPAFWTD21

Equipment Class: (5) Horizontal Pumps

Equipment Description: AUX FEED PUMP 21



2PUMPAFWTD21 8-10-12 039



2PUMPAFWTD21 8-10-12 040

ATTACHMENT 3
WALKDOWN CHECKLISTS

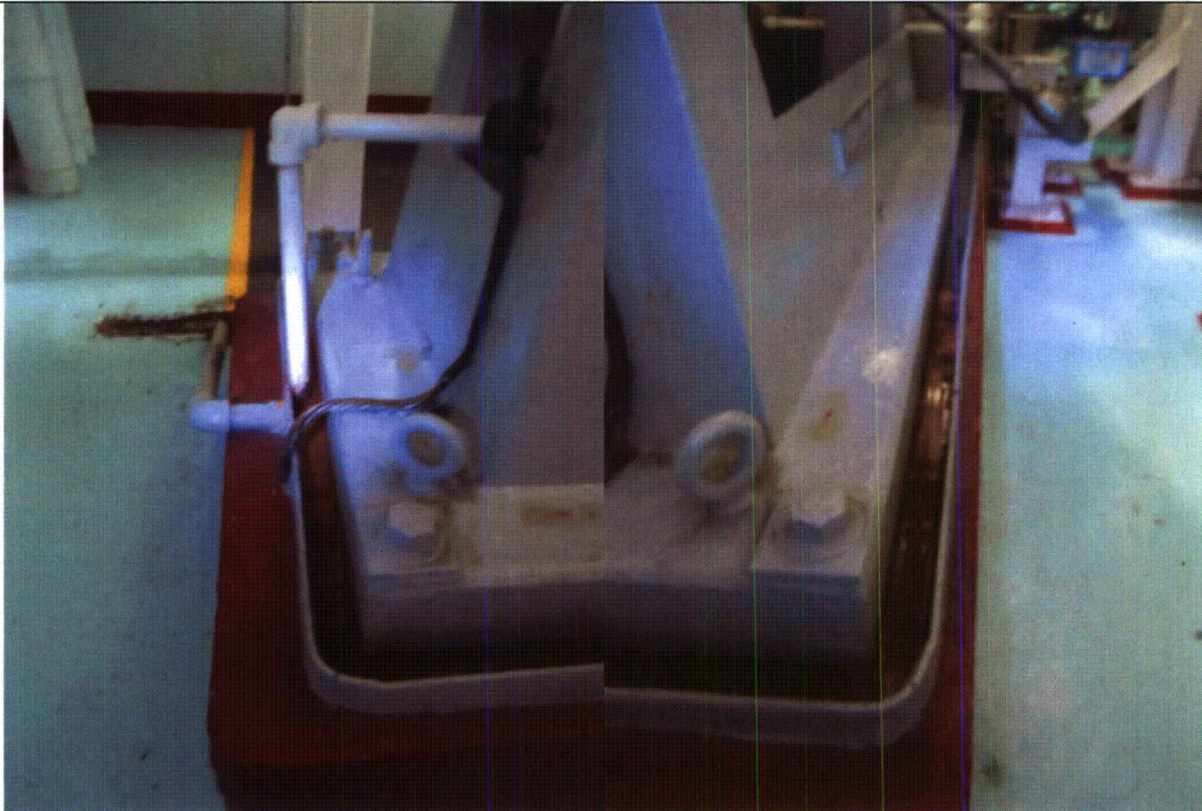
Status: Y N U

Seismic Walkdown Checklist (SWC)

Equipment ID No.: 2PUMPAFWTD21

Equipment Class: (5) Horizontal Pumps

Equipment Description: AUX FEED PUMP 21



2PUMPAFWTD21 8-10-12 041

2PUMPAFWTD21 8-10-12 042

ATTACHMENT 3
WALKDOWN CHECKLISTS

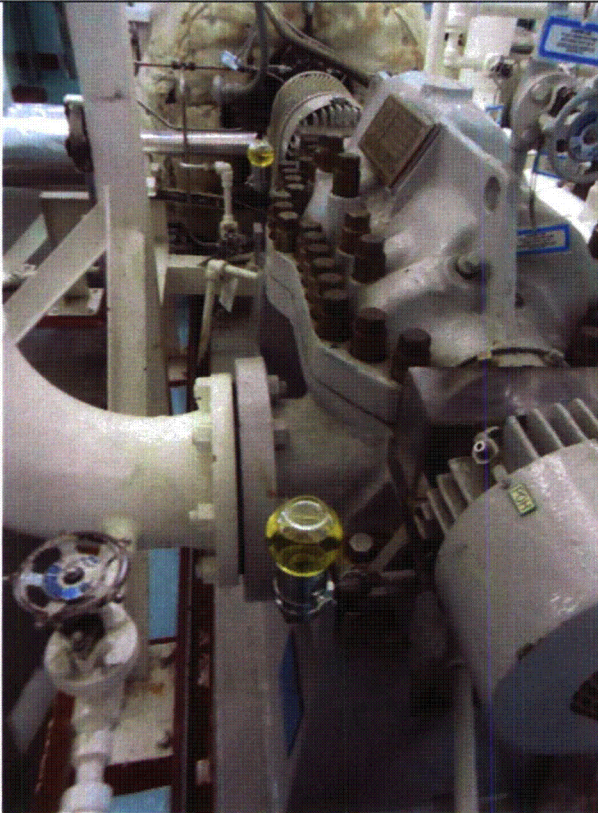
Status: Y N U

Seismic Walkdown Checklist (SWC)

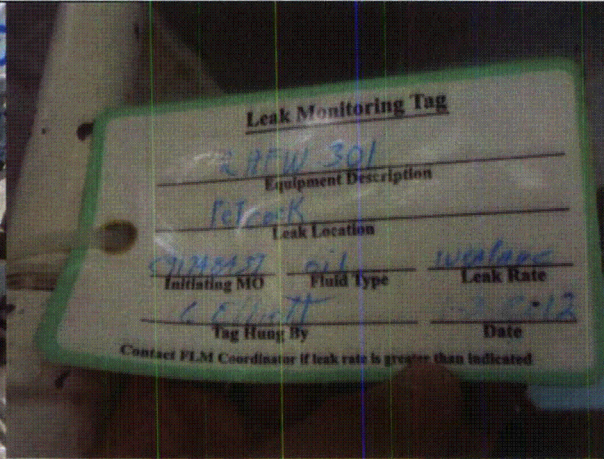
Equipment ID No.: 2PUMPAFWTD21

Equipment Class: (5) Horizontal Pumps

Equipment Description: AUX FEED PUMP 21



2PUMPAFWTD21 8-10-12 043



2PUMPAFWTD21 8-10-12 044

ATTACHMENT 3

WALKDOWN CHECKLISTS

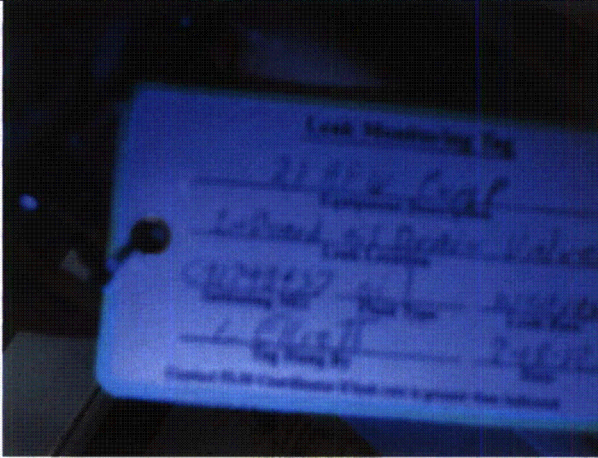
Status: Y N U

Seismic Walkdown Checklist (SWC)

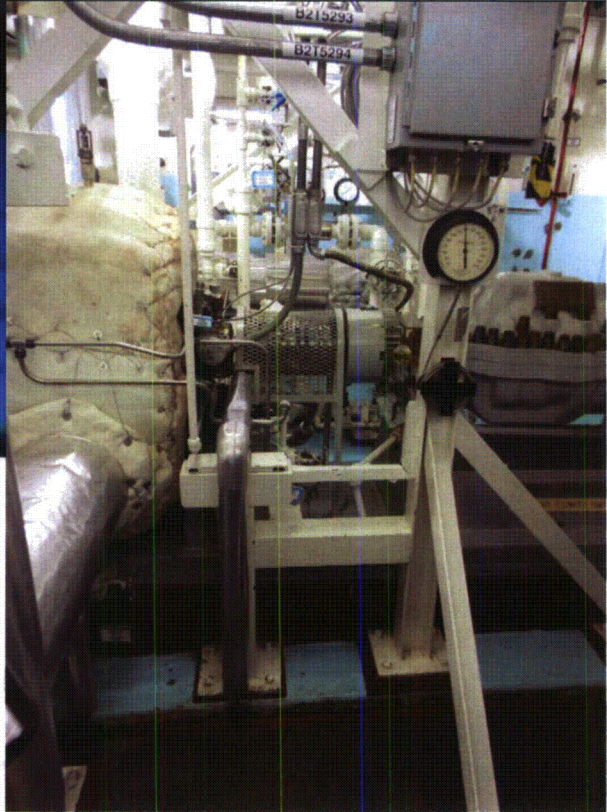
Equipment ID No.: 2PUMPAFWTD21

Equipment Class: (5) Horizontal Pumps

Equipment Description: AUX FEED PUMP 21



2PUMPAFWTD21 8-10-12 045



2PUMPAFWTD21 8-10-12 046

ATTACHMENT 3 WALKDOWN CHECKLISTS

Status: Y N U

Seismic Walkdown Checklist (SWC)

Equipment ID No.: 2PUMPAFWTD21

Equipment Class: (5) Horizontal Pumps

Equipment Description: AUX FEED PUMP 21



2PUMPAFWTD21 8-10-12 047

2PUMPAFWTD21 8-10-12 048

ATTACHMENT 3
WALKDOWN CHECKLISTS

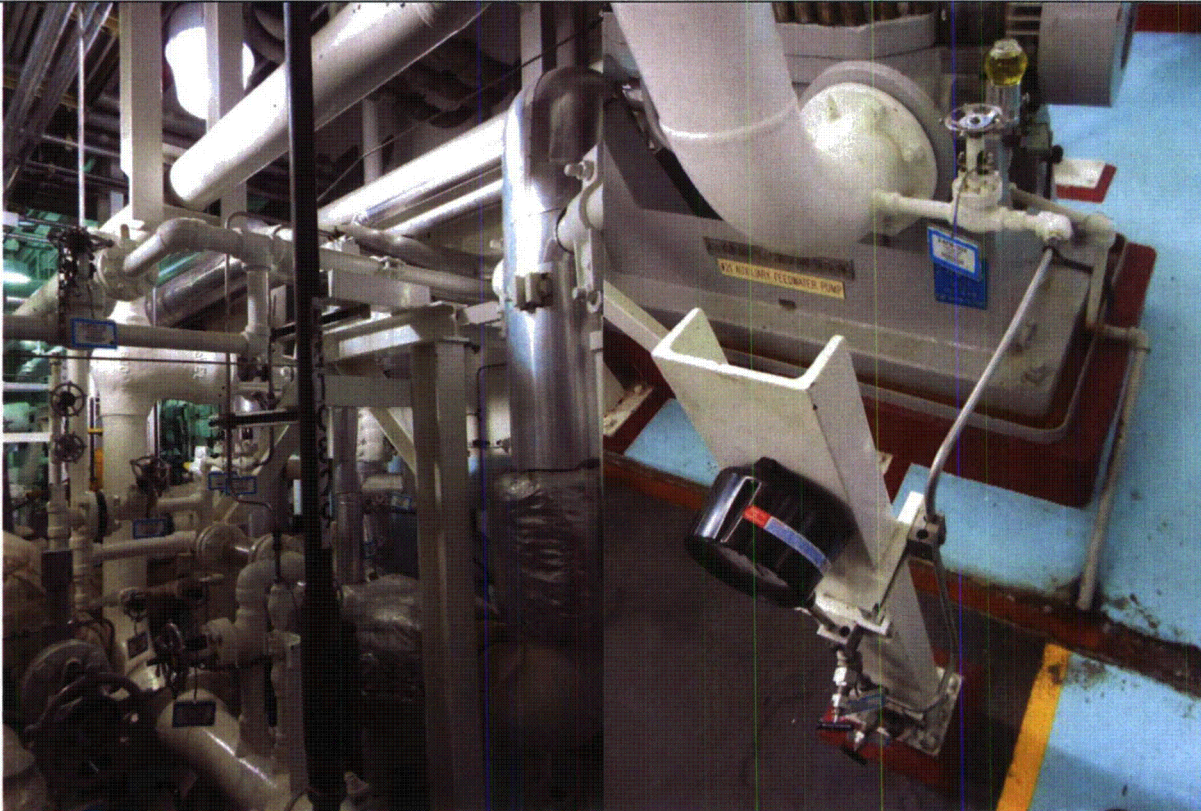
Status: Y N U

Seismic Walkdown Checklist (SWC)

Equipment ID No.: 2PUMPAFWTD21

Equipment Class: (5) Horizontal Pumps

Equipment Description: AUX FEED PUMP 21



2PUMPAFWTD21 8-10-12 049

2PUMPAFWTD21 8-10-12 050

ATTACHMENT 3
WALKDOWN CHECKLISTS

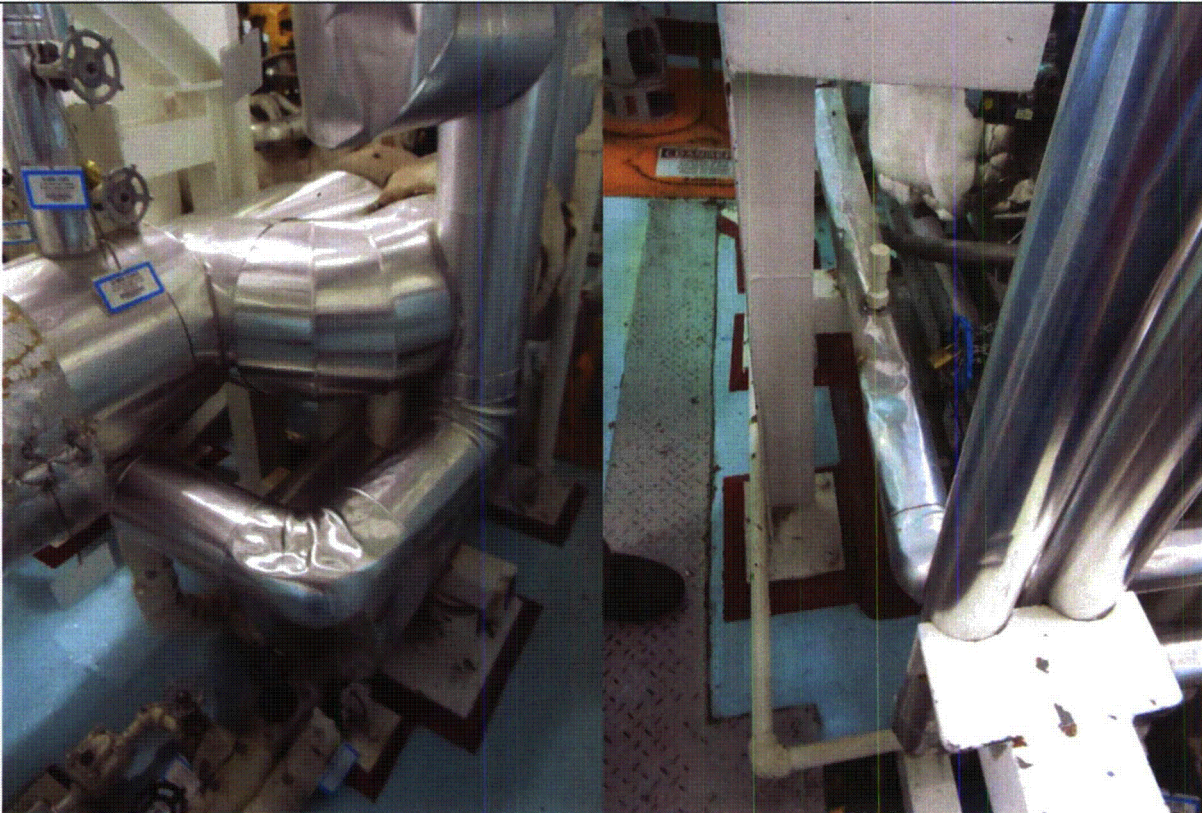
Status: Y N U

Seismic Walkdown Checklist (SWC)

Equipment ID No.: 2PUMPAFWTD21

Equipment Class: (5) Horizontal Pumps

Equipment Description: AUX FEED PUMP 21



2PUMPAFWTD21 8-10-12 051

2PUMPAFWTD21 8-10-12 052

ATTACHMENT 3

WALKDOWN CHECKLISTS

Status: Y N U

Seismic Walkdown Checklist (SWC)

Equipment ID No.: 2PUMPCC22

Equipment Class: (5) Horizontal Pumps

Equipment Description: 22 COMPONENT COOLING PUMP

Project: CCNPP 2 SWEL

Location (Bldg, Elev, Room/Area): AUX, 5.00 ft, CAL-AB-201

Manufacturer/Model: _____

Instructions for Completing Checklist

This checklist may be used to document the results of the Seismic Walkdown of an item of equipment on the SWEL. The space below each of the following questions may be used to record the results of judgments and findings. Additional space is provided at the end of this checklist for documenting other comments.

Anchorage

1. Is anchorage configuration verification required (i.e., is the item one of the 50% of SWEL items requiring such verification)? Yes

2. Is the anchorage free of bent, broken, missing or loose hardware? Yes

3. Is the anchorage free of corrosion that is more than mild surface oxidation? Yes

4. Is the anchorage free of visible cracks in the concrete near the anchors? Yes

5. Is the anchorage configuration consistent with plant documentation? (Note: This question only applies if the item is one of the 50% for which an anchorage configuration verification is required.) Yes
Anchorage is consistent with drawing FSK-C-0092.

6. Based on the above anchorage evaluations, is the anchorage free of potentially adverse seismic conditions? Yes

ATTACHMENT 3
WALKDOWN CHECKLISTS

Status: Y N U

Seismic Walkdown Checklist (SWC)

Equipment ID No.: 2PUMPCC22

Equipment Class: (5) Horizontal Pumps

Equipment Description: 22 COMPONENT COOLING PUMP

Interaction Effects

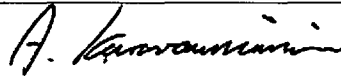
7. Are soft targets free from impact by nearby equipment or structures? Yes
Nearby block wall shielding adequately supported and braced, judged not a seismic concern.
8. Are overhead equipment, distribution systems, ceiling tiles and lighting, and masonry block walls not likely to collapse onto the equipment? Yes
9. Do attached lines have adequate flexibility to avoid damage? Yes
10. Based on the above seismic interaction evaluations, is equipment free of potentially adverse seismic interaction effects? Yes
-

Other Adverse Conditions

11. Have you looked for and found no adverse seismic conditions that could adversely affect the safety functions of the equipment? Yes
-

Comments

Evaluated by:



A. Karavoussianis

Date: 11/09/2012



C. Figliolini

11/09/2012

Photos

ATTACHMENT 3
WALKDOWN CHECKLISTS

Status: Y N U

Seismic Walkdown Checklist (SWC)

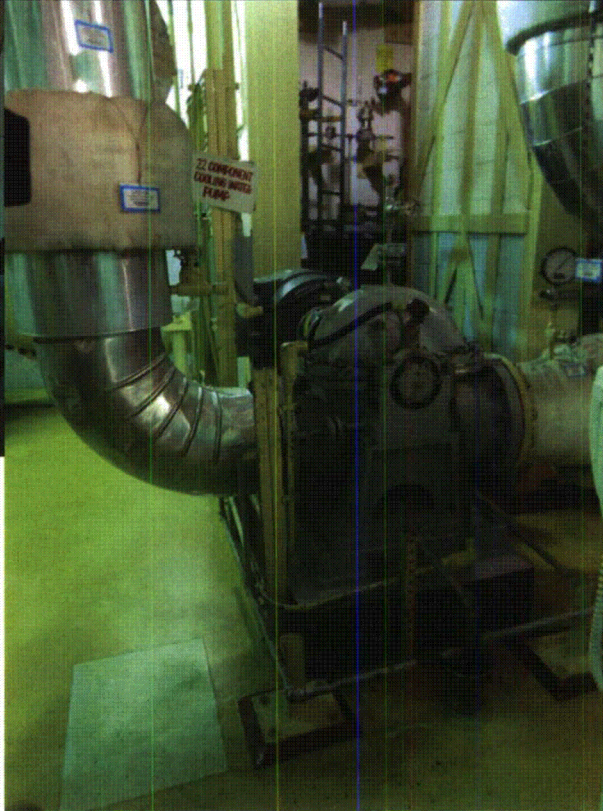
Equipment ID No.: 2PUMPCC22

Equipment Class: (5) Horizontal Pumps

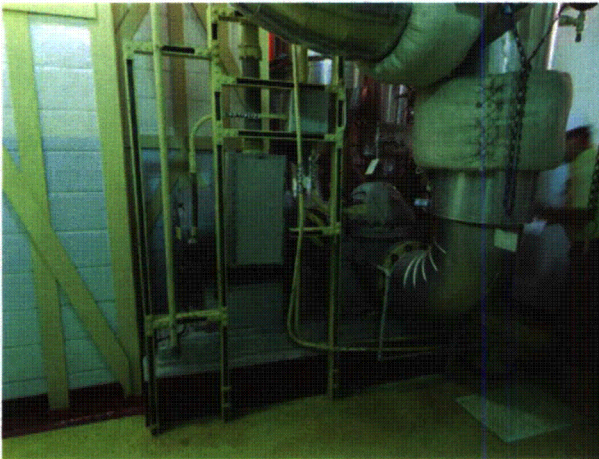
Equipment Description: 22 COMPONENT COOLING PUMP



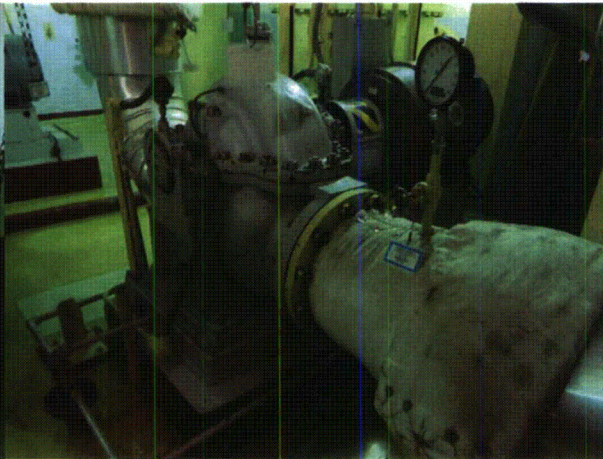
2PUMPCC22 8-7-12 096



2PUMPCC22 8-7-12 097



2PUMPCC22 8-7-12 098



2PUMPCC22 8-7-12 099

ATTACHMENT 3
WALKDOWN CHECKLISTS

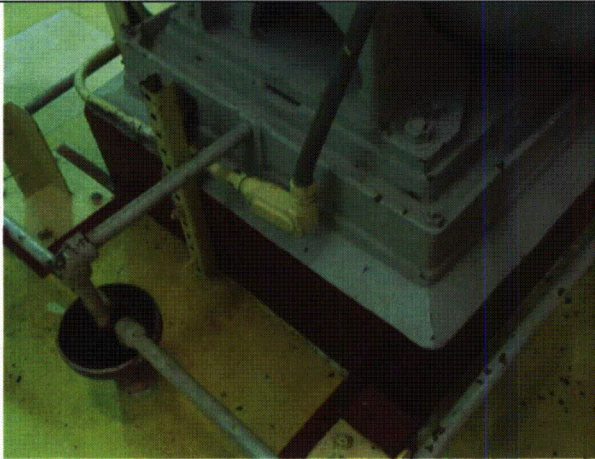
Status: Y N U

Seismic Walkdown Checklist (SWC)

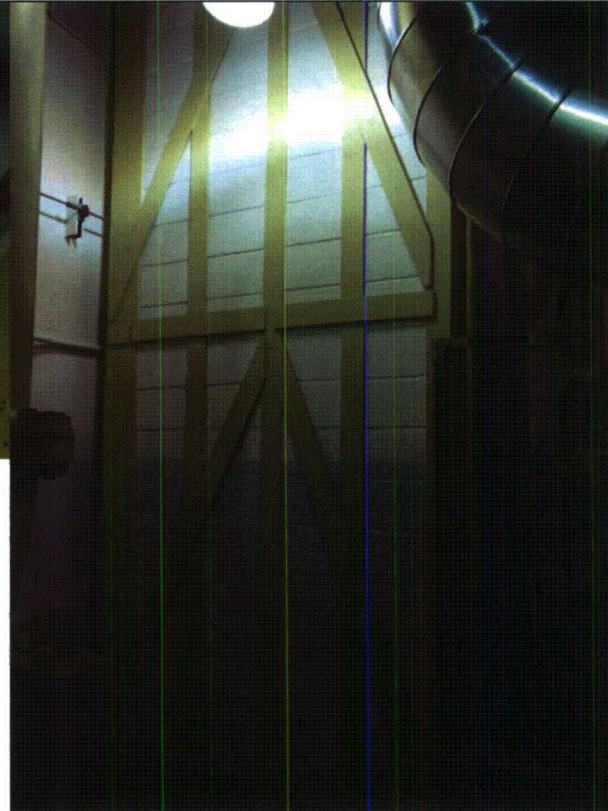
Equipment ID No.: 2PUMPCC22

Equipment Class: (5) Horizontal Pumps

Equipment Description: 22 COMPONENT COOLING PUMP



2PUMPCC22 8-7-12 100



2PUMPCC22 8-7-12 101

ATTACHMENT 3
WALKDOWN CHECKLISTS

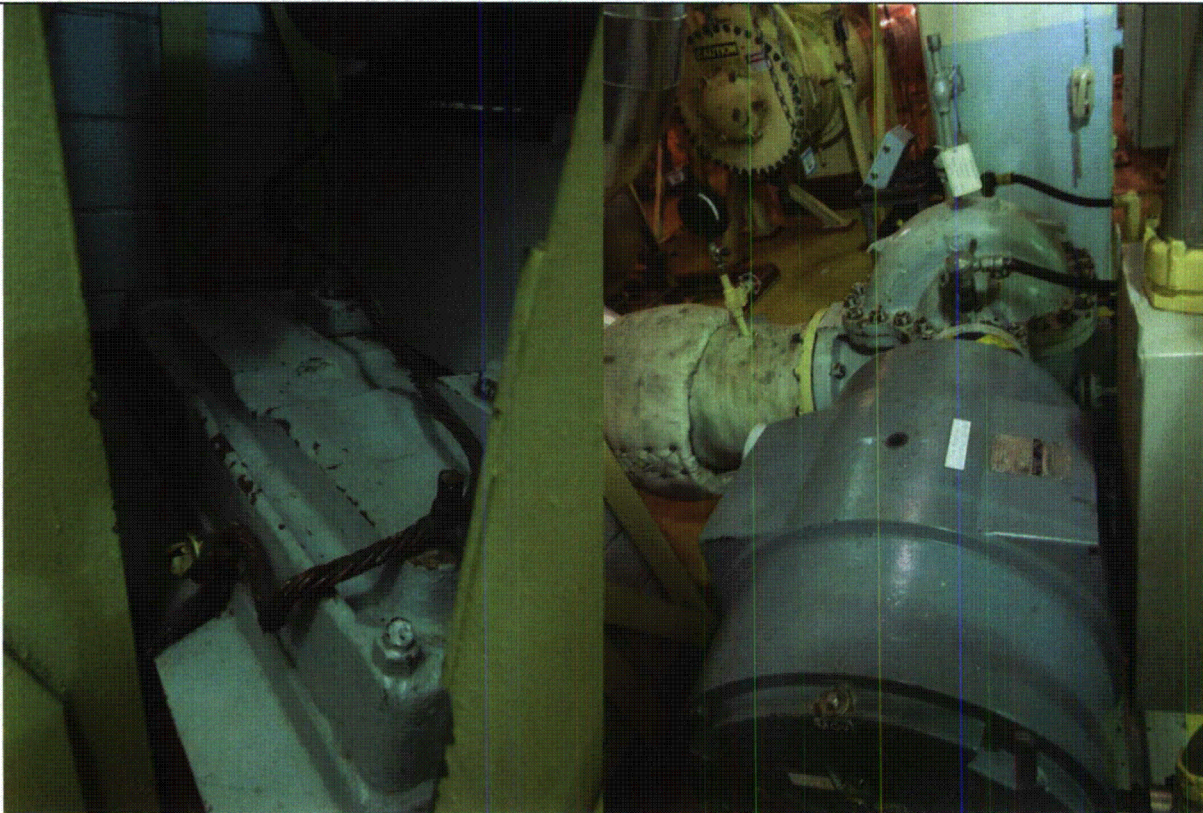
Status: Y N U

Seismic Walkdown Checklist (SWC)

Equipment ID No.: 2PUMPCC22

Equipment Class: (5) Horizontal Pumps

Equipment Description: 22 COMPONENT COOLING PUMP



2PUMPCC22 8-7-12 102

2PUMPCC22 8-7-12 103

ATTACHMENT 3
WALKDOWN CHECKLISTS

Status: Y N U

Seismic Walkdown Checklist (SWC)

Equipment ID No.: 2PUMPCC22

Equipment Class: (5) Horizontal Pumps

Equipment Description: 22 COMPONENT COOLING PUMP



2PUMPCC22 8-7-12 104

2PUMPCC22 8-7-12 105

ATTACHMENT 3
WALKDOWN CHECKLISTS

Status: Y N U

Seismic Walkdown Checklist (SWC)

Equipment ID No.: 2PUMPDFOXFR2A

Equipment Class: (5) Horizontal Pumps

Equipment Description: 2A DG FO XFER PUMP

Project: CCNPP 2 SWEL

Location (Bldg, Elev, Room/Area): AUX, 45.00 ft, CAL-AB-422

Manufacturer/Model: _____

Instructions for Completing Checklist

This checklist may be used to document the results of the Seismic Walkdown of an item of equipment on the SWEL. The space below each of the following questions may be used to record the results of judgments and findings. Additional space is provided at the end of this checklist for documenting other comments.

Anchorage

1. Is anchorage configuration verification required (i.e., is the item one of the 50% of SWEL items requiring such verification)? No

2. Is the anchorage free of bent, broken, missing or loose hardware? Yes

3. Is the anchorage free of corrosion that is more than mild surface oxidation? Yes

4. Is the anchorage free of visible cracks in the concrete near the anchors? Yes

5. Is the anchorage configuration consistent with plant documentation? (Note: This question only applies if the item is one of the 50% for which an anchorage configuration verification is required.) Not Applicable

6. Based on the above anchorage evaluations, is the anchorage free of potentially adverse seismic conditions? Yes

ATTACHMENT 3
WALKDOWN CHECKLISTS

Status: Y N U

Seismic Walkdown Checklist (SWC)

Equipment ID No.: 2PUMPDFOXFR2A

Equipment Class: (5) Horizontal Pumps

Equipment Description: 2A DG FO XFER PUMP


Interaction Effects


7. Are soft targets free from impact by nearby equipment or structures? Yes
8. Are overhead equipment, distribution systems, ceiling tiles and lighting, and masonry block walls not likely to collapse onto the equipment? Yes
9. Do attached lines have adequate flexibility to avoid damage? Yes
10. Based on the above seismic interaction evaluations, is equipment free of potentially adverse seismic interaction effects? Yes
-

Other Adverse Conditions

11. Have you looked for and found no adverse seismic conditions that could adversely affect the safety functions of the equipment? Yes
-

Comments

Evaluated by:  A. Karavoussianis Date: 11/09/2012

 11/09/2012

Photos

ATTACHMENT 3

WALKDOWN CHECKLISTS

Status: Y N U

Seismic Walkdown Checklist (SWC)

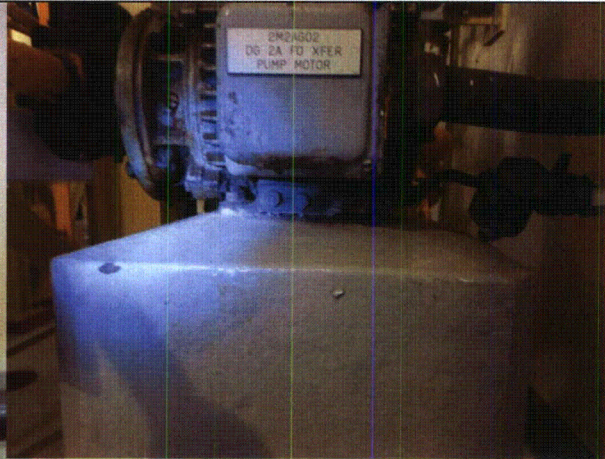
Equipment ID No.: 2PUMPDFOXFR2A

Equipment Class: (5) Horizontal Pumps

Equipment Description: 2A DG FO XFER PUMP



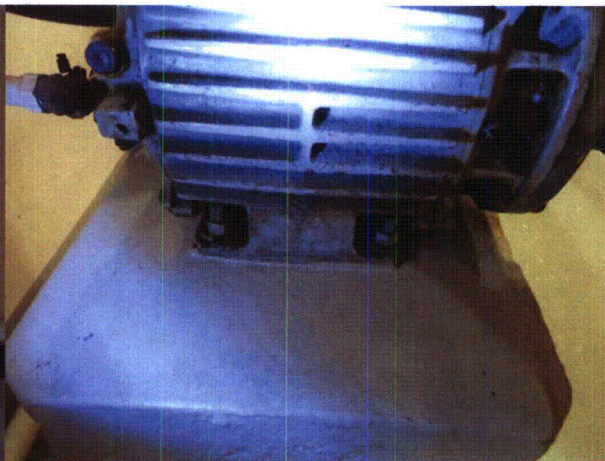
2PUMPDFOXFR2A 8-13-12 224



2PUMPDFOXFR2A 8-13-12 225



2PUMPDFOXFR2A 8-13-12 226



2PUMPDFOXFR2A 8-13-12 227

ATTACHMENT 3
WALKDOWN CHECKLISTS

Status: Y N U

Seismic Walkdown Checklist (SWC)

Equipment ID No.: 2PUMPHPSI21

Equipment Class: (5) Horizontal Pumps

Equipment Description: SI HPSI PUMP 21

Project: CCNPP 2 SWEL

Location (Bldg, Elev, Room/Area): AUX, -15.00 ft, CAL-AB-101

Manufacturer/Model: _____

Instructions for Completing Checklist

This checklist may be used to document the results of the Seismic Walkdown of an item of equipment on the SWEL. The space below each of the following questions may be used to record the results of judgments and findings. Additional space is provided at the end of this checklist for documenting other comments.

Anchorage

- | | |
|--|----------------|
| 1. Is anchorage configuration verification required (i.e., is the item one of the 50% of SWEL items requiring such verification)? | No |
| 2. Is the anchorage free of bent, broken, missing or loose hardware? | Yes |
| 3. Is the anchorage free of corrosion that is more than mild surface oxidation? | Yes |
| 4. Is the anchorage free of visible cracks in the concrete near the anchors? | Yes |
| 5. Is the anchorage configuration consistent with plant documentation? (Note: This question only applies if the item is one of the 50% for which an anchorage configuration verification is required.) | Not Applicable |
| 6. Based on the above anchorage evaluations, is the anchorage free of potentially adverse seismic conditions? | Yes |

ATTACHMENT 3
WALKDOWN CHECKLISTS

Status: Y N U

Seismic Walkdown Checklist (SWC)

Equipment ID No.: 2PUMPHPSI21

Equipment Class: (5) Horizontal Pumps

Equipment Description: SI HPSI PUMP 21

Interaction Effects

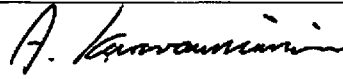
7. Are soft targets free from impact by nearby equipment or structures? Yes
8. Are overhead equipment, distribution systems, ceiling tiles and lighting, and masonry block walls not likely to collapse onto the equipment? Yes
9. Do attached lines have adequate flexibility to avoid damage? Yes
10. Based on the above seismic interaction evaluations, is equipment free of potentially adverse seismic interaction effects? Yes
-

Other Adverse Conditions

11. Have you looked for and found no adverse seismic conditions that could adversely affect the safety functions of the equipment? Yes
Observed that the pump's sight glass cage is missing, not a seismic interaction concern.
-

Comments

Evaluated by:



A. Karavoussianis

Date: 11/09/2012



C. Figliolini

11/09/2012

Photos

ATTACHMENT 3
WALKDOWN CHECKLISTS

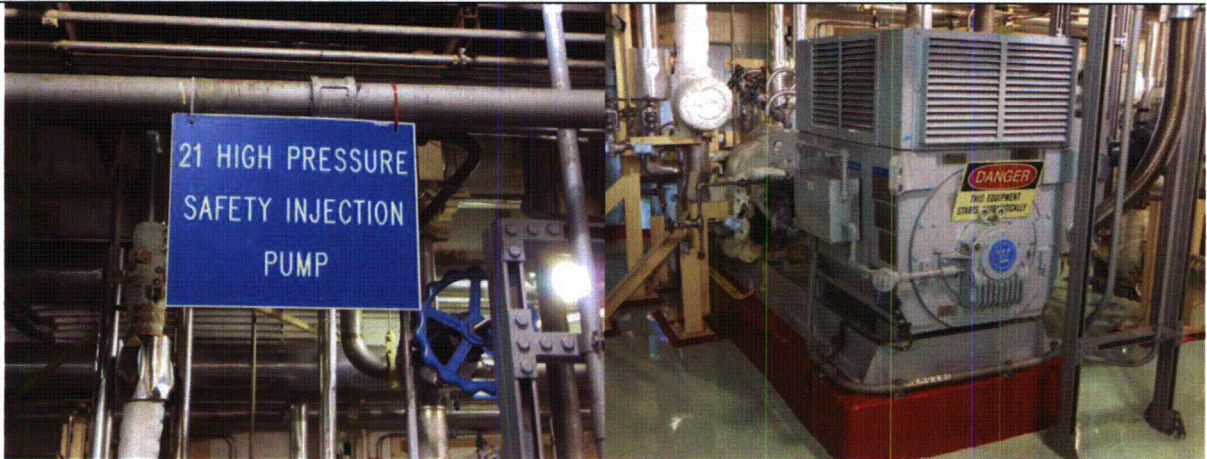
Status: Y N U

Seismic Walkdown Checklist (SWC)

Equipment ID No.: 2PUMPHPSI21

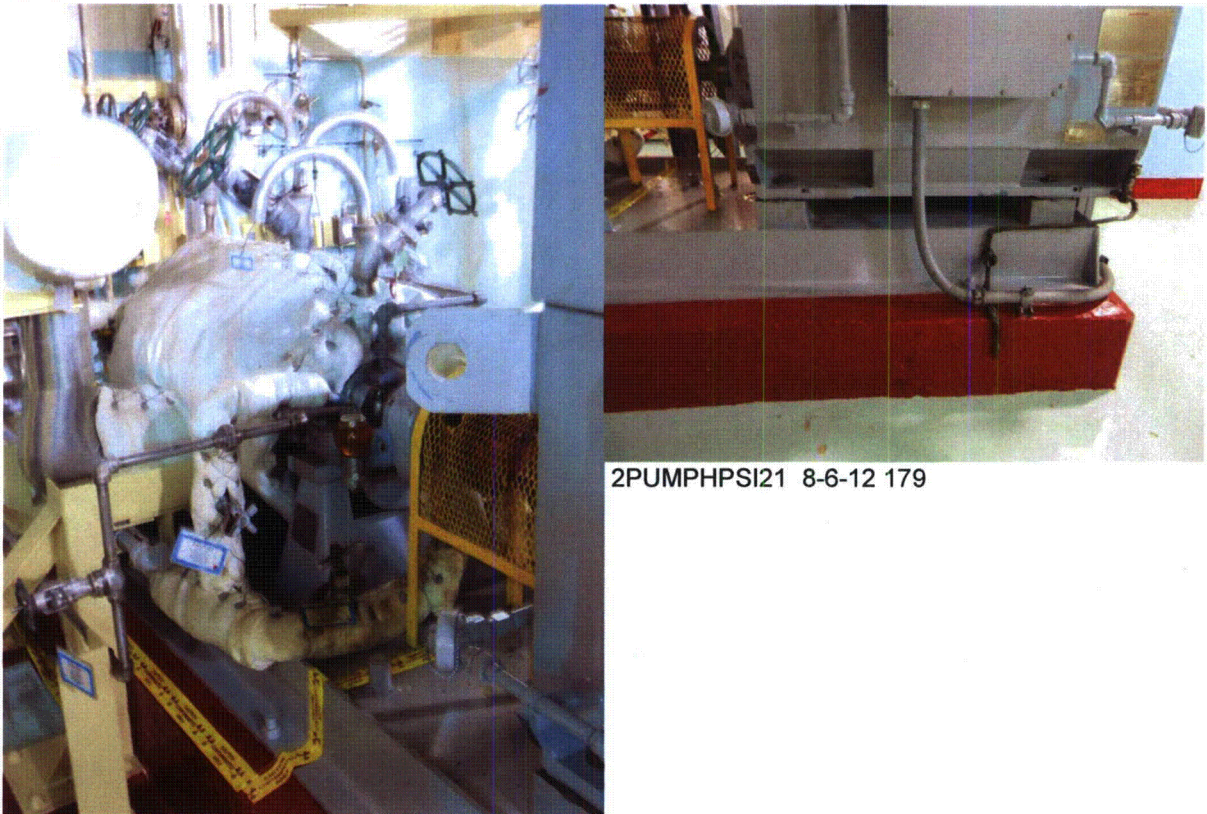
Equipment Class: (5) Horizontal Pumps

Equipment Description: SI HPSI PUMP 21



2PUMPHPSI21 8-6-12 176

2PUMPHPSI21 8-6-12 177



2PUMPHPSI21 8-6-12 179

2PUMPHPSI21 8-6-12 178

ATTACHMENT 3
WALKDOWN CHECKLISTS

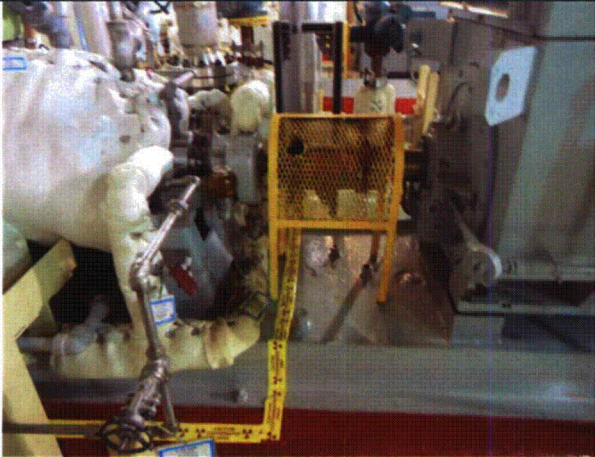
Status: Y N U

Seismic Walkdown Checklist (SWC)

Equipment ID No.: 2PUMPHPSI21

Equipment Class: (5) Horizontal Pumps

Equipment Description: SI HPSI PUMP 21



2PUMPHPSI21 8-6-12 180



2PUMPHPSI21 8-6-12 181

ATTACHMENT 3
WALKDOWN CHECKLISTS

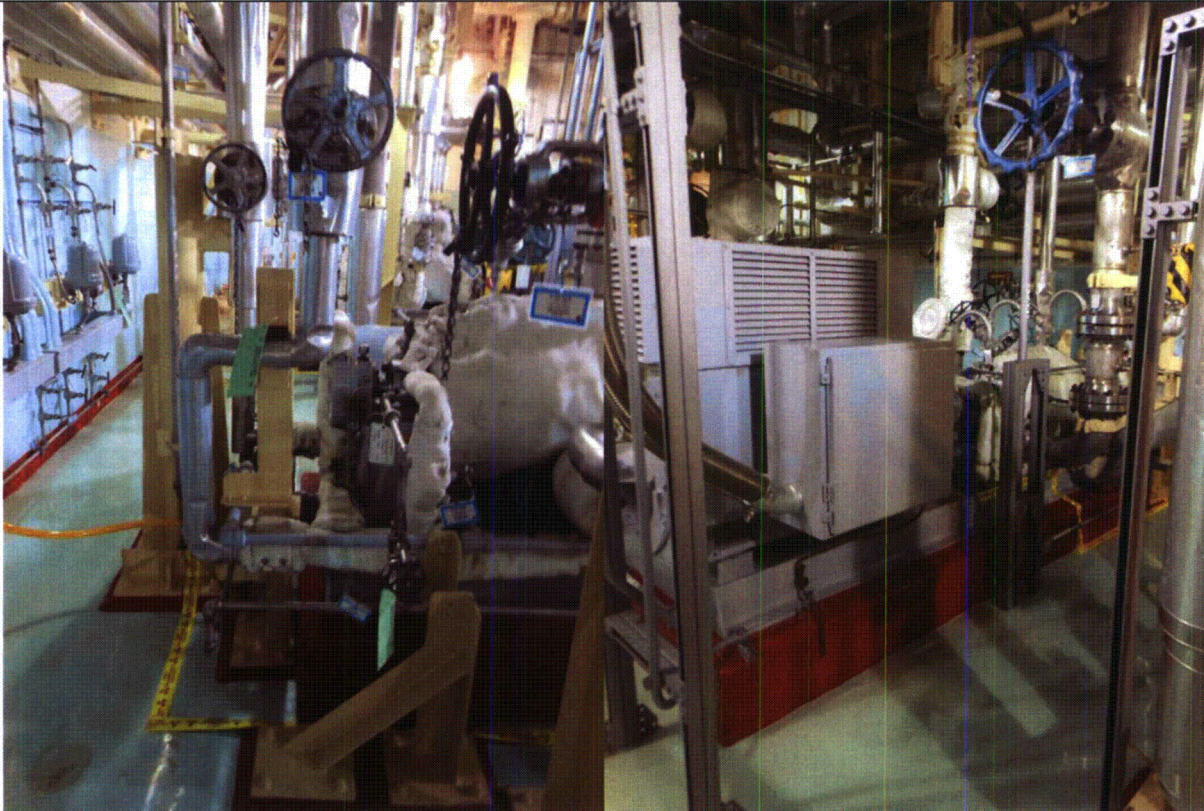
Status: Y N U

Seismic Walkdown Checklist (SWC)

Equipment ID No.: 2PUMPHPSI21

Equipment Class: (5) Horizontal Pumps

Equipment Description: SI HPSI PUMP 21



2PUMPHPSI21 8-6-12 182

2PUMPHPSI21 8-6-12 183

ATTACHMENT 3

WALKDOWN CHECKLISTS

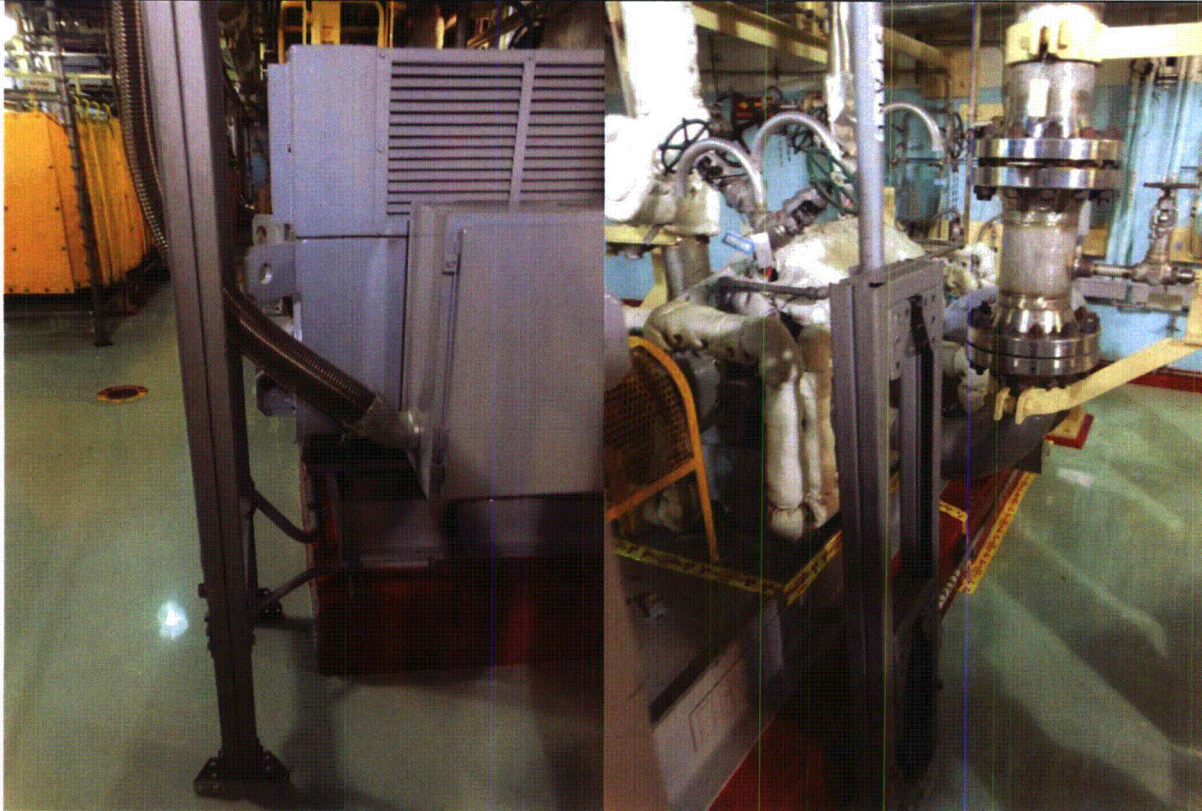
Status: Y N U

Seismic Walkdown Checklist (SWC)

Equipment ID No.: 2PUMPHPSI21

Equipment Class: (5) Horizontal Pumps

Equipment Description: SI HPSI PUMP 21



2PUMPHPSI21 8-6-12 184

2PUMPHPSI21 8-6-12 185

ATTACHMENT 3
WALKDOWN CHECKLISTS

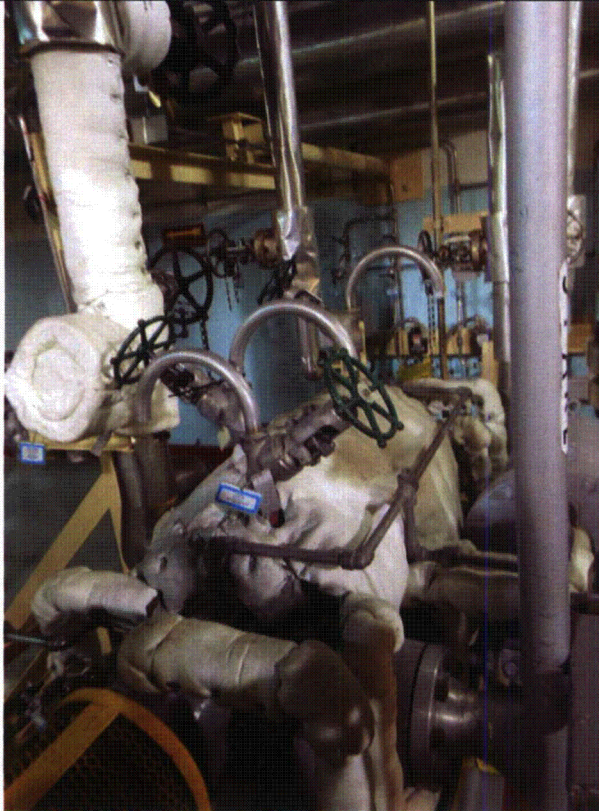
Status: Y N U

Seismic Walkdown Checklist (SWC)

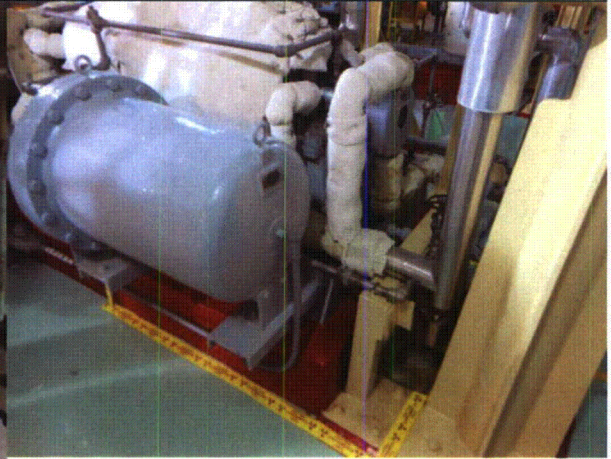
Equipment ID No.: 2PUMPHPSI21

Equipment Class: (5) Horizontal Pumps

Equipment Description: SI HPSI PUMP 21



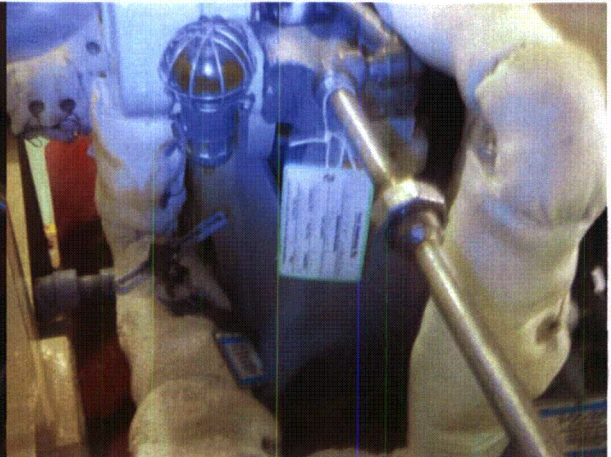
2PUMPHPSI21 8-6-12 186



2PUMPHPSI21 8-6-12 187



2PUMPHPSI21 8-6-12 188



2PUMPHPSI21 8-6-12 189

ATTACHMENT 3
WALKDOWN CHECKLISTS

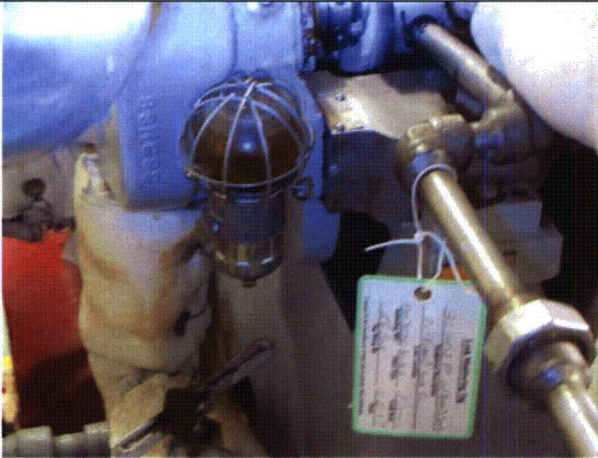
Status: Y N U

Seismic Walkdown Checklist (SWC)

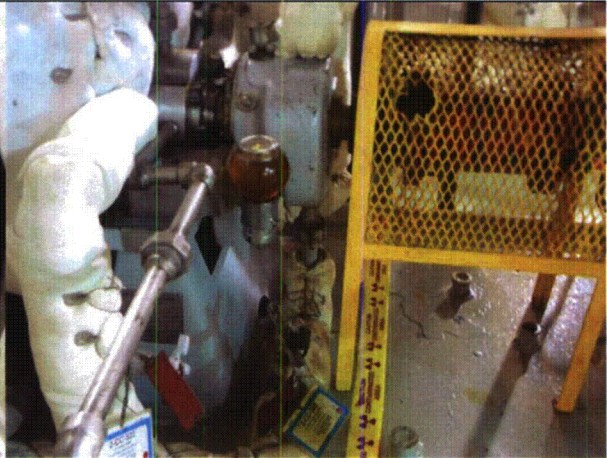
Equipment ID No.: 2PUMPHPSI21

Equipment Class: (5) Horizontal Pumps

Equipment Description: SI HPSI PUMP 21



2PUMPHPSI21 8-6-12 190



2PUMPHPSI21 8-6-12 191

ATTACHMENT 3
WALKDOWN CHECKLISTS

Status: Y N U

Seismic Walkdown Checklist (SWC)

Equipment ID No.: 2PUMPHPSI22

Equipment Class: (5) Horizontal Pumps

Equipment Description: SI HPSI PUMP 22

Project: CCNPP 2 SWEL

Location (Bldg, Elev, Room/Area): AUX, -15.00 ft, CAL-AB-102

Manufacturer/Model: _____

Instructions for Completing Checklist

This checklist may be used to document the results of the Seismic Walkdown of an item of equipment on the SWEL. The space below each of the following questions may be used to record the results of judgments and findings. Additional space is provided at the end of this checklist for documenting other comments.

Anchorage

1. Is anchorage configuration verification required (i.e., is the item one of the 50% of SWEL items requiring such verification)? Yes

 2. Is the anchorage free of bent, broken, missing or loose hardware? Yes

 3. Is the anchorage free of corrosion that is more than mild surface oxidation? Yes

 4. Is the anchorage free of visible cracks in the concrete near the anchors? Yes

 5. Is the anchorage configuration consistent with plant documentation? (Note: This question only applies if the item is one of the 50% for which an anchorage configuration verification is required.) Yes
Walkdown anchorage as-built is consistent with drawings CA02066.

 6. Based on the above anchorage evaluations, is the anchorage free of potentially adverse seismic conditions? Yes
-

ATTACHMENT 3
WALKDOWN CHECKLISTS

Status: Y N U

Seismic Walkdown Checklist (SWC)

Equipment ID No.: 2PUMPHPSI22

Equipment Class: (5) Horizontal Pumps

Equipment Description: SI HPSI PUMP 22

Interaction Effects

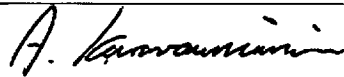
7. Are soft targets free from impact by nearby equipment or structures? Yes
8. Are overhead equipment, distribution systems, ceiling tiles and lighting, and masonry block walls not likely to collapse onto the equipment? Yes
9. Do attached lines have adequate flexibility to avoid damage? Yes
Noted small bore piping, judged flexible and not a seismic concern.
10. Based on the above seismic interaction evaluations, is equipment free of potentially adverse seismic interaction effects? Yes
-

Other Adverse Conditions

11. Have you looked for and found no adverse seismic conditions that could adversely affect the safety functions of the equipment? Yes
-

Comments

Evaluated by:



A. Karavoussianis

Date: 11/09/2012



C. Figliolini

11/09/2012

Photos

ATTACHMENT 3
WALKDOWN CHECKLISTS

Status: Y N U

Seismic Walkdown Checklist (SWC)

Equipment ID No.: 2PUMPHPSI22

Equipment Class: (5) Horizontal Pumps

Equipment Description: SI HPSI PUMP 22

ATTACHMENT 3
WALKDOWN CHECKLISTS

Status: Y N U

Seismic Walkdown Checklist (SWC)

Equipment ID No.: 2PUMPSICS21

Equipment Class: (5) Horizontal Pumps

Equipment Description: 21 CONTAINMENT SPRAY PUMP

Project: CCNPP 2 SWEL

Location (Bldg, Elev, Room/Area): AUX, -15.00 ft, CAL-AB-101

Manufacturer/Model: _____

Instructions for Completing Checklist

This checklist may be used to document the results of the Seismic Walkdown of an item of equipment on the SWEL. The space below each of the following questions may be used to record the results of judgments and findings. Additional space is provided at the end of this checklist for documenting other comments.

Anchorage

1. Is anchorage configuration verification required (i.e., is the item one of the 50% of SWEL items requiring such verification)? Yes

2. Is the anchorage free of bent, broken, missing or loose hardware? Yes

3. Is the anchorage free of corrosion that is more than mild surface oxidation? Yes

4. Is the anchorage free of visible cracks in the concrete near the anchors? Yes

5. Is the anchorage configuration consistent with plant documentation? (Note: This question only applies if the item is one of the 50% for which an anchorage configuration verification is required.) Yes
Anchorage is consistent with drawing FSK-C-0078.

6. Based on the above anchorage evaluations, is the anchorage free of potentially adverse seismic conditions? Yes

ATTACHMENT 3
WALKDOWN CHECKLISTS

Status: Y N U

Seismic Walkdown Checklist (SWC)

Equipment ID No.: 2PUMPSICS21

Equipment Class: (5) Horizontal Pumps

Equipment Description: 21 CONTAINMENT SPRAY PUMP

Interaction Effects

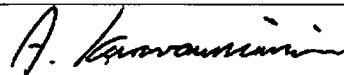
7. Are soft targets free from impact by nearby equipment or structures? Yes
8. Are overhead equipment, distribution systems, ceiling tiles and lighting, and masonry block walls not likely to collapse onto the equipment? Yes
9. Do attached lines have adequate flexibility to avoid damage? Yes
10. Based on the above seismic interaction evaluations, is equipment free of potentially adverse seismic interaction effects? No
*There is a basket of rags supported off a manual valve above the pump motor, judged not to be a seismic concern.
A 2-1/4" conduit and JB are supported on pinned frames, see sketch. CR-2012-009304*
-

Other Adverse Conditions

11. Have you looked for and found no adverse seismic conditions that could adversely affect the safety functions of the equipment? Yes
-

Comments

Evaluated by:



A. Karavoussianis

Date: 11/09/2012



C. Figliolini

11/09/2012

Photos

ATTACHMENT 3

WALKDOWN CHECKLISTS

Status: Y N U

Seismic Walkdown Checklist (SWC)

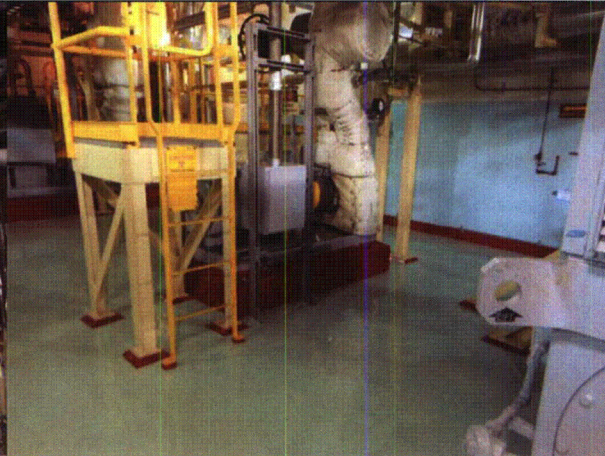
Equipment ID No.: 2PUMPSICS21

Equipment Class: (5) Horizontal Pumps

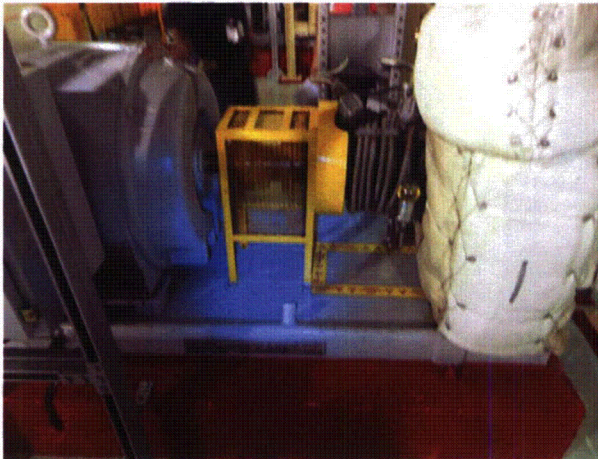
Equipment Description: 21 CONTAINMENT SPRAY PUMP



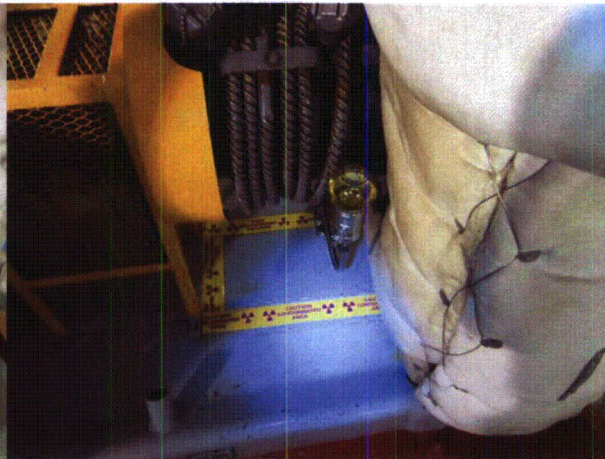
2PUMPSICS21 8-6-12 155



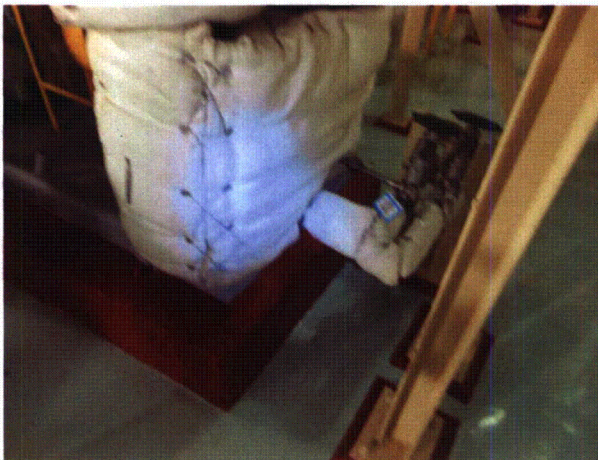
2PUMPSICS21 8-6-12 156



2PUMPSICS21 8-6-12 157



2PUMPSICS21 8-6-12 158



ATTACHMENT 3

WALKDOWN CHECKLISTS

Status: Y N U

Seismic Walkdown Checklist (SWC)

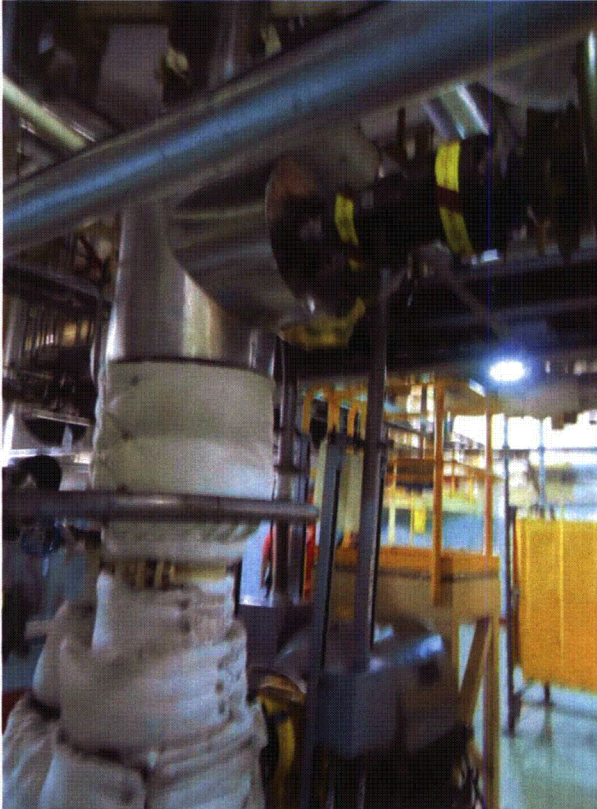
Equipment ID No.: 2PUMPSICS21

Equipment Class: (5) Horizontal Pumps

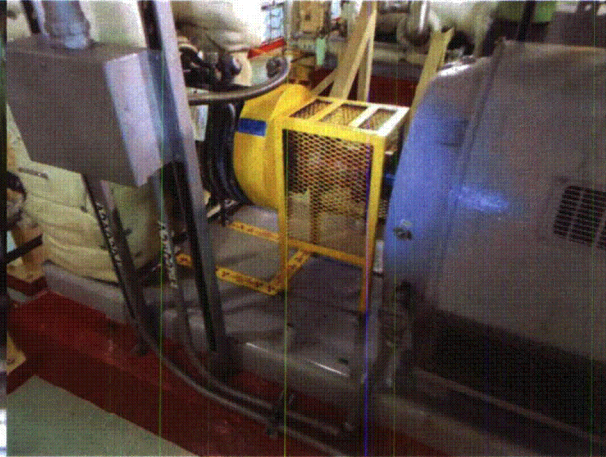
Equipment Description: 21 CONTAINMENT SPRAY PUMP

2PUMPSICS21 8-6-12 159

2PUMPSICS21 8-6-12 160



2PUMPSICS21 8-6-12 161



2PUMPSICS21 8-6-12 162

ATTACHMENT 3
WALKDOWN CHECKLISTS

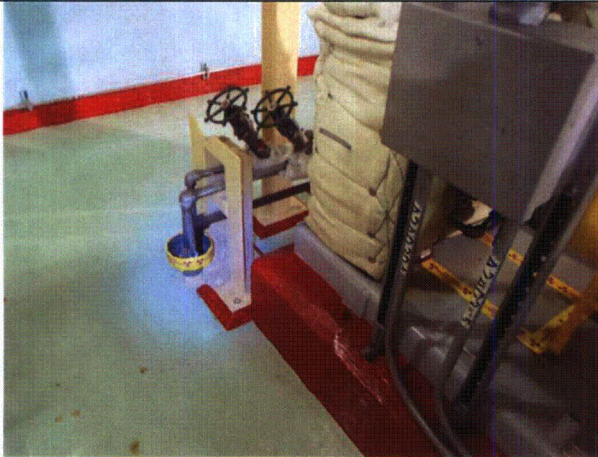
Status: Y N U

Seismic Walkdown Checklist (SWC)

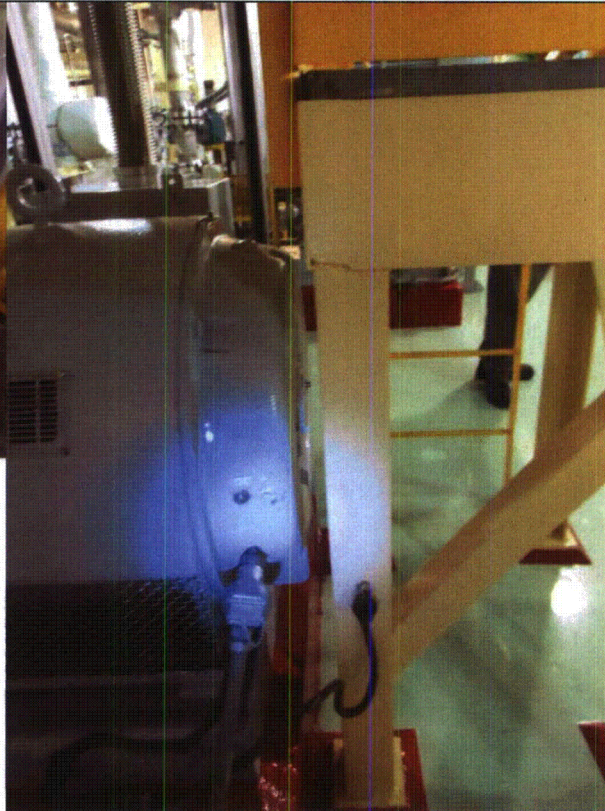
Equipment ID No.: 2PUMPSICS21

Equipment Class: (5) Horizontal Pumps

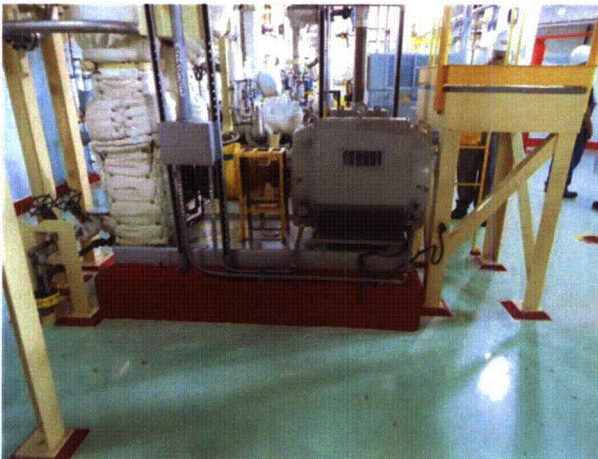
Equipment Description: 21 CONTAINMENT SPRAY PUMP



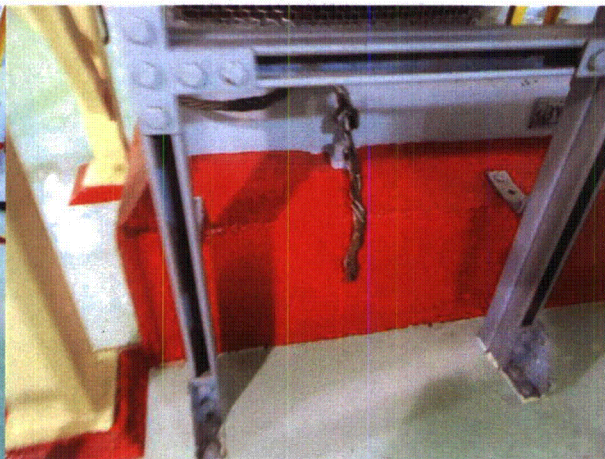
2PUMPSICS21 8-6-12 163



2PUMPSICS21 8-6-12 164



2PUMPSICS21 8-6-12 165



2PUMPSICS21 8-6-12 166

ATTACHMENT 3
WALKDOWN CHECKLISTS

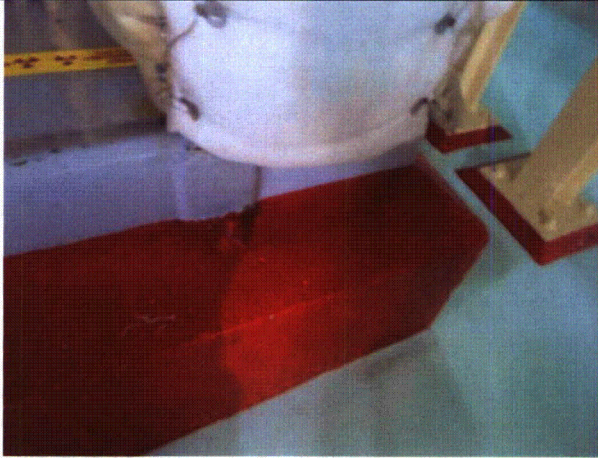
Status: Y N U

Seismic Walkdown Checklist (SWC)

Equipment ID No.: 2PUMPSICS21

Equipment Class: (5) Horizontal Pumps

Equipment Description: 21 CONTAINMENT SPRAY PUMP



2PUMPSICS21 8-6-12 167



2PUMPSICS21 8-6-12 168

ATTACHMENT 3
WALKDOWN CHECKLISTS

Status: Y N U

Seismic Walkdown Checklist (SWC)

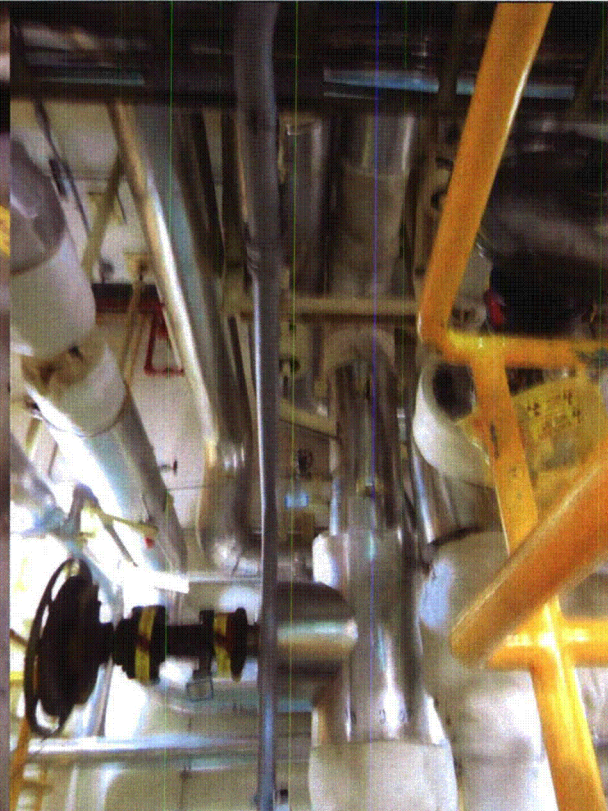
Equipment ID No.: 2PUMPSICS21

Equipment Class: (5) Horizontal Pumps

Equipment Description: 21 CONTAINMENT SPRAY PUMP



2PUMPSICS21 8-6-12 170



2PUMPSICS21 8-6-12 171

ATTACHMENT 3
WALKDOWN CHECKLISTS

Status: Y N U

Seismic Walkdown Checklist (SWC)

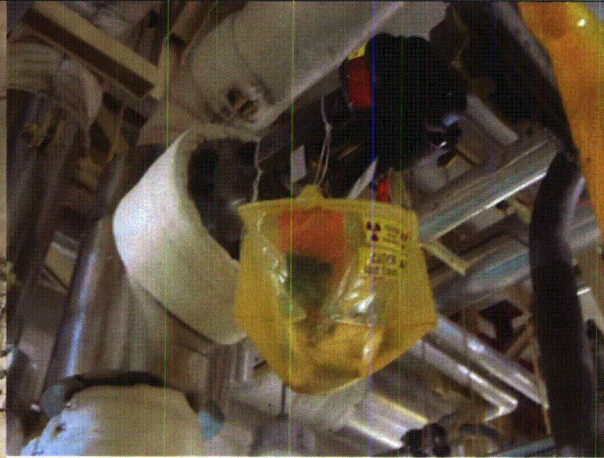
Equipment ID No.: 2PUMPSICS21

Equipment Class: (5) Horizontal Pumps

Equipment Description: 21 CONTAINMENT SPRAY PUMP



2PUMPSICS21 8-6-12 172



2PUMPSICS21 8-6-12 173

ATTACHMENT 3

WALKDOWN CHECKLISTS

Status: Y N U

Seismic Walkdown Checklist (SWC)

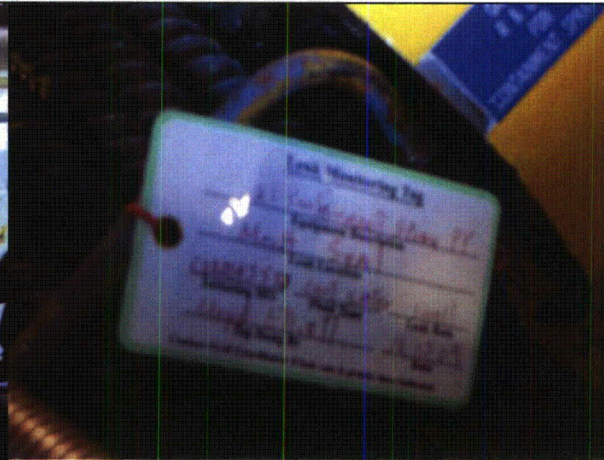
Equipment ID No.: 2PUMPSICS21

Equipment Class: (5) Horizontal Pumps

Equipment Description: 21 CONTAINMENT SPRAY PUMP



2PUMPSICS21 8-6-12 174



2PUMPSICS21 8-6-12 175

ATTACHMENT 3
WALKDOWN CHECKLISTS

Status: Y N U

Seismic Walkdown Checklist (SWC)

Equipment ID No.: 2PUMPSICS22

Equipment Class: (5) Horizontal Pumps

Equipment Description: 22 CONTAINMENT SPRAY PUMP

Project: CCNPP 2 SWEL

Location (Bldg, Elev, Room/Area): AUX, -15.00 ft, CAL-AB-102

Manufacturer/Model: _____

Instructions for Completing Checklist

This checklist may be used to document the results of the Seismic Walkdown of an item of equipment on the SWEL. The space below each of the following questions may be used to record the results of judgments and findings. Additional space is provided at the end of this checklist for documenting other comments.

Anchorage

1. Is anchorage configuration verification required (i.e., is the item one of the 50% of SWEL items requiring such verification)? Yes

2. Is the anchorage free of bent, broken, missing or loose hardware? Yes

3. Is the anchorage free of corrosion that is more than mild surface oxidation? Yes

4. Is the anchorage free of visible cracks in the concrete near the anchors? Yes

5. Is the anchorage configuration consistent with plant documentation? (Note: This question only applies if the item is one of the 50% for which an anchorage configuration verification is required.) Yes
Walkdown anchorage as-built is consistent with drawing FSK-C-0078.

6. Based on the above anchorage evaluations, is the anchorage free of potentially adverse seismic conditions? Yes

**ATTACHMENT 3
WALKDOWN CHECKLISTS**

Status: Y N U

Seismic Walkdown Checklist (SWC)

Equipment ID No.: 2PUMPSICS22

Equipment Class: (5) Horizontal Pumps

Equipment Description: 22 CONTAINMENT SPRAY PUMP

Interaction Effects

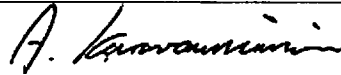
7. Are soft targets free from impact by nearby equipment or structures? Yes
8. Are overhead equipment, distribution systems, ceiling tiles and lighting, and masonry block walls not likely to collapse onto the equipment? Yes
9. Do attached lines have adequate flexibility to avoid damage? Yes
Drain piping is judged adequately supported and flexible.
10. Based on the above seismic interaction evaluations, is equipment free of potentially adverse seismic interaction effects? Yes
-

Other Adverse Conditions

11. Have you looked for and found no adverse seismic conditions that could adversely affect the safety functions of the equipment? Yes
-

Comments

Evaluated by:



A. Karavoussianis

Date: 11/09/2012



C. Figliolini

11/09/2012

Photos

ATTACHMENT 3

WALKDOWN CHECKLISTS

Status: Y N U

Seismic Walkdown Checklist (SWC)

Equipment ID No.: 2PUMPSICS22

Equipment Class: (5) Horizontal Pumps

Equipment Description: 22 CONTAINMENT SPRAY PUMP



2PUMPSICS22 8-7-12 287



2PUMPSICS22 8-7-12 288



2PUMPSICS22 8-7-12 289

ATTACHMENT 3
WALKDOWN CHECKLISTS

Status: Y N U

Seismic Walkdown Checklist (SWC)

Equipment ID No.: 2PUMPSILPSI22

Equipment Class: (5) Horizontal Pumps

Equipment Description: SI LPSI PUMP 22

Project: CCNPP 2 SWEL

Location (Bldg, Elev, Room/Area): AUX, -15.00 ft, CAL-AB-102

Manufacturer/Model: _____

Instructions for Completing Checklist

This checklist may be used to document the results of the Seismic Walkdown of an item of equipment on the SWEL. The space below each of the following questions may be used to record the results of judgments and findings. Additional space is provided at the end of this checklist for documenting other comments.

Anchorage

1. Is anchorage configuration verification required (i.e., is the item one of the 50% of SWEL items requiring such verification)? Yes

2. Is the anchorage free of bent, broken, missing or loose hardware? Yes

3. Is the anchorage free of corrosion that is more than mild surface oxidation? Yes

4. Is the anchorage free of visible cracks in the concrete near the anchors? Yes

5. Is the anchorage configuration consistent with plant documentation? (Note: This question only applies if the item is one of the 50% for which an anchorage configuration verification is required.) Yes
Anchorage is consistent with drawings FSK-C-70, FSK-M-331 and calculation CA02066.

6. Based on the above anchorage evaluations, is the anchorage free of potentially adverse seismic conditions? Yes

ATTACHMENT 3
WALKDOWN CHECKLISTS

Status: Y N U

Seismic Walkdown Checklist (SWC)

Equipment ID No.: 2PUMPSILPSI22

Equipment Class: (5) Horizontal Pumps

Equipment Description: SI LPSI PUMP 22

Interaction Effects

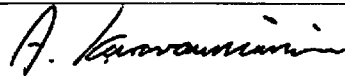
7. Are soft targets free from impact by nearby equipment or structures? Yes
8. Are overhead equipment, distribution systems, ceiling tiles and lighting, and masonry block walls not likely to collapse onto the equipment? Yes
9. Do attached lines have adequate flexibility to avoid damage? Yes
Noted small bore piping, judged flexible and not a seismic concern.
10. Based on the above seismic interaction evaluations, is equipment free of potentially adverse seismic interaction effects? Yes
-

Other Adverse Conditions

11. Have you looked for and found no adverse seismic conditions that could adversely affect the safety functions of the equipment? Yes
-

Comments

Evaluated by:



A. Karavoussianis

Date: 11/09/2012



C. Figliolini

11/09/2012

Photos

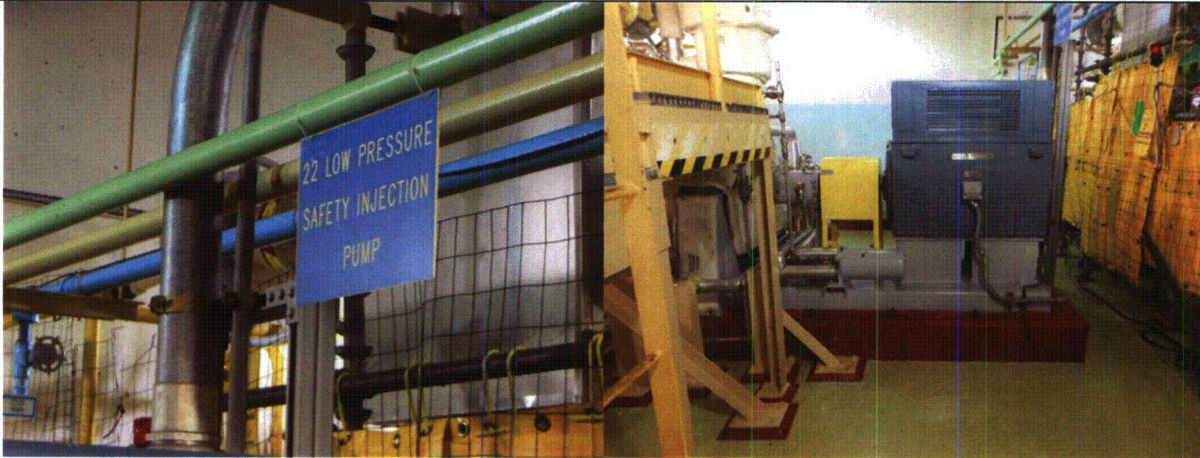
ATTACHMENT 3

WALKDOWN CHECKLISTS

Status: Y N U

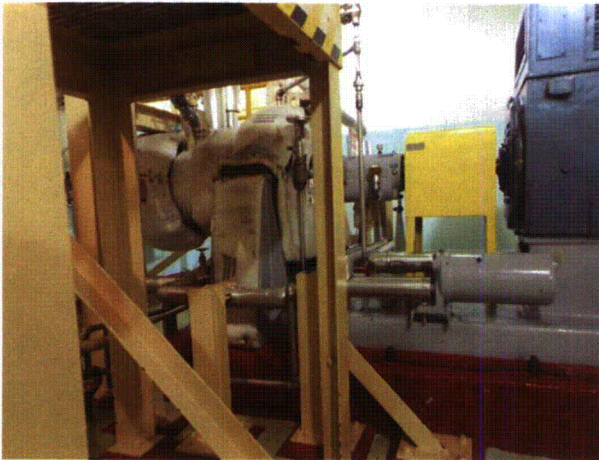
Seismic Walkdown Checklist (SWC)

Equipment ID No.: 2PUMPSILPSI22
Equipment Class: (5) Horizontal Pumps
Equipment Description: SI LPSI PUMP 22



2PUMPSILPSI22 8-7-12 272

2PUMPSILPSI22 8-7-12 273



2PUMPSILPSI22 8-7-12 274

ATTACHMENT 3
WALKDOWN CHECKLISTS

Status: Y N U

Seismic Walkdown Checklist (SWC)

Equipment ID No.: 2PUMPSRW23

Equipment Class: (5) Horizontal Pumps

Equipment Description: 23 SERVICE WATER PUMP

Project: CCNPP 2 SWEL

Location (Bldg, Elev, Room/Area): AUX, 5.00 ft, CAL-AB-205

Manufacturer/Model: _____

Instructions for Completing Checklist

This checklist may be used to document the results of the Seismic Walkdown of an item of equipment on the SWEL. The space below each of the following questions may be used to record the results of judgments and findings. Additional space is provided at the end of this checklist for documenting other comments.

Anchorage

1. Is anchorage configuration verification required (i.e., is the item one of the 50% of SWEL items requiring such verification)? Yes

2. Is the anchorage free of bent, broken, missing or loose hardware? Yes

3. Is the anchorage free of corrosion that is more than mild surface oxidation? Yes

4. Is the anchorage free of visible cracks in the concrete near the anchors? Yes

5. Is the anchorage configuration consistent with plant documentation? (Note: This question only applies if the item is one of the 50% for which an anchorage configuration verification is required.) Yes
Anchorage is consistent with drawing FSK-C-97.

6. Based on the above anchorage evaluations, is the anchorage free of potentially adverse seismic conditions? Yes

ATTACHMENT 3
WALKDOWN CHECKLISTS

Status: Y N U

Seismic Walkdown Checklist (SWC)

Equipment ID No.: 2PUMPSRW23

Equipment Class: (5) Horizontal Pumps

Equipment Description: 23 SERVICE WATER PUMP

Interaction Effects

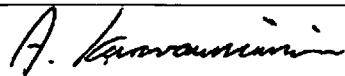
7. Are soft targets free from impact by nearby equipment or structures? Yes
8. Are overhead equipment, distribution systems, ceiling tiles and lighting, and masonry block walls not likely to collapse onto the equipment? Yes
Observed a sight glass without a cage, but there no overhead hazard therefore judged not be a concern.
9. Do attached lines have adequate flexibility to avoid damage? Yes
10. Based on the above seismic interaction evaluations, is equipment free of potentially adverse seismic interaction effects? Yes
-

Other Adverse Conditions

11. Have you looked for and found no adverse seismic conditions that could adversely affect the safety functions of the equipment? Yes
-

Comments

Evaluated by:



A. Karavoussianis

Date: 11/09/2012



C. Figliolini

11/09/2012

Photos

ATTACHMENT 3
WALKDOWN CHECKLISTS

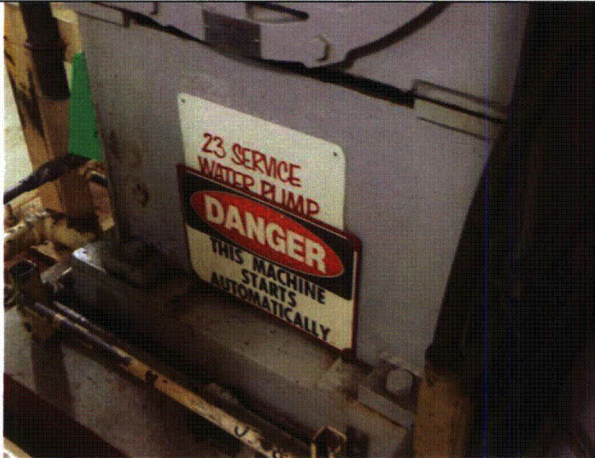
Status: Y N U

Seismic Walkdown Checklist (SWC)

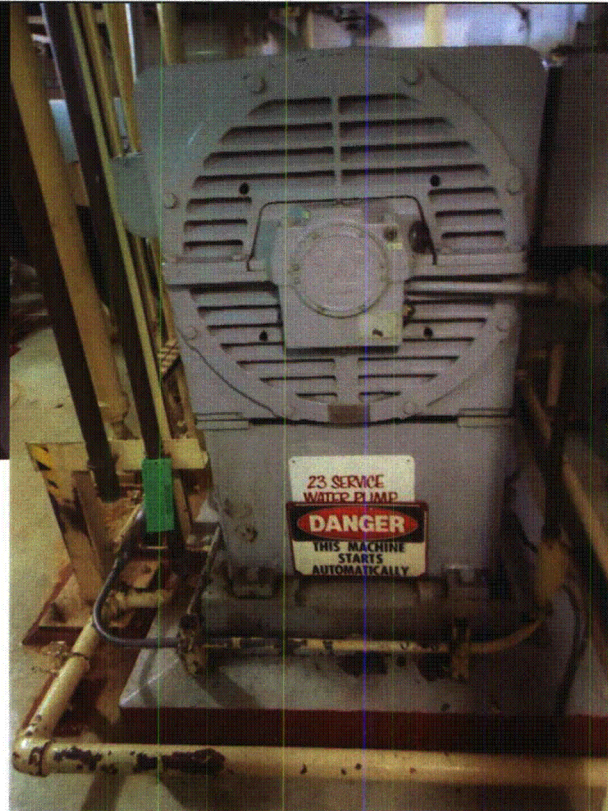
Equipment ID No.: 2PUMPSRW23

Equipment Class: (5) Horizontal Pumps

Equipment Description: 23 SERVICE WATER PUMP



2PUMPSRW23 8-6-12 317



2PUMPSRW23 8-6-12 318

ATTACHMENT 3

WALKDOWN CHECKLISTS

Status: Y N U

Seismic Walkdown Checklist (SWC)

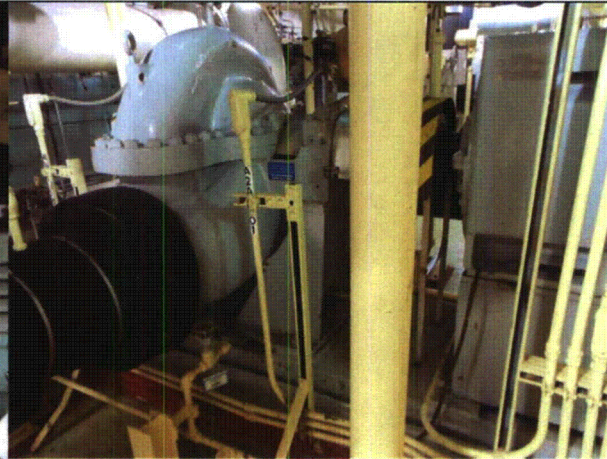
Equipment ID No.: 2PUMPSRW23

Equipment Class: (5) Horizontal Pumps

Equipment Description: 23 SERVICE WATER PUMP



2PUMPSRW23 8-6-12 319



2PUMPSRW23 8-6-12 320

ATTACHMENT 3
WALKDOWN CHECKLISTS

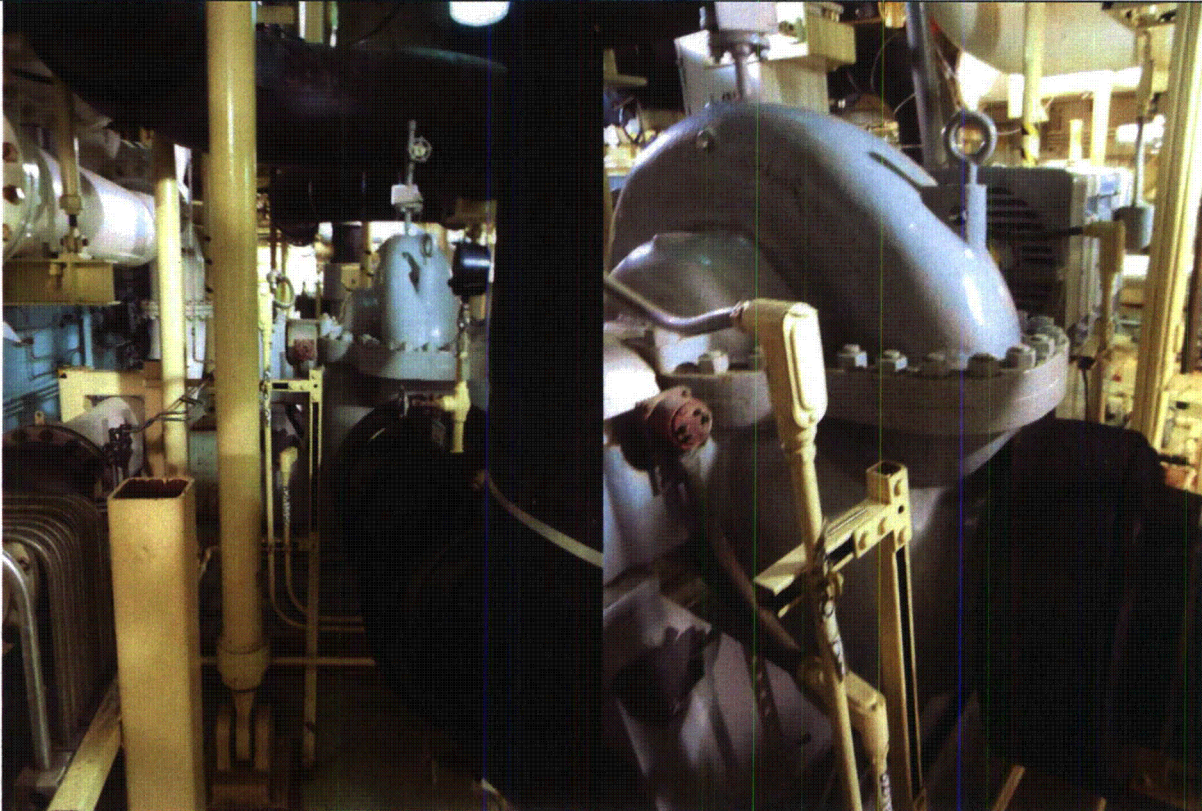
Status: Y N U

Seismic Walkdown Checklist (SWC)

Equipment ID No.: 2PUMPSRW23

Equipment Class: (5) Horizontal Pumps

Equipment Description: 23 SERVICE WATER PUMP



2PUMPSRW23 8-6-12 321

2PUMPSRW23 8-6-12 322

ATTACHMENT 3
WALKDOWN CHECKLISTS

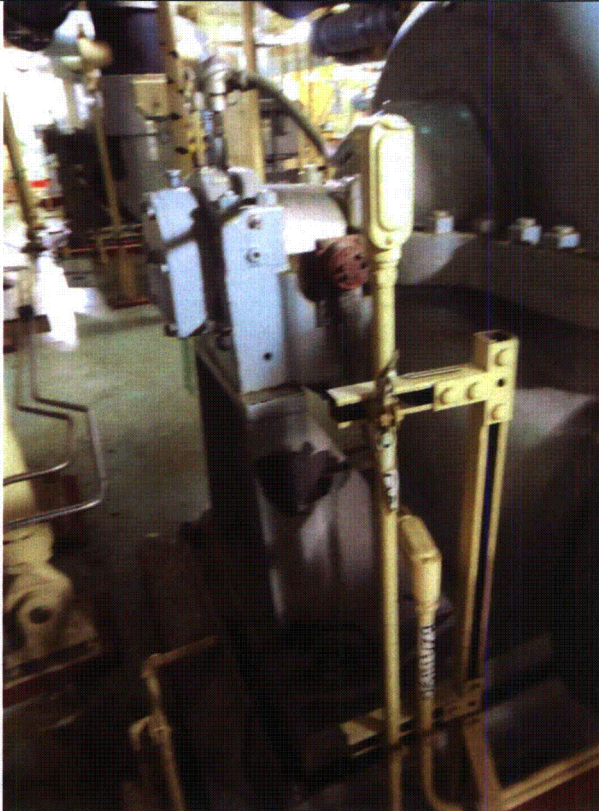
Status: Y N U

Seismic Walkdown Checklist (SWC)

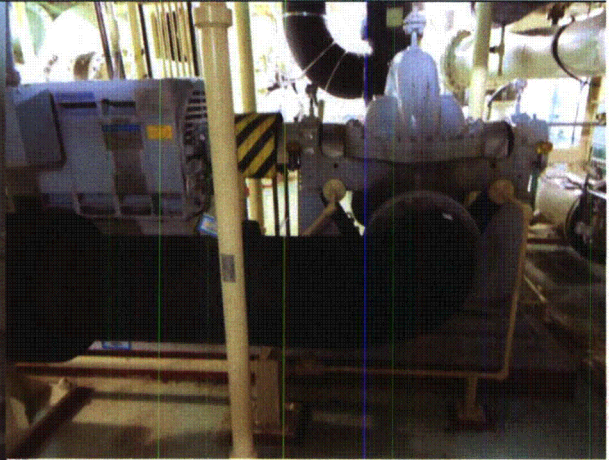
Equipment ID No.: 2PUMPSRW23

Equipment Class: (5) Horizontal Pumps

Equipment Description: 23 SERVICE WATER PUMP



2PUMPSRW23 8-6-12 323



2PUMPSRW23 8-6-12 324

ATTACHMENT 3
WALKDOWN CHECKLISTS

Status: Y N U

Seismic Walkdown Checklist (SWC)

Equipment ID No.: 2PUMPSRW23

Equipment Class: (5) Horizontal Pumps

Equipment Description: 23 SERVICE WATER PUMP



2PUMPSRW23 8-6-12 326

2PUMPSRW23 8-6-12 325

ATTACHMENT 3
WALKDOWN CHECKLISTS

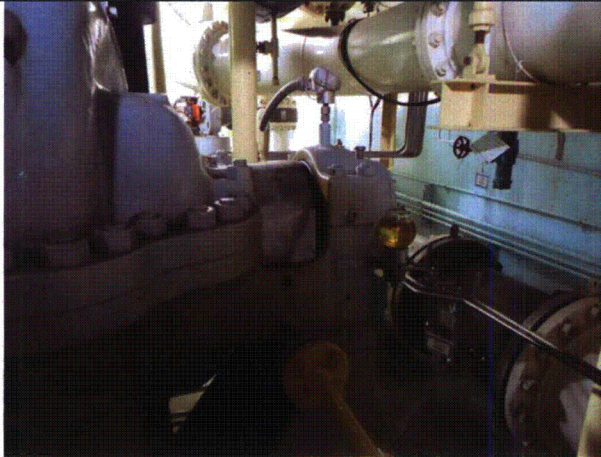
Status: Y N U

Seismic Walkdown Checklist (SWC)

Equipment ID No.: 2PUMPSRW23

Equipment Class: (5) Horizontal Pumps

Equipment Description: 23 SERVICE WATER PUMP



2PUMPSRW23 8-6-12 327



2PUMPSRW23 8-6-12 328

ATTACHMENT 3

WALKDOWN CHECKLISTS

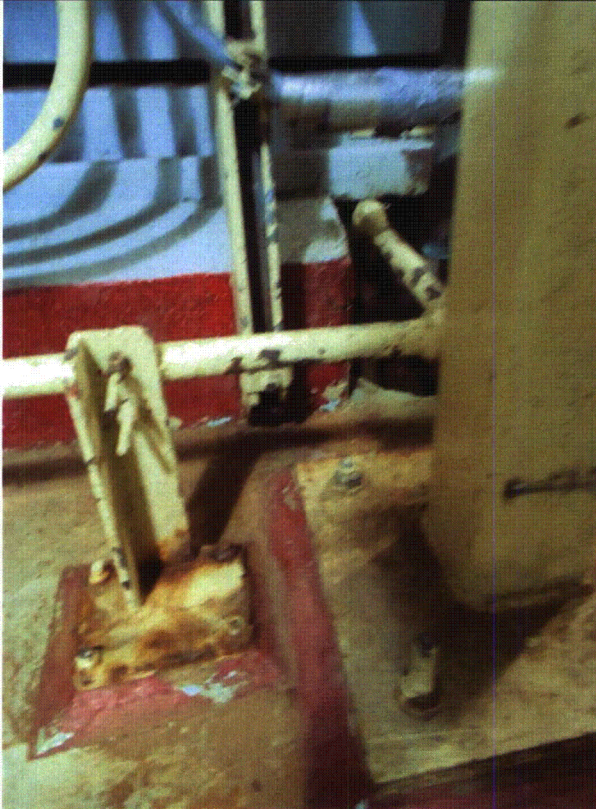
Status: Y N U

Seismic Walkdown Checklist (SWC)

Equipment ID No.: 2PUMPSRW23

Equipment Class: (5) Horizontal Pumps

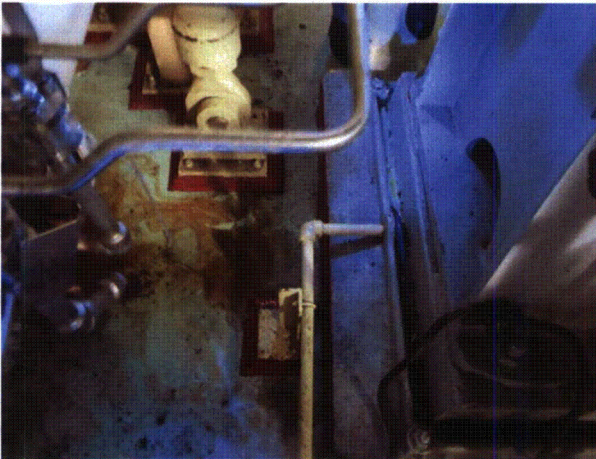
Equipment Description: 23 SERVICE WATER PUMP



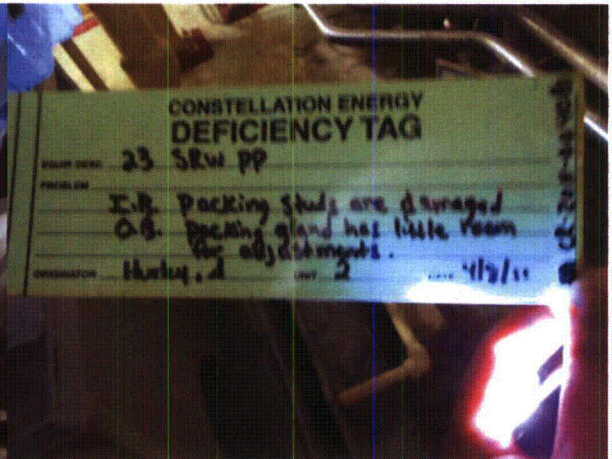
2PUMPSRW23 8-6-12 329



2PUMPSRW23 8-6-12 330



2PUMPSRW23 8-6-12 331



2PUMPSRW23 8-6-12 332

ATTACHMENT 3
WALKDOWN CHECKLISTS

Status: Y N U

Seismic Walkdown Checklist (SWC)

Equipment ID No.: 2PUMPSW23

Equipment Class: (6) Vertical Pumps

Equipment Description: 23 SW PUMP

Project: CCNPP 2 SWEL

Location (Bldg, Elev, Room/Area): Intake, -7.00 ft, CAL-ISPR-INT2

Manufacturer/Model: _____

Instructions for Completing Checklist

This checklist may be used to document the results of the Seismic Walkdown of an item of equipment on the SWEL. The space below each of the following questions may be used to record the results of judgments and findings. Additional space is provided at the end of this checklist for documenting other comments.

Anchorage

1. Is anchorage configuration verification required (i.e., is the item one of the 50% of SWEL items requiring such verification)? No

2. Is the anchorage free of bent, broken, missing or loose hardware? No
Anchorage is inaccessible.

3. Is the anchorage free of corrosion that is more than mild surface oxidation? No
Anchorage is inaccessible.

4. Is the anchorage free of visible cracks in the concrete near the anchors? No
Anchorage is inaccessible.

5. Is the anchorage configuration consistent with plant documentation? (Note: This question only applies if the item is one of the 50% for which an anchorage configuration verification is required.) Not Applicable

6. Based on the above anchorage evaluations, is the anchorage free of potentially adverse seismic conditions? No
Anchorage is inaccessible.

ATTACHMENT 3
WALKDOWN CHECKLISTS

Status: Y N U

Seismic Walkdown Checklist (SWC)

Equipment ID No.: 2PUMPSW23

Equipment Class: (6) Vertical Pumps

Equipment Description: 23 SW PUMP

Interaction Effects

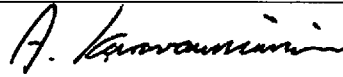
7. Are soft targets free from impact by nearby equipment or structures? Yes
8. Are overhead equipment, distribution systems, ceiling tiles and lighting, and masonry block walls not likely to collapse onto the equipment? Yes
9. Do attached lines have adequate flexibility to avoid damage? Yes
10. Based on the above seismic interaction evaluations, is equipment free of potentially adverse seismic interaction effects? Yes
-

Other Adverse Conditions

11. Have you looked for and found no adverse seismic conditions that could adversely affect the safety functions of the equipment? Yes
-

Comments

Evaluated by:



A. Karavoussianis

Date: 11/09/2012



C. Figliolini

11/09/2012

Photos

ATTACHMENT 3
WALKDOWN CHECKLISTS

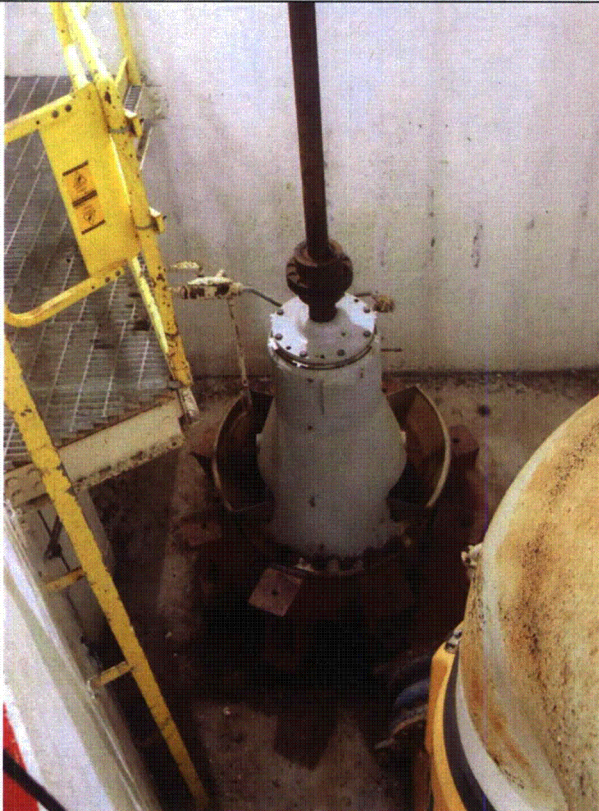
Status: Y N U

Seismic Walkdown Checklist (SWC)

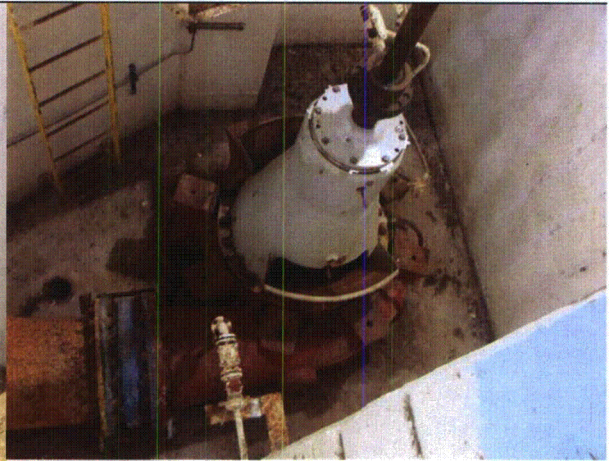
Equipment ID No.: 2PUMPSW23

Equipment Class: (6) Vertical Pumps

Equipment Description: 23 SW PUMP



2PUMPSW23 8-16-12 156



2PUMPSW23 8-16-12 158

ATTACHMENT 3
WALKDOWN CHECKLISTS

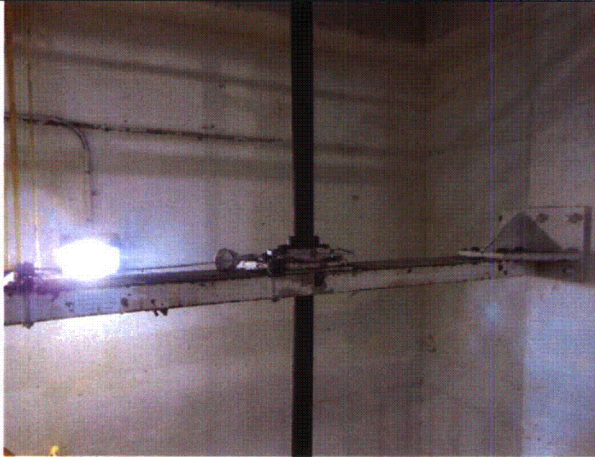
Status: Y N U

Seismic Walkdown Checklist (SWC)

Equipment ID No.: 2PUMPSW23

Equipment Class: (6) Vertical Pumps

Equipment Description: 23 SW PUMP



2PUMPSW23 8-16-12 159



2PUMPSW23 8-16-12 160

ATTACHMENT 3
WALKDOWN CHECKLISTS

Status: Y N U

Seismic Walkdown Checklist (SWC)

Equipment ID No.: 2RY150/151/T21A

Equipment Class: (4) Transformers

Equipment Description: 480V SERV XFMR U-440-21A

Project: CCNPP 2 SWEL

Location (Bldg, Elev, Room/Area): AUX, 27.00 ft, CAL-AB-311

Manufacturer/Model: _____

Instructions for Completing Checklist

This checklist may be used to document the results of the Seismic Walkdown of an item of equipment on the SWEL. The space below each of the following questions may be used to record the results of judgments and findings. Additional space is provided at the end of this checklist for documenting other comments.

Anchorage

1. Is anchorage configuration verification required (i.e., is the item one of the 50% of SWEL items requiring such verification)? Yes

2. Is the anchorage free of bent, broken, missing or loose hardware? Yes

3. Is the anchorage free of corrosion that is more than mild surface oxidation? Yes

4. Is the anchorage free of visible cracks in the concrete near the anchors? Not Applicable

5. Is the anchorage configuration consistent with plant documentation? (Note: This question only applies if the item is one of the 50% for which an anchorage configuration verification is required.) Yes
Anchorage is consistent with calculation CA02066 Pg. 27-7 that shows a minimum required weld length of 0.7" which is smaller than the as-built measurements.

6. Based on the above anchorage evaluations, is the anchorage free of potentially adverse seismic conditions? Yes

ATTACHMENT 3
WALKDOWN CHECKLISTS

Status: Y N U

Seismic Walkdown Checklist (SWC)

Equipment ID No.: 2RY150/151/T21A

Equipment Class: (4) Transformers

Equipment Description: 480V SERV XFMR U-440-21A

Interaction Effects

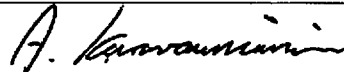
- | | |
|---|-----|
| 7. Are soft targets free from impact by nearby equipment or structures? | Yes |
| | |
| 8. Are overhead equipment, distribution systems, ceiling tiles and lighting, and masonry block walls not likely to collapse onto the equipment? | Yes |
| | |
| 9. Do attached lines have adequate flexibility to avoid damage? | Yes |
| | |
| 10. Based on the above seismic interaction evaluations, is equipment free of potentially adverse seismic interaction effects? | Yes |
-

Other Adverse Conditions

- | | |
|--|-----|
| 11. Have you looked for and found no adverse seismic conditions that could adversely affect the safety functions of the equipment? | Yes |
|--|-----|
-

Comments

Evaluated by:



A. Karavoussianis

Date: 11/09/2012



C. Figliolini

11/09/2012

Photos

ATTACHMENT 3

WALKDOWN CHECKLISTS

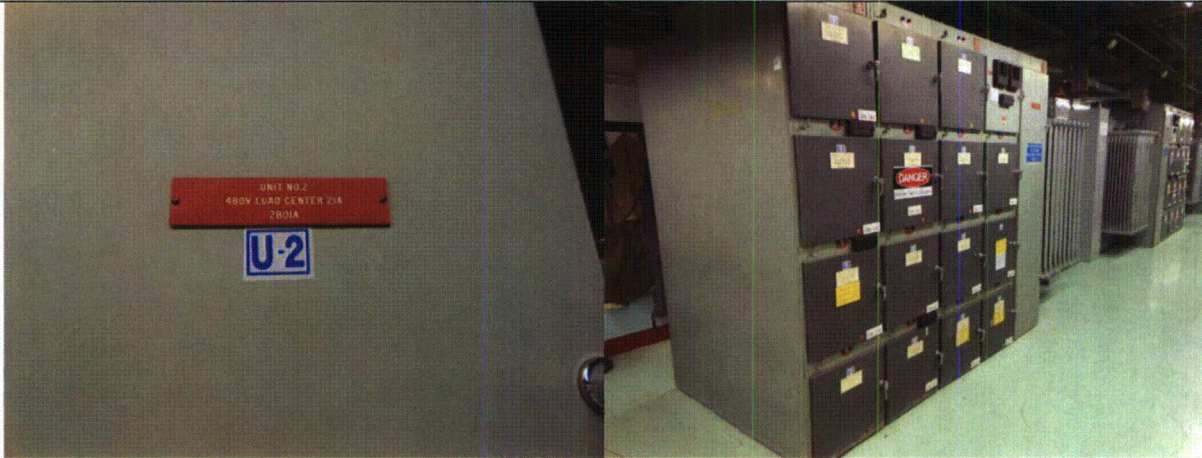
Status: Y N U

Seismic Walkdown Checklist (SWC)

Equipment ID No.: 2RY150/151/T21A

Equipment Class: (4) Transformers

Equipment Description: 480V SERV XFMR U-440-21A



2RY150#151#T21A 8-15-12 104

2RY150#151#T21A 8-15-12 105



2RY150#151#T21A 8-15-12 106

2RY150#151#T21A 8-15-12 107

ATTACHMENT 3
WALKDOWN CHECKLISTS

Status: Y N U

Seismic Walkdown Checklist (SWC)

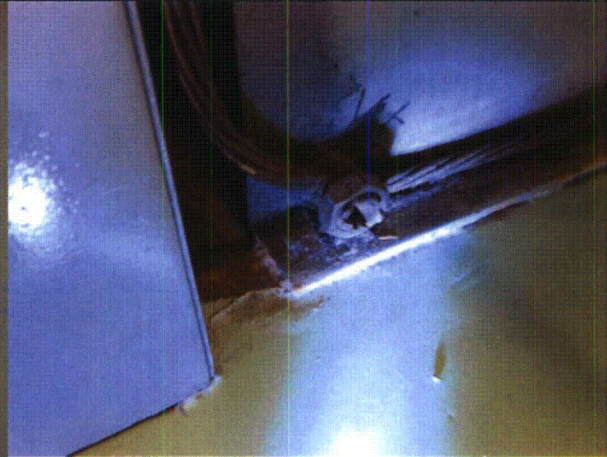
Equipment ID No.: 2RY150/151/T21A

Equipment Class: (4) Transformers

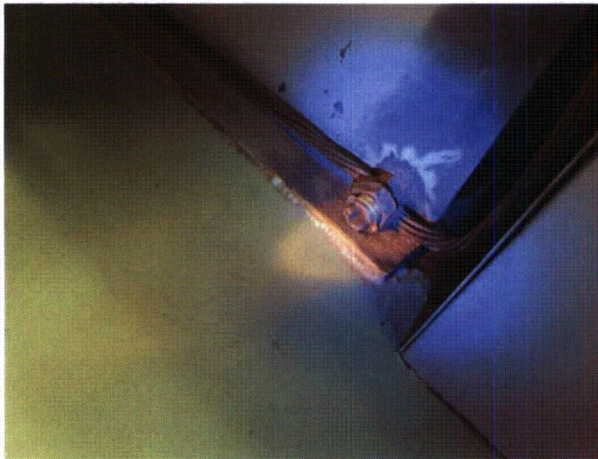
Equipment Description: 480V SERV XFMR U-440-21A



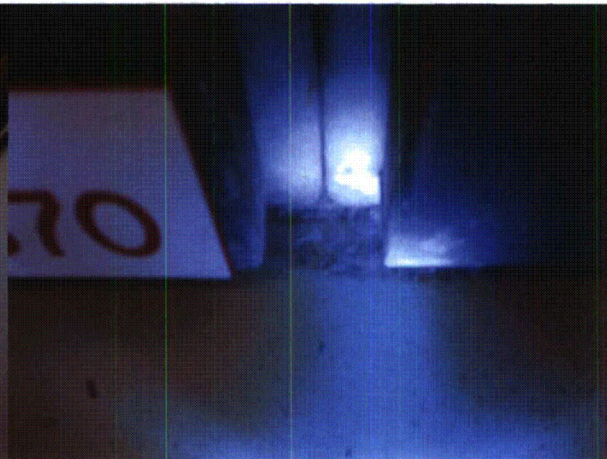
2RY150#151#T21A 8-15-12 108



2RY150#151#T21A 8-15-12 109



2RY150#151#T21A 8-15-12 110



2RY150#151#T21A 8-15-12 111

ATTACHMENT 3
WALKDOWN CHECKLISTS

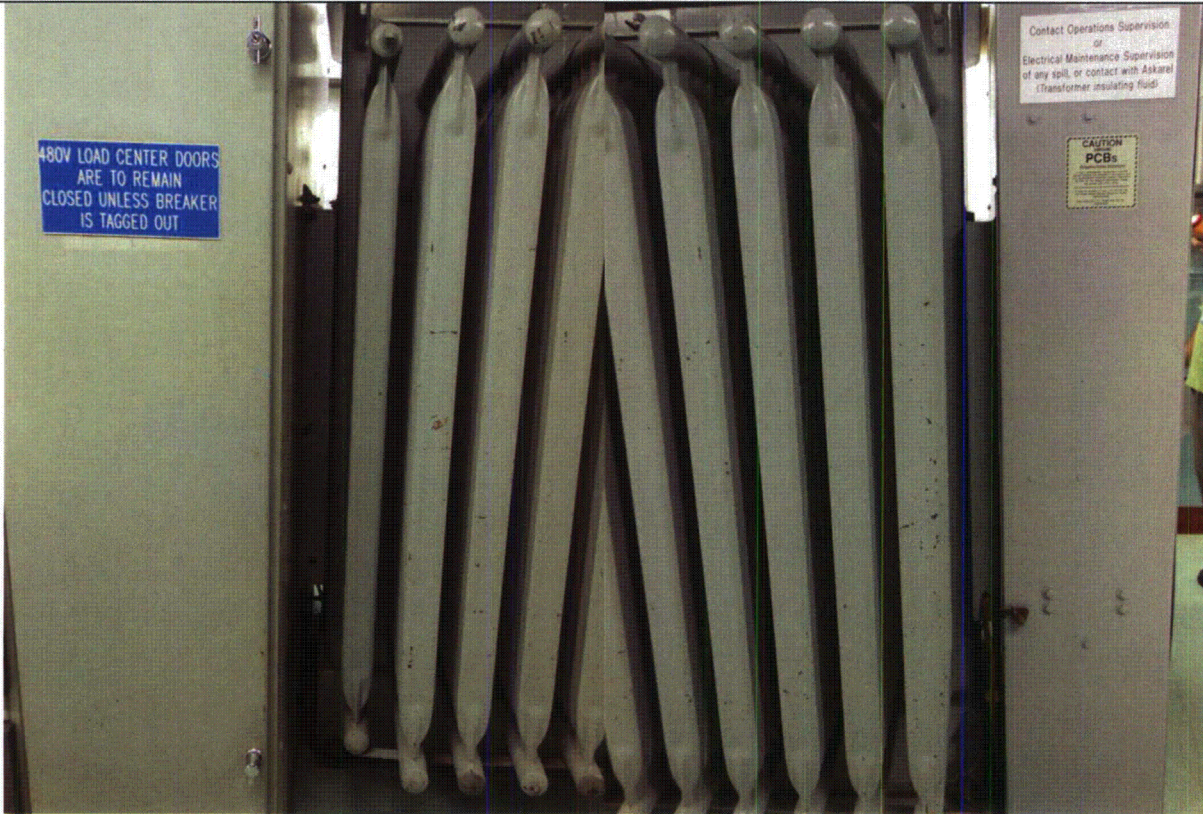
Status: Y N U

Seismic Walkdown Checklist (SWC)

Equipment ID No.: 2RY150/151/T21A

Equipment Class: (4) Transformers

Equipment Description: 480V SERV XFMR U-440-21A



2RY150#151#T21A 8-15-12 112

2RY150#151#T21A 8-15-12 113

ATTACHMENT 3
WALKDOWN CHECKLISTS

Status: Y N U

Seismic Walkdown Checklist (SWC)

Equipment ID No.: 2RY150/151/T21A

Equipment Class: (4) Transformers

Equipment Description: 480V SERV XFMR U-440-21A



2RY150#151#T21A 8-15-12 115

2RY150#151#T21A 8-15-12 114

ATTACHMENT 3

WALKDOWN CHECKLISTS

Status: Y N U

Seismic Walkdown Checklist (SWC)

Equipment ID No.: 2RY150/151/T21B

Equipment Class: (4) Transformers

Equipment Description: 480V SERV XFMR U-440-21B

Project: CCNPP 2 SWEL

Location (Bldg, Elev, Room/Area): AUX, 27.00 ft, CAL-AB-311

Manufacturer/Model: _____

Instructions for Completing Checklist

This checklist may be used to document the results of the Seismic Walkdown of an item of equipment on the SWEL. The space below each of the following questions may be used to record the results of judgments and findings. Additional space is provided at the end of this checklist for documenting other comments.

Anchorage

- | | | |
|----|---|----------------|
| 1. | Is anchorage configuration verification required (i.e., is the item one of the 50% of SWEL items requiring such verification)? | No |
| 2. | Is the anchorage free of bent, broken, missing or loose hardware? | Yes |
| 3. | Is the anchorage free of corrosion that is more than mild surface oxidation? | Yes |
| 4. | Is the anchorage free of visible cracks in the concrete near the anchors? | Yes |
| 5. | Is the anchorage configuration consistent with plant documentation? (Note: This question only applies if the item is one of the 50% for which an anchorage configuration verification is required.) | Not Applicable |
| 6. | Based on the above anchorage evaluations, is the anchorage free of potentially adverse seismic conditions? | Yes |

ATTACHMENT 3
WALKDOWN CHECKLISTS

Status: Y N U

Seismic Walkdown Checklist (SWC)

Equipment ID No.: 2RY150/151/T21B

Equipment Class: (4) Transformers

Equipment Description: 480V SERV XFMR U-440-21B

Interaction Effects

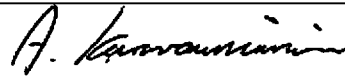
7. Are soft targets free from impact by nearby equipment or structures? Yes
8. Are overhead equipment, distribution systems, ceiling tiles and lighting, and masonry block walls not likely to collapse onto the equipment? Yes
9. Do attached lines have adequate flexibility to avoid damage? Yes
10. Based on the above seismic interaction evaluations, is equipment free of potentially adverse seismic interaction effects? Yes
-

Other Adverse Conditions

11. Have you looked for and found no adverse seismic conditions that could adversely affect the safety functions of the equipment? Yes
-

Comments

Evaluated by:



A. Karavoussianis

Date: 11/09/2012



C. Figliolini

11/09/2012

Photos

ATTACHMENT 3
WALKDOWN CHECKLISTS

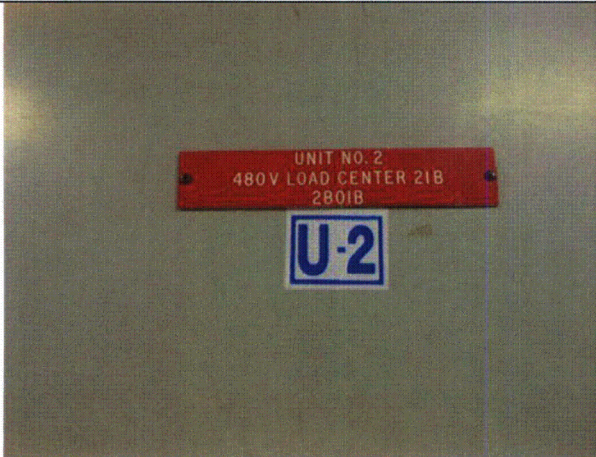
Status: Y N U

Seismic Walkdown Checklist (SWC)

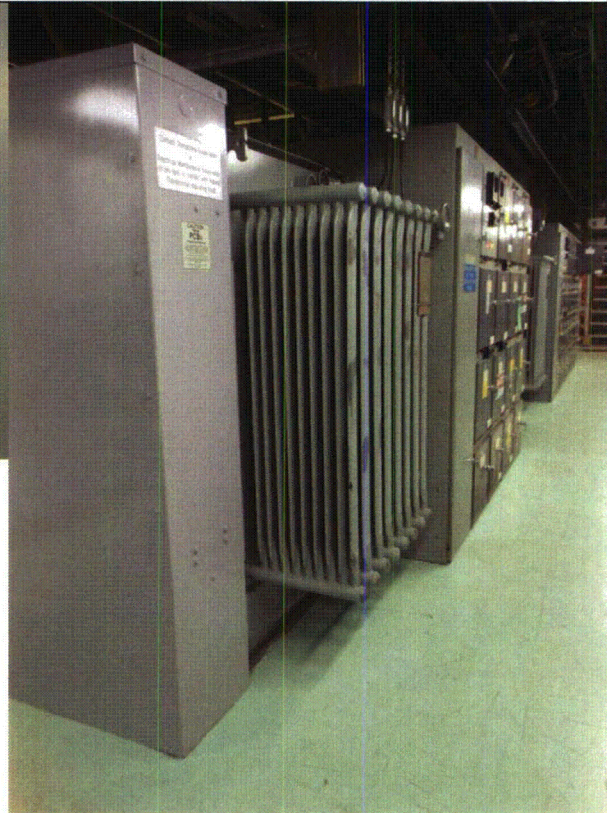
Equipment ID No.: 2RY150/151/T21B

Equipment Class: (4) Transformers

Equipment Description: 480V SERV XFMR U-440-21B



2RY150#151#T21B 8-15-12 116



2RY150#151#T21B 8-15-12 117

ATTACHMENT 3
WALKDOWN CHECKLISTS

Status: Y N U

Seismic Walkdown Checklist (SWC)

Equipment ID No.: 2RY150/151/T21B

Equipment Class: (4) Transformers

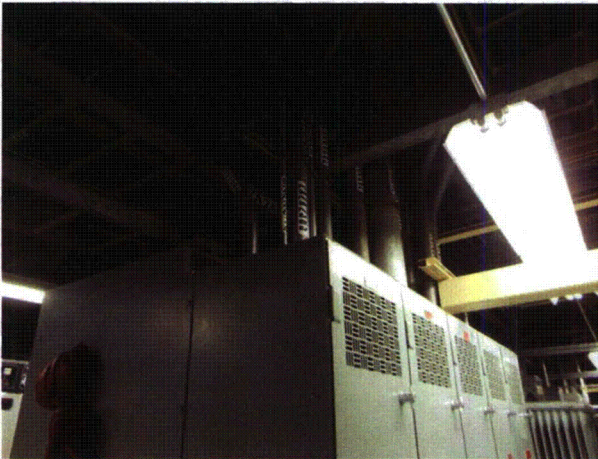
Equipment Description: 480V SERV XFMR U-440-21B



2RY150#151#T21B 8-15-12 118



2RY150#151#T21B 8-15-12 119



2RY150#151#T21B 8-15-12 120



2RY150#151#T21B 8-15-12 121

ATTACHMENT 3
WALKDOWN CHECKLISTS

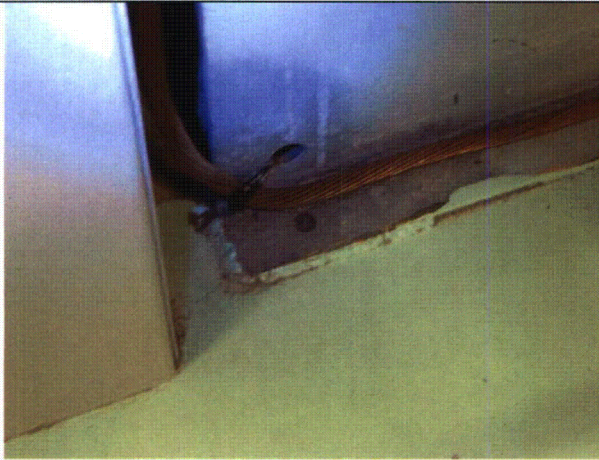
Status: Y N U

Seismic Walkdown Checklist (SWC)

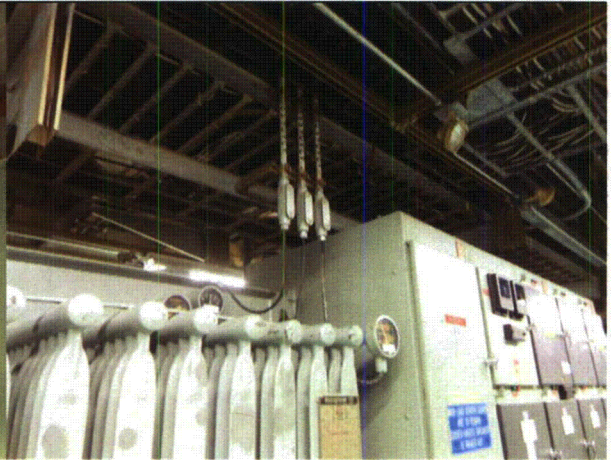
Equipment ID No.: 2RY150/151/T21B

Equipment Class: (4) Transformers

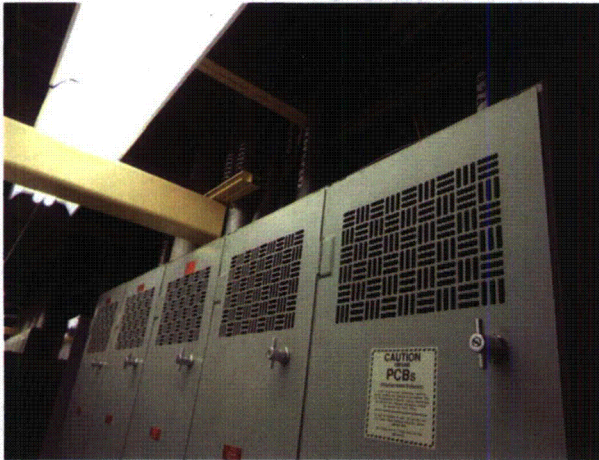
Equipment Description: 480V SERV XFMR U-440-21B



2RY150#151#T21B 8-15-12 122



2RY150#151#T21B 8-15-12 123



2RY150#151#T21B 8-15-12 124