

ATTACHMENT 3
WALKDOWN CHECKLISTS

Status: Y N U

Seismic Walkdown Checklist (SWC)

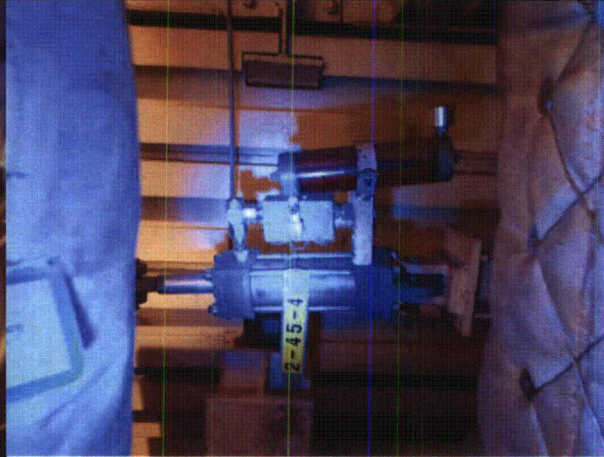
Equipment ID No.: 2MOV4516

Equipment Class: (8) Motor-Operated and Solenoid-Operated Valves

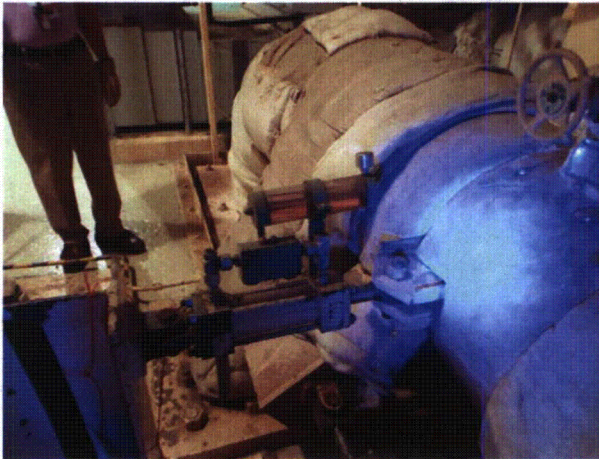
Equipment Description: 21 SG FW ISOL



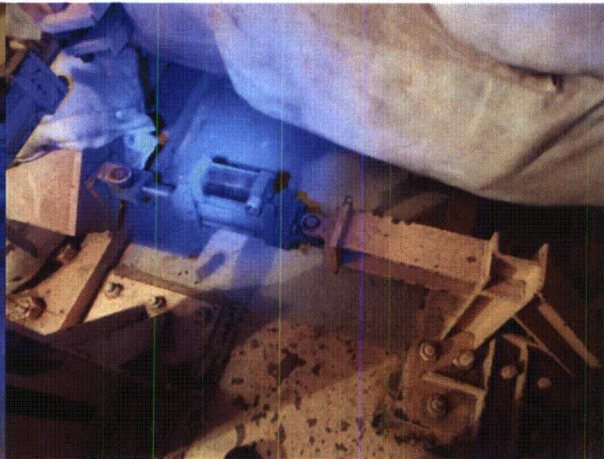
2MOV4516 8-9-12 005



2MOV4516 8-9-12 006



2MOV4516 8-9-12 007



2MOV4516 8-9-12 008

ATTACHMENT 3
WALKDOWN CHECKLISTS

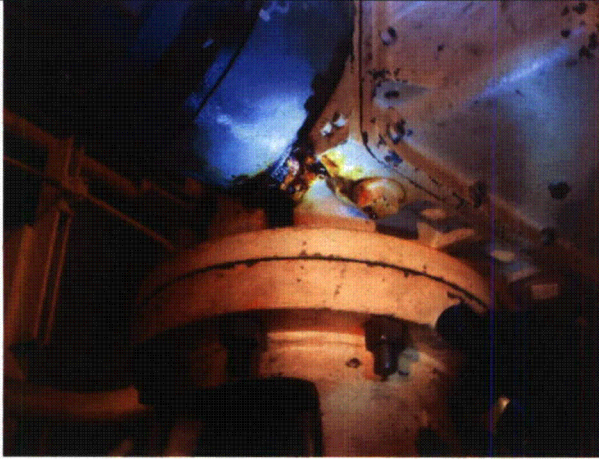
Status: Y N U

Seismic Walkdown Checklist (SWC)

Equipment ID No.: 2MOV4516

Equipment Class: (8) Motor-Operated and Solenoid-Operated Valves

Equipment Description: 21 SG FW ISOL



2MOV4516 8-9-12 009

ATTACHMENT 3
WALKDOWN CHECKLISTS

Status: Y N U

Seismic Walkdown Checklist (SWC)

Equipment ID No.: 2MOV4517

Equipment Class: (8) Motor-Operated and Solenoid-Operated Valves

Equipment Description: 22 SG FW ISOL

Project: CCNPP 2 SWEL

Location (Bldg, Elev, Room/Area): AUX, 27.00 ft, CAL-AB-309

Manufacturer/Model: _____

Instructions for Completing Checklist

This checklist may be used to document the results of the Seismic Walkdown of an item of equipment on the SWEL. The space below each of the following questions may be used to record the results of judgments and findings. Additional space is provided at the end of this checklist for documenting other comments.

Anchorage

1. Is anchorage configuration verification required (i.e., is the item one of the 50% of SWEL items requiring such verification)? No

2. Is the anchorage free of bent, broken, missing or loose hardware? Not Applicable

3. Is the anchorage free of corrosion that is more than mild surface oxidation? Not Applicable

4. Is the anchorage free of visible cracks in the concrete near the anchors? Not Applicable

5. Is the anchorage configuration consistent with plant documentation? (Note: This question only applies if the item is one of the 50% for which an anchorage configuration verification is required.) Not Applicable

6. Based on the above anchorage evaluations, is the anchorage free of potentially adverse seismic conditions? Yes

ATTACHMENT 3
WALKDOWN CHECKLISTS

Status: Y N U

Seismic Walkdown Checklist (SWC)

Equipment ID No.: 2MOV4517

Equipment Class: (8) Motor-Operated and Solenoid-Operated Valves

Equipment Description: 22 SG FW ISOL

Interaction Effects

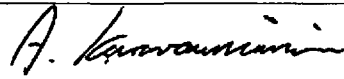
7. Are soft targets free from impact by nearby equipment or structures? Yes
8. Are overhead equipment, distribution systems, ceiling tiles and lighting, and masonry block walls not likely to collapse onto the equipment? Yes
9. Do attached lines have adequate flexibility to avoid damage? Yes
Flex conduit is connected to rigid conduit that is mounted to nearby concrete column. Flex conduit has adequate flexibility therefore not a seismic concern.
10. Based on the above seismic interaction evaluations, is equipment free of potentially adverse seismic interaction effects? Yes
-

Other Adverse Conditions

11. Have you looked for and found no adverse seismic conditions that could adversely affect the safety functions of the equipment? Yes
-

Comments

Evaluated by:



A. Karavoussianis

Date: 11/09/2012



C. Figliolini

11/09/2012

Photos

ATTACHMENT 3
WALKDOWN CHECKLISTS

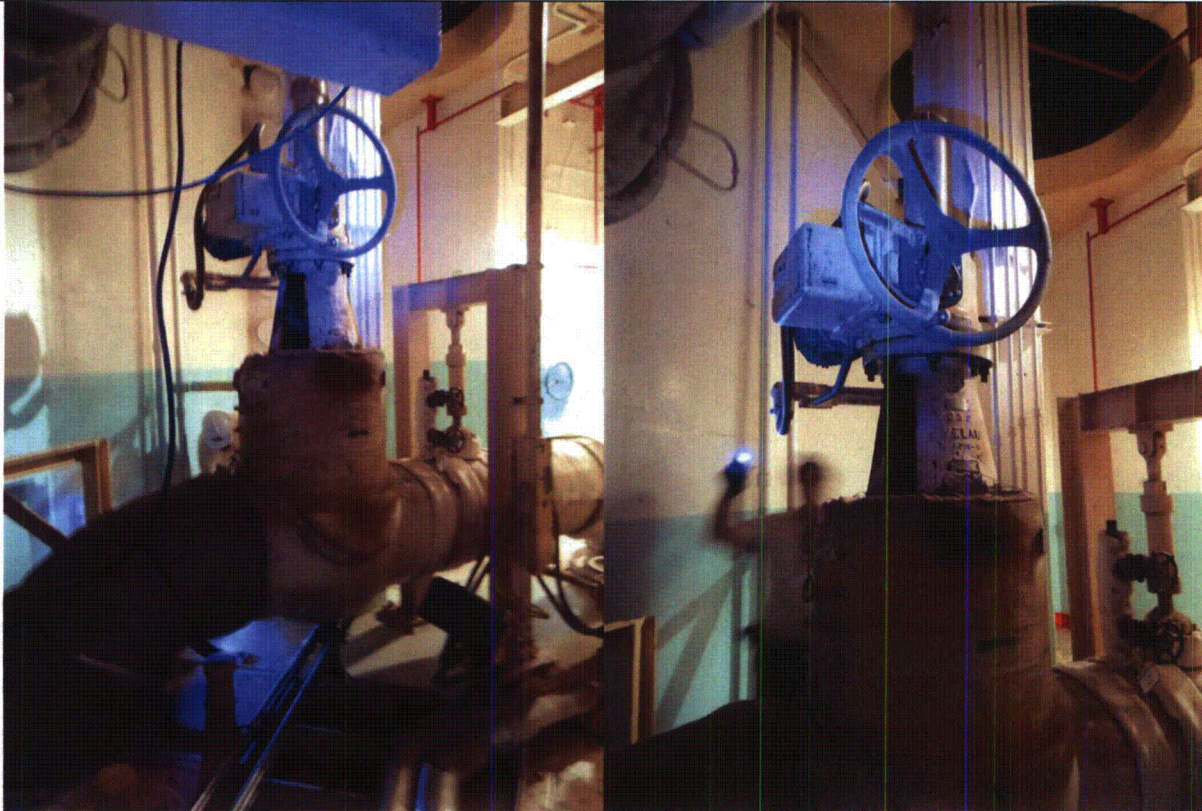
Status: Y N U

Seismic Walkdown Checklist (SWC)

Equipment ID No.: 2MOV4517

Equipment Class: (8) Motor-Operated and Solenoid-Operated Valves

Equipment Description: 22 SG FW ISOL



2MOV4517 8-9-12 011

2MOV4517 8-9-12 012

ATTACHMENT 3

WALKDOWN CHECKLISTS

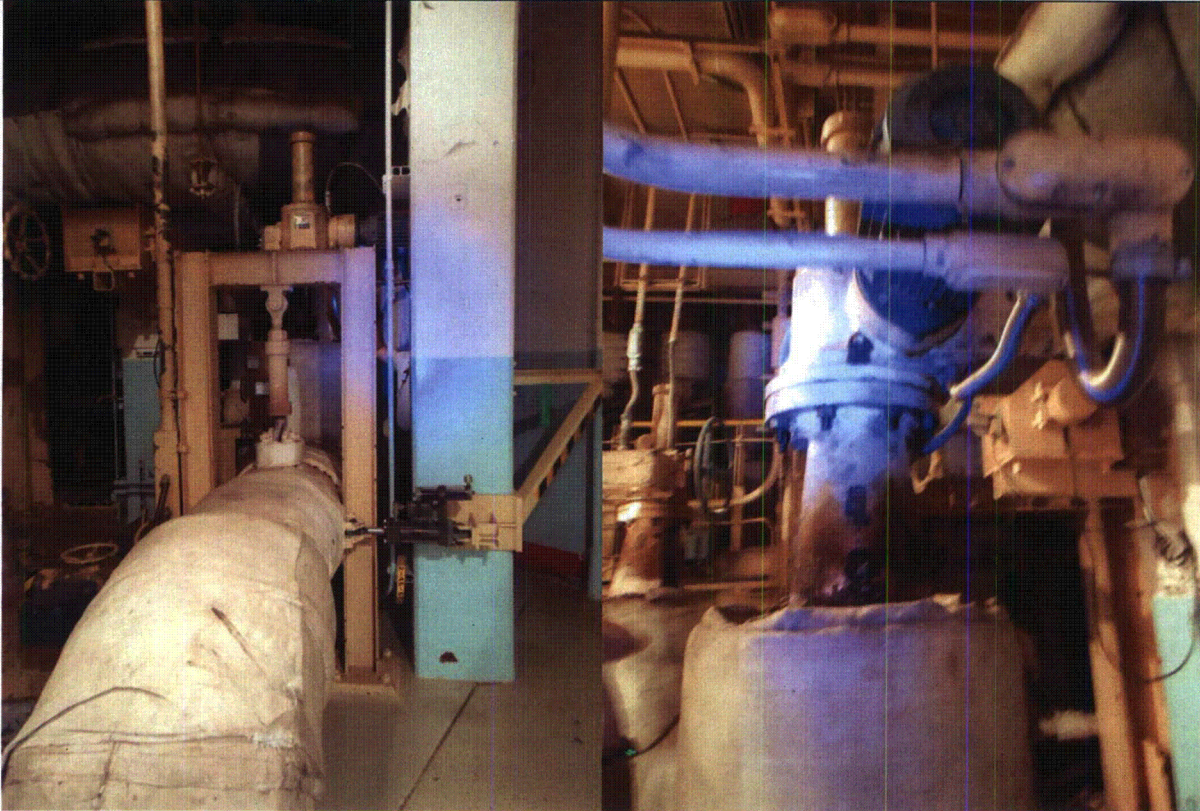
Status: Y N U

Seismic Walkdown Checklist (SWC)

Equipment ID No.: 2MOV4517

Equipment Class: (8) Motor-Operated and Solenoid-Operated Valves

Equipment Description: 22 SG FW ISOL



2MOV4517 8-9-12 013

2MOV4517 8-9-12 014

ATTACHMENT 3
WALKDOWN CHECKLISTS

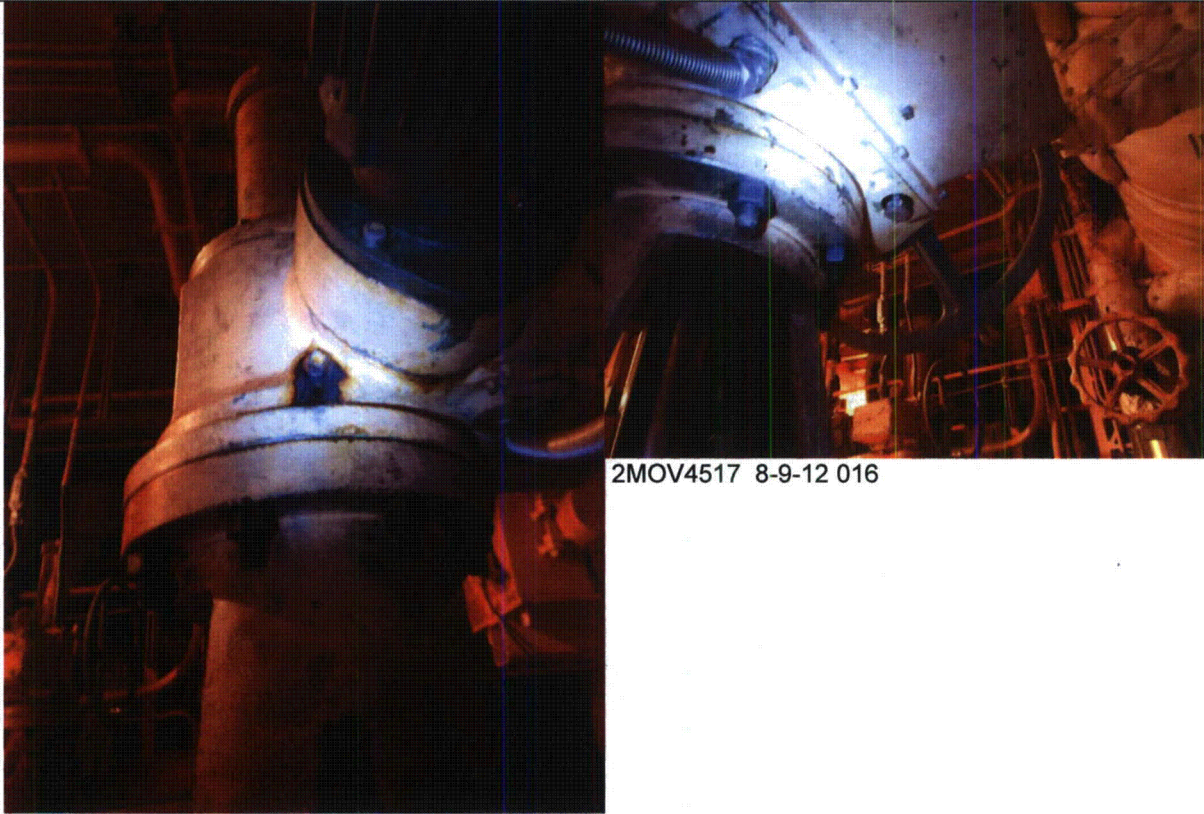
Status: Y N U

Seismic Walkdown Checklist (SWC)

Equipment ID No.: 2MOV4517

Equipment Class: (8) Motor-Operated and Solenoid-Operated Valves

Equipment Description: 22 SG FW ISOL



2MOV4517 8-9-12 015

2MOV4517 8-9-12 016

ATTACHMENT 3
WALKDOWN CHECKLISTS

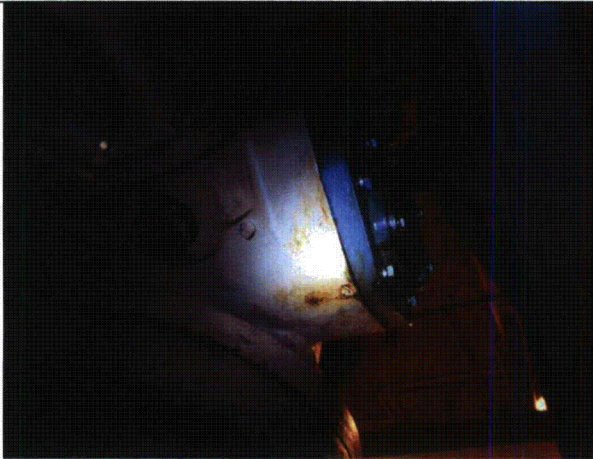
Status: Y N U

Seismic Walkdown Checklist (SWC)

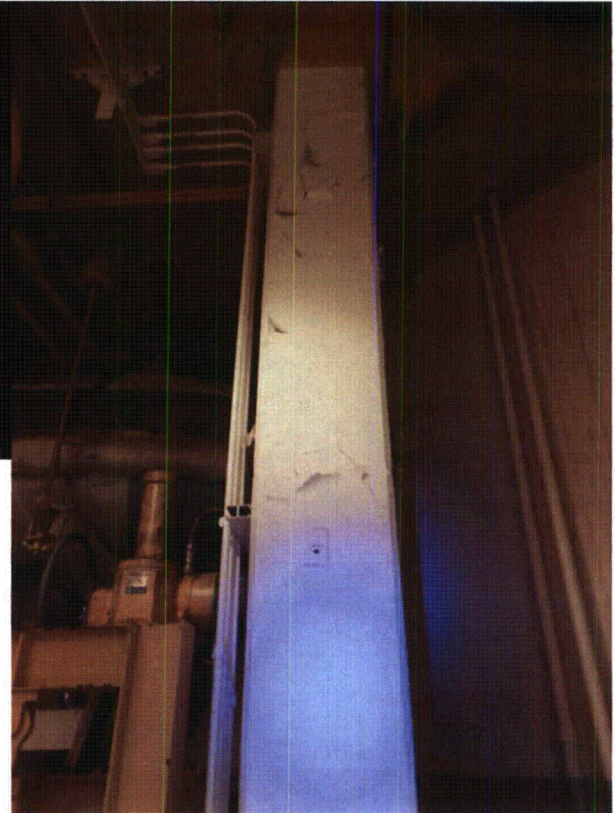
Equipment ID No.: 2MOV4517

Equipment Class: (8) Motor-Operated and Solenoid-Operated Valves

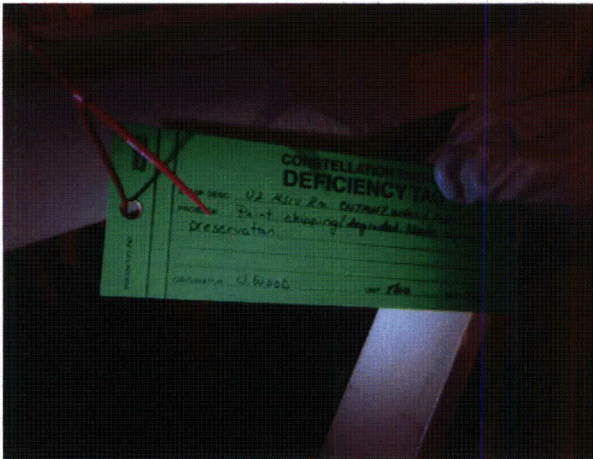
Equipment Description: 22 SG FW ISOL



2MOV4517 8-9-12 017



2MOV4517 8-9-12 018



2MOV4517 8-9-12 019



2MOV4517 8-9-12 020

ATTACHMENT 3
WALKDOWN CHECKLISTS

Status: Y N U

Seismic Walkdown Checklist (SWC)

Equipment ID No.: 2MOV508

Equipment Class: (8) Motor-Operated and Solenoid-Operated Valves

Equipment Description: 22 BAST GRAVITY FD

Project: CCNPP 2 SWEL

Location (Bldg, Elev, Room/Area): AUX, 5.00 ft, CAL-AB-215

Manufacturer/Model: _____

Instructions for Completing Checklist

This checklist may be used to document the results of the Seismic Walkdown of an item of equipment on the SWEL. The space below each of the following questions may be used to record the results of judgments and findings. Additional space is provided at the end of this checklist for documenting other comments.

Anchorage

1. Is anchorage configuration verification required (i.e., is the item one of the 50% of SWEL items requiring such verification)? No

2. Is the anchorage free of bent, broken, missing or loose hardware? Not Applicable

3. Is the anchorage free of corrosion that is more than mild surface oxidation? Not Applicable

4. Is the anchorage free of visible cracks in the concrete near the anchors? Not Applicable

5. Is the anchorage configuration consistent with plant documentation? (Note: This question only applies if the item is one of the 50% for which an anchorage configuration verification is required.) Not Applicable

6. Based on the above anchorage evaluations, is the anchorage free of potentially adverse seismic conditions? Yes

ATTACHMENT 3
WALKDOWN CHECKLISTS

Status: Y N U

Seismic Walkdown Checklist (SWC)

Equipment ID No.: 2MOV508

Equipment Class: (8) Motor-Operated and Solenoid-Operated Valves

Equipment Description: 22 BAST GRAVITY FD

Interaction Effects

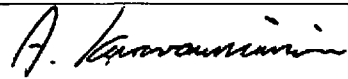
7. Are soft targets free from impact by nearby equipment or structures? Yes
8. Are overhead equipment, distribution systems, ceiling tiles and lighting, and masonry block walls not likely to collapse onto the equipment? Yes
9. Do attached lines have adequate flexibility to avoid damage? Yes
10. Based on the above seismic interaction evaluations, is equipment free of potentially adverse seismic interaction effects? Yes
-

Other Adverse Conditions

11. Have you looked for and found no adverse seismic conditions that could adversely affect the safety functions of the equipment? Yes
-

Comments

Evaluated by:



A. Karavoussianis

Date: 11/09/2012



C. Figliolini

11/09/2012

Photos

ATTACHMENT 3
WALKDOWN CHECKLISTS

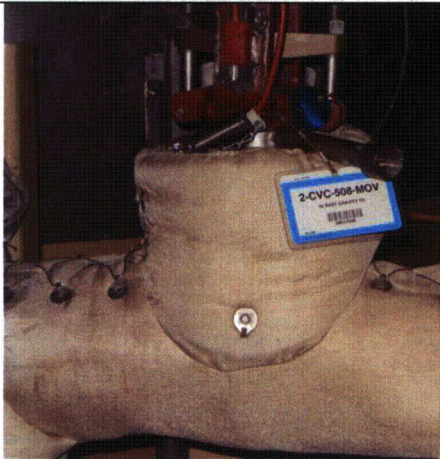
Status: Y N U

Seismic Walkdown Checklist (SWC)

Equipment ID No.: 2MOV508

Equipment Class: (8) Motor-Operated and Solenoid-Operated Valves

Equipment Description: 22 BAST GRAVITY FD



2MOV508 8-6-12 069



2MOV508 8-6-12 070

ATTACHMENT 3
WALKDOWN CHECKLISTS

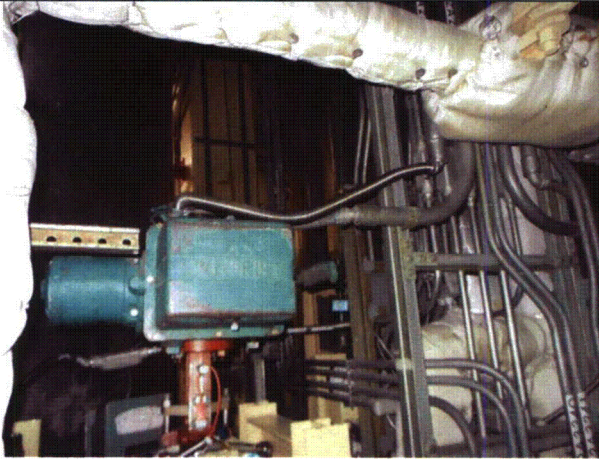
Status: Y N U

Seismic Walkdown Checklist (SWC)

Equipment ID No.: 2MOV508

Equipment Class: (8) Motor-Operated and Solenoid-Operated Valves

Equipment Description: 22 BAST GRAVITY FD



2MOV508 8-6-12 071



2MOV508 8-6-12 072

ATTACHMENT 3

WALKDOWN CHECKLISTS

Status: Y N U

Seismic Walkdown Checklist (SWC)

Equipment ID No.: 2MOV508

Equipment Class: (8) Motor-Operated and Solenoid-Operated Valves

Equipment Description: 22 BAST GRAVITY FD



2MOV508 8-6-12 074

2MOV508 8-6-12 073

ATTACHMENT 3
WALKDOWN CHECKLISTS

Status: Y N U

Seismic Walkdown Checklist (SWC)

Equipment ID No.: 2MOV509

Equipment Class: (8) Motor-Operated and Solenoid-Operated Valves

Equipment Description: 21 BAST GRAVITY FD

Project: CCNPP 2 SWEL

Location (Bldg, Elev, Room/Area): AUX, 5.00 ft, CAL-AB-215

Manufacturer/Model: _____

Instructions for Completing Checklist

This checklist may be used to document the results of the Seismic Walkdown of an item of equipment on the SWEL. The space below each of the following questions may be used to record the results of judgments and findings. Additional space is provided at the end of this checklist for documenting other comments.

Anchorage

1. Is anchorage configuration verification required (i.e., is the item one of the 50% of SWEL items requiring such verification)? No

2. Is the anchorage free of bent, broken, missing or loose hardware? Not Applicable

3. Is the anchorage free of corrosion that is more than mild surface oxidation? Not Applicable

4. Is the anchorage free of visible cracks in the concrete near the anchors? Not Applicable

5. Is the anchorage configuration consistent with plant documentation? (Note: This question only applies if the item is one of the 50% for which an anchorage configuration verification is required.) Not Applicable

6. Based on the above anchorage evaluations, is the anchorage free of potentially adverse seismic conditions? Yes

ATTACHMENT 3
WALKDOWN CHECKLISTS

Status: Y N U

Seismic Walkdown Checklist (SWC)

Equipment ID No.: 2MOV509

Equipment Class: (8) Motor-Operated and Solenoid-Operated Valves

Equipment Description: 21 BAST GRAVITY FD

Interaction Effects

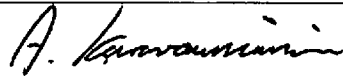
7. Are soft targets free from impact by nearby equipment or structures? Yes
- Operator is in close proximity to pipe, i.e. touching insulation. The pipe is part of valve's piping system, therefore minimal differential motion expected. Judged not a seismic concern.*
- Also, a unistrut frame is touching the top of a horizontal valve component, the condition may cause some scrapping, but judged not a seismic concern.*
8. Are overhead equipment, distribution systems, ceiling tiles and lighting, and masonry block walls not likely to collapse onto the equipment? Yes
9. Do attached lines have adequate flexibility to avoid damage? Yes
10. Based on the above seismic interaction evaluations, is equipment free of potentially adverse seismic interaction effects? Yes
-

Other Adverse Conditions

11. Have you looked for and found no adverse seismic conditions that could adversely affect the safety functions of the equipment? Yes
-

Comments

Evaluated by:



A. Karavoussianis

Date: 11/09/2012



C. Figliolini

11/09/2012

Photos

ATTACHMENT 3

WALKDOWN CHECKLISTS

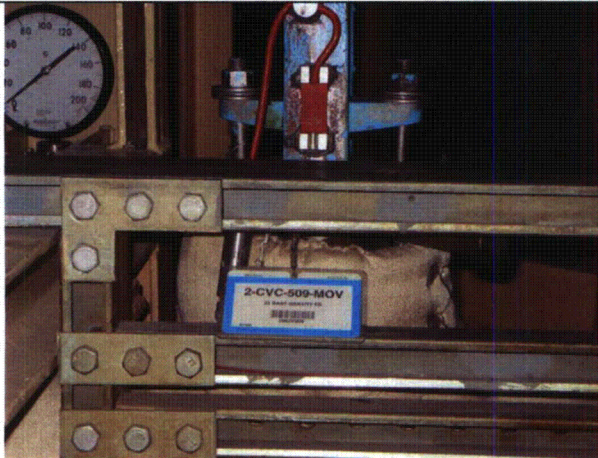
Status: Y N U

Seismic Walkdown Checklist (SWC)

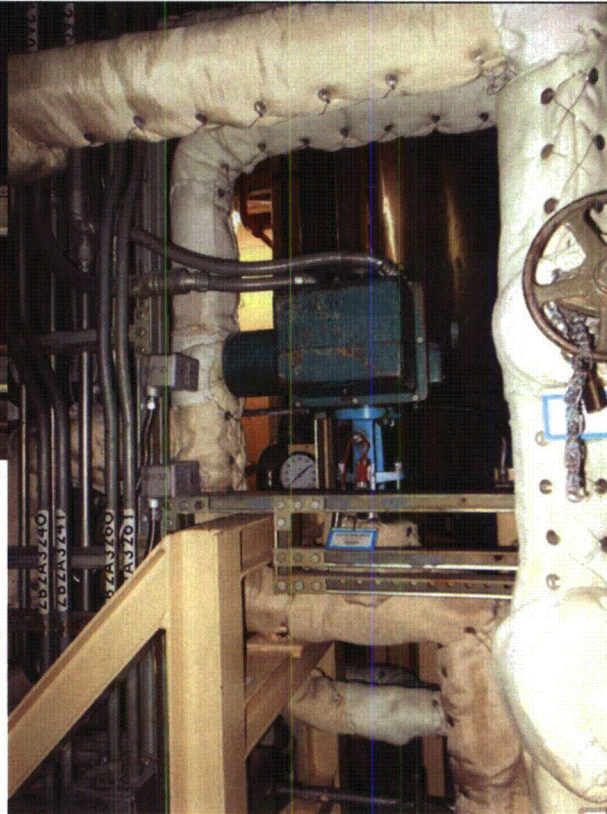
Equipment ID No.: 2MOV509

Equipment Class: (8) Motor-Operated and Solenoid-Operated Valves

Equipment Description: 21 BAST GRAVITY FD



2MOV509 8-6-12 075



2MOV509 8-6-12 076

ATTACHMENT 3
WALKDOWN CHECKLISTS

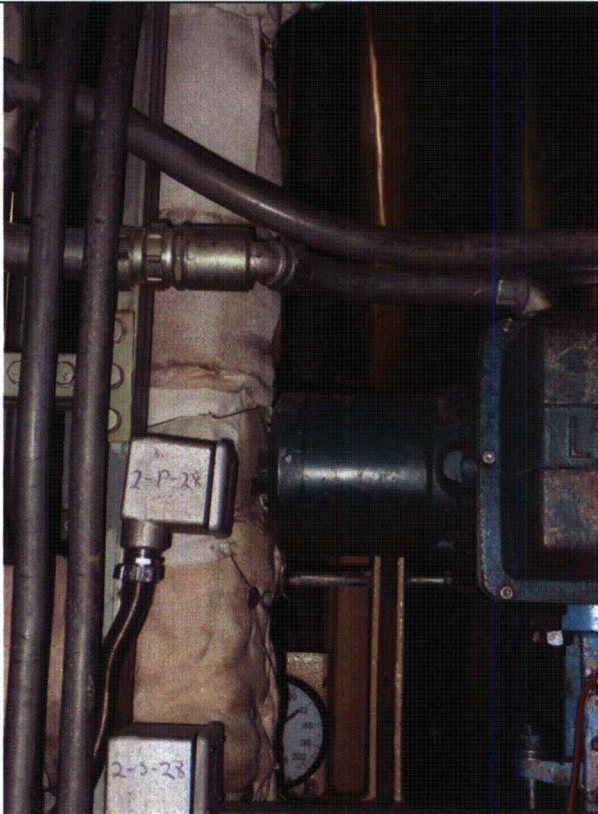
Status: Y N U

Seismic Walkdown Checklist (SWC)

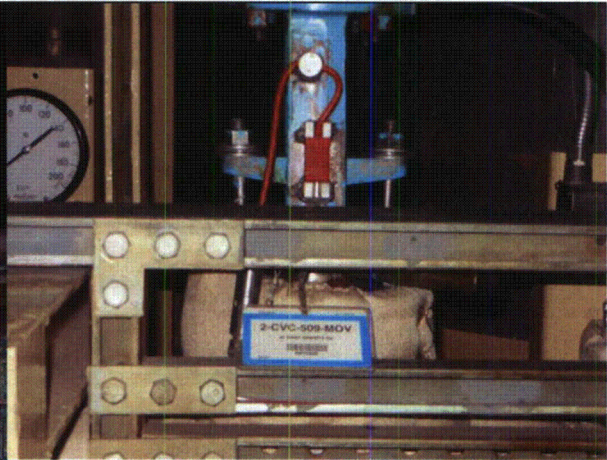
Equipment ID No.: 2MOV509

Equipment Class: (8) Motor-Operated and Solenoid-Operated Valves

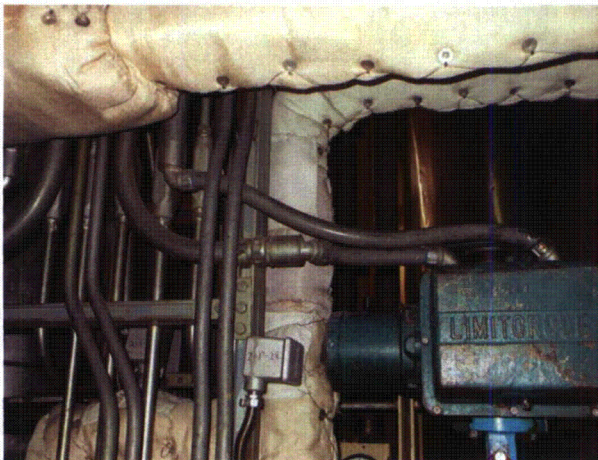
Equipment Description: 21 BAST GRAVITY FD



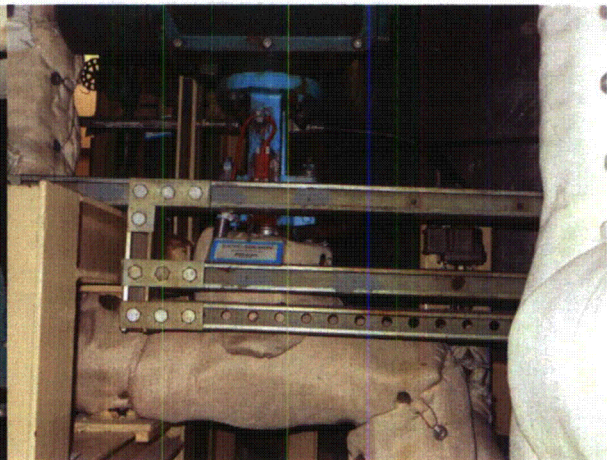
2MOV509 8-6-12 077



2MOV509 8-6-12 078



2MOV509 8-6-12 079



2MOV509 8-6-12 080

ATTACHMENT 3
WALKDOWN CHECKLISTS

Status: Y N U

Seismic Walkdown Checklist (SWC)

Equipment ID No.: 2MOV514

Equipment Class: (8) Motor-Operated and Solenoid-Operated Valves

Equipment Description: BAPP'S TO CHG PP SUCT DIR

Project: CCNPP 2 SWEL

Location (Bldg, Elev, Room/Area): AUX, 5.00 ft, CAL-AB-215

Manufacturer/Model: _____

Instructions for Completing Checklist

This checklist may be used to document the results of the Seismic Walkdown of an item of equipment on the SWEL. The space below each of the following questions may be used to record the results of judgments and findings. Additional space is provided at the end of this checklist for documenting other comments.

Anchorage

1. Is anchorage configuration verification required (i.e., is the item one of the 50% of SWEL items requiring such verification)? No

2. Is the anchorage free of bent, broken, missing or loose hardware? Not Applicable

3. Is the anchorage free of corrosion that is more than mild surface oxidation? Not Applicable

4. Is the anchorage free of visible cracks in the concrete near the anchors? Not Applicable

5. Is the anchorage configuration consistent with plant documentation? (Note: This question only applies if the item is one of the 50% for which an anchorage configuration verification is required.) Not Applicable

6. Based on the above anchorage evaluations, is the anchorage free of potentially adverse seismic conditions? Yes

ATTACHMENT 3
WALKDOWN CHECKLISTS

Status: Y N U

Seismic Walkdown Checklist (SWC)

Equipment ID No.: 2MOV514

Equipment Class: (8) Motor-Operated and Solenoid-Operated Valves

Equipment Description: BAPP'S TO CHG PP SUCT DIR

Interaction Effects

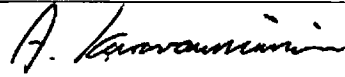
7. Are soft targets free from impact by nearby equipment or structures? Yes
8. Are overhead equipment, distribution systems, ceiling tiles and lighting, and masonry block walls not likely to collapse onto the equipment? Yes
9. Do attached lines have adequate flexibility to avoid damage? Yes
10. Based on the above seismic interaction evaluations, is equipment free of potentially adverse seismic interaction effects? Yes
-

Other Adverse Conditions

11. Have you looked for and found no adverse seismic conditions that could adversely affect the safety functions of the equipment? Yes
The pipe is laterally supported near the valve, judged not to be a concern.
-

Comments

Evaluated by:



A. Karavoussianis

Date: 11/09/2012



C. Figliolini

11/09/2012

Photos

ATTACHMENT 3
WALKDOWN CHECKLISTS

Status: Y N U

Seismic Walkdown Checklist (SWC)

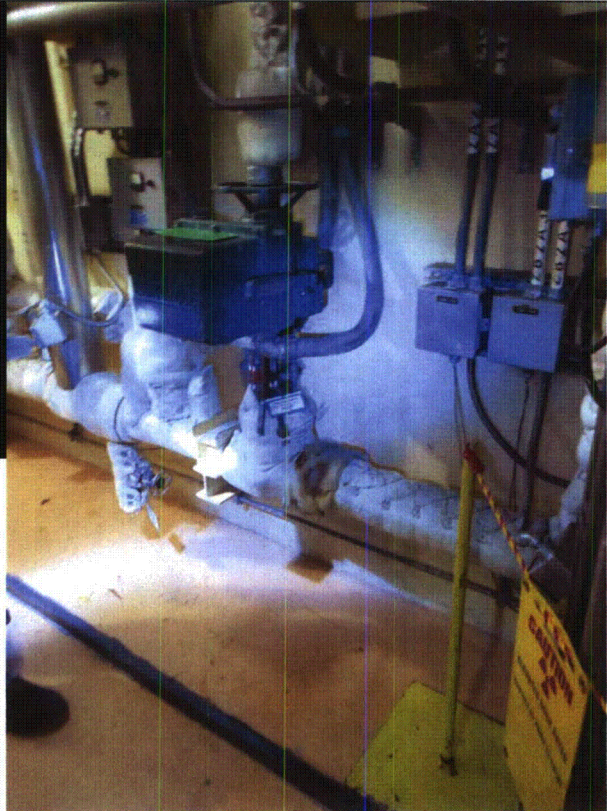
Equipment ID No.: 2MOV514

Equipment Class: (8) Motor-Operated and Solenoid-Operated Valves

Equipment Description: BAPP'S TO CHG PP SUCT DIR



2MOV514 8-6-12 060



2MOV514 8-6-12 061

ATTACHMENT 3

WALKDOWN CHECKLISTS

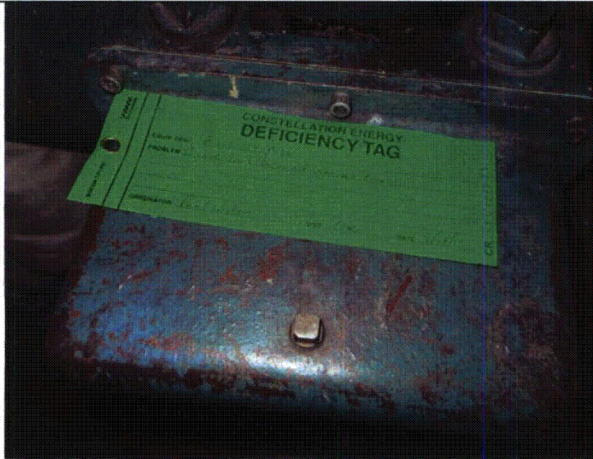
Status: Y N U

Seismic Walkdown Checklist (SWC)

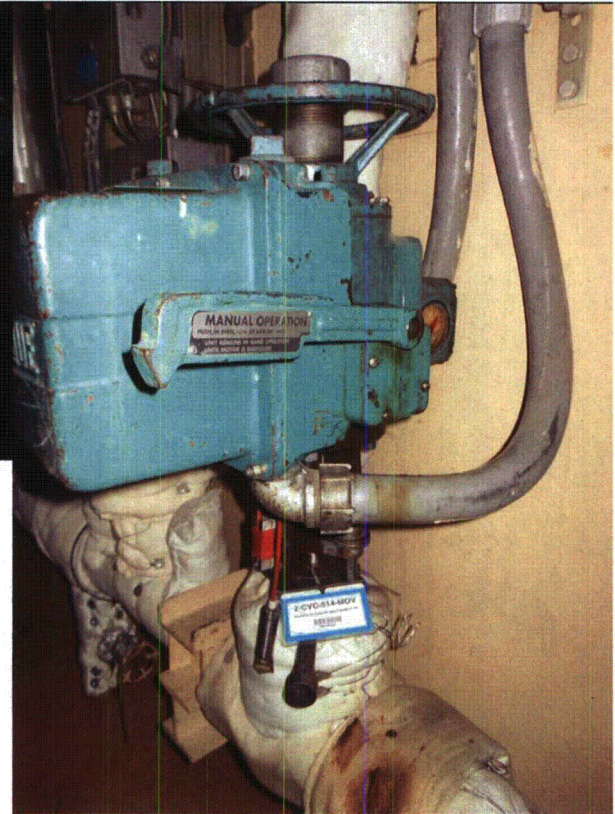
Equipment ID No.: 2MOV514

Equipment Class: (8) Motor-Operated and Solenoid-Operated Valves

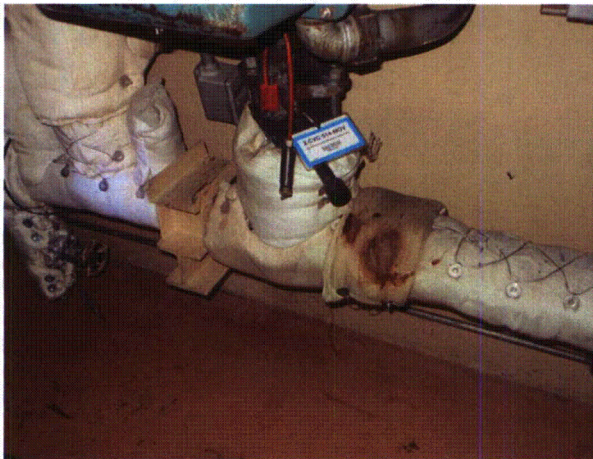
Equipment Description: BAPP'S TO CHG PP SUCT DIR



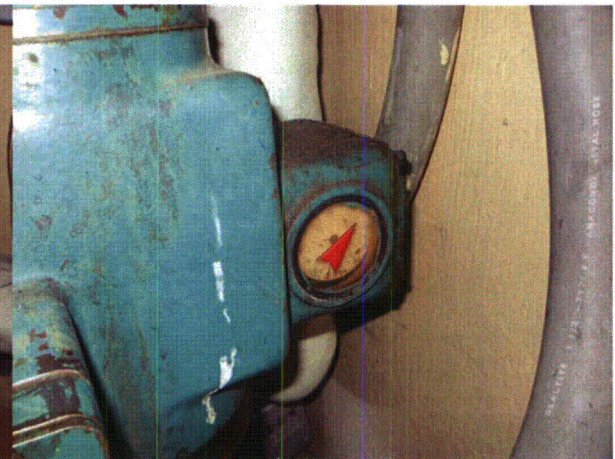
2MOV514 8-6-12 062



2MOV514 8-6-12 063



2MOV514 8-6-12 064



2MOV514 8-6-12 065

ATTACHMENT 3
WALKDOWN CHECKLISTS

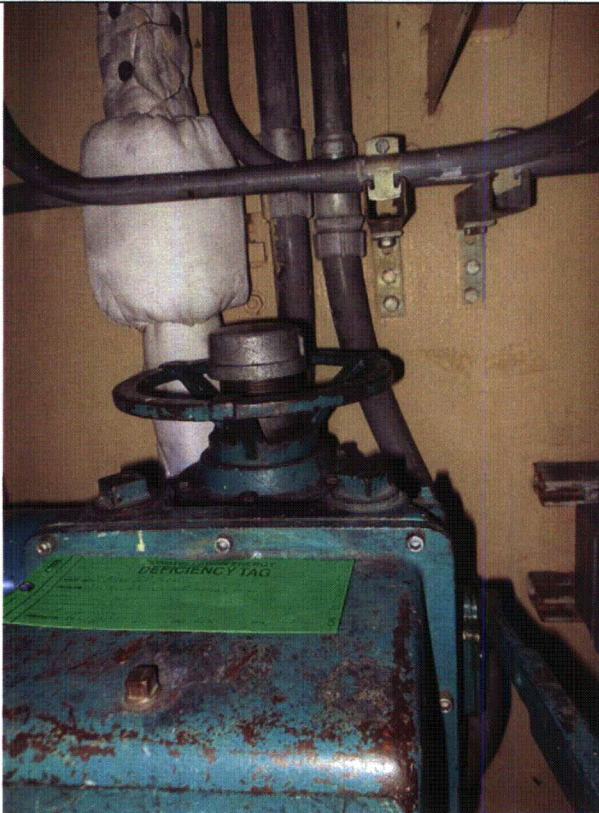
Status: Y N U

Seismic Walkdown Checklist (SWC)

Equipment ID No.: 2MOV514

Equipment Class: (8) Motor-Operated and Solenoid-Operated Valves

Equipment Description: BAPP'S TO CHG PP SUCT DIR



2MOV514 8-6-12 066



2MOV514 8-6-12 067

ATTACHMENT 3
WALKDOWN CHECKLISTS

Status: Y N U

Seismic Walkdown Checklist (SWC)

Equipment ID No.: 2MOV514

Equipment Class: (8) Motor-Operated and Solenoid-Operated Valves

Equipment Description: BAPP'S TO CHG PP SUCT DIR



2MOV514 8-6-12 068

ATTACHMENT 3
WALKDOWN CHECKLISTS

Status: Y N U

Seismic Walkdown Checklist (SWC)

Equipment ID No.: 2MOV615

Equipment Class: (8) Motor-Operated and Solenoid-Operated Valves

Equipment Description: 21B LPSI OUTLET MOV

Project: CCNPP 2 SWEL

Location (Bldg, Elev, Room/Area): AUX, 5.00 ft, CAL-AB-206

Manufacturer/Model: _____

Instructions for Completing Checklist

This checklist may be used to document the results of the Seismic Walkdown of an item of equipment on the SWEL. The space below each of the following questions may be used to record the results of judgments and findings. Additional space is provided at the end of this checklist for documenting other comments.

Anchorage

1. Is anchorage configuration verification required (i.e., is the item one of the 50% of SWEL items requiring such verification)? No

2. Is the anchorage free of bent, broken, missing or loose hardware? Not Applicable

3. Is the anchorage free of corrosion that is more than mild surface oxidation? Not Applicable

4. Is the anchorage free of visible cracks in the concrete near the anchors? Not Applicable

5. Is the anchorage configuration consistent with plant documentation? (Note: This question only applies if the item is one of the 50% for which an anchorage configuration verification is required.) Not Applicable

6. Based on the above anchorage evaluations, is the anchorage free of potentially adverse seismic conditions? Yes

ATTACHMENT 3
WALKDOWN CHECKLISTS

Status: Y N U

Seismic Walkdown Checklist (SWC)

Equipment ID No.: 2MOV615

Equipment Class: (8) Motor-Operated and Solenoid-Operated Valves

Equipment Description: 21B LPSI OUTLET MOV

Interaction Effects

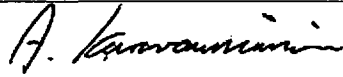
7. Are soft targets free from impact by nearby equipment or structures? Yes
8. Are overhead equipment, distribution systems, ceiling tiles and lighting, and masonry block walls not likely to collapse onto the equipment? Yes
Valve's hand wheel is approximately 1" from flexible hose, judged not a seismic concern.
9. Do attached lines have adequate flexibility to avoid damage? Yes
10. Based on the above seismic interaction evaluations, is equipment free of potentially adverse seismic interaction effects? Yes
-

Other Adverse Conditions

11. Have you looked for and found no adverse seismic conditions that could adversely affect the safety functions of the equipment? Yes
-

Comments

Evaluated by:



A. Karavoussianis

Date: 11/09/2012



C. Figliolini

11/09/2012

Photos

ATTACHMENT 3
WALKDOWN CHECKLISTS

Status: Y N U

Seismic Walkdown Checklist (SWC)

Equipment ID No.: 2MOV615

Equipment Class: (8) Motor-Operated and Solenoid-Operated Valves

Equipment Description: 21B LPSI OUTLET MOV



2MOV615 8-7-12 131



2MOV615 8-7-12 132

ATTACHMENT 3
WALKDOWN CHECKLISTS

Status: Y N U

Seismic Walkdown Checklist (SWC)

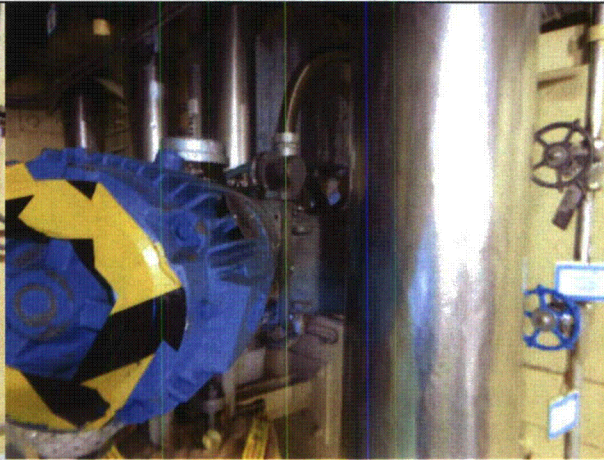
Equipment ID No.: 2MOV615

Equipment Class: (8) Motor-Operated and Solenoid-Operated Valves

Equipment Description: 21B LPSI OUTLET MOV



2MOV615 8-7-12 133



2MOV615 8-7-12 134

ATTACHMENT 3
WALKDOWN CHECKLISTS

Status: Y N U

Seismic Walkdown Checklist (SWC)

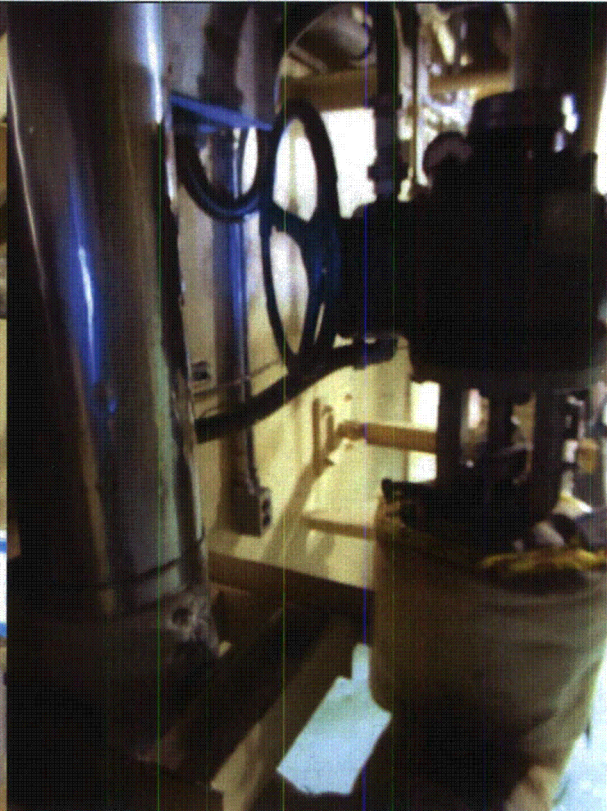
Equipment ID No.: 2MOV615

Equipment Class: (8) Motor-Operated and Solenoid-Operated Valves

Equipment Description: 21B LPSI OUTLET MOV



2MOV615 8-7-12 135



2MOV615 8-7-12 136

ATTACHMENT 3
WALKDOWN CHECKLISTS

Status: Y N U

Seismic Walkdown Checklist (SWC)

Equipment ID No.: 2MOV625

Equipment Class: (8) Motor-Operated and Solenoid-Operated Valves

Equipment Description: 21A LPSI LOOP ISOL

Project: CCNPP 2 SWEL

Location (Bldg, Elev, Room/Area): AUX, 5.00 ft, CAL-AB-206

Manufacturer/Model: _____

Instructions for Completing Checklist

This checklist may be used to document the results of the Seismic Walkdown of an item of equipment on the SWEL. The space below each of the following questions may be used to record the results of judgments and findings. Additional space is provided at the end of this checklist for documenting other comments.

Anchorage

1. Is anchorage configuration verification required (i.e., is the item one of the 50% of SWEL items requiring such verification)? No

2. Is the anchorage free of bent, broken, missing or loose hardware? Not Applicable

3. Is the anchorage free of corrosion that is more than mild surface oxidation? Not Applicable

4. Is the anchorage free of visible cracks in the concrete near the anchors? Not Applicable

5. Is the anchorage configuration consistent with plant documentation? (Note: This question only applies if the item is one of the 50% for which an anchorage configuration verification is required.) Not Applicable

6. Based on the above anchorage evaluations, is the anchorage free of potentially adverse seismic conditions? Yes

ATTACHMENT 3
WALKDOWN CHECKLISTS

Status: Y N U

Seismic Walkdown Checklist (SWC)

Equipment ID No.: 2MOV625

Equipment Class: (8) Motor-Operated and Solenoid-Operated Valves

Equipment Description: 21A LPSI LOOP ISOL

Interaction Effects

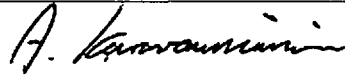
7. Are soft targets free from impact by nearby equipment or structures? Yes
Flexible hose is behind the pipe and in direct contact with the isolation jacket. Piping is restrained from movement by lugs, therefore judged not a seismic concern.
8. Are overhead equipment, distribution systems, ceiling tiles and lighting, and masonry block walls not likely to collapse onto the equipment? Yes
9. Do attached lines have adequate flexibility to avoid damage? Yes
10. Based on the above seismic interaction evaluations, is equipment free of potentially adverse seismic interaction effects? Yes
-

Other Adverse Conditions

11. Have you looked for and found no adverse seismic conditions that could adversely affect the safety functions of the equipment? Yes
-

Comments

Evaluated by:



A. Karavoussianis

Date: 11/09/2012



C. Figliolini

11/09/2012

Photos

ATTACHMENT 3

WALKDOWN CHECKLISTS

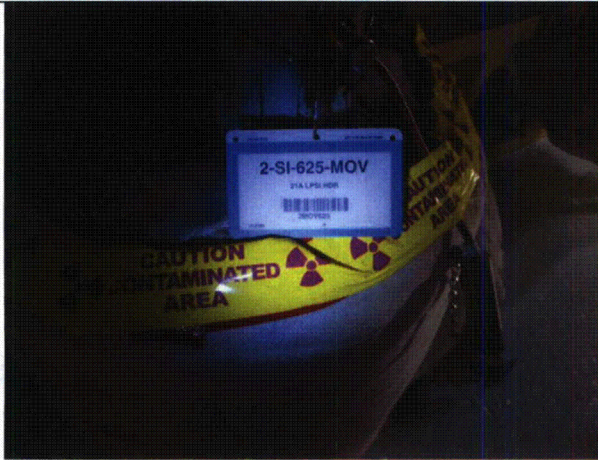
Status: Y N U

Seismic Walkdown Checklist (SWC)

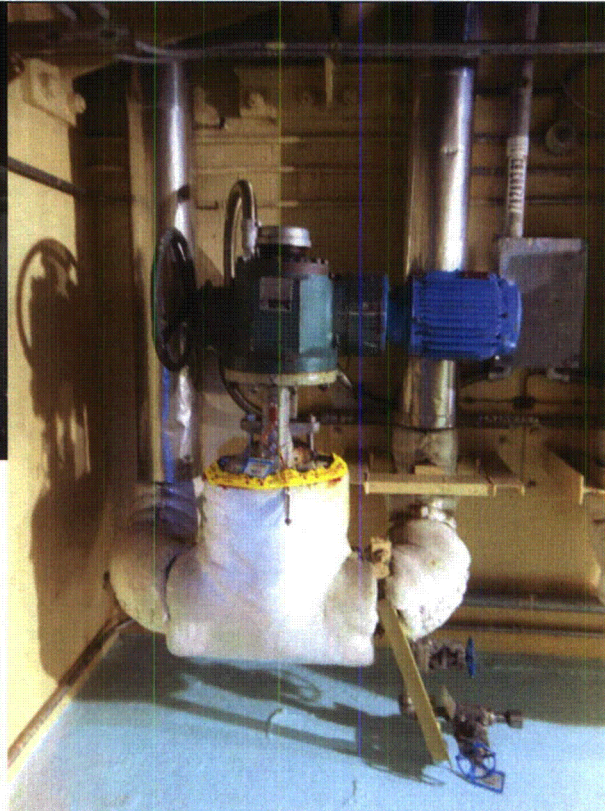
Equipment ID No.: 2MOV625

Equipment Class: (8) Motor-Operated and Solenoid-Operated Valves

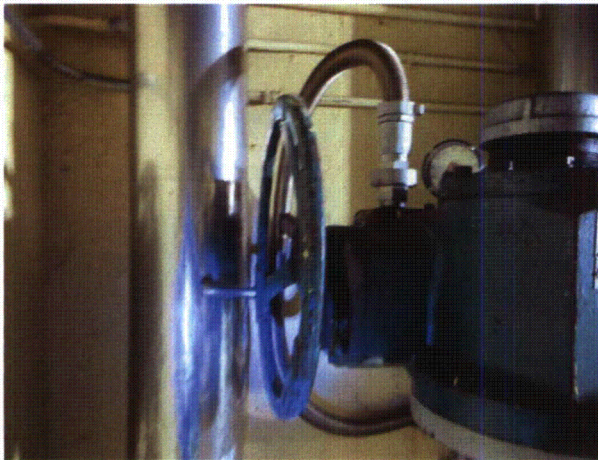
Equipment Description: 21A LPSI LOOP ISOL



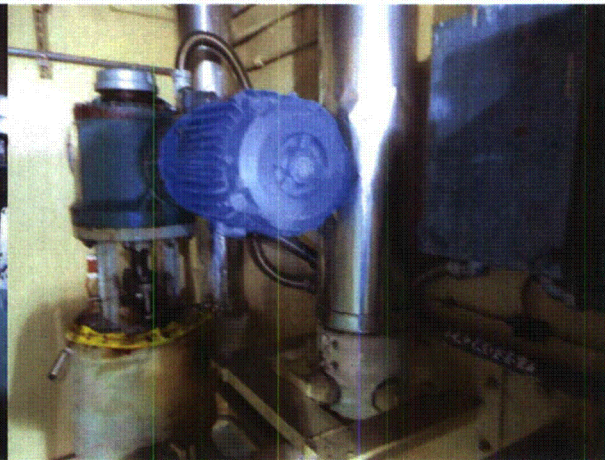
2MOV625 8-7-12 137



2MOV625 8-7-12 139



2MOV625 8-7-12 141



2MOV625 8-7-12 142

ATTACHMENT 3
WALKDOWN CHECKLISTS

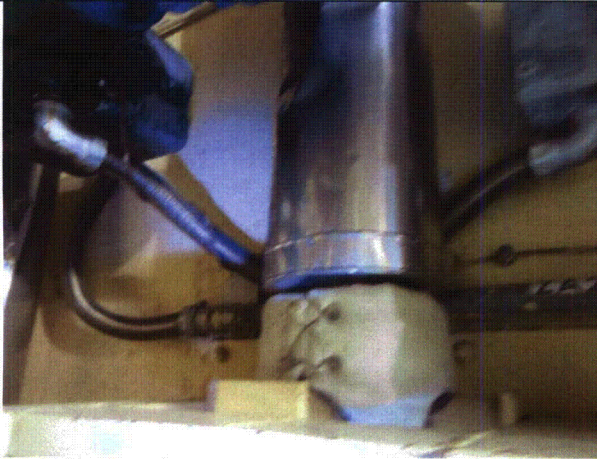
Status: Y N U

Seismic Walkdown Checklist (SWC)

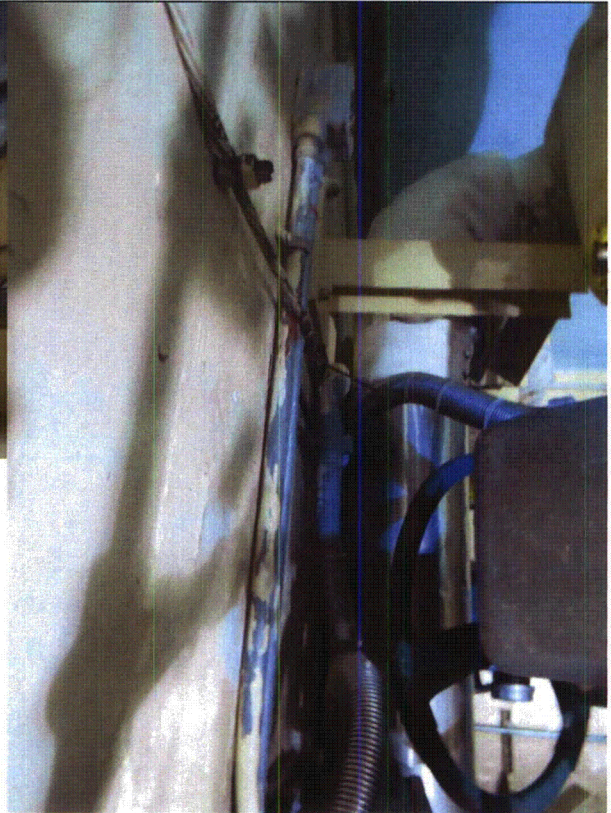
Equipment ID No.: 2MOV625

Equipment Class: (8) Motor-Operated and Solenoid-Operated Valves

Equipment Description: 21A LPSI LOOP ISOL



2MOV625 8-7-12 143



2MOV625 8-7-12 146

ATTACHMENT 3

WALKDOWN CHECKLISTS

Status: Y N U

Seismic Walkdown Checklist (SWC)

Equipment ID No.: 2MOV625

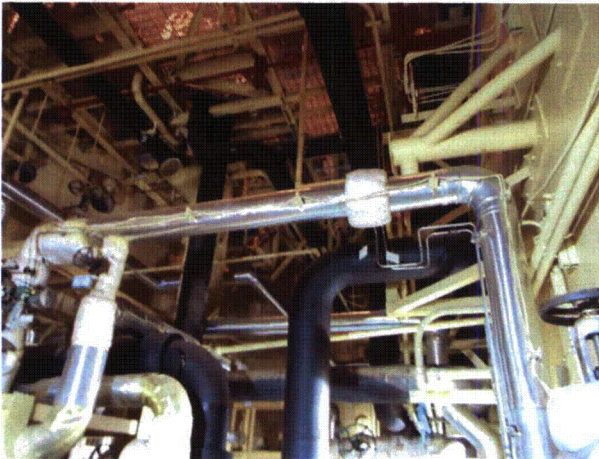
Equipment Class: (8) Motor-Operated and Solenoid-Operated Valves

Equipment Description: 21A LPSI LOOP ISOL



2MOV625 8-7-12 149

2MOV625 8-7-12 150



2MOV625 8-7-12 151

ATTACHMENT 3
WALKDOWN CHECKLISTS

Status: Y N U

Seismic Walkdown Checklist (SWC)

Equipment ID No.: 2MOV627

Equipment Class: (8) Motor-Operated and Solenoid-Operated Valves

Equipment Description: 21A AUX HPSI LOOP ISOL

Project: CCNPP 2 SWEL

Location (Bldg, Elev, Room/Area): AUX, 27.00 ft, CAL-AB-310

Manufacturer/Model: _____

Instructions for Completing Checklist

This checklist may be used to document the results of the Seismic Walkdown of an item of equipment on the SWEL. The space below each of the following questions may be used to record the results of judgments and findings. Additional space is provided at the end of this checklist for documenting other comments.

Anchorage

1. Is anchorage configuration verification required (i.e., is the item one of the 50% of SWEL items requiring such verification)? No

2. Is the anchorage free of bent, broken, missing or loose hardware? Not Applicable

3. Is the anchorage free of corrosion that is more than mild surface oxidation? Not Applicable

4. Is the anchorage free of visible cracks in the concrete near the anchors? Not Applicable

5. Is the anchorage configuration consistent with plant documentation? (Note: This question only applies if the item is one of the 50% for which an anchorage configuration verification is required.) Not Applicable

6. Based on the above anchorage evaluations, is the anchorage free of potentially adverse seismic conditions? Yes

ATTACHMENT 3
WALKDOWN CHECKLISTS

Status: Y N U

Seismic Walkdown Checklist (SWC)

Equipment ID No.: 2MOV627

Equipment Class: (8) Motor-Operated and Solenoid-Operated Valves

Equipment Description: 21A AUX HPSI LOOP ISOL

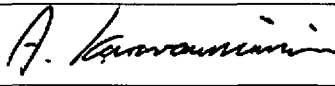
Interaction Effects


7. Are soft targets free from impact by nearby equipment or structures? Yes
8. Are overhead equipment, distribution systems, ceiling tiles and lighting, and masonry block walls not likely to collapse onto the equipment? Yes
Nearby scaffold is adequately braced and does not pose a seismic hazard.
9. Do attached lines have adequate flexibility to avoid damage? Yes
There is flex conduit from the operator connected to rigid conduit that is supported on a nearby frame, judged to have adequate flexibility.
10. Based on the above seismic interaction evaluations, is equipment free of potentially adverse seismic interaction effects? Yes
-

Other Adverse Conditions

11. Have you looked for and found no adverse seismic conditions that could adversely affect the safety functions of the equipment? Yes
-

Comments

Evaluated by:  A. Karavoussianis Date: 11/09/2012

 11/09/2012

Photos

ATTACHMENT 3
WALKDOWN CHECKLISTS

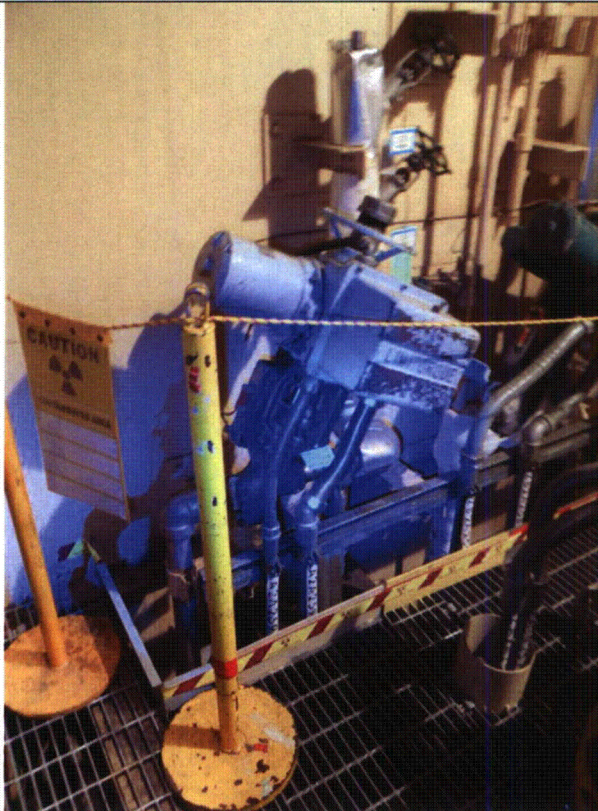
Status: Y N U

Seismic Walkdown Checklist (SWC)

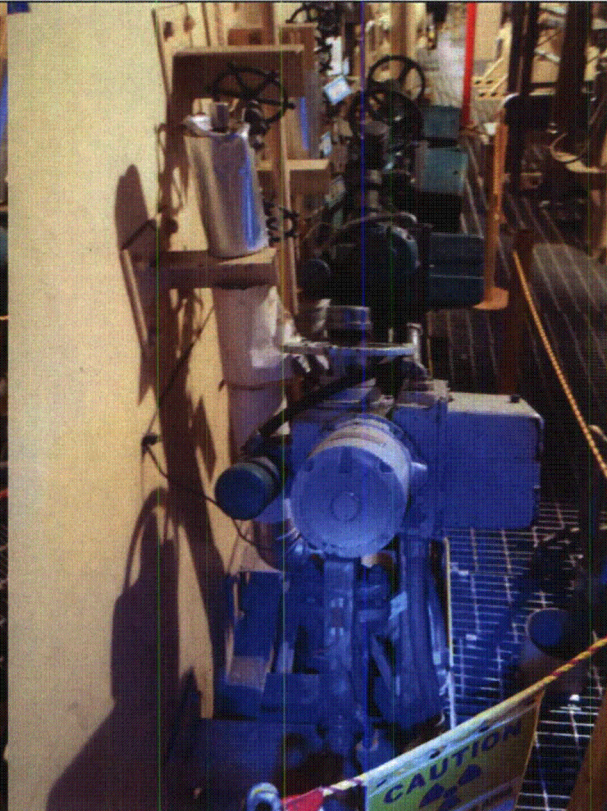
Equipment ID No.: 2MOV627

Equipment Class: (8) Motor-Operated and Solenoid-Operated Valves

Equipment Description: 21A AUX HPSI LOOP ISOL



2MOV627 8-9-12 066



2MOV627 8-9-12 067

ATTACHMENT 3
WALKDOWN CHECKLISTS

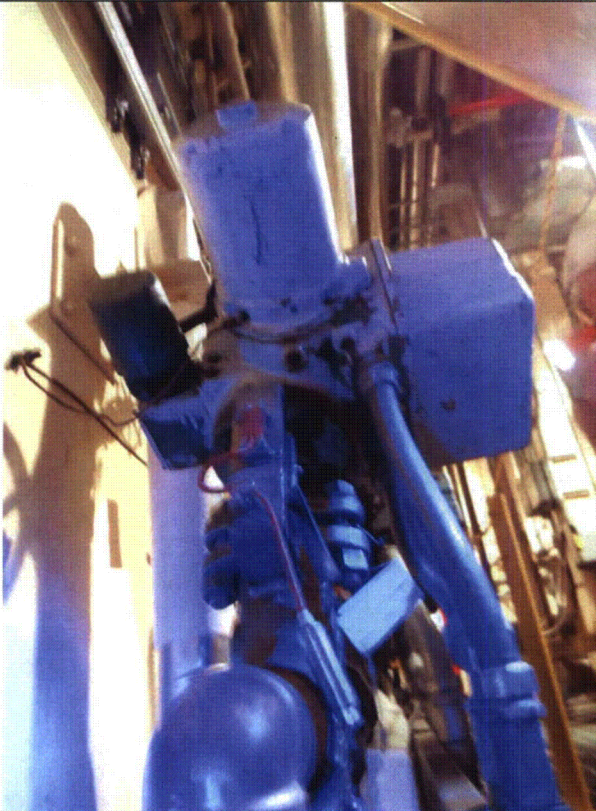
Status: Y N U

Seismic Walkdown Checklist (SWC)

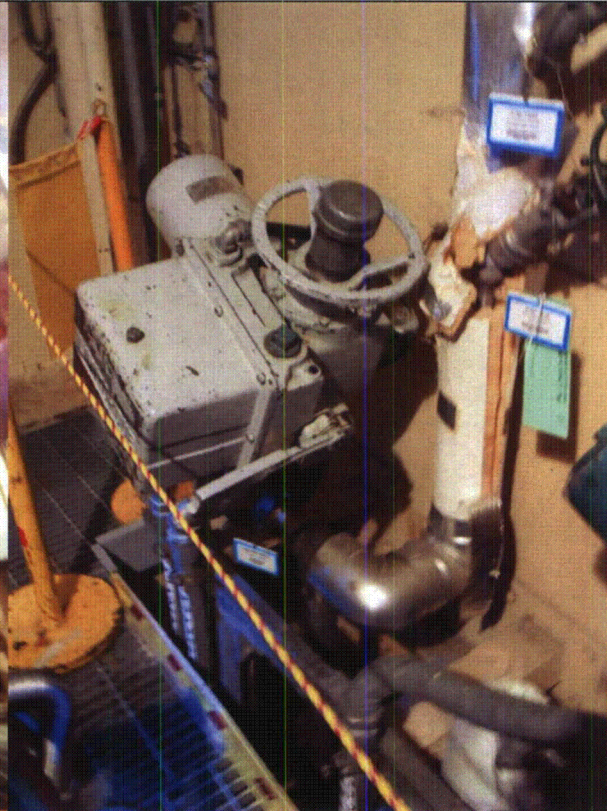
Equipment ID No.: 2MOV627

Equipment Class: (8) Motor-Operated and Solenoid-Operated Valves

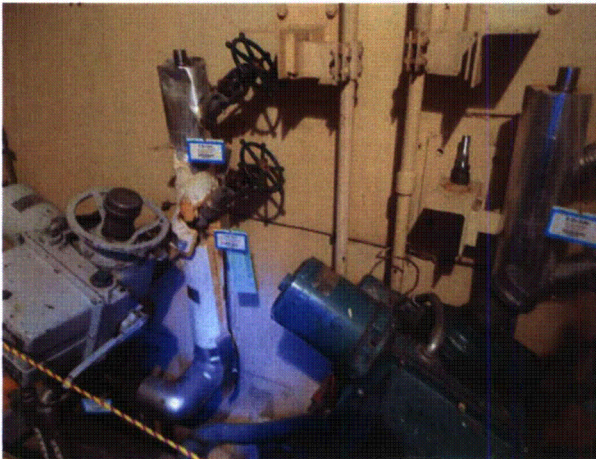
Equipment Description: 21A AUX HPSI LOOP ISOL



2MOV627 8-9-12 068



2MOV627 8-9-12 069



2MOV627 8-9-12 070

ATTACHMENT 3
WALKDOWN CHECKLISTS

Status: Y N U

Seismic Walkdown Checklist (SWC)

Equipment ID No.: 2NB102

Equipment Class: (20) Instrumentation and Control Panels and Cabinets

Equipment Description: CNTMT COOL FAN 21 CONTROLLER

Project: CCNPP 2 SWEL

Location (Bldg, Elev, Room/Area): AUX, 45.00 ft, CAL-AB-409

Manufacturer/Model: _____

Instructions for Completing Checklist

This checklist may be used to document the results of the Seismic Walkdown of an item of equipment on the SWEL. The space below each of the following questions may be used to record the results of judgments and findings. Additional space is provided at the end of this checklist for documenting other comments.

Anchorage

- | | |
|--|----------------|
| 1. Is anchorage configuration verification required (i.e., is the item one of the 50% of SWEL items requiring such verification)? | No |
| 2. Is the anchorage free of bent, broken, missing or loose hardware? | Yes |
| 3. Is the anchorage free of corrosion that is more than mild surface oxidation? | Yes |
| 4. Is the anchorage free of visible cracks in the concrete near the anchors? | Yes |
| 5. Is the anchorage configuration consistent with plant documentation? (Note: This question only applies if the item is one of the 50% for which an anchorage configuration verification is required.) | Not Applicable |
| 6. Based on the above anchorage evaluations, is the anchorage free of potentially adverse seismic conditions? | Yes |

ATTACHMENT 3
WALKDOWN CHECKLISTS

Status: Y N U

Seismic Walkdown Checklist (SWC)

Equipment ID No.: 2NB102

Equipment Class: (20) Instrumentation and Control Panels and Cabinets

Equipment Description: CNTMT COOL FAN 21 CONTROLLER

Interaction Effects

7. Are soft targets free from impact by nearby equipment or structures? Yes

There is less than a 1/8" gap to concrete wall.

Evaluated using 8 Hz frequency for cabinets

2% Damping Ratio, 1.5 PF

Response Spectrum AB045D2N.dat

A=0.30g

*D = (1.5 * 0.30 * 386) / (8 * 2 * 3.14)^2 = 0.07" < 1/8" OK*

8. Are overhead equipment, distribution systems, ceiling tiles and lighting, and masonry block walls not likely to collapse onto the equipment? Yes

9. Do attached lines have adequate flexibility to avoid damage? Yes

10. Based on the above seismic interaction evaluations, is equipment free of potentially adverse seismic interaction effects? Yes


Other Adverse Conditions

11. Have you looked for and found no adverse seismic conditions that could adversely affect the safety functions of the equipment? No

Cabinet is inaccessible for internal inspection.

Comments

Evaluated by:  A. Karavoussianis Date: 11/09/2012

 C. Figliolini 11/09/2012

ATTACHMENT 3
WALKDOWN CHECKLISTS

Status: Y N U

Seismic Walkdown Checklist (SWC)

Equipment ID No.: 2NB102

Equipment Class: (20) Instrumentation and Control Panels and Cabinets

Equipment Description: CNTMT COOL FAN 21 CONTROLLER

Photos



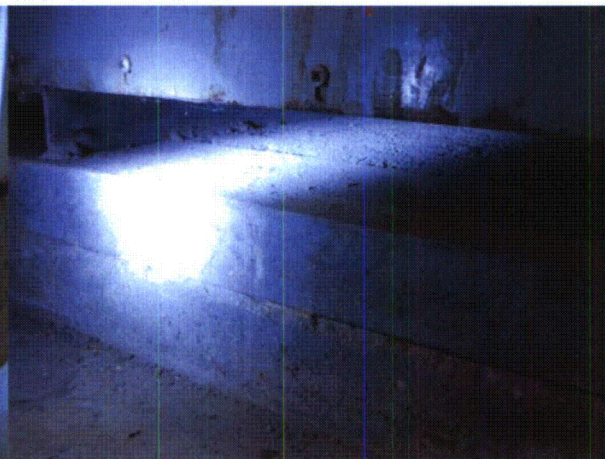
2NB102 8-7-12 025



2NB102 8-7-12 026



2NB102 8-7-12 027



2NB102 8-7-12 028

ATTACHMENT 3
WALKDOWN CHECKLISTS

Status: Y N U

Seismic Walkdown Checklist (SWC)

Equipment ID No.: 2NB102

Equipment Class: (20) Instrumentation and Control Panels and Cabinets

Equipment Description: CNTMT COOL FAN 21 CONTROLLER



2NB102 8-7-12 029

ATTACHMENT 3
WALKDOWN CHECKLISTS

Status: Y N U

Seismic Walkdown Checklist (SWC)

Equipment ID No.: 2PCV3938A

Equipment Class: (0) Other

Equipment Description: 2I/P3938 IA SUPPLY

Project: CCNPP 2 SWEL

Location (Bldg, Elev, Room/Area): AUX, 45.00 ft, CAL-AB-408

Manufacturer/Model: _____

Instructions for Completing Checklist

This checklist may be used to document the results of the Seismic Walkdown of an item of equipment on the SWEL. The space below each of the following questions may be used to record the results of judgments and findings. Additional space is provided at the end of this checklist for documenting other comments.

Anchorage

1. Is anchorage configuration verification required (i.e., is the item one of the 50% of SWEL items requiring such verification)? No
Device is mounted the same as PCV3939A.

2. Is the anchorage free of bent, broken, missing or loose hardware? Yes

3. Is the anchorage free of corrosion that is more than mild surface oxidation? Yes

4. Is the anchorage free of visible cracks in the concrete near the anchors? Yes

5. Is the anchorage configuration consistent with plant documentation? (Note: This question only applies if the item is one of the 50% for which an anchorage configuration verification is required.) Not Applicable

6. Based on the above anchorage evaluations, is the anchorage free of potentially adverse seismic conditions? Yes
Mounted same as PCV3939A

ATTACHMENT 3
WALKDOWN CHECKLISTS

Status: Y N U

Seismic Walkdown Checklist (SWC)

Equipment ID No.: 2PCV3938A

Equipment Class: (0) Other

Equipment Description: 2I/P3938 IA SUPPLY

Interaction Effects

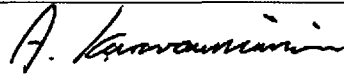
7. Are soft targets free from impact by nearby equipment or structures? Yes
8. Are overhead equipment, distribution systems, ceiling tiles and lighting, and masonry block walls not likely to collapse onto the equipment? Yes
9. Do attached lines have adequate flexibility to avoid damage? Yes
Tubing and flex conduit are mounted on the same wall that supports the PCV.
10. Based on the above seismic interaction evaluations, is equipment free of potentially adverse seismic interaction effects? Yes
-

Other Adverse Conditions

11. Have you looked for and found no adverse seismic conditions that could adversely affect the safety functions of the equipment? Yes
-

Comments

Evaluated by:



A. Karavoussianis

Date: 11/09/2012



C. Figliolini

11/09/2012

Photos

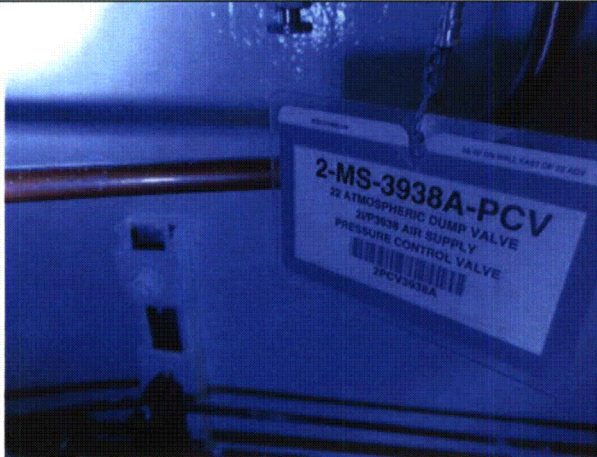
ATTACHMENT 3

WALKDOWN CHECKLISTS

Status: Y N U

Seismic Walkdown Checklist (SWC)

Equipment ID No.: 2PCV3938A
Equipment Class: (0) Other
Equipment Description: 2I/P3938 IA SUPPLY



2PCV3938A 8-8-12 135



2PCV3938A 8-8-12 136

ATTACHMENT 3
WALKDOWN CHECKLISTS

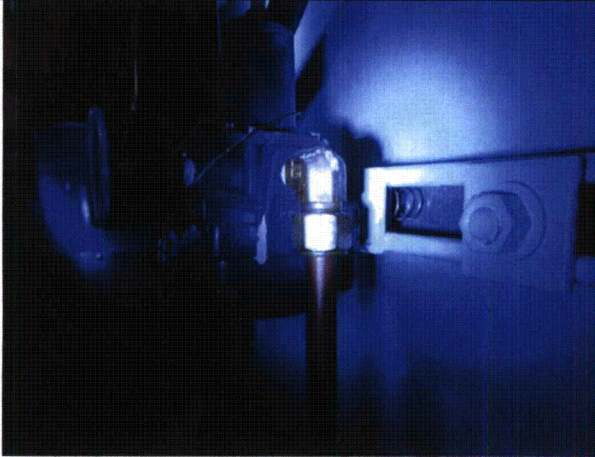
Status: Y N U

Seismic Walkdown Checklist (SWC)

Equipment ID No.: 2PCV3938A

Equipment Class: (0) Other

Equipment Description: 2I/P3938 IA SUPPLY



2PCV3938A 8-8-12 137



2PCV3938A 8-8-12 139

ATTACHMENT 3
WALKDOWN CHECKLISTS

Status: Y N U

Seismic Walkdown Checklist (SWC)

Equipment ID No.: 2PCV3939A

Equipment Class: (0) Other

Equipment Description: 2I/P3939 IA SUPPLY

Project: CCNPP 2 SWEL

Location (Bldg, Elev, Room/Area): AUX, 45.00 ft, CAL-AB-408

Manufacturer/Model: _____

Instructions for Completing Checklist

This checklist may be used to document the results of the Seismic Walkdown of an item of equipment on the SWEL. The space below each of the following questions may be used to record the results of judgments and findings. Additional space is provided at the end of this checklist for documenting other comments.

Anchorage

- | | |
|---|-----|
| 1. Is anchorage configuration verification required (i.e., is the item one of the 50% of SWEL items requiring such verification)? | Yes |
| 2. Is the anchorage free of bent, broken, missing or loose hardware? | Yes |
| 3. Is the anchorage free of corrosion that is more than mild surface oxidation? | Yes |
| 4. Is the anchorage free of visible cracks in the concrete near the anchors? | Yes |
| 5. Is the anchorage configuration consistent with plant documentation? (Note: This question only applies if the item is one of the 50% for which an anchorage configuration verification is required.)
<i>PCV is bolted to unistrut by 2-7/16 F-F bolts head (i.e. 3/8" bolt). Unistrut mounted to wall by 2-1/2" CEA.
Need plant documentation to determine if anchorage is consistent with as-built sketch. CR-2012-009779</i> | No |
| 6. Based on the above anchorage evaluations, is the anchorage free of potentially adverse seismic conditions? | No |
-

ATTACHMENT 3
WALKDOWN CHECKLISTS

Status: Y N U

Seismic Walkdown Checklist (SWC)

Equipment ID No.: 2PCV3939A

Equipment Class: (0) Other

Equipment Description: 2I/P3939 IA SUPPLY

Need plant documentation to determine if anchorage is consistent with as-built sketch.

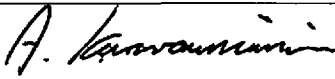
Interaction Effects


7. Are soft targets free from impact by nearby equipment or structures? Yes
8. Are overhead equipment, distribution systems, ceiling tiles and lighting, and masonry block walls not likely to collapse onto the equipment? Yes
9. Do attached lines have adequate flexibility to avoid damage? Yes
All tubing and flex conduit are mounted on same wall.
10. Based on the above seismic interaction evaluations, is equipment free of potentially adverse seismic interaction effects? Yes
-

Other Adverse Conditions

11. Have you looked for and found no adverse seismic conditions that could adversely affect the safety functions of the equipment? Yes
-

Comments

Evaluated by:  A. Karavoussianis Date: 11/09/2012

 C. Figliolini 11/09/2012

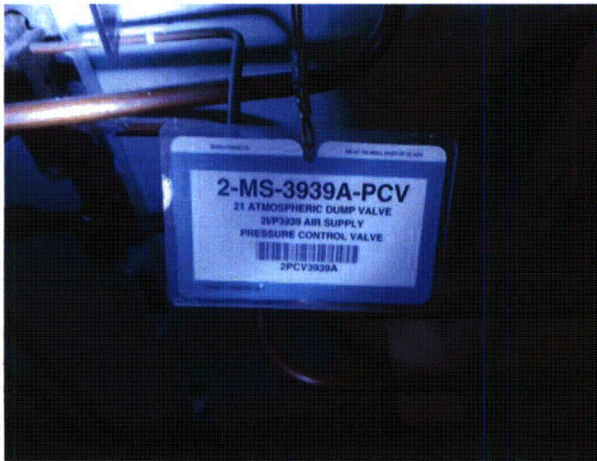
ATTACHMENT 3
WALKDOWN CHECKLISTS

Status: Y N U

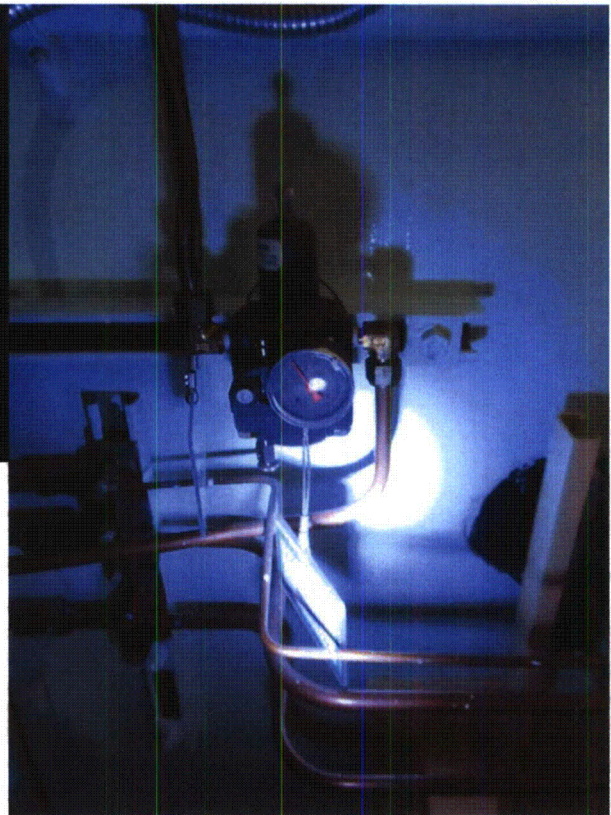
Seismic Walkdown Checklist (SWC)

Equipment ID No.: 2PCV3939A
Equipment Class: (0) Other
Equipment Description: 2I/P3939 IA SUPPLY

Photos



2PCV3939A 8-8-12 124



2PCV3939A 8-8-12 125

ATTACHMENT 3
WALKDOWN CHECKLISTS

Status: Y N U

Seismic Walkdown Checklist (SWC)

Equipment ID No.: 2PCV3939A

Equipment Class: (0) Other

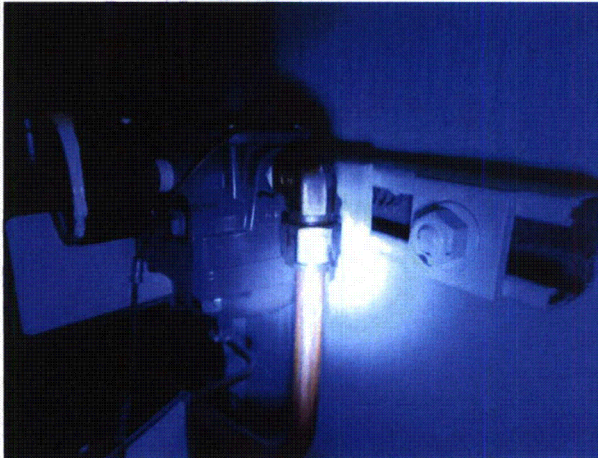
Equipment Description: 2I/P3939 IA SUPPLY



2PCV3939A 8-8-12 126



2PCV3939A 8-8-12 127



2PCV3939A 8-8-12 128

ATTACHMENT 3
WALKDOWN CHECKLISTS

Status: Y N U

Seismic Walkdown Checklist (SWC)

Equipment ID No.: 2PCV3939B

Equipment Class: (0) Other

Equipment Description: 2CV3939 VLV POS SUPPLY

Project: CCNPP 2 SWEL

Location (Bldg, Elev, Room/Area): AUX, 45.00 ft, CAL-AB-408

Manufacturer/Model: _____

Instructions for Completing Checklist

This checklist may be used to document the results of the Seismic Walkdown of an item of equipment on the SWEL. The space below each of the following questions may be used to record the results of judgments and findings. Additional space is provided at the end of this checklist for documenting other comments.

Anchorage

1. Is anchorage configuration verification required (i.e., is the item one of the 50% of SWEL items requiring such verification)? No

2. Is the anchorage free of bent, broken, missing or loose hardware? Yes

3. Is the anchorage free of corrosion that is more than mild surface oxidation? Yes

4. Is the anchorage free of visible cracks in the concrete near the anchors? Not Applicable

5. Is the anchorage configuration consistent with plant documentation? (Note: This question only applies if the item is one of the 50% for which an anchorage configuration verification is required.) Not Applicable

6. Based on the above anchorage evaluations, is the anchorage free of potentially adverse seismic conditions? Yes
Device is mounted to unistrut by 2-7/16 F-F bolts head and the unistrut stitch-welded to steel pipe support.

ATTACHMENT 3
WALKDOWN CHECKLISTS

Status: Y N U

Seismic Walkdown Checklist (SWC)

Equipment ID No.: 2PCV3939B

Equipment Class: (0) Other

Equipment Description: 2CV3939 VLV POS SUPPLY

Interaction Effects

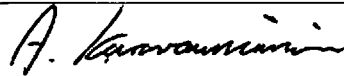
7. Are soft targets free from impact by nearby equipment or structures? Yes
8. Are overhead equipment, distribution systems, ceiling tiles and lighting, and masonry block walls not likely to collapse onto the equipment? Yes
9. Do attached lines have adequate flexibility to avoid damage? Yes
There is a 1/2" tube that spans 25" between pipe support and wall mounted support. Judged that the tube has adequate flexibility, therefore not a concern.
10. Based on the above seismic interaction evaluations, is equipment free of potentially adverse seismic interaction effects? Yes
-

Other Adverse Conditions

11. Have you looked for and found no adverse seismic conditions that could adversely affect the safety functions of the equipment? Yes
-

Comments

Evaluated by:



A. Karavoussianis

Date: 11/09/2012



C. Figliolini

11/09/2012

Photos

ATTACHMENT 3
WALKDOWN CHECKLISTS

Status: Y N U

Seismic Walkdown Checklist (SWC)

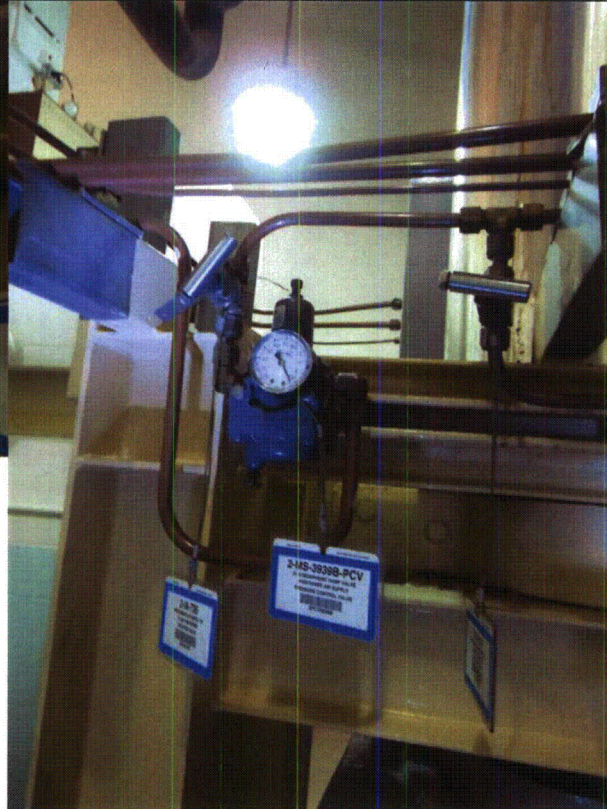
Equipment ID No.: 2PCV3939B

Equipment Class: (0) Other

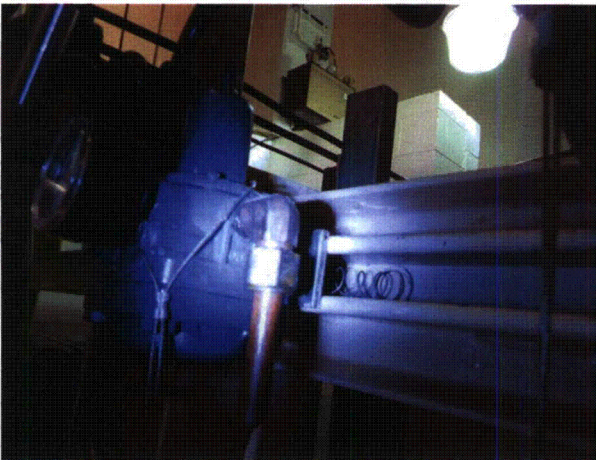
Equipment Description: 2CV3939 VLV POS SUPPLY



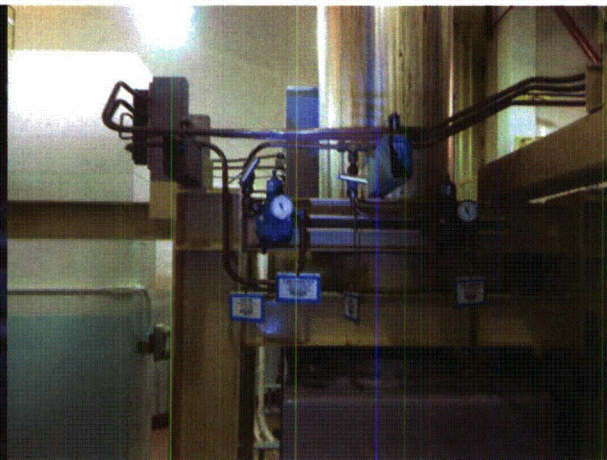
2PCV3939B 8-8-12 140



2PCV3939B 8-8-12 141



2PCV3939B 8-8-12 142



2PCV3939B 8-8-12 143

ATTACHMENT 3

WALKDOWN CHECKLISTS

Status: Y N U

Seismic Walkdown Checklist (SWC)

Equipment ID No.: 2PNL2C08

Equipment Class: (20) Instrumentation and Control Panels and Cabinets

Equipment Description: ENGINEERING SAFEGUARDS CONTROL

Project: CCNPP 2 SWEL

Location (Bldg, Elev, Room/Area): AUX, 45.00 ft, CAL-AB-405

Manufacturer/Model: _____

Instructions for Completing Checklist

This checklist may be used to document the results of the Seismic Walkdown of an item of equipment on the SWEL. The space below each of the following questions may be used to record the results of judgments and findings. Additional space is provided at the end of this checklist for documenting other comments.

Anchorage

1. Is anchorage configuration verification required (i.e., is the item one of the 50% of SWEL items requiring such verification)? Yes

2. Is the anchorage free of bent, broken, missing or loose hardware? Yes

3. Is the anchorage free of corrosion that is more than mild surface oxidation? Yes

4. Is the anchorage free of visible cracks in the concrete near the anchors? Yes

5. Is the anchorage configuration consistent with plant documentation? (Note: This question only applies if the item is one of the 50% for which an anchorage configuration verification is required.) No
Anchorage used details that are not shown on the drawing, but are judged to be equivalent. See as-built on drawing G1992 SH0004 Rev. 9. CR-2012-9752

6. Based on the above anchorage evaluations, is the anchorage free of potentially adverse seismic conditions? Yes
The anchorage detail deviations do not adversely affect the cabinet's anchorage, therefore there is no potential seismic concern. This is simple a documentation issue.

ATTACHMENT 3
WALKDOWN CHECKLISTS

Status: Y N U

Seismic Walkdown Checklist (SWC)

Equipment ID No.: 2PNL2C08

Equipment Class: (20) Instrumentation and Control Panels and Cabinets

Equipment Description: ENGINEERING SAFEGUARDS CONTROL

Interaction Effects

7. Are soft targets free from impact by nearby equipment or structures? Yes
8. Are overhead equipment, distribution systems, ceiling tiles and lighting, and masonry block walls not likely to collapse onto the equipment? Yes
Observed a drop ceiling and light diffuser ceiling.
10/3/12 - The control room ceiling has been previously evaluated by CCNPP and was determined to not be a credible seismic concern.

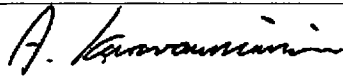
Observed a masonry block wall behind the panels. The block wall, identified as AA on drawing A-259, is safety-related and thus seismically rated per IE Bulletin 80-11.
9. Do attached lines have adequate flexibility to avoid damage? Yes
10. Based on the above seismic interaction evaluations, is equipment free of potentially adverse seismic interaction effects? Yes
-

Other Adverse Conditions

11. Have you looked for and found no adverse seismic conditions that could adversely affect the safety functions of the equipment? Yes
-

Comments

Evaluated by:



A. Karavoussianis

Date: 11/09/2012



C. Figliolini

11/09/2012

ATTACHMENT 3

WALKDOWN CHECKLISTS

Status: Y N U

Seismic Walkdown Checklist (SWC)

Equipment ID No.: 2PNL2C08

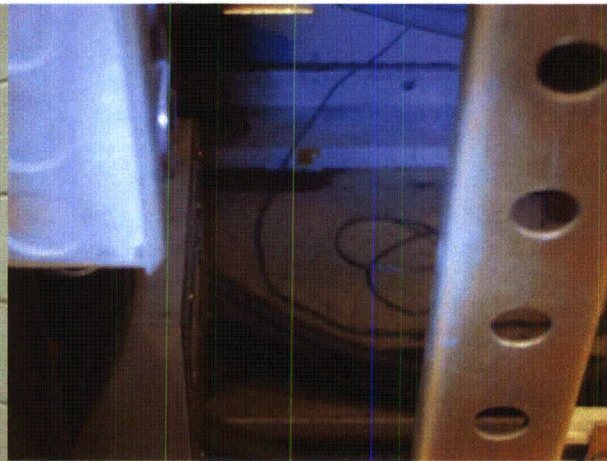
Equipment Class: (20) Instrumentation and Control Panels and Cabinets

Equipment Description: ENGINEERING SAFEGUARDS CONTROL

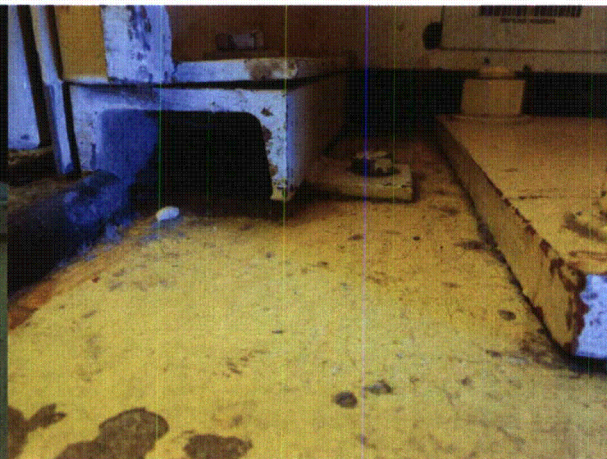
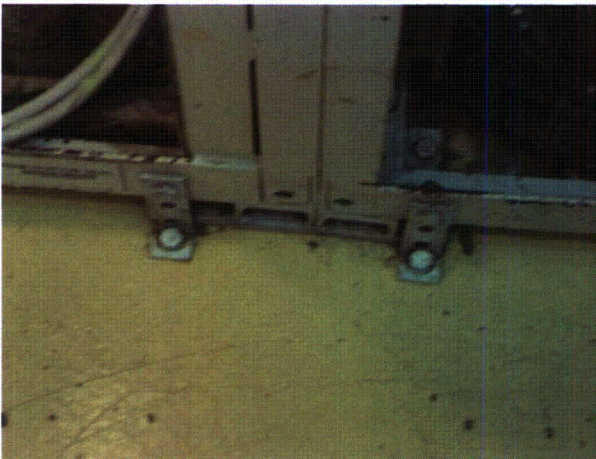
Photos



2PNL2C08 8-14-12 165



2PNL2C08 8-14-12 166



ATTACHMENT 3

WALKDOWN CHECKLISTS

Status: Y N U

Seismic Walkdown Checklist (SWC)

Equipment ID No.: 2PNL2C08

Equipment Class: (20) Instrumentation and Control Panels and Cabinets

Equipment Description: ENGINEERING SAFEGUARDS CONTROL

2PNL2C08 8-14-12 167

2PNL2C08 8-14-12 168



2PNL2C08 8-14-12 169



2PNL2C08 8-14-12 170



2PNL2C08 8-14-12 171



2PNL2C08 8-14-12 172

ATTACHMENT 3
WALKDOWN CHECKLISTS

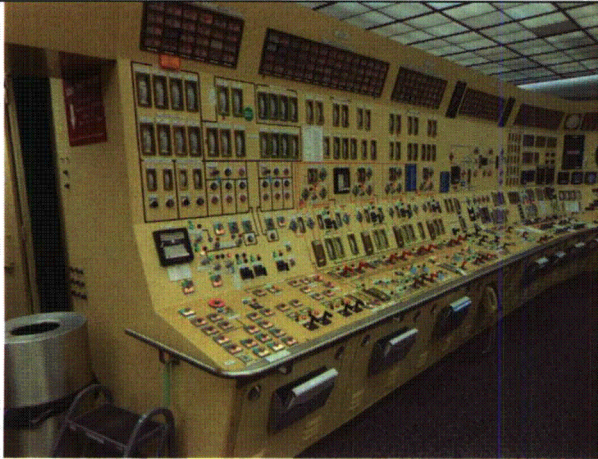
Status: Y N U

Seismic Walkdown Checklist (SWC)

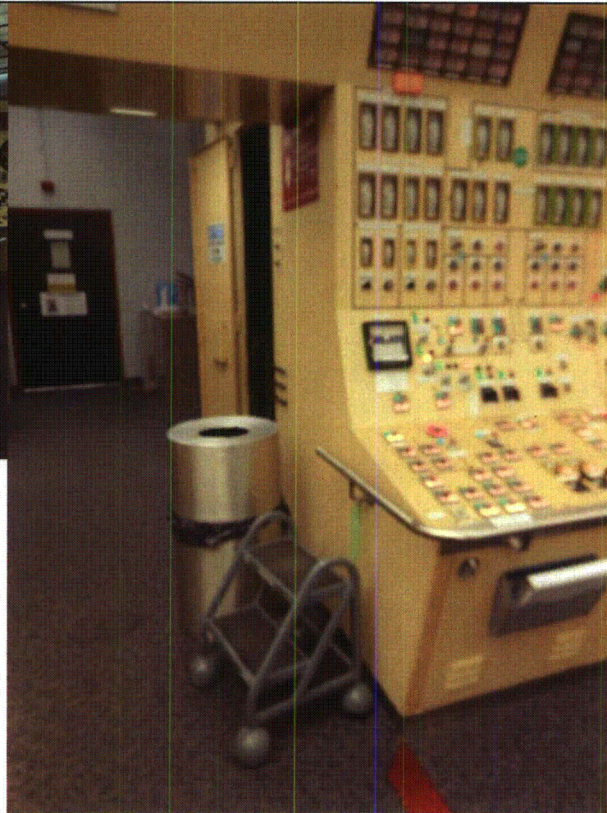
Equipment ID No.: 2PNL2C08

Equipment Class: (20) Instrumentation and Control Panels and Cabinets

Equipment Description: ENGINEERING SAFEGUARDS CONTROL



2PNL2C08 8-14-12 173



2PNL2C08 8-14-12 174

ATTACHMENT 3
WALKDOWN CHECKLISTS

Status: Y N U

Seismic Walkdown Checklist (SWC)

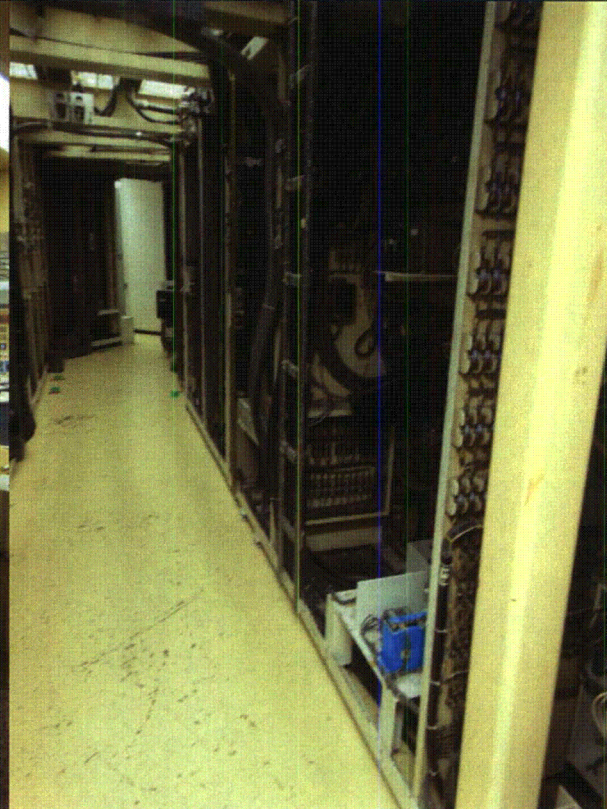
Equipment ID No.: 2PNL2C08

Equipment Class: (20) Instrumentation and Control Panels and Cabinets

Equipment Description: ENGINEERING SAFEGUARDS CONTROL



2PNL2C08 8-14-12 175



2PNL2C08 8-14-12 177

ATTACHMENT 3
WALKDOWN CHECKLISTS

Status: Y N U

Seismic Walkdown Checklist (SWC)

Equipment ID No.: 2PNL2C08

Equipment Class: (20) Instrumentation and Control Panels and Cabinets

Equipment Description: ENGINEERING SAFEGUARDS CONTROL



2PNL2C08 8-14-12 178

ATTACHMENT 3
WALKDOWN CHECKLISTS

Status: Y N U

Seismic Walkdown Checklist (SWC)

Equipment ID No.: 2PNL2C09

Equipment Class: (20) Instrumentation and Control Panels and Cabinets

Equipment Description: ENGINEERING SAFEGUARDS CONTROL

Project: CCNPP 2 SWEL

Location (Bldg, Elev, Room/Area): AUX, 45.00 ft, CAL-AB-405

Manufacturer/Model: _____

Instructions for Completing Checklist

This checklist may be used to document the results of the Seismic Walkdown of an item of equipment on the SWEL. The space below each of the following questions may be used to record the results of judgments and findings. Additional space is provided at the end of this checklist for documenting other comments.

Anchorage

1. Is anchorage configuration verification required (i.e., is the item one of the 50% of SWEL items requiring such verification)? No

2. Is the anchorage free of bent, broken, missing or loose hardware? Yes

3. Is the anchorage free of corrosion that is more than mild surface oxidation? Yes

4. Is the anchorage free of visible cracks in the concrete near the anchors? Yes

5. Is the anchorage configuration consistent with plant documentation? (Note: This question only applies if the item is one of the 50% for which an anchorage configuration verification is required.) Not Applicable

6. Based on the above anchorage evaluations, is the anchorage free of potentially adverse seismic conditions? Yes

ATTACHMENT 3
WALKDOWN CHECKLISTS

Status: Y N U

Seismic Walkdown Checklist (SWC)

Equipment ID No.: 2PNL2C09

Equipment Class: (20) Instrumentation and Control Panels and Cabinets

Equipment Description: ENGINEERING SAFEGUARDS CONTROL

Interaction Effects

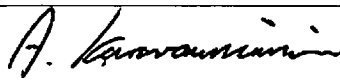
7. Are soft targets free from impact by nearby equipment or structures? Yes
8. Are overhead equipment, distribution systems, ceiling tiles and lighting, and masonry block walls not likely to collapse onto the equipment? Yes
Observed a drop ceiling and light diffuser ceiling.
10/3/12 - The control room ceiling has been previously evaluated by CCNPP and was determined to not be a credible seismic concern.

Observed a masonry block wall behind the panels. The block wall, identified as AA on drawing A-259, is safety-related and thus seismically rated per IE Bulletin 80-11.
9. Do attached lines have adequate flexibility to avoid damage? Yes
10. Based on the above seismic interaction evaluations, is equipment free of potentially adverse seismic interaction effects? Yes
-

Other Adverse Conditions

11. Have you looked for and found no adverse seismic conditions that could adversely affect the safety functions of the equipment? Yes
-

Comments

Evaluated by:  A. Karavoussianis Date: 11/09/2012



C. Figliolini

11/09/2012

ATTACHMENT 3

WALKDOWN CHECKLISTS

Status: Y N U

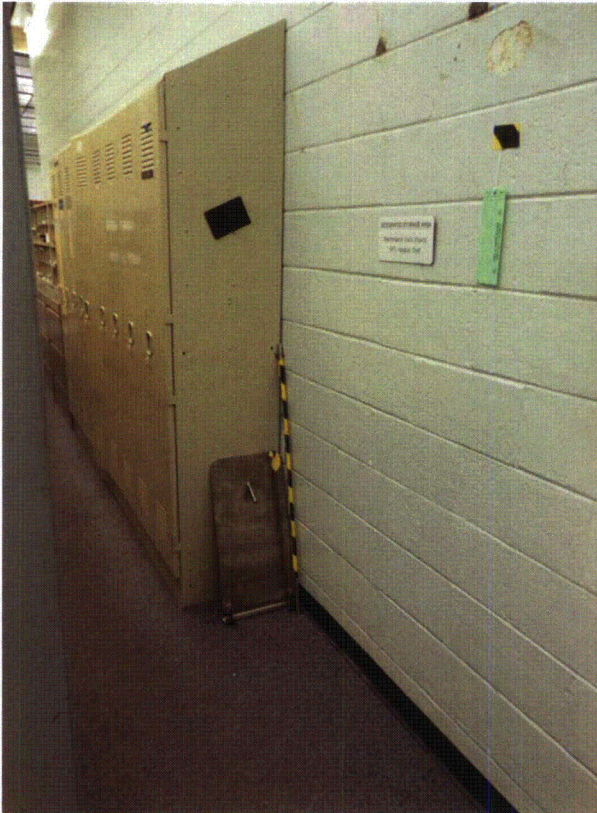
Seismic Walkdown Checklist (SWC)

Equipment ID No.: 2PNL2C09

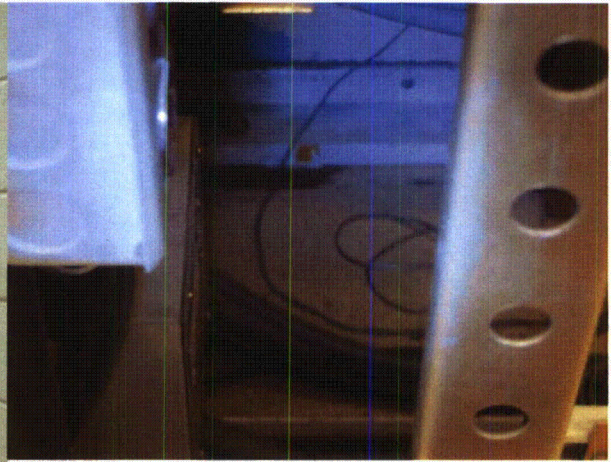
Equipment Class: (20) Instrumentation and Control Panels and Cabinets

Equipment Description: ENGINEERING SAFEGUARDS CONTROL

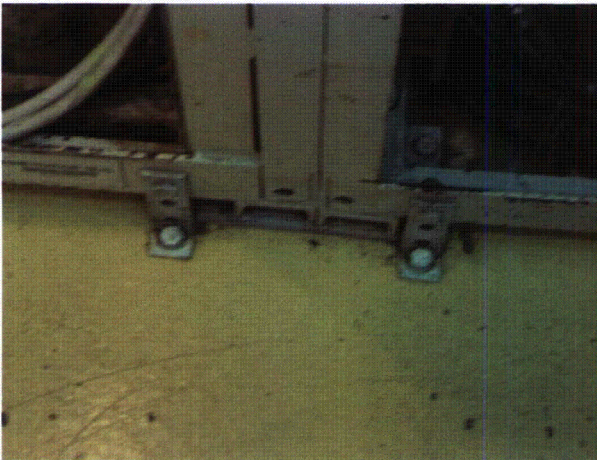
Photos



2PNL2C09 8-14-12 165



2PNL2C09 8-14-12 166



ATTACHMENT 3

WALKDOWN CHECKLISTS

Status: Y N U

Seismic Walkdown Checklist (SWC)

Equipment ID No.: 2PNL2C09

Equipment Class: (20) Instrumentation and Control Panels and Cabinets

Equipment Description: ENGINEERING SAFEGUARDS CONTROL

2PNL2C09 8-14-12 167

2PNL2C09 8-14-12 168



2PNL2C09 8-14-12 169



2PNL2C09 8-14-12 170



2PNL2C09 8-14-12 171



2PNL2C09 8-14-12 172

ATTACHMENT 3

WALKDOWN CHECKLISTS

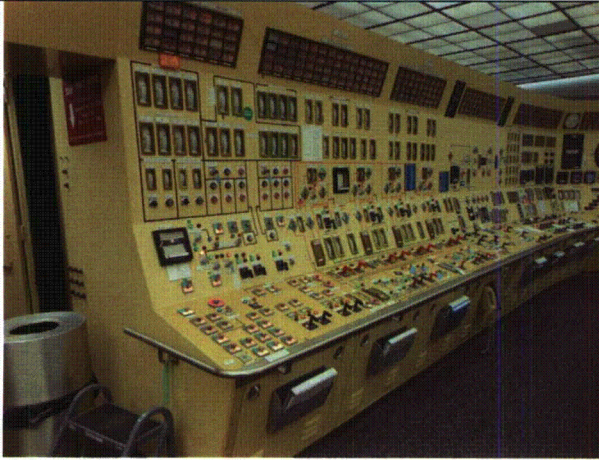
Status: Y N U

Seismic Walkdown Checklist (SWC)

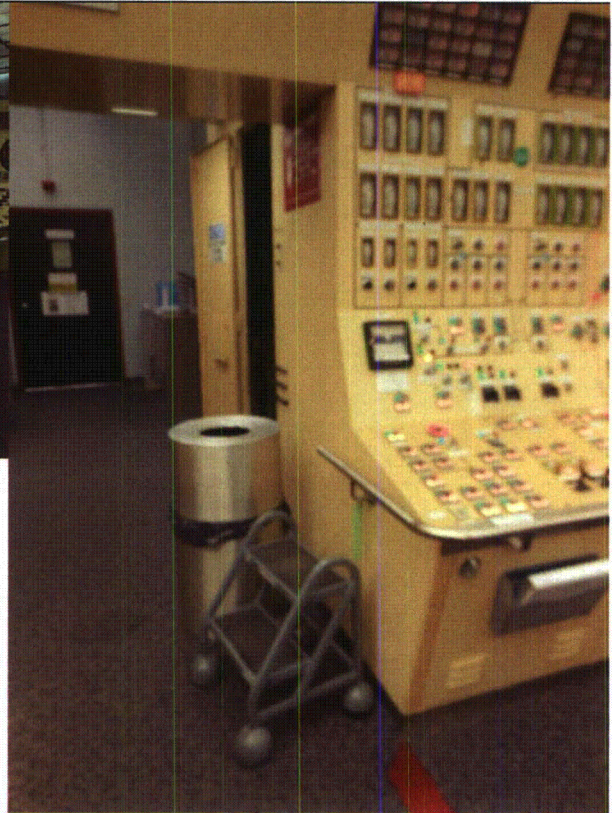
Equipment ID No.: 2PNL2C09

Equipment Class: (20) Instrumentation and Control Panels and Cabinets

Equipment Description: ENGINEERING SAFEGUARDS CONTROL



2PNL2C09 8-14-12 173



2PNL2C09 8-14-12 174

ATTACHMENT 3
WALKDOWN CHECKLISTS

Status: Y N U

Seismic Walkdown Checklist (SWC)

Equipment ID No.: 2PNL2C09

Equipment Class: (20) Instrumentation and Control Panels and Cabinets

Equipment Description: ENGINEERING SAFEGUARDS CONTROL



2PNL2C09 8-14-12 175

2PNL2C09 8-14-12 177

ATTACHMENT 3
WALKDOWN CHECKLISTS

Status: Y N U

Seismic Walkdown Checklist (SWC)

Equipment ID No.: 2PNL2C09

Equipment Class: (20) Instrumentation and Control Panels and Cabinets

Equipment Description: ENGINEERING SAFEGUARDS CONTROL



2PNL2C09 8-14-12 178

ATTACHMENT 3
WALKDOWN CHECKLISTS

Status: Y N U

Seismic Walkdown Checklist (SWC)

Equipment ID No.: 2PNL2C10

Equipment Class: (20) Instrumentation and Control Panels and Cabinets

Equipment Description: ENGINEERING SAFEGUARDS CONTROL

Project: CCNPP 2 SWEL

Location (Bldg, Elev, Room/Area): AUX, 45.00 ft, CAL-AB-405

Manufacturer/Model: _____

Instructions for Completing Checklist

This checklist may be used to document the results of the Seismic Walkdown of an item of equipment on the SWEL. The space below each of the following questions may be used to record the results of judgments and findings. Additional space is provided at the end of this checklist for documenting other comments.

Anchorage

1. Is anchorage configuration verification required (i.e., is the item one of the 50% of SWEL items requiring such verification)? No

2. Is the anchorage free of bent, broken, missing or loose hardware? Yes

3. Is the anchorage free of corrosion that is more than mild surface oxidation? Yes

4. Is the anchorage free of visible cracks in the concrete near the anchors? Yes

5. Is the anchorage configuration consistent with plant documentation? (Note: This question only applies if the item is one of the 50% for which an anchorage configuration verification is required.) Not Applicable

6. Based on the above anchorage evaluations, is the anchorage free of potentially adverse seismic conditions? Yes

ATTACHMENT 3
WALKDOWN CHECKLISTS

Status: Y N U

Seismic Walkdown Checklist (SWC)

Equipment ID No.: 2PNL2C10

Equipment Class: (20) Instrumentation and Control Panels and Cabinets

Equipment Description: ENGINEERING SAFEGUARDS CONTROL

Interaction Effects

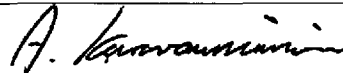
7. Are soft targets free from impact by nearby equipment or structures? Yes
8. Are overhead equipment, distribution systems, ceiling tiles and lighting, and masonry block walls not likely to collapse onto the equipment? Yes
*Observed a drop ceiling and light diffuser ceiling.
10/3/12 - The control room ceiling has been previously evaluated by CCNPP and was determined to not be a credible seismic concern.*
Observed a masonry block wall behind the panels. The block wall, identified as AA on drawing A-259, is safety-related and thus seismically rated per IE Bulletin 80-11.
9. Do attached lines have adequate flexibility to avoid damage? Yes
10. Based on the above seismic interaction evaluations, is equipment free of potentially adverse seismic interaction effects? Yes
-

Other Adverse Conditions

11. Have you looked for and found no adverse seismic conditions that could adversely affect the safety functions of the equipment? Yes
-

Comments

Evaluated by:



A. Karavoussianis

Date: 11/09/2012



C. Figliolini

11/09/2012

ATTACHMENT 3

WALKDOWN CHECKLISTS

Status: Y N U

Seismic Walkdown Checklist (SWC)

Equipment ID No.: 2PNL2C10

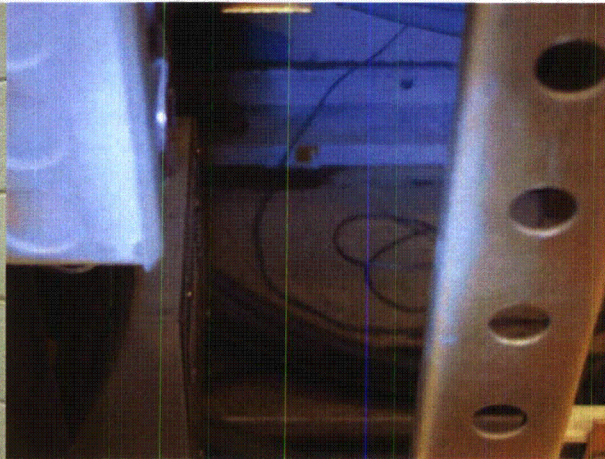
Equipment Class: (20) Instrumentation and Control Panels and Cabinets

Equipment Description: ENGINEERING SAFEGUARDS CONTROL

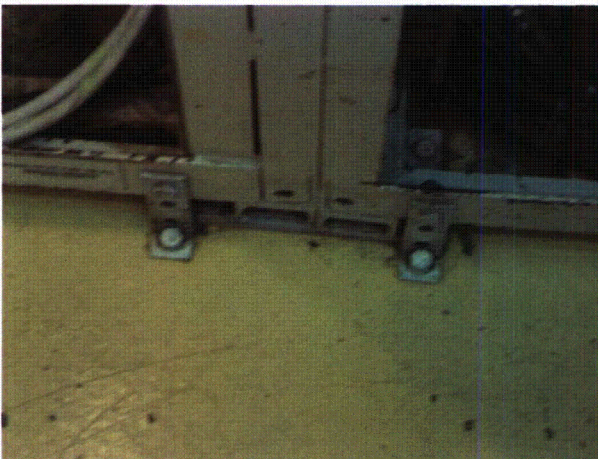
Photos



2PNL2C10 8-14-12 165



2PNL2C10 8-14-12 166



ATTACHMENT 3
WALKDOWN CHECKLISTS

Status: Y N U

Seismic Walkdown Checklist (SWC)

Equipment ID No.: 2PNL2C10

Equipment Class: (20) Instrumentation and Control Panels and Cabinets

Equipment Description: ENGINEERING SAFEGUARDS CONTROL

2PNL2C10 8-14-12 167

2PNL2C10 8-14-12 168



2PNL2C10 8-14-12 169



2PNL2C10 8-14-12 170



2PNL2C10 8-14-12 171



2PNL2C10 8-14-12 172

ATTACHMENT 3
WALKDOWN CHECKLISTS

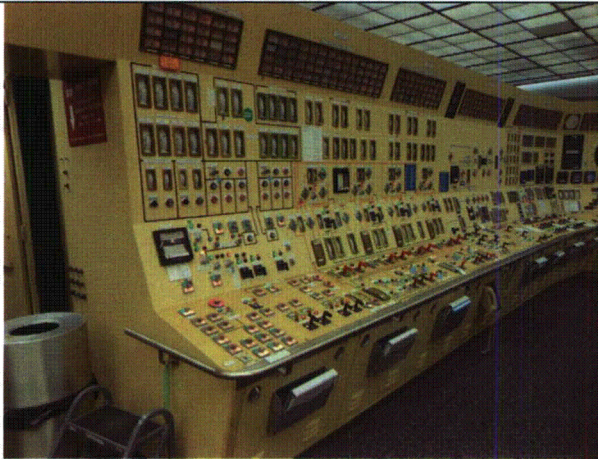
Status: Y N U

Seismic Walkdown Checklist (SWC)

Equipment ID No.: 2PNL2C10

Equipment Class: (20) Instrumentation and Control Panels and Cabinets

Equipment Description: ENGINEERING SAFEGUARDS CONTROL



2PNL2C10 8-14-12 173



2PNL2C10 8-14-12 174

ATTACHMENT 3

WALKDOWN CHECKLISTS

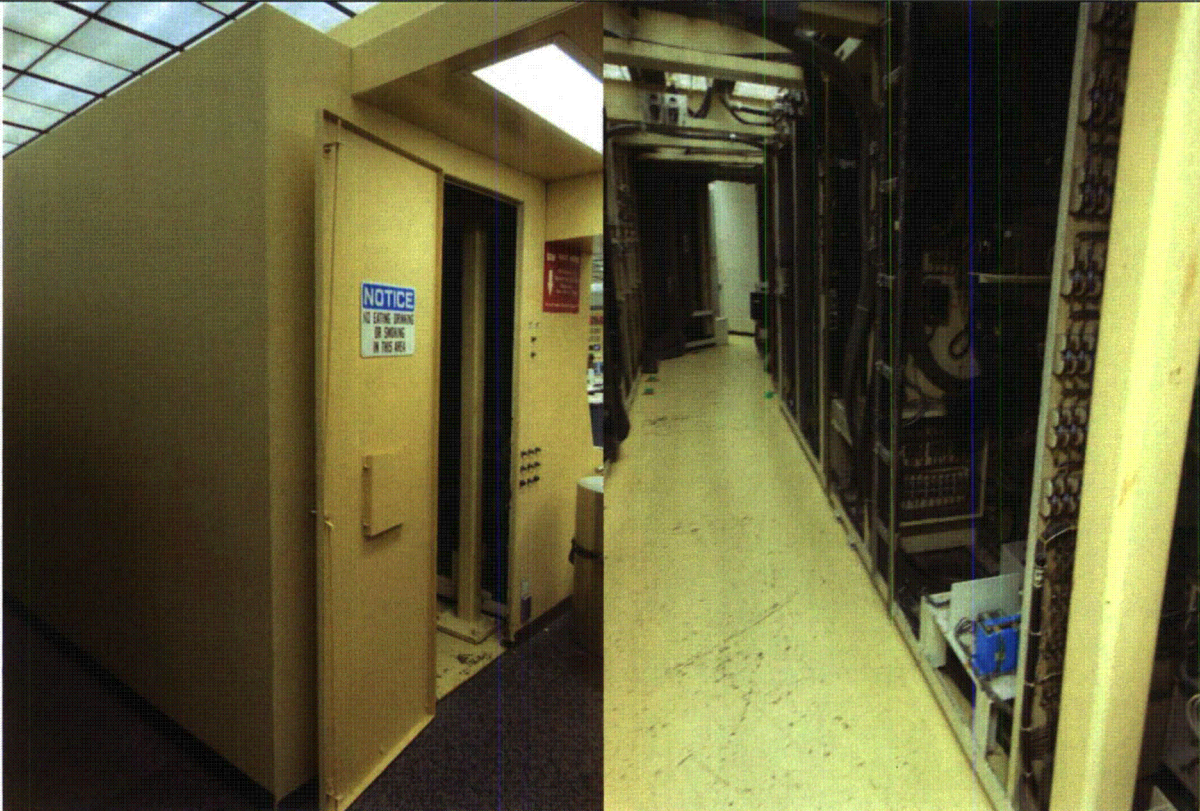
Status: Y N U

Seismic Walkdown Checklist (SWC)

Equipment ID No.: 2PNL2C10

Equipment Class: (20) Instrumentation and Control Panels and Cabinets

Equipment Description: ENGINEERING SAFEGUARDS CONTROL



2PNL2C10 8-14-12 175

2PNL2C10 8-14-12 177

ATTACHMENT 3
WALKDOWN CHECKLISTS

Status: Y N U

Seismic Walkdown Checklist (SWC)

Equipment ID No.: 2PNL2C10

Equipment Class: (20) Instrumentation and Control Panels and Cabinets

Equipment Description: ENGINEERING SAFEGUARDS CONTROL



2PNL2C10 8-14-12 178

ATTACHMENT 3
WALKDOWN CHECKLISTS

Status: Y N U

Seismic Walkdown Checklist (SWC)

Equipment ID No.: 2PNL2C61B

Equipment Class: (20) Instrumentation and Control Panels and Cabinets

Equipment Description: 2B DG LOCAL CONTROL PANEL

Project: CCNPP 2 SWEL

Location (Bldg, Elev, Room/Area): AUX, 45.00 ft, CAL-AB-416

Manufacturer/Model: _____

Instructions for Completing Checklist

This checklist may be used to document the results of the Seismic Walkdown of an item of equipment on the SWEL. The space below each of the following questions may be used to record the results of judgments and findings. Additional space is provided at the end of this checklist for documenting other comments.

Anchorage

- | | |
|---|-----|
| 1. Is anchorage configuration verification required (i.e., is the item one of the 50% of SWEL items requiring such verification)? | Yes |
| 2. Is the anchorage free of bent, broken, missing or loose hardware?
<i>Anchorage is inaccessible.</i> | No |
| 3. Is the anchorage free of corrosion that is more than mild surface oxidation?
<i>Anchorage is inaccessible.</i> | No |
| 4. Is the anchorage free of visible cracks in the concrete near the anchors?
<i>Anchorage is inaccessible.</i> | No |
| 5. Is the anchorage configuration consistent with plant documentation? (Note: This question only applies if the item is one of the 50% for which an anchorage configuration verification is required.)
<i>Anchorage is inaccessible.</i> | No |
| 6. Based on the above anchorage evaluations, is the anchorage free of potentially adverse seismic conditions?
<i>Anchorage is inaccessible.</i> | No |

ATTACHMENT 3
WALKDOWN CHECKLISTS

Status: Y N U

Seismic Walkdown Checklist (SWC)

Equipment ID No.: 2PNL2C61B

Equipment Class: (20) Instrumentation and Control Panels and Cabinets

Equipment Description: 2B DG LOCAL CONTROL PANEL

Interaction Effects

7. Are soft targets free from impact by nearby equipment or structures? Yes

There is a 1/2" gap between the cabinet and a conduit supported on wall.

Evaluated using 8 Hz frequency for cabinets

2% Damping Ratio, 1.5 PF

Response Spectrum AB045D2N.dat

A=0.30g

*$D = (1.5 * 0.30 * 386) / (8 * 2 * 3.14)^2 = 0.07" < 1/2" \text{ OK}$*

8. Are overhead equipment, distribution systems, ceiling tiles and lighting, and masonry block walls not likely to collapse onto the equipment? Yes

If not III, overhead lights in front of the cabinet may fall and strike relay and switches.

10/3/12 - Overhead lights were deemed not a credible seismic concern due to their lightweight and to typical construction practices. Also, they have been previously evaluated by CCNPP and found seismically acceptable.

9. Do attached lines have adequate flexibility to avoid damage? Yes

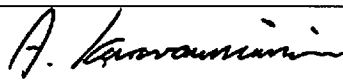
10. Based on the above seismic interaction evaluations, is equipment free of potentially adverse seismic interaction effects? Yes

Other Adverse Conditions

11. Have you looked for and found no adverse seismic conditions that could adversely affect the safety functions of the equipment? Yes

Comments

Evaluated by:



A. Karavoussianis

Date: 11/09/2012



C. Figliolini

11/09/2012

ATTACHMENT 3
WALKDOWN CHECKLISTS

Status: Y N U

Seismic Walkdown Checklist (SWC)

Equipment ID No.: 2PNL2C61B

Equipment Class: (20) Instrumentation and Control Panels and Cabinets

Equipment Description: 2B DG LOCAL CONTROL PANEL

Photos



2PNL2C61B 8-13-12 055



2PNL2C61B 8-13-12 056

ATTACHMENT 3
WALKDOWN CHECKLISTS

Status: Y N U

Seismic Walkdown Checklist (SWC)

Equipment ID No.: 2PNL2C61B

Equipment Class: (20) Instrumentation and Control Panels and Cabinets

Equipment Description: 2B DG LOCAL CONTROL PANEL



2PNL2C61B 8-13-12 057



2PNL2C61B 8-13-12 058

ATTACHMENT 3
WALKDOWN CHECKLISTS

Status: Y N U

Seismic Walkdown Checklist (SWC)

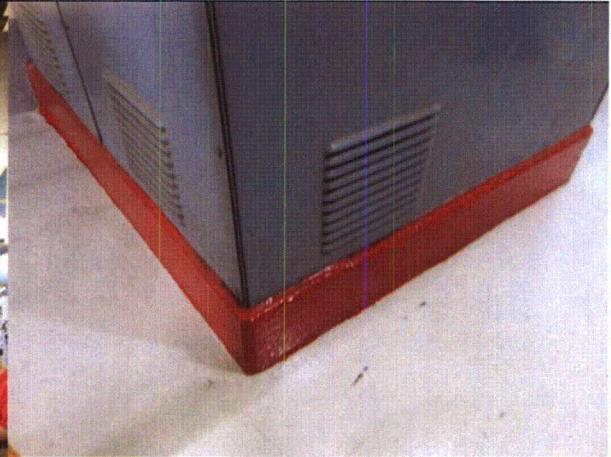
Equipment ID No.: 2PNL2C61B

Equipment Class: (20) Instrumentation and Control Panels and Cabinets

Equipment Description: 2B DG LOCAL CONTROL PANEL



2PNL2C61B 8-13-12 059



2PNL2C61B 8-13-12 060

ATTACHMENT 3

WALKDOWN CHECKLISTS

Status: Y N U

Seismic Walkdown Checklist (SWC)

Equipment ID No.: 2PNL2C61C

Equipment Class: (20) Instrumentation and Control Panels and Cabinets

Equipment Description: 2B DG LOCAL CONTROL PANEL

Project: CCNPP 2 SWEL

Location (Bldg, Elev, Room/Area): AUX, 45.00 ft, CAL-AB-416

Manufacturer/Model: _____

Instructions for Completing Checklist

This checklist may be used to document the results of the Seismic Walkdown of an item of equipment on the SWEL. The space below each of the following questions may be used to record the results of judgments and findings. Additional space is provided at the end of this checklist for documenting other comments.

Anchorage

1. Is anchorage configuration verification required (i.e., is the item one of the 50% of SWEL items requiring such verification)? No

2. Is the anchorage free of bent, broken, missing or loose hardware? No
Anchorage is inaccessible.

3. Is the anchorage free of corrosion that is more than mild surface oxidation? No
Anchorage is inaccessible.

4. Is the anchorage free of visible cracks in the concrete near the anchors? No
Anchorage is inaccessible.

5. Is the anchorage configuration consistent with plant documentation? (Note: This question only applies if the item is one of the 50% for which an anchorage configuration verification is required.) Not Applicable

6. Based on the above anchorage evaluations, is the anchorage free of potentially adverse seismic conditions? No
Anchorage is inaccessible.

ATTACHMENT 3
WALKDOWN CHECKLISTS

Status: Y N U

Seismic Walkdown Checklist (SWC)

Equipment ID No.: 2PNL2C61C

Equipment Class: (20) Instrumentation and Control Panels and Cabinets

Equipment Description: 2B DG LOCAL CONTROL PANEL

Interaction Effects

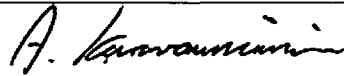
7. Are soft targets free from impact by nearby equipment or structures? Yes
8. Are overhead equipment, distribution systems, ceiling tiles and lighting, and masonry block walls not likely to collapse onto the equipment? Yes
If not II/I, overhead lights in front of the cabinet may fall and strike relay and switches.
10/3/12 - Overhead lights were deemed not a credible seismic concern due to their lightweight and to typical construction practices. Also, they have been previously evaluated by CCNPP and found seismically acceptable.
9. Do attached lines have adequate flexibility to avoid damage? Yes
10. Based on the above seismic interaction evaluations, is equipment free of potentially adverse seismic interaction effects? Yes
-

Other Adverse Conditions

11. Have you looked for and found no adverse seismic conditions that could adversely affect the safety functions of the equipment? Yes
-

Comments

Evaluated by:



A. Karavoussianis

Date: 11/09/2012



C. Figliolini

11/09/2012

Photos

ATTACHMENT 3

WALKDOWN CHECKLISTS

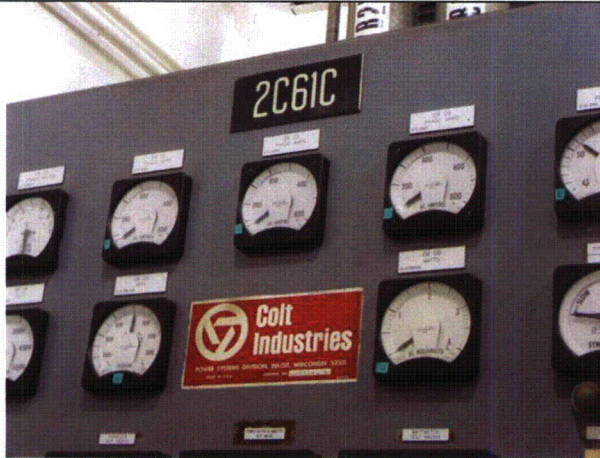
Status: Y N U

Seismic Walkdown Checklist (SWC)

Equipment ID No.: 2PNL2C61C

Equipment Class: (20) Instrumentation and Control Panels and Cabinets

Equipment Description: 2B DG LOCAL CONTROL PANEL



2PNL2C61C 8-13-12 061



2PNL2C61C 8-13-12 062

ATTACHMENT 3

WALKDOWN CHECKLISTS

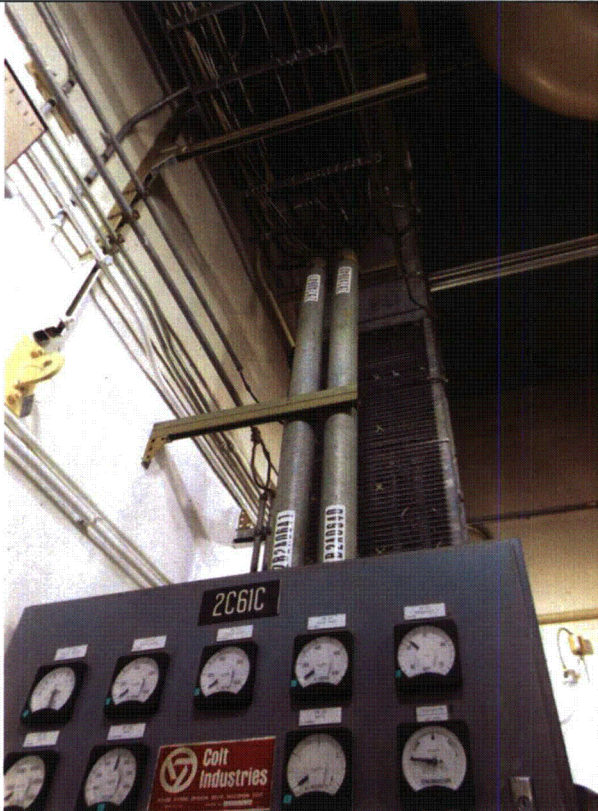
Status: Y N U

Seismic Walkdown Checklist (SWC)

Equipment ID No.: 2PNL2C61C

Equipment Class: (20) Instrumentation and Control Panels and Cabinets

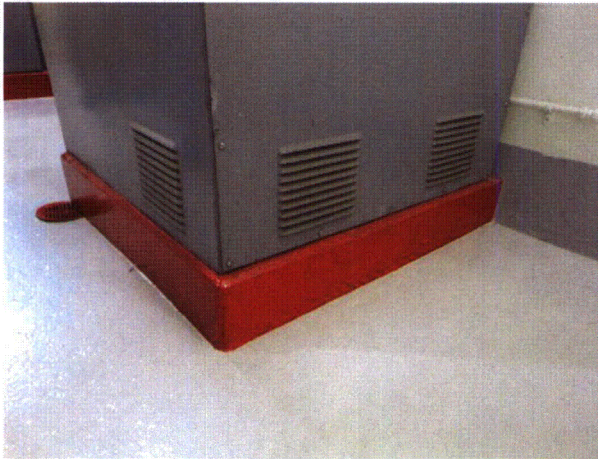
Equipment Description: 2B DG LOCAL CONTROL PANEL



2PNL2C61C 8-13-12 063



2PNL2C61C 8-13-12 064



2PNL2C61C 8-13-12 065

ATTACHMENT 3
WALKDOWN CHECKLISTS

Status: Y N U

Seismic Walkdown Checklist (SWC)

Equipment ID No.: 2PNL2C67

Equipment Class: (20) Instrumentation and Control Panels and Cabinets

Equipment Description: ESFAS ACT LOGIC & RELAY CAB A

Project: CCNPP 2 SWEL

Location (Bldg, Elev, Room/Area): AUX, 27.00 ft, CAL-AB-302

Manufacturer/Model: _____

Instructions for Completing Checklist

This checklist may be used to document the results of the Seismic Walkdown of an item of equipment on the SWEL. The space below each of the following questions may be used to record the results of judgments and findings. Additional space is provided at the end of this checklist for documenting other comments.

Anchorage

1. Is anchorage configuration verification required (i.e., is the item one of the 50% of SWEL items requiring such verification)? Yes

2. Is the anchorage free of bent, broken, missing or loose hardware? Yes

3. Is the anchorage free of corrosion that is more than mild surface oxidation? Yes

4. Is the anchorage free of visible cracks in the concrete near the anchors? Yes

5. Is the anchorage configuration consistent with plant documentation? (Note: This question only applies if the item is one of the 50% for which an anchorage configuration verification is required.) Yes
Anchorage is consistent with calculation CA02066.

6. Based on the above anchorage evaluations, is the anchorage free of potentially adverse seismic conditions? Yes

ATTACHMENT 3
WALKDOWN CHECKLISTS

Status: Y N U

Seismic Walkdown Checklist (SWC)

Equipment ID No.: 2PNL2C67

Equipment Class: (20) Instrumentation and Control Panels and Cabinets

Equipment Description: ESFAS ACT LOGIC & RELAY CAB A

Interaction Effects

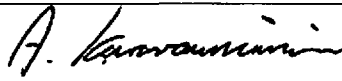
- | | |
|---|-----|
| 7. Are soft targets free from impact by nearby equipment or structures? | Yes |
| | |
| 8. Are overhead equipment, distribution systems, ceiling tiles and lighting, and masonry block walls not likely to collapse onto the equipment? | Yes |
| | |
| 9. Do attached lines have adequate flexibility to avoid damage? | Yes |
| | |
| 10. Based on the above seismic interaction evaluations, is equipment free of potentially adverse seismic interaction effects? | Yes |
-

Other Adverse Conditions

- | | |
|--|-----|
| 11. Have you looked for and found no adverse seismic conditions that could adversely affect the safety functions of the equipment? | Yes |
|--|-----|
-

Comments

Evaluated by:



A. Karavoussianis

Date: 11/09/2012



C. Figliolini

11/09/2012

Photos

ATTACHMENT 3

WALKDOWN CHECKLISTS

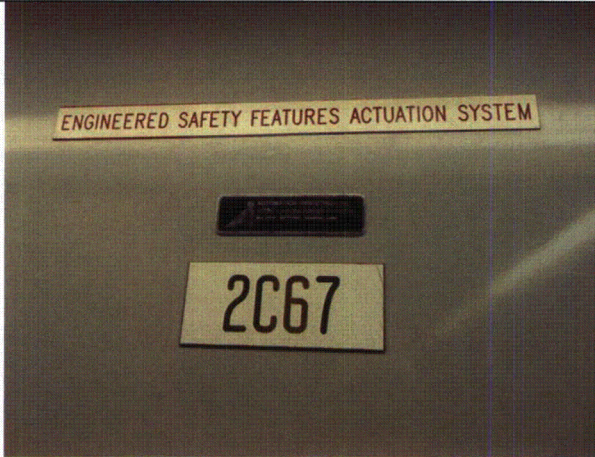
Status: Y N U

Seismic Walkdown Checklist (SWC)

Equipment ID No.: 2PNL2C67

Equipment Class: (20) Instrumentation and Control Panels and Cabinets

Equipment Description: ESFAS ACT LOGIC & RELAY CAB A



2PNL2C67 8-14-12 098



2PNL2C67 8-14-12 099

ATTACHMENT 3
WALKDOWN CHECKLISTS

Status: Y N U

Seismic Walkdown Checklist (SWC)

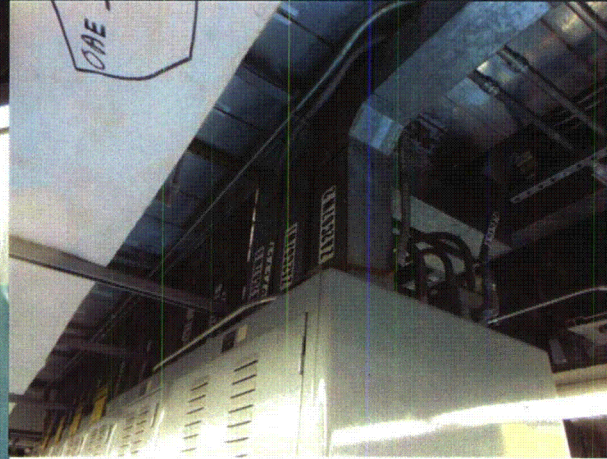
Equipment ID No.: 2PNL2C67

Equipment Class: (20) Instrumentation and Control Panels and Cabinets

Equipment Description: ESFAS ACT LOGIC & RELAY CAB A



2PNL2C67 8-14-12 100



2PNL2C67 8-14-12 101

ATTACHMENT 3
WALKDOWN CHECKLISTS

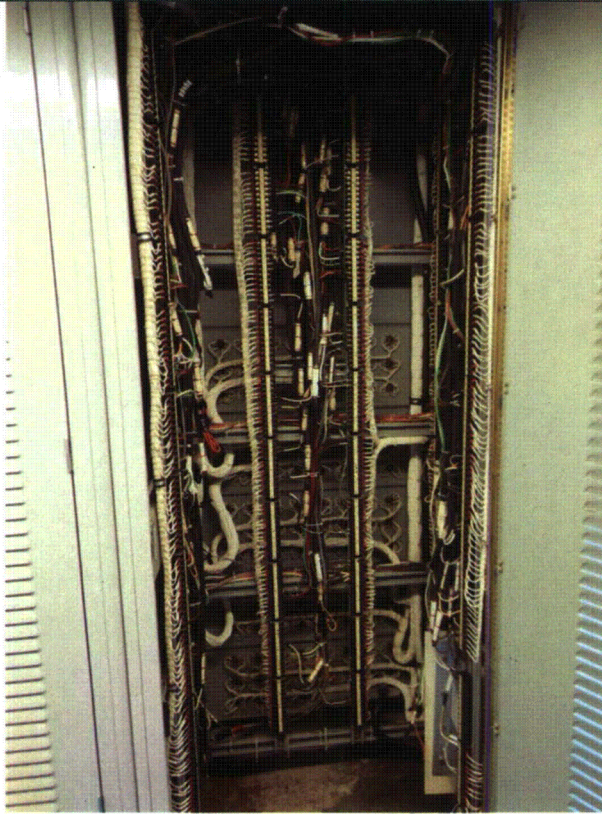
Status: Y N U

Seismic Walkdown Checklist (SWC)

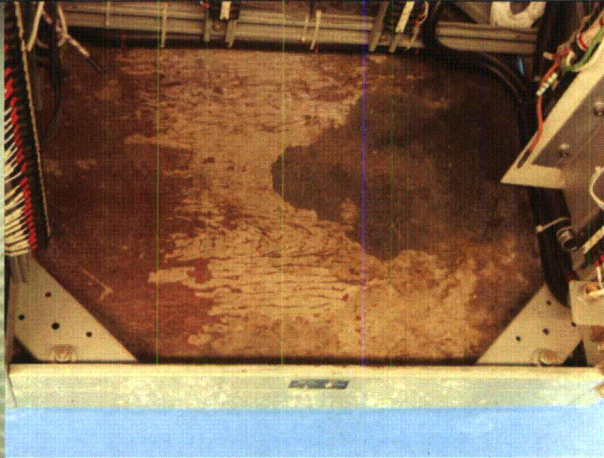
Equipment ID No.: 2PNL2C67

Equipment Class: (20) Instrumentation and Control Panels and Cabinets

Equipment Description: ESFAS ACT LOGIC & RELAY CAB A



2PNL2C67 8-14-12 102



2PNL2C67 8-14-12 103

ATTACHMENT 3
WALKDOWN CHECKLISTS

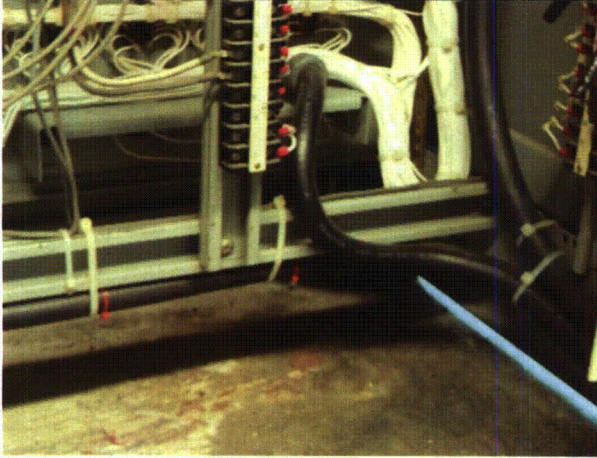
Status: Y N U

Seismic Walkdown Checklist (SWC)

Equipment ID No.: 2PNL2C67

Equipment Class: (20) Instrumentation and Control Panels and Cabinets

Equipment Description: ESFAS ACT LOGIC & RELAY CAB A



2PNL2C67 8-14-12 104



2PNL2C67 8-14-12 105

ATTACHMENT 3
WALKDOWN CHECKLISTS

Status: Y N U

Seismic Walkdown Checklist (SWC)

Equipment ID No.: 2PNL2D11

Equipment Class: (2) Low Voltage Switchgear

Equipment Description: 125VDC PNL DC21 2D11

Project: CCNPP 2 SWEL

Location (Bldg, Elev, Room/Area): AUX, 27.00 ft, CAL-AB-302

Manufacturer/Model: _____

Instructions for Completing Checklist

This checklist may be used to document the results of the Seismic Walkdown of an item of equipment on the SWEL. The space below each of the following questions may be used to record the results of judgments and findings. Additional space is provided at the end of this checklist for documenting other comments.

Anchorage

- | | |
|---|-----|
| 1. Is anchorage configuration verification required (i.e., is the item one of the 50% of SWEL items requiring such verification)?
<i>Defer to outage</i> | Yes |
| 2. Is the anchorage free of bent, broken, missing or loose hardware?
<i>Anchorage is inaccessible.</i> | No |
| 3. Is the anchorage free of corrosion that is more than mild surface oxidation?
<i>Anchorage is inaccessible.</i> | No |
| 4. Is the anchorage free of visible cracks in the concrete near the anchors?
<i>Anchorage is inaccessible.</i> | No |
| 5. Is the anchorage configuration consistent with plant documentation? (Note: This question only applies if the item is one of the 50% for which an anchorage configuration verification is required.)
<i>Anchorage is inaccessible.</i> | No |
| 6. Based on the above anchorage evaluations, is the anchorage free of potentially adverse seismic conditions?
<i>Anchorage is inaccessible.</i> | No |
-

ATTACHMENT 3
WALKDOWN CHECKLISTS

Status: Y N U

Seismic Walkdown Checklist (SWC)

Equipment ID No.: 2PNL2D11

Equipment Class: (2) Low Voltage Switchgear

Equipment Description: 125VDC PNL DC21 2D11

Interaction Effects

7. Are soft targets free from impact by nearby equipment or structures? Yes

There is a 3/8" gap between the cabinet and the cabinet behind. Cabinet is 14.5"D x 84"W x 90" High.

Evaluated using 8 Hz frequency for cabinets

2% Damping Ratio, 1.5 PF

Response Spectrum AB027D2N.dat

A=0.25g

*$D = 2 * (1.5 * 0.25 * 386) / (8 * 2 * 3.14)^2 = 0.11" < 3/8" \text{ OK}$*

8. Are overhead equipment, distribution systems, ceiling tiles and lighting, and masonry block walls not likely to collapse onto the equipment? Yes

There are block walls nearby. Masonry block walls, identified as T, S, N, AA and BB on drawing A-260, are safety-related and thus seismically rated per IE Bulletin 80-11.

9. Do attached lines have adequate flexibility to avoid damage? Yes

10. Based on the above seismic interaction evaluations, is equipment free of potentially adverse seismic interaction effects? Yes
-

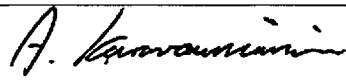
Other Adverse Conditions

11. Have you looked for and found no adverse seismic conditions that could adversely affect the safety functions of the equipment? No

Cabinet is inaccessible for internal inspection.

Comments

Evaluated by:



A. Karavoussianis

Date: 11/09/2012



C. Figliolini

11/09/2012

ATTACHMENT 3

WALKDOWN CHECKLISTS

Status: Y N U

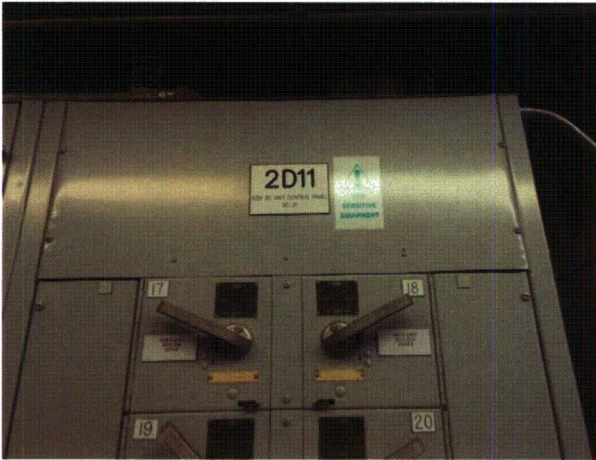
Seismic Walkdown Checklist (SWC)

Equipment ID No.: 2PNL2D11

Equipment Class: (2) Low Voltage Switchgear

Equipment Description: 125VDC PNL DC21 2D11

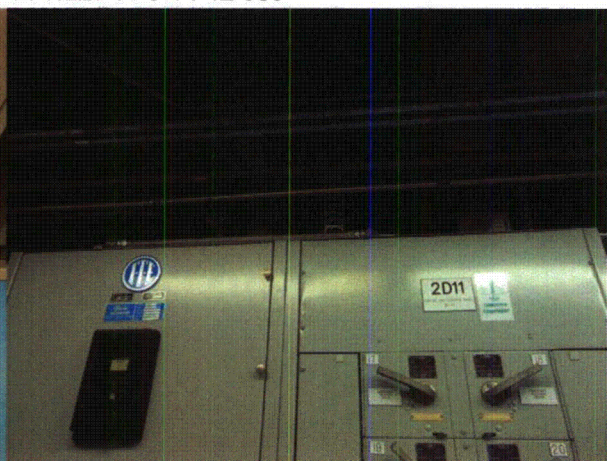
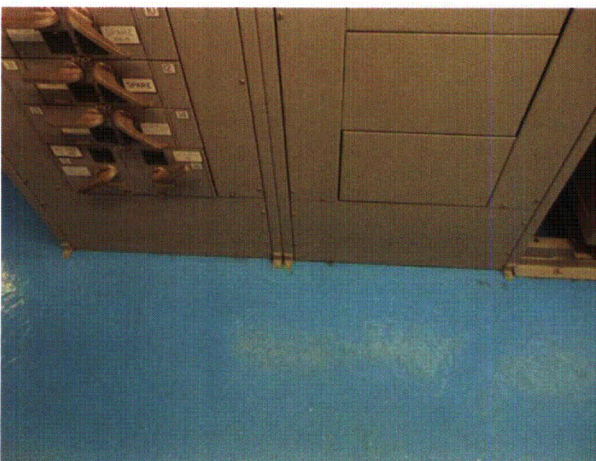
Photos



2PNL2D11 8-14-12 037



2PNL2D11 8-14-12 038



ATTACHMENT 3

WALKDOWN CHECKLISTS

Status: Y N U

Seismic Walkdown Checklist (SWC)

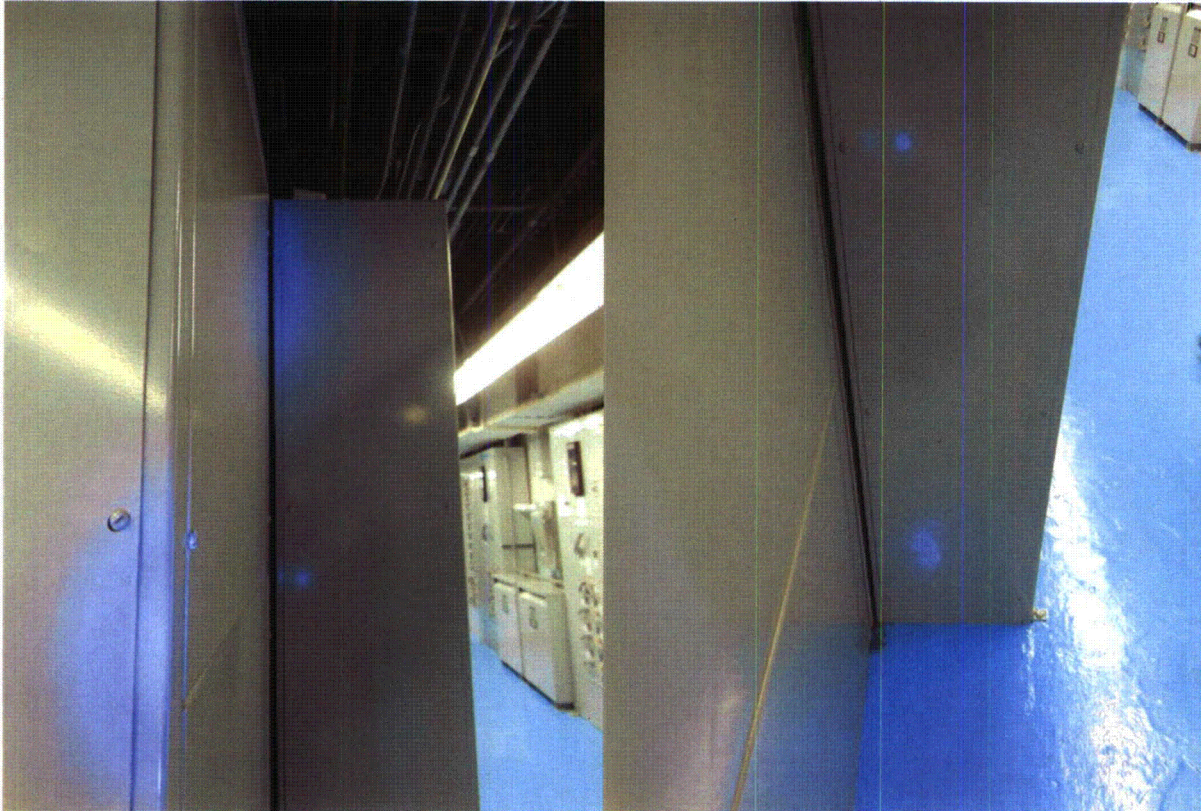
Equipment ID No.: 2PNL2D11

Equipment Class: (2) Low Voltage Switchgear

Equipment Description: 125VDC PNL DC21 2D11

2PNL2D11 8-14-12 039

2PNL2D11 8-14-12 040



2PNL2D11 8-14-12 041

2PNL2D11 8-14-12 042

ATTACHMENT 3

WALKDOWN CHECKLISTS

Status: Y N U

Seismic Walkdown Checklist (SWC)

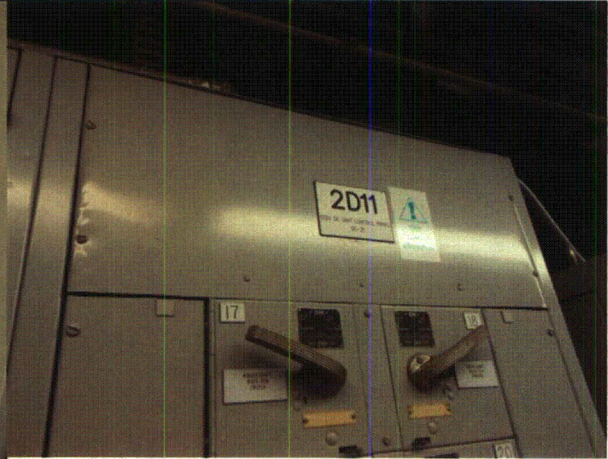
Equipment ID No.: 2PNL2D11

Equipment Class: (2) Low Voltage Switchgear

Equipment Description: 125VDC PNL DC21 2D11



2PNL2D11 8-14-12 043



2PNL2D11 8-14-12 044



2PNL2D11 8-14-12 045

2PNL2D11 8-14-12 046