

ATTACHMENT 3
WALKDOWN CHECKLISTS

Status: Y N U

Seismic Walkdown Checklist (SWC)

Equipment ID No.: 2COMPSWAC22B

Equipment Class: (12) Air Compressors

Equipment Description: 22 SW AIR COMP B

Project: CCNPP 2 SWEL

Location (Bldg, Elev, Room/Area): AUX, 5.00 ft, CAL-AB-205

Manufacturer/Model: _____

Instructions for Completing Checklist

This checklist may be used to document the results of the Seismic Walkdown of an item of equipment on the SWEL. The space below each of the following questions may be used to record the results of judgments and findings. Additional space is provided at the end of this checklist for documenting other comments.

Anchorage

1. Is anchorage configuration verification required (i.e., is the item one of the 50% of SWEL items requiring such verification)? Yes

2. Is the anchorage free of bent, broken, missing or loose hardware? Yes

3. Is the anchorage free of corrosion that is more than mild surface oxidation? Yes

4. Is the anchorage free of visible cracks in the concrete near the anchors? Not Applicable

5. Is the anchorage configuration consistent with plant documentation? (Note: This question only applies if the item is one of the 50% for which an anchorage configuration verification is required.) Yes
Anchorage is consistent with drawing 61962 Sht. 2.

6. Based on the above anchorage evaluations, is the anchorage free of potentially adverse seismic conditions? Yes

ATTACHMENT 3
WALKDOWN CHECKLISTS

Status: Y N U

Seismic Walkdown Checklist (SWC)

Equipment ID No.: 2COMPSWAC22B

Equipment Class: (12) Air Compressors

Equipment Description: 22 SW AIR COMP B

Interaction Effects

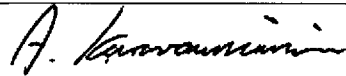
7. Are soft targets free from impact by nearby equipment or structures? Yes
8. Are overhead equipment, distribution systems, ceiling tiles and lighting, and masonry block walls not likely to collapse onto the equipment? Yes
9. Do attached lines have adequate flexibility to avoid damage? Yes
10. Based on the above seismic interaction evaluations, is equipment free of potentially adverse seismic interaction effects? Yes
-

Other Adverse Conditions

11. Have you looked for and found no adverse seismic conditions that could adversely affect the safety functions of the equipment? Yes
-

Comments

Evaluated by:



A. Karavoussianis

Date: 11/09/2012



C. Figliolini

11/09/2012

Photos

ATTACHMENT 3

WALKDOWN CHECKLISTS

Status: Y N U

Seismic Walkdown Checklist (SWC)

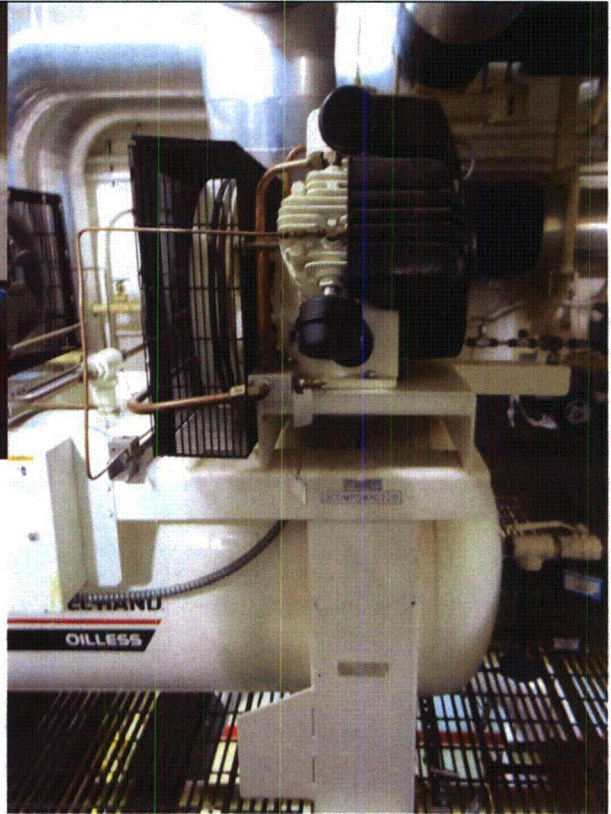
Equipment ID No.: 2COMPSWAC22B

Equipment Class: (12) Air Compressors

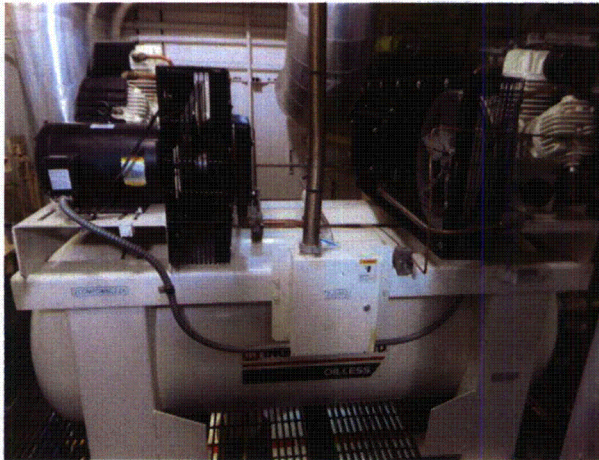
Equipment Description: 22 SW AIR COMP B



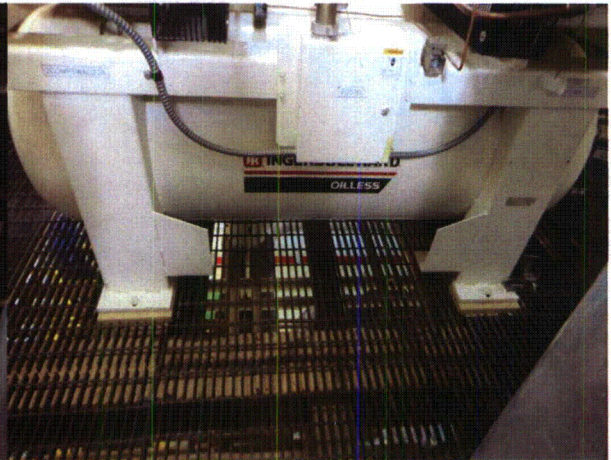
2COMPSWAC22B 8-6-12 257



2COMPSWAC22B 8-6-12 258



2COMPSWAC22B 8-6-12 259



2COMPSWAC22B 8-6-12 260

ATTACHMENT 3
WALKDOWN CHECKLISTS

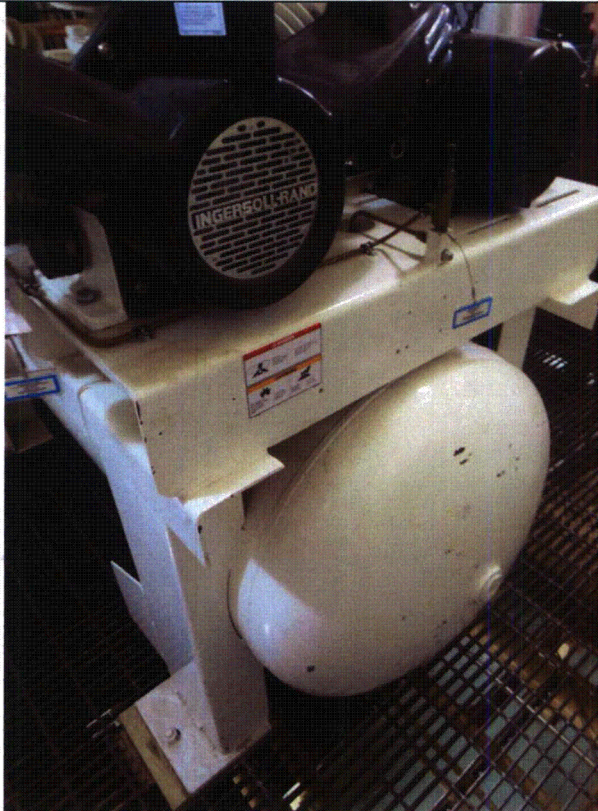
Status: Y N U

Seismic Walkdown Checklist (SWC)

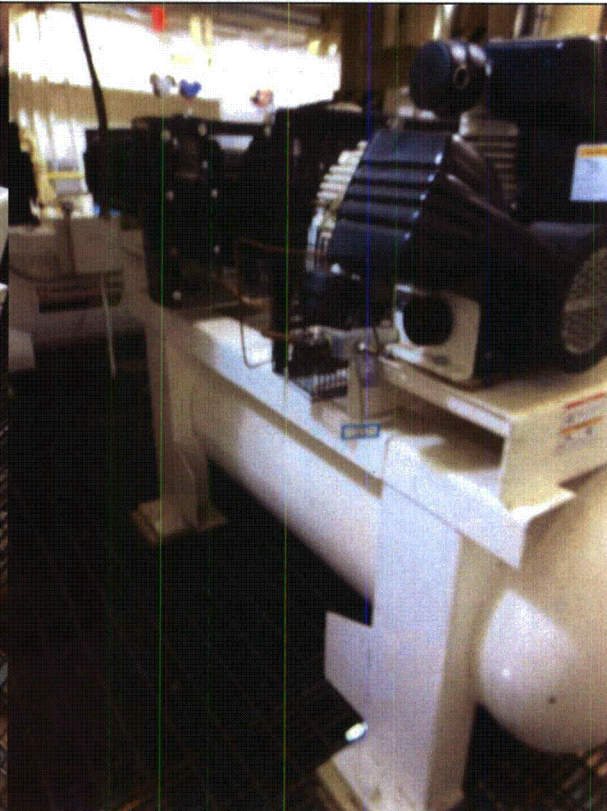
Equipment ID No.: 2COMPSWAC22B

Equipment Class: (12) Air Compressors

Equipment Description: 22 SW AIR COMP B



2COMPSWAC22B 8-6-12 261



2COMPSWAC22B 8-6-12 262

ATTACHMENT 3
WALKDOWN CHECKLISTS

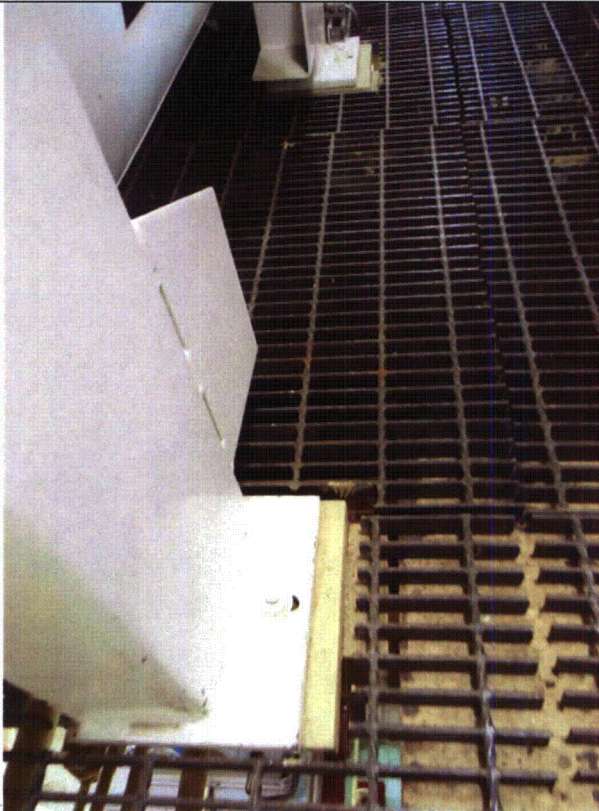
Status: Y N U

Seismic Walkdown Checklist (SWC)

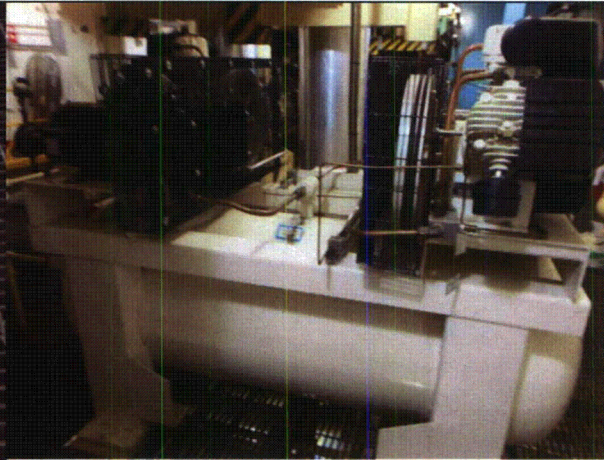
Equipment ID No.: 2COMPSWAC22B

Equipment Class: (12) Air Compressors

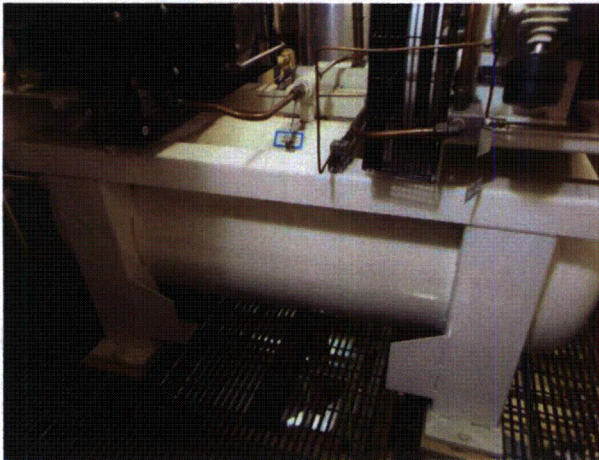
Equipment Description: 22 SW AIR COMP B



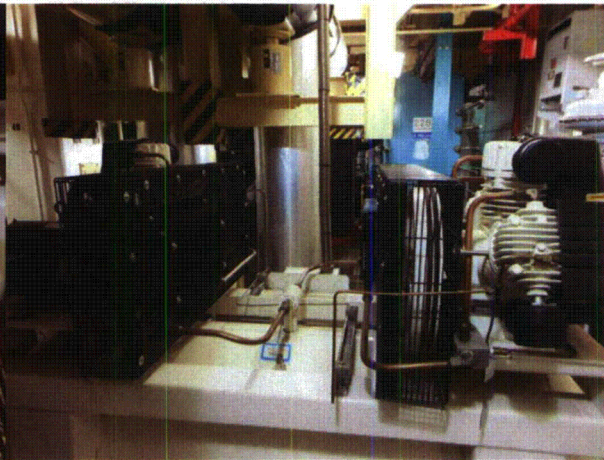
2COMPSWAC22B 8-6-12 263



2COMPSWAC22B 8-6-12 264



2COMPSWAC22B 8-6-12 265



2COMPSWAC22B 8-6-12 266

ATTACHMENT 3
WALKDOWN CHECKLISTS

Status: Y N U

Seismic Walkdown Checklist (SWC)

Equipment ID No.: 2CV1581

Equipment Class: (7) Fluid-Operated Valves

Equipment Description: 21 CAC NORM INLET

Project: CCNPP 2 SWEL

Location (Bldg, Elev, Room/Area): AUX, 27.00 ft, CAL-AB-310

Manufacturer/Model: _____

Instructions for Completing Checklist

This checklist may be used to document the results of the Seismic Walkdown of an item of equipment on the SWEL. The space below each of the following questions may be used to record the results of judgments and findings. Additional space is provided at the end of this checklist for documenting other comments.

Anchorage

- | | |
|--|----------------|
| 1. Is anchorage configuration verification required (i.e., is the item one of the 50% of SWEL items requiring such verification)? | No |
| 2. Is the anchorage free of bent, broken, missing or loose hardware? | Not Applicable |
| 3. Is the anchorage free of corrosion that is more than mild surface oxidation? | Not Applicable |
| 4. Is the anchorage free of visible cracks in the concrete near the anchors? | Not Applicable |
| 5. Is the anchorage configuration consistent with plant documentation? (Note: This question only applies if the item is one of the 50% for which an anchorage configuration verification is required.) | Not Applicable |
| 6. Based on the above anchorage evaluations, is the anchorage free of potentially adverse seismic conditions? | Yes |

ATTACHMENT 3
WALKDOWN CHECKLISTS

Status: Y N U

Seismic Walkdown Checklist (SWC)

Equipment ID No.: 2CV1581

Equipment Class: (7) Fluid-Operated Valves

Equipment Description: 21 CAC NORM INLET

Interaction Effects

7. Are soft targets free from impact by nearby equipment or structures? Yes

8. Are overhead equipment, distribution systems, ceiling tiles and lighting, and masonry block walls not likely to collapse onto the equipment? Yes

9. Do attached lines have adequate flexibility to avoid damage? Yes

Tubing in pipe's transverse direction may not have sufficient flexibility, need to look at piping ISO. Equivalent to 15" long 1/2" tube.

10/13/12 - Per Drawing 91575 the piping is supported approximately 3.5 feet away from the valve. Hence the valve displacement is judged to be small enough not to affect the tubing and the tubing's flexibility is adequate.

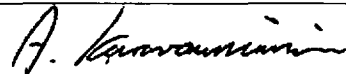
10. Based on the above seismic interaction evaluations, is equipment free of potentially adverse seismic interaction effects? Yes

Other Adverse Conditions

11. Have you looked for and found no adverse seismic conditions that could adversely affect the safety functions of the equipment? Yes

Comments

Evaluated by:



A. Karavoussianis

Date: 11/09/2012



C. Figliolini

11/09/2012

Photos

ATTACHMENT 3

WALKDOWN CHECKLISTS

Status: Y N U

Seismic Walkdown Checklist (SWC)

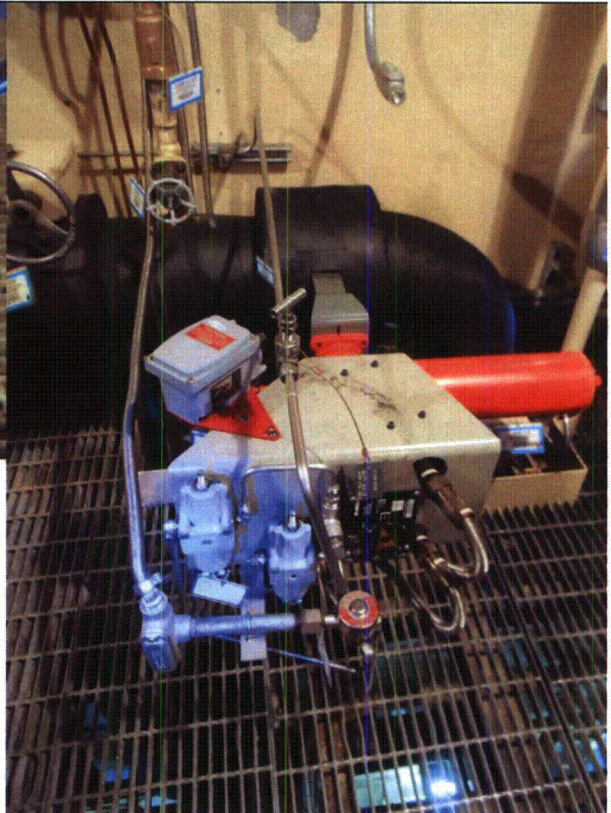
Equipment ID No.: 2CV1581

Equipment Class: (7) Fluid-Operated Valves

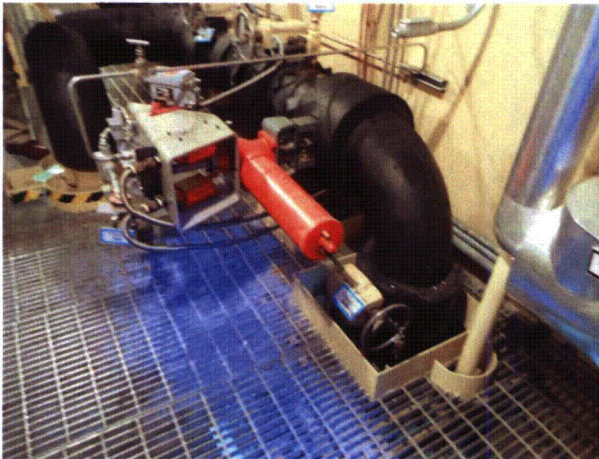
Equipment Description: 21 CAC NORM INLET



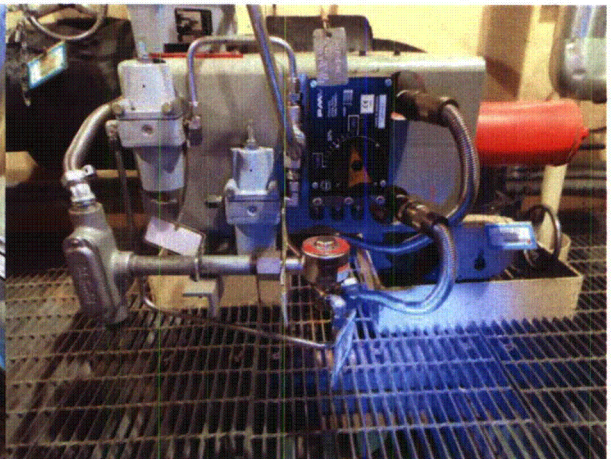
2CV1581 8-9-12 071



2CV1581 8-9-12 072



2CV1581 8-9-12 073



2CV1581 8-9-12 074

ATTACHMENT 3
WALKDOWN CHECKLISTS

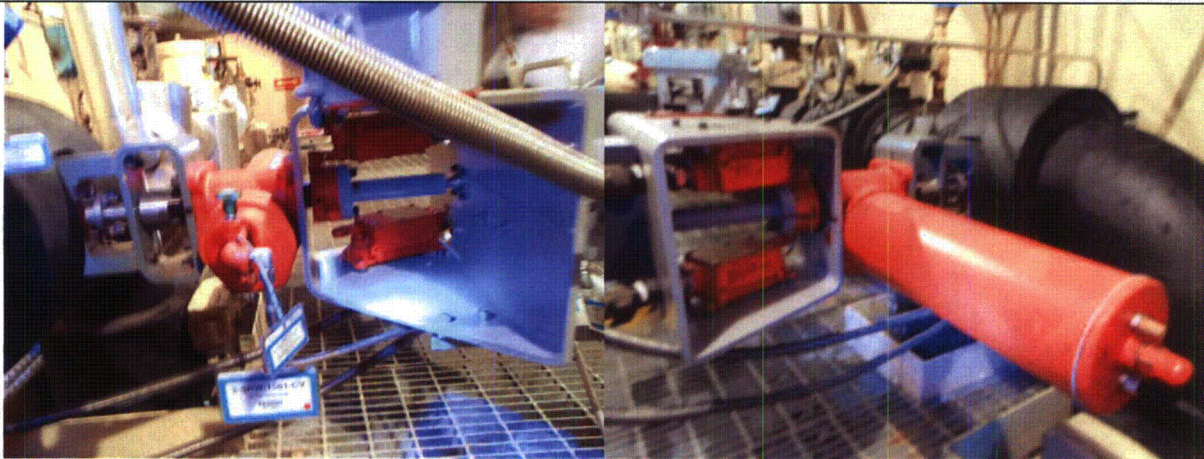
Status: Y N U

Seismic Walkdown Checklist (SWC)

Equipment ID No.: 2CV1581

Equipment Class: (7) Fluid-Operated Valves

Equipment Description: 21 CAC NORM INLET



2CV1581 8-9-12 075

2CV1581 8-9-12 076

ATTACHMENT 3
WALKDOWN CHECKLISTS

Status: Y N U

Seismic Walkdown Checklist (SWC)

Equipment ID No.: 2CV1588OP

Equipment Class: (7) Fluid-Operated Valves

Equipment Description: 2A DG SRW SUPP VLV OP

Project: CCNPP 2 SWEL

Location (Bldg, Elev, Room/Area): AUX, 45.00 ft, CAL-AB-422

Manufacturer/Model: _____

Instructions for Completing Checklist

This checklist may be used to document the results of the Seismic Walkdown of an item of equipment on the SWEL. The space below each of the following questions may be used to record the results of judgments and findings. Additional space is provided at the end of this checklist for documenting other comments.

Anchorage

1. Is anchorage configuration verification required (i.e., is the item one of the 50% of SWEL items requiring such verification)? No

2. Is the anchorage free of bent, broken, missing or loose hardware? Not Applicable

3. Is the anchorage free of corrosion that is more than mild surface oxidation? Not Applicable

4. Is the anchorage free of visible cracks in the concrete near the anchors? Not Applicable

5. Is the anchorage configuration consistent with plant documentation? (Note: This question only applies if the item is one of the 50% for which an anchorage configuration verification is required.) Not Applicable

6. Based on the above anchorage evaluations, is the anchorage free of potentially adverse seismic conditions? Yes

ATTACHMENT 3
WALKDOWN CHECKLISTS

Status: Y N U

Seismic Walkdown Checklist (SWC)

Equipment ID No.: 2CV1588OP

Equipment Class: (7) Fluid-Operated Valves

Equipment Description: 2A DG SRW SUPP VLV OP

Interaction Effects

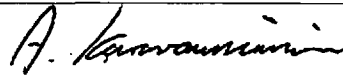
7. Are soft targets free from impact by nearby equipment or structures? Yes
Masonry block walls, identified as A19 and A24 on drawing A-259, are safety-related and thus seismically rated per IE Bulletin 80-11.
8. Are overhead equipment, distribution systems, ceiling tiles and lighting, and masonry block walls not likely to collapse onto the equipment? Yes
*Overhead light, if not 2/1, may fall and strike operator tubing.
10/3/12 - Overhead lights were deemed not a credible seismic concern due to their lightweight and to typical construction practices. Also, they have been previously evaluated by CCNPP and found seismically acceptable.*
9. Do attached lines have adequate flexibility to avoid damage? Yes
10. Based on the above seismic interaction evaluations, is equipment free of potentially adverse seismic interaction effects? Yes
-

Other Adverse Conditions

11. Have you looked for and found no adverse seismic conditions that could adversely affect the safety functions of the equipment? Yes
-

Comments

Evaluated by:



A. Karavoussianis

Date: 11/09/2012



C. Figliolini

11/09/2012

Photos

ATTACHMENT 3

WALKDOWN CHECKLISTS

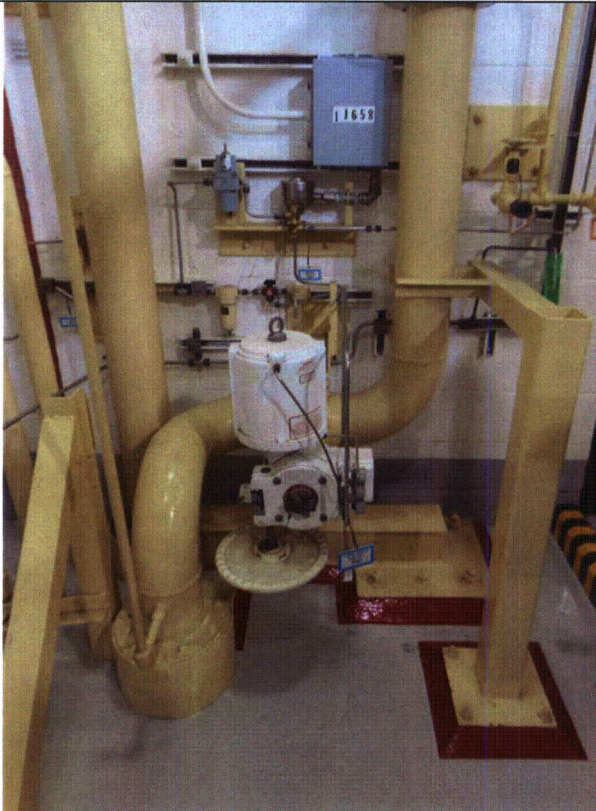
Status: Y N U

Seismic Walkdown Checklist (SWC)

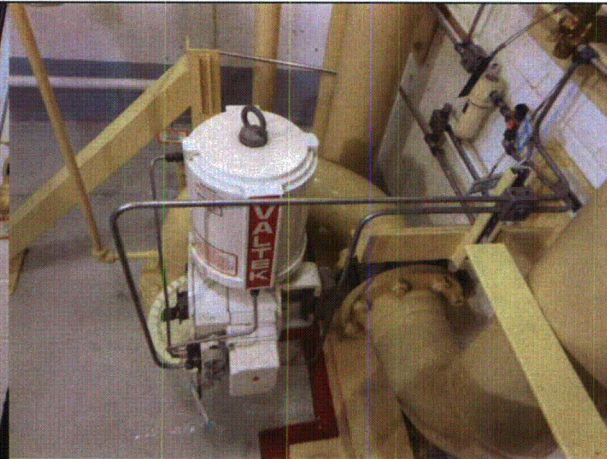
Equipment ID No.: 2CV1588OP

Equipment Class: (7) Fluid-Operated Valves

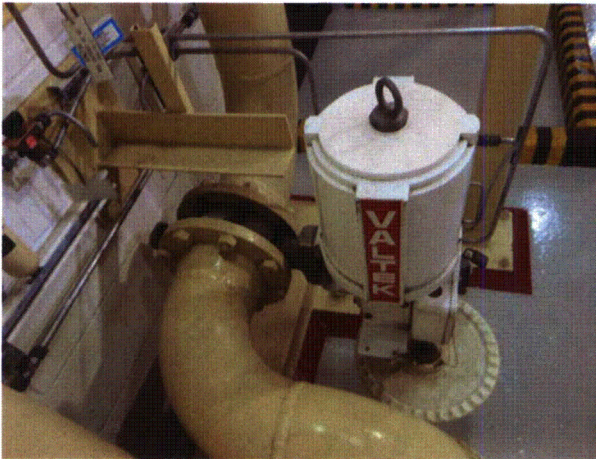
Equipment Description: 2A DG SRW SUPP VLV OP



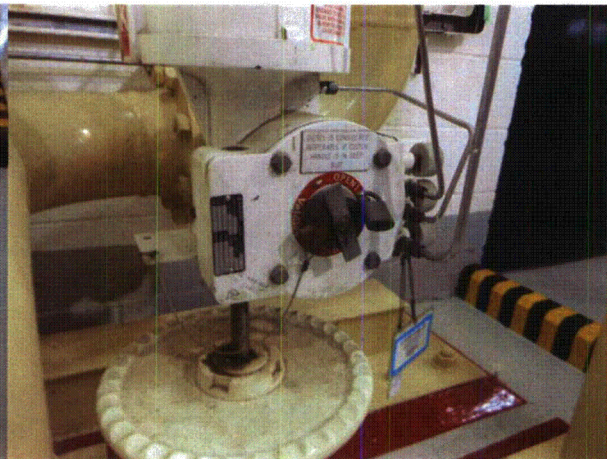
2CV1588OP 8-13-12 199



2CV1588OP 8-13-12 200



2CV1588OP 8-13-12 201



2CV1588OP 8-13-12 202

ATTACHMENT 3
WALKDOWN CHECKLISTS

Status: Y N U

Seismic Walkdown Checklist (SWC)

Equipment ID No.: 2CV1637

Equipment Class: (7) Fluid-Operated Valves

Equipment Description: TB SRW HDR 21 ISOL

Project: CCNPP 2 SWEL

Location (Bldg, Elev, Room/Area): AUX, 5.00 ft, CAL-AB-205

Manufacturer/Model: _____

Instructions for Completing Checklist

This checklist may be used to document the results of the Seismic Walkdown of an item of equipment on the SWEL. The space below each of the following questions may be used to record the results of judgments and findings. Additional space is provided at the end of this checklist for documenting other comments.

Anchorage

1. Is anchorage configuration verification required (i.e., is the item one of the 50% of SWEL items requiring such verification)? No

2. Is the anchorage free of bent, broken, missing or loose hardware? Not Applicable

3. Is the anchorage free of corrosion that is more than mild surface oxidation? Not Applicable

4. Is the anchorage free of visible cracks in the concrete near the anchors? Not Applicable

5. Is the anchorage configuration consistent with plant documentation? (Note: This question only applies if the item is one of the 50% for which an anchorage configuration verification is required.) Not Applicable

6. Based on the above anchorage evaluations, is the anchorage free of potentially adverse seismic conditions? Yes

ATTACHMENT 3
WALKDOWN CHECKLISTS

Status: Y N U

Seismic Walkdown Checklist (SWC)

Equipment ID No.: 2CV1637

Equipment Class: (7) Fluid-Operated Valves

Equipment Description: TB SRW HDR 21 ISOL

Interaction Effects

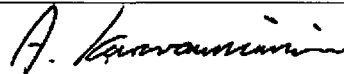
7. Are soft targets free from impact by nearby equipment or structures? Yes
8. Are overhead equipment, distribution systems, ceiling tiles and lighting, and masonry block walls not likely to collapse onto the equipment? Yes
9. Do attached lines have adequate flexibility to avoid damage? Yes
- Tubing between two valves (1637 and 1638) is supported at center by a stanchion anchored to the ceiling. The valves are on a common pipe running to HXs that are supported on floor. Differential motion between floor and ceiling is judged to be small and will not affect tubing. Tubing is judged to have adequate flexibility.*
10. Based on the above seismic interaction evaluations, is equipment free of potentially adverse seismic interaction effects? Yes
-

Other Adverse Conditions

11. Have you looked for and found no adverse seismic conditions that could adversely affect the safety functions of the equipment? Yes
-

Comments

Evaluated by:



A. Karavoussianis

Date: 11/09/2012



C. Figliolini

11/09/2012

Photos

ATTACHMENT 3

WALKDOWN CHECKLISTS

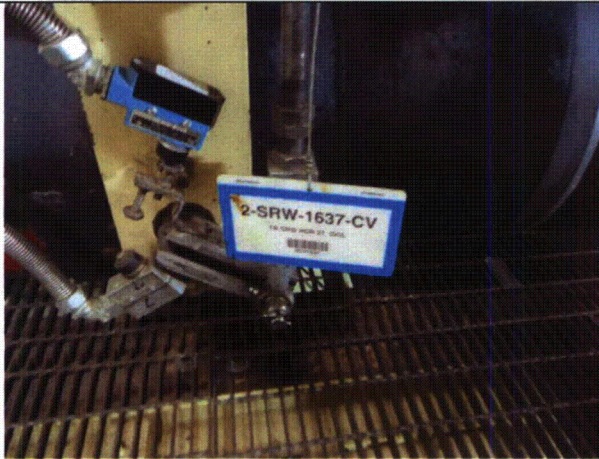
Status: Y N U

Seismic Walkdown Checklist (SWC)

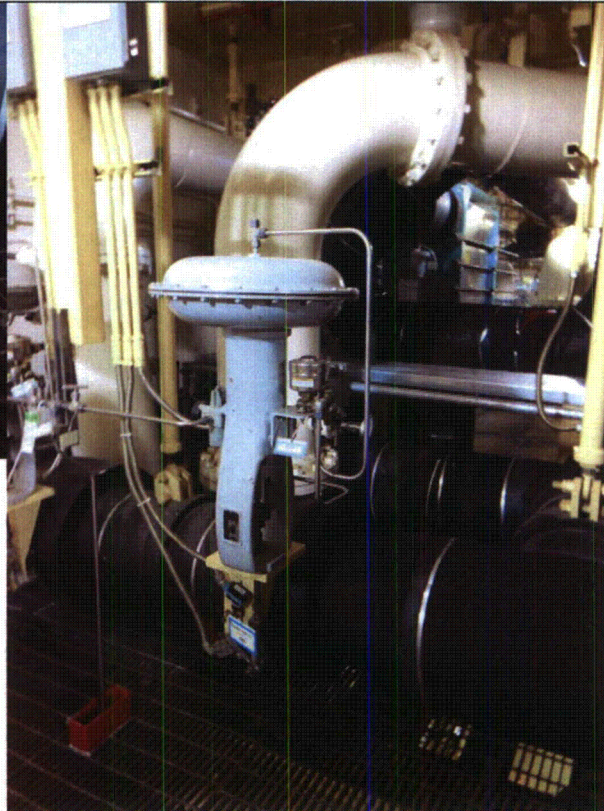
Equipment ID No.: 2CV1637

Equipment Class: (7) Fluid-Operated Valves

Equipment Description: TB SRW HDR 21 ISOL



2CV1637 8-6-12 280



2CV1637 8-6-12 281

ATTACHMENT 3
WALKDOWN CHECKLISTS

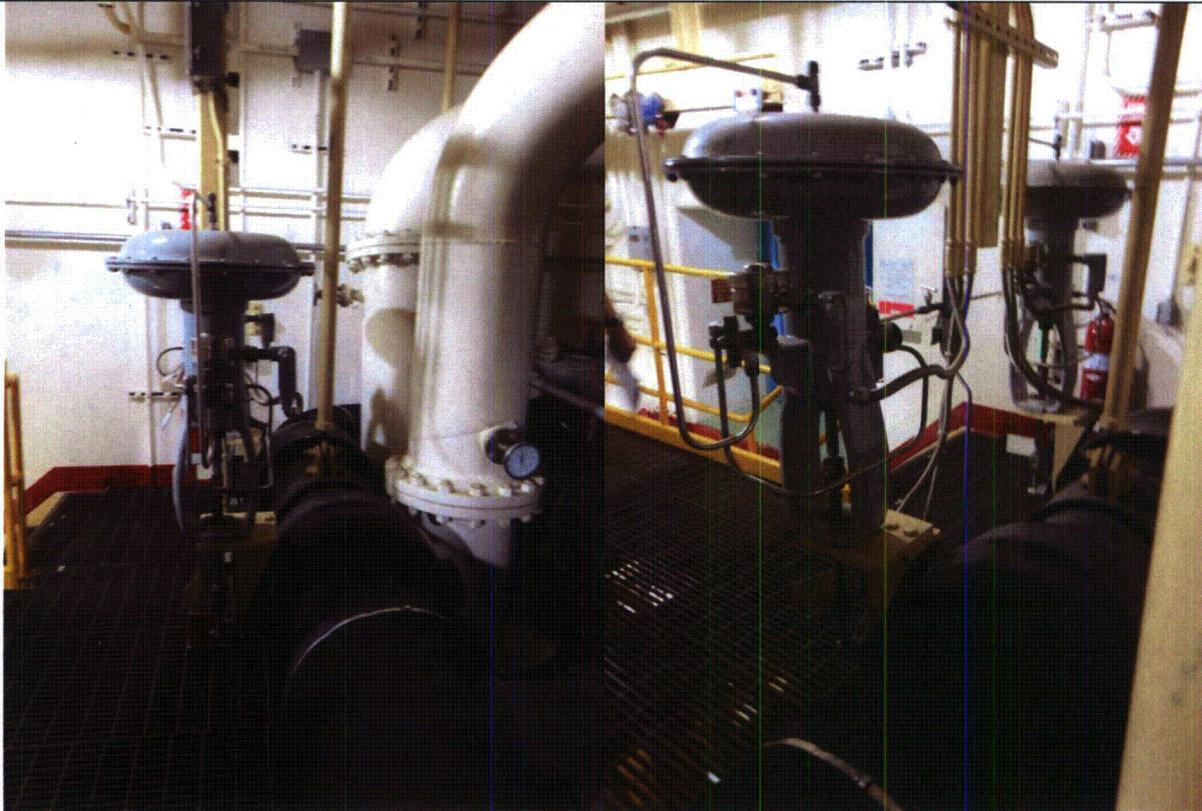
Status: Y N U

Seismic Walkdown Checklist (SWC)

Equipment ID No.: 2CV1637

Equipment Class: (7) Fluid-Operated Valves

Equipment Description: TB SRW HDR 21 ISOL



2CV1637 8-6-12 282

2CV1637 8-6-12 283

ATTACHMENT 3
WALKDOWN CHECKLISTS

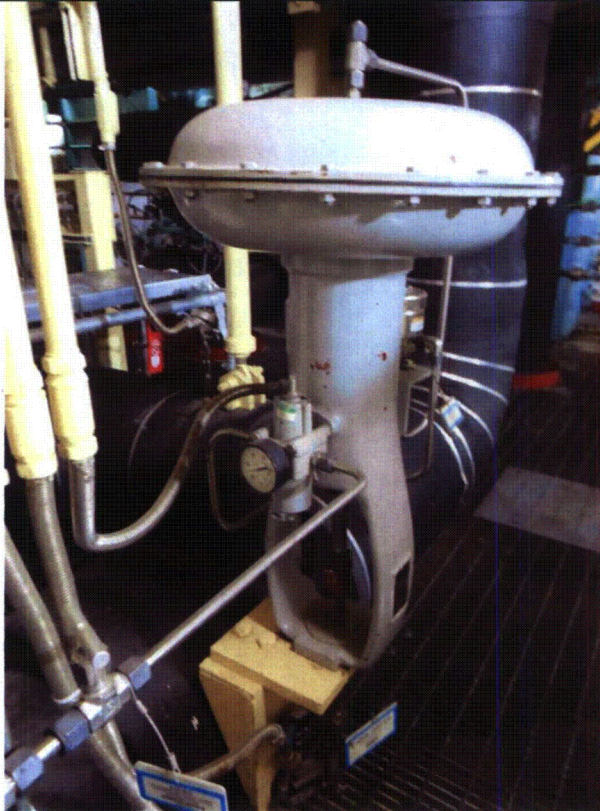
Status: Y N U

Seismic Walkdown Checklist (SWC)

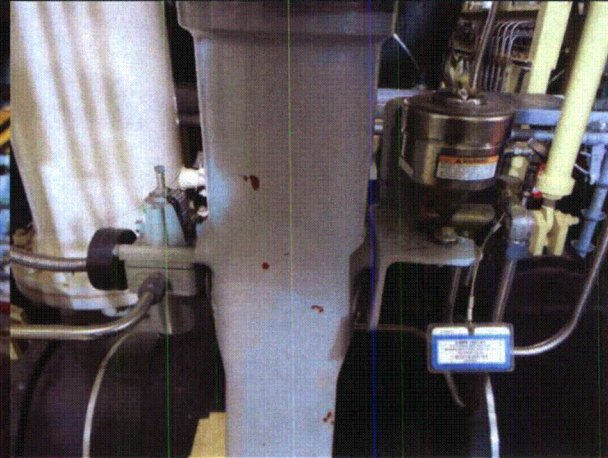
Equipment ID No.: 2CV1637

Equipment Class: (7) Fluid-Operated Valves

Equipment Description: TB SRW HDR 21 ISOL



2CV1637 8-6-12 284



2CV1637 8-6-12 285

ATTACHMENT 3
WALKDOWN CHECKLISTS

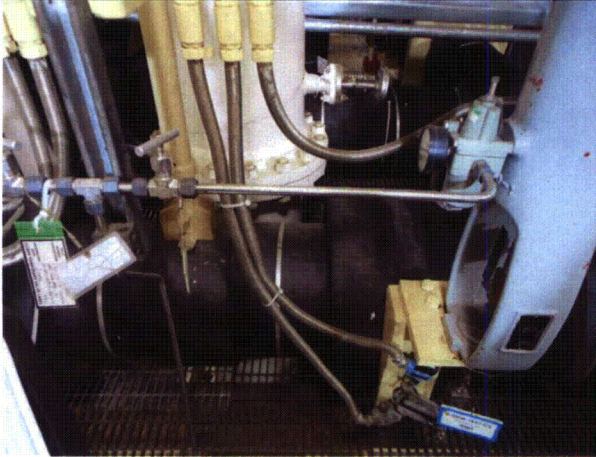
Status: Y N U

Seismic Walkdown Checklist (SWC)

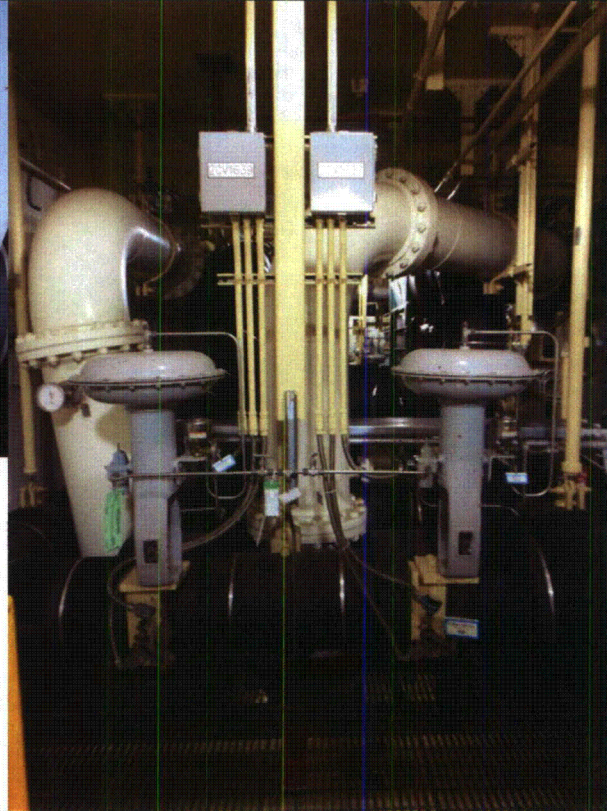
Equipment ID No.: 2CV1637

Equipment Class: (7) Fluid-Operated Valves

Equipment Description: TB SRW HDR 21 ISOL



2CV1637 8-6-12 286



2CV1637 8-6-12 287

ATTACHMENT 3
WALKDOWN CHECKLISTS

Status: Y N U

Seismic Walkdown Checklist (SWC)

Equipment ID No.: 2CV4048

Equipment Class: (7) Fluid-Operated Valves

Equipment Description: 21 MSIV

Project: CCNPP 2 SWEL

Location (Bldg, Elev, Room/Area): AUX, 27.00 ft, CAL-AB-309

Manufacturer/Model: _____

Instructions for Completing Checklist

This checklist may be used to document the results of the Seismic Walkdown of an item of equipment on the SWEL. The space below each of the following questions may be used to record the results of judgments and findings. Additional space is provided at the end of this checklist for documenting other comments.

Anchorage

1. Is anchorage configuration verification required (i.e., is the item one of the 50% of SWEL items requiring such verification)? No

2. Is the anchorage free of bent, broken, missing or loose hardware? Not Applicable

3. Is the anchorage free of corrosion that is more than mild surface oxidation? Not Applicable

4. Is the anchorage free of visible cracks in the concrete near the anchors? Not Applicable

5. Is the anchorage configuration consistent with plant documentation? (Note: This question only applies if the item is one of the 50% for which an anchorage configuration verification is required.) Not Applicable

6. Based on the above anchorage evaluations, is the anchorage free of potentially adverse seismic conditions? Yes

**ATTACHMENT 3
WALKDOWN CHECKLISTS**

Status: Y N U

Seismic Walkdown Checklist (SWC)

Equipment ID No.: 2CV4048

Equipment Class: (7) Fluid-Operated Valves

Equipment Description: 21 MSIV

Interaction Effects

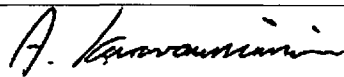
7. Are soft targets free from impact by nearby equipment or structures? Yes
8. Are overhead equipment, distribution systems, ceiling tiles and lighting, and masonry block walls not likely to collapse onto the equipment? Yes
Ductwork support is 1/2" from valve, ductwork is also laterally supported on other side (nearby) therefore judged not to be a seismic concern.
9. Do attached lines have adequate flexibility to avoid damage? Yes
*Hydraulic line insulation is in contact with hand rail. Line has adequate flexibility, therefore it is judged not to be a seismic concern.
Flex conduit is in contact with platform and the conduit's JB is supported on platform, therefore it is judged not to be a seismic concern.*
10. Based on the above seismic interaction evaluations, is equipment free of potentially adverse seismic interaction effects? Yes
-

Other Adverse Conditions

11. Have you looked for and found no adverse seismic conditions that could adversely affect the safety functions of the equipment? Yes
-

Comments

Evaluated by:



A. Karavoussianis

Date: 11/09/2012



C. Figliolini

11/09/2012

Photos

ATTACHMENT 3

WALKDOWN CHECKLISTS

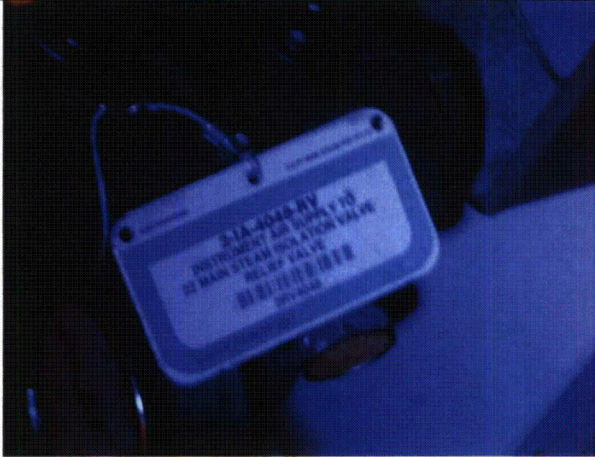
Status: Y N U

Seismic Walkdown Checklist (SWC)

Equipment ID No.: 2CV4048

Equipment Class: (7) Fluid-Operated Valves

Equipment Description: 21 MSIV



2CV4048 8-9-12 023



2CV4048 8-9-12 024

ATTACHMENT 3

WALKDOWN CHECKLISTS

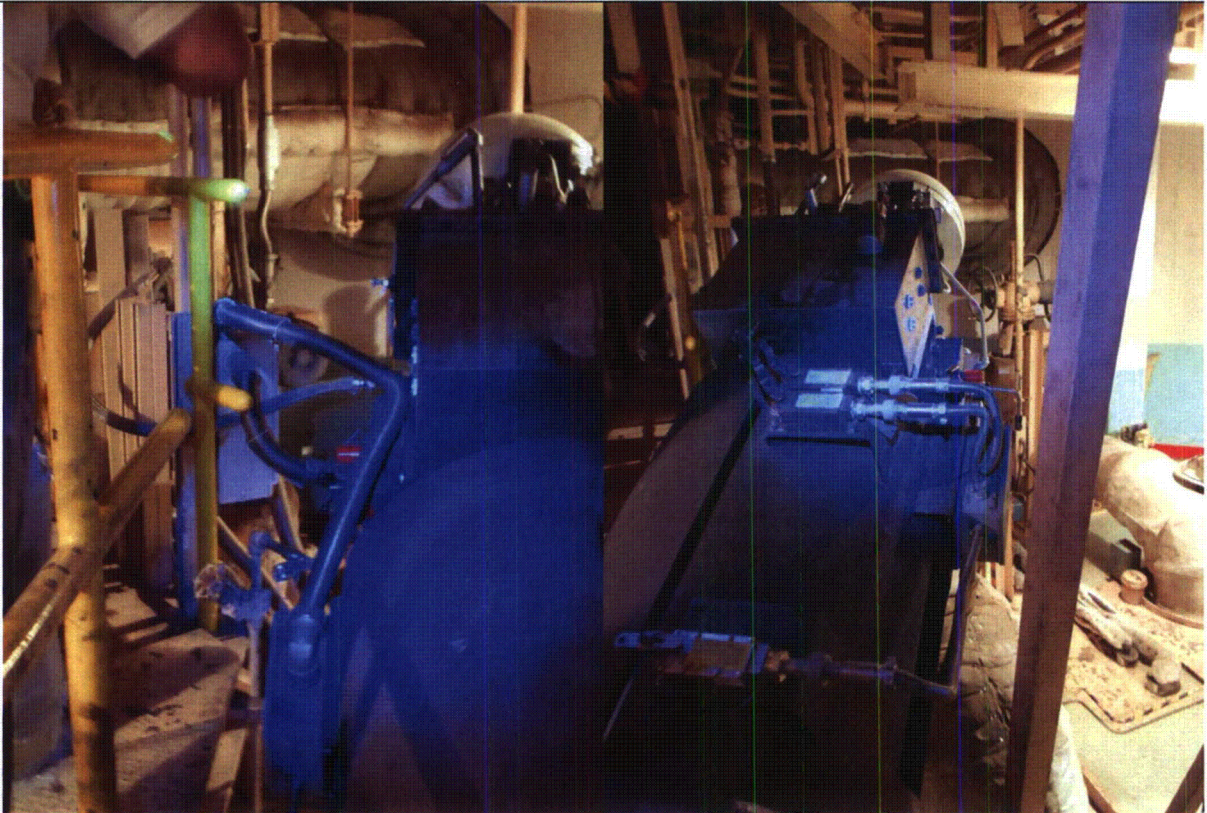
Status: Y N U

Seismic Walkdown Checklist (SWC)

Equipment ID No.: 2CV4048

Equipment Class: (7) Fluid-Operated Valves

Equipment Description: 21 MSIV



2CV4048 8-9-12 026

2CV4048 8-9-12 027

ATTACHMENT 3
WALKDOWN CHECKLISTS

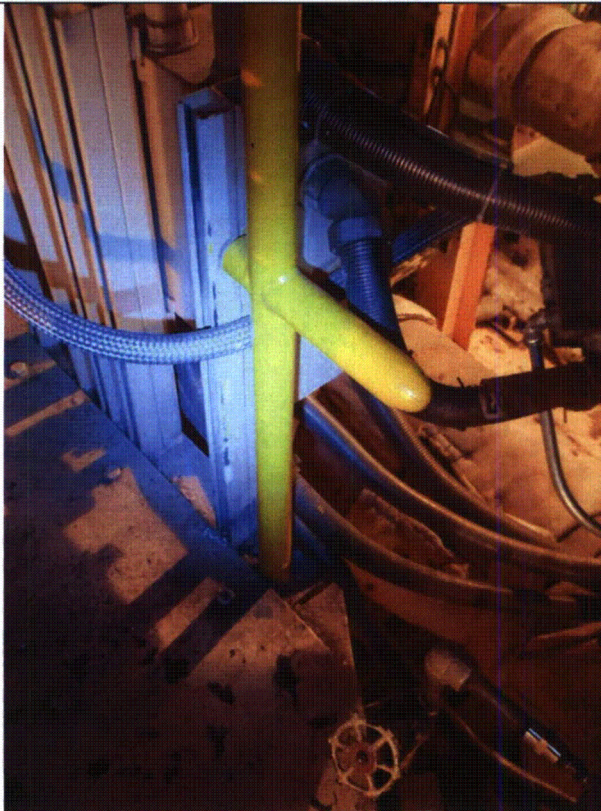
Status: Y N U

Seismic Walkdown Checklist (SWC)

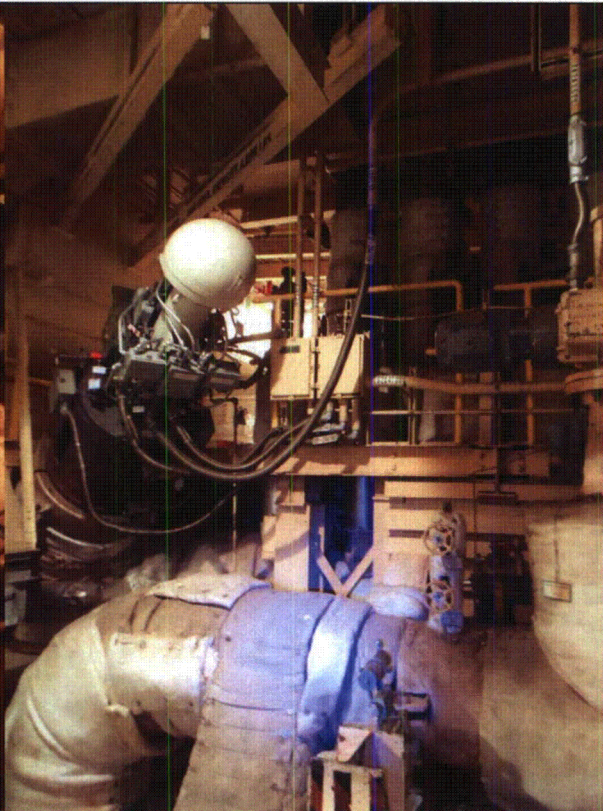
Equipment ID No.: 2CV4048

Equipment Class: (7) Fluid-Operated Valves

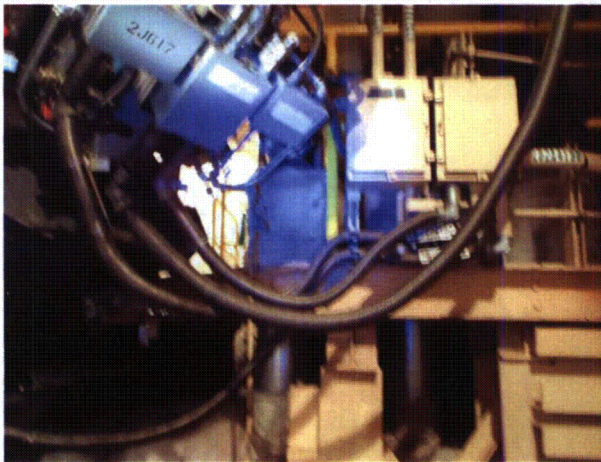
Equipment Description: 21 MSIV



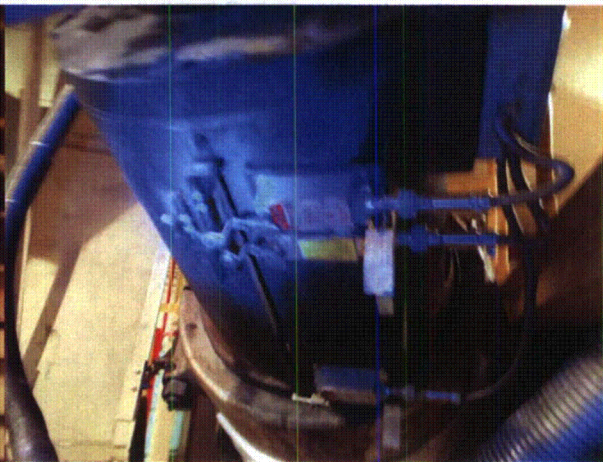
2CV4048 8-9-12 028



2CV4048 8-9-12 030



2CV4048 8-9-12 031



2CV4048 8-9-12 032

ATTACHMENT 3
WALKDOWN CHECKLISTS

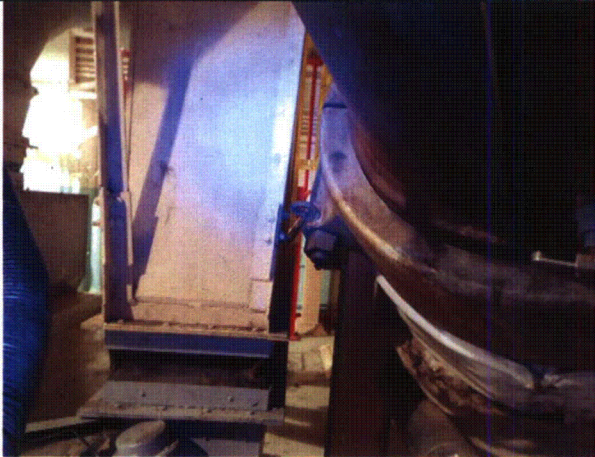
Status: Y N U

Seismic Walkdown Checklist (SWC)

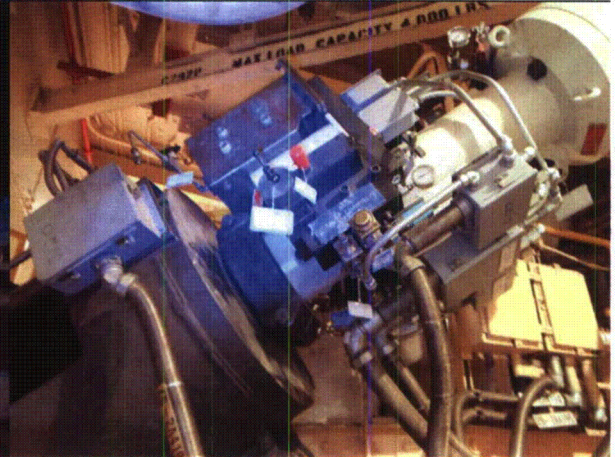
Equipment ID No.: 2CV4048

Equipment Class: (7) Fluid-Operated Valves

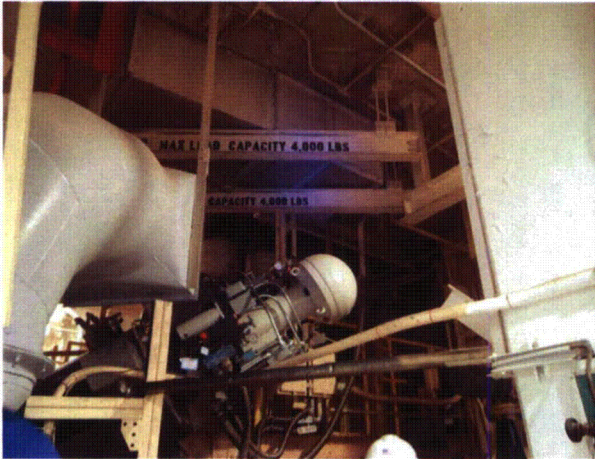
Equipment Description: 21 MSIV



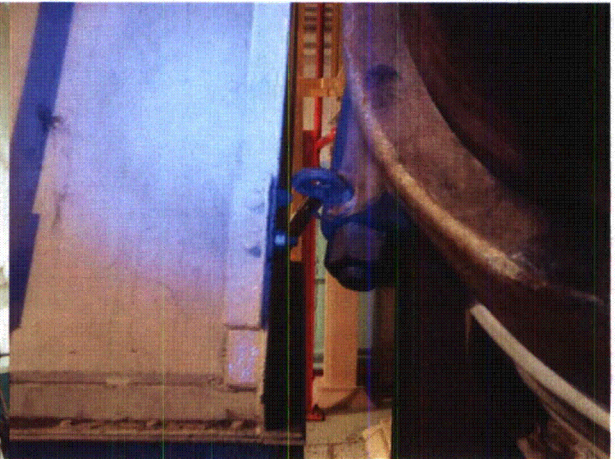
2CV4048 8-9-12 034



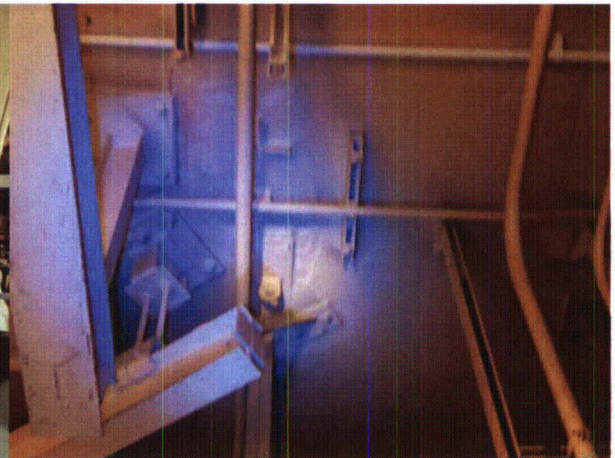
2CV4048 8-9-12 035



2CV4048 8-9-12 036



2CV4048 8-9-12 037



ATTACHMENT 3
WALKDOWN CHECKLISTS

Status: Y N U

Seismic Walkdown Checklist (SWC)

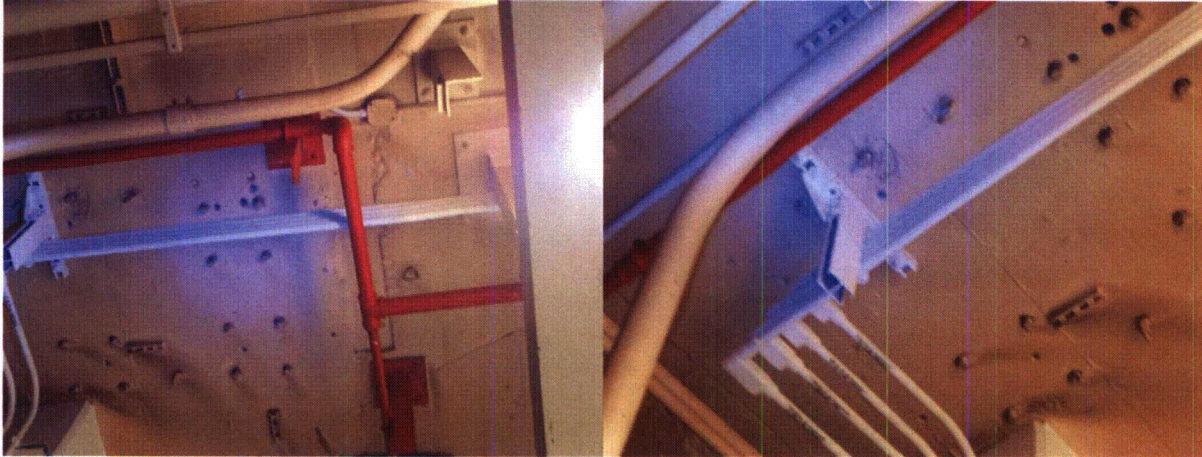
Equipment ID No.: 2CV4048

Equipment Class: (7) Fluid-Operated Valves

Equipment Description: 21 MSIV

2CV4048 8-9-12 038

2CV4048 8-9-12 039



2CV4048 8-9-12 041

2CV4048 8-9-12 043

ATTACHMENT 3
WALKDOWN CHECKLISTS

Status: Y N U

Seismic Walkdown Checklist (SWC)

Equipment ID No.: 2CV4070

Equipment Class: (7) Fluid-Operated Valves

Equipment Description: S/G 21 MS WITH HS IN AUTO TURB

Project: CCNPP 2 SWEL

Location (Bldg, Elev, Room/Area): AUX, 27.00 ft, CAL-AB-309

Manufacturer/Model: _____

Instructions for Completing Checklist

This checklist may be used to document the results of the Seismic Walkdown of an item of equipment on the SWEL. The space below each of the following questions may be used to record the results of judgments and findings. Additional space is provided at the end of this checklist for documenting other comments.

Anchorage

1. Is anchorage configuration verification required (i.e., is the item one of the 50% of SWEL items requiring such verification)? No

2. Is the anchorage free of bent, broken, missing or loose hardware? Not Applicable

3. Is the anchorage free of corrosion that is more than mild surface oxidation? Not Applicable

4. Is the anchorage free of visible cracks in the concrete near the anchors? Not Applicable

5. Is the anchorage configuration consistent with plant documentation? (Note: This question only applies if the item is one of the 50% for which an anchorage configuration verification is required.) Not Applicable

6. Based on the above anchorage evaluations, is the anchorage free of potentially adverse seismic conditions? Yes
Tubing support approximately 5' from valve
Valve 1/2" from steel pipe well supported in subject direction
Floor crack, dented jacket on floor piping

ATTACHMENT 3
WALKDOWN CHECKLISTS

Status: Y N U

Seismic Walkdown Checklist (SWC)

Equipment ID No.: 2CV4070

Equipment Class: (7) Fluid-Operated Valves

Equipment Description: S/G 21 MS WITH HS IN AUTO TURB

Interaction Effects

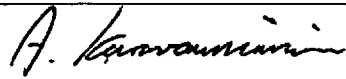
7. Are soft targets free from impact by nearby equipment or structures? Yes
There is a 1/2" gap between the valve and nearby steel, the pipe is adequately supported in the subject direction, judged not to be a seismic hazard.
8. Are overhead equipment, distribution systems, ceiling tiles and lighting, and masonry block walls not likely to collapse onto the equipment? Yes
9. Do attached lines have adequate flexibility to avoid damage? Yes
Tubing is supported 5' from valve and is judged to have adequate flexibility.
10. Based on the above seismic interaction evaluations, is equipment free of potentially adverse seismic interaction effects? Yes
-

Other Adverse Conditions

11. Have you looked for and found no adverse seismic conditions that could adversely affect the safety functions of the equipment? Yes
-

Comments

Evaluated by:



A. Karavoussianis

Date: 11/09/2012



C. Figliolini

11/09/2012

Photos

ATTACHMENT 3
WALKDOWN CHECKLISTS

Status: Y N U

Seismic Walkdown Checklist (SWC)

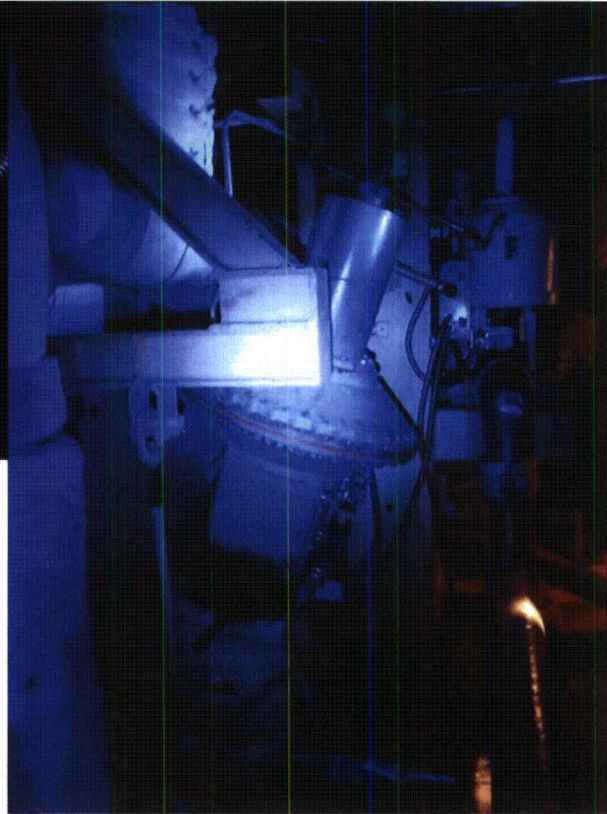
Equipment ID No.: 2CV4070

Equipment Class: (7) Fluid-Operated Valves

Equipment Description: S/G 21 MS WITH HS IN AUTO TURB



2CV4070 8-9-12 044



2CV4070 8-9-12 045

ATTACHMENT 3
WALKDOWN CHECKLISTS

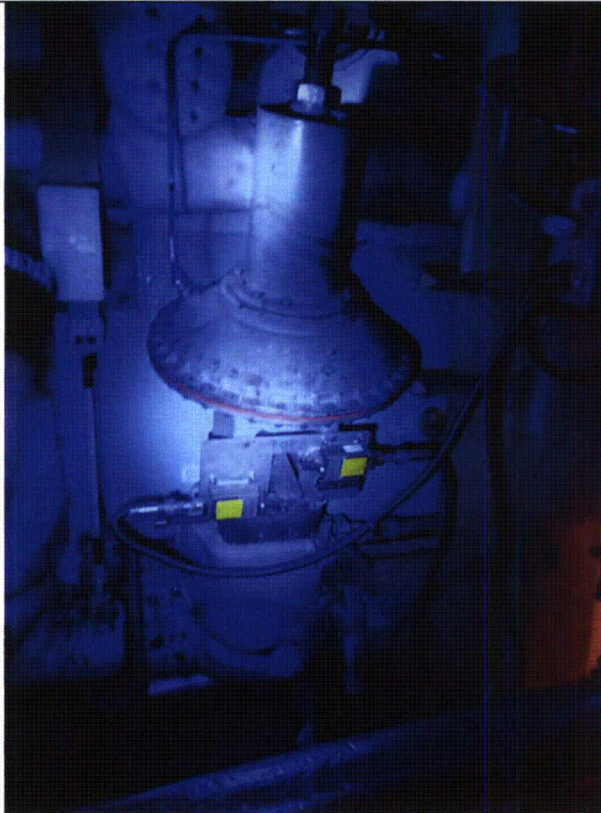
Status: Y N U

Seismic Walkdown Checklist (SWC)

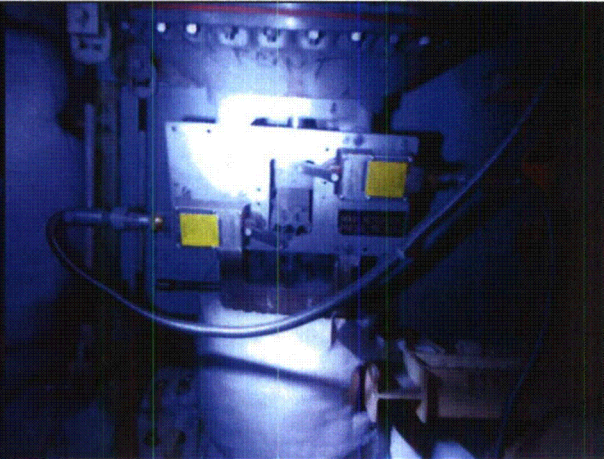
Equipment ID No.: 2CV4070

Equipment Class: (7) Fluid-Operated Valves

Equipment Description: S/G 21 MS WITH HS IN AUTO TURB



2CV4070 8-9-12 046



2CV4070 8-9-12 047

ATTACHMENT 3
WALKDOWN CHECKLISTS

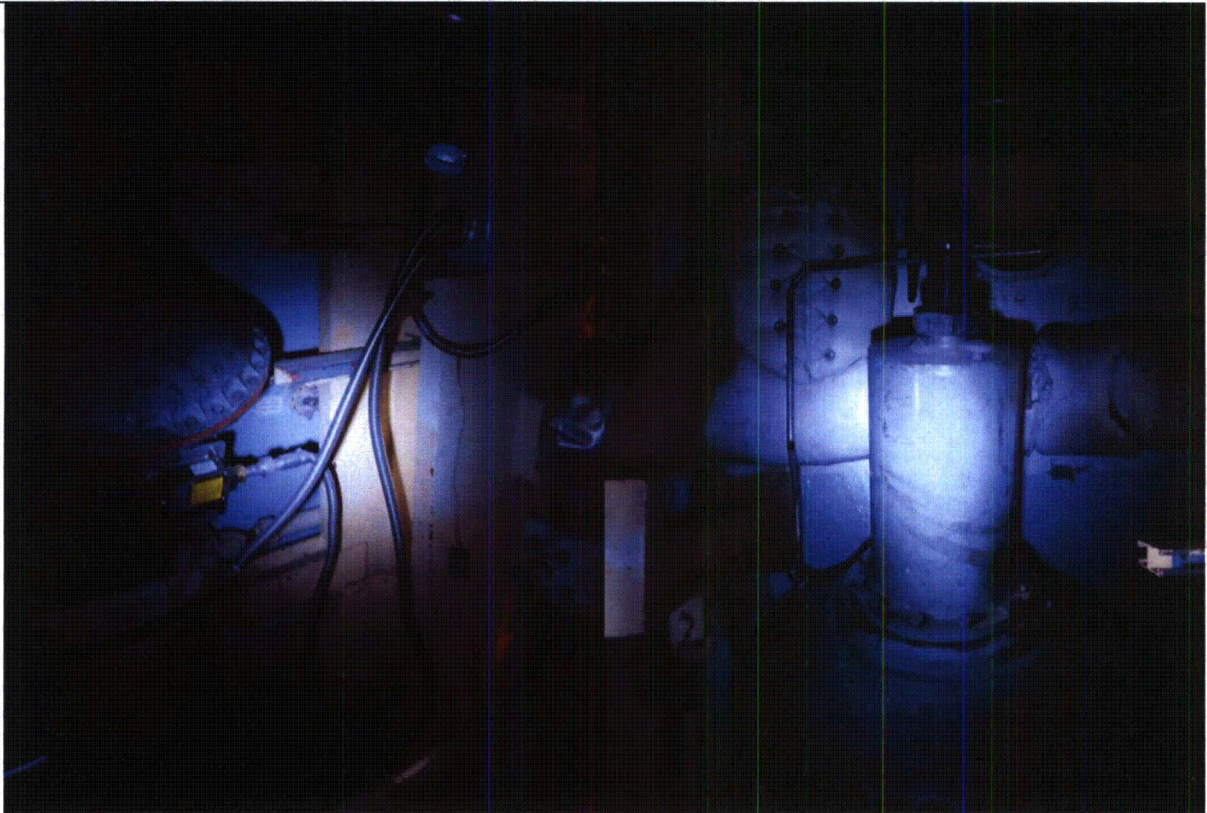
Status: Y N U

Seismic Walkdown Checklist (SWC)

Equipment ID No.: 2CV4070

Equipment Class: (7) Fluid-Operated Valves

Equipment Description: S/G 21 MS WITH HS IN AUTO TURB



2CV4070 8-9-12 048

2CV4070 8-9-12 049

ATTACHMENT 3
WALKDOWN CHECKLISTS

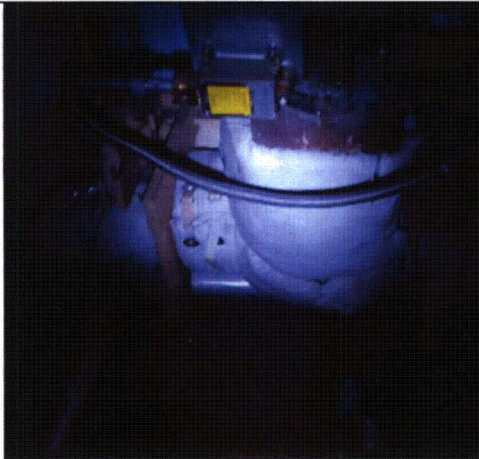
Status: Y N U

Seismic Walkdown Checklist (SWC)

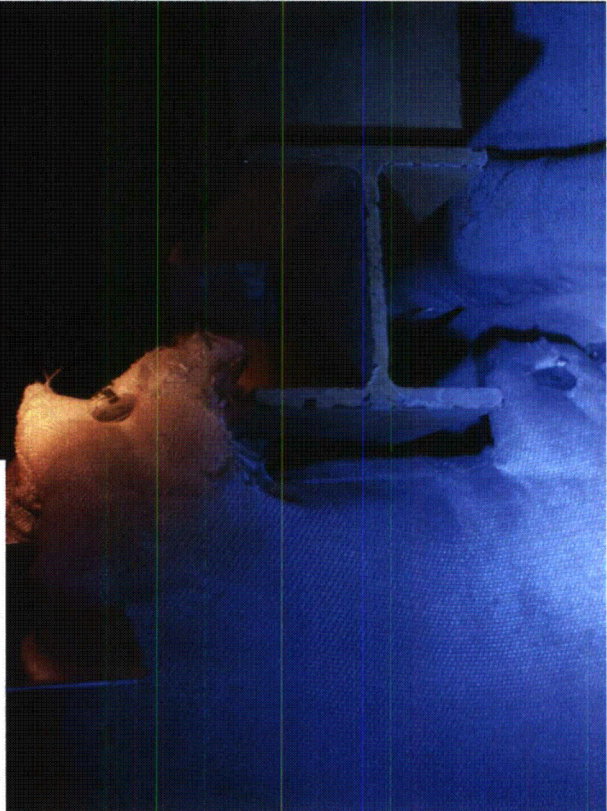
Equipment ID No.: 2CV4070

Equipment Class: (7) Fluid-Operated Valves

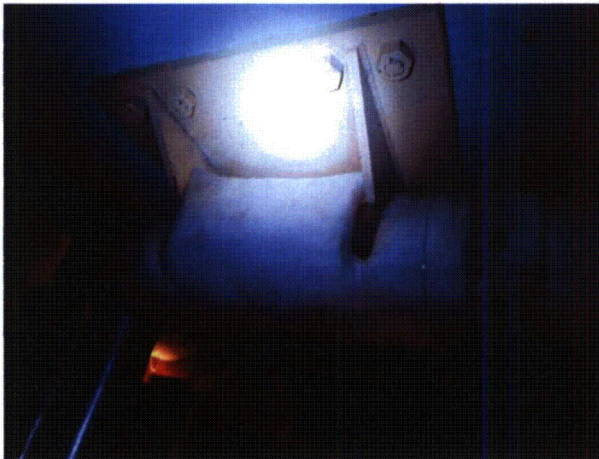
Equipment Description: S/G 21 MS WITH HS IN AUTO TURB



2CV4070 8-9-12 050



2CV4070 8-9-12 051



2CV4070 8-9-12 052



2CV4070 8-9-12 054

ATTACHMENT 3
WALKDOWN CHECKLISTS

Status: Y N U

Seismic Walkdown Checklist (SWC)

Equipment ID No.: 2CV4070A

Equipment Class: (7) Fluid-Operated Valves

Equipment Description: MS 2-CV-4070 BYPASS CV

Project: CCNPP 2 SWEL

Location (Bldg, Elev, Room/Area): AUX, 27.00 ft, CAL-AB-309

Manufacturer/Model: _____

Instructions for Completing Checklist

This checklist may be used to document the results of the Seismic Walkdown of an item of equipment on the SWEL. The space below each of the following questions may be used to record the results of judgments and findings. Additional space is provided at the end of this checklist for documenting other comments.

Anchorage

1. Is anchorage configuration verification required (i.e., is the item one of the 50% of SWEL items requiring such verification)? No

2. Is the anchorage free of bent, broken, missing or loose hardware? Not Applicable

3. Is the anchorage free of corrosion that is more than mild surface oxidation? Not Applicable

4. Is the anchorage free of visible cracks in the concrete near the anchors? Not Applicable

5. Is the anchorage configuration consistent with plant documentation? (Note: This question only applies if the item is one of the 50% for which an anchorage configuration verification is required.) Not Applicable

6. Based on the above anchorage evaluations, is the anchorage free of potentially adverse seismic conditions? Yes

ATTACHMENT 3
WALKDOWN CHECKLISTS

Status: Y N U

Seismic Walkdown Checklist (SWC)

Equipment ID No.: 2CV4070A

Equipment Class: (7) Fluid-Operated Valves

Equipment Description: MS 2-CV-4070 BYPASS CV

Interaction Effects

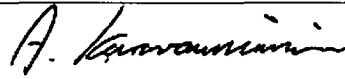
7. Are soft targets free from impact by nearby equipment or structures? Yes
8. Are overhead equipment, distribution systems, ceiling tiles and lighting, and masonry block walls not likely to collapse onto the equipment? Yes
9. Do attached lines have adequate flexibility to avoid damage? Yes
Valve and piping are well supported near to each other.
10. Based on the above seismic interaction evaluations, is equipment free of potentially adverse seismic interaction effects? Yes
-

Other Adverse Conditions

11. Have you looked for and found no adverse seismic conditions that could adversely affect the safety functions of the equipment? Yes
-

Comments

Evaluated by:



A. Karavoussianis

Date: 11/09/2012



C. Figliolini

11/09/2012

Photos

ATTACHMENT 3
WALKDOWN CHECKLISTS

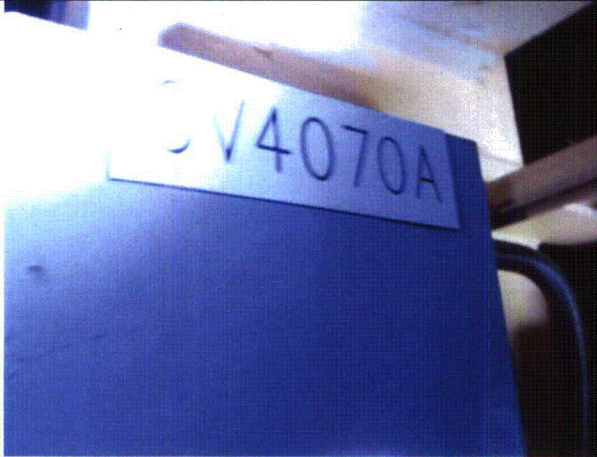
Status: Y N U

Seismic Walkdown Checklist (SWC)

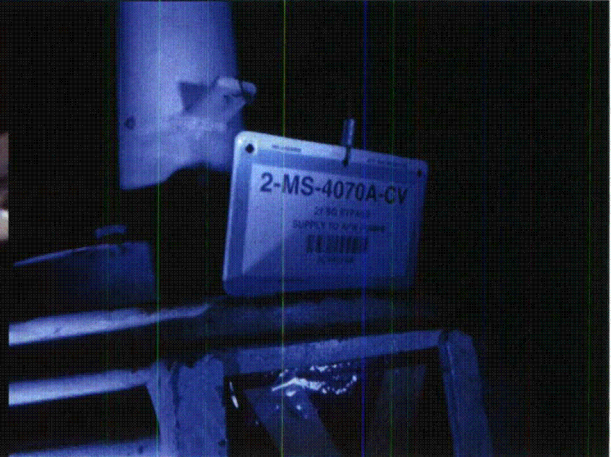
Equipment ID No.: 2CV4070A

Equipment Class: (7) Fluid-Operated Valves

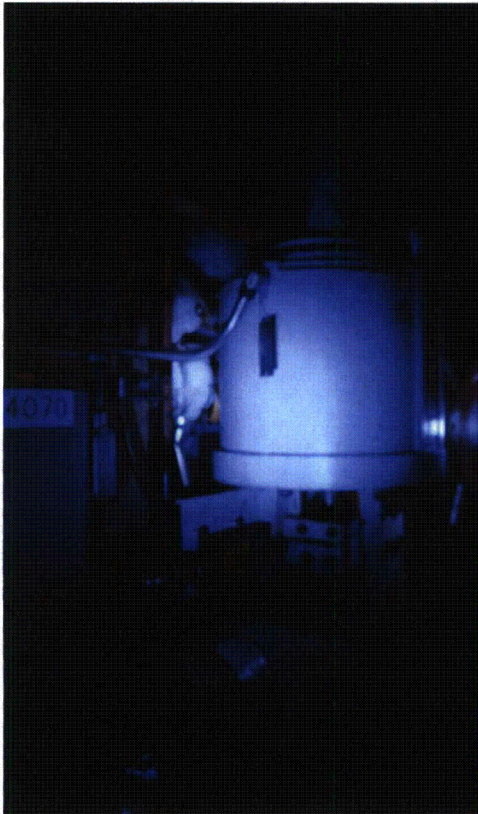
Equipment Description: MS 2-CV-4070 BYPASS CV



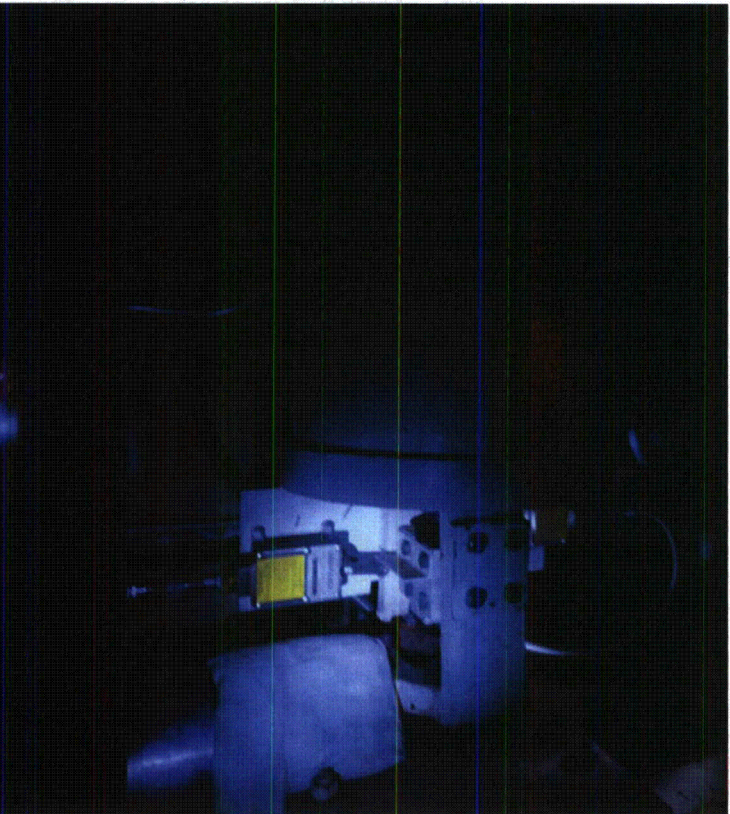
2CV4070A 8-9-12 055



2CV4070A 8-9-12 056



2CV4070A 8-9-12 057



2CV4070A 8-9-12 058

ATTACHMENT 3
WALKDOWN CHECKLISTS

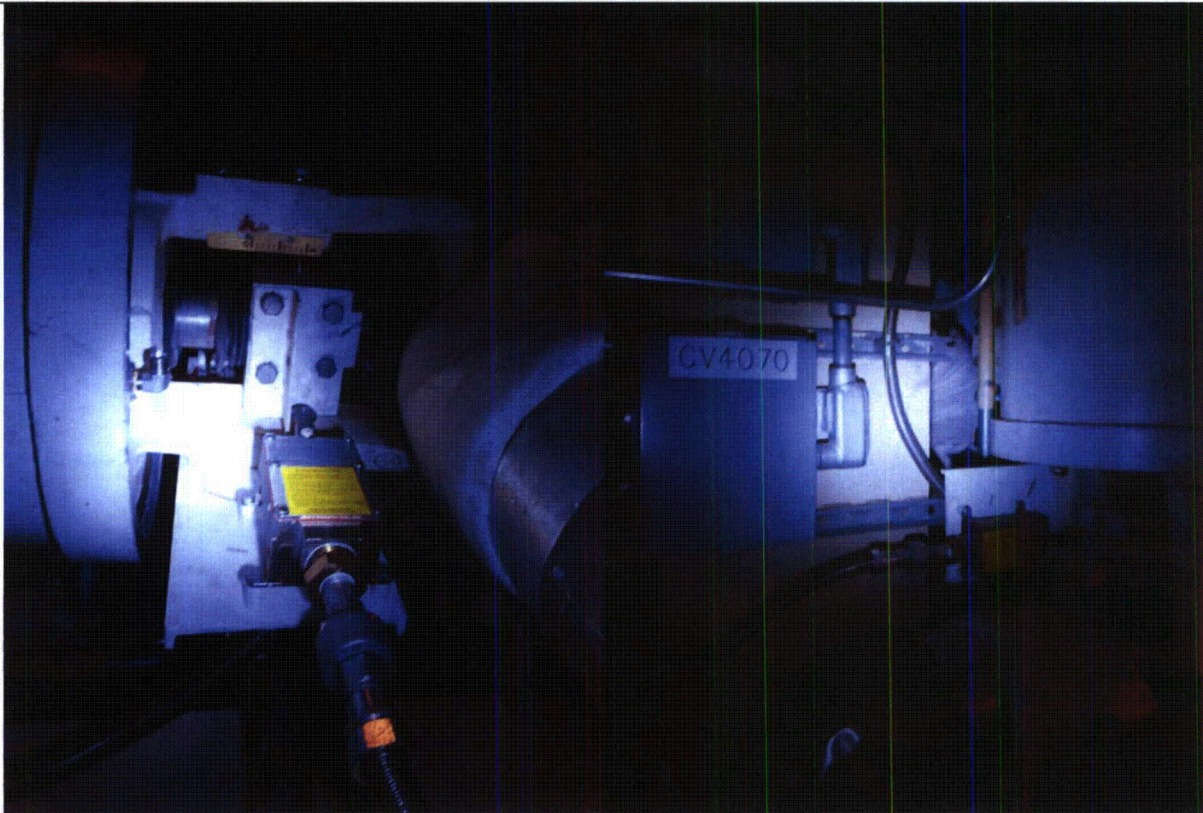
Status: Y N U

Seismic Walkdown Checklist (SWC)

Equipment ID No.: 2CV4070A

Equipment Class: (7) Fluid-Operated Valves

Equipment Description: MS 2-CV-4070 BYPASS CV



2CV4070A 8-9-12 059

2CV4070A 8-9-12 060

ATTACHMENT 3
WALKDOWN CHECKLISTS

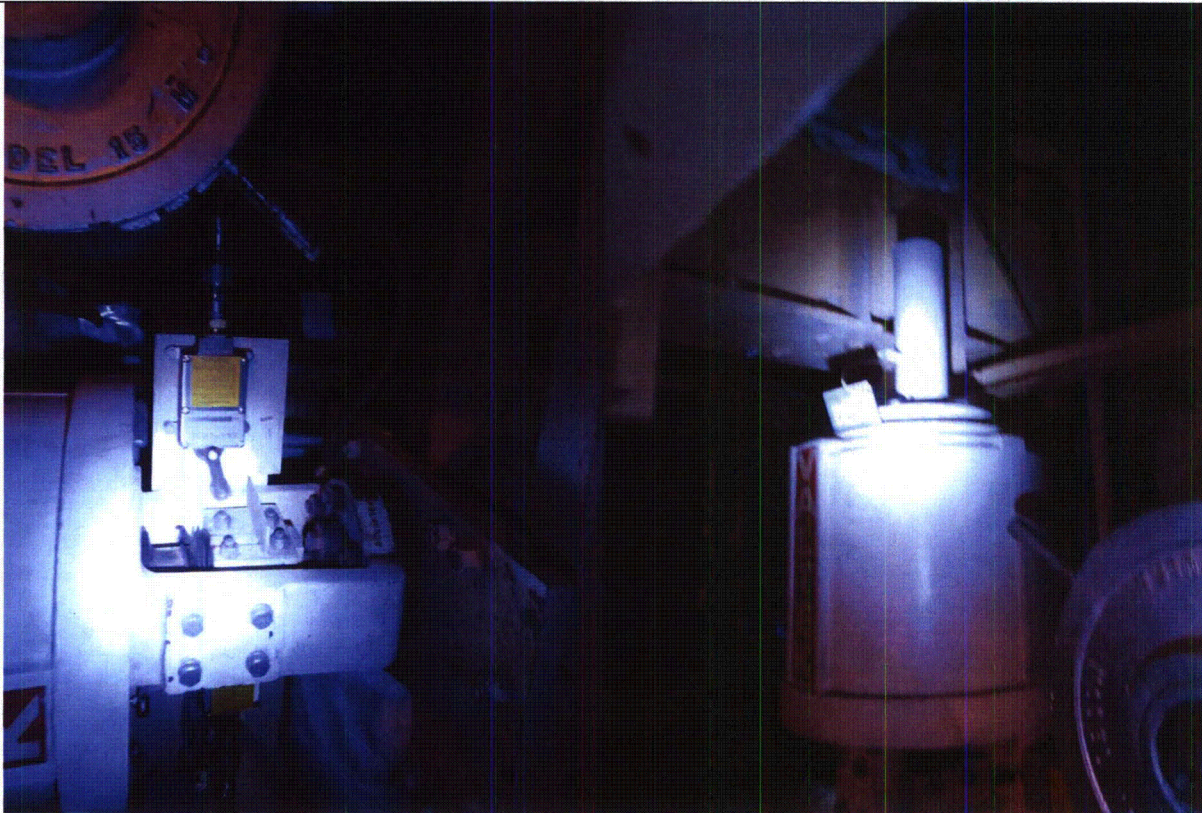
Status: Y N U

Seismic Walkdown Checklist (SWC)

Equipment ID No.: 2CV4070A

Equipment Class: (7) Fluid-Operated Valves

Equipment Description: MS 2-CV-4070 BYPASS CV



2CV4070A 8-9-12 061

2CV4070A 8-9-12 062

ATTACHMENT 3
WALKDOWN CHECKLISTS

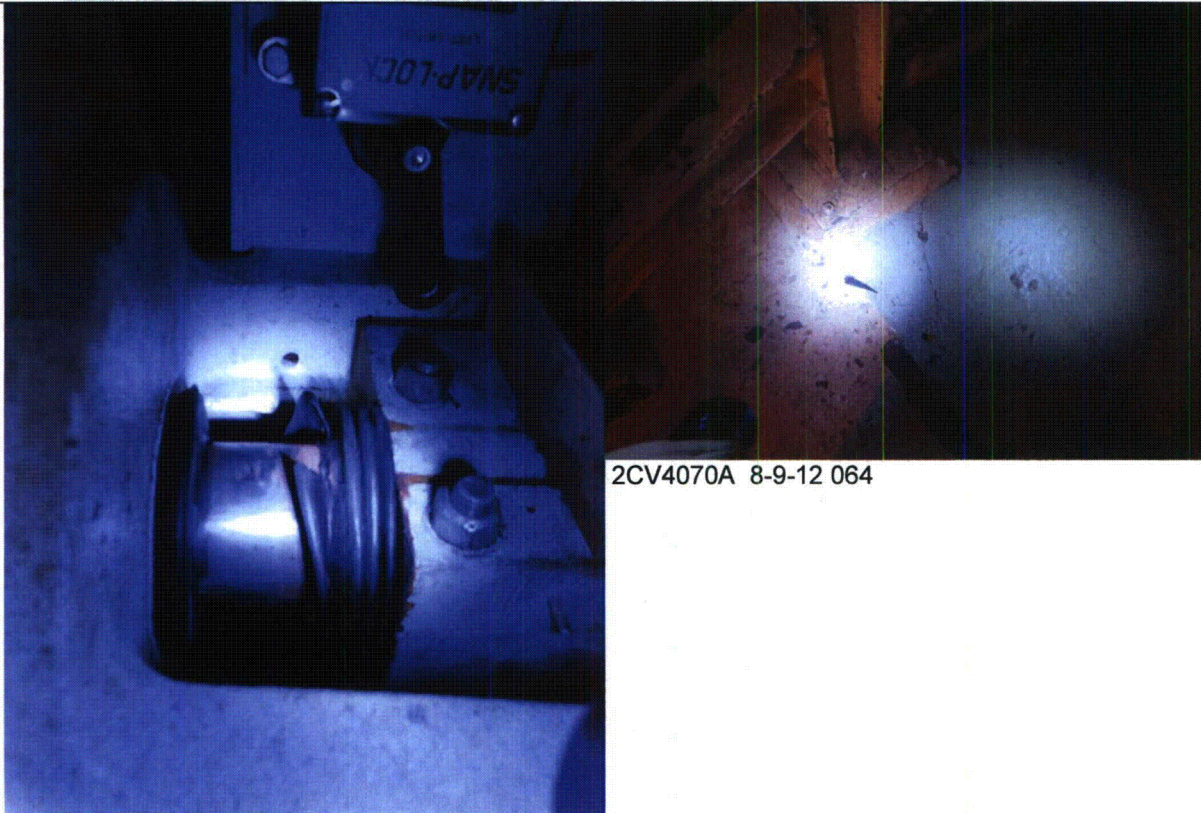
Status: Y N U

Seismic Walkdown Checklist (SWC)

Equipment ID No.: 2CV4070A

Equipment Class: (7) Fluid-Operated Valves

Equipment Description: MS 2-CV-4070 BYPASS CV



2CV4070A 8-9-12 064

2CV4070A 8-9-12 063

ATTACHMENT 3
WALKDOWN CHECKLISTS

Status: Y N U

Seismic Walkdown Checklist (SWC)

Equipment ID No.: 2CV4070AOP

Equipment Class: (7) Fluid-Operated Valves

Equipment Description: MS 2-CV-4070A VALVE OPERA

Project: CCNPP 2 SWEL

Location (Bldg, Elev, Room/Area): AUX, 27.00 ft, CAL-AB-309

Manufacturer/Model: _____

Instructions for Completing Checklist

This checklist may be used to document the results of the Seismic Walkdown of an item of equipment on the SWEL. The space below each of the following questions may be used to record the results of judgments and findings. Additional space is provided at the end of this checklist for documenting other comments.

Anchorage

1. Is anchorage configuration verification required (i.e., is the item one of the 50% of SWEL items requiring such verification)? No
This is the operator for valve 2CV4070A.

2. Is the anchorage free of bent, broken, missing or loose hardware? Not Applicable

3. Is the anchorage free of corrosion that is more than mild surface oxidation? Not Applicable

4. Is the anchorage free of visible cracks in the concrete near the anchors? Not Applicable

5. Is the anchorage configuration consistent with plant documentation? (Note: This question only applies if the item is one of the 50% for which an anchorage configuration verification is required.) Not Applicable

6. Based on the above anchorage evaluations, is the anchorage free of potentially adverse seismic conditions? Yes

ATTACHMENT 3
WALKDOWN CHECKLISTS

Status: Y N U

Seismic Walkdown Checklist (SWC)

Equipment ID No.: 2CV4070AOP

Equipment Class: (7) Fluid-Operated Valves

Equipment Description: MS 2-CV-4070A VALVE OPERA

Interaction Effects

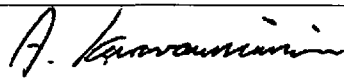
7. Are soft targets free from impact by nearby equipment or structures? Yes
8. Are overhead equipment, distribution systems, ceiling tiles and lighting, and masonry block walls not likely to collapse onto the equipment? Yes
9. Do attached lines have adequate flexibility to avoid damage? Yes
Valve and piping are well supported near each other.
10. Based on the above seismic interaction evaluations, is equipment free of potentially adverse seismic interaction effects? Yes
-

Other Adverse Conditions

11. Have you looked for and found no adverse seismic conditions that could adversely affect the safety functions of the equipment? Yes
-

Comments

Evaluated by:



A. Karavoussianis

Date: 11/09/2012



C. Figliolini

11/09/2012

Photos

ATTACHMENT 3
WALKDOWN CHECKLISTS

Status: Y N U

Seismic Walkdown Checklist (SWC)

Equipment ID No.: 2CV4070AOP

Equipment Class: (7) Fluid-Operated Valves

Equipment Description: MS 2-CV-4070A VALVE OPERA

Rule of Box

2CV4070AOP ROB

ATTACHMENT 3
WALKDOWN CHECKLISTS

Status: Y N U

Seismic Walkdown Checklist (SWC)

Equipment ID No.: 2CV40700P

Equipment Class: (7) Fluid-Operated Valves

Equipment Description: 21 MS SUPP STM TO AFW TUR

Project: CCNPP 2 SWEL

Location (Bldg, Elev, Room/Area): AUX, 27.00 ft, CAL-AB-309

Manufacturer/Model: _____

Instructions for Completing Checklist

This checklist may be used to document the results of the Seismic Walkdown of an item of equipment on the SWEL. The space below each of the following questions may be used to record the results of judgments and findings. Additional space is provided at the end of this checklist for documenting other comments.

Anchorage

1. Is anchorage configuration verification required (i.e., is the item one of the 50% of SWEL items requiring such verification)? No
This is the operator for valve 2CV4070.

2. Is the anchorage free of bent, broken, missing or loose hardware? Not Applicable

3. Is the anchorage free of corrosion that is more than mild surface oxidation? Not Applicable

4. Is the anchorage free of visible cracks in the concrete near the anchors? Not Applicable

5. Is the anchorage configuration consistent with plant documentation? (Note: This question only applies if the item is one of the 50% for which an anchorage configuration verification is required.) Not Applicable

6. Based on the above anchorage evaluations, is the anchorage free of potentially adverse seismic conditions? Yes
Tubing support approximately 5' from valve
Valve ½" from steel pipe well supported in subject direction
Floor crack, dented jacket on floor piping

**ATTACHMENT 3
WALKDOWN CHECKLISTS**

Status: Y N U

Seismic Walkdown Checklist (SWC)

Equipment ID No.: 2CV40700P

Equipment Class: (7) Fluid-Operated Valves

Equipment Description: 21 MS SUPP STM TO AFW TUR

Interaction Effects

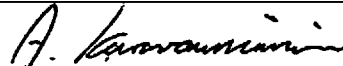
7. Are soft targets free from impact by nearby equipment or structures? Yes
There is a 1/2" gap between the valve and nearby steel, the pipe is adequately supported in the subject direction, o.k.
8. Are overhead equipment, distribution systems, ceiling tiles and lighting, and masonry block walls not likely to collapse onto the equipment? Yes
9. Do attached lines have adequate flexibility to avoid damage? Yes
Tubing is supported 5" from valve and is judged to have adequate flexibility.
10. Based on the above seismic interaction evaluations, is equipment free of potentially adverse seismic interaction effects? Yes
-

Other Adverse Conditions

11. Have you looked for and found no adverse seismic conditions that could adversely affect the safety functions of the equipment? Yes
-

Comments

Evaluated by:



A. Karavoussianis

Date: 11/09/2012



C. Figliolini

11/09/2012

Photos

ATTACHMENT 3
WALKDOWN CHECKLISTS

Status: Y N U

Seismic Walkdown Checklist (SWC)

Equipment ID No.: 2CV4070OP

Equipment Class: (7) Fluid-Operated Valves

Equipment Description: 21 MS SUPP STM TO AFW TUR

Rule of Box

2CV4070OP ROB

ATTACHMENT 3
WALKDOWN CHECKLISTS

Status: Y N U

Seismic Walkdown Checklist (SWC)

Equipment ID No.: 2CV5149OP

Equipment Class: (7) Fluid-Operated Valves

Equipment Description: 2 EMER SW DISCH TO BAY CV ACT

Project: CCNPP 2 SWEL

Location (Bldg, Elev, Room/Area): Intake, -7.00 ft, CAL-ISPR-INT2

Manufacturer/Model: _____

Instructions for Completing Checklist

This checklist may be used to document the results of the Seismic Walkdown of an item of equipment on the SWEL. The space below each of the following questions may be used to record the results of judgments and findings. Additional space is provided at the end of this checklist for documenting other comments.

Anchorage

1. Is anchorage configuration verification required (i.e., is the item one of the 50% of SWEL items requiring such verification)? No

2. Is the anchorage free of bent, broken, missing or loose hardware? Not Applicable

3. Is the anchorage free of corrosion that is more than mild surface oxidation? Not Applicable

4. Is the anchorage free of visible cracks in the concrete near the anchors? Not Applicable

5. Is the anchorage configuration consistent with plant documentation? (Note: This question only applies if the item is one of the 50% for which an anchorage configuration verification is required.) Not Applicable

6. Based on the above anchorage evaluations, is the anchorage free of potentially adverse seismic conditions? Yes

ATTACHMENT 3
WALKDOWN CHECKLISTS

Status: Y N U

Seismic Walkdown Checklist (SWC)

Equipment ID No.: 2CV5149OP

Equipment Class: (7) Fluid-Operated Valves

Equipment Description: 2 EMER SW DISCH TO BAY CV ACT

Interaction Effects

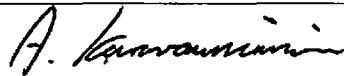
7. Are soft targets free from impact by nearby equipment or structures? Yes
- The valve and operator are approximately 1/4" from platform steel. The platform steel is well braced, and the very large diameter piping is anchored within approximately 30' from valve on each side. Therefore the differential motion between the platform and valve is judged not to exceed 1/4". Judged to be seismic adequate.*
8. Are overhead equipment, distribution systems, ceiling tiles and lighting, and masonry block walls not likely to collapse onto the equipment? Yes
9. Do attached lines have adequate flexibility to avoid damage? Yes
10. Based on the above seismic interaction evaluations, is equipment free of potentially adverse seismic interaction effects? Yes
-

Other Adverse Conditions

11. Have you looked for and found no adverse seismic conditions that could adversely affect the safety functions of the equipment? Yes
-

Comments

Evaluated by:



A. Karavoussianis

Date: 11/09/2012



C. Figliolini

11/09/2012

Photos

ATTACHMENT 3
WALKDOWN CHECKLISTS

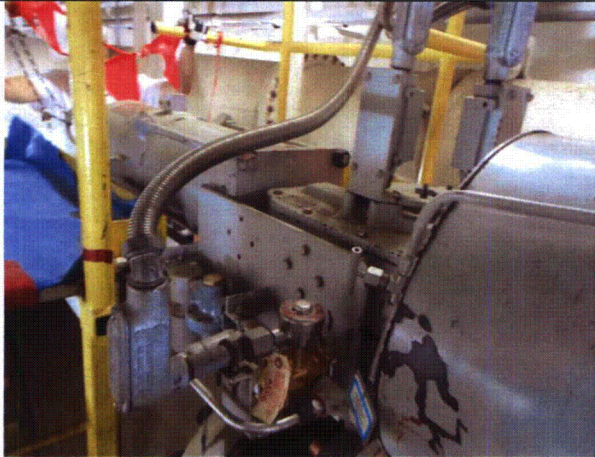
Status: Y N U

Seismic Walkdown Checklist (SWC)

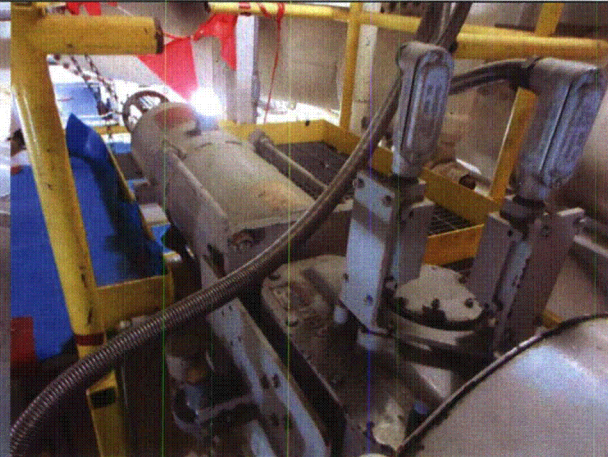
Equipment ID No.: 2CV5149OP

Equipment Class: (7) Fluid-Operated Valves

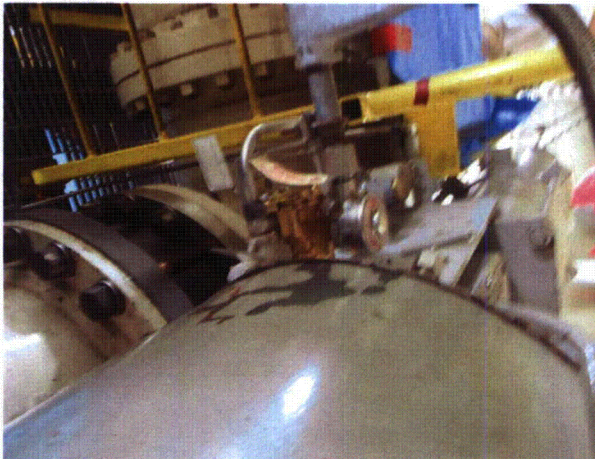
Equipment Description: 2 EMER SW DISCH TO BAY CV ACT



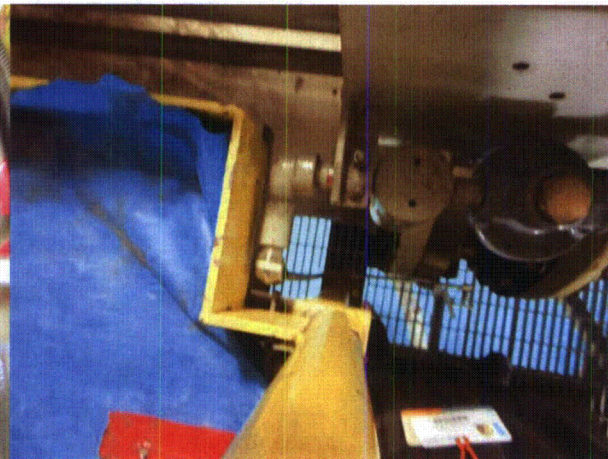
2CV5149OP 8-16-12 162



2CV5149OP 8-16-12 163



2CV5149OP 8-16-12 164



2CV5149OP 8-16-12 165

ATTACHMENT 3
WALKDOWN CHECKLISTS

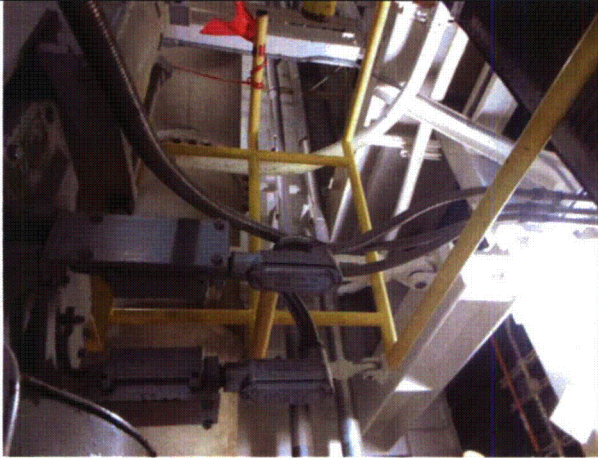
Status: Y N U

Seismic Walkdown Checklist (SWC)

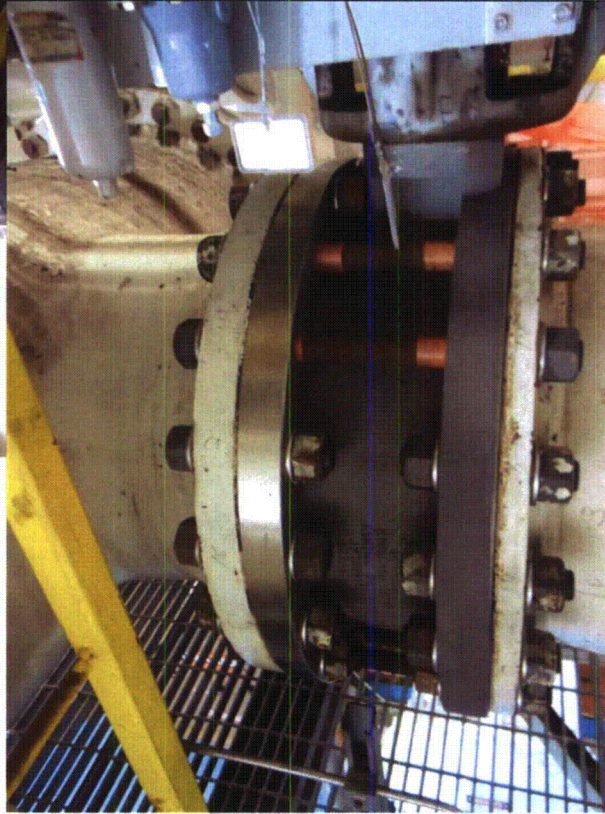
Equipment ID No.: 2CV5149OP

Equipment Class: (7) Fluid-Operated Valves

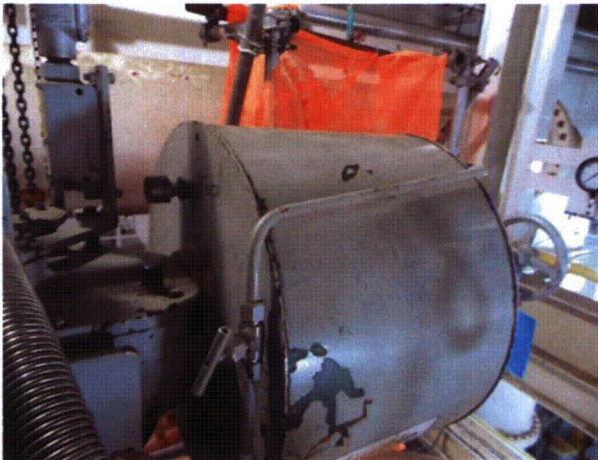
Equipment Description: 2 EMER SW DISCH TO BAY CV ACT



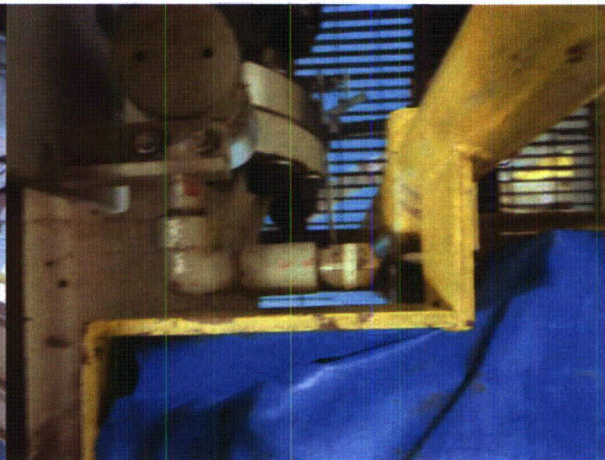
2CV5149OP 8-16-12 166



2CV5149OP 8-16-12 167



2CV5149OP 8-16-12 168



2CV5149OP 8-16-12 169

ATTACHMENT 3
WALKDOWN CHECKLISTS

Status: Y N U

Seismic Walkdown Checklist (SWC)

Equipment ID No.: 2CV5149OP

Equipment Class: (7) Fluid-Operated Valves

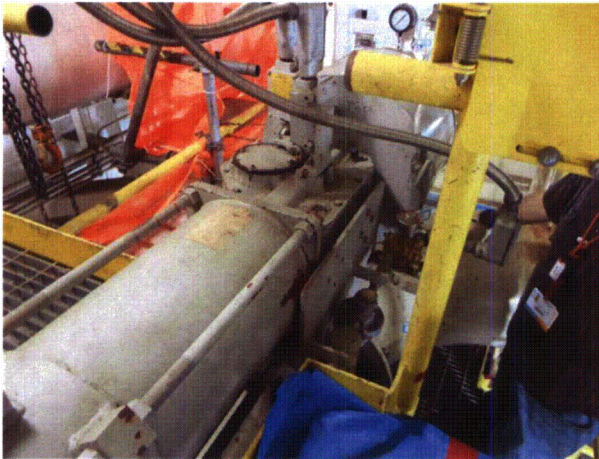
Equipment Description: 2 EMER SW DISCH TO BAY CV ACT



2CV5149OP 8-16-12 172



2CV5149OP 8-16-12 173



2CV5149OP 8-16-12 174

ATTACHMENT 3
WALKDOWN CHECKLISTS

Status: Y N U

Seismic Walkdown Checklist (SWC)

Equipment ID No.: 2CV5173

Equipment Class: (7) Fluid-Operated Valves

Equipment Description: ECCS PP RM AIR CLR 22 WTR IN

Project: CCNPP 2 SWEL

Location (Bldg, Elev, Room/Area): AUX, 5.00 ft, CAL-AB-201

Manufacturer/Model: _____

Instructions for Completing Checklist

This checklist may be used to document the results of the Seismic Walkdown of an item of equipment on the SWEL. The space below each of the following questions may be used to record the results of judgments and findings. Additional space is provided at the end of this checklist for documenting other comments.

Anchorage

1. Is anchorage configuration verification required (i.e., is the item one of the 50% of SWEL items requiring such verification)? No

2. Is the anchorage free of bent, broken, missing or loose hardware? Not Applicable

3. Is the anchorage free of corrosion that is more than mild surface oxidation? Not Applicable

4. Is the anchorage free of visible cracks in the concrete near the anchors? Not Applicable

5. Is the anchorage configuration consistent with plant documentation? (Note: This question only applies if the item is one of the 50% for which an anchorage configuration verification is required.) Not Applicable

6. Based on the above anchorage evaluations, is the anchorage free of potentially adverse seismic conditions? Yes

**ATTACHMENT 3
WALKDOWN CHECKLISTS**

Status: Y N U

Seismic Walkdown Checklist (SWC)

Equipment ID No.: 2CV5173

Equipment Class: (7) Fluid-Operated Valves

Equipment Description: ECCS PP RM AIR CLR 22 WTR IN

Interaction Effects

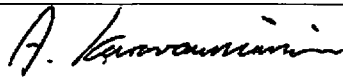
7. Are soft targets free from impact by nearby equipment or structures? Yes
8. Are overhead equipment, distribution systems, ceiling tiles and lighting, and masonry block walls not likely to collapse onto the equipment? Yes
9. Do attached lines have adequate flexibility to avoid damage? Yes
- Tubing supported on wall near the valve's pipe supports, therefore small differential motion is expected and the tubing judged to have adequate flexibility.*
10. Based on the above seismic interaction evaluations, is equipment free of potentially adverse seismic interaction effects? Yes
-

Other Adverse Conditions

11. Have you looked for and found no adverse seismic conditions that could adversely affect the safety functions of the equipment? Yes
-

Comments

Evaluated by:



A. Karavoussianis

Date: 11/09/2012



C. Figliolini

11/09/2012

Photos

ATTACHMENT 3

WALKDOWN CHECKLISTS

Status: Y N U

Seismic Walkdown Checklist (SWC)

Equipment ID No.: 2CV5173

Equipment Class: (7) Fluid-Operated Valves

Equipment Description: ECCS PP RM AIR CLR 22 WTR IN



2CV5173 8-7-12 079



2CV5173 8-7-12 080

ATTACHMENT 3
WALKDOWN CHECKLISTS

Status: Y N U

Seismic Walkdown Checklist (SWC)

Equipment ID No.: 2CV5173

Equipment Class: (7) Fluid-Operated Valves

Equipment Description: ECCS PP RM AIR CLR 22 WTR IN



2CV5173 8-7-12 081



2CV5173 8-7-12 082

ATTACHMENT 3
WALKDOWN CHECKLISTS

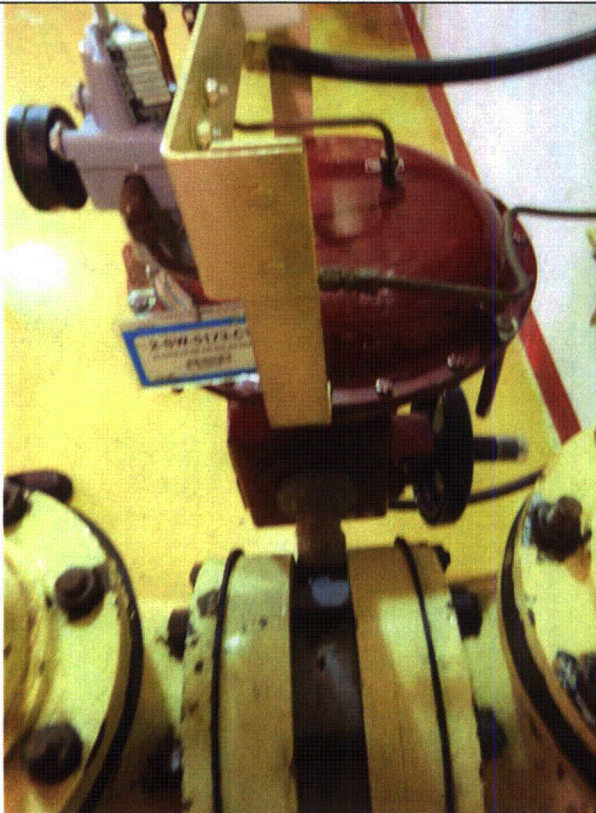
Status: Y N U

Seismic Walkdown Checklist (SWC)

Equipment ID No.: 2CV5173

Equipment Class: (7) Fluid-Operated Valves

Equipment Description: ECCS PP RM AIR CLR 22 WTR IN



2CV5173 8-7-12 083



2CV5173 8-7-12 085

ATTACHMENT 3
WALKDOWN CHECKLISTS

Status: Y N U

Seismic Walkdown Checklist (SWC)

Equipment ID No.: 2DAMP5426B

Equipment Class: (10) Air Handlers

Equipment Description: 21 U RECIRC AIR DMPR

Project: CCNPP 2 SWEL

Location (Bldg, Elev, Room/Area): AUX, 70.00 ft, CAL-AB-526

Manufacturer/Model: _____

Instructions for Completing Checklist

This checklist may be used to document the results of the Seismic Walkdown of an item of equipment on the SWEL. The space below each of the following questions may be used to record the results of judgments and findings. Additional space is provided at the end of this checklist for documenting other comments.

Anchorage

1. Is anchorage configuration verification required (i.e., is the item one of the 50% of SWEL items requiring such verification)? No
Damper is inline with 21SWGRHVAC.

2. Is the anchorage free of bent, broken, missing or loose hardware? Not Applicable

3. Is the anchorage free of corrosion that is more than mild surface oxidation? Not Applicable

4. Is the anchorage free of visible cracks in the concrete near the anchors? Not Applicable

5. Is the anchorage configuration consistent with plant documentation? (Note: This question only applies if the item is one of the 50% for which an anchorage configuration verification is required.) Not Applicable

6. Based on the above anchorage evaluations, is the anchorage free of potentially adverse seismic conditions? Yes

ATTACHMENT 3
WALKDOWN CHECKLISTS

Status: Y N U

Seismic Walkdown Checklist (SWC)

Equipment ID No.: 2DAMP5426B

Equipment Class: (10) Air Handlers

Equipment Description: 21 U RECIRC AIR DMPR

Interaction Effects

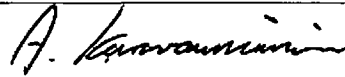
- | | |
|---|-----|
| 7. Are soft targets free from impact by nearby equipment or structures? | Yes |
| | |
| 8. Are overhead equipment, distribution systems, ceiling tiles and lighting, and masonry block walls not likely to collapse onto the equipment? | Yes |
| | |
| 9. Do attached lines have adequate flexibility to avoid damage? | Yes |
| | |
| 10. Based on the above seismic interaction evaluations, is equipment free of potentially adverse seismic interaction effects? | Yes |
-

Other Adverse Conditions

- | | |
|--|-----|
| 11. Have you looked for and found no adverse seismic conditions that could adversely affect the safety functions of the equipment? | Yes |
|--|-----|
-

Comments

Evaluated by:



A. Karavoussianis

Date: 11/09/2012



C. Figliolini

11/09/2012

Photos

ATTACHMENT 3
WALKDOWN CHECKLISTS

Status: Y N U

Seismic Walkdown Checklist (SWC)

Equipment ID No.: 2DAMP5426B

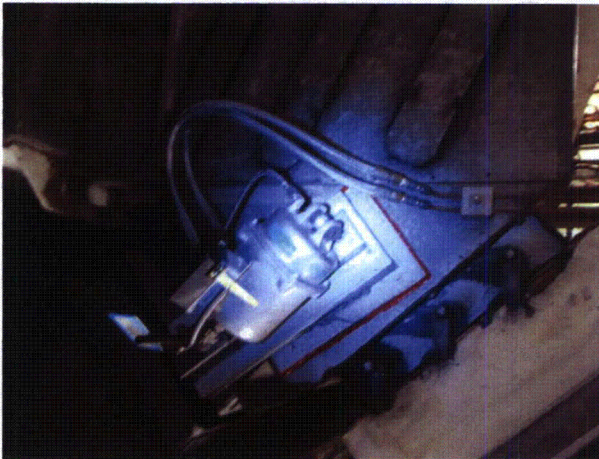
Equipment Class: (10) Air Handlers

Equipment Description: 21 U RECIRC AIR DMPR



2DAMP5426B 8-9-12 192

2DAMP5426B 8-9-12 193



2DAMP5426B 8-9-12 194

ATTACHMENT 3
WALKDOWN CHECKLISTS

Status: Y N U

Seismic Walkdown Checklist (SWC)

Equipment ID No.: 2DISC189-2103A

Equipment Class: (14) Distribution Panels

Equipment Description: 2A DG TO DISC SW 2NA103

Project: CCNPP 2 SWEL

Location (Bldg, Elev, Room/Area): AUX, 45.00 ft, CAL-AB-422

Manufacturer/Model: _____

Instructions for Completing Checklist

This checklist may be used to document the results of the Seismic Walkdown of an item of equipment on the SWEL. The space below each of the following questions may be used to record the results of judgments and findings. Additional space is provided at the end of this checklist for documenting other comments.

Anchorage

1. Is anchorage configuration verification required (i.e., is the item one of the 50% of SWEL items requiring such verification)? Yes

2. Is the anchorage free of bent, broken, missing or loose hardware? Yes

3. Is the anchorage free of corrosion that is more than mild surface oxidation? Yes

4. Is the anchorage free of visible cracks in the concrete near the anchors? Yes

5. Is the anchorage configuration consistent with plant documentation? (Note: This question only applies if the item is one of the 50% for which an anchorage configuration verification is required.) Yes
Walkdown anchorage as-built sketch is consistent with calculation CA01632.

6. Based on the above anchorage evaluations, is the anchorage free of potentially adverse seismic conditions? Yes

ATTACHMENT 3
WALKDOWN CHECKLISTS

Status: Y N U

Seismic Walkdown Checklist (SWC)

Equipment ID No.: 2DISC189-2103A

Equipment Class: (14) Distribution Panels

Equipment Description: 2A DG TO DISC SW 2NA103



Interaction Effects

- | | |
|---|-----|
| 7. Are soft targets free from impact by nearby equipment or structures? | Yes |
| | |
| 8. Are overhead equipment, distribution systems, ceiling tiles and lighting, and masonry block walls not likely to collapse onto the equipment? | Yes |
| | |
| 9. Do attached lines have adequate flexibility to avoid damage? | Yes |
| | |
| 10. Based on the above seismic interaction evaluations, is equipment free of potentially adverse seismic interaction effects? | Yes |
-

Other Adverse Conditions

- | | |
|---|----|
| 11. Have you looked for and found no adverse seismic conditions that could adversely affect the safety functions of the equipment?
<i>Cabinet is inaccessible for internal inspection.</i> | No |
|---|----|
-

Comments

Evaluated by:	 A. Karavoussianis	Date: 11/09/2012
	 C. Figliolini	11/09/2012

Photos

ATTACHMENT 3

WALKDOWN CHECKLISTS

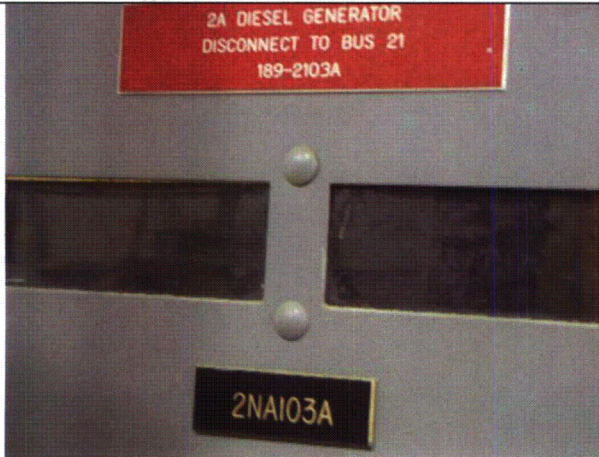
Status: Y N U

Seismic Walkdown Checklist (SWC)

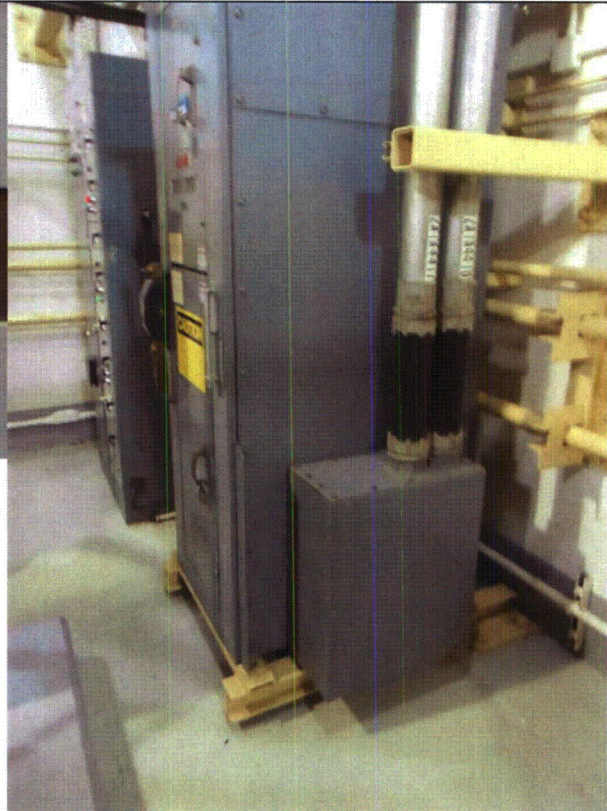
Equipment ID No.: 2DISC189-2103A

Equipment Class: (14) Distribution Panels

Equipment Description: 2A DG TO DISC SW 2NA103



2DISC189-2103A 8-13-12 203



2DISC189-2103A 8-13-12 204

ATTACHMENT 3
WALKDOWN CHECKLISTS

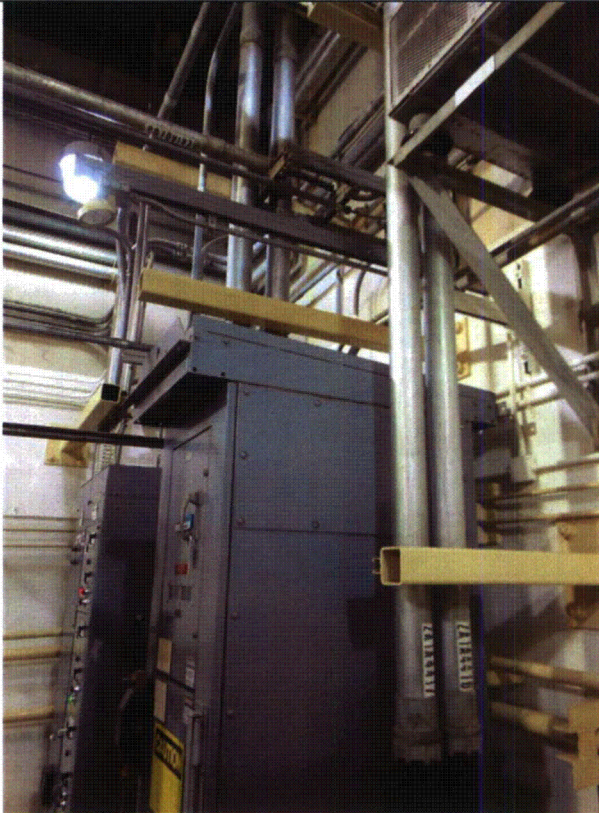
Status: Y N U

Seismic Walkdown Checklist (SWC)

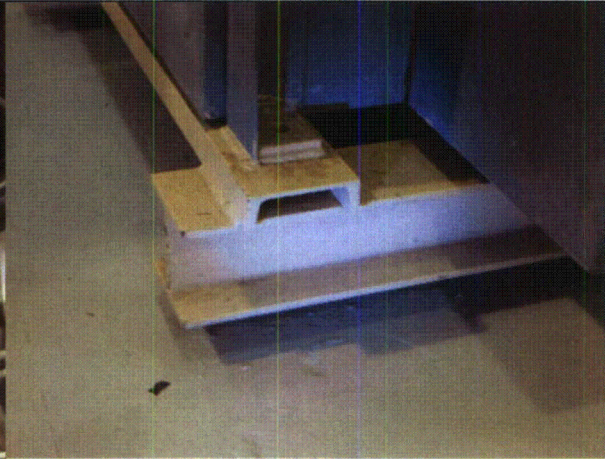
Equipment ID No.: 2DISC189-2103A

Equipment Class: (14) Distribution Panels

Equipment Description: 2A DG TO DISC SW 2NA103



2DISC189-2103A 8-13-12 205



2DISC189-2103A 8-13-12 206

ATTACHMENT 3
WALKDOWN CHECKLISTS

Status: Y N U

Seismic Walkdown Checklist (SWC)

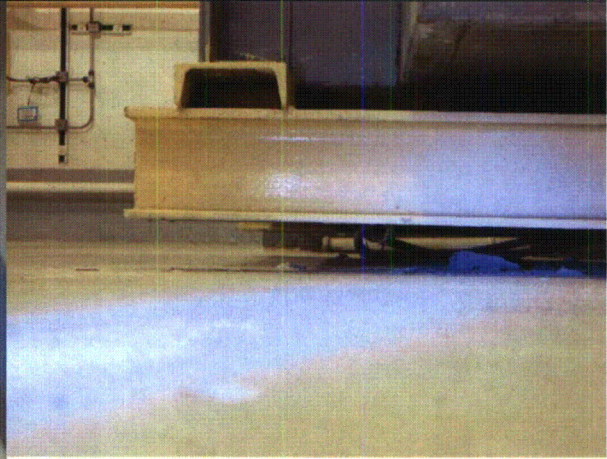
Equipment ID No.: 2DISC189-2103A

Equipment Class: (14) Distribution Panels

Equipment Description: 2A DG TO DISC SW 2NA103



2DISC189-2103A 8-13-12 207



2DISC189-2103A 8-13-12 208

ATTACHMENT 3
WALKDOWN CHECKLISTS

Status: Y N U

Seismic Walkdown Checklist (SWC)

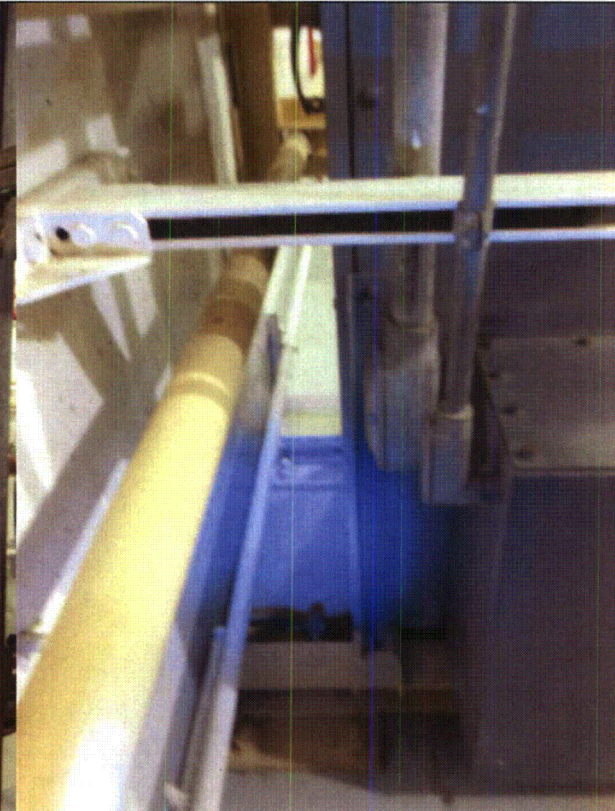
Equipment ID No.: 2DISC189-2103A

Equipment Class: (14) Distribution Panels

Equipment Description: 2A DG TO DISC SW 2NA103



2DISC189-2103A 8-13-12 209



2DISC189-2103A 8-13-12 210

ATTACHMENT 3
WALKDOWN CHECKLISTS

Status: Y N U

Seismic Walkdown Checklist (SWC)

Equipment ID No.: 2ENGEDG2B

Equipment Class: (17) Engine-Generators

Equipment Description: DIESEL GENERATOR 2B ENGINE

Project: CCNPP 2 SWEL

Location (Bldg, Elev, Room/Area): AUX, 45.00 ft, CAL-AB-416

Manufacturer/Model: _____

Instructions for Completing Checklist

This checklist may be used to document the results of the Seismic Walkdown of an item of equipment on the SWEL. The space below each of the following questions may be used to record the results of judgments and findings. Additional space is provided at the end of this checklist for documenting other comments.

Anchorage

1. Is anchorage configuration verification required (i.e., is the item one of the 50% of SWEL items requiring such verification)? Yes

2. Is the anchorage free of bent, broken, missing or loose hardware? Yes

3. Is the anchorage free of corrosion that is more than mild surface oxidation? Yes

4. Is the anchorage free of visible cracks in the concrete near the anchors? Yes
Minor grout crack but not close to bolts, judged not to be a seismic concern.

5. Is the anchorage configuration consistent with plant documentation? (Note: This question only applies if the item is one of the 50% for which an anchorage configuration verification is required.) Yes
Anchorage is consistent with drawings 36988 (C-490).

6. Based on the above anchorage evaluations, is the anchorage free of potentially adverse seismic conditions? Yes

ATTACHMENT 3
WALKDOWN CHECKLISTS

Status: Y N U

Seismic Walkdown Checklist (SWC)

Equipment ID No.: 2ENGEDG2B

Equipment Class: (17) Engine-Generators

Equipment Description: DIESEL GENERATOR 2B ENGINE

Interaction Effects

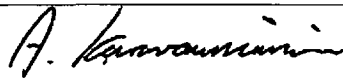
7. Are soft targets free from impact by nearby equipment or structures? Yes
8. Are overhead equipment, distribution systems, ceiling tiles and lighting, and masonry block walls not likely to collapse onto the equipment? No
There is tubing and a sight glass that are within the path of influence of overhead lights.
10/3/12 - Overhead lights were deemed not a credible seismic concern due to their lightweight and typical construction practices. Also, they have been previously evaluated by CCNPP and found seismically acceptable.
Unit 2G2B is mounted on vibration isolators, need to investigate the seismic adequacy of this unit's anchorage. CR-2012-010381 written to address this issue.
9. Do attached lines have adequate flexibility to avoid damage? Yes
10. Based on the above seismic interaction evaluations, is equipment free of potentially adverse seismic interaction effects? Yes
-

Other Adverse Conditions

11. Have you looked for and found no adverse seismic conditions that could adversely affect the safety functions of the equipment? Yes
-

Comments

Evaluated by:



A. Karavoussianis

Date: 11/09/2012

ATTACHMENT 3
WALKDOWN CHECKLISTS

Status: Y N U

Seismic Walkdown Checklist (SWC)

Equipment ID No.: 2ENGEDG2B

Equipment Class: (17) Engine-Generators

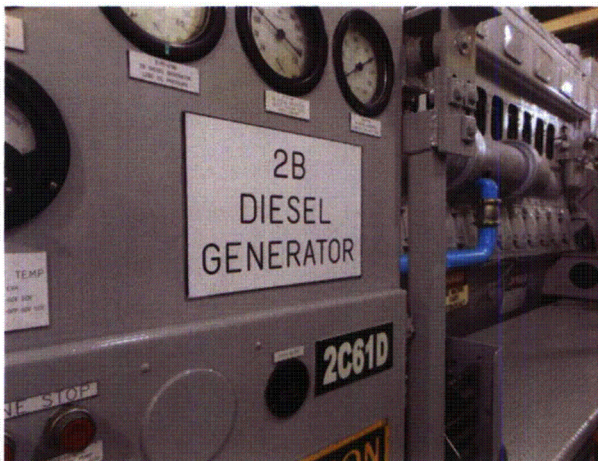
Equipment Description: DIESEL GENERATOR 2B ENGINE



C. Figliolini

11/09/2012

Photos



2ENGEDG2B 8-13-12 042



2ENGEDG2B 8-13-12 043

ATTACHMENT 3
WALKDOWN CHECKLISTS

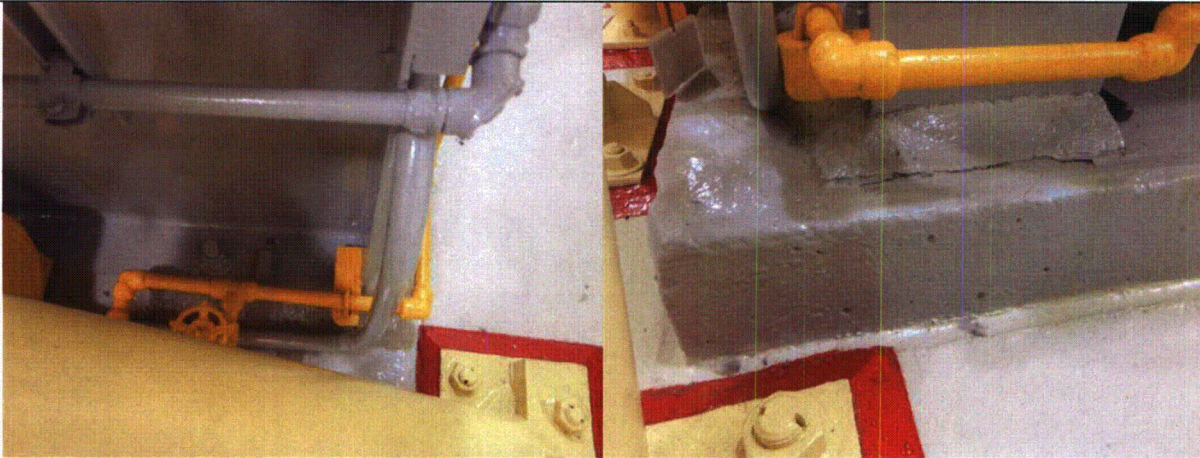
Status: Y N U

Seismic Walkdown Checklist (SWC)

Equipment ID No.: 2ENGEDG2B

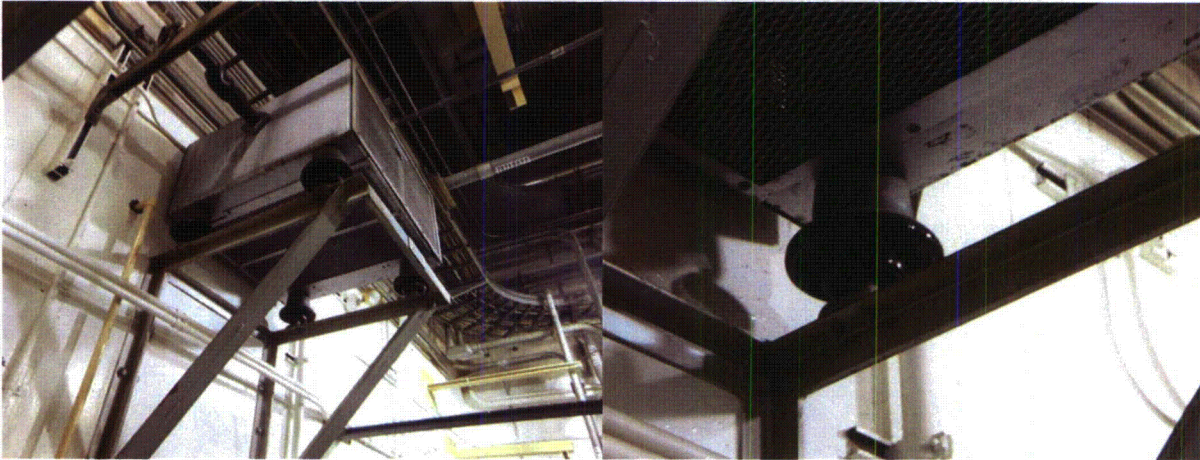
Equipment Class: (17) Engine-Generators

Equipment Description: DIESEL GENERATOR 2B ENGINE



2ENGEDG2B 8-13-12 044

2ENGEDG2B 8-13-12 045



2ENGEDG2B 8-13-12 046

2ENGEDG2B 8-13-12 047

ATTACHMENT 3

WALKDOWN CHECKLISTS

Status: Y N U

Seismic Walkdown Checklist (SWC)

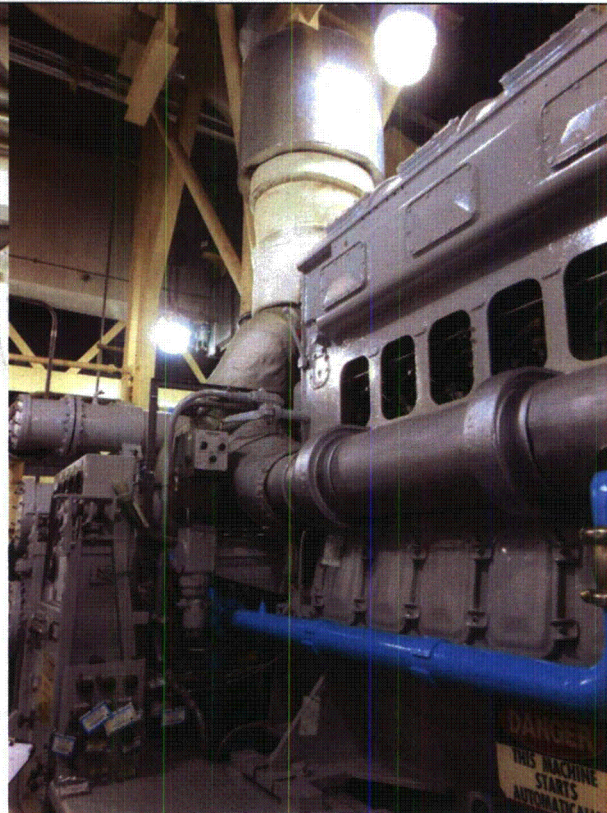
Equipment ID No.: 2ENGEDG2B

Equipment Class: (17) Engine-Generators

Equipment Description: DIESEL GENERATOR 2B ENGINE



2ENGEDG2B 8-13-12 049



2ENGEDG2B 8-13-12 050

ATTACHMENT 3

WALKDOWN CHECKLISTS

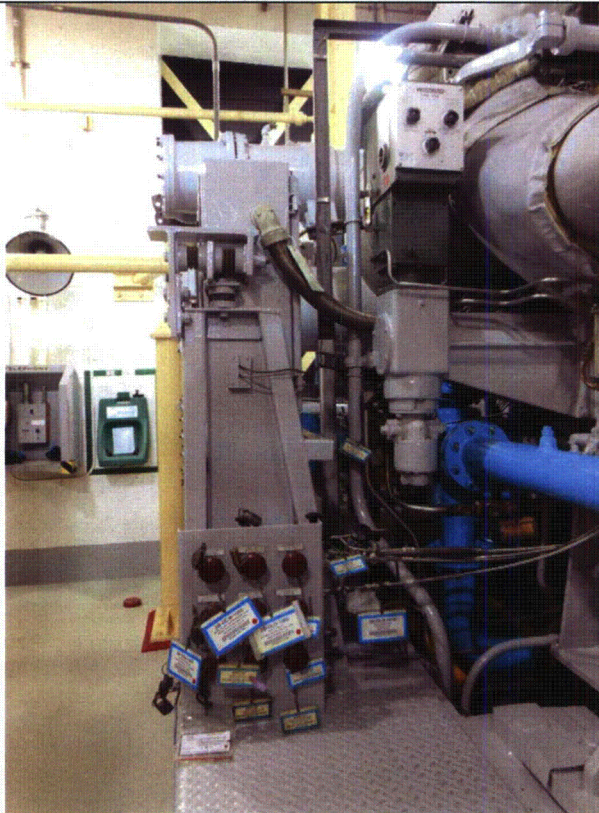
Status: Y N U

Seismic Walkdown Checklist (SWC)

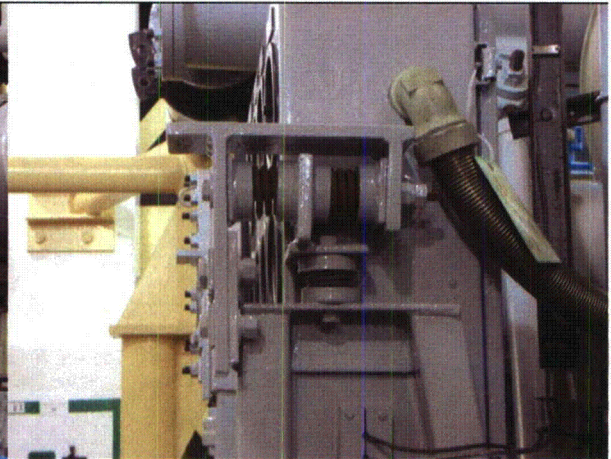
Equipment ID No.: 2ENGEDG2B

Equipment Class: (17) Engine-Generators

Equipment Description: DIESEL GENERATOR 2B ENGINE



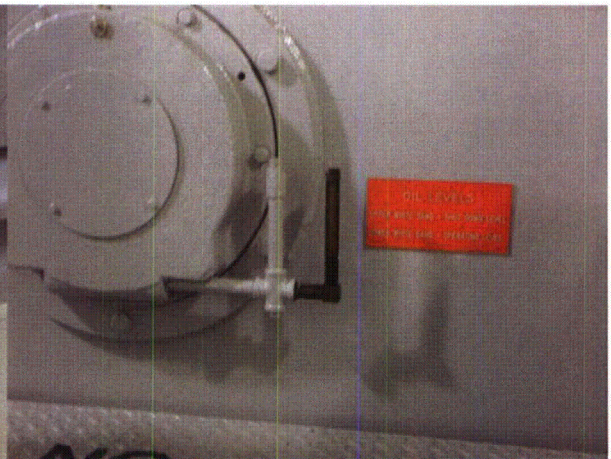
2ENGEDG2B 8-13-12 051



2ENGEDG2B 8-13-12 052



2ENGEDG2B 8-13-12 053



2ENGEDG2B 8-13-12 054

ATTACHMENT 3
WALKDOWN CHECKLISTS

Status: Y N U

Seismic Walkdown Checklist (SWC)

Equipment ID No.: 2FAN0448A

Equipment Class: (9) Fans

Equipment Description: ECCS PP RM CLR 22 FAN A

Project: CCNPP 2 SWEL

Location (Bldg, Elev, Room/Area): AUX, -15.00 ft, CAL-AB-102

Manufacturer/Model: _____

Instructions for Completing Checklist

This checklist may be used to document the results of the Seismic Walkdown of an item of equipment on the SWEL. The space below each of the following questions may be used to record the results of judgments and findings. Additional space is provided at the end of this checklist for documenting other comments.

Anchorage

1. Is anchorage configuration verification required (i.e., is the item one of the 50% of SWEL items requiring such verification)? No

2. Is the anchorage free of bent, broken, missing or loose hardware? Yes

3. Is the anchorage free of corrosion that is more than mild surface oxidation? Yes

4. Is the anchorage free of visible cracks in the concrete near the anchors? Yes

5. Is the anchorage configuration consistent with plant documentation? (Note: This question only applies if the item is one of the 50% for which an anchorage configuration verification is required.) Not Applicable

6. Based on the above anchorage evaluations, is the anchorage free of potentially adverse seismic conditions? Yes

ATTACHMENT 3
WALKDOWN CHECKLISTS

Status: Y N U

Seismic Walkdown Checklist (SWC)

Equipment ID No.: 2FAN0448A

Equipment Class: (9) Fans

Equipment Description: ECCS PP RM CLR 22 FAN A

Interaction Effects

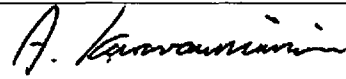
7. Are soft targets free from impact by nearby equipment or structures? Yes
8. Are overhead equipment, distribution systems, ceiling tiles and lighting, and masonry block walls not likely to collapse onto the equipment? Yes
9. Do attached lines have adequate flexibility to avoid damage? Yes
10. Based on the above seismic interaction evaluations, is equipment free of potentially adverse seismic interaction effects? Yes
-

Other Adverse Conditions

11. Have you looked for and found no adverse seismic conditions that could adversely affect the safety functions of the equipment? Yes
-

Comments

Evaluated by:



A. Karavoussianis

Date: 11/09/2012



C. Figliolini

11/09/2012

Photos

ATTACHMENT 3
WALKDOWN CHECKLISTS

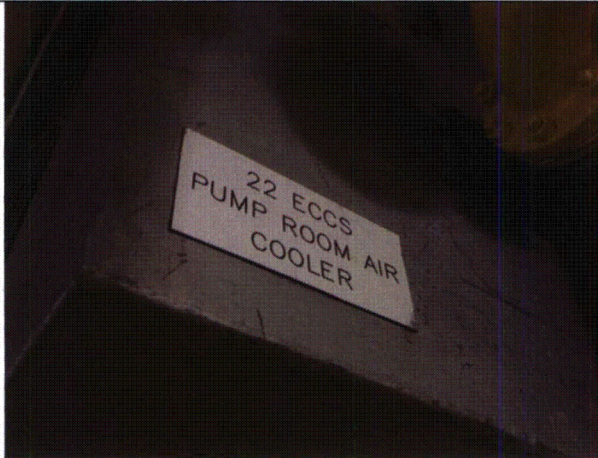
Status: Y N U

Seismic Walkdown Checklist (SWC)

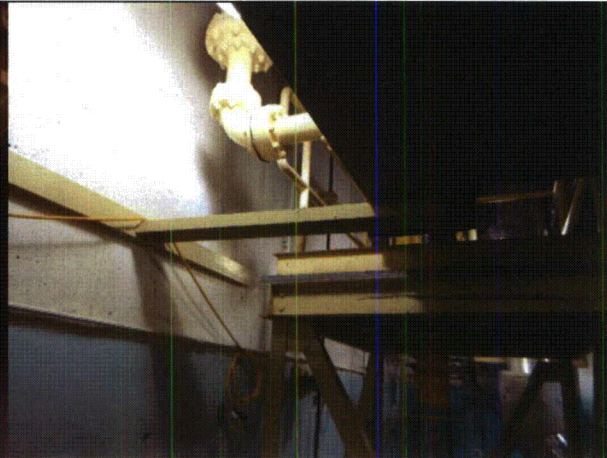
Equipment ID No.: 2FAN0448A

Equipment Class: (9) Fans

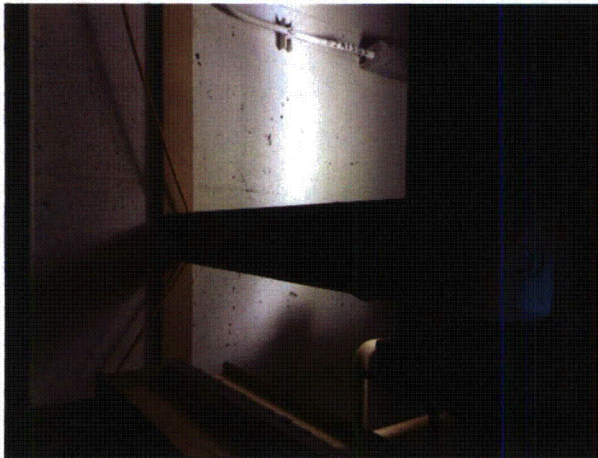
Equipment Description: ECCS PP RM CLR 22 FAN A



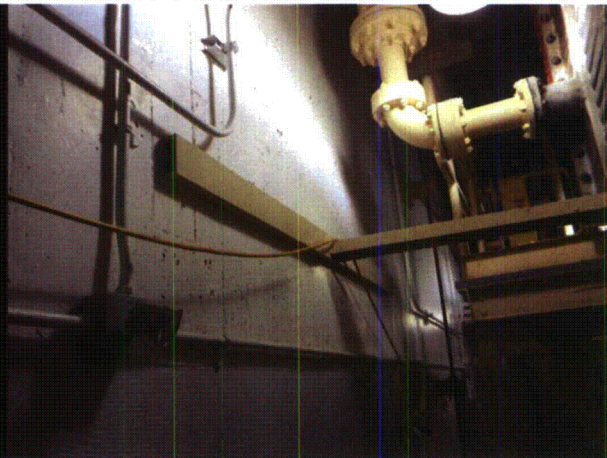
2FAN0448A 8-7-12 258



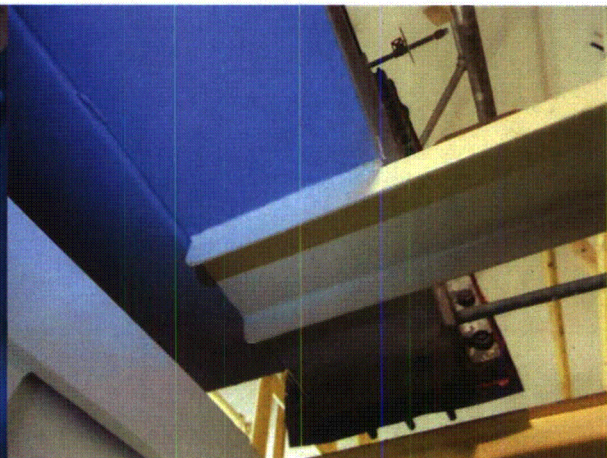
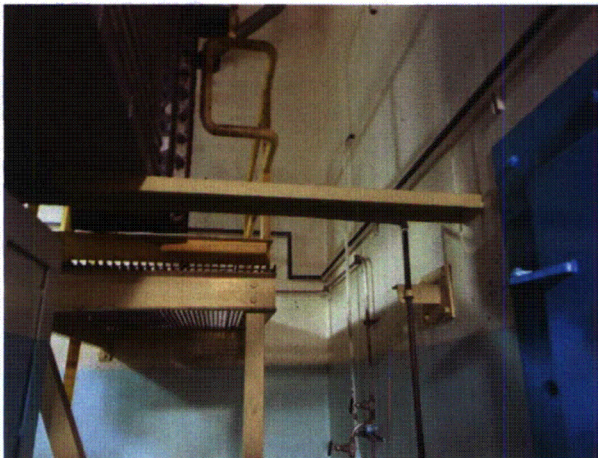
2FAN0448A 8-7-12 259



2FAN0448A 8-7-12 261



2FAN0448A 8-7-12 262



ATTACHMENT 3
WALKDOWN CHECKLISTS

Status: Y N U

Seismic Walkdown Checklist (SWC)

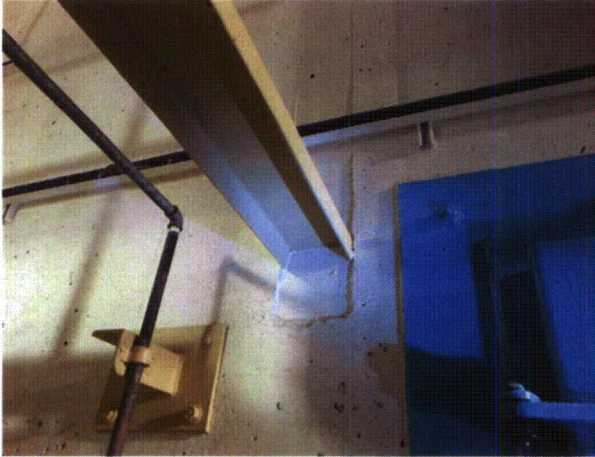
Equipment ID No.: 2FAN0448A

Equipment Class: (9) Fans

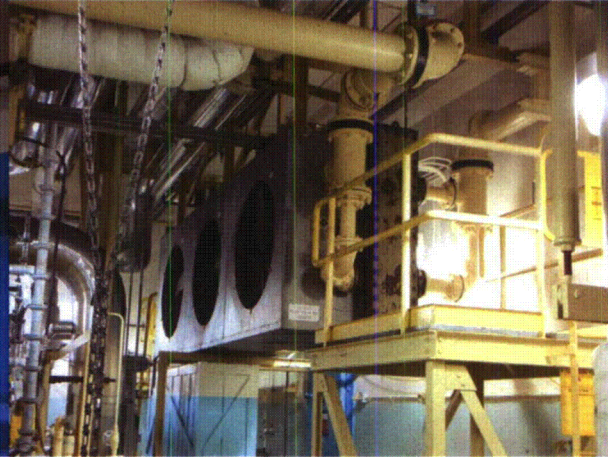
Equipment Description: ECCS PP RM CLR 22 FAN A

2FAN0448A 8-7-12 263

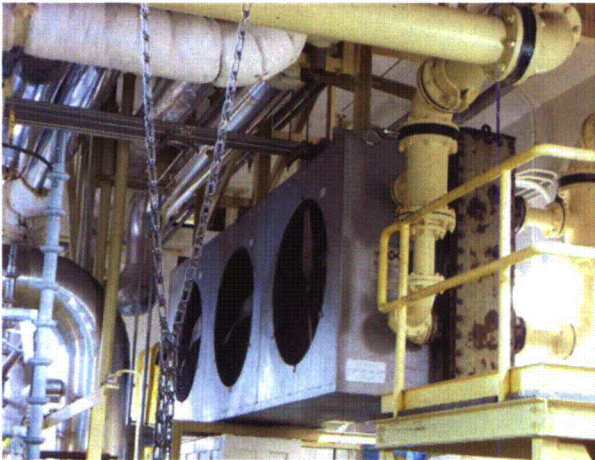
2FAN0448A 8-7-12 264



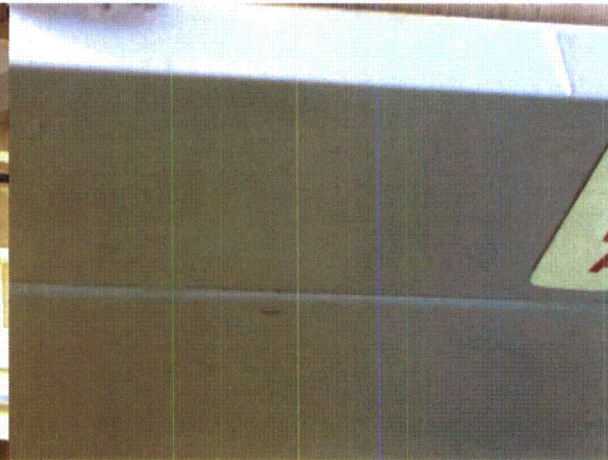
2FAN0448A 8-7-12 265



2FAN0448A 8-7-12 266



2FAN0448A 8-7-12 267



2FAN0448A 8-7-12 268

ATTACHMENT 3
WALKDOWN CHECKLISTS

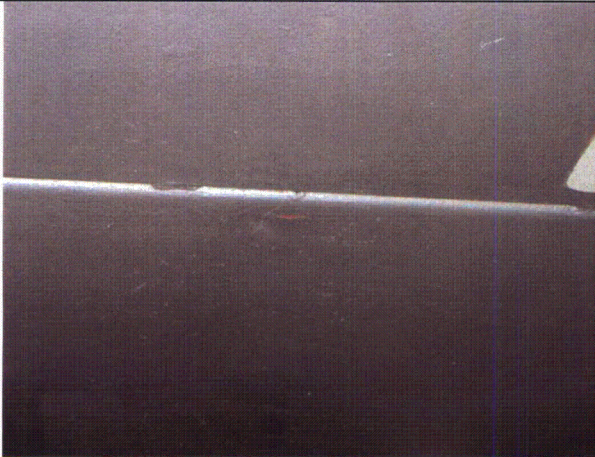
Status: Y N U

Seismic Walkdown Checklist (SWC)

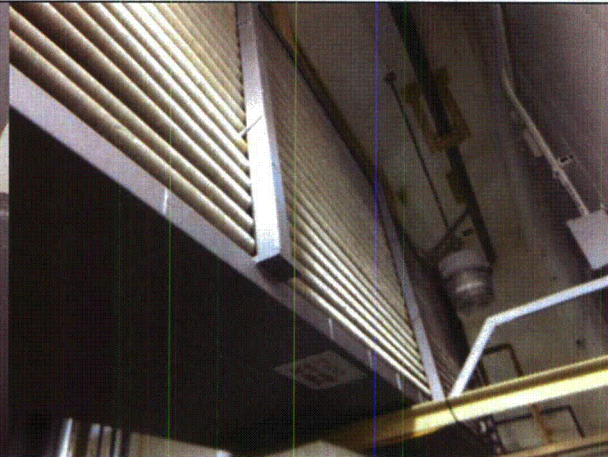
Equipment ID No.: 2FAN0448A

Equipment Class: (9) Fans

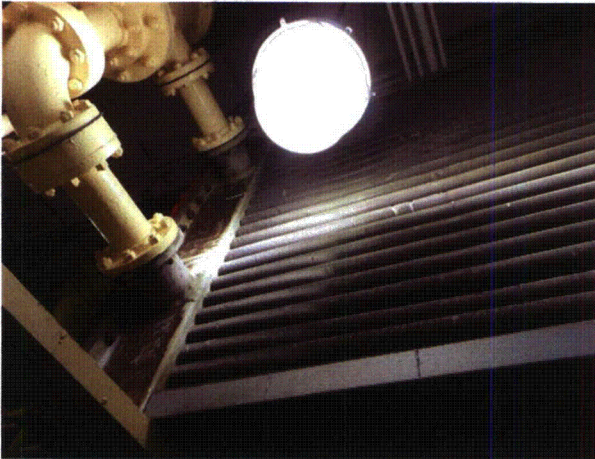
Equipment Description: ECCS PP RM CLR 22 FAN A



2FAN0448A 8-7-12 269



2FAN0448A 8-7-12 270



2FAN0448A 8-7-12 271

ATTACHMENT 3
WALKDOWN CHECKLISTS

Status: Y N U

Seismic Walkdown Checklist (SWC)

Equipment ID No.: 2FANHVACEDGS2A

Equipment Class: (9) Fans

Equipment Description: 2A DG RM SPLY FAN

Project: CCNPP 2 SWEL

Location (Bldg, Elev, Room/Area): AUX, 45.00 ft, CAL-AB-422

Manufacturer/Model: _____

Instructions for Completing Checklist

This checklist may be used to document the results of the Seismic Walkdown of an item of equipment on the SWEL. The space below each of the following questions may be used to record the results of judgments and findings. Additional space is provided at the end of this checklist for documenting other comments.

Anchorage

1. Is anchorage configuration verification required (i.e., is the item one of the 50% of SWEL items requiring such verification)? No

2. Is the anchorage free of bent, broken, missing or loose hardware? Yes

3. Is the anchorage free of corrosion that is more than mild surface oxidation? Yes

4. Is the anchorage free of visible cracks in the concrete near the anchors? Yes

5. Is the anchorage configuration consistent with plant documentation? (Note: This question only applies if the item is one of the 50% for which an anchorage configuration verification is required.) Not Applicable

6. Based on the above anchorage evaluations, is the anchorage free of potentially adverse seismic conditions? Yes

ATTACHMENT 3
WALKDOWN CHECKLISTS

Status: Y N U

Seismic Walkdown Checklist (SWC)

Equipment ID No.: 2FANHVACEDGS2A

Equipment Class: (9) Fans

Equipment Description: 2A DG RM SPLY FAN

Interaction Effects

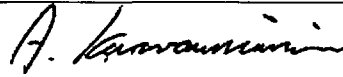
7. Are soft targets free from impact by nearby equipment or structures? Yes
8. Are overhead equipment, distribution systems, ceiling tiles and lighting, and masonry block walls not likely to collapse onto the equipment? Yes
9. Do attached lines have adequate flexibility to avoid damage? Yes
10. Based on the above seismic interaction evaluations, is equipment free of potentially adverse seismic interaction effects? Yes
-

Other Adverse Conditions

11. Have you looked for and found no adverse seismic conditions that could adversely affect the safety functions of the equipment? Yes
-

Comments

Evaluated by:



A. Karavoussianis

Date: 11/09/2012



C. Figliolini

11/09/2012

Photos

ATTACHMENT 3

WALKDOWN CHECKLISTS

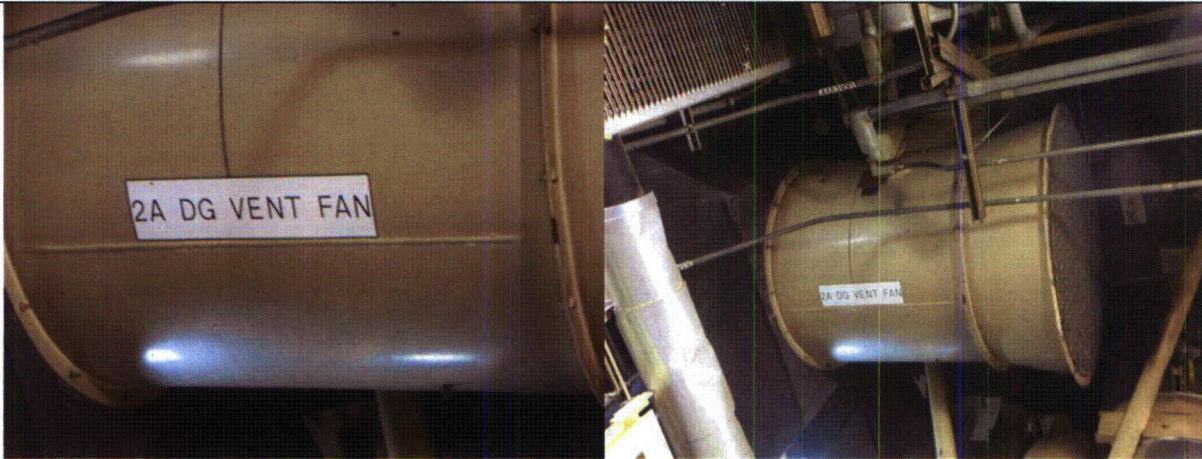
Status: Y N U

Seismic Walkdown Checklist (SWC)

Equipment ID No.: 2FANHVACEDGS2A

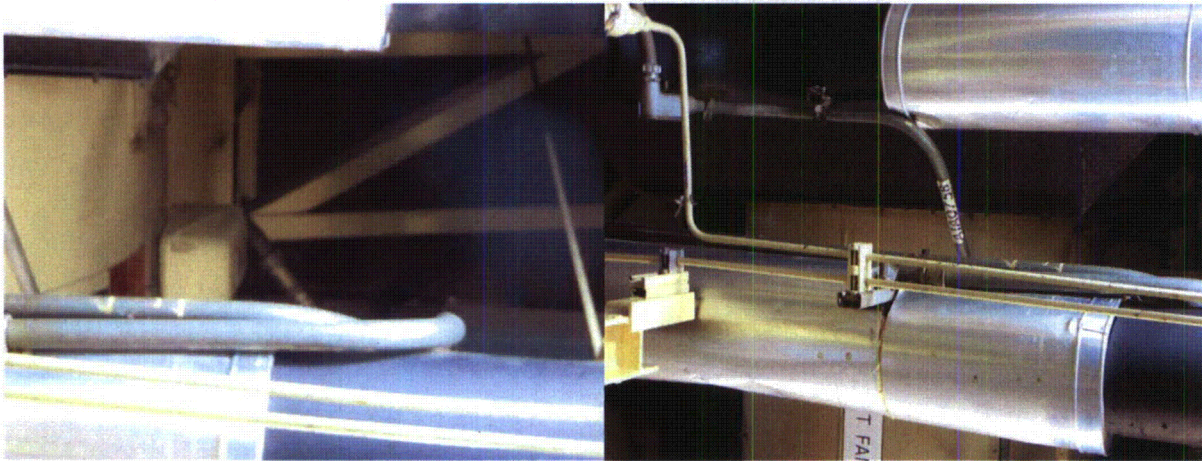
Equipment Class: (9) Fans

Equipment Description: 2A DG RM SPLY FAN



2FANHVACEDGS2A 8-13-12 211

2FANHVACEDGS2A 8-13-12 212



2FANHVACEDGS2A 8-13-12 213

2FANHVACEDGS2A 8-13-12 214

ATTACHMENT 3
WALKDOWN CHECKLISTS

Status: Y N U

Seismic Walkdown Checklist (SWC)

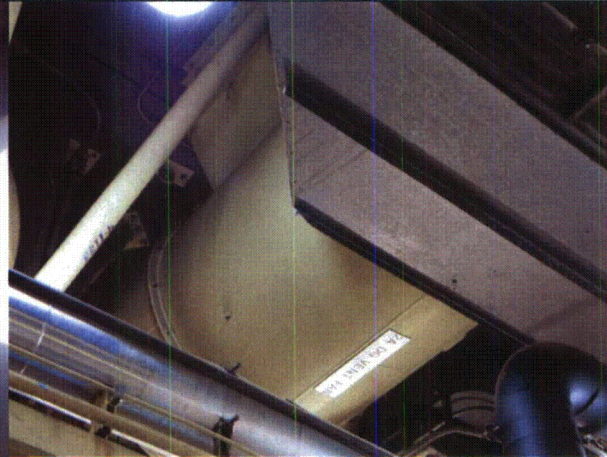
Equipment ID No.: 2FANHVACEDGS2A

Equipment Class: (9) Fans

Equipment Description: 2A DG RM SPLY FAN



2FANHVACEDGS2A 8-13-12 216



2FANHVACEDGS2A 8-13-12 217

ATTACHMENT 3
WALKDOWN CHECKLISTS

Status: Y N U

Seismic Walkdown Checklist (SWC)

Equipment ID No.: 2FANHVACPENETE21

Equipment Class: (9) Fans

Equipment Description: 21 PENET RM EXH FAN

Project: CCNPP 2 SWEL

Location (Bldg, Elev, Room/Area): AUX, 5.00 ft, CAL-AB-204

Manufacturer/Model: _____

Instructions for Completing Checklist

This checklist may be used to document the results of the Seismic Walkdown of an item of equipment on the SWEL. The space below each of the following questions may be used to record the results of judgments and findings. Additional space is provided at the end of this checklist for documenting other comments.

Anchorage

1. Is anchorage configuration verification required (i.e., is the item one of the 50% of SWEL items requiring such verification)? No

2. Is the anchorage free of bent, broken, missing or loose hardware? Yes
Fan is on vibration isolator (springs). Isolator is judged not to be a seismic concern.

3. Is the anchorage free of corrosion that is more than mild surface oxidation? Yes

4. Is the anchorage free of visible cracks in the concrete near the anchors? Yes

5. Is the anchorage configuration consistent with plant documentation? (Note: This question only applies if the item is one of the 50% for which an anchorage configuration verification is required.) Not Applicable

6. Based on the above anchorage evaluations, is the anchorage free of potentially adverse seismic conditions? Yes

ATTACHMENT 3
WALKDOWN CHECKLISTS

Status: Y N U

Seismic Walkdown Checklist (SWC)

Equipment ID No.: 2FANHVACPENETE21

Equipment Class: (9) Fans

Equipment Description: 21 PENET RM EXH FAN

Interaction Effects

7. Are soft targets free from impact by nearby equipment or structures? Yes
8. Are overhead equipment, distribution systems, ceiling tiles and lighting, and masonry block walls not likely to collapse onto the equipment? Yes
9. Do attached lines have adequate flexibility to avoid damage? Yes
10. Based on the above seismic interaction evaluations, is equipment free of potentially adverse seismic interaction effects? Yes
-

Other Adverse Conditions

11. Have you looked for and found no adverse seismic conditions that could adversely affect the safety functions of the equipment? Yes
-

Comments

Evaluated by:



A. Karavoussianis

Date: 11/09/2012



C. Figliolini

11/09/2012

Photos

ATTACHMENT 3
WALKDOWN CHECKLISTS

Status: Y N U

Seismic Walkdown Checklist (SWC)

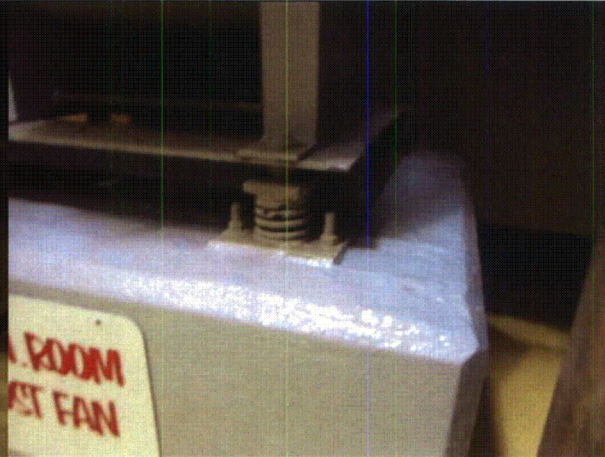
Equipment ID No.: 2FANHVACPENETE21

Equipment Class: (9) Fans

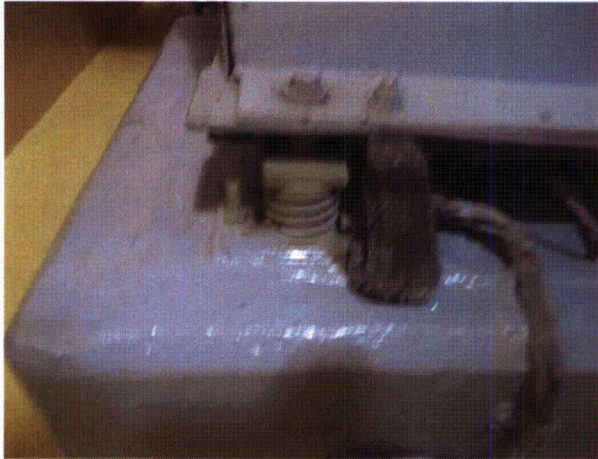
Equipment Description: 21 PENET RM EXH FAN



2FANHVACPENETE21 8-7-12 111



2FANHVACPENETE21 8-7-12 112



2FANHVACPENETE21 8-7-12 113



2FANHVACPENETE21 8-7-12 114

ATTACHMENT 3
WALKDOWN CHECKLISTS

Status: Y N U

Seismic Walkdown Checklist (SWC)

Equipment ID No.: 2FANHVACPENETE21

Equipment Class: (9) Fans

Equipment Description: 21 PENET RM EXH FAN



2FANHVACPENETE21 8-7-12 115

2FANHVACPENETE21 8-7-12 116

ATTACHMENT 3
WALKDOWN CHECKLISTS

Status: Y N U

Seismic Walkdown Checklist (SWC)

Equipment ID No.: 2FANHVACSWGRS21

Equipment Class: (9) Fans

Equipment Description: 21 SWGR RM SPLY FAN

Project: CCNPP 2 SWEL

Location (Bldg, Elev, Room/Area): AUX, 70.00 ft, CAL-AB-526

Manufacturer/Model: _____

Instructions for Completing Checklist

This checklist may be used to document the results of the Seismic Walkdown of an item of equipment on the SWEL. The space below each of the following questions may be used to record the results of judgments and findings. Additional space is provided at the end of this checklist for documenting other comments.

Anchorage

1. Is anchorage configuration verification required (i.e., is the item one of the 50% of SWEL items requiring such verification)? No
Fan is part of and mounted on 21SWGRHVAC.

 2. Is the anchorage free of bent, broken, missing or loose hardware? Not Applicable

 3. Is the anchorage free of corrosion that is more than mild surface oxidation? Not Applicable

 4. Is the anchorage free of visible cracks in the concrete near the anchors? Not Applicable

 5. Is the anchorage configuration consistent with plant documentation? (Note: This question only applies if the item is one of the 50% for which an anchorage configuration verification is required.) Not Applicable

 6. Based on the above anchorage evaluations, is the anchorage free of potentially adverse seismic conditions? Yes
-

ATTACHMENT 3
WALKDOWN CHECKLISTS

Status: Y N U

Seismic Walkdown Checklist (SWC)

Equipment ID No.: 2FANHVACSWGRS21

Equipment Class: (9) Fans

Equipment Description: 21 SWGR RM SPLY FAN

Interaction Effects

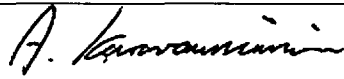
7. Are soft targets free from impact by nearby equipment or structures? Yes
8. Are overhead equipment, distribution systems, ceiling tiles and lighting, and masonry block walls not likely to collapse onto the equipment? Yes
9. Do attached lines have adequate flexibility to avoid damage? Yes
10. Based on the above seismic interaction evaluations, is equipment free of potentially adverse seismic interaction effects? Yes
-

Other Adverse Conditions

11. Have you looked for and found no adverse seismic conditions that could adversely affect the safety functions of the equipment? Yes
-

Comments

Evaluated by:



A. Karavoussianis

Date: 11/09/2012



C. Figliolini

11/09/2012

Photos

ATTACHMENT 3
WALKDOWN CHECKLISTS

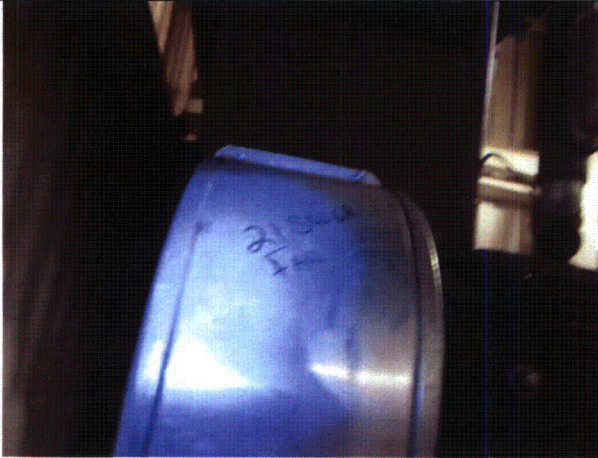
Status: Y N U

Seismic Walkdown Checklist (SWC)

Equipment ID No.: 2FANHVACSWGRS21

Equipment Class: (9) Fans

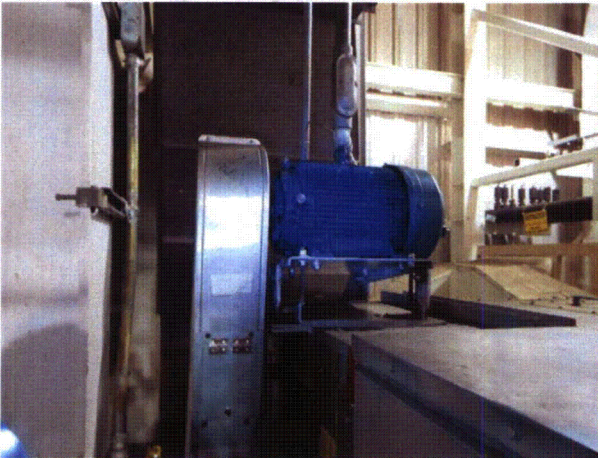
Equipment Description: 21 SWGR RM SPLY FAN



2FANHVACSWGRS21 8-9-12 188



2FANHVACSWGRS21 8-9-12 189



2FANHVACSWGRS21 8-9-12 190



2FANHVACSWGRS21 8-9-12 191

ATTACHMENT 3
WALKDOWN CHECKLISTS

Status: Y N U

Seismic Walkdown Checklist (SWC)

Equipment ID No.: 2FANHVACSWGRS21

Equipment Class: (9) Fans

Equipment Description: 21 SWGR RM SPLY FAN



2FANHVACSWGRS21 8-9-12 196



2FANHVACSWGRS21 8-9-12 198

ATTACHMENT 3
WALKDOWN CHECKLISTS

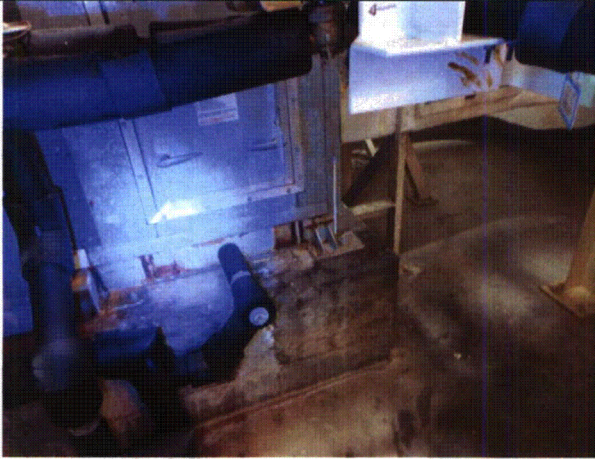
Status: Y N U

Seismic Walkdown Checklist (SWC)

Equipment ID No.: 2FANHVACSWGRS21

Equipment Class: (9) Fans

Equipment Description: 21 SWGR RM SPLY FAN



2FANHVACSWGRS21 8-9-12 201



2FANHVACSWGRS21 8-9-12 202

ATTACHMENT 3
WALKDOWN CHECKLISTS

Status: Y N U

Seismic Walkdown Checklist (SWC)

Equipment ID No.: 2FT321

Equipment Class: (20) Instrumentation and Control Panels and Cabinets

Equipment Description: HPSI FLOW TO LOOP 22B

Project: CCNPP 2 SWEL

Location (Bldg, Elev, Room/Area): AUX, 5.00 ft, CAL-AB-203

Manufacturer/Model: _____

Instructions for Completing Checklist

This checklist may be used to document the results of the Seismic Walkdown of an item of equipment on the SWEL. The space below each of the following questions may be used to record the results of judgments and findings. Additional space is provided at the end of this checklist for documenting other comments.

Anchorage

1. Is anchorage configuration verification required (i.e., is the item one of the 50% of SWEL items requiring such verification)? Yes

2. Is the anchorage free of bent, broken, missing or loose hardware? Yes

3. Is the anchorage free of corrosion that is more than mild surface oxidation? Yes

4. Is the anchorage free of visible cracks in the concrete near the anchors? Yes

5. Is the anchorage configuration consistent with plant documentation? (Note: This question only applies if the item is one of the 50% for which an anchorage configuration verification is required.) Yes
Walkdown as-built anchorage sketch is consistent with drawings 66300SH0002 and 91007 (J-106).

6. Based on the above anchorage evaluations, is the anchorage free of potentially adverse seismic conditions? Yes

ATTACHMENT 3
WALKDOWN CHECKLISTS

Status: Y N U

Seismic Walkdown Checklist (SWC)

Equipment ID No.: 2FT321

Equipment Class: (20) Instrumentation and Control Panels and Cabinets

Equipment Description: HPSI FLOW TO LOOP 22B

Interaction Effects

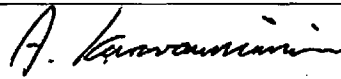
7. Are soft targets free from impact by nearby equipment or structures? Yes
8. Are overhead equipment, distribution systems, ceiling tiles and lighting, and masonry block walls not likely to collapse onto the equipment? Yes
9. Do attached lines have adequate flexibility to avoid damage? Yes
*Tubing is supported on the FT C6 stanchion and wall with adequate flexibility.
 Not a seismic concern.*
10. Based on the above seismic interaction evaluations, is equipment free of potentially adverse seismic interaction effects? Yes
-

Other Adverse Conditions

11. Have you looked for and found no adverse seismic conditions that could adversely affect the safety functions of the equipment? Yes
-

Comments

Evaluated by:



A. Karavoussianis

Date: 11/09/2012



C. Figliolini

11/09/2012

Photos

ATTACHMENT 3
WALKDOWN CHECKLISTS

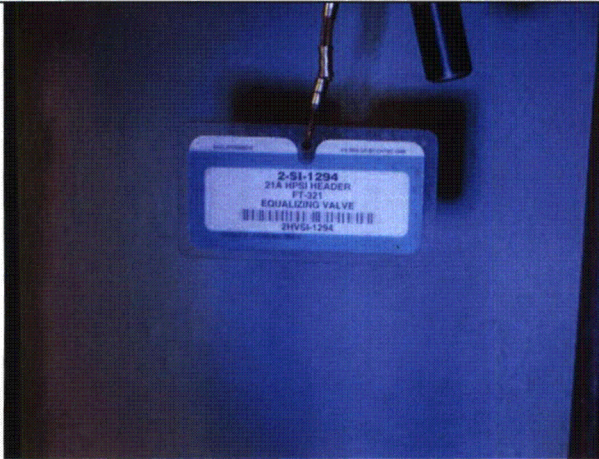
Status: Y N U

Seismic Walkdown Checklist (SWC)

Equipment ID No.: 2FT321

Equipment Class: (20) Instrumentation and Control Panels and Cabinets

Equipment Description: HPSI FLOW TO LOOP 22B



2FT321 8-6-12 127



2FT321 8-6-12 128

ATTACHMENT 3
WALKDOWN CHECKLISTS

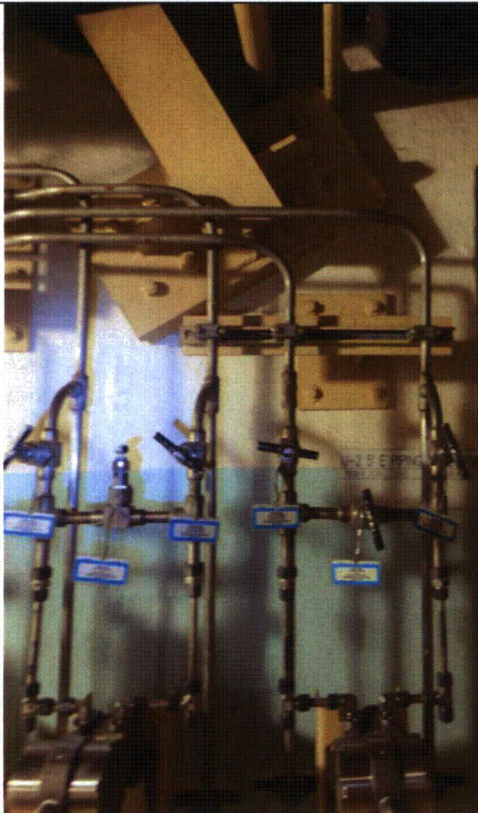
Status: Y N U

Seismic Walkdown Checklist (SWC)

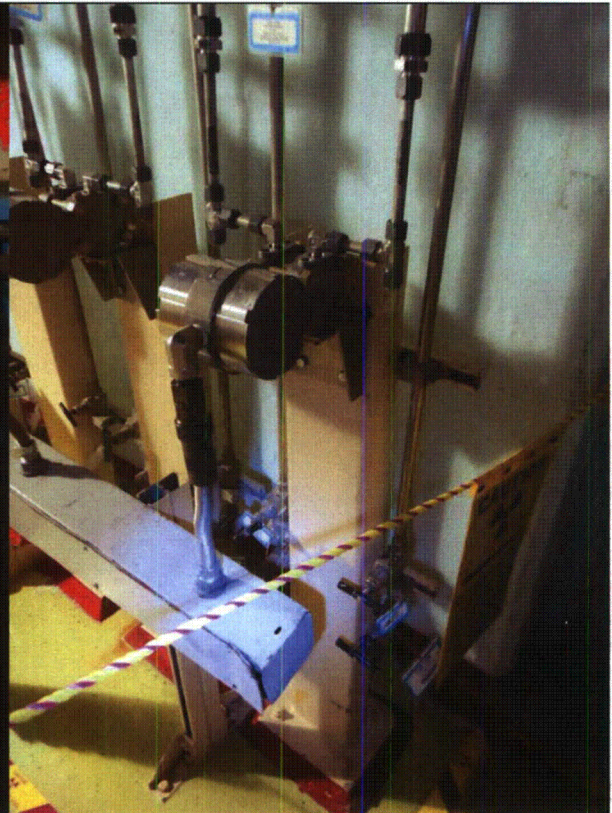
Equipment ID No.: 2FT321

Equipment Class: (20) Instrumentation and Control Panels and Cabinets

Equipment Description: HPSI FLOW TO LOOP 22B



2FT321 8-6-12 129



2FT321 8-6-12 130

ATTACHMENT 3
WALKDOWN CHECKLISTS

Status: Y N U

Seismic Walkdown Checklist (SWC)

Equipment ID No.: 2FT322

Equipment Class: (20) Instrumentation and Control Panels and Cabinets

Equipment Description: LPSI FLOW TO LOOP 22B

Project: CCNPP 2 SWEL

Location (Bldg, Elev, Room/Area): AUX, 5.00 ft, CAL-AB-203

Manufacturer/Model: _____

Instructions for Completing Checklist

This checklist may be used to document the results of the Seismic Walkdown of an item of equipment on the SWEL. The space below each of the following questions may be used to record the results of judgments and findings. Additional space is provided at the end of this checklist for documenting other comments.

Anchorage

1. Is anchorage configuration verification required (i.e., is the item one of the 50% of SWEL items requiring such verification)? Yes

2. Is the anchorage free of bent, broken, missing or loose hardware? Yes

3. Is the anchorage free of corrosion that is more than mild surface oxidation? Yes

4. Is the anchorage free of visible cracks in the concrete near the anchors? Yes

5. Is the anchorage configuration consistent with plant documentation? (Note: This question only applies if the item is one of the 50% for which an anchorage configuration verification is required.) Yes
Walkdown as-built anchorage sketch is consistent with drawing 91007 (J-106).

6. Based on the above anchorage evaluations, is the anchorage free of potentially adverse seismic conditions? Yes

ATTACHMENT 3
WALKDOWN CHECKLISTS

Status: Y N U

Seismic Walkdown Checklist (SWC)

Equipment ID No.: 2FT322

Equipment Class: (20) Instrumentation and Control Panels and Cabinets

Equipment Description: LPSI FLOW TO LOOP 22B

Interaction Effects

7. Are soft targets free from impact by nearby equipment or structures? Yes
8. Are overhead equipment, distribution systems, ceiling tiles and lighting, and masonry block walls not likely to collapse onto the equipment? Yes
9. Do attached lines have adequate flexibility to avoid damage? Yes
Tubing is supported on C6 stanchions and concrete wall, tubing has adequate flexibility. Not a seismic concern
10. Based on the above seismic interaction evaluations, is equipment free of potentially adverse seismic interaction effects? Yes
-

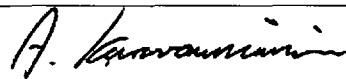
Other Adverse Conditions

11. Have you looked for and found no adverse seismic conditions that could adversely affect the safety functions of the equipment? Yes
-

Comments

Switched from 2FT332, which was inaccessible.

Evaluated by:



A. Karavoussianis

Date: 11/09/2012



C. Figliolini

11/09/2012

Photos

ATTACHMENT 3
WALKDOWN CHECKLISTS

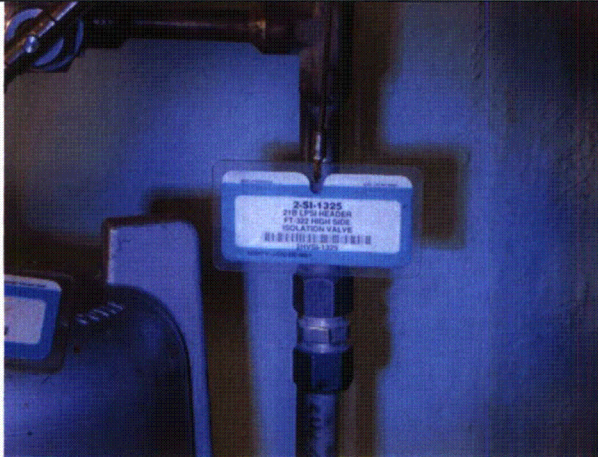
Status: Y N U

Seismic Walkdown Checklist (SWC)

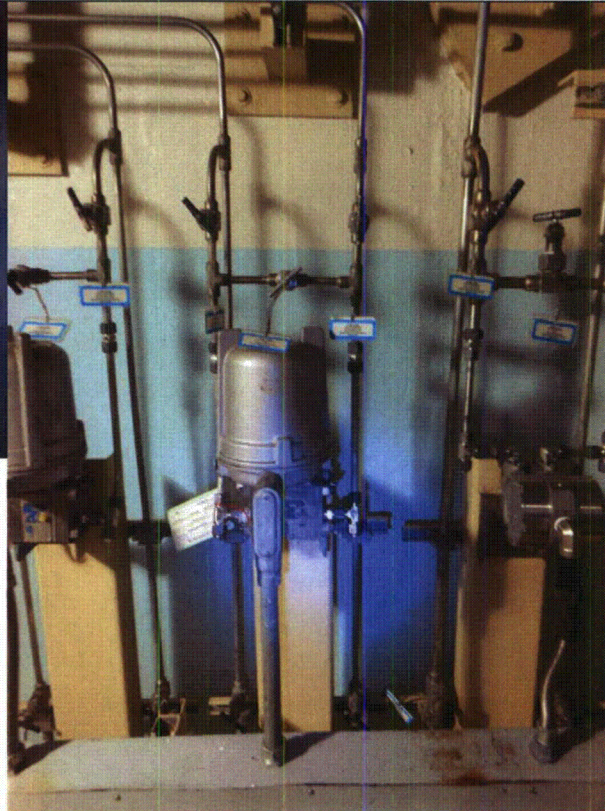
Equipment ID No.: 2FT322

Equipment Class: (20) Instrumentation and Control Panels and Cabinets

Equipment Description: LPSI FLOW TO LOOP 22B



2FT322 8-6-12 131



2FT322 8-6-12 132

ATTACHMENT 3
WALKDOWN CHECKLISTS

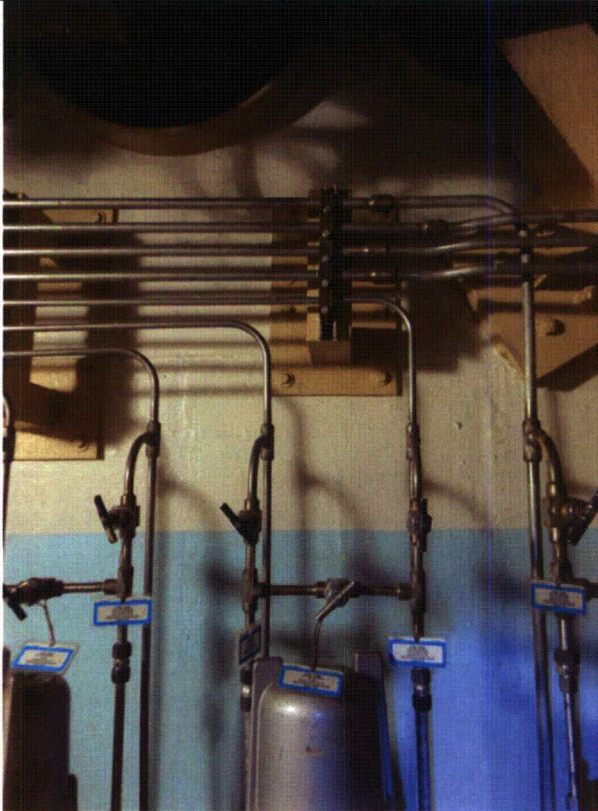
Status: Y N U

Seismic Walkdown Checklist (SWC)

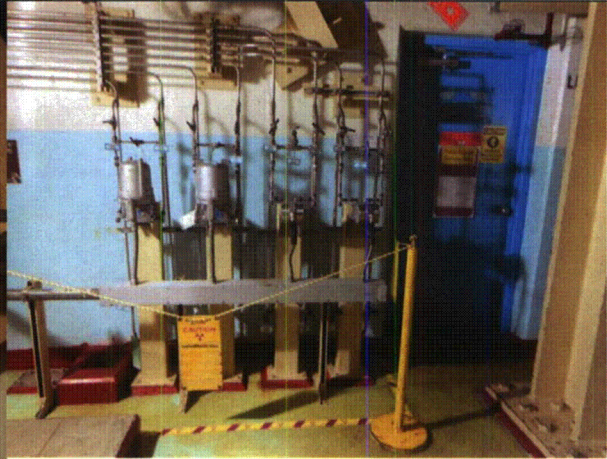
Equipment ID No.: 2FT322

Equipment Class: (20) Instrumentation and Control Panels and Cabinets

Equipment Description: LPSI FLOW TO LOOP 22B



2FT322 8-6-12 133



2FT322 8-6-12 134

ATTACHMENT 3
WALKDOWN CHECKLISTS

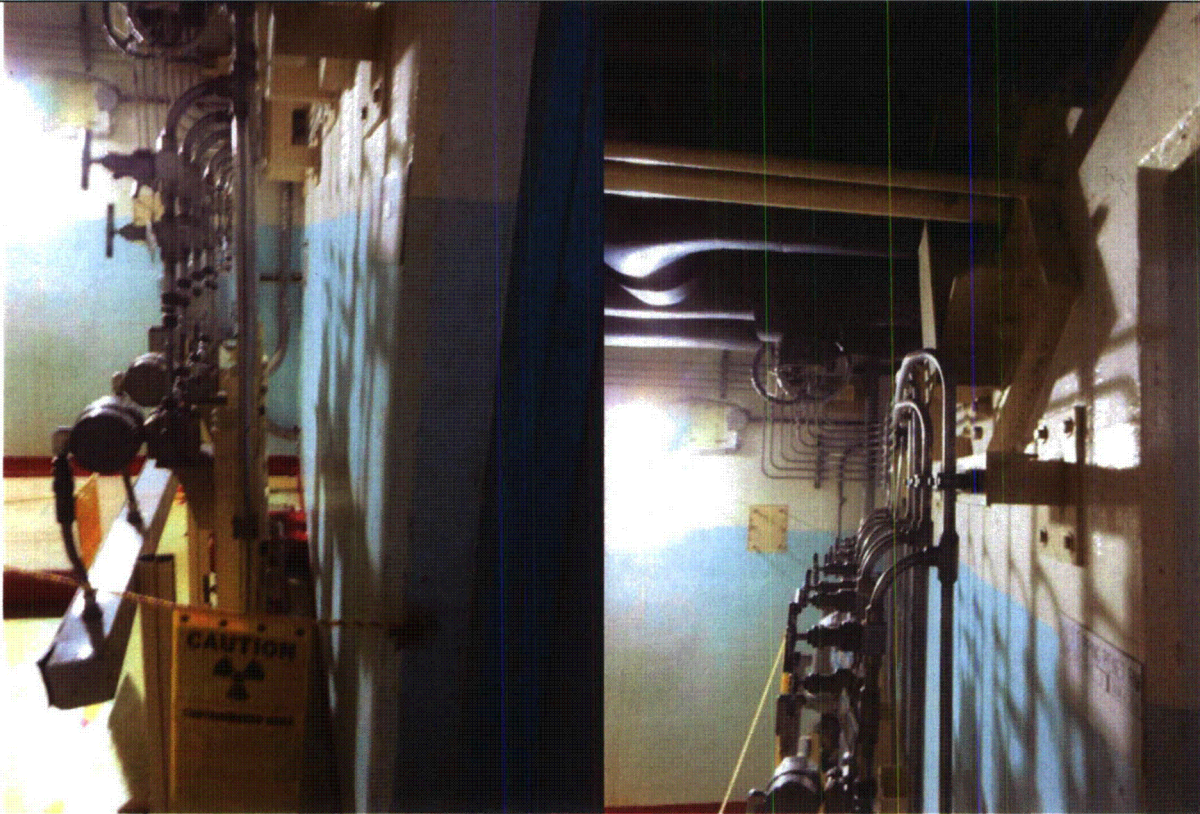
Status: Y N U

Seismic Walkdown Checklist (SWC)

Equipment ID No.: 2FT322

Equipment Class: (20) Instrumentation and Control Panels and Cabinets

Equipment Description: LPSI FLOW TO LOOP 22B



2FT322 8-6-12 135

2FT322 8-6-12 136

ATTACHMENT 3
WALKDOWN CHECKLISTS

Status: Y N U

Seismic Walkdown Checklist (SWC)

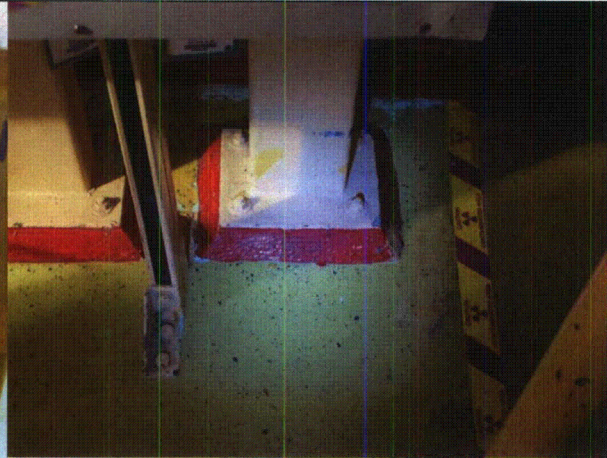
Equipment ID No.: 2FT322

Equipment Class: (20) Instrumentation and Control Panels and Cabinets

Equipment Description: LPSI FLOW TO LOOP 22B



2FT322 8-6-12 137



2FT322 8-6-12 138

ATTACHMENT 3
WALKDOWN CHECKLISTS

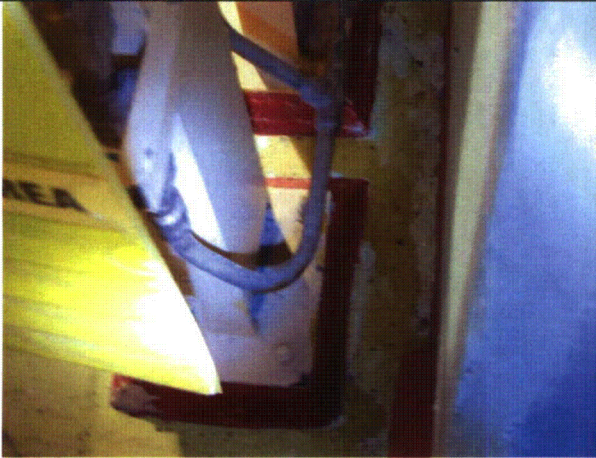
Status: Y N U

Seismic Walkdown Checklist (SWC)

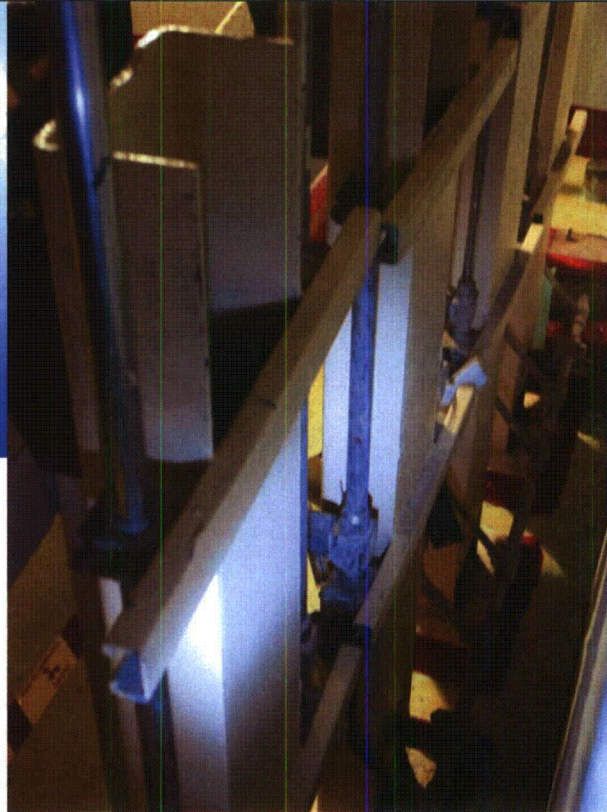
Equipment ID No.: 2FT322

Equipment Class: (20) Instrumentation and Control Panels and Cabinets

Equipment Description: LPSI FLOW TO LOOP 22B



2FT322 8-6-12 139



2FT322 8-6-12 140

ATTACHMENT 3

WALKDOWN CHECKLISTS

Status: Y N U

Seismic Walkdown Checklist (SWC)

Equipment ID No.: 2FT322

Equipment Class: (20) Instrumentation and Control Panels and Cabinets

Equipment Description: LPSI FLOW TO LOOP 22B



2FT322 8-6-12 142

2FT322 8-6-12 141

ATTACHMENT 3
WALKDOWN CHECKLISTS

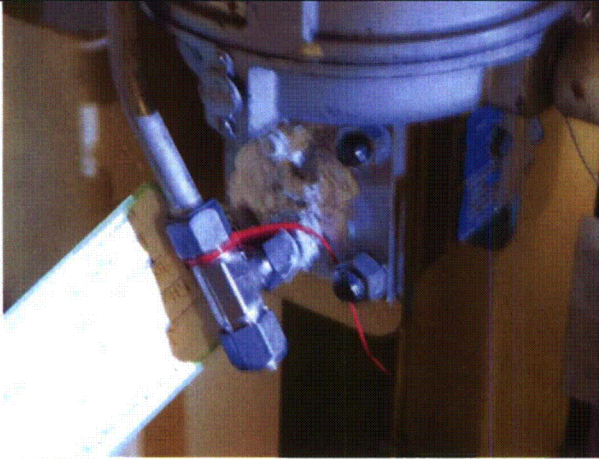
Status: Y N U

Seismic Walkdown Checklist (SWC)

Equipment ID No.: 2FT322

Equipment Class: (20) Instrumentation and Control Panels and Cabinets

Equipment Description: LPSI FLOW TO LOOP 22B



2FT322 8-6-12 143



2FT322 8-6-12 144

ATTACHMENT 3
WALKDOWN CHECKLISTS

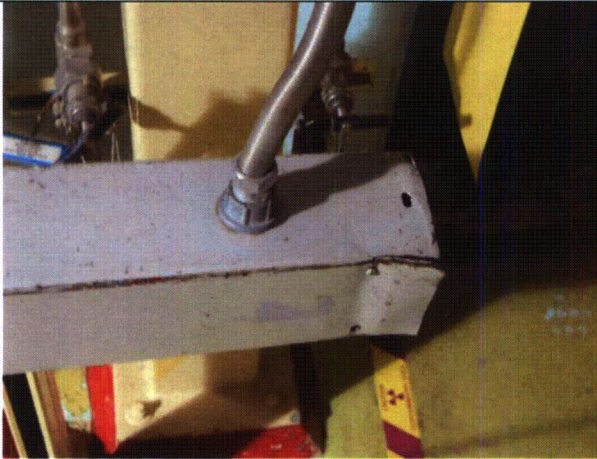
Status: Y N U

Seismic Walkdown Checklist (SWC)

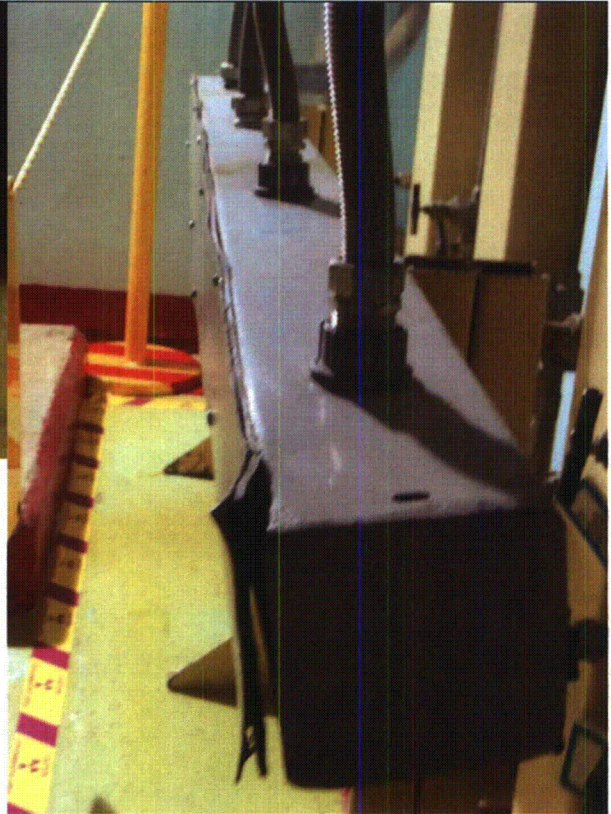
Equipment ID No.: 2FT322

Equipment Class: (20) Instrumentation and Control Panels and Cabinets

Equipment Description: LPSI FLOW TO LOOP 22B



2FT322 8-6-12 145



2FT322 8-6-12 146