

**ATTACHMENT 3**  
**WALKDOWN CHECKLISTS**

---

Status:  Y  N  U

**Seismic Walkdown Checklist (SWC)**

Equipment ID No.: 2GDHVAC/A-228

Equipment Class: (10) Air Handlers

Equipment Description: 21 SWGR HVAC DISCH GRAV DMPR

Project: CCNPP 2 SWEL

Location (Bldg, Elev, Room/Area): AUX, 70.00 ft, CAL-AB-526

Manufacturer/Model: \_\_\_\_\_

**Instructions for Completing Checklist**

This checklist may be used to document the results of the Seismic Walkdown of an item of equipment on the SWEL. The space below each of the following questions may be used to record the results of judgments and findings. Additional space is provided at the end of this checklist for documenting other comments.

**Anchorage**

1. Is anchorage configuration verification required (i.e., is the item one of the 50% of SWEL items requiring such verification)? No  
*Inline damper with ductwork to 21SWGRHVAC.*
  
2. Is the anchorage free of bent, broken, missing or loose hardware? Not Applicable
  
3. Is the anchorage free of corrosion that is more than mild surface oxidation? Not Applicable
  
4. Is the anchorage free of visible cracks in the concrete near the anchors? Not Applicable
  
5. Is the anchorage configuration consistent with plant documentation? (Note: This question only applies if the item is one of the 50% for which an anchorage configuration verification is required.) Not Applicable
  
6. Based on the above anchorage evaluations, is the anchorage free of potentially adverse seismic conditions? Yes

**ATTACHMENT 3**  
**WALKDOWN CHECKLISTS**

---

Status:  Y  N  U

**Seismic Walkdown Checklist (SWC)**

Equipment ID No.: 2GDHVAC/A-228

Equipment Class: (10) Air Handlers

Equipment Description: 21 SWGR HVAC DISCH GRAV DMPR

---

**Interaction Effects**

7. Are soft targets free from impact by nearby equipment or structures? Yes
8. Are overhead equipment, distribution systems, ceiling tiles and lighting, and masonry block walls not likely to collapse onto the equipment? Yes
9. Do attached lines have adequate flexibility to avoid damage? Yes
10. Based on the above seismic interaction evaluations, is equipment free of potentially adverse seismic interaction effects? Yes
- 

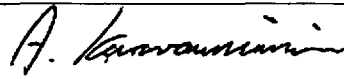
**Other Adverse Conditions**

11. Have you looked for and found no adverse seismic conditions that could adversely affect the safety functions of the equipment? Yes
- 

**Comments**

---

Evaluated by:



A. Karavoussianis

Date: 11/09/2012



C. Figliolini

11/09/2012

---

**Photos**

---



**ATTACHMENT 3**  
**WALKDOWN CHECKLISTS**

---

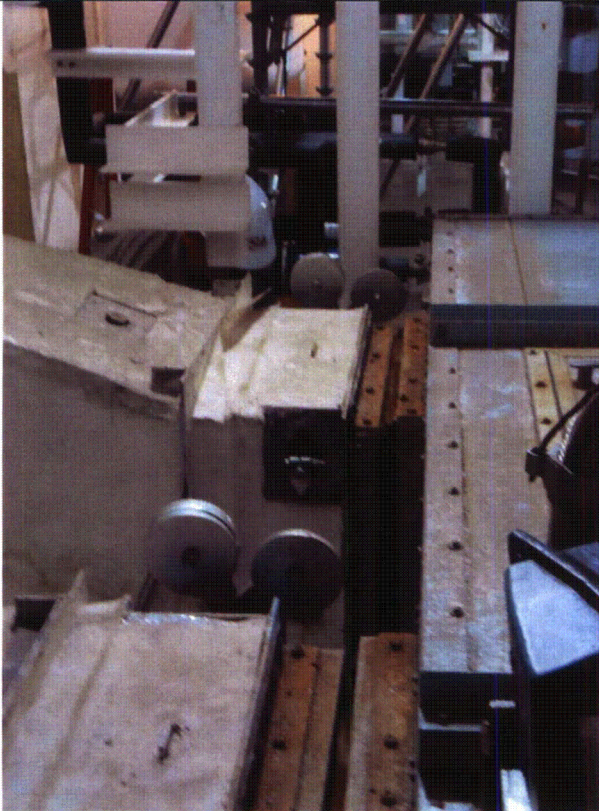
Status:  Y  N  U

**Seismic Walkdown Checklist (SWC)**

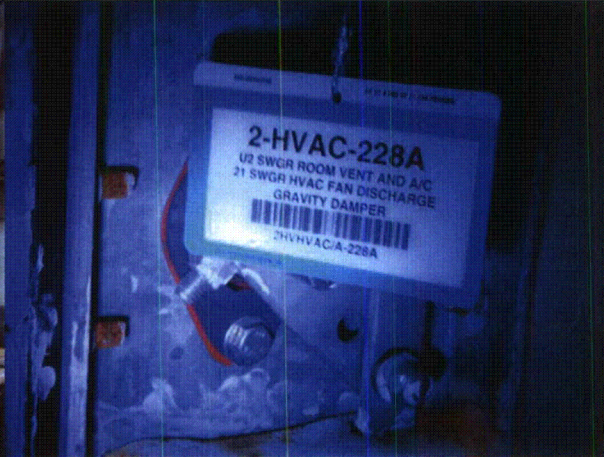
Equipment ID No.: 2GDHVAC/A-228

Equipment Class: (10) Air Handlers

Equipment Description: 21 SWGR HVAC DISCH GRAV DMPR



2GDHVAC#A-228 8-9-12 182



2GDHVAC#A-228 8-9-12 183



**ATTACHMENT 3**  
**WALKDOWN CHECKLISTS**

---

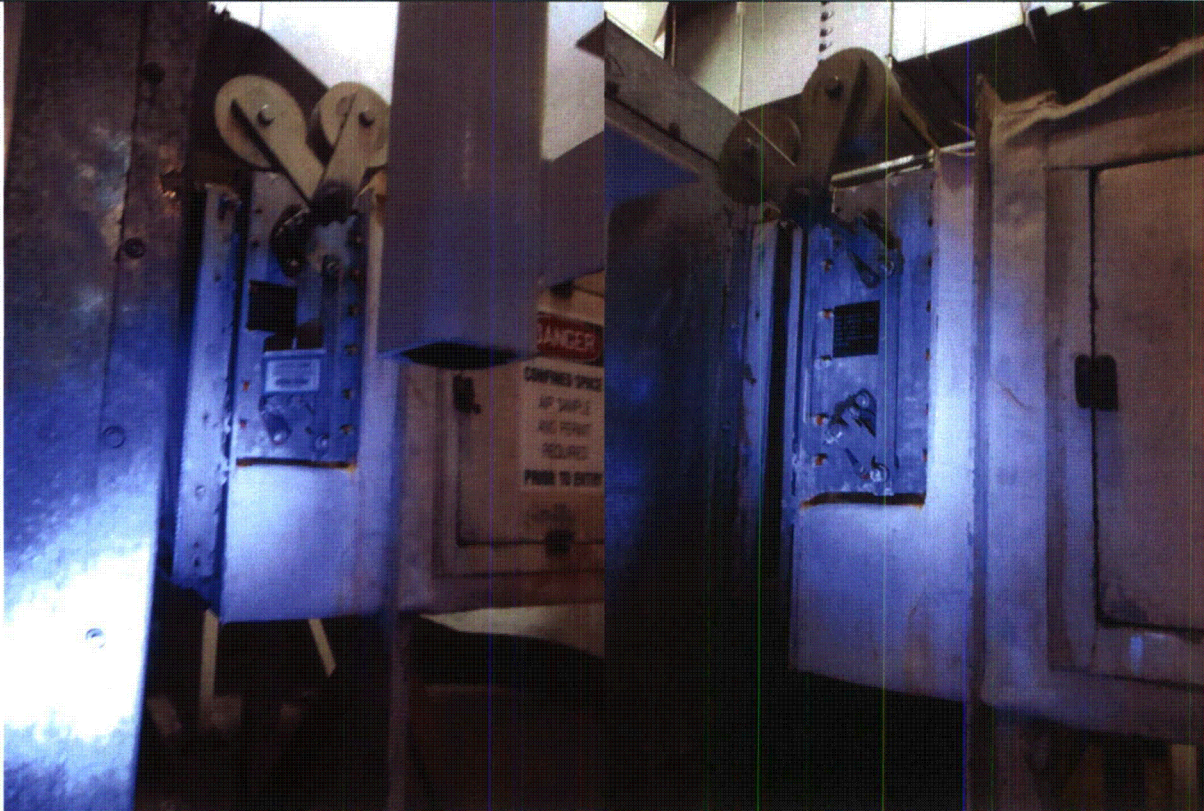
Status:  Y  N  U

**Seismic Walkdown Checklist (SWC)**

Equipment ID No.: 2GDHVAC/A-228

Equipment Class: (10) Air Handlers

Equipment Description: 21 SWGR HVAC DISCH GRAV DMPR



2GDHVAC#A-228 8-9-12 184

2GDHVAC#A-228 8-9-12 185



2GDHVAC#A-228 8-9-12 186

2GDHVAC#A-228 8-9-12 187

**ATTACHMENT 3**  
**WALKDOWN CHECKLISTS**

---

Status: Y  N  U

**Seismic Walkdown Checklist (SWC)**

Equipment ID No.: 2HS5204A

Equipment Class: (0) Other

Equipment Description: SW AIR COMPR 21 CONTROL

Project: CCNPP 2 SWEL

Location (Bldg, Elev, Room/Area): AUX, 70.00 ft, CAL-AB-532

Manufacturer/Model: \_\_\_\_\_

**Instructions for Completing Checklist**

This checklist may be used to document the results of the Seismic Walkdown of an item of equipment on the SWEL. The space below each of the following questions may be used to record the results of judgments and findings. Additional space is provided at the end of this checklist for documenting other comments.

**Anchorage**

1. Is anchorage configuration verification required (i.e., is the item one of the 50% of SWEL items requiring such verification)? Yes  
*2HS5204A is on panel 2N1405*
  
2. Is the anchorage free of bent, broken, missing or loose hardware? Yes
  
3. Is the anchorage free of corrosion that is more than mild surface oxidation? Yes
  
4. Is the anchorage free of visible cracks in the concrete near the anchors? Yes
  
5. Is the anchorage configuration consistent with plant documentation? (Note: This question only applies if the item is one of the 50% for which an anchorage configuration verification is required.) No  
*The controls are mounted on a 7-1/4"x12"x16" electrical box (2N1405). The box is mount on two L4x4x1/4" vertical angles by two 3/8" bolts per angle. The bottom of the box is approximately 40" above the floor. The L4 vertical angles are welded to a 1/2"x7"x15" base plate by a 3/16 all around fillet weld. The base plates are weld to embedded plates by a 1/4" fillet weld along the base plates' 7" side with 1" long return welds.*

*The anchorage is not consistent with drawing 91061 sheet 3. The drawing*

**ATTACHMENT 3**  
**WALKDOWN CHECKLISTS**

---

Status: Y  N  U

**Seismic Walkdown Checklist (SWC)**

Equipment ID No.: 2HS5204A

Equipment Class: (0) Other

Equipment Description: SW AIR COMPR 21 CONTROL

*shows 3/16" welds along the base plates' 15" side with returns (i.e. along the 7" sides). CR-2012-009711*

6. Based on the above anchorage evaluations, is the anchorage free of potentially adverse seismic conditions? No

---

**Interaction Effects**

7. Are soft targets free from impact by nearby equipment or structures? Yes
8. Are overhead equipment, distribution systems, ceiling tiles and lighting, and masonry block walls not likely to collapse onto the equipment? Yes
9. Do attached lines have adequate flexibility to avoid damage? Yes
10. Based on the above seismic interaction evaluations, is equipment free of potentially adverse seismic interaction effects? Yes

---

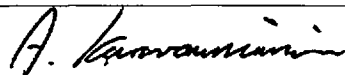
**Other Adverse Conditions**

11. Have you looked for and found no adverse seismic conditions that could adversely affect the safety functions of the equipment? Yes

---

**Comments**

Evaluated by:



A. Karavoussianis

Date: 11/09/2012



**ATTACHMENT 3**  
**WALKDOWN CHECKLISTS**

---

Status: Y  N  U

**Seismic Walkdown Checklist (SWC)**

Equipment ID No.: 2HS5204A

Equipment Class: (0) Other

Equipment Description: SW AIR COMPR 21 CONTROL

---

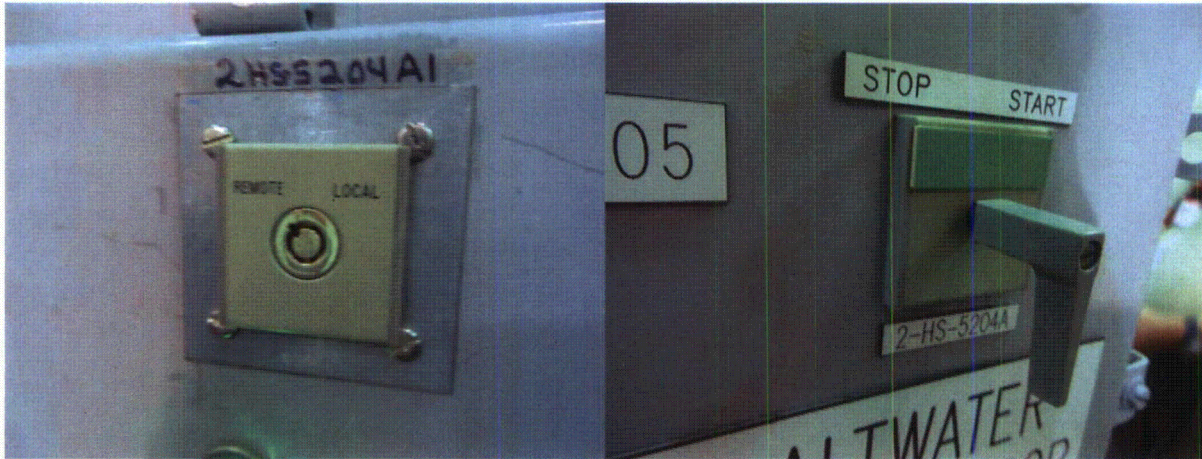


C. Figliolini

11/09/2012

---

**Photos**



2HS5204A 8-9-12 086

2HS5204A 8-9-12 087

---

**ATTACHMENT 3**  
**WALKDOWN CHECKLISTS**

---

Status: Y  N  U

**Seismic Walkdown Checklist (SWC)**

Equipment ID No.: 2HS5204A

Equipment Class: (0) Other

Equipment Description: SW AIR COMPR 21 CONTROL



2HS5204A 8-9-12 088

2HS5204A 8-9-12 089



**ATTACHMENT 3**  
**WALKDOWN CHECKLISTS**

---

Status: Y  N  U

**Seismic Walkdown Checklist (SWC)**

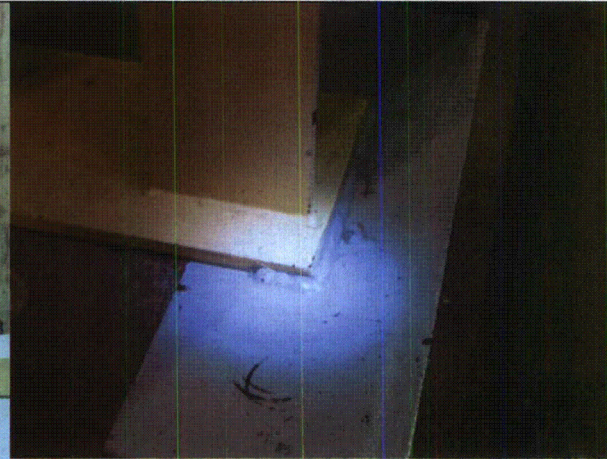
Equipment ID No.: 2HS5204A

Equipment Class: (0) Other

Equipment Description: SW AIR COMPR 21 CONTROL



2HS5204A 8-9-12 090



2HS5204A 8-9-12 091

**ATTACHMENT 3**  
**WALKDOWN CHECKLISTS**

---

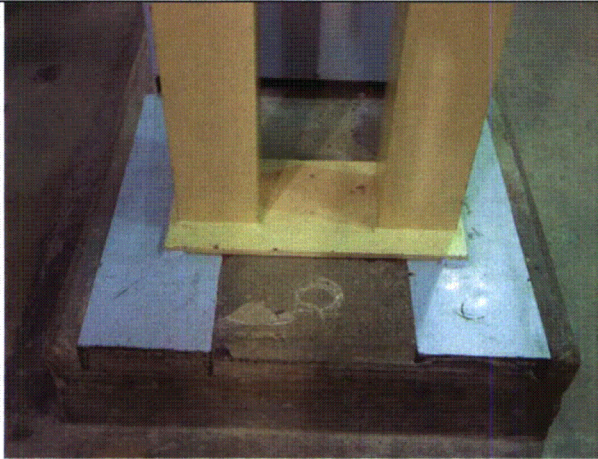
Status: Y  N  U

**Seismic Walkdown Checklist (SWC)**

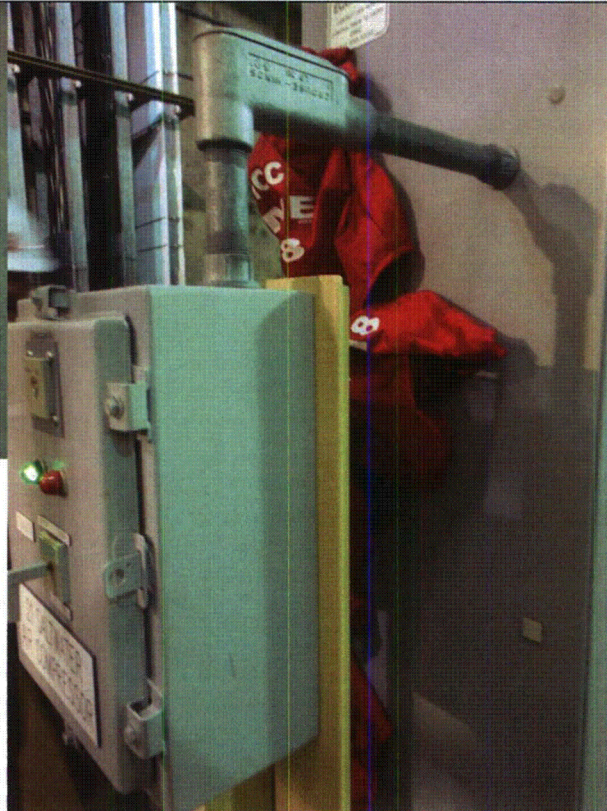
Equipment ID No.: 2HS5204A

Equipment Class: (0) Other

Equipment Description: SW AIR COMPR 21 CONTROL



2HS5204A 8-9-12 092



2HS5204A 8-9-12 093



2HS5204A 8-9-12 094

---

**References**



**ATTACHMENT 3**  
**WALKDOWN CHECKLISTS**

---

Status: Y  N  U

**Seismic Walkdown Checklist (SWC)**

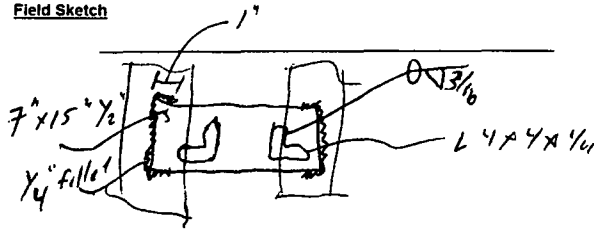
Equipment ID No.: 2HS5204A

Equipment Class: (0) Other

Equipment Description: SW AIR COMPR 21 CONTROL

---

Field Sketch



**2HS5204A SWC WALK-DOWN FIELD SKETCH**

---

**ATTACHMENT 3**  
**WALKDOWN CHECKLISTS**

---

Status:  Y  N  U

**Seismic Walkdown Checklist (SWC)**

Equipment ID No.: 2HS5204A1

Equipment Class: (0) Other

Equipment Description: 21 SWAC LCL/REMOTE HS

Project: CCNPP 2 SWEL

Location (Bldg, Elev, Room/Area): AUX, 70.00 ft, CAL-AB-532

Manufacturer/Model: \_\_\_\_\_

**Instructions for Completing Checklist**

This checklist may be used to document the results of the Seismic Walkdown of an item of equipment on the SWEL. The space below each of the following questions may be used to record the results of judgments and findings. Additional space is provided at the end of this checklist for documenting other comments.

**Anchorage**

1. Is anchorage configuration verification required (i.e., is the item one of the 50% of SWEL items requiring such verification)? No  
*2HS5204A1 is on panel 2N1405*
  
2. Is the anchorage free of bent, broken, missing or loose hardware? Not Applicable
  
3. Is the anchorage free of corrosion that is more than mild surface oxidation? Not Applicable
  
4. Is the anchorage free of visible cracks in the concrete near the anchors? Not Applicable
  
5. Is the anchorage configuration consistent with plant documentation? (Note: This question only applies if the item is one of the 50% for which an anchorage configuration verification is required.) Not Applicable
  
6. Based on the above anchorage evaluations, is the anchorage free of potentially adverse seismic conditions? Yes

**ATTACHMENT 3**  
**WALKDOWN CHECKLISTS**

---

Status:  Y  N  U

**Seismic Walkdown Checklist (SWC)**

Equipment ID No.: 2HS5204A1

Equipment Class: (0) Other

Equipment Description: 21 SWAC LCL/REMOTE HS

---

**Interaction Effects**

7. Are soft targets free from impact by nearby equipment or structures? Yes
8. Are overhead equipment, distribution systems, ceiling tiles and lighting, and masonry block walls not likely to collapse onto the equipment? Yes
9. Do attached lines have adequate flexibility to avoid damage? Yes
10. Based on the above seismic interaction evaluations, is equipment free of potentially adverse seismic interaction effects? Yes
- 

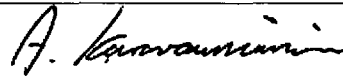
**Other Adverse Conditions**

11. Have you looked for and found no adverse seismic conditions that could adversely affect the safety functions of the equipment? Yes
- 

**Comments**

---

Evaluated by:



A. Karavoussianis

Date: 11/09/2012



C. Figliolini

11/09/2012

---

**Photos**

---

**ATTACHMENT 3**  
**WALKDOWN CHECKLISTS**

---

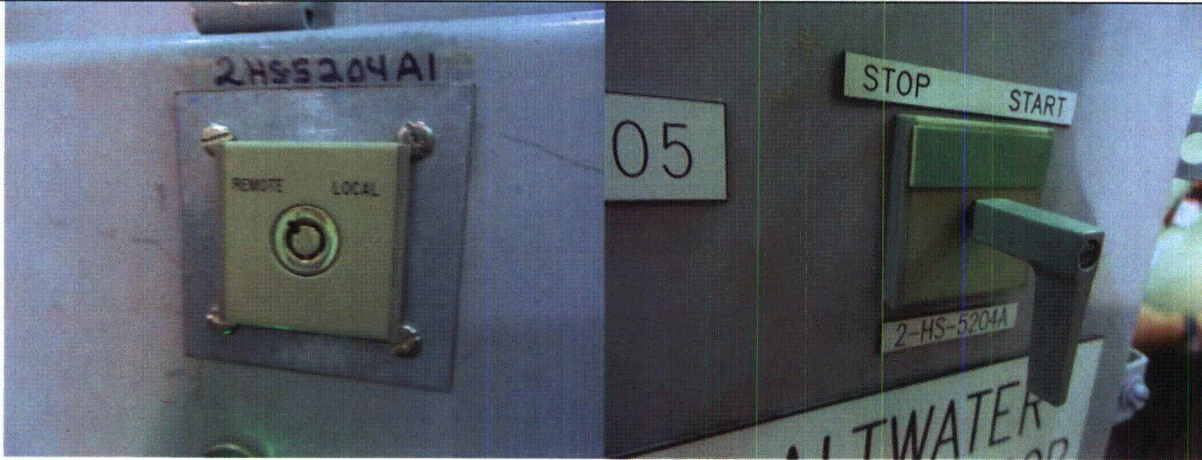
Status:  Y  N  U

**Seismic Walkdown Checklist (SWC)**

Equipment ID No.: 2HS5204A1

Equipment Class: (0) Other

Equipment Description: 21 SWAC LCL/REMOTE HS



2HS5204A1 8-9-12 086

2HS5204A1 8-9-12 087



2HS5204A1 8-9-12 088

2HS5204A1 8-9-12 089



# ATTACHMENT 3

## WALKDOWN CHECKLISTS

---

Status:  Y  N  U

### Seismic Walkdown Checklist (SWC)

Equipment ID No.: 2HS5204A1

---

Equipment Class: (0) Other

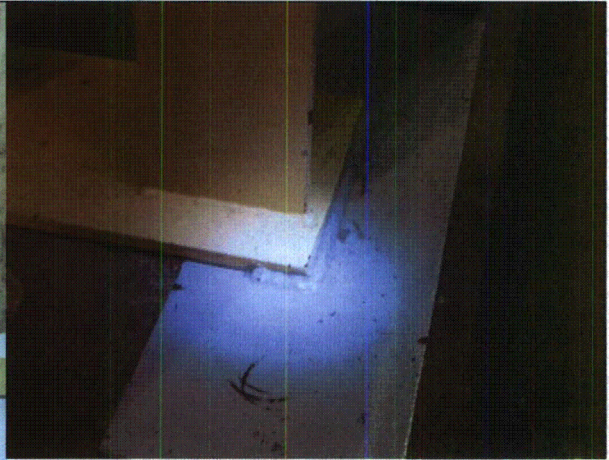
---

Equipment Description: 21 SWAC LCL/REMOTE HS

---



2HS5204A1 8-9-12 090



2HS5204A1 8-9-12 091

**ATTACHMENT 3**  
**WALKDOWN CHECKLISTS**

---

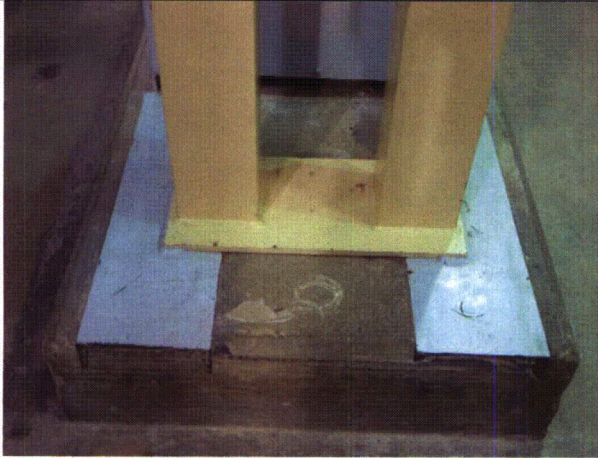
Status:  Y  N  U

**Seismic Walkdown Checklist (SWC)**

Equipment ID No.: 2HS5204A1

Equipment Class: (0) Other

Equipment Description: 21 SWAC LCL/REMOTE HS



2HS5204A1 8-9-12 092



2HS5204A1 8-9-12 093



2HS5204A1 8-9-12 094



# ATTACHMENT 3

## WALKDOWN CHECKLISTS

---

Status:  Y  N  U

### Seismic Walkdown Checklist (SWC)

Equipment ID No.: 2HXBD22

Equipment Class: (21) Tanks and Heat Exchangers

Equipment Description: BLOWDOWN HEAT EXCHANGER 22

Project: CCNPP 2 SWEL

Location (Bldg, Elev, Room/Area): AUX, 5.00 ft, CAL-AB-206

Manufacturer/Model: \_\_\_\_\_

### Instructions for Completing Checklist

This checklist may be used to document the results of the Seismic Walkdown of an item of equipment on the SWEL. The space below each of the following questions may be used to record the results of judgments and findings. Additional space is provided at the end of this checklist for documenting other comments.

### Anchorage

1. Is anchorage configuration verification required (i.e., is the item one of the 50% of SWEL items requiring such verification)? No
  
2. Is the anchorage free of bent, broken, missing or loose hardware? Yes
  
3. Is the anchorage free of corrosion that is more than mild surface oxidation? Yes
  
4. Is the anchorage free of visible cracks in the concrete near the anchors? Yes
  
5. Is the anchorage configuration consistent with plant documentation? (Note: This question only applies if the item is one of the 50% for which an anchorage configuration verification is required.) Not Applicable
  
6. Based on the above anchorage evaluations, is the anchorage free of potentially adverse seismic conditions? Yes

**ATTACHMENT 3**  
**WALKDOWN CHECKLISTS**

---

Status:  Y  N  U

**Seismic Walkdown Checklist (SWC)**

Equipment ID No.: 2HXBD22

Equipment Class: (21) Tanks and Heat Exchangers

Equipment Description: BLOWDOWN HEAT EXCHANGER 22

---

**Interaction Effects**


7. Are soft targets free from impact by nearby equipment or structures? Yes
8. Are overhead equipment, distribution systems, ceiling tiles and lighting, and masonry block walls not likely to collapse onto the equipment? Yes
9. Do attached lines have adequate flexibility to avoid damage? Yes  
*Tubing and instrument is mounted on a stanchion that is supported on the floor. There is adequate flexibility therefore not a seismic concern.*
10. Based on the above seismic interaction evaluations, is equipment free of potentially adverse seismic interaction effects? Yes
- 


**Other Adverse Conditions**

11. Have you looked for and found no adverse seismic conditions that could adversely affect the safety functions of the equipment? Yes
- 

**Comments**

---

Evaluated by:  A. Karavoussianis Date: 11/09/2012

 11/09/2012

---

**Photos**

---



**ATTACHMENT 3**  
**WALKDOWN CHECKLISTS**

---

Status:  Y  N  U

**Seismic Walkdown Checklist (SWC)**

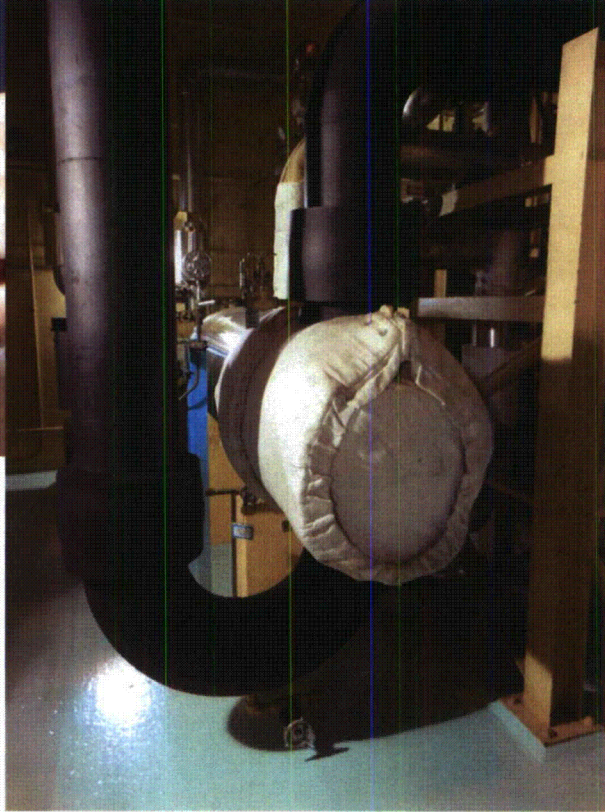
Equipment ID No.: 2HXBD22

Equipment Class: (21) Tanks and Heat Exchangers

Equipment Description: BLOWDOWN HEAT EXCHANGER 22



2HXBD22 8-7-12 123



2HXBD22 8-7-12 124

**ATTACHMENT 3**  
**WALKDOWN CHECKLISTS**

---

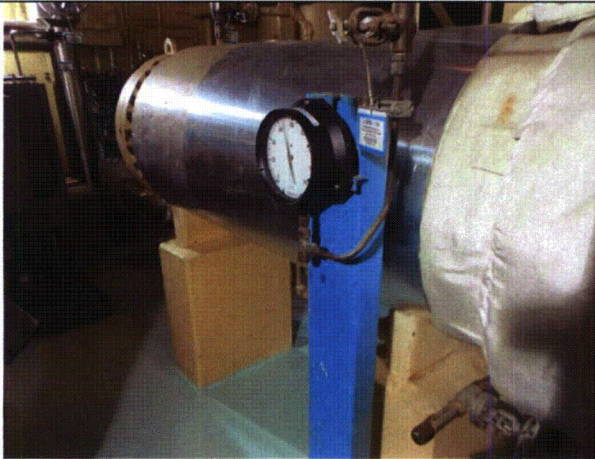
Status:  Y  N  U

**Seismic Walkdown Checklist (SWC)**

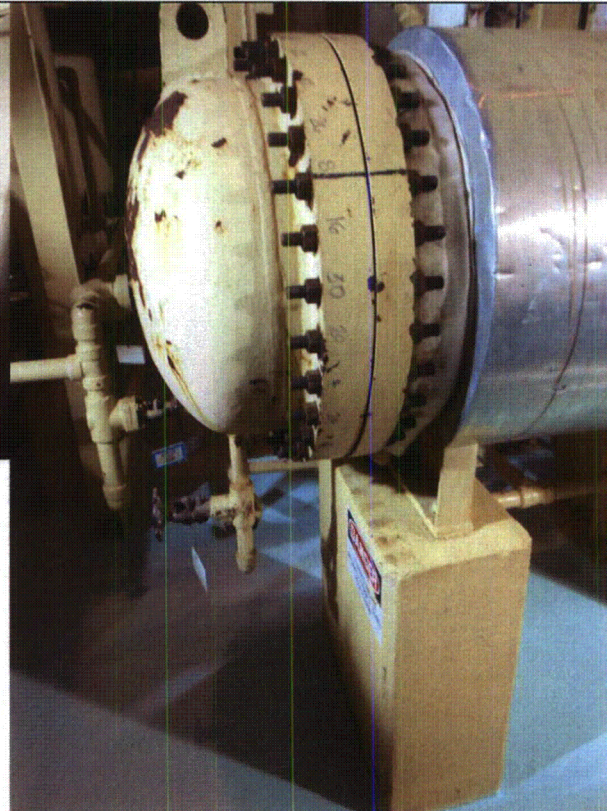
Equipment ID No.: 2HXBD22

Equipment Class: (21) Tanks and Heat Exchangers

Equipment Description: BLOWDOWN HEAT EXCHANGER 22



2HXBD22 8-7-12 125



2HXBD22 8-7-12 126



**ATTACHMENT 3**  
**WALKDOWN CHECKLISTS**

---

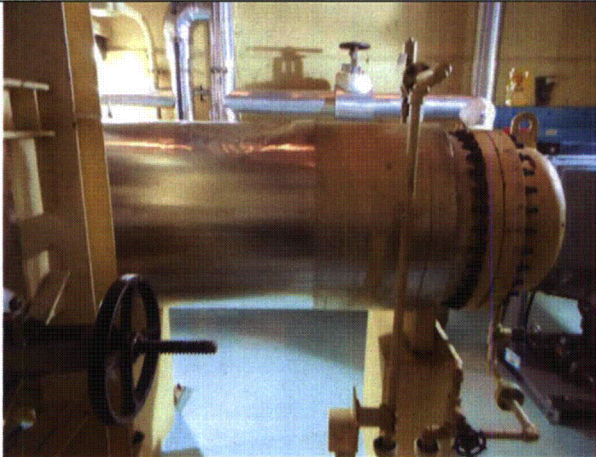
Status:  Y  N  U

**Seismic Walkdown Checklist (SWC)**

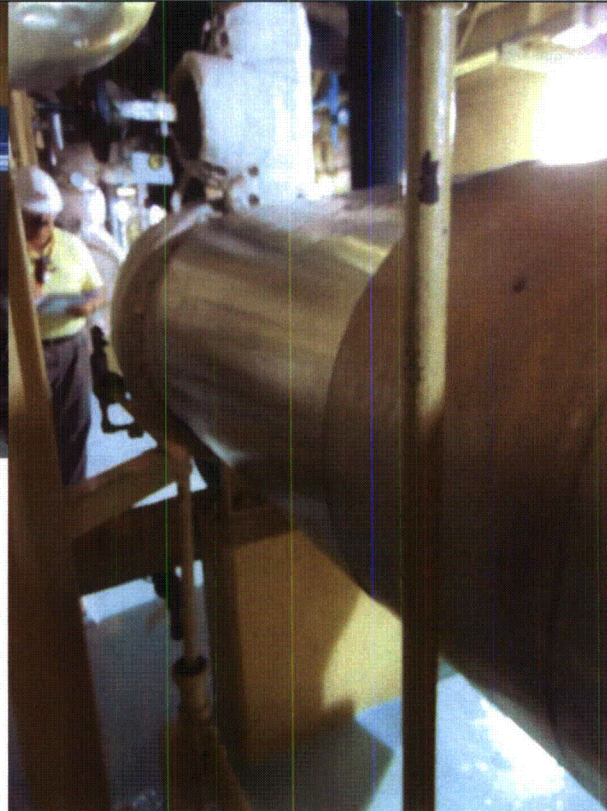
Equipment ID No.: 2HXBD22

Equipment Class: (21) Tanks and Heat Exchangers

Equipment Description: BLOWDOWN HEAT EXCHANGER 22



2HXBD22 8-7-12 127



2HXBD22 8-7-12 128

**ATTACHMENT 3**  
**WALKDOWN CHECKLISTS**

---

Status:  Y  N  U

**Seismic Walkdown Checklist (SWC)**

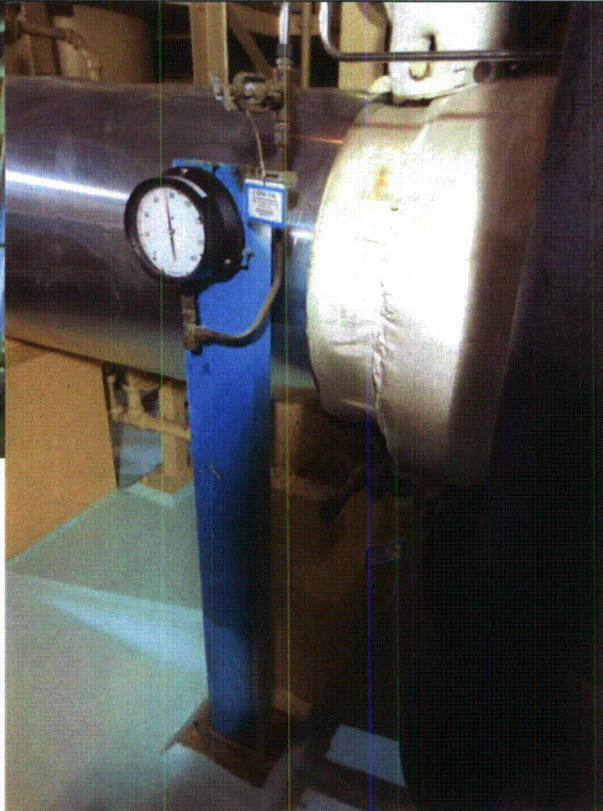
Equipment ID No.: 2HXBD22

Equipment Class: (21) Tanks and Heat Exchangers

Equipment Description: BLOWDOWN HEAT EXCHANGER 22



2HXBD22 8-7-12 129



2HXBD22 8-7-12 130

**ATTACHMENT 3**  
**WALKDOWN CHECKLISTS**

---

Status:  Y  N  U

**Seismic Walkdown Checklist (SWC)**

Equipment ID No.: 2HXCC21

Equipment Class: (21) Tanks and Heat Exchangers

Equipment Description: COMPONENT COOLING HEAT EXCH 21

Project: CCNPP 2 SWEL

Location (Bldg, Elev, Room/Area): AUX, 5.00 ft, CAL-AB-201

Manufacturer/Model: \_\_\_\_\_

**Instructions for Completing Checklist**

This checklist may be used to document the results of the Seismic Walkdown of an item of equipment on the SWEL. The space below each of the following questions may be used to record the results of judgments and findings. Additional space is provided at the end of this checklist for documenting other comments.

---

**Anchorage**

1. Is anchorage configuration verification required (i.e., is the item one of the 50% of SWEL items requiring such verification)? Yes
  
  2. Is the anchorage free of bent, broken, missing or loose hardware? Yes
  
  3. Is the anchorage free of corrosion that is more than mild surface oxidation? Yes
  
  4. Is the anchorage free of visible cracks in the concrete near the anchors? Yes
  
  5. Is the anchorage configuration consistent with plant documentation? (Note: This question only applies if the item is one of the 50% for which an anchorage configuration verification is required.) Yes  
*Anchorage is consistent with drawing FSK-C-0084.*
  
  6. Based on the above anchorage evaluations, is the anchorage free of potentially adverse seismic conditions? Yes
-

**ATTACHMENT 3**  
**WALKDOWN CHECKLISTS**

---

Status:  Y  N  U

**Seismic Walkdown Checklist (SWC)**

Equipment ID No.: 2HXCC21

Equipment Class: (21) Tanks and Heat Exchangers

Equipment Description: COMPONENT COOLING HEAT EXCH 21

---

**Interaction Effects**

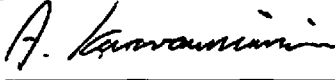
7. Are soft targets free from impact by nearby equipment or structures? Yes
8. Are overhead equipment, distribution systems, ceiling tiles and lighting, and masonry block walls not likely to collapse onto the equipment? Yes  
*The overhead threaded fire piping is judged to be adequately supported and not a concern for spray or flooding.*
9. Do attached lines have adequate flexibility to avoid damage? Yes
10. Based on the above seismic interaction evaluations, is equipment free of potentially adverse seismic interaction effects? Yes
- 


**Other Adverse Conditions**

11. Have you looked for and found no adverse seismic conditions that could adversely affect the safety functions of the equipment? Yes
- 

**Comments**

---

Evaluated by:  A. Karavoussianis Date: 11/09/2012

 C. Figliolini 11/09/2012

---

**Photos**

---



**ATTACHMENT 3**  
**WALKDOWN CHECKLISTS**

---

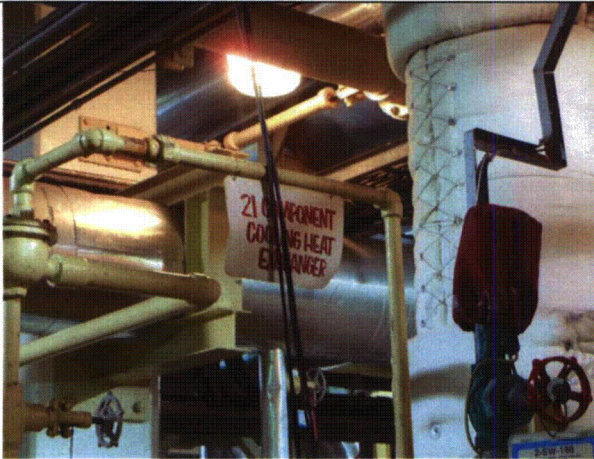
Status:  Y  N  U

**Seismic Walkdown Checklist (SWC)**

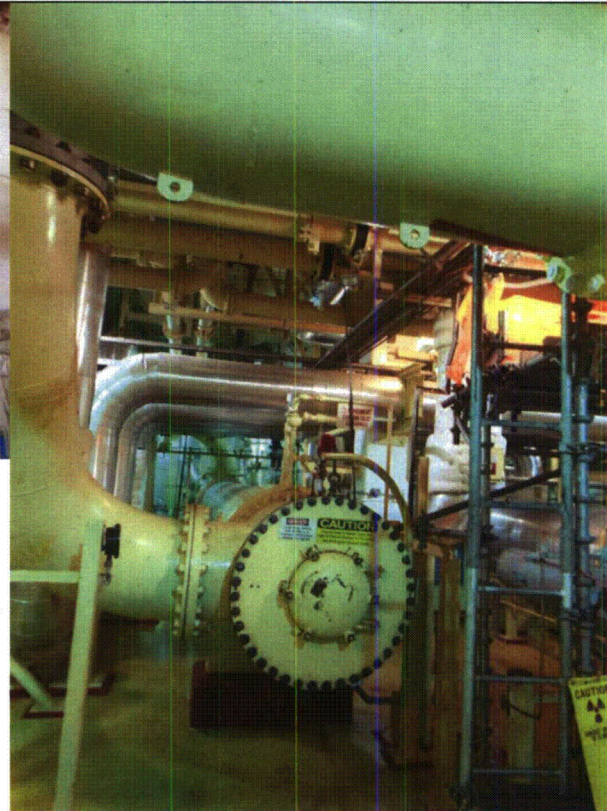
Equipment ID No.: 2HXCC21

Equipment Class: (21) Tanks and Heat Exchangers

Equipment Description: COMPONENT COOLING HEAT EXCH 21



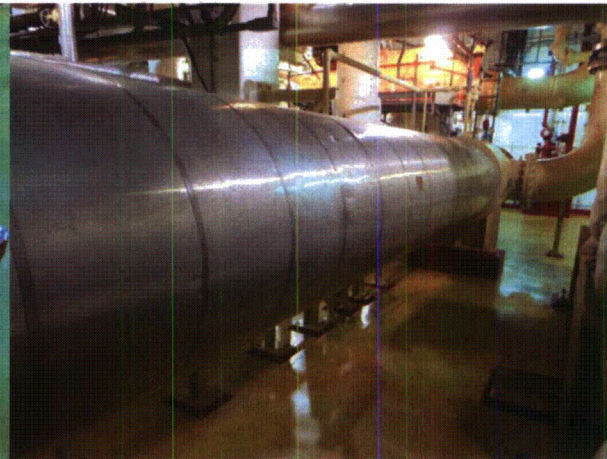
2HXCC21 8-7-12 086



2HXCC21 8-7-12 087



2HXCC21 8-7-12 088



2HXCC21 8-7-12 089



**ATTACHMENT 3**  
**WALKDOWN CHECKLISTS**

---

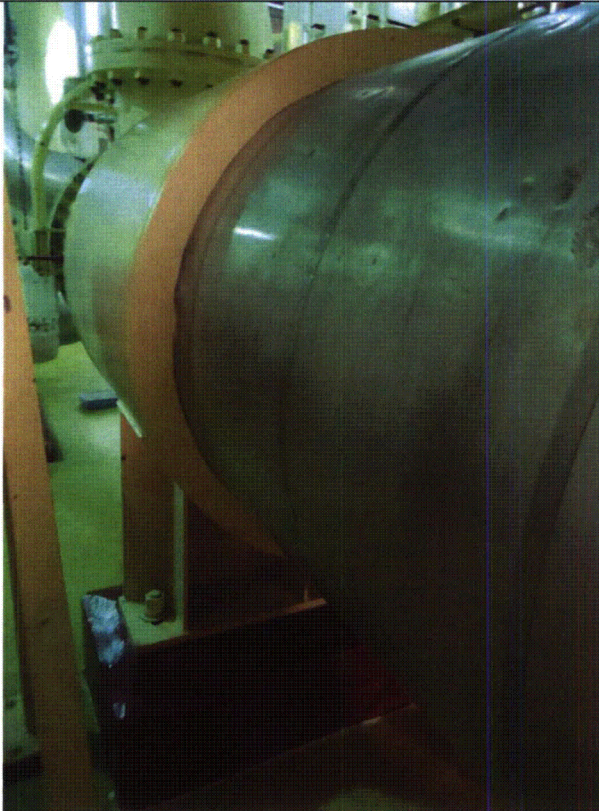
Status:  Y  N  U

**Seismic Walkdown Checklist (SWC)**

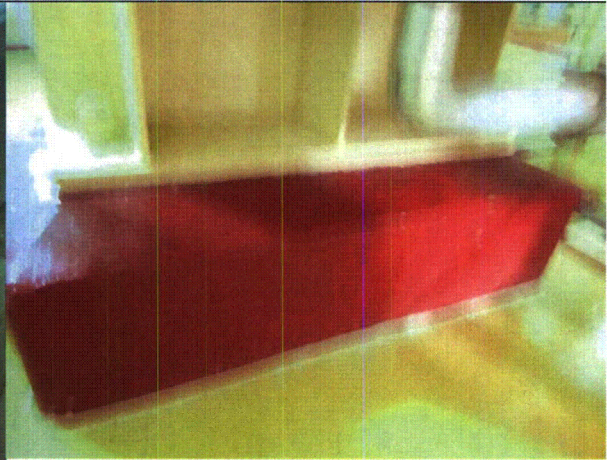
Equipment ID No.: 2HXCC21

Equipment Class: (21) Tanks and Heat Exchangers

Equipment Description: COMPONENT COOLING HEAT EXCH 21



2HXCC21 8-7-12 090



2HXCC21 8-7-12 091



**ATTACHMENT 3**  
**WALKDOWN CHECKLISTS**

---

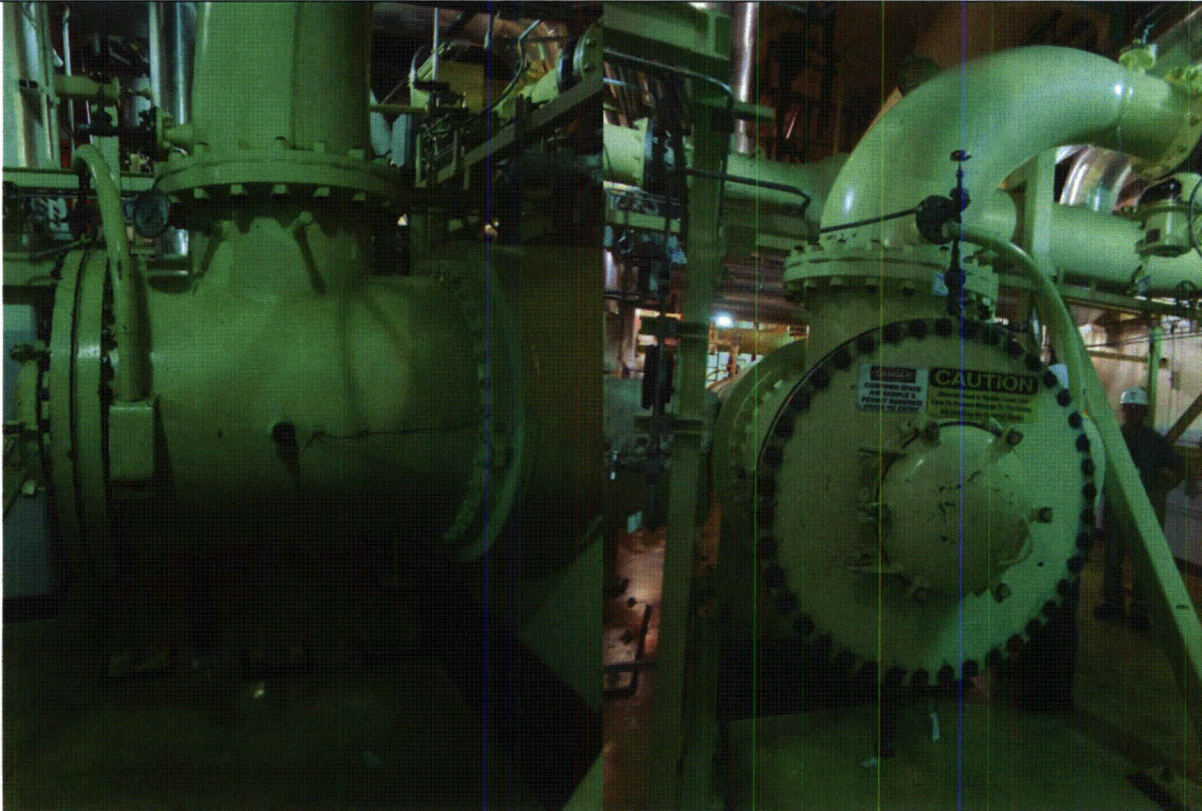
Status:  Y  N  U

**Seismic Walkdown Checklist (SWC)**

Equipment ID No.: 2HXCC21

Equipment Class: (21) Tanks and Heat Exchangers

Equipment Description: COMPONENT COOLING HEAT EXCH 21



2HXCC21 8-7-12 092

2HXCC21 8-7-12 093

**ATTACHMENT 3**  
**WALKDOWN CHECKLISTS**

---

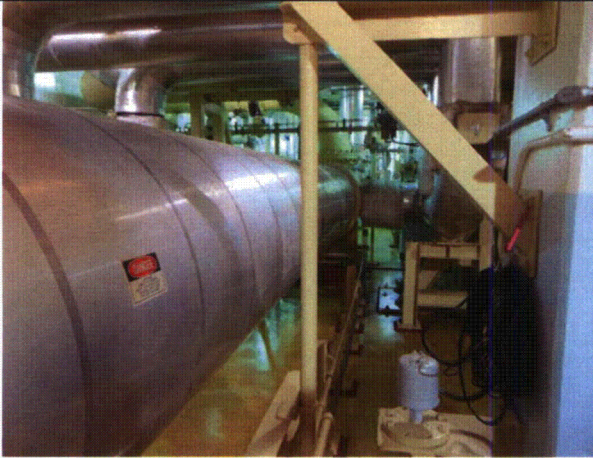
Status:  Y  N  U

**Seismic Walkdown Checklist (SWC)**

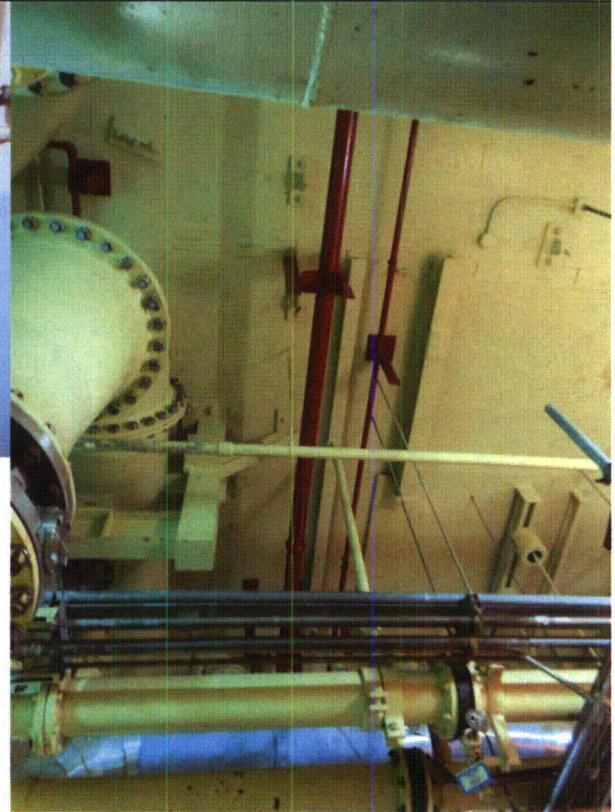
Equipment ID No.: 2HXCC21

Equipment Class: (21) Tanks and Heat Exchangers

Equipment Description: COMPONENT COOLING HEAT EXCH 21



2HXCC21 8-7-12 094



2HXCC21 8-7-12 095

**ATTACHMENT 3**  
**WALKDOWN CHECKLISTS**

---

Status:  Y  N  U

**Seismic Walkdown Checklist (SWC)**

Equipment ID No.: 2HXDSAA/CLR2A

Equipment Class: (21) Tanks and Heat Exchangers

Equipment Description: 2A DG AS COMPR AFT CLR

Project: CCNPP 2 SWEL

Location (Bldg, Elev, Room/Area): AUX, 45.00 ft, CAL-AB-422

Manufacturer/Model: \_\_\_\_\_

**Instructions for Completing Checklist**

This checklist may be used to document the results of the Seismic Walkdown of an item of equipment on the SWEL. The space below each of the following questions may be used to record the results of judgments and findings. Additional space is provided at the end of this checklist for documenting other comments.

---

**Anchorage**

- |   |                |
|---|----------------|
| 1. Is anchorage configuration verification required (i.e., is the item one of the 50% of SWEL items requiring such verification)?<br><i>This HX is inline with 1-3/8" O.D. piping in front of 2A DG Air Compressor.</i> | No             |
| 2. Is the anchorage free of bent, broken, missing or loose hardware?  | Not Applicable |
| 3. Is the anchorage free of corrosion that is more than mild surface oxidation?   | Not Applicable |
| 4. Is the anchorage free of visible cracks in the concrete near the anchors?  | Not Applicable |
| 5. Is the anchorage configuration consistent with plant documentation? (Note: This question only applies if the item is one of the 50% for which an anchorage configuration verification is required.)                  | Not Applicable |
| 6. Based on the above anchorage evaluations, is the anchorage free of potentially adverse seismic conditions?<br><i>HX inline with 1-3/8" O.D. pipe in front of 2A DG Air Compressor.</i>                               | Yes            |
-



**ATTACHMENT 3**  
**WALKDOWN CHECKLISTS**

---

Status:  Y  N  U

**Seismic Walkdown Checklist (SWC)**

Equipment ID No.: 2HXDSAA/CLR2A

Equipment Class: (21) Tanks and Heat Exchangers

Equipment Description: 2A DG AS COMPR AFT CLR

---

**Interaction Effects**

7. Are soft targets free from impact by nearby equipment or structures? Yes
8. Are overhead equipment, distribution systems, ceiling tiles and lighting, and masonry block walls not likely to collapse onto the equipment? Yes  
*Overhead light but will not affect HX therefore not a creditable hazard.  
10/3/12 - Overhead lights were deemed not a credible seismic concern due to their lightweight and typical construction practices. Also, they have been previously evaluated by CCNPP and found seismically acceptable.*
9. Do attached lines have adequate flexibility to avoid damage? Yes
10. Based on the above seismic interaction evaluations, is equipment free of potentially adverse seismic interaction effects? Yes
- 

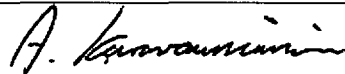
**Other Adverse Conditions**

11. Have you looked for and found no adverse seismic conditions that could adversely affect the safety functions of the equipment? Yes
- 

**Comments**

---

Evaluated by:



A. Karavoussianis

Date: 11/09/2012



C. Figliolini

11/09/2012

---

**Photos**

---

# ATTACHMENT 3

## WALKDOWN CHECKLISTS

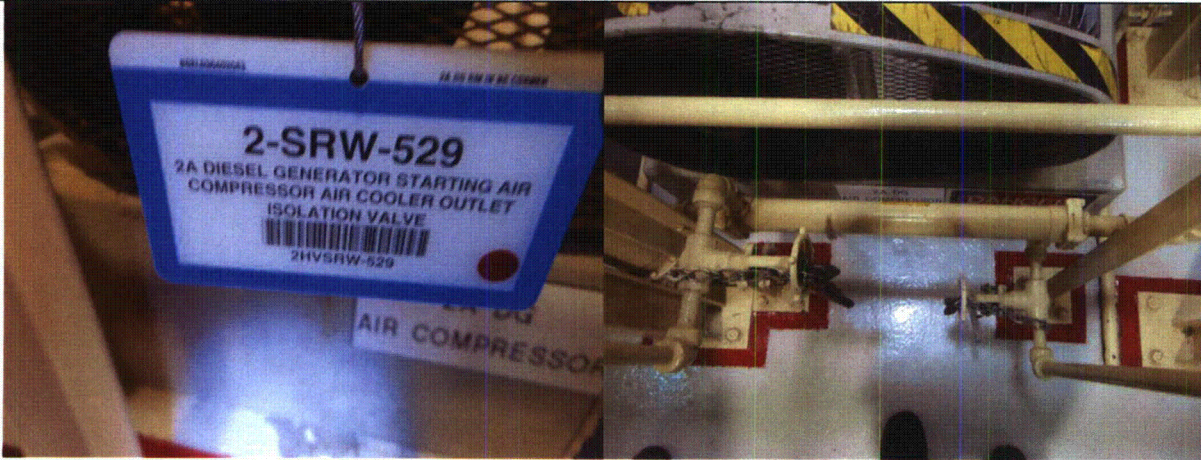
Status:  Y  N  U

### Seismic Walkdown Checklist (SWC)

Equipment ID No.: 2HXDSAA/CLR2A

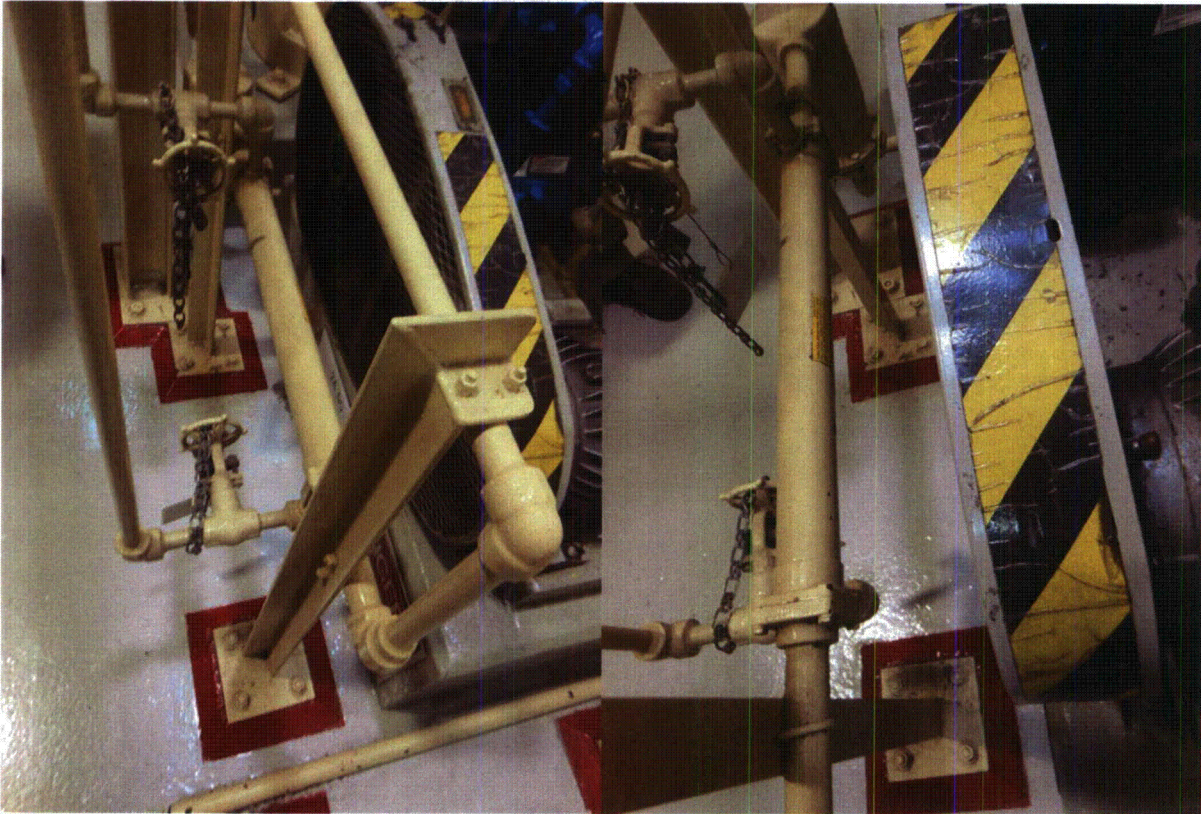
Equipment Class: (21) Tanks and Heat Exchangers

Equipment Description: 2A DG AS COMPR AFT CLR



2HXDSAA#CLR2A 8-13-12 218

2HXDSAA#CLR2A 8-13-12 219



2HXDSAA#CLR2A 8-13-12 220

2HXDSAA#CLR2A 8-13-12 221



**ATTACHMENT 3**  
**WALKDOWN CHECKLISTS**

---

Status:  Y  N  U

**Seismic Walkdown Checklist (SWC)**

Equipment ID No.: 2HXDSAA/CLR2A

Equipment Class: (21) Tanks and Heat Exchangers

Equipment Description: 2A DG AS COMPR AFT CLR



2HXDSAA#CLR2A 8-13-12 223

2HXDSAA#CLR2A 8-13-12 222

**ATTACHMENT 3**  
**WALKDOWN CHECKLISTS**

---

Status:  Y  N  U

**Seismic Walkdown Checklist (SWC)**

Equipment ID No.: 2HXHVACSWGRCU21

Equipment Class: (21) Tanks and Heat Exchangers

Equipment Description: 21 SWGR HVAC CNDSR UNIT

Project: CCNPP 2 SWEL

Location (Bldg, Elev, Room/Area): AUX, 70.00 ft, CAL-AB-ARF

Manufacturer/Model: \_\_\_\_\_

**Instructions for Completing Checklist**

This checklist may be used to document the results of the Seismic Walkdown of an item of equipment on the SWEL. The space below each of the following questions may be used to record the results of judgments and findings. Additional space is provided at the end of this checklist for documenting other comments.

**Anchorage**

1. Is anchorage configuration verification required (i.e., is the item one of the 50% of SWEL items requiring such verification)? Yes
  
2. Is the anchorage free of bent, broken, missing or loose hardware? Yes
  
3. Is the anchorage free of corrosion that is more than mild surface oxidation? Yes
  
4. Is the anchorage free of visible cracks in the concrete near the anchors? Not Applicable  
*Equipment is anchored to steel protruding from roof.*
  
5. Is the anchorage configuration consistent with plant documentation? (Note: This question only applies if the item is one of the 50% for which an anchorage configuration verification is required.) Yes  
*Anchorage is consistent with drawing 15869-0001 SH0001 Rev.0.*
  
6. Based on the above anchorage evaluations, is the anchorage free of potentially adverse seismic conditions? Yes  
*Same anchorage as 1 HXHVACSWGRCU11*

**ATTACHMENT 3  
WALKDOWN CHECKLISTS**

---

Status:  Y  N  U

**Seismic Walkdown Checklist (SWC)**

Equipment ID No.: 2HXHVACSWGRCU21

Equipment Class: (21) Tanks and Heat Exchangers

Equipment Description: 21 SWGR HVAC CNDSR UNIT

---

**Interaction Effects**

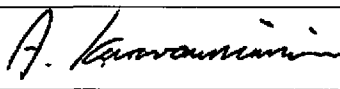
7. Are soft targets free from impact by nearby equipment or structures? Yes
8. Are overhead equipment, distribution systems, ceiling tiles and lighting, and masonry block walls not likely to collapse onto the equipment? Not Applicable
9. Do attached lines have adequate flexibility to avoid damage? Yes
10. Based on the above seismic interaction evaluations, is equipment free of potentially adverse seismic interaction effects? Yes
- 


**Other Adverse Conditions**

11. Have you looked for and found no adverse seismic conditions that could adversely affect the safety functions of the equipment? Yes
- 

**Comments**

---

Evaluated by:  A. Karavoussianis Date: 11/09/2012

 11/09/2012

---

**Photos**

---



**ATTACHMENT 3**  
**WALKDOWN CHECKLISTS**

---

Status:  Y  N  U

**Seismic Walkdown Checklist (SWC)**

Equipment ID No.: 2HXHVACSWGRCU21

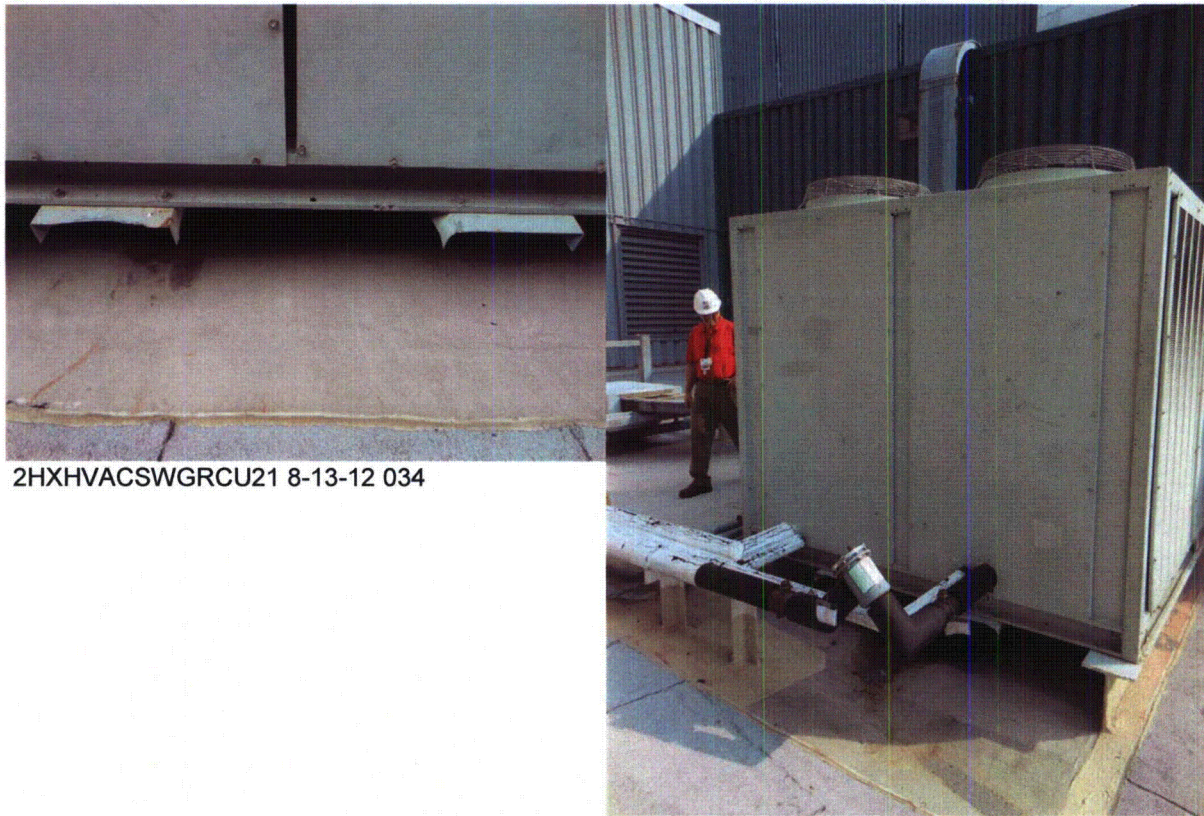
Equipment Class: (21) Tanks and Heat Exchangers

Equipment Description: 21 SWGR HVAC CNDSR UNIT



2HXHVACSWGRCU21 8-13-12 032

2HXHVACSWGRCU21 8-13-12 033



2HXHVACSWGRCU21 8-13-12 034

2HXHVACSWGRCU21 8-13-12 035



# ATTACHMENT 3

## WALKDOWN CHECKLISTS

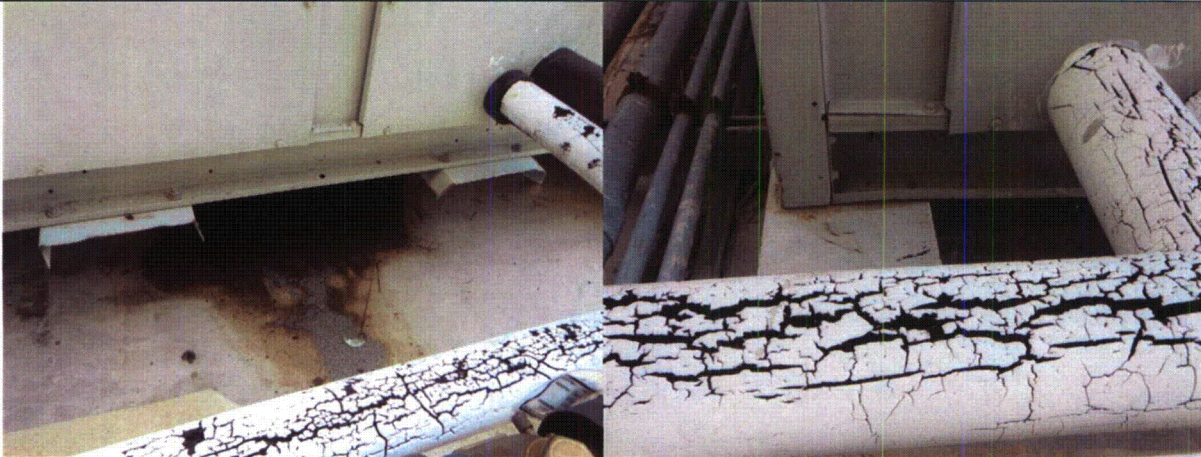
Status:  Y  N  U

### Seismic Walkdown Checklist (SWC)

Equipment ID No.: 2HXHVACSWGRCU21

Equipment Class: (21) Tanks and Heat Exchangers

Equipment Description: 21 SWGR HVAC CNSDR UNIT



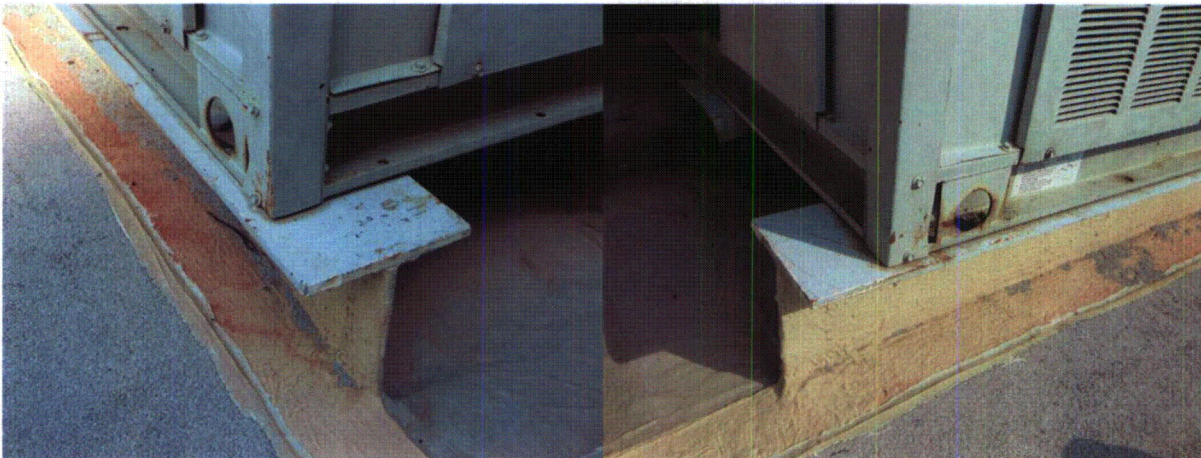
2HXHVACSWGRCU21 8-13-12 036

2HXHVACSWGRCU21 8-13-12 037



2HXHVACSWGRCU21 8-13-12 038

2HXHVACSWGRCU21 8-13-12 039



## ATTACHMENT 3 WALKDOWN CHECKLISTS

Status:  Y  N  U

**Seismic Walkdown Checklist (SWC)**

Equipment ID No.: 2HXHVACSWGRCU21

Equipment Class: (21) Tanks and Heat Exchangers

Equipment Description: 21 SWGR HVAC CNDSR UNIT

2HXHVACSWGRCU21 8-13-12 040

2HXHVACSWGRCU21 8-13-12 041

Status:  Y  N  U

**Seismic Walkdown Checklist (SWC)**

Equipment ID No.: 2HXSrw21A

Equipment Class: (21) Tanks and Heat Exchangers

Equipment Description: 21A SERVICE WATER PHE

Project: CCNPP 2 SWEL

Location (Bldg, Elev, Room/Area): AUX, 5.00 ft, CAL-AB-205

Manufacturer/Model: \_\_\_\_\_

**Instructions for Completing Checklist**

This checklist may be used to document the results of the Seismic Walkdown of an item of equipment on the SWEL. The space below each of the following questions may be used to record the results of judgments and findings. Additional space is provided at the end of this checklist for documenting other comments.

**Anchorage**

- |    |  |                |
|----|--|----------------|
| 1. | Is anchorage configuration verification required (i.e., is the item one of the 50% of SWEL items requiring such verification)?       | No             |
| 2. | Is the anchorage free of bent, broken, missing or loose hardware?  | Yes            |
| 3. | Is the anchorage free of corrosion that is more than mild surface oxidation?<br><br><i>Only mild surface oxidation was observed.</i> | Yes            |
| 4. | Is the anchorage free of visible cracks in the concrete near the anchors?  | Not Applicable |



**ATTACHMENT 3**  
**WALKDOWN CHECKLISTS**

---

Status:  Y  N  U

**Seismic Walkdown Checklist (SWC)**

Equipment ID No.: 2HXSRW21A

Equipment Class: (21) Tanks and Heat Exchangers

Equipment Description: 21A SERVICE WATER PHE

---

5. Is the anchorage configuration consistent with plant documentation? (Note: This question only applies if the item is one of the 50% for which an anchorage configuration verification is required.) Not Applicable
6. Based on the above anchorage evaluations, is the anchorage free of potentially adverse seismic conditions? Yes
- 

**Interaction Effects**

7. Are soft targets free from impact by nearby equipment or structures? Yes
8. Are overhead equipment, distribution systems, ceiling tiles and lighting, and masonry block walls not likely to collapse onto the equipment? Yes
9. Do attached lines have adequate flexibility to avoid damage? Yes
10. Based on the above seismic interaction evaluations, is equipment free of potentially adverse seismic interaction effects? Yes
- 

**Other Adverse Conditions**

11. Have you looked for and found no adverse seismic conditions that could adversely affect the safety functions of the equipment? Yes
- 

**Comments**

---

**ATTACHMENT 3**  
**WALKDOWN CHECKLISTS**

---

Status:  Y  N  U

**Seismic Walkdown Checklist (SWC)**

Equipment ID No.: 2HXSrw21A

Equipment Class: (21) Tanks and Heat Exchangers

Equipment Description: 21A SERVICE WATER PHE

---

Evaluated by:

*A. Karavoussianis*

A. Karavoussianis

Date: 11/09/2012

*C. Figliolini*

C. Figliolini

11/09/2012

---

**Photos**



2HXSrw21A 8-6-12 288



2HXSrw21A 8-6-12 289

---



**ATTACHMENT 3**  
**WALKDOWN CHECKLISTS**

---

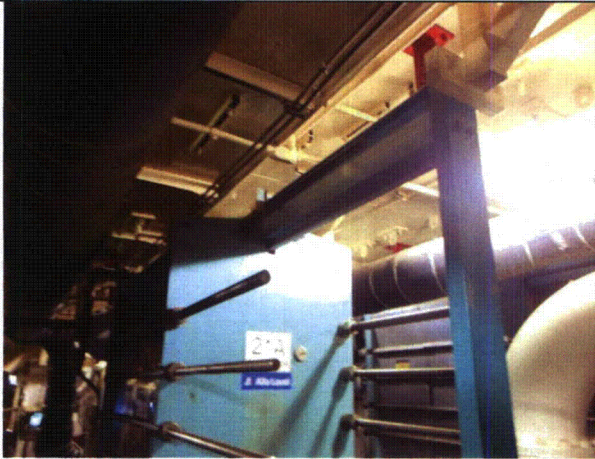
Status:  Y  N  U

**Seismic Walkdown Checklist (SWC)**

Equipment ID No.: 2HXSrw21A

Equipment Class: (21) Tanks and Heat Exchangers

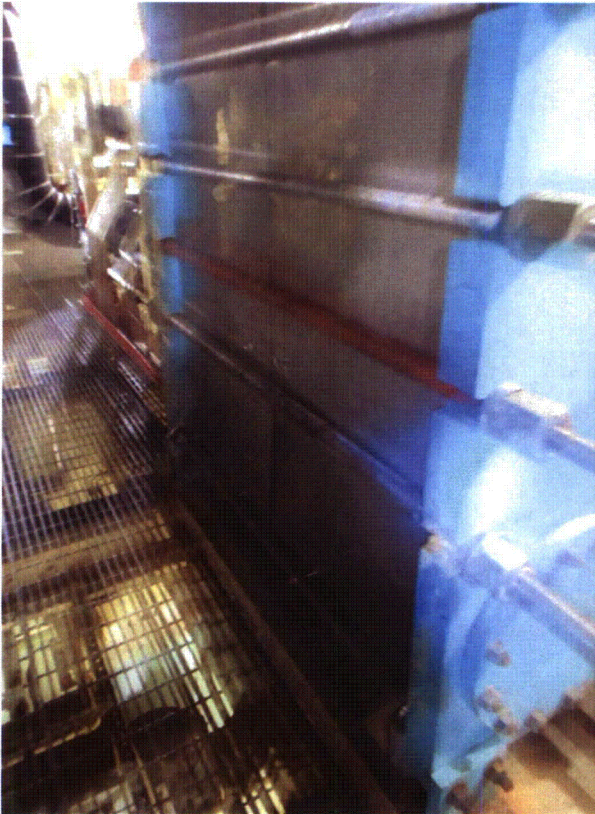
Equipment Description: 21A SERVICE WATER PHE



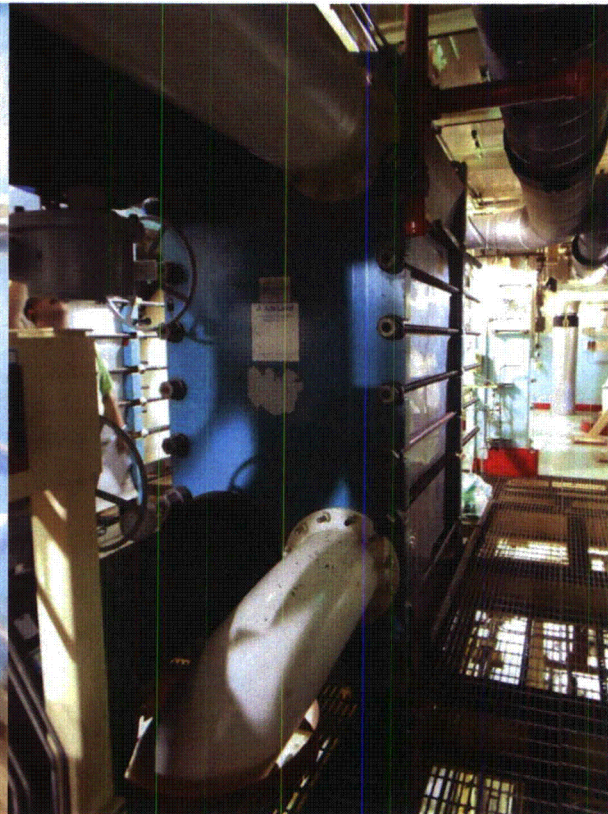
2HXSrw21A 8-6-12 290



2HXSrw21A 8-6-12 291



2HXSrw21A 8-6-12 292



2HXSrw21A 8-6-12 293



**ATTACHMENT 3**  
**WALKDOWN CHECKLISTS**

---

Status:  Y  N  U

**Seismic Walkdown Checklist (SWC)**

Equipment ID No.: 2HXSRW21A

Equipment Class: (21) Tanks and Heat Exchangers

Equipment Description: 21A SERVICE WATER PHE



2HXSRW21A 8-6-12 294

2HXSRW21A 8-6-12 295

**ATTACHMENT 3**  
**WALKDOWN CHECKLISTS**

---

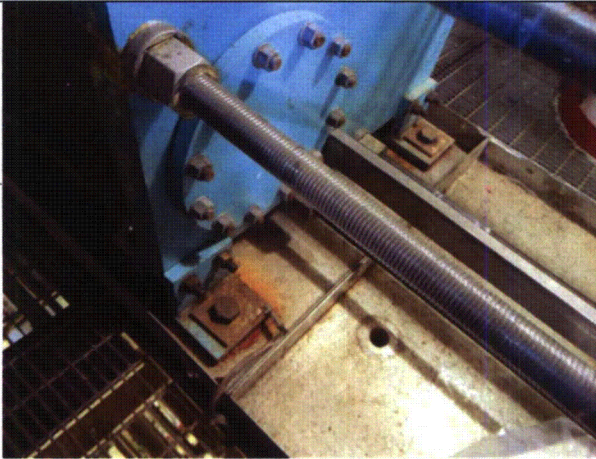
Status:  Y  N  U

**Seismic Walkdown Checklist (SWC)**

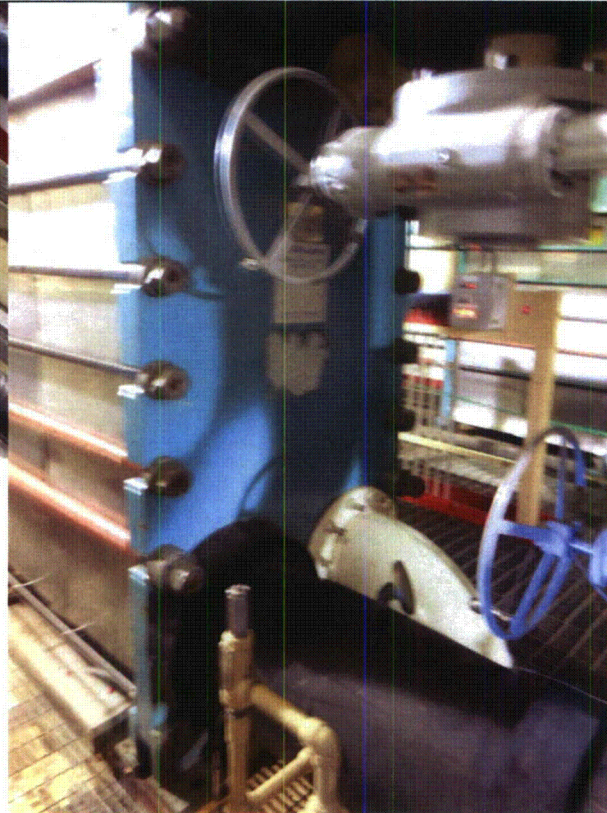
Equipment ID No.: 2HXSRW21A

Equipment Class: (21) Tanks and Heat Exchangers

Equipment Description: 21A SERVICE WATER PHE



2HXSRW21A 8-6-12 296



2HXSRW21A 8-6-12 297



# ATTACHMENT 3

## WALKDOWN CHECKLISTS

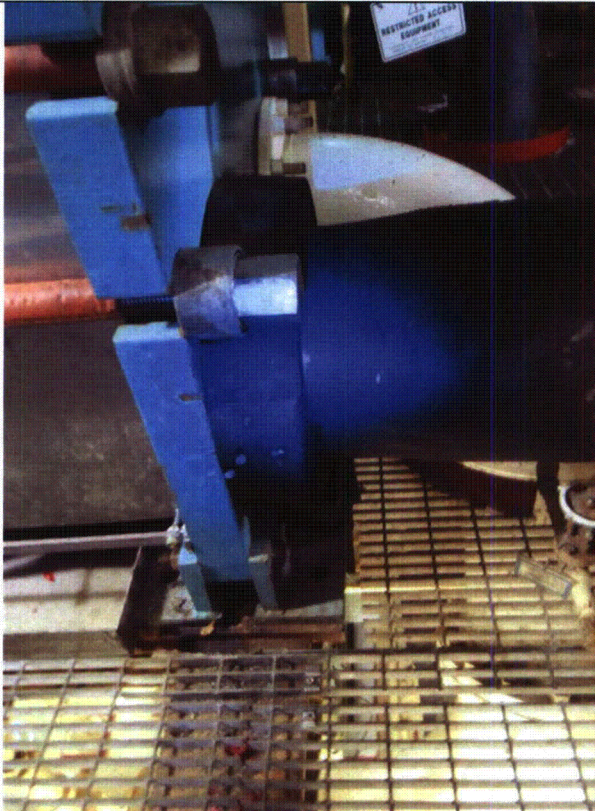
Status:  Y  N  U

### Seismic Walkdown Checklist (SWC)

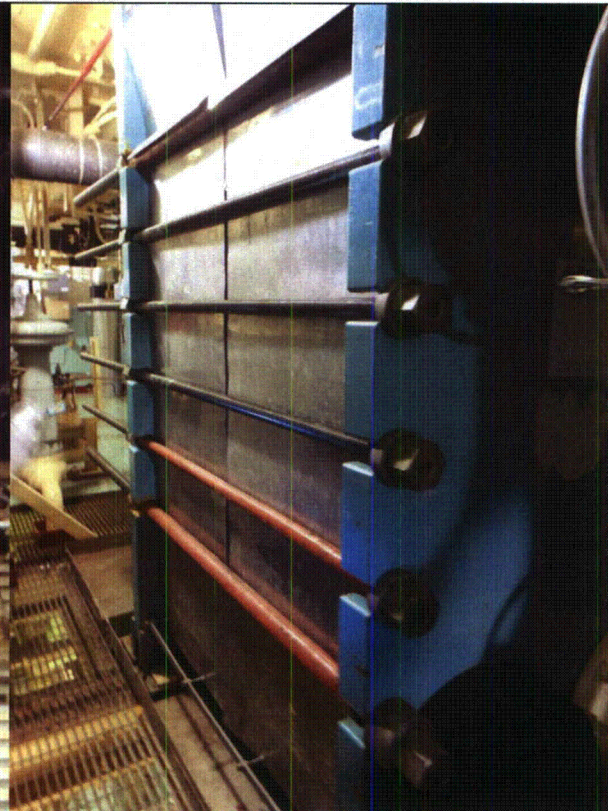
Equipment ID No.: 2HXSRW21A

Equipment Class: (21) Tanks and Heat Exchangers

Equipment Description: 21A SERVICE WATER PHE



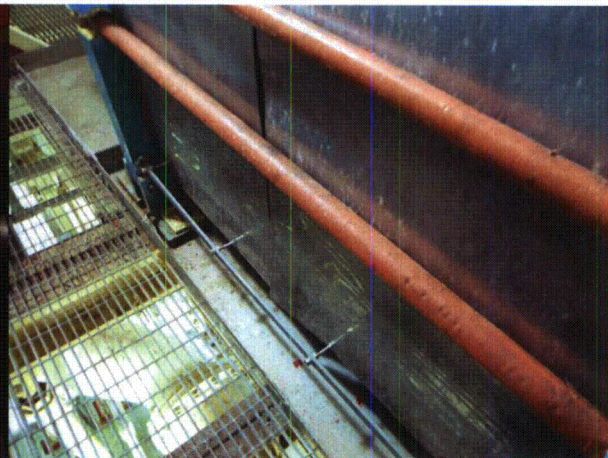
2HXSRW21A 8-6-12 298



2HXSRW21A 8-6-12 299



2HXSRW21A 8-6-12 300



2HXSRW21A 8-6-12 301



**ATTACHMENT 3**  
**WALKDOWN CHECKLISTS**

---

Status:  Y  N  U

**Seismic Walkdown Checklist (SWC)**

Equipment ID No.: 2HXSrw21A

Equipment Class: (21) Tanks and Heat Exchangers

Equipment Description: 21A SERVICE WATER PHE



2HXSrw21A 8-6-12 302



2HXSrw21A 8-6-12 303

## ATTACHMENT 3 WALKDOWN CHECKLISTS

Status:  Y  N  U

### Seismic Walkdown Checklist (SWC)

Equipment ID No.: 2I/P3939

Equipment Class: (0) Other

Equipment Description: STM GEN 21 ATM DMP VLV 2CV3939

Project: CCNPP 2 SWEL

Location (Bldg, Elev, Room/Area): AUX, 45.00 ft, CAL-AB-408

Manufacturer/Model:

### Instructions for Completing Checklist

This checklist may be used to document the results of the Seismic Walkdown of an item of equipment on the SWEL. The space below each of the following questions may be used to record the results of judgments and findings. Additional space is provided at the end of this checklist for documenting other comments.

### Anchorage

- |    |  |                |
|----|--|----------------|
| 1. | Is anchorage configuration verification required (i.e., is the item one of the 50% of SWEL items requiring such verification)?<br><i>This device is mounted next to PCV 3939A and on same unistrut by 2 - 7/16 Flat to Flat bolts.</i> | No             |
| 2. | Is the anchorage free of bent, broken, missing or loose hardware?  | Yes            |
| 3. | Is the anchorage free of corrosion that is more than mild surface oxidation?   | Yes            |
| 4. | Is the anchorage free of visible cracks in the concrete near the anchors?  | Yes            |
| 5. | Is the anchorage configuration consistent with plant documentation? (Note: This question only applies if the item is one of the 50% for which an anchorage configuration verification is required.)                                    | Not Applicable |
| 6. | Based on the above anchorage evaluations, is the anchorage free of potentially adverse seismic conditions?<br><i>Mounted next to PCV 3939A and on same unistrut by 2 - 7/16 Flat to Flat bolts</i>                                     | Yes            |

**ATTACHMENT 3  
WALKDOWN CHECKLISTS**

---

Status:  Y  N  U

**Seismic Walkdown Checklist (SWC)**

Equipment ID No.: 21/P3939

Equipment Class: (0) Other

Equipment Description: STM GEN 21 ATM DMP VLV 2CV3939

---

**Interaction Effects**

7. Are soft targets free from impact by nearby equipment or structures? Yes
8. Are overhead equipment, distribution systems, ceiling tiles and lighting, and masonry block walls not likely to collapse onto the equipment? Yes
9. Do attached lines have adequate flexibility to avoid damage? Yes
10. Based on the above seismic interaction evaluations, is equipment free of potentially adverse seismic interaction effects? Yes
- 

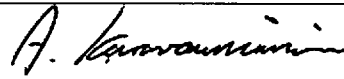
**Other Adverse Conditions**

11. Have you looked for and found no adverse seismic conditions that could adversely affect the safety functions of the equipment? Yes
- 

**Comments**

---

Evaluated by:



A. Karavoussianis

Date: 11/09/2012



C. Figliolini

11/09/2012

---

**Photos**

---



**ATTACHMENT 3**  
**WALKDOWN CHECKLISTS**

---

Status:  Y  N  U

**Seismic Walkdown Checklist (SWC)**

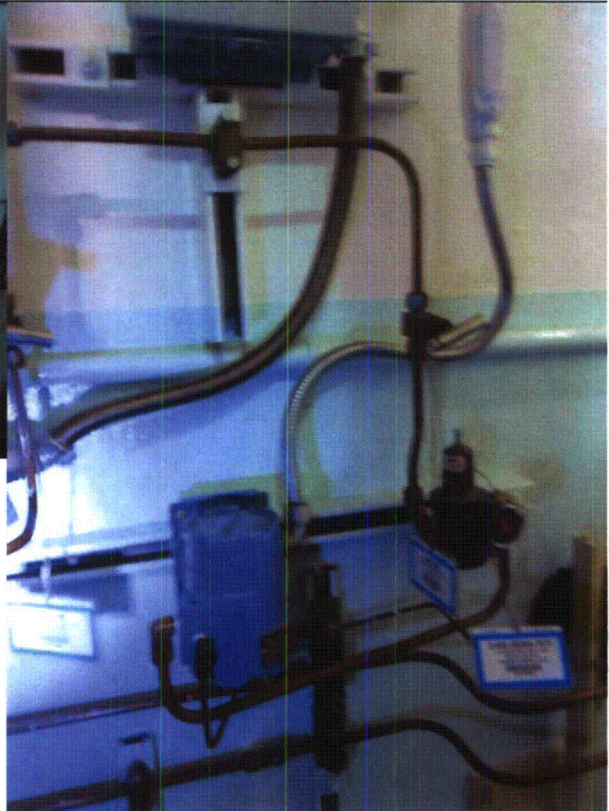
Equipment ID No.: 2I/P3939

Equipment Class: (0) Other

Equipment Description: STM GEN 21 ATM DMP VLV 2CV3939



2I#P3939 8-8-12 129



2I#P3939 8-8-12 130

**ATTACHMENT 3**  
**WALKDOWN CHECKLISTS**

---

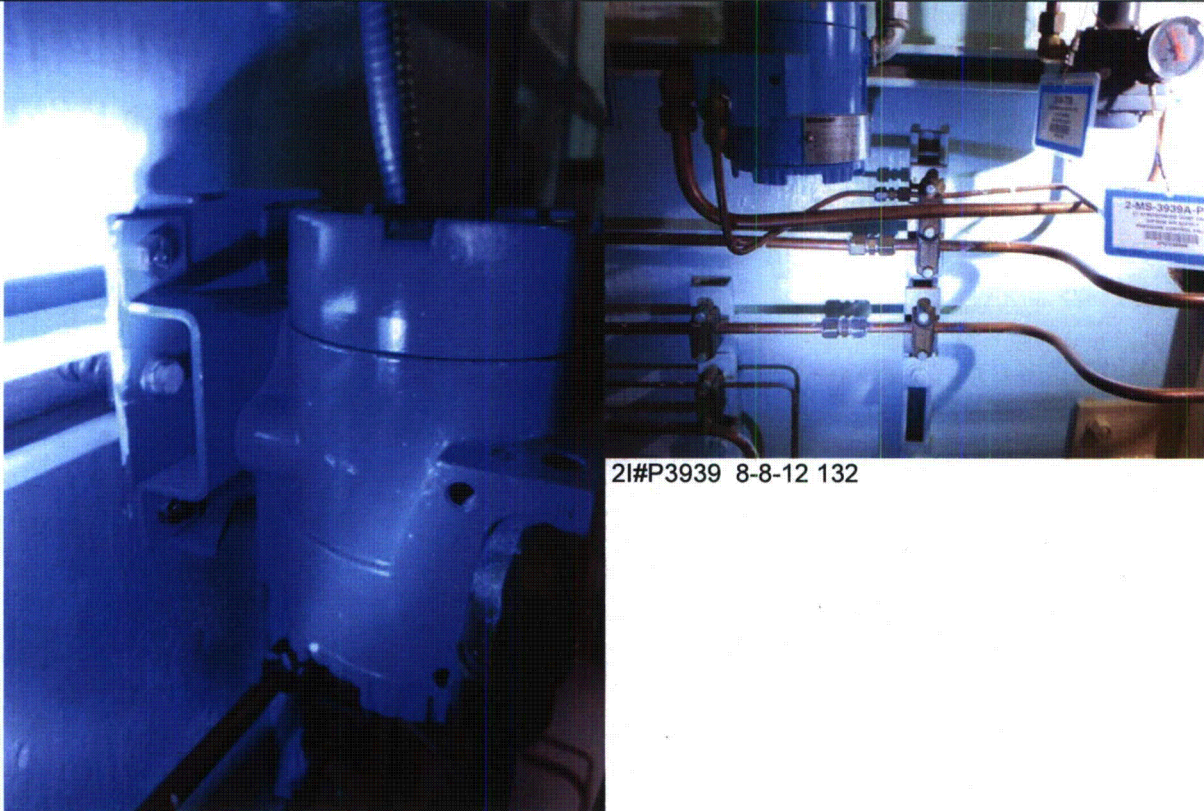
Status:  Y  N  U

**Seismic Walkdown Checklist (SWC)**

Equipment ID No.: 21/P3939

Equipment Class: (0) Other

Equipment Description: STM GEN 21 ATM DMP VLV 2CV3939



21#P3939 8-8-12 132

21#P3939 8-8-12 131



**ATTACHMENT 3**  
**WALKDOWN CHECKLISTS**

---

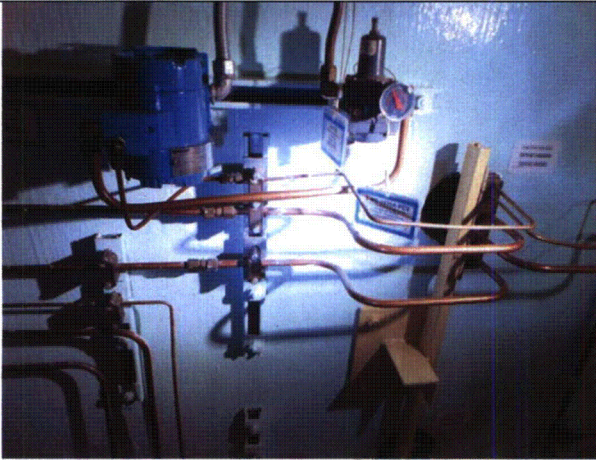
Status:  Y  N  U

**Seismic Walkdown Checklist (SWC)**

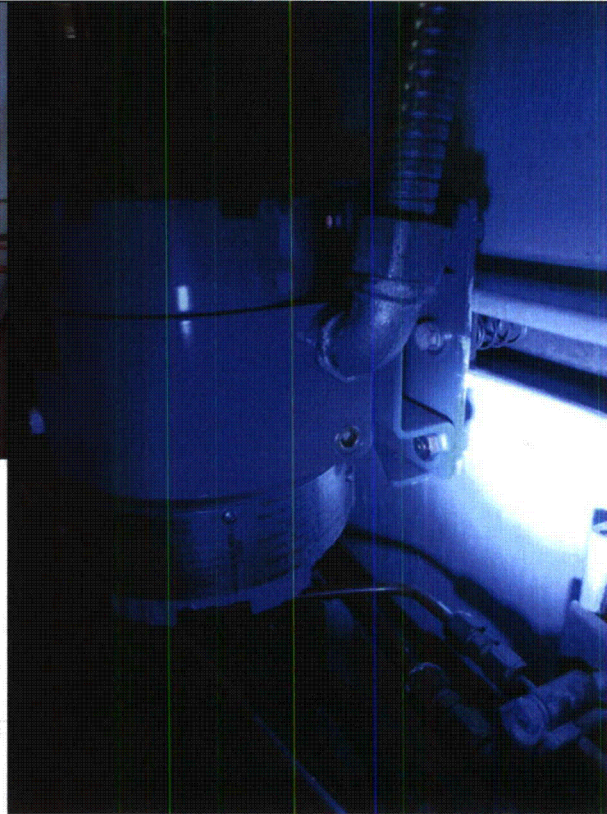
Equipment ID No.: 2I/P3939

Equipment Class: (0) Other

Equipment Description: STM GEN 21 ATM DMP VLV 2CV3939



2I#P3939 8-8-12 133



2I#P3939 8-8-12 134



**ATTACHMENT 3**  
**WALKDOWN CHECKLISTS**

---

Status:  Y  N  U

**Seismic Walkdown Checklist (SWC)**

Equipment ID No.: 2LIA5611

Equipment Class: (20) Instrumentation and Control Panels and Cabinets

Equipment Description: COND STORAGE TANK 12 LVL B IND ALARM

Project: CCNPP 2 SWEL

Location (Bldg, Elev, Room/Area): AUX, 45.00 ft, CAL-AB-405

Manufacturer/Model: \_\_\_\_\_

**Instructions for Completing Checklist**

This checklist may be used to document the results of the Seismic Walkdown of an item of equipment on the SWEL. The space below each of the following questions may be used to record the results of judgments and findings. Additional space is provided at the end of this checklist for documenting other comments.

**Anchorage**

- |   |                |
|---|----------------|
| 1. Is anchorage configuration verification required (i.e., is the item one of the 50% of SWEL items requiring such verification)?<br><i>SRT was not able to observe the anchorage inside the panel due to congestion of cables. However, the SRT observed the adjacent cabinet that is anchored using anchorage details per the control room drawing.</i> | No             |
| 2. Is the anchorage free of bent, broken, missing or loose hardware?  | Yes            |
| 3. Is the anchorage free of corrosion that is more than mild surface oxidation?   | Yes            |
| 4. Is the anchorage free of visible cracks in the concrete near the anchors?  | Yes            |
| 5. Is the anchorage configuration consistent with plant documentation? (Note: This question only applies if the item is one of the 50% for which an anchorage configuration verification is required.)  | Not Applicable |
| 6. Based on the above anchorage evaluations, is the anchorage free of potentially adverse seismic conditions?   | Yes            |

**ATTACHMENT 3**  
**WALKDOWN CHECKLISTS**

---

Status:  Y  N  U

**Seismic Walkdown Checklist (SWC)**

Equipment ID No.: 2LIA5611

Equipment Class: (20) Instrumentation and Control Panels and Cabinets

Equipment Description: COND STORAGE TANK 12 LVL B IND ALARM

---

**Interaction Effects**

7. Are soft targets free from impact by nearby equipment or structures? Yes
8. Are overhead equipment, distribution systems, ceiling tiles and lighting, and masonry block walls not likely to collapse onto the equipment? Yes  
*10/3/12 - The control room ceiling has been previously evaluated by CCNPP and was determined to not be a credible seismic concern.*
9. Do attached lines have adequate flexibility to avoid damage? Yes
10. Based on the above seismic interaction evaluations, is equipment free of potentially adverse seismic interaction effects? Yes
- 

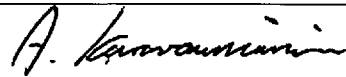
**Other Adverse Conditions**

11. Have you looked for and found no adverse seismic conditions that could adversely affect the safety functions of the equipment? Yes
- 

**Comments**

---

Evaluated by:



A. Karavoussianis

Date: 11/09/2012



C. Figliolini

11/09/2012

---

**Photos**

---

# ATTACHMENT 3

## WALKDOWN CHECKLISTS

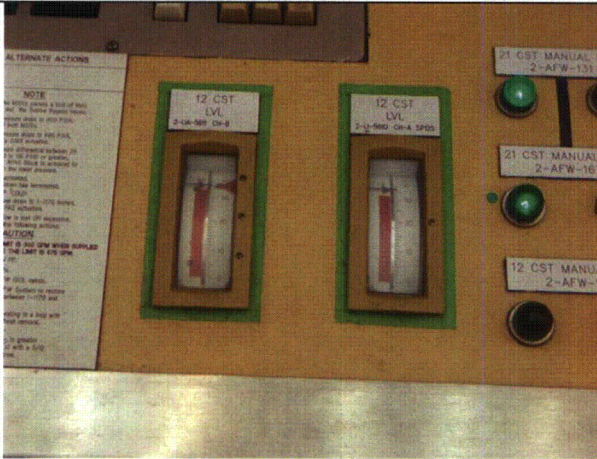
Status:  Y  N  U

### Seismic Walkdown Checklist (SWC)

Equipment ID No.: 2LIA5611

Equipment Class: (20) Instrumentation and Control Panels and Cabinets

Equipment Description: COND STORAGE TANK 12 LVL B IND ALARM



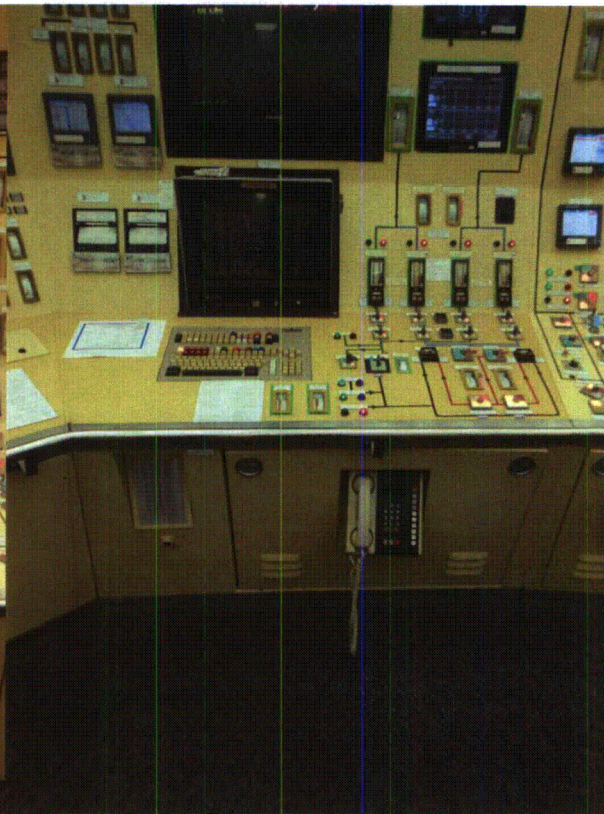
2LIA5611 8-14-12 154



2LIA5611 8-14-12 155



2LIA5611 8-14-12 156



2LIA5611 8-14-12 157



**ATTACHMENT 3**  
**WALKDOWN CHECKLISTS**

---

Status:  Y  N  U

**Seismic Walkdown Checklist (SWC)**

Equipment ID No.: 2LIA5611

Equipment Class: (20) Instrumentation and Control Panels and Cabinets

Equipment Description: COND STORAGE TANK 12 LVL B IND ALARM



2LIA5611 8-14-12 159



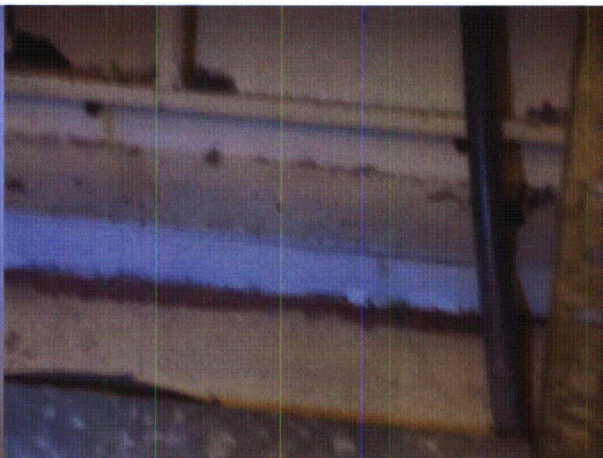
2LIA5611 8-14-12 160



2LIA5611 8-14-12 161



2LIA5611 8-14-12 162



**ATTACHMENT 3**  
**WALKDOWN CHECKLISTS**

---

Status:  Y  N  U

**Seismic Walkdown Checklist (SWC)**

Equipment ID No.: 2LIA5611

Equipment Class: (20) Instrumentation and Control Panels and Cabinets

Equipment Description: COND STORAGE TANK 12 LVL B IND ALARM

2LIA5611 8-14-12 163

2LIA5611 8-14-12 164

---

Status:  Y  N  U

**Seismic Walkdown Checklist (SWC)**

Equipment ID No.: 2LT1565

Equipment Class: (20) Instrumentation and Control Panels and Cabinets

Equipment Description: SERV WTR HEAD TNK 22 LEVEL

Project: CCNPP 2 SWEL

Location (Bldg, Elev, Room/Area): AUX, 70.00 ft, CAL-AB-526

Manufacturer/Model: \_\_\_\_\_

**Instructions for Completing Checklist**

This checklist may be used to document the results of the Seismic Walkdown of an item of equipment on the SWEL. The space below each of the following questions may be used to record the results of judgments and findings. Additional space is provided at the end of this checklist for documenting other comments.

---

**Anchorage**

1. Is anchorage configuration verification required (i.e., is the item one of the 50% of SWEL items requiring such verification)? Yes
  
  2. Is the anchorage free of bent, broken, missing or loose hardware? Yes
  
  3. Is the anchorage free of corrosion that is more than mild surface oxidation? Yes
  
  4. Is the anchorage free of visible cracks in the concrete near the anchors? Yes
-

**ATTACHMENT 3**  
**WALKDOWN CHECKLISTS**

---

Status:  Y  N  U

**Seismic Walkdown Checklist (SWC)**

Equipment ID No.: 2LT1565

Equipment Class: (20) Instrumentation and Control Panels and Cabinets

Equipment Description: SERV WTR HEAD TNK 22 LEVEL

---

5. Is the anchorage configuration consistent with plant documentation? (Note: This question only applies if the item is one of the 50% for which an anchorage configuration verification is required.) Yes  
*Device is mounted on typical detail with a base plate of 8x10 instead of 6x8 and the anchor bolts are 1/2" instead of 3/8".  
Anchorage is consistent with drawing 66426 Sheet 003, which calls for a support detail similar to J103 (drawing 91004). The walkdown as-built this judged to be similar to J103.*
6. Based on the above anchorage evaluations, is the anchorage free of potentially adverse seismic conditions? Yes
- 

**Interaction Effects**

7. Are soft targets free from impact by nearby equipment or structures? Yes
8. Are overhead equipment, distribution systems, ceiling tiles and lighting, and masonry block walls not likely to collapse onto the equipment? Yes
9. Do attached lines have adequate flexibility to avoid damage? Yes
10. Based on the above seismic interaction evaluations, is equipment free of potentially adverse seismic interaction effects? Yes
- 

**Other Adverse Conditions**

11. Have you looked for and found no adverse seismic conditions that could adversely affect the safety functions of the equipment? Yes
- 

**Comments**



**ATTACHMENT 3**  
**WALKDOWN CHECKLISTS**

---

Status:  Y  N  U

**Seismic Walkdown Checklist (SWC)**

Equipment ID No.: 2LT1565

Equipment Class: (20) Instrumentation and Control Panels and Cabinets

Equipment Description: SERV WTR HEAD TNK 22 LEVEL

---

Evaluated by: *A. Karavoussianis* A. Karavoussianis Date: 11/09/2012

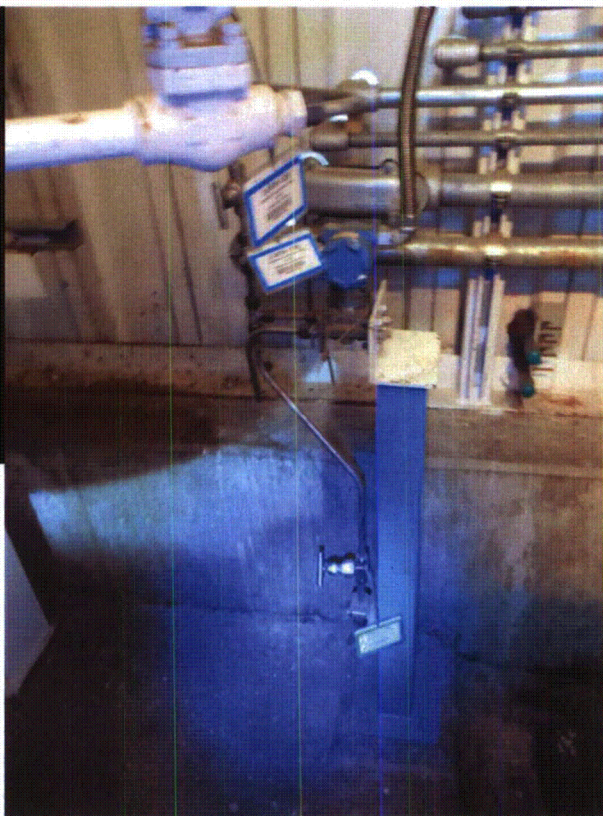
*C. Figliolini* C. Figliolini 11/09/2012

---

**Photos**



2LT1565 8-9-12 166



2LT1565 8-9-12 169

---

# ATTACHMENT 3

## WALKDOWN CHECKLISTS

---

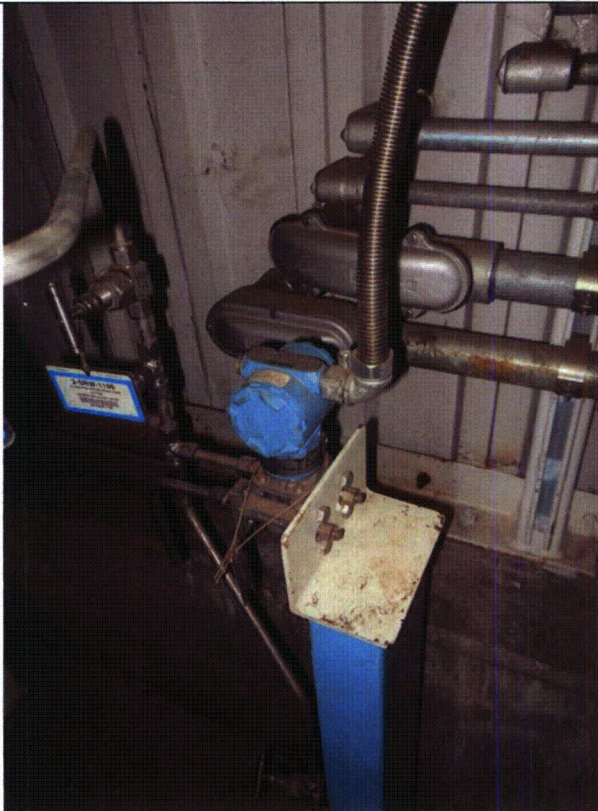
Status:  Y  N  U

### Seismic Walkdown Checklist (SWC)

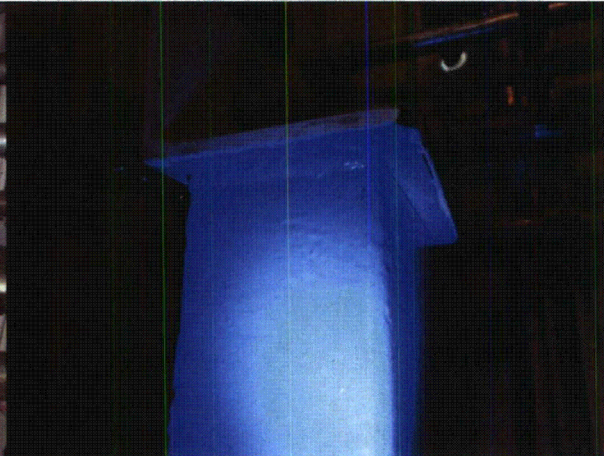
Equipment ID No.: 2LT1565

Equipment Class: (20) Instrumentation and Control Panels and Cabinets

Equipment Description: SERV WTR HEAD TNK 22 LEVEL



2LT1565 8-9-12 171



2LT1565 8-9-12 172

**ATTACHMENT 3**  
**WALKDOWN CHECKLISTS**

---

Status:  Y  N  U

**Seismic Walkdown Checklist (SWC)**

Equipment ID No.: 2LT4142

Equipment Class: (20) Instrumentation and Control Panels and Cabinets

Equipment Description: REFUEL WTR TNK 21 LEVEL

Project: CCNPP 2 SWEL

Location (Bldg, Elev, Room/Area): AUX, 45.00 ft, CAL-AB-440

Manufacturer/Model: \_\_\_\_\_

**Instructions for Completing Checklist**

This checklist may be used to document the results of the Seismic Walkdown of an item of equipment on the SWEL. The space below each of the following questions may be used to record the results of judgments and findings. Additional space is provided at the end of this checklist for documenting other comments.

**Anchorage**

1. Is anchorage configuration verification required (i.e., is the item one of the 50% of SWEL items requiring such verification)? Yes
  
2. Is the anchorage free of bent, broken, missing or loose hardware? Yes
  
3. Is the anchorage free of corrosion that is more than mild surface oxidation? Yes
  
4. Is the anchorage free of visible cracks in the concrete near the anchors? Yes
  
5. Is the anchorage configuration consistent with plant documentation? (Note: This question only applies if the item is one of the 50% for which an anchorage configuration verification is required.) Yes  
*Anchorage is consistent with drawings 66862SH0003 and FSK-M-0026.*
  
6. Based on the above anchorage evaluations, is the anchorage free of potentially adverse seismic conditions? Yes



**ATTACHMENT 3**  
**WALKDOWN CHECKLISTS**

---

Status:  Y  N  U

**Seismic Walkdown Checklist (SWC)**

Equipment ID No.: 2LT4142

Equipment Class: (20) Instrumentation and Control Panels and Cabinets

Equipment Description: REFUEL WTR TNK 21 LEVEL

---

**Interaction Effects**

7. Are soft targets free from impact by nearby equipment or structures? Yes
8. Are overhead equipment, distribution systems, ceiling tiles and lighting, and masonry block walls not likely to collapse onto the equipment? Yes  
*The overhead threaded fire piping is rod hung and rods are clamped to roof steel and is judged to be adequately supported and not a concern for spray or flooding.*
9. Do attached lines have adequate flexibility to avoid damage? Yes
10. Based on the above seismic interaction evaluations, is equipment free of potentially adverse seismic interaction effects? Yes
- 

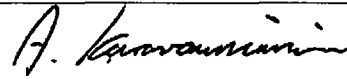
**Other Adverse Conditions**

11. Have you looked for and found no adverse seismic conditions that could adversely affect the safety functions of the equipment? Yes
- 

**Comments**

---

Evaluated by:



A. Karavoussianis

Date: 11/09/2012



C. Figliolini

11/09/2012

---

**Photos**

---

# ATTACHMENT 3

## WALKDOWN CHECKLISTS

---

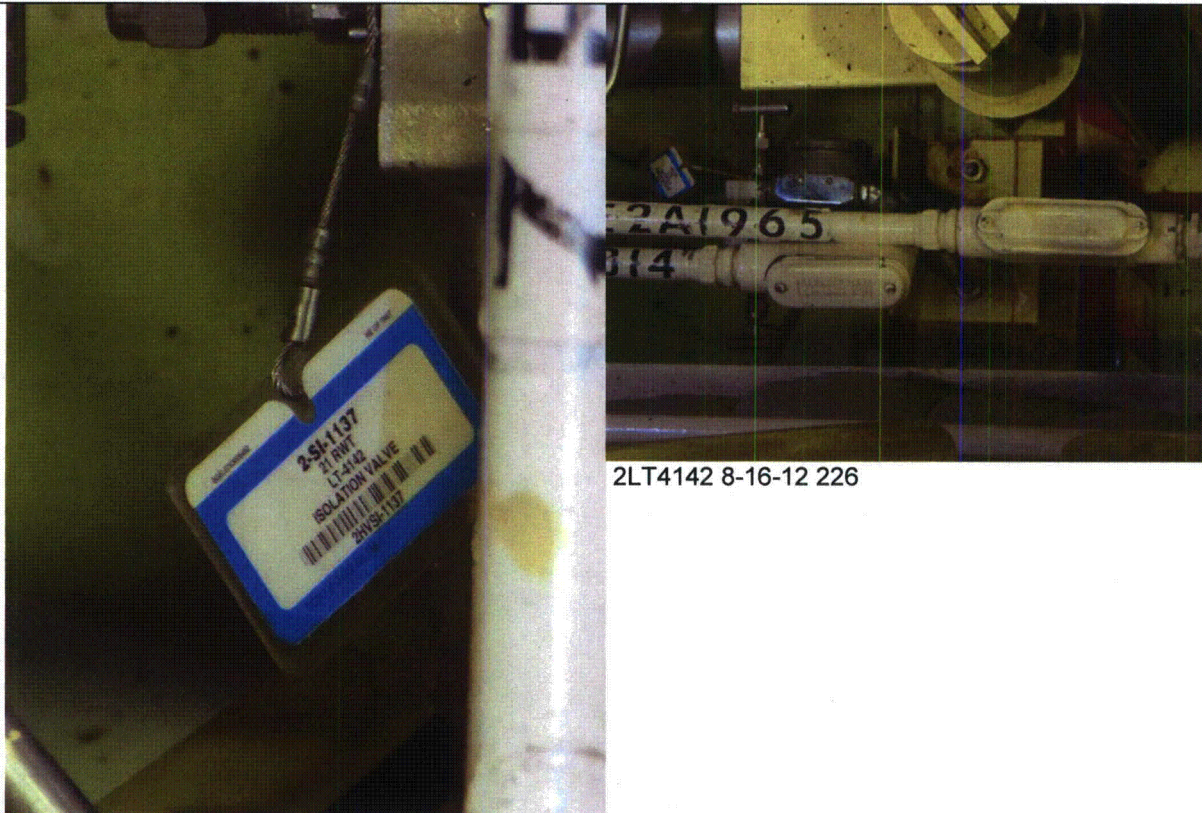
Status:  Y  N  U

### Seismic Walkdown Checklist (SWC)

Equipment ID No.: 2LT4142

Equipment Class: (20) Instrumentation and Control Panels and Cabinets

Equipment Description: REFUEL WTR TNK 21 LEVEL



2LT4142 8-16-12 226

2LT4142 8-16-12 225

**ATTACHMENT 3**  
**WALKDOWN CHECKLISTS**

---

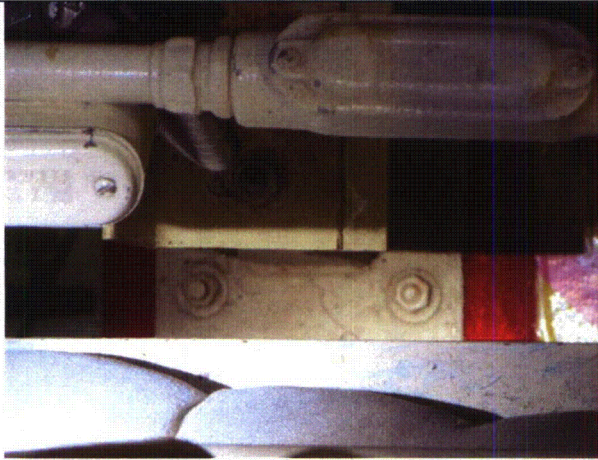
Status:  Y  N  U

**Seismic Walkdown Checklist (SWC)**

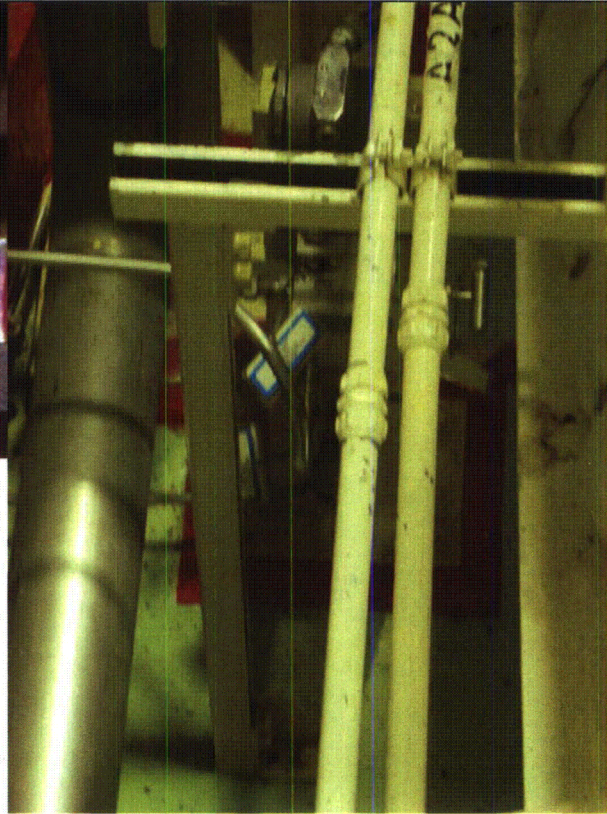
Equipment ID No.: 2LT4142

Equipment Class: (20) Instrumentation and Control Panels and Cabinets

Equipment Description: REFUEL WTR TNK 21 LEVEL



2LT4142 8-16-12 227



2LT4142 8-16-12 228



**ATTACHMENT 3**  
**WALKDOWN CHECKLISTS**

---

Status:  Y  N  U

**Seismic Walkdown Checklist (SWC)**

Equipment ID No.: 2M2AG03

Equipment Class: (12) Air Compressors

Equipment Description: 2A DG AIR COMPRESSOR

Project: CCNPP 2 SWEL

Location (Bldg, Elev, Room/Area): AUX, 45.00 ft, CAL-AB-422

Manufacturer/Model: \_\_\_\_\_

**Instructions for Completing Checklist**

This checklist may be used to document the results of the Seismic Walkdown of an item of equipment on the SWEL. The space below each of the following questions may be used to record the results of judgments and findings. Additional space is provided at the end of this checklist for documenting other comments.

**Anchorage**

1. Is anchorage configuration verification required (i.e., is the item one of the 50% of SWEL items requiring such verification)? Yes
  
2. Is the anchorage free of bent, broken, missing or loose hardware? Yes
  
3. Is the anchorage free of corrosion that is more than mild surface oxidation? Yes
  
4. Is the anchorage free of visible cracks in the concrete near the anchors? Yes
  
5. Is the anchorage configuration consistent with plant documentation? (Note: This question only applies if the item is one of the 50% for which an anchorage configuration verification is required.) Yes  
*Anchorage is consistent with drawings 12310-0038 and FSK-C-370 Sheet 1.*
  
6. Based on the above anchorage evaluations, is the anchorage free of potentially adverse seismic conditions? Yes

**ATTACHMENT 3**  
**WALKDOWN CHECKLISTS**

---

Status:  Y  N  U

**Seismic Walkdown Checklist (SWC)**

Equipment ID No.: 2M2AG03

Equipment Class: (12) Air Compressors

Equipment Description: 2A DG AIR COMPRESSOR

---

**Interaction Effects**

7. Are soft targets free from impact by nearby equipment or structures? Yes
8. Are overhead equipment, distribution systems, ceiling tiles and lighting, and masonry block walls not likely to collapse onto the equipment? Yes  
*Compressor filter is directly under overhead light.*  
*10/3/12 - Overhead lights were deemed not a credible seismic concern due to their lightweight and typical construction practices. Also, they have been previously evaluated by CCNPP and found seismically acceptable.*
9. Do attached lines have adequate flexibility to avoid damage? Yes
10. Based on the above seismic interaction evaluations, is equipment free of potentially adverse seismic interaction effects? Yes
- 

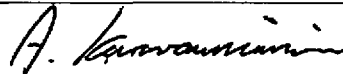
**Other Adverse Conditions**

11. Have you looked for and found no adverse seismic conditions that could adversely affect the safety functions of the equipment? Yes
- 

**Comments**

---

Evaluated by:



A. Karavoussianis

Date: 11/09/2012



C. Figliolini

11/09/2012

---

**Photos**

---

**ATTACHMENT 3**  
**WALKDOWN CHECKLISTS**

---

Status:  Y  N  U

**Seismic Walkdown Checklist (SWC)**

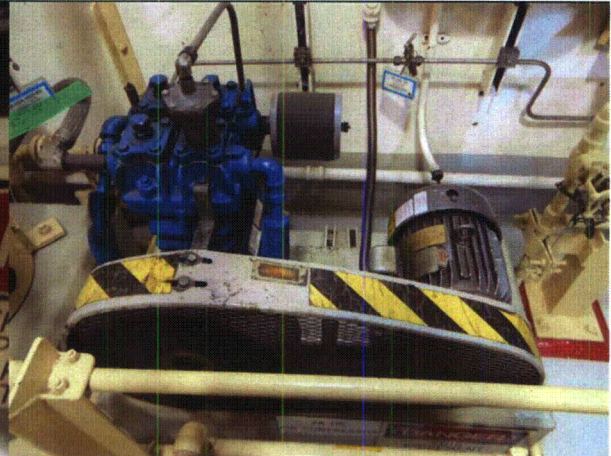
Equipment ID No.: 2M2AG03

Equipment Class: (12) Air Compressors

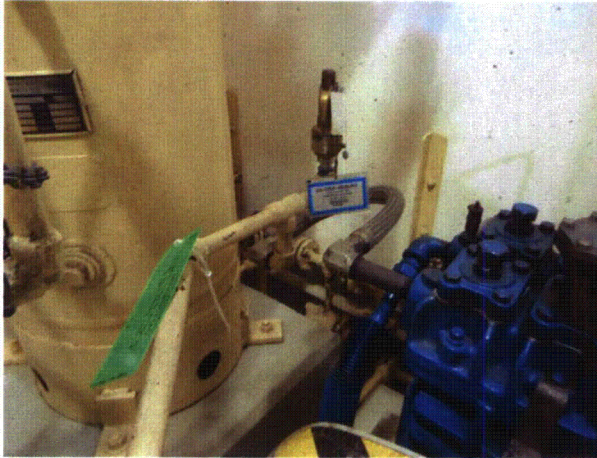
Equipment Description: 2A DG AIR COMPRESSOR



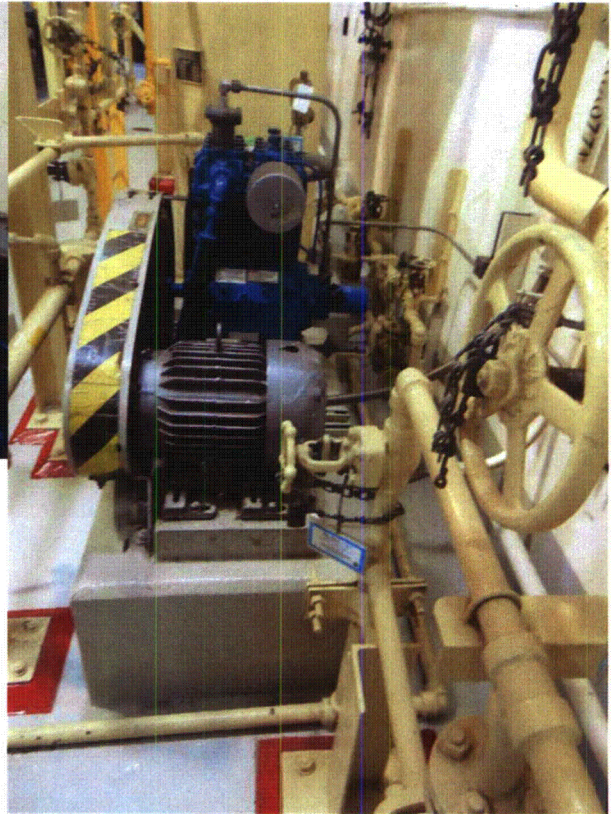
2M2AG03 8-13-12 177



2M2AG03 8-13-12 178



2M2AG03 8-13-12 179



2M2AG03 8-13-12 180



**ATTACHMENT 3**  
**WALKDOWN CHECKLISTS**

---

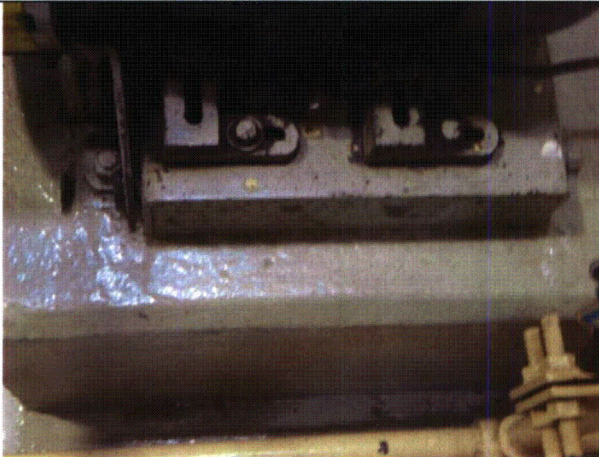
Status:  Y  N  U

**Seismic Walkdown Checklist (SWC)**

Equipment ID No.: 2M2AG03

Equipment Class: (12) Air Compressors

Equipment Description: 2A DG AIR COMPRESSOR



2M2AG03 8-13-12 181



2M2AG03 8-13-12 182



2M2AG03 8-13-12 183

**ATTACHMENT 3**  
**WALKDOWN CHECKLISTS**

---

Status:  Y  N  U

**Seismic Walkdown Checklist (SWC)**

Equipment ID No.: 2MA412

Equipment Class: (6) Vertical Pumps

Equipment Description: 23 SW PUMP MTR

Project: CCNPP 2 SWEL

Location (Bldg, Elev, Room/Area): Intake, -7.00 ft, CAL-ISPR-INT2

Manufacturer/Model: \_\_\_\_\_

**Instructions for Completing Checklist**

This checklist may be used to document the results of the Seismic Walkdown of an item of equipment on the SWEL. The space below each of the following questions may be used to record the results of judgments and findings. Additional space is provided at the end of this checklist for documenting other comments.

**Anchorage**

1. Is anchorage configuration verification required (i.e., is the item one of the 50% of SWEL items requiring such verification)? Yes
  
2. Is the anchorage free of bent, broken, missing or loose hardware? Yes
  
3. Is the anchorage free of corrosion that is more than mild surface oxidation? Yes
  
4. Is the anchorage free of visible cracks in the concrete near the anchors? Not Applicable  
*Motor is bolted to steel.*
  
5. Is the anchorage configuration consistent with plant documentation? (Note: This question only applies if the item is one of the 50% for which an anchorage configuration verification is required.) Yes  
*Bolted by 8 x 1-1/2" F-F bolts heads. Anchorage is consistent with drawing 12315-07 and calculation CA01028.*
  
6. Based on the above anchorage evaluations, is the anchorage free of potentially adverse seismic conditions? Yes

**ATTACHMENT 3**  
**WALKDOWN CHECKLISTS**

---

Status:  Y  N  U

**Seismic Walkdown Checklist (SWC)**

Equipment ID No.: 2MA412

Equipment Class: (6) Vertical Pumps

Equipment Description: 23 SW PUMP MTR

---

**Interaction Effects**

7. Are soft targets free from impact by nearby equipment or structures? Yes
8. Are overhead equipment, distribution systems, ceiling tiles and lighting, and masonry block walls not likely to collapse onto the equipment? Yes
9. Do attached lines have adequate flexibility to avoid damage? Yes
10. Based on the above seismic interaction evaluations, is equipment free of potentially adverse seismic interaction effects? Yes
- 

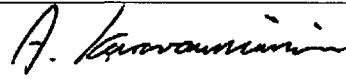
**Other Adverse Conditions**

11. Have you looked for and found no adverse seismic conditions that could adversely affect the safety functions of the equipment? Yes
- 

**Comments**

---

Evaluated by:



A. Karavoussianis

Date: 11/09/2012



C. Figliolini

11/09/2012

---

**Photos**

---



**ATTACHMENT 3**  
**WALKDOWN CHECKLISTS**

---

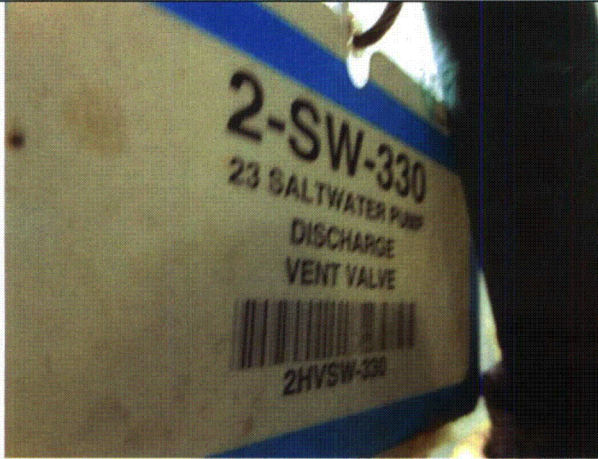
Status:  Y  N  U

**Seismic Walkdown Checklist (SWC)**

Equipment ID No.: 2MA412

Equipment Class: (6) Vertical Pumps

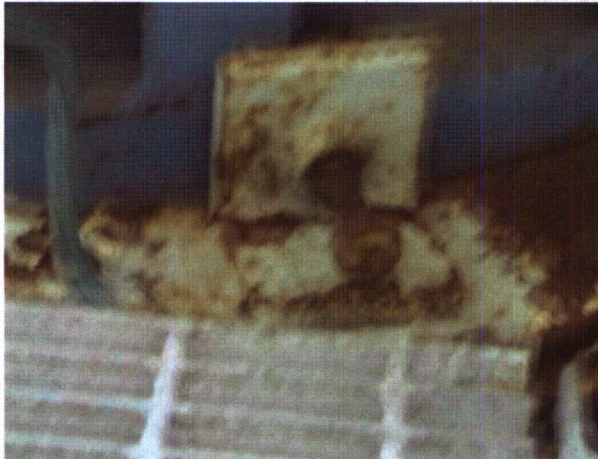
Equipment Description: 23 SW PUMP MTR



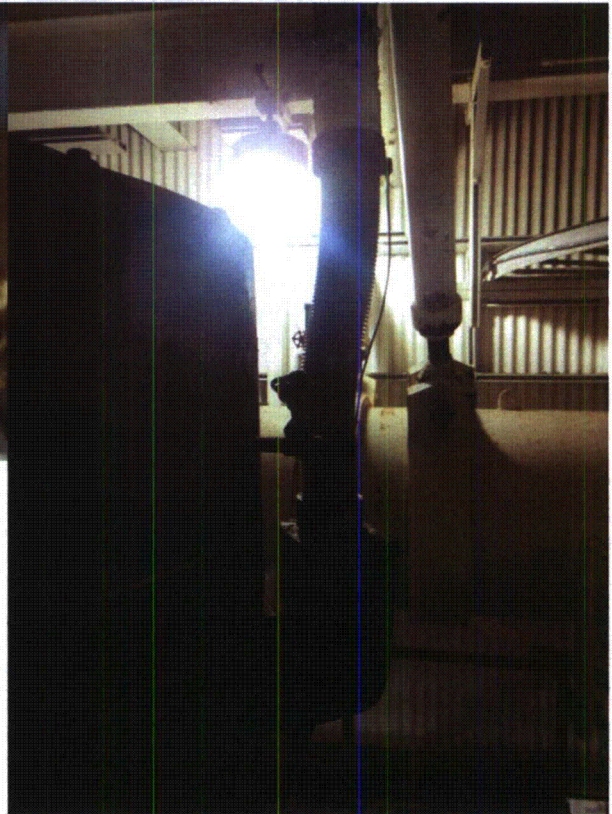
2MA412 8-16-12 146



2MA412 8-16-12 149



2MA412 8-16-12 150



2MA412 8-16-12 151



**ATTACHMENT 3**  
**WALKDOWN CHECKLISTS**

---

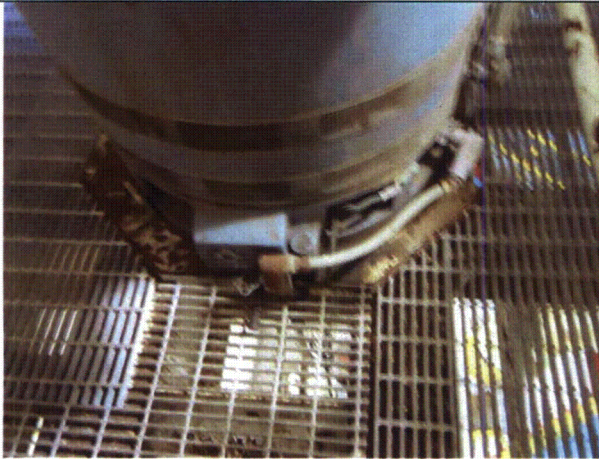
Status:  Y  N  U

**Seismic Walkdown Checklist (SWC)**

Equipment ID No.: 2MA412

Equipment Class: (6) Vertical Pumps

Equipment Description: 23 SW PUMP MTR



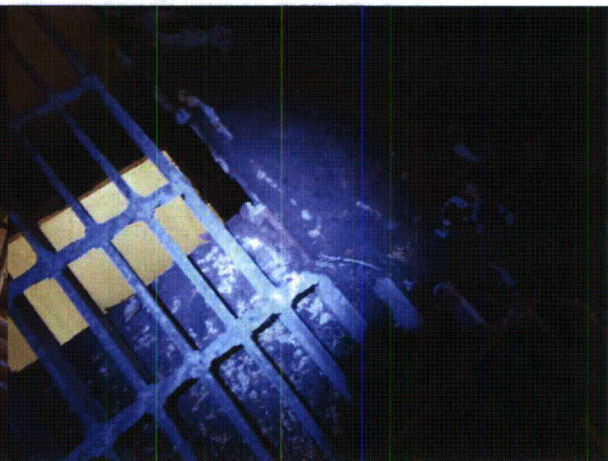
2MA412 8-16-12 152



2MA412 8-16-12 153



2MA412 8-16-12 154



2MA412 8-16-12 155

**ATTACHMENT 3**  
**WALKDOWN CHECKLISTS**

---

Status: Y  N  U

**Seismic Walkdown Checklist (SWC)**

Equipment ID No.: 2MCC214R

Equipment Class: (1) Motor Control Centers

Equipment Description: 480V MCC214R

Project: CCNPP 2 SWEL

Location (Bldg, Elev, Room/Area): AUX, 70.00 ft, CAL-AB-532

Manufacturer/Model: \_\_\_\_\_

**Instructions for Completing Checklist**

This checklist may be used to document the results of the Seismic Walkdown of an item of equipment on the SWEL. The space below each of the following questions may be used to record the results of judgments and findings. Additional space is provided at the end of this checklist for documenting other comments.

**Anchorage**

1. Is anchorage configuration verification required (i.e., is the item one of the 50% of SWEL items requiring such verification)? Yes
  
2. Is the anchorage free of bent, broken, missing or loose hardware? Yes
  
3. Is the anchorage free of corrosion that is more than mild surface oxidation? Yes
  
4. Is the anchorage free of visible cracks in the concrete near the anchors? Yes
  
5. Is the anchorage configuration consistent with plant documentation? (Note: This question only applies if the item is one of the 50% for which an anchorage configuration verification is required.) Yes  

*MCC is welded to embedded steel by 3/16" fillet welds approximately 3" long at 20" centers. The embedded steel is a C6 channel in a concrete pad that is 7" high x 24-1/2" wide.*

*According to CCNPP personnel, the MCC is also unknown as MCC-2B004 and the walkdown noted panel 2P14 within the MCC. Anchorage is consistent with calculation CA02066 Section 21.*
  
6. Based on the above anchorage evaluations, is the anchorage free of Yes



**ATTACHMENT 3**  
**WALKDOWN CHECKLISTS**

---

Status: Y  N  U

**Seismic Walkdown Checklist (SWC)**

Equipment ID No.: 2MCC214R

Equipment Class: (1) Motor Control Centers

Equipment Description: 480V MCC214R

potentially adverse seismic conditions?

---

**Interaction Effects**

7. Are soft targets free from impact by nearby equipment or structures? Yes

*There is a ladder behind the MCC that is tied at the top and properly restrained, therefore judged not to be a seismic concern.*

8. Are overhead equipment, distribution systems, ceiling tiles and lighting, and masonry block walls not likely to collapse onto the equipment? Yes

*There are heaters that are 6' and 8' from MCC. Their valves have sufficient gap approximately 2" from any impact hazard and the heaters have adequate vertical support, therefore judged not to be a seismic concern.*

9. Do attached lines have adequate flexibility to avoid damage? Yes

10. Based on the above seismic interaction evaluations, is equipment free of potentially adverse seismic interaction effects? Yes

---

**Other Adverse Conditions**

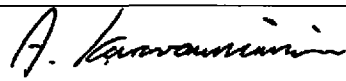
11. Have you looked for and found no adverse seismic conditions that could adversely affect the safety functions of the equipment? No

*Cabinet is inaccessible for internal inspection.*

---

**Comments**

Evaluated by:



A. Karavoussianis

Date: 11/09/2012



C. Figliolini

11/09/2012

**ATTACHMENT 3**  
**WALKDOWN CHECKLISTS**

---

Status: Y  N  U

**Seismic Walkdown Checklist (SWC)**

Equipment ID No.: 2MCC214R

Equipment Class: (1) Motor Control Centers

Equipment Description: 480V MCC214R

---

**Photos**



2MCC214R 8-9-12 095

2MCC214R 8-9-12 096

---



# ATTACHMENT 3

## WALKDOWN CHECKLISTS

Status: Y  N  U

### Seismic Walkdown Checklist (SWC)

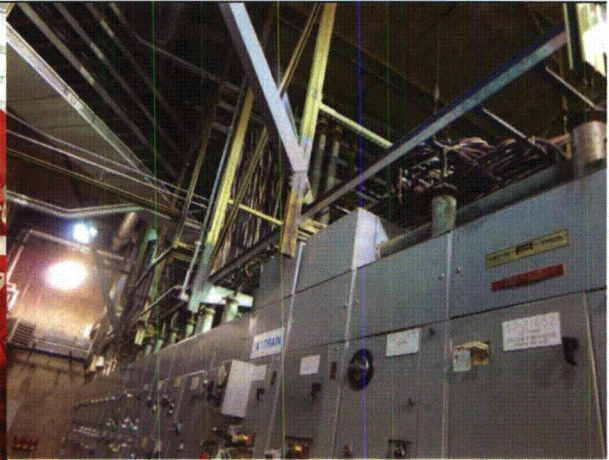
Equipment ID No.: 2MCC214R

Equipment Class: (1) Motor Control Centers

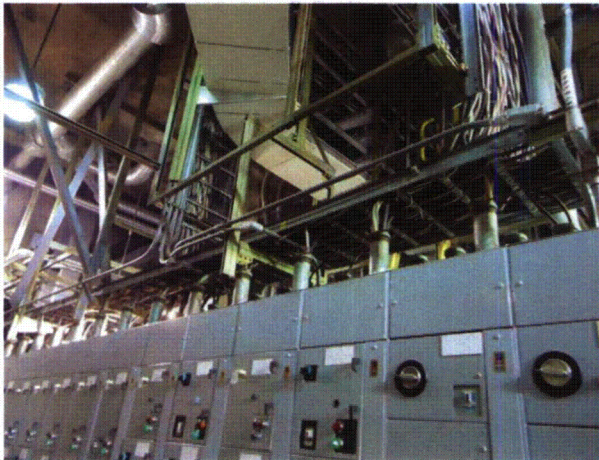
Equipment Description: 480V MCC214R



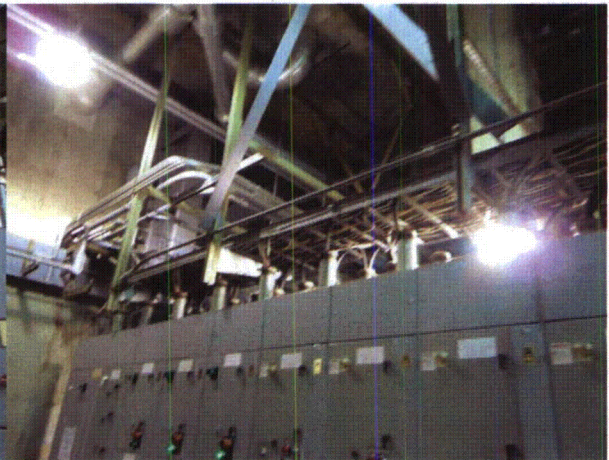
2MCC214R 8-9-12 097



2MCC214R 8-9-12 098



2MCC214R 8-9-12 099



2MCC214R 8-9-12 100



**ATTACHMENT 3**  
**WALKDOWN CHECKLISTS**

---

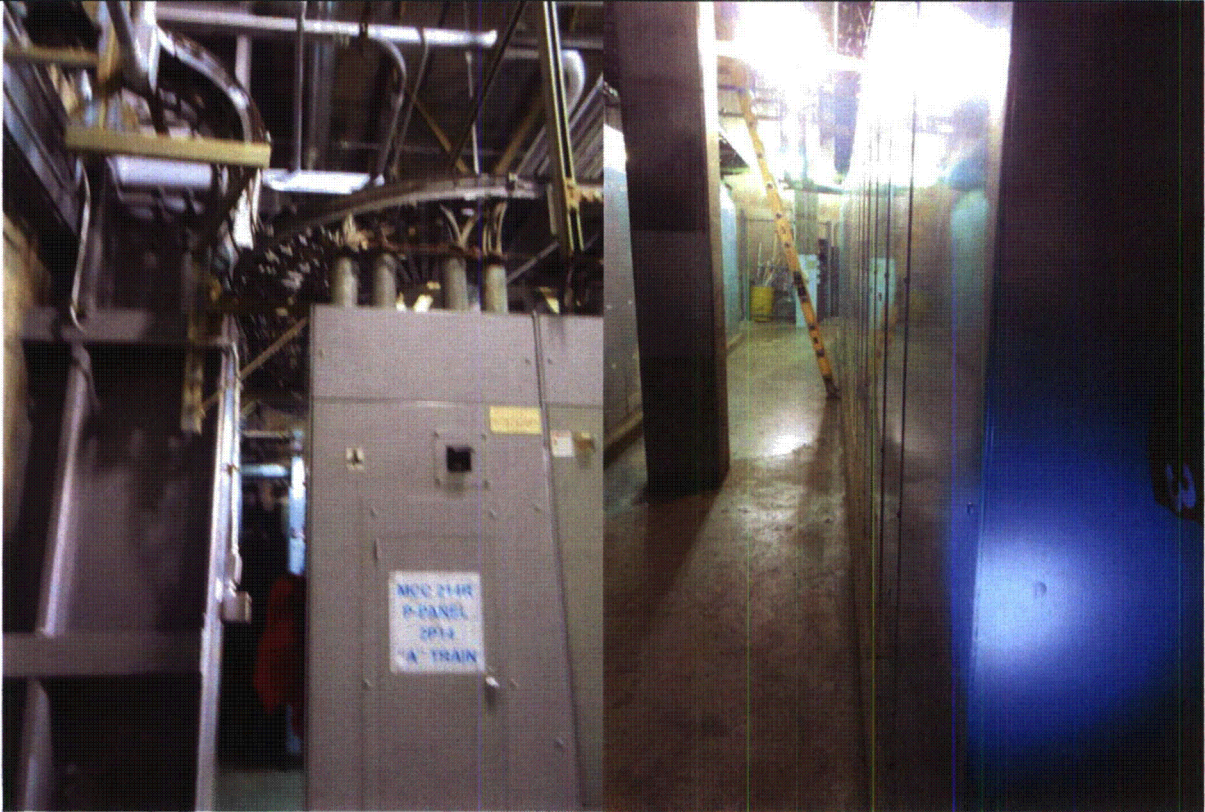
Status: Y  N  U

**Seismic Walkdown Checklist (SWC)**

Equipment ID No.: 2MCC214R

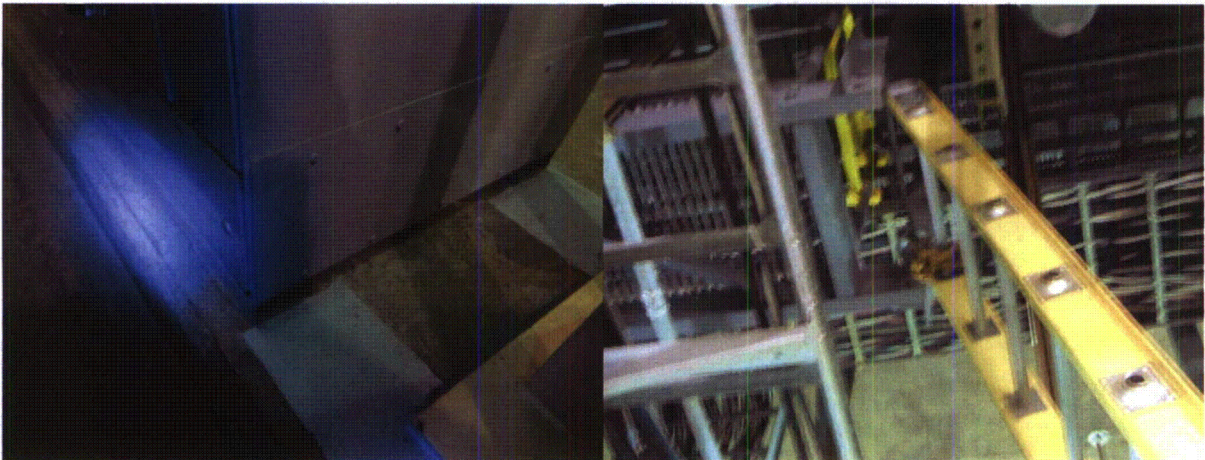
Equipment Class: (1) Motor Control Centers

Equipment Description: 480V MCC214R



2MCC214R 8-9-12 101

2MCC214R 8-9-12 102



2MCC214R 8-9-12 103

2MCC214R 8-9-12 104



**ATTACHMENT 3**  
**WALKDOWN CHECKLISTS**

---

Status: Y  N  U

**Seismic Walkdown Checklist (SWC)**

Equipment ID No.: 2MCC214R

Equipment Class: (1) Motor Control Centers

Equipment Description: 480V MCC214R



2MCC214R 8-9-12 106



2MCC214R 8-9-12 108

**ATTACHMENT 3**  
**WALKDOWN CHECKLISTS**

---

Status:  Y  N  U

**Seismic Walkdown Checklist (SWC)**

Equipment ID No.: 2MOV4142OP

Equipment Class: (8) Motor-Operated and Solenoid-Operated Valves

Equipment Description: REFUELING WATER TANK DISCHARGE

Project: CCNPP 2 SWEL

Location (Bldg, Elev, Room/Area): AUX, 45.00 ft, CAL-AB-440

Manufacturer/Model: \_\_\_\_\_

**Instructions for Completing Checklist**

This checklist may be used to document the results of the Seismic Walkdown of an item of equipment on the SWEL. The space below each of the following questions may be used to record the results of judgments and findings. Additional space is provided at the end of this checklist for documenting other comments.

**Anchorage**

1. Is anchorage configuration verification required (i.e., is the item one of the 50% of SWEL items requiring such verification)? No
  
2. Is the anchorage free of bent, broken, missing or loose hardware? Not Applicable
  
3. Is the anchorage free of corrosion that is more than mild surface oxidation? Not Applicable
  
4. Is the anchorage free of visible cracks in the concrete near the anchors? Not Applicable
  
5. Is the anchorage configuration consistent with plant documentation? (Note: This question only applies if the item is one of the 50% for which an anchorage configuration verification is required.) Not Applicable
  
6. Based on the above anchorage evaluations, is the anchorage free of potentially adverse seismic conditions? Yes



**ATTACHMENT 3**  
**WALKDOWN CHECKLISTS**

---

Status:  Y  N  U

**Seismic Walkdown Checklist (SWC)**

Equipment ID No.: 2MOV4142OP

Equipment Class: (8) Motor-Operated and Solenoid-Operated Valves

Equipment Description: REFUELING WATER TANK DISCHARGE

---

**Interaction Effects**

7. Are soft targets free from impact by nearby equipment or structures? Yes  
*A scaffold brace is in direct contact with insulation padding. Judged that the brace will not adversely affect MOV, therefore not a seismic concern.*
8. Are overhead equipment, distribution systems, ceiling tiles and lighting, and masonry block walls not likely to collapse onto the equipment? Yes  
*The overhead threaded fire piping with Victaulic coupling is suspended using clamps and is judged to be adequately supported and not a concern for spray or flooding.*
9. Do attached lines have adequate flexibility to avoid damage? Yes
10. Based on the above seismic interaction evaluations, is equipment free of potentially adverse seismic interaction effects? Yes
- 

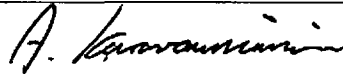
**Other Adverse Conditions**

11. Have you looked for and found no adverse seismic conditions that could adversely affect the safety functions of the equipment? Yes
- 

**Comments**

---

Evaluated by:



A. Karavoussianis

Date: 11/09/2012



C. Figliolini

11/09/2012

---

**Photos**

---

**ATTACHMENT 3**  
**WALKDOWN CHECKLISTS**

---

Status:  Y  N  U

**Seismic Walkdown Checklist (SWC)**

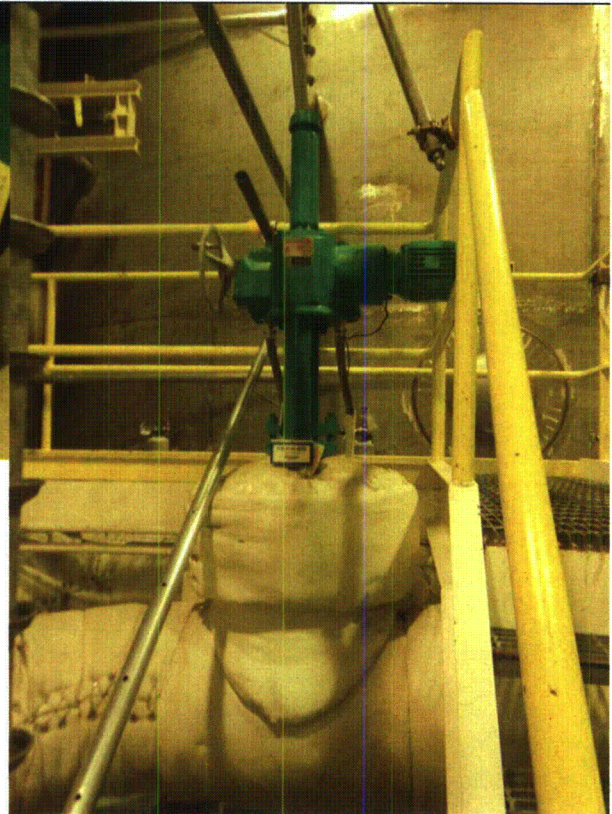
Equipment ID No.: 2MOV4142OP

Equipment Class: (8) Motor-Operated and Solenoid-Operated Valves

Equipment Description: REFUELING WATER TANK DISCHARGE



2MOV4142OP 8-16-12 229



2MOV4142OP 8-16-12 230



**ATTACHMENT 3**  
**WALKDOWN CHECKLISTS**

---

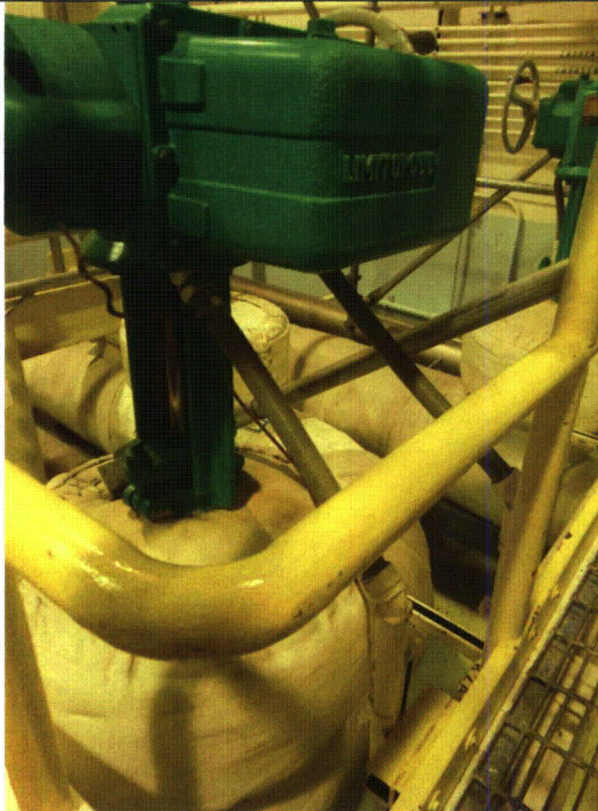
Status:  Y  N  U

**Seismic Walkdown Checklist (SWC)**

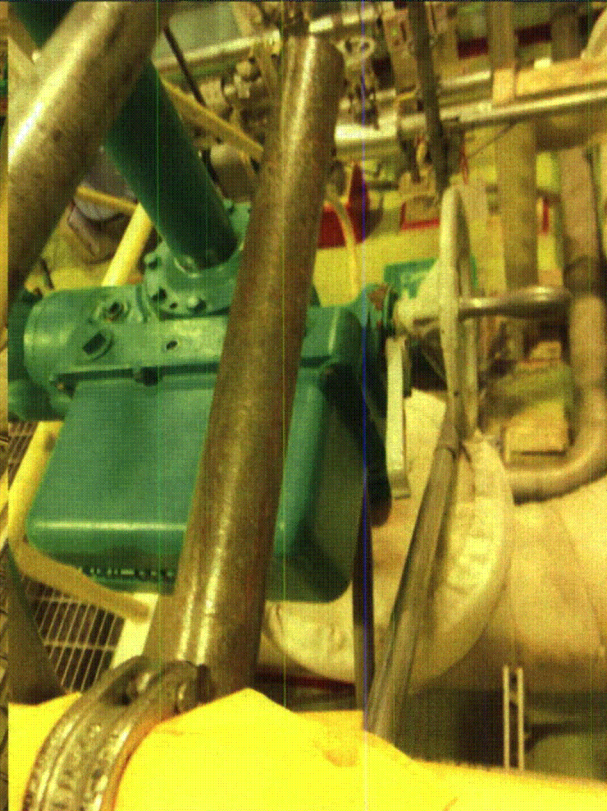
Equipment ID No.: 2MOV4142OP

Equipment Class: (8) Motor-Operated and Solenoid-Operated Valves

Equipment Description: REFUELING WATER TANK DISCHARGE



2MOV4142OP 8-16-12 231



2MOV4142OP 8-16-12 232



**ATTACHMENT 3**  
**WALKDOWN CHECKLISTS**

---

Status:  Y  N  U

**Seismic Walkdown Checklist (SWC)**

Equipment ID No.: 2MOV4142OP

Equipment Class: (8) Motor-Operated and Solenoid-Operated Valves

Equipment Description: REFUELING WATER TANK DISCHARGE

---



2MOV4142OP 8-16-12 233

---

**ATTACHMENT 3**  
**WALKDOWN CHECKLISTS**

---

Status:  Y  N  U

**Seismic Walkdown Checklist (SWC)**

Equipment ID No.: 2MOV4516

Equipment Class: (8) Motor-Operated and Solenoid-Operated Valves

Equipment Description: 21 SG FW ISOL

Project: CCNPP 2 SWEL

Location (Bldg, Elev, Room/Area): AUX, 27.00 ft, CAL-AB-309

Manufacturer/Model: \_\_\_\_\_

**Instructions for Completing Checklist**

This checklist may be used to document the results of the Seismic Walkdown of an item of equipment on the SWEL. The space below each of the following questions may be used to record the results of judgments and findings. Additional space is provided at the end of this checklist for documenting other comments.

**Anchorage**

1. Is anchorage configuration verification required (i.e., is the item one of the 50% of SWEL items requiring such verification)? No
  
2. Is the anchorage free of bent, broken, missing or loose hardware? Not Applicable
  
3. Is the anchorage free of corrosion that is more than mild surface oxidation? Not Applicable
  
4. Is the anchorage free of visible cracks in the concrete near the anchors? Not Applicable
  
5. Is the anchorage configuration consistent with plant documentation? (Note: This question only applies if the item is one of the 50% for which an anchorage configuration verification is required.) Not Applicable
  
6. Based on the above anchorage evaluations, is the anchorage free of potentially adverse seismic conditions? Yes

**ATTACHMENT 3**  
**WALKDOWN CHECKLISTS**

---

Status:  Y  N  U

**Seismic Walkdown Checklist (SWC)**

Equipment ID No.: 2MOV4516

Equipment Class: (8) Motor-Operated and Solenoid-Operated Valves

Equipment Description: 21 SG FW ISOL

---

**Interaction Effects**

7. Are soft targets free from impact by nearby equipment or structures? Yes
8. Are overhead equipment, distribution systems, ceiling tiles and lighting, and masonry block walls not likely to collapse onto the equipment? Yes
9. Do attached lines have adequate flexibility to avoid damage? Yes  
*Flex conduit is supported on a frame that is anchored to the ceiling. Flex has adequate flexibility therefore not a seismic concern.*
10. Based on the above seismic interaction evaluations, is equipment free of potentially adverse seismic interaction effects? Yes
- 

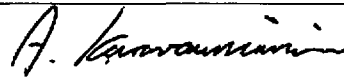
**Other Adverse Conditions**

11. Have you looked for and found no adverse seismic conditions that could adversely affect the safety functions of the equipment? Yes
- 

**Comments**

---

Evaluated by:



A. Karavoussianis

Date: 11/09/2012



C. Figliolini

11/09/2012

---

**Photos**

---



**ATTACHMENT 3**  
**WALKDOWN CHECKLISTS**

---

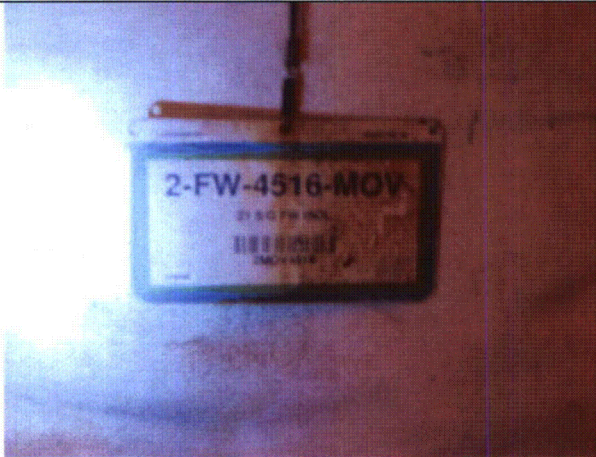
Status:  Y  N  U

**Seismic Walkdown Checklist (SWC)**

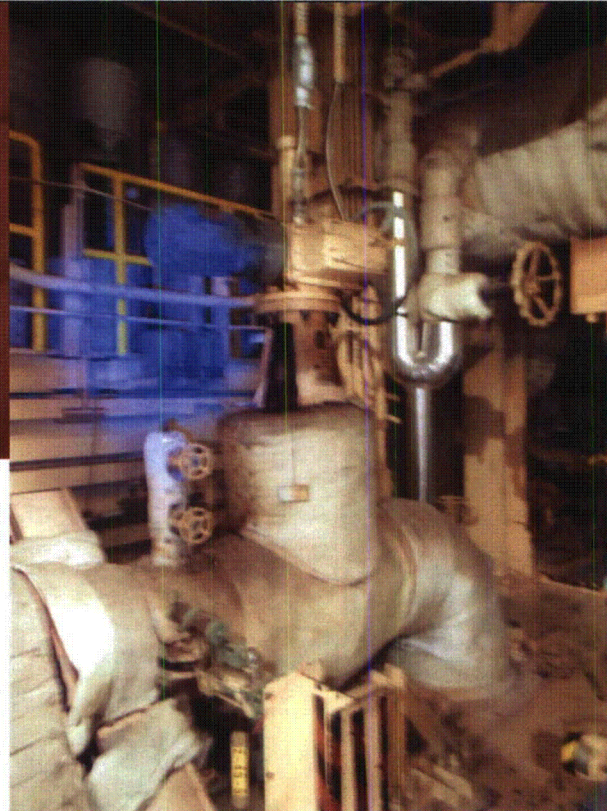
Equipment ID No.: 2MOV4516

Equipment Class: (8) Motor-Operated and Solenoid-Operated Valves

Equipment Description: 21 SG FW ISOL



2MOV4516 8-9-12 001



2MOV4516 8-9-12 002

**ATTACHMENT 3**  
**WALKDOWN CHECKLISTS**

---

Status:  Y  N  U

**Seismic Walkdown Checklist (SWC)**

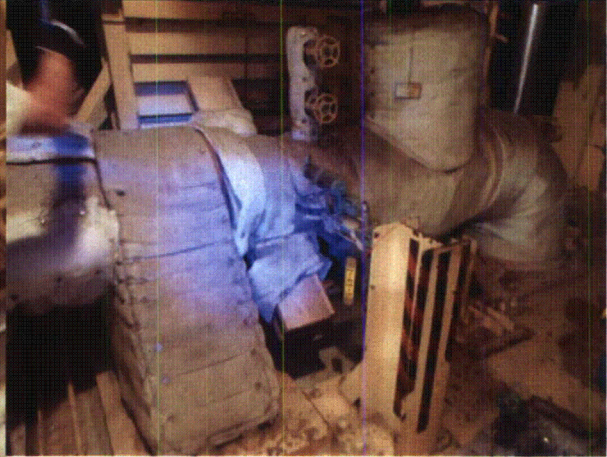
Equipment ID No.: 2MOV4516

Equipment Class: (8) Motor-Operated and Solenoid-Operated Valves

Equipment Description: 21 SG FW ISOL



2MOV4516 8-9-12 003



2MOV4516 8-9-12 004