

Status: Y N U

Seismic Walkdown Checklist (SWC)

Equipment ID No.: 2IP08E

Equipment Class: (16) Battery Chargers and Inverters

Equipment Description: INSTRUMENT BUS 214 INVERTER - DIV. 22

Project: Braidwood 2 SWEL

Location (Bldg, Elev, Room/Area): Auxiliary, 451.00 ft, ALL

Manufacturer/Model:

Instructions for Completing Checklist

This checklist may be used to document the results of the Seismic Walkdown of an item of equipment on the SWEL. The space below each of the following questions may be used to record the results of judgments and findings. Additional space is provided at the end of this checklist for documenting other comments.

Anchorage

1. Is anchorage configuration verification required (i.e., is the item one of the 50% of SWEL items requiring such verification)? Yes

2. Is the anchorage free of bent, broken, missing or loose hardware? Yes

3. Is the anchorage free of corrosion that is more than mild surface oxidation? Yes

4. Is the anchorage free of visible cracks in the concrete near the anchors? Yes

5. Is the anchorage configuration consistent with plant documentation? (Note: This question only applies if the item is one of the 50% for which an anchorage configuration verification is required.) Yes
Drawing 20E-0-3391BK Revision D
Anchor spacing is 10" at 2 locations while drawing specifies 12". NSWP-S-05 allows 2 diameter relocation which would equal 10" for 1" diameter expansion anchors therefore OK.

6. Based on the above anchorage evaluations, is the anchorage free of potentially adverse seismic conditions? Yes

Status: Y N U

Seismic Walkdown Checklist (SWC)

Equipment ID No.: 2IP08E

Equipment Class: (16) Battery Chargers and Inverters

Equipment Description: INSTRUMENT BUS 214 INVERTER - DIV. 22

Interaction Effects

7. Are soft targets free from impact by nearby equipment or structures? Yes
8. Are overhead equipment, distribution systems, ceiling tiles and lighting, and masonry block walls not likely to collapse onto the equipment? Yes
Seismic block walls.
No bulb guards on lights but they would not impact equipment if they fell. S&L Std E-103 -ok
9. Do attached lines have adequate flexibility to avoid damage? Yes
10. Based on the above seismic interaction evaluations, is equipment free of potentially adverse seismic interaction effects? Yes

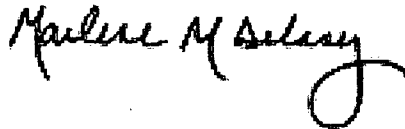
Other Adverse Conditions

11. Have you looked for and found no adverse seismic conditions that could adversely affect the safety functions of the equipment? Yes

Comments

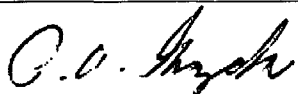
Seismic walkdown team M. Delaney & P. Gazda 7/31/12 am

Evaluated by:



Marlene Delaney

Date: 10/1/2012



Philip Gazda

10/1/2012

Status: Y N U

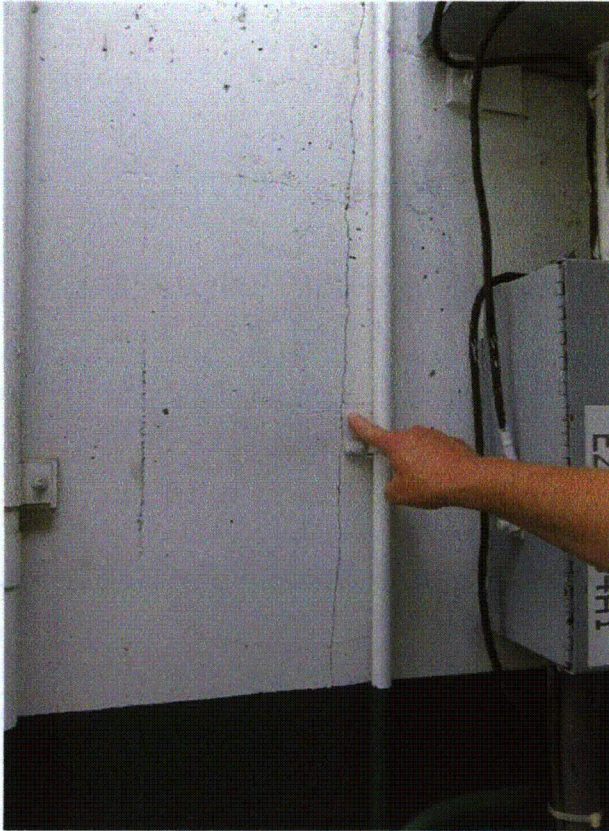
Seismic Walkdown Checklist (SWC)

Equipment ID No.: 2IP08E

Equipment Class: (16) Battery Chargers and Inverters

Equipment Description: INSTRUMENT BUS 214 INVERTER - DIV. 22

Photos



2IP08E (NP-6695) 7-31-12 023



2IP08E (NP-6695) 7-31-12 024

Status: Y N U

Seismic Walkdown Checklist (SWC)

Equipment ID No.: 2IP08E

Equipment Class: (16) Battery Chargers and Inverters

Equipment Description: INSTRUMENT BUS 214 INVERTER - DIV. 22



2IP08E (NP-6695) 7-31-12 025



2IP08E 7-31-12 020

Status: Y N U

Seismic Walkdown Checklist (SWC)

Equipment ID No.: 2IP08E

Equipment Class: (16) Battery Chargers and Inverters

Equipment Description: INSTRUMENT BUS 214 INVERTER - DIV. 22



2IP08E 7-31-12 021



2IP08E 7-31-12 022

Status: Y N U

Seismic Walkdown Checklist (SWC)

Equipment ID No.: 21Y-0606

Equipment Class: (18) Instruments on Racks

Equipment Description: RH HX 2A OUT I/P TRANSDUCER

Project: Braidwood 2 SWEL

Location (Bldg, Elev, Room/Area): Auxiliary, 364.00 ft, ALL

Manufacturer/Model:

Instructions for Completing Checklist

This checklist may be used to document the results of the Seismic Walkdown of an item of equipment on the SWEL. The space below each of the following questions may be used to record the results of judgments and findings. Additional space is provided at the end of this checklist for documenting other comments.

Anchorage

1. Is anchorage configuration verification required (i.e., is the item one of the 50% of SWEL items requiring such verification)? No

2. Is the anchorage free of bent, broken, missing or loose hardware? Not Applicable

3. Is the anchorage free of corrosion that is more than mild surface oxidation? Not Applicable

4. Is the anchorage free of visible cracks in the concrete near the anchors? Not Applicable

5. Is the anchorage configuration consistent with plant documentation? (Note: This question only applies if the item is one of the 50% for which an anchorage configuration verification is required.) Not Applicable

6. Based on the above anchorage evaluations, is the anchorage free of potentially adverse seismic conditions? Yes
Attached to well-anchored rack 2PL86J

Status: Y N U

Seismic Walkdown Checklist (SWC)

Equipment ID No.: 2IY-0606

Equipment Class: (18) Instruments on Racks

Equipment Description: RH HX 2A OUT I/P TRANSDUCER

Interaction Effects

7. Are soft targets free from impact by nearby equipment or structures? Yes
8. Are overhead equipment, distribution systems, ceiling tiles and lighting, and masonry block walls not likely to collapse onto the equipment? Yes
Overhead fire protection piping and HVAC is well-supported
9. Do attached lines have adequate flexibility to avoid damage? Yes
10. Based on the above seismic interaction evaluations, is equipment free of potentially adverse seismic interaction effects? Yes

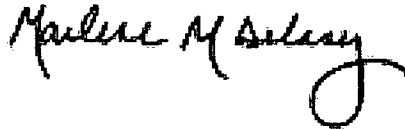
Other Adverse Conditions

11. Have you looked for and found no adverse seismic conditions that could adversely affect the safety functions of the equipment? Yes

Comments

Seismic walkdown team M. Delaney & P. Gazda 8/2/12 pm

Evaluated by:



Marlene Delaney

Date: 10/1/2012



Philip Gazda

10/1/2012

Status: Y N U

Seismic Walkdown Checklist (SWC)

Equipment ID No.: 2IY-0606

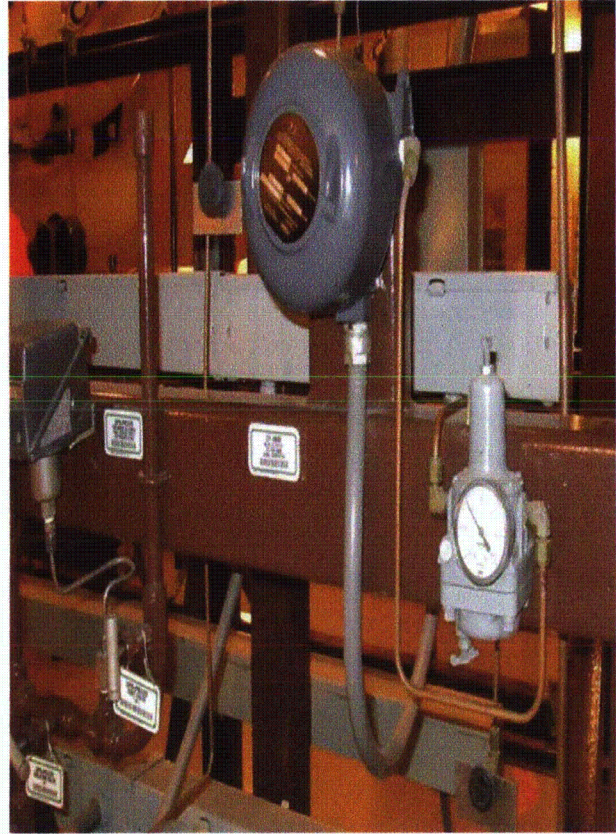
Equipment Class: (18) Instruments on Racks

Equipment Description: RH HX 2A OUT I/P TRANSDUCER

Photos



2IY-606 8-2-12 049



2IY-606 8-2-12 050

Status: Y N U

Seismic Walkdown Checklist (SWC)

Equipment ID No.: 2IY-0607

Equipment Class: (18) Instruments on Racks

Equipment Description: RH HX #2B OUT I/P TRANSDUCER

Project: Braidwood 2 SWEL

Location (Bldg, Elev, Room/Area): Auxiliary, 364.00 ft, ALL

Manufacturer/Model:

Instructions for Completing Checklist

This checklist may be used to document the results of the Seismic Walkdown of an item of equipment on the SWEL. The space below each of the following questions may be used to record the results of judgments and findings. Additional space is provided at the end of this checklist for documenting other comments.

Anchorage

1. Is anchorage configuration verification required (i.e., is the item one of the 50% of SWEL items requiring such verification)? No

2. Is the anchorage free of bent, broken, missing or loose hardware? Not Applicable

3. Is the anchorage free of corrosion that is more than mild surface oxidation? Not Applicable

4. Is the anchorage free of visible cracks in the concrete near the anchors? Not Applicable

5. Is the anchorage configuration consistent with plant documentation? (Note: This question only applies if the item is one of the 50% for which an anchorage configuration verification is required.) Not Applicable

6. Based on the above anchorage evaluations, is the anchorage free of potentially adverse seismic conditions? Yes
Well-supported rack

Status: Y N U

Seismic Walkdown Checklist (SWC)

Equipment ID No.: 2IY-0607

Equipment Class: (18) Instruments on Racks

Equipment Description: RH HX #2B OUT I/P TRANSDUCER

Interaction Effects

7. Are soft targets free from impact by nearby equipment or structures? Yes
8. Are overhead equipment, distribution systems, ceiling tiles and lighting, and masonry block walls not likely to collapse onto the equipment? Yes
Seismic block walls
9. Do attached lines have adequate flexibility to avoid damage? Yes
10. Based on the above seismic interaction evaluations, is equipment free of potentially adverse seismic interaction effects? Yes

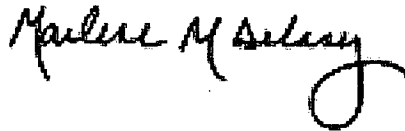
Other Adverse Conditions

11. Have you looked for and found no adverse seismic conditions that could adversely affect the safety functions of the equipment? Yes

Comments

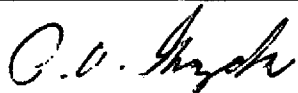
Seismic walkdown team M. Delaney & P. Gazda 8/2/12 pm

Evaluated by:



Marlene Delaney

Date: 10/1/2012



Philip Gazda

10/1/2012

Status: Y N U

Seismic Walkdown Checklist (SWC)

Equipment ID No.: 2IY-0607

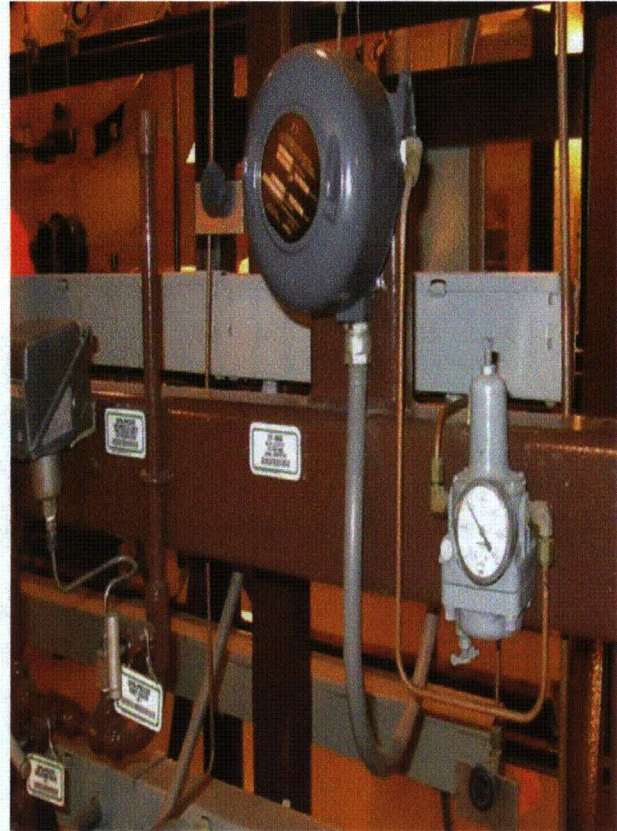
Equipment Class: (18) Instruments on Racks

Equipment Description: RH HX #2B OUT I/P TRANSDUCER

Photos



2IY-606 8-2-12 049



2IY-606 8-2-12 050

Status: Y N U

Seismic Walkdown Checklist (SWC)

Equipment ID No.: 2MS001C

Equipment Class: (7) Fluid-Operated Valves

Equipment Description: MS ISOL VLV LOOP 2C ASMBLY

Project: Braidwood 2 SWEL

Location (Bldg, Elev, Room/Area): Auxiliary, 377.00 ft, ALL

Manufacturer/Model:

Instructions for Completing Checklist

This checklist may be used to document the results of the Seismic Walkdown of an item of equipment on the SWEL. The space below each of the following questions may be used to record the results of judgments and findings. Additional space is provided at the end of this checklist for documenting other comments.

Anchorage

1. Is anchorage configuration verification required (i.e., is the item one of the 50% of SWEL items requiring such verification)? No

2. Is the anchorage free of bent, broken, missing or loose hardware? Not Applicable

3. Is the anchorage free of corrosion that is more than mild surface oxidation? Not Applicable

4. Is the anchorage free of visible cracks in the concrete near the anchors? Not Applicable

5. Is the anchorage configuration consistent with plant documentation? (Note: This question only applies if the item is one of the 50% for which an anchorage configuration verification is required.) Not Applicable

6. Based on the above anchorage evaluations, is the anchorage free of potentially adverse seismic conditions? Yes

Status: Y N U

Seismic Walkdown Checklist (SWC)

Equipment ID No.: 2MS001C

Equipment Class: (7) Fluid-Operated Valves

Equipment Description: MS ISOL VLV LOOP 2C ASMBLY

Interaction Effects

7. Are soft targets free from impact by nearby equipment or structures? Yes
8. Are overhead equipment, distribution systems, ceiling tiles and lighting, and masonry block walls not likely to collapse onto the equipment? Yes
9. Do attached lines have adequate flexibility to avoid damage? Yes
10. Based on the above seismic interaction evaluations, is equipment free of potentially adverse seismic interaction effects? Yes

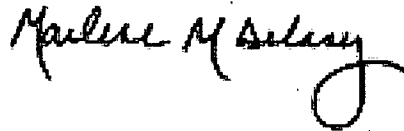
Other Adverse Conditions

11. Have you looked for and found no adverse seismic conditions that could adversely affect the safety functions of the equipment? Yes
Valve is robust

Comments

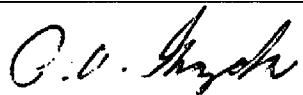
Seismic walkdown team M. Delaney & P. Gazda 7/31/12 pm

Evaluated by:



Marlene Delaney

Date: 10/1/2012



Philip Gazda

10/1/2012

Status: Y N U

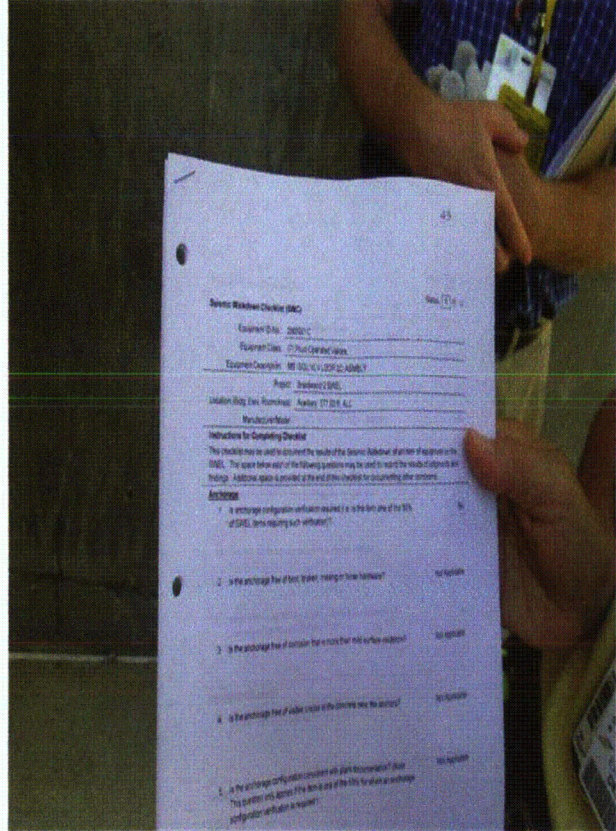
Seismic Walkdown Checklist (SWC)

Equipment ID No.: 2MS001C
 Equipment Class: (7) Fluid-Operated Valves
 Equipment Description: MS ISOL VLV LOOP 2C ASMBLY

Photos



2MS001C (AWB - DAMAGED ISOLATION JOINT AND WEATHER STRIP) 8-1-12 AM 008



2MS001C 8-1-12 AM 001

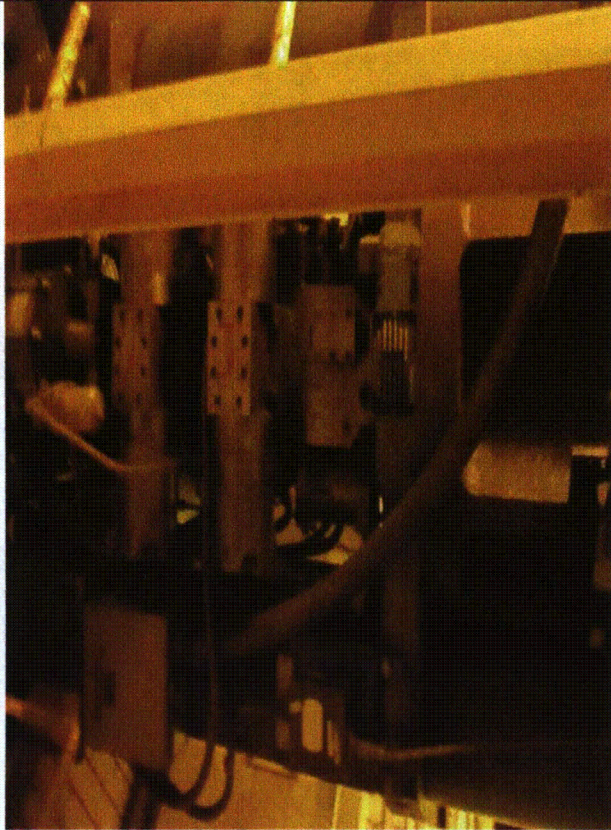
Status: Y N U

Seismic Walkdown Checklist (SWC)

Equipment ID No.: 2MS001C

Equipment Class: (7) Fluid-Operated Valves

Equipment Description: MS ISOL VLV LOOP 2C ASMBLY



2MS001C 8-1-12 AM 002



2MS001C 8-1-12 AM 003

Status: Y N U

Seismic Walkdown Checklist (SWC)

Equipment ID No.: 2MS018C

Equipment Class: (8) Motor-Operated and Solenoid-Operated Valves

Equipment Description: S/G 2C PORV

Project: Braidwood 2 SWEL

Location (Bldg, Elev, Room/Area): Auxiliary, 404.00 ft, ALL

Manufacturer/Model:

Instructions for Completing Checklist

This checklist may be used to document the results of the Seismic Walkdown of an item of equipment on the SWEL. The space below each of the following questions may be used to record the results of judgments and findings. Additional space is provided at the end of this checklist for documenting other comments.

Anchorage

1. Is anchorage configuration verification required (i.e., is the item one of the 50% of SWEL items requiring such verification)? No

2. Is the anchorage free of bent, broken, missing or loose hardware? Not Applicable

3. Is the anchorage free of corrosion that is more than mild surface oxidation? Not Applicable

4. Is the anchorage free of visible cracks in the concrete near the anchors? Not Applicable

5. Is the anchorage configuration consistent with plant documentation? (Note: This question only applies if the item is one of the 50% for which an anchorage configuration verification is required.) Not Applicable

6. Based on the above anchorage evaluations, is the anchorage free of potentially adverse seismic conditions? Yes

Status: Y N U

Seismic Walkdown Checklist (SWC)

Equipment ID No.: 2MS018C

Equipment Class: (8) Motor-Operated and Solenoid-Operated Valves

Equipment Description: S/G 2C PORV

Interaction Effects

7. Are soft targets free from impact by nearby equipment or structures? Yes
8. Are overhead equipment, distribution systems, ceiling tiles and lighting, and masonry block walls not likely to collapse onto the equipment? Yes
9. Do attached lines have adequate flexibility to avoid damage? Yes
10. Based on the above seismic interaction evaluations, is equipment free of potentially adverse seismic interaction effects? Yes

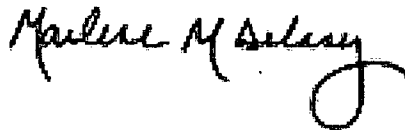
Other Adverse Conditions

11. Have you looked for and found no adverse seismic conditions that could adversely affect the safety functions of the equipment? Yes
Valve is robust

Comments

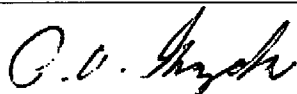
Seismic walkdown team M. Delaney & P. Gazda 8/1/12 am

Evaluated by:



Marlene Delaney

Date: 10/1/2012



Philip Gazda

10/1/2012

Status: Y N U

Seismic Walkdown Checklist (SWC)

Equipment ID No.: 2MS018C

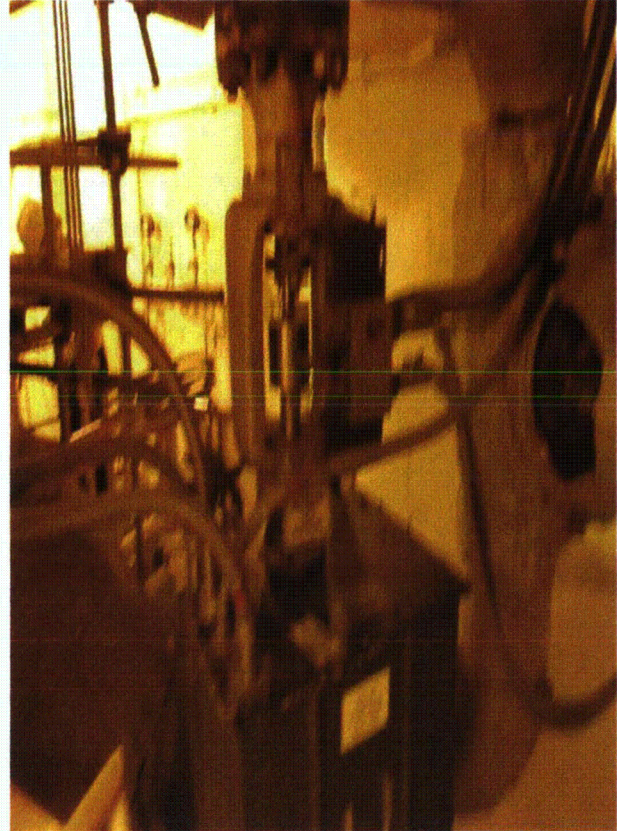
Equipment Class: (8) Motor-Operated and Solenoid-Operated Valves

Equipment Description: S/G 2C PORV

Photos



2MS018C 8-1-12 AM 004



2MS018C 8-1-12 AM 005

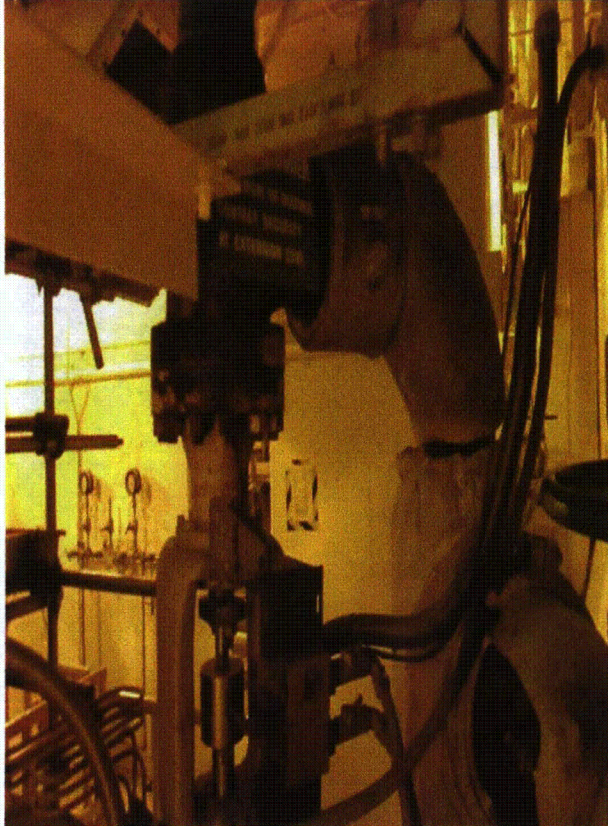
Status: Y N U

Seismic Walkdown Checklist (SWC)

Equipment ID No.: 2MS018C

Equipment Class: (8) Motor-Operated and Solenoid-Operated Valves

Equipment Description: S/G 2C PORV



2MS018C 8-1-12 AM 006



2MS018C 8-1-12 AM 007

Status: Y N U

Seismic Walkdown Checklist (SWC)

Equipment ID No.: 2MS018D

Equipment Class: (8) Motor-Operated and Solenoid-Operated Valves

Equipment Description: S/G 2D PORV ASMBLY

Project: Braidwood 2 SWEL

Location (Bldg, Elev, Room/Area): Auxiliary, 401.00 ft, ALL

Manufacturer/Model:

Instructions for Completing Checklist

This checklist may be used to document the results of the Seismic Walkdown of an item of equipment on the SWEL. The space below each of the following questions may be used to record the results of judgments and findings. Additional space is provided at the end of this checklist for documenting other comments.

Anchorage

1. Is anchorage configuration verification required (i.e., is the item one of the 50% of SWEL items requiring such verification)? No

2. Is the anchorage free of bent, broken, missing or loose hardware? Not Applicable

3. Is the anchorage free of corrosion that is more than mild surface oxidation? Not Applicable

4. Is the anchorage free of visible cracks in the concrete near the anchors? Not Applicable

5. Is the anchorage configuration consistent with plant documentation? (Note: This question only applies if the item is one of the 50% for which an anchorage configuration verification is required.) Not Applicable

6. Based on the above anchorage evaluations, is the anchorage free of potentially adverse seismic conditions? Yes

Status: Y N U

Seismic Walkdown Checklist (SWC)

Equipment ID No.: 2MS018D

Equipment Class: (8) Motor-Operated and Solenoid-Operated Valves

Equipment Description: S/G 2D PORV ASMBLY

Interaction Effects

7. Are soft targets free from impact by nearby equipment or structures? Yes
8. Are overhead equipment, distribution systems, ceiling tiles and lighting, and masonry block walls not likely to collapse onto the equipment? Yes
9. Do attached lines have adequate flexibility to avoid damage? Yes
10. Based on the above seismic interaction evaluations, is equipment free of potentially adverse seismic interaction effects? Yes

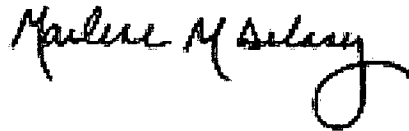
Other Adverse Conditions

11. Have you looked for and found no adverse seismic conditions that could adversely affect the safety functions of the equipment? Yes
Valve is robust

Comments

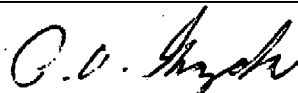
Seismic walkdown team M. Delaney & P. Gazda 8/1/12 am

Evaluated by:



Marlene Delaney

Date: 10/1/2012



Philip Gazda

10/1/2012

Status: Y N U

Seismic Walkdown Checklist (SWC)

Equipment ID No.: 2MS018D

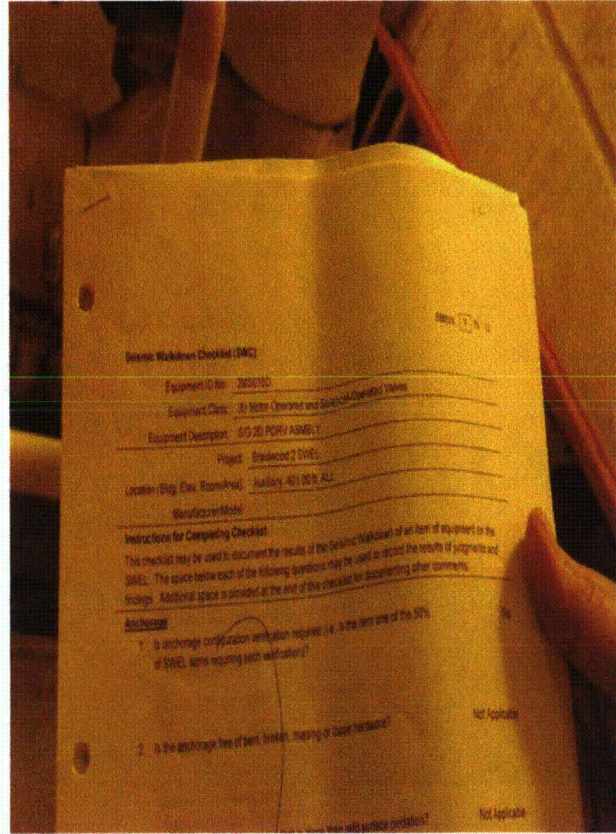
Equipment Class: (8) Motor-Operated and Solenoid-Operated Valves

Equipment Description: S/G 2D PORV ASMBLY

Photos



2MS018D (AWB - CHIN FALLO 8-1-12 AM 012



2MS018D 8-1-12 AM 009

Status: Y N U

Seismic Walkdown Checklist (SWC)

Equipment ID No.: 2MS018D

Equipment Class: (8) Motor-Operated and Solenoid-Operated Valves

Equipment Description: S/G 2D PORV ASMBLY



2MS018D 8-1-12 AM 010



2MS018D 8-1-12 AM 011

Status: Y N U

Seismic Walkdown Checklist (SWC)

Equipment ID No.: 2PA03J

Equipment Class: (20) Instrumentation and Control Panels and Cabinets

Equipment Description: PROTECTION SYSTEM CABINET (I&E Prot. Cab. CH 3)

Project: Braidwood 2 SWEL

Location (Bldg, Elev, Room/Area): Auxiliary, 451.00 ft, ALL

Manufacturer/Model:

Instructions for Completing Checklist

This checklist may be used to document the results of the Seismic Walkdown of an item of equipment on the SWEL. The space below each of the following questions may be used to record the results of judgments and findings. Additional space is provided at the end of this checklist for documenting other comments.

Anchorage

1. Is anchorage configuration verification required (i.e., is the item one of the 50% of SWEL items requiring such verification)? Yes

2. Is the anchorage free of bent, broken, missing or loose hardware? Yes

3. Is the anchorage free of corrosion that is more than mild surface oxidation? Yes

4. Is the anchorage free of visible cracks in the concrete near the anchors? Yes
Floor is tiled

5. Is the anchorage configuration consistent with plant documentation? (Note: This question only applies if the item is one of the 50% for which an anchorage configuration verification is required.) Yes
Drawing 20E-0-3391C Revision BM
Weld exceeds drawing requirement

6. Based on the above anchorage evaluations, is the anchorage free of potentially adverse seismic conditions? Yes

Status: Y N U

Seismic Walkdown Checklist (SWC)

Equipment ID No.: 2PA03J

Equipment Class: (20) Instrumentation and Control Panels and Cabinets

Equipment Description: PROTECTION SYSTEM CABINET (I&E Prot. Cab. CH 3)

Interaction Effects

7. Are soft targets free from impact by nearby equipment or structures? Yes
8. Are overhead equipment, distribution systems, ceiling tiles and lighting, and masonry block walls not likely to collapse onto the equipment? Yes
No bulb guards but lights wouldn't impact equipment if they fell. S&L Std E-103 -ok
9. Do attached lines have adequate flexibility to avoid damage? Yes
10. Based on the above seismic interaction evaluations, is equipment free of potentially adverse seismic interaction effects? Yes

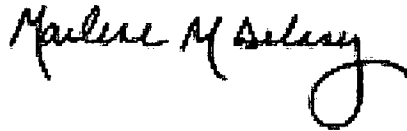
Other Adverse Conditions

11. Have you looked for and found no adverse seismic conditions that could adversely affect the safety functions of the equipment? Yes

Comments

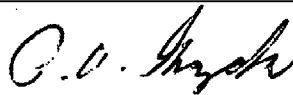
Seismic walkdown team M. Delaney & P. Gazda 7/31/12 am

Evaluated by:



Marlene Delaney

Date: 10/1/2012



Philip Gazda

10/1/2012

Status: Y N U

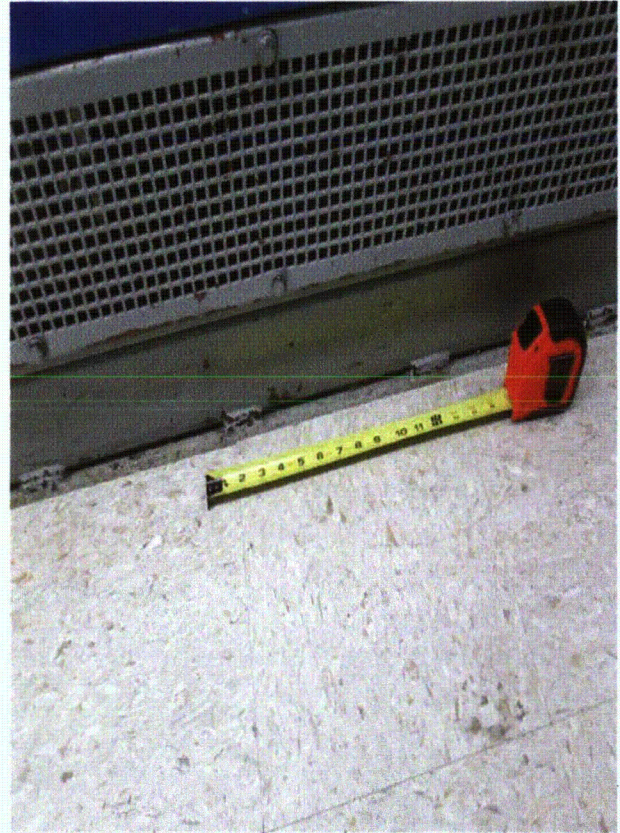
Seismic Walkdown Checklist (SWC)

Equipment ID No.: 2PA03J
Equipment Class: (20) Instrumentation and Control Panels and Cabinets
Equipment Description: PROTECTION SYSTEM CABINET (I&E Prot. Cab. CH 3)

Photos



2PA03J 7-31-12 035



2PA03J 7-31-12 036

Status: Y N U

Seismic Walkdown Checklist (SWC)

Equipment ID No.: 2PA09J

Equipment Class: (20) Instrumentation and Control Panels and Cabinets

Equipment Description: PROTECTION SYSTEM CABINET (SSPS Cab. Train A)

Project: Braidwood 2 SWEL

Location (Bldg, Elev, Room/Area): Auxiliary, 451.00 ft, ALL

Manufacturer/Model:

Instructions for Completing Checklist

This checklist may be used to document the results of the Seismic Walkdown of an item of equipment on the SWEL. The space below each of the following questions may be used to record the results of judgments and findings. Additional space is provided at the end of this checklist for documenting other comments.

Anchorage

1. Is anchorage configuration verification required (i.e., is the item one of the 50% of SWEL items requiring such verification)? Yes

2. Is the anchorage free of bent, broken, missing or loose hardware? Yes

3. Is the anchorage free of corrosion that is more than mild surface oxidation? Yes

4. Is the anchorage free of visible cracks in the concrete near the anchors? Yes
Floor is tiled

5. Is the anchorage configuration consistent with plant documentation? (Note: This question only applies if the item is one of the 50% for which an anchorage configuration verification is required.) Yes
Drawing 20E-0-3391C Revision BM
Weld exceeds drawing requirements

6. Based on the above anchorage evaluations, is the anchorage free of potentially adverse seismic conditions? Yes

Status: Y N U

Seismic Walkdown Checklist (SWC)

Equipment ID No.: 2PA09J

Equipment Class: (20) Instrumentation and Control Panels and Cabinets

Equipment Description: PROTECTION SYSTEM CABINET (SSPS Cab. Train A)

Interaction Effects

7. Are soft targets free from impact by nearby equipment or structures? Yes
8. Are overhead equipment, distribution systems, ceiling tiles and lighting, and masonry block walls not likely to collapse onto the equipment? Yes
No bulb guards but lights wouldn't damage equipment if they fell. S&L Std E-103 -ok
9. Do attached lines have adequate flexibility to avoid damage? Yes
10. Based on the above seismic interaction evaluations, is equipment free of potentially adverse seismic interaction effects? Yes

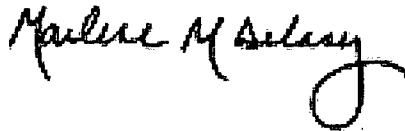
Other Adverse Conditions

11. Have you looked for and found no adverse seismic conditions that could adversely affect the safety functions of the equipment? Yes

Comments

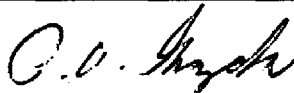
Seismic walkdown team M. Delaney & P. Gazda 7/31/12 am

Evaluated by:



Marlene Delaney

Date: 10/1/2012



Philip Gazda

10/1/2012

Status: Y N U

Seismic Walkdown Checklist (SWC)

Equipment ID No.: 2PA09J

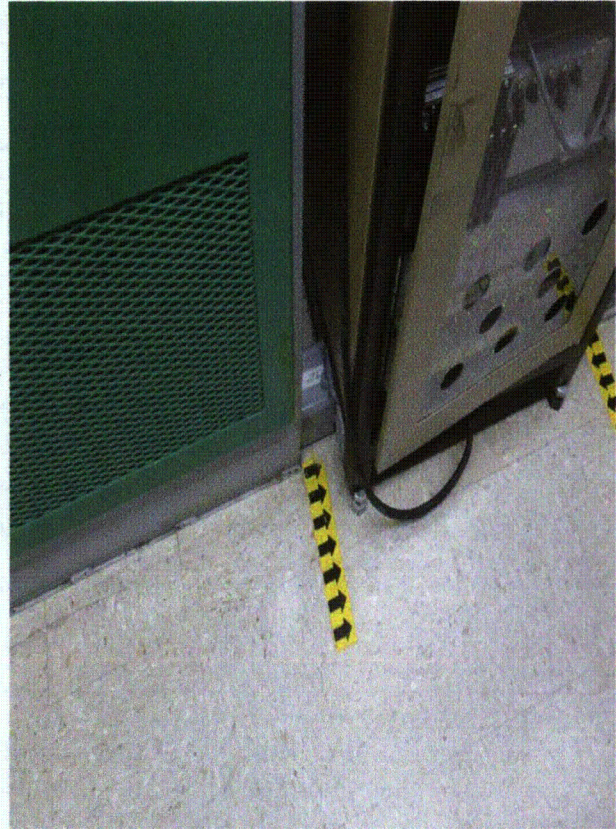
Equipment Class: (20) Instrumentation and Control Panels and Cabinets

Equipment Description: PROTECTION SYSTEM CABINET (SSPS Cab. Train A)

Photos



2PA 09J (AWB -MSAC TEST PANEL) 7-31-12 039



2PA 09J (AWB -MSAC TEST PANEL) 7-31-12 040

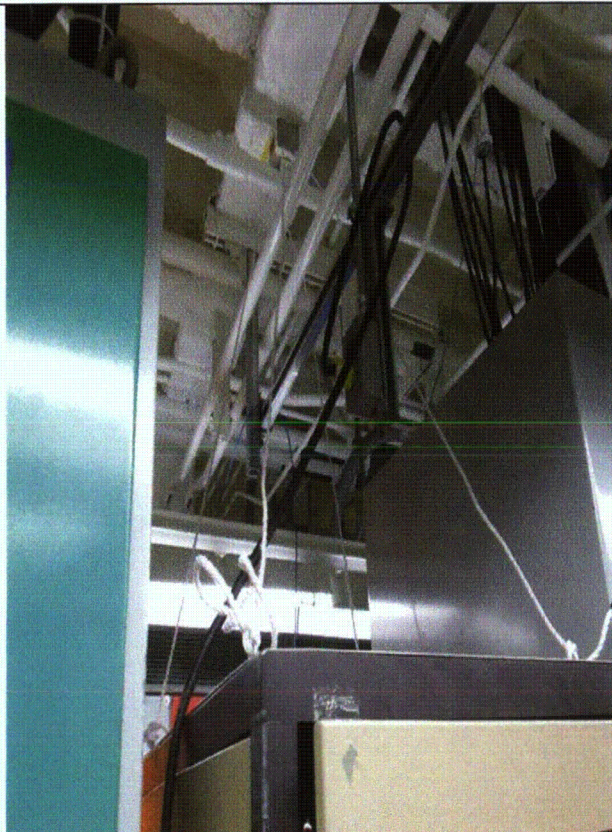
Status: Y N U

Seismic Walkdown Checklist (SWC)

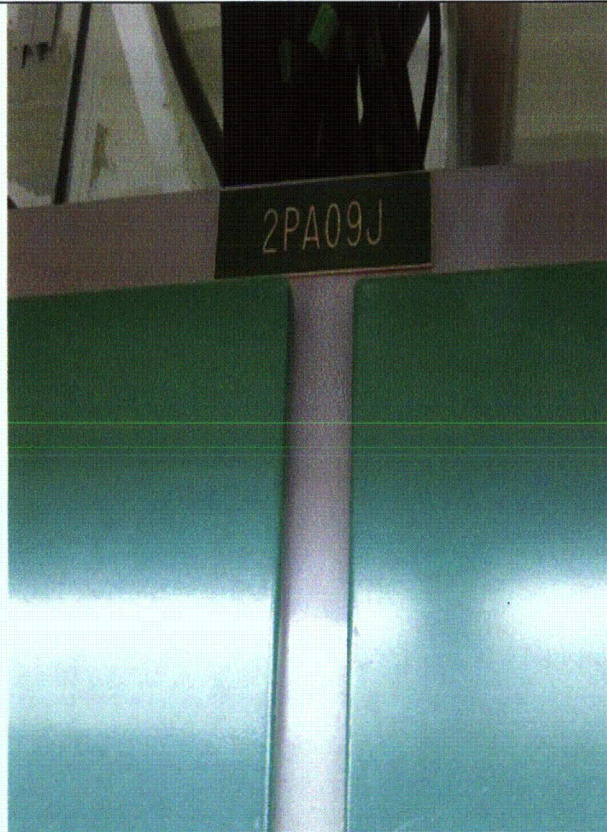
Equipment ID No.: 2PA09J

Equipment Class: (20) Instrumentation and Control Panels and Cabinets

Equipment Description: PROTECTION SYSTEM CABINET (SSPS Cab. Train A)



2PA 09J (AWB -MSAC TEST PANEL) 7-31-12 041



2PA09J 7-31-12 037

Status: Y N U

Seismic Walkdown Checklist (SWC)

Equipment ID No.: 2PA09J

Equipment Class: (20) Instrumentation and Control Panels and Cabinets

Equipment Description: PROTECTION SYSTEM CABINET (SSPS Cab. Train A)



2PA09J 7-31-12 038

Status: Y N U

Seismic Walkdown Checklist (SWC)

Equipment ID No.: 2PA27J

Equipment Class: (20) Instrumentation and Control Panels and Cabinets

Equipment Description: AUX SAFEGUARD RELAY CABINET (A)

Project: Braidwood 2 SWEL

Location (Bldg, Elev, Room/Area): Auxiliary, 451.00 ft, ALL

Manufacturer/Model:

Instructions for Completing Checklist

This checklist may be used to document the results of the Seismic Walkdown of an item of equipment on the SWEL. The space below each of the following questions may be used to record the results of judgments and findings. Additional space is provided at the end of this checklist for documenting other comments.

Anchorage

1. Is anchorage configuration verification required (i.e., is the item one of the 50% of SWEL items requiring such verification)? Yes

2. Is the anchorage free of bent, broken, missing or loose hardware? Yes

3. Is the anchorage free of corrosion that is more than mild surface oxidation? Yes

4. Is the anchorage free of visible cracks in the concrete near the anchors? Yes
Floor is tiled

5. Is the anchorage configuration consistent with plant documentation? (Note: This question only applies if the item is one of the 50% for which an anchorage configuration verification is required.) Yes
*Drawing 20E-0-3391C Revision BM
Weld exceeds drawing requirements*

6. Based on the above anchorage evaluations, is the anchorage free of potentially adverse seismic conditions? Yes

Status: Y N U

Seismic Walkdown Checklist (SWC)

Equipment ID No.: 2PA27J

Equipment Class: (20) Instrumentation and Control Panels and Cabinets

Equipment Description: AUX SAFEGUARD RELAY CABINET (A)

Interaction Effects

7. Are soft targets free from impact by nearby equipment or structures? Yes
8. Are overhead equipment, distribution systems, ceiling tiles and lighting, and masonry block walls not likely to collapse onto the equipment? Yes
No bulb guards on lights but would not damage equipment if they fell. S&L Std E-103 -ok
9. Do attached lines have adequate flexibility to avoid damage? Yes
10. Based on the above seismic interaction evaluations, is equipment free of potentially adverse seismic interaction effects? Yes

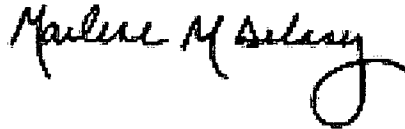
Other Adverse Conditions

11. Have you looked for and found no adverse seismic conditions that could adversely affect the safety functions of the equipment? Yes

Comments

Seismic walkdown team M. Delaney & P. Gazda 7/31/12 am

Evaluated by:



Marlene Delaney

Date: 10/1/2012



Philip Gazda

10/1/2012

Status: Y N U

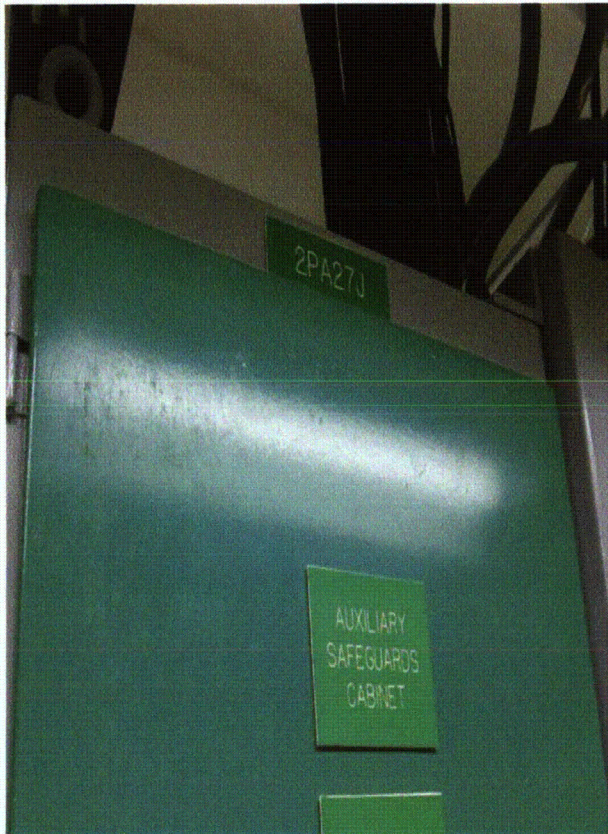
Seismic Walkdown Checklist (SWC)

Equipment ID No.: 2PA27J

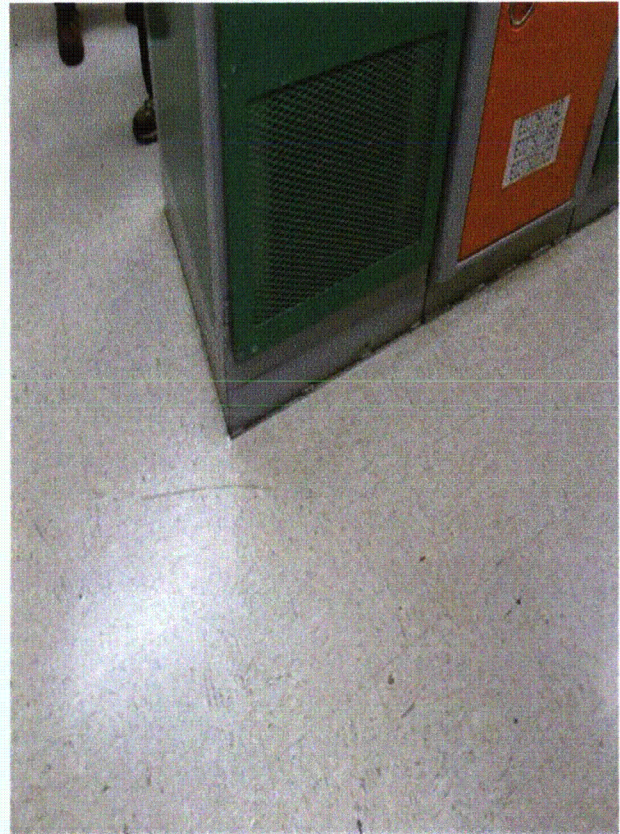
Equipment Class: (20) Instrumentation and Control Panels and Cabinets

Equipment Description: AUX SAFEGUARD RELAY CABINET (A)

Photos



2PA27J 7-31-12 042



2PA27J 7-31-12 043

Status: Y N U

Seismic Walkdown Checklist (SWC)

Equipment ID No.: 2PA27J

Equipment Class: (20) Instrumentation and Control Panels and Cabinets

Equipment Description: AUX SAFEGUARD RELAY CABINET (A)



2PA27J 7-31-12 044

Status: Y N U

Seismic Walkdown Checklist (SWC)

Equipment ID No.: 2PI-0633

Equipment Class: (18) Instruments on Racks

Equipment Description: SFP PMP SUCTION PRESSURE INDICATOR

Project: Braidwood 2 SWEL

Location (Bldg, Elev, Room/Area): FH, 401.00 ft, ALL

Manufacturer/Model:

Instructions for Completing Checklist

This checklist may be used to document the results of the Seismic Walkdown of an item of equipment on the SWEL. The space below each of the following questions may be used to record the results of judgments and findings. Additional space is provided at the end of this checklist for documenting other comments.

Anchorage

1. Is anchorage configuration verification required (i.e., is the item one of the 50% of SWEL items requiring such verification)? No

2. Is the anchorage free of bent, broken, missing or loose hardware? Not Applicable

3. Is the anchorage free of corrosion that is more than mild surface oxidation? Not Applicable

4. Is the anchorage free of visible cracks in the concrete near the anchors? Not Applicable

5. Is the anchorage configuration consistent with plant documentation? (Note: This question only applies if the item is one of the 50% for which an anchorage configuration verification is required.) Not Applicable

6. Based on the above anchorage evaluations, is the anchorage free of potentially adverse seismic conditions? Yes
Rack mounted to wall
Nut at 7:00 location is loose. Two other screws are tight and are more than adequate to support small weight of pressure indicator. No immediate concern. IR 1394916 was written.

Status: Y N U

Seismic Walkdown Checklist (SWC)

Equipment ID No.: 2PI-0633

Equipment Class: (18) Instruments on Racks

Equipment Description: SFP PMP SUCTION PRESSURE INDICATOR

Interaction Effects

7. Are soft targets free from impact by nearby equipment or structures? Yes
8. Are overhead equipment, distribution systems, ceiling tiles and lighting, and masonry block walls not likely to collapse onto the equipment? Yes
9. Do attached lines have adequate flexibility to avoid damage? Yes
10. Based on the above seismic interaction evaluations, is equipment free of potentially adverse seismic interaction effects? Yes

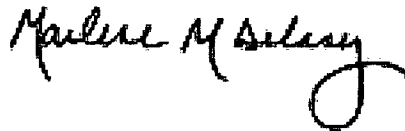
Other Adverse Conditions

11. Have you looked for and found no adverse seismic conditions that could adversely affect the safety functions of the equipment? Yes

Comments

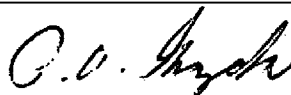
Seismic walkdown team M. Delaney & P. Gazda 7/30/12 pm

Evaluated by:



Marlene Delaney

Date: 10/1/2012



Philip Gazda

10/1/2012

Status: Y N U

Seismic Walkdown Checklist (SWC)

Equipment ID No.: 2PI-0633

Equipment Class: (18) Instruments on Racks

Equipment Description: SFP PMP SUCTION PRESSURE INDICATOR

Photos



2PI-0633 7-30-12 PM 001

Status: Y N U

Seismic Walkdown Checklist (SWC)

Equipment ID No.: 2PL07J

Equipment Class: (20) Instrumentation and Control Panels and Cabinets

Equipment Description: 2A DG 1DG01KA CONTROL PANEL

Project: Braidwood 2 SWEL

Location (Bldg, Elev, Room/Area): Auxiliary, 401.00 ft, ALL

Manufacturer/Model:

Instructions for Completing Checklist

This checklist may be used to document the results of the Seismic Walkdown of an item of equipment on the SWEL. The space below each of the following questions may be used to record the results of judgments and findings. Additional space is provided at the end of this checklist for documenting other comments.

Anchorage

1. Is anchorage configuration verification required (i.e., is the item one of the 50% of SWEL items requiring such verification)? No

2. Is the anchorage free of bent, broken, missing or loose hardware? Yes

3. Is the anchorage free of corrosion that is more than mild surface oxidation? Yes

4. Is the anchorage free of visible cracks in the concrete near the anchors? Yes
Floor is coated

5. Is the anchorage configuration consistent with plant documentation? (Note: This question only applies if the item is one of the 50% for which an anchorage configuration verification is required.) Not Applicable

6. Based on the above anchorage evaluations, is the anchorage free of potentially adverse seismic conditions? Yes

Status: Y N U

Seismic Walkdown Checklist (SWC)

Equipment ID No.: 2PL07J

Equipment Class: (20) Instrumentation and Control Panels and Cabinets

Equipment Description: 2A DG 1DG01KA CONTROL PANEL

Interaction Effects

7. Are soft targets free from impact by nearby equipment or structures? Yes
8. Are overhead equipment, distribution systems, ceiling tiles and lighting, and masonry block walls not likely to collapse onto the equipment? Yes
Overhead HVAC well-supported
9. Do attached lines have adequate flexibility to avoid damage? Yes
10. Based on the above seismic interaction evaluations, is equipment free of potentially adverse seismic interaction effects? Yes

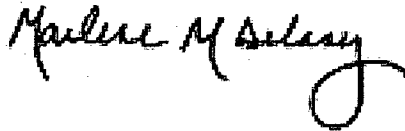
Other Adverse Conditions

11. Have you looked for and found no adverse seismic conditions that could adversely affect the safety functions of the equipment? Yes

Comments

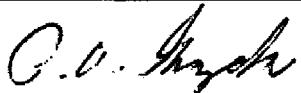
Seismic walkdown team M. Delaney & P. Gazda 7/31/12 pm

Evaluated by:



Marlene Delaney

Date: 10/1/2012



Philip Gazda

10/1/2012

Status: Y N U

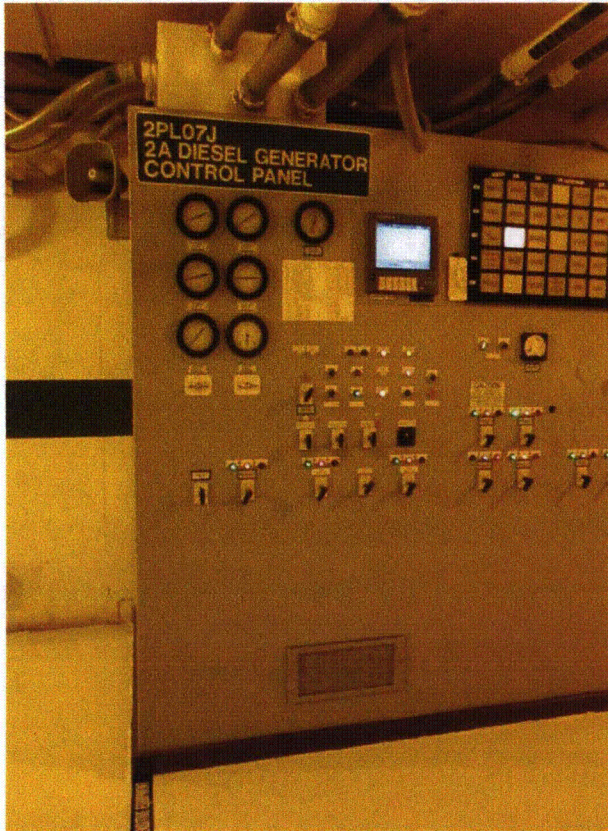
Seismic Walkdown Checklist (SWC)

Equipment ID No.: 2PL07J

Equipment Class: (20) Instrumentation and Control Panels and Cabinets

Equipment Description: 2A DG 1DG01KA CONTROL PANEL

Photos



2PL07J 7-31-12 095



2PL07J 7-31-12 096

Status: Y N U

Seismic Walkdown Checklist (SWC)

Equipment ID No.: 2PL08J

Equipment Class: (20) Instrumentation and Control Panels and Cabinets

Equipment Description: 2B DG 2DG01KB

Project: Braidwood 2 SWEL

Location (Bldg, Elev, Room/Area): Auxiliary, 401.00 ft, ALL

Manufacturer/Model:

Instructions for Completing Checklist

This checklist may be used to document the results of the Seismic Walkdown of an item of equipment on the SWEL. The space below each of the following questions may be used to record the results of judgments and findings. Additional space is provided at the end of this checklist for documenting other comments.

Anchorage

1. Is anchorage configuration verification required (i.e., is the item one of the 50% of SWEL items requiring such verification)? No

2. Is the anchorage free of bent, broken, missing or loose hardware? Yes

3. Is the anchorage free of corrosion that is more than mild surface oxidation? Yes

4. Is the anchorage free of visible cracks in the concrete near the anchors? Yes

5. Is the anchorage configuration consistent with plant documentation? (Note: This question only applies if the item is one of the 50% for which an anchorage configuration verification is required.) Not Applicable

6. Based on the above anchorage evaluations, is the anchorage free of potentially adverse seismic conditions? Yes

Status: Y N U

Seismic Walkdown Checklist (SWC)

Equipment ID No.: 2PL08J

Equipment Class: (20) Instrumentation and Control Panels and Cabinets

Equipment Description: 2B DG 2DG01KB

Interaction Effects

7. Are soft targets free from impact by nearby equipment or structures? Yes
8. Are overhead equipment, distribution systems, ceiling tiles and lighting, and masonry block walls not likely to collapse onto the equipment? Yes
9. Do attached lines have adequate flexibility to avoid damage? Yes
10. Based on the above seismic interaction evaluations, is equipment free of potentially adverse seismic interaction effects? Yes

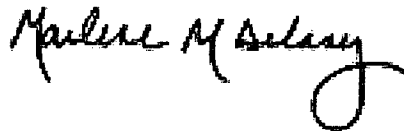
Other Adverse Conditions

11. Have you looked for and found no adverse seismic conditions that could adversely affect the safety functions of the equipment? Yes
Small hairline crack in wall is not a structural/seismic issue

Comments

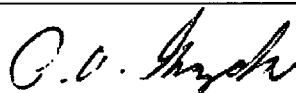
Seismic walkdown team M. Delaney & P. Gazda 7/31/12

Evaluated by:



Marlene Delaney

Date: 10/1/12



Philip Gazda

10/1/12

Status: Y N U

Seismic Walkdown Checklist (SWC)

Equipment ID No.: 2PL08J

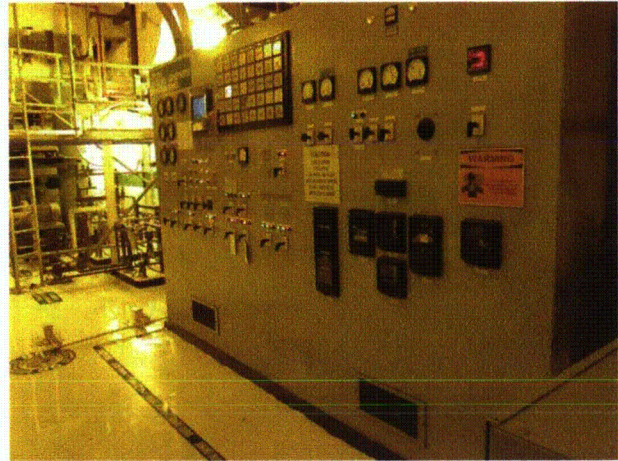
Equipment Class: (20) Instrumentation and Control Panels and Cabinets

Equipment Description: 2B DG 2DG01KB

Photos



2PL08J (NP-6695)7-31-12 105



2PL08J 7-31-12 104

Status: Y N U

Seismic Walkdown Checklist (SWC)

Equipment ID No.: 2PM05J

Equipment Class: (20) Instrumentation and Control Panels and Cabinets

Equipment Description: MAIN CONTROL BOARD

Project: Braidwood 2 SWEL

Location (Bldg, Elev, Room/Area): Auxiliary, 451.00 ft, ALL

Manufacturer/Model:

Instructions for Completing Checklist

This checklist may be used to document the results of the Seismic Walkdown of an item of equipment on the SWEL. The space below each of the following questions may be used to record the results of judgments and findings. Additional space is provided at the end of this checklist for documenting other comments.

Anchorage

1. Is anchorage configuration verification required (i.e., is the item one of the 50% of SWEL items requiring such verification)? Yes

2. Is the anchorage free of bent, broken, missing or loose hardware? Yes

3. Is the anchorage free of corrosion that is more than mild surface oxidation? Yes

4. Is the anchorage free of visible cracks in the concrete near the anchors? Yes

5. Is the anchorage configuration consistent with plant documentation? (Note: This question only applies if the item is one of the 50% for which an anchorage configuration verification is required.) Yes
Drawing 20E-0-3391AN Revision U. Additional detailed information from Calculation Detail #8276 Revision B pages 2 to 6 which is input into Structural Calculation 7.16.10.2 (2/13/85).

Due to configuration of the panels and the control room, it is not possible to verify all the welds (front/back, interior/exterior) for the control room panels. Welds that are seen are good, matching the drawings and other inputs without cracks, corrosion, etc. Cabinets opened for inspection.

Status: Y N U

Seismic Walkdown Checklist (SWC)

Equipment ID No.: 2PM05J

Equipment Class: (20) Instrumentation and Control Panels and Cabinets

Equipment Description: MAIN CONTROL BOARD

-
- | | | |
|----|--|-----|
| 6. | Based on the above anchorage evaluations, is the anchorage free of potentially adverse seismic conditions? | Yes |
|----|--|-----|

Interaction Effects

- | | | |
|-----|--|-----|
| 7. | Are soft targets free from impact by nearby equipment or structures? | Yes |
| 8. | Are overhead equipment, distribution systems, ceiling tiles and lighting, and masonry block walls not likely to collapse onto the equipment?
<i>See associated area walk-by</i> | Yes |
| 9. | Do attached lines have adequate flexibility to avoid damage? | Yes |
| 10. | Based on the above seismic interaction evaluations, is equipment free of potentially adverse seismic interaction effects? | Yes |

Other Adverse Conditions

- | | | |
|-----|---|-----|
| 11. | Have you looked for and found no adverse seismic conditions that could adversely affect the safety functions of the equipment?
<i>No structural/seismic issues</i> | Yes |
|-----|---|-----|

Comments

Seismic walkdown team M. Delaney & P. Gazda 7/31/12 am

Status: Y N U

Seismic Walkdown Checklist (SWC)

Equipment ID No.: 2PM05J

Equipment Class: (20) Instrumentation and Control Panels and Cabinets

Equipment Description: MAIN CONTROL BOARD

Marlene M Delaney

Evaluated by:

Marlene Delaney

Date: 10/1/2012

P. O. Gazda

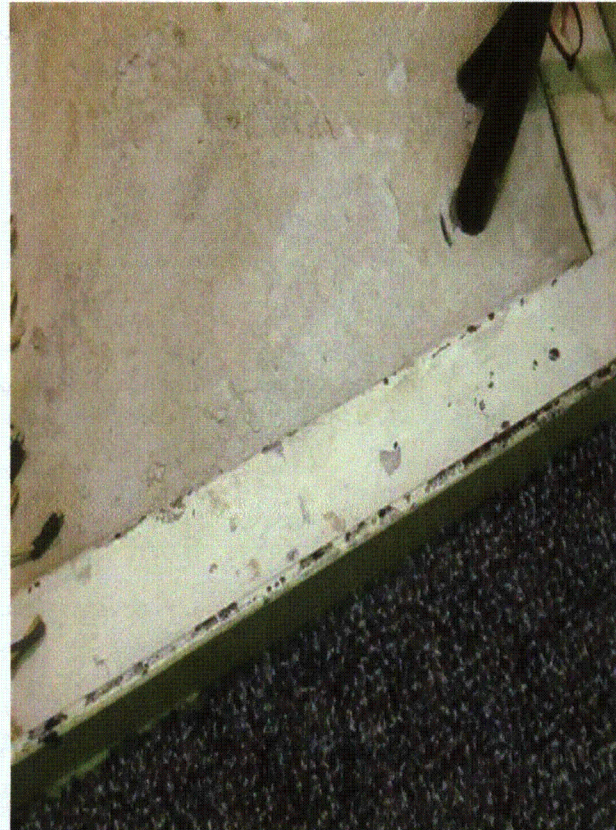
Philip Gazda

10/1/2012

Photos



2PM05J 7-31-12 045



2PM05J 7-31-12 046

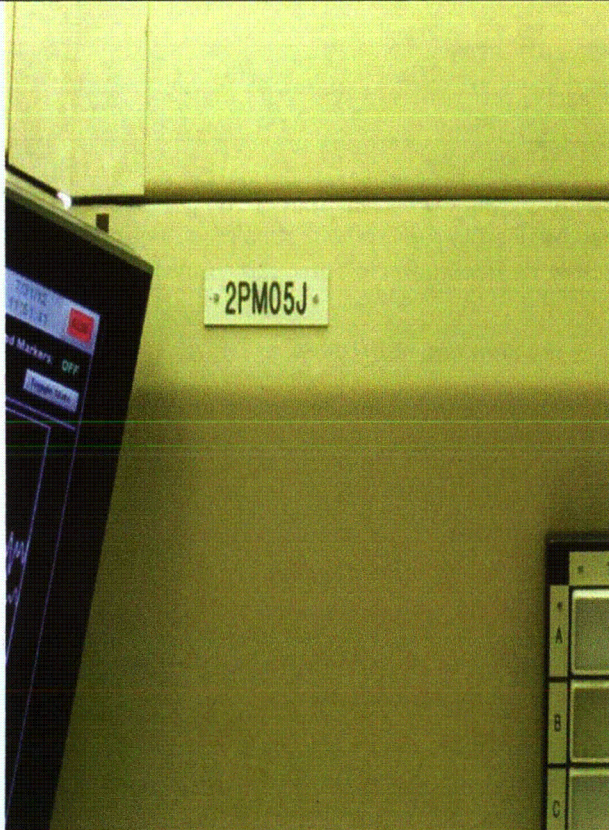
Status: Y N U

Seismic Walkdown Checklist (SWC)

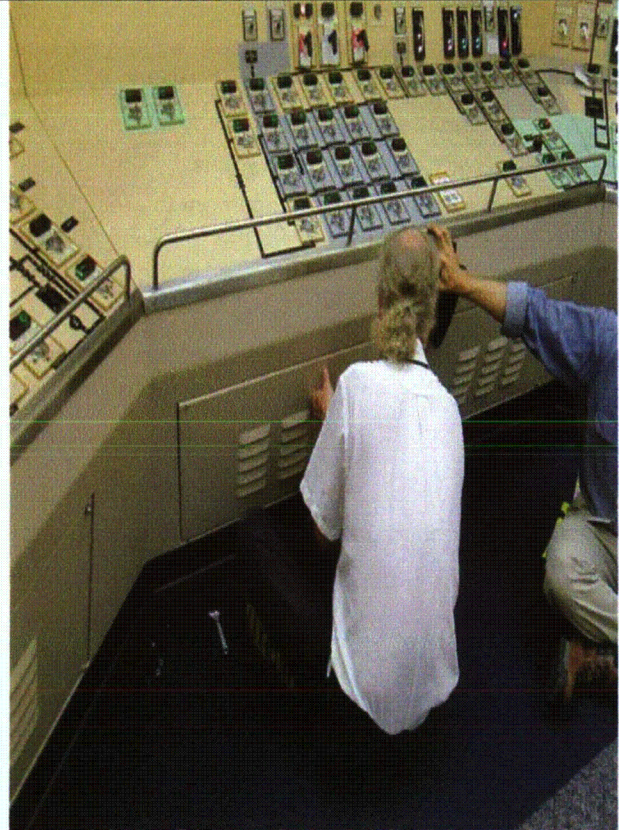
Equipment ID No.: 2PM05J

Equipment Class: (20) Instrumentation and Control Panels and Cabinets

Equipment Description: MAIN CONTROL BOARD



2PM05J 7-31-12 054



2PM05J 7-31-12 055

Status: Y N U

Seismic Walkdown Checklist (SWC)

Equipment ID No.: 2PM06J

Equipment Class: (20) Instrumentation and Control Panels and Cabinets

Equipment Description: MAIN CONTROL BOARD

Project: Braidwood 2 SWEL

Location (Bldg, Elev, Room/Area): Auxiliary, 451.00 ft, ALL

Manufacturer/Model:

Instructions for Completing Checklist

This checklist may be used to document the results of the Seismic Walkdown of an item of equipment on the SWEL. The space below each of the following questions may be used to record the results of judgments and findings. Additional space is provided at the end of this checklist for documenting other comments.

Anchorage

1. Is anchorage configuration verification required (i.e., is the item one of the 50% of SWEL items requiring such verification)? Yes

2. Is the anchorage free of bent, broken, missing or loose hardware? Yes

3. Is the anchorage free of corrosion that is more than mild surface oxidation? Yes

4. Is the anchorage free of visible cracks in the concrete near the anchors? Yes

5. Is the anchorage configuration consistent with plant documentation? (Note: This question only applies if the item is one of the 50% for which an anchorage configuration verification is required.) Yes
Drawing 20E-0-3391AN Revision U. Additional detailed information from Calculation Detail #8276 Revision B pages 7 to 9 which is input into Structural Calculation 7.16.10.2 (2/13/85).

Due to configuration of the panels and the control room, it is not possible to verify all the welds (front/back, interior/exterior) for the control room panels. Welds that are seen are good, matching the drawings and other inputs without cracks, corrosion, etc.

Status: Y N U

Seismic Walkdown Checklist (SWC)

Equipment ID No.: 2PM06J

Equipment Class: (20) Instrumentation and Control Panels and Cabinets

Equipment Description: MAIN CONTROL BOARD

-
- | | | |
|----|--|-----|
| 6. | Based on the above anchorage evaluations, is the anchorage free of potentially adverse seismic conditions? | Yes |
|----|--|-----|

Interaction Effects

- | | | |
|-----|---|-----|
| 7. | Are soft targets free from impact by nearby equipment or structures? | Yes |
| 8. | Are overhead equipment, distribution systems, ceiling tiles and lighting, and masonry block walls not likely to collapse onto the equipment?
<i>see associated area walk-by (AWC 13)</i> | Yes |
| 9. | Do attached lines have adequate flexibility to avoid damage? | Yes |
| 10. | Based on the above seismic interaction evaluations, is equipment free of potentially adverse seismic interaction effects? | Yes |

Other Adverse Conditions

- | | | |
|-----|--|-----|
| 11. | Have you looked for and found no adverse seismic conditions that could adversely affect the safety functions of the equipment? | Yes |
|-----|--|-----|

Comments

Seismic walkdown team M. Delaney & P. Gazda 7/31/12 am

Status: Y N U

Seismic Walkdown Checklist (SWC)

Equipment ID No.: 2PM06J

Equipment Class: (20) Instrumentation and Control Panels and Cabinets

Equipment Description: MAIN CONTROL BOARD

Marlene M Delaney

Evaluated by:

Marlene Delaney

Date: 10/1/2012

P. O. Gazda

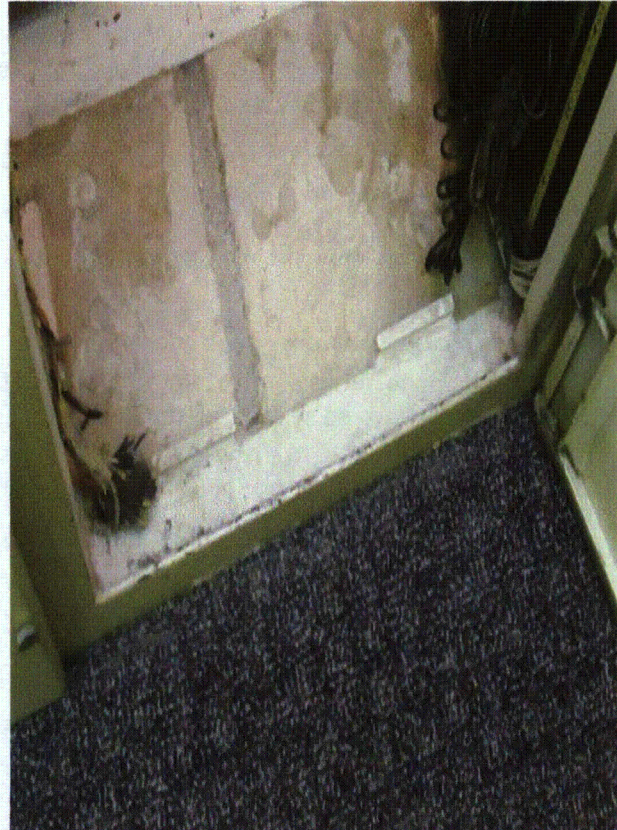
Philip Gazda

10/1/2012

Photos



2PM06J 7-31-12 048



2PM06J 7-31-12 049

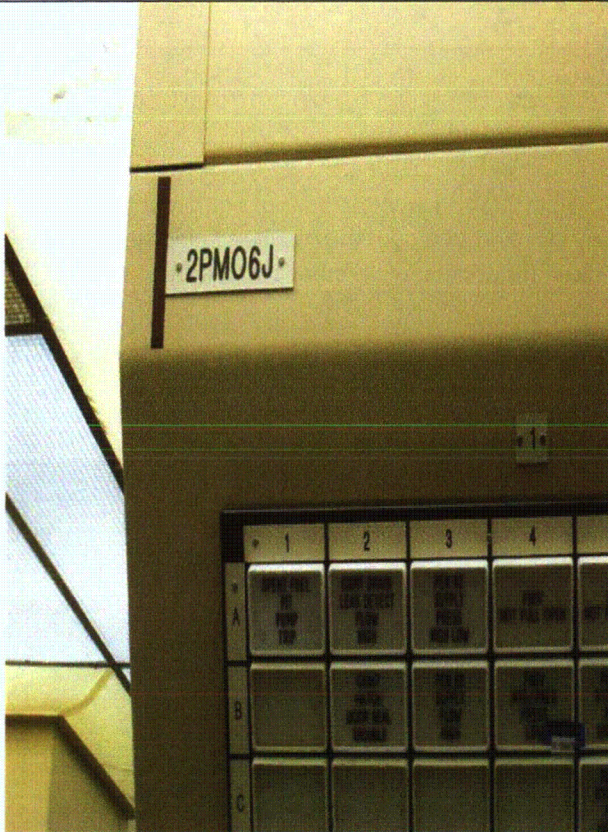
Status: Y N U

Seismic Walkdown Checklist (SWC)

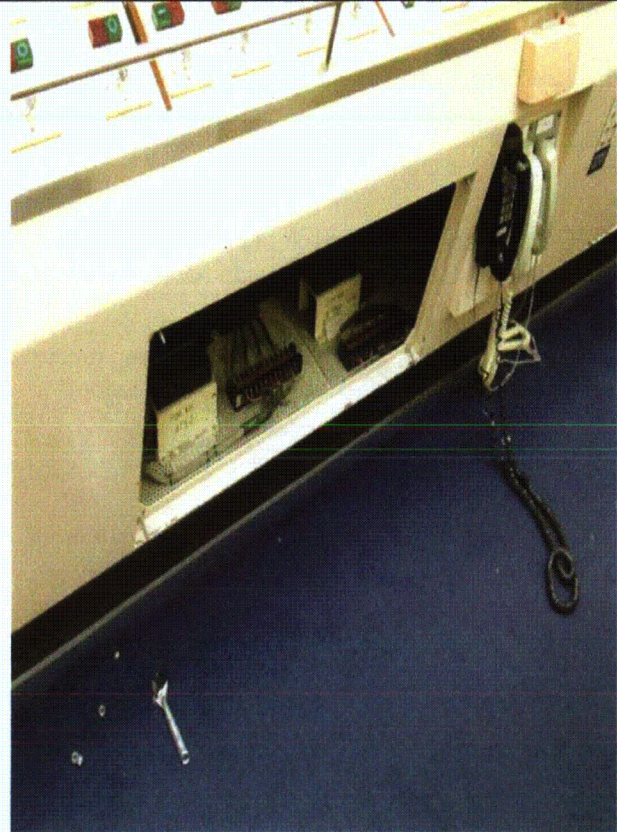
Equipment ID No.: 2PM06J

Equipment Class: (20) Instrumentation and Control Panels and Cabinets

Equipment Description: MAIN CONTROL BOARD



2PM06J 7-31-12 052



2PM06J 7-31-12 053

Status: Y N U

Seismic Walkdown Checklist (SWC)

Equipment ID No.: 2PM07J

Equipment Class: (20) Instrumentation and Control Panels and Cabinets

Equipment Description: MAIN CONTROL BOARD

Project: Braidwood 2 SWEL

Location (Bldg, Elev, Room/Area): Auxiliary, 451.00 ft, ALL

Manufacturer/Model:

Instructions for Completing Checklist

This checklist may be used to document the results of the Seismic Walkdown of an item of equipment on the SWEL. The space below each of the following questions may be used to record the results of judgments and findings. Additional space is provided at the end of this checklist for documenting other comments.

Anchorage

1. Is anchorage configuration verification required (i.e., is the item one of the 50% of SWEL items requiring such verification)? Yes

2. Is the anchorage free of bent, broken, missing or loose hardware? Yes

3. Is the anchorage free of corrosion that is more than mild surface oxidation? Yes

4. Is the anchorage free of visible cracks in the concrete near the anchors? Yes

5. Is the anchorage configuration consistent with plant documentation? (Note: This question only applies if the item is one of the 50% for which an anchorage configuration verification is required.) Yes
Drawing 20E-0-3391AJ Revision F.

Due to configuration of the panels and the control room, it is not possible to verify all the welds (front/back, interior/exterior) for the control room panels. Welds that are seen are good, matching the drawings and other inputs without cracks, corrosion, etc. Cabinets were opened to perform verification.
6. Based on the above anchorage evaluations, is the anchorage free of potentially adverse seismic conditions? Yes

Status: Y N U

Seismic Walkdown Checklist (SWC)

Equipment ID No.: 2PM07J

Equipment Class: (20) Instrumentation and Control Panels and Cabinets

Equipment Description: MAIN CONTROL BOARD

Interaction Effects

7. Are soft targets free from impact by nearby equipment or structures? Yes
8. Are overhead equipment, distribution systems, ceiling tiles and lighting, and masonry block walls not likely to collapse onto the equipment?
see associated area walk-by Yes
9. Do attached lines have adequate flexibility to avoid damage? Yes
10. Based on the above seismic interaction evaluations, is equipment free of potentially adverse seismic interaction effects? Yes
-

Other Adverse Conditions

11. Have you looked for and found no adverse seismic conditions that could adversely affect the safety functions of the equipment? Yes
-

Comments

Seismic walkdown team M. Delaney & P. Gazda 7/31/12 am

Status: Y N U

Seismic Walkdown Checklist (SWC)

Equipment ID No.: 2PM07J

Equipment Class: (20) Instrumentation and Control Panels and Cabinets

Equipment Description: MAIN CONTROL BOARD

Marlene M Delaney

Evaluated by:

Marlene Delaney

Date: 10/1/2012

P. O. Gazda

Philip Gazda

10/1/2012

Photos



2PM07J 7-31-12 050

Status: Y N U

Seismic Walkdown Checklist (SWC)

Equipment ID No.: 2PM11J

Equipment Class: (20) Instrumentation and Control Panels and Cabinets

Equipment Description: MAIN CONTROL BOARD

Project: Braidwood 2 SWEL

Location (Bldg, Elev, Room/Area): Auxiliary, 451.00 ft, ALL

Manufacturer/Model:

Instructions for Completing Checklist

This checklist may be used to document the results of the Seismic Walkdown of an item of equipment on the SWEL. The space below each of the following questions may be used to record the results of judgments and findings. Additional space is provided at the end of this checklist for documenting other comments.

Anchorage

1. Is anchorage configuration verification required (i.e., is the item one of the 50% of SWEL items requiring such verification)? No

2. Is the anchorage free of bent, broken, missing or loose hardware? Yes

3. Is the anchorage free of corrosion that is more than mild surface oxidation? Yes

4. Is the anchorage free of visible cracks in the concrete near the anchors? Yes

5. Is the anchorage configuration consistent with plant documentation? (Note: This question only applies if the item is one of the 50% for which an anchorage configuration verification is required.) Not Applicable

6. Based on the above anchorage evaluations, is the anchorage free of potentially adverse seismic conditions? Yes

Status: Y N U

Seismic Walkdown Checklist (SWC)

Equipment ID No.: 2PM11J

Equipment Class: (20) Instrumentation and Control Panels and Cabinets

Equipment Description: MAIN CONTROL BOARD

Interaction Effects

7. Are soft targets free from impact by nearby equipment or structures? Yes
8. Are overhead equipment, distribution systems, ceiling tiles and lighting, and masonry block walls not likely to collapse onto the equipment?
see associated area walk-by Yes
9. Do attached lines have adequate flexibility to avoid damage? Yes
10. Based on the above seismic interaction evaluations, is equipment free of potentially adverse seismic interaction effects? Yes

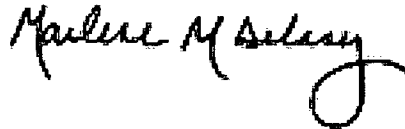
Other Adverse Conditions

11. Have you looked for and found no adverse seismic conditions that could adversely affect the safety functions of the equipment? Yes

Comments

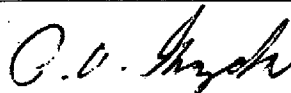
Seismic walkdown team M. Delaney & P. Gazda 7/31/12 am

Evaluated by:



Marlene Delaney

Date: 10/1/2012



Philip Gazda

10/1/2012

Status: Y N U

Seismic Walkdown Checklist (SWC)

Equipment ID No.: 2PM11J

Equipment Class: (20) Instrumentation and Control Panels and Cabinets

Equipment Description: MAIN CONTROL BOARD

Photos



2PM11J 7-31-12 051

Status: Y N U

Seismic Walkdown Checklist (SWC)

Equipment ID No.: 2PT-0514

Equipment Class: (18) Instruments on Racks

Equipment Description: STM GEN LOOP 2A STEAM PRESS PR

Project: Braidwood 2 SWEL

Location (Bldg, Elev, Room/Area): Auxiliary, 377.00 ft, ALL

Manufacturer/Model:

Instructions for Completing Checklist

This checklist may be used to document the results of the Seismic Walkdown of an item of equipment on the SWEL. The space below each of the following questions may be used to record the results of judgments and findings. Additional space is provided at the end of this checklist for documenting other comments.

Anchorage

1. Is anchorage configuration verification required (i.e., is the item one of the 50% of SWEL items requiring such verification)? No

2. Is the anchorage free of bent, broken, missing or loose hardware? Not Applicable

3. Is the anchorage free of corrosion that is more than mild surface oxidation? Not Applicable

4. Is the anchorage free of visible cracks in the concrete near the anchors? Not Applicable

5. Is the anchorage configuration consistent with plant documentation? (Note: This question only applies if the item is one of the 50% for which an anchorage configuration verification is required.) Not Applicable

6. Based on the above anchorage evaluations, is the anchorage free of potentially adverse seismic conditions? Yes
Well-mounted on rack that is anchored with large anchors

Status: Y N U

Seismic Walkdown Checklist (SWC)

Equipment ID No.: 2PT-0514

Equipment Class: (18) Instruments on Racks

Equipment Description: STM GEN LOOP 2A STEAM PRESS PR

Interaction Effects

7. Are soft targets free from impact by nearby equipment or structures? Yes
8. Are overhead equipment, distribution systems, ceiling tiles and lighting, and masonry block walls not likely to collapse onto the equipment? Yes
9. Do attached lines have adequate flexibility to avoid damage? Yes
10. Based on the above seismic interaction evaluations, is equipment free of potentially adverse seismic interaction effects? Yes

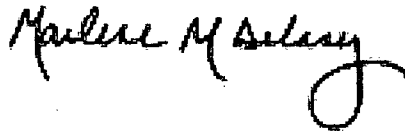
Other Adverse Conditions

11. Have you looked for and found no adverse seismic conditions that could adversely affect the safety functions of the equipment? Yes

Comments

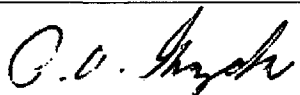
Seismic walkdown team M. Delaney & P. Gazda 8/1/12 am

Evaluated by:



Marlene Delaney

Date: 10/1/2012



Philip Gazda

10/1/2012

Status: Y N U

Seismic Walkdown Checklist (SWC)

Equipment ID No.: 2PT-0514

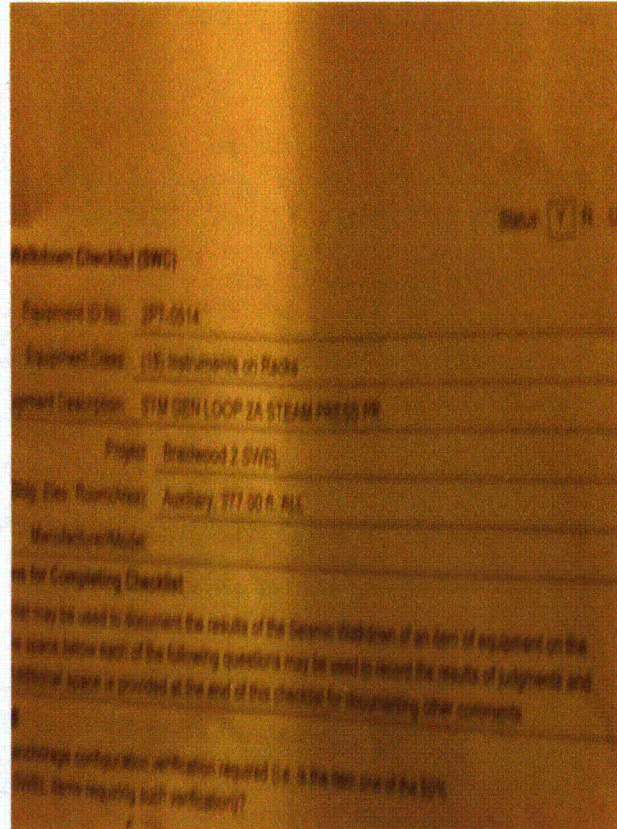
Equipment Class: (18) Instruments on Racks

Equipment Description: STM GEN LOOP 2A STEAM PRESS PR

Photos



2PT-0514 (AWB) 8-1-12 AM 017



2PT-0514 8-1-12 AM 015

Status: Y N U

Seismic Walkdown Checklist (SWC)

Equipment ID No.: 2PT-0514

Equipment Class: (18) Instruments on Racks

Equipment Description: STM GEN LOOP 2A STEAM PRESS PR



2PT-0514 8-1-12 AM 016

Status: Y N U

Seismic Walkdown Checklist (SWC)

Equipment ID No.: 2PT-0546

Equipment Class: (18) Instruments on Racks

Equipment Description: STM GEN LOOP 2D STEAM PRESS PR

Project: Braidwood 2 SWEL

Location (Bldg, Elev, Room/Area): Auxiliary, 377.00 ft, ALL

Manufacturer/Model:

Instructions for Completing Checklist

This checklist may be used to document the results of the Seismic Walkdown of an item of equipment on the SWEL. The space below each of the following questions may be used to record the results of judgments and findings. Additional space is provided at the end of this checklist for documenting other comments.

Anchorage

1. Is anchorage configuration verification required (i.e., is the item one of the 50% of SWEL items requiring such verification)? No

2. Is the anchorage free of bent, broken, missing or loose hardware? Not Applicable

3. Is the anchorage free of corrosion that is more than mild surface oxidation? Not Applicable

4. Is the anchorage free of visible cracks in the concrete near the anchors? Not Applicable

5. Is the anchorage configuration consistent with plant documentation? (Note: This question only applies if the item is one of the 50% for which an anchorage configuration verification is required.) Not Applicable

6. Based on the above anchorage evaluations, is the anchorage free of potentially adverse seismic conditions? Yes
Well mounted on rack
Rack is welded to embed plate

Status: Y N U

Seismic Walkdown Checklist (SWC)

Equipment ID No.: 2PT-0546

Equipment Class: (18) Instruments on Racks

Equipment Description: STM GEN LOOP 2D STEAM PRESS PR

Interaction Effects

7. Are soft targets free from impact by nearby equipment or structures? Yes
8. Are overhead equipment, distribution systems, ceiling tiles and lighting, and masonry block walls not likely to collapse onto the equipment? Yes
9. Do attached lines have adequate flexibility to avoid damage? Yes
10. Based on the above seismic interaction evaluations, is equipment free of potentially adverse seismic interaction effects? Yes

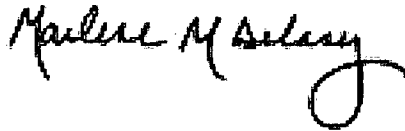
Other Adverse Conditions

11. Have you looked for and found no adverse seismic conditions that could adversely affect the safety functions of the equipment? Yes

Comments

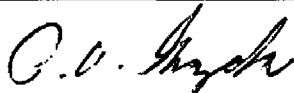
Seismic walkdown team M. Delaney & P. Gazda 8/1/12 am

Evaluated by:



Marlene Delaney

Date: 10/1/2012



Philip Gazda

10/1/2012

Status: Y N U

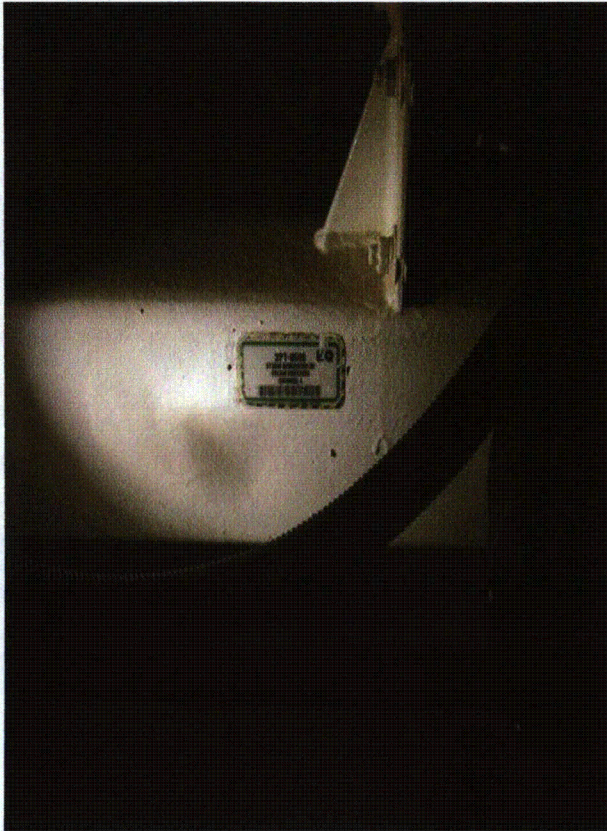
Seismic Walkdown Checklist (SWC)

Equipment ID No.: 2PT-0546

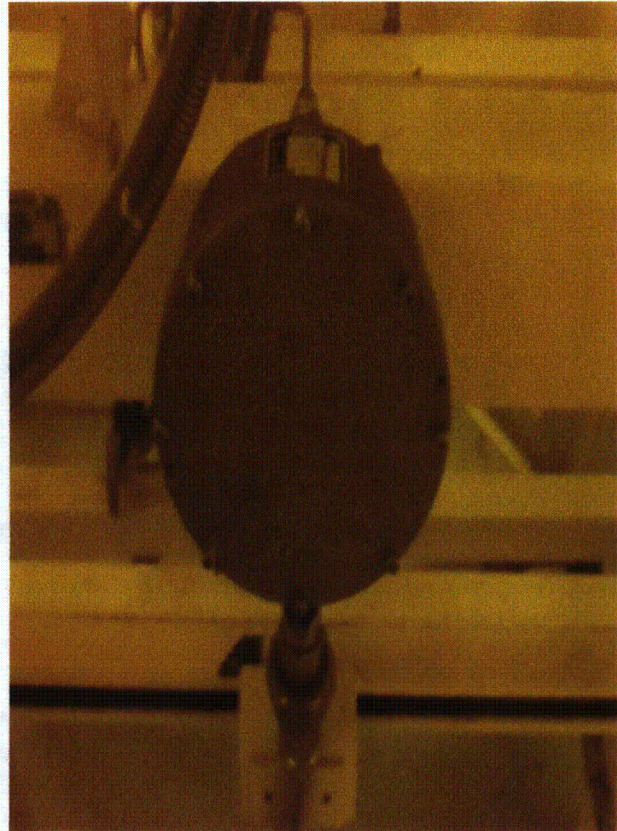
Equipment Class: (18) Instruments on Racks

Equipment Description: STM GEN LOOP 2D STEAM PRESS PR

Photos



2PT-0546 8-1-12 AM 013



2PT-0546 8-1-12 AM 014

Status: Y N U

Seismic Walkdown Checklist (SWC)

Equipment ID No.: 2PT-0935

Equipment Class: (18) Instruments on Racks

Equipment Description: CNMT PRESS XMTR

Project: Braidwood 2 SWEL

Location (Bldg, Elev, Room/Area): Auxiliary, 451.00 ft, ALL

Manufacturer/Model:

Instructions for Completing Checklist

This checklist may be used to document the results of the Seismic Walkdown of an item of equipment on the SWEL. The space below each of the following questions may be used to record the results of judgments and findings. Additional space is provided at the end of this checklist for documenting other comments.

Anchorage

1. Is anchorage configuration verification required (i.e., is the item one of the 50% of SWEL items requiring such verification)? No

2. Is the anchorage free of bent, broken, missing or loose hardware? Not Applicable

3. Is the anchorage free of corrosion that is more than mild surface oxidation? Not Applicable

4. Is the anchorage free of visible cracks in the concrete near the anchors? Not Applicable

5. Is the anchorage configuration consistent with plant documentation? (Note: This question only applies if the item is one of the 50% for which an anchorage configuration verification is required.) Not Applicable

6. Based on the above anchorage evaluations, is the anchorage free of potentially adverse seismic conditions? Yes
Instrument mounted on rack that is welded to embed plate

Status: Y N U

Seismic Walkdown Checklist (SWC)

Equipment ID No.: 2PT-0935

Equipment Class: (18) Instruments on Racks

Equipment Description: CNMT PRESS XMTTR

Interaction Effects

7. Are soft targets free from impact by nearby equipment or structures? Yes
8. Are overhead equipment, distribution systems, ceiling tiles and lighting, and masonry block walls not likely to collapse onto the equipment? Yes
9. Do attached lines have adequate flexibility to avoid damage? Yes
10. Based on the above seismic interaction evaluations, is equipment free of potentially adverse seismic interaction effects? Yes

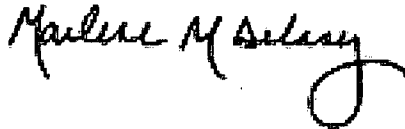
Other Adverse Conditions

11. Have you looked for and found no adverse seismic conditions that could adversely affect the safety functions of the equipment? Yes

Comments

Seismic walkdown team M. Delaney & P. Gazda 8/2/12 am

Evaluated by:



Marlene Delaney

Date: 10/1/2012



Philip Gazda

10/1/2012

Status: Y N U

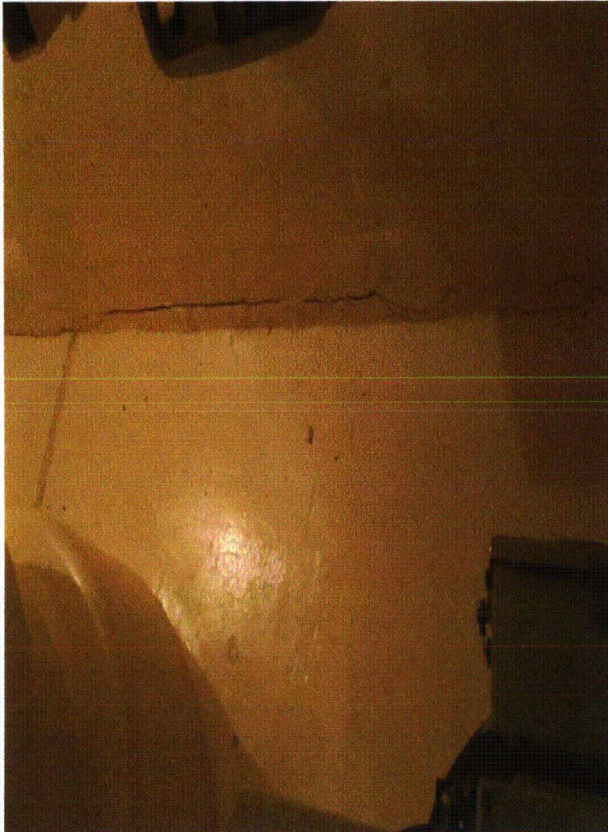
Seismic Walkdown Checklist (SWC)

Equipment ID No.: 2PT-0935

Equipment Class: (18) Instruments on Racks

Equipment Description: CNMT PRESS XMTR

Photos



2PT-0935 (NP-6695) 8-2-12 026



2PT-0935 (NP-6695) 8-2-12 027

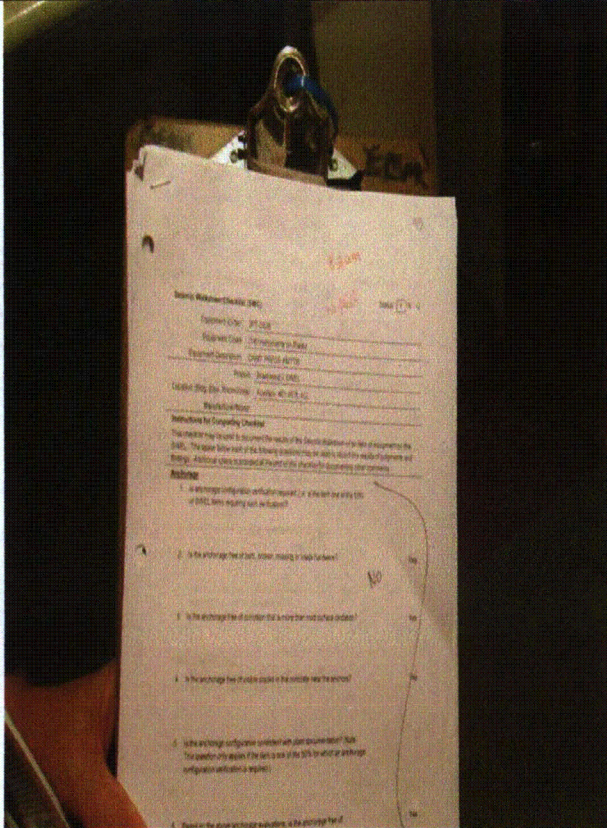
Status: Y N U

Seismic Walkdown Checklist (SWC)

Equipment ID No.: 2PT-0935

Equipment Class: (18) Instruments on Racks

Equipment Description: CNMT PRESS XMTR



2PT-0935 8-2-12 024



2PT-0935 8-2-12 025

Status: Y N U

Seismic Walkdown Checklist (SWC)

Equipment ID No.: 2RH01PA

Equipment Class: (6) Vertical Pumps

Equipment Description: PUMP,2A RESIDUAL HEAT REMOVAL ASMBLY

Project: Braidwood 2 SWEL

Location (Bldg, Elev, Room/Area): Auxiliary, 346.00 ft, ALL

Manufacturer/Model:

Instructions for Completing Checklist

This checklist may be used to document the results of the Seismic Walkdown of an item of equipment on the SWEL. The space below each of the following questions may be used to record the results of judgments and findings. Additional space is provided at the end of this checklist for documenting other comments.

Anchorage

1. Is anchorage configuration verification required (i.e., is the item one of the 50% of SWEL items requiring such verification)? Yes

2. Is the anchorage free of bent, broken, missing or loose hardware? Yes

3. Is the anchorage free of corrosion that is more than mild surface oxidation? Yes

4. Is the anchorage free of visible cracks in the concrete near the anchors? Yes

5. Is the anchorage configuration consistent with plant documentation? (Note: This question only applies if the item is one of the 50% for which an anchorage configuration verification is required.)
Drawing M-1219 Sheet 2 Revision Y
Equipment is contaminated so anchor diameter not measured but visual verification performed Yes

6. Based on the above anchorage evaluations, is the anchorage free of potentially adverse seismic conditions? Yes

Status: Y N U

Seismic Walkdown Checklist (SWC)

Equipment ID No.: 2RH01PA

Equipment Class: (6) Vertical Pumps

Equipment Description: PUMP,2A RESIDUAL HEAT REMOVAL ASMBLY

Interaction Effects

7. Are soft targets free from impact by nearby equipment or structures? Yes
8. Are overhead equipment, distribution systems, ceiling tiles and lighting, and masonry block walls not likely to collapse onto the equipment? Yes
9. Do attached lines have adequate flexibility to avoid damage? Yes
10. Based on the above seismic interaction evaluations, is equipment free of potentially adverse seismic interaction effects? Yes

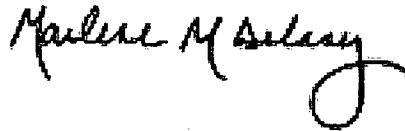
Other Adverse Conditions

11. Have you looked for and found no adverse seismic conditions that could adversely affect the safety functions of the equipment? Yes

Comments

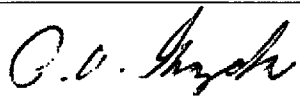
Seismic walkdown team M. Delaney & P. Gazda 7/30/12 am

Evaluated by:



Marlene Delaney

Date: 10/1/2012



Philip Gazda

10/1/2012

Status: Y N U

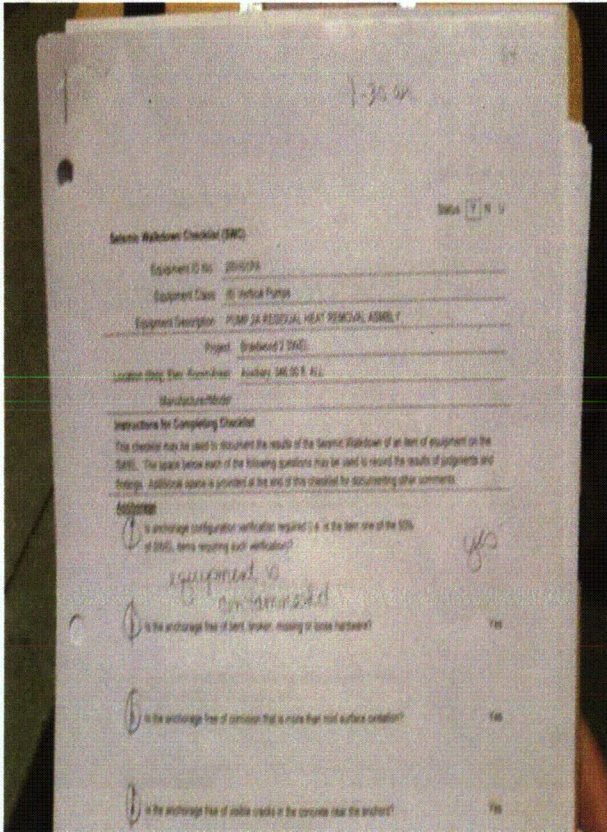
Seismic Walkdown Checklist (SWC)

Equipment ID No.: 2RH01PA

Equipment Class: (6) Vertical Pumps

Equipment Description: PUMP,2A RESIDUAL HEAT REMOVAL ASMBLY

Photos



2RH01PA 7-30-12 AM 032



2RH01PA 7-30-12 AM 033

Status: Y N U

Seismic Walkdown Checklist (SWC)

Equipment ID No.: 2RH01PA

Equipment Class: (6) Vertical Pumps

Equipment Description: PUMP,2A RESIDUAL HEAT REMOVAL ASMBLY



2RH01PA 7-30-12 AM 034



2RH01PA 7-30-12 AM 035

Status: Y N U

Seismic Walkdown Checklist (SWC)

Equipment ID No.: 2RH01PA

Equipment Class: (6) Vertical Pumps

Equipment Description: PUMP,2A RESIDUAL HEAT REMOVAL ASMBLY



2RH01PA 7-30-12 AM 036

Status: Y N U

Seismic Walkdown Checklist (SWC)

Equipment ID No.: 2RH01PA-A

Equipment Class: (21) Tanks and Heat Exchangers

Equipment Description: RH PUMP 2A SEAL COOLER

Project: Braidwood 2 SWEL

Location (Bldg, Elev, Room/Area): Auxiliary, 346.00 ft, ALL

Manufacturer/Model:

Instructions for Completing Checklist

This checklist may be used to document the results of the Seismic Walkdown of an item of equipment on the SWEL. The space below each of the following questions may be used to record the results of judgments and findings. Additional space is provided at the end of this checklist for documenting other comments.

Anchorage

1. Is anchorage configuration verification required (i.e., is the item one of the 50% of SWEL items requiring such verification)? No
Mounted to skid. Well-anchored.

2. Is the anchorage free of bent, broken, missing or loose hardware? Not Applicable

3. Is the anchorage free of corrosion that is more than mild surface oxidation? Not Applicable

4. Is the anchorage free of visible cracks in the concrete near the anchors? Not Applicable

5. Is the anchorage configuration consistent with plant documentation? (Note: This question only applies if the item is one of the 50% for which an anchorage configuration verification is required.) Not Applicable

6. Based on the above anchorage evaluations, is the anchorage free of potentially adverse seismic conditions? Yes

Status: Y N U

Seismic Walkdown Checklist (SWC)

Equipment ID No.: 2RH01PA-A

Equipment Class: (21) Tanks and Heat Exchangers

Equipment Description: RH PUMP 2A SEAL COOLER

Interaction Effects

7. Are soft targets free from impact by nearby equipment or structures? Yes
8. Are overhead equipment, distribution systems, ceiling tiles and lighting, and masonry block walls not likely to collapse onto the equipment? Yes
9. Do attached lines have adequate flexibility to avoid damage? Yes
10. Based on the above seismic interaction evaluations, is equipment free of potentially adverse seismic interaction effects? Yes

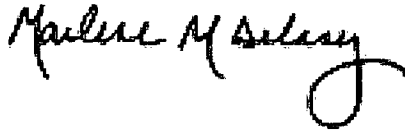
Other Adverse Conditions

11. Have you looked for and found no adverse seismic conditions that could adversely affect the safety functions of the equipment? Yes

Comments

Seismic walkdown team M. Delaney & P. Gazda 7/30/12 am

Evaluated by:



Marlene Delaney

Date: 10/1/2012



Philip Gazda

10/1/2012

Status: Y N U

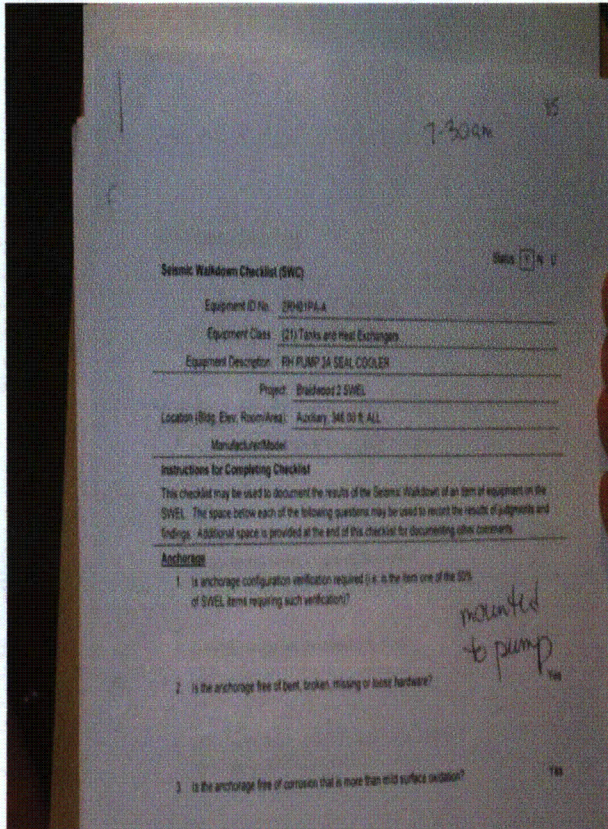
Seismic Walkdown Checklist (SWC)

Equipment ID No.: 2RH01PA-A

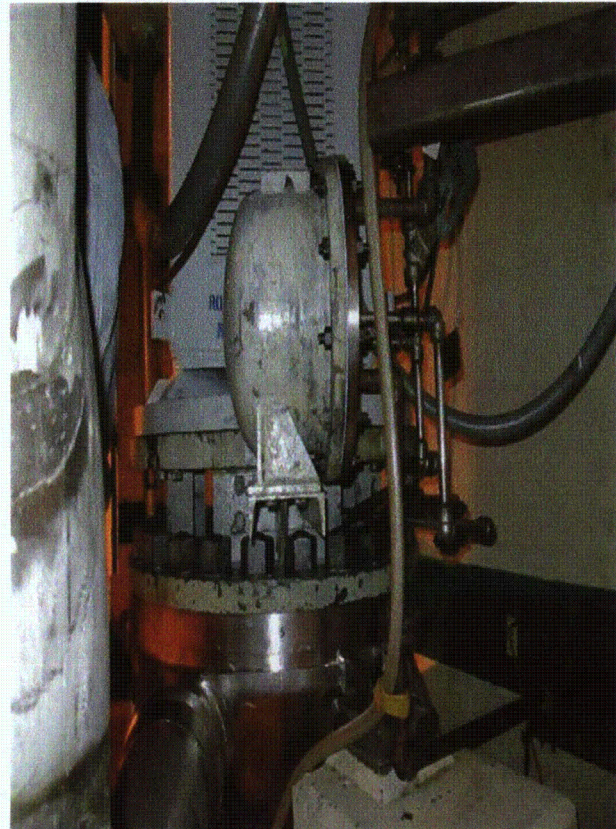
Equipment Class: (21) Tanks and Heat Exchangers

Equipment Description: RH PUMP 2A SEAL COOLER

Photos



2RH01PA-A 7-30-12 AM 030



2RH01PA-A 7-30-12 AM 031

Status: Y N U

Seismic Walkdown Checklist (SWC)

Equipment ID No.: 2RH610

Equipment Class: (8) Motor-Operated and Solenoid-Operated Valves

Equipment Description: RHR PUMP 2A MINFLOW VLV ASMBLY

Project: Braidwood 2 SWEL

Location (Bldg, Elev, Room/Area): Auxiliary, 357.00 ft, ALL

Manufacturer/Model:

Instructions for Completing Checklist

This checklist may be used to document the results of the Seismic Walkdown of an item of equipment on the SWEL. The space below each of the following questions may be used to record the results of judgments and findings. Additional space is provided at the end of this checklist for documenting other comments.

Anchorage

1. Is anchorage configuration verification required (i.e., is the item one of the 50% of SWEL items requiring such verification)? No

2. Is the anchorage free of bent, broken, missing or loose hardware? Not Applicable

3. Is the anchorage free of corrosion that is more than mild surface oxidation? Not Applicable

4. Is the anchorage free of visible cracks in the concrete near the anchors? Not Applicable

5. Is the anchorage configuration consistent with plant documentation? (Note: This question only applies if the item is one of the 50% for which an anchorage configuration verification is required.) Not Applicable

6. Based on the above anchorage evaluations, is the anchorage free of potentially adverse seismic conditions? Yes

Status: Y N U

Seismic Walkdown Checklist (SWC)

Equipment ID No.: 2RH610

Equipment Class: (8) Motor-Operated and Solenoid-Operated Valves

Equipment Description: RHR PUMP 2A MINFLOW VLV ASMBLY

Interaction Effects

7. Are soft targets free from impact by nearby equipment or structures? Yes
8. Are overhead equipment, distribution systems, ceiling tiles and lighting, and masonry block walls not likely to collapse onto the equipment? Yes
Nearby block walls are seismic.
Nearby scaffolding is laterally supported with stand-offs on 3 walls. Cannot damage equipment if it were to move in the free direction.
9. Do attached lines have adequate flexibility to avoid damage? Yes
10. Based on the above seismic interaction evaluations, is equipment free of potentially adverse seismic interaction effects? Yes

Other Adverse Conditions

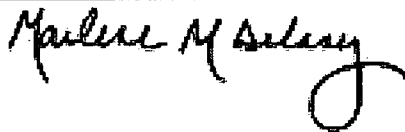
11. Have you looked for and found no adverse seismic conditions that could adversely affect the safety functions of the equipment? Yes
Valve is a MOV and is robust.

Comments

Seismic walkdown team M. Delaney & P. Gazda 7/30/12 am

Valve class changed from fluid operated valve as indicated on SWEL.

Evaluated by:



Marlene Delaney

Date: 10/1/2012



Philip Gazda

10/1/2012

Status: Y N U

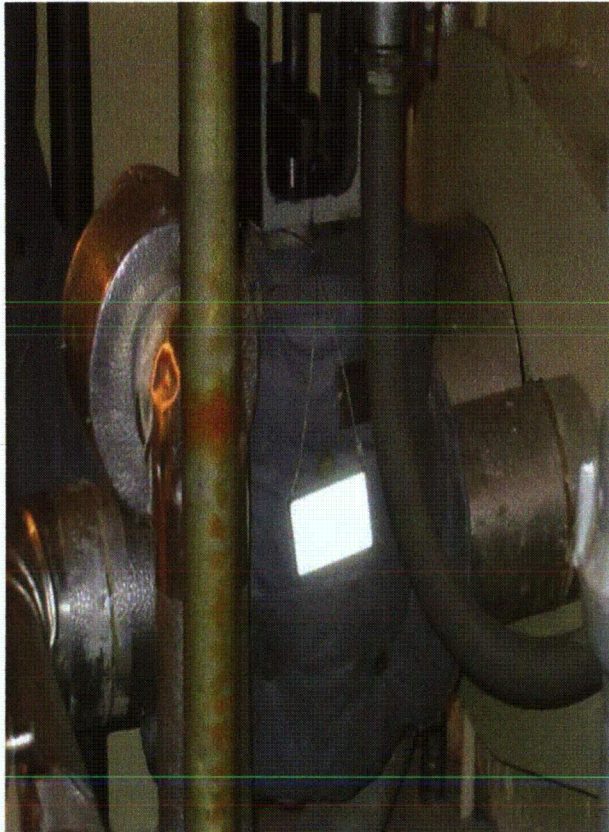
Seismic Walkdown Checklist (SWC)

Equipment ID No.: 2RH610

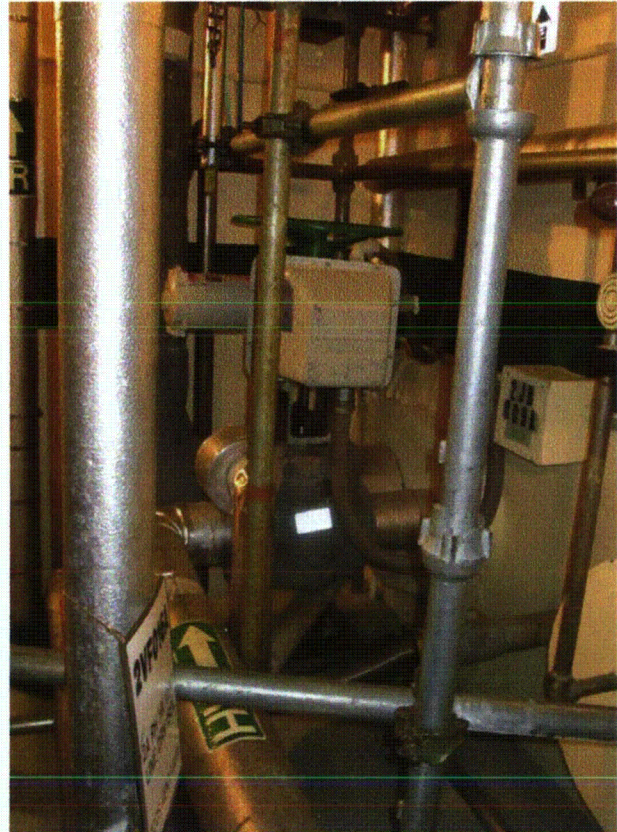
Equipment Class: (8) Motor-Operated and Solenoid-Operated Valves

Equipment Description: RHR PUMP 2A MINFLOW VLV ASMBLY

Photos



2RH610 7-30-12 AM 018



2RH610 7-30-12 AM 019

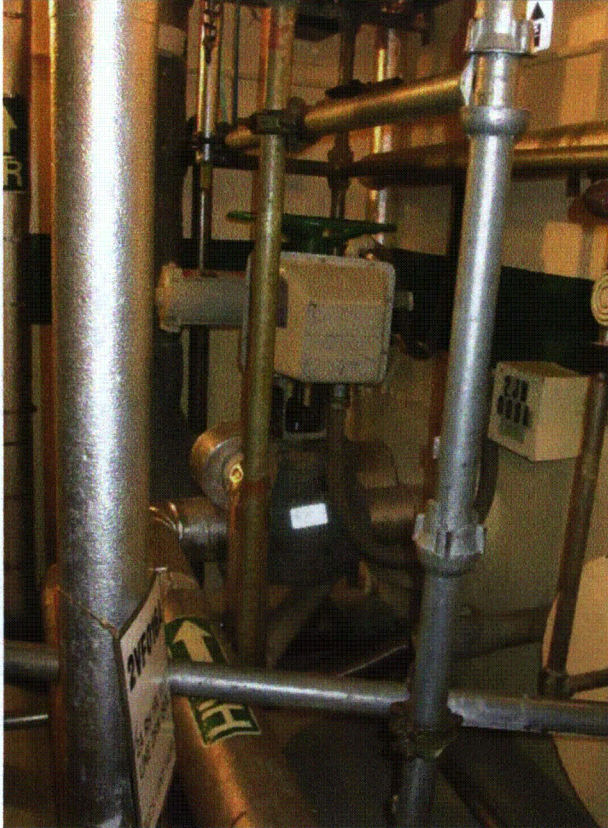
Status: Y N U

Seismic Walkdown Checklist (SWC)

Equipment ID No.: 2RH610

Equipment Class: (8) Motor-Operated and Solenoid-Operated Valves

Equipment Description: RHR PUMP 2A MINFLOW VLV ASMBLY



2RH610 8-2-12 002

Status: Y N U

Seismic Walkdown Checklist (SWC)

Equipment ID No.: 2RH8716B

Equipment Class: (8) Motor-Operated and Solenoid-Operated Valves

Equipment Description: RH HX 2B DISCH CROSSTIE VLV ASMBLY

Project: Braidwood 2 SWEL

Location (Bldg, Elev, Room/Area): Auxiliary, 364.00 ft, ALL

Manufacturer/Model:

Instructions for Completing Checklist

This checklist may be used to document the results of the Seismic Walkdown of an item of equipment on the SWEL. The space below each of the following questions may be used to record the results of judgments and findings. Additional space is provided at the end of this checklist for documenting other comments.

Anchorage

1. Is anchorage configuration verification required (i.e., is the item one of the 50% of SWEL items requiring such verification)? No

2. Is the anchorage free of bent, broken, missing or loose hardware? Not Applicable

3. Is the anchorage free of corrosion that is more than mild surface oxidation? Not Applicable

4. Is the anchorage free of visible cracks in the concrete near the anchors? Not Applicable

5. Is the anchorage configuration consistent with plant documentation? (Note: This question only applies if the item is one of the 50% for which an anchorage configuration verification is required.) Not Applicable

6. Based on the above anchorage evaluations, is the anchorage free of potentially adverse seismic conditions? Yes

Status: Y N U

Seismic Walkdown Checklist (SWC)

Equipment ID No.: 2RH8716B

Equipment Class: (8) Motor-Operated and Solenoid-Operated Valves

Equipment Description: RH HX 2B DISCH CROSSTIE VLV ASMBLY

Interaction Effects

7. Are soft targets free from impact by nearby equipment or structures? Yes
8. Are overhead equipment, distribution systems, ceiling tiles and lighting, and masonry block walls not likely to collapse onto the equipment? Yes
9. Do attached lines have adequate flexibility to avoid damage? Yes
10. Based on the above seismic interaction evaluations, is equipment free of potentially adverse seismic interaction effects? Yes

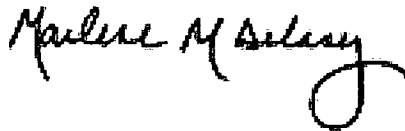
Other Adverse Conditions

11. Have you looked for and found no adverse seismic conditions that could adversely affect the safety functions of the equipment? Yes
Well-supported valve

Comments

Seismic walkdown team M. Delaney & P. Gazda 7/30/12 am

Evaluated by:



Marlene Delaney

Date: 10/1/2012



Philip Gazda

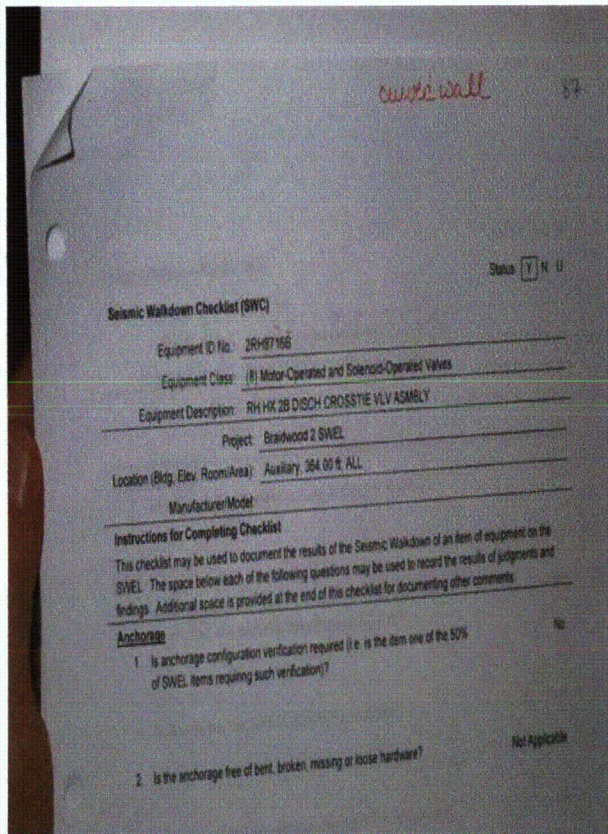
10/1/2012

Status: Y N U

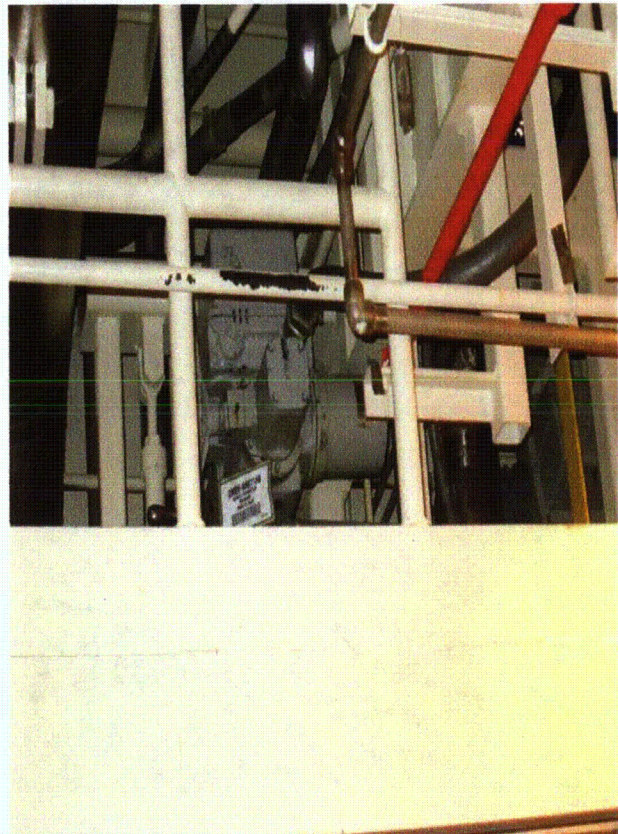
Seismic Walkdown Checklist (SWC)

Equipment ID No.: 2RH8716B
Equipment Class: (8) Motor-Operated and Solenoid-Operated Valves
Equipment Description: RH HX 2B DISCH CROSSTIE VLV ASMBLY

Photos



2RH8716B 7-30-12 AM 043



2RH8716B 7-30-12 AM 044

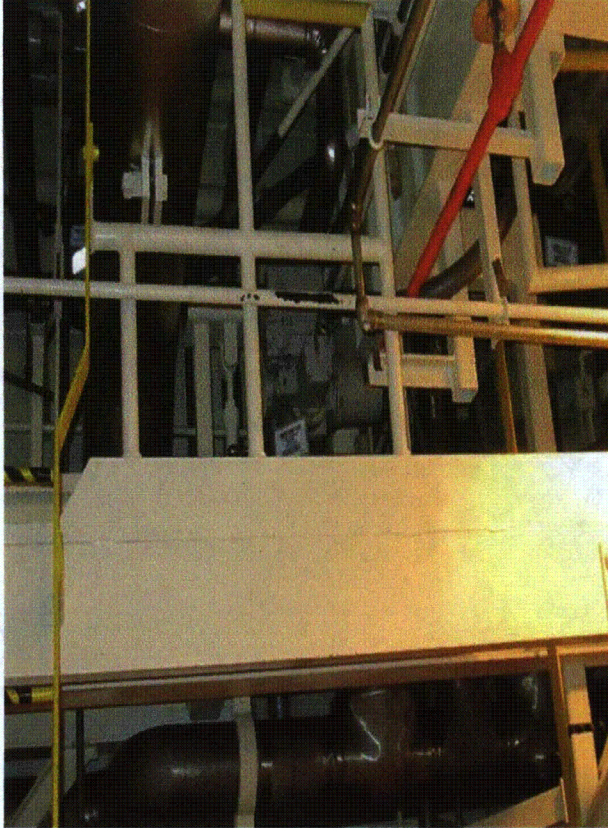
Status: Y N U

Seismic Walkdown Checklist (SWC)

Equipment ID No.: 2RH8716B

Equipment Class: (8) Motor-Operated and Solenoid-Operated Valves

Equipment Description: RH HX 2B DISCH CROSSTIE VLV ASMBLY



2RH8716B 7-30-12 AM 045

Status: Y N U

Seismic Walkdown Checklist (SWC)

Equipment ID No.: 2SI8801A

Equipment Class: (7) Fluid-Operated Valves

Equipment Description: CHG PUMP TO COLD LEG INJ ISOL ASMBLY

Project: Braidwood 2 SWEL

Location (Bldg, Elev, Room/Area): Auxiliary, 375.00 ft, ALL

Manufacturer/Model:

Instructions for Completing Checklist

This checklist may be used to document the results of the Seismic Walkdown of an item of equipment on the SWEL. The space below each of the following questions may be used to record the results of judgments and findings. Additional space is provided at the end of this checklist for documenting other comments.

Anchorage

1. Is anchorage configuration verification required (i.e., is the item one of the 50% of SWEL items requiring such verification)? No

2. Is the anchorage free of bent, broken, missing or loose hardware? Not Applicable

3. Is the anchorage free of corrosion that is more than mild surface oxidation? Not Applicable

4. Is the anchorage free of visible cracks in the concrete near the anchors? Not Applicable

5. Is the anchorage configuration consistent with plant documentation? (Note: This question only applies if the item is one of the 50% for which an anchorage configuration verification is required.) Not Applicable

6. Based on the above anchorage evaluations, is the anchorage free of potentially adverse seismic conditions? Yes

Status: Y N U

Seismic Walkdown Checklist (SWC)

Equipment ID No.: 2SI8801A

Equipment Class: (7) Fluid-Operated Valves

Equipment Description: CHG PUMP TO COLD LEG INJ ISOL ASMBLY

Interaction Effects

7. Are soft targets free from impact by nearby equipment or structures? Yes
8. Are overhead equipment, distribution systems, ceiling tiles and lighting, and masonry block walls not likely to collapse onto the equipment? Yes
Gallery above is well-supported
9. Do attached lines have adequate flexibility to avoid damage? Yes
10. Based on the above seismic interaction evaluations, is equipment free of potentially adverse seismic interaction effects? Yes

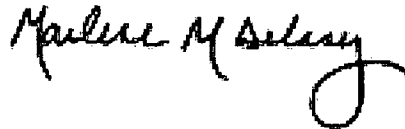
Other Adverse Conditions

11. Have you looked for and found no adverse seismic conditions that could adversely affect the safety functions of the equipment? Yes

Comments

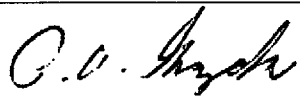
Seismic walkdown team M. Delaney & P. Gazda 8/2/12 am

Evaluated by:



Marlene Delaney

Date: 10/1/2012



Philip Gazda

10/1/2012

Status: Y N U

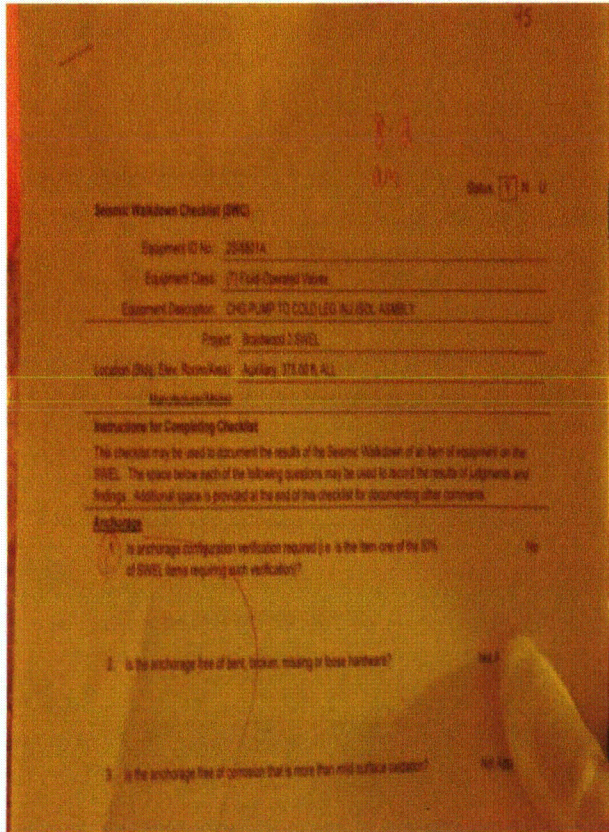
Seismic Walkdown Checklist (SWC)

Equipment ID No.: 2SI8801A

Equipment Class: (7) Fluid-Operated Valves

Equipment Description: CHG PUMP TO COLD LEG INJ ISOL ASMBLY

Photos



2SI8801A 8-2-12 015



2SI8801A 8-2-12 016

Status: Y N U

Seismic Walkdown Checklist (SWC)

Equipment ID No.: 2SI8801A

Equipment Class: (7) Fluid-Operated Valves

Equipment Description: CHG PUMP TO COLD LEG INJ ISOL ASMBLY



2SI8801A 8-2-12 017

Status: Y N U

Seismic Walkdown Checklist (SWC)

Equipment ID No.: 2SI8801B

Equipment Class: (7) Fluid-Operated Valves

Equipment Description: CHG PUMP TO COLD LEGS INST ISOL VLV ASMBLY

Project: Braidwood 2 SWEL

Location (Bldg, Elev, Room/Area): Auxiliary, 375.00 ft, ALL

Manufacturer/Model:

Instructions for Completing Checklist

This checklist may be used to document the results of the Seismic Walkdown of an item of equipment on the SWEL. The space below each of the following questions may be used to record the results of judgments and findings. Additional space is provided at the end of this checklist for documenting other comments.

Anchorage

1. Is anchorage configuration verification required (i.e., is the item one of the 50% of SWEL items requiring such verification)? No

2. Is the anchorage free of bent, broken, missing or loose hardware? Not Applicable

3. Is the anchorage free of corrosion that is more than mild surface oxidation? Not Applicable

4. Is the anchorage free of visible cracks in the concrete near the anchors? Not Applicable

5. Is the anchorage configuration consistent with plant documentation? (Note: This question only applies if the item is one of the 50% for which an anchorage configuration verification is required.) Not Applicable

6. Based on the above anchorage evaluations, is the anchorage free of potentially adverse seismic conditions? Yes

Status: Y N U

Seismic Walkdown Checklist (SWC)

Equipment ID No.: 2SI8801B

Equipment Class: (7) Fluid-Operated Valves

Equipment Description: CHG PUMP TO COLD LEGS INST ISOL VLV ASMBLY

Interaction Effects

7. Are soft targets free from impact by nearby equipment or structures? Yes
8. Are overhead equipment, distribution systems, ceiling tiles and lighting, and masonry block walls not likely to collapse onto the equipment? Yes
Overhead gallery is well-supported
9. Do attached lines have adequate flexibility to avoid damage? Yes
10. Based on the above seismic interaction evaluations, is equipment free of potentially adverse seismic interaction effects? Yes

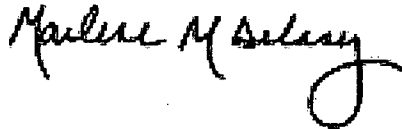
Other Adverse Conditions

11. Have you looked for and found no adverse seismic conditions that could adversely affect the safety functions of the equipment? Yes

Comments

Seismic walkdown team M. Delaney & P. Gazda 8/2/12 am

Evaluated by:



Marlene Delaney

Date: 10/1/2012



Philip Gazda

10/1/2012

Status: Y N U

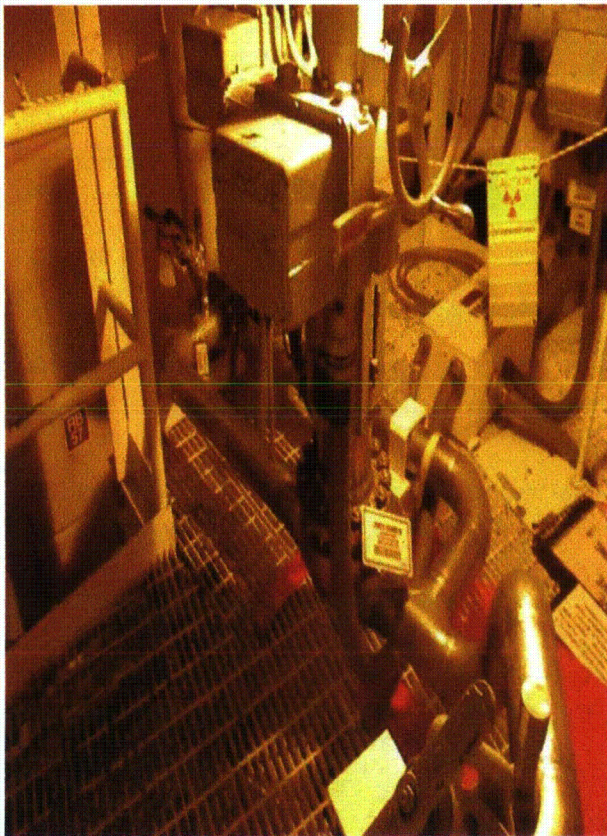
Seismic Walkdown Checklist (SWC)

Equipment ID No.: 2SI8801B

Equipment Class: (7) Fluid-Operated Valves

Equipment Description: CHG PUMP TO COLD LEGS INST ISOL VLV ASMBLY

Photos



2SI8801B 8-2-12 018



2SI8801B 8-2-12 019

Status: Y N U

Seismic Walkdown Checklist (SWC)

Equipment ID No.: 2SX004

Equipment Class: (8) Motor-Operated and Solenoid-Operated Valves

Equipment Description: CC HX 2 INLT VLV ASMBLY

Project: Braidwood 2 SWEL

Location (Bldg, Elev, Room/Area): Auxiliary, 330.00 ft, ALL

Manufacturer/Model:

Instructions for Completing Checklist

This checklist may be used to document the results of the Seismic Walkdown of an item of equipment on the SWEL. The space below each of the following questions may be used to record the results of judgments and findings. Additional space is provided at the end of this checklist for documenting other comments.

Anchorage

1. Is anchorage configuration verification required (i.e., is the item one of the 50% of SWEL items requiring such verification)? No

2. Is the anchorage free of bent, broken, missing or loose hardware? Not Applicable

3. Is the anchorage free of corrosion that is more than mild surface oxidation? Not Applicable

4. Is the anchorage free of visible cracks in the concrete near the anchors? Not Applicable

5. Is the anchorage configuration consistent with plant documentation? (Note: This question only applies if the item is one of the 50% for which an anchorage configuration verification is required.) Not Applicable

6. Based on the above anchorage evaluations, is the anchorage free of potentially adverse seismic conditions? Yes

Status: Y N U

Seismic Walkdown Checklist (SWC)

Equipment ID No.: 2SX004

Equipment Class: (8) Motor-Operated and Solenoid-Operated Valves

Equipment Description: CC HX 2 INLT VLV ASMBLY

Interaction Effects

7. Are soft targets free from impact by nearby equipment or structures? Yes
8. Are overhead equipment, distribution systems, ceiling tiles and lighting, and masonry block walls not likely to collapse onto the equipment? Yes
9. Do attached lines have adequate flexibility to avoid damage? Yes
10. Based on the above seismic interaction evaluations, is equipment free of potentially adverse seismic interaction effects? Yes

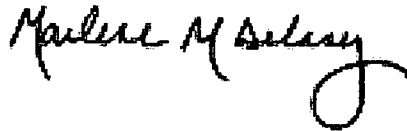
Other Adverse Conditions

11. Have you looked for and found no adverse seismic conditions that could adversely affect the safety functions of the equipment? Yes
Robust valve on well-supported pipe

Comments

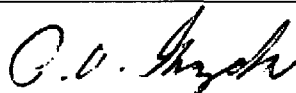
Seismic walkdown team M. Delaney & P. Gazda 8/1/12 pm

Evaluated by:



Marlene Delaney

Date: 10/1/2012



Philip Gazda

10/1/2012

Status: Y N U

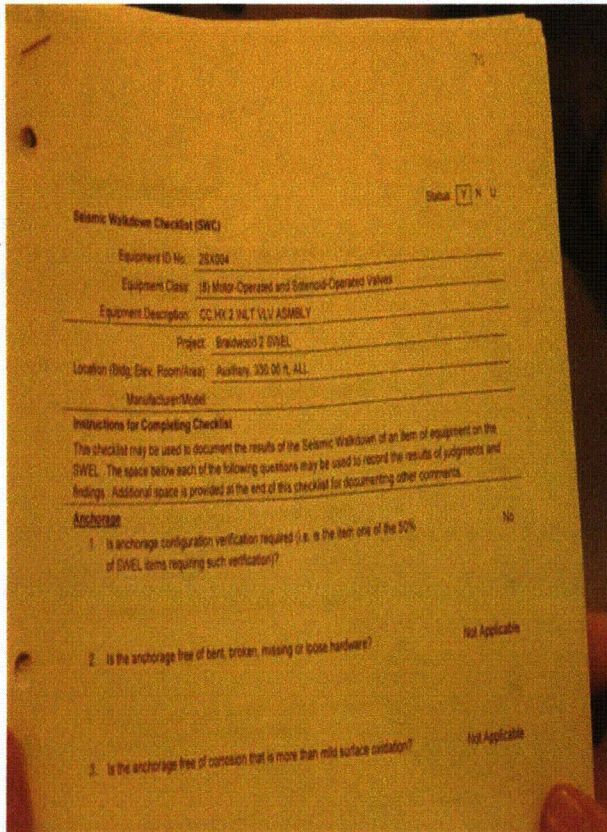
Seismic Walkdown Checklist (SWC)

Equipment ID No.: 2SX004

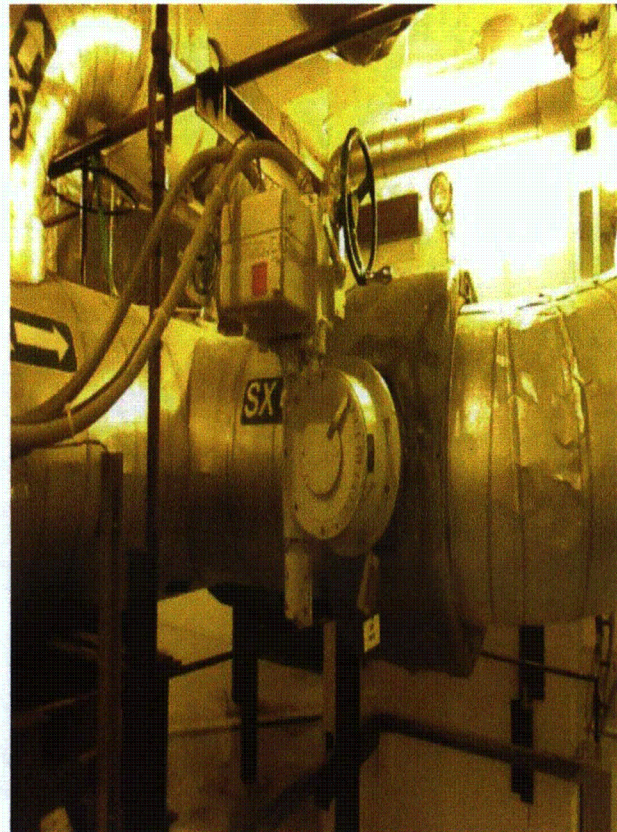
Equipment Class: (8) Motor-Operated and Solenoid-Operated Valves

Equipment Description: CC HX 2 INLT VLV ASMBLY

Photos



2SX004 8-1-12 PM 015



2SX004 8-1-12 PM 016

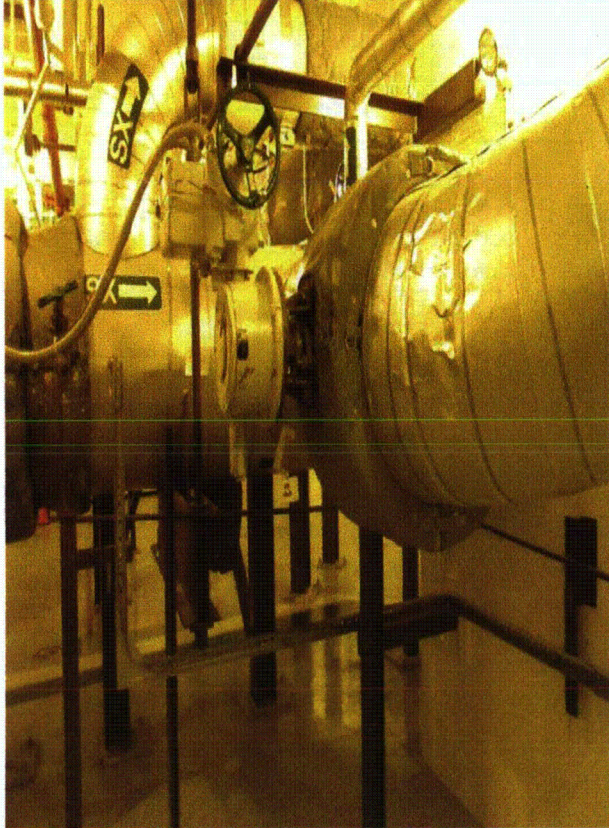
Status: Y N U

Seismic Walkdown Checklist (SWC)

Equipment ID No.: 2SX004

Equipment Class: (8) Motor-Operated and Solenoid-Operated Valves

Equipment Description: CC HX 2 INLT VLV ASMBLY



2SX004 8-1-12 PM 017

Status: Y N U

Seismic Walkdown Checklist (SWC)

Equipment ID No.: 2SX005

Equipment Class: (8) Motor-Operated and Solenoid-Operated Valves

Equipment Description: U-0 CC HX INLET VLV ASMBLY

Project: Braidwood 2 SWEL

Location (Bldg, Elev, Room/Area): Auxiliary, 330.00 ft, ALL

Manufacturer/Model:

Instructions for Completing Checklist

This checklist may be used to document the results of the Seismic Walkdown of an item of equipment on the SWEL. The space below each of the following questions may be used to record the results of judgments and findings. Additional space is provided at the end of this checklist for documenting other comments.

Anchorage

1. Is anchorage configuration verification required (i.e., is the item one of the 50% of SWEL items requiring such verification)? No

2. Is the anchorage free of bent, broken, missing or loose hardware? Not Applicable

3. Is the anchorage free of corrosion that is more than mild surface oxidation? Not Applicable

4. Is the anchorage free of visible cracks in the concrete near the anchors? Not Applicable

5. Is the anchorage configuration consistent with plant documentation? (Note: This question only applies if the item is one of the 50% for which an anchorage configuration verification is required.) Not Applicable

6. Based on the above anchorage evaluations, is the anchorage free of potentially adverse seismic conditions? Yes

Status: Y N U

Seismic Walkdown Checklist (SWC)

Equipment ID No.: 2SX005

Equipment Class: (8) Motor-Operated and Solenoid-Operated Valves

Equipment Description: U-0 CC HX INLET VLV ASMBLY

Interaction Effects

7. Are soft targets free from impact by nearby equipment or structures? Yes
8. Are overhead equipment, distribution systems, ceiling tiles and lighting, and masonry block walls not likely to collapse onto the equipment? Yes
9. Do attached lines have adequate flexibility to avoid damage? Yes
10. Based on the above seismic interaction evaluations, is equipment free of potentially adverse seismic interaction effects? Yes

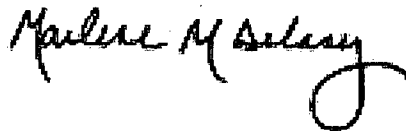
Other Adverse Conditions

11. Have you looked for and found no adverse seismic conditions that could adversely affect the safety functions of the equipment? Yes
Robust, well-supported valve

Comments

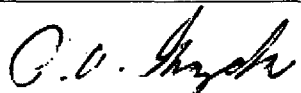
Seismic walkdown team M. Delaney & P. Gazda 8/1/12 pm

Evaluated by:



Marlene Delaney

Date: 10/1/2012



Philip Gazda

10/1/2012

Status: Y N U

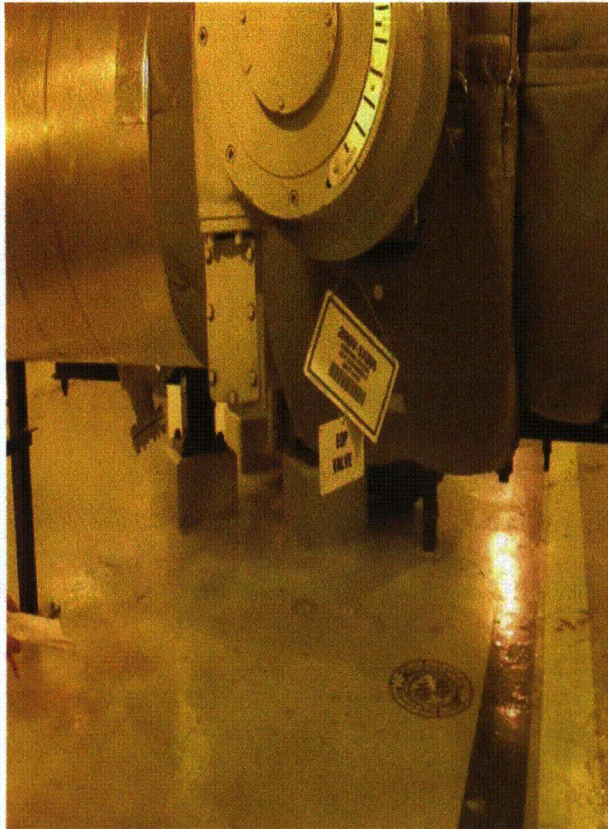
Seismic Walkdown Checklist (SWC)

Equipment ID No.: 2SX005

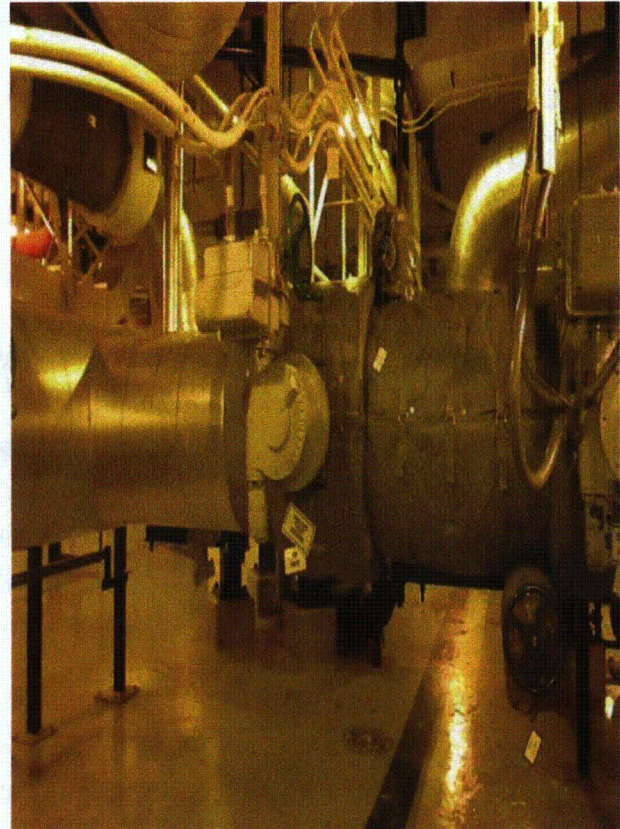
Equipment Class: (8) Motor-Operated and Solenoid-Operated Valves

Equipment Description: U-0 CC HX INLET VLV ASMBLY

Photos



2SX005 8-1-12 PM 021



2SX005 8-1-12 PM 022

Status: Y N U

Seismic Walkdown Checklist (SWC)

Equipment ID No.: 2SX01AA

Equipment Class: (21) Tanks and Heat Exchangers

Equipment Description: 2A SX PUMP LUBE OIL COOLER

Project: Braidwood 2 SWEL

Location (Bldg, Elev, Room/Area): Auxiliary, 330.00 ft, ALL

Manufacturer/Model:

Instructions for Completing Checklist

This checklist may be used to document the results of the Seismic Walkdown of an item of equipment on the SWEL. The space below each of the following questions may be used to record the results of judgments and findings. Additional space is provided at the end of this checklist for documenting other comments.

Anchorage

1. Is anchorage configuration verification required (i.e., is the item one of the 50% of SWEL items requiring such verification)? No

2. Is the anchorage free of bent, broken, missing or loose hardware? Not Applicable

3. Is the anchorage free of corrosion that is more than mild surface oxidation? Not Applicable

4. Is the anchorage free of visible cracks in the concrete near the anchors? Not Applicable

5. Is the anchorage configuration consistent with plant documentation? (Note: This question only applies if the item is one of the 50% for which an anchorage configuration verification is required.) Not Applicable

6. Based on the above anchorage evaluations, is the anchorage free of potentially adverse seismic conditions? Yes
Equipment is an in-line mounted cooler with no anchorage details.

Status: Y N U

Seismic Walkdown Checklist (SWC)

Equipment ID No.: 2SX01AA

Equipment Class: (21) Tanks and Heat Exchangers

Equipment Description: 2A SX PUMP LUBE OIL COOLER

Interaction Effects

7. Are soft targets free from impact by nearby equipment or structures? Yes
8. Are overhead equipment, distribution systems, ceiling tiles and lighting, and masonry block walls not likely to collapse onto the equipment? Yes
9. Do attached lines have adequate flexibility to avoid damage? Yes
10. Based on the above seismic interaction evaluations, is equipment free of potentially adverse seismic interaction effects? Yes

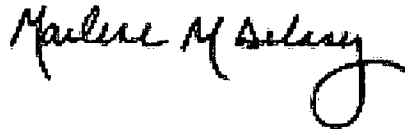
Other Adverse Conditions

11. Have you looked for and found no adverse seismic conditions that could adversely affect the safety functions of the equipment? Yes
Well-supported
IR written on component (tagged) but no impact to seismic safety functions

Comments

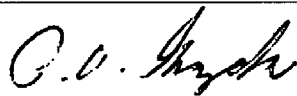
Seismic walkdown team M. Delaney & P. Gazda 8/1/12 pm

Evaluated by:



Marlene Delaney

Date: 10/1/2012



Philip Gazda

10/1/2012

Status: Y N U

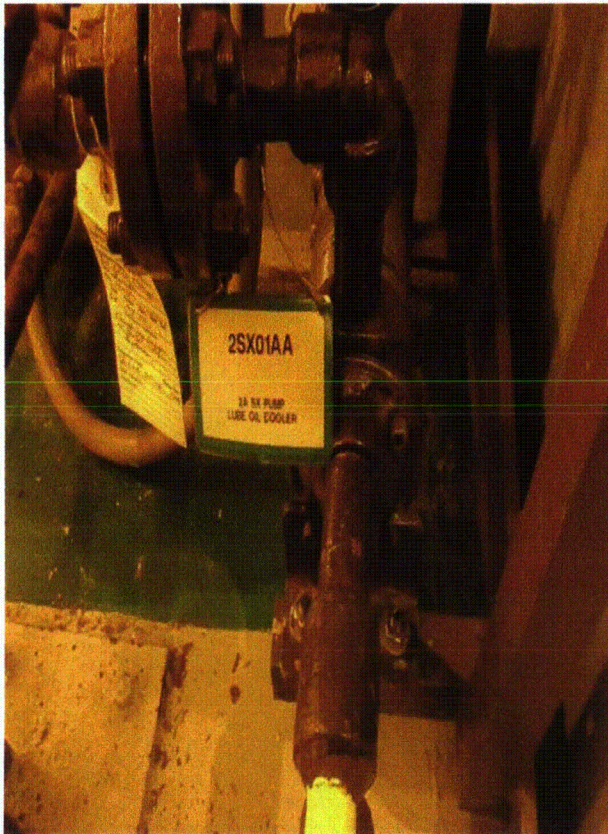
Seismic Walkdown Checklist (SWC)

Equipment ID No.: 2SX01AA

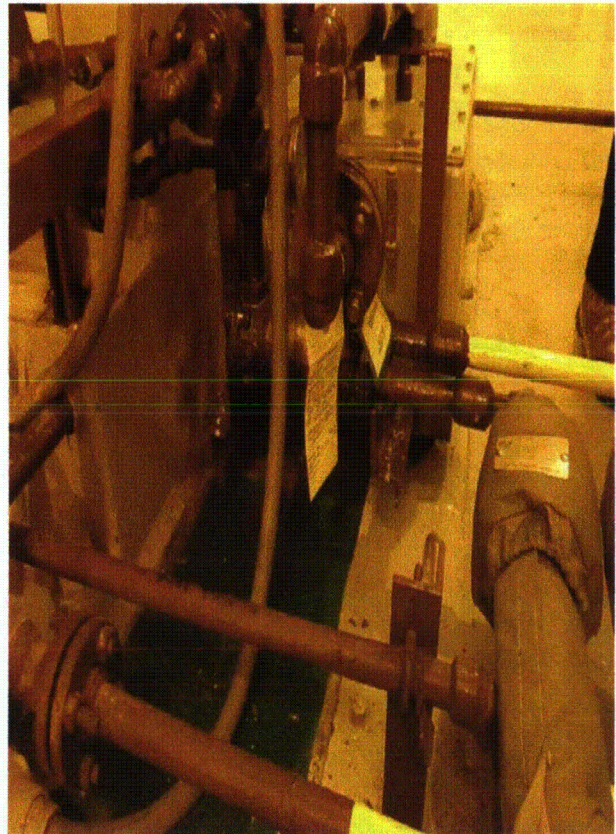
Equipment Class: (21) Tanks and Heat Exchangers

Equipment Description: 2A SX PUMP LUBE OIL COOLER

Photos



2SX01AA 8-1-12 PM 008



2SX01AA 8-1-12 PM 009

Status: Y N U

Seismic Walkdown Checklist (SWC)

Equipment ID No.: 2SX01PA

Equipment Class: (5) Horizontal Pumps

Equipment Description: PUMP, 2A ESSENTIAL SER WTR ASMBLY

Project: Braidwood 2 SWEL

Location (Bldg, Elev, Room/Area): Auxiliary, 330.00 ft, ALL

Manufacturer/Model:

Instructions for Completing Checklist

This checklist may be used to document the results of the Seismic Walkdown of an item of equipment on the SWEL. The space below each of the following questions may be used to record the results of judgments and findings. Additional space is provided at the end of this checklist for documenting other comments.

Anchorage

1. Is anchorage configuration verification required (i.e., is the item one of the 50% of SWEL items requiring such verification)? No

2. Is the anchorage free of bent, broken, missing or loose hardware? Yes

3. Is the anchorage free of corrosion that is more than mild surface oxidation? Yes

4. Is the anchorage free of visible cracks in the concrete near the anchors? Yes

5. Is the anchorage configuration consistent with plant documentation? (Note: This question only applies if the item is one of the 50% for which an anchorage configuration verification is required.) Not Applicable

6. Based on the above anchorage evaluations, is the anchorage free of potentially adverse seismic conditions? Yes
Well-anchored

Status: Y N U

Seismic Walkdown Checklist (SWC)

Equipment ID No.: 2SX01PA

Equipment Class: (5) Horizontal Pumps

Equipment Description: PUMP, 2A ESSENTIAL SER WTR ASMBLY

Interaction Effects

7. Are soft targets free from impact by nearby equipment or structures? Yes
8. Are overhead equipment, distribution systems, ceiling tiles and lighting, and masonry block walls not likely to collapse onto the equipment? Yes
9. Do attached lines have adequate flexibility to avoid damage? Yes
10. Based on the above seismic interaction evaluations, is equipment free of potentially adverse seismic interaction effects? Yes

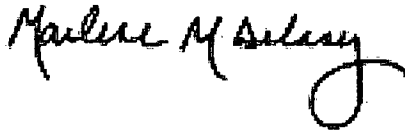
Other Adverse Conditions

11. Have you looked for and found no adverse seismic conditions that could adversely affect the safety functions of the equipment? Yes

Comments


Seismic walkdown team M. Delaney & P. Gazda 8/1/12 pm

Evaluated by:



Marlene Delaney

Date: 10/1/2012



Philip Gazda

10/1/2012

Status: Y N U

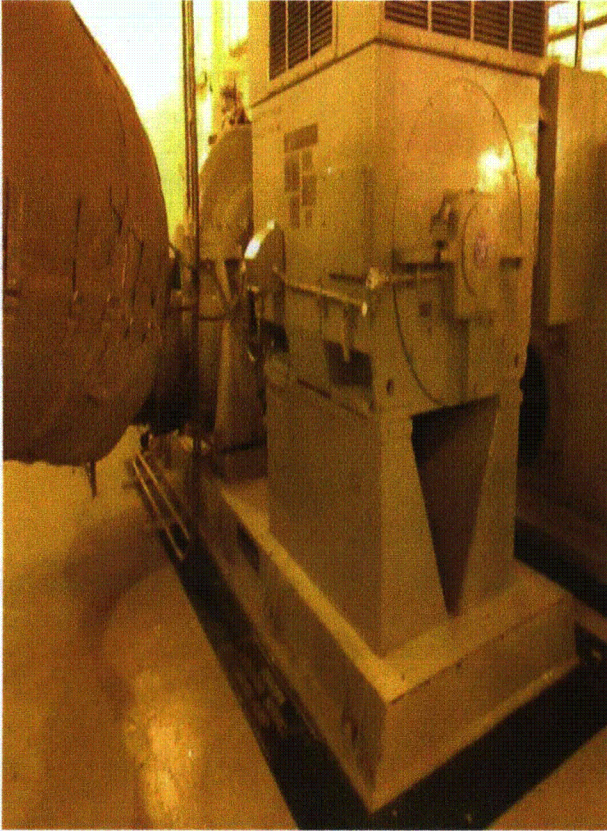
Seismic Walkdown Checklist (SWC)

Equipment ID No.: 2SX01PA

Equipment Class: (5) Horizontal Pumps

Equipment Description: PUMP, 2A ESSENTIAL SER WTR ASMBLY

Photos



2SX01PA 8-1-12 PM 011



2SX01PA8-1-12 PM 010

Status: Y N U

Seismic Walkdown Checklist (SWC)

Equipment ID No.: 2SX01PA-C

Equipment Class: (5) Horizontal Pumps

Equipment Description: PUMP, 2A SX AUX LUBE OIL PP

Project: Braidwood 2 SWEL

Location (Bldg, Elev, Room/Area): Auxiliary, 330.00 ft, ALL

Manufacturer/Model:

Instructions for Completing Checklist

This checklist may be used to document the results of the Seismic Walkdown of an item of equipment on the SWEL. The space below each of the following questions may be used to record the results of judgments and findings. Additional space is provided at the end of this checklist for documenting other comments.

Anchorage

1. Is anchorage configuration verification required (i.e., is the item one of the 50% of SWEL items requiring such verification)? No

2. Is the anchorage free of bent, broken, missing or loose hardware? Not Applicable

3. Is the anchorage free of corrosion that is more than mild surface oxidation? Not Applicable

4. Is the anchorage free of visible cracks in the concrete near the anchors? Not Applicable

5. Is the anchorage configuration consistent with plant documentation? (Note: This question only applies if the item is one of the 50% for which an anchorage configuration verification is required.) Not Applicable

6. Based on the above anchorage evaluations, is the anchorage free of potentially adverse seismic conditions? Yes
Equipment is mounted to oil reservoir. Well-anchored.

Status: Y N U

Seismic Walkdown Checklist (SWC)

Equipment ID No.: 2SX01PA-C

Equipment Class: (5) Horizontal Pumps

Equipment Description: PUMP, 2A SX AUX LUBE OIL PP

Interaction Effects

7. Are soft targets free from impact by nearby equipment or structures? Yes
8. Are overhead equipment, distribution systems, ceiling tiles and lighting, and masonry block walls not likely to collapse onto the equipment? Yes
9. Do attached lines have adequate flexibility to avoid damage? Yes
10. Based on the above seismic interaction evaluations, is equipment free of potentially adverse seismic interaction effects? Yes

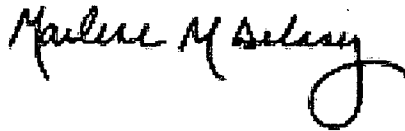
Other Adverse Conditions

11. Have you looked for and found no adverse seismic conditions that could adversely affect the safety functions of the equipment? Yes

Comments

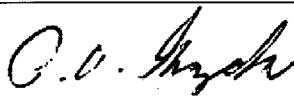
Seismic walkdown team M. Delaney & P. Gazda 8/1/12 pm

Evaluated by:



Marlene Delaney

Date: 10/1/2012



Philip Gazda

10/1/2012

Status: Y N U

Seismic Walkdown Checklist (SWC)

Equipment ID No.: 2SX01PA-C

Equipment Class: (5) Horizontal Pumps

Equipment Description: PUMP, 2A SX AUX LUBE OIL PP

Photos



2SX01PA-C 8-1-12 PM 006

Status: Y N U

Seismic Walkdown Checklist (SWC)

Equipment ID No.: 2SX033

Equipment Class: (8) Motor-Operated and Solenoid-Operated Valves

Equipment Description: ESSENTIAL SERVICE WTR PMP 2A CROSSTIE VLV ASMBLY

Project: Braidwood 2 SWEL

Location (Bldg, Elev, Room/Area): Auxiliary, 330.00 ft, ALL

Manufacturer/Model:

Instructions for Completing Checklist

This checklist may be used to document the results of the Seismic Walkdown of an item of equipment on the SWEL. The space below each of the following questions may be used to record the results of judgments and findings. Additional space is provided at the end of this checklist for documenting other comments.

Anchorage

1. Is anchorage configuration verification required (i.e., is the item one of the 50% of SWEL items requiring such verification)? No

2. Is the anchorage free of bent, broken, missing or loose hardware? Not Applicable

3. Is the anchorage free of corrosion that is more than mild surface oxidation? Not Applicable

4. Is the anchorage free of visible cracks in the concrete near the anchors? Not Applicable

5. Is the anchorage configuration consistent with plant documentation? (Note: This question only applies if the item is one of the 50% for which an anchorage configuration verification is required.) Not Applicable

6. Based on the above anchorage evaluations, is the anchorage free of potentially adverse seismic conditions? Yes

Status: Y N U

Seismic Walkdown Checklist (SWC)

Equipment ID No.: 2SX033

Equipment Class: (8) Motor-Operated and Solenoid-Operated Valves

Equipment Description: ESSENTIAL SERVICE WTR PMP 2A CROSSTIE VLV ASMBLY

Interaction Effects

7. Are soft targets free from impact by nearby equipment or structures? Yes
8. Are overhead equipment, distribution systems, ceiling tiles and lighting, and masonry block walls not likely to collapse onto the equipment? Yes
9. Do attached lines have adequate flexibility to avoid damage? Yes
10. Based on the above seismic interaction evaluations, is equipment free of potentially adverse seismic interaction effects? Yes

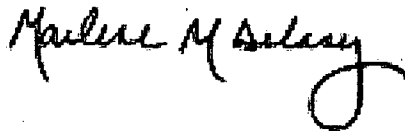
Other Adverse Conditions

11. Have you looked for and found no adverse seismic conditions that could adversely affect the safety functions of the equipment? Yes
Robust, well-supported valve

Comments

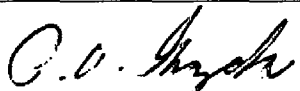
Seismic walkdown team M. Delaney & P. Gazda 8/1/12 pm

Evaluated by:



Marlene Delaney

Date: 10/1/2012



Philip Gazda

10/1/2012

Status: Y N U

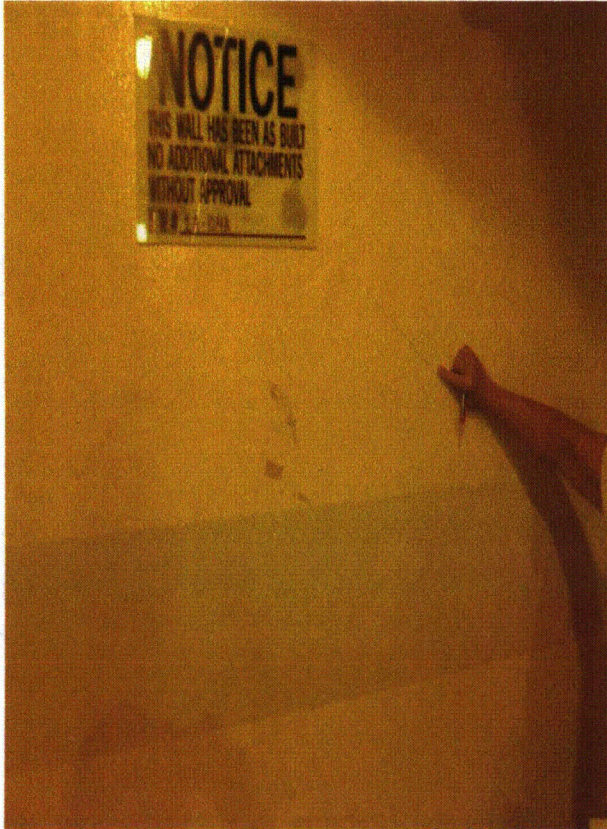
Seismic Walkdown Checklist (SWC)

Equipment ID No.: 2SX033

Equipment Class: (8) Motor-Operated and Solenoid-Operated Valves

Equipment Description: ESSENTIAL SERVICE WTR PMP 2A CROSSTIE VLV ASMBLY

Photos



2SX033 (NP-6695) 8-1-12 PM 020



2SX033 8-1-12 PM 018

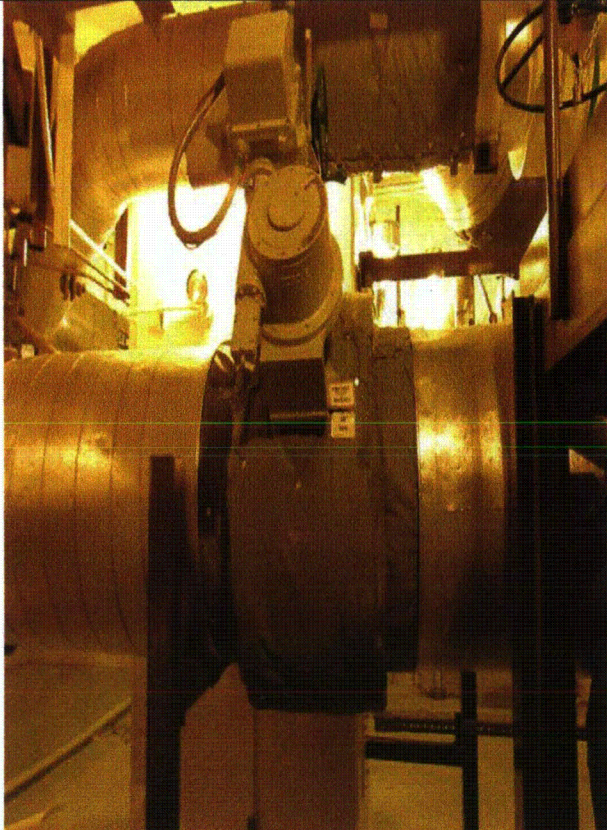
Status: Y N U

Seismic Walkdown Checklist (SWC)

Equipment ID No.: 2SX033

Equipment Class: (8) Motor-Operated and Solenoid-Operated Valves

Equipment Description: ESSENTIAL SERVICE WTR PMP 2A CROSSTIE VLV ASMBLY



2SX033 8-1-12 PM 019