

Status: Y N U

Seismic Walkdown Checklist (SWC)

Equipment ID No.: 1SX01PB

Equipment Class: (5) Horizontal Pumps

Equipment Description: PUMP,1B ESSENTIAL SER WTR ASMBLY

Project: Braidwood 1 SWEL

Location (Bldg, Elev, Room/Area): Auxiliary, 330.00 ft, ALL

Manufacturer/Model:

Instructions for Completing Checklist

This checklist may be used to document the results of the Seismic Walkdown of an item of equipment on the SWEL. The space below each of the following questions may be used to record the results of judgments and findings. Additional space is provided at the end of this checklist for documenting other comments.

Anchorage

1. Is anchorage configuration verification required (i.e., is the item one of the 50% of SWEL items requiring such verification)? Yes

2. Is the anchorage free of bent, broken, missing or loose hardware? Yes

3. Is the anchorage free of corrosion that is more than mild surface oxidation? Yes

4. Is the anchorage free of visible cracks in the concrete near the anchors? Yes

5. Is the anchorage configuration consistent with plant documentation? (Note: This question only applies if the item is one of the 50% for which an anchorage configuration verification is required.) Yes

6. Based on the above anchorage evaluations, is the anchorage free of potentially adverse seismic conditions? Yes
Drawing M-1218 Revision AA Detail 3

Status: Y N U

Seismic Walkdown Checklist (SWC)

Equipment ID No.: 1SX01PB

Equipment Class: (5) Horizontal Pumps

Equipment Description: PUMP, 1B ESSENTIAL SER WTR ASMBLY

Interaction Effects

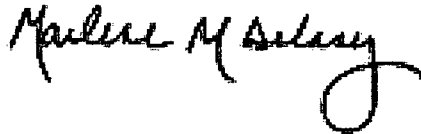
7. Are soft targets free from impact by nearby equipment or structures? Yes
8. Are overhead equipment, distribution systems, ceiling tiles and lighting, and masonry block walls not likely to collapse onto the equipment? Yes
9. Do attached lines have adequate flexibility to avoid damage? Yes
10. Based on the above seismic interaction evaluations, is equipment free of potentially adverse seismic interaction effects? Yes

Other Adverse Conditions

11. Have you looked for and found no adverse seismic conditions that could adversely affect the safety functions of the equipment? Yes
See AWC 28 for discussion on hairline concrete cracks.

Comments

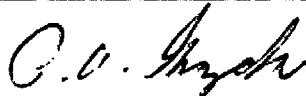
Seismic walkdown performed week of 7/16/12 by M. Delaney & P. Gazda



Evaluated by:

Marlene Delaney

Date: 10/1/2012



Philip Gazda

10/1/2012

Status: Y N U

Seismic Walkdown Checklist (SWC)

Equipment ID No.: 1SX01PB

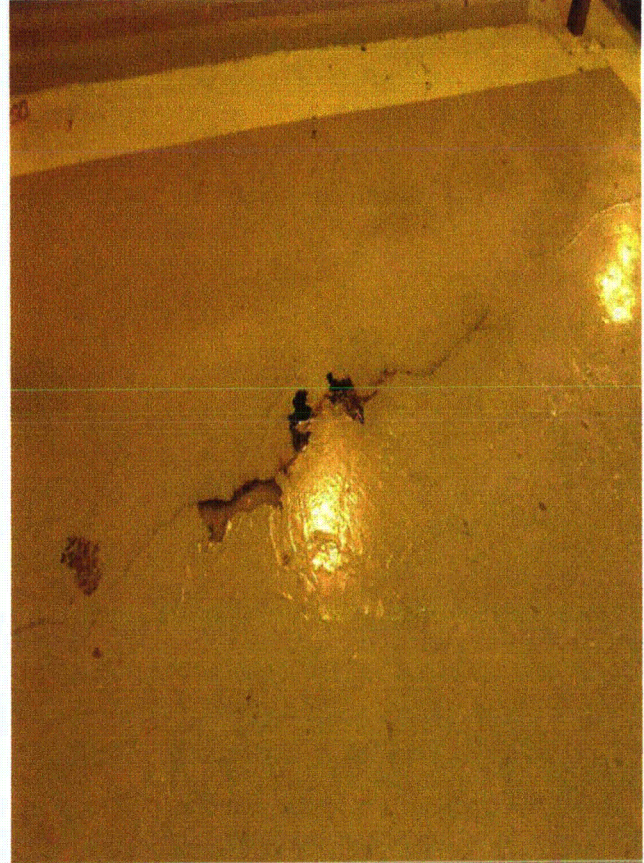
Equipment Class: (5) Horizontal Pumps

Equipment Description: PUMP, 1B ESSENTIAL SER WTR ASMBLY

Photos



1SX01PB (6695 - concrete cracks) 7-18-12 043



1SX01PB (6695 - concrete cracks) 7-18-12 044

Status: Y N U

Seismic Walkdown Checklist (SWC)

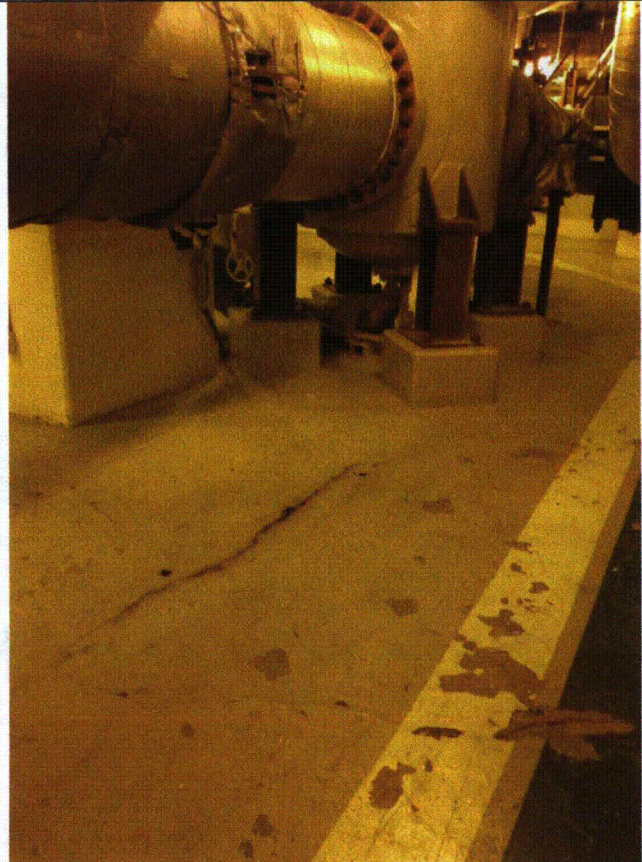
Equipment ID No.: 1SX01PB

Equipment Class: (5) Horizontal Pumps

Equipment Description: PUMP, 1B ESSENTIAL SER WTR ASMBLY



1SX01PB (6695 - concrete cracks) 7-18-12 045



1SX01PB (6695 - concrete cracks) 7-18-12 046

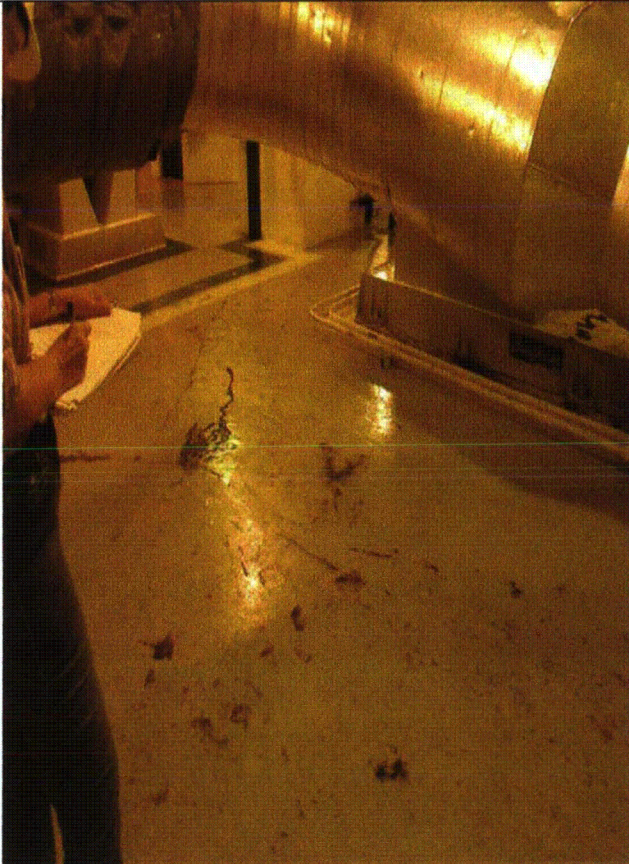
Status: Y N U

Seismic Walkdown Checklist (SWC)

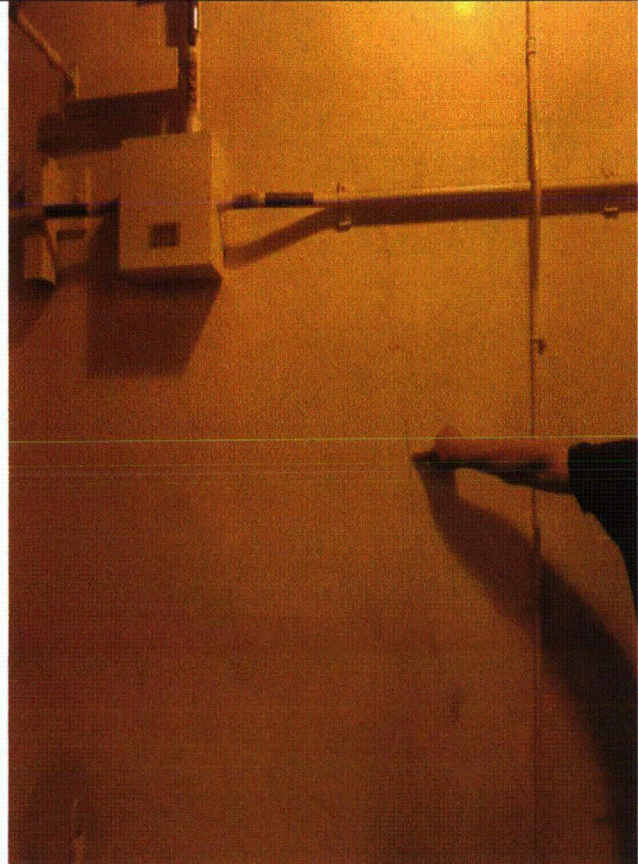
Equipment ID No.: 1SX01PB

Equipment Class: (5) Horizontal Pumps

Equipment Description: PUMP,1B ESSENTIAL SER WTR ASMBLY



1SX01PB (6695 - concrete cracks) 7-18-12 047



1SX01PB (6695 - concrete cracks) 7-18-12 048

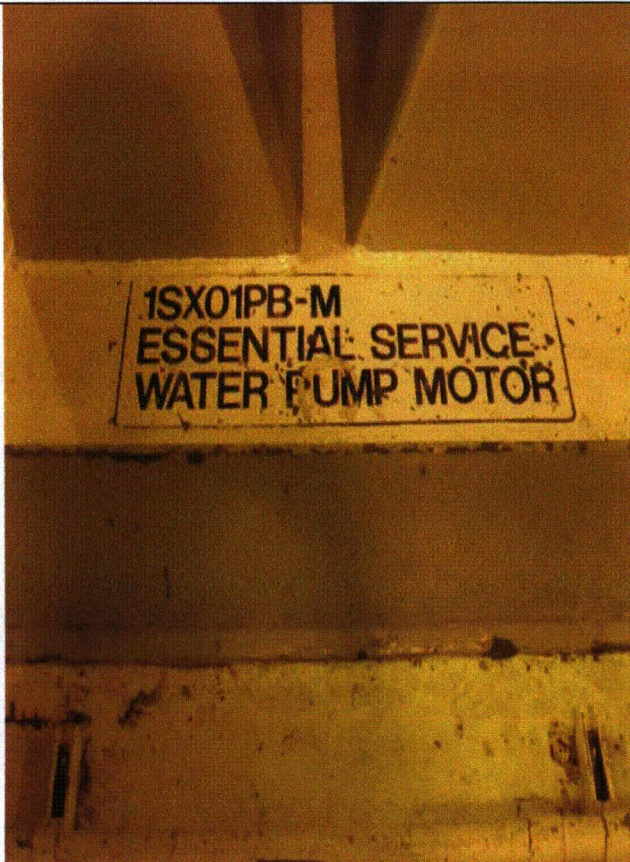
Status: Y N U

Seismic Walkdown Checklist (SWC)

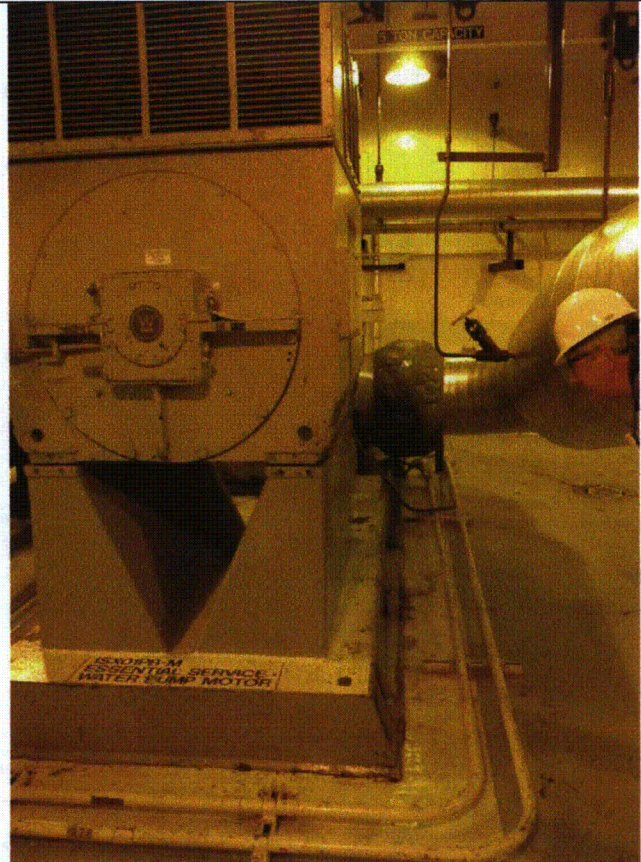
Equipment ID No.: 1SX01PB

Equipment Class: (5) Horizontal Pumps

Equipment Description: PUMP,1B ESSENTIAL SER WTR ASMBLY



1SX01PB 7-18-12 033



1SX01PB 7-18-12 034

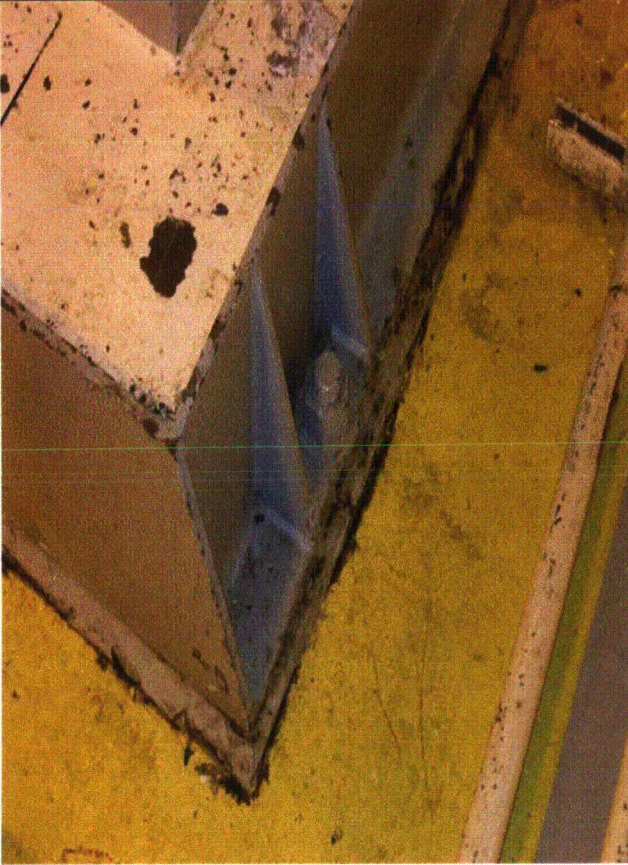
Status: Y N U

Seismic Walkdown Checklist (SWC)

Equipment ID No.: 1SX01PB

Equipment Class: (5) Horizontal Pumps

Equipment Description: PUMP,1B ESSENTIAL SER WTR ASMBLY



1SX01PB 7-18-12 035

Status: Y N U

Seismic Walkdown Checklist (SWC)

Equipment ID No.: 1SX01PB-C

Equipment Class: (5) Horizontal Pumps

Equipment Description: SX PUMP 1B AUX LUBE OIL PP

Project: Braidwood 1 SWEL

Location (Bldg, Elev, Room/Area): Auxiliary, 330.00 ft, ALL

Manufacturer/Model:

Instructions for Completing Checklist

This checklist may be used to document the results of the Seismic Walkdown of an item of equipment on the SWEL. The space below each of the following questions may be used to record the results of judgments and findings. Additional space is provided at the end of this checklist for documenting other comments.

Anchorage

1. Is anchorage configuration verification required (i.e., is the item one of the 50% of SWEL items requiring such verification)? No

2. Is the anchorage free of bent, broken, missing or loose hardware? Not Applicable

3. Is the anchorage free of corrosion that is more than mild surface oxidation? Not Applicable

4. Is the anchorage free of visible cracks in the concrete near the anchors? Not Applicable

5. Is the anchorage configuration consistent with plant documentation? (Note: This question only applies if the item is one of the 50% for which an anchorage configuration verification is required.) Not Applicable

6. Based on the above anchorage evaluations, is the anchorage free of potentially adverse seismic conditions? Yes
Equipment mounted on skid not to structure.
Skid anchorage included with 1SX01PB

Status: Y N U

Seismic Walkdown Checklist (SWC)

Equipment ID No.: 1SX01PB-C

Equipment Class: (5) Horizontal Pumps

Equipment Description: SX PUMP 1B AUX LUBE OIL PP

Interaction Effects

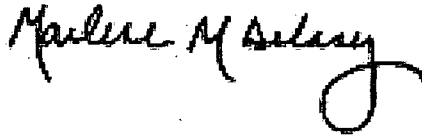
7. Are soft targets free from impact by nearby equipment or structures? Yes
8. Are overhead equipment, distribution systems, ceiling tiles and lighting, and masonry block walls not likely to collapse onto the equipment? Yes
9. Do attached lines have adequate flexibility to avoid damage? Yes
10. Based on the above seismic interaction evaluations, is equipment free of potentially adverse seismic interaction effects? Yes

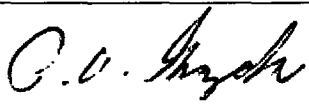
Other Adverse Conditions

11. Have you looked for and found no adverse seismic conditions that could adversely affect the safety functions of the equipment? Yes

Comments

Seismic walkdown performed week of 7/16/12 by M. Delaney & P. Gazda

Evaluated by:  Marlene Delaney Date: 10/1/2012

 Philip Gazda 10/1/2012

Status: Y N U

Seismic Walkdown Checklist (SWC)

Equipment ID No.: 1SX01PB-C

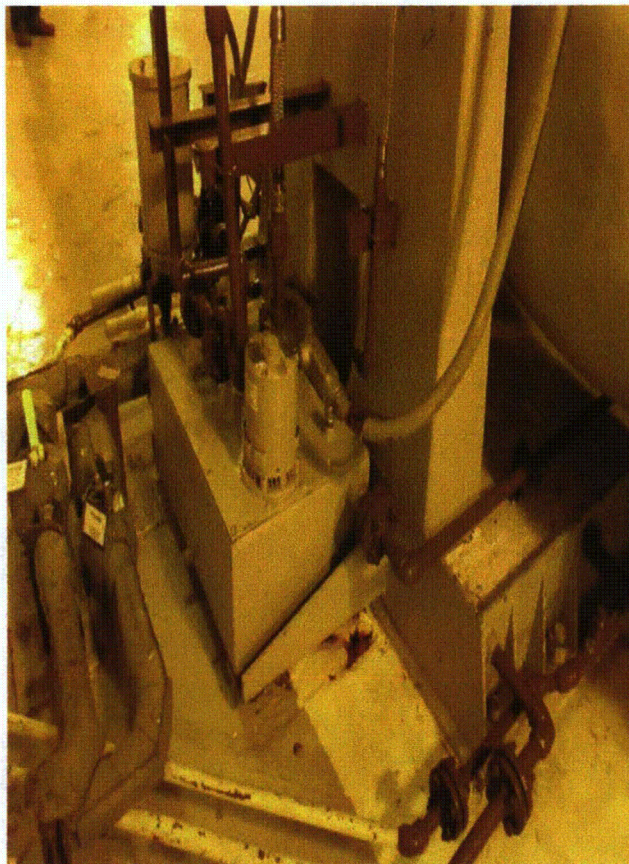
Equipment Class: (5) Horizontal Pumps

Equipment Description: SX PUMP 1B AUX LUBE OIL PP

Photos



1SX01PB-C 7-18-12 041



1SX01PB-C 7-18-12 042

Status: Y N U

Seismic Walkdown Checklist (SWC)

Equipment ID No.: 1SX169B

Equipment Class: (7) Fluid-Operated Valves

Equipment Description: DG 1B SX VLV ASMBLY; 10"

Project: Braidwood 1 SWEL

Location (Bldg, Elev, Room/Area): Auxiliary, 401.00 ft, ALL

Manufacturer/Model:

Instructions for Completing Checklist

This checklist may be used to document the results of the Seismic Walkdown of an item of equipment on the SWEL. The space below each of the following questions may be used to record the results of judgments and findings. Additional space is provided at the end of this checklist for documenting other comments.

Anchorage

1. Is anchorage configuration verification required (i.e., is the item one of the 50% of SWEL items requiring such verification)? No

2. Is the anchorage free of bent, broken, missing or loose hardware? Not Applicable

3. Is the anchorage free of corrosion that is more than mild surface oxidation? Not Applicable

4. Is the anchorage free of visible cracks in the concrete near the anchors? Not Applicable

5. Is the anchorage configuration consistent with plant documentation? (Note: This question only applies if the item is one of the 50% for which an anchorage configuration verification is required.) Not Applicable

6. Based on the above anchorage evaluations, is the anchorage free of potentially adverse seismic conditions? Yes

Status: Y N U

Seismic Walkdown Checklist (SWC)

Equipment ID No.: 1SX169B

Equipment Class: (7) Fluid-Operated Valves

Equipment Description: DG 1B SX VLV ASMBLY; 10"

Interaction Effects

7. Are soft targets free from impact by nearby equipment or structures? Yes
8. Are overhead equipment, distribution systems, ceiling tiles and lighting, and masonry block walls not likely to collapse onto the equipment? Yes
9. Do attached lines have adequate flexibility to avoid damage? Yes
10. Based on the above seismic interaction evaluations, is equipment free of potentially adverse seismic interaction effects? Yes

Other Adverse Conditions

11. Have you looked for and found no adverse seismic conditions that could adversely affect the safety functions of the equipment? Yes
Inspected from floor. Adequately supported.

Comments

Seismic walkdown performed week of 7/16/12 by M. Delaney & P. Gazda

Evaluated by: Marlene M Delaney Marlene Delaney Date: 10/1/2012

P. P. Gazda Philip Gazda 10/1/2012

Status: Y N U

Seismic Walkdown Checklist (SWC)

Equipment ID No.: 1SX169B

Equipment Class: (7) Fluid-Operated Valves

Equipment Description: DG 1B SX VLV ASMBLY; 10"

Photos



1SX169B 7-16-12 073

Status: Y N U

Seismic Walkdown Checklist (SWC)

Equipment ID No.: 1SX173

Equipment Class: (8) Motor-Operated and Solenoid-Operated Valves

Equipment Description: SX SUP VLV TO ENG Driven CLG WTR PP FOR Diesel Driven AF PP_ASSY;
6"

Project: Braidwood 1 SWEL

Location (Bldg, Elev, Room/Area): Auxiliary, 383.00 ft, ALL

Manufacturer/Model:

Instructions for Completing Checklist

This checklist may be used to document the results of the Seismic Walkdown of an item of equipment on the SWEL. The space below each of the following questions may be used to record the results of judgments and findings. Additional space is provided at the end of this checklist for documenting other comments.

Anchorage

1. Is anchorage configuration verification required (i.e., is the item one of the 50% of SWEL items requiring such verification)? No

2. Is the anchorage free of bent, broken, missing or loose hardware? Not Applicable

3. Is the anchorage free of corrosion that is more than mild surface oxidation? Not Applicable

4. Is the anchorage free of visible cracks in the concrete near the anchors? Not Applicable

5. Is the anchorage configuration consistent with plant documentation? (Note: This question only applies if the item is one of the 50% for which an anchorage configuration verification is required.) Not Applicable

6. Based on the above anchorage evaluations, is the anchorage free of potentially adverse seismic conditions? Yes

Status: Y N U

Seismic Walkdown Checklist (SWC)

Equipment ID No.: 1SX173

Equipment Class: (8) Motor-Operated and Solenoid-Operated Valves

SX SUP VLV TO ENG Driven CLG WTR PP FOR Diesel Driven AF PP_ASSY;

Equipment Description: 6"

Interaction Effects

7. Are soft targets free from impact by nearby equipment or structures? Yes
8. Are overhead equipment, distribution systems, ceiling tiles and lighting, and masonry block walls not likely to collapse onto the equipment? Yes
9. Do attached lines have adequate flexibility to avoid damage? Yes
10. Based on the above seismic interaction evaluations, is equipment free of potentially adverse seismic interaction effects? Yes

Other Adverse Conditions

11. Have you looked for and found no adverse seismic conditions that could adversely affect the safety functions of the equipment?
well-supported pipe Yes

Comments

Seismic walkdown performed week of 7/16/12 by M. Delaney & P. Gazda

Evaluated by: Marlene M Delaney Marlene Delaney Date: 10/1/2012

P. V. Gazda Philip Gazda 10/1/2012

Status: Y N U

Seismic Walkdown Checklist (SWC)

Equipment ID No.: 1SX173

Equipment Class: (8) Motor-Operated and Solenoid-Operated Valves

SX SUP VLV TO ENG Driven CLG WTR PP FOR Diesel Driven AF PP_ASSY;

Equipment Description: 6"

Photos



1SX173 7-17-12 Group 2 033



1SX173 7-17-12 Group 2 034

Status: Y N U

Seismic Walkdown Checklist (SWC)

Equipment ID No.: 1TE-0604

Equipment Class: (19) Temperature Sensors

Equipment Description: RHR LP 1A RETURN TEMPERATURE RTD

Project: Braidwood 1 SWEL

Location (Bldg, Elev, Room/Area): Auxiliary, 375.00 ft, ALL

Manufacturer/Model:

Instructions for Completing Checklist

This checklist may be used to document the results of the Seismic Walkdown of an item of equipment on the SWEL. The space below each of the following questions may be used to record the results of judgments and findings. Additional space is provided at the end of this checklist for documenting other comments.

Anchorage

1. Is anchorage configuration verification required (i.e., is the item one of the 50% of SWEL items requiring such verification)? No

2. Is the anchorage free of bent, broken, missing or loose hardware? Not Applicable

3. Is the anchorage free of corrosion that is more than mild surface oxidation? Not Applicable

4. Is the anchorage free of visible cracks in the concrete near the anchors? Not Applicable

5. Is the anchorage configuration consistent with plant documentation? (Note: This question only applies if the item is one of the 50% for which an anchorage configuration verification is required.) Not Applicable

6. Based on the above anchorage evaluations, is the anchorage free of potentially adverse seismic conditions? Yes

Status: Y N U

Seismic Walkdown Checklist (SWC)

Equipment ID No.: 1TE-0604

Equipment Class: (19) Temperature Sensors

Equipment Description: RHR LP 1A RETURN TEMPERATURE RTD

Interaction Effects

7. Are soft targets free from impact by nearby equipment or structures? Yes
8. Are overhead equipment, distribution systems, ceiling tiles and lighting, and masonry block walls not likely to collapse onto the equipment? Yes
9. Do attached lines have adequate flexibility to avoid damage? Yes
10. Based on the above seismic interaction evaluations, is equipment free of potentially adverse seismic interaction effects? Yes

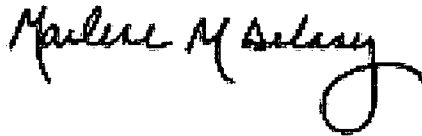
Other Adverse Conditions

11. Have you looked for and found no adverse seismic conditions that could adversely affect the safety functions of the equipment? Yes

Comments

Seismic walkdown performed week of 7/16/12 by M. Delaney & P. Gazda

Evaluated by:



Marlene Delaney

Date: 10/1/2012



Philip Gazda

10/1/2012

Status: Y N U

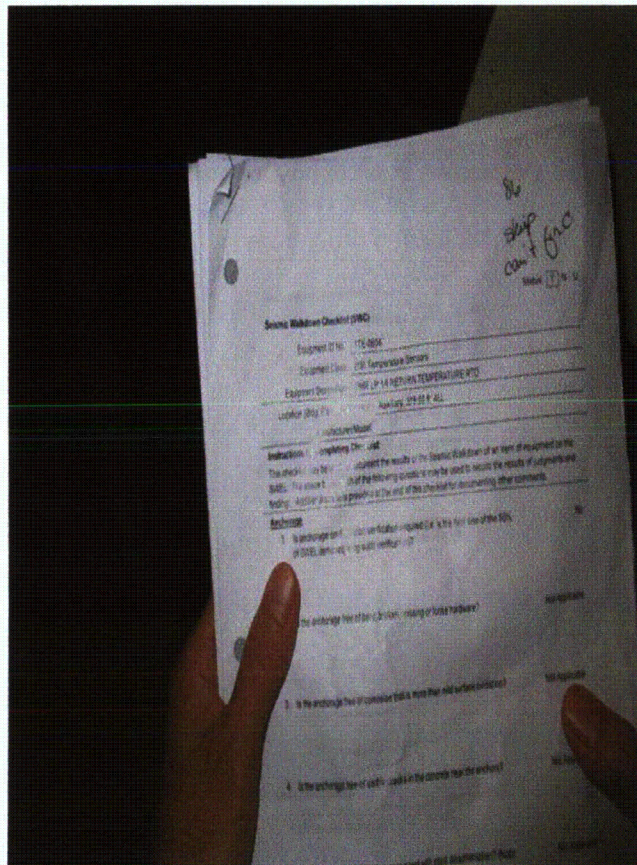
Seismic Walkdown Checklist (SWC)

Equipment ID No.: 1TE-0604

Equipment Class: (19) Temperature Sensors

Equipment Description: RHR LP 1A RETURN TEMPERATURE RTD

Photos



1TE-0604 7-19-12 Group 2 009



1TE-0604 7-19-12 Group 2 010

Status: Y N U

Seismic Walkdown Checklist (SWC)

Equipment ID No.: 1TI-0628

Equipment Class: (19) Temperature Sensors

Equipment Description: SPENT FUEL POOL HEAT EXCH OUTLET TEMP INDICAT

Project: Braidwood 1 SWEL

Location (Bldg, Elev, Room/Area): Auxiliary, 330.00 ft, ALL

Manufacturer/Model:

Instructions for Completing Checklist

This checklist may be used to document the results of the Seismic Walkdown of an item of equipment on the SWEL. The space below each of the following questions may be used to record the results of judgments and findings. Additional space is provided at the end of this checklist for documenting other comments.

Anchorage

1. Is anchorage configuration verification required (i.e., is the item one of the 50% of SWEL items requiring such verification)? No

2. Is the anchorage free of bent, broken, missing or loose hardware? Not Applicable

3. Is the anchorage free of corrosion that is more than mild surface oxidation? Not Applicable

4. Is the anchorage free of visible cracks in the concrete near the anchors? Not Applicable

5. Is the anchorage configuration consistent with plant documentation? (Note: This question only applies if the item is one of the 50% for which an anchorage configuration verification is required.) Not Applicable

6. Based on the above anchorage evaluations, is the anchorage free of potentially adverse seismic conditions? Yes

Status: Y N U

Seismic Walkdown Checklist (SWC)

Equipment ID No.: 1TI-0628

Equipment Class: (19) Temperature Sensors

Equipment Description: SPENT FUEL POOL HEAT EXCH OUTLET TEMP INDICAT

Interaction Effects

7. Are soft targets free from impact by nearby equipment or structures? Yes
8. Are overhead equipment, distribution systems, ceiling tiles and lighting, and masonry block walls not likely to collapse onto the equipment? Yes
9. Do attached lines have adequate flexibility to avoid damage? Yes
10. Based on the above seismic interaction evaluations, is equipment free of potentially adverse seismic interaction effects? Yes

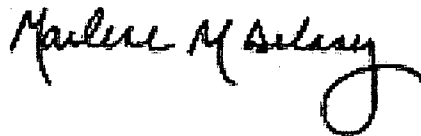
Other Adverse Conditions

11. Have you looked for and found no adverse seismic conditions that could adversely affect the safety functions of the equipment? Yes

Comments

Seismic walkdown performed week of 7/16/12 by M. Delaney & P. Gazda

Evaluated by:



Marlene Delaney

Date: 10/1/2012



Philip Gazda

10/1/2012

Status: Y N U

Seismic Walkdown Checklist (SWC)

Equipment ID No.: 1TI-0628

Equipment Class: (19) Temperature Sensors

Equipment Description: SPENT FUEL POOL HEAT EXCH OUTLET TEMP INDICAT

Photos



1TI-0628 7-18-12 068

Status: Y N U

Seismic Walkdown Checklist (SWC)

Equipment ID No.: 1VA01SB

Equipment Class: (5) Horizontal Pumps

Equipment Description: COOLER ESSENTIAL SERVICE WATER PUMP 95-10

Project: Braidwood 1 SWEL

Location (Bldg, Elev, Room/Area): Auxiliary, 330.00 ft, ALL

Manufacturer/Model:

Instructions for Completing Checklist

This checklist may be used to document the results of the Seismic Walkdown of an item of equipment on the SWEL. The space below each of the following questions may be used to record the results of judgments and findings. Additional space is provided at the end of this checklist for documenting other comments.

Anchorage

1. Is anchorage configuration verification required (i.e., is the item one of the 50% of SWEL items requiring such verification)? Yes

2. Is the anchorage free of bent, broken, missing or loose hardware? Yes

3. Is the anchorage free of corrosion that is more than mild surface oxidation? Yes

4. Is the anchorage free of visible cracks in the concrete near the anchors? Yes

5. Is the anchorage configuration consistent with plant documentation? (Note: This question only applies if the item is one of the 50% for which an anchorage configuration verification is required.) Yes
Drawing M-1218 Revision AA Detail 83

6. Based on the above anchorage evaluations, is the anchorage free of potentially adverse seismic conditions? Yes

Status: Y N U

Seismic Walkdown Checklist (SWC)

Equipment ID No.: 1VA01SB

Equipment Class: (5) Horizontal Pumps

Equipment Description: COOLER ESSENTIAL SERVICE WATER PUMP 95-10

Interaction Effects

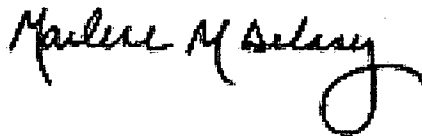
7. Are soft targets free from impact by nearby equipment or structures? Yes
8. Are overhead equipment, distribution systems, ceiling tiles and lighting, and masonry block walls not likely to collapse onto the equipment? Yes
9. Do attached lines have adequate flexibility to avoid damage? Yes
10. Based on the above seismic interaction evaluations, is equipment free of potentially adverse seismic interaction effects? Yes

Other Adverse Conditions

11. Have you looked for and found no adverse seismic conditions that could adversely affect the safety functions of the equipment? Yes

Comments

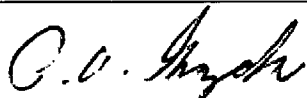
Seismic walkdown performed week of 7/16/12 by M. Delaney & P. Gazda



Evaluated by:

Marlene Delaney

Date: 10/1/2012



Philip Gazda

10/1/2012

Status: Y N U

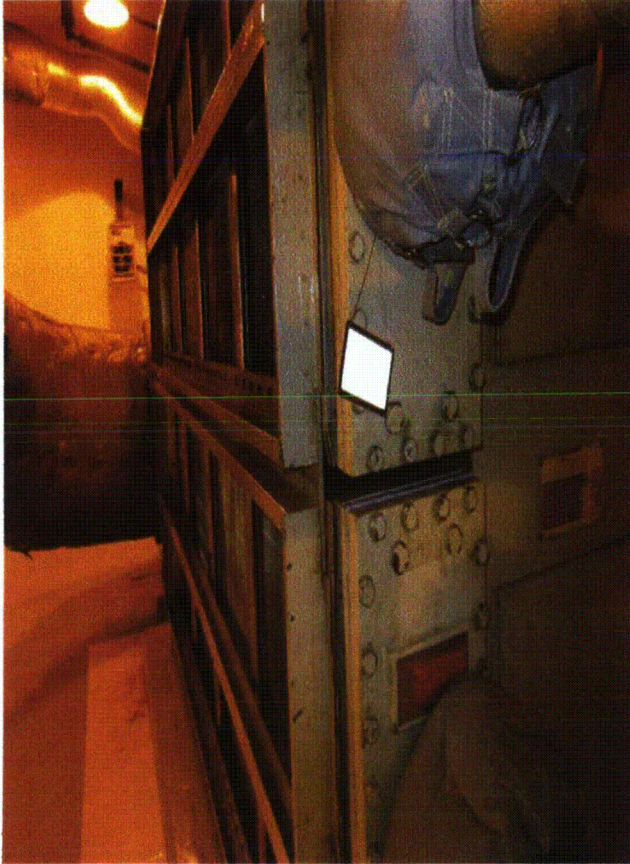
Seismic Walkdown Checklist (SWC)

Equipment ID No.: 1VA01SB

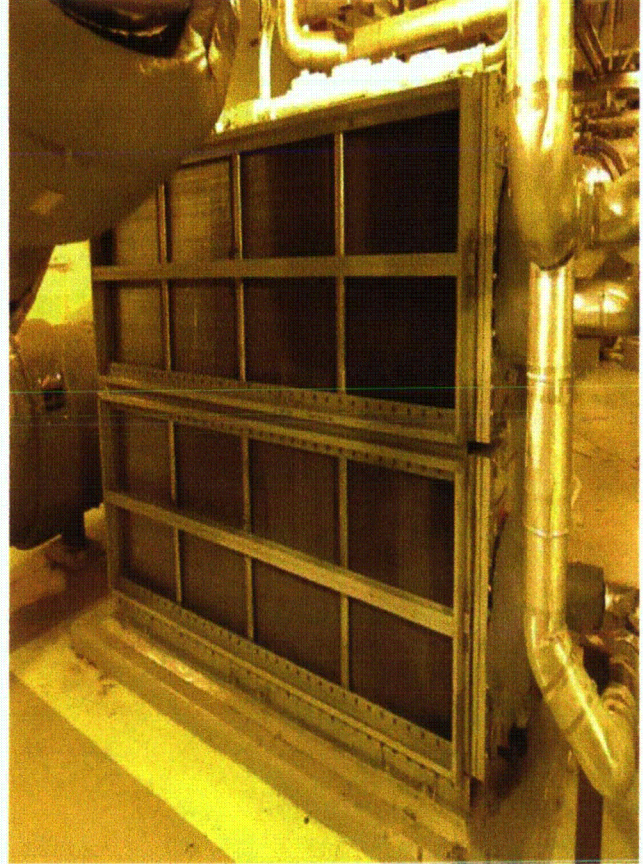
Equipment Class: (5) Horizontal Pumps

Equipment Description: COOLER ESSENTIAL SERVICE WATER PUMP 95-10

Photos



1VA01SB 7-18-12 036



1VA01SB 7-18-12 037

Status: Y N U

Seismic Walkdown Checklist (SWC)

Equipment ID No.: 1VA01SB

Equipment Class: (5) Horizontal Pumps

Equipment Description: COOLER ESSENTIAL SERVICE WATER PUMP 95-10



1VA01SB 7-18-12 038

Status: Y N U

Seismic Walkdown Checklist (SWC)

Equipment ID No.: 1VA02SB

Equipment Class: (10) Air Handlers

Equipment Description: 1B RHR PUMP ROOM CUB CLR ASMBLY

Project: Braidwood 1 SWEL

Location (Bldg, Elev, Room/Area): Auxiliary, 346.00 ft, ALL

Manufacturer/Model:

Instructions for Completing Checklist

This checklist may be used to document the results of the Seismic Walkdown of an item of equipment on the SWEL. The space below each of the following questions may be used to record the results of judgments and findings. Additional space is provided at the end of this checklist for documenting other comments.

Anchorage

1. Is anchorage configuration verification required (i.e., is the item one of the 50% of SWEL items requiring such verification)? Yes

2. Is the anchorage free of bent, broken, missing or loose hardware? Yes

3. Is the anchorage free of corrosion that is more than mild surface oxidation? Yes

4. Is the anchorage free of visible cracks in the concrete near the anchors? Yes

5. Is the anchorage configuration consistent with plant documentation? (Note: This question only applies if the item is one of the 50% for which an anchorage configuration verification is required.) Yes
Drawing M-1219 Sheet 3 Revision AE
Confirmed missing washer, broken bolt

6. Based on the above anchorage evaluations, is the anchorage free of potentially adverse seismic conditions? Yes

Status: Y N U

Seismic Walkdown Checklist (SWC)

Equipment ID No.: 1VA02SB

Equipment Class: (10) Air Handlers

Equipment Description: 1B RHR PUMP ROOM CUB CLR ASMBLY

Interaction Effects

7. Are soft targets free from impact by nearby equipment or structures? Yes
8. Are overhead equipment, distribution systems, ceiling tiles and lighting, and masonry block walls not likely to collapse onto the equipment? Yes
9. Do attached lines have adequate flexibility to avoid damage? Yes
10. Based on the above seismic interaction evaluations, is equipment free of potentially adverse seismic interaction effects? Yes

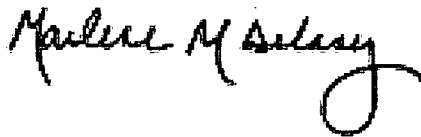
Other Adverse Conditions

11. Have you looked for and found no adverse seismic conditions that could adversely affect the safety functions of the equipment? Yes

Comments

Seismic walkdown performed week of 7/16/12 by M. Delaney & P. Gazda

Evaluated by:



Marlene Delaney

Date: 10/1/2012



Philip Gazda

10/1/2012

Status: Y N U

Seismic Walkdown Checklist (SWC)

Equipment ID No.: 1VA02SB

Equipment Class: (10) Air Handlers

Equipment Description: 1B RHR PUMP ROOM CUB CLR ASMBLY

Photos



1VA02SB 7-19-12 003



1VA02SB 7-19-12 004

Status: Y N U

Seismic Walkdown Checklist (SWC)

Equipment ID No.: 1VA02SB

Equipment Class: (10) Air Handlers

Equipment Description: 1B RHR PUMP ROOM CUB CLR ASMBLY



1VA02SB 7-19-12 005

Status: Y N U

Seismic Walkdown Checklist (SWC)

Equipment ID No.: 1VA06SA

Equipment Class: (10) Air Handlers

Equipment Description: COOLER,CENTRIFUGAL CHARGING PUMP 1A

Project: Braidwood 1 SWEL

Location (Bldg, Elev, Room/Area): Auxiliary, 364.00 ft, ALL

Manufacturer/Model:

Instructions for Completing Checklist

This checklist may be used to document the results of the Seismic Walkdown of an item of equipment on the SWEL. The space below each of the following questions may be used to record the results of judgments and findings. Additional space is provided at the end of this checklist for documenting other comments.

Anchorage

1. Is anchorage configuration verification required (i.e., is the item one of the 50% of SWEL items requiring such verification)? Yes

2. Is the anchorage free of bent, broken, missing or loose hardware? Yes

3. Is the anchorage free of corrosion that is more than mild surface oxidation? Yes

4. Is the anchorage free of visible cracks in the concrete near the anchors? Yes

5. Is the anchorage configuration consistent with plant documentation? (Note: This question only applies if the item is one of the 50% for which an anchorage configuration verification is required.)
Drawing M-1219 Sheet 3 Revision AE Detail 87 Yes

6. Based on the above anchorage evaluations, is the anchorage free of potentially adverse seismic conditions? Yes

Status: Y N U

Seismic Walkdown Checklist (SWC)

Equipment ID No.: 1VA06SA

Equipment Class: (10) Air Handlers

Equipment Description: COOLER,CENTRIFUGAL CHARGING PUMP 1A

Interaction Effects

7. Are soft targets free from impact by nearby equipment or structures? Yes
8. Are overhead equipment, distribution systems, ceiling tiles and lighting, and masonry block walls not likely to collapse onto the equipment? Yes
9. Do attached lines have adequate flexibility to avoid damage? Yes
10. Based on the above seismic interaction evaluations, is equipment free of potentially adverse seismic interaction effects? Yes

Other Adverse Conditions

11. Have you looked for and found no adverse seismic conditions that could adversely affect the safety functions of the equipment? Yes

Comments

Seismic walkdown performed week of 7/16/12 by M. Delaney & P. Gazda

Evaluated by: Marlene M Delaney Marlene Delaney Date: 10/1/2012

P. P. Gazda Philip Gazda 10/1/2012

Status: Y N U

Seismic Walkdown Checklist (SWC)

Equipment ID No.: 1VA06SA

Equipment Class: (10) Air Handlers

Equipment Description: COOLER,CENTRIFUGAL CHARGING PUMP 1A

Photos



1VA06SA 7-19-12 009

Status: Y N U

Seismic Walkdown Checklist (SWC)

Equipment ID No.: 1VA08CB

Equipment Class: (10) Air Handlers

Equipment Description: 1B DIESEL DRIVEN AF PUMP CUBICLE CLR (1VA08S) 1B FAN

Project: Braidwood 1 SWEL

Location (Bldg, Elev, Room/Area): Auxiliary, 383.00 ft, ALL

Manufacturer/Model:

Instructions for Completing Checklist

This checklist may be used to document the results of the Seismic Walkdown of an item of equipment on the SWEL. The space below each of the following questions may be used to record the results of judgments and findings. Additional space is provided at the end of this checklist for documenting other comments.

Anchorage

1. Is anchorage configuration verification required (i.e., is the item one of the 50% of SWEL items requiring such verification)? No

2. Is the anchorage free of bent, broken, missing or loose hardware? Not Applicable

3. Is the anchorage free of corrosion that is more than mild surface oxidation? Not Applicable

4. Is the anchorage free of visible cracks in the concrete near the anchors? Not Applicable

5. Is the anchorage configuration consistent with plant documentation? (Note: This question only applies if the item is one of the 50% for which an anchorage configuration verification is required.) Not Applicable

6. Based on the above anchorage evaluations, is the anchorage free of potentially adverse seismic conditions? Yes

Status: Y N U

Seismic Walkdown Checklist (SWC)

Equipment ID No.: 1VA08CB

Equipment Class: (10) Air Handlers

Equipment Description: 1B DIESEL DRIVEN AF PUMP CUBICLE CLR (1VA08S) 1B FAN

Interaction Effects

7. Are soft targets free from impact by nearby equipment or structures? Yes
8. Are overhead equipment, distribution systems, ceiling tiles and lighting, and masonry block walls not likely to collapse onto the equipment? Yes
Block walls near equipment are seismically designed.
9. Do attached lines have adequate flexibility to avoid damage? Yes
10. Based on the above seismic interaction evaluations, is equipment free of potentially adverse seismic interaction effects? Yes

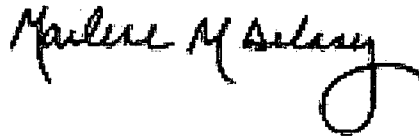
Other Adverse Conditions

11. Have you looked for and found no adverse seismic conditions that could adversely affect the safety functions of the equipment? Yes

Comments

Seismic walkdown performed week of 7/16/12 by M. Delaney & P. Gazda

Evaluated by:



Marlene Delaney

Date: 10/1/2012



Philip Gazda

10/1/2012

Status: Y N U

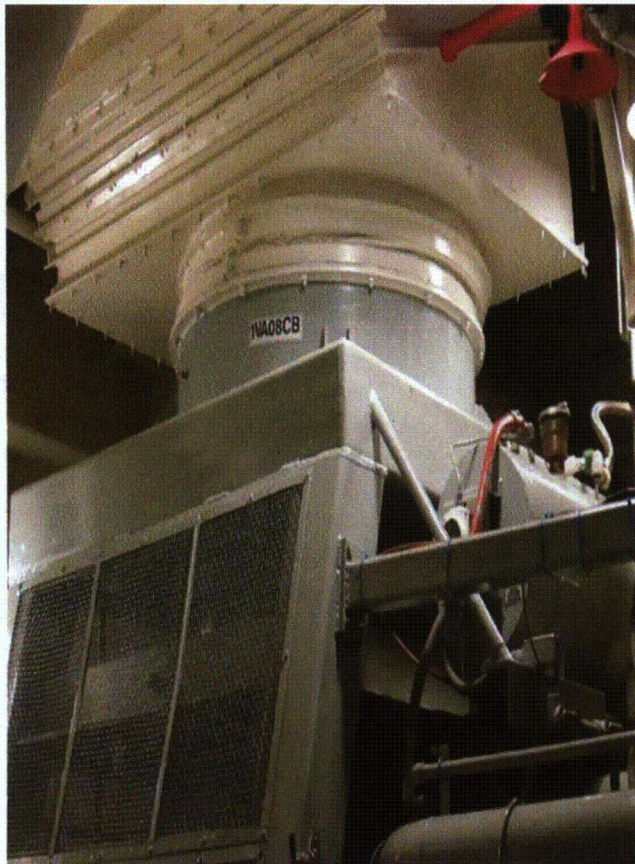
Seismic Walkdown Checklist (SWC)

Equipment ID No.: 1VA08CB

Equipment Class: (10) Air Handlers

Equipment Description: 1B DIESEL DRIVEN AF PUMP CUBICLE CLR (1VA08S) 1B FAN

Photos



1VA08CB 7-17-12 Group 2 027



1VA08CB 7-17-12 Group 2 028

Status: Y N U

Seismic Walkdown Checklist (SWC)

Equipment ID No.: 1VA08CB

Equipment Class: (10) Air Handlers

Equipment Description: 1B DIESEL DRIVEN AF PUMP CUBICLE CLR (1VA08S) 1B FAN



1VA08CB 7-17-12 Group 2 029

Status: Y N U

Seismic Walkdown Checklist (SWC)

Equipment ID No.: 1VA11J

Equipment Class: (20) Instrumentation and Control Panels and Cabinets

Equipment Description: CENTRIFUGAL CHARGING PCUBICLE COOLER LOCAL P

Project: Braidwood 1 SWEL

Location (Bldg, Elev, Room/Area): Auxiliary, 364.00 ft, ALL

Manufacturer/Model:

Instructions for Completing Checklist

This checklist may be used to document the results of the Seismic Walkdown of an item of equipment on the SWEL. The space below each of the following questions may be used to record the results of judgments and findings. Additional space is provided at the end of this checklist for documenting other comments.

Anchorage

1. Is anchorage configuration verification required (i.e., is the item one of the 50% of SWEL items requiring such verification)? No

2. Is the anchorage free of bent, broken, missing or loose hardware? Yes

3. Is the anchorage free of corrosion that is more than mild surface oxidation? Yes

4. Is the anchorage free of visible cracks in the concrete near the anchors? Yes

5. Is the anchorage configuration consistent with plant documentation? (Note: This question only applies if the item is one of the 50% for which an anchorage configuration verification is required.) Not Applicable

6. Based on the above anchorage evaluations, is the anchorage free of potentially adverse seismic conditions? Yes
Well anchored to wall

Status: Y N U

Seismic Walkdown Checklist (SWC)

Equipment ID No.: 1VA11J

Equipment Class: (20) Instrumentation and Control Panels and Cabinets

Equipment Description: CENTRIFUGAL CHARGING PCUBICLE COOLER LOCAL P

Interaction Effects

7. Are soft targets free from impact by nearby equipment or structures? Yes
8. Are overhead equipment, distribution systems, ceiling tiles and lighting, and masonry block walls not likely to collapse onto the equipment? Yes
9. Do attached lines have adequate flexibility to avoid damage? Yes
10. Based on the above seismic interaction evaluations, is equipment free of potentially adverse seismic interaction effects? Yes

Other Adverse Conditions

11. Have you looked for and found no adverse seismic conditions that could adversely affect the safety functions of the equipment? Yes

Comments

Seismic walkdown performed week of 7/16/12 by M. Delaney & P. Gazda

Evaluated by: Marlene M. Delaney Marlene Delaney Date: 10/1/2012

P. Gazda Philip Gazda 10/1/2012

Status: Y N U

Seismic Walkdown Checklist (SWC)

Equipment ID No.: 1VA11J

Equipment Class: (20) Instrumentation and Control Panels and Cabinets

Equipment Description: CENTRIFUGAL CHARGING PCUBICLE COOLER LOCAL P

Photos



1VA11J 7-19-12 018

Status: Y N U

Seismic Walkdown Checklist (SWC)

Equipment ID No.: 1VD01CB

Equipment Class: (9) Fans

Equipment Description: 1B DG ROOM HVAC FAN ASMBLY

Project: Braidwood 1 SWEL

Location (Bldg, Elev, Room/Area): Auxiliary, 401.00 ft, ALL

Manufacturer/Model:

Instructions for Completing Checklist

This checklist may be used to document the results of the Seismic Walkdown of an item of equipment on the SWEL. The space below each of the following questions may be used to record the results of judgments and findings. Additional space is provided at the end of this checklist for documenting other comments.

Anchorage

1. Is anchorage configuration verification required (i.e., is the item one of the 50% of SWEL items requiring such verification)? Yes

2. Is the anchorage free of bent, broken, missing or loose hardware? Yes

3. Is the anchorage free of corrosion that is more than mild surface oxidation? Yes

4. Is the anchorage free of visible cracks in the concrete near the anchors? Yes

5. Is the anchorage configuration consistent with plant documentation? (Note: This question only applies if the item is one of the 50% for which an anchorage configuration verification is required.)
Drawing M-1222 Sheet 6 Revision N Detail 93 for 1VD01CB Yes

6. Based on the above anchorage evaluations, is the anchorage free of potentially adverse seismic conditions? Yes

Status: Y N U

Seismic Walkdown Checklist (SWC)

Equipment ID No.: 1VD01CB

Equipment Class: (9) Fans

Equipment Description: 1B DG ROOM HVAC FAN ASMBLY

Interaction Effects

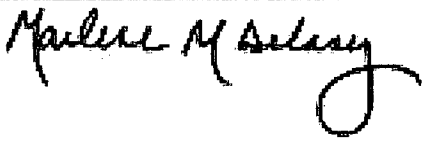
7. Are soft targets free from impact by nearby equipment or structures? Yes
8. Are overhead equipment, distribution systems, ceiling tiles and lighting, and masonry block walls not likely to collapse onto the equipment? Yes
9. Do attached lines have adequate flexibility to avoid damage? Yes
10. Based on the above seismic interaction evaluations, is equipment free of potentially adverse seismic interaction effects? Yes

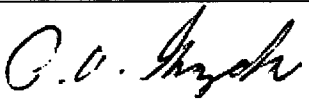
Other Adverse Conditions

11. Have you looked for and found no adverse seismic conditions that could adversely affect the safety functions of the equipment? Yes

Comments

Seismic walkdown performed week of 7/16/12 by M. Delaney & P. Gazda

Evaluated by:  Marlene Delaney Date: 10/1/2012

 Philip Gazda 10/1/2012

Status: Y N U

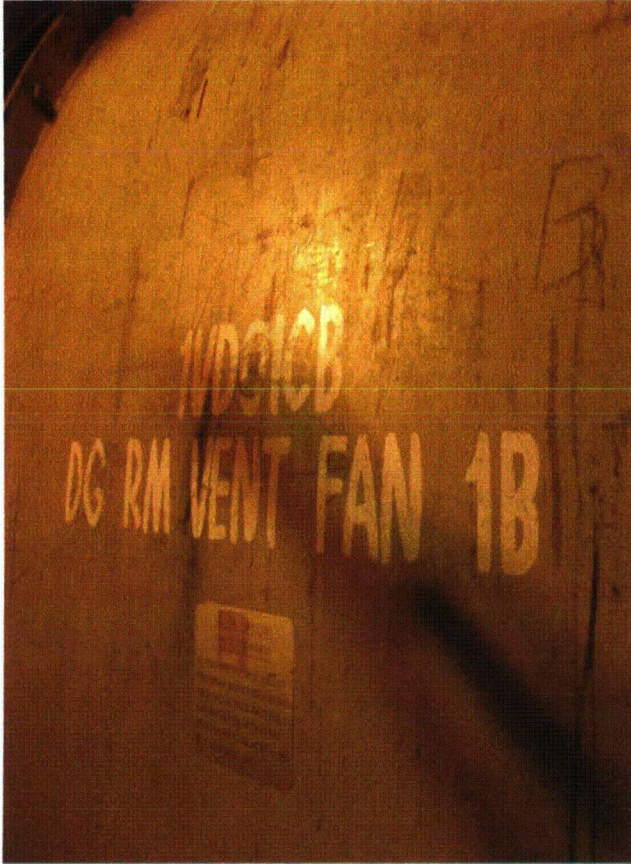
Seismic Walkdown Checklist (SWC)

Equipment ID No.: 1VD01CB

Equipment Class: (9) Fans

Equipment Description: 1B DG ROOM HVAC FAN ASMBLY

Photos



1VD01CB 7-16-12 077



1VD01CB 7-16-12 078

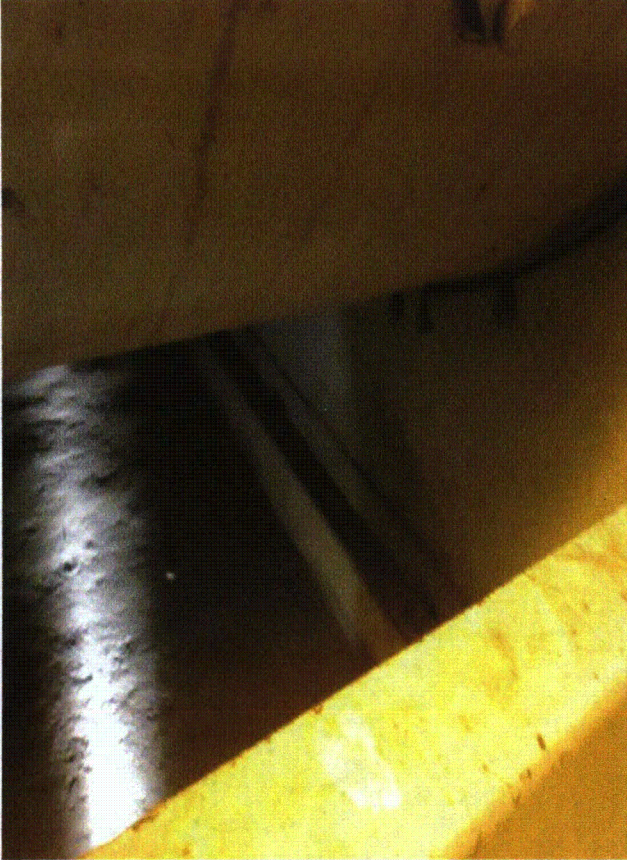
Status: Y N U

Seismic Walkdown Checklist (SWC)

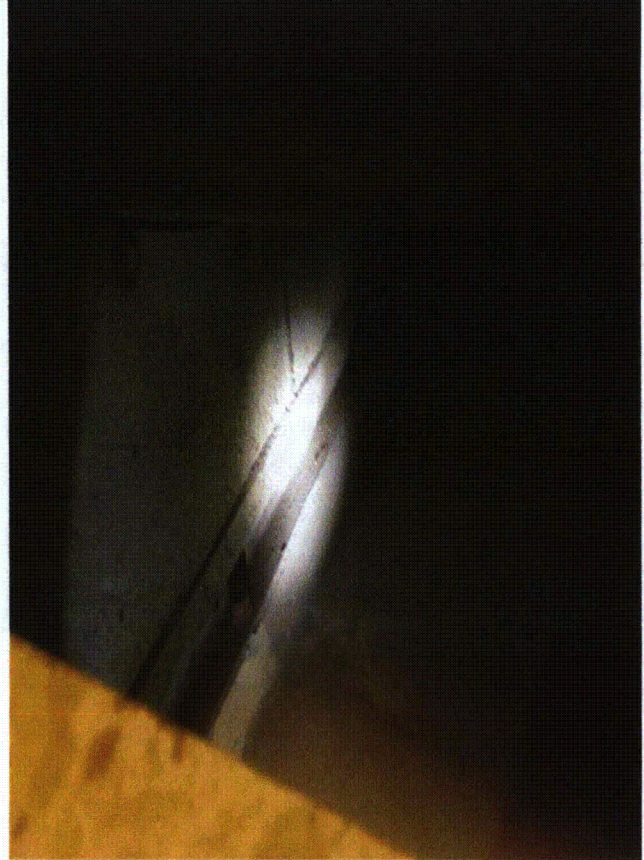
Equipment ID No.: 1VD01CB

Equipment Class: (9) Fans

Equipment Description: 1B DG ROOM HVAC FAN ASMBLY



1VD01CB 7-16-12 079



1VD01CB 7-16-12 080

Status: Y N U

Seismic Walkdown Checklist (SWC)

Equipment ID No.: 1VD05J

Equipment Class: (20) Instrumentation and Control Panels and Cabinets

Equipment Description: 1B DG RM HVAC DMPR START PNL

Project: Braidwood 1 SWEL

Location (Bldg, Elev, Room/Area): Auxiliary, 401.00 ft, ALL

Manufacturer/Model:

Instructions for Completing Checklist

This checklist may be used to document the results of the Seismic Walkdown of an item of equipment on the SWEL. The space below each of the following questions may be used to record the results of judgments and findings. Additional space is provided at the end of this checklist for documenting other comments.

Anchorage

1. Is anchorage configuration verification required (i.e., is the item one of the 50% of SWEL items requiring such verification)? No

2. Is the anchorage free of bent, broken, missing or loose hardware? Yes

3. Is the anchorage free of corrosion that is more than mild surface oxidation? Yes

4. Is the anchorage free of visible cracks in the concrete near the anchors? Yes

5. Is the anchorage configuration consistent with plant documentation? (Note: This question only applies if the item is one of the 50% for which an anchorage configuration verification is required.) Not Applicable

6. Based on the above anchorage evaluations, is the anchorage free of potentially adverse seismic conditions? Yes

Status: Y N U

Seismic Walkdown Checklist (SWC)

Equipment ID No.: 1VD05J

Equipment Class: (20) Instrumentation and Control Panels and Cabinets

Equipment Description: 1B DG RM HVAC DMPR START PNL

Interaction Effects

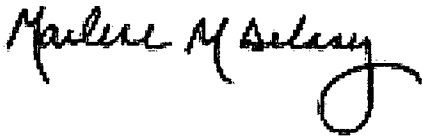
7. Are soft targets free from impact by nearby equipment or structures? Yes
8. Are overhead equipment, distribution systems, ceiling tiles and lighting, and masonry block walls not likely to collapse onto the equipment? Yes
Seismic block walls
9. Do attached lines have adequate flexibility to avoid damage? Yes
10. Based on the above seismic interaction evaluations, is equipment free of potentially adverse seismic interaction effects? Yes

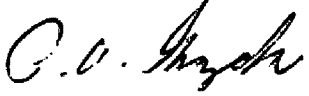
Other Adverse Conditions

11. Have you looked for and found no adverse seismic conditions that could adversely affect the safety functions of the equipment? Yes

Comments

Seismic walkdown performed week of 7/16/12 by M. Delaney & P. Gazda

Evaluated by:  Marlene Delaney Date: 10/1/2012

 Philip Gazda 10/1/2012

Status: Y N U

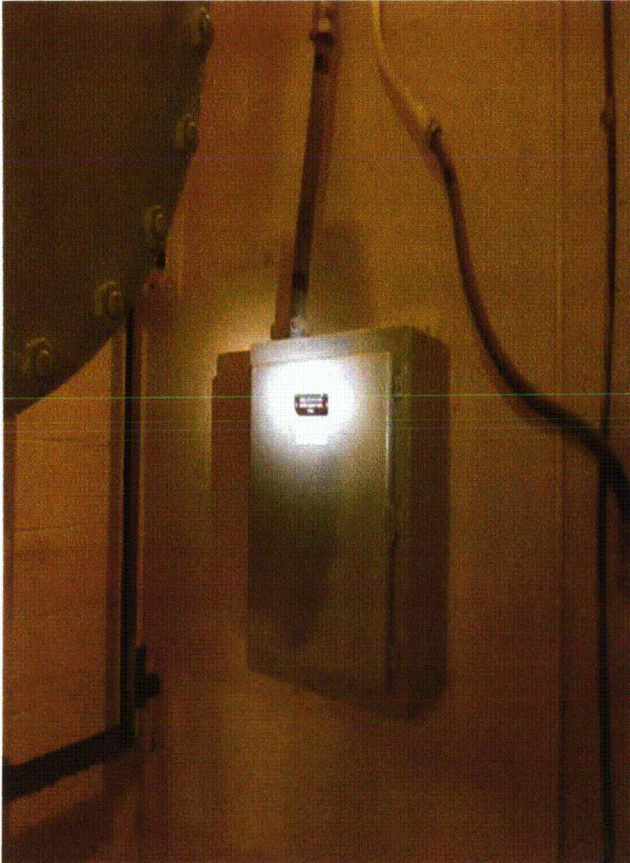
Seismic Walkdown Checklist (SWC)

Equipment ID No.: 1VD05J

Equipment Class: (20) Instrumentation and Control Panels and Cabinets

Equipment Description: 1B DG RM HVAC DMPR START PNL

Photos



1VD05J 7-16-12 087



1VD05J 7-16-12 088

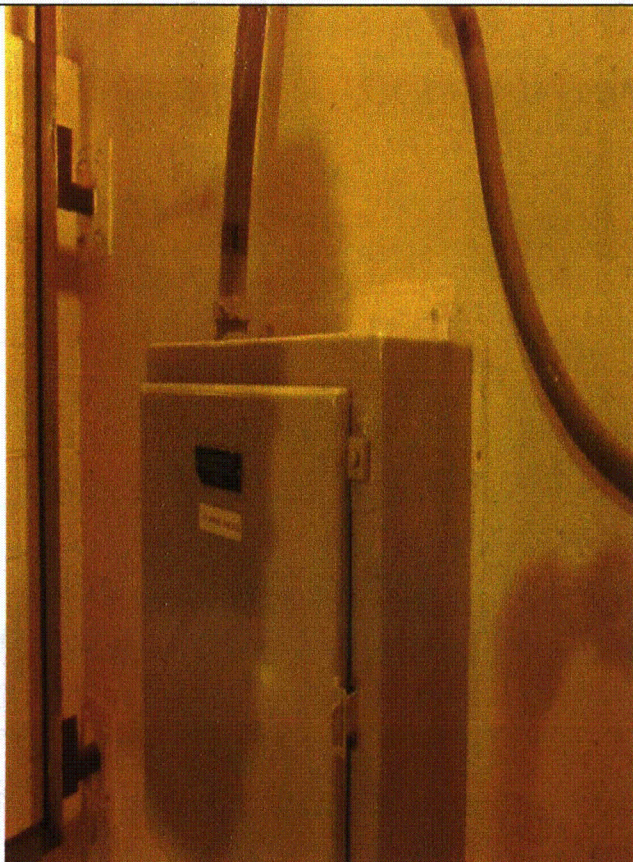
Status: Y N U

Seismic Walkdown Checklist (SWC)

Equipment ID No.: 1VD05J

Equipment Class: (20) Instrumentation and Control Panels and Cabinets

Equipment Description: 1B DG RM HVAC DMPR START PNL



1VD05J 7-16-12 089



1VD05J 7-16-12 090

Status: Y N U

Seismic Walkdown Checklist (SWC)

Equipment ID No.: 1VE05C

Equipment Class: (9) Fans

Equipment Description: ASSY - U-1 MISC ELEC EQUIP RM DIV 12 EXH FAN

Project: Braidwood 1 SWEL

Location (Bldg, Elev, Room/Area): Auxiliary, 463.00 ft, ALL

Manufacturer/Model:

Instructions for Completing Checklist

This checklist may be used to document the results of the Seismic Walkdown of an item of equipment on the SWEL. The space below each of the following questions may be used to record the results of judgments and findings. Additional space is provided at the end of this checklist for documenting other comments.

Anchorage

1. Is anchorage configuration verification required (i.e., is the item one of the 50% of SWEL items requiring such verification)? No

2. Is the anchorage free of bent, broken, missing or loose hardware? Yes

3. Is the anchorage free of corrosion that is more than mild surface oxidation? Yes

4. Is the anchorage free of visible cracks in the concrete near the anchors? Yes

5. Is the anchorage configuration consistent with plant documentation? (Note: This question only applies if the item is one of the 50% for which an anchorage configuration verification is required.) Not Applicable

6. Based on the above anchorage evaluations, is the anchorage free of potentially adverse seismic conditions? Yes
*Support configuration shown on M-1261 Sheet 9 Revision AK
Equipment is mounted at the ceiling and appears to be constructed per the drawing.*

Status: Y N U

Seismic Walkdown Checklist (SWC)

Equipment ID No.: 1VE05C

Equipment Class: (9) Fans

Equipment Description: ASSY - U-1 MISC ELEC EQUIP RM DIV 12 EXH FAN

Interaction Effects

7. Are soft targets free from impact by nearby equipment or structures? Yes
8. Are overhead equipment, distribution systems, ceiling tiles and lighting, and masonry block walls not likely to collapse onto the equipment? Yes
9. Do attached lines have adequate flexibility to avoid damage? Yes
10. Based on the above seismic interaction evaluations, is equipment free of potentially adverse seismic interaction effects? Yes

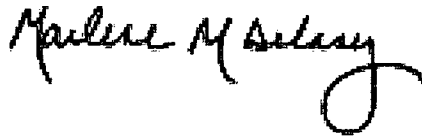
Other Adverse Conditions

11. Have you looked for and found no adverse seismic conditions that could adversely affect the safety functions of the equipment? Yes

Comments

Seismic walkdown performed week of 7/16/12 by M. Delaney & P. Gazda

Evaluated by:



Marlene Delaney

Date: 10/1/2012



Philip Gazda

10/1/2012

Status: Y N U

Seismic Walkdown Checklist (SWC)

Equipment ID No.: 1VE05C

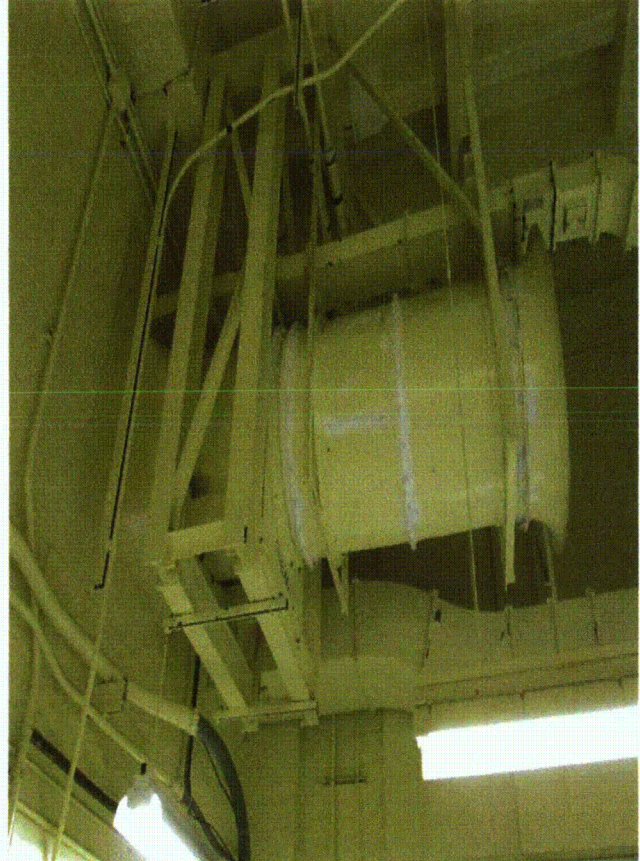
Equipment Class: (9) Fans

Equipment Description: ASSY - U-1 MISC ELEC EQUIP RM DIV 12 EXH FAN

Photos



1VE05C 7-16-12 045



1VE05C 7-16-12 046

Status: Y N U

Seismic Walkdown Checklist (SWC)

Equipment ID No.: 1VX07J

Equipment Class: (20) Instrumentation and Control Panels and Cabinets

Equipment Description: ESF SWGR RM DIV 12 HVAC DMPR START PNL

Project: Braidwood 1 SWEL

Location (Bldg, Elev, Room/Area): Auxiliary, 426.00 ft, ALL

Manufacturer/Model:

Instructions for Completing Checklist

This checklist may be used to document the results of the Seismic Walkdown of an item of equipment on the SWEL. The space below each of the following questions may be used to record the results of judgments and findings. Additional space is provided at the end of this checklist for documenting other comments.

Anchorage

1. Is anchorage configuration verification required (i.e., is the item one of the 50% of SWEL items requiring such verification)? No

2. Is the anchorage free of bent, broken, missing or loose hardware? No

At the top of the panel, only one anchor is installed. The anchors are 3/8 inch diameter. The design drawing (20E-7-3351B Detail 6502) specifies 4 - 1/4 inch diameter anchors. The 3 anchors have a larger net area than the 4 specified anchors so the one missing anchor is not an operability concern. IR 1389727 was written to track this item.

3. Is the anchorage free of corrosion that is more than mild surface oxidation? Yes

4. Is the anchorage free of visible cracks in the concrete near the anchors? Yes

5. Is the anchorage configuration consistent with plant documentation? (Note: This question only applies if the item is one of the 50% for which an anchorage configuration verification is required.) Not Applicable

Status: Y N U

Seismic Walkdown Checklist (SWC)

Equipment ID No.: 1VX07J

Equipment Class: (20) Instrumentation and Control Panels and Cabinets

Equipment Description: ESF SWGR RM DIV 12 HVAC DMPR START PNL

-
6. Based on the above anchorage evaluations, is the anchorage free of potentially adverse seismic conditions? Yes
See question 2 for explanation on acceptability.

Interaction Effects

7. Are soft targets free from impact by nearby equipment or structures? Yes
8. Are overhead equipment, distribution systems, ceiling tiles and lighting, and masonry block walls not likely to collapse onto the equipment? Yes
Equipment mounted to seismic block wall.
9. Do attached lines have adequate flexibility to avoid damage? Yes
10. Based on the above seismic interaction evaluations, is equipment free of potentially adverse seismic interaction effects? Yes

Other Adverse Conditions

11. Have you looked for and found no adverse seismic conditions that could adversely affect the safety functions of the equipment? Yes

Comments

Seismic walkdown performed week of 7/16/12 by M. Delaney & P. Gazda

Status: Y N U

Seismic Walkdown Checklist (SWC)

Equipment ID No.: 1VX07J

Equipment Class: (20) Instrumentation and Control Panels and Cabinets

Equipment Description: ESF SWGR RM DIV 12 HVAC DMPR START PNL

Marlene M Delaney

Evaluated by:

Marlene Delaney

Date: 10/1/2012

P. V. Gazda

Philip Gazda

10/1/2012

Photos



1VX07J 7-16-12 070



1VX07J 7-16-12 071

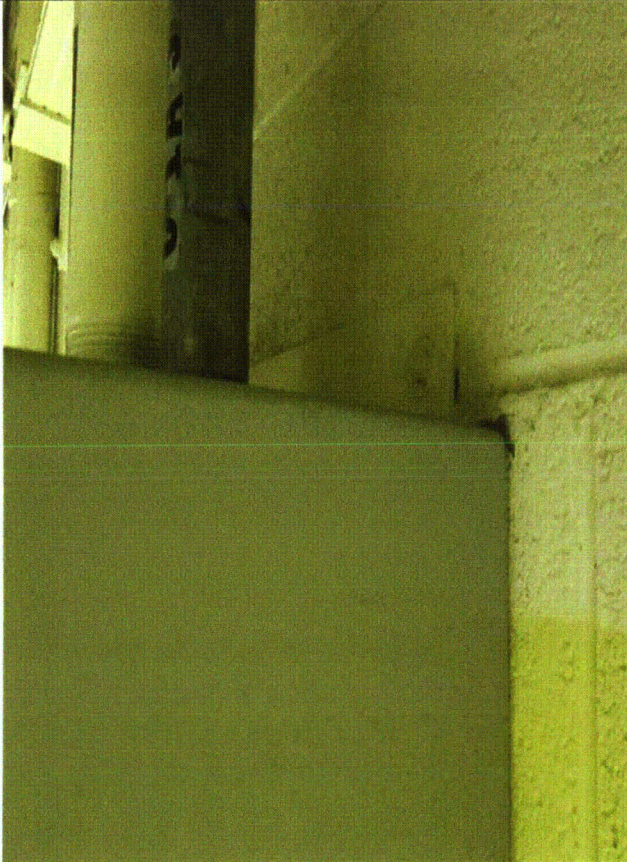
Status: Y N U

Seismic Walkdown Checklist (SWC)

Equipment ID No.: 1VX07J

Equipment Class: (20) Instrumentation and Control Panels and Cabinets

Equipment Description: ESF SWGR RM DIV 12 HVAC DMPR START PNL



1VX07J 7-16-12 072

D

Area Walk-By Checklists (AWCs)

Table D-1 provides the building, elevation, and location of each area as well as a list of SWEL items associated with each area, and page numbers of each Area Walk-By Checklist.

Table D-1. Summary of Area Walk-By Checklists

AREA WALK-BY	DESCRIPTION	COMPONENT ID	COMMENTS	PAGE
1	Aux, El. 463, (El 463 HVAC G)	0VC08Y		D- 5
2	Aux, El. 451, (Unit 1 Control Room)	1PM05J		D- 7
3	El. 451, (Unit 1 Aux Elec Equip Room)	1IP02J		D- 9
		1PA01J		
		1PA03J		
		1PA07J		
		1PA14J		
		1PA28J		
4	Aux, El. 451, (Unit 1 HVAC 0VC01AA, 0VC01JA, 0VC15J area)	1PA34J		D- 11
		0VC01AA		
		0VC01JA		
		0VC15J		
5	Aux, El. 451, (Div 11 1DC01J)	1DC10J		D- 13
6	Aux, El. 451, Division 112 battery room	1DC02E		D- 15
7	Aux, El. 451, Division 111 Battery Room	1DC01E		D- 17
8	Aux, El. 451, MEER Room (1VE05C, 1IP02E,)	1DC04E		D- 19
		1DC06E		
		1DC11J		
		1IP02E		
		1IP06E		
		1IP08E		
9	Aux, El. 426, ESF SW (1AP10E, 1AP11E)	1VE05C		D- 21
		1AP10E	OUTAGE FOR ANCHORAGE	
10	Aux, El. 426, (ESF SW 1AP12E, 1VX07J)	1AP11E		D- 23
		1AP12E	OUTAGE FOR ANCHORAGE	
11	Aux, El. 401, Diesel Room 1B	1VX07J		D- 25
		1DG01KB		
		1PL08J		
		1SX169B		
		1VD01CB		
12	Aux, El. 373, (Diesel Oil Storage Tank Room 1DO01TB)	1VD05J		D- 27
13	Aux, El. 401, (Unit 1 MSIV 1MS018A)	1DO01TB		D- 29
14	Aux, El. 401, (Unit 1 MSIV (B) 1MS018B)	1MS018A		D- 31
15	Aux, El. 401, RWST (outside)	1MS018B		D- 33
16	Aux, El. 377, (MS- 1MS001A, 1PT-0516)	1SI01T		D- 35
		1MS001A		
17	Aux, El. 330, (Area 5-1AP27E)	1PT-0516		D- 37
		1AP27E		D- 37

AREA WALK-BY	DESCRIPTION	COMPONENT ID	COMMENTS	PAGE
18	Aux, El. 383, (Diesel Oil Day Tank area 1DO10T)	1DO10T		D- 39
19	Aux, El. 383, (1B Aux Feedpump Room)	1AF006B		D- 41
		1AF017B		
		1AF01EA-A		
		1AF01EB-A		
		1AF01PB		
		1AF01PB-A		
		1AF01EB-B		
		1AF01PB-K		
		1AF024		
		1SX173		
1VA08CB				
20	Aux, El. 383, (1AP22E and 1AP24E area)	1AP22E		D- 43
		1AP24E		
21	Aux, El. 383, (1FT-0132 Area (near U-18))	1FT-0132		D- 45
22	Aux, El. 330, (OWO01CB area)	0WO01CB		D- 47
23	Aux, El. 364, (1AF005E and 1FT-AF014 area)	1AF005E		D- 49
		1FT-AF014		
24	Aux, El. 364, (1CC01PB area)	1CC01PB		D- 51
25	Aux, El. 364, (1FT-0121 area)	1FT-0121		D- 53
26	Aux, El. 346, (0SX147 area (P-21 through P-23))	0SX147		D- 55
27	Aux, El. 330, (Column P-11 1AP38E area)	1AP38E		D- 57
28	Aux, El. 330, (SX B Pump area 1SX01FB,1SX01PB,1SX01PB-C,1VA01SB,1SX005)	1SX005		D- 59
		1SX01FB		
		1SX01PB		
		1SX01PB-C		
		1VA01SB		
29	Aux, El. 330, (1SX004 area)	1SX004		D- 61
30	Fuel Handling, El. 401, (adjacent to truck bay)	1PI-0633		D- 63
		1TI-0628		
31	Aux, El. 364, (0PI-FC003 and 5 area)	0PI-FC003		D- 65
		0PI-FC005		
32	Fuel Handling, El. 426	0TIS-0626		D- 67

AREA WALK-BY	DESCRIPTION	COMPONENT ID	COMMENTS	PAGE
33/34	Fuel Handling, El. 401, (HX and Pump Room (work with Area 34))	0FC8754		D- 69
		1FC8756		
		1FC8762A		
		1FC8762B		
		1FC8793		
		1FC8794		
		1PI-0627		
		0TI-FC007		
		1FC01A		
		1FC01P		
		1HS-FC001		
35	Aux, El. 330, (1B RH-1RH01PB,1VA02SB,1RH01PB-A)	1RH01PB		D- 73
		1RH01PB-A		
		1VA02SB		
36	Aux, El. 357, (1B RHR - 1RH607)	1RH607		D- 75
37	Aux, El. 364, (1A CV - 1VA06SA)	1VA06SA		D- 77
38	Aux, El. 364, (1SI8804B area)	1SI8804B		D- 79
39	Aux, El. 379, (RWST tunnel 1LT-0932)	1LT-0932		D- 81
40	Aux, El. 364, (1B CV - 1CV01PB,1VA11J, 1CV02SB)	1CV01PB		D- 83
		1CV02SB		
		1VA11J		
41	Aux, El. 364, (work with Area Walk-by 42)	1AP21E		D- 85
		1TE-0604		
		0FC8763		
		1FC8766		
		0FC03PA		
42	Aux, El. 364, (U1 AR (work with Area 41) 1CV112E, 1CV112D, 1FC8758)	1CV112D		D- 87
		1CV112E		
		1FC8758		
43	Aux, El. 364, (Curved wall (closest to MCC) 1CC685, 1CV8355A, 1FC010)	1CC685		D- 89
		1CV8355A		
		1FC010		
44	Aux, El. 364, (Curved Wall 1SI8801B,1SI8809B)	1SI8801B		D- 91
		1SI8809B		
45	Aux, El. 451, (OBVC Room)	0VC01FB		D- 93
		0VC09Y		

Status: Y N U

Area Walk-By Checklist (AWC)

Location (Bldg, Elev, Room/Area): Area Walk-by 01

Instructions for Completing Checklist

This checklist may be used to document the results of the Area Walk-By near one or more SWEL items. The space below each of the following questions may be used to record the results of judgments and findings. Additional space is provided at the end of this checklist for documenting other comments.

1. Does anchorage of equipment in the area appear to be free of potentially adverse seismic conditions (if visible without necessarily opening cabinets)? Yes
Welded anchorage details.

 2. Does anchorage of equipment in the area appear to be free of significant degraded conditions? Yes

 3. Based on a visual inspection from the floor, do the cable/conduit raceways and HVAC ducting appear to be free of potentially adverse seismic conditions (e.g., condition of supports is adequate and fill conditions of cable trays appear to be inside acceptable limits)? Yes

 4. Does it appear that the area is free of potentially adverse seismic spatial interactions with other equipment in the area (e.g., ceiling tiles and lighting)? Yes

 5. Does it appear that the area is free of potentially adverse seismic interactions that could cause flooding or spray in the area? Yes
Sprinkler piping is well supported. Roof drain piping has Victaulic couplings but is well supported in 3 directions.

 6. Does it appear that the area is free of potentially adverse seismic interactions that could cause a fire in the area? Yes

 7. Does it appear that the area is free of potentially adverse seismic interactions associated with housekeeping practices, storage of portable equipment, and temporary installations (e.g., scaffolding, lead shielding)? Yes
-

Status: Y N U

Area Walk-By Checklist (AWC)

Location (Bldg, Elev, Room/Area): Area Walk-by 01

8. Have you looked for and found no other seismic conditions that could adversely affect the safety functions of the equipment in the area? Yes

Comments

Seismic walkdown performed week of 7/16/12 by M. Delaney & P. Gazda

Aux, EI 463 (EI 463 HVAC G)

Marlene M. Delaney

Evaluated by:

Marlene Delaney

Date: 10/1/2012

P. O. Gazda

Philip Gazda

10/1/2012

Photos

None.

Status: Y N U

Area Walk-By Checklist (AWC)

Location (Bldg, Elev, Room/Area): Area Walk-by 02

Instructions for Completing Checklist

This checklist may be used to document the results of the Area Walk-By near one or more SWEL items. The space below each of the following questions may be used to record the results of judgments and findings. Additional space is provided at the end of this checklist for documenting other comments.

1. Does anchorage of equipment in the area appear to be free of potentially adverse seismic conditions (if visible without necessarily opening cabinets)? Yes
All components well-anchored.

 2. Does anchorage of equipment in the area appear to be free of significant degraded conditions? Yes

 3. Based on a visual inspection from the floor, do the cable/conduit raceways and HVAC ducting appear to be free of potentially adverse seismic conditions (e.g., condition of supports is adequate and fill conditions of cable trays appear to be inside acceptable limits)? Yes

 4. Does it appear that the area is free of potentially adverse seismic spatial interactions with other equipment in the area (e.g., ceiling tiles and lighting)? Yes
The ceiling tiles are light weight and would not damage equipment if they were to fall. Not an adverse seismic interaction. Identified as an IPEEE vulnerability. Resolution verification is required.

 5. Does it appear that the area is free of potentially adverse seismic interactions that could cause flooding or spray in the area? Yes

 6. Does it appear that the area is free of potentially adverse seismic interactions that could cause a fire in the area? Yes

 7. Does it appear that the area is free of potentially adverse seismic interactions associated with housekeeping practices, storage of portable equipment, and temporary installations (e.g., scaffolding, lead shielding)? Yes
-

Status: Y N U

Area Walk-By Checklist (AWC)

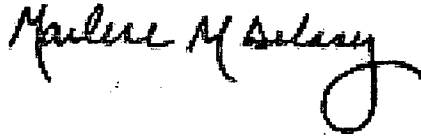
Location (Bldg, Elev, Room/Area): Area Walk-by 02

8. Have you looked for and found no other seismic conditions that could adversely affect the safety functions of the equipment in the area? Yes

Comments

Seismic walkdown performed week of 7/16/12 by M. Delaney & P. Gazda

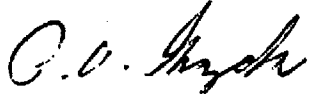
Aux, El. 451, (Unit 1 Control Room)



Evaluated by:

Marlene Delaney

Date: 10/1/2012



Philip Gazda

10/1/2012

Photos

None.

Status: Y N U

Area Walk-By Checklist (AWC)

Location (Bldg, Elev, Room/Area): Area Walk-by 03

Instructions for Completing Checklist

This checklist may be used to document the results of the Area Walk-By near one or more SWEL items. The space below each of the following questions may be used to record the results of judgments and findings. Additional space is provided at the end of this checklist for documenting other comments.

1. Does anchorage of equipment in the area appear to be free of potentially adverse seismic conditions (if visible without necessarily opening cabinets)? Yes

 2. Does anchorage of equipment in the area appear to be free of significant degraded conditions? Yes

 3. Based on a visual inspection from the floor, do the cable/conduit raceways and HVAC ducting appear to be free of potentially adverse seismic conditions (e.g., condition of supports is adequate and fill conditions of cable trays appear to be inside acceptable limits)? Yes

 4. Does it appear that the area is free of potentially adverse seismic spatial interactions with other equipment in the area (e.g., ceiling tiles and lighting)? Yes
Temporary test cabinet located near Column N-12 is not properly anchored (shims skewed) and tied off with a rope. IR 1389428 generated on 7/16/12. No impact on operations.

No bulb guards on lights but if the lights fell they would not damage equipment. S&L Standard EE-103 does not require guards on fluorescent fixtures.

Fire extinguisher is well-supported.

Cabinets 1PA12J and 1PA54J have a gap between them (approximately 3/4"). Braidwood Calculation BRW-99-0318-E specifies the movement of the two cabinets as equal to 0.149" therefore it is acceptable.
 5. Does it appear that the area is free of potentially adverse seismic interactions that could cause flooding or spray in the area? Yes
-

Status: Y N U

Area Walk-By Checklist (AWC)

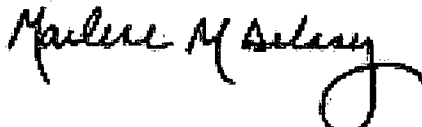
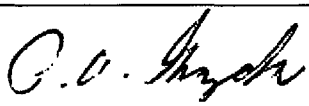
Location (Bldg, Elev, Room/Area): Area Walk-by 03

-
- | | | |
|------|---|-----|
| 6. | Does it appear that the area is free of potentially adverse seismic interactions that could cause a fire in the area? | Yes |
|
 | | |
| 7. | Does it appear that the area is free of potentially adverse seismic interactions associated with housekeeping practices, storage of portable equipment, and temporary installations (e.g., scaffolding, lead shielding)? | Yes |
|
 | | |
| 8. | Have you looked for and found no other seismic conditions that could adversely affect the safety functions of the equipment in the area?
<i>Cabinet 1PA12J and 1PA54J are not bolted together however they are robust and stiff and will not interact. Braidwood calculation BRW-99-0318-E calculates required gap between cabinets of 0.149". Actual gap approximately 3/4" - acceptable.</i> | Yes |
-

Comments

Seismic walkdown performed week of 7/16/12 by M. Delaney & P. Gazda

El. 451 (Unit 1 Aux Elec Equip Room)

Evaluated by:		Date:	10/1/2012
	Marlene Delaney		
			10/1/2012
	Philip Gazda		

Photos

None.

Status: Y N U

Area Walk-By Checklist (AWC)

Location (Bldg, Elev, Room/Area): Area Walk-by 04

Instructions for Completing Checklist

This checklist may be used to document the results of the Area Walk-By near one or more SWEL items. The space below each of the following questions may be used to record the results of judgments and findings. Additional space is provided at the end of this checklist for documenting other comments.

1. Does anchorage of equipment in the area appear to be free of potentially adverse seismic conditions (if visible without necessarily opening cabinets)? Yes

 2. Does anchorage of equipment in the area appear to be free of significant degraded conditions? Yes

 3. Based on a visual inspection from the floor, do the cable/conduit raceways and HVAC ducting appear to be free of potentially adverse seismic conditions (e.g., condition of supports is adequate and fill conditions of cable trays appear to be inside acceptable limits)? Yes

 4. Does it appear that the area is free of potentially adverse seismic spatial interactions with other equipment in the area (e.g., ceiling tiles and lighting)? Yes

 5. Does it appear that the area is free of potentially adverse seismic interactions that could cause flooding or spray in the area? Yes

 6. Does it appear that the area is free of potentially adverse seismic interactions that could cause a fire in the area? Yes

 7. Does it appear that the area is free of potentially adverse seismic interactions associated with housekeeping practices, storage of portable equipment, and temporary installations (e.g., scaffolding, lead shielding)? Yes
-

Status: Y N U

Area Walk-By Checklist (AWC)

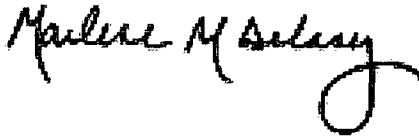
Location (Bldg, Elev, Room/Area): Area Walk-by 04

8. Have you looked for and found no other seismic conditions that could adversely affect the safety functions of the equipment in the area? Yes
Block walls are seismically supported.

Comments

Seismic walkdown performed week of 7/16/12 by M. Delaney & P. Gazda

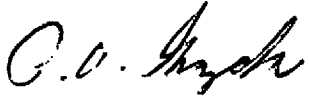
Aux, El, 451, (Unit 1 HVAC vicinity of 0VC01AA, 0VC01JA, 0VC15J area)



Evaluated by:

Marlene Delaney

Date: 10/1/2012



Philip Gazda

10/1/2012

Photos

None.

Status: Y N U

Area Walk-By Checklist (AWC)

Location (Bldg, Elev, Room/Area): Area Walk-by 05

Instructions for Completing Checklist

This checklist may be used to document the results of the Area Walk-By near one or more SWEL items. The space below each of the following questions may be used to record the results of judgments and findings. Additional space is provided at the end of this checklist for documenting other comments.

1. Does anchorage of equipment in the area appear to be free of potentially adverse seismic conditions (if visible without necessarily opening cabinets)? Yes

 2. Does anchorage of equipment in the area appear to be free of significant degraded conditions? Yes

 3. Based on a visual inspection from the floor, do the cable/conduit raceways and HVAC ducting appear to be free of potentially adverse seismic conditions (e.g., condition of supports is adequate and fill conditions of cable trays appear to be inside acceptable limits)? Yes

 4. Does it appear that the area is free of potentially adverse seismic spatial interactions with other equipment in the area (e.g., ceiling tiles and lighting)? Yes

 5. Does it appear that the area is free of potentially adverse seismic interactions that could cause flooding or spray in the area? Yes

 6. Does it appear that the area is free of potentially adverse seismic interactions that could cause a fire in the area? Yes

 7. Does it appear that the area is free of potentially adverse seismic interactions associated with housekeeping practices, storage of portable equipment, and temporary installations (e.g., scaffolding, lead shielding)? Yes
-

Status: Y N U

Area Walk-By Checklist (AWC)

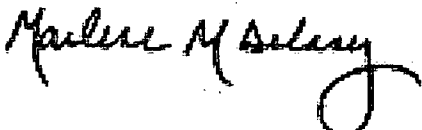
Location (Bldg, Elev, Room/Area): Area Walk-by 05

8. Have you looked for and found no other seismic conditions that could adversely affect the safety functions of the equipment in the area? Yes
Scaffold close to damper but secured to structural steel. IR 1397564 written.

Comments

Seismic walkdown performed week of 7/16/12 by M. Delaney & P. Gazda

Aux, El. 451, (Div 11 1DC10J)

Evaluated by:  Marlene Delaney Date: 10/1/2012

Evaluated by:  Philip Gazda 10/1/2012

Photos

None.

Status: Y N U

Area Walk-By Checklist (AWC)

Location (Bldg, Elev, Room/Area): Area Walk-by 06

Instructions for Completing Checklist

This checklist may be used to document the results of the Area Walk-By near one or more SWEL items. The space below each of the following questions may be used to record the results of judgments and findings. Additional space is provided at the end of this checklist for documenting other comments.

1. Does anchorage of equipment in the area appear to be free of potentially adverse seismic conditions (if visible without necessarily opening cabinets)? Yes

 2. Does anchorage of equipment in the area appear to be free of significant degraded conditions? Yes

 3. Based on a visual inspection from the floor, do the cable/conduit raceways and HVAC ducting appear to be free of potentially adverse seismic conditions (e.g., condition of supports is adequate and fill conditions of cable trays appear to be inside acceptable limits)? Yes

 4. Does it appear that the area is free of potentially adverse seismic spatial interactions with other equipment in the area (e.g., ceiling tiles and lighting)?
See SWC for 1DC02E for discussion on S-hooks Yes

 5. Does it appear that the area is free of potentially adverse seismic interactions that could cause flooding or spray in the area? Yes

 6. Does it appear that the area is free of potentially adverse seismic interactions that could cause a fire in the area? Yes

 7. Does it appear that the area is free of potentially adverse seismic interactions associated with housekeeping practices, storage of portable equipment, and temporary installations (e.g., scaffolding, lead shielding)? Yes
-

Status: Y N U

Area Walk-By Checklist (AWC)

Location (Bldg, Elev, Room/Area): Area Walk-by 06

8. Have you looked for and found no other seismic conditions that could adversely affect the safety functions of the equipment in the area? Yes

Comments

Seismic walkdown performed week of 7/16/12 by M. Delaney & P. Gazda

Aux, El. 451, Division 112 battery room

Marlene M. Delaney

Evaluated by:

Marlene Delaney

Date: 10/1/2012

P. V. Gazda

Philip Gazda

10/1/2012

Photos

None.

Status: Y N U

Area Walk-By Checklist (AWC)

Location (Bldg, Elev, Room/Area): Area Walk-by 07

Instructions for Completing Checklist

This checklist may be used to document the results of the Area Walk-By near one or more SWEL items. The space below each of the following questions may be used to record the results of judgments and findings. Additional space is provided at the end of this checklist for documenting other comments.

1. Does anchorage of equipment in the area appear to be free of potentially adverse seismic conditions (if visible without necessarily opening cabinets)? Yes

 2. Does anchorage of equipment in the area appear to be free of significant degraded conditions? Yes

 3. Based on a visual inspection from the floor, do the cable/conduit raceways and HVAC ducting appear to be free of potentially adverse seismic conditions (e.g., condition of supports is adequate and fill conditions of cable trays appear to be inside acceptable limits)? Yes

 4. Does it appear that the area is free of potentially adverse seismic spatial interactions with other equipment in the area (e.g., ceiling tiles and lighting)?
Lights with guards on chains. See SWC for 1DC01E for discussion on S-hooks. Yes

 5. Does it appear that the area is free of potentially adverse seismic interactions that could cause flooding or spray in the area? Yes

 6. Does it appear that the area is free of potentially adverse seismic interactions that could cause a fire in the area? Yes

 7. Does it appear that the area is free of potentially adverse seismic interactions associated with housekeeping practices, storage of portable equipment, and temporary installations (e.g., scaffolding, lead shielding)? Yes
-

Status: Y N U

Area Walk-By Checklist (AWC)

Location (Bldg, Elev, Room/Area): Area Walk-by 07

8. Have you looked for and found no other seismic conditions that could adversely affect the safety functions of the equipment in the area? Yes

Comments

Seismic walkdown performed week of 7/16/12 by M. Delaney & P. Gazda

Aux, El. 451, Division 111 Battery Room

Marlene M. Delaney

Evaluated by:

Marlene Delaney

Date: 10/1/2012

P. V. Gazda

Philip Gazda

10/1/2012

Photos

None.

Status: Y N U

Area Walk-By Checklist (AWC)

Location (Bldg, Elev, Room/Area): Area Walk-by 08

Instructions for Completing Checklist

This checklist may be used to document the results of the Area Walk-By near one or more SWEL items. The space below each of the following questions may be used to record the results of judgments and findings. Additional space is provided at the end of this checklist for documenting other comments.

1. Does anchorage of equipment in the area appear to be free of potentially adverse seismic conditions (if visible without necessarily opening cabinets)? Yes

 2. Does anchorage of equipment in the area appear to be free of significant degraded conditions? Yes

 3. Based on a visual inspection from the floor, do the cable/conduit raceways and HVAC ducting appear to be free of potentially adverse seismic conditions (e.g., condition of supports is adequate and fill conditions of cable trays appear to be inside acceptable limits)? Yes

 4. Does it appear that the area is free of potentially adverse seismic spatial interactions with other equipment in the area (e.g., ceiling tiles and lighting)? Yes

 5. Does it appear that the area is free of potentially adverse seismic interactions that could cause flooding or spray in the area? Yes

 6. Does it appear that the area is free of potentially adverse seismic interactions that could cause a fire in the area? Yes

 7. Does it appear that the area is free of potentially adverse seismic interactions associated with housekeeping practices, storage of portable equipment, and temporary installations (e.g., scaffolding, lead shielding)? Yes
-

Status: Y N U

Area Walk-By Checklist (AWC)

Location (Bldg, Elev, Room/Area): Area Walk-by 08

8. Have you looked for and found no other seismic conditions that could adversely affect the safety functions of the equipment in the area? Yes
Crack in south wall near Column P-10 with no significant structural impact.
Spalled concrete near Column P-10 with no structural impact.
-

Comments

Seismic walkdown performed week of 7/16/12 by M. Delaney & P. Gazda

Aux, El. 451, MEER Room

Marlene M. Delaney

Evaluated by:

Marlene Delaney

Date: 10/1/2012

P. O. Gazda

Philip Gazda

10/1/2012

Photos

None.

Status: Y N U

Area Walk-By Checklist (AWC)

Location (Bldg, Elev, Room/Area): Area Walk-by 09

Instructions for Completing Checklist

This checklist may be used to document the results of the Area Walk-By near one or more SWEL items. The space below each of the following questions may be used to record the results of judgments and findings. Additional space is provided at the end of this checklist for documenting other comments.

1. Does anchorage of equipment in the area appear to be free of potentially adverse seismic conditions (if visible without necessarily opening cabinets)? Yes

 2. Does anchorage of equipment in the area appear to be free of significant degraded conditions? Yes

 3. Based on a visual inspection from the floor, do the cable/conduit raceways and HVAC ducting appear to be free of potentially adverse seismic conditions (e.g., condition of supports is adequate and fill conditions of cable trays appear to be inside acceptable limits)? Yes

 4. Does it appear that the area is free of potentially adverse seismic spatial interactions with other equipment in the area (e.g., ceiling tiles and lighting)? Yes
Lights are rod hung with no guards but would not damage equipment if they fell.

 5. Does it appear that the area is free of potentially adverse seismic interactions that could cause flooding or spray in the area? Yes

 6. Does it appear that the area is free of potentially adverse seismic interactions that could cause a fire in the area? Yes

 7. Does it appear that the area is free of potentially adverse seismic interactions associated with housekeeping practices, storage of portable equipment, and temporary installations (e.g., scaffolding, lead shielding)? Yes
-

Status: Y N U

Area Walk-By Checklist (AWC)

Location (Bldg, Elev, Room/Area): Area Walk-by 09

8. Have you looked for and found no other seismic conditions that could adversely affect the safety functions of the equipment in the area? Yes

Comments

Seismic walkdown performed week of 7/16/12 by M. Delaney & P. Gazda

Aux, El. 426, ESF SW (1AP10E, 1AP11E)

Marlene M. Delaney

Evaluated by:

Marlene Delaney

Date: 10/1/2012

P. O. Gazda

Philip Gazda

10/1/2012

Photos

None.

Status: Y N U

Area Walk-By Checklist (AWC)

Location (Bldg, Elev, Room/Area): Area Walk-by 10

Instructions for Completing Checklist

This checklist may be used to document the results of the Area Walk-By near one or more SWEL items. The space below each of the following questions may be used to record the results of judgments and findings. Additional space is provided at the end of this checklist for documenting other comments.

1. Does anchorage of equipment in the area appear to be free of potentially adverse seismic conditions (if visible without necessarily opening cabinets)? Yes

 2. Does anchorage of equipment in the area appear to be free of significant degraded conditions? Yes

 3. Based on a visual inspection from the floor, do the cable/conduit raceways and HVAC ducting appear to be free of potentially adverse seismic conditions (e.g., condition of supports is adequate and fill conditions of cable trays appear to be inside acceptable limits)? Yes

 4. Does it appear that the area is free of potentially adverse seismic spatial interactions with other equipment in the area (e.g., ceiling tiles and lighting)?
Rod hung lights with no guards but would not damage equipment if they fell Yes

 5. Does it appear that the area is free of potentially adverse seismic interactions that could cause flooding or spray in the area? Yes

 6. Does it appear that the area is free of potentially adverse seismic interactions that could cause a fire in the area? Yes

 7. Does it appear that the area is free of potentially adverse seismic interactions associated with housekeeping practices, storage of portable equipment, and temporary installations (e.g., scaffolding, lead shielding)? Yes
-

Status: Y N U

Area Walk-By Checklist (AWC)

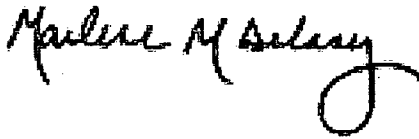
Location (Bldg, Elev, Room/Area): Area Walk-by 10

8. Have you looked for and found no other seismic conditions that could adversely affect the safety functions of the equipment in the area? Yes
Seismic block walls in area.

Comments

Seismic walkdown performed week of 7/16/12 by M. Delaney & P. Gazda

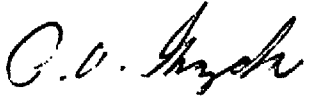
Aux, El. 426, (ESF SW 1AP12E,1VX07J)



Evaluated by:

Marlene Delaney

Date: 10/1/2012



Philip Gazda

10/1/2012

Photos

None.

Status: Y N U

Area Walk-By Checklist (AWC)

Location (Bldg, Elev, Room/Area): Area Walk-by 11

Instructions for Completing Checklist

This checklist may be used to document the results of the Area Walk-By near one or more SWEL items. The space below each of the following questions may be used to record the results of judgments and findings. Additional space is provided at the end of this checklist for documenting other comments.

1. Does anchorage of equipment in the area appear to be free of potentially adverse seismic conditions (if visible without necessarily opening cabinets)? Yes
Heat exchanger skid has a lack of full thread engagement as indicated on Drawing M-1222 Sheet 11 Revision D (See 1DG01KB for photos)

 2. Does anchorage of equipment in the area appear to be free of significant degraded conditions? Yes

 3. Based on a visual inspection from the floor, do the cable/conduit raceways and HVAC ducting appear to be free of potentially adverse seismic conditions (e.g., condition of supports is adequate and fill conditions of cable trays appear to be inside acceptable limits)? Yes

 4. Does it appear that the area is free of potentially adverse seismic spatial interactions with other equipment in the area (e.g., ceiling tiles and lighting)? Yes
Chained phone cabinet on wheels. No seismic interaction concern.

 5. Does it appear that the area is free of potentially adverse seismic interactions that could cause flooding or spray in the area? Yes

 6. Does it appear that the area is free of potentially adverse seismic interactions that could cause a fire in the area? Yes

 7. Does it appear that the area is free of potentially adverse seismic interactions associated with housekeeping practices, storage of portable equipment, and temporary installations (e.g., scaffolding, lead shielding)? Yes
-

Status: Y N U

Area Walk-By Checklist (AWC)

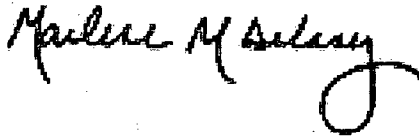
Location (Bldg, Elev, Room/Area): Area Walk-by 11

8. Have you looked for and found no other seismic conditions that could adversely affect the safety functions of the equipment in the area? Yes

Comments

Seismic walkdown performed week of 7/16/12 by M. Delaney & P. Gazda

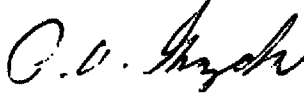
Aux, El. 401, Diesel Room 1B (1SX169B,1VD01CB,1DG01KB,1PL08J, 1VD05J)



Evaluated by:

Marlene Delaney

Date: 10/1/2012



Philip Gazda

10/1/2012

Photos

None.

Status: Y N U

Area Walk-By Checklist (AWC)

Location (Bldg, Elev, Room/Area): Area Walk-by 12

Instructions for Completing Checklist

This checklist may be used to document the results of the Area Walk-By near one or more SWEL items. The space below each of the following questions may be used to record the results of judgments and findings. Additional space is provided at the end of this checklist for documenting other comments.

1. Does anchorage of equipment in the area appear to be free of potentially adverse seismic conditions (if visible without necessarily opening cabinets)? Yes

 2. Does anchorage of equipment in the area appear to be free of significant degraded conditions? Yes

 3. Based on a visual inspection from the floor, do the cable/conduit raceways and HVAC ducting appear to be free of potentially adverse seismic conditions (e.g., condition of supports is adequate and fill conditions of cable trays appear to be inside acceptable limits)? Yes

 4. Does it appear that the area is free of potentially adverse seismic spatial interactions with other equipment in the area (e.g., ceiling tiles and lighting)? Yes

 5. Does it appear that the area is free of potentially adverse seismic interactions that could cause flooding or spray in the area? Yes

 6. Does it appear that the area is free of potentially adverse seismic interactions that could cause a fire in the area? Yes

 7. Does it appear that the area is free of potentially adverse seismic interactions associated with housekeeping practices, storage of portable equipment, and temporary installations (e.g., scaffolding, lead shielding)? Yes
-

Status: Y N U

Area Walk-By Checklist (AWC)

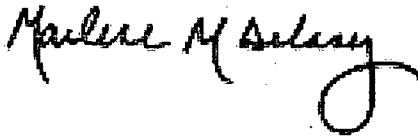
Location (Bldg, Elev, Room/Area): Area Walk-by 12

8. Have you looked for and found no other seismic conditions that could adversely affect the safety functions of the equipment in the area? Yes
Hairline cracks found at anchors for Tank 1DO01TB and TD. The cracks are in the foundation pad and do not extend to the base slab. See IR 1389743 and 1389755. Not an operability and/or seismic issue. No action required.
-

Comments

Seismic walkdown performed week of 7/16/12 by M. Delaney & P. Gazda

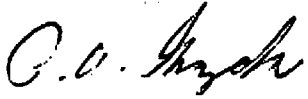
Aux, El. 373, (Diesel Oil Storage Tank Room 1DO01TB)



Evaluated by:

Marlene Delaney

Date: 10/1/2012



Philip Gazda

10/1/2012

Photos

None.

Status: Y N U

Area Walk-By Checklist (AWC)

Location (Bldg, Elev, Room/Area): Area Walk-by 13

Instructions for Completing Checklist

This checklist may be used to document the results of the Area Walk-By near one or more SWEL items. The space below each of the following questions may be used to record the results of judgments and findings. Additional space is provided at the end of this checklist for documenting other comments.

1. Does anchorage of equipment in the area appear to be free of potentially adverse seismic conditions (if visible without necessarily opening cabinets)? Yes

 2. Does anchorage of equipment in the area appear to be free of significant degraded conditions? Yes

 3. Based on a visual inspection from the floor, do the cable/conduit raceways and HVAC ducting appear to be free of potentially adverse seismic conditions (e.g., condition of supports is adequate and fill conditions of cable trays appear to be inside acceptable limits)? Yes

 4. Does it appear that the area is free of potentially adverse seismic spatial interactions with other equipment in the area (e.g., ceiling tiles and lighting)? Yes

 5. Does it appear that the area is free of potentially adverse seismic interactions that could cause flooding or spray in the area? Yes

 6. Does it appear that the area is free of potentially adverse seismic interactions that could cause a fire in the area? Yes
-

Status: Y N U

Area Walk-By Checklist (AWC)

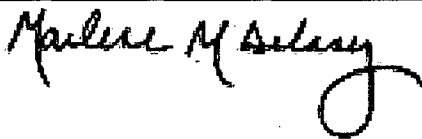
Location (Bldg, Elev, Room/Area): Area Walk-by 13


-
7. Does it appear that the area is free of potentially adverse seismic interactions associated with housekeeping practices, storage of portable equipment, and temporary installations (e.g., scaffolding, lead shielding)? Yes
Ladder on ground however equipment in area is robust and would not be damaged. Scaffolding in area is well-secured.
8. Have you looked for and found no other seismic conditions that could adversely affect the safety functions of the equipment in the area? Yes

Comments

Seismic walkdown performed week of 7/16/12 by M. Delaney & P. Gazda

Aux, El. 401 (Unit 1 MSIV 1MS018A)

Evaluated by:  Marlene Delaney Date: 10/1/2012

 Philip Gazda 10/1/2012

Photos

None.

Status: Y N U

Area Walk-By Checklist (AWC)

Location (Bldg, Elev, Room/Area): Area Walk-by 14

Instructions for Completing Checklist

This checklist may be used to document the results of the Area Walk-By near one or more SWEL items. The space below each of the following questions may be used to record the results of judgments and findings. Additional space is provided at the end of this checklist for documenting other comments.

1. Does anchorage of equipment in the area appear to be free of potentially adverse seismic conditions (if visible without necessarily opening cabinets)? Yes

 2. Does anchorage of equipment in the area appear to be free of significant degraded conditions? Yes

 3. Based on a visual inspection from the floor, do the cable/conduit raceways and HVAC ducting appear to be free of potentially adverse seismic conditions (e.g., condition of supports is adequate and fill conditions of cable trays appear to be inside acceptable limits)? Yes

 4. Does it appear that the area is free of potentially adverse seismic spatial interactions with other equipment in the area (e.g., ceiling tiles and lighting)? Yes

 5. Does it appear that the area is free of potentially adverse seismic interactions that could cause flooding or spray in the area? Yes

 6. Does it appear that the area is free of potentially adverse seismic interactions that could cause a fire in the area? Yes
-

Status: Y N U

Area Walk-By Checklist (AWC)

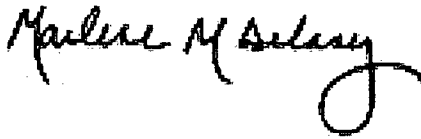
Location (Bldg, Elev, Room/Area): Area Walk-by 14

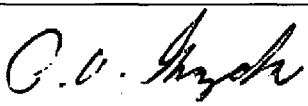
-
7. Does it appear that the area is free of potentially adverse seismic interactions associated with housekeeping practices, storage of portable equipment, and temporary installations (e.g., scaffolding, lead shielding)? Yes
Scaffolding tied off and secure.
8. Have you looked for and found no other seismic conditions that could adversely affect the safety functions of the equipment in the area? Yes
Equipment in room very robust.

Comments

Seismic walkdown performed week of 7/16/12 by M. Delaney & P. Gazda

Aux, El. 401 (Unit 1 MSIV (B) 1MS018B)

Evaluated by:  Marlene Delaney Date: 10/1/2012

 Philip Gazda 10/1/2012

Photos

None.

Status: Y N U

Area Walk-By Checklist (AWC)

Location (Bldg, Elev, Room/Area): Area Walk-by 15

Instructions for Completing Checklist

This checklist may be used to document the results of the Area Walk-By near one or more SWEL items. The space below each of the following questions may be used to record the results of judgments and findings. Additional space is provided at the end of this checklist for documenting other comments.

1. Does anchorage of equipment in the area appear to be free of potentially adverse seismic conditions (if visible without necessarily opening cabinets)? Yes

 2. Does anchorage of equipment in the area appear to be free of significant degraded conditions? Yes

 3. Based on a visual inspection from the floor, do the cable/conduit raceways and HVAC ducting appear to be free of potentially adverse seismic conditions (e.g., condition of supports is adequate and fill conditions of cable trays appear to be inside acceptable limits)? Yes

 4. Does it appear that the area is free of potentially adverse seismic spatial interactions with other equipment in the area (e.g., ceiling tiles and lighting)? Yes

 5. Does it appear that the area is free of potentially adverse seismic interactions that could cause flooding or spray in the area? Yes

 6. Does it appear that the area is free of potentially adverse seismic interactions that could cause a fire in the area? Yes

 7. Does it appear that the area is free of potentially adverse seismic interactions associated with housekeeping practices, storage of portable equipment, and temporary installations (e.g., scaffolding, lead shielding)? Yes
-

Status: Y N U

Area Walk-By Checklist (AWC)

Location (Bldg, Elev, Room/Area): Area Walk-by 15

8. Have you looked for and found no other seismic conditions that could adversely affect the safety functions of the equipment in the area? Yes
Tank is outside and very robust.

Comments

Seismic walkdown performed week of 7/16/12 by M. Delaney & P. Gazda

Aux, El. 401 RWST (outside)

Marlene M Delaney

Evaluated by:

Marlene Delaney

Date: 10/1/2012

P. P. Gazda

Philip Gazda

10/1/2012

Photos

None.

Status: Y N U

Area Walk-By Checklist (AWC)

Location (Bldg, Elev, Room/Area): Area Walk-by 16

Instructions for Completing Checklist

This checklist may be used to document the results of the Area Walk-By near one or more SWEL items. The space below each of the following questions may be used to record the results of judgments and findings. Additional space is provided at the end of this checklist for documenting other comments.

1. Does anchorage of equipment in the area appear to be free of potentially adverse seismic conditions (if visible without necessarily opening cabinets)? Yes

 2. Does anchorage of equipment in the area appear to be free of significant degraded conditions? Yes

 3. Based on a visual inspection from the floor, do the cable/conduit raceways and HVAC ducting appear to be free of potentially adverse seismic conditions (e.g., condition of supports is adequate and fill conditions of cable trays appear to be inside acceptable limits)? Yes

 4. Does it appear that the area is free of potentially adverse seismic spatial interactions with other equipment in the area (e.g., ceiling tiles and lighting)? Yes

 5. Does it appear that the area is free of potentially adverse seismic interactions that could cause flooding or spray in the area? Yes

 6. Does it appear that the area is free of potentially adverse seismic interactions that could cause a fire in the area? Yes
-

Status: Y N U

Area Walk-By Checklist (AWC)

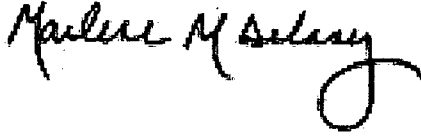
Location (Bldg, Elev, Room/Area): Area Walk-by 16

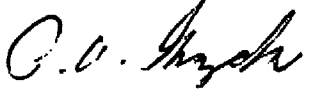
-
7. Does it appear that the area is free of potentially adverse seismic interactions associated with housekeeping practices, storage of portable equipment, and temporary installations (e.g., scaffolding, lead shielding)? Yes
Permanent scaffolding in area is secure and tied off.
8. Have you looked for and found no other seismic conditions that could adversely affect the safety functions of the equipment in the area? Yes

Comments

Seismic walkdown performed week of 7/16/12 by M. Delaney & P. Gazda

Aux, El. 377 (vicinity of 1MS001A, 1PT-0516)

Evaluated by:  Marlene Delaney Date: 10/1/2012

 Philip Gazda 10/1/2012

Photos

None.

Status: Y N U

Area Walk-By Checklist (AWC)

Location (Bldg, Elev, Room/Area): Area Walk-by 17

Instructions for Completing Checklist

This checklist may be used to document the results of the Area Walk-By near one or more SWEL items. The space below each of the following questions may be used to record the results of judgments and findings. Additional space is provided at the end of this checklist for documenting other comments.

1. Does anchorage of equipment in the area appear to be free of potentially adverse seismic conditions (if visible without necessarily opening cabinets)? Yes

 2. Does anchorage of equipment in the area appear to be free of significant degraded conditions? Yes

 3. Based on a visual inspection from the floor, do the cable/conduit raceways and HVAC ducting appear to be free of potentially adverse seismic conditions (e.g., condition of supports is adequate and fill conditions of cable trays appear to be inside acceptable limits)? Yes
Cable trays and other overhead components are well-supported.

 4. Does it appear that the area is free of potentially adverse seismic spatial interactions with other equipment in the area (e.g., ceiling tiles and lighting)? Yes

 5. Does it appear that the area is free of potentially adverse seismic interactions that could cause flooding or spray in the area? Yes

 6. Does it appear that the area is free of potentially adverse seismic interactions that could cause a fire in the area? Yes

 7. Does it appear that the area is free of potentially adverse seismic interactions associated with housekeeping practices, storage of portable equipment, and temporary installations (e.g., scaffolding, lead shielding)? Yes
-

Status: Y N U

Area Walk-By Checklist (AWC)

Location (Bldg, Elev, Room/Area): Area Walk-by 17

8. Have you looked for and found no other seismic conditions that could adversely affect the safety functions of the equipment in the area? Yes

Comments

Seismic walkdown performed week of 7/16/12 by M. Delaney & P. Gazda

Aux, El. 330 (Area 5-1AP27E)

Marlene M. Delaney

Evaluated by:

Marlene Delaney

Date: 10/1/2012

P. O. Gazda

Philip Gazda

10/1/2012

Photos

None.

Status: Y N U

Area Walk-By Checklist (AWC)

Location (Bldg, Elev, Room/Area): Area Walk-by 18

Instructions for Completing Checklist

This checklist may be used to document the results of the Area Walk-By near one or more SWEL items. The space below each of the following questions may be used to record the results of judgments and findings. Additional space is provided at the end of this checklist for documenting other comments.

1. Does anchorage of equipment in the area appear to be free of potentially adverse seismic conditions (if visible without necessarily opening cabinets)? Yes

 2. Does anchorage of equipment in the area appear to be free of significant degraded conditions? Yes

 3. Based on a visual inspection from the floor, do the cable/conduit raceways and HVAC ducting appear to be free of potentially adverse seismic conditions (e.g., condition of supports is adequate and fill conditions of cable trays appear to be inside acceptable limits)? Yes

 4. Does it appear that the area is free of potentially adverse seismic spatial interactions with other equipment in the area (e.g., ceiling tiles and lighting)? Yes

 5. Does it appear that the area is free of potentially adverse seismic interactions that could cause flooding or spray in the area? Yes

 6. Does it appear that the area is free of potentially adverse seismic interactions that could cause a fire in the area? Yes

 7. Does it appear that the area is free of potentially adverse seismic interactions associated with housekeeping practices, storage of portable equipment, and temporary installations (e.g., scaffolding, lead shielding)? Yes
-

Status: Y N U

Area Walk-By Checklist (AWC)

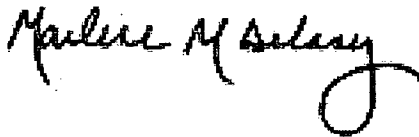
Location (Bldg, Elev, Room/Area): Area Walk-by 18

8. Have you looked for and found no other seismic conditions that could adversely affect the safety functions of the equipment in the area? Yes
Small room with few components. Hairline cracking in fire protection at ceiling. No impact.
-

Comments

Seismic walkdown performed week of 7/16/12 by M. Delaney & P. Gazda

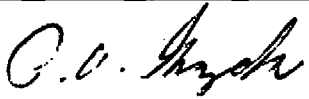
Aux, El. 383 (Diesel Oil Day Tank area 1DO10T)



Evaluated by:

Marlene Delaney

Date: 10/1/2012



Philip Gazda

10/1/2012

Photos

None.

Status: Y N U

Area Walk-By Checklist (AWC)

Location (Bldg, Elev, Room/Area): Area Walk-by 19

Instructions for Completing Checklist

This checklist may be used to document the results of the Area Walk-By near one or more SWEL items. The space below each of the following questions may be used to record the results of judgments and findings. Additional space is provided at the end of this checklist for documenting other comments.

1. Does anchorage of equipment in the area appear to be free of potentially adverse seismic conditions (if visible without necessarily opening cabinets)? Yes

 2. Does anchorage of equipment in the area appear to be free of significant degraded conditions? Yes

 3. Based on a visual inspection from the floor, do the cable/conduit raceways and HVAC ducting appear to be free of potentially adverse seismic conditions (e.g., condition of supports is adequate and fill conditions of cable trays appear to be inside acceptable limits)? Yes

 4. Does it appear that the area is free of potentially adverse seismic spatial interactions with other equipment in the area (e.g., ceiling tiles and lighting)? Yes

 5. Does it appear that the area is free of potentially adverse seismic interactions that could cause flooding or spray in the area? Yes
Fire protection line in area is rugged and well-supported.

 6. Does it appear that the area is free of potentially adverse seismic interactions that could cause a fire in the area? Yes
Rugged fuel line in area is well-supported. Vertical sight glass is rugged and acceptable.
-

Status: Y N U

Area Walk-By Checklist (AWC)

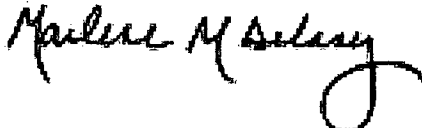
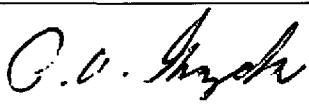
Location (Bldg, Elev, Room/Area): Area Walk-by 19

-
- | | | |
|------|---|-----|
| 7. | Does it appear that the area is free of potentially adverse seismic interactions associated with housekeeping practices, storage of portable equipment, and temporary installations (e.g., scaffolding, lead shielding)?
<i>Scaffolding in area is missing tag but is well-supported with no seismic interaction concerns.</i> | Yes |
|
 | | |
| 8. | Have you looked for and found no other seismic conditions that could adversely affect the safety functions of the equipment in the area? | Yes |

Comments

Seismic walkdown performed week of 7/16/12 by M. Delaney & P. Gazda

Aux, El. 383 (1B Aux Feedpump Room)

Evaluated by:		Marlene Delaney	Date: 10/1/2012
		Philip Gazda	10/1/2012

Photos

None.

Status: Y N U

Area Walk-By Checklist (AWC)

Location (Bldg, Elev, Room/Area): Area Walk-by 20

Instructions for Completing Checklist

This checklist may be used to document the results of the Area Walk-By near one or more SWEL items. The space below each of the following questions may be used to record the results of judgments and findings. Additional space is provided at the end of this checklist for documenting other comments.

1. Does anchorage of equipment in the area appear to be free of potentially adverse seismic conditions (if visible without necessarily opening cabinets)? Yes

 2. Does anchorage of equipment in the area appear to be free of significant degraded conditions? Yes

 3. Based on a visual inspection from the floor, do the cable/conduit raceways and HVAC ducting appear to be free of potentially adverse seismic conditions (e.g., condition of supports is adequate and fill conditions of cable trays appear to be inside acceptable limits)? Yes

 4. Does it appear that the area is free of potentially adverse seismic spatial interactions with other equipment in the area (e.g., ceiling tiles and lighting)? Yes

 5. Does it appear that the area is free of potentially adverse seismic interactions that could cause flooding or spray in the area?
Large diameter fire protection piping is well supported. Yes

 6. Does it appear that the area is free of potentially adverse seismic interactions that could cause a fire in the area? Yes
-

Status: Y N U

Area Walk-By Checklist (AWC)

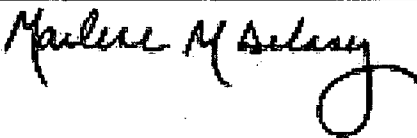
Location (Bldg, Elev, Room/Area): Area Walk-by 20

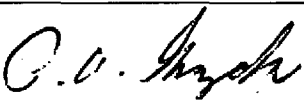
-
7. Does it appear that the area is free of potentially adverse seismic interactions associated with housekeeping practices, storage of portable equipment, and temporary installations (e.g., scaffolding, lead shielding)? Yes
Work table well-secured.
8. Have you looked for and found no other seismic conditions that could adversely affect the safety functions of the equipment in the area? Yes

Comments

Seismic walkdown performed week of 7/16/12 by M. Delaney & P. Gazda

Aux, El. 383 (1AP22E and 1AP24E area)

Evaluated by:  Marlene Delaney Date: 10/1/2012

 Philip Gazda 10/1/2012

Photos

None.

Status: Y N U

Area Walk-By Checklist (AWC)

Location (Bldg, Elev, Room/Area): Area Walk-by 21

Instructions for Completing Checklist

This checklist may be used to document the results of the Area Walk-By near one or more SWEL items. The space below each of the following questions may be used to record the results of judgments and findings. Additional space is provided at the end of this checklist for documenting other comments.

1. Does anchorage of equipment in the area appear to be free of potentially adverse seismic conditions (if visible without necessarily opening cabinets)? Yes

 2. Does anchorage of equipment in the area appear to be free of significant degraded conditions? Yes

 3. Based on a visual inspection from the floor, do the cable/conduit raceways and HVAC ducting appear to be free of potentially adverse seismic conditions (e.g., condition of supports is adequate and fill conditions of cable trays appear to be inside acceptable limits)? Yes

 4. Does it appear that the area is free of potentially adverse seismic spatial interactions with other equipment in the area (e.g., ceiling tiles and lighting)? Yes

 5. Does it appear that the area is free of potentially adverse seismic interactions that could cause flooding or spray in the area?
Fire protection piping is well-supported. Yes

 6. Does it appear that the area is free of potentially adverse seismic interactions that could cause a fire in the area? Yes

 7. Does it appear that the area is free of potentially adverse seismic interactions associated with housekeeping practices, storage of portable equipment, and temporary installations (e.g., scaffolding, lead shielding)? Yes
-

Status: Y N U

Area Walk-By Checklist (AWC)

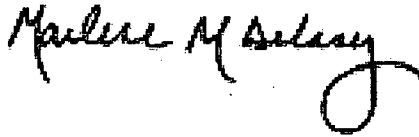
Location (Bldg, Elev, Room/Area): Area Walk-by 21

8. Have you looked for and found no other seismic conditions that could adversely affect the safety functions of the equipment in the area? Yes
Removable block wall held in place by grating. Cosmetic Concrete spalling at Column U-18 at southwest corner.
-

Comments

Seismic walkdown performed week of 7/16/12 by M. Delaney & P. Gazda

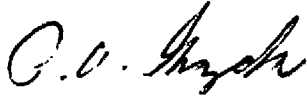
Aux, El. 383 (1FT-0132 Area (near U-18))



Evaluated by:

Marlene Delaney

Date: 10/1/2012



Philip Gazda

10/1/2012

Photos

None.

Status: Y N U

Area Walk-By Checklist (AWC)

Location (Bldg, Elev, Room/Area): Area Walk-by 22

Instructions for Completing Checklist

This checklist may be used to document the results of the Area Walk-By near one or more SWEL items. The space below each of the following questions may be used to record the results of judgments and findings. Additional space is provided at the end of this checklist for documenting other comments.

1. Does anchorage of equipment in the area appear to be free of potentially adverse seismic conditions (if visible without necessarily opening cabinets)? Yes

 2. Does anchorage of equipment in the area appear to be free of significant degraded conditions? Yes

 3. Based on a visual inspection from the floor, do the cable/conduit raceways and HVAC ducting appear to be free of potentially adverse seismic conditions (e.g., condition of supports is adequate and fill conditions of cable trays appear to be inside acceptable limits)? Yes

 4. Does it appear that the area is free of potentially adverse seismic spatial interactions with other equipment in the area (e.g., ceiling tiles and lighting)? Yes

 5. Does it appear that the area is free of potentially adverse seismic interactions that could cause flooding or spray in the area? Yes

 6. Does it appear that the area is free of potentially adverse seismic interactions that could cause a fire in the area? Yes
-

Status: Y N U

Area Walk-By Checklist (AWC)

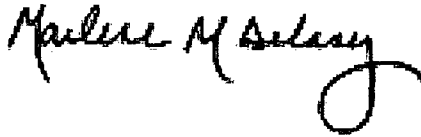
Location (Bldg, Elev, Room/Area): Area Walk-by 22

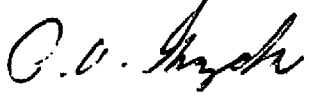
-
7. Does it appear that the area is free of potentially adverse seismic interactions associated with housekeeping practices, storage of portable equipment, and temporary installations (e.g., scaffolding, lead shielding)? Yes
Ladders in ladder storage area.
8. Have you looked for and found no other seismic conditions that could adversely affect the safety functions of the equipment in the area? Yes

Comments

Seismic walkdown performed week of 7/16/12 by M. Delaney & P. Gazda

Aux, El. 330 (OWO01CB area)

Evaluated by:  Marlene Delaney Date: 10/1/2012

 Philip Gazda 10/1/2012

Photos

None.

Status: Y N U

Area Walk-By Checklist (AWC)

Location (Bldg, Elev, Room/Area): Area Walk-by 23

Instructions for Completing Checklist

This checklist may be used to document the results of the Area Walk-By near one or more SWEL items. The space below each of the following questions may be used to record the results of judgments and findings. Additional space is provided at the end of this checklist for documenting other comments.

1. Does anchorage of equipment in the area appear to be free of potentially adverse seismic conditions (if visible without necessarily opening cabinets)? Yes

 2. Does anchorage of equipment in the area appear to be free of significant degraded conditions? Yes

 3. Based on a visual inspection from the floor, do the cable/conduit raceways and HVAC ducting appear to be free of potentially adverse seismic conditions (e.g., condition of supports is adequate and fill conditions of cable trays appear to be inside acceptable limits)? Yes

 4. Does it appear that the area is free of potentially adverse seismic spatial interactions with other equipment in the area (e.g., ceiling tiles and lighting)? Yes

 5. Does it appear that the area is free of potentially adverse seismic interactions that could cause flooding or spray in the area? Yes

 6. Does it appear that the area is free of potentially adverse seismic interactions that could cause a fire in the area? Yes

 7. Does it appear that the area is free of potentially adverse seismic interactions associated with housekeeping practices, storage of portable equipment, and temporary installations (e.g., scaffolding, lead shielding)? Yes
-

Status: Y N U

Area Walk-By Checklist (AWC)

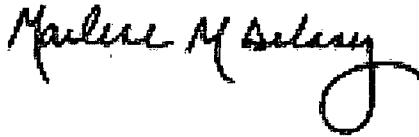
Location (Bldg, Elev, Room/Area): Area Walk-by 23

8. Have you looked for and found no other seismic conditions that could adversely affect the safety functions of the equipment in the area? Yes
Block walls are seismically designed. Removable block well-supported by grating cover.
-

Comments

Seismic walkdown performed week of 7/16/12 by M. Delaney & P. Gazda

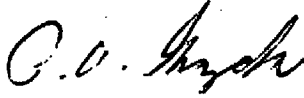
Aux, El. 364 (1AF005E and 1FT-AF014 area)



Evaluated by:

Marlene Delaney

Date: 10/1/2012



Philip Gazda

10/1/2012

Photos

None.

Status: Y N U

Area Walk-By Checklist (AWC)

Location (Bldg, Elev, Room/Area): Area Walk-by 24

Instructions for Completing Checklist

This checklist may be used to document the results of the Area Walk-By near one or more SWEL items. The space below each of the following questions may be used to record the results of judgments and findings. Additional space is provided at the end of this checklist for documenting other comments.

1. Does anchorage of equipment in the area appear to be free of potentially adverse seismic conditions (if visible without necessarily opening cabinets)? Yes

 2. Does anchorage of equipment in the area appear to be free of significant degraded conditions? Yes

 3. Based on a visual inspection from the floor, do the cable/conduit raceways and HVAC ducting appear to be free of potentially adverse seismic conditions (e.g., condition of supports is adequate and fill conditions of cable trays appear to be inside acceptable limits)? Yes

 4. Does it appear that the area is free of potentially adverse seismic spatial interactions with other equipment in the area (e.g., ceiling tiles and lighting)? Yes

 5. Does it appear that the area is free of potentially adverse seismic interactions that could cause flooding or spray in the area?
Fire protection piping is well supported. Yes

 6. Does it appear that the area is free of potentially adverse seismic interactions that could cause a fire in the area? Yes

 7. Does it appear that the area is free of potentially adverse seismic interactions associated with housekeeping practices, storage of portable equipment, and temporary installations (e.g., scaffolding, lead shielding)? Yes
-

Status: Y N U

Area Walk-By Checklist (AWC)

Location (Bldg, Elev, Room/Area): Area Walk-by 24

8. Have you looked for and found no other seismic conditions that could adversely affect the safety functions of the equipment in the area? Yes

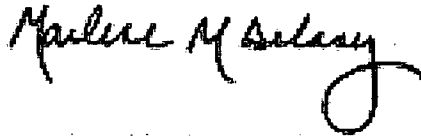
Seismic block walls.

Additional non-seismic notations: some wall degradation near Column L-18, on overhead CC piping (inlet to CC heat exchanger) 00CC01A HX clamp appears to be slightly displaced.

Comments

Seismic walkdown performed week of 7/16/12 by M. Delaney & P. Gazda

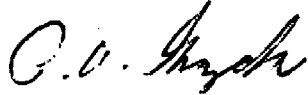
Aux, El. 364 (1CC01PB area)



Evaluated by:

Marlene Delaney

Date: 10/1/2012



Philip Gazda

10/1/2012

Photos

None.

Status: Y N U

Area Walk-By Checklist (AWC)

Location (Bldg, Elev, Room/Area): Area Walk-by 25

Instructions for Completing Checklist

This checklist may be used to document the results of the Area Walk-By near one or more SWEL items. The space below each of the following questions may be used to record the results of judgments and findings. Additional space is provided at the end of this checklist for documenting other comments.

1. Does anchorage of equipment in the area appear to be free of potentially adverse seismic conditions (if visible without necessarily opening cabinets)? Yes

 2. Does anchorage of equipment in the area appear to be free of significant degraded conditions? Yes

 3. Based on a visual inspection from the floor, do the cable/conduit raceways and HVAC ducting appear to be free of potentially adverse seismic conditions (e.g., condition of supports is adequate and fill conditions of cable trays appear to be inside acceptable limits)? Yes

 4. Does it appear that the area is free of potentially adverse seismic spatial interactions with other equipment in the area (e.g., ceiling tiles and lighting)? Yes

 5. Does it appear that the area is free of potentially adverse seismic interactions that could cause flooding or spray in the area? Yes

 6. Does it appear that the area is free of potentially adverse seismic interactions that could cause a fire in the area? Yes
-

Status: Y N U

Area Walk-By Checklist (AWC)

Location (Bldg, Elev, Room/Area): Area Walk-by 25

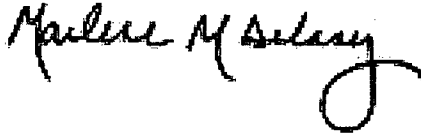
-
7. Does it appear that the area is free of potentially adverse seismic interactions associated with housekeeping practices, storage of portable equipment, and temporary installations (e.g., scaffolding, lead shielding)? Yes
Cart in area has chocked wheels and over 1 foot away from instrument rack
8. Have you looked for and found no other seismic conditions that could adversely affect the safety functions of the equipment in the area? Yes
Seismic block walls in area

Comments

Seismic walkdown performed week of 7/16/12 by M. Delaney & P. Gazda

Aux, El. 364 (1FT-0121 area)

Evaluated by:



Marlene Delaney

Date: 10/1/2012



Philip Gazda

10/1/2012

Photos

None.

Status: Y N U

Area Walk-By Checklist (AWC)

Location (Bldg, Elev, Room/Area): Area Walk-by 26

Instructions for Completing Checklist

This checklist may be used to document the results of the Area Walk-By near one or more SWEL items. The space below each of the following questions may be used to record the results of judgments and findings. Additional space is provided at the end of this checklist for documenting other comments.

1. Does anchorage of equipment in the area appear to be free of potentially adverse seismic conditions (if visible without necessarily opening cabinets)? Yes

 2. Does anchorage of equipment in the area appear to be free of significant degraded conditions? Yes

 3. Based on a visual inspection from the floor, do the cable/conduit raceways and HVAC ducting appear to be free of potentially adverse seismic conditions (e.g., condition of supports is adequate and fill conditions of cable trays appear to be inside acceptable limits)? Yes

 4. Does it appear that the area is free of potentially adverse seismic spatial interactions with other equipment in the area (e.g., ceiling tiles and lighting)? Yes

 5. Does it appear that the area is free of potentially adverse seismic interactions that could cause flooding or spray in the area? Yes

 6. Does it appear that the area is free of potentially adverse seismic interactions that could cause a fire in the area? Yes
-

Status: Y N U

Area Walk-By Checklist (AWC)

Location (Bldg, Elev, Room/Area): Area Walk-by 26

7. Does it appear that the area is free of potentially adverse seismic interactions associated with housekeeping practices, storage of portable equipment, and temporary installations (e.g., scaffolding, lead shielding)? Yes

There are a lot of radiation protection equipment, housekeeping carts, boxes all with adequate stand-off distances and chocked wheels.

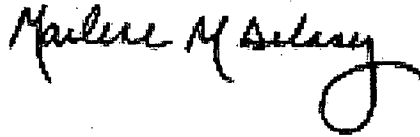
8. Have you looked for and found no other seismic conditions that could adversely affect the safety functions of the equipment in the area? Yes

There is degradation at the floor at the seismic block walls near fire protection line. No structural impact.

Comments

Seismic walkdown performed week of 7/16/12 by M. Delaney & P. Gazda

Aux, El. 346 (0SX147 area (P-21 through P-23))



Evaluated by:

Marlene Delaney

Date: 10/1/2012



Philip Gazda

10/1/2012

Photos

None.

Status: Y N U

Area Walk-By Checklist (AWC)

Location (Bldg, Elev, Room/Area): Area Walk-by 27

Instructions for Completing Checklist

This checklist may be used to document the results of the Area Walk-By near one or more SWEL items. The space below each of the following questions may be used to record the results of judgments and findings. Additional space is provided at the end of this checklist for documenting other comments.

1. Does anchorage of equipment in the area appear to be free of potentially adverse seismic conditions (if visible without necessarily opening cabinets)? Yes

 2. Does anchorage of equipment in the area appear to be free of significant degraded conditions? Yes

 3. Based on a visual inspection from the floor, do the cable/conduit raceways and HVAC ducting appear to be free of potentially adverse seismic conditions (e.g., condition of supports is adequate and fill conditions of cable trays appear to be inside acceptable limits)? Yes

 4. Does it appear that the area is free of potentially adverse seismic spatial interactions with other equipment in the area (e.g., ceiling tiles and lighting)? Yes

 5. Does it appear that the area is free of potentially adverse seismic interactions that could cause flooding or spray in the area? Yes

 6. Does it appear that the area is free of potentially adverse seismic interactions that could cause a fire in the area? Yes

 7. Does it appear that the area is free of potentially adverse seismic interactions associated with housekeeping practices, storage of portable equipment, and temporary installations (e.g., scaffolding, lead shielding)? Yes
-

Status: Y N U

Area Walk-By Checklist (AWC)

Location (Bldg, Elev, Room/Area): Area Walk-by 27

8. Have you looked for and found no other seismic conditions that could adversely affect the safety functions of the equipment in the area? Yes
Hairline diagonal cracks in east wall - near anchor but anchors are lightly loaded.
-

Comments

Seismic walkdown performed week of 7/16/12 by M. Delaney & P. Gazda

Aux, El. 330 (Column P-11 1AP38E area)

Marlene M. Delaney

Evaluated by:

Marlene Delaney

Date: 10/1/2012

P. V. Gazda

Philip Gazda

10/1/2012

Photos

None.

Status: Y N U

Area Walk-By Checklist (AWC)

Location (Bldg, Elev, Room/Area): Area Walk-by 28

Instructions for Completing Checklist

This checklist may be used to document the results of the Area Walk-By near one or more SWEL items. The space below each of the following questions may be used to record the results of judgments and findings. Additional space is provided at the end of this checklist for documenting other comments.

1. Does anchorage of equipment in the area appear to be free of potentially adverse seismic conditions (if visible without necessarily opening cabinets)? Yes

 2. Does anchorage of equipment in the area appear to be free of significant degraded conditions? Yes

 3. Based on a visual inspection from the floor, do the cable/conduit raceways and HVAC ducting appear to be free of potentially adverse seismic conditions (e.g., condition of supports is adequate and fill conditions of cable trays appear to be inside acceptable limits)? Yes

 4. Does it appear that the area is free of potentially adverse seismic spatial interactions with other equipment in the area (e.g., ceiling tiles and lighting)?
Overhead components are well-supported Yes

 5. Does it appear that the area is free of potentially adverse seismic interactions that could cause flooding or spray in the area? Yes

 6. Does it appear that the area is free of potentially adverse seismic interactions that could cause a fire in the area? Yes

 7. Does it appear that the area is free of potentially adverse seismic interactions associated with housekeeping practices, storage of portable equipment, and temporary installations (e.g., scaffolding, lead shielding)? Yes
-

Status: Y N U

Area Walk-By Checklist (AWC)

Location (Bldg, Elev, Room/Area): Area Walk-by 28

8. Have you looked for and found no other seismic conditions that could adversely affect the safety functions of the equipment in the area? Yes

NP-6695 concerns: Hairline vertical cracks in north wall where concrete patch has broken off; numerous cracks in floor where groundwater seepage has occurred - not near equipment therefore no structural/seismic concern

Comments

Seismic walkdown performed week of 7/16/12 by M. Delaney & P. Gazda

Aux, El. 330 (SX B Pump area 1SX01FB,1SX01PB,1SX01PB-C,1VA01SB,1SX005)

Marlene M Delaney

Evaluated by:

Marlene Delaney

Date: 10/1/2012

P. O. Gazda

Philip Gazda

10/1/2012

Photos

None.

Status: Y N U

Area Walk-By Checklist (AWC)

Location (Bldg, Elev, Room/Area): Area Walk-by 29

Instructions for Completing Checklist

This checklist may be used to document the results of the Area Walk-By near one or more SWEL items. The space below each of the following questions may be used to record the results of judgments and findings. Additional space is provided at the end of this checklist for documenting other comments.

1. Does anchorage of equipment in the area appear to be free of potentially adverse seismic conditions (if visible without necessarily opening cabinets)? Yes

 2. Does anchorage of equipment in the area appear to be free of significant degraded conditions? Yes

 3. Based on a visual inspection from the floor, do the cable/conduit raceways and HVAC ducting appear to be free of potentially adverse seismic conditions (e.g., condition of supports is adequate and fill conditions of cable trays appear to be inside acceptable limits)? Yes

 4. Does it appear that the area is free of potentially adverse seismic spatial interactions with other equipment in the area (e.g., ceiling tiles and lighting)? Yes

 5. Does it appear that the area is free of potentially adverse seismic interactions that could cause flooding or spray in the area? Yes

 6. Does it appear that the area is free of potentially adverse seismic interactions that could cause a fire in the area? Yes

 7. Does it appear that the area is free of potentially adverse seismic interactions associated with housekeeping practices, storage of portable equipment, and temporary installations (e.g., scaffolding, lead shielding)? Yes
-

Status: Y N U

Area Walk-By Checklist (AWC)

Location (Bldg, Elev, Room/Area): Area Walk-by 29

8. Have you looked for and found no other seismic conditions that could adversely affect the safety functions of the equipment in the area? Yes
Minor cracks in floor

Comments

Seismic walkdown performed week of 7/16/12 by M. Delaney & P. Gazda

Aux, El. 330 (1SX004 area)

Marlene M. Delaney

Evaluated by:

Marlene Delaney

Date: 10/1/2012

P. O. Gazda

Philip Gazda

10/1/2012

Photos

None.

Status: Y N U

Area Walk-By Checklist (AWC)

Location (Bldg, Elev, Room/Area): Area Walk-by 30

Instructions for Completing Checklist

This checklist may be used to document the results of the Area Walk-By near one or more SWEL items. The space below each of the following questions may be used to record the results of judgments and findings. Additional space is provided at the end of this checklist for documenting other comments.

1. Does anchorage of equipment in the area appear to be free of potentially adverse seismic conditions (if visible without necessarily opening cabinets)? Yes

 2. Does anchorage of equipment in the area appear to be free of significant degraded conditions? Yes

 3. Based on a visual inspection from the floor, do the cable/conduit raceways and HVAC ducting appear to be free of potentially adverse seismic conditions (e.g., condition of supports is adequate and fill conditions of cable trays appear to be inside acceptable limits)? Yes

 4. Does it appear that the area is free of potentially adverse seismic spatial interactions with other equipment in the area (e.g., ceiling tiles and lighting)? Yes

 5. Does it appear that the area is free of potentially adverse seismic interactions that could cause flooding or spray in the area? Yes

 6. Does it appear that the area is free of potentially adverse seismic interactions that could cause a fire in the area? Yes
-

Status: Y N U

Area Walk-By Checklist (AWC)

Location (Bldg, Elev, Room/Area): Area Walk-by 30

-
- | | |
|--|-----|
| 7. Does it appear that the area is free of potentially adverse seismic interactions associated with housekeeping practices, storage of portable equipment, and temporary installations (e.g., scaffolding, lead shielding)?
<i>Seismic housekeeping issues with storage boxes. Wheels locked but boxes could tip into instrument panels. IR 1390326 generated to move boxes. Note during Unit 2 walkdowns in same area, boxes were relocated and acceptable (7/30/12)</i> | No |
| 8. Have you looked for and found no other seismic conditions that could adversely affect the safety functions of the equipment in the area? | Yes |

Comments

Seismic walkdown performed week of 7/16/12 by M. Delaney & P. Gazda

Fuel Handling, El. 401 (adjacent to truck bay)

Evaluated by:

Marlene M Delaney

Marlene Delaney

Date: 10/1/2012

P. O. Gazda

Philip Gazda

10/1/2012

Photos

None.

Status: Y N U

Area Walk-By Checklist (AWC)

Location (Bldg, Elev, Room/Area): Area Walk-by 31

Instructions for Completing Checklist

This checklist may be used to document the results of the Area Walk-By near one or more SWEL items. The space below each of the following questions may be used to record the results of judgments and findings. Additional space is provided at the end of this checklist for documenting other comments.

1. Does anchorage of equipment in the area appear to be free of potentially adverse seismic conditions (if visible without necessarily opening cabinets)? Yes

 2. Does anchorage of equipment in the area appear to be free of significant degraded conditions? Yes

 3. Based on a visual inspection from the floor, do the cable/conduit raceways and HVAC ducting appear to be free of potentially adverse seismic conditions (e.g., condition of supports is adequate and fill conditions of cable trays appear to be inside acceptable limits)? Yes

 4. Does it appear that the area is free of potentially adverse seismic spatial interactions with other equipment in the area (e.g., ceiling tiles and lighting)? Yes

 5. Does it appear that the area is free of potentially adverse seismic interactions that could cause flooding or spray in the area? Yes

 6. Does it appear that the area is free of potentially adverse seismic interactions that could cause a fire in the area? Yes

 7. Does it appear that the area is free of potentially adverse seismic interactions associated with housekeeping practices, storage of portable equipment, and temporary installations (e.g., scaffolding, lead shielding)? Yes
-

Status: Y N U

Area Walk-By Checklist (AWC)

Location (Bldg, Elev, Room/Area): Area Walk-by 31

8. Have you looked for and found no other seismic conditions that could adversely affect the safety functions of the equipment in the area? Yes

Comments

Seismic walkdown performed week of 7/16/12 by M. Delaney & P. Gazda

Aux, El. 364 (0PI-FC003 and 5 area)

Marlene M. Delaney

Evaluated by:

Marlene Delaney

Date: 10/1/2012

P. O. Gazda

Philip Gazda

10/1/2012

Photos

None.

Status: Y N U

Area Walk-By Checklist (AWC)

Location (Bldg, Elev, Room/Area): Area Walk-by 32

Instructions for Completing Checklist

This checklist may be used to document the results of the Area Walk-By near one or more SWEL items. The space below each of the following questions may be used to record the results of judgments and findings. Additional space is provided at the end of this checklist for documenting other comments.

1. Does anchorage of equipment in the area appear to be free of potentially adverse seismic conditions (if visible without necessarily opening cabinets)? Yes

 2. Does anchorage of equipment in the area appear to be free of significant degraded conditions? Yes

 3. Based on a visual inspection from the floor, do the cable/conduit raceways and HVAC ducting appear to be free of potentially adverse seismic conditions (e.g., condition of supports is adequate and fill conditions of cable trays appear to be inside acceptable limits)? Yes

 4. Does it appear that the area is free of potentially adverse seismic spatial interactions with other equipment in the area (e.g., ceiling tiles and lighting)? Yes

 5. Does it appear that the area is free of potentially adverse seismic interactions that could cause flooding or spray in the area? Yes

 6. Does it appear that the area is free of potentially adverse seismic interactions that could cause a fire in the area? Yes

 7. Does it appear that the area is free of potentially adverse seismic interactions associated with housekeeping practices, storage of portable equipment, and temporary installations (e.g., scaffolding, lead shielding)? Yes
-

Status: Y N U

Area Walk-By Checklist (AWC)

Location (Bldg, Elev, Room/Area): Area Walk-by 32

8. Have you looked for and found no other seismic conditions that could adversely affect the safety functions of the equipment in the area? Yes

Comments

Seismic walkdown performed week of 7/16/12 by M. Delaney & P. Gazda

Fuel Handling, El. 426 (OTIS-0626)

Marlene M. Delaney

Evaluated by:

Marlene Delaney

Date: 10/1/2012

P. V. Gazda

Philip Gazda

10/1/2012

Photos

None.

Status: Y N U

Area Walk-By Checklist (AWC)

Location (Bldg, Elev, Room/Area): Area Walk-by 33

Instructions for Completing Checklist

This checklist may be used to document the results of the Area Walk-By near one or more SWEL items. The space below each of the following questions may be used to record the results of judgments and findings. Additional space is provided at the end of this checklist for documenting other comments.

1. Does anchorage of equipment in the area appear to be free of potentially adverse seismic conditions (if visible without necessarily opening cabinets)? Yes

 2. Does anchorage of equipment in the area appear to be free of significant degraded conditions? Yes

 3. Based on a visual inspection from the floor, do the cable/conduit raceways and HVAC ducting appear to be free of potentially adverse seismic conditions (e.g., condition of supports is adequate and fill conditions of cable trays appear to be inside acceptable limits)? Yes

 4. Does it appear that the area is free of potentially adverse seismic spatial interactions with other equipment in the area (e.g., ceiling tiles and lighting)? Yes

 5. Does it appear that the area is free of potentially adverse seismic interactions that could cause flooding or spray in the area? Yes

 6. Does it appear that the area is free of potentially adverse seismic interactions that could cause a fire in the area? Yes

 7. Does it appear that the area is free of potentially adverse seismic interactions associated with housekeeping practices, storage of portable equipment, and temporary installations (e.g., scaffolding, lead shielding)? Yes
-

Status: Y N U

Area Walk-By Checklist (AWC)

Location (Bldg, Elev, Room/Area): Area Walk-by 33

8. Have you looked for and found no other seismic conditions that could adversely affect the safety functions of the equipment in the area? Yes
Seismic block walls (removable portion well-supported by grating). Concrete cracking in floor (not critical).
-

Comments

Seismic walkdown performed week of 7/16/12 by M. Delaney & P. Gazda

Fuel Handling, El. 401 (HX and Pump Room (work with Area 34))

Marlene M Delaney

Evaluated by:

Marlene Delaney

Date: 10/1/2012

P. V. Gazda

Philip Gazda

10/1/2012

Photos

None.

Status: Y N U

Area Walk-By Checklist (AWC)

Location (Bldg, Elev, Room/Area): Area Walk-by 34

Instructions for Completing Checklist

This checklist may be used to document the results of the Area Walk-By near one or more SWEL items. The space below each of the following questions may be used to record the results of judgments and findings. Additional space is provided at the end of this checklist for documenting other comments.

1. Does anchorage of equipment in the area appear to be free of potentially adverse seismic conditions (if visible without necessarily opening cabinets)? Yes

 2. Does anchorage of equipment in the area appear to be free of significant degraded conditions? Yes

 3. Based on a visual inspection from the floor, do the cable/conduit raceways and HVAC ducting appear to be free of potentially adverse seismic conditions (e.g., condition of supports is adequate and fill conditions of cable trays appear to be inside acceptable limits)? Yes

 4. Does it appear that the area is free of potentially adverse seismic spatial interactions with other equipment in the area (e.g., ceiling tiles and lighting)? Yes

 5. Does it appear that the area is free of potentially adverse seismic interactions that could cause flooding or spray in the area? Yes

 6. Does it appear that the area is free of potentially adverse seismic interactions that could cause a fire in the area? Yes

 7. Does it appear that the area is free of potentially adverse seismic interactions associated with housekeeping practices, storage of portable equipment, and temporary installations (e.g., scaffolding, lead shielding)? Yes
-

Status: Y N U

Area Walk-By Checklist (AWC)

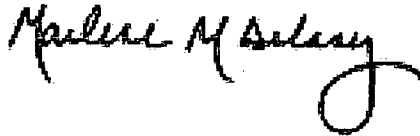
Location (Bldg, Elev, Room/Area): Area Walk-by 34

8. Have you looked for and found no other seismic conditions that could adversely affect the safety functions of the equipment in the area? Yes
Seismic block wall (removable portion protected by grating). Cracks in floor - not critical.
-

Comments

Seismic walkdown performed week of 7/16/12 by M. Delaney & P. Gazda

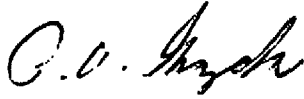
Fuel Handling, El. 401 (work with Area 33)



Evaluated by:

Marlene Delaney

Date: 10/1/2012



Philip Gazda

10/1/2012

Photos

None.

Status: Y N U

Area Walk-By Checklist (AWC)

Location (Bldg, Elev, Room/Area): Area Walk-by 35

Instructions for Completing Checklist

This checklist may be used to document the results of the Area Walk-By near one or more SWEL items. The space below each of the following questions may be used to record the results of judgments and findings. Additional space is provided at the end of this checklist for documenting other comments.

1. Does anchorage of equipment in the area appear to be free of potentially adverse seismic conditions (if visible without necessarily opening cabinets)? Yes

 2. Does anchorage of equipment in the area appear to be free of significant degraded conditions?
cracks in concrete floor Yes

 3. Based on a visual inspection from the floor, do the cable/conduit raceways and HVAC ducting appear to be free of potentially adverse seismic conditions (e.g., condition of supports is adequate and fill conditions of cable trays appear to be inside acceptable limits)? Yes

 4. Does it appear that the area is free of potentially adverse seismic spatial interactions with other equipment in the area (e.g., ceiling tiles and lighting)? Yes

 5. Does it appear that the area is free of potentially adverse seismic interactions that could cause flooding or spray in the area? Yes

 6. Does it appear that the area is free of potentially adverse seismic interactions that could cause a fire in the area? Yes

 7. Does it appear that the area is free of potentially adverse seismic interactions associated with housekeeping practices, storage of portable equipment, and temporary installations (e.g., scaffolding, lead shielding)? Yes
-

Status: Y N U

Area Walk-By Checklist (AWC)

Location (Bldg, Elev, Room/Area): Area Walk-by 35

8. Have you looked for and found no other seismic conditions that could adversely affect the safety functions of the equipment in the area? Yes
NP-6695 concern: small cracks in floor

Comments

Seismic walkdown performed week of 7/16/12 by M. Delaney & P. Gazda

Aux, El. 330, (vicinity of 1RH01PB)

Marlene M. Delaney

Evaluated by:

Marlene Delaney

Date: 10/1/2012

P. V. Gazda

Philip Gazda

10/1/2012

Photos

None.

Status: Y N U

Area Walk-By Checklist (AWC)

Location (Bldg, Elev, Room/Area): Area Walk-by 36

Instructions for Completing Checklist

This checklist may be used to document the results of the Area Walk-By near one or more SWEL items. The space below each of the following questions may be used to record the results of judgments and findings. Additional space is provided at the end of this checklist for documenting other comments.

1. Does anchorage of equipment in the area appear to be free of potentially adverse seismic conditions (if visible without necessarily opening cabinets)? Yes

 2. Does anchorage of equipment in the area appear to be free of significant degraded conditions? Yes

 3. Based on a visual inspection from the floor, do the cable/conduit raceways and HVAC ducting appear to be free of potentially adverse seismic conditions (e.g., condition of supports is adequate and fill conditions of cable trays appear to be inside acceptable limits)? Yes

 4. Does it appear that the area is free of potentially adverse seismic spatial interactions with other equipment in the area (e.g., ceiling tiles and lighting)? Yes

 5. Does it appear that the area is free of potentially adverse seismic interactions that could cause flooding or spray in the area? Yes

 6. Does it appear that the area is free of potentially adverse seismic interactions that could cause a fire in the area? Yes

 7. Does it appear that the area is free of potentially adverse seismic interactions associated with housekeeping practices, storage of portable equipment, and temporary installations (e.g., scaffolding, lead shielding)? Yes
-

Status: Y N U

Area Walk-By Checklist (AWC)

Location (Bldg, Elev, Room/Area): Area Walk-by 36

8. Have you looked for and found no other seismic conditions that could adversely affect the safety functions of the equipment in the area? Yes

Comments

Seismic walkdown performed week of 7/16/12 by M. Delaney & P. Gazda

Aux, El. 357, (1B RHR - 1RH607)

Marlene M. Delaney

Evaluated by:

Marlene Delaney

Date: 10/1/2012

P. O. Gazda

Philip Gazda

10/1/2012

Photos

None.

Status: Y N U

Area Walk-By Checklist (AWC)

Location (Bldg, Elev, Room/Area): Area Walk-by 37

Instructions for Completing Checklist

This checklist may be used to document the results of the Area Walk-By near one or more SWEL items. The space below each of the following questions may be used to record the results of judgments and findings. Additional space is provided at the end of this checklist for documenting other comments.

1. Does anchorage of equipment in the area appear to be free of potentially adverse seismic conditions (if visible without necessarily opening cabinets)? Yes
NP-6695 concern: crack in floor

 2. Does anchorage of equipment in the area appear to be free of significant degraded conditions? Yes

 3. Based on a visual inspection from the floor, do the cable/conduit raceways and HVAC ducting appear to be free of potentially adverse seismic conditions (e.g., condition of supports is adequate and fill conditions of cable trays appear to be inside acceptable limits)? Yes

 4. Does it appear that the area is free of potentially adverse seismic spatial interactions with other equipment in the area (e.g., ceiling tiles and lighting)? Yes

 5. Does it appear that the area is free of potentially adverse seismic interactions that could cause flooding or spray in the area? Yes

 6. Does it appear that the area is free of potentially adverse seismic interactions that could cause a fire in the area? Yes

 7. Does it appear that the area is free of potentially adverse seismic interactions associated with housekeeping practices, storage of portable equipment, and temporary installations (e.g., scaffolding, lead shielding)? Yes
-

Status: Y N U

Area Walk-By Checklist (AWC)

Location (Bldg, Elev, Room/Area): Area Walk-by 37

8. Have you looked for and found no other seismic conditions that could adversely affect the safety functions of the equipment in the area? Yes

Comments

Seismic walkdown performed week of 7/16/12 by M. Delaney & P. Gazda

Area Walk-by 37 Aux Bldg EI 364 (1VA06SA)

Marlene M. Delaney

Evaluated by:

Marlene Delaney

Date: 10/1/2012

P. O. Gazda

Philip Gazda

10/1/2012

Photos

None.

Status: Y N U

Area Walk-By Checklist (AWC)

Location (Bldg, Elev, Room/Area): Area Walk-by 38

Instructions for Completing Checklist

This checklist may be used to document the results of the Area Walk-By near one or more SWEL items. The space below each of the following questions may be used to record the results of judgments and findings. Additional space is provided at the end of this checklist for documenting other comments.

1. Does anchorage of equipment in the area appear to be free of potentially adverse seismic conditions (if visible without necessarily opening cabinets)? Yes

 2. Does anchorage of equipment in the area appear to be free of significant degraded conditions? Yes

 3. Based on a visual inspection from the floor, do the cable/conduit raceways and HVAC ducting appear to be free of potentially adverse seismic conditions (e.g., condition of supports is adequate and fill conditions of cable trays appear to be inside acceptable limits)? Yes

 4. Does it appear that the area is free of potentially adverse seismic spatial interactions with other equipment in the area (e.g., ceiling tiles and lighting)? Yes

 5. Does it appear that the area is free of potentially adverse seismic interactions that could cause flooding or spray in the area? Yes

 6. Does it appear that the area is free of potentially adverse seismic interactions that could cause a fire in the area? Yes

 7. Does it appear that the area is free of potentially adverse seismic interactions associated with housekeeping practices, storage of portable equipment, and temporary installations (e.g., scaffolding, lead shielding)? Yes
-

Status: Y N U

Area Walk-By Checklist (AWC)

Location (Bldg, Elev, Room/Area): Area Walk-by 38

8. Have you looked for and found no other seismic conditions that could adversely affect the safety functions of the equipment in the area? Yes

Comments

Seismic walkdown performed week of 7/16/12 by M. Delaney & P. Gazda

Aux, El. 364 (1SI8804B area)

Marlene M. Delaney

Evaluated by:

Marlene Delaney

Date: 10/1/2012

P. V. Gazda

Philip Gazda

10/1/2012

Photos

None.

Status: Y N U

Area Walk-By Checklist (AWC)

Location (Bldg, Elev, Room/Area): Area Walk-by 39

Instructions for Completing Checklist

This checklist may be used to document the results of the Area Walk-By near one or more SWEL items. The space below each of the following questions may be used to record the results of judgments and findings. Additional space is provided at the end of this checklist for documenting other comments.

1. Does anchorage of equipment in the area appear to be free of potentially adverse seismic conditions (if visible without necessarily opening cabinets)? Yes

 2. Does anchorage of equipment in the area appear to be free of significant degraded conditions? Yes

 3. Based on a visual inspection from the floor, do the cable/conduit raceways and HVAC ducting appear to be free of potentially adverse seismic conditions (e.g., condition of supports is adequate and fill conditions of cable trays appear to be inside acceptable limits)? Yes

 4. Does it appear that the area is free of potentially adverse seismic spatial interactions with other equipment in the area (e.g., ceiling tiles and lighting)? Yes

 5. Does it appear that the area is free of potentially adverse seismic interactions that could cause flooding or spray in the area? Yes

 6. Does it appear that the area is free of potentially adverse seismic interactions that could cause a fire in the area? Yes

 7. Does it appear that the area is free of potentially adverse seismic interactions associated with housekeeping practices, storage of portable equipment, and temporary installations (e.g., scaffolding, lead shielding)? Yes
-

Status: Y N U

Area Walk-By Checklist (AWC)

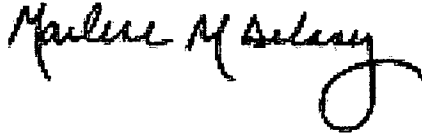
Location (Bldg, Elev, Room/Area): Area Walk-by 39

8. Have you looked for and found no other seismic conditions that could adversely affect the safety functions of the equipment in the area? Yes
Approximately 12' west of level transmitter, RWST tunnel hatch appear to have rainwater leak. IR 1390831 generated. No seismic impact.
-

Comments

Seismic walkdown performed week of 7/16/12 by M. Delaney & P. Gazda

Aux, El. 379 (RWST tunnel 1LT-0932)



Evaluated by:

Marlene Delaney

Date: 10/1/2012



Philip Gazda

10/1/2012

Photos

None.

Status: Y N U

Area Walk-By Checklist (AWC)

Location (Bldg, Elev, Room/Area): Area Walk-by 40

Instructions for Completing Checklist

This checklist may be used to document the results of the Area Walk-By near one or more SWEL items. The space below each of the following questions may be used to record the results of judgments and findings. Additional space is provided at the end of this checklist for documenting other comments.

1. Does anchorage of equipment in the area appear to be free of potentially adverse seismic conditions (if visible without necessarily opening cabinets)? Yes

 2. Does anchorage of equipment in the area appear to be free of significant degraded conditions? Yes

 3. Based on a visual inspection from the floor, do the cable/conduit raceways and HVAC ducting appear to be free of potentially adverse seismic conditions (e.g., condition of supports is adequate and fill conditions of cable trays appear to be inside acceptable limits)? Yes
Trolley beam well-supported

 4. Does it appear that the area is free of potentially adverse seismic spatial interactions with other equipment in the area (e.g., ceiling tiles and lighting)? Yes

 5. Does it appear that the area is free of potentially adverse seismic interactions that could cause flooding or spray in the area? Yes

 6. Does it appear that the area is free of potentially adverse seismic interactions that could cause a fire in the area? Yes

 7. Does it appear that the area is free of potentially adverse seismic interactions associated with housekeeping practices, storage of portable equipment, and temporary installations (e.g., scaffolding, lead shielding)? Yes
-

Status: Y N U

Area Walk-By Checklist (AWC)

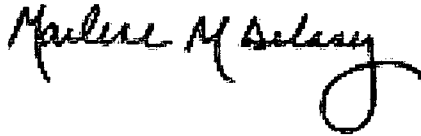
Location (Bldg, Elev, Room/Area): Area Walk-by 40

8. Have you looked for and found no other seismic conditions that could adversely affect the safety functions of the equipment in the area? Yes
Seismic block walls - removable portion supported by grating.

Comments

Seismic walkdown performed week of 7/16/12 by M. Delaney & P. Gazda

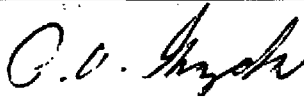
Aux, El. 364 (1CV01PB,1VA11J, 1CV02SB)



Evaluated by:

Marlene Delaney

Date: 10/1/2012



Philip Gazda

10/1/2012

Photos

None.

Status: Y N U

Area Walk-By Checklist (AWC)

Location (Bldg, Elev, Room/Area): Area Walk-by 41

Instructions for Completing Checklist

This checklist may be used to document the results of the Area Walk-By near one or more SWEL items. The space below each of the following questions may be used to record the results of judgments and findings. Additional space is provided at the end of this checklist for documenting other comments.

1. Does anchorage of equipment in the area appear to be free of potentially adverse seismic conditions (if visible without necessarily opening cabinets)? Yes

 2. Does anchorage of equipment in the area appear to be free of significant degraded conditions? Yes

 3. Based on a visual inspection from the floor, do the cable/conduit raceways and HVAC ducting appear to be free of potentially adverse seismic conditions (e.g., condition of supports is adequate and fill conditions of cable trays appear to be inside acceptable limits)? Yes

 4. Does it appear that the area is free of potentially adverse seismic spatial interactions with other equipment in the area (e.g., ceiling tiles and lighting)? Yes

 5. Does it appear that the area is free of potentially adverse seismic interactions that could cause flooding or spray in the area?
Sprinkler piping is well-supported Yes

 6. Does it appear that the area is free of potentially adverse seismic interactions that could cause a fire in the area? Yes

 7. Does it appear that the area is free of potentially adverse seismic interactions associated with housekeeping practices, storage of portable equipment, and temporary installations (e.g., scaffolding, lead shielding)? Yes
-

Status: Y N U

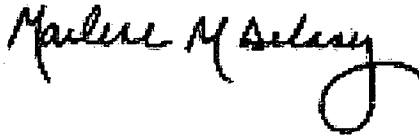
Area Walk-By Checklist (AWC)

Location (Bldg, Elev, Room/Area): Area Walk-by 41

8. Have you looked for and found no other seismic conditions that could adversely affect the safety functions of the equipment in the area? Yes
NP-6695 concern: large crack in wall near R9. Not a seismic concern.

Comments

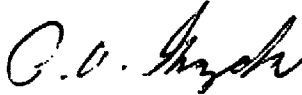
Aux, El. 364 (work with Area Walk-by 42)



Evaluated by:

Marlene Delaney

Date: 10/1/2012



Philip Gazda

10/1/2012

Photos

None.

Status: Y N U

Area Walk-By Checklist (AWC)

Location (Bldg, Elev, Room/Area): Area Walk-by 42

Instructions for Completing Checklist

This checklist may be used to document the results of the Area Walk-By near one or more SWEL items. The space below each of the following questions may be used to record the results of judgments and findings. Additional space is provided at the end of this checklist for documenting other comments.

1. Does anchorage of equipment in the area appear to be free of potentially adverse seismic conditions (if visible without necessarily opening cabinets)? Yes

 2. Does anchorage of equipment in the area appear to be free of significant degraded conditions? Yes

 3. Based on a visual inspection from the floor, do the cable/conduit raceways and HVAC ducting appear to be free of potentially adverse seismic conditions (e.g., condition of supports is adequate and fill conditions of cable trays appear to be inside acceptable limits)? Yes

 4. Does it appear that the area is free of potentially adverse seismic spatial interactions with other equipment in the area (e.g., ceiling tiles and lighting)? Yes

 5. Does it appear that the area is free of potentially adverse seismic interactions that could cause flooding or spray in the area? Yes

 6. Does it appear that the area is free of potentially adverse seismic interactions that could cause a fire in the area? Yes

 7. Does it appear that the area is free of potentially adverse seismic interactions associated with housekeeping practices, storage of portable equipment, and temporary installations (e.g., scaffolding, lead shielding)? Yes
-

Status: Y N U

Area Walk-By Checklist (AWC)

Location (Bldg, Elev, Room/Area): Area Walk-by 42

8. Have you looked for and found no other seismic conditions that could adversely affect the safety functions of the equipment in the area? Yes
crack in curved wall with minor leakage (not a structural/seismic issue)

Comments

Seismic walkdown performed week of 7/16/12 by M. Delaney & P. Gazda

Aux, El. 364 Curved wall (work with Area Walk-by 41)

Marlene M Delaney

Evaluated by:

Marlene Delaney

Date: 10/1/2012

P. O. Gazda

Philip Gazda

10/1/2012

Photos

None.

Status: Y N U

Area Walk-By Checklist (AWC)

Location (Bldg, Elev, Room/Area): Area Walk-by 43

Instructions for Completing Checklist

This checklist may be used to document the results of the Area Walk-By near one or more SWEL items. The space below each of the following questions may be used to record the results of judgments and findings. Additional space is provided at the end of this checklist for documenting other comments.

1. Does anchorage of equipment in the area appear to be free of potentially adverse seismic conditions (if visible without necessarily opening cabinets)? Yes

 2. Does anchorage of equipment in the area appear to be free of significant degraded conditions? Yes

 3. Based on a visual inspection from the floor, do the cable/conduit raceways and HVAC ducting appear to be free of potentially adverse seismic conditions (e.g., condition of supports is adequate and fill conditions of cable trays appear to be inside acceptable limits)? Yes

 4. Does it appear that the area is free of potentially adverse seismic spatial interactions with other equipment in the area (e.g., ceiling tiles and lighting)? Yes

 5. Does it appear that the area is free of potentially adverse seismic interactions that could cause flooding or spray in the area?
Well-supported fire protection piping Yes

 6. Does it appear that the area is free of potentially adverse seismic interactions that could cause a fire in the area? Yes

 7. Does it appear that the area is free of potentially adverse seismic interactions associated with housekeeping practices, storage of portable equipment, and temporary installations (e.g., scaffolding, lead shielding)? Yes
-

Status: Y N U

Area Walk-By Checklist (AWC)

Location (Bldg, Elev, Room/Area): Area Walk-by 43

8. Have you looked for and found no other seismic conditions that could adversely affect the safety functions of the equipment in the area?
all components well-supported Yes

Comments

Seismic walkdown performed week of 7/16/12 by M. Delaney & P. Gazda

Aux, El. 364 (Curved wall (closest to MCC) 1CC685, 1CV8355A, 1FC010)

Marlene M Delaney

Evaluated by:

Marlene Delaney

Date: 10/1/2012

P. O. Gazda

Philip Gazda

10/1/2012

Photos

None.

Status: Y N U

Area Walk-By Checklist (AWC)

Location (Bldg, Elev, Room/Area): Area Walk-by 44

Instructions for Completing Checklist

This checklist may be used to document the results of the Area Walk-By near one or more SWEL items. The space below each of the following questions may be used to record the results of judgments and findings. Additional space is provided at the end of this checklist for documenting other comments.

1. Does anchorage of equipment in the area appear to be free of potentially adverse seismic conditions (if visible without necessarily opening cabinets)? Yes

 2. Does anchorage of equipment in the area appear to be free of significant degraded conditions? Yes

 3. Based on a visual inspection from the floor, do the cable/conduit raceways and HVAC ducting appear to be free of potentially adverse seismic conditions (e.g., condition of supports is adequate and fill conditions of cable trays appear to be inside acceptable limits)? Yes

 4. Does it appear that the area is free of potentially adverse seismic spatial interactions with other equipment in the area (e.g., ceiling tiles and lighting)? Yes

 5. Does it appear that the area is free of potentially adverse seismic interactions that could cause flooding or spray in the area? Yes

 6. Does it appear that the area is free of potentially adverse seismic interactions that could cause a fire in the area? Yes

 7. Does it appear that the area is free of potentially adverse seismic interactions associated with housekeeping practices, storage of portable equipment, and temporary installations (e.g., scaffolding, lead shielding)? Yes
-

Status: Y N U

Area Walk-By Checklist (AWC)

Location (Bldg, Elev, Room/Area): Area Walk-by 44

8. Have you looked for and found no other seismic conditions that could adversely affect the safety functions of the equipment in the area? Yes
some components have boric acid leaks

Comments

Aux, El. 364 (Curved Wall vicinity of 1SI8801B/C)

Marlene M Delaney

Evaluated by:

Marlene Delaney

Date: 10/1/2012

P. O. Gazda

Philip Gazda

10/1/2012

Photos

None.

Status: Y N U

Area Walk-By Checklist (AWC)

Location (Bldg, Elev, Room/Area): Area Walk-by 45

Instructions for Completing Checklist

This checklist may be used to document the results of the Area Walk-By near one or more SWEL items. The space below each of the following questions may be used to record the results of judgments and findings. Additional space is provided at the end of this checklist for documenting other comments.

1. Does anchorage of equipment in the area appear to be free of potentially adverse seismic conditions (if visible without necessarily opening cabinets)? Yes

 2. Does anchorage of equipment in the area appear to be free of significant degraded conditions? Yes

 3. Based on a visual inspection from the floor, do the cable/conduit raceways and HVAC ducting appear to be free of potentially adverse seismic conditions (e.g., condition of supports is adequate and fill conditions of cable trays appear to be inside acceptable limits)? Yes

 4. Does it appear that the area is free of potentially adverse seismic spatial interactions with other equipment in the area (e.g., ceiling tiles and lighting)? Yes

 5. Does it appear that the area is free of potentially adverse seismic interactions that could cause flooding or spray in the area? Yes
Fire protection lines are well supported.

 6. Does it appear that the area is free of potentially adverse seismic interactions that could cause a fire in the area? Yes

 7. Does it appear that the area is free of potentially adverse seismic interactions associated with housekeeping practices, storage of portable equipment, and temporary installations (e.g., scaffolding, lead shielding)? Yes
-

Status: Y N U

Area Walk-By Checklist (AWC)

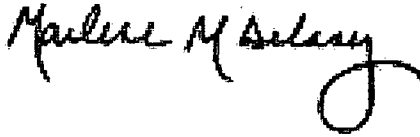
Location (Bldg, Elev, Room/Area): Area Walk-by 45

8. Have you looked for and found no other seismic conditions that could adversely affect the safety functions of the equipment in the area? Yes
Block walls in area are seismically designed and controlled. Ladders are anchored or stored in ladder storage area.
-

Comments

Seismic walkdown performed week of 7/16/12 by M. Delaney & P. Gazda

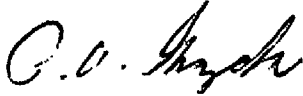
Aux, El. 451, (OBVC Room)



Evaluated by:

Marlene Delaney

Date: 10/1/2012



Philip Gazda

10/1/2012

Photos

None.

E

Plan for Future Seismic Walkdown of Inaccessible Equipment

Sixteen (16) items could not be walked down during the 180-day period following the issuance of the 10CFR50.54(f) letter due to their being inaccessible. The items will be walked down during a unit outage or time when the equipment is accessible, as appropriate. Table E-1 summarizes the reasons each item is inaccessible during normal plant operation and notes the Braidwood Station Issue Report (IR) that has been written to track completion of the Seismic Walkdowns (and Area Walk-bys) for these items. It is noted that SSCs identified on Table E-1 require a complete inspection including, as applicable, internal inspections of electrical cabinets for other adverse seismic conditions, as required.

Certain cabinets require supplemental internal inspection for other adverse seismic conditions as summarized in Table E-2. Supplemental internal inspections of these cabinets are required due to clarifications provided by the NRC after the online seismic walkdowns were completed. These Supplemental inspections will be completed during a unit outage or another time when the equipment is accessible, as appropriate. It is noted, that SSCs identified on Table E-1 do not appear on Table E-2.

Table E-1. Inaccessible and Deferred Equipment List

Component ID	Description	Reason for Inaccessibility	Action Request ID (IR)	Resolution/ Status	Milestone Completion
0VC05YA	ISOLATION DAMPTER BUTTERFLY	Equipment running – no access	1427786	Deferred to outage	A1R17
1RD05E	RX TRIP BREAKERS	Equipment energized – equipment outage required	1427786 1428448	Deferred to outage	A1R17
1AP10E	EQ 480V ESF SUBSTATION BUS 131X ASMBLY	Equipment energized – equipment outage required	1427786 1428448	Deferred to outage	A1R17
1AP05E	EQ 4160 VOLT ESF SWITCH GEAR 141 1AP075 ASMBLY	Equipment energized – equipment outage required	1427786 1428448	Deferred to outage	A1R17
1AP12E	EQ SWGR 132X 480 VOLT ESF	Equipment energized – equipment outage required	1427786 1428448	Deferred to outage	A1R17
1AP06E	4160 VOLT ESF SWITCH BUS 142	Equipment energized – equipment outage required	1427786 1428448	Deferred to outage	A1R17
1LT-0518	S/G 1A LEVEL LOOP D/P XMTTR 2/FILLED LEG	Located in Containment	1427786	Deferred to outage	A1R17
1CC9416	CC FROM RC PMPS ISOL VLV ASMBLY; 6"	Located in Containment	1427786	Deferred to outage	A1R17
1RY8028	PW TO PRT CONTAINMENT ISOLATION VLV	Located in Containment	1427786	Deferred to outage	A1R17
1RH8702A	RC LOOP 1C TO RH PMP 1B SUCT ISOL VLV ASMBLY; 12"	Located in Containment	1427786	Deferred to outage	A1R17
1LT-0459	EQ PRESSURIZER LEVEL TRANSMITTER	Located in Containment	1427786	Deferred to outage	A1R17
1PT-0455	EQ PZR PRESSURE CHANNEL 1	Located in Containment	1427786	Deferred to outage	A1R17

Component ID	Description	Reason for Inaccessibility	Action Request ID (IR)	Resolution/ Status	Milestone Completion
1VP01AA	CNMT ESS'L SERVICE WATER COIL 1A (RCFC)	Located in Containment	1427786	Deferred to outage	A1R17
1RY455A	PZR PORV (C/S AT 1PM05J) ASMBLY	Located in Containment	1427786	Deferred to outage	A1R17
1RY32MA	PORV ACCUMULATOR 1A	Located in Containment	1427786	Deferred to outage	A1R17
1TE-RC022A	RC WIDE RANGE LP 1A TEMP	Located in Containment	1427786	Deferred to outage	A1R17

Table E-2. Supplemental Cabinet Internal Inspection List

COMPONENT ID	DESCRIPTION	EQUIPMENT CLASS	ACCESSIBLE (Y/N)	IF NOT ACCESSIBLE, WHY?	MILESTONE COMPLETION	TRACKING NUMBER (IR No.)	STATUS / INSPECTION RESULTS
1AP21E	480V AUX BLDG ESF MCC 131X1 ASMBLY	(01) Motor Control Centers	N - Front Y - Back	Front panels require extensive disassembly	A1R17	IR 1428448	Open
1AP22E	480V AUX BLDG ESF MCC 131X3 ASMBLY	(01) Motor Control Centers	N - Front Y - Back	Front panels require extensive disassembly	10/30/12	IR 1428448	Inspection complete, results to be included in a future transmittal
1AP24E	EQ 480 V AUX BLDG ESF MCC 132X3 ASMBLY	(01) Motor Control Centers	N - Front Y - Back	Front panels require extensive disassembly	10/30/12	IR 1428448	Inspection complete, results to be included in a future transmittal
1AP27E	EQ 480V AUX BLDG MCC 132X2 ASMBLY	(01) Motor Control Centers	N - Front Y - Back	Front panels require extensive disassembly	10/30/12	IR 1428448	Inspection complete, results to be included in a future transmittal
1AP38E	ASSY - 480V AUX BLDG MCC 133X1A	(01) Motor Control Centers	N - Front Y - Back	Front panels require extensive disassembly	10/30/12	IR 1428448	Inspection complete, results to be included in a future transmittal

COMPONENT ID	DESCRIPTION	EQUIPMENT CLASS	ACCESSIBLE (Y/N)	IF NOT ACCESSIBLE, WHY?	MILESTONE COMPLETION	TRACKING NUMBER (IR No.)	STATUS / INSPECTION RESULTS
1AP11E	EQ 480V ESF UNIT SUB 131X TRANSFORMER 1AP086	(04) Transformers	N	Extensive disassembly required		IR 1428448	Closed
1IP02E	INSTRUMENT BUS 112 TRANSFORMER - DIV. 12	(04) Transformers	N - Back Y - Front	Back requires extensive disassembly	A1R17	IR 1428448	Open
1DC06E	125V DC ESF DIST CENTER 112	(14) Distribution Panels	N	ESF distribution sub panels 1DC06EA and 1DC06EB only Panel requires excessive disassembly		IR 1428448	Closed
1DC10J	125V DC FUSE PANEL - DIV. 11	(14) Distribution Panels	Y		A1R17	IR 1428448	Open
1DC11J	125V DC FUSE PANEL - DIV. 12	(14) Distribution Panels	Y		A1R17	IR 1428448	Open
1IP02J	120 VAC INSTRUMENT BUS DISTRIBUTION PANEL 112 - DIV. 12	(14) Distribution Panels	Y		A1R17	IR 1428448	Open
1DC04E	BATTERY CHARGER 112 DIV. 12	(16) Battery Chargers and Inverters	N - Back Y - Front	Back panels require extensive disassembly	A1R17	IR 1428448	Open
1IP06E	INSTRUMENT BUS 112 INVERTER - DIV. 12	(16) Battery Chargers and Inverters	N - Back Y - Front	Back panels require extensive disassembly Outage Required	A1R17	IR 1428448	Open

Table E-2 Page 2 of 5

COMPONENT ID	DESCRIPTION	EQUIPMENT CLASS	ACCESSIBLE (Y/N)	IF NOT ACCESSIBLE, WHY?	MILESTONE COMPLETION	TRACKING NUMBER (IR No.)	STATUS / INSPECTION RESULTS
1IP08E	INSTRUMENT BUS 114 INVERTER - DIV. 12	(16) Battery Chargers and Inverters	N - Back Y - Front	Back panels require extensive disassembly Outage Required	A1R17	IR 1428448	Open
0VC01JA	CONT RM HVAC LOCAL CONT PAN ASMBLY	(20) Instrumentation and Control Panels and Cabinets	Y		10/30/12	IR 1428448	Inspection complete, results to be included in a future transmittal
0VC15J	MCR U-1 HVAC START PNL	(20) Instrumentation and Control Panels and Cabinets	Y		10/30/12	IR 1428448	Inspection complete, results to be included in a future transmittal
1PA01J	PROTECTION SYSTEM CABINET (I&E Prot. Cab. CH 1)	(20) Instrumentation and Control Panels and Cabinets	Y		10/30/12	IR 1428448	Inspection complete, results to be included in a future transmittal
1PA03J	PROTECTION SYSTEM CABINET (I&E Prot. Cab. CH 3)	(20) Instrumentation and Control Panels and Cabinets	Y		10/30/12	IR 1428448	Inspection complete, results to be included in a future transmittal

COMPONENT ID	DESCRIPTION	EQUIPMENT CLASS	ACCESSIBLE (Y/N)	IF NOT ACCESSIBLE, WHY?	MILESTONE COMPLETION	TRACKING NUMBER (IR No.)	STATUS / INSPECTION RESULTS
1PA07J	PROC I&C RACK CONT GRP 3 CAB 7	(20) Instrumentation and Control Panels and Cabinets	Y		10/30/12	IR 1428448	Inspection complete, results to be included in a future transmittal
1PA14J	ESF SEQUENCING & ACTUATION CABINET TRAIN B	(20) Instrumentation and Control Panels and Cabinets	Y		10/30/12	IR 1428448	Inspection complete, results to be included in a future transmittal
1PA28J	AUX SAFEGUARD RELAY CABINET (B)	(20) Instrumentation and Control Panels and Cabinets	Y		10/30/12	IR 1428448	Inspection complete, results to be included in a future transmittal
1PA34J	CONTROL SYSTEM CABINET ESF DIV. 12	(20) Instrumentation and Control Panels and Cabinets	Y		10/30/12	IR 1428448	Inspection complete, results to be included in a future transmittal
1PL08J	1B DG CONTROL PANEL	(20) Instrumentation and Control Panels and Cabinets	Y		10/30/12	IR 1428448	Inspection complete, results to be included in a future transmittal

COMPONENT ID	DESCRIPTION	EQUIPMENT CLASS	ACCESSIBLE (Y/N)	IF NOT ACCESSIBLE, WHY?	MILESTONE COMPLETION	TRACKING NUMBER (IR No.)	STATUS / INSPECTION RESULTS
1PM05J	MAIN CONTROL BOARD	(20) Instrumentation and Control Panels and Cabinets	Y		10/30/12	IR 1428448	Inspection complete, results to be included in a future transmittal
1VA11J	CENTRIFUGAL CHARGING PCUBICLE COOLER LOCAL P	(20) Instrumentation and Control Panels and Cabinets	Y		A1R17	IR 1428448	Open
1VD05J	1B DG RM HVAC DMPR START PNL	(20) Instrumentation and Control Panels and Cabinets	Y		10/30/12	IR 1428448	Inspection complete, results to be included in a future transmittal
1VX07J	ESF SWGR RM DIV 12 HVAC DMPR START PNL	(20) Instrumentation and Control Panels and Cabinets	Y		10/30/12	IR 1428448	Inspection complete, results to be included in a future transmittal
1HS-FC001	SPENT FUEL PIT PUMP	(18) Instrument Racks	Y		A1R17	IR 1428448	Open

F

Peer Review Report

This appendix includes the Peer Review Team's report, including the signed Peer Review Checklist for SWEL from Appendix F of the EPRI guidance document. (Ref. 1)

Peer Review Report
For
Near Term Task Force (NTTF) Recommendation 2.3
Seismic Walkdown Inspection
of
Braidwood Nuclear Station Unit 1

September 23, 2012

Prepared by Peer Reviewers

Bruce M. Lory (Team Leader)

Walter Djordjevic

Todd A. Bacon

Tribhawan K. Ram

Bruce M. Lory	2012
Peer Review Team Leader Certification Signature	Date 09/23/12

Bruce M. Lory

1 Introduction

1.1 OVERVIEW

This report documents the independent peer review for the Near Term Task Force (NTTF) Recommendation 2.3 Seismic Walkdowns performed by Stevenson & Associates (S&A) for Unit 1 of Braidwood Nuclear Station (BNS). The peer review addresses the following activities:

- Review of the selection of the structures, systems, and components, (SSCs) that are included in the Seismic Walkdown Equipment List (SWEL)
- Review of a sample of the checklists prepared for the Seismic Walkdowns & Walk-Bys
- Review of any licensing basis evaluations
- Review of the decisions for entering the potentially adverse conditions in to the plant's Corrective Action Plan (CAP)
- Review of the final submittal report

1.2 PEER REVIEWERS

The peer reviewers for BNS, Unit 1 are Messrs. Walter Djordjevic, Bruce M. Lory, Todd Bacon, and Tribhawan K. Ram, all of S&A. Mr. Lory is designated the Peer Review Team Leader. Mr. Djordjevic served as Peer Review Team Leader for SWEL development. None of the aforementioned engineers is involved in the seismic walkdown inspection process so that they can maintain their independence from the project. Mr. Djordjevic is an advanced degree structural engineer and has over thirty years of nuclear seismic experience and has been trained as a Seismic Capability Engineer (EPRI SQUG training), EPRI IPEEE Add-on, Seismic Fragility and Seismic Walkdown Engineer (SWE) training. Mr. Lory is a mechanical engineer with 33 years of experience, has been trained as a Seismic Capability Engineer (EPRI SQUG training), is instructor of the Fundamentals of Equipment Seismic Qualification training course for EPRI, and is the co-instructor of the Fukushima Seismic Walkdown training course in response to NTTF 2.3. Mr. Ram is an advanced degree nuclear engineer with over 25 years of nuclear power plant experience. Mr. Lory led the seismic peer review activities and Mr. Djordjevic led the SWEL selection peer review.

1.3 SWEL DEVELOPMENT

The SWEL development was performed by Mr. Kim Hull of S&A. The peer review of the SWEL development was concurrent with the SWEL development and any revisions to the SWEL after initial plant acceptance were peer reviewed before approval. The completed SWEL Peer Review Checklist is found in Attachment 1. The discussion for the SWEL development peer review is found in Section 2.

1.4 SEISMIC WALKDOWN INSPECTION

The peer review of the seismic walkdown inspection started on July 31, 2012 with a peer check of the actual walkdowns for Braidwood Unit 2 by Mr. Todd Bacon. Mr. Bacon joined the walkdown team for a portion of the day's planned walkdowns to observe the conduct of walkdowns and adherence to the Seismic Walkdown Guidance (SWG)¹. No additional peer review site visits were made for the Unit 1 walkdown as the same procedures were implemented and nearly the same SWEL equipment was inspected. However, an interview was conducted by Messrs. Djordjevic and Lory with the SWE inspection team on September 7, 2012 after review of a sample of the Unit 1 Seismic Walkdown Checklists (SWC) and Area Walk-By Checklists (AWC) to ascertain the quality and procedural compliance with the SWG. The discussion of the sample SWC and AWC is provided in Section 3.

¹ Seismic Walkdown Guidance For Resolution of Fukushima Near-Term Task Force Recommendation 2.3: Seismic, EPRI Report 1025286, June 2012.

2 Peer Review - Selection of SSCs

2.1 PEER REVIEW ACTIVITY – SELECTION OF SSCs

The guidance in EPRI Technical Report 1025286, *Seismic Walkdown Guidance for Resolution of Fukushima Near-Term Task Force Recommendation 2.3: Seismic*, dated June 2012 (Reference 1), Section 3: Selection of SSCs was used as the basis for this review.

This peer review was based on reviews of the following documents:

- UFSAR chapters 3, 6, 7, 8 and 9
- SWEL 1 & SWEL 2
- P&ID M-63: Fuel Pool Cooling and Clean-Up

This peer review was based on interviews with the following individual(s) who was (were) directly responsible for development of the SWEL:

- Kim Hull

This peer review utilized the checklist shown in Reference 1 Appendix F: Checklist for Peer Review of SSC Selection.

2.2 SWEL 1 DEVELOPMENT

For SWEL 1 development, the following actions were completed in the peer review process:

1. **Verification that the SSCs selected represented a diverse sample of the equipment required to perform the following five safety functions:**
 - A. Reactor Reactivity Control (RRC)
 - B. Reactor Coolant Pressure Control (RCPC)
 - C. Reactor Coolant Inventory Control (RCIC)
 - D. Decay Heat Removal (DHR)
 - E. Containment Function (CF)

This peer review determined that the SSCs selected for the seismic walkdowns represent a diverse sample of equipment required to perform the five safety functions. This conclusion was based on a review of UFSAR chapters 3, 6, 7, 8 and

9 and SWEL 1 which determined that all five safety functions (RRC, RCPC, RCIC, DHR, and CF) are adequately represented.

2. Verification that the SSCs selected include an appropriate representation of items having the following sample selection attributes:

- A. Various types of systems
- B. Major new and replacement equipment
- C. Various types of equipment
- D. Various environments
- E. Equipment enhanced based on the findings of the IPEEE
- F. Risk insight consideration

This peer review determined that the SSCs selected for the seismic walkdowns include a sample of items that represent each attribute/consideration identified above. The justification for this conclusion is: a) Based on a review of UFSAR chapters referenced above and SWEL 1 list, it was determined that appropriate variety of equipment and systems are represented (e.g., EDG, Component Cooling, Aux Feed, Charging, Essential Service WTR, RHR, Batteries, Battery Chargers, Low and Med Vol Switchgear and MCCs); b) The "New or Replace" equipment are indicated as such; c) A variety of location environments are included: e.g., MCCs (Auxiliary @ EL: 346, 383, and 426), Pumps (Auxiliary @ EL: 330, 364, and 383), Tanks and Heat Exchangers (Auxiliary and Containment), and Valves (Auxiliary and Containment); d) The IPEEE Enhancement related equipment is indicated as such; and e) The risk quantification has been included in the "Comments" column.

Note: Because of accessibility reasons, some equipment has appropriately been deferred to Outage.

2.3 SWEL 2 DEVELOPMENT

For SWEL 2 development, the following actions were completed in the peer review process:

1. Verification that SFP related items were considered and appropriately added to SWEL 2.

This peer review determined that spent fuel pool cooling system Seismic CAT 1 items were given appropriate consideration and included on the list. This determination is based on a review SWEL 2 list, FSAR chapters 3 and 9, and FP Cooling and Clean-Up System P&ID M-63.

2. Verification that appropriate justification was documented for spent fuel pool related items that were not added to the SWEL 2.

This peer review determined that an appropriate level of justification was documented for those items related to the spent fuel pool that were not added to SWEL 2. The justification for not including any Seismic Category I Structure has appropriately been documented in the interim report. There are no rapid drain down related components in SWEL2. Appropriate justification for this item is included in the interim report as well.

2.4 PEER REVIEW FINDINGS – SELECTION OF SSCs

This peer review found that the process for selecting SSCs that were added to the SWEL was consistent with the process outlined in Reference 1 Section 3: Selection of SSCs.

The peer review checklist is attached to this document.

This peer review resulted in no additional findings.

2.4.1 Resolution of Peer Review Comments – Selection of SSCs

All comments requiring resolution were incorporated prior to completion of this peer review.

2.4.2 Conclusion of Peer Review – Selection of SSCs

This peer review concludes that the process for selecting SSCs to be included on the seismic walkdown equipment list appropriately followed the process outlined in Reference 1, Section 3: Selection of SSCs. It is further concluded that the SWEL sufficiently represents a broad population of plant Seismic Category 1 equipment and systems to meet the objectives of the NRC 50.54(f) Letter.

2.4.3 References

- 1) EPRI Technical Report 1025286, *Seismic Walkdown Guidance for Resolution of Fukushima Near-Term Task Force Recommendation 2.3: Seismic*, dated June 2012

3 Review of Sample Seismic Walkdown & Area Walk-Bys Checklists

3.1 OVERVIEW

A peer review of the SWCs and AWCs was performed along with an interview which was conducted by Messrs. Djordjevic and Lory with the SWE inspection team in accordance with the SWG requirements. The SWE trained walkdown engineers were Messrs. Marlene Delaney and Phil Gazda.

3.2 SAMPLE CHECKLISTS

Table 3-1 lists the SWC and AWC samples which represent 13% of the SWC and 25% of the AWC. The sample includes the equipment inspected during the peer review and other equipment items from other classes to introduce diversity to the sampling procedure.

Table 3-1: Table of SWC and AWC Samples from Seismic Walkdown Inspection for Unit 1

Equipment Identification	Equip Class	Walkdown Item	Observations
0FC03PA	5	Pump Refueling Water Purification 0A Assembly	Anchorage question 5 – need to elaborate why contaminated pump prevented anchorage verification or delete statement.
0FC8754	0	Spent Fuel Pit HX Return Isolation Valve	No concerns
0LS-FC010	18	Spent Fuel Pool Level Switch	Anchorage questions 1 & 5 are unanswered. Response to question 1 needs to be “No” and to question 5 needs to be “Not Applicable”
0PI-FC005	18	Refueling Water Purification Pump 0A Discharge Gauge	No concerns
0VC01FB	10	0B MCR HVAC SUP Filters	No concerns
0VC05YA	10	Isolation Butterfly Damper	No concerns
0VC08Y	10	Train B Makeup Air Filter Unit Fan 0B Discharge Flow Control	No concerns
0VC15J	20	MCR U-1 HVAC Start Panel	No concerns
0WO01CB	11	Chilled Water System Control Rm Refrigeration Unit 0B	No concerns

Equipment Identification	Equip (GIP) Class	Walkdown Item	Observations
1AF005E	7	S/G 1A Flow Control Valve Assembly	No concerns
1AF01EA-A	15	AF Pump 1B Battery Charger	No concerns
1AF01PB	5	Diesel Driven Aux Feed Pump 1B	No concerns
1AF024	7	AF PP SX Recirc Valve	No concerns
1AP05E	3	4160V ESF Switchgear 141	Questions identified as "Unknown" need to be resolved to "Yes/No" or identify switchgear in submittal report as being walked down later.
1DC06E	14	125 VDC ESF Distr Center 112	Dwg. 20E-0-3391C shows shorter length fillet welds on 12" centers. Hence as-installed anchorage has higher seismic capacity than as-designed. Interview of SWEs indicates they informed licensee of mismatch between as-designed and as-installed anchorage config. SWEs left it up to licensee to write IR. Acceptable but IR could have been written since as-installed anchorage does not match design drawing.
1PA28J	20	Aux Safeguard Relay Cabinet	SWEs noted longer welds on shorter spacing than shown on Dwg. 20E-0-3391C. Hence as-installed anchorage has higher seismic capacity than as-designed. Interview of SWEs indicates they informed licensee of mismatch between as-designed and as-installed anchorage config. SWEs left it up to licensee to write IR. Acceptable but IR could have been written since as-installed anchorage does not match design drawing.

Area Walkdown Description	Observations
AWC 11-Aux Elect, 401ft, Diesel RM 18	No concerns
AWC 02-Aux Elect, 401 ft, Control rm.	No concerns
AWC 01-Aux451 ft, Aux	No concerns

Elect (1PA01J)	
AWC 04-451 ft, HVAC rm.	No concerns
AWC 03-Aux Bldg, 463 ft, HVAC G	No concerns
AWC 04- Aux Bldg. 451 ft (Div 11-1DC01J)	No concerns
AWC 06- Aux Bldg. 451 ft (Div 112 Battery rm)	No concerns
AWC 07- Aux Bldg. 451 ft (Div 111 Battery rm)	No concerns
Area Walkdown Description	Observations
AWC 08- Aux Bldg. 451 ft (MEER Rm)	No concerns
AWC 09-Aux Bldg. 426 ft (ESF SW by 1AP10E)	No concerns
AWC 10- Aux Bldg. 451 ft (ESF SW b 1AP12E)	No concerns

3.3 EVALUATION OF FINDINGS

There were no findings of seismic significance. The scaffolding and seismic housekeeping procedures was reviewed by the SWEs in order to gain a full understanding of the plant practices in regard to those procedures. There were no significant concerns noted in Unit 1 with regard to scaffold erection.

With regard to seismic housekeeping, there were numerous instances cabinets being placed in unapproved locations. Braidwood procedure BwAP 1100-23 – “Seismic Housekeeping Requirements for the Temporary Storage of Materials in Category 1 Areas” was reviewed and IRs created to provide the appropriate disposition.

Generally, if they were found to not to contribute to a credible seismic interaction they were adjudged acceptable and not dispositioned to an IR. Similarly, if an item posed a potential proximity hazard to a vital component and it was removed “on the spot” in accordance with the housekeeping procedure then it was also not dispositioned to an IR. However, in all instances the Seismic Walkdown Checklist (SWC) document the details of the occurrence, the action taken (if any) and the conclusion rendered by the SWE inspectors. Importantly, if the situation warranted a correction then an IR was specifically generated for that component or area in the case of area walk-bys.

It is recommended that when maintenance activities are undertaken that attention be given with regard to storage of temporary equipment/cabinets.

4 Review of Licensing Basis Assessments

4.1 OVERVIEW

Because none of the issues identified during the Seismic Walkdowns or Area Walk-Bys were determined to be "Potentially Adverse Seismic Conditions, no Licensing Basis Evaluations were required.

5 Review Final Submittal Report & Sign-off

The entire final submittal report has been reviewed by Messrs. W. Djordjevic and B. Lory and found to meet the requirements of the EPRI 1025286 – Seismic Walkdown Guidance (Ref. 1).

Peer Review Checklist for SWEL**Instructions for Completing Checklist**

This peer review checklist may be used to document the review of the Seismic Walkdown Equipment List (SWEL) in accordance with Section 6: Peer Review. The space below each question in this checklist should be used to describe any findings identified during the peer review process and how the SWEL may have changed to address those findings. Additional space is provided at the end of this checklist for documenting other comments.

-
1. Were the five safety functions adequately represented in the SWEL 1 selection? Y N
Appropriate equipment has been included to maintain the five safety functions: RPC, DHR, RCIC, RCPC, and CF
-
2. Does SWEL 1 include an appropriate representation of items having the following sample selection attributes:
- a. Various types of systems? Y N
Various system types have been included (e.g., RX Trip Breakers, Charging Pump, PORVs, Aux Feed Pump, RHR Pump, Chiller, CCW Pump, Essential SW Pump, and support systems such as DC, MCCs, Batteries, and HVAC).
- b. Major new and replacement equipment? Y N
"New or Replace" equipment are included in the list.
- c. Various types of equipment? Y N
The equipment represents all required 21 types except 12 and 13. The screenings #1, #2, and #3 resulted in no equipment in the latter two categories.
- d. Various environments? Y N
Appropriate environments have been included (e. g., Containment and Auxiliary buildings)
- e. Equipment enhanced based on the findings of the IPEEE (or equivalent) program? Y N
Included as indicated in the column, "IPEEE Enhancement."

Peer Review Checklist for SWEL

f. Were risk insights considered in the development of SWEL 1?
Risk quantifications provided in the "Comments" column Y N


3. For SWEL 2:


a. Were spent fuel pool related items considered, and if applicable included in SWEL 2?
Seismic CAT 1 items have been included; none are associated with SFP rapid draindown. Y N

b. Was an appropriate justification documented for spent fuel pool related items not included in SWEL 2?
Provided in the Submittal Report Y N

4. Provide any other comments related to the peer review of the SWELs.

5. Have all peer review comments been adequately addressed in the final SWEL? Y N

Peer Reviewer #1: TK Ram  Date: 7/23/12

Peer Reviewer #2: Walter Djordjevic  Date: 8/18/12

G IPEEE Vulnerability Status

Table G-1 lists the plant improvements, the IPEEE/SQUG proposed resolution, the actual resolution and resolution date.

Table G-1. IPEEE Improvements Status

Equipment ID	Description of Condition / Vulnerability*	IPEEE Report Proposed Resolution of Condition**	Actual Resolution of Condition	Resolution Date
2FT-AF011 2FT-AF012 2FT-AF013 2FT-AF014 2FT-AF015 2FT-AF016 2FT-AF017 2FT-AF018 Flow Transmitters	Flow transmitters adjacent to Recycle Monitor tanks (1&2AB02T) which are unanchored; thus they pose a potential flooding hazard to the transmitters on the adjacent nearby instrument rack.	Tank has been shown to maintain its integrity well beyond RLE demand level by CDFM capacity analysis.	Tank has been shown to maintain its integrity well beyond RLE demand level by CDFM capacity.	11/12/2012
2AP22E	Potential Seismic interaction concern with adjacent EMT equipment locker.	EMT equipment locker has been relocated to eliminate the interaction risk.	EMT equipment locker has been relocated to eliminate the interaction risk.	6/27/1997
1CV112E 2CV112E Valves	Operator is in contact with adjacent pipe/grating which poses an impact hazard.	Evaluate clearance requirements and effect on valve and pipe system	Evaluations have determined that the affected piping systems and valve are adequate with the reduced clearance. 2CV112E tracked by IR 1429477	3/17/1999 11/02/2012

Equipment ID	Description of Condition / Vulnerability*	IPEEE Report Proposed Resolution of Condition**	Actual Resolution of Condition	Resolution Date
2AP38E	1) Interaction hazard due to MCC not bolted to adjacent cubicle in line-up. 2) A radioactive material storage box and dollies are also stored nearby and pose a potential interaction hazard.	1) Interaction will be evaluated on a case-by-case basis. Bolt adjacent MCCs together as required. 2) Items have been relocated so as not to pose an interaction risk.	1) Cabinet is bolted to adjacent cabinet. 2) Items have been relocated so as not to pose an interaction risk.	11/15/2003 11/27/1997
1AP22E	Gas cylinder adjacent to MCC had both restraint chains missing – an example of poor seismic housekeeping. Also, an adjacent copper line behind the MCC is corroded; however, it was adjudged not to have the potential to collapse onto the MCC.	Restraint chains have been replaced eliminating the potential interaction risk.	Restraint chains have been replaced eliminating the potential interaction risk.	6/27/1997
1IY0606	Argon gas cylinder adjacent to MCC had one restraint chain missing.	The missing restraint chain has been replaced eliminating the potential interaction risk	The missing restraint chain has been replaced eliminating the potential interaction risk	6/27/1997
1AP27E 2AP27E Motor Control Centers	Seismic interaction concern. Not tied (bolted) to adjacent MCC 1(2)AP47E and may impact MCC during seismic event.	Interaction will be evaluated on a case-by-case basis. Bolt adjacent MCCs together as required.	Interaction will be evaluated on a case-by-case basis. Bolt adjacent MCCs together as required.	MCC's are bolted to adjacent MCC's. 7/31/2003 11/15/2003

Table G-1 Page 2 of 6

Equipment ID	Description of Condition / Vulnerability*	IPEEE Report Proposed Resolution of Condition**	Actual Resolution of Condition	Resolution Date
1(2)DG01KA 1(2)DG01KB	Potential if overhead hoist is parked near jacket water cooler because chain fall from hoist could impact sight glass on cooler. None of the 4 hoists were found in this condition, but no procedure exists as to where the hoist is parked during outages.	Hoists have been relocated and chains have been secured to eliminate potential interaction. Direction to be provided in work package process.	Hoists have been relocated and chains have been secured.	6/27/1997
2SX112B	Outlier due to power cable pull box in contact with overhead steel	The potential interaction will be evaluated.	Condulet and solenoid valve were adjusted in field to provide additional clearances. W/O 98108903-01	10/19/1999
1(2)SX178	Outlier due to seismic interaction (impact) potential with adjacent structural member.	The potential interaction will be evaluated.	Evaluated Found Acceptable ECR 75963	3/26/1999
1(2)PL07J 1(2)PL08J	Interaction hazard due to a hearing booth (like a portable phone booth on legs) adjacent to panel which, even though item is chained off, can still roll into panel or tip over into panel.	Hearing booths will be relocated or properly secured to eliminate the potential seismic interaction.	Hearing booths were relocated and chained to eliminate potential seismic interaction. ECR 82983	8/24/2000
2DC02E Station Batteries	1) Overhead lights hung on chains with open S-hooks.	S-hooks have been closed.	S-hooks have been closed.	6/27/1997

Table G-1 Page 3 of 6

Equipment ID	Description of Condition / Vulnerability*	IPEEE Report Proposed Resolution of Condition**	Actual Resolution of Condition	Resolution Date
1(2)DC03E 1(2)DC05E Battery Charger & Distribution Center Bus	Adjacent cabinets not bolted together.	Interaction will be evaluated on a case-by-case basis. Bolt adjacent cabinets together as required.	Interactions were evaluated that addressed the loads for panels and concluded that they were acceptable when linked together.	7/31/2003 11/15/2003
1PL04J 1PL05J 1PL06J	Overhead light on chains is unlatched – maintenance item	The chain has been reattached.	The chain has been reattached.	6/27/1997
(2)DC04E (2)DC06E Battery Charger & Distribution Center Bus	Adjacent cabinets not bolted together.	Interaction will be evaluated on a case-by-case basis. Bolt adjacent cabinets together as required.	Interactions were evaluated that addressed the loads for panels and concluded that they were acceptable when linked together.	11/15/2003
1RD05E 2RD05E Reactor Trip Switchgear	Seismic interaction concern. Not tied (bolted) to adjacent 1(2)RD03E. May impact during seismic event	Interaction will be evaluated on a case-by-case basis. Bolt adjacent cabinets together as required.	Interactions were evaluated that addressed the loads for panels and concluded that they were acceptable when linked together.	7/31/2003 11/15/2003

Equipment ID	Description of Condition / Vulnerability*	IPEEE Report Proposed Resolution of Condition**	Actual Resolution of Condition	Resolution Date
1TE0674	An adjacent 12" diameter line is only 1" away from the temperature element. The pipe is hung on a flexible 8' long rod hanger (no lateral supports) @ 10'. The calculated spectral displacement of the pipe in question exceeds the 1" clearance.	The clearance requirements and the potential effect on the temperature element will be evaluated.	This item was closed by ECR 362265 and WO 99006174	02/02/06
0PM01J 0PM02J 1PM01J 1PM04J 1PM05J 1PM06J 1PM07J 1PM11J 1PM12J 2PM01J 2PM04J 2PM05J 2PM06J 2PM07J 2PM11J 2PM12J Main Control Panels	<p>1) Unsecured aluminum diffusers in suspended ceiling pose a personnel hazard to operators if they are dislodged due to seismic motion.</p> <p>2) Interaction concerns with items in control room in proximity of cabinets such as lockers, copiers, tables and filing cabinets.</p> <p>3) Emergency light 011 (wall mounted) is unsecured and located behind one of the control room panels.</p>	<p>1) Diffusers will be secured to support grid.</p> <p>2) Several items have been removed from control room. Other items will be removed or relocated as required.</p> <p>3) Hold down bolts has been added to secure the light housing to the mounting bracket.</p>	<p>1) Analysis was performed which evaluated the MRC Egg crate panels (ceiling diffusers) capability for withstanding a seismic event of a magnitude required by the IPEEE without an adverse effect. Conclusively the MRC ceiling diffusers are capable of withstanding a seismic event of a magnitude required by IPEEE without adverse effect.</p> <p>2) Lockers anchored to concrete wall. Seismic housekeeping takes care of this.</p> <p>3) Hold down bolts has been added to secure the light housing to the mounting bracket.</p>	<p>9/18/2003</p> <p>5/30/2001</p> <p>6/27/1997</p>

Equipment ID	Description of Condition / Vulnerability*	IPEEE Report Proposed Resolution of Condition**	Actual Resolution of Condition	Resolution Date
1(2)PA01J 1(2)PA02J 1(2)PA03J 1(2)PA04J 1(2)PA06J 1(2)PA07J 1(2)PA08J 1(2)PA09J 1(2)PA10J 1(2)PA11J 1(2)PA12J 1(2)PA13J 1(2)PA14J 1(2)PA27J 1(2)PA28J 1(2)PA33J 1(2)PA34J 1(2)PA51J 1(2)PA52J Auxiliary Panels	1) Adjacent cabinets not bolted together. 2) Also have instrument cart (or wooden table) in proximity of cabinet.	1) Interaction will be evaluated on a case-by-case basis. Bolt adjacent cabinets together as required. 2) IM equipment to be stored/secured away from cabinets when not in use.	1) Interactions were evaluated that addressed the loads for panels and concluded that they were acceptable when linked together. 2) IM equipment was stored away from cabinets when not in use.	7/31/2003 11/15/2003 6/27/1997

* IPEEE "Vulnerability" = Vulnerability, Outlier, Anomaly, Enhancement, Finding, etc...

** If this is different than the original planned, else N/A