

Status: Y N U

Seismic Walkdown Checklist (SWC)

Equipment ID No.: 1FC8762B

Equipment Class: (0) Other

Equipment Description: U1 SPENT FUEL PIT HX OUTLET VALVE

Project: Braidwood 1 SWEL

Location (Bldg, Elev, Room/Area): FH, 401.00 ft, ALL

Manufacturer/Model:

Instructions for Completing Checklist

This checklist may be used to document the results of the Seismic Walkdown of an item of equipment on the SWEL. The space below each of the following questions may be used to record the results of judgments and findings. Additional space is provided at the end of this checklist for documenting other comments.

Anchorage

1. Is anchorage configuration verification required (i.e., is the item one of the 50% of SWEL items requiring such verification)? No

2. Is the anchorage free of bent, broken, missing or loose hardware? Not Applicable

3. Is the anchorage free of corrosion that is more than mild surface oxidation? Not Applicable

4. Is the anchorage free of visible cracks in the concrete near the anchors? Not Applicable

5. Is the anchorage configuration consistent with plant documentation? (Note: This question only applies if the item is one of the 50% for which an anchorage configuration verification is required.) Not Applicable

6. Based on the above anchorage evaluations, is the anchorage free of potentially adverse seismic conditions? Yes

Status: Y N U

Seismic Walkdown Checklist (SWC)

Equipment ID No.: 1FC8762B

Equipment Class: (0) Other

Equipment Description: U1 SPENT FUEL PIT HX OUTLET VALVE

Interaction Effects

7. Are soft targets free from impact by nearby equipment or structures? Yes
8. Are overhead equipment, distribution systems, ceiling tiles and lighting, and masonry block walls not likely to collapse onto the equipment? Yes
9. Do attached lines have adequate flexibility to avoid damage? Yes
10. Based on the above seismic interaction evaluations, is equipment free of potentially adverse seismic interaction effects? Yes

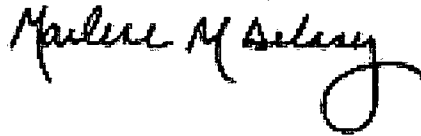
Other Adverse Conditions

11. Have you looked for and found no adverse seismic conditions that could adversely affect the safety functions of the equipment? Yes
Rugged and well-supported valve.

Comments

Seismic walkdown performed week of 7/16/12 by M. Delaney & P. Gazda

Evaluated by:



Marlene Delaney

Date: 10/1/2012



Philip Gazda

10/1/2012

Status: Y N U

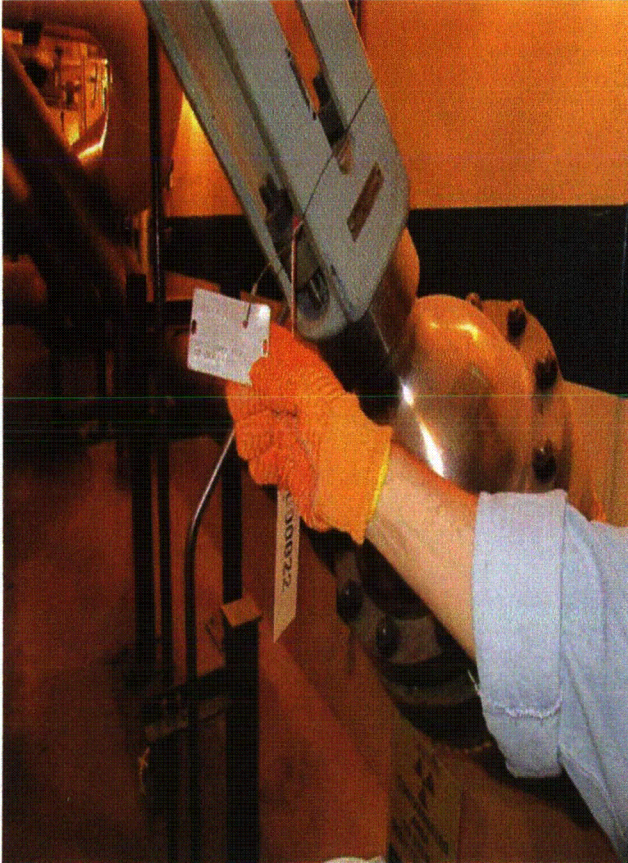
Seismic Walkdown Checklist (SWC)

Equipment ID No.: 1FC8762B

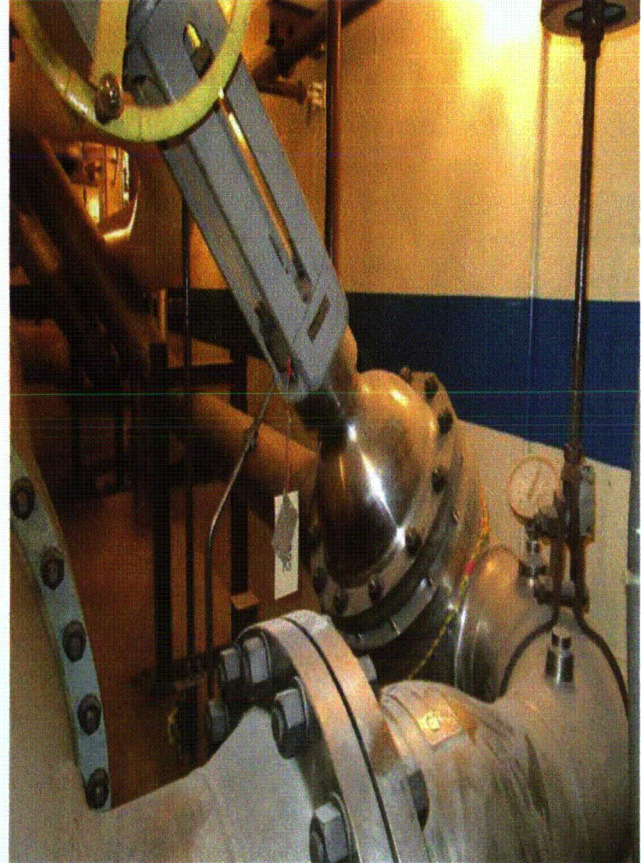
Equipment Class: (0) Other

Equipment Description: U1 SPENT FUEL PIT HX OUTLET VALVE

Photos



1FC8762B 7-18-12 066



1FC8762B 7-18-12 067

Status: Y N U

Seismic Walkdown Checklist (SWC)

Equipment ID No.: 1FC8766

Equipment Class: (0) Other

Equipment Description: SPENT FUEL PIT FLTR DEMIN LOOP RTRN TO U-1 RWST CHECK VLV

Project: Braidwood 1 SWEL

Location (Bldg, Elev, Room/Area): Auxiliary, 364.00 ft, ALL

Manufacturer/Model:

Instructions for Completing Checklist

This checklist may be used to document the results of the Seismic Walkdown of an item of equipment on the SWEL. The space below each of the following questions may be used to record the results of judgments and findings. Additional space is provided at the end of this checklist for documenting other comments.

Anchorage

1. Is anchorage configuration verification required (i.e., is the item one of the 50% of SWEL items requiring such verification)? No

2. Is the anchorage free of bent, broken, missing or loose hardware? Not Applicable

3. Is the anchorage free of corrosion that is more than mild surface oxidation? Not Applicable

4. Is the anchorage free of visible cracks in the concrete near the anchors? Not Applicable

5. Is the anchorage configuration consistent with plant documentation? (Note: This question only applies if the item is one of the 50% for which an anchorage configuration verification is required.) Not Applicable

6. Based on the above anchorage evaluations, is the anchorage free of potentially adverse seismic conditions? Yes

Status: Y N U

Seismic Walkdown Checklist (SWC)

Equipment ID No.: 1FC8766

Equipment Class: (0) Other

Equipment Description: SPENT FUEL PIT FLTR DEMIN LOOP RTRN TO U-1 RWST CHECK VLV

Interaction Effects

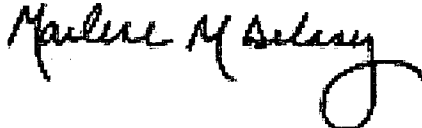
7. Are soft targets free from impact by nearby equipment or structures? Yes
8. Are overhead equipment, distribution systems, ceiling tiles and lighting, and masonry block walls not likely to collapse onto the equipment? Yes
9. Do attached lines have adequate flexibility to avoid damage? Yes
10. Based on the above seismic interaction evaluations, is equipment free of potentially adverse seismic interaction effects? Yes

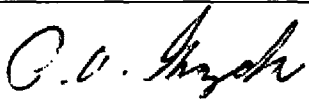
Other Adverse Conditions

11. Have you looked for and found no adverse seismic conditions that could adversely affect the safety functions of the equipment? Yes
Support at check valve

Comments

Seismic walkdown performed week of 7/16/12 by M. Delaney & P. Gazda

Evaluated by:  Marlene Delaney Date: 10/1/2012

 Philip Gazda 10/1/2012

Status: Y N U

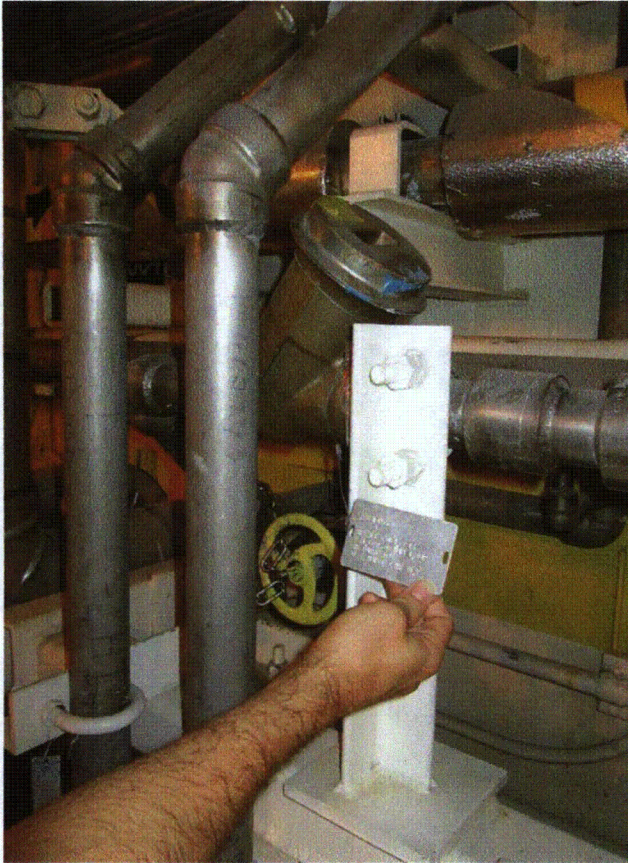
Seismic Walkdown Checklist (SWC)

Equipment ID No.: 1FC8766

Equipment Class: (0) Other

Equipment Description: SPENT FUEL PIT FLTR DEMIN LOOP RTRN TO U-1 RWST CHECK VLV

Photos



FC8766 7-19-12 Group 2 008

Status: Y N U

Seismic Walkdown Checklist (SWC)

Equipment ID No.: 1FC8793

Equipment Class: (0) Other

Equipment Description: SPENT FUEL PIT PMP DISCH CHECK VALVE

Project: Braidwood 1 SWEL

Location (Bldg, Elev, Room/Area): FH, 401.00 ft, ALL

Manufacturer/Model:

Instructions for Completing Checklist

This checklist may be used to document the results of the Seismic Walkdown of an item of equipment on the SWEL. The space below each of the following questions may be used to record the results of judgments and findings. Additional space is provided at the end of this checklist for documenting other comments.

Anchorage

1. Is anchorage configuration verification required (i.e., is the item one of the 50% of SWEL items requiring such verification)? No

2. Is the anchorage free of bent, broken, missing or loose hardware? Not Applicable

3. Is the anchorage free of corrosion that is more than mild surface oxidation? Not Applicable

4. Is the anchorage free of visible cracks in the concrete near the anchors? Not Applicable

5. Is the anchorage configuration consistent with plant documentation? (Note: This question only applies if the item is one of the 50% for which an anchorage configuration verification is required.) Not Applicable

6. Based on the above anchorage evaluations, is the anchorage free of potentially adverse seismic conditions? Yes

Status: Y N U

Seismic Walkdown Checklist (SWC)

Equipment ID No.: 1FC8793

Equipment Class: (0) Other

Equipment Description: SPENT FUEL PIT PMP DISCH CHECK VALVE

Interaction Effects

7. Are soft targets free from impact by nearby equipment or structures? Yes
8. Are overhead equipment, distribution systems, ceiling tiles and lighting, and masonry block walls not likely to collapse onto the equipment? Yes
9. Do attached lines have adequate flexibility to avoid damage? Yes
10. Based on the above seismic interaction evaluations, is equipment free of potentially adverse seismic interaction effects? Yes

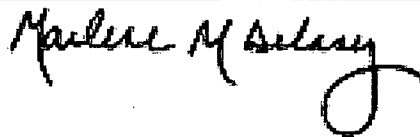
Other Adverse Conditions

11. Have you looked for and found no adverse seismic conditions that could adversely affect the safety functions of the equipment? Yes
Boric Acid leak identified on tag. No adverse seismic impact.

Comments

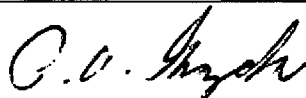
Seismic walkdown performed week of 7/16/12 by M. Delaney & P. Gazda

Evaluated by:



Marlene Delaney

Date: 10/1/2012



Philip Gazda

10/1/2012

Status: Y N U

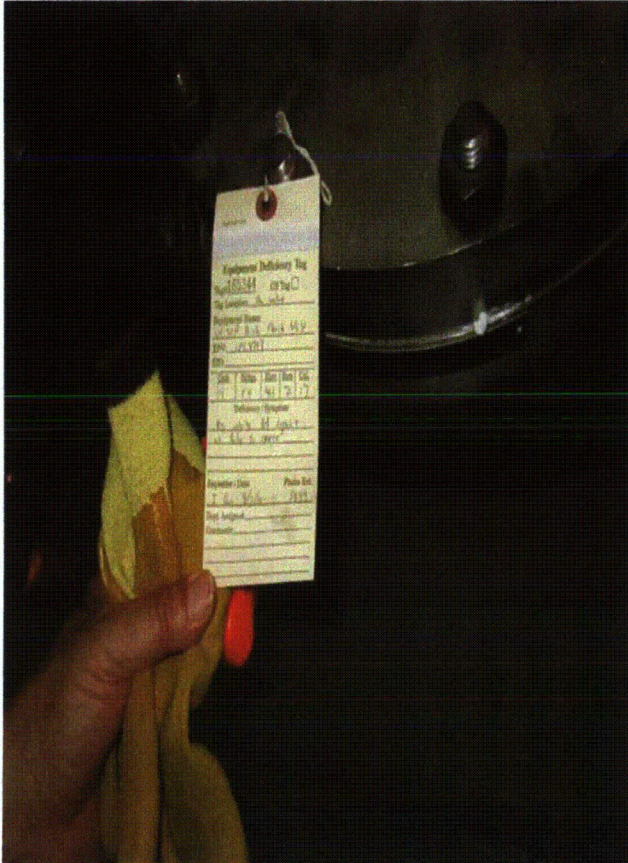
Seismic Walkdown Checklist (SWC)

Equipment ID No.: 1FC8793

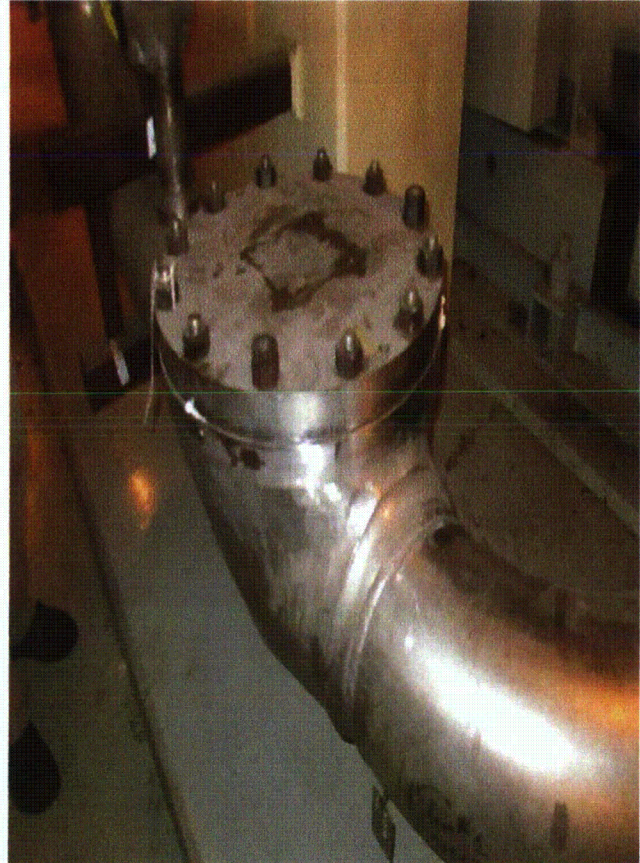
Equipment Class: (0) Other

Equipment Description: SPENT FUEL PIT PMP DISCH CHECK VALVE

Photos



1FC8793 7-18-12 072



1FC8793 7-18-12 073

Status: Y N U

Seismic Walkdown Checklist (SWC)

Equipment ID No.: 1FC8793

Equipment Class: (0) Other

Equipment Description: SPENT FUEL PIT PMP DISCH CHECK VALVE



1FC8793 7-18-12 074

Status: Y N U

Seismic Walkdown Checklist (SWC)

Equipment ID No.: 1FC8794

Equipment Class: (0) Other

Equipment Description: SPENT FUEL PIT FLTR DEMIN LOOP INLT ISOL VALVE

Project: Braidwood 1 SWEL

Location (Bldg, Elev, Room/Area): FH, 401.00 ft, ALL

Manufacturer/Model:

Instructions for Completing Checklist

This checklist may be used to document the results of the Seismic Walkdown of an item of equipment on the SWEL. The space below each of the following questions may be used to record the results of judgments and findings. Additional space is provided at the end of this checklist for documenting other comments.

Anchorage

1. Is anchorage configuration verification required (i.e., is the item one of the 50% of SWEL items requiring such verification)? No

2. Is the anchorage free of bent, broken, missing or loose hardware? Not Applicable

3. Is the anchorage free of corrosion that is more than mild surface oxidation? Not Applicable

4. Is the anchorage free of visible cracks in the concrete near the anchors? Not Applicable

5. Is the anchorage configuration consistent with plant documentation? (Note: This question only applies if the item is one of the 50% for which an anchorage configuration verification is required.) Not Applicable

6. Based on the above anchorage evaluations, is the anchorage free of potentially adverse seismic conditions? Yes

Status: Y N U

Seismic Walkdown Checklist (SWC)

Equipment ID No.: 1FC8794

Equipment Class: (0) Other

Equipment Description: SPENT FUEL PIT FLTR DEMIN LOOP INLT ISOL VALVE

Interaction Effects

7. Are soft targets free from impact by nearby equipment or structures? Yes
8. Are overhead equipment, distribution systems, ceiling tiles and lighting, and masonry block walls not likely to collapse onto the equipment? Yes
9. Do attached lines have adequate flexibility to avoid damage? Yes
10. Based on the above seismic interaction evaluations, is equipment free of potentially adverse seismic interaction effects? Yes

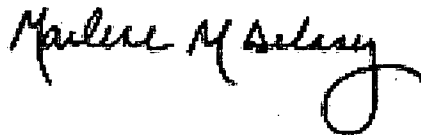
Other Adverse Conditions

11. Have you looked for and found no adverse seismic conditions that could adversely affect the safety functions of the equipment? Yes
Well-supported

Comments

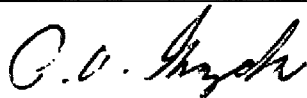
Seismic walkdown performed week of 7/16/12 by M. Delaney & P. Gazda

Evaluated by:



Marlene Delaney

Date: 10/1/2012



Philip Gazda

10/1/2012

Status: Y N U

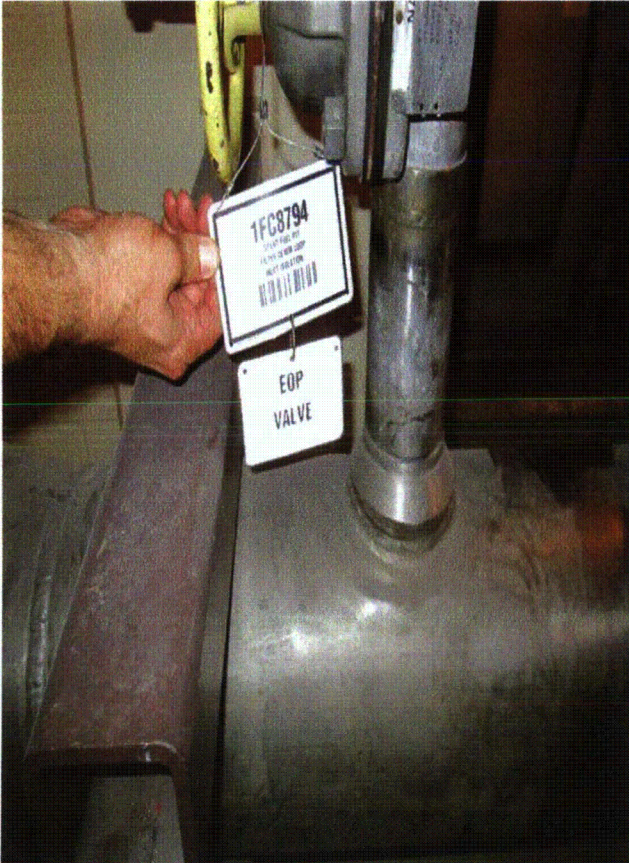
Seismic Walkdown Checklist (SWC)

Equipment ID No.: 1FC8794

Equipment Class: (0) Other

Equipment Description: SPENT FUEL PIT FLTR DEMIN LOOP INLT ISOL VALVE

Photos



1FC8794 7-18-12 075



1FC8794 7-18-12 076

Status: Y N U

Seismic Walkdown Checklist (SWC)

Equipment ID No.: 1FT-0121

Equipment Class: (18) Instruments on Racks

Equipment Description: CHARGING LINE D/P CELL FLOW XMITTR

Project: Braidwood 1 SWEL

Location (Bldg, Elev, Room/Area): Auxiliary, 364.00 ft, ALL

Manufacturer/Model:

Instructions for Completing Checklist

This checklist may be used to document the results of the Seismic Walkdown of an item of equipment on the SWEL. The space below each of the following questions may be used to record the results of judgments and findings. Additional space is provided at the end of this checklist for documenting other comments.

Anchorage

1. Is anchorage configuration verification required (i.e., is the item one of the 50% of SWEL items requiring such verification)? No

2. Is the anchorage free of bent, broken, missing or loose hardware? Not Applicable

3. Is the anchorage free of corrosion that is more than mild surface oxidation? Not Applicable

4. Is the anchorage free of visible cracks in the concrete near the anchors? Not Applicable

5. Is the anchorage configuration consistent with plant documentation? (Note: This question only applies if the item is one of the 50% for which an anchorage configuration verification is required.) Not Applicable

6. Based on the above anchorage evaluations, is the anchorage free of potentially adverse seismic conditions? Yes
Instrument supported on Panel 1PL97J which is well-supported and braced

Status: Y N U

Seismic Walkdown Checklist (SWC)

Equipment ID No.: 1FT-0121

Equipment Class: (18) Instruments on Racks

Equipment Description: CHARGING LINE D/P CELL FLOW XMITTR

Interaction Effects

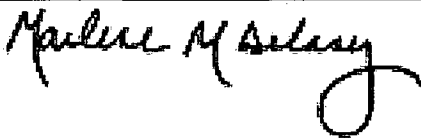
7. Are soft targets free from impact by nearby equipment or structures? Yes
8. Are overhead equipment, distribution systems, ceiling tiles and lighting, and masonry block walls not likely to collapse onto the equipment? Yes
Overhead components including fire protection piping are well-supported.
9. Do attached lines have adequate flexibility to avoid damage? Yes
10. Based on the above seismic interaction evaluations, is equipment free of potentially adverse seismic interaction effects? Yes

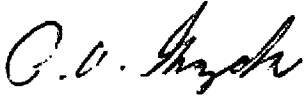
Other Adverse Conditions

11. Have you looked for and found no adverse seismic conditions that could adversely affect the safety functions of the equipment? Yes

Comments

Seismic walkdown performed week of 7/16/12 by M. Delaney & P. Gazda

Evaluated by:  Marlene Delaney Date: 10/1/2012

 Philip Gazda 10/1/2012

Status: Y N U

Seismic Walkdown Checklist (SWC)

Equipment ID No.: 1FT-0121

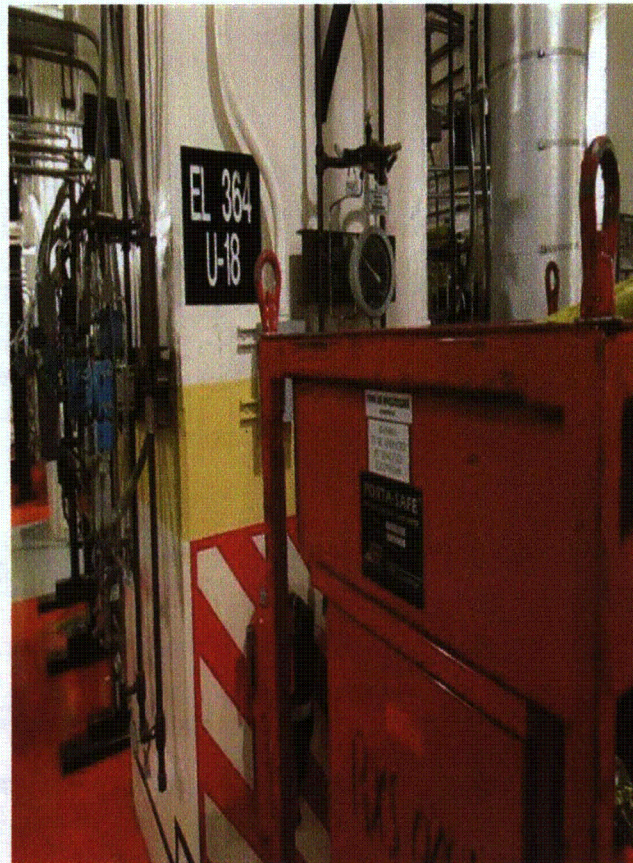
Equipment Class: (18) Instruments on Racks

Equipment Description: CHARGING LINE D/P CELL FLOW XMITTR

Photos



1FT-0121 (AWB - Housekeeping) 7-18-12 023



1FT-0121 (AWB - Housekeeping) 7-18-12 024

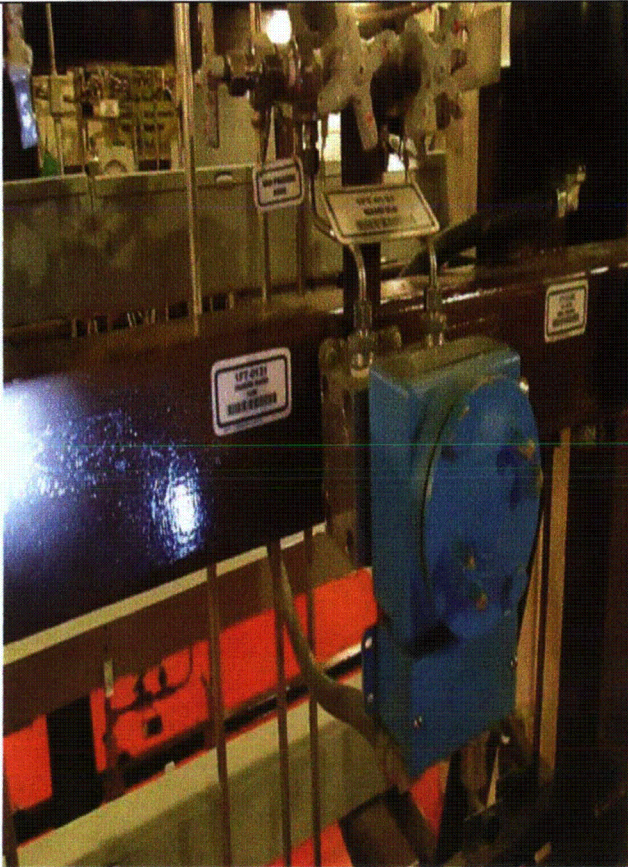
Status: Y N U

Seismic Walkdown Checklist (SWC)

Equipment ID No.: 1FT-0121

Equipment Class: (18) Instruments on Racks

Equipment Description: CHARGING LINE D/P CELL FLOW XMITTR



1FT-0121 7-18-12 022

Status: Y N U

Seismic Walkdown Checklist (SWC)

Equipment ID No.: 1FT-0132

Equipment Class: (18) Instruments on Racks

Equipment Description: LETDOWN FLOW D/P CELL

Project: Braidwood 1 SWEL

Location (Bldg, Elev, Room/Area): Auxiliary, 383.00 ft, ALL

Manufacturer/Model:

Instructions for Completing Checklist

This checklist may be used to document the results of the Seismic Walkdown of an item of equipment on the SWEL. The space below each of the following questions may be used to record the results of judgments and findings. Additional space is provided at the end of this checklist for documenting other comments.

Anchorage

1. Is anchorage configuration verification required (i.e., is the item one of the 50% of SWEL items requiring such verification)? No

2. Is the anchorage free of bent, broken, missing or loose hardware? Not Applicable

3. Is the anchorage free of corrosion that is more than mild surface oxidation? Not Applicable

4. Is the anchorage free of visible cracks in the concrete near the anchors? Not Applicable

5. Is the anchorage configuration consistent with plant documentation? (Note: This question only applies if the item is one of the 50% for which an anchorage configuration verification is required.) Not Applicable

6. Based on the above anchorage evaluations, is the anchorage free of potentially adverse seismic conditions? Yes

Status: Y N U

Seismic Walkdown Checklist (SWC)

Equipment ID No.: 1FT-0132

Equipment Class: (18) Instruments on Racks

Equipment Description: LETDOWN FLOW D/P CELL

Interaction Effects

7. Are soft targets free from impact by nearby equipment or structures? Yes
8. Are overhead equipment, distribution systems, ceiling tiles and lighting, and masonry block walls not likely to collapse onto the equipment? Yes
Seismic block walls
9. Do attached lines have adequate flexibility to avoid damage? Yes
10. Based on the above seismic interaction evaluations, is equipment free of potentially adverse seismic interaction effects? Yes

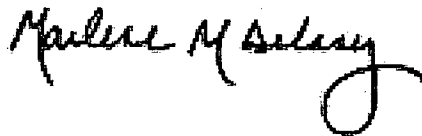
Other Adverse Conditions

11. Have you looked for and found no adverse seismic conditions that could adversely affect the safety functions of the equipment? Yes
minor discoloration and deterioration near equipment

Comments

Seismic walkdown performed week of 7/16/12 by M. Delaney & P. Gazda

Evaluated by:



Marlene Delaney

Date: 10/1/2012



Philip Gazda

10/1/2012

Status: Y N U

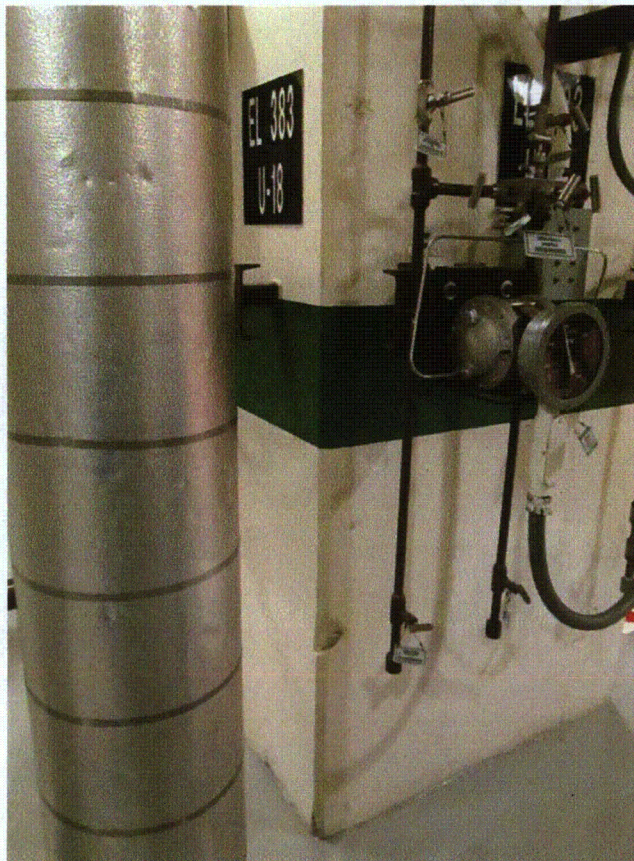
Seismic Walkdown Checklist (SWC)

Equipment ID No.: 1FT-0132

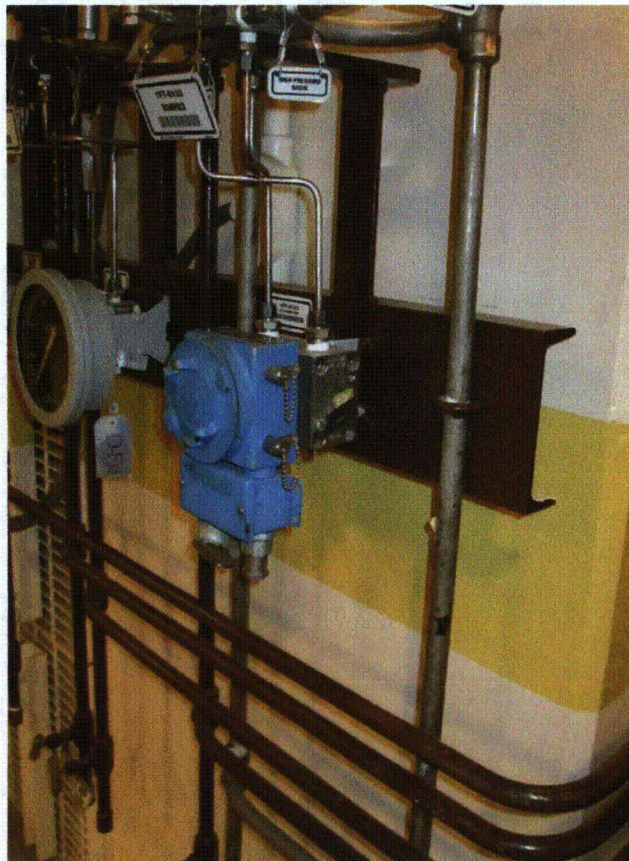
Equipment Class: (18) Instruments on Racks

Equipment Description: LETDOWN FLOW D/P CELL

Photos



1FTY-0132 (AWB concrete damage) 7-18-12 009



1FTY-0132 7-18-12 008

Status: Y N U

Seismic Walkdown Checklist (SWC)

Equipment ID No.: 1FT-AF014

Equipment Class: (18) Instruments on Racks

Equipment Description: AF TO SG 1B FLOW TRANSMITTER

Project: Braidwood 1 SWEL

Location (Bldg, Elev, Room/Area): Auxiliary, 364.00 ft, ALL

Manufacturer/Model:

Instructions for Completing Checklist

This checklist may be used to document the results of the Seismic Walkdown of an item of equipment on the SWEL. The space below each of the following questions may be used to record the results of judgments and findings. Additional space is provided at the end of this checklist for documenting other comments.

Anchorage

1. Is anchorage configuration verification required (i.e., is the item one of the 50% of SWEL items requiring such verification)? No

2. Is the anchorage free of bent, broken, missing or loose hardware? Not Applicable

3. Is the anchorage free of corrosion that is more than mild surface oxidation? Not Applicable

4. Is the anchorage free of visible cracks in the concrete near the anchors? Not Applicable

5. Is the anchorage configuration consistent with plant documentation? (Note: This question only applies if the item is one of the 50% for which an anchorage configuration verification is required.) Not Applicable

6. Based on the above anchorage evaluations, is the anchorage free of potentially adverse seismic conditions? Yes
Instrument is securely attached to Rack 1PL84JB which is well-anchored and braced

Status: Y N U

Seismic Walkdown Checklist (SWC)

Equipment ID No.: 1FT-AF014

Equipment Class: (18) Instruments on Racks

Equipment Description: AF TO SG 1B FLOW TRANSMITTER

Interaction Effects

7. Are soft targets free from impact by nearby equipment or structures? Yes
8. Are overhead equipment, distribution systems, ceiling tiles and lighting, and masonry block walls not likely to collapse onto the equipment? Yes
9. Do attached lines have adequate flexibility to avoid damage? Yes
10. Based on the above seismic interaction evaluations, is equipment free of potentially adverse seismic interaction effects? Yes

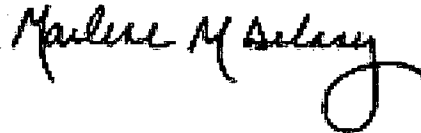
Other Adverse Conditions

11. Have you looked for and found no adverse seismic conditions that could adversely affect the safety functions of the equipment? Yes

Comments

Seismic walkdown performed week of 7/16/12 by M. Delaney & P. Gazda

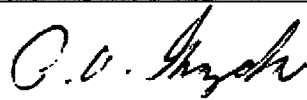
Evaluated by:



Marlene Delaney

Date: 10/1/2012

Evaluated by:



Philip Gazda

10/1/2012

Photos

None

Status: Y N U

Seismic Walkdown Checklist (SWC)

Equipment ID No.: 1HS-FC001

Equipment Class: (18) Instruments on Racks

Equipment Description: SPENT FUEL PIT PUMP

Project: Braidwood 1 SWEL

Location (Bldg, Elev, Room/Area): FH, 401.00 ft, ALL

Manufacturer/Model:

Instructions for Completing Checklist

This checklist may be used to document the results of the Seismic Walkdown of an item of equipment on the SWEL. The space below each of the following questions may be used to record the results of judgments and findings. Additional space is provided at the end of this checklist for documenting other comments.

Anchorage

1. Is anchorage configuration verification required (i.e., is the item one of the 50% of SWEL items requiring such verification)? No

2. Is the anchorage free of bent, broken, missing or loose hardware? Yes

3. Is the anchorage free of corrosion that is more than mild surface oxidation? Yes

4. Is the anchorage free of visible cracks in the concrete near the anchors? Yes

5. Is the anchorage configuration consistent with plant documentation? (Note: This question only applies if the item is one of the 50% for which an anchorage configuration verification is required.) Not Applicable

6. Based on the above anchorage evaluations, is the anchorage free of potentially adverse seismic conditions? Yes
Anchored to seismic block wall.

Status: Y N U

Seismic Walkdown Checklist (SWC)

Equipment ID No.: 1HS-FC001

Equipment Class: (18) Instruments on Racks

Equipment Description: SPENT FUEL PIT PUMP

Interaction Effects

7. Are soft targets free from impact by nearby equipment or structures? Yes
8. Are overhead equipment, distribution systems, ceiling tiles and lighting, and masonry block walls not likely to collapse onto the equipment? Yes
9. Do attached lines have adequate flexibility to avoid damage? Yes
10. Based on the above seismic interaction evaluations, is equipment free of potentially adverse seismic interaction effects? Yes

Other Adverse Conditions

11. Have you looked for and found no adverse seismic conditions that could adversely affect the safety functions of the equipment? Yes

Comments

Seismic walkdown performed week of 7/16/12 by M. Delaney & P. Gazda

Evaluated by: Marlene M Delaney Marlene Delaney Date: 10/1/2012

P. P. Gazda Philip Gazda 10/1/2012

Status: Y N U

Seismic Walkdown Checklist (SWC)

Equipment ID No.: 1HS-FC001

Equipment Class: (18) Instruments on Racks

Equipment Description: SPENT FUEL PIT PUMP

Photos



1HS-FC001 7-18-12 058

Status: Y N U

Seismic Walkdown Checklist (SWC)

Equipment ID No.: 1IP02E

Equipment Class: (4) Transformers

Equipment Description: INSTRUMENT BUS 112 TRANSFORMER - DIV. 12

Project: Braidwood 1 SWEL

Location (Bldg, Elev, Room/Area): Auxiliary, 451.00 ft, ALL

Manufacturer/Model:

Instructions for Completing Checklist

This checklist may be used to document the results of the Seismic Walkdown of an item of equipment on the SWEL. The space below each of the following questions may be used to record the results of judgments and findings. Additional space is provided at the end of this checklist for documenting other comments.

Anchorage

1. Is anchorage configuration verification required (i.e., is the item one of the 50% of SWEL items requiring such verification)? Yes

2. Is the anchorage free of bent, broken, missing or loose hardware? Yes

3. Is the anchorage free of corrosion that is more than mild surface oxidation? Yes

4. Is the anchorage free of visible cracks in the concrete near the anchors? Yes

5. Is the anchorage configuration consistent with plant documentation? (Note: This question only applies if the item is one of the 50% for which an anchorage configuration verification is required.) Yes
Drawing 20E-0-3391K Revision AF

6. Based on the above anchorage evaluations, is the anchorage free of potentially adverse seismic conditions? Yes

Status: Y N U

Seismic Walkdown Checklist (SWC)

Equipment ID No.: 1IP02E

Equipment Class: (4) Transformers

Equipment Description: INSTRUMENT BUS 112 TRANSFORMER - DIV. 12

Interaction Effects

7. Are soft targets free from impact by nearby equipment or structures? Yes
8. Are overhead equipment, distribution systems, ceiling tiles and lighting, and masonry block walls not likely to collapse onto the equipment? Yes
Seismic block walls
9. Do attached lines have adequate flexibility to avoid damage? Yes
10. Based on the above seismic interaction evaluations, is equipment free of potentially adverse seismic interaction effects? Yes

Other Adverse Conditions

11. Have you looked for and found no adverse seismic conditions that could adversely affect the safety functions of the equipment? Yes

Comments

Seismic walkdown performed week of 7/16/12 by M. Delaney & P. Gazda

Evaluated by: Marlene M. Delaney Marlene Delaney Date: 10/1/2012

Evaluated by: P. V. Gazda Philip Gazda 10/1/2012

Status: Y N U

Seismic Walkdown Checklist (SWC)

Equipment ID No.: 1IP02E

Equipment Class: (4) Transformers

Equipment Description: INSTRUMENT BUS 112 TRANSFORMER - DIV. 12

Photos



1IP02E 7-16-12 057



1IP02E 7-16-12 058

Status: Y N U

Seismic Walkdown Checklist (SWC)

Equipment ID No.: 11P02J

Equipment Class: (14) Distribution Panels

Equipment Description: 120 VAC INSTRUMENT BUS DISTRIBUTION PANEL 112 - DIV. 12

Project: Braidwood 1 SWEL

Location (Bldg, Elev, Room/Area): Auxiliary, 451.00 ft, ALL

Manufacturer/Model:

Instructions for Completing Checklist

This checklist may be used to document the results of the Seismic Walkdown of an item of equipment on the SWEL. The space below each of the following questions may be used to record the results of judgments and findings. Additional space is provided at the end of this checklist for documenting other comments.

Anchorage

1. Is anchorage configuration verification required (i.e., is the item one of the 50% of SWEL items requiring such verification)? Yes

2. Is the anchorage free of bent, broken, missing or loose hardware? Yes

3. Is the anchorage free of corrosion that is more than mild surface oxidation? Yes

4. Is the anchorage free of visible cracks in the concrete near the anchors? Yes
Attached to safety related block wall.

5. Is the anchorage configuration consistent with plant documentation? (Note: This question only applies if the item is one of the 50% for which an anchorage configuration verification is required.) Yes
Drawing 20E-0-3391F Revision AN Detail 123

6. Based on the above anchorage evaluations, is the anchorage free of potentially adverse seismic conditions? Yes

Status: Y N U

Seismic Walkdown Checklist (SWC)

Equipment ID No.: 1IP02J

Equipment Class: (14) Distribution Panels

Equipment Description: 120 VAC INSTRUMENT BUS DISTRIBUTION PANEL 112 - DIV. 12

Interaction Effects

7. Are soft targets free from impact by nearby equipment or structures? Yes
8. Are overhead equipment, distribution systems, ceiling tiles and lighting, and masonry block walls not likely to collapse onto the equipment? Yes
Seismic block walls
9. Do attached lines have adequate flexibility to avoid damage? Yes
10. Based on the above seismic interaction evaluations, is equipment free of potentially adverse seismic interaction effects? Yes

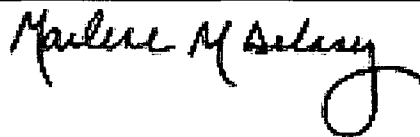
Other Adverse Conditions

11. Have you looked for and found no adverse seismic conditions that could adversely affect the safety functions of the equipment? Yes

Comments

Seismic walkdown performed week of 7/16/12 by M. Delaney & P. Gazda

Evaluated by:



Marlene Delaney

Date: 10/1/2012



Philip Gazda

10/1/2012

Status: Y N U

Seismic Walkdown Checklist (SWC)

Equipment ID No.: 1IP02J

Equipment Class: (14) Distribution Panels

Equipment Description: 120 VAC INSTRUMENT BUS DISTRIBUTION PANEL 112 - DIV. 12

Photos

None.

Status: Y N U

Seismic Walkdown Checklist (SWC)

Equipment ID No.: 1IP06E

Equipment Class: (16) Battery Chargers and Inverters

Equipment Description: INSTRUMENT BUS 112 INVERTER - DIV. 12

Project: Braidwood 1 SWEL

Location (Bldg, Elev, Room/Area): Auxiliary, 451.00 ft, ALL

Manufacturer/Model:

Instructions for Completing Checklist

This checklist may be used to document the results of the Seismic Walkdown of an item of equipment on the SWEL. The space below each of the following questions may be used to record the results of judgments and findings. Additional space is provided at the end of this checklist for documenting other comments.

Anchorage

1. Is anchorage configuration verification required (i.e., is the item one of the 50% of SWEL items requiring such verification)? Yes

2. Is the anchorage free of bent, broken, missing or loose hardware? Yes

3. Is the anchorage free of corrosion that is more than mild surface oxidation? Yes

4. Is the anchorage free of visible cracks in the concrete near the anchors? Yes

5. Is the anchorage configuration consistent with plant documentation? (Note: This question only applies if the item is one of the 50% for which an anchorage configuration verification is required.)
Drawing 20E-0-3391BK Revision D Detail 19271 Yes

6. Based on the above anchorage evaluations, is the anchorage free of potentially adverse seismic conditions? Yes

Status: Y N U

Seismic Walkdown Checklist (SWC)

Equipment ID No.: 1IP06E

Equipment Class: (16) Battery Chargers and Inverters

Equipment Description: INSTRUMENT BUS 112 INVERTER - DIV. 12

Interaction Effects

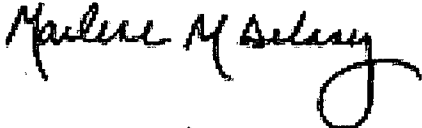
7. Are soft targets free from impact by nearby equipment or structures? Yes
8. Are overhead equipment, distribution systems, ceiling tiles and lighting, and masonry block walls not likely to collapse onto the equipment? Yes
Seismic block walls
9. Do attached lines have adequate flexibility to avoid damage? Yes
10. Based on the above seismic interaction evaluations, is equipment free of potentially adverse seismic interaction effects? Yes


Other Adverse Conditions

11. Have you looked for and found no adverse seismic conditions that could adversely affect the safety functions of the equipment? Yes

Comments

Seismic walkdown performed week of 7/16/12 by M. Delaney & P. Gazda

Evaluated by:  Marlene Delaney Date: 10/1/2012

 Philip Gazda 10/1/2012

Status: Y N U

Seismic Walkdown Checklist (SWC)

Equipment ID No.: 11P06E

Equipment Class: (16) Battery Chargers and Inverters

Equipment Description: INSTRUMENT BUS 112 INVERTER - DIV. 12

Photos



11P06E 7-16-12 053



11P06E 7-16-12 054

Status: Y N U

Seismic Walkdown Checklist (SWC)

Equipment ID No.: 1IP08E

Equipment Class: (16) Battery Chargers and Inverters

Equipment Description: INSTRUMENT BUS 114 INVERTER - DIV. 12

Project: Braidwood 1 SWEL

Location (Bldg, Elev, Room/Area): Auxiliary, 451.00 ft, ALL

Manufacturer/Model:

Instructions for Completing Checklist

This checklist may be used to document the results of the Seismic Walkdown of an item of equipment on the SWEL. The space below each of the following questions may be used to record the results of judgments and findings. Additional space is provided at the end of this checklist for documenting other comments.

Anchorage

1. Is anchorage configuration verification required (i.e., is the item one of the 50% of SWEL items requiring such verification)? Yes

2. Is the anchorage free of bent, broken, missing or loose hardware? Yes

3. Is the anchorage free of corrosion that is more than mild surface oxidation? Yes

4. Is the anchorage free of visible cracks in the concrete near the anchors? Yes

5. Is the anchorage configuration consistent with plant documentation? (Note: This question only applies if the item is one of the 50% for which an anchorage configuration verification is required.) Yes
Drawing 20E-0-3391BK Revision D Detail 19271

6. Based on the above anchorage evaluations, is the anchorage free of potentially adverse seismic conditions? Yes

Status: Y N U

Seismic Walkdown Checklist (SWC)

Equipment ID No.: 1IP08E

Equipment Class: (16) Battery Chargers and Inverters

Equipment Description: INSTRUMENT BUS 114 INVERTER - DIV. 12

Interaction Effects

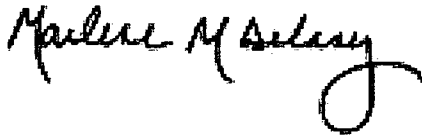
7. Are soft targets free from impact by nearby equipment or structures? Yes
8. Are overhead equipment, distribution systems, ceiling tiles and lighting, and masonry block walls not likely to collapse onto the equipment? Yes
Seismic block walls
9. Do attached lines have adequate flexibility to avoid damage? Yes
10. Based on the above seismic interaction evaluations, is equipment free of potentially adverse seismic interaction effects? Yes

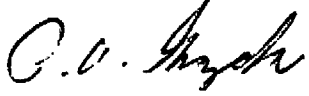
Other Adverse Conditions

11. Have you looked for and found no adverse seismic conditions that could adversely affect the safety functions of the equipment? Yes

Comments

Seismic walkdown performed week of 7/16/12 by M. Delaney & P. Gazda

Evaluated by:  Marlene Delaney Date: 10/1/2012

 Philip Gazda 10/1/2012

Status: Y N U

Seismic Walkdown Checklist (SWC)

Equipment ID No.: 1IP08E

Equipment Class: (16) Battery Chargers and Inverters

Equipment Description: INSTRUMENT BUS 114 INVERTER - DIV. 12

Photos



1IP08E 7-16-12 055



1IP08E 7-16-12 056

Status: Y N U

Seismic Walkdown Checklist (SWC)

Equipment ID No.: 1LT-0932

Equipment Class: (18) Instruments on Racks

Equipment Description: REF WTR STG TK LVL D/P XMTR

Project: Braidwood 1 SWEL

Location (Bldg, Elev, Room/Area): Auxiliary, 379.00 ft, ALL

Manufacturer/Model:

Instructions for Completing Checklist

This checklist may be used to document the results of the Seismic Walkdown of an item of equipment on the SWEL. The space below each of the following questions may be used to record the results of judgments and findings. Additional space is provided at the end of this checklist for documenting other comments.

Anchorage

1. Is anchorage configuration verification required (i.e., is the item one of the 50% of SWEL items requiring such verification)? No

2. Is the anchorage free of bent, broken, missing or loose hardware? Not Applicable

3. Is the anchorage free of corrosion that is more than mild surface oxidation? Not Applicable

4. Is the anchorage free of visible cracks in the concrete near the anchors? Not Applicable

5. Is the anchorage configuration consistent with plant documentation? (Note: This question only applies if the item is one of the 50% for which an anchorage configuration verification is required.) Not Applicable

6. Based on the above anchorage evaluations, is the anchorage free of potentially adverse seismic conditions? Yes

Status: Y N U

Seismic Walkdown Checklist (SWC)

Equipment ID No.: 1LT-0932

Equipment Class: (18) Instruments on Racks

Equipment Description: REF WTR STG TK LVL D/P XMTR

Interaction Effects

7. Are soft targets free from impact by nearby equipment or structures? Yes
8. Are overhead equipment, distribution systems, ceiling tiles and lighting, and masonry block walls not likely to collapse onto the equipment? Yes
9. Do attached lines have adequate flexibility to avoid damage? Yes
10. Based on the above seismic interaction evaluations, is equipment free of potentially adverse seismic interaction effects? Yes

Other Adverse Conditions

11. Have you looked for and found no adverse seismic conditions that could adversely affect the safety functions of the equipment? Yes
See AWC 39 for discussion on water leak in tunnel

Comments

Seismic walkdown performed week of 7/16/12 by M. Delaney & P. Gazda

Evaluated by: Marlene M Delaney Marlene Delaney Date: 10/1/2012

P. V. Gazda Philip Gazda 10/1/2012

Status: Y N U

Seismic Walkdown Checklist (SWC)

Equipment ID No.: 1LT-0932

Equipment Class: (18) Instruments on Racks

Equipment Description: REF WTR STG TK LVL D/P XMTTR

Photos



1LT-0932 (AWB - water leak from hatch) 7-19-12 017



1LT-0932 7-19-12 015

Status: Y N U

Seismic Walkdown Checklist (SWC)

Equipment ID No.: 1LT-0932

Equipment Class: (18) Instruments on Racks

Equipment Description: REF WTR STG TK LVL D/P XMTR



1LT-0932 7-19-12 016

Status: Y N U

Seismic Walkdown Checklist (SWC)

Equipment ID No.: 1MS001A

Equipment Class: (7) Fluid-Operated Valves

Equipment Description: MS ISOL VLV LOOP 1A ASMBLY; 30-1/4"

Project: Braidwood 1 SWEL

Location (Bldg, Elev, Room/Area): Auxiliary, 377.00 ft, ALL

Manufacturer/Model:

Instructions for Completing Checklist

This checklist may be used to document the results of the Seismic Walkdown of an item of equipment on the SWEL. The space below each of the following questions may be used to record the results of judgments and findings. Additional space is provided at the end of this checklist for documenting other comments.

Anchorage

1. Is anchorage configuration verification required (i.e., is the item one of the 50% of SWEL items requiring such verification)? No

2. Is the anchorage free of bent, broken, missing or loose hardware? Not Applicable

3. Is the anchorage free of corrosion that is more than mild surface oxidation? Not Applicable

4. Is the anchorage free of visible cracks in the concrete near the anchors? Not Applicable

5. Is the anchorage configuration consistent with plant documentation? (Note: This question only applies if the item is one of the 50% for which an anchorage configuration verification is required.) Not Applicable

6. Based on the above anchorage evaluations, is the anchorage free of potentially adverse seismic conditions? Yes

Status: Y N U

Seismic Walkdown Checklist (SWC)

Equipment ID No.: 1MS001A

Equipment Class: (7) Fluid-Operated Valves

Equipment Description: MS ISOL VLV LOOP 1A ASMBLY; 30-1/4"

Interaction Effects

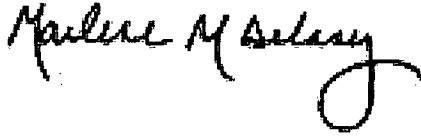
7. Are soft targets free from impact by nearby equipment or structures? Yes
8. Are overhead equipment, distribution systems, ceiling tiles and lighting, and masonry block walls not likely to collapse onto the equipment? Yes
9. Do attached lines have adequate flexibility to avoid damage? Yes
10. Based on the above seismic interaction evaluations, is equipment free of potentially adverse seismic interaction effects? Yes

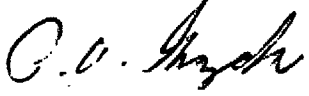
Other Adverse Conditions

11. Have you looked for and found no adverse seismic conditions that could adversely affect the safety functions of the equipment? Yes
Valve is robust.

Comments

Seismic walkdown performed week of 7/16/12 by M. Delaney & P. Gazda

Evaluated by:  Marlene Delaney Date: 10/1/2012

 Philip Gazda 10/1/2012

Status: Y N U

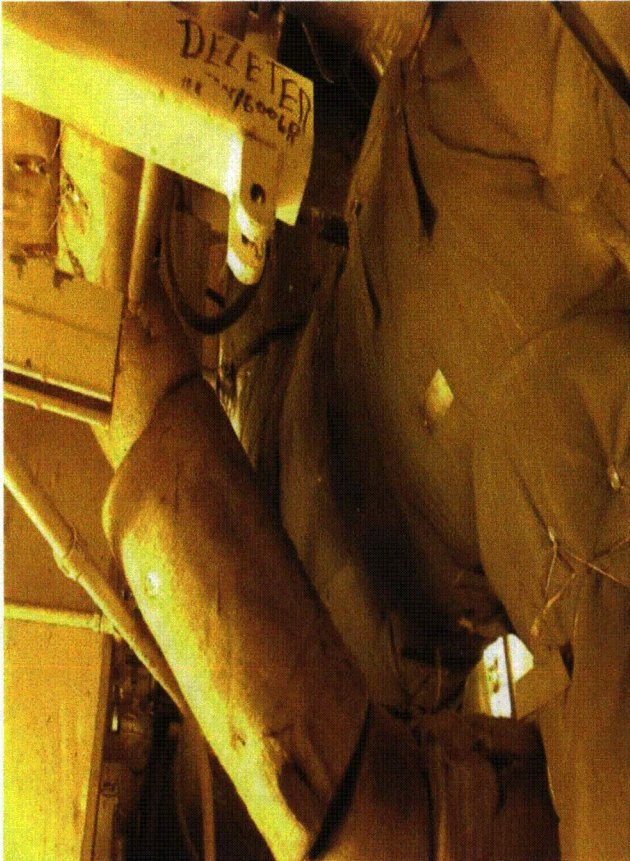
Seismic Walkdown Checklist (SWC)

Equipment ID No.: 1MS001A

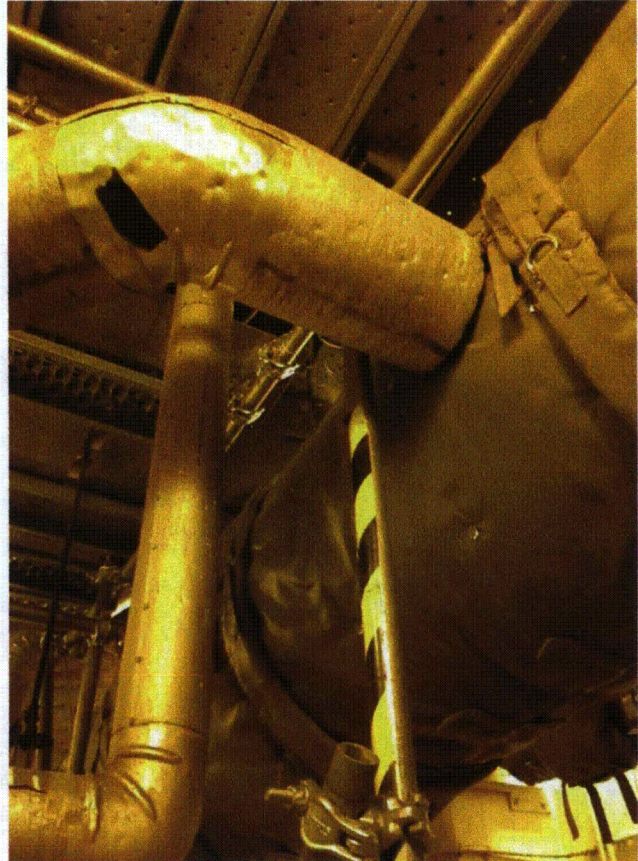
Equipment Class: (7) Fluid-Operated Valves

Equipment Description: MS ISOL VLV LOOP 1A ASMBLY; 30-1/4"

Photos



1MS001A 7-17-12 011



1MS001A 7-17-12 012

Status: Y N U

Seismic Walkdown Checklist (SWC)

Equipment ID No.: 1MS018A

Equipment Class: (8) Motor-Operated and Solenoid-Operated Valves

Equipment Description: S/G 1A PORV ASMBLY; 8"

Project: Braidwood 1 SWEL

Location (Bldg, Elev, Room/Area): Auxiliary, 401.00 ft, ALL

Manufacturer/Model:

Instructions for Completing Checklist

This checklist may be used to document the results of the Seismic Walkdown of an item of equipment on the SWEL. The space below each of the following questions may be used to record the results of judgments and findings. Additional space is provided at the end of this checklist for documenting other comments.

Anchorage

1. Is anchorage configuration verification required (i.e., is the item one of the 50% of SWEL items requiring such verification)? No

2. Is the anchorage free of bent, broken, missing or loose hardware? Not Applicable

3. Is the anchorage free of corrosion that is more than mild surface oxidation? Not Applicable

4. Is the anchorage free of visible cracks in the concrete near the anchors? Not Applicable

5. Is the anchorage configuration consistent with plant documentation? (Note: This question only applies if the item is one of the 50% for which an anchorage configuration verification is required.) Not Applicable

6. Based on the above anchorage evaluations, is the anchorage free of potentially adverse seismic conditions? Yes

Status: Y N U

Seismic Walkdown Checklist (SWC)

Equipment ID No.: 1MS018A

Equipment Class: (8) Motor-Operated and Solenoid-Operated Valves

Equipment Description: S/G 1A PORV ASMBLY; 8"

Interaction Effects

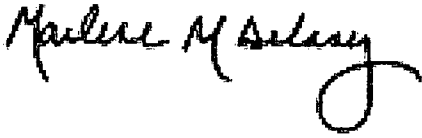
7. Are soft targets free from impact by nearby equipment or structures? Yes
8. Are overhead equipment, distribution systems, ceiling tiles and lighting, and masonry block walls not likely to collapse onto the equipment? Yes
9. Do attached lines have adequate flexibility to avoid damage? Yes
10. Based on the above seismic interaction evaluations, is equipment free of potentially adverse seismic interaction effects? Yes

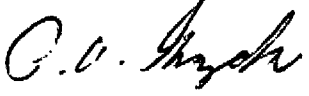
Other Adverse Conditions

11. Have you looked for and found no adverse seismic conditions that could adversely affect the safety functions of the equipment? Yes
Valve is robust.

Comments

Seismic walkdown performed week of 7/16/12 by M. Delaney & P. Gazda

Evaluated by:  Marlene Delaney Date: 10/1/2012

 Philip Gazda 10/1/2012

Status: Y N U

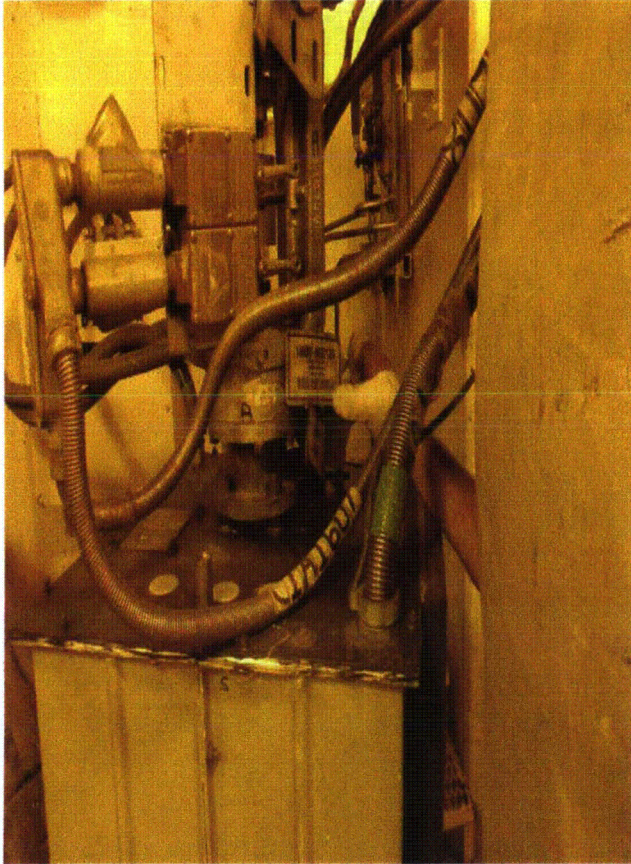
Seismic Walkdown Checklist (SWC)

Equipment ID No.: 1MS018A

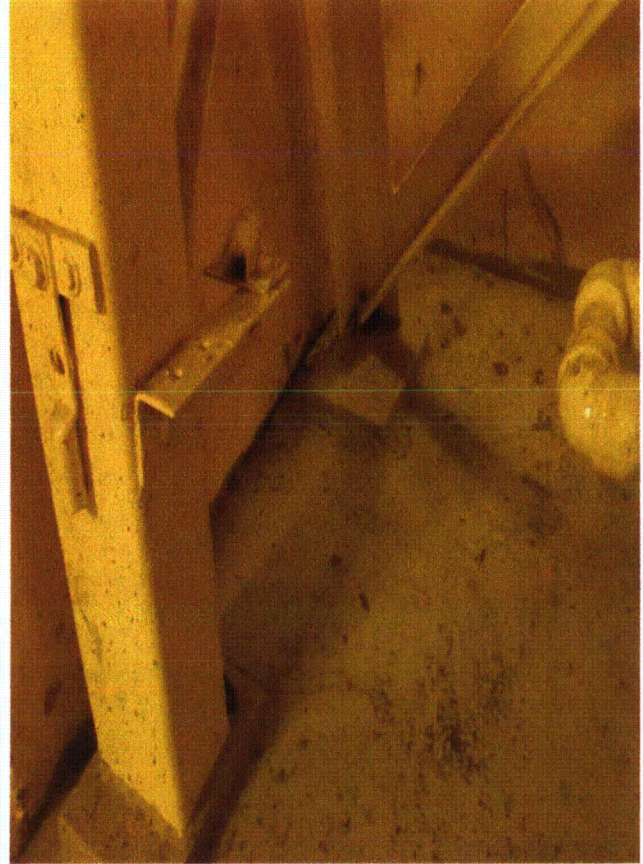
Equipment Class: (8) Motor-Operated and Solenoid-Operated Valves

Equipment Description: S/G 1A PORV ASMBLY; 8"

Photos



1MS018A 7-17-12 008



1MS018A 7-17-12 009

Status: Y N U

Seismic Walkdown Checklist (SWC)

Equipment ID No.: 1MS018A

Equipment Class: (8) Motor-Operated and Solenoid-Operated Valves

Equipment Description: S/G 1A PORV ASMBLY; 8"



1MS018A 7-17-12 010

Status: Y N U

Seismic Walkdown Checklist (SWC)

Equipment ID No.: 1MS018B

Equipment Class: (8) Motor-Operated and Solenoid-Operated Valves

Equipment Description: S/G 1B PORV ASMBLY; 8"

Project: Braidwood 1 SWEL

Location (Bldg, Elev, Room/Area): Auxiliary, 401.00 ft, ALL

Manufacturer/Model:

Instructions for Completing Checklist

This checklist may be used to document the results of the Seismic Walkdown of an item of equipment on the SWEL. The space below each of the following questions may be used to record the results of judgments and findings. Additional space is provided at the end of this checklist for documenting other comments.

Anchorage

1. Is anchorage configuration verification required (i.e., is the item one of the 50% of SWEL items requiring such verification)? No

2. Is the anchorage free of bent, broken, missing or loose hardware? Not Applicable

3. Is the anchorage free of corrosion that is more than mild surface oxidation? Not Applicable

4. Is the anchorage free of visible cracks in the concrete near the anchors? Not Applicable

5. Is the anchorage configuration consistent with plant documentation? (Note: This question only applies if the item is one of the 50% for which an anchorage configuration verification is required.) Not Applicable

6. Based on the above anchorage evaluations, is the anchorage free of potentially adverse seismic conditions? Yes

Status: Y N U

Seismic Walkdown Checklist (SWC)

Equipment ID No.: 1MS018B

Equipment Class: (8) Motor-Operated and Solenoid-Operated Valves

Equipment Description: S/G 1B PORV ASMBLY; 8"

Interaction Effects

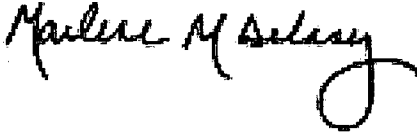
7. Are soft targets free from impact by nearby equipment or structures? Yes
8. Are overhead equipment, distribution systems, ceiling tiles and lighting, and masonry block walls not likely to collapse onto the equipment? Yes
Scaffolding near equipment is well-supported.
All overhead components are well-supported.
9. Do attached lines have adequate flexibility to avoid damage? Yes
10. Based on the above seismic interaction evaluations, is equipment free of potentially adverse seismic interaction effects? Yes

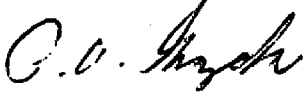
Other Adverse Conditions

11. Have you looked for and found no adverse seismic conditions that could adversely affect the safety functions of the equipment? Yes
Rugged valve

Comments

Seismic walkdown performed week of 7/16/12 by M. Delaney & P. Gazda

Evaluated by:  Marlene Delaney Date: 10/1/2012

 Philip Gazda 10/1/2012

Status: Y N U

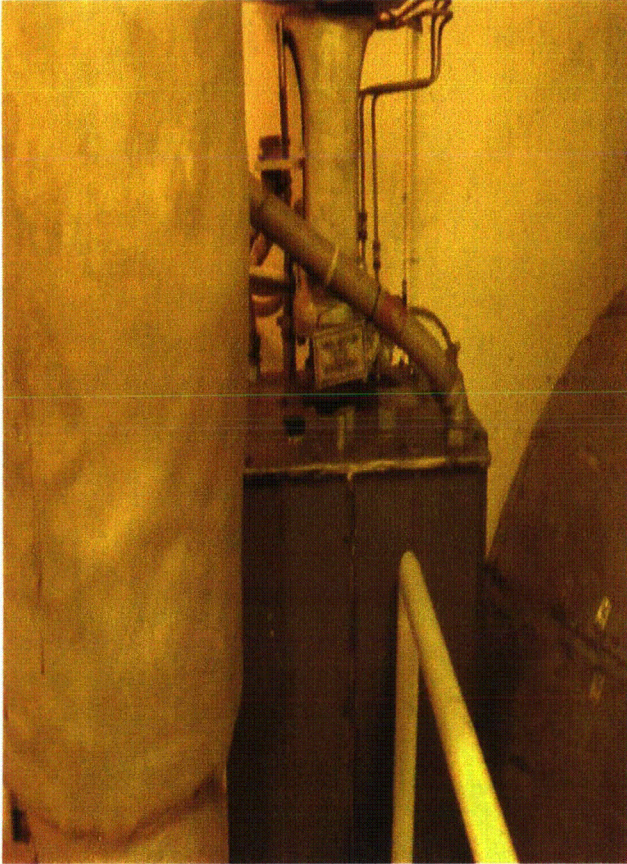
Seismic Walkdown Checklist (SWC)

Equipment ID No.: 1MS018B

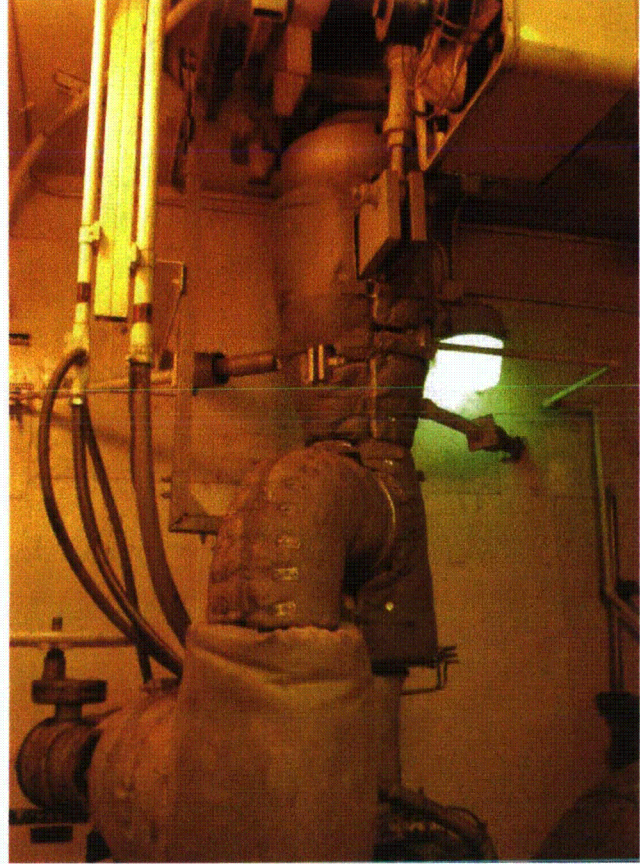
Equipment Class: (8) Motor-Operated and Solenoid-Operated Valves

Equipment Description: S/G 1B PORV ASMBLY; 8"

Photos



1MS018B 7-17-12 004



1MS018B 7-17-12 005

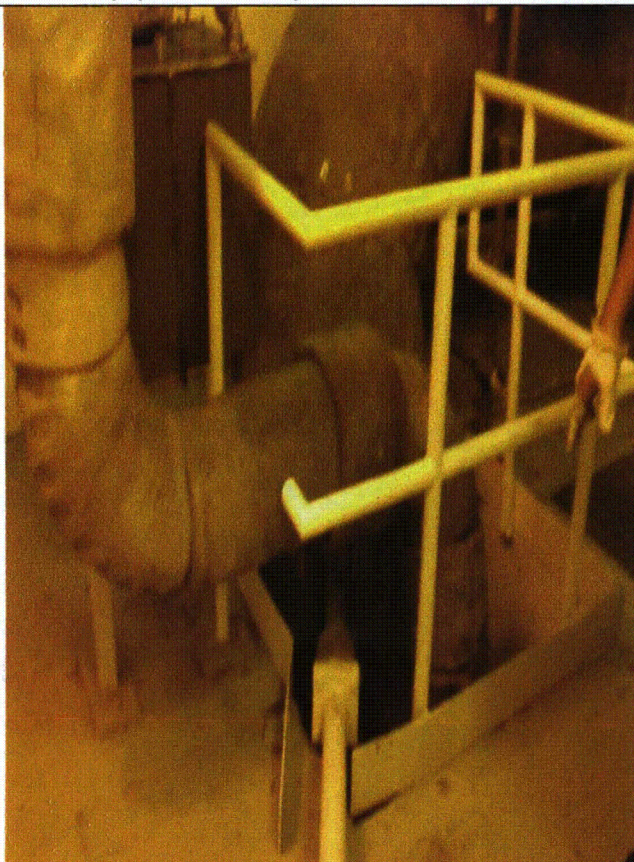
Status: Y N U

Seismic Walkdown Checklist (SWC)

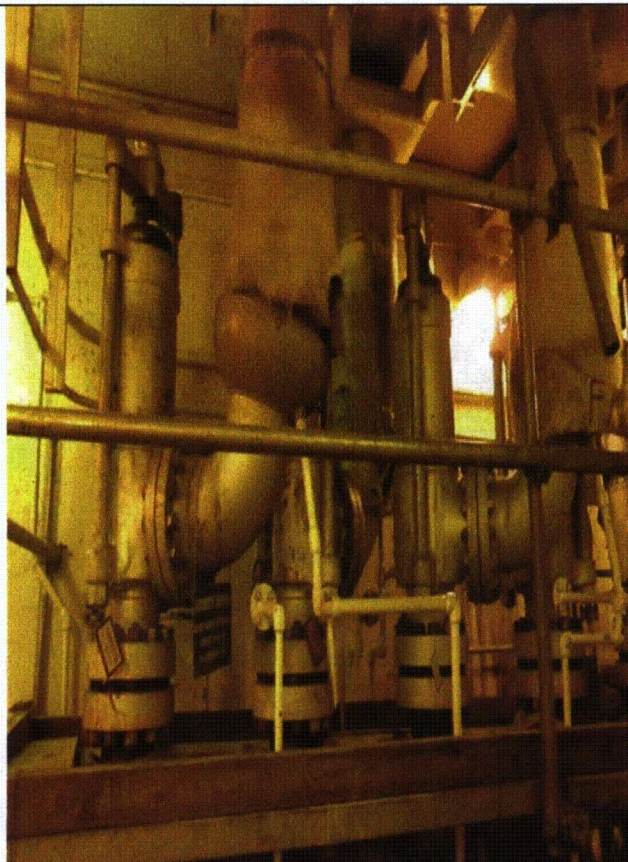
Equipment ID No.: 1MS018B

Equipment Class: (8) Motor-Operated and Solenoid-Operated Valves

Equipment Description: S/G 1B PORV ASMBLY; 8"



1MS018B 7-17-12 006



1MS018B 7-17-12 007

Status: Y N U

Seismic Walkdown Checklist (SWC)

Equipment ID No.: 1PA01J

Equipment Class: (20) Instrumentation and Control Panels and Cabinets

Equipment Description: PROTECTION SYSTEM CABINET (I&E Prot. Cab. CH 1)

Project: Braidwood 1 SWEL

Location (Bldg, Elev, Room/Area): Auxiliary, 451.00 ft, ALL

Manufacturer/Model:

Instructions for Completing Checklist

This checklist may be used to document the results of the Seismic Walkdown of an item of equipment on the SWEL. The space below each of the following questions may be used to record the results of judgments and findings. Additional space is provided at the end of this checklist for documenting other comments.

Anchorage

1. Is anchorage configuration verification required (i.e., is the item one of the 50% of SWEL items requiring such verification)? Yes

2. Is the anchorage free of bent, broken, missing or loose hardware? Yes
Welded detail

3. Is the anchorage free of corrosion that is more than mild surface oxidation? Yes

4. Is the anchorage free of visible cracks in the concrete near the anchors? Yes
Floor is tile so cracks can't be seen exterior to cabinet. Details are welded.

5. Is the anchorage configuration consistent with plant documentation? (Note: This question only applies if the item is one of the 50% for which an anchorage configuration verification is required.) Yes
Drawing 20E-0-3391C Revision BM Detail for miscellaneous racks

6. Based on the above anchorage evaluations, is the anchorage free of potentially adverse seismic conditions? Yes

Status: Y N U

Seismic Walkdown Checklist (SWC)

Equipment ID No.: 1PA01J

Equipment Class: (20) Instrumentation and Control Panels and Cabinets

Equipment Description: PROTECTION SYSTEM CABINET (I&E Prot. Cab. CH 1)

Interaction Effects

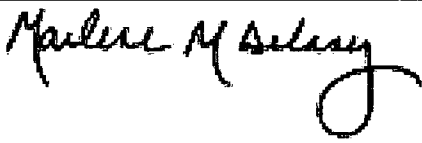
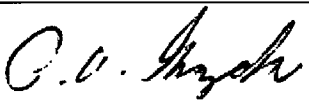
- | | |
|---|-----|
| 7. Are soft targets free from impact by nearby equipment or structures? | Yes |
| 8. Are overhead equipment, distribution systems, ceiling tiles and lighting, and masonry block walls not likely to collapse onto the equipment? | Yes |
| 9. Do attached lines have adequate flexibility to avoid damage? | Yes |
| 10. Based on the above seismic interaction evaluations, is equipment free of potentially adverse seismic interaction effects? | Yes |

Other Adverse Conditions

- | | |
|--|-----|
| 11. Have you looked for and found no adverse seismic conditions that could adversely affect the safety functions of the equipment? | Yes |
|--|-----|

Comments

Seismic walkdown performed week of 7/16/12 by M. Delaney & P. Gazda

Evaluated by:		Marlene Delaney	Date:	<u>10/1/2012</u>
		Philip Gazda		<u>10/1/2012</u>

Status: Y N U

Seismic Walkdown Checklist (SWC)

Equipment ID No.: 1PA01J

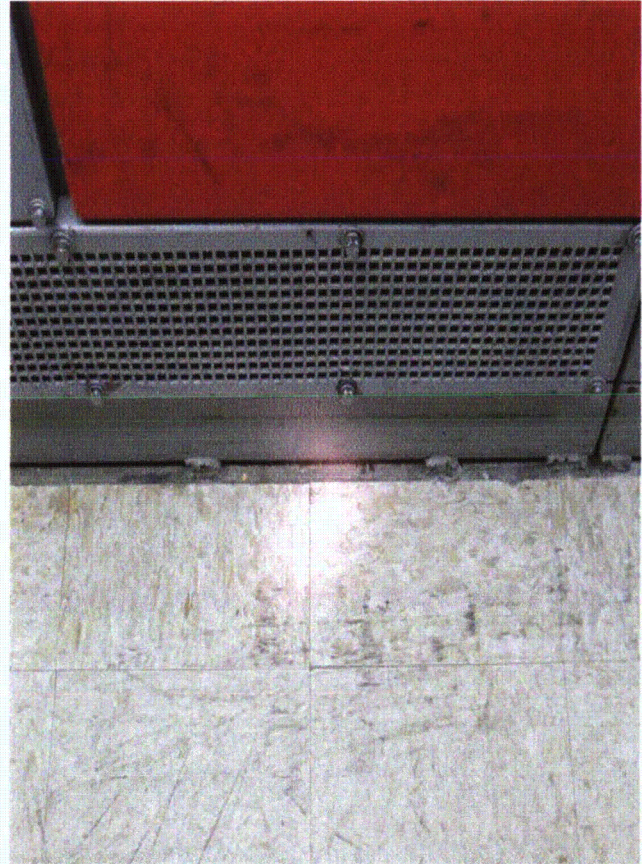
Equipment Class: (20) Instrumentation and Control Panels and Cabinets

Equipment Description: PROTECTION SYSTEM CABINET (I&E Prot. Cab. CH 1)

Photos



1PA01J 7-16-12 008



1PA01J 7-16-12 009

Status: Y N U

Seismic Walkdown Checklist (SWC)

Equipment ID No.: 1PA01J

Equipment Class: (20) Instrumentation and Control Panels and Cabinets

Equipment Description: PROTECTION SYSTEM CABINET (I&E Prot. Cab. CH 1)



1PA01J 7-16-12 010

Status: Y N U

Seismic Walkdown Checklist (SWC)

Equipment ID No.: 1PA03J

Equipment Class: (20) Instrumentation and Control Panels and Cabinets

Equipment Description: PROTECTION SYSTEM CABINET (I&E Prot. Cab. CH 3)

Project: Braidwood 1 SWEL

Location (Bldg, Elev, Room/Area): Auxiliary, 451.00 ft, ALL

Manufacturer/Model:

Instructions for Completing Checklist

This checklist may be used to document the results of the Seismic Walkdown of an item of equipment on the SWEL. The space below each of the following questions may be used to record the results of judgments and findings. Additional space is provided at the end of this checklist for documenting other comments.

Anchorage

1. Is anchorage configuration verification required (i.e., is the item one of the 50% of SWEL items requiring such verification)? Yes

2. Is the anchorage free of bent, broken, missing or loose hardware? Yes
Welded detail

3. Is the anchorage free of corrosion that is more than mild surface oxidation? Yes

4. Is the anchorage free of visible cracks in the concrete near the anchors? Yes
Tile floor

5. Is the anchorage configuration consistent with plant documentation? (Note: This question only applies if the item is one of the 50% for which an anchorage configuration verification is required.) Yes
Drawing 20E-0-3391C Revision BM Detail for miscellaneous racks

6. Based on the above anchorage evaluations, is the anchorage free of potentially adverse seismic conditions? Yes

Status: Y N U

Seismic Walkdown Checklist (SWC)

Equipment ID No.: 1PA03J

Equipment Class: (20) Instrumentation and Control Panels and Cabinets

Equipment Description: PROTECTION SYSTEM CABINET (I&E Prot. Cab. CH 3)

Interaction Effects

7. Are soft targets free from impact by nearby equipment or structures? Yes
8. Are overhead equipment, distribution systems, ceiling tiles and lighting, and masonry block walls not likely to collapse onto the equipment? Yes
9. Do attached lines have adequate flexibility to avoid damage? Yes
10. Based on the above seismic interaction evaluations, is equipment free of potentially adverse seismic interaction effects? Yes

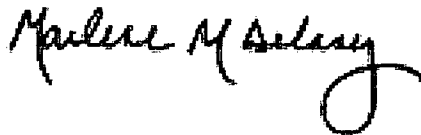
Other Adverse Conditions

11. Have you looked for and found no adverse seismic conditions that could adversely affect the safety functions of the equipment? Yes

Comments

Seismic walkdown performed week of 7/16/12 by M. Delaney & P. Gazda

Evaluated by:



Marlene Delaney

Date: 10/1/2012



Philip Gazda

10/1/2012

Status: Y N U

Seismic Walkdown Checklist (SWC)

Equipment ID No.: 1PA03J

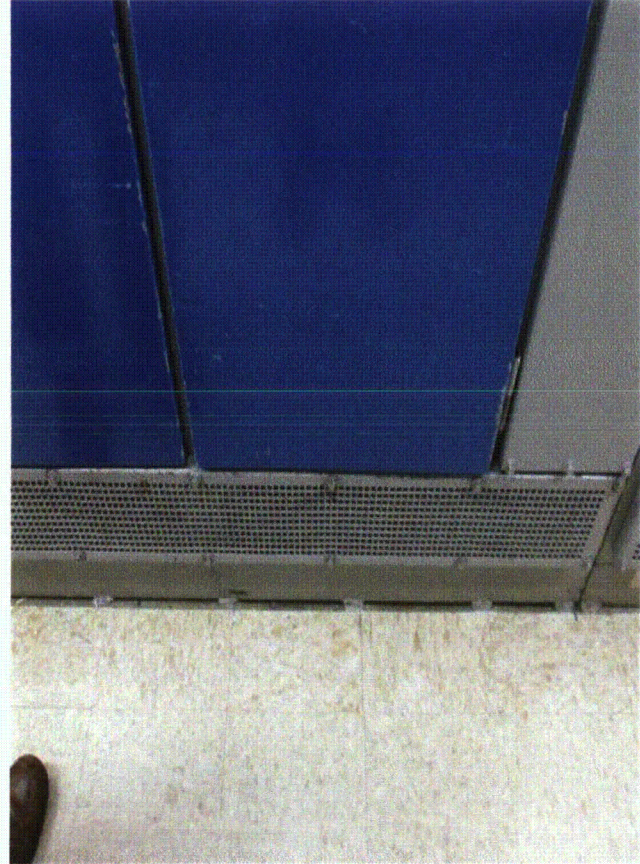
Equipment Class: (20) Instrumentation and Control Panels and Cabinets

Equipment Description: PROTECTION SYSTEM CABINET (I&E Prot. Cab. CH 3)

Photos



1PA03J 7-16-12 011



1PA03J 7-16-12 012

Status: Y N U

Seismic Walkdown Checklist (SWC)

Equipment ID No.: 1PA03J

Equipment Class: (20) Instrumentation and Control Panels and Cabinets

Equipment Description: PROTECTION SYSTEM CABINET (I&E Prot. Cab. CH 3)



1PA03J 7-16-12 013

Status: Y N U

Seismic Walkdown Checklist (SWC)

Equipment ID No.: 1PA07J

Equipment Class: (20) Instrumentation and Control Panels and Cabinets

Equipment Description: PROC I&C RACK CONT GRP 3 CAB 7

Project: Braidwood 1 SWEL

Location (Bldg, Elev, Room/Area): Auxiliary, 451.00 ft, ALL

Manufacturer/Model:

Instructions for Completing Checklist

This checklist may be used to document the results of the Seismic Walkdown of an item of equipment on the SWEL. The space below each of the following questions may be used to record the results of judgments and findings. Additional space is provided at the end of this checklist for documenting other comments.

Anchorage

1. Is anchorage configuration verification required (i.e., is the item one of the 50% of SWEL items requiring such verification)? Yes

2. Is the anchorage free of bent, broken, missing or loose hardware? Yes

3. Is the anchorage free of corrosion that is more than mild surface oxidation? Yes

4. Is the anchorage free of visible cracks in the concrete near the anchors? Yes

5. Is the anchorage configuration consistent with plant documentation? (Note: This question only applies if the item is one of the 50% for which an anchorage configuration verification is required.) Yes
Drawing 20E-0-3391C Revision BM Detail for miscellaneous racks

6. Based on the above anchorage evaluations, is the anchorage free of potentially adverse seismic conditions? Yes

Status: Y N U

Seismic Walkdown Checklist (SWC)

Equipment ID No.: 1PA07J

Equipment Class: (20) Instrumentation and Control Panels and Cabinets

Equipment Description: PROC I&C RACK CONT GRP 3 CAB 7

Interaction Effects

7. Are soft targets free from impact by nearby equipment or structures? Yes
8. Are overhead equipment, distribution systems, ceiling tiles and lighting, and masonry block walls not likely to collapse onto the equipment? Yes
9. Do attached lines have adequate flexibility to avoid damage? Yes
10. Based on the above seismic interaction evaluations, is equipment free of potentially adverse seismic interaction effects? Yes

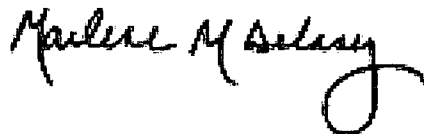
Other Adverse Conditions

11. Have you looked for and found no adverse seismic conditions that could adversely affect the safety functions of the equipment? Yes

Comments

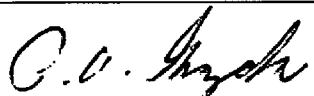
Seismic walkdown performed week of 7/16/12 by M. Delaney & P. Gazda

Evaluated by:



Marlene Delaney

Date: 10/1/2012



Philip Gazda

10/1/2012

Status: Y N U

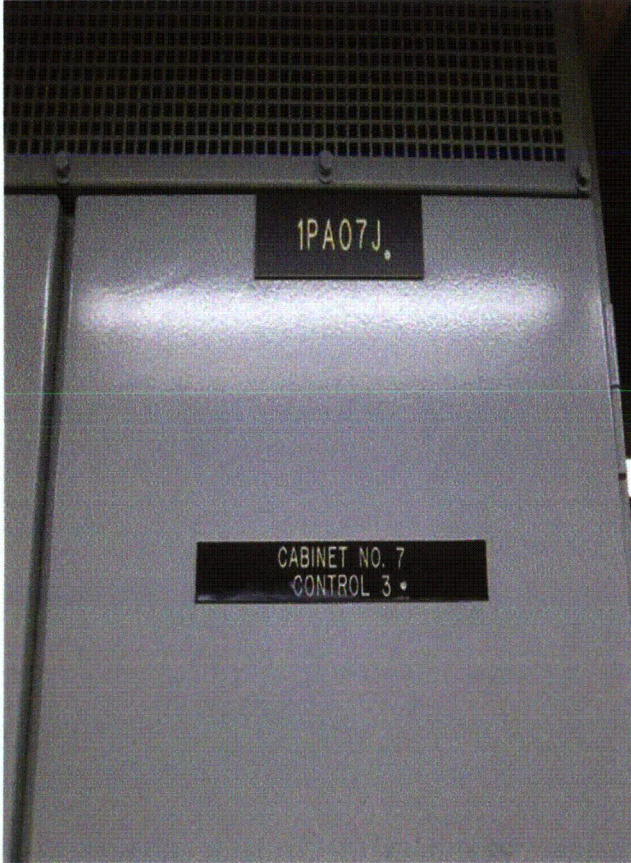
Seismic Walkdown Checklist (SWC)

Equipment ID No.: 1PA07J

Equipment Class: (20) Instrumentation and Control Panels and Cabinets

Equipment Description: PROC I&C RACK CONT GRP 3 CAB 7

Photos



1PA07J 7-16-12 014



1PA07J 7-16-12 015

Status: Y N U

Seismic Walkdown Checklist (SWC)

Equipment ID No.: 1PA14J

Equipment Class: (20) Instrumentation and Control Panels and Cabinets

Equipment Description: ESF SEQUENCING & ACTUATION CABINET TRAIN B

Project: Braidwood 1 SWEL

Location (Bldg, Elev, Room/Area): Auxiliary, 451.00 ft, ALL

Manufacturer/Model:

Instructions for Completing Checklist

This checklist may be used to document the results of the Seismic Walkdown of an item of equipment on the SWEL. The space below each of the following questions may be used to record the results of judgments and findings. Additional space is provided at the end of this checklist for documenting other comments.

Anchorage

1. Is anchorage configuration verification required (i.e., is the item one of the 50% of SWEL items requiring such verification)? Yes

2. Is the anchorage free of bent, broken, missing or loose hardware? Yes

3. Is the anchorage free of corrosion that is more than mild surface oxidation? Yes

4. Is the anchorage free of visible cracks in the concrete near the anchors? Yes
Tile floor so cracks can't be seen

5. Is the anchorage configuration consistent with plant documentation? (Note: This question only applies if the item is one of the 50% for which an anchorage configuration verification is required.) Yes
Drawing 20E-0-3391C Revision BM Mounting of Sequencing & Act. Cabinet 1PA14J
Weld exceeds drawing requirements

6. Based on the above anchorage evaluations, is the anchorage free of potentially adverse seismic conditions? Yes

Status: Y N U

Seismic Walkdown Checklist (SWC)

Equipment ID No.: 1PA14J

Equipment Class: (20) Instrumentation and Control Panels and Cabinets

Equipment Description: ESF SEQUENCING & ACTUATION CABINET TRAIN B

Interaction Effects

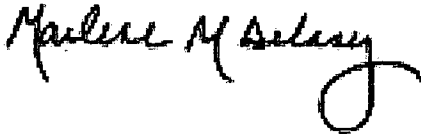
7. Are soft targets free from impact by nearby equipment or structures? Yes
8. Are overhead equipment, distribution systems, ceiling tiles and lighting, and masonry block walls not likely to collapse onto the equipment? Yes
9. Do attached lines have adequate flexibility to avoid damage? Yes
10. Based on the above seismic interaction evaluations, is equipment free of potentially adverse seismic interaction effects? Yes

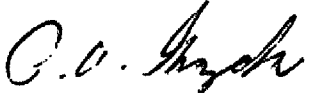
Other Adverse Conditions

11. Have you looked for and found no adverse seismic conditions that could adversely affect the safety functions of the equipment? Yes

Comments

Seismic walkdown performed week of 7/16/12 by M. Delaney & P. Gazda

Evaluated by:  Marlene Delaney Date: 10/1/2012

 Philip Gazda 10/1/2012

Status: Y N U

Seismic Walkdown Checklist (SWC)

Equipment ID No.: 1PA14J

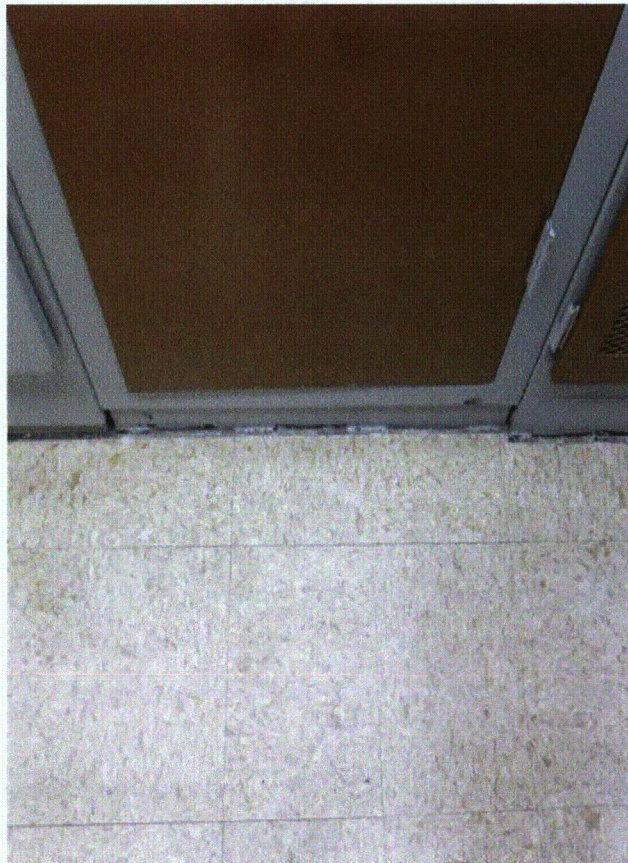
Equipment Class: (20) Instrumentation and Control Panels and Cabinets

Equipment Description: ESF SEQUENCING & ACTUATION CABINET TRAIN B

Photos



1PA14J 7-16-12 016



1PA14J 7-16-12 017

Status: Y N U

Seismic Walkdown Checklist (SWC)

Equipment ID No.: 1PA14J

Equipment Class: (20) Instrumentation and Control Panels and Cabinets

Equipment Description: ESF SEQUENCING & ACTUATION CABINET TRAIN B



1PA14J 7-16-12 018

Status: Y N U

Seismic Walkdown Checklist (SWC)

Equipment ID No.: 1PA28J

Equipment Class: (20) Instrumentation and Control Panels and Cabinets

Equipment Description: AUX SAFEGUARD RELAY CABINET (B)

Project: Braidwood 1 SWEL

Location (Bldg, Elev, Room/Area): Auxiliary, 451.00 ft, ALL

Manufacturer/Model:

Instructions for Completing Checklist

This checklist may be used to document the results of the Seismic Walkdown of an item of equipment on the SWEL. The space below each of the following questions may be used to record the results of judgments and findings. Additional space is provided at the end of this checklist for documenting other comments.

Anchorage

1. Is anchorage configuration verification required (i.e., is the item one of the 50% of SWEL items requiring such verification)? Yes

2. Is the anchorage free of bent, broken, missing or loose hardware? Yes

3. Is the anchorage free of corrosion that is more than mild surface oxidation? Yes

4. Is the anchorage free of visible cracks in the concrete near the anchors? Yes

5. Is the anchorage configuration consistent with plant documentation? (Note: This question only applies if the item is one of the 50% for which an anchorage configuration verification is required.) Yes
*Weld exceeds drawing dimensions. Drawing 20E-0-3391C Revision BM
Mounting Detail for Miscellaneous Racks*

6. Based on the above anchorage evaluations, is the anchorage free of potentially adverse seismic conditions? Yes

Status: Y N U

Seismic Walkdown Checklist (SWC)

Equipment ID No.: 1PA28J

Equipment Class: (20) Instrumentation and Control Panels and Cabinets

Equipment Description: AUX SAFEGUARD RELAY CABINET (B)

Interaction Effects

7. Are soft targets free from impact by nearby equipment or structures? Yes
8. Are overhead equipment, distribution systems, ceiling tiles and lighting, and masonry block walls not likely to collapse onto the equipment? Yes
9. Do attached lines have adequate flexibility to avoid damage? Yes
10. Based on the above seismic interaction evaluations, is equipment free of potentially adverse seismic interaction effects? Yes

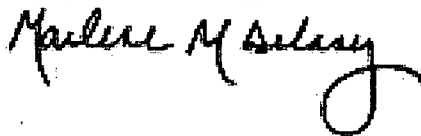
Other Adverse Conditions

11. Have you looked for and found no adverse seismic conditions that could adversely affect the safety functions of the equipment? Yes

Comments

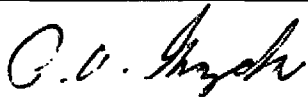
Seismic walkdown performed week of 7/16/12 by M. Delaney & P. Gazda

Evaluated by:



Marlene Delaney

Date: 10/1/2012



Philip Gazda

10/1/2012

Status: Y N U

Seismic Walkdown Checklist (SWC)

Equipment ID No.: 1PA28J

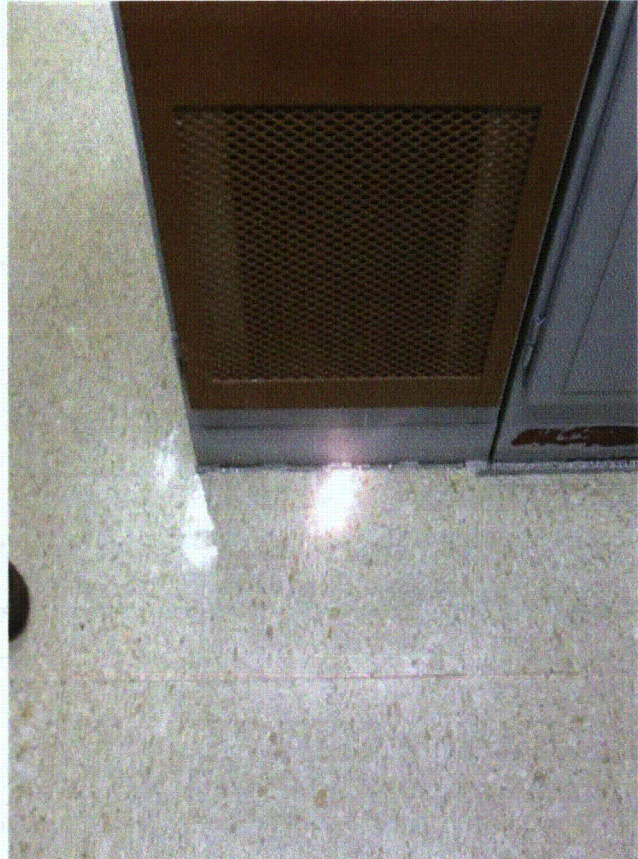
Equipment Class: (20) Instrumentation and Control Panels and Cabinets

Equipment Description: AUX SAFEGUARD RELAY CABINET (B)

Photos



1PA28J 7-16-12 019



1PA28J 7-16-12 020

Status: Y N U

Seismic Walkdown Checklist (SWC)

Equipment ID No.: 1PA28J

Equipment Class: (20) Instrumentation and Control Panels and Cabinets

Equipment Description: AUX SAFEGUARD RELAY CABINET (B)



1PA28J 7-16-12 021

Status: Y N U

Seismic Walkdown Checklist (SWC)

Equipment ID No.: 1PA34J

Equipment Class: (20) Instrumentation and Control Panels and Cabinets

Equipment Description: CONTROL SYSTEM CABINET ESF DIV. 12

Project: Braidwood 1 SWEL

Location (Bldg, Elev, Room/Area): Auxiliary, 451.00 ft, ALL

Manufacturer/Model:

Instructions for Completing Checklist

This checklist may be used to document the results of the Seismic Walkdown of an item of equipment on the SWEL. The space below each of the following questions may be used to record the results of judgments and findings. Additional space is provided at the end of this checklist for documenting other comments.

Anchorage

1. Is anchorage configuration verification required (i.e., is the item one of the 50% of SWEL items requiring such verification)? Yes

2. Is the anchorage free of bent, broken, missing or loose hardware? Yes

3. Is the anchorage free of corrosion that is more than mild surface oxidation? Yes

4. Is the anchorage free of visible cracks in the concrete near the anchors? Yes

5. Is the anchorage configuration consistent with plant documentation? (Note: This question only applies if the item is one of the 50% for which an anchorage configuration verification is required.)
*Weld exceeds drawing dimensions. Drawing 20E-0-3391C Revision BM
Mounting Detail for Misc. Racks* Yes

6. Based on the above anchorage evaluations, is the anchorage free of potentially adverse seismic conditions? Yes

Status: Y N U

Seismic Walkdown Checklist (SWC)

Equipment ID No.: 1PA34J

Equipment Class: (20) Instrumentation and Control Panels and Cabinets

Equipment Description: CONTROL SYSTEM CABINET ESF DIV. 12

Interaction Effects

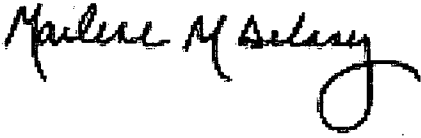
7. Are soft targets free from impact by nearby equipment or structures? Yes
See AWC 3 for discussion on test cabinet.
8. Are overhead equipment, distribution systems, ceiling tiles and lighting, and masonry block walls not likely to collapse onto the equipment? Yes
Overhead lights on rods and secure.
9. Do attached lines have adequate flexibility to avoid damage? Yes
10. Based on the above seismic interaction evaluations, is equipment free of potentially adverse seismic interaction effects? Yes

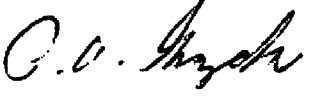
Other Adverse Conditions

11. Have you looked for and found no adverse seismic conditions that could adversely affect the safety functions of the equipment? Yes

Comments

Seismic walkdown performed week of 7/16/12 by M. Delaney & P. Gazda

Evaluated by:  Marlene Delaney Date: 10/1/2012

 Philip Gazda 10/1/2012

Status: Y N U

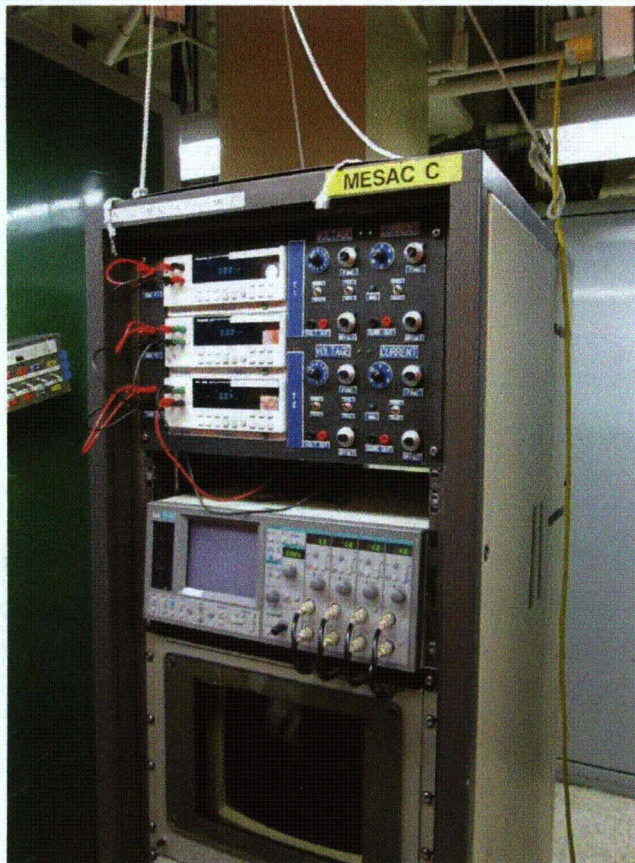
Seismic Walkdown Checklist (SWC)

Equipment ID No.: 1PA34J

Equipment Class: (20) Instrumentation and Control Panels and Cabinets

Equipment Description: CONTROL SYSTEM CABINET ESF DIV. 12

Photos



1PA34J (AWB Test Panel) 7-16-12 024



1PA34J (AWB Test Panel) 7-16-12 025

Status: Y N U

Seismic Walkdown Checklist (SWC)

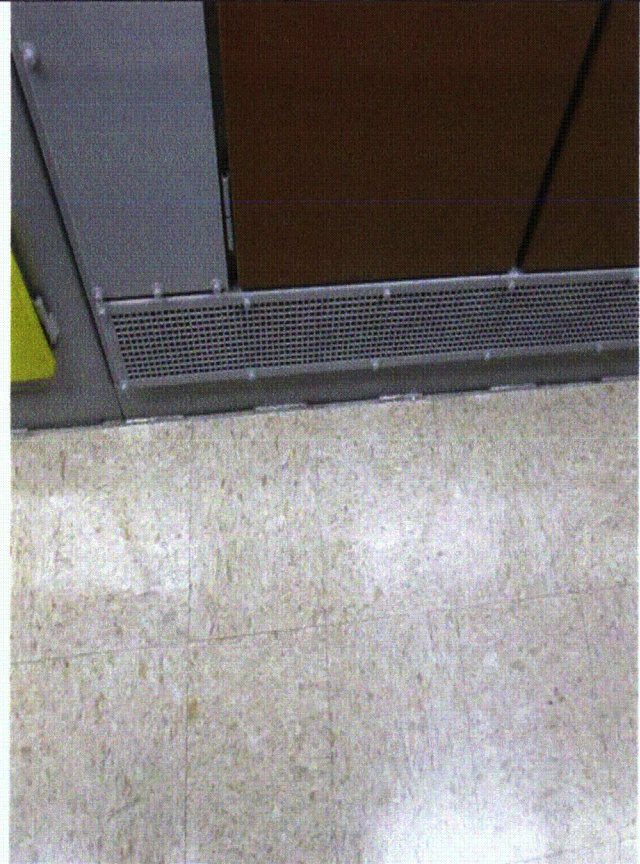
Equipment ID No.: 1PA34J

Equipment Class: (20) Instrumentation and Control Panels and Cabinets

Equipment Description: CONTROL SYSTEM CABINET ESF DIV. 12



1PA34J 7-16-12 022



1PA34J 7-16-12 023

Status: Y N U

Seismic Walkdown Checklist (SWC)

Equipment ID No.: 1PI-0627

Equipment Class: (18) Instruments on Racks

Equipment Description: GAUGE; PRESSURE, U.S. GAUGE CO.,0-160 PSIG

Project: Braidwood 1 SWEL

Location (Bldg, Elev, Room/Area): FH, 401.00 ft, ALL

Manufacturer/Model:

Instructions for Completing Checklist

This checklist may be used to document the results of the Seismic Walkdown of an item of equipment on the SWEL. The space below each of the following questions may be used to record the results of judgments and findings. Additional space is provided at the end of this checklist for documenting other comments.

Anchorage

- | | |
|--|----------------|
| 1. Is anchorage configuration verification required (i.e., is the item one of the 50% of SWEL items requiring such verification)? | No |
| 2. Is the anchorage free of bent, broken, missing or loose hardware? | Not Applicable |
| 3. Is the anchorage free of corrosion that is more than mild surface oxidation? | Not Applicable |
| 4. Is the anchorage free of visible cracks in the concrete near the anchors? | Not Applicable |
| 5. Is the anchorage configuration consistent with plant documentation? (Note: This question only applies if the item is one of the 50% for which an anchorage configuration verification is required.) | Not Applicable |
| 6. Based on the above anchorage evaluations, is the anchorage free of potentially adverse seismic conditions? | Yes |

Status: Y N U

Seismic Walkdown Checklist (SWC)

Equipment ID No.: 1PI-0627

Equipment Class: (18) Instruments on Racks

Equipment Description: GAUGE; PRESSURE, U.S. GAUGE CO., 0-160 PSIG

Interaction Effects

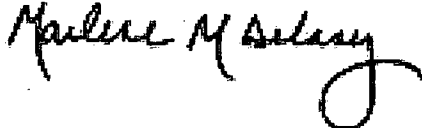
7. Are soft targets free from impact by nearby equipment or structures? Yes
8. Are overhead equipment, distribution systems, ceiling tiles and lighting, and masonry block walls not likely to collapse onto the equipment? Yes
9. Do attached lines have adequate flexibility to avoid damage? Yes
10. Based on the above seismic interaction evaluations, is equipment free of potentially adverse seismic interaction effects? Yes

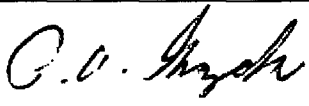
Other Adverse Conditions

11. Have you looked for and found no adverse seismic conditions that could adversely affect the safety functions of the equipment? Yes

Comments

Seismic walkdown performed week of 7/16/12 by M. Delaney & P. Gazda

Evaluated by:  Marlene Delaney Date: 10/1/2012

 Philip Gazda 10/1/2012

Status: Y N U

Seismic Walkdown Checklist (SWC)

Equipment ID No.: 1PI-0627

Equipment Class: (18) Instruments on Racks

Equipment Description: GAUGE; PRESSURE, U.S. GAUGE CO.,0-160 PSIG

Photos

None.

Status: Y N U

Seismic Walkdown Checklist (SWC)

Equipment ID No.: 1PI-0633

Equipment Class: (18) Instruments on Racks

Equipment Description: SPENT FUEL PIT PUMP SUCTION PRESSURE INDICATO

Project: Braidwood 1 SWEL

Location (Bldg, Elev, Room/Area): FH, 401.00 ft, ALL

Manufacturer/Model:

Instructions for Completing Checklist

This checklist may be used to document the results of the Seismic Walkdown of an item of equipment on the SWEL. The space below each of the following questions may be used to record the results of judgments and findings. Additional space is provided at the end of this checklist for documenting other comments.

Anchorage

1. Is anchorage configuration verification required (i.e., is the item one of the 50% of SWEL items requiring such verification)? No

2. Is the anchorage free of bent, broken, missing or loose hardware? Not Applicable

3. Is the anchorage free of corrosion that is more than mild surface oxidation? Not Applicable

4. Is the anchorage free of visible cracks in the concrete near the anchors? Not Applicable

5. Is the anchorage configuration consistent with plant documentation? (Note: This question only applies if the item is one of the 50% for which an anchorage configuration verification is required.) Not Applicable

6. Based on the above anchorage evaluations, is the anchorage free of potentially adverse seismic conditions? Yes
Instrument attached a rack that is well-anchored to the wall.

Status: Y N U

Seismic Walkdown Checklist (SWC)

Equipment ID No.: 1PI-0633

Equipment Class: (18) Instruments on Racks

Equipment Description: SPENT FUEL PIT PUMP SUCTION PRESSURE INDICATO

Interaction Effects

7. Are soft targets free from impact by nearby equipment or structures? Yes
8. Are overhead equipment, distribution systems, ceiling tiles and lighting, and masonry block walls not likely to collapse onto the equipment? Yes
See AWC 30 for discussion on seismic housekeeping issue
9. Do attached lines have adequate flexibility to avoid damage? Yes
10. Based on the above seismic interaction evaluations, is equipment free of potentially adverse seismic interaction effects? Yes

Other Adverse Conditions

11. Have you looked for and found no adverse seismic conditions that could adversely affect the safety functions of the equipment? Yes

Comments

Seismic walkdown performed week of 7/16/12 by M. Delaney & P. Gazda

Evaluated by: Marlene M Delaney Marlene Delaney Date: 10/1/2012

P. P. Gazda Philip Gazda 10/1/2012

Status: Y N U

Seismic Walkdown Checklist (SWC)

Equipment ID No.: 1PI-0633

Equipment Class: (18) Instruments on Racks

Equipment Description: SPENT FUEL PIT PUMP SUCTION PRESSURE INDICATO

Photos



1PI-0633 (AWB - housekeeping) 7-18-12 080



1PI-0633 7-18-12 079

Status: Y N U

Seismic Walkdown Checklist (SWC)

Equipment ID No.: 1PL08J

Equipment Class: (20) Instrumentation and Control Panels and Cabinets

Equipment Description: 1B DG CONTROL PANEL

Project: Braidwood 1 SWEL

Location (Bldg, Elev, Room/Area): Auxiliary, 401-00 ft, ALL

Manufacturer/Model:

Instructions for Completing Checklist

This checklist may be used to document the results of the Seismic Walkdown of an item of equipment on the SWEL. The space below each of the following questions may be used to record the results of judgments and findings. Additional space is provided at the end of this checklist for documenting other comments.

Anchorage

1. Is anchorage configuration verification required (i.e., is the item one of the 50% of SWEL items requiring such verification)? No

2. Is the anchorage free of bent, broken, missing or loose hardware? Yes
welded at base

3. Is the anchorage free of corrosion that is more than mild surface oxidation? Yes

4. Is the anchorage free of visible cracks in the concrete near the anchors? Yes

5. Is the anchorage configuration consistent with plant documentation? (Note: This question only applies if the item is one of the 50% for which an anchorage configuration verification is required.) Not Applicable

6. Based on the above anchorage evaluations, is the anchorage free of potentially adverse seismic conditions? Yes

Status: Y N U

Seismic Walkdown Checklist (SWC)

Equipment ID No.: 1PL08J

Equipment Class: (20) Instrumentation and Control Panels and Cabinets

Equipment Description: 1B DG CONTROL PANEL

Interaction Effects

7. Are soft targets free from impact by nearby equipment or structures? Yes
8. Are overhead equipment, distribution systems, ceiling tiles and lighting, and masonry block walls not likely to collapse onto the equipment? Yes
9. Do attached lines have adequate flexibility to avoid damage? Yes
10. Based on the above seismic interaction evaluations, is equipment free of potentially adverse seismic interaction effects? Yes

Other Adverse Conditions

11. Have you looked for and found no adverse seismic conditions that could adversely affect the safety functions of the equipment? Yes

Comments

Seismic walkdown performed week of 7/16/12 by M. Delaney & P. Gazda

Evaluated by: Marlene M Delaney Marlene Delaney Date: 10/1/2012

P. V. Gazda Philip Gazda 10/1/2012

Status: Y N U

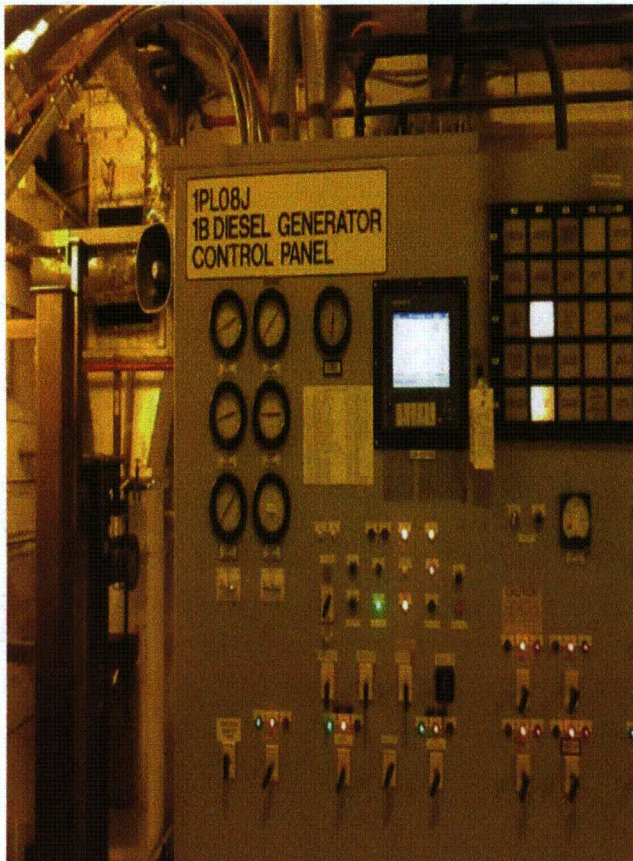
Seismic Walkdown Checklist (SWC)

Equipment ID No.: 1PL08J

Equipment Class: (20) Instrumentation and Control Panels and Cabinets

Equipment Description: 1B DG CONTROL PANEL

Photos



1PL08J 7-16-12 081



1PL08J 7-16-12 082

Status: Y N U

Seismic Walkdown Checklist (SWC)

Equipment ID No.: 1PL08J

Equipment Class: (20) Instrumentation and Control Panels and Cabinets

Equipment Description: 1B DG CONTROL PANEL



1PL08J 7-16-12 083

Status: Y N U

Seismic Walkdown Checklist (SWC)

Equipment ID No.: 1PM05J

Equipment Class: (20) Instrumentation and Control Panels and Cabinets

Equipment Description: MAIN CONTROL BOARD

Project: Braidwood 1 SWEL

Location (Bldg, Elev, Room/Area): Auxiliary, 451.00 ft, ALL

Manufacturer/Model:

Instructions for Completing Checklist

This checklist may be used to document the results of the Seismic Walkdown of an item of equipment on the SWEL. The space below each of the following questions may be used to record the results of judgments and findings. Additional space is provided at the end of this checklist for documenting other comments.

Anchorage

1. Is anchorage configuration verification required (i.e., is the item one of the 50% of SWEL items requiring such verification)? Yes

2. Is the anchorage free of bent, broken, missing or loose hardware? Yes

3. Is the anchorage free of corrosion that is more than mild surface oxidation? Yes

4. Is the anchorage free of visible cracks in the concrete near the anchors? Yes
Exterior to panel is carpeted so cracking cannot be seen.

5. Is the anchorage configuration consistent with plant documentation? (Note: This question only applies if the item is one of the 50% for which an anchorage configuration verification is required.) Yes
Back of panel opened at all locations and weld detail verified. Front of panel, one cabinet opened due to accessibility issues. Outer cabinet weld detail could be verified based on exterior visual inspection. Based on the inspection, the anchorage is acceptable.
Drawing 20E-0-3391AT Revision V

6. Based on the above anchorage evaluations, is the anchorage free of potentially adverse seismic conditions? Yes

Status: Y N U

Seismic Walkdown Checklist (SWC)

Equipment ID No.: 1PM05J

Equipment Class: (20) Instrumentation and Control Panels and Cabinets

Equipment Description: MAIN CONTROL BOARD

Interaction Effects

7. Are soft targets free from impact by nearby equipment or structures? Yes
Adjacent cabinets (1PM05J and 1PM06J) are bolted together.
8. Are overhead equipment, distribution systems, ceiling tiles and lighting, and masonry block walls not likely to collapse onto the equipment? Yes
See Area Walk-by 2.
9. Do attached lines have adequate flexibility to avoid damage? Yes
10. Based on the above seismic interaction evaluations, is equipment free of potentially adverse seismic interaction effects? Yes
-

Other Adverse Conditions

11. Have you looked for and found no adverse seismic conditions that could adversely affect the safety functions of the equipment? Yes
-

Comments

Seismic walkdown performed week of 7/16/12 by M. Delaney & P. Gazda

Status: Y N U

Seismic Walkdown Checklist (SWC)

Equipment ID No.: 1PM05J

Equipment Class: (20) Instrumentation and Control Panels and Cabinets

Equipment Description: MAIN CONTROL BOARD

Marlene M Delaney

Evaluated by:

Marlene Delaney

Date: 10/1/2012

P. O. Gazda

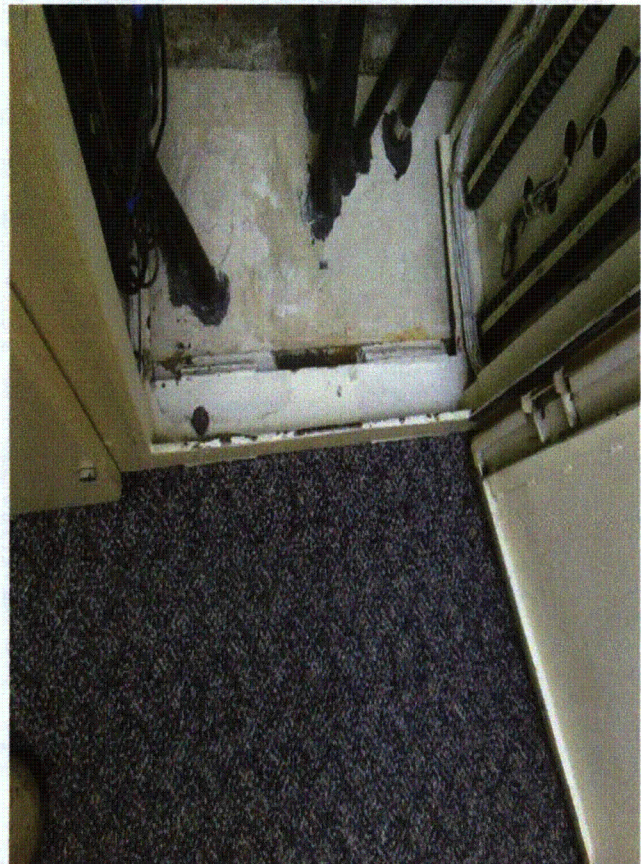
Philip Gazda

10/1/2012

Photos



1PM05J 7-16-12 005



1PM05J 7-16-12 006

Status: Y N U

Seismic Walkdown Checklist (SWC)

Equipment ID No.: 1PM05J

Equipment Class: (20) Instrumentation and Control Panels and Cabinets

Equipment Description: MAIN CONTROL BOARD



1PM05J 7-16-12 007

Status: Y N U

Seismic Walkdown Checklist (SWC)

Equipment ID No.: 1PT-0516

Equipment Class: (18) Instruments on Racks

Equipment Description: S/G LOOP 1A STM PRESS XMTTR

Project: Braidwood 1 SWEL

Location (Bldg, Elev, Room/Area): Auxiliary, 377.00 ft, ALL

Manufacturer/Model:

Instructions for Completing Checklist

This checklist may be used to document the results of the Seismic Walkdown of an item of equipment on the SWEL. The space below each of the following questions may be used to record the results of judgments and findings. Additional space is provided at the end of this checklist for documenting other comments.

Anchorage

1. Is anchorage configuration verification required (i.e., is the item one of the 50% of SWEL items requiring such verification)? No

2. Is the anchorage free of bent, broken, missing or loose hardware? Not Applicable

3. Is the anchorage free of corrosion that is more than mild surface oxidation? Not Applicable

4. Is the anchorage free of visible cracks in the concrete near the anchors? Not Applicable

5. Is the anchorage configuration consistent with plant documentation? (Note: This question only applies if the item is one of the 50% for which an anchorage configuration verification is required.) Not Applicable

6. Based on the above anchorage evaluations, is the anchorage free of potentially adverse seismic conditions? Yes
*Instrument mounted to rack with detail specified on Drawing M-33 Sheet 108.
Rack is well-anchored.*

Status: Y N U

Seismic Walkdown Checklist (SWC)

Equipment ID No.: 1PT-0516

Equipment Class: (18) Instruments on Racks

Equipment Description: S/G LOOP 1A STM PRESS XMTR

Interaction Effects

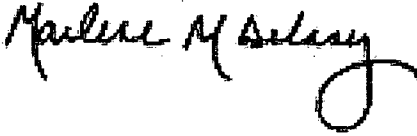
7. Are soft targets free from impact by nearby equipment or structures? Yes
8. Are overhead equipment, distribution systems, ceiling tiles and lighting, and masonry block walls not likely to collapse onto the equipment? Yes
Nearby scaffolding is tied off to prevent contact. Other plant components prevent scaffold from impacting instrument.
9. Do attached lines have adequate flexibility to avoid damage? Yes
10. Based on the above seismic interaction evaluations, is equipment free of potentially adverse seismic interaction effects? Yes

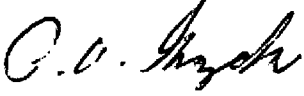
Other Adverse Conditions

11. Have you looked for and found no adverse seismic conditions that could adversely affect the safety functions of the equipment? Yes

Comments

Seismic walkdown performed week of 7/16/12 by M. Delaney & P. Gazda

Evaluated by:  Marlene Delaney Date: 10/1/2012

 Philip Gazda 10/1/2012

Status: Y N U

Seismic Walkdown Checklist (SWC)

Equipment ID No.: 1PT-0516

Equipment Class: (18) Instruments on Racks

Equipment Description: S/G LOOP 1A STM PRESS XMTTR

Photos

None.

Status: Y N U

Seismic Walkdown Checklist (SWC)

Equipment ID No.: 1RH01PB

Equipment Class: (6) Vertical Pumps

Equipment Description: PUMP, 1B RESIDUAL HEAT REMOVAL ASMBLY

Project: Braidwood 1 SWEL

Location (Bldg, Elev, Room/Area): Auxiliary, 364.00 ft, ALL

Manufacturer/Model:

Instructions for Completing Checklist

This checklist may be used to document the results of the Seismic Walkdown of an item of equipment on the SWEL. The space below each of the following questions may be used to record the results of judgments and findings. Additional space is provided at the end of this checklist for documenting other comments.

Anchorage

1. Is anchorage configuration verification required (i.e., is the item one of the 50% of SWEL items requiring such verification)? Yes

2. Is the anchorage free of bent, broken, missing or loose hardware? Yes

3. Is the anchorage free of corrosion that is more than mild surface oxidation? Yes

4. Is the anchorage free of visible cracks in the concrete near the anchors? Yes

5. Is the anchorage configuration consistent with plant documentation? (Note: This question only applies if the item is one of the 50% for which an anchorage configuration verification is required.)
Drawing M-1219 Sheet 2 Revision Y Yes

6. Based on the above anchorage evaluations, is the anchorage free of potentially adverse seismic conditions? Yes

Status: Y N U

Seismic Walkdown Checklist (SWC)

Equipment ID No.: 1RH01PB

Equipment Class: (6) Vertical Pumps

Equipment Description: PUMP,1B RESIDUAL HEAT REMOVAL ASMBLY

Interaction Effects

7. Are soft targets free from impact by nearby equipment or structures? Yes
8. Are overhead equipment, distribution systems, ceiling tiles and lighting, and masonry block walls not likely to collapse onto the equipment? Yes
9. Do attached lines have adequate flexibility to avoid damage? Yes
10. Based on the above seismic interaction evaluations, is equipment free of potentially adverse seismic interaction effects? Yes

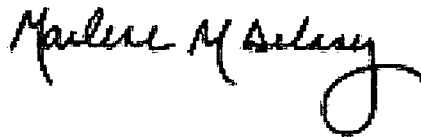
Other Adverse Conditions

11. Have you looked for and found no adverse seismic conditions that could adversely affect the safety functions of the equipment? Yes

Comments

Seismic walkdown performed week of 7/16/12 by M. Delaney & P. Gazda

Evaluated by:



Marlene Delaney

Date: 10/1/2012



Philip Gazda

10/1/2012

Status: Y N U

Seismic Walkdown Checklist (SWC)

Equipment ID No.: 1RH01PB

Equipment Class: (6) Vertical Pumps

Equipment Description: PUMP, 1B RESIDUAL HEAT REMOVAL ASMBLY

Photos



1RH01PB 7-19-12 001



1RH01PB 7-19-12 002

Status: Y N U

Seismic Walkdown Checklist (SWC)

Equipment ID No.: 1RH01PB-A

Equipment Class: (21) Tanks and Heat Exchangers

Equipment Description: RH PUMP 1B SEAL COOLER VALVE

Project: Braidwood 1 SWEL

Location (Bldg, Elev, Room/Area): Auxiliary, 346.00 ft, ALL

Manufacturer/Model:

Instructions for Completing Checklist

This checklist may be used to document the results of the Seismic Walkdown of an item of equipment on the SWEL. The space below each of the following questions may be used to record the results of judgments and findings. Additional space is provided at the end of this checklist for documenting other comments.

Anchorage

1. Is anchorage configuration verification required (i.e., is the item one of the 50% of SWEL items requiring such verification)? No
Component is a valve

2. Is the anchorage free of bent, broken, missing or loose hardware? Not Applicable

3. Is the anchorage free of corrosion that is more than mild surface oxidation? Not Applicable

4. Is the anchorage free of visible cracks in the concrete near the anchors? Not Applicable

5. Is the anchorage configuration consistent with plant documentation? (Note: This question only applies if the item is one of the 50% for which an anchorage configuration verification is required.) Not Applicable

6. Based on the above anchorage evaluations, is the anchorage free of potentially adverse seismic conditions? Yes

Status: Y N U

Seismic Walkdown Checklist (SWC)

Equipment ID No.: 1RH01PB-A

Equipment Class: (21) Tanks and Heat Exchangers

Equipment Description: RH PUMP 1B SEAL COOLER VALVE

Interaction Effects

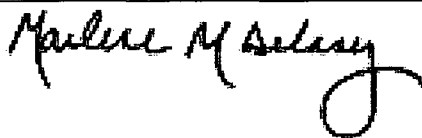
7. Are soft targets free from impact by nearby equipment or structures? Yes
8. Are overhead equipment, distribution systems, ceiling tiles and lighting, and masonry block walls not likely to collapse onto the equipment? Yes
9. Do attached lines have adequate flexibility to avoid damage? Yes
10. Based on the above seismic interaction evaluations, is equipment free of potentially adverse seismic interaction effects? Yes

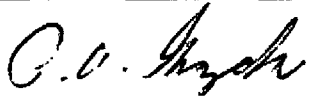
Other Adverse Conditions

11. Have you looked for and found no adverse seismic conditions that could adversely affect the safety functions of the equipment? Yes

Comments

Seismic walkdown performed week of 7/16/12 by M. Delaney & P. Gazda

Evaluated by:  Marlene Delaney Date: 10/1/2012

 Philip Gazda 10/1/2012

Status: Y N U

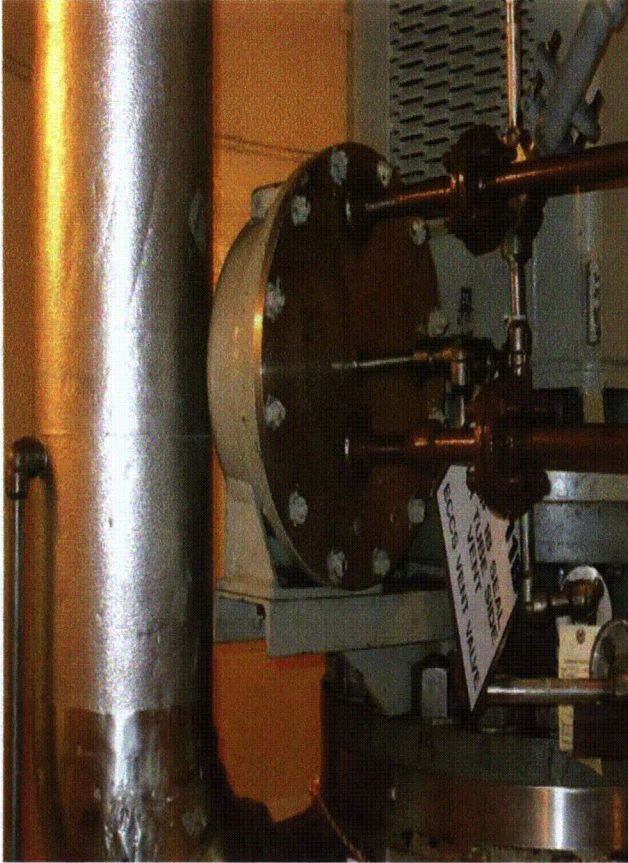
Seismic Walkdown Checklist (SWC)

Equipment ID No.: 1RH01PB-A

Equipment Class: (21) Tanks and Heat Exchangers

Equipment Description: RH PUMP 1B SEAL COOLER VALVE

Photos



1RH01PB-A 7-19-12 006

Status: Y N U

Seismic Walkdown Checklist (SWC)

Equipment ID No.: 1RH607

Equipment Class: (7) Fluid-Operated Valves

Equipment Description: RESIDUAL HEAT REMOVAL HX 1B FLOW CONT VLV ASMBLY; 8"

Project: Braidwood 1 SWEL

Location (Bldg, Elev, Room/Area): Auxiliary, 357.00 ft, ALL

Manufacturer/Model:

Instructions for Completing Checklist

This checklist may be used to document the results of the Seismic Walkdown of an item of equipment on the SWEL. The space below each of the following questions may be used to record the results of judgments and findings. Additional space is provided at the end of this checklist for documenting other comments.

Anchorage

1. Is anchorage configuration verification required (i.e., is the item one of the 50% of SWEL items requiring such verification)? No

2. Is the anchorage free of bent, broken, missing or loose hardware? Not Applicable

3. Is the anchorage free of corrosion that is more than mild surface oxidation? Not Applicable

4. Is the anchorage free of visible cracks in the concrete near the anchors? Not Applicable

5. Is the anchorage configuration consistent with plant documentation? (Note: This question only applies if the item is one of the 50% for which an anchorage configuration verification is required.) Not Applicable

6. Based on the above anchorage evaluations, is the anchorage free of potentially adverse seismic conditions? Yes

Status: Y N U

Seismic Walkdown Checklist (SWC)

Equipment ID No.: 1RH607

Equipment Class: (7) Fluid-Operated Valves

Equipment Description: RESIDUAL HEAT REMOVAL HX 1B FLOW CONT VLV ASMBLY; 8"

Interaction Effects

7. Are soft targets free from impact by nearby equipment or structures? Yes
8. Are overhead equipment, distribution systems, ceiling tiles and lighting, and masonry block walls not likely to collapse onto the equipment?
overhead well-supported including tube track directly above valve seismic block walls Yes
9. Do attached lines have adequate flexibility to avoid damage? Yes
10. Based on the above seismic interaction evaluations, is equipment free of potentially adverse seismic interaction effects? Yes

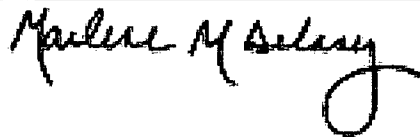
Other Adverse Conditions

11. Have you looked for and found no adverse seismic conditions that could adversely affect the safety functions of the equipment? Yes

Comments

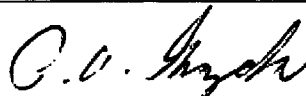
Seismic walkdown performed week of 7/16/12 by M. Delaney & P. Gazda

Evaluated by:



Marlene Delaney

Date: 10/1/2012



Philip Gazda

10/1/2012

Status: Y N U

Seismic Walkdown Checklist (SWC)

Equipment ID No.: 1RH607

Equipment Class: (7) Fluid-Operated Valves

Equipment Description: RESIDUAL HEAT REMOVAL HX 1B FLOW CONT VLV ASMBLY; 8"

Photos



1RH607 7-19-12 007



1RH607 7-19-12 008

Status: Y N U

Seismic Walkdown Checklist (SWC)

Equipment ID No.: 1SI01T

Equipment Class: (21) Tanks and Heat Exchangers

Equipment Description: REFUELING WATER STORAGE TANK

Project: Braidwood 1 SWEL

Location (Bldg, Elev, Room/Area): FH Out, 401.00 ft, ALL

Manufacturer/Model:

Instructions for Completing Checklist

This checklist may be used to document the results of the Seismic Walkdown of an item of equipment on the SWEL. The space below each of the following questions may be used to record the results of judgments and findings. Additional space is provided at the end of this checklist for documenting other comments.

Anchorage

1. Is anchorage configuration verification required (i.e., is the item one of the 50% of SWEL items requiring such verification)? No
The RWST is a reinforced concrete tank that is anchored into a reinforced concrete pad via reinforcing steel dowels. No anchorage can be verified for this component. Details shown on Drawing S-1402 Revision J and S-1404 Revision W
2. Is the anchorage free of bent, broken, missing or loose hardware? Yes
3. Is the anchorage free of corrosion that is more than mild surface oxidation? Yes
4. Is the anchorage free of visible cracks in the concrete near the anchors? Yes
5. Is the anchorage configuration consistent with plant documentation? (Note: This question only applies if the item is one of the 50% for which an anchorage configuration verification is required.) Not Applicable
6. Based on the above anchorage evaluations, is the anchorage free of potentially adverse seismic conditions? Yes

Status: Y N U

Seismic Walkdown Checklist (SWC)

Equipment ID No.: 1SI01T

Equipment Class: (21) Tanks and Heat Exchangers

Equipment Description: REFUELING WATER STORAGE TANK

Interaction Effects

7. Are soft targets free from impact by nearby equipment or structures? Yes
8. Are overhead equipment, distribution systems, ceiling tiles and lighting, and masonry block walls not likely to collapse onto the equipment? Yes
Scaffolding adjacent to the tank is well-supported. Would not adversely impact robust tank if scaffold fell.
9. Do attached lines have adequate flexibility to avoid damage? Yes
10. Based on the above seismic interaction evaluations, is equipment free of potentially adverse seismic interaction effects? Yes

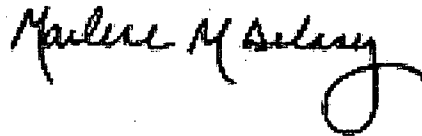
Other Adverse Conditions

11. Have you looked for and found no adverse seismic conditions that could adversely affect the safety functions of the equipment? Yes

Comments

Seismic walkdown performed week of 7/16/12 by M. Delaney & P. Gazda

Evaluated by:



Marlene Delaney

Date: 10/1/2012



Philip Gazda

10/1/2012

Status: Y N U

Seismic Walkdown Checklist (SWC)

Equipment ID No.: 1SI01T

Equipment Class: (21) Tanks and Heat Exchangers

Equipment Description: REFUELING WATER STORAGE TANK

Photos



1SI01T 7-17-12 001



1SI01T 7-17-12 002

Status: Y N U

Seismic Walkdown Checklist (SWC)

Equipment ID No.: 1SI01T

Equipment Class: (21) Tanks and Heat Exchangers

Equipment Description: REFUELING WATER STORAGE TANK



1SI01T 7-17-12 003

Status: Y N U

Seismic Walkdown Checklist (SWC)

Equipment ID No.: 1SI8801B

Equipment Class: (7) Fluid-Operated Valves

CHG PMP TO COLD LEGS INJECTION ISOL VLV (C/S AT 1PM05J)

Equipment Description: ASMBLY; 4"

Project: Braidwood 1 SWEL

Location (Bldg, Elev, Room/Area): Auxiliary, 375.00 ft, ALL

Manufacturer/Model:

Instructions for Completing Checklist

This checklist may be used to document the results of the Seismic Walkdown of an item of equipment on the SWEL. The space below each of the following questions may be used to record the results of judgments and findings. Additional space is provided at the end of this checklist for documenting other comments.

Anchorage

1. Is anchorage configuration verification required (i.e., is the item one of the 50% of SWEL items requiring such verification)? No

2. Is the anchorage free of bent, broken, missing or loose hardware? Not Applicable

3. Is the anchorage free of corrosion that is more than mild surface oxidation? Not Applicable

4. Is the anchorage free of visible cracks in the concrete near the anchors? Not Applicable

5. Is the anchorage configuration consistent with plant documentation? (Note: This question only applies if the item is one of the 50% for which an anchorage configuration verification is required.) Not Applicable

6. Based on the above anchorage evaluations, is the anchorage free of potentially adverse seismic conditions? Yes

Status: Y N U

Seismic Walkdown Checklist (SWC)

Equipment ID No.: 1SI8801B

Equipment Class: (7) Fluid-Operated Valves

CHG PMP TO COLD LEGS INJECTION ISOL VLV (C/S AT 1PM05J)

Equipment Description: ASMBLY; 4"

Interaction Effects

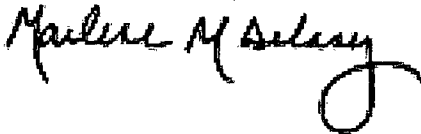
7. Are soft targets free from impact by nearby equipment or structures? Yes
8. Are overhead equipment, distribution systems, ceiling tiles and lighting, and masonry block walls not likely to collapse onto the equipment? Yes
9. Do attached lines have adequate flexibility to avoid damage? Yes
10. Based on the above seismic interaction evaluations, is equipment free of potentially adverse seismic interaction effects? Yes

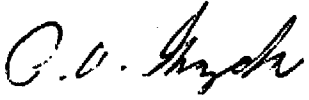
Other Adverse Conditions

11. Have you looked for and found no adverse seismic conditions that could adversely affect the safety functions of the equipment? Yes
Rugged valve

Comments

Seismic walkdown performed week of 7/16/12 by M. Delaney & P. Gazda

Evaluated by:  Marlene Delaney Date: 10/1/2012

 Philip Gazda 10/1/2012

Status: Y N U

Seismic Walkdown Checklist (SWC)

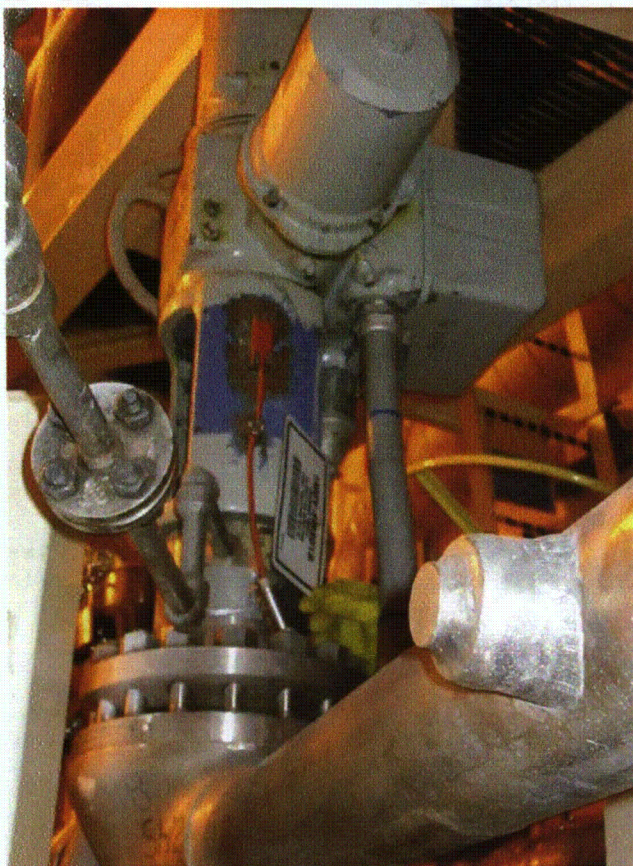
Equipment ID No.: 1SI8801B

Equipment Class: (7) Fluid-Operated Valves

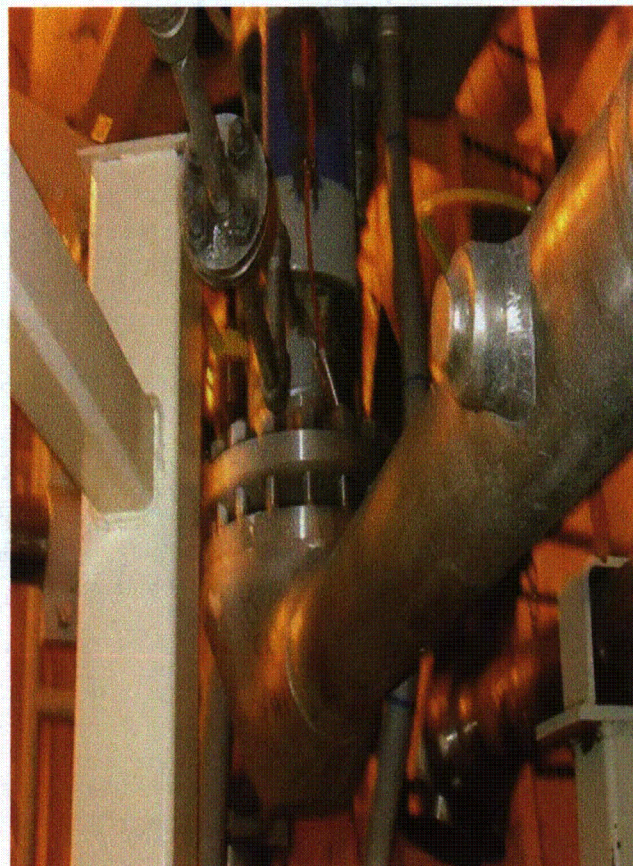
CHG PMP TO COLD LEGS INJECTION ISOL VLV (C/S AT 1PM05J)

Equipment Description: ASMBLY; 4"

Photos



1SI8801B 7-19-12 Group 2 005



1SI8801B 7-19-12 Group 2 006

Status: Y N U

Seismic Walkdown Checklist (SWC)

Equipment ID No.: 1SI8804B

Equipment Class: (8) Motor-Operated and Solenoid-Operated Valves

Equipment Description: ASSY - MOV 1B RH HX TO 1B SI PP SUCT HDR ISOL VLV

Project: Braidwood 1 SWEL

Location (Bldg, Elev, Room/Area): Auxiliary, 364.00 ft, ALL

Manufacturer/Model:

Instructions for Completing Checklist

This checklist may be used to document the results of the Seismic Walkdown of an item of equipment on the SWEL. The space below each of the following questions may be used to record the results of judgments and findings. Additional space is provided at the end of this checklist for documenting other comments.

Anchorage

1. Is anchorage configuration verification required (i.e., is the item one of the 50% of SWEL items requiring such verification)? No

2. Is the anchorage free of bent, broken, missing or loose hardware? Not Applicable

3. Is the anchorage free of corrosion that is more than mild surface oxidation? Not Applicable

4. Is the anchorage free of visible cracks in the concrete near the anchors? Not Applicable

5. Is the anchorage configuration consistent with plant documentation? (Note: This question only applies if the item is one of the 50% for which an anchorage configuration verification is required.) Not Applicable

6. Based on the above anchorage evaluations, is the anchorage free of potentially adverse seismic conditions? Yes

Status: Y N U

Seismic Walkdown Checklist (SWC)

Equipment ID No.: 1SI8804B

Equipment Class: (8) Motor-Operated and Solenoid-Operated Valves

Equipment Description: ASSY - MOV 1B RH HX TO 1B SI PP SUCT HDR ISOL VLV

Interaction Effects

7. Are soft targets free from impact by nearby equipment or structures? Yes
8. Are overhead equipment, distribution systems, ceiling tiles and lighting, and masonry block walls not likely to collapse onto the equipment? Yes
Seismic block walls
Overhead components are well-supported
9. Do attached lines have adequate flexibility to avoid damage? Yes
10. Based on the above seismic interaction evaluations, is equipment free of potentially adverse seismic interaction effects? Yes

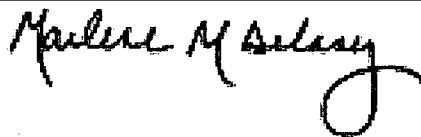
Other Adverse Conditions

11. Have you looked for and found no adverse seismic conditions that could adversely affect the safety functions of the equipment? Yes
Pipe is well-supported

Comments

Seismic walkdown performed week of 7/16/12 by M. Delaney & P. Gazda

Evaluated by:



Marlene Delaney

Date: 10/1/2012



Philip Gazda

10/1/2012

Status: Y N U

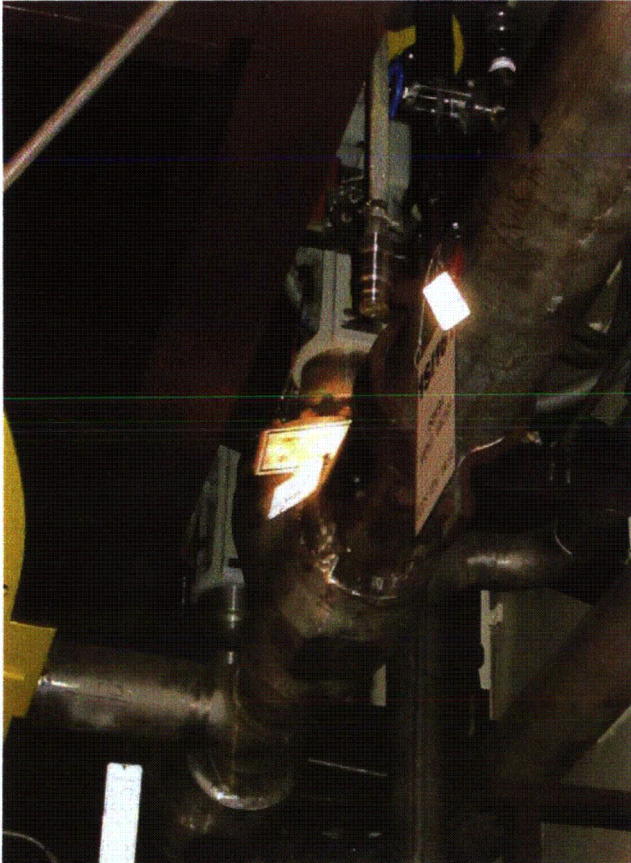
Seismic Walkdown Checklist (SWC)

Equipment ID No.: 1SI8804B

Equipment Class: (8) Motor-Operated and Solenoid-Operated Valves

Equipment Description: ASSY - MOV 1B RH HX TO 1B SI PP SUCT HDR ISOL VLV

Photos



1SI8804B 7-19-12 011



1SI8804B 7-19-12 012

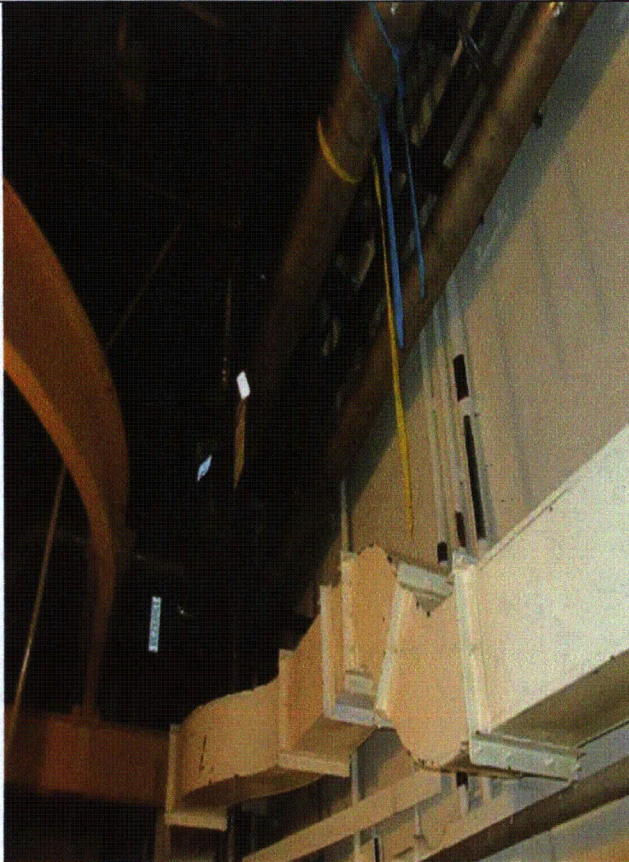
Status: Y N U

Seismic Walkdown Checklist (SWC)

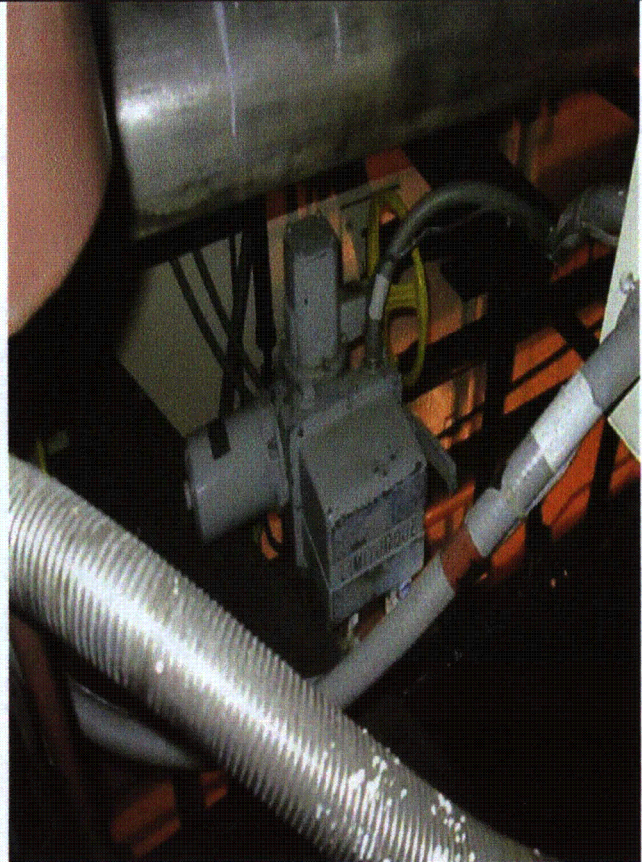
Equipment ID No.: 1SI8804B

Equipment Class: (8) Motor-Operated and Solenoid-Operated Valves

Equipment Description: ASSY - MOV 1B RH HX TO 1B SI PP SUCT HDR ISOL VLV



1SI8804B 7-19-12 013



1SI8804B 7-19-12 014

Status: Y N U

Seismic Walkdown Checklist (SWC)

Equipment ID No.: 1SI8809B

Equipment Class: (8) Motor-Operated and Solenoid-Operated Valves

Equipment Description: RH TO COLD LEGS 1B/1C ISOL VLV (1PM06J) ASMBLY; 8"

Project: Braidwood 1 SWEL

Location (Bldg, Elev, Room/Area): Auxiliary, 364.00 ft, ALL

Manufacturer/Model:

Instructions for Completing Checklist

This checklist may be used to document the results of the Seismic Walkdown of an item of equipment on the SWEL. The space below each of the following questions may be used to record the results of judgments and findings. Additional space is provided at the end of this checklist for documenting other comments.

Anchorage

- | | |
|--|----------------|
| 1. Is anchorage configuration verification required (i.e., is the item one of the 50% of SWEL items requiring such verification)? | No |
| 2. Is the anchorage free of bent, broken, missing or loose hardware? | Not Applicable |
| 3. Is the anchorage free of corrosion that is more than mild surface oxidation? | Not Applicable |
| 4. Is the anchorage free of visible cracks in the concrete near the anchors? | Not Applicable |
| 5. Is the anchorage configuration consistent with plant documentation? (Note: This question only applies if the item is one of the 50% for which an anchorage configuration verification is required.) | Not Applicable |
| 6. Based on the above anchorage evaluations, is the anchorage free of potentially adverse seismic conditions? | Yes |

Status: Y N U

Seismic Walkdown Checklist (SWC)

Equipment ID No.: 1SI8809B

Equipment Class: (8) Motor-Operated and Solenoid-Operated Valves

Equipment Description: RH TO COLD LEGS 1B/1C ISOL VLV (1PM06J) ASMBLY; 8"

Interaction Effects

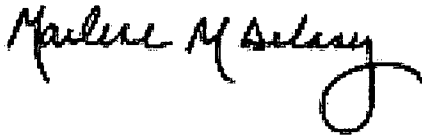
7. Are soft targets free from impact by nearby equipment or structures? Yes
8. Are overhead equipment, distribution systems, ceiling tiles and lighting, and masonry block walls not likely to collapse onto the equipment? Yes
9. Do attached lines have adequate flexibility to avoid damage? Yes
10. Based on the above seismic interaction evaluations, is equipment free of potentially adverse seismic interaction effects? Yes

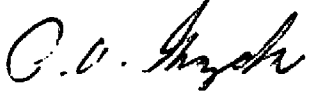
Other Adverse Conditions

11. Have you looked for and found no adverse seismic conditions that could adversely affect the safety functions of the equipment? Yes

Comments

Seismic walkdown performed week of 7/16/12 by M. Delaney & P. Gazda

Evaluated by:  Marlene Delaney Date: 10/1/2012

 Philip Gazda 10/1/2012

Status: Y N U

Seismic Walkdown Checklist (SWC)

Equipment ID No.: 1SI8809B

Equipment Class: (8) Motor-Operated and Solenoid-Operated Valves

Equipment Description: RH TO COLD LEGS 1B/1C ISOL VLV (1PM06J) ASMBLY; 8"

Photos



1SI 8809B 7-19-12 Group 2 007

Status: Y N U

Seismic Walkdown Checklist (SWC)

Equipment ID No.: 1SX004

Equipment Class: (8) Motor-Operated and Solenoid-Operated Valves

Equipment Description: CC HX 1 INLT VLV ASMBLY; 30"

Project: Braidwood 1 SWEL

Location (Bldg, Elev, Room/Area): Auxiliary, 330.00 ft, ALL

Manufacturer/Model:

Instructions for Completing Checklist

This checklist may be used to document the results of the Seismic Walkdown of an item of equipment on the SWEL. The space below each of the following questions may be used to record the results of judgments and findings. Additional space is provided at the end of this checklist for documenting other comments.

Anchorage

1. Is anchorage configuration verification required (i.e., is the item one of the 50% of SWEL items requiring such verification)? No

2. Is the anchorage free of bent, broken, missing or loose hardware? Not Applicable

3. Is the anchorage free of corrosion that is more than mild surface oxidation? Not Applicable

4. Is the anchorage free of visible cracks in the concrete near the anchors? Not Applicable

5. Is the anchorage configuration consistent with plant documentation? (Note: This question only applies if the item is one of the 50% for which an anchorage configuration verification is required.) Not Applicable

6. Based on the above anchorage evaluations, is the anchorage free of potentially adverse seismic conditions? Yes

Status: Y N U

Seismic Walkdown Checklist (SWC)

Equipment ID No.: 1SX004

Equipment Class: (8) Motor-Operated and Solenoid-Operated Valves

Equipment Description: CC HX 1 INLT VLV ASMBLY; 30"

Interaction Effects

7. Are soft targets free from impact by nearby equipment or structures? Yes
8. Are overhead equipment, distribution systems, ceiling tiles and lighting, and masonry block walls not likely to collapse onto the equipment?
above components are well-supported Yes
9. Do attached lines have adequate flexibility to avoid damage? Yes
10. Based on the above seismic interaction evaluations, is equipment free of potentially adverse seismic interaction effects? Yes

Other Adverse Conditions

11. Have you looked for and found no adverse seismic conditions that could adversely affect the safety functions of the equipment?
Pipe well-supported near valve Yes

Comments

Seismic walkdown performed week of 7/16/12 by M. Delaney & P. Gazda

Evaluated by: Marlene M. Delaney Marlene Delaney Date: 10/1/2012

Philip Gazda Philip Gazda 10/1/2012

Status: Y N U

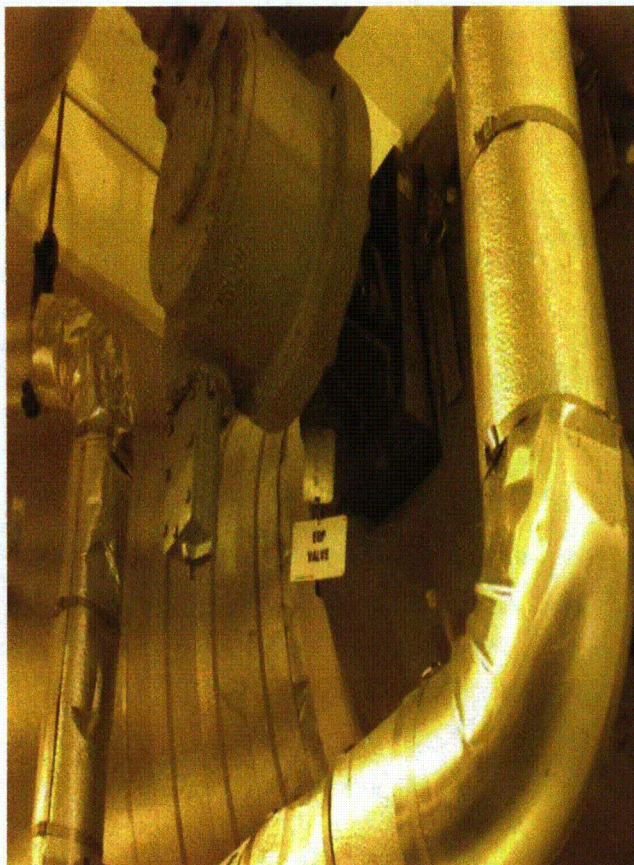
Seismic Walkdown Checklist (SWC)

Equipment ID No.: 1SX004

Equipment Class: (8) Motor-Operated and Solenoid-Operated Valves

Equipment Description: CC HX 1 INLT VLV ASMBLY; 30"

Photos



1SX004 7-18-12 049

Status: Y N U

Seismic Walkdown Checklist (SWC)

Equipment ID No.: 1SX005

Equipment Class: (8) Motor-Operated and Solenoid-Operated Valves

Equipment Description: U-0 CC HX INLT VLV ASMBLY; 30"

Project: Braidwood 1 SWEL

Location (Bldg, Elev, Room/Area): Auxiliary, 330.00 ft, ALL

Manufacturer/Model:

Instructions for Completing Checklist

This checklist may be used to document the results of the Seismic Walkdown of an item of equipment on the SWEL. The space below each of the following questions may be used to record the results of judgments and findings. Additional space is provided at the end of this checklist for documenting other comments.

Anchorage

1. Is anchorage configuration verification required (i.e., is the item one of the 50% of SWEL items requiring such verification)? No

2. Is the anchorage free of bent, broken, missing or loose hardware? Not Applicable

3. Is the anchorage free of corrosion that is more than mild surface oxidation? Not Applicable

4. Is the anchorage free of visible cracks in the concrete near the anchors? Not Applicable

5. Is the anchorage configuration consistent with plant documentation? (Note: This question only applies if the item is one of the 50% for which an anchorage configuration verification is required.) Not Applicable

6. Based on the above anchorage evaluations, is the anchorage free of potentially adverse seismic conditions? Yes

Status: Y N U

Seismic Walkdown Checklist (SWC)

Equipment ID No.: 1SX005

Equipment Class: (8) Motor-Operated and Solenoid-Operated Valves

Equipment Description: U-0 CC HX INLT VLV ASMBLY; 30"

Interaction Effects

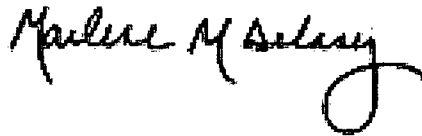
7. Are soft targets free from impact by nearby equipment or structures? Yes
8. Are overhead equipment, distribution systems, ceiling tiles and lighting, and masonry block walls not likely to collapse onto the equipment?
well-supported fire protection piping Yes
9. Do attached lines have adequate flexibility to avoid damage? Yes
10. Based on the above seismic interaction evaluations, is equipment free of potentially adverse seismic interaction effects? Yes

Other Adverse Conditions

11. Have you looked for and found no adverse seismic conditions that could adversely affect the safety functions of the equipment?
pipe is well-supported Yes

Comments

Seismic walkdown performed week of 7/16/12 by M. Delaney & P. Gazda



Evaluated by:

Marlene Delaney

Date: 10/1/2012



Philip Gazda

10/1/2012

Status: Y N U

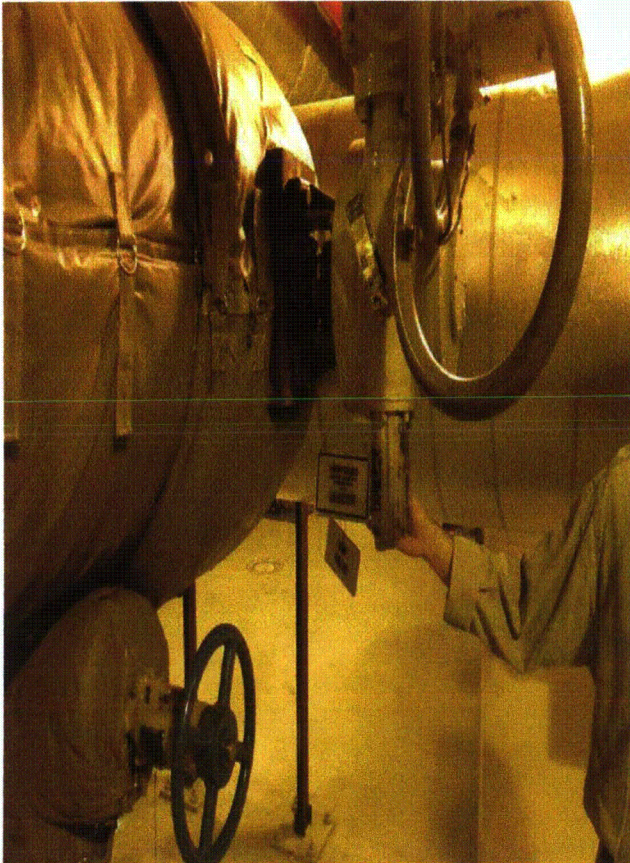
Seismic Walkdown Checklist (SWC)

Equipment ID No.: 1SX005

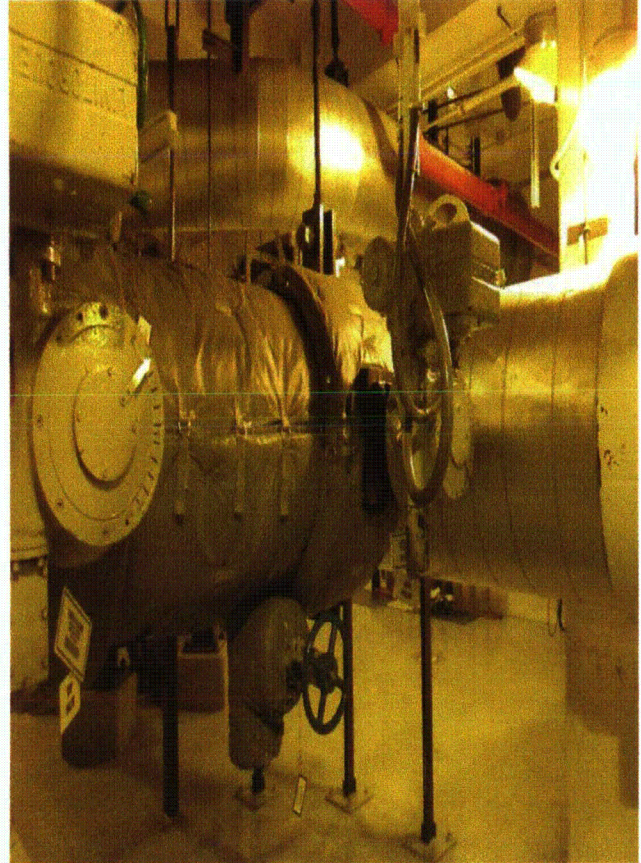
Equipment Class: (8) Motor-Operated and Solenoid-Operated Valves

Equipment Description: U-0 CC HX INLT VLV ASMBLY; 30"

Photos



1SX005 7-18-12 039



1SX005 7-18-12 040

Status: Y N U

Seismic Walkdown Checklist (SWC)

Equipment ID No.: 1SX01FB

Equipment Class: (0) Other

Equipment Description: 1B SX PP DSCH STRN

Project: Braidwood 1 SWEL

Location (Bldg, Elev, Room/Area): Auxiliary, 330.00 ft, ALL

Manufacturer/Model:

Instructions for Completing Checklist

This checklist may be used to document the results of the Seismic Walkdown of an item of equipment on the SWEL. The space below each of the following questions may be used to record the results of judgments and findings. Additional space is provided at the end of this checklist for documenting other comments.

Anchorage

1. Is anchorage configuration verification required (i.e., is the item one of the 50% of SWEL items requiring such verification)? Yes

2. Is the anchorage free of bent, broken, missing or loose hardware? Yes

3. Is the anchorage free of corrosion that is more than mild surface oxidation? Yes

4. Is the anchorage free of visible cracks in the concrete near the anchors? Yes

5. Is the anchorage configuration consistent with plant documentation? (Note: This question only applies if the item is one of the 50% for which an anchorage configuration verification is required.) Yes
Drawing M-1218 Revision AA

6. Based on the above anchorage evaluations, is the anchorage free of potentially adverse seismic conditions? Yes

Status: Y N U

Seismic Walkdown Checklist (SWC)

Equipment ID No.: 1SX01FB

Equipment Class: (0) Other

Equipment Description: 1B SX PP DSCH STRN

Interaction Effects

7. Are soft targets free from impact by nearby equipment or structures? Yes
8. Are overhead equipment, distribution systems, ceiling tiles and lighting, and masonry block walls not likely to collapse onto the equipment? Yes
9. Do attached lines have adequate flexibility to avoid damage? Yes
10. Based on the above seismic interaction evaluations, is equipment free of potentially adverse seismic interaction effects? Yes

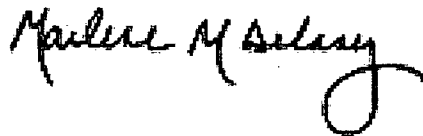
Other Adverse Conditions

11. Have you looked for and found no adverse seismic conditions that could adversely affect the safety functions of the equipment? Yes

Comments

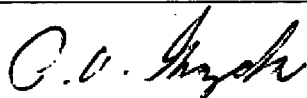
Seismic walkdown performed week of 7/16/12 by M. Delaney & P. Gazda

Evaluated by:



Marlene Delaney

Date: 10/1/2012



Philip Gazda

10/1/2012

Status: Y N U

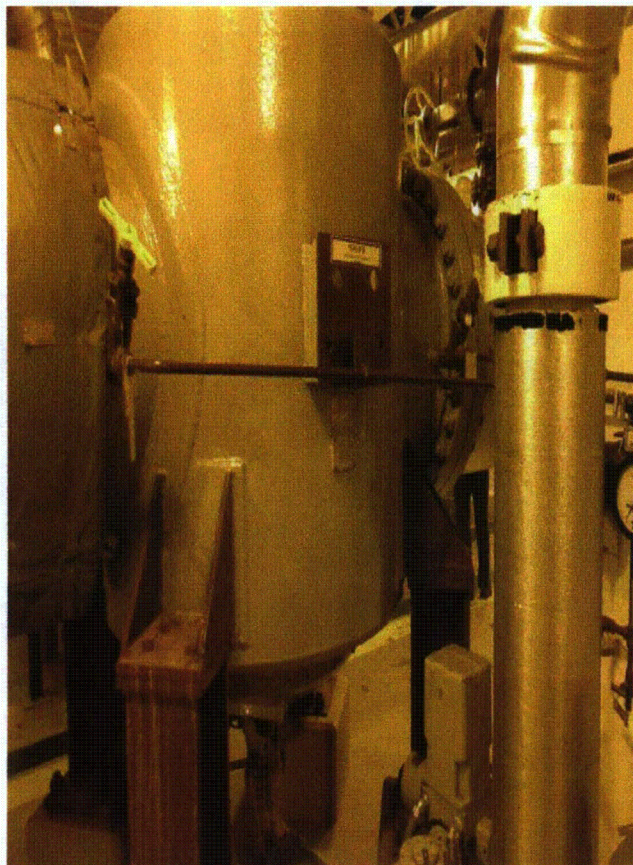
Seismic Walkdown Checklist (SWC)

Equipment ID No.: 1SX01FB

Equipment Class: (0) Other

Equipment Description: 1B SX PP DSCH STRN

Photos



1SX01FB 7-18-12 032