

Status: Y N U

Seismic Walkdown Checklist (SWC)

Equipment ID No.: 1CV02SB

Equipment Class: (21) Tanks and Heat Exchangers

Equipment Description: 1B CENTRIFUGAL CHARGING PUMP GEAR COOLER

Project: Braidwood 1 SWEL

Location (Bldg, Elev, Room/Area): Auxiliary, 364.00 ft, ALL

Manufacturer/Model:

Instructions for Completing Checklist

This checklist may be used to document the results of the Seismic Walkdown of an item of equipment on the SWEL. The space below each of the following questions may be used to record the results of judgments and findings. Additional space is provided at the end of this checklist for documenting other comments.

Anchorage

1. Is anchorage configuration verification required (i.e., is the item one of the 50% of SWEL items requiring such verification)? No
anchored to skid

2. Is the anchorage free of bent, broken, missing or loose hardware? Not Applicable

3. Is the anchorage free of corrosion that is more than mild surface oxidation? Not Applicable

4. Is the anchorage free of visible cracks in the concrete near the anchors? Not Applicable

5. Is the anchorage configuration consistent with plant documentation? (Note: This question only applies if the item is one of the 50% for which an anchorage configuration verification is required.) Not Applicable

6. Based on the above anchorage evaluations, is the anchorage free of potentially adverse seismic conditions? Yes
*Detail for skid mounting shown on Drawing 5-162-06-018-003 Revision 4.
Well-secured to skid.*

Status: Y N U

Seismic Walkdown Checklist (SWC)

Equipment ID No.: 1CV02SB

Equipment Class: (21) Tanks and Heat Exchangers

Equipment Description: 1B CENTRIFUGAL CHARGING PUMP GEAR COOLER

Interaction Effects

7. Are soft targets free from impact by nearby equipment or structures? Yes
8. Are overhead equipment, distribution systems, ceiling tiles and lighting, and masonry block walls not likely to collapse onto the equipment? Yes
9. Do attached lines have adequate flexibility to avoid damage? Yes
10. Based on the above seismic interaction evaluations, is equipment free of potentially adverse seismic interaction effects? Yes

Other Adverse Conditions

11. Have you looked for and found no adverse seismic conditions that could adversely affect the safety functions of the equipment? Yes

Comments

Seismic walkdown performed week of 7/16/12 by M. Delaney & P. Gazda

Evaluated by:

Marlene M Delaney

Marlene Delaney

Date: 10/1/2012

P. O. Gazda

Philip Gazda

10/1/2012

Status: Y N U

Seismic Walkdown Checklist (SWC)

Equipment ID No.: 1CV02SB

Equipment Class: (21) Tanks and Heat Exchangers

Equipment Description: 1B CENTRIFUGAL CHARGING PUMP GEAR COOLER

Photos



1CV02SB 7-19-12 022



1CV02SB 7-19-12 023

Status: Y N U

Seismic Walkdown Checklist (SWC)

Equipment ID No.: 1CV112D

Equipment Class: (8) Motor-Operated and Solenoid-Operated Valves

Equipment Description: RWST TO CHG PMPS SUCT VLV (C/S AT 1PM05J) ASMBLY; 8"

Project: Braidwood 1 SWEL

Location (Bldg, Elev, Room/Area): Auxiliary, 364.00 ft, ALL

Manufacturer/Model:

Instructions for Completing Checklist

This checklist may be used to document the results of the Seismic Walkdown of an item of equipment on the SWEL. The space below each of the following questions may be used to record the results of judgments and findings. Additional space is provided at the end of this checklist for documenting other comments.

Anchorage

1. Is anchorage configuration verification required (i.e., is the item one of the 50% of SWEL items requiring such verification)? No

2. Is the anchorage free of bent, broken, missing or loose hardware? Not Applicable

3. Is the anchorage free of corrosion that is more than mild surface oxidation? Not Applicable

4. Is the anchorage free of visible cracks in the concrete near the anchors? Not Applicable

5. Is the anchorage configuration consistent with plant documentation? (Note: This question only applies if the item is one of the 50% for which an anchorage configuration verification is required.) Not Applicable

6. Based on the above anchorage evaluations, is the anchorage free of potentially adverse seismic conditions? Yes

Status: Y N U

Seismic Walkdown Checklist (SWC)

Equipment ID No.: 1CV112D

Equipment Class: (8) Motor-Operated and Solenoid-Operated Valves

Equipment Description: RWST TO CHG PMPS SUCT VLV (C/S AT 1PM05J) ASMBLY; 8"

Interaction Effects

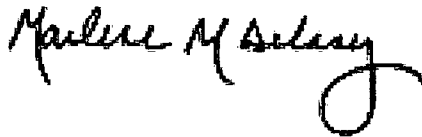
7. Are soft targets free from impact by nearby equipment or structures? Yes
8. Are overhead equipment, distribution systems, ceiling tiles and lighting, and masonry block walls not likely to collapse onto the equipment? Yes
All overhead components are well-supported
9. Do attached lines have adequate flexibility to avoid damage? Yes
10. Based on the above seismic interaction evaluations, is equipment free of potentially adverse seismic interaction effects? Yes

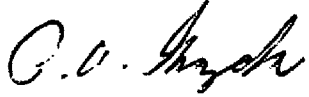
Other Adverse Conditions

11. Have you looked for and found no adverse seismic conditions that could adversely affect the safety functions of the equipment? Yes
Visual from floor.

Comments

Seismic walkdown performed week of 7/16/12 by M. Delaney & P. Gazda

Evaluated by:  Marlene Delaney Date: 10/1/2012

 Philip Gazda 10/1/2012

Status: Y N U

Seismic Walkdown Checklist (SWC)

Equipment ID No.: 1CV112D

Equipment Class: (8) Motor-Operated and Solenoid-Operated Valves

Equipment Description: RWST TO CHG PMPS SUCT VLV (C/S AT 1PM05J) ASMBLY; 8"

Photos



1CV112D 7-19-12 038

Status: Y N U

Seismic Walkdown Checklist (SWC)

Equipment ID No.: 1CV112E

Equipment Class: (8) Motor-Operated and Solenoid-Operated Valves

Equipment Description: RWST TO CHG PMPS SUCT VLV (C/S AT 1PM05J) ASMBLY; 8"

Project: Braidwood 1 SWEL

Location (Bldg, Elev, Room/Area): Auxiliary, 364.00 ft, ALL

Manufacturer/Model:

Instructions for Completing Checklist

This checklist may be used to document the results of the Seismic Walkdown of an item of equipment on the SWEL. The space below each of the following questions may be used to record the results of judgments and findings. Additional space is provided at the end of this checklist for documenting other comments.

Anchorage

1. Is anchorage configuration verification required (i.e., is the item one of the 50% of SWEL items requiring such verification)? No

2. Is the anchorage free of bent, broken, missing or loose hardware? Not Applicable

3. Is the anchorage free of corrosion that is more than mild surface oxidation? Not Applicable

4. Is the anchorage free of visible cracks in the concrete near the anchors? Not Applicable

5. Is the anchorage configuration consistent with plant documentation? (Note: This question only applies if the item is one of the 50% for which an anchorage configuration verification is required.) Not Applicable

6. Based on the above anchorage evaluations, is the anchorage free of potentially adverse seismic conditions? Yes

Status: Y N U

Seismic Walkdown Checklist (SWC)

Equipment ID No.: 1CV112E

Equipment Class: (8) Motor-Operated and Solenoid-Operated Valves

Equipment Description: RWST TO CHG PMPS SUCT VLV (C/S AT 1PM05J) ASMBLY; 8"

Interaction Effects

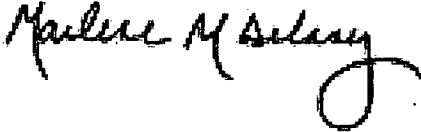
7. Are soft targets free from impact by nearby equipment or structures? Yes
8. Are overhead equipment, distribution systems, ceiling tiles and lighting, and masonry block walls not likely to collapse onto the equipment? Yes
9. Do attached lines have adequate flexibility to avoid damage? Yes
10. Based on the above seismic interaction evaluations, is equipment free of potentially adverse seismic interaction effects? Yes

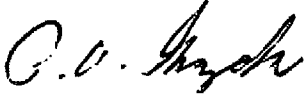
Other Adverse Conditions

11. Have you looked for and found no adverse seismic conditions that could adversely affect the safety functions of the equipment? Yes
Visual observation from floor. View is obstructed.

Comments

Seismic walkdown performed week of 7/16/12 by M. Delaney & P. Gazda

Evaluated by:  Marlene Delaney Date: 10/1/2012

 Philip Gazda 10/1/2012

Status: Y N U

Seismic Walkdown Checklist (SWC)

Equipment ID No.: 1CV112E

Equipment Class: (8) Motor-Operated and Solenoid-Operated Valves

Equipment Description: RWST TO CHG PMPS SUCT VLV (C/S AT 1PM05J) ASMBLY; 8"

Photos

None.

Status: Y N U

Seismic Walkdown Checklist (SWC)

Equipment ID No.: 1CV8355A

Equipment Class: (8) Motor-Operated and Solenoid-Operated Valves

Equipment Description: RCP 1A SEAL INJECTION ISOL VLV (C/S AT 1PM05J) ASMBLY; 2"

Project: Braidwood 1 SWEL

Location (Bldg, Elev, Room/Area): Auxiliary, 401.00 ft, ALL

Manufacturer/Model:

Instructions for Completing Checklist

This checklist may be used to document the results of the Seismic Walkdown of an item of equipment on the SWEL. The space below each of the following questions may be used to record the results of judgments and findings. Additional space is provided at the end of this checklist for documenting other comments.

Anchorage

1. Is anchorage configuration verification required (i.e., is the item one of the 50% of SWEL items requiring such verification)? No

2. Is the anchorage free of bent, broken, missing or loose hardware? Not Applicable

3. Is the anchorage free of corrosion that is more than mild surface oxidation? Not Applicable

4. Is the anchorage free of visible cracks in the concrete near the anchors? Not Applicable

5. Is the anchorage configuration consistent with plant documentation? (Note: This question only applies if the item is one of the 50% for which an anchorage configuration verification is required.) Not Applicable

6. Based on the above anchorage evaluations, is the anchorage free of potentially adverse seismic conditions? Yes

Status: Y N U

Seismic Walkdown Checklist (SWC)

Equipment ID No.: 1CV8355A

Equipment Class: (8) Motor-Operated and Solenoid-Operated Valves

Equipment Description: RCP 1A SEAL INJECTION ISOL VLV (C/S AT 1PM05J) ASMBLY; 2"

Interaction Effects

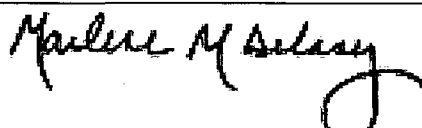
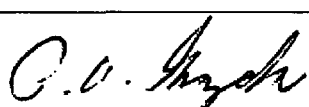
- | | |
|---|-----|
| 7. Are soft targets free from impact by nearby equipment or structures? | Yes |
| 8. Are overhead equipment, distribution systems, ceiling tiles and lighting, and masonry block walls not likely to collapse onto the equipment? | Yes |
| 9. Do attached lines have adequate flexibility to avoid damage? | Yes |
| 10. Based on the above seismic interaction evaluations, is equipment free of potentially adverse seismic interaction effects? | Yes |

Other Adverse Conditions

- | | |
|--|-----|
| 11. Have you looked for and found no adverse seismic conditions that could adversely affect the safety functions of the equipment?
<i>Piping is well-supported. Rugged valve.</i> | Yes |
|--|-----|

Comments

Seismic walkdown performed week of 7/16/12 by M. Delaney & P. Gazda

Evaluated by:		Marlene Delaney	Date:	10/1/2012
		Philip Gazda		10/1/2012

Status: Y N U

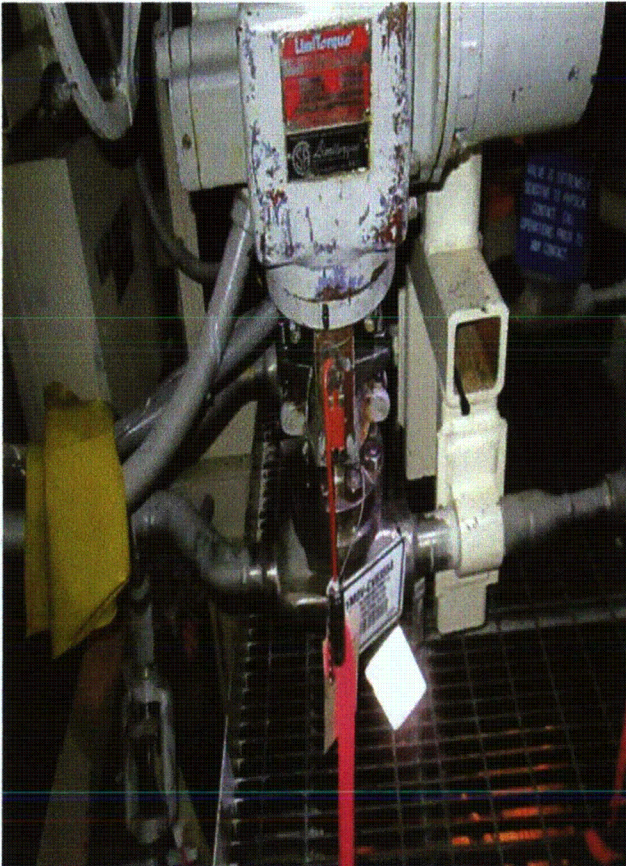
Seismic Walkdown Checklist (SWC)

Equipment ID No.: 1CV8355A

Equipment Class: (8) Motor-Operated and Solenoid-Operated Valves

Equipment Description: RCP 1A SEAL INJECTION ISOL VLV (C/S AT 1PM05J) ASMBLY; 2"

Photos



1CV8355A 7-19-12 Group 2 002

Status: Y N U

Seismic Walkdown Checklist (SWC)

Equipment ID No.: 1DC01E

Equipment Class: (15) Batteries on Racks

Equipment Description: 125V BATTERY 111 DIV. 11

Project: Braidwood 1 SWEL

Location (Bldg, Elev, Room/Area): Auxiliary, 451.00 ft, ALL

Manufacturer/Model:

Instructions for Completing Checklist

This checklist may be used to document the results of the Seismic Walkdown of an item of equipment on the SWEL. The space below each of the following questions may be used to record the results of judgments and findings. Additional space is provided at the end of this checklist for documenting other comments.

Anchorage

1. Is anchorage configuration verification required (i.e., is the item one of the 50% of SWEL items requiring such verification)? Yes

2. Is the anchorage free of bent, broken, missing or loose hardware? Yes

3. Is the anchorage free of corrosion that is more than mild surface oxidation? Yes

4. Is the anchorage free of visible cracks in the concrete near the anchors? Yes

5. Is the anchorage configuration consistent with plant documentation? (Note: This question only applies if the item is one of the 50% for which an anchorage configuration verification is required.) Yes
Drawing 20E-0-3391BE Revision C Detail 19172

6. Based on the above anchorage evaluations, is the anchorage free of potentially adverse seismic conditions? Yes

Status: Y N U

Seismic Walkdown Checklist (SWC)

Equipment ID No.: 1DC01E

Equipment Class: (15) Batteries on Racks

Equipment Description: 125V BATTERY 111 DIV. 11

Interaction Effects

7. Are soft targets free from impact by nearby equipment or structures? Yes
8. Are overhead equipment, distribution systems, ceiling tiles and lighting, and masonry block walls not likely to collapse onto the equipment? Yes
Seismic block walls, overhead lights have closed S-hooks and bulb guards. Subsequent to initial walkdown, NRC identified open S-hooks in this room. IR 1395981 was written. Unlikely that lights would fall on equipment since the S-hooks are not completely open and not all S-hooks for a light are open.
9. Do attached lines have adequate flexibility to avoid damage? Yes
10. Based on the above seismic interaction evaluations, is equipment free of potentially adverse seismic interaction effects? Yes

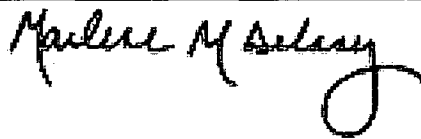
Other Adverse Conditions

11. Have you looked for and found no adverse seismic conditions that could adversely affect the safety functions of the equipment? Yes

Comments

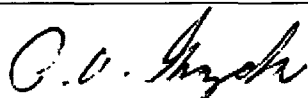
Seismic walkdown performed week of 7/16/12 by M. Delaney & P. Gazda

Evaluated by:



Marlene Delaney

Date: 10/1/2012



Philip Gazda

10/1/2012

Status: Y N U

Seismic Walkdown Checklist (SWC)

Equipment ID No.: 1DC01E

Equipment Class: (15) Batteries on Racks

Equipment Description: 125V BATTERY 111 DIV. 11

Photos



1DC01E 7-16-12 040



1DC01E 7-16-12 041

Status: Y N U

Seismic Walkdown Checklist (SWC)

Equipment ID No.: 1DC01E

Equipment Class: (15) Batteries on Racks

Equipment Description: 125V BATTERY 111 DIV. 11



1DC01E 7-16-12 042

Status: Y N U

Seismic Walkdown Checklist (SWC)

Equipment ID No.: 1DC02E

Equipment Class: (15) Batteries on Racks

Equipment Description: 125V BATTERY 112 DIV. 12

Project: Braidwood 1 SWEL

Location (Bldg, Elev, Room/Area): Auxiliary, 451.00 ft, ALL

Manufacturer/Model:

Instructions for Completing Checklist

This checklist may be used to document the results of the Seismic Walkdown of an item of equipment on the SWEL. The space below each of the following questions may be used to record the results of judgments and findings. Additional space is provided at the end of this checklist for documenting other comments.

Anchorage

1. Is anchorage configuration verification required (i.e., is the item one of the 50% of SWEL items requiring such verification)? Yes

2. Is the anchorage free of bent, broken, missing or loose hardware? Yes

3. Is the anchorage free of corrosion that is more than mild surface oxidation? Yes

4. Is the anchorage free of visible cracks in the concrete near the anchors? Yes

5. Is the anchorage configuration consistent with plant documentation? (Note: This question only applies if the item is one of the 50% for which an anchorage configuration verification is required.) Yes
*Drawing 20E-0-3391BE Revision C Detail 19172.
Bolt with excessive projection however noted on Drawing 20E-0-3391BE so acceptable.*

6. Based on the above anchorage evaluations, is the anchorage free of potentially adverse seismic conditions? Yes

Status: Y N U

Seismic Walkdown Checklist (SWC)

Equipment ID No.: 1DC02E

Equipment Class: (15) Batteries on Racks

Equipment Description: 125V BATTERY 112 DIV. 12

Interaction Effects

7. Are soft targets free from impact by nearby equipment or structures? Yes
8. Are overhead equipment, distribution systems, ceiling tiles and lighting, and masonry block walls not likely to collapse onto the equipment? Yes
Overhead lights on chains with closed S-hooks (base not always visible). Subsequent it was noted that one top S-hook is open on one light. IR 1395992 was written. Unlikely that lights would fall and damage equipment since the S-hook is not completely open and not all S-hooks on light are open. Light bulbs have guards. Seismic block walls
9. Do attached lines have adequate flexibility to avoid damage? Yes
10. Based on the above seismic interaction evaluations, is equipment free of potentially adverse seismic interaction effects? Yes

Other Adverse Conditions

11. Have you looked for and found no adverse seismic conditions that could adversely affect the safety functions of the equipment? Yes

Comments

Seismic walkdown performed week of 7/16/12 by M. Delaney & P. Gazda

Status: Y N U

Seismic Walkdown Checklist (SWC)

Equipment ID No.: 1DC02E

Equipment Class: (15) Batteries on Racks

Equipment Description: 125V BATTERY 112 DIV. 12

Marlene M Delaney

Evaluated by:

Marlene Delaney

Date: 10/1/2012

P.O. Gazda

Philip Gazda

10/1/2012

Photos



1DC02E 7-16-12 061



1DC02E 7-16-12 062

Status: Y N U

Seismic Walkdown Checklist (SWC)

Equipment ID No.: 1DC04E

Equipment Class: (16) Battery Chargers and Inverters

Equipment Description: BATTERY CHARGER 112 DIV. 12

Project: Braidwood 1 SWEL

Location (Bldg, Elev, Room/Area): Auxiliary, 451.00 ft, ALL

Manufacturer/Model:

Instructions for Completing Checklist

This checklist may be used to document the results of the Seismic Walkdown of an item of equipment on the SWEL. The space below each of the following questions may be used to record the results of judgments and findings. Additional space is provided at the end of this checklist for documenting other comments.

Anchorage

1. Is anchorage configuration verification required (i.e., is the item one of the 50% of SWEL items requiring such verification)? Yes

2. Is the anchorage free of bent, broken, missing or loose hardware? Yes

3. Is the anchorage free of corrosion that is more than mild surface oxidation? Yes

4. Is the anchorage free of visible cracks in the concrete near the anchors? Yes

5. Is the anchorage configuration consistent with plant documentation? (Note: This question only applies if the item is one of the 50% for which an anchorage configuration verification is required.) Yes
Drawing 20E-0-3391N Revision AH Detail 8745

6. Based on the above anchorage evaluations, is the anchorage free of potentially adverse seismic conditions? Yes

Status: Y N U

Seismic Walkdown Checklist (SWC)

Equipment ID No.: 1DC04E

Equipment Class: (16) Battery Chargers and Inverters

Equipment Description: BATTERY CHARGER 112 DIV. 12

Interaction Effects

7. Are soft targets free from impact by nearby equipment or structures? Yes
8. Are overhead equipment, distribution systems, ceiling tiles and lighting, and masonry block walls not likely to collapse onto the equipment? Yes
Seismic block wall
9. Do attached lines have adequate flexibility to avoid damage? Yes
10. Based on the above seismic interaction evaluations, is equipment free of potentially adverse seismic interaction effects? Yes

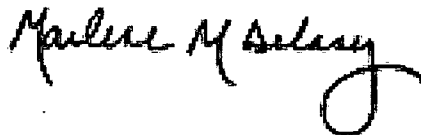
Other Adverse Conditions

11. Have you looked for and found no adverse seismic conditions that could adversely affect the safety functions of the equipment? Yes
See AWC 8 for discussion on small crack in wall near equipment.

Comments

Seismic walkdown performed week of 7/16/12 by M. Delaney & P. Gazda

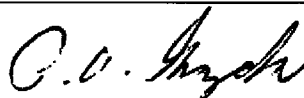
Evaluated by:



Marlene Delaney

Date: 10/1/2012

Evaluated by:



Philip Gazda

10/1/2012

Status: Y N U

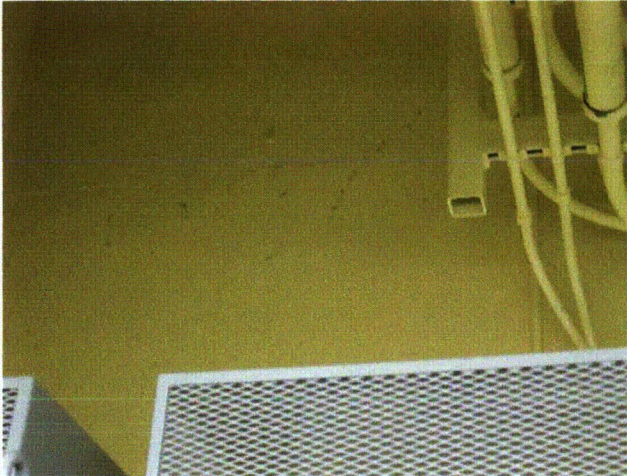
Seismic Walkdown Checklist (SWC)

Equipment ID No.: 1DC04E

Equipment Class: (16) Battery Chargers and Inverters

Equipment Description: BATTERY CHARGER 112 DIV. 12

Photos



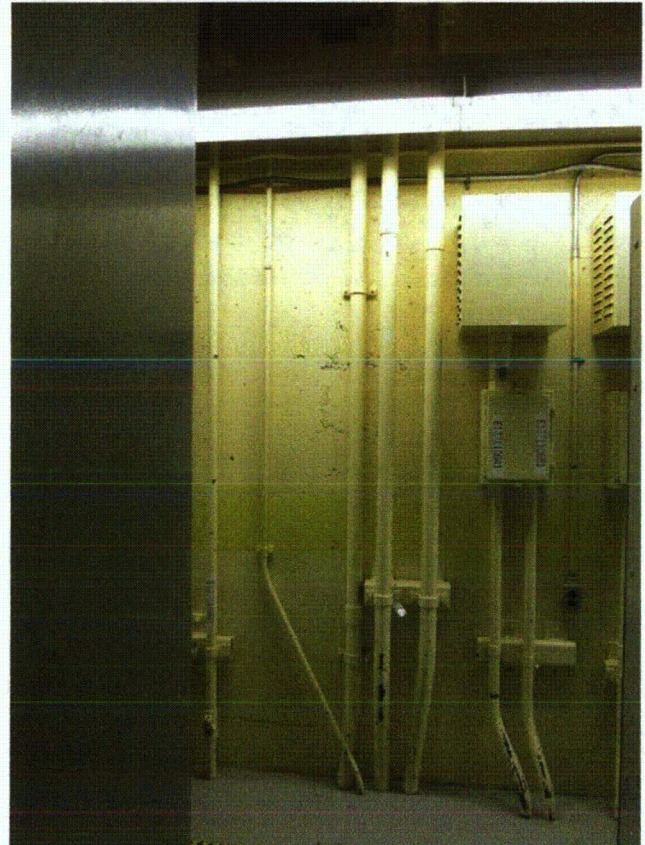
1DC04E (NP 6695 crack) 7-16-12 063



1DC04E 7-16-12 059



1DC04E 7-16-12 060



1DC04E 7-16-12 064

Status: Y N U

Seismic Walkdown Checklist (SWC)

Equipment ID No.: 1DC04E

Equipment Class: (16) Battery Chargers and Inverters

Equipment Description: BATTERY CHARGER 112 DIV. 12



1DC04E 7-16-12 065

Status: Y N U

Seismic Walkdown Checklist (SWC)

Equipment ID No.: 1DC06E

Equipment Class: (14) Distribution Panels

Equipment Description: 125V DC ESF DIST CENTER 112

Project: Braidwood 1 SWEL

Location (Bldg, Elev, Room/Area): Auxiliary, 451.00 ft, ALL

Manufacturer/Model:

Instructions for Completing Checklist

This checklist may be used to document the results of the Seismic Walkdown of an item of equipment on the SWEL. The space below each of the following questions may be used to record the results of judgments and findings. Additional space is provided at the end of this checklist for documenting other comments.

Anchorage

1. Is anchorage configuration verification required (i.e., is the item one of the 50% of SWEL items requiring such verification)? Yes

2. Is the anchorage free of bent, broken, missing or loose hardware? Yes

3. Is the anchorage free of corrosion that is more than mild surface oxidation? Yes

4. Is the anchorage free of visible cracks in the concrete near the anchors? Yes

5. Is the anchorage configuration consistent with plant documentation? (Note: This question only applies if the item is one of the 50% for which an anchorage configuration verification is required.) Yes
Drawing 20E-0-3391C Rev BM specifies 1 1/2" @ 12, actual weld exceeds drawing requirements

6. Based on the above anchorage evaluations, is the anchorage free of potentially adverse seismic conditions? Yes

Status: Y N U

Seismic Walkdown Checklist (SWC)

Equipment ID No.: 1DC06E

Equipment Class: (14) Distribution Panels

Equipment Description: 125V DC ESF DIST CENTER 112

Interaction Effects

7. Are soft targets free from impact by nearby equipment or structures? Yes
8. Are overhead equipment, distribution systems, ceiling tiles and lighting, and masonry block walls not likely to collapse onto the equipment? Yes
No bulb guards on lights but if the lights fell they would not damage equipment. S&L Standard EE-103 does not require guards on fluorescent fixtures.
9. Do attached lines have adequate flexibility to avoid damage? Yes
10. Based on the above seismic interaction evaluations, is equipment free of potentially adverse seismic interaction effects? Yes

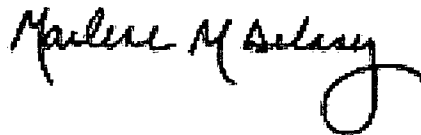
Other Adverse Conditions

11. Have you looked for and found no adverse seismic conditions that could adversely affect the safety functions of the equipment? Yes

Comments

Seismic walkdown performed week of 7/16/12 by M. Delaney & P. Gazda

Evaluated by:



Marlene Delaney

Date: 10/1/2012



Philip Gazda

10/1/2012

Status: Y N U

Seismic Walkdown Checklist (SWC)

Equipment ID No.: 1DC06E

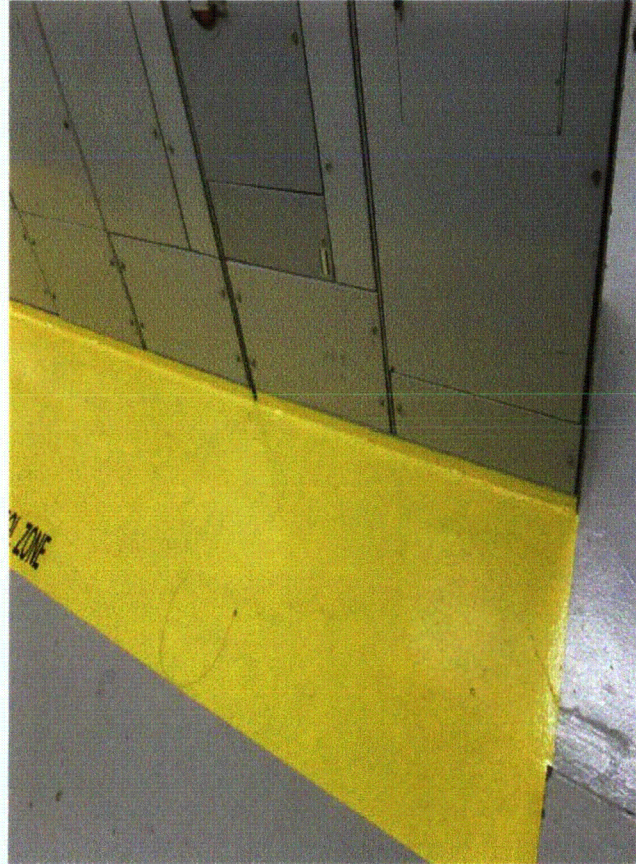
Equipment Class: (14) Distribution Panels

Equipment Description: 125V DC ESF DIST CENTER 112

Photos



1DC06E 7-16-12 050



1DC06E 7-16-12 051

Status: Y N U

Seismic Walkdown Checklist (SWC)

Equipment ID No.: 1DC06E

Equipment Class: (14) Distribution Panels

Equipment Description: 125V DC ESF DIST CENTER 112



1DC06E 7-16-12 052

Status: Y N U

Seismic Walkdown Checklist (SWC)

Equipment ID No.: 1DC10J

Equipment Class: (14) Distribution Panels

Equipment Description: 125V DC FUSE PANEL - DIV. 11

Project: Braidwood 1 SWEL

Location (Bldg, Elev, Room/Area): Auxiliary, 451.00 ft, ALL

Manufacturer/Model:

Instructions for Completing Checklist

This checklist may be used to document the results of the Seismic Walkdown of an item of equipment on the SWEL. The space below each of the following questions may be used to record the results of judgments and findings. Additional space is provided at the end of this checklist for documenting other comments.

Anchorage

1. Is anchorage configuration verification required (i.e., is the item one of the 50% of SWEL items requiring such verification)? Yes

2. Is the anchorage free of bent, broken, missing or loose hardware? Yes

3. Is the anchorage free of corrosion that is more than mild surface oxidation? Yes

4. Is the anchorage free of visible cracks in the concrete near the anchors? Yes

5. Is the anchorage configuration consistent with plant documentation? (Note: This question only applies if the item is one of the 50% for which an anchorage configuration verification is required.)
Drawing 20E-0-3391AH Rev AV Detail 10030 Yes

6. Based on the above anchorage evaluations, is the anchorage free of potentially adverse seismic conditions? Yes

Status: Y N U

Seismic Walkdown Checklist (SWC)

Equipment ID No.: 1DC10J

Equipment Class: (14) Distribution Panels

Equipment Description: 125V DC FUSE PANEL - DIV. 11

Interaction Effects

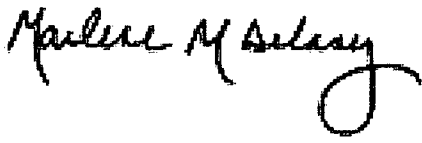
7. Are soft targets free from impact by nearby equipment or structures? Yes
8. Are overhead equipment, distribution systems, ceiling tiles and lighting, and masonry block walls not likely to collapse onto the equipment?
overhead lighting is adequate Yes
9. Do attached lines have adequate flexibility to avoid damage? Yes
10. Based on the above seismic interaction evaluations, is equipment free of potentially adverse seismic interaction effects? Yes

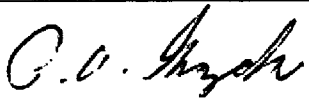
Other Adverse Conditions

11. Have you looked for and found no adverse seismic conditions that could adversely affect the safety functions of the equipment? Yes

Comments

Seismic walkdown performed week of 7/16/12 by M. Delaney & P. Gazda

Evaluated by:  Marlene Delaney Date: 10/1/2012

 Philip Gazda 10/1/2012

Status: Y N U

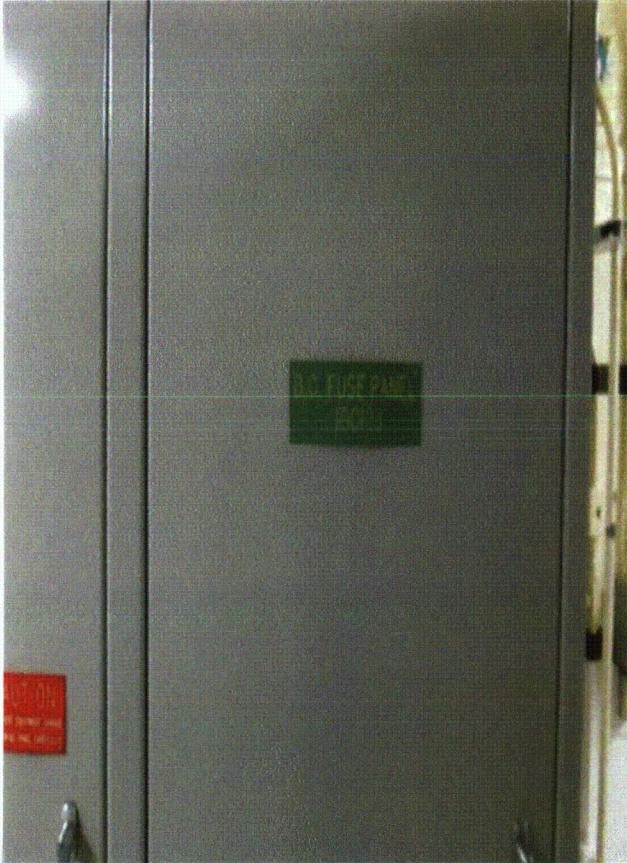
Seismic Walkdown Checklist (SWC)

Equipment ID No.: 1DC10J

Equipment Class: (14) Distribution Panels

Equipment Description: 125V DC FUSE PANEL - DIV. 11

Photos



1DC10J 7-16-12 043



1DC10J 7-16-12 044

Status: Y N U

Seismic Walkdown Checklist (SWC)

Equipment ID No.: 1DC11J

Equipment Class: (14) Distribution Panels

Equipment Description: 125V DC FUSE PANEL - DIV. 12

Project: Braidwood 1 SWEL

Location (Bldg, Elev, Room/Area): Auxiliary, 451.00 ft, ALL

Manufacturer/Model:

Instructions for Completing Checklist

This checklist may be used to document the results of the Seismic Walkdown of an item of equipment on the SWEL. The space below each of the following questions may be used to record the results of judgments and findings. Additional space is provided at the end of this checklist for documenting other comments.

Anchorage

1. Is anchorage configuration verification required (i.e., is the item one of the 50% of SWEL items requiring such verification)? Yes

2. Is the anchorage free of bent, broken, missing or loose hardware? Yes

3. Is the anchorage free of corrosion that is more than mild surface oxidation? Yes

4. Is the anchorage free of visible cracks in the concrete near the anchors? Yes

5. Is the anchorage configuration consistent with plant documentation? (Note: This question only applies if the item is one of the 50% for which an anchorage configuration verification is required.) Yes
Drawing 20E-0-3391K Rev AF

6. Based on the above anchorage evaluations, is the anchorage free of potentially adverse seismic conditions? Yes

Status: Y N U

Seismic Walkdown Checklist (SWC)

Equipment ID No.: 1DC11J

Equipment Class: (14) Distribution Panels

Equipment Description: 125V DC FUSE PANEL - DIV. 12

Interaction Effects

7. Are soft targets free from impact by nearby equipment or structures? Yes
8. Are overhead equipment, distribution systems, ceiling tiles and lighting, and masonry block walls not likely to collapse onto the equipment? Yes
9. Do attached lines have adequate flexibility to avoid damage? Yes
10. Based on the above seismic interaction evaluations, is equipment free of potentially adverse seismic interaction effects? Yes

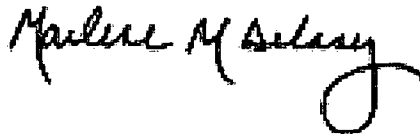
Other Adverse Conditions

11. Have you looked for and found no adverse seismic conditions that could adversely affect the safety functions of the equipment? Yes

Comments

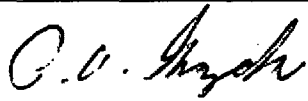
Seismic walkdown performed week of 7/16/12 by M. Delaney & P. Gazda

Evaluated by:



Marlene Delaney

Date: 10/1/2012



Philip Gazda

10/1/2012

Status: Y N U

Seismic Walkdown Checklist (SWC)

Equipment ID No.: 1DC11J

Equipment Class: (14) Distribution Panels

Equipment Description: 125V DC FUSE PANEL - DIV. 12

Photos



1DC11J 7-16-12 047



1DC11J 7-16-12 048

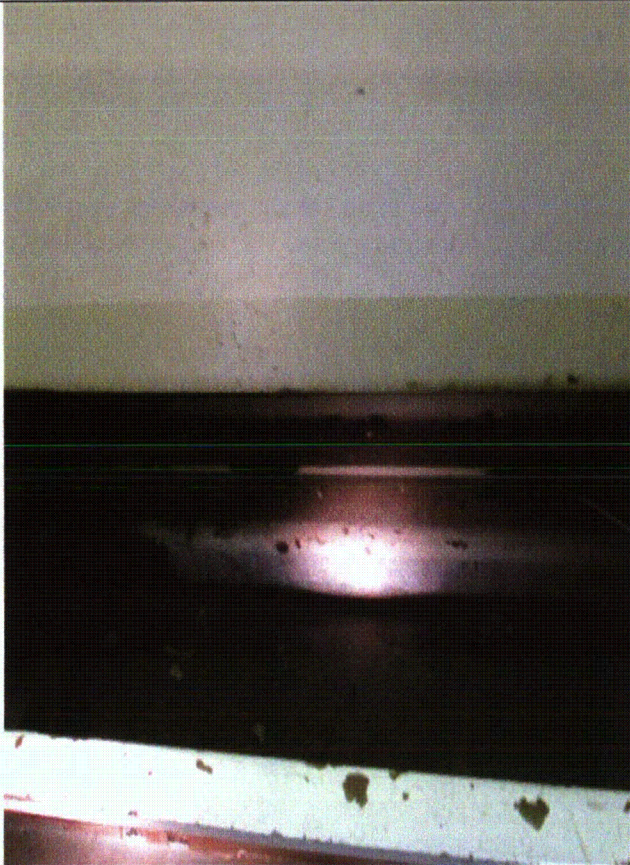
Status: Y N U

Seismic Walkdown Checklist (SWC)

Equipment ID No.: 1DC11J

Equipment Class: (14) Distribution Panels

Equipment Description: 125V DC FUSE PANEL - DIV. 12



1DC11J 7-16-12 049

Status: Y N U

Seismic Walkdown Checklist (SWC)

Equipment ID No.: 1DG01KB

Equipment Class: (17) Engine-Generators

Equipment Description: 1B DIESEL GENERATOR

Project: Braidwood 1 SWEL

Location (Bldg, Elev, Room/Area): Auxiliary, 401.00 ft, ALL

Manufacturer/Model:

Instructions for Completing Checklist

This checklist may be used to document the results of the Seismic Walkdown of an item of equipment on the SWEL. The space below each of the following questions may be used to record the results of judgments and findings. Additional space is provided at the end of this checklist for documenting other comments.

Anchorage

1. Is anchorage configuration verification required (i.e., is the item one of the 50% of SWEL items requiring such verification)? Yes

2. Is the anchorage free of bent, broken, missing or loose hardware? Yes

3. Is the anchorage free of corrosion that is more than mild surface oxidation? Yes

4. Is the anchorage free of visible cracks in the concrete near the anchors? Yes

5. Is the anchorage configuration consistent with plant documentation? (Note: This question only applies if the item is one of the 50% for which an anchorage configuration verification is required.) Yes
M-1222 Sheet 11 Revision D
See AWC 11 for thread engagement of heat exchanger skid.

6. Based on the above anchorage evaluations, is the anchorage free of potentially adverse seismic conditions? Yes

Status: Y N U

Seismic Walkdown Checklist (SWC)

Equipment ID No.: 1DG01KB

Equipment Class: (17) Engine-Generators

Equipment Description: 1B DIESEL GENERATOR

Interaction Effects

7. Are soft targets free from impact by nearby equipment or structures? Yes
8. Are overhead equipment, distribution systems, ceiling tiles and lighting, and masonry block walls not likely to collapse onto the equipment? Yes
Overhead trolley beam is well-supported.
9. Do attached lines have adequate flexibility to avoid damage? Yes
10. Based on the above seismic interaction evaluations, is equipment free of potentially adverse seismic interaction effects? Yes

Other Adverse Conditions

11. Have you looked for and found no adverse seismic conditions that could adversely affect the safety functions of the equipment? Yes

Comments

Seismic walkdown performed week of 7/16/12 by M. Delaney & P. Gazda

Evaluated by: Marlene M Delaney Marlene Delaney Date: 10/1/2012

P. P. Gazda Philip Gazda 10/1/2012

Status: Y N U

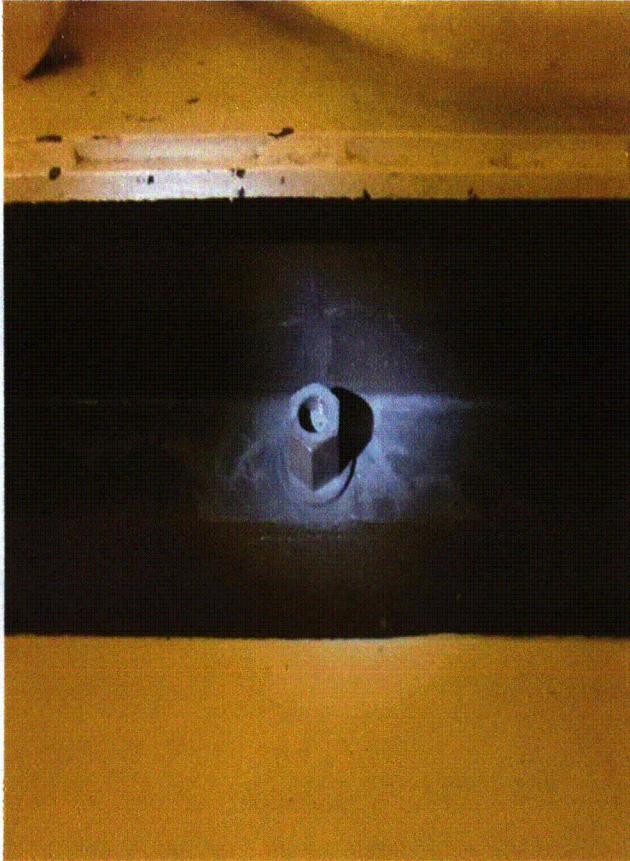
Seismic Walkdown Checklist (SWC)

Equipment ID No.: 1DG01KB

Equipment Class: (17) Engine-Generators

Equipment Description: 1B DIESEL GENERATOR

Photos



1DG01KB (AWB - thread engagement) 7-18-12 050



1DG01KB (AWB - thread engagement) 7-18-12 051

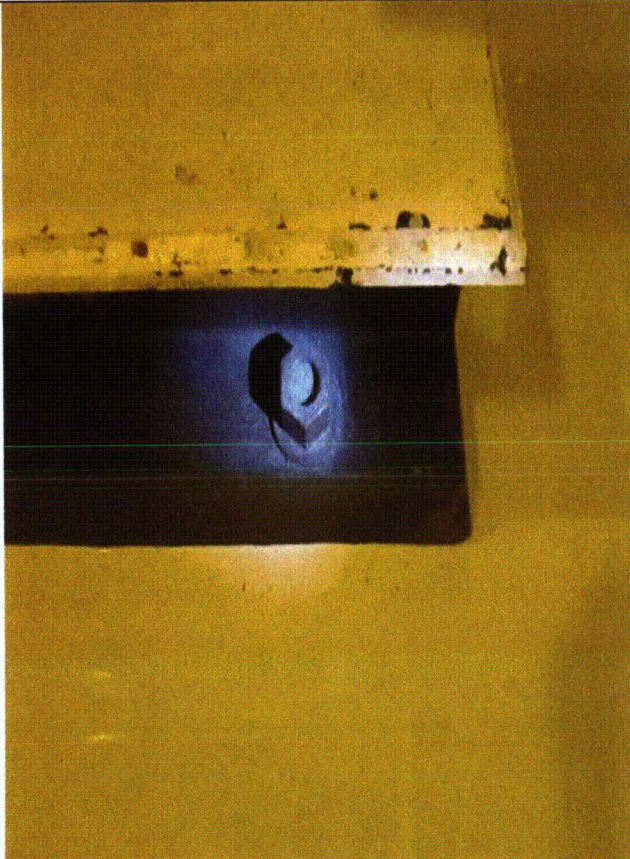
Status: Y N U

Seismic Walkdown Checklist (SWC)

Equipment ID No.: 1DG01KB

Equipment Class: (17) Engine-Generators

Equipment Description: 1B DIESEL GENERATOR



1DG01KB (AWB - thread engagement) 7-18-12 052



1DG01KB (AWB - thread engagement) 7-18-12 053

Status: Y N U

Seismic Walkdown Checklist (SWC)

Equipment ID No.: 1DG01KB

Equipment Class: (17) Engine-Generators

Equipment Description: 1B DIESEL GENERATOR



1DG01KB (AWB - thread engagement) 7-18-12 054



1DG01KB 7-16-12 084

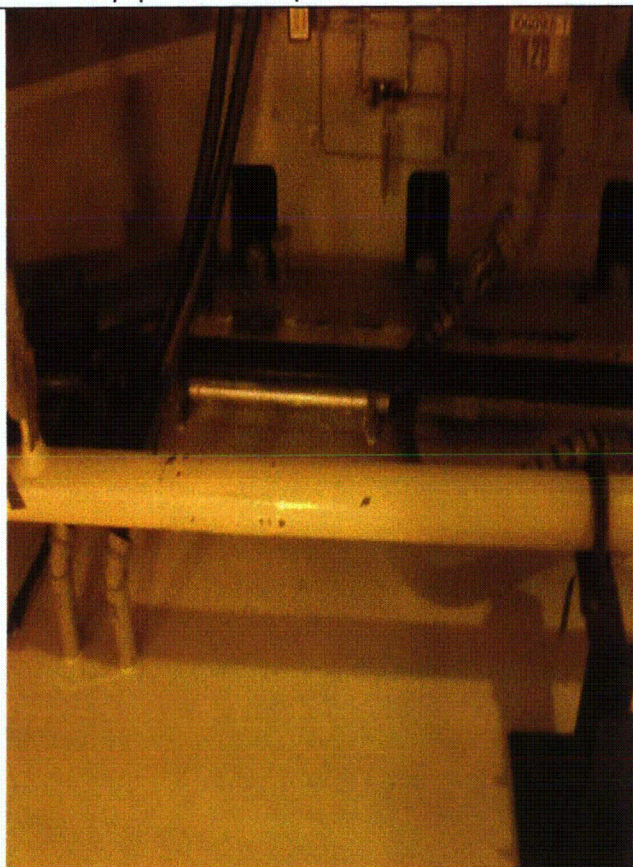
Status: Y N U

Seismic Walkdown Checklist (SWC)

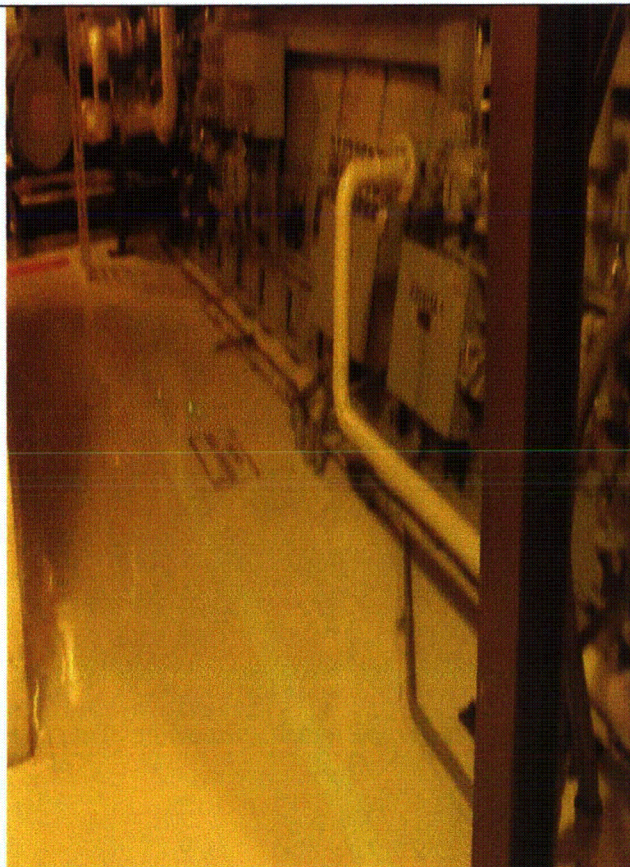
Equipment ID No.: 1DG01KB

Equipment Class: (17) Engine-Generators

Equipment Description: 1B DIESEL GENERATOR



1DG01KB 7-16-12 085



1DG01KB 7-16-12 086

Status: Y N U

Seismic Walkdown Checklist (SWC)

Equipment ID No.: 1DO01TB

Equipment Class: (21) Tanks and Heat Exchangers

Equipment Description: DIESEL OIL STORAGE TANK 1B

Project: Braidwood 1 SWEL

Location (Bldg, Elev, Room/Area): Auxiliary, 373.00 ft, ALL

Manufacturer/Model:

Instructions for Completing Checklist

This checklist may be used to document the results of the Seismic Walkdown of an item of equipment on the SWEL. The space below each of the following questions may be used to record the results of judgments and findings. Additional space is provided at the end of this checklist for documenting other comments.

Anchorage

1. Is anchorage configuration verification required (i.e., is the item one of the 50% of SWEL items requiring such verification)? Yes

2. Is the anchorage free of bent, broken, missing or loose hardware? Yes

3. Is the anchorage free of corrosion that is more than mild surface oxidation? Yes

4. Is the anchorage free of visible cracks in the concrete near the anchors? Yes

5. Is the anchorage configuration consistent with plant documentation? (Note: This question only applies if the item is one of the 50% for which an anchorage configuration verification is required.) Yes

Drawing M-1214 Sheet 3 Revision Z

4 of 12 anchor bolts have hairline cracks in the 1'thick foundation pad that do not extend into the base slab. A review of the design drawings was performed. The tank locations are shown on Drawing M-1216 Sheet 1 Revision W. The anchor bolt locations and details are shown on Drawing M-1214 Sheet 3 Revision Z. The anchor bolts are embedded 1'-3 1/2" in the base slab. The approximate total length of the anchor bolts is 3'-9". The pad is shown on section G-G shows a #6 reinforcing bar outside of the anchor bolt that will provide confinement to the anchor.

Status: Y N U

Seismic Walkdown Checklist (SWC)

Equipment ID No.: 1DO01TB

Equipment Class: (21) Tanks and Heat Exchangers

Equipment Description: DIESEL OIL STORAGE TANK 1B

Since the anchor bolt is founded in the base slab and the pad has reinforcing across the hairline cracks, this cracking is judged to not impact the strength of the anchors. IR 1389743 was written.

6. Based on the above anchorage evaluations, is the anchorage free of potentially adverse seismic conditions? Yes

Interaction Effects

7. Are soft targets free from impact by nearby equipment or structures? Yes
8. Are overhead equipment, distribution systems, ceiling tiles and lighting, and masonry block walls not likely to collapse onto the equipment? Yes
9. Do attached lines have adequate flexibility to avoid damage? Yes
10. Based on the above seismic interaction evaluations, is equipment free of potentially adverse seismic interaction effects? Yes

Other Adverse Conditions

11. Have you looked for and found no adverse seismic conditions that could adversely affect the safety functions of the equipment? Yes

Comments

Seismic walkdown performed week of 7/16/12 by M. Delaney & P. Gazda

Status: Y N U

Seismic Walkdown Checklist (SWC)

Equipment ID No.: 1DO01TB

Equipment Class: (21) Tanks and Heat Exchangers

Equipment Description: DIESEL OIL STORAGE TANK 1B

Marlene M Delaney

Evaluated by:

Marlene Delaney

Date: 10/1/2012

P. O. Gazda

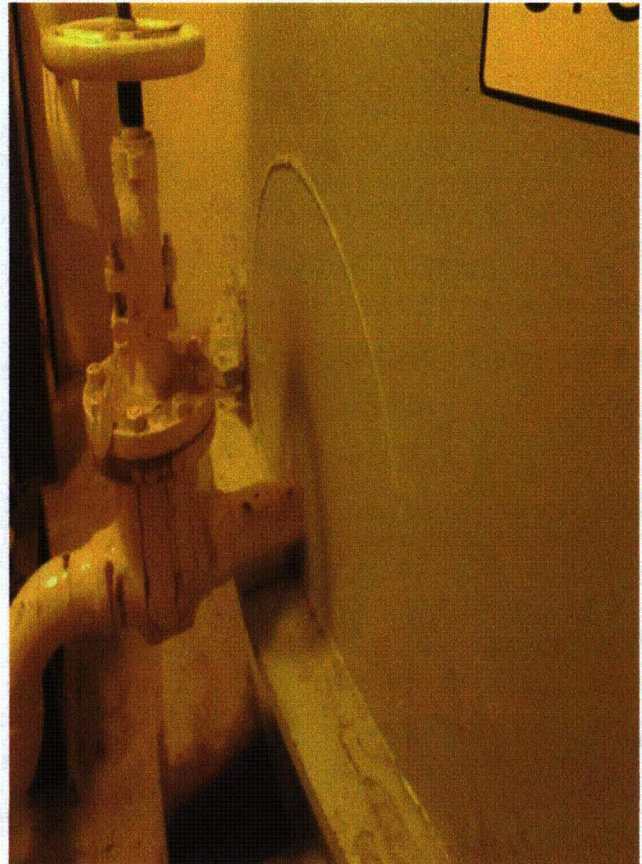
Philip Gazda

10/1/2012

Photos



1DO01TB 7-16-12 091



1DO01TB 7-16-12 092

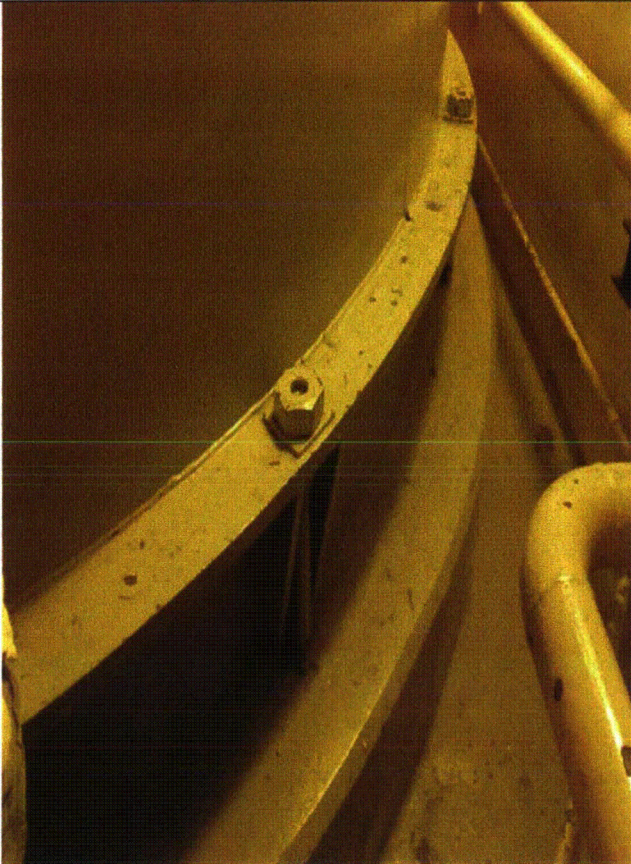
Status: Y N U

Seismic Walkdown Checklist (SWC)

Equipment ID No.: 1DO01TB

Equipment Class: (21) Tanks and Heat Exchangers

Equipment Description: DIESEL OIL STORAGE TANK 1B



1DO01TB 7-16-12 093



1DO01TB 7-16-12 094

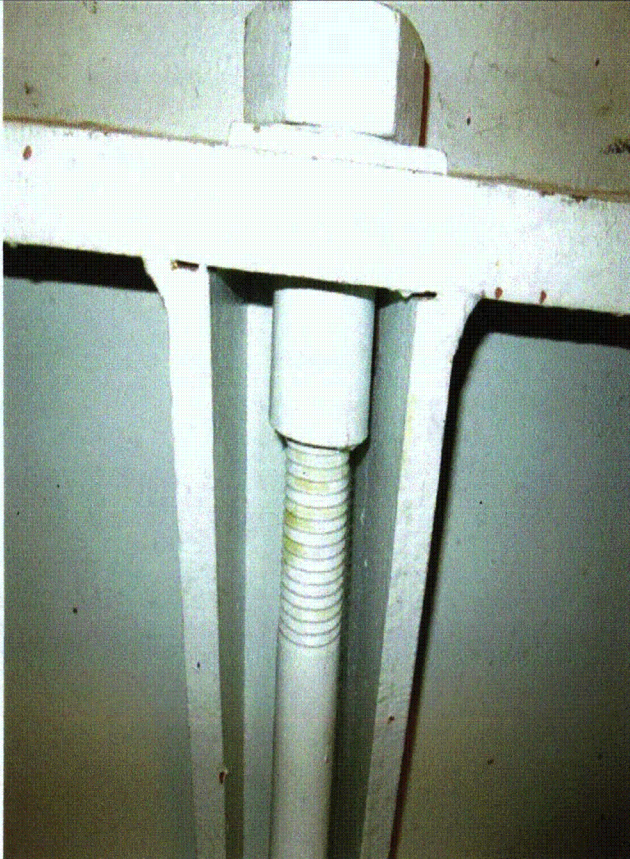
Status: Y N U

Seismic Walkdown Checklist (SWC)

Equipment ID No.: 1DO01TB

Equipment Class: (21) Tanks and Heat Exchangers

Equipment Description: DIESEL OIL STORAGE TANK 1B



1DO01TB 7-16-12 095



1DO01TB 7-17-12 013

Status: Y N U

Seismic Walkdown Checklist (SWC)

Equipment ID No.: 1DO01TB

Equipment Class: (21) Tanks and Heat Exchangers

Equipment Description: DIESEL OIL STORAGE TANK 1B



1DO01TB 7-17-12 014



1DO01TB 7-17-12 015

Status: Y N U

Seismic Walkdown Checklist (SWC)

Equipment ID No.: 1DO01TB

Equipment Class: (21) Tanks and Heat Exchangers

Equipment Description: DIESEL OIL STORAGE TANK 1B



1DO01TB 7-17-12 016



1DO01TB 7-17-12 017

Status: Y N U

Seismic Walkdown Checklist (SWC)

Equipment ID No.: 1DO01TB

Equipment Class: (21) Tanks and Heat Exchangers

Equipment Description: DIESEL OIL STORAGE TANK 1B



1DO01TB 7-17-12 018

Status: Y N U

Seismic Walkdown Checklist (SWC)

Equipment ID No.: 1DO10T

Equipment Class: (21) Tanks and Heat Exchangers

Equipment Description: 500 GAL DIESEL OIL DAY TANK

Project: Braidwood 1 SWEL

Location (Bldg, Elev, Room/Area): Auxiliary, 383.00 ft, ALL

Manufacturer/Model:

Instructions for Completing Checklist

This checklist may be used to document the results of the Seismic Walkdown of an item of equipment on the SWEL. The space below each of the following questions may be used to record the results of judgments and findings. Additional space is provided at the end of this checklist for documenting other comments.

Anchorage

1. Is anchorage configuration verification required (i.e., is the item one of the 50% of SWEL items requiring such verification)? Yes

2. Is the anchorage free of bent, broken, missing or loose hardware? Yes

3. Is the anchorage free of corrosion that is more than mild surface oxidation? Yes

4. Is the anchorage free of visible cracks in the concrete near the anchors? Yes

5. Is the anchorage configuration consistent with plant documentation? (Note: This question only applies if the item is one of the 50% for which an anchorage configuration verification is required.) Yes
Drawing M-1220 Sheet 5 Revision Y

6. Based on the above anchorage evaluations, is the anchorage free of potentially adverse seismic conditions? Yes

Status: Y N U

Seismic Walkdown Checklist (SWC)

Equipment ID No.: 1DO10T

Equipment Class: (21) Tanks and Heat Exchangers

Equipment Description: 500 GAL DIESEL OIL DAY TANK

Interaction Effects

7. Are soft targets free from impact by nearby equipment or structures? Yes
8. Are overhead equipment, distribution systems, ceiling tiles and lighting, and masonry block walls not likely to collapse onto the equipment? Yes
Seismic block walls
9. Do attached lines have adequate flexibility to avoid damage? Yes
10. Based on the above seismic interaction evaluations, is equipment free of potentially adverse seismic interaction effects? Yes

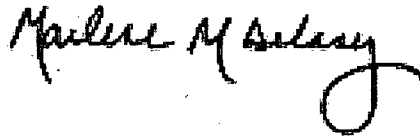
Other Adverse Conditions

11. Have you looked for and found no adverse seismic conditions that could adversely affect the safety functions of the equipment? Yes

Comments

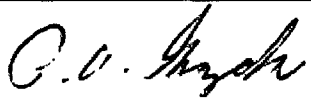
Seismic walkdown performed week of 7/16/12 by M. Delaney & P. Gazda

Evaluated by:



Marlene Delaney

Date: 10/1/2012



Philip Gazda

10/1/2012

Status: Y N U

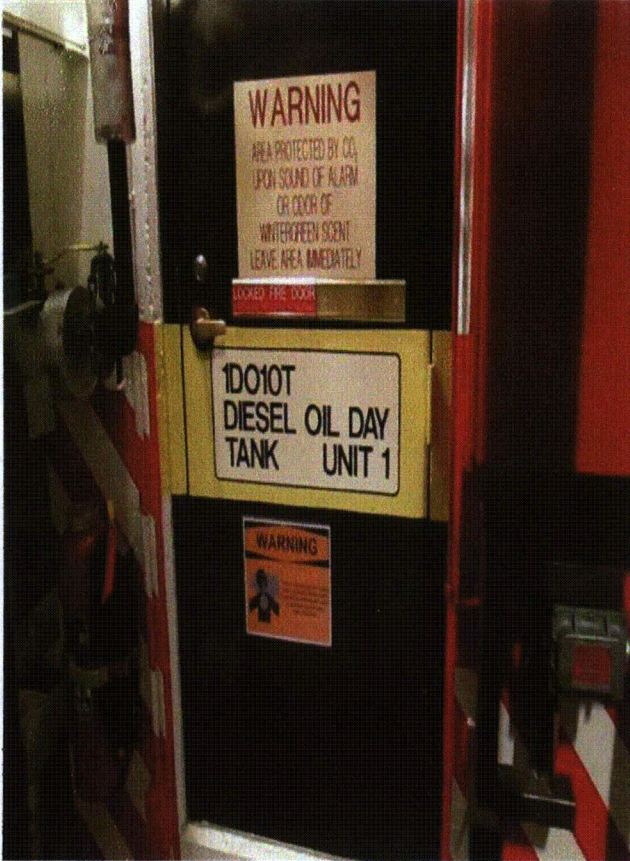
Seismic Walkdown Checklist (SWC)

Equipment ID No.: 1DO10T

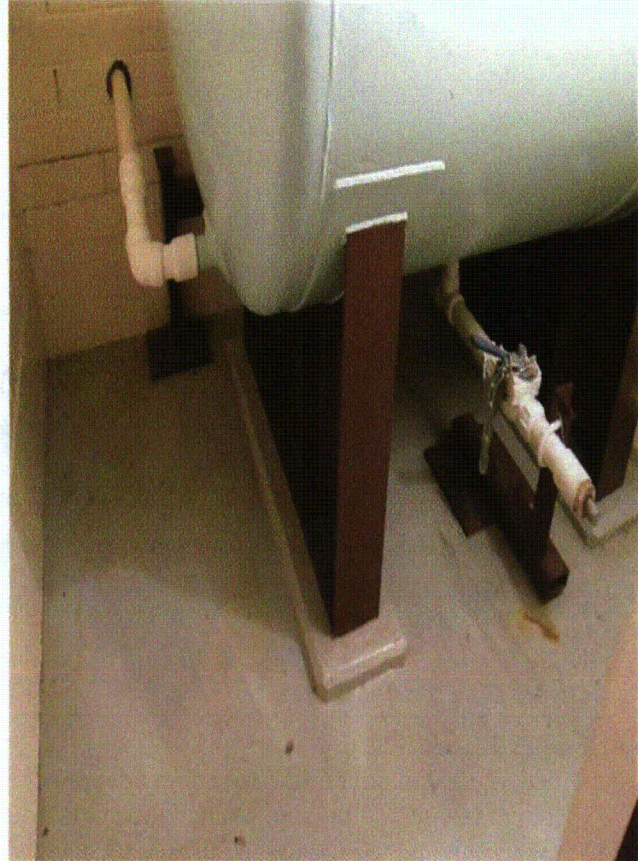
Equipment Class: (21) Tanks and Heat Exchangers

Equipment Description: 500 GAL DIESEL OIL DAY TANK

Photos



1DO10T 7-17-12 Group 2 010



1DO10T 7-17-12 Group 2 011

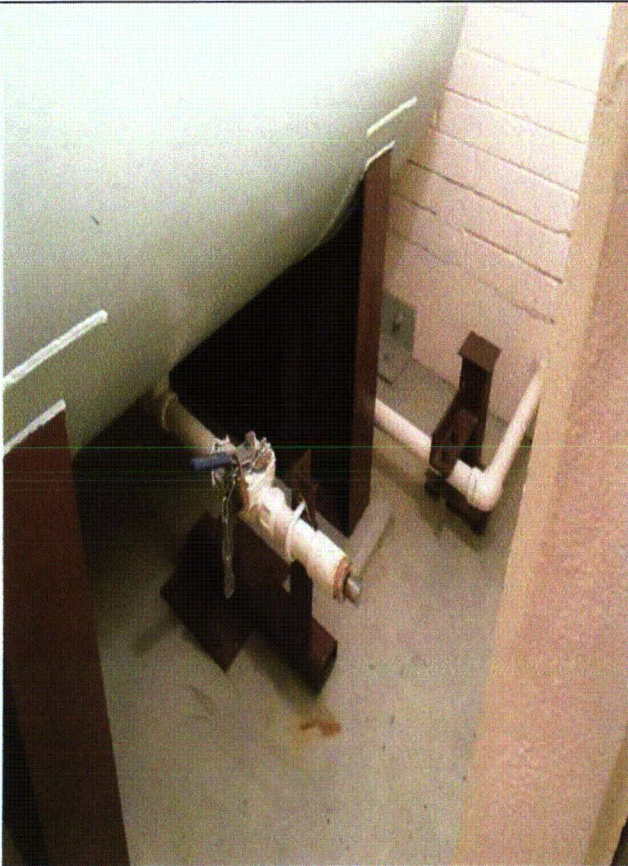
Status: Y N U

Seismic Walkdown Checklist (SWC)

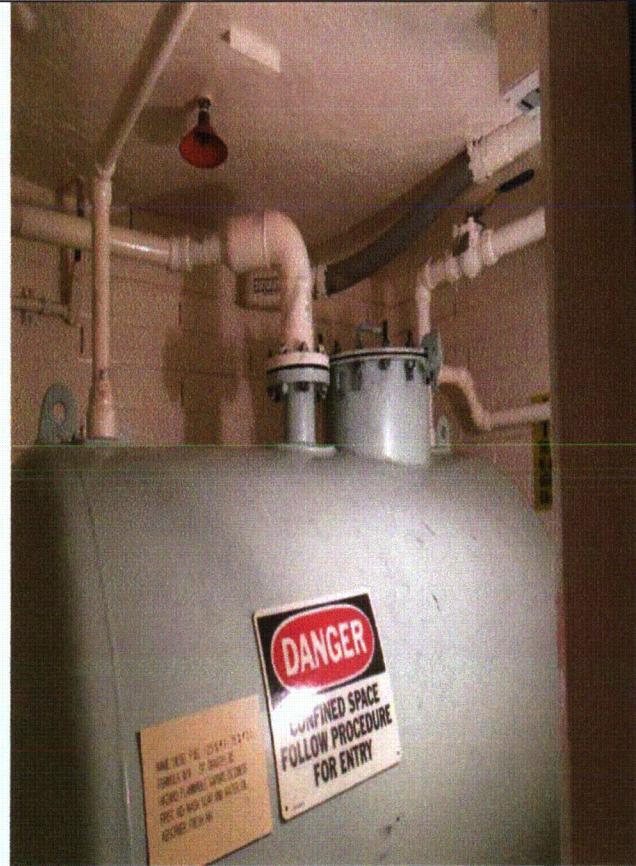
Equipment ID No.: 1DO10T

Equipment Class: (21) Tanks and Heat Exchangers

Equipment Description: 500 GAL DIESEL OIL DAY TANK



1DO10T 7-17-12 Group 2 012



1DO10T 7-17-12 Group 2 013

Status: Y N U

Seismic Walkdown Checklist (SWC)

Equipment ID No.: 1DO10T

Equipment Class: (21) Tanks and Heat Exchangers

Equipment Description: 500 GAL DIESEL OIL DAY TANK



1DO10T 7-17-12 Group 2 014

Status: Y N U

Seismic Walkdown Checklist (SWC)

Equipment ID No.: 1FC010

Equipment Class: (0) Other

Equipment Description: REFUELING WTR PURIF PMP SUCT FROM U-1 REFUEL CAV CNMT ISOL VALVE

Project: Braidwood 1 SWEL

Location (Bldg, Elev, Room/Area): Auxiliary, 364.00 ft, ALL

Manufacturer/Model:

Instructions for Completing Checklist

This checklist may be used to document the results of the Seismic Walkdown of an item of equipment on the SWEL. The space below each of the following questions may be used to record the results of judgments and findings. Additional space is provided at the end of this checklist for documenting other comments.

Anchorage

1. Is anchorage configuration verification required (i.e., is the item one of the 50% of SWEL items requiring such verification)? No

2. Is the anchorage free of bent, broken, missing or loose hardware? Not Applicable

3. Is the anchorage free of corrosion that is more than mild surface oxidation? Not Applicable

4. Is the anchorage free of visible cracks in the concrete near the anchors? Not Applicable

5. Is the anchorage configuration consistent with plant documentation? (Note: This question only applies if the item is one of the 50% for which an anchorage configuration verification is required.) Not Applicable

6. Based on the above anchorage evaluations, is the anchorage free of potentially adverse seismic conditions? Yes

Status: Y N U

Seismic Walkdown Checklist (SWC)

Equipment ID No.: 1FC010

Equipment Class: (0) Other

Equipment Description: REFUELING WTR PURIF PMP SUCT FROM U-1 REFUEL CAV CNMT ISOL VALVE

Interaction Effects

7. Are soft targets free from impact by nearby equipment or structures? Yes
8. Are overhead equipment, distribution systems, ceiling tiles and lighting, and masonry block walls not likely to collapse onto the equipment? Yes
9. Do attached lines have adequate flexibility to avoid damage? Yes
10. Based on the above seismic interaction evaluations, is equipment free of potentially adverse seismic interaction effects? Yes

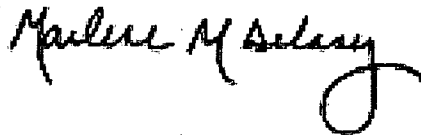
Other Adverse Conditions

11. Have you looked for and found no adverse seismic conditions that could adversely affect the safety functions of the equipment? Yes
Strut near valve, well-supported.

Comments

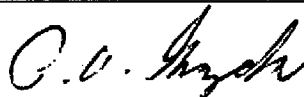
Seismic walkdown performed week of 7/16/12 by M. Delaney & P. Gazda

Evaluated by:



Marlene Delaney

Date: 10/1/2012



Philip Gazda

10/1/2012

Status: Y N U

Seismic Walkdown Checklist (SWC)

Equipment ID No.: 1FC010

Equipment Class: (0) Other

Equipment Description: REFUELING WTR PURIF PMP SUCT FROM U-1 REFUEL CAV CNMT ISOL
VALVE

Photos



1FC010 7-19-12 Group 2 001

Status: Y N U

Seismic Walkdown Checklist (SWC)

Equipment ID No.: 1FC01A

Equipment Class: (21) Tanks and Heat Exchangers

Equipment Description: SPENT FUEL PIT HEAT EXCHANGER

Project: Braidwood 1 SWEL

Location (Bldg, Elev, Room/Area): FH, 401.00 ft, ALL

Manufacturer/Model:

Instructions for Completing Checklist

This checklist may be used to document the results of the Seismic Walkdown of an item of equipment on the SWEL. The space below each of the following questions may be used to record the results of judgments and findings. Additional space is provided at the end of this checklist for documenting other comments.

Anchorage

1. Is anchorage configuration verification required (i.e., is the item one of the 50% of SWEL items requiring such verification)? Yes

2. Is the anchorage free of bent, broken, missing or loose hardware? Yes

3. Is the anchorage free of corrosion that is more than mild surface oxidation? Yes

4. Is the anchorage free of visible cracks in the concrete near the anchors? Yes

5. Is the anchorage configuration consistent with plant documentation? (Note: This question only applies if the item is one of the 50% for which an anchorage configuration verification is required.) Yes
Drawing M-1222 Sheet 4 Revision AM Detail 80A

6. Based on the above anchorage evaluations, is the anchorage free of potentially adverse seismic conditions? Yes

Status: Y N U

Seismic Walkdown Checklist (SWC)

Equipment ID No.: 1FC01A

Equipment Class: (21) Tanks and Heat Exchangers

Equipment Description: SPENT FUEL PIT HEAT EXCHANGER

Interaction Effects

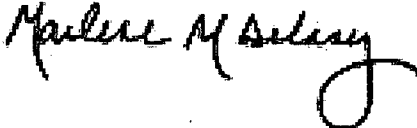
7. Are soft targets free from impact by nearby equipment or structures? Yes
8. Are overhead equipment, distribution systems, ceiling tiles and lighting, and masonry block walls not likely to collapse onto the equipment? Yes
9. Do attached lines have adequate flexibility to avoid damage? Yes
10. Based on the above seismic interaction evaluations, is equipment free of potentially adverse seismic interaction effects? Yes


Other Adverse Conditions

11. Have you looked for and found no adverse seismic conditions that could adversely affect the safety functions of the equipment? Yes

Comments

Seismic walkdown performed week of 7/16/12 by M. Delaney & P. Gazda

Evaluated by:  Marlene Delaney Date: 10/1/2012

 Philip Gazda 10/1/2012

Status: Y N U

Seismic Walkdown Checklist (SWC)

Equipment ID No.: 1FC01A

Equipment Class: (21) Tanks and Heat Exchangers

Equipment Description: SPENT FUEL PIT HEAT EXCHANGER

Photos



1FC01A 7-18-12 069



1FC01A 7-18-12 070

Status: Y N U

Seismic Walkdown Checklist (SWC)

Equipment ID No.: 1FC01A

Equipment Class: (21) Tanks and Heat Exchangers

Equipment Description: SPENT FUEL PIT HEAT EXCHANGER



1FC01A 7-18-12 071

Status: Y N U

Seismic Walkdown Checklist (SWC)

Equipment ID No.: 1FC01P

Equipment Class: (5) Horizontal Pumps

Equipment Description: U-1 FUEL POOL COOLING PUMP

Project: Braidwood 1 SWEL

Location (Bldg, Elev, Room/Area): Auxiliary, 401.00 ft, ALL

Manufacturer/Model:

Instructions for Completing Checklist

This checklist may be used to document the results of the Seismic Walkdown of an item of equipment on the SWEL. The space below each of the following questions may be used to record the results of judgments and findings. Additional space is provided at the end of this checklist for documenting other comments.

Anchorage

1. Is anchorage configuration verification required (i.e., is the item one of the 50% of SWEL items requiring such verification)? No

2. Is the anchorage free of bent, broken, missing or loose hardware? Yes

3. Is the anchorage free of corrosion that is more than mild surface oxidation? Yes

4. Is the anchorage free of visible cracks in the concrete near the anchors? Yes

5. Is the anchorage configuration consistent with plant documentation? (Note: This question only applies if the item is one of the 50% for which an anchorage configuration verification is required.) Not Applicable

6. Based on the above anchorage evaluations, is the anchorage free of potentially adverse seismic conditions? Yes

Status: Y N U

Seismic Walkdown Checklist (SWC)

Equipment ID No.: 1FC01P

Equipment Class: (5) Horizontal Pumps

Equipment Description: U-1 FUEL POOL COOLING PUMP

Interaction Effects

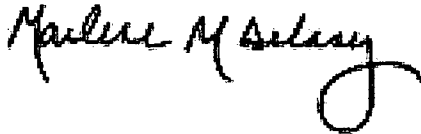
7. Are soft targets free from impact by nearby equipment or structures? Yes
8. Are overhead equipment, distribution systems, ceiling tiles and lighting, and masonry block walls not likely to collapse onto the equipment?
Seismic block walls Yes
9. Do attached lines have adequate flexibility to avoid damage? Yes
10. Based on the above seismic interaction evaluations, is equipment free of potentially adverse seismic interaction effects? Yes

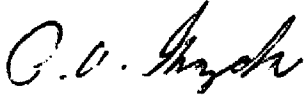
Other Adverse Conditions

11. Have you looked for and found no adverse seismic conditions that could adversely affect the safety functions of the equipment?
Crack in slab - not a structural/seismic issue. Yes

Comments

Seismic walkdown performed week of 7/16/12 by M. Delaney & P. Gazda

Evaluated by:  Marlene Delaney Date: 10/1/2012

 Philip Gazda 10/1/2012

Status: Y N U

Seismic Walkdown Checklist (SWC)

Equipment ID No.: 1FC01P

Equipment Class: (5) Horizontal Pumps

Equipment Description: U-1 FUEL POOL COOLING PUMP

Photos



1FC01P (6695 - cracked concrete) 7-18-12 077



1FC01P 7-18-12 059

Status: Y N U

Seismic Walkdown Checklist (SWC)

Equipment ID No.: 1FC01P

Equipment Class: (5) Horizontal Pumps

Equipment Description: U-1 FUEL POOL COOLING PUMP



1FC01P 7-19-12 010

Status: Y N U

Seismic Walkdown Checklist (SWC)

Equipment ID No.: 1FC8756

Equipment Class: (0) Other

Equipment Description: U1 SPENT FUEL PIT PMP SUCTION ISOL VALVE

Project: Braidwood 1 SWEL

Location (Bldg, Elev, Room/Area): FH, 401.00 ft, ALL

Manufacturer/Model:

Instructions for Completing Checklist

This checklist may be used to document the results of the Seismic Walkdown of an item of equipment on the SWEL. The space below each of the following questions may be used to record the results of judgments and findings. Additional space is provided at the end of this checklist for documenting other comments.

Anchorage

1. Is anchorage configuration verification required (i.e., is the item one of the 50% of SWEL items requiring such verification)? No

2. Is the anchorage free of bent, broken, missing or loose hardware? Not Applicable

3. Is the anchorage free of corrosion that is more than mild surface oxidation? Not Applicable

4. Is the anchorage free of visible cracks in the concrete near the anchors? Not Applicable

5. Is the anchorage configuration consistent with plant documentation? (Note: This question only applies if the item is one of the 50% for which an anchorage configuration verification is required.) Not Applicable

6. Based on the above anchorage evaluations, is the anchorage free of potentially adverse seismic conditions? Yes

Status: Y N U

Seismic Walkdown Checklist (SWC)

Equipment ID No.: 1FC8756

Equipment Class: (0) Other

Equipment Description: U1 SPENT FUEL PIT PMP SUCTION ISOL VALVE

Interaction Effects

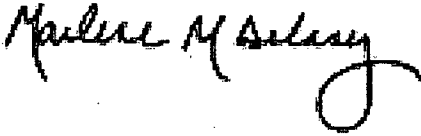
7. Are soft targets free from impact by nearby equipment or structures? Yes
8. Are overhead equipment, distribution systems, ceiling tiles and lighting, and masonry block walls not likely to collapse onto the equipment? Yes
9. Do attached lines have adequate flexibility to avoid damage? Yes
10. Based on the above seismic interaction evaluations, is equipment free of potentially adverse seismic interaction effects? Yes

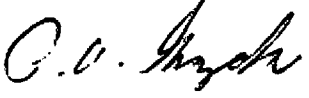
Other Adverse Conditions

11. Have you looked for and found no adverse seismic conditions that could adversely affect the safety functions of the equipment? Yes
Rugged valve and well-supported

Comments

Seismic walkdown performed week of 7/16/12 by M. Delaney & P. Gazda

Evaluated by:  Marlene Delaney Date: 10/1/2012

 Philip Gazda 10/1/2012

Status: Y N U

Seismic Walkdown Checklist (SWC)

Equipment ID No.: 1FC8756

Equipment Class: (0) Other

Equipment Description: U1 SPENT FUEL PIT PMP SUCTION ISOL VALVE

Photos



1FC8756 7-18-12 062



1FC8756 7-18-12 063

Status: Y N U

Seismic Walkdown Checklist (SWC)

Equipment ID No.: 1FC8758

Equipment Class: (0) Other

Equipment Description: REFUELING WTR PURIF PMP SUCT FROM U-1 RWST VALVE

Project: Braidwood 1 SWEL

Location (Bldg, Elev, Room/Area): Auxiliary, 364.00 ft, ALL

Manufacturer/Model:

Instructions for Completing Checklist

This checklist may be used to document the results of the Seismic Walkdown of an item of equipment on the SWEL. The space below each of the following questions may be used to record the results of judgments and findings. Additional space is provided at the end of this checklist for documenting other comments.

Anchorage

- | | |
|--|----------------|
| 1. Is anchorage configuration verification required (i.e., is the item one of the 50% of SWEL items requiring such verification)? | No |
| 2. Is the anchorage free of bent, broken, missing or loose hardware? | Not Applicable |
| 3. Is the anchorage free of corrosion that is more than mild surface oxidation? | Not Applicable |
| 4. Is the anchorage free of visible cracks in the concrete near the anchors? | Not Applicable |
| 5. Is the anchorage configuration consistent with plant documentation? (Note: This question only applies if the item is one of the 50% for which an anchorage configuration verification is required.) | Not Applicable |
| 6. Based on the above anchorage evaluations, is the anchorage free of potentially adverse seismic conditions? | Yes |

Status: Y N U

Seismic Walkdown Checklist (SWC)

Equipment ID No.: 1FC8758

Equipment Class: (0) Other

Equipment Description: REFUELING WTR PURIF PMP SUCT FROM U-1 RWST VALVE

Interaction Effects

7. Are soft targets free from impact by nearby equipment or structures? Yes
8. Are overhead equipment, distribution systems, ceiling tiles and lighting, and masonry block walls not likely to collapse onto the equipment? Yes
9. Do attached lines have adequate flexibility to avoid damage? Yes
10. Based on the above seismic interaction evaluations, is equipment free of potentially adverse seismic interaction effects? Yes

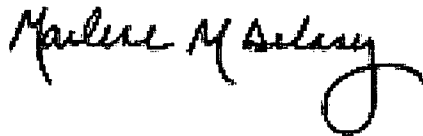
Other Adverse Conditions

11. Have you looked for and found no adverse seismic conditions that could adversely affect the safety functions of the equipment? Yes
Inspection from floor.

Comments

Seismic walkdown performed week of 7/16/12 by M. Delaney & P. Gazda

Evaluated by:



Marlene Delaney

Date: 10/1/2012



Philip Gazda

10/1/2012

Status: Y N U

Seismic Walkdown Checklist (SWC)

Equipment ID No.: 1FC8758

Equipment Class: (0) Other

Equipment Description: REFUELING WTR PURIF PMP SUCT FROM U-1 RWST VALVE

Photos



1FC8758 7-19-12 039

Status: Y N U

Seismic Walkdown Checklist (SWC)

Equipment ID No.: 1FC8762A

Equipment Class: (0) Other

Equipment Description: SPENT FUEL PIT HX INLET VALVE

Project: Braidwood 1 SWEL

Location (Bldg, Elev, Room/Area): FH, 401.00 ft, ALL

Manufacturer/Model:

Instructions for Completing Checklist

This checklist may be used to document the results of the Seismic Walkdown of an item of equipment on the SWEL. The space below each of the following questions may be used to record the results of judgments and findings. Additional space is provided at the end of this checklist for documenting other comments.

Anchorage

1. Is anchorage configuration verification required (i.e., is the item one of the 50% of SWEL items requiring such verification)? No

2. Is the anchorage free of bent, broken, missing or loose hardware? Not Applicable

3. Is the anchorage free of corrosion that is more than mild surface oxidation? Not Applicable

4. Is the anchorage free of visible cracks in the concrete near the anchors? Not Applicable

5. Is the anchorage configuration consistent with plant documentation? (Note: This question only applies if the item is one of the 50% for which an anchorage configuration verification is required.) Not Applicable

6. Based on the above anchorage evaluations, is the anchorage free of potentially adverse seismic conditions? Yes

Status: Y N U

Seismic Walkdown Checklist (SWC)

Equipment ID No.: 1FC8762A

Equipment Class: (0) Other

Equipment Description: SPENT FUEL PIT HX INLET VALVE

Interaction Effects

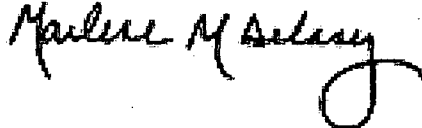
7. Are soft targets free from impact by nearby equipment or structures? Yes
8. Are overhead equipment, distribution systems, ceiling tiles and lighting, and masonry block walls not likely to collapse onto the equipment? Yes
Seismic block walls
9. Do attached lines have adequate flexibility to avoid damage? Yes
10. Based on the above seismic interaction evaluations, is equipment free of potentially adverse seismic interaction effects? Yes

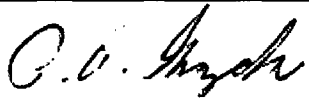
Other Adverse Conditions

11. Have you looked for and found no adverse seismic conditions that could adversely affect the safety functions of the equipment? Yes
Rugged, well-supported valve

Comments

Seismic walkdown performed week of 7/16/12 by M. Delaney & P. Gazda

Evaluated by:  Marlene Delaney Date: 10/1/2012

 Philip Gazda 10/1/2012

Status: Y N U

Seismic Walkdown Checklist (SWC)

Equipment ID No.: 1FC8762A

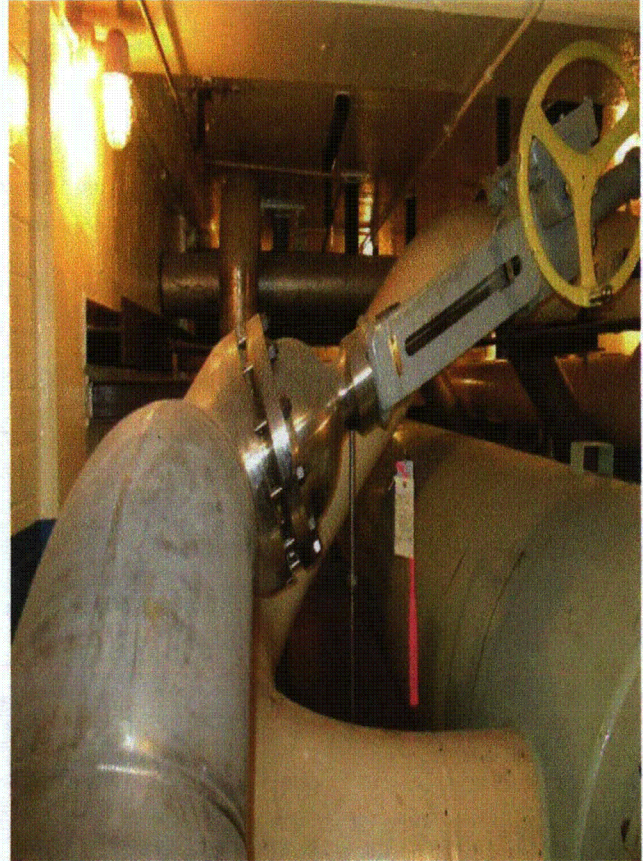
Equipment Class: (0) Other

Equipment Description: SPENT FUEL PIT HX INLET VALVE

Photos



1FC8762A 7-18-12 064



1FC8762A 7-18-12 065