

Status: Y N U

Seismic Walkdown Checklist (SWC)

Equipment ID No.: 0VC15J

Equipment Class: (20) Instrumentation and Control Panels and Cabinets

Equipment Description: MCR U-1 HVAC START PNL

Project: Braidwood 1 SWEL

Location (Bldg, Elev, Room/Area): Auxiliary, 451.00 ft, ALL

Manufacturer/Model:

Instructions for Completing Checklist

This checklist may be used to document the results of the Seismic Walkdown of an item of equipment on the SWEL. The space below each of the following questions may be used to record the results of judgments and findings. Additional space is provided at the end of this checklist for documenting other comments.

Anchorage

1. Is anchorage configuration verification required (i.e., is the item one of the 50% of SWEL items requiring such verification)? No

2. Is the anchorage free of bent, broken, missing or loose hardware? Yes
Welded detail

3. Is the anchorage free of corrosion that is more than mild surface oxidation? Yes

4. Is the anchorage free of visible cracks in the concrete near the anchors? Yes

5. Is the anchorage configuration consistent with plant documentation? (Note: This question only applies if the item is one of the 50% for which an anchorage configuration verification is required.) Not Applicable

6. Based on the above anchorage evaluations, is the anchorage free of potentially adverse seismic conditions? Yes

Status: Y N U

Seismic Walkdown Checklist (SWC)

Equipment ID No.: 0VC15J

Equipment Class: (20) Instrumentation and Control Panels and Cabinets

Equipment Description: MCR U-1 HVAC START PNL

Interaction Effects

7. Are soft targets free from impact by nearby equipment or structures? Yes
8. Are overhead equipment, distribution systems, ceiling tiles and lighting, and masonry block walls not likely to collapse onto the equipment? Yes
Seismic block wall behind equipment
9. Do attached lines have adequate flexibility to avoid damage? Yes
10. Based on the above seismic interaction evaluations, is equipment free of potentially adverse seismic interaction effects? Yes

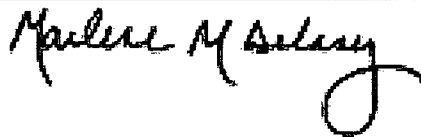
Other Adverse Conditions

11. Have you looked for and found no adverse seismic conditions that could adversely affect the safety functions of the equipment? Yes

Comments

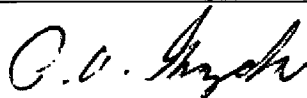
Seismic walkdown performed week of 7/16/12 by M. Delaney & P. Gazda

Evaluated by:



Marlene Delaney

Date: 10/1/2012



Philip Gazda

10/1/2012

Status: Y N U

Seismic Walkdown Checklist (SWC)

Equipment ID No.: 0VC15J

Equipment Class: (20) Instrumentation and Control Panels and Cabinets

Equipment Description: MCR U-1 HVAC START PNL

Photos



0VC15J 7-16-12 037



0VC15J 7-16-12 038

Status: Y N U

Seismic Walkdown Checklist (SWC)

Equipment ID No.: 0VC15J

Equipment Class: (20) Instrumentation and Control Panels and Cabinets

Equipment Description: MCR U-1 HVAC START PNL



0VC15J 7-16-12 039

Status: Y N U

Seismic Walkdown Checklist (SWC)

Equipment ID No.: 0WO01CB

Equipment Class: (11) Chillers

Equipment Description: CHILLED WATER SYS CONTROL ROOM REFRIGERATION UNIT 0B

Project: Braidwood 1 SWEL

Location (Bldg, Elev, Room/Area): Auxiliary, 383.00 ft, ALL

Manufacturer/Model:

Instructions for Completing Checklist

This checklist may be used to document the results of the Seismic Walkdown of an item of equipment on the SWEL. The space below each of the following questions may be used to record the results of judgments and findings. Additional space is provided at the end of this checklist for documenting other comments.

Anchorage

1. Is anchorage configuration verification required (i.e., is the item one of the 50% of SWEL items requiring such verification)? No

2. Is the anchorage free of bent, broken, missing or loose hardware? Yes

3. Is the anchorage free of corrosion that is more than mild surface oxidation? Yes

4. Is the anchorage free of visible cracks in the concrete near the anchors? Yes

5. Is the anchorage configuration consistent with plant documentation? (Note: This question only applies if the item is one of the 50% for which an anchorage configuration verification is required.) Not Applicable

6. Based on the above anchorage evaluations, is the anchorage free of potentially adverse seismic conditions? Yes

Status: Y N U

Seismic Walkdown Checklist (SWC)

Equipment ID No.: 0WO01CB

Equipment Class: (11) Chillers

Equipment Description: CHILLED WATER SYS CONTROL ROOM REFRIGERATION UNIT 0B

Interaction Effects

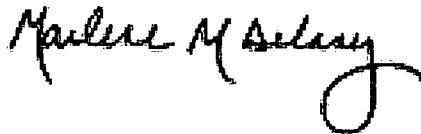
7. Are soft targets free from impact by nearby equipment or structures? Yes
8. Are overhead equipment, distribution systems, ceiling tiles and lighting, and masonry block walls not likely to collapse onto the equipment? Yes
9. Do attached lines have adequate flexibility to avoid damage? Yes
10. Based on the above seismic interaction evaluations, is equipment free of potentially adverse seismic interaction effects? Yes

Other Adverse Conditions

11. Have you looked for and found no adverse seismic conditions that could adversely affect the safety functions of the equipment? Yes
Discoloration and deterioration under equipment - not a structural/seismic concern
Hairline cracks in adjacent wall are insignificant and not a structural/seismic concern

Comments

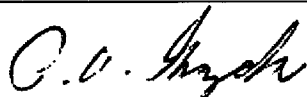
Seismic walkdown performed week of 7/16/12 by M. Delaney & P. Gazda



Evaluated by:

Marlene Delaney

Date: 10/1/2012



Philip Gazda

10/1/2012

Status: Y N U

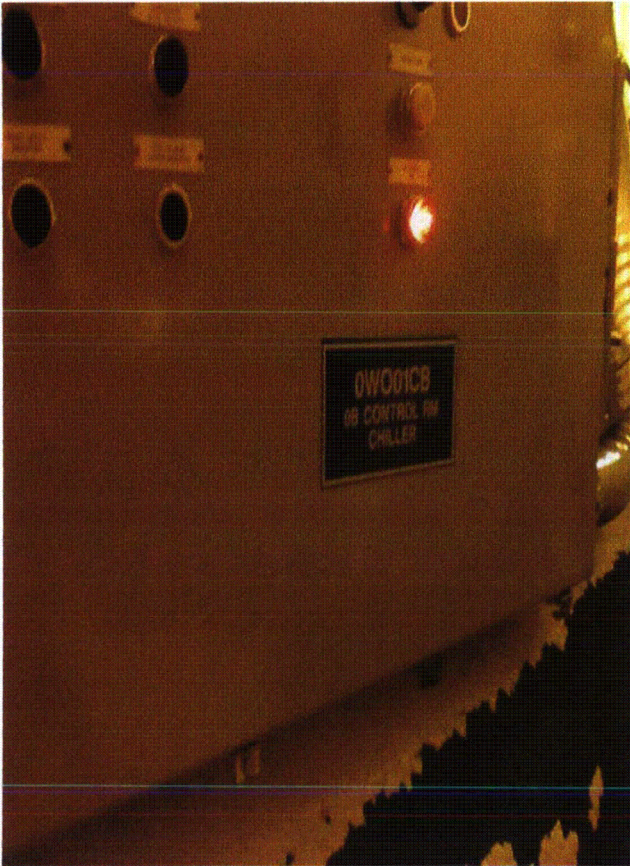
Seismic Walkdown Checklist (SWC)

Equipment ID No.: 0WO01CB

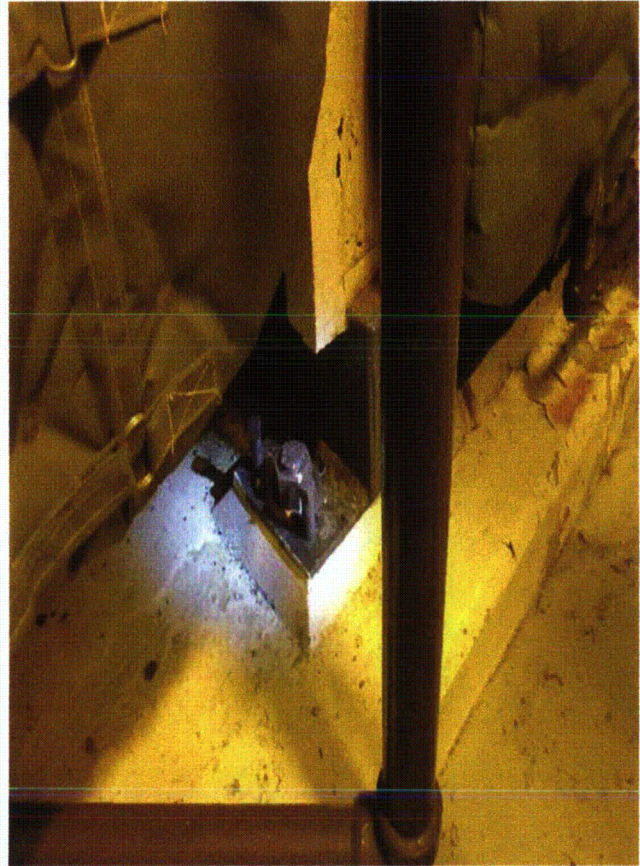
Equipment Class: (11) Chillers

Equipment Description: CHILLED WATER SYS CONTROL ROOM REFRIGERATION UNIT 0B

Photos



0WO01CB 7-18-12 010



0WO01CB 7-18-12 011

Status: Y N U

Seismic Walkdown Checklist (SWC)

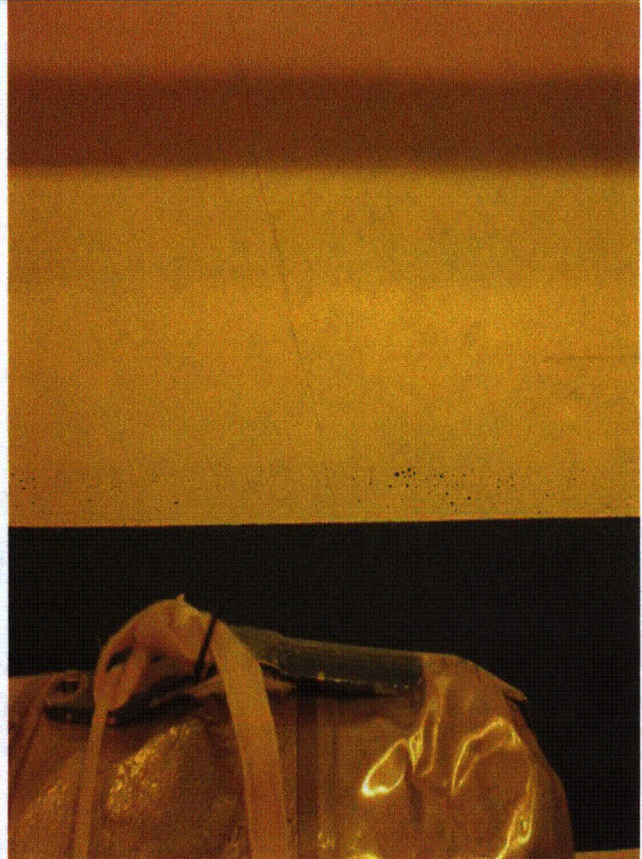
Equipment ID No.: 0WO01CB

Equipment Class: (11) Chillers

Equipment Description: CHILLED WATER SYS CONTROL ROOM REFRIGERATION UNIT 0B



0WO01CB 7-18-12 012



0WO01CB 7-18-12 013

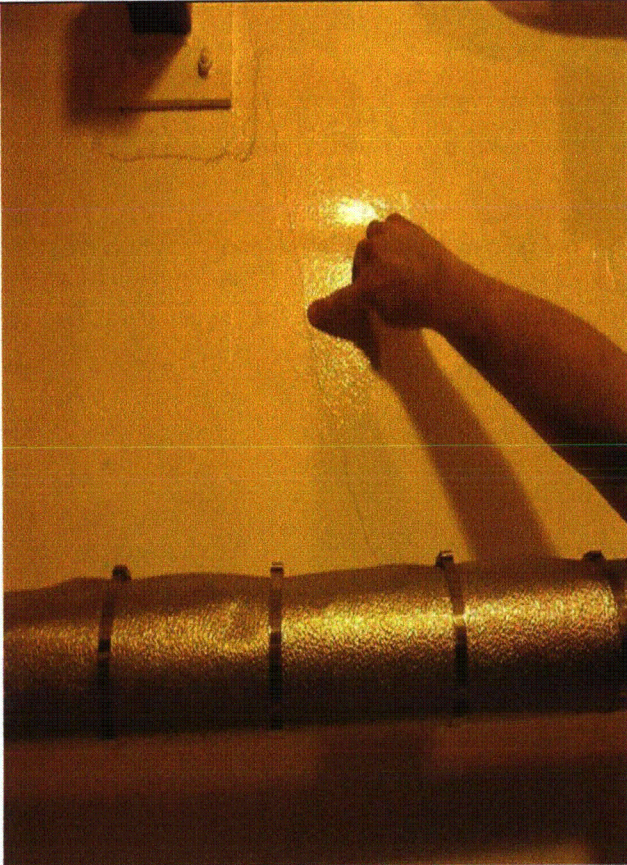
Status: Y N U

Seismic Walkdown Checklist (SWC)

Equipment ID No.: 0WO01CB

Equipment Class: (11) Chillers

Equipment Description: CHILLED WATER SYS CONTROL ROOM REFRIGERATION UNIT 0B



0WO01CB 7-18-12 014

Status: Y N U

Seismic Walkdown Checklist (SWC)

Equipment ID No.: 1AF005E

Equipment Class: (7) Fluid-Operated Valves

Equipment Description: S/G 1A FLOW CONT VLV ASMBLY; 4"

Project: Braidwood 1 SWEL

Location (Bldg, Elev, Room/Area): Auxiliary, 364.00 ft, ALL

Manufacturer/Model:

Instructions for Completing Checklist

This checklist may be used to document the results of the Seismic Walkdown of an item of equipment on the SWEL. The space below each of the following questions may be used to record the results of judgments and findings. Additional space is provided at the end of this checklist for documenting other comments.

Anchorage

1. Is anchorage configuration verification required (i.e., is the item one of the 50% of SWEL items requiring such verification)? No

2. Is the anchorage free of bent, broken, missing or loose hardware? Not Applicable

3. Is the anchorage free of corrosion that is more than mild surface oxidation? Not Applicable

4. Is the anchorage free of visible cracks in the concrete near the anchors? Not Applicable

5. Is the anchorage configuration consistent with plant documentation? (Note: This question only applies if the item is one of the 50% for which an anchorage configuration verification is required.) Not Applicable

6. Based on the above anchorage evaluations, is the anchorage free of potentially adverse seismic conditions? Yes

Status: Y N U

Seismic Walkdown Checklist (SWC)

Equipment ID No.: 1AF005E

Equipment Class: (7) Fluid-Operated Valves

Equipment Description: S/G 1A FLOW CONT VLV ASMBLY; 4"

Interaction Effects

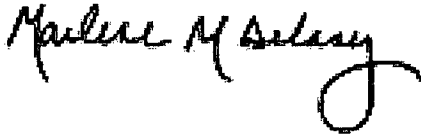
7. Are soft targets free from impact by nearby equipment or structures? Yes
8. Are overhead equipment, distribution systems, ceiling tiles and lighting, and masonry block walls not likely to collapse onto the equipment? Yes
Seismic block walls
9. Do attached lines have adequate flexibility to avoid damage? Yes
10. Based on the above seismic interaction evaluations, is equipment free of potentially adverse seismic interaction effects? Yes
No large lateral movements of the valve due to adequate anchorage

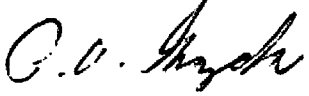
Other Adverse Conditions

11. Have you looked for and found no adverse seismic conditions that could adversely affect the safety functions of the equipment? Yes

Comments

Seismic walkdown performed week of 7/16/12 by M. Delaney & P. Gazda

Evaluated by:  Marlene Delaney Date: 10/1/2012

 Philip Gazda 10/1/2012

Status: Y N U

Seismic Walkdown Checklist (SWC)

Equipment ID No.: 1AF005E

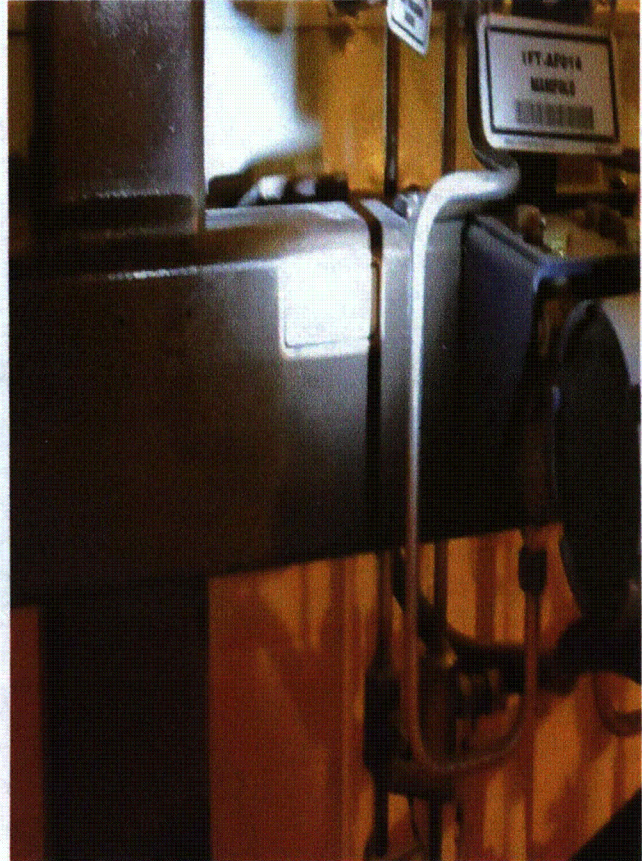
Equipment Class: (7) Fluid-Operated Valves

Equipment Description: S/G 1A FLOW CONT VLV ASMBLY; 4"

Photos



1AF005E 7-18-12 015



1AF005E 7-18-12 016

Status: Y N U

Seismic Walkdown Checklist (SWC)

Equipment ID No.: 1AF006B

Equipment Class: (8) Motor-Operated and Solenoid-Operated Valves

Equipment Description: AUXILIARY FEEDWATER PMP 1B SX SUCT.VLV.ASMBLY; 6"

Project: Braidwood 1 SWEL

Location (Bldg, Elev, Room/Area): Auxiliary, 383.00 ft, ALL

Manufacturer/Model:

Instructions for Completing Checklist

This checklist may be used to document the results of the Seismic Walkdown of an item of equipment on the SWEL. The space below each of the following questions may be used to record the results of judgments and findings. Additional space is provided at the end of this checklist for documenting other comments.

Anchorage

1. Is anchorage configuration verification required (i.e., is the item one of the 50% of SWEL items requiring such verification)? No

2. Is the anchorage free of bent, broken, missing or loose hardware? Not Applicable

3. Is the anchorage free of corrosion that is more than mild surface oxidation? Not Applicable

4. Is the anchorage free of visible cracks in the concrete near the anchors? Not Applicable

5. Is the anchorage configuration consistent with plant documentation? (Note: This question only applies if the item is one of the 50% for which an anchorage configuration verification is required.) Not Applicable

6. Based on the above anchorage evaluations, is the anchorage free of potentially adverse seismic conditions? Yes

Status: Y N U

Seismic Walkdown Checklist (SWC)

Equipment ID No.: 1AF006B

Equipment Class: (8) Motor-Operated and Solenoid-Operated Valves

Equipment Description: AUXILIARY FEEDWATER PMP 1B SX SUCT VLV ASMBLY; 6"

Interaction Effects

7. Are soft targets free from impact by nearby equipment or structures? Yes
8. Are overhead equipment, distribution systems, ceiling tiles and lighting, and masonry block walls not likely to collapse onto the equipment? Yes
9. Do attached lines have adequate flexibility to avoid damage? Yes
10. Based on the above seismic interaction evaluations, is equipment free of potentially adverse seismic interaction effects? Yes

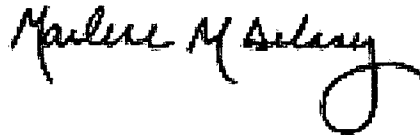
Other Adverse Conditions

11. Have you looked for and found no adverse seismic conditions that could adversely affect the safety functions of the equipment?
well-supported pipe Yes

Comments

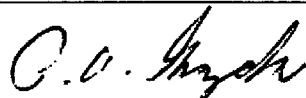
Seismic walkdown performed week of 7/16/12 by M. Delaney & P. Gazda

Evaluated by:



Marlene Delaney

Date: 10/1/2012



Philip Gazda

10/1/2012

Status: Y N U

Seismic Walkdown Checklist (SWC)

Equipment ID No.: 1AF006B

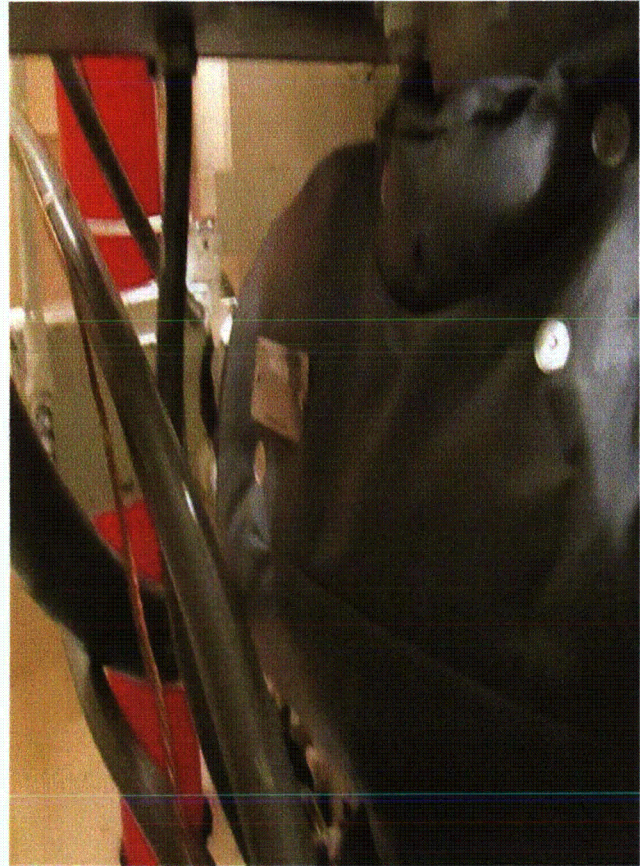
Equipment Class: (8) Motor-Operated and Solenoid-Operated Valves

Equipment Description: AUXILIARY FEEDWATER PMP 1B SX SUCT VLV ASMBLY; 6"

Photos



1AF006B 7-17-12 Group 2 036



1AF006B 7-17-12 Group 2 037

Status: Y N U

Seismic Walkdown Checklist (SWC)

Equipment ID No.: 1AF017B

Equipment Class: (8) Motor-Operated and Solenoid-Operated Valves

Equipment Description: AUXILIARY FEEDWATER PMP 1B SX SUCT VLV ASMBLY; 6"

Project: Braidwood 1 SWEL

Location (Bldg, Elev, Room/Area): Auxiliary, 383.00 ft, ALL

Manufacturer/Model:

Instructions for Completing Checklist

This checklist may be used to document the results of the Seismic Walkdown of an item of equipment on the SWEL. The space below each of the following questions may be used to record the results of judgments and findings. Additional space is provided at the end of this checklist for documenting other comments.

Anchorage

1. Is anchorage configuration verification required (i.e., is the item one of the 50% of SWEL items requiring such verification)? No

2. Is the anchorage free of bent, broken, missing or loose hardware? Not Applicable

3. Is the anchorage free of corrosion that is more than mild surface oxidation? Not Applicable

4. Is the anchorage free of visible cracks in the concrete near the anchors? Not Applicable

5. Is the anchorage configuration consistent with plant documentation? (Note: This question only applies if the item is one of the 50% for which an anchorage configuration verification is required.) Not Applicable

6. Based on the above anchorage evaluations, is the anchorage free of potentially adverse seismic conditions? Yes

Status: Y N U

Seismic Walkdown Checklist (SWC)

Equipment ID No.: 1AF017B

Equipment Class: (8) Motor-Operated and Solenoid-Operated Valves

Equipment Description: AUXILIARY FEEDWATER PMP 1B SX SUCT VLV ASMBLY; 6"

Interaction Effects

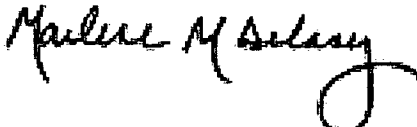
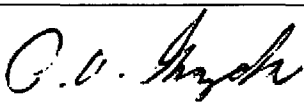
- | | |
|---|-----|
| 7. Are soft targets free from impact by nearby equipment or structures? | Yes |
| 8. Are overhead equipment, distribution systems, ceiling tiles and lighting, and masonry block walls not likely to collapse onto the equipment? | Yes |
| 9. Do attached lines have adequate flexibility to avoid damage? | Yes |
| 10. Based on the above seismic interaction evaluations, is equipment free of potentially adverse seismic interaction effects? | Yes |

Other Adverse Conditions

- | | |
|--|-----|
| 11. Have you looked for and found no adverse seismic conditions that could adversely affect the safety functions of the equipment?
<i>well-supported pipe</i> | Yes |
|--|-----|

Comments

Seismic walkdown performed week of 7/16/12 by M. Delaney & P. Gazda

Evaluated by:		Marlene Delaney	Date:	10/1/2012
		Philip Gazda		10/1/2012

Status: Y N U

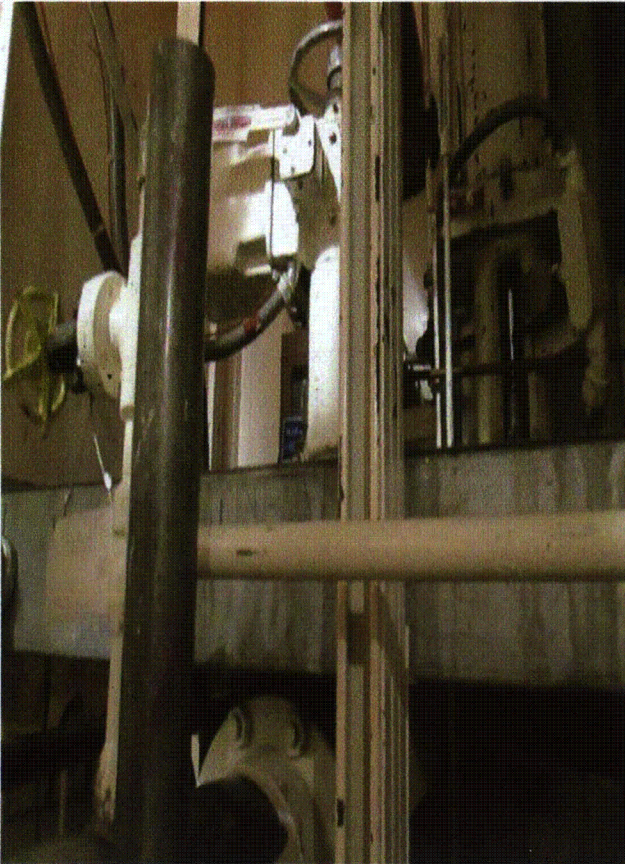
Seismic Walkdown Checklist (SWC)

Equipment ID No.: 1AF017B

Equipment Class: (8) Motor-Operated and Solenoid-Operated Valves

Equipment Description: AUXILIARY FEEDWATER PMP 1B SX SUCT VLV ASMBLY; 6"

Photos



1AF017B 7-17-12 Group 2 038

Status: Y N U

Seismic Walkdown Checklist (SWC)

Equipment ID No.: 1AF01EA-A

Equipment Class: (15) Batteries on Racks

Equipment Description: AF PUMP 1B BATTERY CHARGER

Project: Braidwood 1 SWEL

Location (Bldg, Elev, Room/Area): Auxiliary, 383.00 ft, ALL

Manufacturer/Model:

Instructions for Completing Checklist

This checklist may be used to document the results of the Seismic Walkdown of an item of equipment on the SWEL. The space below each of the following questions may be used to record the results of judgments and findings. Additional space is provided at the end of this checklist for documenting other comments.

Anchorage

1. Is anchorage configuration verification required (i.e., is the item one of the 50% of SWEL items requiring such verification)? Yes

2. Is the anchorage free of bent, broken, missing or loose hardware? Yes

3. Is the anchorage free of corrosion that is more than mild surface oxidation? Yes

4. Is the anchorage free of visible cracks in the concrete near the anchors? Yes

5. Is the anchorage configuration consistent with plant documentation? (Note: This question only applies if the item is one of the 50% for which an anchorage configuration verification is required.) Yes
Drawing 20E-0-3322D09 Revision V Detail 9709

6. Based on the above anchorage evaluations, is the anchorage free of potentially adverse seismic conditions? Yes

Status: Y N U

Seismic Walkdown Checklist (SWC)

Equipment ID No.: 1AF01EA-A

Equipment Class: (15) Batteries on Racks

Equipment Description: AF PUMP 1B BATTERY CHARGER

Interaction Effects

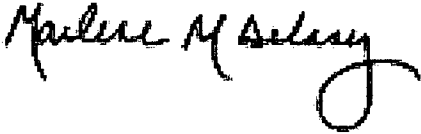
7. Are soft targets free from impact by nearby equipment or structures? Yes
8. Are overhead equipment, distribution systems, ceiling tiles and lighting, and masonry block walls not likely to collapse onto the equipment? Yes
9. Do attached lines have adequate flexibility to avoid damage? Yes
10. Based on the above seismic interaction evaluations, is equipment free of potentially adverse seismic interaction effects? Yes

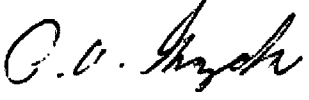
Other Adverse Conditions

11. Have you looked for and found no adverse seismic conditions that could adversely affect the safety functions of the equipment? Yes

Comments

Seismic walkdown performed week of 7/16/12 by M. Delaney & P. Gazda

Evaluated by:  Marlene Delaney Date: 10/1/2012

 Philip Gazda 10/1/2012

Status: Y N U

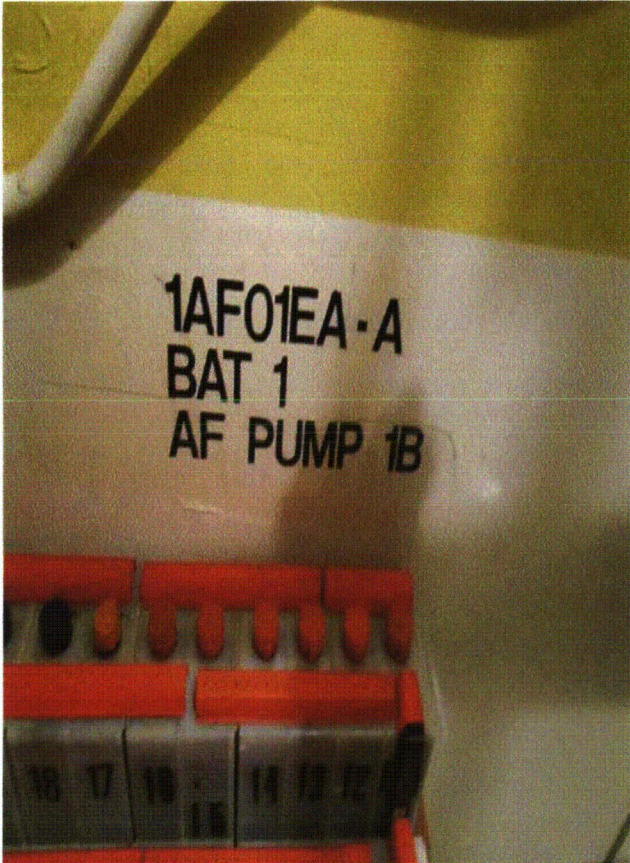
Seismic Walkdown Checklist (SWC)

Equipment ID No.: 1AF01EA-A

Equipment Class: (15) Batteries on Racks

Equipment Description: AF PUMP 1B BATTERY CHARGER

Photos



1AF01EA-A 7-17-12 Group 2 023

Status: Y N U

Seismic Walkdown Checklist (SWC)

Equipment ID No.: 1AF01EB-A

Equipment Class: (15) Batteries on Racks

Equipment Description: AF BATTERY 2 AUXILIARY FEEDWATER PUMP 1B

Project: Braidwood 1 SWEL

Location (Bldg, Elev, Room/Area): Auxiliary, 383.00 ft, ALL

Manufacturer/Model:

Instructions for Completing Checklist

This checklist may be used to document the results of the Seismic Walkdown of an item of equipment on the SWEL. The space below each of the following questions may be used to record the results of judgments and findings. Additional space is provided at the end of this checklist for documenting other comments.

Anchorage

1. Is anchorage configuration verification required (i.e., is the item one of the 50% of SWEL items requiring such verification)? Yes

2. Is the anchorage free of bent, broken, missing or loose hardware? Yes

3. Is the anchorage free of corrosion that is more than mild surface oxidation? Yes

4. Is the anchorage free of visible cracks in the concrete near the anchors? Yes

5. Is the anchorage configuration consistent with plant documentation? (Note: This question only applies if the item is one of the 50% for which an anchorage configuration verification is required.)
Drawing 20E-0-3322D09 Revision V Yes

6. Based on the above anchorage evaluations, is the anchorage free of potentially adverse seismic conditions? Yes

Status: Y N U

Seismic Walkdown Checklist (SWC)

Equipment ID No.: 1AF01EB-A

Equipment Class: (15) Batteries on Racks

Equipment Description: AF BATTERY 2 AUXILIARY FEEDWATER PUMP 1B

Interaction Effects

7. Are soft targets free from impact by nearby equipment or structures? Yes
8. Are overhead equipment, distribution systems, ceiling tiles and lighting, and masonry block walls not likely to collapse onto the equipment? Yes
9. Do attached lines have adequate flexibility to avoid damage? Yes
10. Based on the above seismic interaction evaluations, is equipment free of potentially adverse seismic interaction effects? Yes

Other Adverse Conditions

11. Have you looked for and found no adverse seismic conditions that could adversely affect the safety functions of the equipment? Yes

Comments

Seismic walkdown performed week of 7/16/12 by M. Delaney & P. Gazda

Evaluated by: Marlene M. Delaney Marlene Delaney Date: 10/1/2012

P. P. Gazda Philip Gazda 10/1/2012

Status: Y N U

Seismic Walkdown Checklist (SWC)

Equipment ID No.: 1AF01EB-A

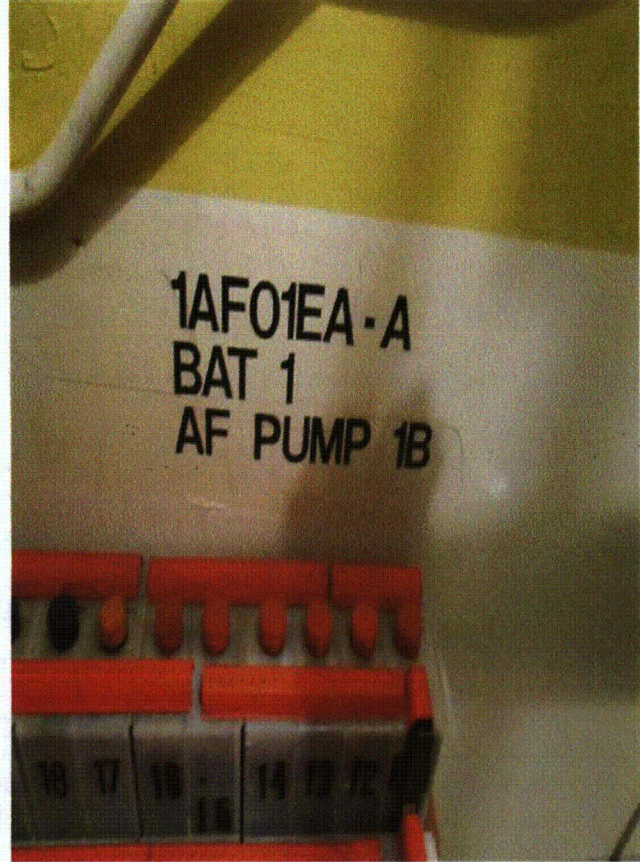
Equipment Class: (15) Batteries on Racks

Equipment Description: AF BATTERY 2 AUXILIARY FEEDWATER PUMP 1B

Photos



1AF01EB-A 7-17-12 Group 2 022



1AF01EB-A 7-17-12 Group 2 023

Status: Y N U

Seismic Walkdown Checklist (SWC)

Equipment ID No.: 1AF01EB-B

Equipment Class: (15) Batteries on Racks

Equipment Description: AUX FW PUMP 1B ENG AUX START RLY BATT 1 & 2

Project: Braidwood 1 SWEL

Location (Bldg, Elev, Room/Area): Auxiliary, 383.00 ft, ALL

Manufacturer/Model:

Instructions for Completing Checklist

This checklist may be used to document the results of the Seismic Walkdown of an item of equipment on the SWEL. The space below each of the following questions may be used to record the results of judgments and findings. Additional space is provided at the end of this checklist for documenting other comments.

Anchorage

1. Is anchorage configuration verification required (i.e., is the item one of the 50% of SWEL items requiring such verification)? Yes

2. Is the anchorage free of bent, broken, missing or loose hardware? Yes

3. Is the anchorage free of corrosion that is more than mild surface oxidation? Yes

4. Is the anchorage free of visible cracks in the concrete near the anchors? Yes

5. Is the anchorage configuration consistent with plant documentation? (Note: This question only applies if the item is one of the 50% for which an anchorage configuration verification is required.) Yes
Drawing 20E-0-3322D09 Revision V

6. Based on the above anchorage evaluations, is the anchorage free of potentially adverse seismic conditions? Yes

Status: Y N U

Seismic Walkdown Checklist (SWC)

Equipment ID No.: 1AF01EB-B

Equipment Class: (15) Batteries on Racks

Equipment Description: AUX FW PUMP 1B ENG AUX START RLY BATT 1 & 2

Interaction Effects

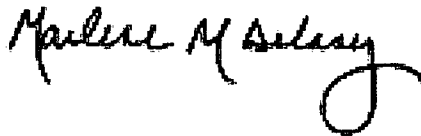
7. Are soft targets free from impact by nearby equipment or structures? Yes
8. Are overhead equipment, distribution systems, ceiling tiles and lighting, and masonry block walls not likely to collapse onto the equipment? Yes
9. Do attached lines have adequate flexibility to avoid damage? Yes
10. Based on the above seismic interaction evaluations, is equipment free of potentially adverse seismic interaction effects? Yes

Other Adverse Conditions

11. Have you looked for and found no adverse seismic conditions that could adversely affect the safety functions of the equipment? Yes

Comments

Seismic walkdown performed week of 7/16/12 by M. Delaney & P. Gazda



Evaluated by:

Marlene Delaney

Date: 10/1/2012



Philip Gazda

10/1/2012

Status: Y N U

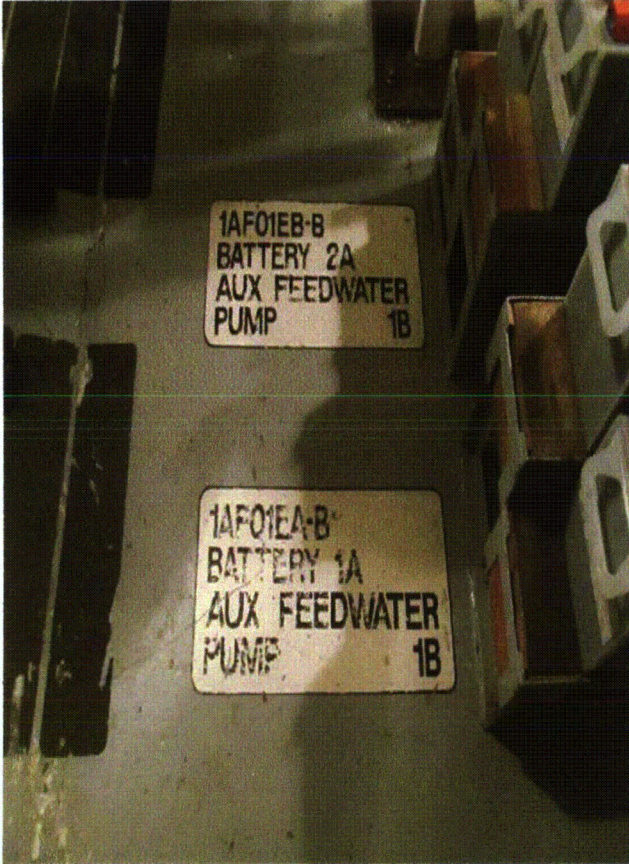
Seismic Walkdown Checklist (SWC)

Equipment ID No.: 1AF01EB-B

Equipment Class: (15) Batteries on Racks

Equipment Description: AUX FW PUMP 1B ENG AUX START RLY BATT 1 & 2

Photos



1AF01EB-B 7-17-12 Group 2 015



1AF01EB-B 7-17-12 Group 2 016

Status: Y N U

Seismic Walkdown Checklist (SWC)

Equipment ID No.: 1AF01EB-B

Equipment Class: (15) Batteries on Racks

Equipment Description: AUX FW PUMP 1B ENG AUX START RLY BATT 1 & 2



1AF01EB-B 7-17-12 Group 2 017

Status: Y N U

Seismic Walkdown Checklist (SWC)

Equipment ID No.: 1AF01PB

Equipment Class: (5) Horizontal Pumps

Equipment Description: DIESEL DRIVEN AUX FEED PUMP 1B_ASMBLY

Project: Braidwood 1 SWEL

Location (Bldg, Elev, Room/Area): Auxiliary, 383.00 ft, ALL

Manufacturer/Model:

Instructions for Completing Checklist

This checklist may be used to document the results of the Seismic Walkdown of an item of equipment on the SWEL. The space below each of the following questions may be used to record the results of judgments and findings. Additional space is provided at the end of this checklist for documenting other comments.

Anchorage

1. Is anchorage configuration verification required (i.e., is the item one of the 50% of SWEL items requiring such verification)? Yes

2. Is the anchorage free of bent, broken, missing or loose hardware? Yes

3. Is the anchorage free of corrosion that is more than mild surface oxidation? Yes

4. Is the anchorage free of visible cracks in the concrete near the anchors? Yes

5. Is the anchorage configuration consistent with plant documentation? (Note: This question only applies if the item is one of the 50% for which an anchorage configuration verification is required.)
Drawing M-1221 Sheet 3 Revision F Yes

6. Based on the above anchorage evaluations, is the anchorage free of potentially adverse seismic conditions? Yes

Status: Y N U

Seismic Walkdown Checklist (SWC)

Equipment ID No.: 1AF01PB

Equipment Class: (5) Horizontal Pumps

Equipment Description: DIESEL DRIVEN AUX FEED PUMP 1B_ASMBLY

Interaction Effects

7. Are soft targets free from impact by nearby equipment or structures? Yes
8. Are overhead equipment, distribution systems, ceiling tiles and lighting, and masonry block walls not likely to collapse onto the equipment? Yes
Block walls near equipment are seismically designed.
9. Do attached lines have adequate flexibility to avoid damage? Yes
10. Based on the above seismic interaction evaluations, is equipment free of potentially adverse seismic interaction effects? Yes

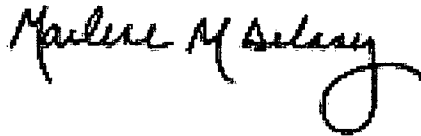
Other Adverse Conditions

11. Have you looked for and found no adverse seismic conditions that could adversely affect the safety functions of the equipment? Yes

Comments

Seismic walkdown performed week of 7/16/12 by M. Delaney & P. Gazda

Evaluated by:



Marlene Delaney

Date: 10/1/2012



Philip Gazda

10/1/2012

Status: Y N U

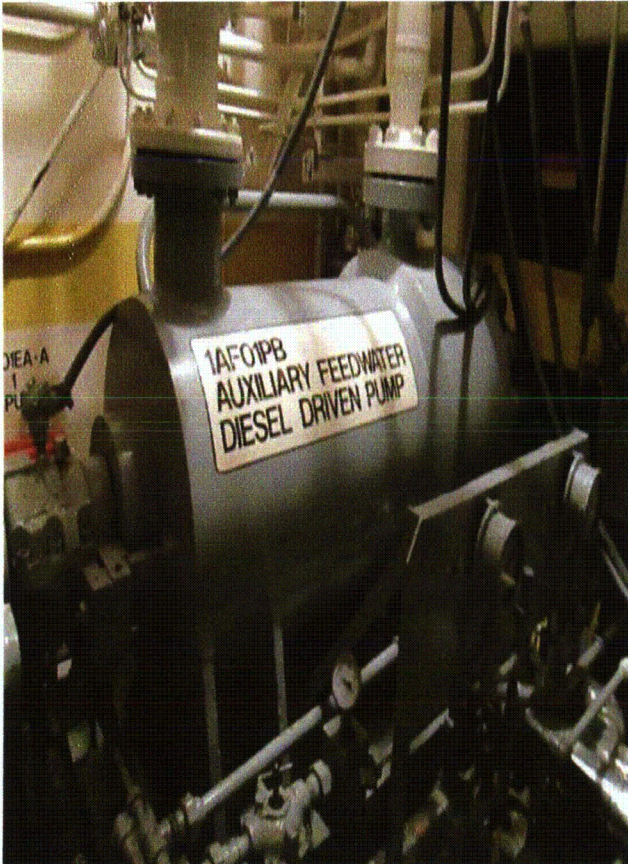
Seismic Walkdown Checklist (SWC)

Equipment ID No.: 1AF01PB

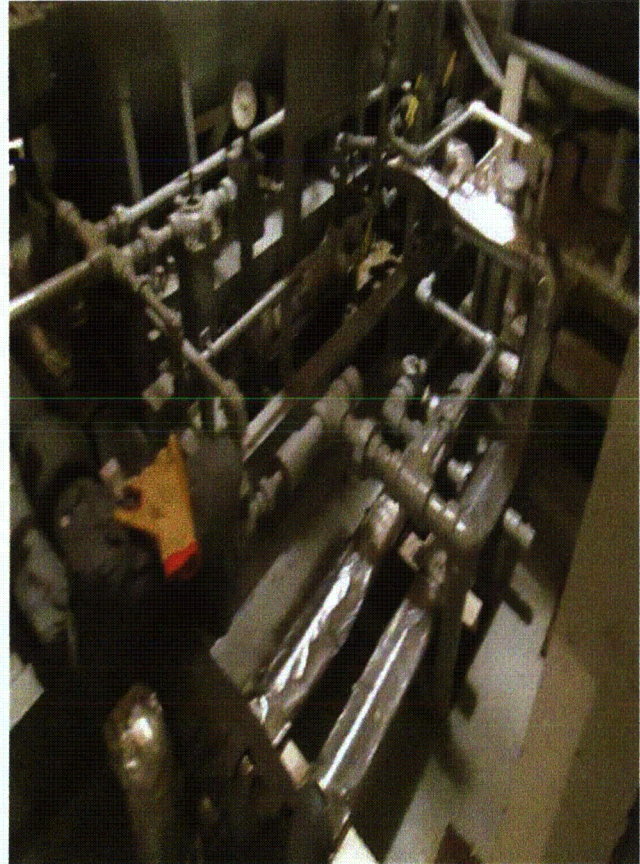
Equipment Class: (5) Horizontal Pumps

Equipment Description: DIESEL DRIVEN AUX FEED PUMP 1B_ASMBLY

Photos



1AF01PB 7-17-12 Group 2 024



1AF01PB 7-17-12 Group 2 025

Status: Y N U

Seismic Walkdown Checklist (SWC)

Equipment ID No.: 1AF01PB-A

Equipment Class: (5) Horizontal Pumps

Equipment Description: 1B AUX FEEDWATER PUMP AUX LUBE OIL PUMP

Project: Braidwood 1 SWEL

Location (Bldg, Elev, Room/Area): Auxiliary, 383.00 ft, ALL

Manufacturer/Model:

Instructions for Completing Checklist

This checklist may be used to document the results of the Seismic Walkdown of an item of equipment on the SWEL. The space below each of the following questions may be used to record the results of judgments and findings. Additional space is provided at the end of this checklist for documenting other comments.

Anchorage

1. Is anchorage configuration verification required (i.e., is the item one of the 50% of SWEL items requiring such verification)? No
attached to pump skid - no anchorage detail

2. Is the anchorage free of bent, broken, missing or loose hardware? Not Applicable

3. Is the anchorage free of corrosion that is more than mild surface oxidation? Not Applicable

4. Is the anchorage free of visible cracks in the concrete near the anchors? Not Applicable

5. Is the anchorage configuration consistent with plant documentation? (Note: This question only applies if the item is one of the 50% for which an anchorage configuration verification is required.) Not Applicable

6. Based on the above anchorage evaluations, is the anchorage free of potentially adverse seismic conditions? Yes
Well-anchored to skid.

Status: Y N U

Seismic Walkdown Checklist (SWC)

Equipment ID No.: 1AF01PB-A

Equipment Class: (5) Horizontal Pumps

Equipment Description: 1B AUX FEEDWATER PUMP AUX LUBE OIL PUMP

Interaction Effects

7. Are soft targets free from impact by nearby equipment or structures? Yes
8. Are overhead equipment, distribution systems, ceiling tiles and lighting, and masonry block walls not likely to collapse onto the equipment? Yes
9. Do attached lines have adequate flexibility to avoid damage? Yes
10. Based on the above seismic interaction evaluations, is equipment free of potentially adverse seismic interaction effects? Yes

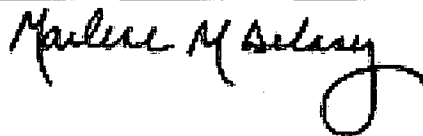
Other Adverse Conditions

11. Have you looked for and found no adverse seismic conditions that could adversely affect the safety functions of the equipment? Yes

Comments


Seismic walkdown performed week of 7/16/12 by M. Delaney & P. Gazda

Evaluated by:



Marlene Delaney

Date: 10/1/2012



Philip Gazda

10/1/2012

Status: Y N U

Seismic Walkdown Checklist (SWC)

Equipment ID No.: 1AF01PB-A

Equipment Class: (5) Horizontal Pumps

Equipment Description: 1B AUX FEEDWATER PUMP AUX LUBE OIL PUMP

Photos



1AF01PB-A 7-17-12 Group 2 026

Status: Y N U

Seismic Walkdown Checklist (SWC)

Equipment ID No.: 1AF01PB-K

Equipment Class: (5) Horizontal Pumps

Equipment Description: 1B DIESEL DRIVEN AUX FEED PUMP ENGINE

Project: Braidwood 1 SWEL

Location (Bldg, Elev, Room/Area): Auxiliary, 383.00 ft, ALL

Manufacturer/Model:

Instructions for Completing Checklist

This checklist may be used to document the results of the Seismic Walkdown of an item of equipment on the SWEL. The space below each of the following questions may be used to record the results of judgments and findings. Additional space is provided at the end of this checklist for documenting other comments.

Anchorage

1. Is anchorage configuration verification required (i.e., is the item one of the 50% of SWEL items requiring such verification)? Yes

2. Is the anchorage free of bent, broken, missing or loose hardware? Yes

3. Is the anchorage free of corrosion that is more than mild surface oxidation? Yes

4. Is the anchorage free of visible cracks in the concrete near the anchors? Yes

5. Is the anchorage configuration consistent with plant documentation? (Note: This question only applies if the item is one of the 50% for which an anchorage configuration verification is required.) Yes
Drawing M-1221 Sheet 3 Revision F

6. Based on the above anchorage evaluations, is the anchorage free of potentially adverse seismic conditions? Yes

Status: Y N U

Seismic Walkdown Checklist (SWC)

Equipment ID No.: 1AF01PB-K

Equipment Class: (5) Horizontal Pumps

Equipment Description: 1B DIESEL DRIVEN AUX FEED PUMP ENGINE

Interaction Effects

7. Are soft targets free from impact by nearby equipment or structures? Yes
8. Are overhead equipment, distribution systems, ceiling tiles and lighting, and masonry block walls not likely to collapse onto the equipment? Yes
9. Do attached lines have adequate flexibility to avoid damage? Yes
10. Based on the above seismic interaction evaluations, is equipment free of potentially adverse seismic interaction effects? Yes

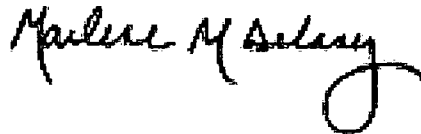
Other Adverse Conditions

11. Have you looked for and found no adverse seismic conditions that could adversely affect the safety functions of the equipment? Yes

Comments


Seismic walkdown performed week of 7/16/12 by M. Delaney & P. Gazda
See AWC 19 for discussion on site glass and fuel line

Evaluated by:



Marlene Delaney

Date: 10/1/2012



Philip Gazda

10/1/2012

Status: Y N U

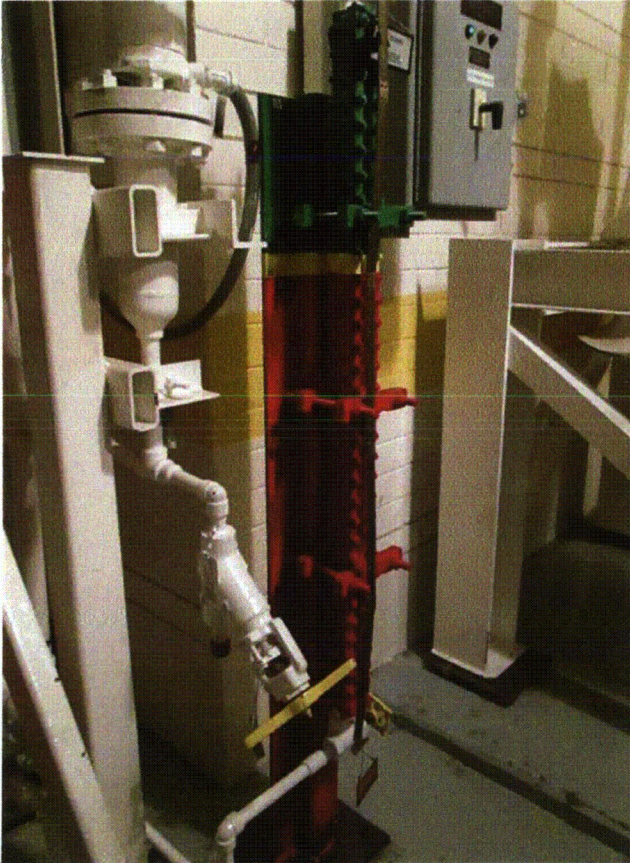
Seismic Walkdown Checklist (SWC)

Equipment ID No.: 1AF01PB-K

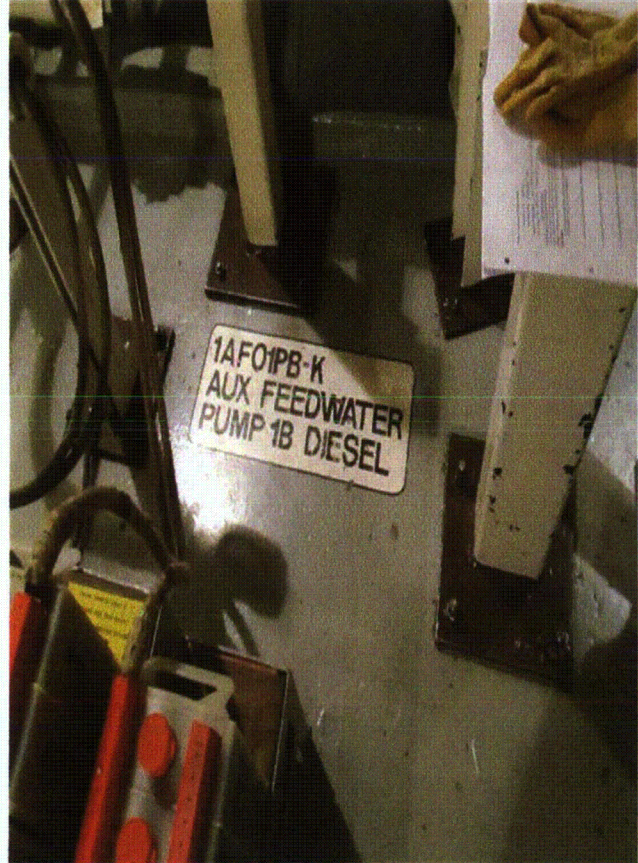
Equipment Class: (5) Horizontal Pumps

Equipment Description: 1B DIESEL DRIVEN AUX FEED PUMP ENGINE

Photos



1AF01PB-K (DO site Glass) 7-17-12 Group 2 039



1AF01PB-K 7-17-12 Group 2 018

Status: Y N U

Seismic Walkdown Checklist (SWC)

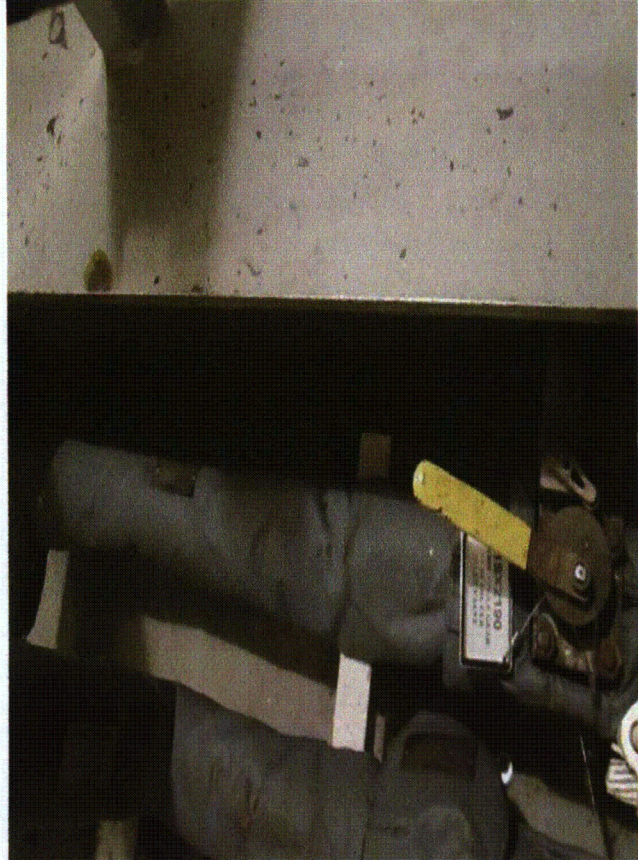
Equipment ID No.: 1AF01PB-K

Equipment Class: (5) Horizontal Pumps

Equipment Description: 1B DIESEL DRIVEN AUX FEED PUMP ENGINE



1AF01PB-K 7-17-12 Group 2 019



1AF01PB-K 7-17-12 Group 2 020

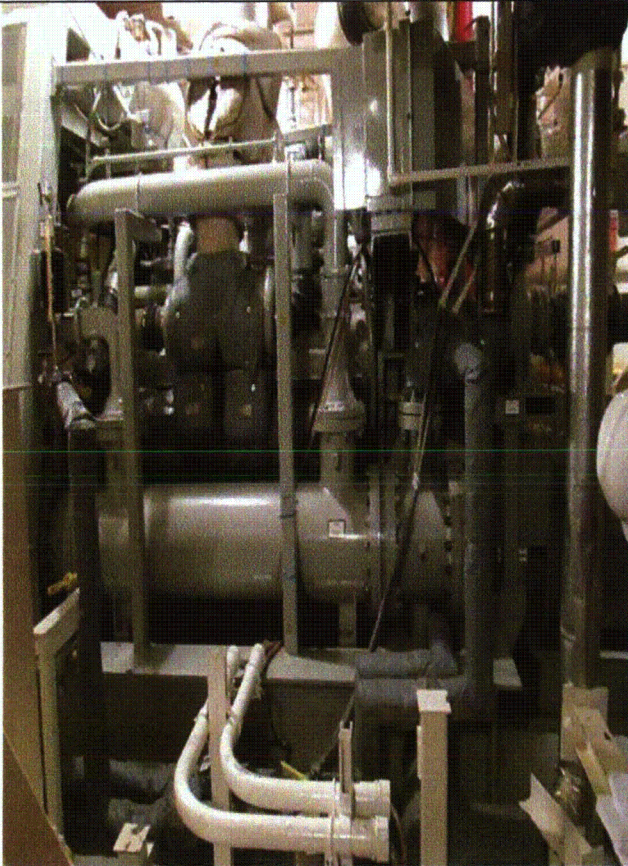
Status: Y N U

Seismic Walkdown Checklist (SWC)

Equipment ID No.: 1AF01PB-K

Equipment Class: (5) Horizontal Pumps

Equipment Description: 1B DIESEL DRIVEN AUX FEED PUMP ENGINE



1AF01PB-K 7-17-12 Group 2 021

Status: Y N U

Seismic Walkdown Checklist (SWC)

Equipment ID No.: 1AF024

Equipment Class: (7) Fluid-Operated Valves

Equipment Description: AF PP SX RECIRC VLV_ASMBLY; 3"

Project: Braidwood 1 SWEL

Location (Bldg, Elev, Room/Area): Auxiliary, 383.00 ft, ALL

Manufacturer/Model:

Instructions for Completing Checklist

This checklist may be used to document the results of the Seismic Walkdown of an item of equipment on the SWEL. The space below each of the following questions may be used to record the results of judgments and findings. Additional space is provided at the end of this checklist for documenting other comments.

Anchorage

1. Is anchorage configuration verification required (i.e., is the item one of the 50% of SWEL items requiring such verification)? No

2. Is the anchorage free of bent, broken, missing or loose hardware? Not Applicable

3. Is the anchorage free of corrosion that is more than mild surface oxidation? Not Applicable

4. Is the anchorage free of visible cracks in the concrete near the anchors? Not Applicable

5. Is the anchorage configuration consistent with plant documentation? (Note: This question only applies if the item is one of the 50% for which an anchorage configuration verification is required.) Not Applicable

6. Based on the above anchorage evaluations, is the anchorage free of potentially adverse seismic conditions? Yes

Status: Y N U

Seismic Walkdown Checklist (SWC)

Equipment ID No.: 1AF024

Equipment Class: (7) Fluid-Operated Valves

Equipment Description: AF PP SX RECIRC VLV_ASMBLY; 3"

Interaction Effects

7. Are soft targets free from impact by nearby equipment or structures? Yes
8. Are overhead equipment, distribution systems, ceiling tiles and lighting, and masonry block walls not likely to collapse onto the equipment? Yes
9. Do attached lines have adequate flexibility to avoid damage? Yes
10. Based on the above seismic interaction evaluations, is equipment free of potentially adverse seismic interaction effects? Yes

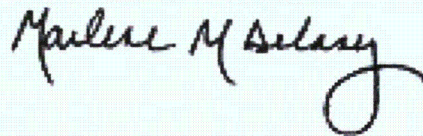
Other Adverse Conditions

11. Have you looked for and found no adverse seismic conditions that could adversely affect the safety functions of the equipment? Yes
Valve is robust

Comments

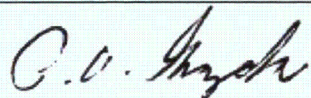
Seismic walkdown performed week of 7/16/12 by M. Delaney & P. Gazda

Evaluated by:



Marlene Delaney

Date: 10/1/2012



Philip Gazda

10/1/2012

Status: Y N U

Seismic Walkdown Checklist (SWC)

Equipment ID No.: 1AF024

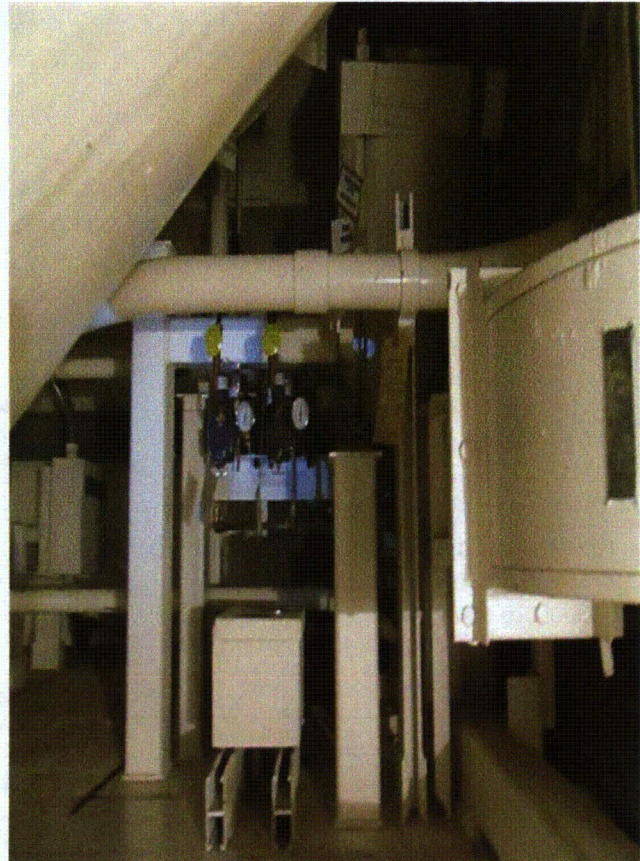
Equipment Class: (7) Fluid-Operated Valves

Equipment Description: AF PP SX RECIRC VLV_ASMBLY; 3"

Photos



1AF024 7-17-12 Group 2 030



1AF024 7-17-12 Group 2 031

Status: Y N U

Seismic Walkdown Checklist (SWC)

Equipment ID No.: 1AP11E

Equipment Class: (4) Transformers

Equipment Description: EQ 480V ESF UNIT SUB 131X TRANSFORMER 1AP086

Project: Braidwood 1 SWEL

Location (Bldg, Elev, Room/Area): Auxiliary, 426.00 ft, ALL

Manufacturer/Model:

Instructions for Completing Checklist

This checklist may be used to document the results of the Seismic Walkdown of an item of equipment on the SWEL. The space below each of the following questions may be used to record the results of judgments and findings. Additional space is provided at the end of this checklist for documenting other comments.

Anchorage

1. Is anchorage configuration verification required (i.e., is the item one of the 50% of SWEL items requiring such verification)? Yes

2. Is the anchorage free of bent, broken, missing or loose hardware? Yes

3. Is the anchorage free of corrosion that is more than mild surface oxidation? Yes

4. Is the anchorage free of visible cracks in the concrete near the anchors? Yes

5. Is the anchorage configuration consistent with plant documentation? (Note: This question only applies if the item is one of the 50% for which an anchorage configuration verification is required.)
Drawing 20E-0-3391F Revision AN Detail 121 Yes

6. Based on the above anchorage evaluations, is the anchorage free of potentially adverse seismic conditions? Yes

Status: Y N U

Seismic Walkdown Checklist (SWC)

Equipment ID No.: 1AP11E

Equipment Class: (4) Transformers

Equipment Description: EQ 480V ESF UNIT SUB 131X TRANSFORMER 1AP086

Interaction Effects

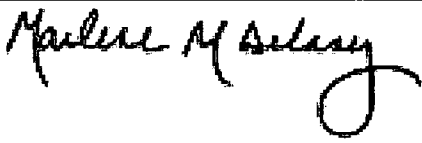
7. Are soft targets free from impact by nearby equipment or structures? Yes
8. Are overhead equipment, distribution systems, ceiling tiles and lighting, and masonry block walls not likely to collapse onto the equipment? Yes
9. Do attached lines have adequate flexibility to avoid damage? Yes
10. Based on the above seismic interaction evaluations, is equipment free of potentially adverse seismic interaction effects? Yes

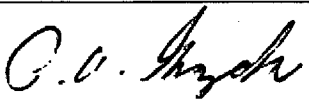
Other Adverse Conditions

11. Have you looked for and found no adverse seismic conditions that could adversely affect the safety functions of the equipment? Yes

Comments

Seismic walkdown performed week of 7/16/12 by M. Delaney & P. Gazda

Evaluated by:  Marlene Delaney Date: 10/1/2012

 Philip Gazda 10/1/2012

Status: Y N U

Seismic Walkdown Checklist (SWC)

Equipment ID No.: 1AP11E

Equipment Class: (4) Transformers

Equipment Description: EQ 480V ESF UNIT SUB 131X TRANSFORMER 1AP086

Photos

None.

Status: Y N U

Seismic Walkdown Checklist (SWC)

Equipment ID No.: 1AP21E

Equipment Class: (1) Motor Control Centers

Equipment Description: 480V AUX BLDG ESF MCC 131X1 XFORMER

Project: Braidwood 1 SWEL

Location (Bldg, Elev, Room/Area): Auxiliary, 364.00 ft, ALL

Manufacturer/Model:

Instructions for Completing Checklist

This checklist may be used to document the results of the Seismic Walkdown of an item of equipment on the SWEL. The space below each of the following questions may be used to record the results of judgments and findings. Additional space is provided at the end of this checklist for documenting other comments.

Anchorage

1. Is anchorage configuration verification required (i.e., is the item one of the 50% of SWEL items requiring such verification)? Yes

2. Is the anchorage free of bent, broken, missing or loose hardware? Yes

3. Is the anchorage free of corrosion that is more than mild surface oxidation? Yes

4. Is the anchorage free of visible cracks in the concrete near the anchors? Yes

5. Is the anchorage configuration consistent with plant documentation? (Note: This question only applies if the item is one of the 50% for which an anchorage configuration verification is required.)
Drawing 20E-0-3391C Revision BM Mounting Detail for 480V Motor Control Centers Yes

6. Based on the above anchorage evaluations, is the anchorage free of potentially adverse seismic conditions? Yes

Status: Y N U

Seismic Walkdown Checklist (SWC)

Equipment ID No.: 1AP21E

Equipment Class: (1) Motor Control Centers

Equipment Description: 480V AUX BLDG ESF MCC 131X1 XFORMER

Interaction Effects

7. Are soft targets free from impact by nearby equipment or structures? Yes
8. Are overhead equipment, distribution systems, ceiling tiles and lighting, and masonry block walls not likely to collapse onto the equipment? Yes
9. Do attached lines have adequate flexibility to avoid damage? Yes
10. Based on the above seismic interaction evaluations, is equipment free of potentially adverse seismic interaction effects? Yes

Other Adverse Conditions

11. Have you looked for and found no adverse seismic conditions that could adversely affect the safety functions of the equipment? Yes

Comments

Seismic walkdown performed week of 7/16/12 by M. Delaney & P. Gazda

Evaluated by:

Marlene M Delaney

Marlene Delaney

Date: 10/1/2012

P. O. Gazda

Philip Gazda

10/1/2012

Status: Y N U

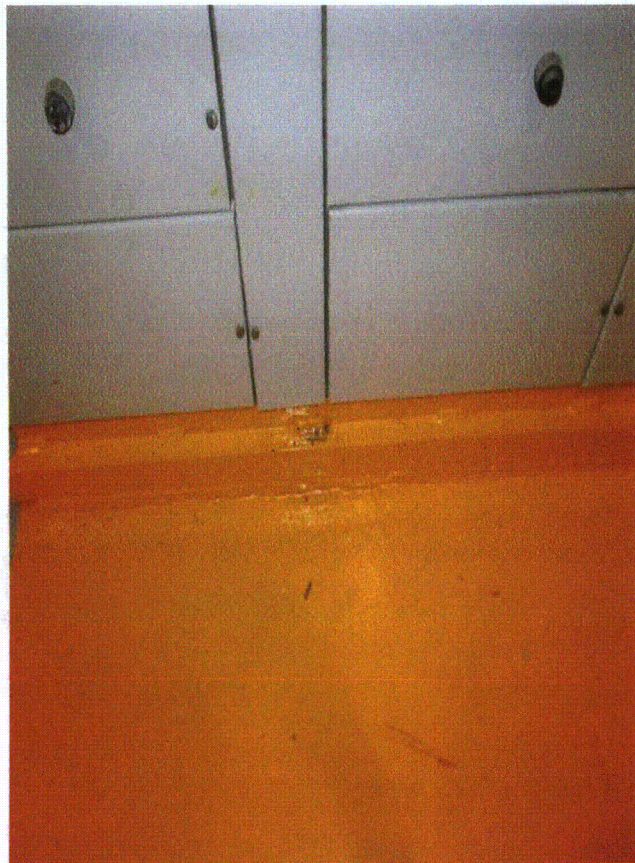
Seismic Walkdown Checklist (SWC)

Equipment ID No.: 1AP21E

Equipment Class: (1) Motor Control Centers

Equipment Description: 480V AUX BLDG ESF MCC 131X1 XFORMER

Photos



1AP21E 7-19-12 026



1AP21E7-19-12 024

Status: Y N U

Seismic Walkdown Checklist (SWC)

Equipment ID No.: 1AP21E

Equipment Class: (1) Motor Control Centers

Equipment Description: 480V AUX BLDG ESF MCC 131X1 XFORMER



1AP21E7-19-12 025

Status: Y N U

Seismic Walkdown Checklist (SWC)

Equipment ID No.: 1AP22E

Equipment Class: (1) Motor Control Centers

Equipment Description: 480V AUX BLDG ESF MCC 131X3 ASMBLY

Project: Braidwood 1 SWEL

Location (Bldg, Elev, Room/Area): Auxiliary, 383.00 ft, ALL

Manufacturer/Model:

Instructions for Completing Checklist

This checklist may be used to document the results of the Seismic Walkdown of an item of equipment on the SWEL. The space below each of the following questions may be used to record the results of judgments and findings. Additional space is provided at the end of this checklist for documenting other comments.

Anchorage

1. Is anchorage configuration verification required (i.e., is the item one of the 50% of SWEL items requiring such verification)? Yes

2. Is the anchorage free of bent, broken, missing or loose hardware? Yes

3. Is the anchorage free of corrosion that is more than mild surface oxidation? Yes

4. Is the anchorage free of visible cracks in the concrete near the anchors? Yes

5. Is the anchorage configuration consistent with plant documentation? (Note: This question only applies if the item is one of the 50% for which an anchorage configuration verification is required.) Yes
Drawing 20E-0-3391C Revision BM Mounting detail for 480V Motor Control Centers
Weld exceeds drawing

6. Based on the above anchorage evaluations, is the anchorage free of potentially adverse seismic conditions? Yes

Status: Y N U

Seismic Walkdown Checklist (SWC)

Equipment ID No.: 1AP22E

Equipment Class: (1) Motor Control Centers

Equipment Description: 480V AUX BLDG ESF MCC 131X3 ASMBLY

Interaction Effects

7. Are soft targets free from impact by nearby equipment or structures? Yes
8. Are overhead equipment, distribution systems, ceiling tiles and lighting, and masonry block walls not likely to collapse onto the equipment? Yes
Seismic block walls
Well-secured battery on wall
9. Do attached lines have adequate flexibility to avoid damage? Yes
10. Based on the above seismic interaction evaluations, is equipment free of potentially adverse seismic interaction effects? Yes

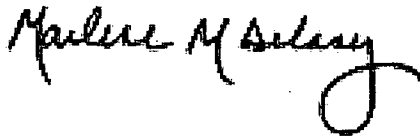
Other Adverse Conditions

11. Have you looked for and found no adverse seismic conditions that could adversely affect the safety functions of the equipment? Yes

Comments

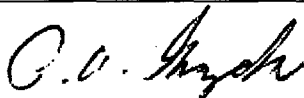
Seismic walkdown performed week of 7/16/12 by M. Delaney & P. Gazda

Evaluated by:



Marlene Delaney

Date: 10/1/2012



Philip Gazda

10/1/2012

Status: Y N U

Seismic Walkdown Checklist (SWC)

Equipment ID No.: 1AP22E

Equipment Class: (1) Motor Control Centers

Equipment Description: 480V AUX BLDG ESF MCC 131X3 ASMBLY

Photos



1AP22E 7-18-12 001



1AP22E 7-18-12 002

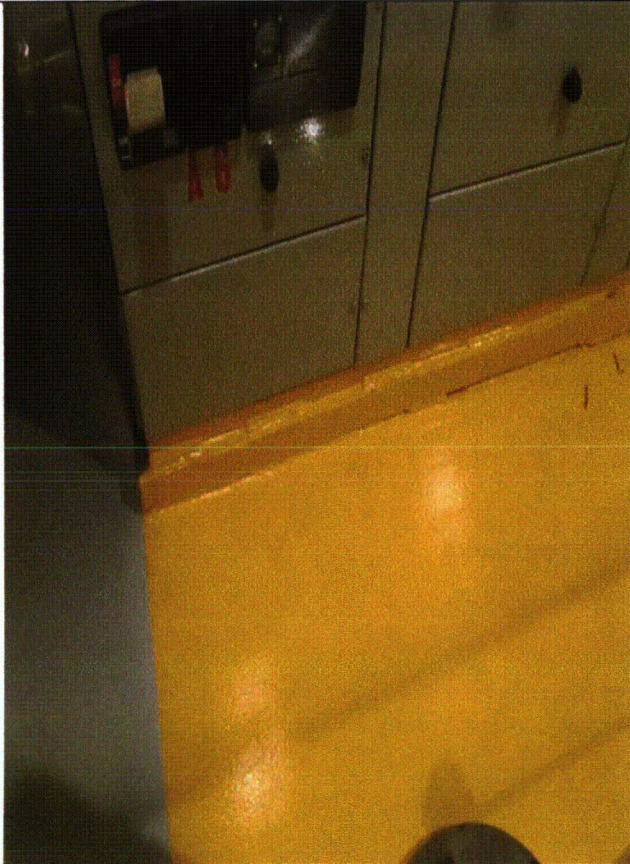
Status: Y N U

Seismic Walkdown Checklist (SWC)

Equipment ID No.: 1AP22E

Equipment Class: (1) Motor Control Centers

Equipment Description: 480V AUX BLDG ESF MCC 131X3 ASMBLY



1AP22E 7-18-12 003



1AP22E 7-18-12 004

Status: Y N U

Seismic Walkdown Checklist (SWC)

Equipment ID No.: 1AP24E

Equipment Class: (1) Motor Control Centers

Equipment Description: EQ 480 V AUX BLDG ESF MCC 132X3 ASMBLY

Project: Braidwood 1 SWEL

Location (Bldg, Elev, Room/Area): Auxiliary, 383.00 ft, ALL

Manufacturer/Model:

Instructions for Completing Checklist

This checklist may be used to document the results of the Seismic Walkdown of an item of equipment on the SWEL. The space below each of the following questions may be used to record the results of judgments and findings. Additional space is provided at the end of this checklist for documenting other comments.

Anchorage

1. Is anchorage configuration verification required (i.e., is the item one of the 50% of SWEL items requiring such verification)? Yes

2. Is the anchorage free of bent, broken, missing or loose hardware? Yes

3. Is the anchorage free of corrosion that is more than mild surface oxidation? Yes

4. Is the anchorage free of visible cracks in the concrete near the anchors? Yes

5. Is the anchorage configuration consistent with plant documentation? (Note: This question only applies if the item is one of the 50% for which an anchorage configuration verification is required.) Yes
Drawing 20E-0-3391C Revision BM Mounting Detail for 480V Motor Control Center

6. Based on the above anchorage evaluations, is the anchorage free of potentially adverse seismic conditions? Yes

Status: Y N U

Seismic Walkdown Checklist (SWC)

Equipment ID No.: 1AP24E

Equipment Class: (1) Motor Control Centers

Equipment Description: EQ 480 V AUX BLDG ESF MCC 132X3 ASMBLY

Interaction Effects

7. Are soft targets free from impact by nearby equipment or structures? Yes
8. Are overhead equipment, distribution systems, ceiling tiles and lighting, and masonry block walls not likely to collapse onto the equipment? Yes
*Scaffolding on north and south side of MCC is well-secured.
Battery well-mounted.*
9. Do attached lines have adequate flexibility to avoid damage? Yes
10. Based on the above seismic interaction evaluations, is equipment free of potentially adverse seismic interaction effects? Yes

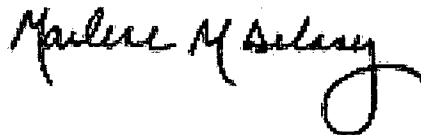
Other Adverse Conditions

11. Have you looked for and found no adverse seismic conditions that could adversely affect the safety functions of the equipment? Yes

Comments

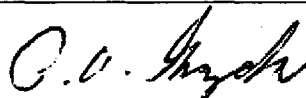
Seismic walkdown performed week of 7/16/12 by M. Delaney & P. Gazda

Evaluated by:



Marlene Delaney

Date: 10/1/2012



Philip Gazda

10/1/2012

Status: Y N U

Seismic Walkdown Checklist (SWC)

Equipment ID No.: 1AP24E

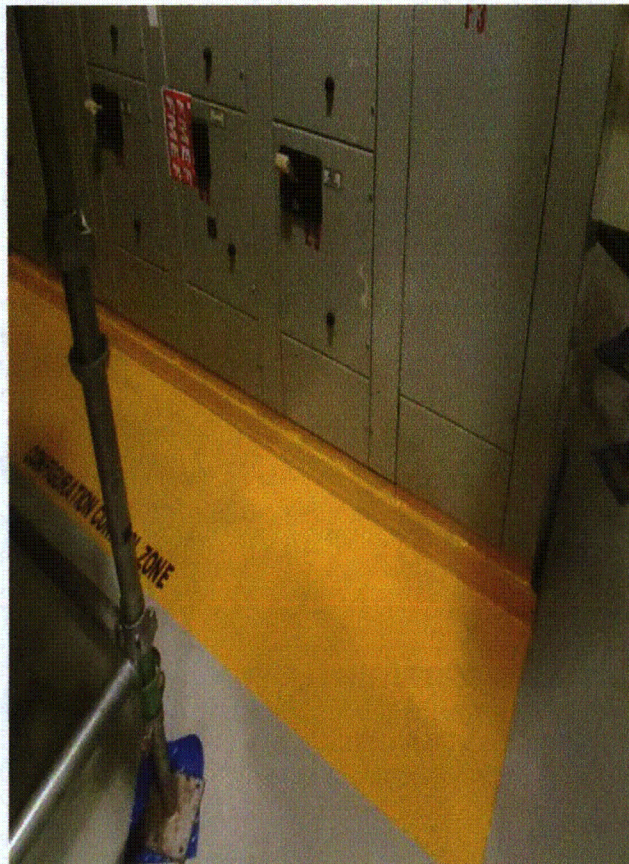
Equipment Class: (1) Motor Control Centers

Equipment Description: EQ 480 V AUX BLDG ESF MCC 132X3 ASMBLY

Photos



1AP24E 7-18-12 005



1AP24E 7-18-12 006

Status: Y N U

Seismic Walkdown Checklist (SWC)

Equipment ID No.: 1AP27E

Equipment Class: (1) Motor Control Centers

Equipment Description: EQ 480V AUX BLDG MCC 132X2 ASMBLY

Project: Braidwood 1 SWEL

Location (Bldg, Elev, Room/Area): Auxiliary, 426.00 ft, ALL

Manufacturer/Model:

Instructions for Completing Checklist

This checklist may be used to document the results of the Seismic Walkdown of an item of equipment on the SWEL. The space below each of the following questions may be used to record the results of judgments and findings. Additional space is provided at the end of this checklist for documenting other comments.

Anchorage

1. Is anchorage configuration verification required (i.e., is the item one of the 50% of SWEL items requiring such verification)? Yes

2. Is the anchorage free of bent, broken, missing or loose hardware? Yes

3. Is the anchorage free of corrosion that is more than mild surface oxidation? Yes

4. Is the anchorage free of visible cracks in the concrete near the anchors? Yes

5. Is the anchorage configuration consistent with plant documentation? (Note: This question only applies if the item is one of the 50% for which an anchorage configuration verification is required.) Yes
Drawing 20E-0-3391C Revision BM

6. Based on the above anchorage evaluations, is the anchorage free of potentially adverse seismic conditions? Yes

Status: Y N U

Seismic Walkdown Checklist (SWC)

Equipment ID No.: 1AP27E

Equipment Class: (1) Motor Control Centers

Equipment Description: EQ 480V AUX BLDG MCC 132X2 ASMBLY

Interaction Effects

7. Are soft targets free from impact by nearby equipment or structures? Yes
Cabinet is attached at top to adjacent cabinet 1AP47E at front and back.
8. Are overhead equipment, distribution systems, ceiling tiles and lighting, and masonry block walls not likely to collapse onto the equipment? Yes
9. Do attached lines have adequate flexibility to avoid damage? Yes
10. Based on the above seismic interaction evaluations, is equipment free of potentially adverse seismic interaction effects? Yes

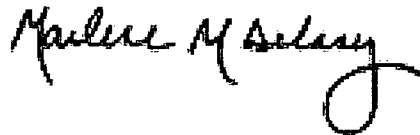
Other Adverse Conditions

11. Have you looked for and found no adverse seismic conditions that could adversely affect the safety functions of the equipment? Yes

Comments

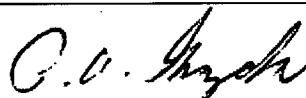
Seismic walkdown performed week of 7/16/12 by M. Delaney & P. Gazda

Evaluated by:



Marlene Delaney

Date: 10/1/2012



Philip Gazda

10/1/2012

Status: Y N U

Seismic Walkdown Checklist (SWC)

Equipment ID No.: 1AP27E

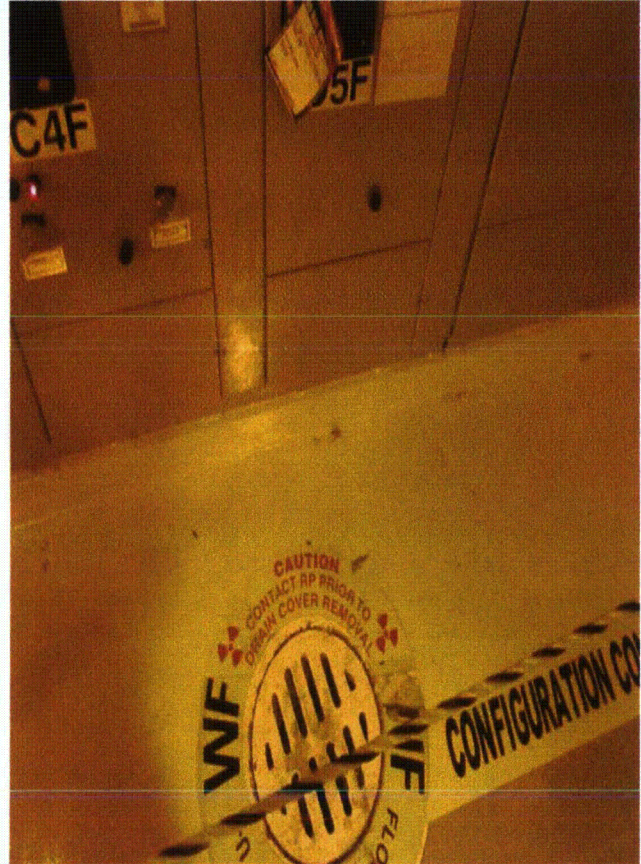
Equipment Class: (1) Motor Control Centers

Equipment Description: EQ 480V AUX BLDG MCC 132X2 ASMBLY

Photos



1AP27E 7-17-12 Group 2 001



1AP27E 7-17-12 Group 2 003

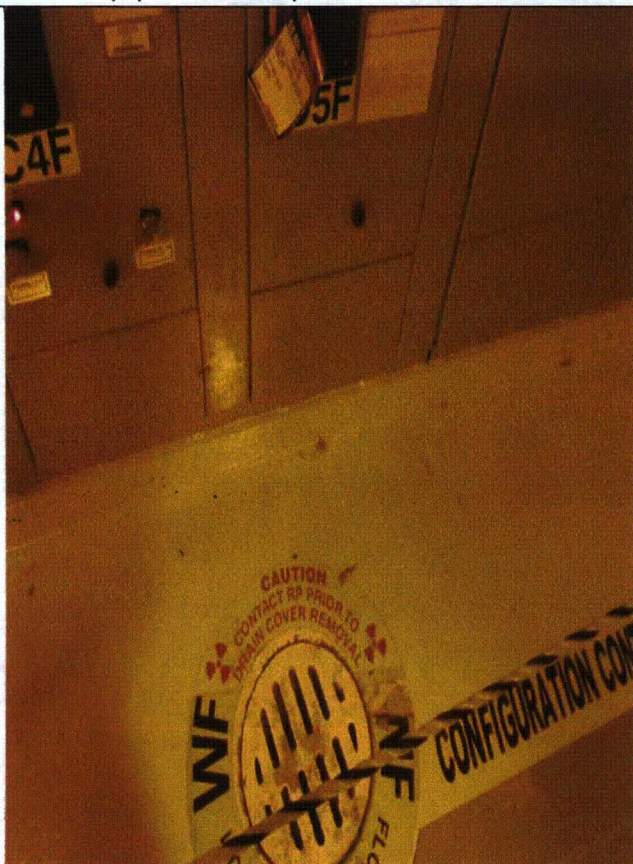
Status: Y N U

Seismic Walkdown Checklist (SWC)

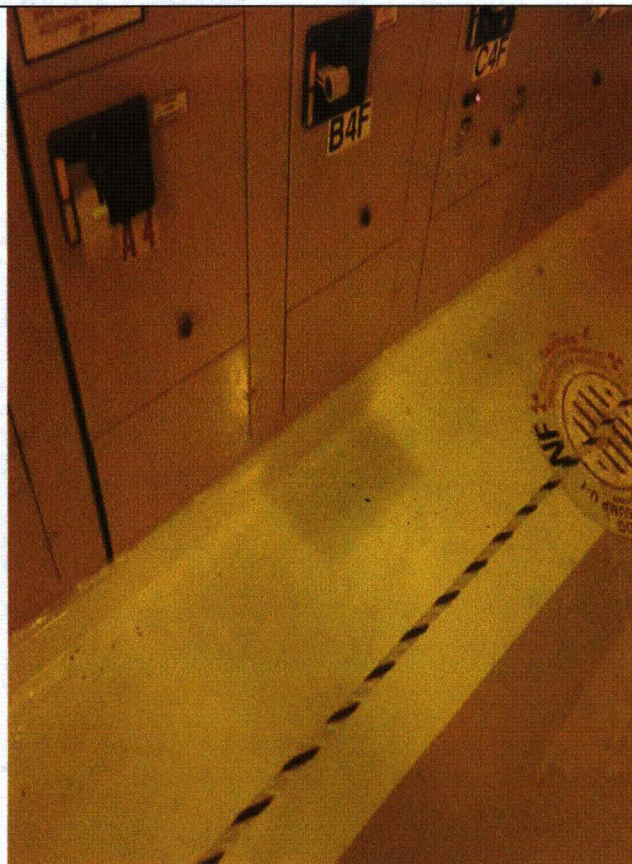
Equipment ID No.: 1AP27E

Equipment Class: (1) Motor Control Centers

Equipment Description: EQ 480V AUX BLDG MCC 132X2 ASMBLY



1AP27E 7-17-12 Group 2 004



1AP27E 7-17-12 Group 2 005

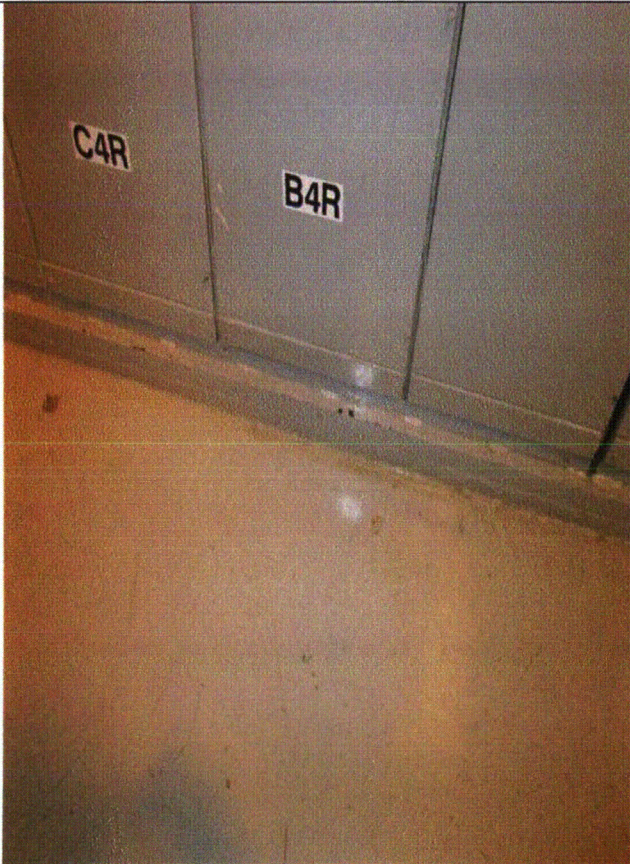
Status: Y N U

Seismic Walkdown Checklist (SWC)

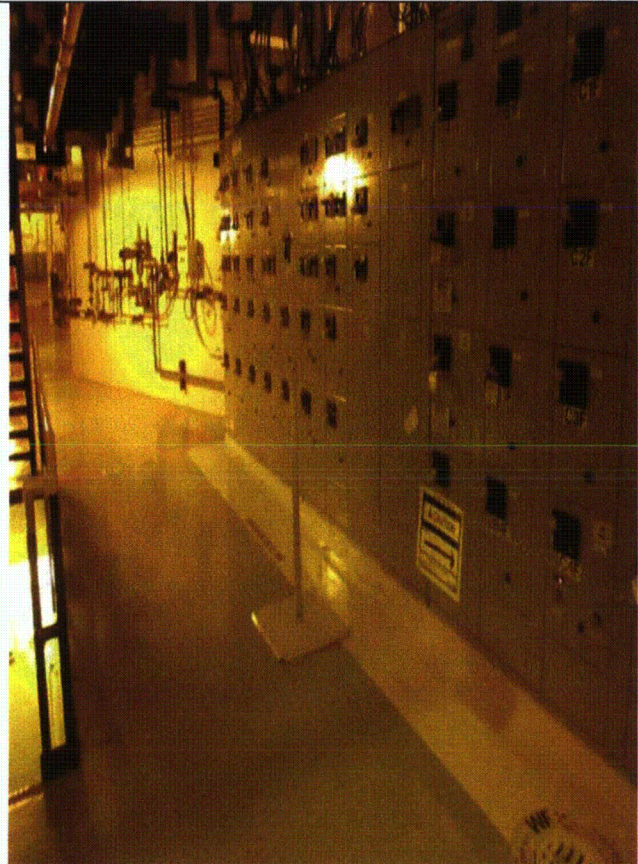
Equipment ID No.: 1AP27E

Equipment Class: (1) Motor Control Centers

Equipment Description: EQ 480V AUX BLDG MCC 132X2 ASMBLY



1AP27E 7-17-12 Group 2 006



1AP27E 7-17-12 Group 2 007

Status: Y N U

Seismic Walkdown Checklist (SWC)

Equipment ID No.: 1AP27E

Equipment Class: (1) Motor Control Centers

Equipment Description: EQ 480V AUX BLDG MCC 132X2 ASMBLY



1AP27E 7-17-12 Group 2 008



1AP27E 7-17-12 Group 2 009

Status: Y N U

Seismic Walkdown Checklist (SWC)

Equipment ID No.: 1AP38E

Equipment Class: (1) Motor Control Centers

Equipment Description: ASSY - 480V AUX BLDG MCC 133X1A

Project: Braidwood 1 SWEL

Location (Bldg, Elev, Room/Area): Auxiliary, 346.00 ft, ALL

Manufacturer/Model:

Instructions for Completing Checklist

This checklist may be used to document the results of the Seismic Walkdown of an item of equipment on the SWEL. The space below each of the following questions may be used to record the results of judgments and findings. Additional space is provided at the end of this checklist for documenting other comments.

Anchorage

1. Is anchorage configuration verification required (i.e., is the item one of the 50% of SWEL items requiring such verification)? Yes

2. Is the anchorage free of bent, broken, missing or loose hardware? Yes

3. Is the anchorage free of corrosion that is more than mild surface oxidation? Yes

4. Is the anchorage free of visible cracks in the concrete near the anchors? Yes

5. Is the anchorage configuration consistent with plant documentation? (Note: This question only applies if the item is one of the 50% for which an anchorage configuration verification is required.) Yes
Drawing 20E-0-3391C Revision BM
Weld exceeds drawing requirements

6. Based on the above anchorage evaluations, is the anchorage free of potentially adverse seismic conditions? Yes

Status: Y N U

Seismic Walkdown Checklist (SWC)

Equipment ID No.: 1AP38E

Equipment Class: (1) Motor Control Centers

Equipment Description: ASSY - 480V AUX BLDG MCC 133X1A

Interaction Effects

7. Are soft targets free from impact by nearby equipment or structures? Yes
8. Are overhead equipment, distribution systems, ceiling tiles and lighting, and masonry block walls not likely to collapse onto the equipment? Yes
Seismic block walls
Well-supported fire protection piping
9. Do attached lines have adequate flexibility to avoid damage? Yes
10. Based on the above seismic interaction evaluations, is equipment free of potentially adverse seismic interaction effects? Yes

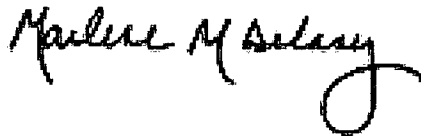
Other Adverse Conditions

11. Have you looked for and found no adverse seismic conditions that could adversely affect the safety functions of the equipment? Yes

Comments

Seismic walkdown performed week of 7/16/12 by M. Delaney & P. Gazda

Evaluated by:



Marlene Delaney

Date: 10/1/2012



Philip Gazda

10/1/2012

Status: Y N U

Seismic Walkdown Checklist (SWC)

Equipment ID No.: 1AP38E

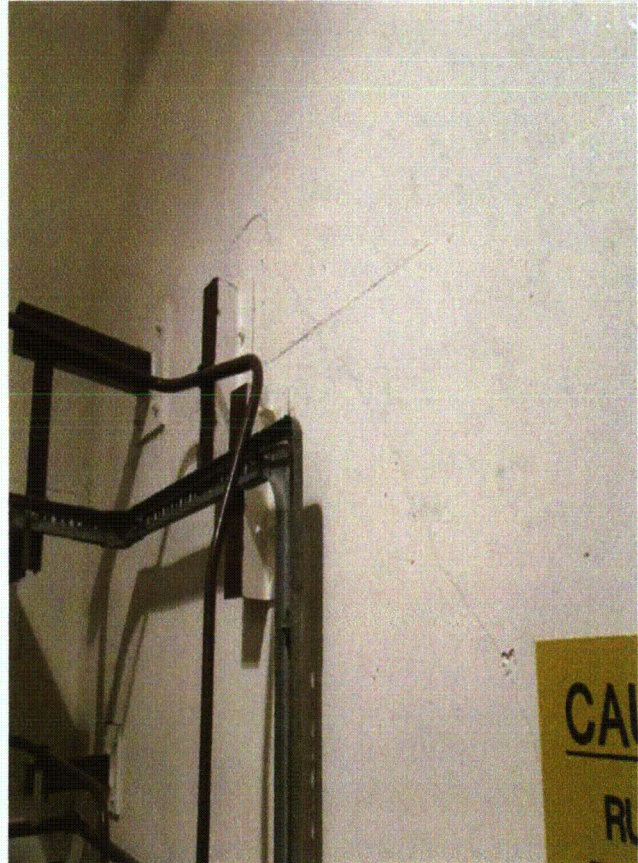
Equipment Class: (1) Motor Control Centers

Equipment Description: ASSY - 480V AUX BLDG MCC 133X1A

Photos



1AP38E 7-18-12 026



1AP38E 7-18-12 027

Status: Y N U

Seismic Walkdown Checklist (SWC)

Equipment ID No.: 1AP38E

Equipment Class: (1) Motor Control Centers

Equipment Description: ASSY - 480V AUX BLDG MCC 133X1A



1AP38E 7-18-12 028



1AP38E 7-18-12 029

Status: Y N U

Seismic Walkdown Checklist (SWC)

Equipment ID No.: 1AP38E

Equipment Class: (1) Motor Control Centers

Equipment Description: ASSY - 480V AUX BLDG MCC 133X1A



1AP38E 7-18-12 030



1AP38E 7-18-12 031

Status: Y N U

Seismic Walkdown Checklist (SWC)

Equipment ID No.: 1CC01PB

Equipment Class: (5) Horizontal Pumps

Equipment Description: 1B PUMP, COMPONENT COOLING 12X14-18 M66-3 ASMBLY

Project: Braidwood 1 SWEL

Location (Bldg, Elev, Room/Area): Auxiliary, 364.00 ft, ALL

Manufacturer/Model:

Instructions for Completing Checklist

This checklist may be used to document the results of the Seismic Walkdown of an item of equipment on the SWEL. The space below each of the following questions may be used to record the results of judgments and findings. Additional space is provided at the end of this checklist for documenting other comments.

Anchorage

1. Is anchorage configuration verification required (i.e., is the item one of the 50% of SWEL items requiring such verification)? Yes

2. Is the anchorage free of bent, broken, missing or loose hardware? Yes

3. Is the anchorage free of corrosion that is more than mild surface oxidation? Yes

4. Is the anchorage free of visible cracks in the concrete near the anchors? Yes

5. Is the anchorage configuration consistent with plant documentation? (Note: This question only applies if the item is one of the 50% for which an anchorage configuration verification is required.)
Drawing M-1220 Sheet 4 Revision U Component Cooling Pump (see Plan M-1220-1) Yes

6. Based on the above anchorage evaluations, is the anchorage free of potentially adverse seismic conditions? Yes

Status: Y N U

Seismic Walkdown Checklist (SWC)

Equipment ID No.: 1CC01PB

Equipment Class: (5) Horizontal Pumps

Equipment Description: 1B PUMP, COMPONENT COOLING 12X14-18 M66-3 ASMBLY

Interaction Effects

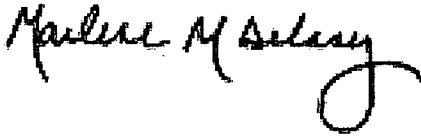
7. Are soft targets free from impact by nearby equipment or structures? Yes
8. Are overhead equipment, distribution systems, ceiling tiles and lighting, and masonry block walls not likely to collapse onto the equipment? Yes
*Fire protection piping and other piping above equipment is well-supported
No overhead hazards to site bulbs*
9. Do attached lines have adequate flexibility to avoid damage? Yes
10. Based on the above seismic interaction evaluations, is equipment free of potentially adverse seismic interaction effects? Yes

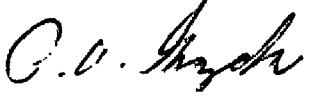
Other Adverse Conditions

11. Have you looked for and found no adverse seismic conditions that could adversely affect the safety functions of the equipment? Yes
*See Area Walk-by Checklist 24 for additional notes on concrete degradation
and pipe clamp.*

Comments

Seismic walkdown performed week of 7/16/12 by M. Delaney & P. Gazda

Evaluated by:  Marlene Delaney Date: 10/1/2012

 Philip Gazda 10/1/2012

Status: Y N U

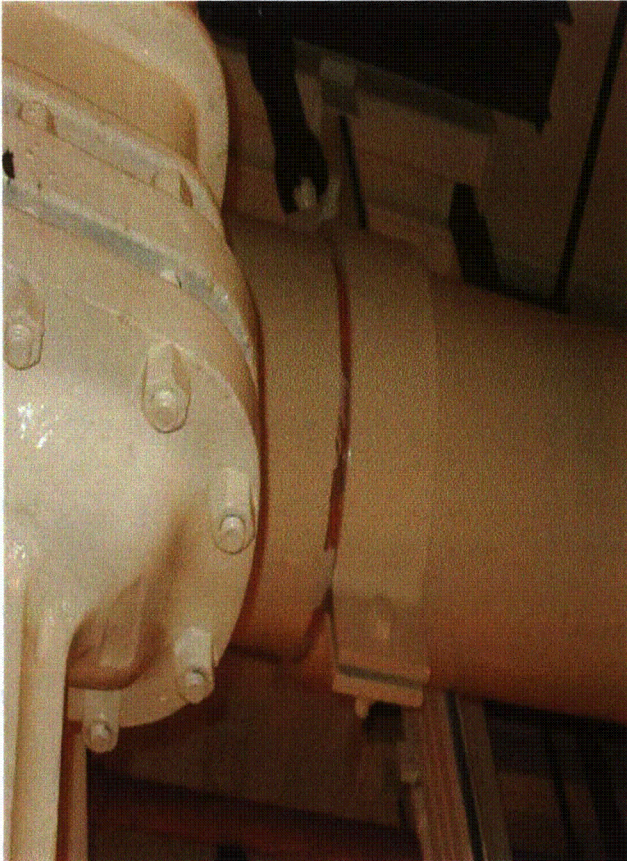
Seismic Walkdown Checklist (SWC)

Equipment ID No.: 1CC01PB

Equipment Class: (5) Horizontal Pumps

Equipment Description: 1B PUMP, COMPONENT COOLING 12X14-18 M66-3 ASMBLY

Photos



1CC01PB (6695 - displaced pipe collar) 7-18-12 021



1CC01PB (AWB degraded concrete) 7-18-12 020

Status: Y N U

Seismic Walkdown Checklist (SWC)

Equipment ID No.: 1CC01PB

Equipment Class: (5) Horizontal Pumps

Equipment Description: 1B PUMP, COMPONENT COOLING 12X14-18 M66-3 ASMBLY



1CC01PB 7-18-12 017



1CC01PB 7-18-12 018

Status: Y N U

Seismic Walkdown Checklist (SWC)

Equipment ID No.: 1CC01PB

Equipment Class: (5) Horizontal Pumps

Equipment Description: 1B PUMP, COMPONENT COOLING 12X14-18 M66-3 ASMBLY



1CC01PB 7-18-12 019

Status: Y N U

Seismic Walkdown Checklist (SWC)

Equipment ID No.: 1CC685

Equipment Class: (8) Motor-Operated and Solenoid-Operated Valves

Equipment Description: CC FROM RC PMPS THERMAL BARRIER ISOL VLV ASMBLY; 3"

Project: Braidwood 1 SWEL

Location (Bldg, Elev, Room/Area): Auxiliary, 401.00 ft, ALL

Manufacturer/Model:

Instructions for Completing Checklist

This checklist may be used to document the results of the Seismic Walkdown of an item of equipment on the SWEL. The space below each of the following questions may be used to record the results of judgments and findings. Additional space is provided at the end of this checklist for documenting other comments.

Anchorage

- | | |
|--|----------------|
| 1. Is anchorage configuration verification required (i.e., is the item one of the 50% of SWEL items requiring such verification)? | No |
| 2. Is the anchorage free of bent, broken, missing or loose hardware? | Not Applicable |
| 3. Is the anchorage free of corrosion that is more than mild surface oxidation? | Not Applicable |
| 4. Is the anchorage free of visible cracks in the concrete near the anchors? | Not Applicable |
| 5. Is the anchorage configuration consistent with plant documentation? (Note: This question only applies if the item is one of the 50% for which an anchorage configuration verification is required.) | Not Applicable |
| 6. Based on the above anchorage evaluations, is the anchorage free of potentially adverse seismic conditions? | Yes |

Status: Y N U

Seismic Walkdown Checklist (SWC)

Equipment ID No.: 1CC685

Equipment Class: (8) Motor-Operated and Solenoid-Operated Valves

Equipment Description: CC FROM RC PMPS THERMAL BARRIER ISOL VLV ASMBLY; 3"

Interaction Effects

7. Are soft targets free from impact by nearby equipment or structures? Yes
8. Are overhead equipment, distribution systems, ceiling tiles and lighting, and masonry block walls not likely to collapse onto the equipment? Yes
9. Do attached lines have adequate flexibility to avoid damage? Yes
10. Based on the above seismic interaction evaluations, is equipment free of potentially adverse seismic interaction effects? Yes

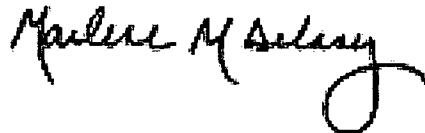
Other Adverse Conditions

11. Have you looked for and found no adverse seismic conditions that could adversely affect the safety functions of the equipment? Yes

Comments

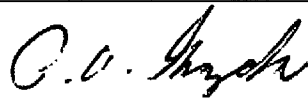
Seismic walkdown performed week of 7/16/12 by M. Delaney & P. Gazda

Evaluated by:



Marlene Delaney

Date: 10/1/2012



Philip Gazda

10/1/2012

Status: Y N U

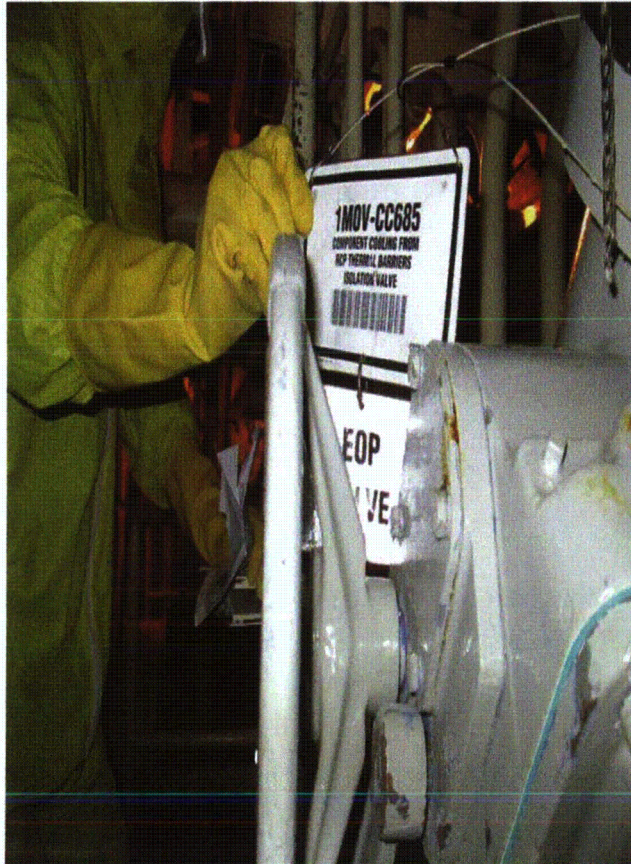
Seismic Walkdown Checklist (SWC)

Equipment ID No.: 1CC685

Equipment Class: (8) Motor-Operated and Solenoid-Operated Valves

Equipment Description: CC FROM RC PMPS THERMAL BARRIER ISOL VLV ASMBLY; 3"

Photos



1CC685 7-19-12 Group 2 003



1CC685 7-19-12 Group 2 004

Status: Y N U

Seismic Walkdown Checklist (SWC)

Equipment ID No.: 1CV01PB

Equipment Class: (5) Horizontal Pumps

Equipment Description: PUMP,1B CENTRIFUGAL CHARGING ASMBLY

Project: Braidwood 1 SWEL

Location (Bldg, Elev, Room/Area): Auxiliary, 364.00 ft, ALL

Manufacturer/Model:

Instructions for Completing Checklist

This checklist may be used to document the results of the Seismic Walkdown of an item of equipment on the SWEL. The space below each of the following questions may be used to record the results of judgments and findings. Additional space is provided at the end of this checklist for documenting other comments.

Anchorage

1. Is anchorage configuration verification required (i.e., is the item one of the 50% of SWEL items requiring such verification)? Yes

2. Is the anchorage free of bent, broken, missing or loose hardware? Yes

3. Is the anchorage free of corrosion that is more than mild surface oxidation? Yes

4. Is the anchorage free of visible cracks in the concrete near the anchors? Yes

5. Is the anchorage configuration consistent with plant documentation? (Note: This question only applies if the item is one of the 50% for which an anchorage configuration verification is required.) Yes
Drawing M-1220 Sheet 3 Revision U Detail 82

6. Based on the above anchorage evaluations, is the anchorage free of potentially adverse seismic conditions? Yes

Status: Y N U

Seismic Walkdown Checklist (SWC)

Equipment ID No.: 1CV01PB

Equipment Class: (5) Horizontal Pumps

Equipment Description: PUMP, 1B CENTRIFUGAL CHARGING ASMBLY

Interaction Effects

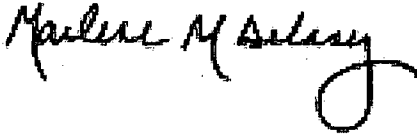
7. Are soft targets free from impact by nearby equipment or structures? Yes
8. Are overhead equipment, distribution systems, ceiling tiles and lighting, and masonry block walls not likely to collapse onto the equipment? Yes
Seismic block walls
9. Do attached lines have adequate flexibility to avoid damage? Yes
10. Based on the above seismic interaction evaluations, is equipment free of potentially adverse seismic interaction effects? Yes

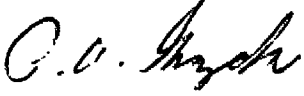
Other Adverse Conditions

11. Have you looked for and found no adverse seismic conditions that could adversely affect the safety functions of the equipment? Yes

Comments

Seismic walkdown performed week of 7/16/12 by M. Delaney & P. Gazda

Evaluated by:  Marlene Delaney Date: 10/1/2012

 Philip Gazda 10/1/2012

Status: Y N U

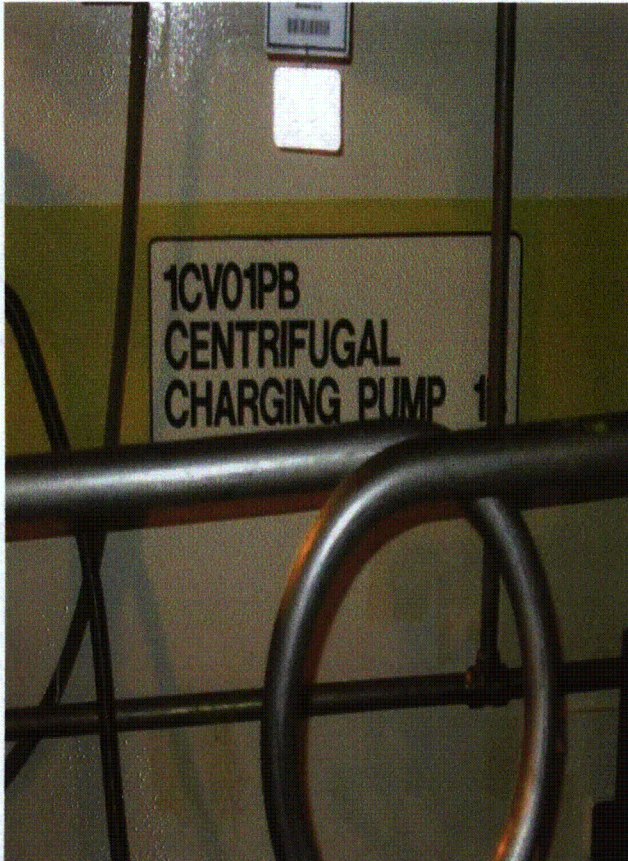
Seismic Walkdown Checklist (SWC)

Equipment ID No.: 1CV01PB

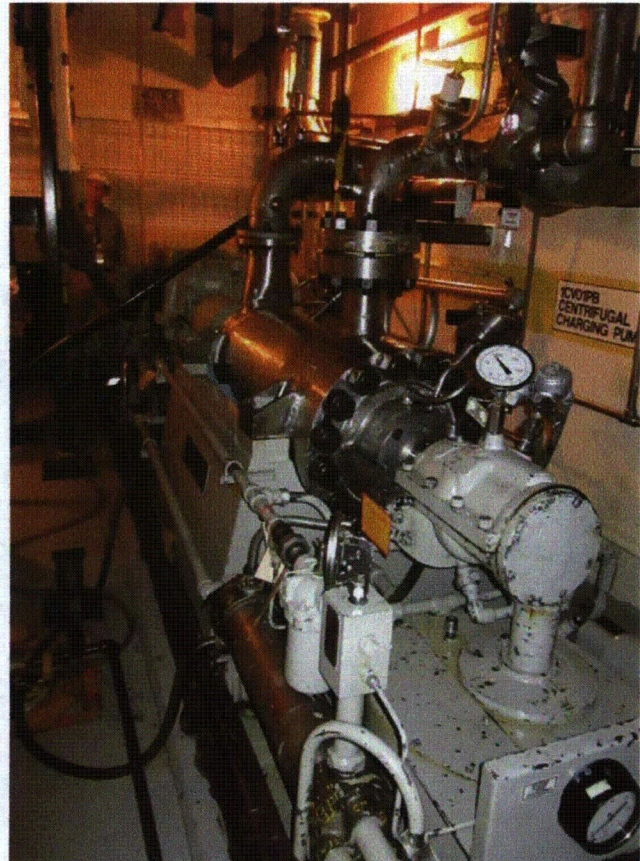
Equipment Class: (5) Horizontal Pumps

Equipment Description: PUMP,1B CENTRIFUGAL CHARGING ASMBLY

Photos



1CV01PB 7-19-12 019



1CV01PB 7-19-12 020

Status: Y N U

Seismic Walkdown Checklist (SWC)

Equipment ID No.: 1CV01PB

Equipment Class: (5) Horizontal Pumps

Equipment Description: PUMP,1B CENTRIFUGAL CHARGING ASMBLY



1CV01PB 7-19-12 021