

Status:  Y  N  U

**Seismic Walkdown Checklist (SWC)**

Equipment ID No.: 2SX169A

Equipment Class: (7) Fluid-Operated Valves

Equipment Description: DG 2A SX VLV ASMBLY

Project: Braidwood 2 SWEL

Location (Bldg, Elev, Room/Area): Auxiliary, 401.00 ft, ALL

Manufacturer/Model: .

**Instructions for Completing Checklist**

This checklist may be used to document the results of the Seismic Walkdown of an item of equipment on the SWEL. The space below each of the following questions may be used to record the results of judgments and findings. Additional space is provided at the end of this checklist for documenting other comments.

**Anchorage**

1. Is anchorage configuration verification required (i.e., is the item one of the 50% of SWEL items requiring such verification)? No
  
2. Is the anchorage free of bent, broken, missing or loose hardware? Not Applicable
  
3. Is the anchorage free of corrosion that is more than mild surface oxidation? Not Applicable
  
4. Is the anchorage free of visible cracks in the concrete near the anchors? Not Applicable
  
5. Is the anchorage configuration consistent with plant documentation? (Note: This question only applies if the item is one of the 50% for which an anchorage configuration verification is required.) Not Applicable
  
6. Based on the above anchorage evaluations, is the anchorage free of potentially adverse seismic conditions? Yes

Status:  Y  N  U

**Seismic Walkdown Checklist (SWC)**

Equipment ID No.: 2SX169A

Equipment Class: (7) Fluid-Operated Valves

Equipment Description: DG 2A SX VLV ASMBLY

**Interaction Effects**

7. Are soft targets free from impact by nearby equipment or structures? Yes
8. Are overhead equipment, distribution systems, ceiling tiles and lighting, and masonry block walls not likely to collapse onto the equipment? Yes  
*Overhead tube track is well-supported*
9. Do attached lines have adequate flexibility to avoid damage? Yes
10. Based on the above seismic interaction evaluations, is equipment free of potentially adverse seismic interaction effects? Yes

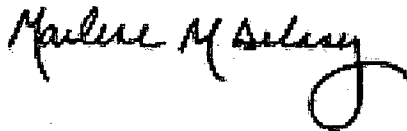
**Other Adverse Conditions**

11. Have you looked for and found no adverse seismic conditions that could adversely affect the safety functions of the equipment? Yes

**Comments**

Seismic walkdown team M. Delaney & P. Gazda 7/31/12 pm

Evaluated by:



Marlene Delaney

Date: 10/1/2012



Philip Gazda

10/1/2012



Status:  Y  N  U

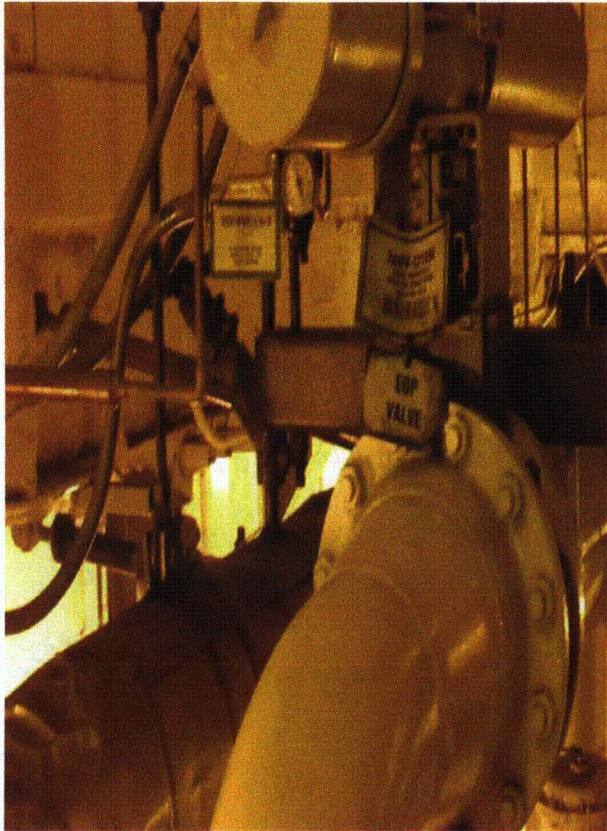
**Seismic Walkdown Checklist (SWC)**

Equipment ID No.: 2SX169A

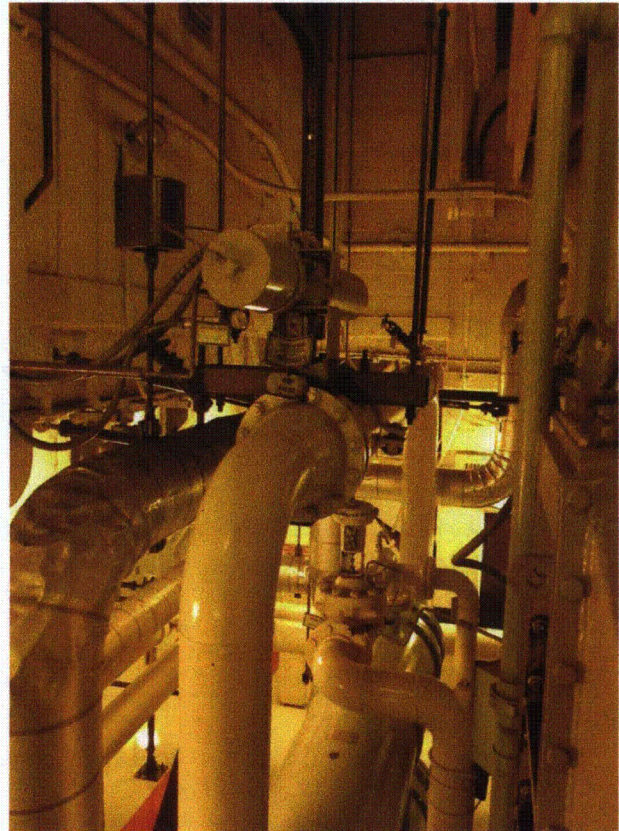
Equipment Class: (7) Fluid-Operated Valves

Equipment Description: DG 2A SX VLV ASMBLY

**Photos**



2SX169A 7-31-12 088



2SX169A 7-31-12 089

Status:  Y  N  U

**Seismic Walkdown Checklist (SWC)**

Equipment ID No.: 2TE-0604

Equipment Class: (19) Temperature Sensors

Equipment Description: RHR LP 2A RETURN RTD

Project: Braidwood 2 SWEL

Location (Bldg, Elev, Room/Area): Auxiliary, 364.00 ft, ALL

Manufacturer/Model:

**Instructions for Completing Checklist**

This checklist may be used to document the results of the Seismic Walkdown of an item of equipment on the SWEL. The space below each of the following questions may be used to record the results of judgments and findings. Additional space is provided at the end of this checklist for documenting other comments.

**Anchorage**

1. Is anchorage configuration verification required (i.e., is the item one of the 50% of SWEL items requiring such verification)? No
  
2. Is the anchorage free of bent, broken, missing or loose hardware? Not Applicable
  
3. Is the anchorage free of corrosion that is more than mild surface oxidation? Not Applicable
  
4. Is the anchorage free of visible cracks in the concrete near the anchors? Not Applicable
  
5. Is the anchorage configuration consistent with plant documentation? (Note: This question only applies if the item is one of the 50% for which an anchorage configuration verification is required.) Not Applicable
  
6. Based on the above anchorage evaluations, is the anchorage free of potentially adverse seismic conditions? Yes



Status:  Y  N  U

**Seismic Walkdown Checklist (SWC)**

Equipment ID No.: 2TE-0604

Equipment Class: (19) Temperature Sensors

Equipment Description: RHR LP 2A RETURN RTD

**Interaction Effects**

7. Are soft targets free from impact by nearby equipment or structures? Yes  
*Adequate clearance from aux steel*
8. Are overhead equipment, distribution systems, ceiling tiles and lighting, and masonry block walls not likely to collapse onto the equipment? Yes
9. Do attached lines have adequate flexibility to avoid damage? Yes
10. Based on the above seismic interaction evaluations, is equipment free of potentially adverse seismic interaction effects? Yes

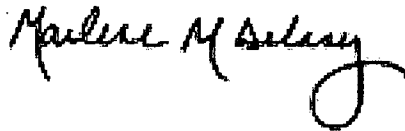
**Other Adverse Conditions**

11. Have you looked for and found no adverse seismic conditions that could adversely affect the safety functions of the equipment? Yes

**Comments**

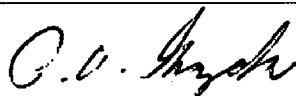
Seismic walkdown team M. Delaney & P. Gazda 7/30/12 am

Evaluated by:



Marlene Delaney

Date: 10/1/2012



Philip Gazda

10/1/2012

Status:  Y  N  U

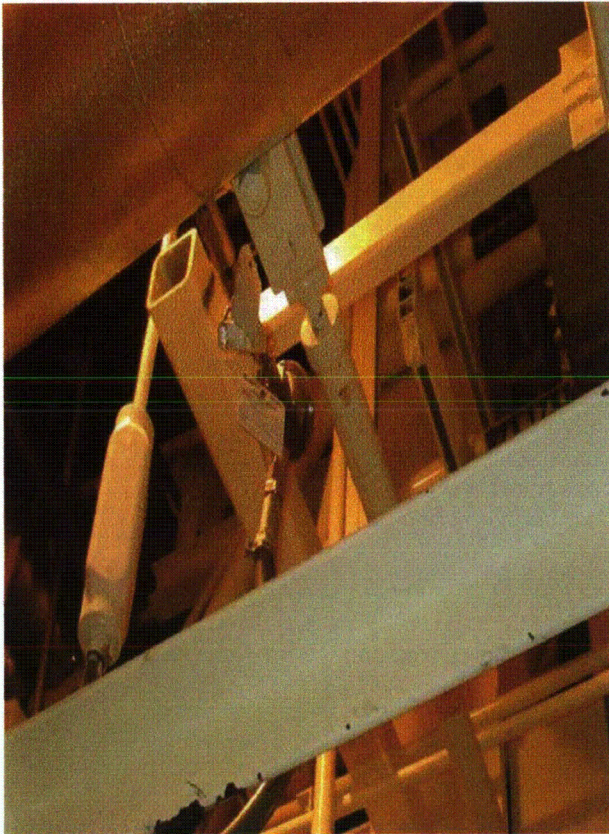
**Seismic Walkdown Checklist (SWC)**

Equipment ID No.: 2TE-0604

Equipment Class: (19) Temperature Sensors

Equipment Description: RHR LP 2A RETURN RTD

**Photos**



2TE-0604 7-30-12 AM 038

Status:  Y  N  U

**Seismic Walkdown Checklist (SWC)**

Equipment ID No.: 2VA01J

Equipment Class: (20) Instrumentation and Control Panels and Cabinets

Equipment Description: ESS SERV WATER PMP 1A CUB COOLER LOCAL PNL

Project: Braidwood 2 SWEL

Location (Bldg, Elev, Room/Area): Auxiliary, 330.00 ft, ALL

Manufacturer/Model:

**Instructions for Completing Checklist**

This checklist may be used to document the results of the Seismic Walkdown of an item of equipment on the SWEL. The space below each of the following questions may be used to record the results of judgments and findings. Additional space is provided at the end of this checklist for documenting other comments.

**Anchorage**

1. Is anchorage configuration verification required (i.e., is the item one of the 50% of SWEL items requiring such verification)? Yes
  
2. Is the anchorage free of bent, broken, missing or loose hardware? Yes
  
3. Is the anchorage free of corrosion that is more than mild surface oxidation? Yes
  
4. Is the anchorage free of visible cracks in the concrete near the anchors? Yes
  
5. Is the anchorage configuration consistent with plant documentation? (Note: This question only applies if the item is one of the 50% for which an anchorage configuration verification is required.) Yes  
*Drawing 20E-0-3391K Revision AF Detail No 157*
  
6. Based on the above anchorage evaluations, is the anchorage free of potentially adverse seismic conditions? Yes



Status:  Y  N  U

**Seismic Walkdown Checklist (SWC)**

Equipment ID No.: 2VA01J

Equipment Class: (20) Instrumentation and Control Panels and Cabinets

Equipment Description: ESS SERV WATER PMP 1A CUB COOLER LOCAL PNL

**Interaction Effects**

7. Are soft targets free from impact by nearby equipment or structures? Yes
8. Are overhead equipment, distribution systems, ceiling tiles and lighting, and masonry block walls not likely to collapse onto the equipment? Yes  
*Overhead HVAC is well-supported*
9. Do attached lines have adequate flexibility to avoid damage? Yes
10. Based on the above seismic interaction evaluations, is equipment free of potentially adverse seismic interaction effects? Yes

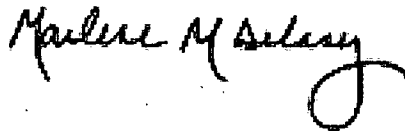
**Other Adverse Conditions**

11. Have you looked for and found no adverse seismic conditions that could adversely affect the safety functions of the equipment? Yes

**Comments**

Seismic walkdown team M. Delaney & P. Gazda 8/1/12 pm

Evaluated by:



Marlene Delaney

Date: 10/1/2012



Philip Gazda

10/1/2012

Status:  Y  N  U

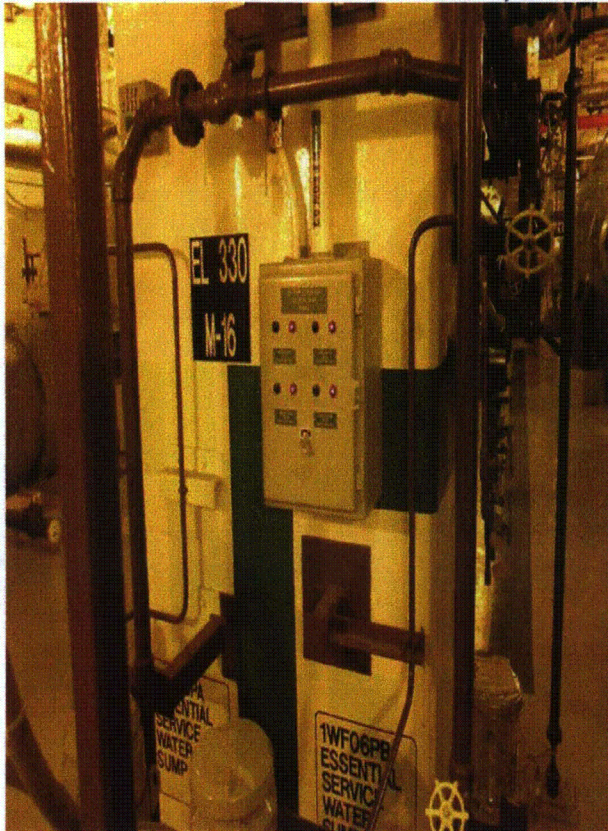
**Seismic Walkdown Checklist (SWC)**

Equipment ID No.: 2VA01J

Equipment Class: (20) Instrumentation and Control Panels and Cabinets

Equipment Description: ESS SERV WATER PMP 1A CUB COOLER LOCAL PNL

**Photos**



2VA01J 8-1-12 PM 012

Status:  Y  N  U

**Seismic Walkdown Checklist (SWC)**

Equipment ID No.: 2VA01SA

Equipment Class: (5) Horizontal Pumps

Equipment Description: COOLER ESSENTIAL SERV WATER PUMP 95-10

Project: Braidwood 2 SWEL

Location (Bldg, Elev, Room/Area): Auxiliary, 330.00 ft, ALL

Manufacturer/Model:

**Instructions for Completing Checklist**

This checklist may be used to document the results of the Seismic Walkdown of an item of equipment on the SWEL. The space below each of the following questions may be used to record the results of judgments and findings. Additional space is provided at the end of this checklist for documenting other comments.

**Anchorage**

1. Is anchorage configuration verification required (i.e., is the item one of the 50% of SWEL items requiring such verification)? No
  
2. Is the anchorage free of bent, broken, missing or loose hardware? Yes
  
3. Is the anchorage free of corrosion that is more than mild surface oxidation? Yes
  
4. Is the anchorage free of visible cracks in the concrete near the anchors? Yes
  
5. Is the anchorage configuration consistent with plant documentation? (Note: This question only applies if the item is one of the 50% for which an anchorage configuration verification is required.) Not Applicable
  
6. Based on the above anchorage evaluations, is the anchorage free of potentially adverse seismic conditions? Yes  
*Well-anchored*



Status:  Y  N  U

**Seismic Walkdown Checklist (SWC)**

Equipment ID No.: 2VA01SA

Equipment Class: (5) Horizontal Pumps

Equipment Description: COOLER ESSENTIAL SERV WATER PUMP 95-10

**Interaction Effects**

7. Are soft targets free from impact by nearby equipment or structures? Yes
8. Are overhead equipment, distribution systems, ceiling tiles and lighting, and masonry block walls not likely to collapse onto the equipment? Yes
9. Do attached lines have adequate flexibility to avoid damage? Yes
10. Based on the above seismic interaction evaluations, is equipment free of potentially adverse seismic interaction effects? Yes

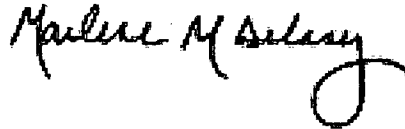
**Other Adverse Conditions**

11. Have you looked for and found no adverse seismic conditions that could adversely affect the safety functions of the equipment? Yes

**Comments**

Seismic walkdown team M. Delaney & P. Gazda 8/1/12 pm

Evaluated by:



Marlene Delaney

Date: 10/1/2012



Philip Gazda

10/1/2012

Status:  Y  N  U

**Seismic Walkdown Checklist (SWC)**

Equipment ID No.: 2VA01SA

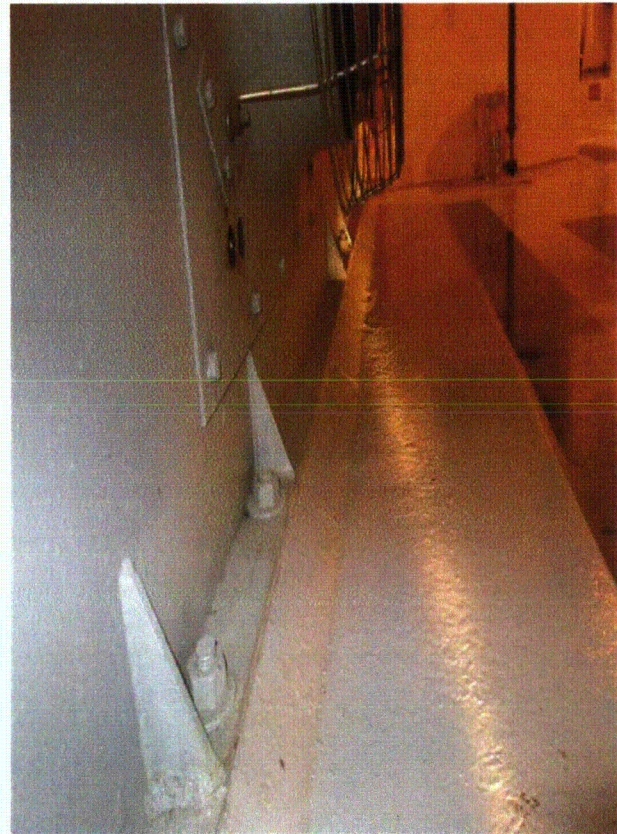
Equipment Class: (5) Horizontal Pumps

Equipment Description: COOLER ESSENTIAL SERV WATER PUMP 95-10

**Photos**



2VA01SA 8-1-12 PM 013



2VA01SA 8-1-12 PM 014

Status:  Y  N  U

**Seismic Walkdown Checklist (SWC)**

Equipment ID No.: 2VA02SA

Equipment Class: (10) Air Handlers

Equipment Description: 2A RHR PUMP ROOM CUB CLR ASMBLY

Project: Braidwood 2 SWEL

Location (Bldg, Elev, Room/Area): Auxiliary, 346.00 ft, ALL

Manufacturer/Model:

**Instructions for Completing Checklist**

This checklist may be used to document the results of the Seismic Walkdown of an item of equipment on the SWEL. The space below each of the following questions may be used to record the results of judgments and findings. Additional space is provided at the end of this checklist for documenting other comments.

**Anchorage**

1. Is anchorage configuration verification required (i.e., is the item one of the 50% of SWEL items requiring such verification)? Yes
  
2. Is the anchorage free of bent, broken, missing or loose hardware? Yes  
*Broken bolt as per Drawing M-1219 Sheet 3 Revision AE*
  
3. Is the anchorage free of corrosion that is more than mild surface oxidation? Yes
  
4. Is the anchorage free of visible cracks in the concrete near the anchors? Yes
  
5. Is the anchorage configuration consistent with plant documentation? (Note: This question only applies if the item is one of the 50% for which an anchorage configuration verification is required.) Yes
  
6. Based on the above anchorage evaluations, is the anchorage free of potentially adverse seismic conditions? Yes  
*Drawing M-1219 Sheet 3 Revision AE*



Status:  Y  N  U

**Seismic Walkdown Checklist (SWC)**

Equipment ID No.: 2VA02SA

Equipment Class: (10) Air Handlers

Equipment Description: 2A RHR PUMP ROOM CUB CLR ASMBLY

**Interaction Effects**

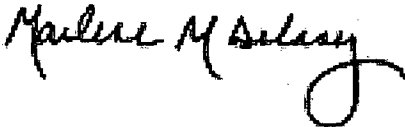
7. Are soft targets free from impact by nearby equipment or structures? Yes
8. Are overhead equipment, distribution systems, ceiling tiles and lighting, and masonry block walls not likely to collapse onto the equipment? Yes  
*Seismic block walls*
9. Do attached lines have adequate flexibility to avoid damage? Yes
10. Based on the above seismic interaction evaluations, is equipment free of potentially adverse seismic interaction effects? Yes

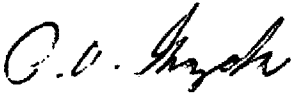
**Other Adverse Conditions**

11. Have you looked for and found no adverse seismic conditions that could adversely affect the safety functions of the equipment? Yes

**Comments**

Seismic walkdown team M. Delaney & P. Gazda 7/30/12 am

Evaluated by:  Marlene Delaney Date: 10/1/2012

 Philip Gazda 10/1/2012

Status:  Y  N  U

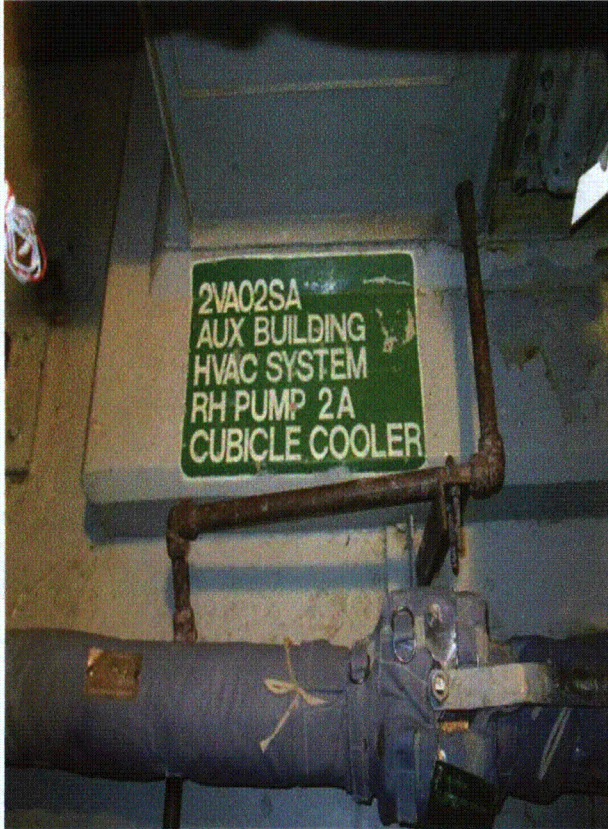
**Seismic Walkdown Checklist (SWC)**

Equipment ID No.: 2VA02SA

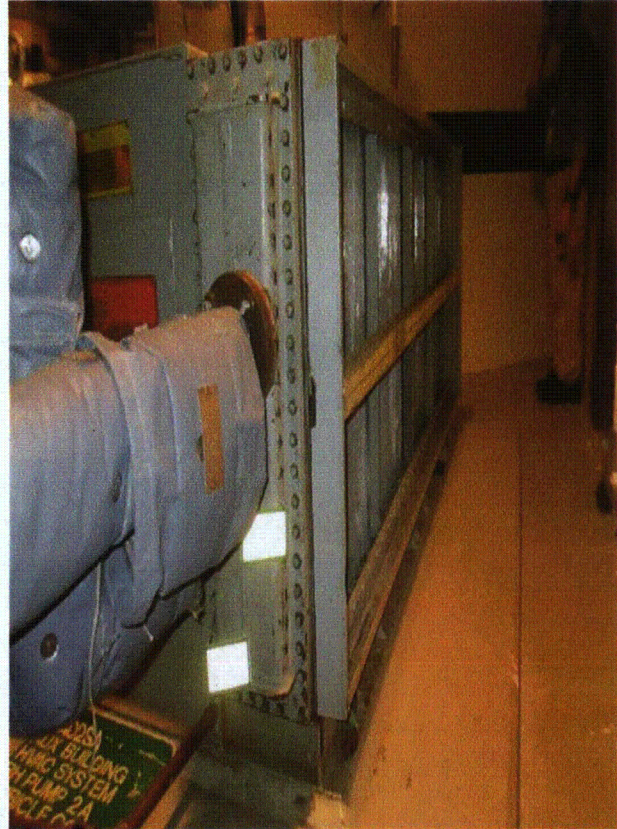
Equipment Class: (10) Air Handlers

Equipment Description: 2A RHR PUMP ROOM CUB CLR ASMBLY

**Photos**



2VA02SA 7-30-12 AM 027



2VA02SA 7-30-12 AM 028



Status:  Y  N  U

**Seismic Walkdown Checklist (SWC)**

Equipment ID No.: 2VA02SA

Equipment Class: (10) Air Handlers

Equipment Description: 2A RHR PUMP ROOM CUB CLR ASMBLY



2VA02SA 7-30-12 AM 029



Status:  Y  N  U

**Seismic Walkdown Checklist (SWC)**

Equipment ID No.: 2VA06SA

Equipment Class: (10) Air Handlers

Equipment Description: COOLER,CENTRIFUGAL CHARGING PUMP 2A

Project: Braidwood 2 SWEL

Location (Bldg, Elev, Room/Area): Auxiliary, 364.00 ft, ALL

Manufacturer/Model:

**Instructions for Completing Checklist**

This checklist may be used to document the results of the Seismic Walkdown of an item of equipment on the SWEL. The space below each of the following questions may be used to record the results of judgments and findings. Additional space is provided at the end of this checklist for documenting other comments.

**Anchorage**

1. Is anchorage configuration verification required (i.e., is the item one of the 50% of SWEL items requiring such verification)? Yes
  
2. Is the anchorage free of bent, broken, missing or loose hardware? Yes
  
3. Is the anchorage free of corrosion that is more than mild surface oxidation? Yes
  
4. Is the anchorage free of visible cracks in the concrete near the anchors? Yes
  
5. Is the anchorage configuration consistent with plant documentation? (Note: This question only applies if the item is one of the 50% for which an anchorage configuration verification is required.) Yes

*Drawing M-1219 Sheet 3 Revision AE*

6. Based on the above anchorage evaluations, is the anchorage free of potentially adverse seismic conditions? Yes

Status:  Y  N  U

**Seismic Walkdown Checklist (SWC)**

Equipment ID No.: 2VA06SA

Equipment Class: (10) Air Handlers

Equipment Description: COOLER,CENTRIFUGAL CHARGING PUMP 2A

**Interaction Effects**

7. Are soft targets free from impact by nearby equipment or structures? Yes
8. Are overhead equipment, distribution systems, ceiling tiles and lighting, and masonry block walls not likely to collapse onto the equipment? Yes  
*Overhead components well-supported. Block walls are seismic.*
9. Do attached lines have adequate flexibility to avoid damage? Yes
10. Based on the above seismic interaction evaluations, is equipment free of potentially adverse seismic interaction effects? Yes

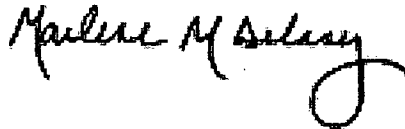
**Other Adverse Conditions**

11. Have you looked for and found no adverse seismic conditions that could adversely affect the safety functions of the equipment? Yes

**Comments**

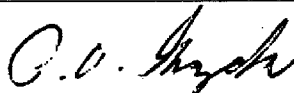
Seismic walkdown team M. Delaney & P. Gazda 7/30/12 am

Evaluated by:



Marlene Delaney

Date: 10/1/2012



Philip Gazda

10/1/2012



Status:  Y  N  U

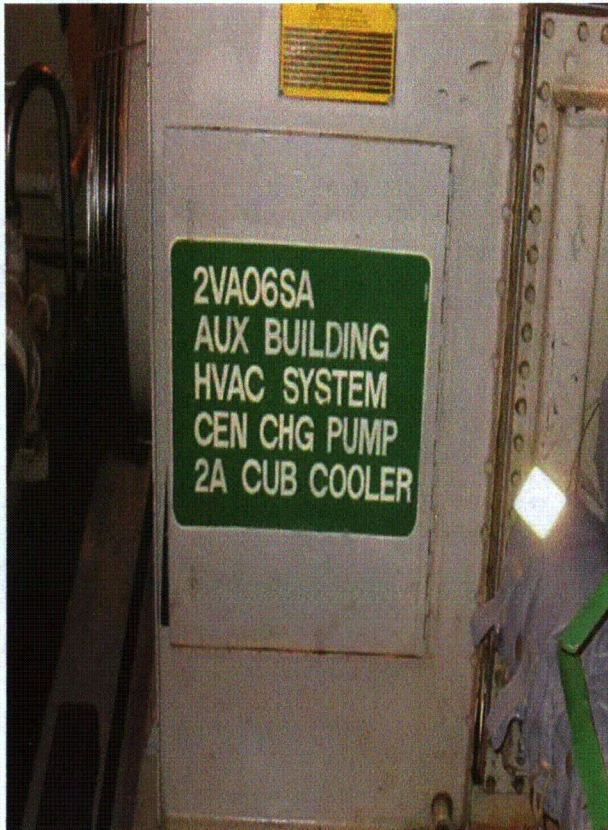
**Seismic Walkdown Checklist (SWC)**

Equipment ID No.: 2VA06SA

Equipment Class: (10) Air Handlers

Equipment Description: COOLER,CENTRIFUGAL CHARGING PUMP 2A

**Photos**



2VA06SA 7-30-12 AM 011



2VA06SA 7-30-12 AM 012



Status:  Y  N  U

**Seismic Walkdown Checklist (SWC)**

Equipment ID No.: 2VA06SA

Equipment Class: (10) Air Handlers

Equipment Description: COOLER,CENTRIFUGAL CHARGING PUMP 2A



2VA06SA 7-30-12 AM 013

Status:  Y  N  U

**Seismic Walkdown Checklist (SWC)**

Equipment ID No.: 2VA10J

Equipment Class: (20) Instrumentation and Control Panels and Cabinets

Equipment Description: CENT CHARGING PUMP CUBICLE COOLER LOCAL PANEL

Project: Braidwood 2 SWEL

Location (Bldg, Elev, Room/Area): Auxiliary, 364.00 ft, ALL

Manufacturer/Model:

**Instructions for Completing Checklist**

This checklist may be used to document the results of the Seismic Walkdown of an item of equipment on the SWEL. The space below each of the following questions may be used to record the results of judgments and findings. Additional space is provided at the end of this checklist for documenting other comments.

**Anchorage**

1. Is anchorage configuration verification required (i.e., is the item one of the 50% of SWEL items requiring such verification)? No
  
2. Is the anchorage free of bent, broken, missing or loose hardware? Yes
  
3. Is the anchorage free of corrosion that is more than mild surface oxidation? Yes
  
4. Is the anchorage free of visible cracks in the concrete near the anchors? Yes
  
5. Is the anchorage configuration consistent with plant documentation? (Note: This question only applies if the item is one of the 50% for which an anchorage configuration verification is required.) Not Applicable
  
6. Based on the above anchorage evaluations, is the anchorage free of potentially adverse seismic conditions? Yes

Status:  Y  N  U

**Seismic Walkdown Checklist (SWC)**

Equipment ID No.: 2VA10J

Equipment Class: (20) Instrumentation and Control Panels and Cabinets

Equipment Description: CENT CHARGING PUMP CUBICLE COOLER LOCAL PANEL

**Interaction Effects**

7. Are soft targets free from impact by nearby equipment or structures? Yes
8. Are overhead equipment, distribution systems, ceiling tiles and lighting, and masonry block walls not likely to collapse onto the equipment? Yes  
*Mounted to seismic block wall.*
9. Do attached lines have adequate flexibility to avoid damage? Yes
10. Based on the above seismic interaction evaluations, is equipment free of potentially adverse seismic interaction effects? Yes

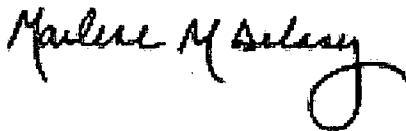
**Other Adverse Conditions**

11. Have you looked for and found no adverse seismic conditions that could adversely affect the safety functions of the equipment? Yes

**Comments**

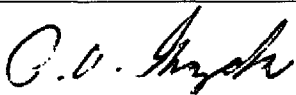
Seismic walkdown team M. Delaney & P. Gazda 7/30/12 am

Evaluated by:



Marlene Delaney

Date: 10/1/2012



Philip Gazda

10/1/2012



Status:  Y  N  U

**Seismic Walkdown Checklist (SWC)**

Equipment ID No.: 2VA10J

Equipment Class: (20) Instrumentation and Control Panels and Cabinets

Equipment Description: CENT CHARGING PUMP CUBICLE COOLER LOCAL PANEL

**Photos**



2VA10J 7-30-12 AM 014

Status:  Y  N  U

**Seismic Walkdown Checklist (SWC)**

Equipment ID No.: 2VD01CA

Equipment Class: (9) Fans

Equipment Description: DIESEL GENERATOR ROOM VENT FAN ASMBLY

Project: Braidwood 2 SWEL

Location (Bldg, Elev, Room/Area): Auxiliary, 401.00 ft, ALL

Manufacturer/Model:

**Instructions for Completing Checklist**

This checklist may be used to document the results of the Seismic Walkdown of an item of equipment on the SWEL. The space below each of the following questions may be used to record the results of judgments and findings. Additional space is provided at the end of this checklist for documenting other comments.

**Anchorage**

1. Is anchorage configuration verification required (i.e., is the item one of the 50% of SWEL items requiring such verification)? Yes
  
2. Is the anchorage free of bent, broken, missing or loose hardware? Yes
  
3. Is the anchorage free of corrosion that is more than mild surface oxidation? Yes
  
4. Is the anchorage free of visible cracks in the concrete near the anchors? Yes
  
5. Is the anchorage configuration consistent with plant documentation? (Note: This question only applies if the item is one of the 50% for which an anchorage configuration verification is required.) Yes  
*M-1222 Sheet 6 Revision N*
  
6. Based on the above anchorage evaluations, is the anchorage free of potentially adverse seismic conditions? Yes

Status:  Y  N  U

**Seismic Walkdown Checklist (SWC)**

Equipment ID No.: 2VD01CA

Equipment Class: (9) Fans

Equipment Description: DIESEL GENERATOR ROOM VENT FAN ASMBLY

**Interaction Effects**

7. Are soft targets free from impact by nearby equipment or structures? Yes
8. Are overhead equipment, distribution systems, ceiling tiles and lighting, and masonry block walls not likely to collapse onto the equipment? Yes
9. Do attached lines have adequate flexibility to avoid damage? Yes
10. Based on the above seismic interaction evaluations, is equipment free of potentially adverse seismic interaction effects? Yes

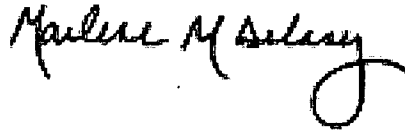
**Other Adverse Conditions**

11. Have you looked for and found no adverse seismic conditions that could adversely affect the safety functions of the equipment? Yes  
*No structural/seismic issues*

**Comments**

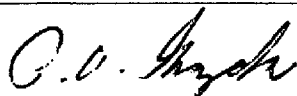
Seismic walkdown team M. Delaney & P. Gazda 7/31/12 pm

Evaluated by:



Marlene Delaney

Date: 10/1/2012



Philip Gazda

10/1/2012



Status:  Y  N  U

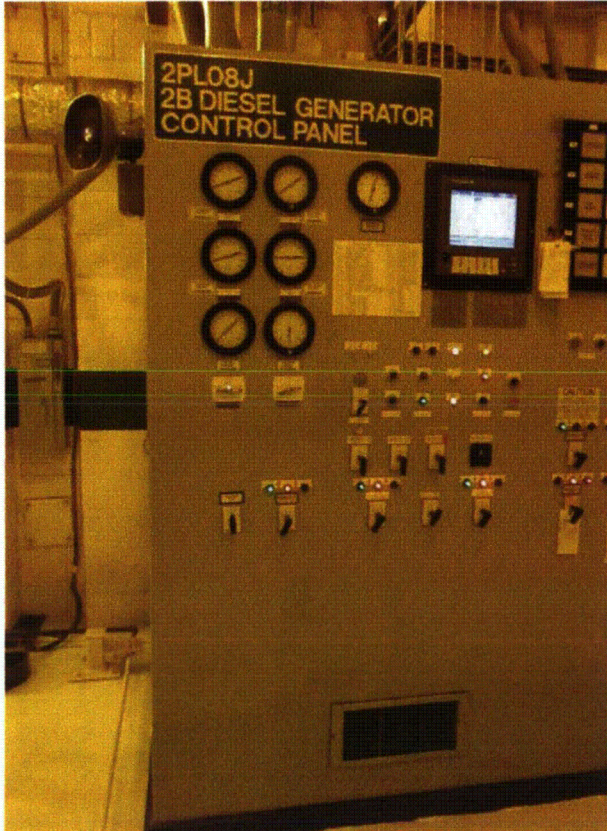
**Seismic Walkdown Checklist (SWC)**

Equipment ID No.: 2VD01CA

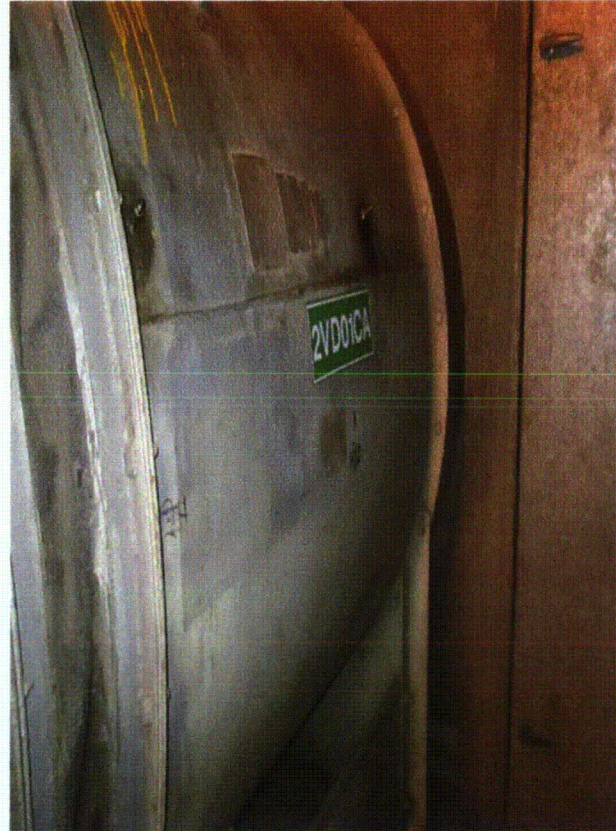
Equipment Class: (9) Fans

Equipment Description: DIESEL GENERATOR ROOM VENT FAN ASMBLY

**Photos**



2VD01CA (NP-6695)7-31-12 103



2VD01CA 7-31-12 100



Status:  Y  N  U

**Seismic Walkdown Checklist (SWC)**

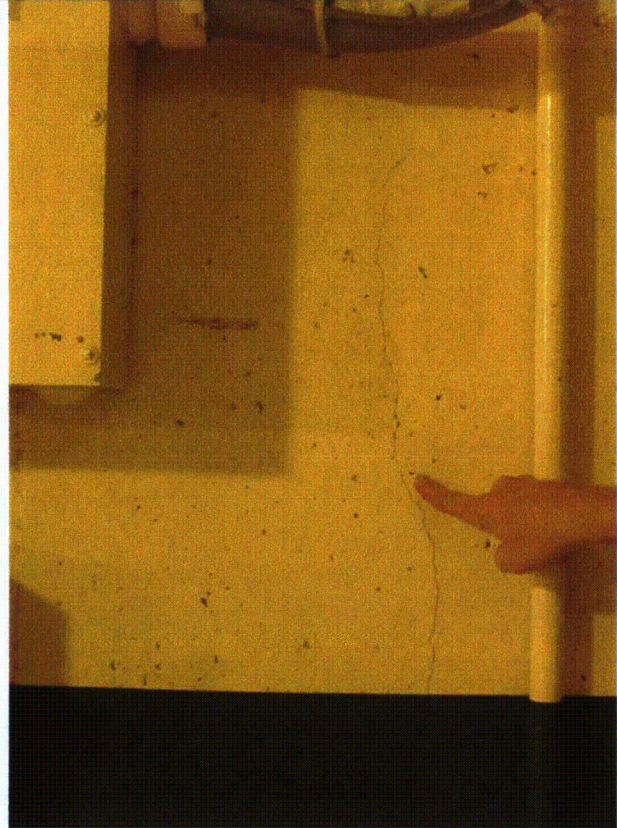
Equipment ID No.: 2VD01CA

Equipment Class: (9) Fans

Equipment Description: DIESEL GENERATOR ROOM VENT FAN ASMBLY



2VD01CA 7-31-12 101



2VD01CA 7-31-12 102

Status:  Y  N  U

**Seismic Walkdown Checklist (SWC)**

Equipment ID No.: 2VD04J

Equipment Class: (20) Instrumentation and Control Panels and Cabinets

Equipment Description: 2A DG RM HVAC DMPR START PNL

Project: Braidwood 2 SWEL

Location (Bldg, Elev, Room/Area): Auxiliary, 401.00 ft, ALL

Manufacturer/Model:

**Instructions for Completing Checklist**

This checklist may be used to document the results of the Seismic Walkdown of an item of equipment on the SWEL. The space below each of the following questions may be used to record the results of judgments and findings. Additional space is provided at the end of this checklist for documenting other comments.

**Anchorage**

1. Is anchorage configuration verification required (i.e., is the item one of the 50% of SWEL items requiring such verification)? No
  
2. Is the anchorage free of bent, broken, missing or loose hardware? Yes
  
3. Is the anchorage free of corrosion that is more than mild surface oxidation? Yes
  
4. Is the anchorage free of visible cracks in the concrete near the anchors? Yes
  
5. Is the anchorage configuration consistent with plant documentation? (Note: This question only applies if the item is one of the 50% for which an anchorage configuration verification is required.) Not Applicable
  
6. Based on the above anchorage evaluations, is the anchorage free of potentially adverse seismic conditions? Yes  
*Well-supported on rack constructed of HSS members*



Status:  Y  N  U

**Seismic Walkdown Checklist (SWC)**

Equipment ID No.: 2VD04J

Equipment Class: (20) Instrumentation and Control Panels and Cabinets

Equipment Description: 2A DG RM HVAC DMPR START PNL

**Interaction Effects**

7. Are soft targets free from impact by nearby equipment or structures? Yes
8. Are overhead equipment, distribution systems, ceiling tiles and lighting, and masonry block walls not likely to collapse onto the equipment? Yes
9. Do attached lines have adequate flexibility to avoid damage? Yes
10. Based on the above seismic interaction evaluations, is equipment free of potentially adverse seismic interaction effects? Yes

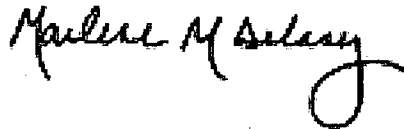
**Other Adverse Conditions**

11. Have you looked for and found no adverse seismic conditions that could adversely affect the safety functions of the equipment? Yes  
*No structural/seismic issues*

**Comments**

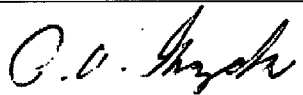
Seismic walkdown team M. Delaney & P. Gazda 7/31/12 pm

Evaluated by:



Marlene Delaney

Date: 10/1/2012



Philip Gazda

10/1/2012

Status:  Y  N  U

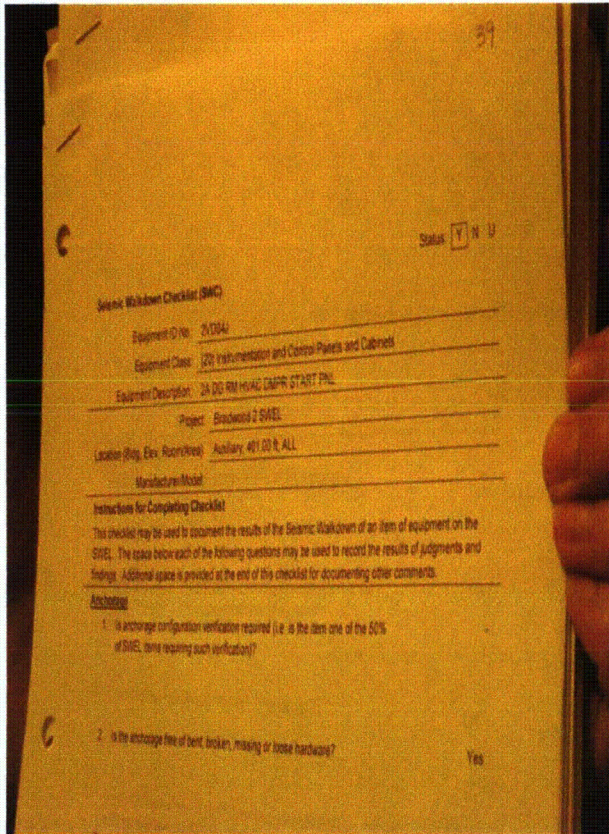
### Seismic Walkdown Checklist (SWC)

Equipment ID No.: 2VD04J

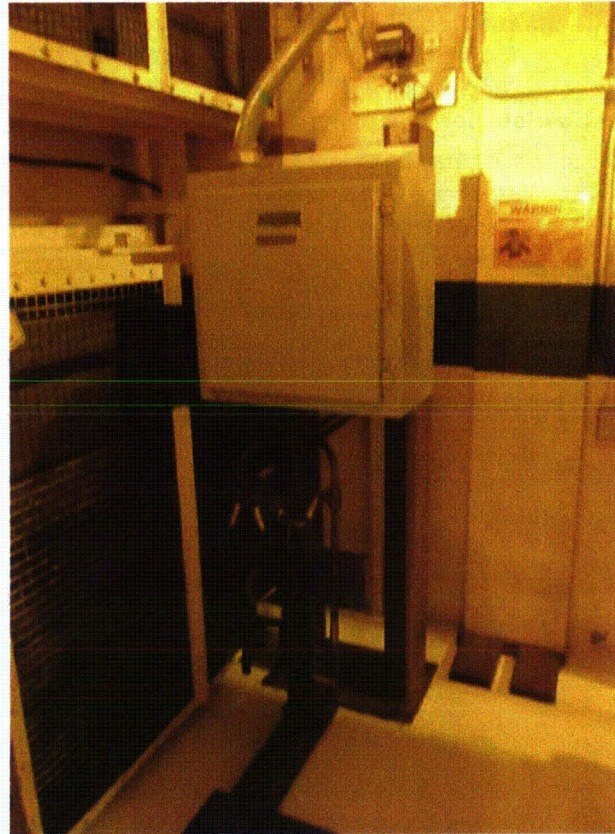
Equipment Class: (20) Instrumentation and Control Panels and Cabinets

Equipment Description: 2A DG RM HVAC DMPR START PNL

#### Photos



2VD04J 7-31-12 098



2VD04J 7-31-12 099

Status:  Y  N  U

**Seismic Walkdown Checklist (SWC)**

Equipment ID No.: 2VX07J

Equipment Class: (20) Instrumentation and Control Panels and Cabinets

Equipment Description: ESF SWGR RM DIV 22 HVADAMPER STARTER PANEL

Project: Braidwood 2 SWEL

Location (Bldg, Elev, Room/Area): Auxiliary, 426.00 ft, ALL

Manufacturer/Model:

**Instructions for Completing Checklist**

This checklist may be used to document the results of the Seismic Walkdown of an item of equipment on the SWEL. The space below each of the following questions may be used to record the results of judgments and findings. Additional space is provided at the end of this checklist for documenting other comments.

**Anchorage**

1. Is anchorage configuration verification required (i.e., is the item one of the 50% of SWEL items requiring such verification)? Yes
  
2. Is the anchorage free of bent, broken, missing or loose hardware? Yes
  
3. Is the anchorage free of corrosion that is more than mild surface oxidation? Yes
  
4. Is the anchorage free of visible cracks in the concrete near the anchors? Yes
  
5. Is the anchorage configuration consistent with plant documentation? (Note: This question only applies if the item is one of the 50% for which an anchorage configuration verification is required.)  
*Drawing 20E-0-3391AT Revision V* Yes
  
6. Based on the above anchorage evaluations, is the anchorage free of potentially adverse seismic conditions? Yes



Status:  Y  N  U

**Seismic Walkdown Checklist (SWC)**

Equipment ID No.: 2VX07J

Equipment Class: (20) Instrumentation and Control Panels and Cabinets

Equipment Description: ESF SWGR RM DIV 22 HVADAMPER STARTER PANEL

**Interaction Effects**

7. Are soft targets free from impact by nearby equipment or structures? Yes
8. Are overhead equipment, distribution systems, ceiling tiles and lighting, and masonry block walls not likely to collapse onto the equipment? Yes  
*Overhead HVAC is well-supported*  
*Seismic block walls*
9. Do attached lines have adequate flexibility to avoid damage? Yes
10. Based on the above seismic interaction evaluations, is equipment free of potentially adverse seismic interaction effects? Yes

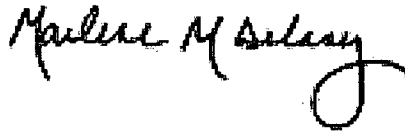
**Other Adverse Conditions**

11. Have you looked for and found no adverse seismic conditions that could adversely affect the safety functions of the equipment? Yes

**Comments**

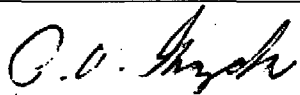
Seismic walkdown team M. Delaney & P. Gazda 7/31/12 pm

Evaluated by:



Marlene Delaney

Date: 10/1/2012



Philip Gazda

10/1/2012

Status:  Y  N  U

**Seismic Walkdown Checklist (SWC)**

Equipment ID No.: 2VX07J

Equipment Class: (20) Instrumentation and Control Panels and Cabinets

Equipment Description: ESF SWGR RM DIV 22 HVADAMPER STARTER PANEL

**Photos**



2VX07J 7-31-12 077

# D

## Area Walk-By Checklists (AWCs)

---

Table D-1 provides the building, elevation, and location of each area as well as a list of SWEL items associated with each area, and page numbers of each Area Walk-By Checklist.



**Table D-1. Summary of Area Walk-By Checklists**

AREA WALK-BY	DESCRIPTION	ID	COMMENTS	PAGE
1	Aux El 364 2A Centrifugal Charging Pump Room	2CV01PA		D- 5
		2CV01PA-A		
		2CV02SA		
		2VA06SA		
		2VA10J		
2	Aux, El 364, 2A RHR Heat Exchanger Room	2RH610		D- 7
3	Aux El 364 near Column S-18, Q-18	0FC012		D- 9
4	Aux El 346 2A Residual Heat Removal Pump Room	2RH01PA		D- 11
		2RH01PA-A		
		2VA02SA		
5	Aux El 364 Curved Wall (Area 7)	2RH8716B		D- 13
		2TE-0604		
		2CV112D		
		2CV112E		
		2CV8110		
		2CV8804A		
6	Fuel Handling Bldg El. 401 Adjacent to truck bay	2FC022		D- 15
		2PI-0633		
7	Fuel Handling Bldg El. 401 Spent Fuel HX Room	2FC8762B		D- 17
		2FC8792B		
		2FC8792A		
		2FC004A		
		2FC01A		
		2FC8762A		
		2FC004B		
		2FC8756		
		2FC8757		
8	Fuel Handling Bldg El. 401 U2 Spent Fuel Pump Room	2FC01P		D- 19
		2FC005		
		2FC006		
		2FC8793		
9	Aux Bldg El 451 Unit 2 MEER Room (Division 21)	2DC05E		D- 21
		2DC03E		
		2DC10J		
		2IP01E		
		2IP03E		
		2IP05E		
10	Aux El 451 Division 211 Battery Room	2IP07E		D- 23
		2DC01E		

AREA WALK-BY	DESCRIPTION	ID	COMMENTS	PAGE
10A	Aux EI 451 Unit 2 MEER Division 22	2DC04E		D- 25
		2DC06E		
		2DC06EA		
		2IP02E		
		2IP04E		
		2IP06E		
		2IP08E		
11	Aux EI 451 & 463 OB VC Room	0VC16J		D- 27
		0VC01JB		
12	Aux EI 451 Aux Electric Equipment Room	2IP01J		D- 29
		2PA03J		
		2PA09J		
		2PA27J		
13	Aux EI 451 Unit 2 Control Room	2PM05J		D- 31
		2PM06J		
		2PM07J		
		2PM11J		
14	Aux EI 451, OA VC Room (0VC02FA	0VC02FA		D- 33
15	Aux EI 426, Division 21 ESF (2AP05E, 2AP10E, 2DG04EA)	2AP05E		D- 35
		2AP10E		
		2DG04EA		
16	Aux EI 426, ESF Switchgear Room Division 22 (2AP06E, 2AP12E, 2AP13E, 2VX07J)	2AP06E		D- 37
		2AP12E		
		2AP13E		
		2VX07J		
17	Area Walk-by 17, Aux, EI.401 2VD01CA Room	2VD01CA		D- 39
18	Aux EI 401, DG 2A Room (2DG01KA, 2PL07J, 2SX169A, 2VD04J)	2DG01KA		D- 41
		2PL07J		
		2SX169A		
		2VD04J		
19	Aux EI 401, 2B Diesel Generator Room (2PL08J)	2PL08J		D- 43
20	Aux EI 401, MSIV 2A-2D Room (2MS018D)	2MS018D		D- 45
21	EI 377 2A-2D MSIV Room (2PT-0514, 2PT-0546)	2PT-0514		D- 47
		2PT-0546		
22	EI 377 2B-2C MSIV Room	2MS018C		D- 49
		2MS001C		
23	Aux EI 401 (near access point) (2AP22E)	2AP22E		D- 51
24	Aux EI 383, 2B Aux Feedpump Room (2AF01EA-A, 2AF01J)	2AF01EA-A		D- 53
		2AF01J		
25	Aux EI 383 near Cols M-18 and P-17 (2AF006A, 2AF017A, 2AF01PA, 2AF01PA-A)	2AF006A		D- 55
		2AF017A		
		2AF01PA		
		2AF01PA-A		

AREA WALK-BY	DESCRIPTION	ID	COMMENTS	PAGE
26	Aux, El 364 near Col M-26 (2AF005G, 2FT-AF012, 2AF005C)	2AF005G		D- 57
		2FT-AF012		
		2AF005C		
27	Aux El 330 Essential Service Water Pump Room 1A/2A (2SX004, 2SX001AA, 2SX01PA, 2SX01PA-C, 2SX0033, 2VA01J, 2VA01SA)	2SX004		D- 59
		2SX01AA		
		2SX01PA		
		2SX01PA-C		
		2SX033		
		2VA01J		
		2VA01SA		
28	Aux El. 330 (ESW Pump Rm 1B/2B - 2SX005)	2SX005		D- 61
29	Aux, El 375 Curved Wall (2SI8801A, 2SI8801B)	2SI8801A		D- 63
		2SI8801B		
30	Aux, Curved Wall Area 7, El 401 (2FC8758, 2CV8105, 2CV8106)	2CV8105		D- 65
		2CV8106		
		2FC8758		
31	Aux Area 7 El 364 (2FC011)	2FC011		D- 67
32	Aux, El 451, near Col S-24 (2PT-0935)	2PT-0935		D- 69
33	Aux El 426, near Col Q-18 (2AP30E, 2AP32E)	2AP30E		D- 71
		2AP32E		
34	Aux El 426 by Electrical Penetrations (2AP27E)	2AP27E		D- 73
35	Aux El 364 near Col M-23 (2CC01PA, 2CC01PB)	2CC01PA		D- 75
		2CC01PB		
36	Aux El 364, col Q-18 (2IY-0606, 2IY-0607, 2CC9412A)	2IY-0606		D- 77
		2IY-0607		
		2CC9412A		
37	Aux El 346 near Col M-16 (0SX007, 0SX146)	0SX007		D- 79
		0SX146		
38	Aux El 346 Column M-23, P-24 (2AP38E)	2AP38E		D- 81
39	Aux El 373, 2A Diesel Oil Storage Tank Room (2DO01TA)	2DO01TA		D- 83
40	Aux El 364, Unit 1 curved wall (Area 5 - close to MCC)	0FC006A		D- 85
41	Area Walk-by 33 and 34 from Unit 1	0FC8754		D- 87

Table D-1 Page 3 of 3



Status:  Y  N  U

### Area Walk-By Checklist (AWC)

Location (Bldg, Elev, Room/Area): Area Walk-by 01

---

#### Instructions for Completing Checklist

This checklist may be used to document the results of the Area Walk-By near one or more SWEL items. The space below each of the following questions may be used to record the results of judgments and findings. Additional space is provided at the end of this checklist for documenting other comments.

---

1. Does anchorage of equipment in the area appear to be free of potentially adverse seismic conditions (if visible without necessarily opening cabinets)? Yes  
*Majority of equipment in area addressed in SWECs. All other items well-supported.*
  
  2. Does anchorage of equipment in the area appear to be free of significant degraded conditions? Yes
  
  3. Based on a visual inspection from the floor, do the cable/conduit raceways and HVAC ducting appear to be free of potentially adverse seismic conditions (e.g., condition of supports is adequate and fill conditions of cable trays appear to be inside acceptable limits)? Yes
  
  4. Does it appear that the area is free of potentially adverse seismic spatial interactions with other equipment in the area (e.g., ceiling tiles and lighting)? Yes
  
  5. Does it appear that the area is free of potentially adverse seismic interactions that could cause flooding or spray in the area? Yes  
*No sprinkler piping in area.*
  
  6. Does it appear that the area is free of potentially adverse seismic interactions that could cause a fire in the area? Yes
-

Status:  Y  N  U

**Area Walk-By Checklist (AWC)**

Location (Bldg, Elev, Room/Area): Area Walk-by 01

- 
7. Does it appear that the area is free of potentially adverse seismic interactions associated with housekeeping practices, storage of portable equipment, and temporary installations (e.g., scaffolding, lead shielding)? Yes  
*Box for hoses near pump could slide but would not damage any equipment or components. Box is low to ground and would impact the skids and not the equipment.*
8. Have you looked for and found no other seismic conditions that could adversely affect the safety functions of the equipment in the area? Yes

---

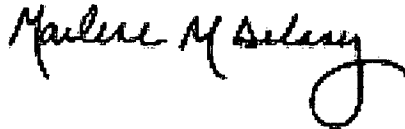
**Comments**

Seismic walkdown team M. Delaney & P. Gazda 7/30/12 am

Aux, El. 364, 2A Centrifugal Charging Pump Room (2CV01PA, 2CV02SA, 2CV01PA-A, 2VA06SA, 2VA10J,)

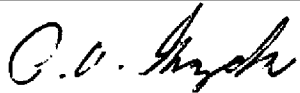
---

Evaluated by:



Marlene Delaney

Date: 10/1/2012



Philip Gazda

10/1/2012

---

**Photos**

None.

Status:  Y  N  U

**Area Walk-By Checklist (AWC)**

Location (Bldg, Elev, Room/Area): Area Walk-by 02

---

**Instructions for Completing Checklist**

This checklist may be used to document the results of the Area Walk-By near one or more SWEL items. The space below each of the following questions may be used to record the results of judgments and findings. Additional space is provided at the end of this checklist for documenting other comments.

---

1. Does anchorage of equipment in the area appear to be free of potentially adverse seismic conditions (if visible without necessarily opening cabinets)? Yes
  
  2. Does anchorage of equipment in the area appear to be free of significant degraded conditions? Yes
  
  3. Based on a visual inspection from the floor, do the cable/conduit raceways and HVAC ducting appear to be free of potentially adverse seismic conditions (e.g., condition of supports is adequate and fill conditions of cable trays appear to be inside acceptable limits)? Yes
  
  4. Does it appear that the area is free of potentially adverse seismic spatial interactions with other equipment in the area (e.g., ceiling tiles and lighting)? Yes
  
  5. Does it appear that the area is free of potentially adverse seismic interactions that could cause flooding or spray in the area?  
*No fire protection piping* Yes
  
  6. Does it appear that the area is free of potentially adverse seismic interactions that could cause a fire in the area? Yes
-



Status:  Y  N  U

**Area Walk-By Checklist (AWC)**

Location (Bldg, Elev, Room/Area): Area Walk-by 02

7. Does it appear that the area is free of potentially adverse seismic interactions associated with housekeeping practices, storage of portable equipment, and temporary installations (e.g., scaffolding, lead shielding)? Yes  
*Two scaffolds in area are laterally supported and have appropriate stand-offs*

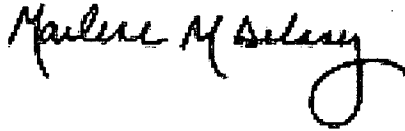
8. Have you looked for and found no other seismic conditions that could adversely affect the safety functions of the equipment in the area? Yes

**Comments**

Seismic walkdown team M. Delaney & P. Gazda 7/30/12 am

Aux, 2A RHR Heat Exchanger Room El. 364 (2RH610)

Evaluated by:



Marlene Delaney

Date: 10/1/2012



Philip Gazda

10/1/2012

**Photos**

None.

Status:  Y  N  U

**Area Walk-By Checklist (AWC)**

Location (Bldg, Elev, Room/Area): Area Walk-by 03

---

**Instructions for Completing Checklist**

This checklist may be used to document the results of the Area Walk-By near one or more SWEL items. The space below each of the following questions may be used to record the results of judgments and findings. Additional space is provided at the end of this checklist for documenting other comments.

---

1. Does anchorage of equipment in the area appear to be free of potentially adverse seismic conditions (if visible without necessarily opening cabinets)? Yes  
*Instrument racks and pipe supports are well-anchored*
  
  2. Does anchorage of equipment in the area appear to be free of significant degraded conditions? Yes
  
  3. Based on a visual inspection from the floor, do the cable/conduit raceways and HVAC ducting appear to be free of potentially adverse seismic conditions (e.g., condition of supports is adequate and fill conditions of cable trays appear to be inside acceptable limits)? Yes
  
  4. Does it appear that the area is free of potentially adverse seismic spatial interactions with other equipment in the area (e.g., ceiling tiles and lighting)? Yes
  
  5. Does it appear that the area is free of potentially adverse seismic interactions that could cause flooding or spray in the area? Yes  
*Sprinkler piping is well-supported vertically and laterally*
  
  6. Does it appear that the area is free of potentially adverse seismic interactions that could cause a fire in the area? Yes
-

Status:  Y  N  U

**Area Walk-By Checklist (AWC)**

Location (Bldg, Elev, Room/Area): Area Walk-by 03

- 
7. Does it appear that the area is free of potentially adverse seismic interactions associated with housekeeping practices, storage of portable equipment, and temporary installations (e.g., scaffolding, lead shielding)? Yes  
*Numerous carts and equipment boxes tied off with wheels chocked  
Gas cylinder tied off at one location - acceptable per Exelon procedure SA-AA-122*
8. Have you looked for and found no other seismic conditions that could adversely affect the safety functions of the equipment in the area? Yes  
*All block walls are seismically designed*
- 

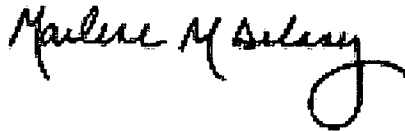
**Comments**

Seismic walkdown team M. Delaney & P. Gazda 7/30/12 am

Aux El. 364, near Q-18, (0FC012)

---

Evaluated by:



Marlene Delaney

Date: 10/1/2012

---



Philip Gazda

10/1/2012

---

**Photos**

None.

---



Status:  Y  N  U

### Area Walk-By Checklist (AWC)

Location (Bldg, Elev, Room/Area): Area Walk-by 04

---

#### Instructions for Completing Checklist

This checklist may be used to document the results of the Area Walk-By near one or more SWEL items. The space below each of the following questions may be used to record the results of judgments and findings. Additional space is provided at the end of this checklist for documenting other comments.

---

1. Does anchorage of equipment in the area appear to be free of potentially adverse seismic conditions (if visible without necessarily opening cabinets)? Yes
  
  2. Does anchorage of equipment in the area appear to be free of significant degraded conditions? Yes
  
  3. Based on a visual inspection from the floor, do the cable/conduit raceways and HVAC ducting appear to be free of potentially adverse seismic conditions (e.g., condition of supports is adequate and fill conditions of cable trays appear to be inside acceptable limits)? Yes
  
  4. Does it appear that the area is free of potentially adverse seismic spatial interactions with other equipment in the area (e.g., ceiling tiles and lighting)? Yes
  
  5. Does it appear that the area is free of potentially adverse seismic interactions that could cause flooding or spray in the area?  
*Fire protection piping is well-supported and welded* Yes
  
  6. Does it appear that the area is free of potentially adverse seismic interactions that could cause a fire in the area? Yes
  
  7. Does it appear that the area is free of potentially adverse seismic interactions associated with housekeeping practices, storage of portable equipment, and temporary installations (e.g., scaffolding, lead shielding)? Yes
-

Status:  Y  N  U

**Area Walk-By Checklist (AWC)**

Location (Bldg, Elev, Room/Area): Area Walk-by 04

---

8. Have you looked for and found no other seismic conditions that could adversely affect the safety functions of the equipment in the area? Yes

---

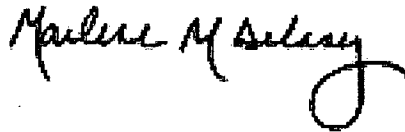
**Comments**

Seismic walkdown team M. Delaney & P. Gazda 7/30/12 am

Aux, El. 346, 2A Residual Heat Removal Pump 'Room U2 (2RH01PA, 2VA02SA, 2RH01PA-A)

---

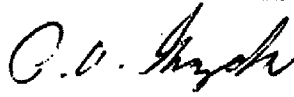
Evaluated by:



Marlene Delaney

Date: 10/1/2012

---



Philip Gazda

10/1/2012

---

---

**Photos**

None.

---

Status:  Y  N  U

**Area Walk-By Checklist (AWC)**

Location (Bldg, Elev, Room/Area): Area Walk-by 05

---

**Instructions for Completing Checklist**

This checklist may be used to document the results of the Area Walk-By near one or more SWEL items. The space below each of the following questions may be used to record the results of judgments and findings. Additional space is provided at the end of this checklist for documenting other comments.

---

1. Does anchorage of equipment in the area appear to be free of potentially adverse seismic conditions (if visible without necessarily opening cabinets)? Yes
  
  2. Does anchorage of equipment in the area appear to be free of significant degraded conditions? Yes
  
  3. Based on a visual inspection from the floor, do the cable/conduit raceways and HVAC ducting appear to be free of potentially adverse seismic conditions (e.g., condition of supports is adequate and fill conditions of cable trays appear to be inside acceptable limits)? Yes
  
  4. Does it appear that the area is free of potentially adverse seismic spatial interactions with other equipment in the area (e.g., ceiling tiles and lighting)? Yes
  
  5. Does it appear that the area is free of potentially adverse seismic interactions that could cause flooding or spray in the area?  
*Fire protection piping is well-supported (piping is threaded but since it is well-supported this is not an issue)* Yes
  
  6. Does it appear that the area is free of potentially adverse seismic interactions that could cause a fire in the area? Yes
-



Status:  Y  N  U

**Area Walk-By Checklist (AWC)**

Location (Bldg, Elev, Room/Area): Area Walk-by 05

- 
7. Does it appear that the area is free of potentially adverse seismic interactions associated with housekeeping practices, storage of portable equipment, and temporary installations (e.g., scaffolding, lead shielding)? Yes  
*Scaffolding in area is tied off and braced. No issues found.*  
*Rad protection post less than 12" from instrument gauge. RP notified to move post.*
8. Have you looked for and found no other seismic conditions that could adversely affect the safety functions of the equipment in the area? Yes

---

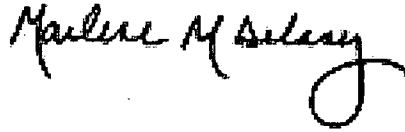
**Comments**

Seismic walkdown team M. Delaney & P. Gazda 7/30/12 am

Aux, Area 7, El. 364, curved wall (2TE-0604, and others)

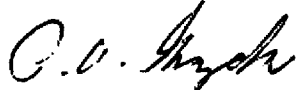
---

Evaluated by:



Marlene Delaney

Date: 10/1/2012



Philip Gazda

10/1/2012

---

**Photos**

None.

Status:  Y  N  U

**Area Walk-By Checklist (AWC)**

Location (Bldg, Elev, Room/Area): Area Walk-by 06

---

**Instructions for Completing Checklist**

This checklist may be used to document the results of the Area Walk-By near one or more SWEL items. The space below each of the following questions may be used to record the results of judgments and findings. Additional space is provided at the end of this checklist for documenting other comments.

---

1. Does anchorage of equipment in the area appear to be free of potentially adverse seismic conditions (if visible without necessarily opening cabinets)? Yes
  
  2. Does anchorage of equipment in the area appear to be free of significant degraded conditions? Yes
  
  3. Based on a visual inspection from the floor, do the cable/conduit raceways and HVAC ducting appear to be free of potentially adverse seismic conditions (e.g., condition of supports is adequate and fill conditions of cable trays appear to be inside acceptable limits)? Yes
  
  4. Does it appear that the area is free of potentially adverse seismic spatial interactions with other equipment in the area (e.g., ceiling tiles and lighting)? Yes
  
  5. Does it appear that the area is free of potentially adverse seismic interactions that could cause flooding or spray in the area?  
*Fire protection piping is well-supported* Yes
  
  6. Does it appear that the area is free of potentially adverse seismic interactions that could cause a fire in the area? Yes
-

Status:  Y  N  U

**Area Walk-By Checklist (AWC)**

Location (Bldg, Elev, Room/Area): Area Walk-by 06

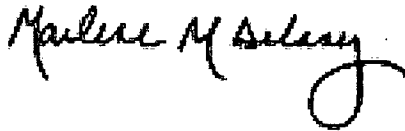
7. Does it appear that the area is free of potentially adverse seismic interactions associated with housekeeping practices, storage of portable equipment, and temporary installations (e.g., scaffolding, lead shielding)? Yes  
*Boxes identified in Unit 1 Area Walk-by have been moved and re-positioned as to not be an seismic housekeeping issue.*
8. Have you looked for and found no other seismic conditions that could adversely affect the safety functions of the equipment in the area? Yes

**Comments**

Seismic walkdown team M. Delaney & P. Gazda 7/30/12 pm

Fuel Handling Building adjacent to truck bay, El. 401', (2FC022, 2PI-0633)

Evaluated by:



Marlene Delaney

Date: 10/1/2012



Philip Gazda

10/1/2012

**Photos**

None.



Status:  Y  N  U

### Area Walk-By Checklist (AWC)

Location (Bldg, Elev, Room/Area): Area Walk-by 07

---

#### Instructions for Completing Checklist

This checklist may be used to document the results of the Area Walk-By near one or more SWEL items. The space below each of the following questions may be used to record the results of judgments and findings. Additional space is provided at the end of this checklist for documenting other comments.

---

1. Does anchorage of equipment in the area appear to be free of potentially adverse seismic conditions (if visible without necessarily opening cabinets)? Yes
  
  2. Does anchorage of equipment in the area appear to be free of significant degraded conditions? Yes
  
  3. Based on a visual inspection from the floor, do the cable/conduit raceways and HVAC ducting appear to be free of potentially adverse seismic conditions (e.g., condition of supports is adequate and fill conditions of cable trays appear to be inside acceptable limits)? Yes
  
  4. Does it appear that the area is free of potentially adverse seismic spatial interactions with other equipment in the area (e.g., ceiling tiles and lighting)? Yes  
*Seismic block walls in area. Removable block walls are restrained by anchored grating.*
  
  5. Does it appear that the area is free of potentially adverse seismic interactions that could cause flooding or spray in the area? Yes
  
  6. Does it appear that the area is free of potentially adverse seismic interactions that could cause a fire in the area? Yes
  
  7. Does it appear that the area is free of potentially adverse seismic interactions associated with housekeeping practices, storage of portable equipment, and temporary installations (e.g., scaffolding, lead shielding)? Yes
-

Status:  Y  N  U

**Area Walk-By Checklist (AWC)**

Location (Bldg, Elev, Room/Area): Area Walk-by 07

---

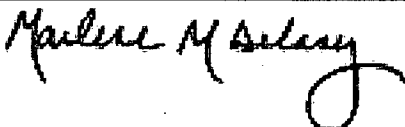
8. Have you looked for and found no other seismic conditions that could adversely affect the safety functions of the equipment in the area? Yes

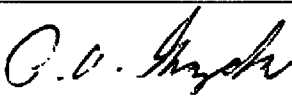
---

**Comments**

Fuel Handling Building, El. 401, HX Room

---

Evaluated by:  Marlene Delaney Date: 10/1/2012

 Philip Gazda 10/1/2012

---

**Photos**

None.

---

Status:  Y  N  U

### Area Walk-By Checklist (AWC)

Location (Bldg, Elev, Room/Area): Area Walk-by 08

---

#### Instructions for Completing Checklist

This checklist may be used to document the results of the Area Walk-By near one or more SWEL items. The space below each of the following questions may be used to record the results of judgments and findings. Additional space is provided at the end of this checklist for documenting other comments.

---

1. Does anchorage of equipment in the area appear to be free of potentially adverse seismic conditions (if visible without necessarily opening cabinets)? Yes
  
  2. Does anchorage of equipment in the area appear to be free of significant degraded conditions? Yes
  
  3. Based on a visual inspection from the floor, do the cable/conduit raceways and HVAC ducting appear to be free of potentially adverse seismic conditions (e.g., condition of supports is adequate and fill conditions of cable trays appear to be inside acceptable limits)? Yes
  
  4. Does it appear that the area is free of potentially adverse seismic spatial interactions with other equipment in the area (e.g., ceiling tiles and lighting)?  
*Seismic block walls* Yes
  
  5. Does it appear that the area is free of potentially adverse seismic interactions that could cause flooding or spray in the area? Yes
  
  6. Does it appear that the area is free of potentially adverse seismic interactions that could cause a fire in the area? Yes
  
  7. Does it appear that the area is free of potentially adverse seismic interactions associated with housekeeping practices, storage of portable equipment, and temporary installations (e.g., scaffolding, lead shielding)? Yes
-



Status:  Y  N  U

**Area Walk-By Checklist (AWC)**

Location (Bldg, Elev, Room/Area): Area Walk-by 08

---

8. Have you looked for and found no other seismic conditions that could adversely affect the safety functions of the equipment in the area? Yes  
*Detailed inspection of contaminated areas was not performed*

*Plastic cover fell off smoke detector above the U2 FC HX. The detector cover given to WEC to be replaced. IR 1395709 written - not a structural/seismic issue*

---

**Comments**

Seismic walkdown team M. Delaney & P. Gazda 7/30/12 pm

Fuel Handling Building El. 401, Unit 2 pump room, (2FC01P, 2FC006, 2FC005, 2FC8793)

---

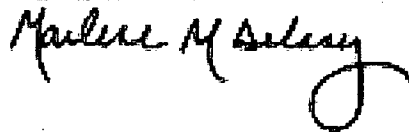
Evaluated by:



PA Gazda

Date: 10/1/12

---



MM Delaney

10/1/12

---

**Photos**

---

Status:  Y  N  U

### Area Walk-By Checklist (AWC)

Location (Bldg, Elev, Room/Area): Area Walk-by 09

---

#### Instructions for Completing Checklist

This checklist may be used to document the results of the Area Walk-By near one or more SWEL items. The space below each of the following questions may be used to record the results of judgments and findings. Additional space is provided at the end of this checklist for documenting other comments.

---

1. Does anchorage of equipment in the area appear to be free of potentially adverse seismic conditions (if visible without necessarily opening cabinets)? Yes
  
  2. Does anchorage of equipment in the area appear to be free of significant degraded conditions? Yes  
*Minor corrosion on some welds. Floor degradation at eye wash.*
  
  3. Based on a visual inspection from the floor, do the cable/conduit raceways and HVAC ducting appear to be free of potentially adverse seismic conditions (e.g., condition of supports is adequate and fill conditions of cable trays appear to be inside acceptable limits)? Yes
  
  4. Does it appear that the area is free of potentially adverse seismic spatial interactions with other equipment in the area (e.g., ceiling tiles and lighting)? Yes  
*Seismic block walls in area.*
  
  5. Does it appear that the area is free of potentially adverse seismic interactions that could cause flooding or spray in the area? Yes
  
  6. Does it appear that the area is free of potentially adverse seismic interactions that could cause a fire in the area? Yes
-

Status:  Y  N  U

**Area Walk-By Checklist (AWC)**

Location (Bldg, Elev, Room/Area): Area Walk-by 09

- 
7. Does it appear that the area is free of potentially adverse seismic interactions associated with housekeeping practices, storage of portable equipment, and temporary installations (e.g., scaffolding, lead shielding)? Yes  
*Scaffolding in area is well-constructed and braced. Movement limited by plant structures and would not impact equipment in area. No bulb guards but lights would not adversely impact equipment if they were to fall. S&L Std E-103 -ok*
8. Have you looked for and found no other seismic conditions that could adversely affect the safety functions of the equipment in the area? Yes

---

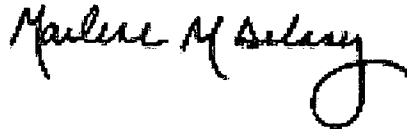
**Comments**

Seismic walkdown team M. Delaney & P. Gazda 7/30/12 pm

Aux El. 451 (Division 21) Meer Rooms (2DC05E, 2DC03E, 2DC10J, 2IP01E, 2IP03E, 2IP05E, 2IP07E)

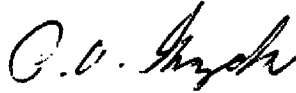
---

Evaluated by:



Marlene Delaney

Date: 10/1/2012



Philip Gazda

10/1/2012

---

**Photos**

None.



Status:  Y  N  U

**Area Walk-By Checklist (AWC)**

Location (Bldg, Elev, Room/Area): Area Walk-by 10

---

**Instructions for Completing Checklist**

This checklist may be used to document the results of the Area Walk-By near one or more SWEL items. The space below each of the following questions may be used to record the results of judgments and findings. Additional space is provided at the end of this checklist for documenting other comments.

---

1. Does anchorage of equipment in the area appear to be free of potentially adverse seismic conditions (if visible without necessarily opening cabinets)? Yes
  
  2. Does anchorage of equipment in the area appear to be free of significant degraded conditions? Yes
  
  3. Based on a visual inspection from the floor, do the cable/conduit raceways and HVAC ducting appear to be free of potentially adverse seismic conditions (e.g., condition of supports is adequate and fill conditions of cable trays appear to be inside acceptable limits)? Yes  
*HVAC well-supported*
  
  4. Does it appear that the area is free of potentially adverse seismic spatial interactions with other equipment in the area (e.g., ceiling tiles and lighting)? Yes  
*See SWEC for 2DC01E for discussion on open S-hook.*
  
  5. Does it appear that the area is free of potentially adverse seismic interactions that could cause flooding or spray in the area? Yes
  
  6. Does it appear that the area is free of potentially adverse seismic interactions that could cause a fire in the area? Yes
-

Status:  Y  N  U

**Area Walk-By Checklist (AWC)**

Location (Bldg, Elev, Room/Area): Area Walk-by 10

- 
7. Does it appear that the area is free of potentially adverse seismic interactions associated with housekeeping practices, storage of portable equipment, and temporary installations (e.g., scaffolding, lead shielding)? Yes  
*Eye wash is far enough away and tagged to indicate seismic housekeeping is met.*
8. Have you looked for and found no other seismic conditions that could adversely affect the safety functions of the equipment in the area? Yes

---

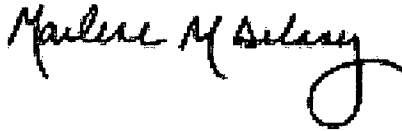
**Comments**

Seismic walkdown team M. Delaney & P. Gazda 7/31/12 am

Aux Bldg, El.451, Division 211 Room (2DC01E)

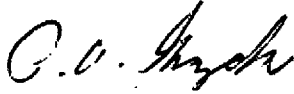
---

Evaluated by:



Marlene Delaney

Date: 10/1/2012



Philip Gazda

10/1/2012

---

**Photos**

None.

Status:  Y  N  U

### Area Walk-By Checklist (AWC)

Location (Bldg, Elev, Room/Area): Area Walk-by 10a

---

#### Instructions for Completing Checklist

This checklist may be used to document the results of the Area Walk-By near one or more SWEL items. The space below each of the following questions may be used to record the results of judgments and findings. Additional space is provided at the end of this checklist for documenting other comments.

---

1. Does anchorage of equipment in the area appear to be free of potentially adverse seismic conditions (if visible without necessarily opening cabinets)? Yes
  
  2. Does anchorage of equipment in the area appear to be free of significant degraded conditions? Yes
  
  3. Based on a visual inspection from the floor, do the cable/conduit raceways and HVAC ducting appear to be free of potentially adverse seismic conditions (e.g., condition of supports is adequate and fill conditions of cable trays appear to be inside acceptable limits)? Yes
  
  4. Does it appear that the area is free of potentially adverse seismic spatial interactions with other equipment in the area (e.g., ceiling tiles and lighting)? Yes  
*No bulb guards on lights however they would not damage equipment if they fell. Note that the lights are supported on rods and/or unistruts. S&L Std E-103 -ok*
  
  5. Does it appear that the area is free of potentially adverse seismic interactions that could cause flooding or spray in the area? Yes
  
  6. Does it appear that the area is free of potentially adverse seismic interactions that could cause a fire in the area? Yes
  
  7. Does it appear that the area is free of potentially adverse seismic interactions associated with housekeeping practices, storage of portable equipment, and temporary installations (e.g., scaffolding, lead shielding)? Yes
-



Status:  Y  N  U

**Area Walk-By Checklist (AWC)**

Location (Bldg, Elev, Room/Area): Area Walk-by 10a

---

8. Have you looked for and found no other seismic conditions that could adversely affect the safety functions of the equipment in the area? Yes

*Seismic block walls.*

*Cabinets 2RD03E and 2RD05E did not appear to be bolted together as recommended in IPEEE. Upon opening one cabinet, it was observed that there are interior bolts connecting the two panels.*

*Other cabinets in the room also were not connected to each other and had small gaps but per operations, the cabinets are not required for safe shutdown therefore this is not an issue.*

---

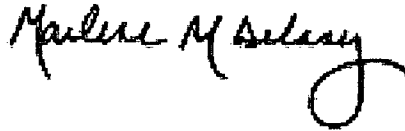
**Comments**

Seismic walkdown team M. Delaney & P. Gazda 7/31/12 am

Aux, EI 451 Division 22 MEER Room ( 2DC04E, 2DC06E,2DC06EA, 2IP02E, 2IP04E, 2IP06E, 2IP08E)

---

Evaluated by:



Marlene Delaney

Date: 10/1/2012

---



Philip Gazda

10/1/2012

---

**Photos**

None.

---

Status:  Y  N  U

### Area Walk-By Checklist (AWC)

Location (Bldg, Elev, Room/Area): Area Walk-by 11

---

#### Instructions for Completing Checklist

This checklist may be used to document the results of the Area Walk-By near one or more SWEL items. The space below each of the following questions may be used to record the results of judgments and findings. Additional space is provided at the end of this checklist for documenting other comments.

---

1. Does anchorage of equipment in the area appear to be free of potentially adverse seismic conditions (if visible without necessarily opening cabinets)? Yes
  
  2. Does anchorage of equipment in the area appear to be free of significant degraded conditions? Yes
  
  3. Based on a visual inspection from the floor, do the cable/conduit raceways and HVAC ducting appear to be free of potentially adverse seismic conditions (e.g., condition of supports is adequate and fill conditions of cable trays appear to be inside acceptable limits)? Yes
  
  4. Does it appear that the area is free of potentially adverse seismic spatial interactions with other equipment in the area (e.g., ceiling tiles and lighting)? Yes
  
  5. Does it appear that the area is free of potentially adverse seismic interactions that could cause flooding or spray in the area?  
*Fire protection piping is well-supported* Yes
  
  6. Does it appear that the area is free of potentially adverse seismic interactions that could cause a fire in the area? Yes
  
  7. Does it appear that the area is free of potentially adverse seismic interactions associated with housekeeping practices, storage of portable equipment, and temporary installations (e.g., scaffolding, lead shielding)? Yes
-

Status:  Y  N  U

**Area Walk-By Checklist (AWC)**

Location (Bldg, Elev, Room/Area): Area Walk-by 11

---

8. Have you looked for and found no other seismic conditions that could adversely affect the safety functions of the equipment in the area? Yes  
*Seismic block walls.*  
*Ladder storage area at east wall EI 463 - all ladders are adequately chained*

---

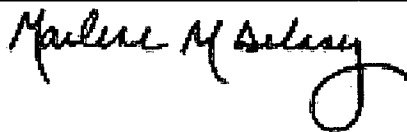
**Comments**

Seismic walkdown team M. Delaney & P. Gazda 7/31/12 am

Aux, EI 451 and 463, OB VC Room (0VC16J, 0VC01JB)

---

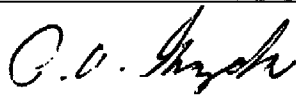
Evaluated by:



Marlene Delaney

Date: 10/1/2012

---



Philip Gazda

10/1/2012

---

---

**Photos**

None.

---

Status:  Y  N  U

### Area Walk-By Checklist (AWC)

Location (Bldg, Elev, Room/Area): Area Walk-by 12

---

#### Instructions for Completing Checklist

This checklist may be used to document the results of the Area Walk-By near one or more SWEL items. The space below each of the following questions may be used to record the results of judgments and findings. Additional space is provided at the end of this checklist for documenting other comments.

---

1. Does anchorage of equipment in the area appear to be free of potentially adverse seismic conditions (if visible without necessarily opening cabinets)? Yes  
*Cabinets all welded with welds similar or identical to the SWC cabinets*
  
  2. Does anchorage of equipment in the area appear to be free of significant degraded conditions? Yes
  
  3. Based on a visual inspection from the floor, do the cable/conduit raceways and HVAC ducting appear to be free of potentially adverse seismic conditions (e.g., condition of supports is adequate and fill conditions of cable trays appear to be inside acceptable limits)? Yes  
*All overhead items are well-supported*
  
  4. Does it appear that the area is free of potentially adverse seismic spatial interactions with other equipment in the area (e.g., ceiling tiles and lighting)? Yes  
*Well-supported overhead items*  
*No bulb guards but if lights fell they would not damage equipment*  
*Lights are supported on rods S&L Std E-103 -ok*
  
  5. Does it appear that the area is free of potentially adverse seismic interactions that could cause flooding or spray in the area? Yes
  
  6. Does it appear that the area is free of potentially adverse seismic interactions that could cause a fire in the area? Yes
  
  7. Does it appear that the area is free of potentially adverse seismic interactions associated with housekeeping practices, storage of portable equipment, and temporary installations (e.g., scaffolding, lead shielding)? Yes
-



Status:  Y  N  U

**Area Walk-By Checklist (AWC)**

Location (Bldg, Elev, Room/Area): Area Walk-by 12

---

8. Have you looked for and found no other seismic conditions that could adversely affect the safety functions of the equipment in the area? Yes  
*MESAC between 2PA11J and 2PA13J is shimmed and tied off to a support - not an issue.*  
*Gap between 2PA12J and 2PA54J is equal to approximately 5/8". Per Calculation BRW-99-0318-E, gap required is 0.149" therefore not an issue.*  
*Non-safety cabinets in room are not connected but not an issue.*
- 

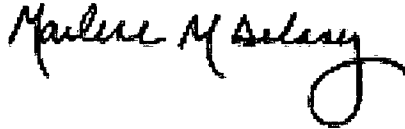
**Comments**

Seismic walkdown team M. Delaney & P. Gazda 7/31/12 am

Aux, El. 451, Aux Electric Equipment Room (2IP01J, 2PA03J, 2PA09J,2PA27J)

---

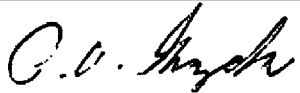
Evaluated by:



Marlene Delaney

Date: 10/1/2012

---



Philip Gazda

10/1/2012

---

**Photos**

None.

---

Status:  Y  N  U

### Area Walk-By Checklist (AWC)

Location (Bldg, Elev, Room/Area): Area Walk-by 13

---

#### Instructions for Completing Checklist

This checklist may be used to document the results of the Area Walk-By near one or more SWEL items. The space below each of the following questions may be used to record the results of judgments and findings. Additional space is provided at the end of this checklist for documenting other comments.

---

1. Does anchorage of equipment in the area appear to be free of potentially adverse seismic conditions (if visible without necessarily opening cabinets)? Yes
  
  2. Does anchorage of equipment in the area appear to be free of significant degraded conditions? Yes
  
  3. Based on a visual inspection from the floor, do the cable/conduit raceways and HVAC ducting appear to be free of potentially adverse seismic conditions (e.g., condition of supports is adequate and fill conditions of cable trays appear to be inside acceptable limits)? Yes
  
  4. Does it appear that the area is free of potentially adverse seismic spatial interactions with other equipment in the area (e.g., ceiling tiles and lighting)? Yes  
*Seismic block walls*  
*Overhead ceiling tiles are lightweight metal and would not damage equipment or harm personnel if they fell*
  
  5. Does it appear that the area is free of potentially adverse seismic interactions that could cause flooding or spray in the area? Yes  
*No sprinkler piping*
  
  6. Does it appear that the area is free of potentially adverse seismic interactions that could cause a fire in the area? Yes
  
  7. Does it appear that the area is free of potentially adverse seismic interactions associated with housekeeping practices, storage of portable equipment, and temporary installations (e.g., scaffolding, lead shielding)? Yes
-

Status:  Y  N  U

**Area Walk-By Checklist (AWC)**

Location (Bldg, Elev, Room/Area): Area Walk-by 13

---

8. Have you looked for and found no other seismic conditions that could adversely affect the safety functions of the equipment in the area? Yes

---

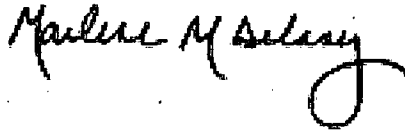
**Comments**

Seismic walkdown team M. Delaney & P. Gazda 7/31/12 am

Aux EI 451, Unit 2 Control Room

---

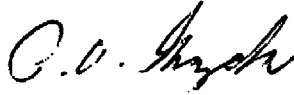
Evaluated by:



Marlene Delaney

Date: 10/1/2012

---



Philip Gazda

10/1/2012

---

---

**Photos**

None.

---

Status:  Y  N  U

**Area Walk-By Checklist (AWC)**

Location (Bldg, Elev, Room/Area): Area Walk-by 14

---

**Instructions for Completing Checklist**

This checklist may be used to document the results of the Area Walk-By near one or more SWEL items. The space below each of the following questions may be used to record the results of judgments and findings. Additional space is provided at the end of this checklist for documenting other comments.

---

1. Does anchorage of equipment in the area appear to be free of potentially adverse seismic conditions (if visible without necessarily opening cabinets)? Yes
  
  2. Does anchorage of equipment in the area appear to be free of significant degraded conditions? Yes
  
  3. Based on a visual inspection from the floor, do the cable/conduit raceways and HVAC ducting appear to be free of potentially adverse seismic conditions (e.g., condition of supports is adequate and fill conditions of cable trays appear to be inside acceptable limits)? Yes
  
  4. Does it appear that the area is free of potentially adverse seismic spatial interactions with other equipment in the area (e.g., ceiling tiles and lighting)?  
*Seismic block walls* Yes
  
  5. Does it appear that the area is free of potentially adverse seismic interactions that could cause flooding or spray in the area? Yes
  
  6. Does it appear that the area is free of potentially adverse seismic interactions that could cause a fire in the area? Yes
  
  7. Does it appear that the area is free of potentially adverse seismic interactions associated with housekeeping practices, storage of portable equipment, and temporary installations (e.g., scaffolding, lead shielding)? Yes
-



Status:  Y  N  U

**Area Walk-By Checklist (AWC)**

Location (Bldg, Elev, Room/Area): Area Walk-by 14

---

8. Have you looked for and found no other seismic conditions that could adversely affect the safety functions of the equipment in the area? Yes  
*Note that there is a vertical crack in the south wall near Col P-11 at EI 463*

---

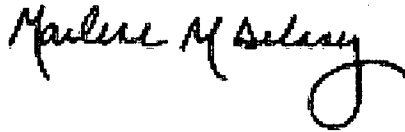
**Comments**

Seismic walkdown team M. Delaney & P. Gazda 7/31/12 pm

Aux EI 451, OA VC Room (0VC02FA)

---

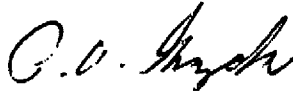
Evaluated by:



Marlene Delaney

Date: 10/1/2012

---



Philip Gazda

10/1/2012

---

---

**Photos**

None.

---

Status:  Y  N  U

### Area Walk-By Checklist (AWC)

Location (Bldg, Elev, Room/Area): Area Walk-by 15

---

#### Instructions for Completing Checklist

This checklist may be used to document the results of the Area Walk-By near one or more SWEL items. The space below each of the following questions may be used to record the results of judgments and findings. Additional space is provided at the end of this checklist for documenting other comments.

---

1. Does anchorage of equipment in the area appear to be free of potentially adverse seismic conditions (if visible without necessarily opening cabinets)? Yes
  
  2. Does anchorage of equipment in the area appear to be free of significant degraded conditions? Yes
  
  3. Based on a visual inspection from the floor, do the cable/conduit raceways and HVAC ducting appear to be free of potentially adverse seismic conditions (e.g., condition of supports is adequate and fill conditions of cable trays appear to be inside acceptable limits)? Yes  
*Overhead components (HVAC, cable trays) are well-supported*
  
  4. Does it appear that the area is free of potentially adverse seismic spatial interactions with other equipment in the area (e.g., ceiling tiles and lighting)? Yes  
*No bulb guards on rod hung lights but if lights fell they would not damage equipment OK per S&L Std EE-103*
  
  5. Does it appear that the area is free of potentially adverse seismic interactions that could cause flooding or spray in the area? Yes
  
  6. Does it appear that the area is free of potentially adverse seismic interactions that could cause a fire in the area? Yes
  
  7. Does it appear that the area is free of potentially adverse seismic interactions associated with housekeeping practices, storage of portable equipment, and temporary installations (e.g., scaffolding, lead shielding)? Yes
-

Status:  Y  N  U

**Area Walk-By Checklist (AWC)**

Location (Bldg, Elev, Room/Area): Area Walk-by 15

---

8. Have you looked for and found no other seismic conditions that could adversely affect the safety functions of the equipment in the area? Yes  
*Vertical crack in wall near Col P-26*

---

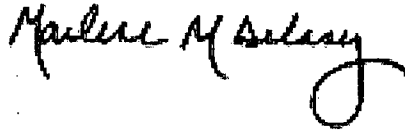
**Comments**

Seismic walkdown team M. Delaney & P. Gazda 7/31/12 pm

Aux EI 426, Division 21 ESF (2AP05E, 2AP10E, 2DG04EA)

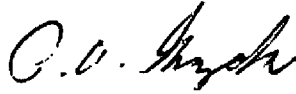
---

Evaluated by:



Marlene Delaney

Date: 10/1/2012



Philip Gazda

10/1/2012

---

**Photos**

None.

---

Status:  Y  N  U

**Area Walk-By Checklist (AWC)**

Location (Bldg, Elev, Room/Area): Area Walk-by 16

---

**Instructions for Completing Checklist**

This checklist may be used to document the results of the Area Walk-By near one or more SWEL items. The space below each of the following questions may be used to record the results of judgments and findings. Additional space is provided at the end of this checklist for documenting other comments.

---

1. Does anchorage of equipment in the area appear to be free of potentially adverse seismic conditions (if visible without necessarily opening cabinets)? Yes
  
  2. Does anchorage of equipment in the area appear to be free of significant degraded conditions? Yes
  
  3. Based on a visual inspection from the floor, do the cable/conduit raceways and HVAC ducting appear to be free of potentially adverse seismic conditions (e.g., condition of supports is adequate and fill conditions of cable trays appear to be inside acceptable limits)? Yes
  
  4. Does it appear that the area is free of potentially adverse seismic spatial interactions with other equipment in the area (e.g., ceiling tiles and lighting)? Yes
  
  5. Does it appear that the area is free of potentially adverse seismic interactions that could cause flooding or spray in the area? Yes
  
  6. Does it appear that the area is free of potentially adverse seismic interactions that could cause a fire in the area? Yes
-



Status:  Y  N  U

**Area Walk-By Checklist (AWC)**

Location (Bldg, Elev, Room/Area): Area Walk-by 16

- 
7. Does it appear that the area is free of potentially adverse seismic interactions associated with housekeeping practices, storage of portable equipment, and temporary installations (e.g., scaffolding, lead shielding)? Yes  
*No bulb guards on lights but rod hung lights would not damage equipment if they fell S&L Std E-103 -ok*  
  
*Two scaffolds in area are well tied off and not near equipment*  
  
*Operation Department switchgear equipment storage locker near non-safety equipment,, placard notes that it is acceptable per EC 348959*
8. Have you looked for and found no other seismic conditions that could adversely affect the safety functions of the equipment in the area? Yes

---

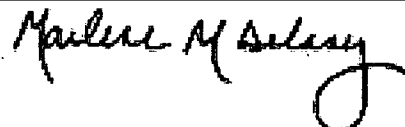
**Comments**

Seismic walkdown team M. Delaney & P. Gazda 7/31/12 pm

Aux EI 426, ESF Switchgear Room Division 22 (2AP06E, 2AP12E, 2AP13E, 2VX07J)

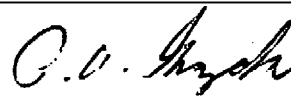
---

Evaluated by:



Marlene Delaney

Date: 10/1/2012



Philip Gazda

10/1/2012

---

**Photos**

None.

Status:  Y  N  U

**Area Walk-By Checklist (AWC)**

Location (Bldg, Elev, Room/Area): Area Walk-by 17

---

**Instructions for Completing Checklist**

This checklist may be used to document the results of the Area Walk-By near one or more SWEL items. The space below each of the following questions may be used to record the results of judgments and findings. Additional space is provided at the end of this checklist for documenting other comments.

---

1. Does anchorage of equipment in the area appear to be free of potentially adverse seismic conditions (if visible without necessarily opening cabinets)? Yes
  
  2. Does anchorage of equipment in the area appear to be free of significant degraded conditions? Yes
  
  3. Based on a visual inspection from the floor, do the cable/conduit raceways and HVAC ducting appear to be free of potentially adverse seismic conditions (e.g., condition of supports is adequate and fill conditions of cable trays appear to be inside acceptable limits)? Yes
  
  4. Does it appear that the area is free of potentially adverse seismic spatial interactions with other equipment in the area (e.g., ceiling tiles and lighting)?  
*Well-supported gallery overhead* Yes
  
  5. Does it appear that the area is free of potentially adverse seismic interactions that could cause flooding or spray in the area? Yes
  
  6. Does it appear that the area is free of potentially adverse seismic interactions that could cause a fire in the area? Yes
  
  7. Does it appear that the area is free of potentially adverse seismic interactions associated with housekeeping practices, storage of portable equipment, and temporary installations (e.g., scaffolding, lead shielding)? Yes
-

Status:  Y  N  U

**Area Walk-By Checklist (AWC)**

Location (Bldg, Elev, Room/Area): Area Walk-by 17

---

8. Have you looked for and found no other seismic conditions that could adversely affect the safety functions of the equipment in the area? Yes

---

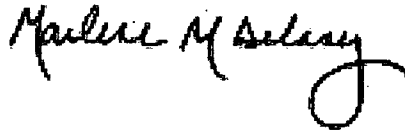
**Comments**

Seismic walkdown team M. Delaney & P. Gazda 7/31/12 pm

Aux, El. 401 2VD01CA Room

---


Evaluated by:



Marlene Delaney

Date: 10/1/2012

---



Philip Gazda

10/1/2012

---

---

**Photos**

None.

---

Status:  Y  N  U

**Area Walk-By Checklist (AWC)**

Location (Bldg, Elev, Room/Area): Area Walk-by 18

---

**Instructions for Completing Checklist**

This checklist may be used to document the results of the Area Walk-By near one or more SWEL items. The space below each of the following questions may be used to record the results of judgments and findings. Additional space is provided at the end of this checklist for documenting other comments.

---

1. Does anchorage of equipment in the area appear to be free of potentially adverse seismic conditions (if visible without necessarily opening cabinets)? Yes
  
  2. Does anchorage of equipment in the area appear to be free of significant degraded conditions? Yes
  
  3. Based on a visual inspection from the floor, do the cable/conduit raceways and HVAC ducting appear to be free of potentially adverse seismic conditions (e.g., condition of supports is adequate and fill conditions of cable trays appear to be inside acceptable limits)? Yes
  
  4. Does it appear that the area is free of potentially adverse seismic spatial interactions with other equipment in the area (e.g., ceiling tiles and lighting)? Yes
  
  5. Does it appear that the area is free of potentially adverse seismic interactions that could cause flooding or spray in the area? Yes
  
  6. Does it appear that the area is free of potentially adverse seismic interactions that could cause a fire in the area? Yes
-



Status:  Y  N  U

**Area Walk-By Checklist (AWC)**

Location (Bldg, Elev, Room/Area): Area Walk-by 18

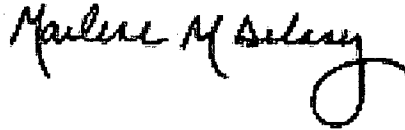
7. Does it appear that the area is free of potentially adverse seismic interactions associated with housekeeping practices, storage of portable equipment, and temporary installations (e.g., scaffolding, lead shielding)? Yes  
*Phone cabinet is chained to support*
8. Have you looked for and found no other seismic conditions that could adversely affect the safety functions of the equipment in the area? Yes

**Comments**

Seismic walkdown team M. Delaney & P. Gazda 7/31/12 pm

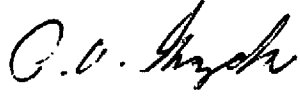
Aux EI 401, DG 2A Room (2DG01KA, 2PL07J, 2SX169A, 2VD04J)

Evaluated by:



Marlene Delaney

Date: 10/1/2012



Philip Gazda

10/1/2012

**Photos**

None.

Status:  Y  N  U

**Area Walk-By Checklist (AWC)**

Location (Bldg, Elev, Room/Area): Area Walk-by 19

---

**Instructions for Completing Checklist**

This checklist may be used to document the results of the Area Walk-By near one or more SWEL items. The space below each of the following questions may be used to record the results of judgments and findings. Additional space is provided at the end of this checklist for documenting other comments.

---

1. Does anchorage of equipment in the area appear to be free of potentially adverse seismic conditions (if visible without necessarily opening cabinets)? Yes
  
  2. Does anchorage of equipment in the area appear to be free of significant degraded conditions? Yes
  
  3. Based on a visual inspection from the floor, do the cable/conduit raceways and HVAC ducting appear to be free of potentially adverse seismic conditions (e.g., condition of supports is adequate and fill conditions of cable trays appear to be inside acceptable limits)? Yes
  
  4. Does it appear that the area is free of potentially adverse seismic spatial interactions with other equipment in the area (e.g., ceiling tiles and lighting)? Yes
  
  5. Does it appear that the area is free of potentially adverse seismic interactions that could cause flooding or spray in the area? Yes
  
  6. Does it appear that the area is free of potentially adverse seismic interactions that could cause a fire in the area? Yes
-

Status:  Y  N  U

**Area Walk-By Checklist (AWC)**

Location (Bldg, Elev, Room/Area): Area Walk-by 19

- 
7. Does it appear that the area is free of potentially adverse seismic interactions associated with housekeeping practices, storage of portable equipment, and temporary installations (e.g., scaffolding, lead shielding)? Yes  
*Phone cabinet is chained to support*  
*Overhead HVAC is well-supported*  
*Seismic Block Walls*  
*Scaffold is tied off, good standoffs and braced*
8. Have you looked for and found no other seismic conditions that could adversely affect the safety functions of the equipment in the area? Yes  
*Small cracks in south wall*
- 

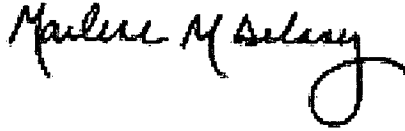
**Comments**

Seismic walkdown team M. Delaney & P. Gazda 7/31/12 pm

Aux EI 401, 2B Diesel Generator Room (2PL08J)

---

Evaluated by:



Marlene Delaney

Date: 10/1/2012

---



Philip Gazda

10/1/2012

---

**Photos**

None.

---

Status:  Y  N  U

### Area Walk-By Checklist (AWC)

Location (Bldg, Elev, Room/Area): Area Walk-by 20

---

#### Instructions for Completing Checklist

This checklist may be used to document the results of the Area Walk-By near one or more SWEL items. The space below each of the following questions may be used to record the results of judgments and findings. Additional space is provided at the end of this checklist for documenting other comments.

---

1. Does anchorage of equipment in the area appear to be free of potentially adverse seismic conditions (if visible without necessarily opening cabinets)? Yes
  
  2. Does anchorage of equipment in the area appear to be free of significant degraded conditions? Yes
  
  3. Based on a visual inspection from the floor, do the cable/conduit raceways and HVAC ducting appear to be free of potentially adverse seismic conditions (e.g., condition of supports is adequate and fill conditions of cable trays appear to be inside acceptable limits)? Yes
  
  4. Does it appear that the area is free of potentially adverse seismic spatial interactions with other equipment in the area (e.g., ceiling tiles and lighting)? Yes  
*Permanent scaffold at 2 locations is well-supported, tied off, and braced*  
*Ladder flat on ground wouldn't damage nearby equipment*  
*Chain fall on tube steel hanger near the ceiling (IR 1396593) - removed on 8/1/12*
  
  5. Does it appear that the area is free of potentially adverse seismic interactions that could cause flooding or spray in the area? Yes
  
  6. Does it appear that the area is free of potentially adverse seismic interactions that could cause a fire in the area? Yes
  
  7. Does it appear that the area is free of potentially adverse seismic interactions associated with housekeeping practices, storage of portable equipment, and temporary installations (e.g., scaffolding, lead shielding)? Yes
-

Status:  Y  N  U

**Area Walk-By Checklist (AWC)**

Location (Bldg, Elev, Room/Area): Area Walk-by 20

---

8. Have you looked for and found no other seismic conditions that could adversely affect the safety functions of the equipment in the area? Yes

---

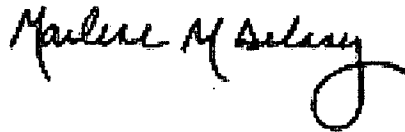
**Comments**

Seismic walkdown team M. Delaney & P. Gazda 8/1/12 am

Aux EI 401, MSIV 2A-2D Room (2MS018D)

---

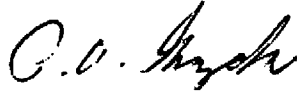
Evaluated by:



Marlene Delaney

Date: 10/1/2012

---



Philip Gazda

10/1/2012

---

---

**Photos**

None.

---



Status:  Y  N  U

### Area Walk-By Checklist (AWC)

Location (Bldg, Elev, Room/Area): Area Walk-by 21

---

#### Instructions for Completing Checklist

This checklist may be used to document the results of the Area Walk-By near one or more SWEL items. The space below each of the following questions may be used to record the results of judgments and findings. Additional space is provided at the end of this checklist for documenting other comments.

---

1. Does anchorage of equipment in the area appear to be free of potentially adverse seismic conditions (if visible without necessarily opening cabinets)? Yes
  
  2. Does anchorage of equipment in the area appear to be free of significant degraded conditions? Yes
  
  3. Based on a visual inspection from the floor, do the cable/conduit raceways and HVAC ducting appear to be free of potentially adverse seismic conditions (e.g., condition of supports is adequate and fill conditions of cable trays appear to be inside acceptable limits)? Yes
  
  4. Does it appear that the area is free of potentially adverse seismic spatial interactions with other equipment in the area (e.g., ceiling tiles and lighting)? Yes
  
  5. Does it appear that the area is free of potentially adverse seismic interactions that could cause flooding or spray in the area? Yes
  
  6. Does it appear that the area is free of potentially adverse seismic interactions that could cause a fire in the area? Yes
-

Status:  Y  N  U

**Area Walk-By Checklist (AWC)**

Location (Bldg, Elev, Room/Area): Area Walk-by 21

- 
7. Does it appear that the area is free of potentially adverse seismic interactions associated with housekeeping practices, storage of portable equipment, and temporary installations (e.g., scaffolding, lead shielding)? Yes  
*Ladders stored in ladder storage area and are chained*
8. Have you looked for and found no other seismic conditions that could adversely affect the safety functions of the equipment in the area? Yes  
*Small cracks on south wall near 2JB1583A*

---

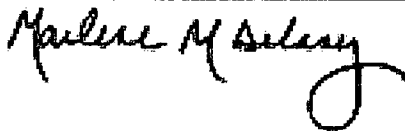
**Comments**

Seismic walkdown team M. Delaney & P. Gazda 8/1/12 am

EI 377 2A-2D MSIV Room (2PT-0514, 2PT-0546)

---

Evaluated by:



Marlene Delaney

Date: 10/1/2012



Philip Gazda

10/1/2012

---

**Photos**

None.

Status:  Y  N  U

**Area Walk-By Checklist (AWC)**

Location (Bldg, Elev, Room/Area): Area Walk-by 22

---

**Instructions for Completing Checklist**

This checklist may be used to document the results of the Area Walk-By near one or more SWEL items. The space below each of the following questions may be used to record the results of judgments and findings. Additional space is provided at the end of this checklist for documenting other comments.

---

1. Does anchorage of equipment in the area appear to be free of potentially adverse seismic conditions (if visible without necessarily opening cabinets)? Yes
  
  2. Does anchorage of equipment in the area appear to be free of significant degraded conditions? Yes
  
  3. Based on a visual inspection from the floor, do the cable/conduit raceways and HVAC ducting appear to be free of potentially adverse seismic conditions (e.g., condition of supports is adequate and fill conditions of cable trays appear to be inside acceptable limits)? Yes
  
  4. Does it appear that the area is free of potentially adverse seismic spatial interactions with other equipment in the area (e.g., ceiling tiles and lighting)? Yes
  
  5. Does it appear that the area is free of potentially adverse seismic interactions that could cause flooding or spray in the area? Yes
  
  6. Does it appear that the area is free of potentially adverse seismic interactions that could cause a fire in the area? Yes
-

Status:  Y  N  U

**Area Walk-By Checklist (AWC)**

Location (Bldg, Elev, Room/Area): Area Walk-by 22

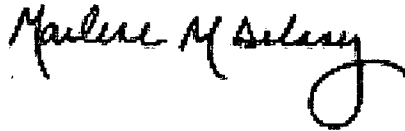
7. Does it appear that the area is free of potentially adverse seismic interactions associated with housekeeping practices, storage of portable equipment, and temporary installations (e.g., scaffolding, lead shielding)? Yes  
*Two permanent scaffolds are well supported and tied off*
8. Have you looked for and found no other seismic conditions that could adversely affect the safety functions of the equipment in the area? Yes  
*Expansion joint between containment and room ceiling is degraded. Not a structural or seismic issue.*

**Comments**

Seismic walkdown team M. Delaney & P. Gazda 8/1/12 am

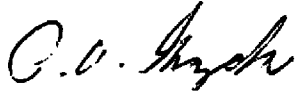
EI 377 2B-2C MSIV Room

Evaluated by:



Marlene Delaney

Date: 10/1/2012



Philip Gazda

10/1/2012

**Photos**

None.

Status:  Y  N  U

### Area Walk-By Checklist (AWC)

Location (Bldg, Elev, Room/Area): Area Walk-by 23

---

#### Instructions for Completing Checklist

This checklist may be used to document the results of the Area Walk-By near one or more SWEL items. The space below each of the following questions may be used to record the results of judgments and findings. Additional space is provided at the end of this checklist for documenting other comments.

---

1. Does anchorage of equipment in the area appear to be free of potentially adverse seismic conditions (if visible without necessarily opening cabinets)? Yes
  
  2. Does anchorage of equipment in the area appear to be free of significant degraded conditions? Yes
  
  3. Based on a visual inspection from the floor, do the cable/conduit raceways and HVAC ducting appear to be free of potentially adverse seismic conditions (e.g., condition of supports is adequate and fill conditions of cable trays appear to be inside acceptable limits)? Yes
  
  4. Does it appear that the area is free of potentially adverse seismic spatial interactions with other equipment in the area (e.g., ceiling tiles and lighting)? Yes
  
  5. Does it appear that the area is free of potentially adverse seismic interactions that could cause flooding or spray in the area? Yes
  
  6. Does it appear that the area is free of potentially adverse seismic interactions that could cause a fire in the area? Yes
-



Status:  Y  N  U

**Area Walk-By Checklist (AWC)**

Location (Bldg, Elev, Room/Area): Area Walk-by 23

- 
- |  |     |
|--|-----|
| 7. Does it appear that the area is free of potentially adverse seismic interactions associated with housekeeping practices, storage of portable equipment, and temporary installations (e.g., scaffolding, lead shielding)?<br><i>Gas bottles are behind wall and well-secured</i><br><i>Near-by cart has chocked wheels and adequate standoff distance</i><br><i>Near-by rad monitors have large base which would prevent tipping and damage to equipment</i> | Yes |
| 8. Have you looked for and found no other seismic conditions that could adversely affect the safety functions of the equipment in the area?  | Yes |

---

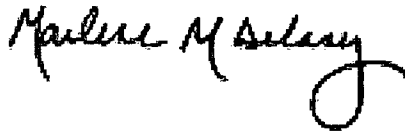
**Comments**

Seismic walkdown team M. Delaney & P. Gazda 8/1/12 am

Aux EI 401 (near access point) (2AP22E)

---

Evaluated by:



Marlene Delaney

Date: 10/1/2012



Philip Gazda

10/1/2012

---

**Photos**

None.

Status:  Y  N  U

### Area Walk-By Checklist (AWC)

Location (Bldg, Elev, Room/Area): Area Walk-by 24

---

#### Instructions for Completing Checklist

This checklist may be used to document the results of the Area Walk-By near one or more SWEL items. The space below each of the following questions may be used to record the results of judgments and findings. Additional space is provided at the end of this checklist for documenting other comments.

---

1. Does anchorage of equipment in the area appear to be free of potentially adverse seismic conditions (if visible without necessarily opening cabinets)? Yes
  
  2. Does anchorage of equipment in the area appear to be free of significant degraded conditions? Yes
  
  3. Based on a visual inspection from the floor, do the cable/conduit raceways and HVAC ducting appear to be free of potentially adverse seismic conditions (e.g., condition of supports is adequate and fill conditions of cable trays appear to be inside acceptable limits)? Yes
  
  4. Does it appear that the area is free of potentially adverse seismic spatial interactions with other equipment in the area (e.g., ceiling tiles and lighting)?  
*Seismic block walls* Yes
  
  5. Does it appear that the area is free of potentially adverse seismic interactions that could cause flooding or spray in the area?  
*Fire protection piping is well-supported* Yes
  
  6. Does it appear that the area is free of potentially adverse seismic interactions that could cause a fire in the area?  
*Sight glass is rugged, well-designed, and protected - attached piping is also well-supported. See photo with SWC 1AF01J.* Yes
  
  7. Does it appear that the area is free of potentially adverse seismic interactions associated with housekeeping practices, storage of portable equipment, and temporary installations (e.g., scaffolding, lead shielding)? Yes
-

Status:  Y  N  U

**Area Walk-By Checklist (AWC)**

Location (Bldg, Elev, Room/Area): Area Walk-by 24

---

8. Have you looked for and found no other seismic conditions that could adversely affect the safety functions of the equipment in the area? Yes  
*IR 01302735 was previously written to evaluate wires for AF Monitoring System attached to 2AF04J. Wires are adequately tied off and are not a seismic issue.*
- 

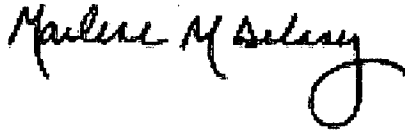
**Comments**

Seismic walkdown team M. Delaney & P. Gazda 8/1/12 am

Aux EI 383, 2B Aux Feedpump Room (2AF01EA-A, 2AF01J)

---


Evaluated by:



Marlene Delaney

Date: 10/1/2012

---



Philip Gazda

10/1/2012

---

**Photos**

None.

---

Status:  Y  N  U

### Area Walk-By Checklist (AWC)

Location (Bldg, Elev, Room/Area): Area Walk-by 25

---

#### Instructions for Completing Checklist

This checklist may be used to document the results of the Area Walk-By near one or more SWEL items. The space below each of the following questions may be used to record the results of judgments and findings. Additional space is provided at the end of this checklist for documenting other comments.

---

1. Does anchorage of equipment in the area appear to be free of potentially adverse seismic conditions (if visible without necessarily opening cabinets)? Yes
  
  2. Does anchorage of equipment in the area appear to be free of significant degraded conditions? Yes  
*Anchors at Panel 2PL85JA (west of 2AF01PA pump) have mild corrosion at the anchors (typ. for all 6 bolts). Judged to be acceptable.*
  
  3. Based on a visual inspection from the floor, do the cable/conduit raceways and HVAC ducting appear to be free of potentially adverse seismic conditions (e.g., condition of supports is adequate and fill conditions of cable trays appear to be inside acceptable limits)? Yes
  
  4. Does it appear that the area is free of potentially adverse seismic spatial interactions with other equipment in the area (e.g., ceiling tiles and lighting)? Yes  
*Seismic block walls*
  
  5. Does it appear that the area is free of potentially adverse seismic interactions that could cause flooding or spray in the area? Yes  
*Fire protection piping is well-supported*
  
  6. Does it appear that the area is free of potentially adverse seismic interactions that could cause a fire in the area? Yes
  
  7. Does it appear that the area is free of potentially adverse seismic interactions associated with housekeeping practices, storage of portable equipment, and temporary installations (e.g., scaffolding, lead shielding)? Yes
-

Status:  Y  N  U

**Area Walk-By Checklist (AWC)**

Location (Bldg, Elev, Room/Area): Area Walk-by 25

---

8. Have you looked for and found no other seismic conditions that could adversely affect the safety functions of the equipment in the area? Yes

---

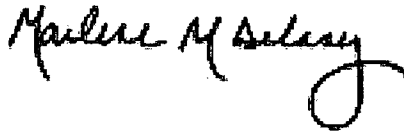
**Comments**

Seismic walkdown team M. Delaney & P. Gazda 8/1/12 am

Aux EI 383 near Cols M-18 and P-17 (2AF006A, 2AF017A, 2AF01PA, 2AF01PA-A)

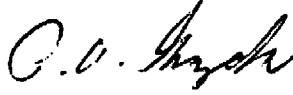
---

Evaluated by:



Marlene Delaney

Date: 10/1/2012



Philip Gazda

10/1/2012

---

**Photos**

None.

---



Status:  Y  N  U

### Area Walk-By Checklist (AWC)

Location (Bldg, Elev, Room/Area): Area Walk-by 26

---

#### Instructions for Completing Checklist

This checklist may be used to document the results of the Area Walk-By near one or more SWEL items. The space below each of the following questions may be used to record the results of judgments and findings. Additional space is provided at the end of this checklist for documenting other comments.

---

1. Does anchorage of equipment in the area appear to be free of potentially adverse seismic conditions (if visible without necessarily opening cabinets)? Yes
  
  2. Does anchorage of equipment in the area appear to be free of significant degraded conditions? Yes
  
  3. Based on a visual inspection from the floor, do the cable/conduit raceways and HVAC ducting appear to be free of potentially adverse seismic conditions (e.g., condition of supports is adequate and fill conditions of cable trays appear to be inside acceptable limits)? Yes
  
  4. Does it appear that the area is free of potentially adverse seismic spatial interactions with other equipment in the area (e.g., ceiling tiles and lighting)? Yes  
*Storage boxes are near valves OPS034 and OPS036 - verified that valves are non-safety related and therefore storage box location is acceptable*  
*Also storage box is near FP valve OFP361 however would not impact valve if it fell and is therefore acceptable.*  
*Ladder near valve 2AF005C is chained and located in ladder storage area.*  
*Scaffold issues documented in SWC for 2FT-AF0212.*
  5. Does it appear that the area is free of potentially adverse seismic interactions that could cause flooding or spray in the area? Yes
  
  6. Does it appear that the area is free of potentially adverse seismic interactions that could cause a fire in the area? Yes
-

Status:  Y  N  U

**Area Walk-By Checklist (AWC)**

Location (Bldg, Elev, Room/Area): Area Walk-by 26

- 
7. Does it appear that the area is free of potentially adverse seismic interactions associated with housekeeping practices, storage of portable equipment, and temporary installations (e.g., scaffolding, lead shielding)? Yes
8. Have you looked for and found no other seismic conditions that could adversely affect the safety functions of the equipment in the area? Yes

---

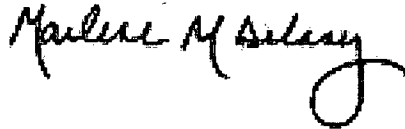
**Comments**

Seismic walkdown team M. Delaney & P. Gazda 8/1/12 am

Aux, EI 364 near Col M-26 (2AF006G, 2FT-AF012, 2AF005C)

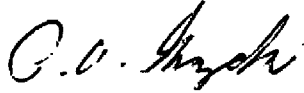
---

Evaluated by:



Marlene Delaney

Date: 10/1/2012



Philip Gazda

10/1/2012

---

**Photos**

None.

Status:  Y  N  U

### Area Walk-By Checklist (AWC)

Location (Bldg, Elev, Room/Area): Area Walk-by 27

---

#### Instructions for Completing Checklist

This checklist may be used to document the results of the Area Walk-By near one or more SWEL items. The space below each of the following questions may be used to record the results of judgments and findings. Additional space is provided at the end of this checklist for documenting other comments.

---

1. Does anchorage of equipment in the area appear to be free of potentially adverse seismic conditions (if visible without necessarily opening cabinets)? Yes
  
  2. Does anchorage of equipment in the area appear to be free of significant degraded conditions? Yes
  
  3. Based on a visual inspection from the floor, do the cable/conduit raceways and HVAC ducting appear to be free of potentially adverse seismic conditions (e.g., condition of supports is adequate and fill conditions of cable trays appear to be inside acceptable limits)? Yes  
*HVAC is well-supported*
  
  4. Does it appear that the area is free of potentially adverse seismic spatial interactions with other equipment in the area (e.g., ceiling tiles and lighting)? Yes
  
  5. Does it appear that the area is free of potentially adverse seismic interactions that could cause flooding or spray in the area? Yes  
*Fire protection piping is well-supported*
  
  6. Does it appear that the area is free of potentially adverse seismic interactions that could cause a fire in the area? Yes
-

Status:  Y  N  U

**Area Walk-By Checklist (AWC)**

Location (Bldg, Elev, Room/Area): Area Walk-by 27

7. Does it appear that the area is free of potentially adverse seismic interactions associated with housekeeping practices, storage of portable equipment, and temporary installations (e.g., scaffolding, lead shielding)? Yes  
*Ladder located in ladder storage area*

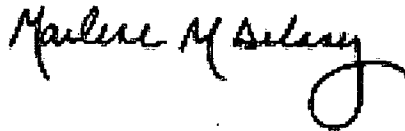
8. Have you looked for and found no other seismic conditions that could adversely affect the safety functions of the equipment in the area? Yes  
*Some floor degradation - not a structural/seismic issue*  
*Small diagonal crack in wall near Column M-13 (labeled BW#1A-04A) - crack is very small and not a structural/seismic issue (identified for NP-6695)*

**Comments**

Seismic walkdown team M. Delaney & P. Gazda 8/1/12 pm

Aux El 330 Essential Service Water Pump Room 1A/2A (2SX004 and others)

Evaluated by:



Marlene Delaney

Date: 10/1/2012



Philip Gazda

10/1/2012

**Photos**

None.

Status:  Y  N  U

### Area Walk-By Checklist (AWC)

Location (Bldg, Elev, Room/Area): Area Walk-by 28

---

#### Instructions for Completing Checklist

This checklist may be used to document the results of the Area Walk-By near one or more SWEL items. The space below each of the following questions may be used to record the results of judgments and findings. Additional space is provided at the end of this checklist for documenting other comments.

---

1. Does anchorage of equipment in the area appear to be free of potentially adverse seismic conditions (if visible without necessarily opening cabinets)? Yes
  
  2. Does anchorage of equipment in the area appear to be free of significant degraded conditions? Yes
  
  3. Based on a visual inspection from the floor, do the cable/conduit raceways and HVAC ducting appear to be free of potentially adverse seismic conditions (e.g., condition of supports is adequate and fill conditions of cable trays appear to be inside acceptable limits)? Yes  
*Overhead components are well-supported.*
  
  4. Does it appear that the area is free of potentially adverse seismic spatial interactions with other equipment in the area (e.g., ceiling tiles and lighting)? Yes
  
  5. Does it appear that the area is free of potentially adverse seismic interactions that could cause flooding or spray in the area? Yes
  
  6. Does it appear that the area is free of potentially adverse seismic interactions that could cause a fire in the area? Yes
  
  7. Does it appear that the area is free of potentially adverse seismic interactions associated with housekeeping practices, storage of portable equipment, and temporary installations (e.g., scaffolding, lead shielding)? Yes
-

Status:  Y  N  U

**Area Walk-By Checklist (AWC)**

Location (Bldg, Elev, Room/Area): Area Walk-by 28

---

8. Have you looked for and found no other seismic conditions that could adversely affect the safety functions of the equipment in the area? Yes

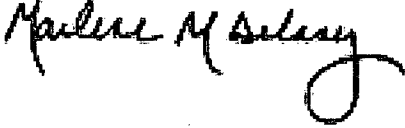
---

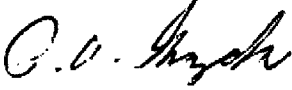
**Comments**

Seismic walkdown team M. Delaney & P. Gazda 8/1/12 pm

Aux El. 330 (ESW Pump Rm 1B/2B - 2SX005)

---

Evaluated by:  Marlene Delaney Date: 10/1/2012

 Philip Gazda 10/1/2012

---

**Photos**

None.

---



Status:  Y  N  U

**Area Walk-By Checklist (AWC)**

Location (Bldg, Elev, Room/Area): Area Walk-by 29

---

**Instructions for Completing Checklist**

This checklist may be used to document the results of the Area Walk-By near one or more SWEL items. The space below each of the following questions may be used to record the results of judgments and findings. Additional space is provided at the end of this checklist for documenting other comments.

---

1. Does anchorage of equipment in the area appear to be free of potentially adverse seismic conditions (if visible without necessarily opening cabinets)? Yes
  
  2. Does anchorage of equipment in the area appear to be free of significant degraded conditions? Yes
  
  3. Based on a visual inspection from the floor, do the cable/conduit raceways and HVAC ducting appear to be free of potentially adverse seismic conditions (e.g., condition of supports is adequate and fill conditions of cable trays appear to be inside acceptable limits)? Yes  
*All components well-supported*
  
  4. Does it appear that the area is free of potentially adverse seismic spatial interactions with other equipment in the area (e.g., ceiling tiles and lighting)? Yes
  
  5. Does it appear that the area is free of potentially adverse seismic interactions that could cause flooding or spray in the area? Yes
  
  6. Does it appear that the area is free of potentially adverse seismic interactions that could cause a fire in the area? Yes
  
  7. Does it appear that the area is free of potentially adverse seismic interactions associated with housekeeping practices, storage of portable equipment, and temporary installations (e.g., scaffolding, lead shielding)? Yes
-

Status:  Y  N  U

**Area Walk-By Checklist (AWC)**

Location (Bldg, Elev, Room/Area): Area Walk-by 29

---

8. Have you looked for and found no other seismic conditions that could adversely affect the safety functions of the equipment in the area? Yes

---

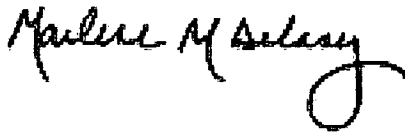
**Comments**

Seismic walkdown team M. Delaney & P. Gazda 8/2/12 am

Aux, EI 375 Curved Wall (2SI8801A, 2SI8801B)

---

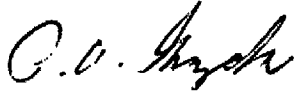
Evaluated by:



Marlene Delaney

Date: 10/1/2012

---



Philip Gazda

10/1/2012

---

---

**Photos**

None.

---

Status:  Y  N  U

**Area Walk-By Checklist (AWC)**

Location (Bldg, Elev, Room/Area): Area Walk-by 30

---

**Instructions for Completing Checklist**

This checklist may be used to document the results of the Area Walk-By near one or more SWEL items. The space below each of the following questions may be used to record the results of judgments and findings. Additional space is provided at the end of this checklist for documenting other comments.

---

1. Does anchorage of equipment in the area appear to be free of potentially adverse seismic conditions (if visible without necessarily opening cabinets)? Yes
  
  2. Does anchorage of equipment in the area appear to be free of significant degraded conditions? Yes
  
  3. Based on a visual inspection from the floor, do the cable/conduit raceways and HVAC ducting appear to be free of potentially adverse seismic conditions (e.g., condition of supports is adequate and fill conditions of cable trays appear to be inside acceptable limits)? Yes  
*All components are well-supported*
  
  4. Does it appear that the area is free of potentially adverse seismic spatial interactions with other equipment in the area (e.g., ceiling tiles and lighting)? Yes
  
  5. Does it appear that the area is free of potentially adverse seismic interactions that could cause flooding or spray in the area? Yes  
*No fire protection piping in area*
  
  6. Does it appear that the area is free of potentially adverse seismic interactions that could cause a fire in the area? Yes
  
  7. Does it appear that the area is free of potentially adverse seismic interactions associated with housekeeping practices, storage of portable equipment, and temporary installations (e.g., scaffolding, lead shielding)? Yes
-

Status:  Y  N  U

**Area Walk-By Checklist (AWC)**

Location (Bldg, Elev, Room/Area): Area Walk-by 30

---

8. Have you looked for and found no other seismic conditions that could adversely affect the safety functions of the equipment in the area? Yes  
*Boric acid on valve 2CV-8402B, equipment operator notified*

---

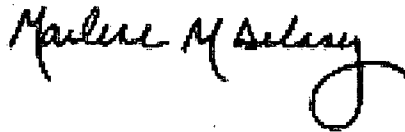
**Comments**

Seismic walkdown team M. Delaney & P. Gazda 8/2/12 am

Aux, Curved Wall Area 7, EI 401 (2FC8758,2CV8105, 2CV8106)

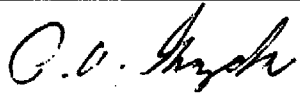
---

Evaluated by:



Marlene Delaney

Date: 10/1/2012



Philip Gazda

10/1/2012

---

**Photos**

None.

---

Status:  Y  N  U

### Area Walk-By Checklist (AWC)

Location (Bldg, Elev, Room/Area): Area Walk-by 31

---

#### Instructions for Completing Checklist

This checklist may be used to document the results of the Area Walk-By near one or more SWEL items. The space below each of the following questions may be used to record the results of judgments and findings. Additional space is provided at the end of this checklist for documenting other comments.

---

1. Does anchorage of equipment in the area appear to be free of potentially adverse seismic conditions (if visible without necessarily opening cabinets)? Yes
  
  2. Does anchorage of equipment in the area appear to be free of significant degraded conditions? Yes
  
  3. Based on a visual inspection from the floor, do the cable/conduit raceways and HVAC ducting appear to be free of potentially adverse seismic conditions (e.g., condition of supports is adequate and fill conditions of cable trays appear to be inside acceptable limits)? Yes
  
  4. Does it appear that the area is free of potentially adverse seismic spatial interactions with other equipment in the area (e.g., ceiling tiles and lighting)?  
*All components in area are well-supported* Yes
  
  5. Does it appear that the area is free of potentially adverse seismic interactions that could cause flooding or spray in the area?  
*Fire protection piping is well-supported* Yes
  
  6. Does it appear that the area is free of potentially adverse seismic interactions that could cause a fire in the area? Yes
  
  7. Does it appear that the area is free of potentially adverse seismic interactions associated with housekeeping practices, storage of portable equipment, and temporary installations (e.g., scaffolding, lead shielding)? Yes
-

Status:  Y  N  U

**Area Walk-By Checklist (AWC)**

Location (Bldg, Elev, Room/Area): Area Walk-by 31

---

8. Have you looked for and found no other seismic conditions that could adversely affect the safety functions of the equipment in the area? Yes

---

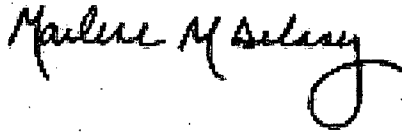
**Comments**

Seismic walkdown team M. Delaney & P. Gazda 8/2/12 am

Aux Area 7 EI 364 (2FC011)

---

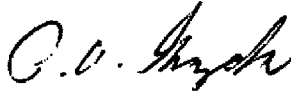
Evaluated by:



Marlene Delaney

Date: 10/1/2012

---



Philip Gazda

10/1/2012

---

---

**Photos**

None.

---



Status:  Y  N  U

### Area Walk-By Checklist (AWC)

Location (Bldg, Elev, Room/Area): Area Walk-by 32

---

#### Instructions for Completing Checklist

This checklist may be used to document the results of the Area Walk-By near one or more SWEL items. The space below each of the following questions may be used to record the results of judgments and findings. Additional space is provided at the end of this checklist for documenting other comments.

---

1. Does anchorage of equipment in the area appear to be free of potentially adverse seismic conditions (if visible without necessarily opening cabinets)? Yes
  
  2. Does anchorage of equipment in the area appear to be free of significant degraded conditions? Yes
  
  3. Based on a visual inspection from the floor, do the cable/conduit raceways and HVAC ducting appear to be free of potentially adverse seismic conditions (e.g., condition of supports is adequate and fill conditions of cable trays appear to be inside acceptable limits)? Yes  
*HVAC is well-supported*
  
  4. Does it appear that the area is free of potentially adverse seismic spatial interactions with other equipment in the area (e.g., ceiling tiles and lighting)? Yes
  
  5. Does it appear that the area is free of potentially adverse seismic interactions that could cause flooding or spray in the area? Yes
  
  6. Does it appear that the area is free of potentially adverse seismic interactions that could cause a fire in the area? Yes  
*Fire protection piping is well-supported*
-

Status:  Y  N  U

**Area Walk-By Checklist (AWC)**

Location (Bldg, Elev, Room/Area): Area Walk-by 32

7. Does it appear that the area is free of potentially adverse seismic interactions associated with housekeeping practices, storage of portable equipment, and temporary installations (e.g., scaffolding, lead shielding)? Yes  
*Ladder flat on floor and couldn't impact equipment*

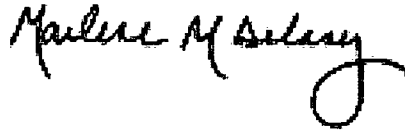
8. Have you looked for and found no other seismic conditions that could adversely affect the safety functions of the equipment in the area? Yes  
*Expansion joint at containment wall is cracked - not a structural/seismic issue (NP-6695 issue)*

**Comments**

Seismic walkdown team M. Delaney & P. Gazda 8/2/12 am

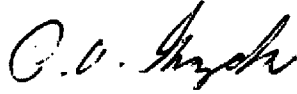
Aux, EI 451, near Col S-24 (2PT-0935)

Evaluated by:



Marlene Delaney

Date: 10/1/2012



Philip Gazda

10/1/2012

**Photos**

None.

Status:  Y  N  U

### Area Walk-By Checklist (AWC)

Location (Bldg, Elev, Room/Area): Area Walk-by 33

---

#### Instructions for Completing Checklist

This checklist may be used to document the results of the Area Walk-By near one or more SWEL items. The space below each of the following questions may be used to record the results of judgments and findings. Additional space is provided at the end of this checklist for documenting other comments.

---

1. Does anchorage of equipment in the area appear to be free of potentially adverse seismic conditions (if visible without necessarily opening cabinets)? Yes
  
  2. Does anchorage of equipment in the area appear to be free of significant degraded conditions? Yes
  
  3. Based on a visual inspection from the floor, do the cable/conduit raceways and HVAC ducting appear to be free of potentially adverse seismic conditions (e.g., condition of supports is adequate and fill conditions of cable trays appear to be inside acceptable limits)? Yes  
*Cable trays and HVAC are well-supported*
  
  4. Does it appear that the area is free of potentially adverse seismic spatial interactions with other equipment in the area (e.g., ceiling tiles and lighting)? Yes
  
  5. Does it appear that the area is free of potentially adverse seismic interactions that could cause flooding or spray in the area? Yes  
*Fire protection piping is well-supported*
  
  6. Does it appear that the area is free of potentially adverse seismic interactions that could cause a fire in the area? Yes  
*Hydrogen line is welded and well-supported in area*
-

Status:  Y  N  U

**Area Walk-By Checklist (AWC)**

Location (Bldg, Elev, Room/Area): Area Walk-by 33

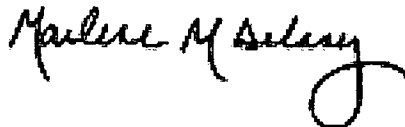
- 
7. Does it appear that the area is free of potentially adverse seismic interactions associated with housekeeping practices, storage of portable equipment, and temporary installations (e.g., scaffolding, lead shielding)? Yes  
*Scaffolding at drinking station is 1' away from rack and other components*
8. Have you looked for and found no other seismic conditions that could adversely affect the safety functions of the equipment in the area? Yes  
*Seismic block walls*

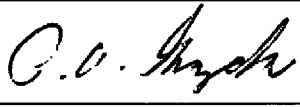
---

**Comments**

Seismic walkdown team M. Delaney & P. Gazda 8/2/12 am  
Aux EI 426, near Col Q-18 (2AP30E, 2AP32E)

---

Evaluated by:  Marlene Delaney Date: 10/1/2012

 Philip Gazda 10/1/2012

---

**Photos**

None.

---

Status:  Y  N  U

**Area Walk-By Checklist (AWC)**

Location (Bldg, Elev, Room/Area): Area Walk-by 34

---

**Instructions for Completing Checklist**

This checklist may be used to document the results of the Area Walk-By near one or more SWEL items. The space below each of the following questions may be used to record the results of judgments and findings. Additional space is provided at the end of this checklist for documenting other comments.

---

1. Does anchorage of equipment in the area appear to be free of potentially adverse seismic conditions (if visible without necessarily opening cabinets)? Yes
  
  2. Does anchorage of equipment in the area appear to be free of significant degraded conditions? Yes
  
  3. Based on a visual inspection from the floor, do the cable/conduit raceways and HVAC ducting appear to be free of potentially adverse seismic conditions (e.g., condition of supports is adequate and fill conditions of cable trays appear to be inside acceptable limits)? Yes
  
  4. Does it appear that the area is free of potentially adverse seismic spatial interactions with other equipment in the area (e.g., ceiling tiles and lighting)? Yes
  
  5. Does it appear that the area is free of potentially adverse seismic interactions that could cause flooding or spray in the area?  
*Fire protection piping is well-supported* Yes
  
  6. Does it appear that the area is free of potentially adverse seismic interactions that could cause a fire in the area? Yes
-

Status:  Y  N  U

**Area Walk-By Checklist (AWC)**

Location (Bldg, Elev, Room/Area): Area Walk-by 34

- 
- |    |   |     |
|----|---|-----|
| 7. | Does it appear that the area is free of potentially adverse seismic interactions associated with housekeeping practices, storage of portable equipment, and temporary installations (e.g., scaffolding, lead shielding)?<br><i>Ladder on floor - will not impact equipment if it moves</i><br><i>Scaffold adjacent to panel 2RY03EB is tied off and braced - can't impact adjacent equipment</i><br><i>Other scaffolds are acceptable with adequate tie-offs and clearances</i> | Yes |
| 8. | Have you looked for and found no other seismic conditions that could adversely affect the safety functions of the equipment in the area?  | Yes |
- 

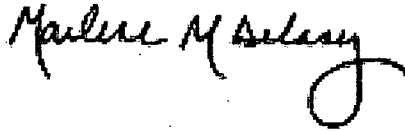
**Comments**

Seismic walkdown team M. Delaney & P. Gazda 8/2/12 pm

Aux EI 426 by Electrical Penetrations (2AP27E)

---

Evaluated by:



Marlene Delaney

Date: 10/1/2012

---



Philip Gazda

10/1/2012

---

**Photos**

None.

---



Status:  Y  N  U

### Area Walk-By Checklist (AWC)

Location (Bldg, Elev, Room/Area): Area Walk-by 35

---

#### Instructions for Completing Checklist

This checklist may be used to document the results of the Area Walk-By near one or more SWEL items. The space below each of the following questions may be used to record the results of judgments and findings. Additional space is provided at the end of this checklist for documenting other comments.

---

1. Does anchorage of equipment in the area appear to be free of potentially adverse seismic conditions (if visible without necessarily opening cabinets)? Yes
  
  2. Does anchorage of equipment in the area appear to be free of significant degraded conditions? Yes
  
  3. Based on a visual inspection from the floor, do the cable/conduit raceways and HVAC ducting appear to be free of potentially adverse seismic conditions (e.g., condition of supports is adequate and fill conditions of cable trays appear to be inside acceptable limits)? Yes  
*Overhead components are well-supported*
  
  4. Does it appear that the area is free of potentially adverse seismic spatial interactions with other equipment in the area (e.g., ceiling tiles and lighting)? Yes
  
  5. Does it appear that the area is free of potentially adverse seismic interactions that could cause flooding or spray in the area? Yes  
*Fire protection piping is well-supported*
  
  6. Does it appear that the area is free of potentially adverse seismic interactions that could cause a fire in the area? Yes  
*Hydrochlorite piping is well-supported with robust vertical and lateral supports*
-

Status:  Y  N  U

**Area Walk-By Checklist (AWC)**

Location (Bldg, Elev, Room/Area): Area Walk-by 35

- 
7. Does it appear that the area is free of potentially adverse seismic interactions associated with housekeeping practices, storage of portable equipment, and temporary installations (e.g., scaffolding, lead shielding)? Yes  
*Empty storage cart and storage cabinets are stored less than 3" away from seismic block wall (3A-22). IR 1396940 written to move cabinet and cart. Also near Recycle Monitor Tank but tank is welded all-around and robust.*  
  
*Other cabinets are stored more than 12" away from components.*  
  
*Ladder in area lying flat on ground.*
8. Have you looked for and found no other seismic conditions that could adversely affect the safety functions of the equipment in the area? Yes  
*Degradation at Column L-21 (previous equipment deficiency identified) - dispositioned as no issue*

---

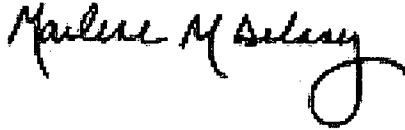
**Comments**

Seismic walkdown team M. Delaney & P. Gazda 8/2/12 pm

Aux EI 364 near Col M-23 (2CC01PA, 2CC01PB)

---

Evaluated by:



Marlene Delaney

Date: 10/1/2012



Philip Gazda

10/1/2012

---

**Photos**

None.

Status:  Y  N  U

### Area Walk-By Checklist (AWC)

Location (Bldg, Elev, Room/Area): Area Walk-by 36

---

#### Instructions for Completing Checklist

This checklist may be used to document the results of the Area Walk-By near one or more SWEL items. The space below each of the following questions may be used to record the results of judgments and findings. Additional space is provided at the end of this checklist for documenting other comments.

---

1. Does anchorage of equipment in the area appear to be free of potentially adverse seismic conditions (if visible without necessarily opening cabinets)? Yes
  
  2. Does anchorage of equipment in the area appear to be free of significant degraded conditions? Yes
  
  3. Based on a visual inspection from the floor, do the cable/conduit raceways and HVAC ducting appear to be free of potentially adverse seismic conditions (e.g., condition of supports is adequate and fill conditions of cable trays appear to be inside acceptable limits)? Yes  
*Overhead components are well-supported*
  
  4. Does it appear that the area is free of potentially adverse seismic spatial interactions with other equipment in the area (e.g., ceiling tiles and lighting)? Yes
  
  5. Does it appear that the area is free of potentially adverse seismic interactions that could cause flooding or spray in the area? Yes  
*Fire protection piping is well-supported*
  
  6. Does it appear that the area is free of potentially adverse seismic interactions that could cause a fire in the area? Yes
  
  7. Does it appear that the area is free of potentially adverse seismic interactions associated with housekeeping practices, storage of portable equipment, and temporary installations (e.g., scaffolding, lead shielding)? Yes
-

Status:  Y  N  U

**Area Walk-By Checklist (AWC)**

Location (Bldg, Elev, Room/Area): Area Walk-by 36

---

8. Have you looked for and found no other seismic conditions that could adversely affect the safety functions of the equipment in the area? Yes

*Seismic block walls with removable portions protected by anchored grating. Wall 3A-42A has a vertical crack at joint down from penetration at Column S-18. Wall spans vertically (approximately 56" tall) so wall is structurally acceptable. Not an issue.*

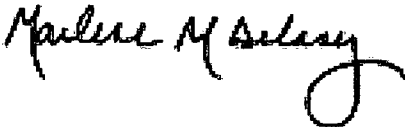
---

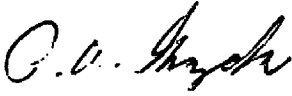
**Comments**

Seismic walkdown team M. Delaney & P. Gazda 8/2/12 pm

Aux EI 364, col Q-18 (2IY-0606, 2IY-0607, 2CC9412A)

---

Evaluated by:  Marlene Delaney Date: 10/1/2012

 Philip Gazda 10/1/2012

---

**Photos**

None.

---

Status:  Y  N  U

### Area Walk-By Checklist (AWC)

Location (Bldg, Elev, Room/Area): Area Walk-by 37

---

#### Instructions for Completing Checklist

This checklist may be used to document the results of the Area Walk-By near one or more SWEL items. The space below each of the following questions may be used to record the results of judgments and findings. Additional space is provided at the end of this checklist for documenting other comments.

---

1. Does anchorage of equipment in the area appear to be free of potentially adverse seismic conditions (if visible without necessarily opening cabinets)? Yes
  
  2. Does anchorage of equipment in the area appear to be free of significant degraded conditions? Yes
  
  3. Based on a visual inspection from the floor, do the cable/conduit raceways and HVAC ducting appear to be free of potentially adverse seismic conditions (e.g., condition of supports is adequate and fill conditions of cable trays appear to be inside acceptable limits)? Yes
  
  4. Does it appear that the area is free of potentially adverse seismic spatial interactions with other equipment in the area (e.g., ceiling tiles and lighting)?  
*Seismic block walls* Yes
  
  5. Does it appear that the area is free of potentially adverse seismic interactions that could cause flooding or spray in the area?  
*Fire protection piping is well-supported* Yes
  
  6. Does it appear that the area is free of potentially adverse seismic interactions that could cause a fire in the area?  
*Hydrochlorite piping is well-supported* Yes
  
  7. Does it appear that the area is free of potentially adverse seismic interactions associated with housekeeping practices, storage of portable equipment, and temporary installations (e.g., scaffolding, lead shielding)? Yes
-

Status:  Y  N  U

**Area Walk-By Checklist (AWC)**

Location (Bldg, Elev, Room/Area): Area Walk-by 37

---

8. Have you looked for and found no other seismic conditions that could adversely affect the safety functions of the equipment in the area? Yes  
*Wall at 1JB0004A is damaged and tagged as painting required (IR 184954, 170478)*
- 

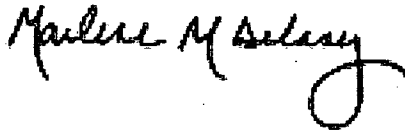
**Comments**

Seismic walkdown team M. Delaney & P. Gazda 8/2/12 pm

Aux EI 346 near Col M-16 (0SX007, 0SX146)

---

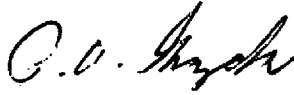
Evaluated by:



Marlene Delaney

Date: 10/1/2012

---



Philip Gazda

10/1/2012

---

**Photos**

None.

---



Status:  Y  N  U

### Area Walk-By Checklist (AWC)

Location (Bldg, Elev, Room/Area): Area Walk-by 38

---

#### Instructions for Completing Checklist

This checklist may be used to document the results of the Area Walk-By near one or more SWEL items. The space below each of the following questions may be used to record the results of judgments and findings. Additional space is provided at the end of this checklist for documenting other comments.

---

1. Does anchorage of equipment in the area appear to be free of potentially adverse seismic conditions (if visible without necessarily opening cabinets)? Yes
  
  2. Does anchorage of equipment in the area appear to be free of significant degraded conditions? Yes  
*Cosmetic corrosion at rack and walls*
  
  3. Based on a visual inspection from the floor, do the cable/conduit raceways and HVAC ducting appear to be free of potentially adverse seismic conditions (e.g., condition of supports is adequate and fill conditions of cable trays appear to be inside acceptable limits)? Yes  
*Well-supported components*
  
  4. Does it appear that the area is free of potentially adverse seismic spatial interactions with other equipment in the area (e.g., ceiling tiles and lighting)? Yes
  
  5. Does it appear that the area is free of potentially adverse seismic interactions that could cause flooding or spray in the area? Yes  
*Fire protection piping is well-supported*
  
  6. Does it appear that the area is free of potentially adverse seismic interactions that could cause a fire in the area? Yes
-

Status:  Y  N  U

**Area Walk-By Checklist (AWC)**

Location (Bldg, Elev, Room/Area): Area Walk-by 38

7. Does it appear that the area is free of potentially adverse seismic interactions associated with housekeeping practices, storage of portable equipment, and temporary installations (e.g., scaffolding, lead shielding)? Yes

*Numerous seismic housekeeping issues:  
See SWC for 2AP38E for SX drain down equipment cabinet  
Other issues: SX drain down equipment cabinet is 8" away from Rack 2PL92J,  
Vollo 20E lifting device is 11" from adjacent rack. IR 1396872 was generated.*

*Staged scaffolding is approximately 2" from seismic block wall (2A-14A).  
Scaffolding cart near (~6") from cable tray riser. IR 1396891 was generated.*

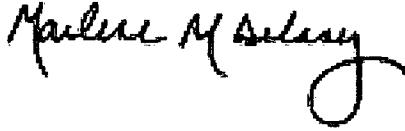
8. Have you looked for and found no other seismic conditions that could adversely affect the safety functions of the equipment in the area? Yes

**Comments**

Seismic walkdown team M. Delaney & P. Gazda 8/2/12 pm


Aux EI 346 Column M-23, P-24 (2AP38E)

Evaluated by:



Marlene Delaney

Date: 10/1/2012



Philip Gazda

10/1/2012

**Photos**

None.

Status:  Y  N  U

**Area Walk-By Checklist (AWC)**

Location (Bldg, Elev, Room/Area): Area Walk-by 39

---

**Instructions for Completing Checklist**

This checklist may be used to document the results of the Area Walk-By near one or more SWEL items. The space below each of the following questions may be used to record the results of judgments and findings. Additional space is provided at the end of this checklist for documenting other comments.

---

1. Does anchorage of equipment in the area appear to be free of potentially adverse seismic conditions (if visible without necessarily opening cabinets)? Yes
  
  2. Does anchorage of equipment in the area appear to be free of significant degraded conditions? Yes
  
  3. Based on a visual inspection from the floor, do the cable/conduit raceways and HVAC ducting appear to be free of potentially adverse seismic conditions (e.g., condition of supports is adequate and fill conditions of cable trays appear to be inside acceptable limits)? Yes
  
  4. Does it appear that the area is free of potentially adverse seismic spatial interactions with other equipment in the area (e.g., ceiling tiles and lighting)? Yes
  
  5. Does it appear that the area is free of potentially adverse seismic interactions that could cause flooding or spray in the area? Yes
  
  6. Does it appear that the area is free of potentially adverse seismic interactions that could cause a fire in the area? Yes
-

Status:  Y  N  U

**Area Walk-By Checklist (AWC)**

Location (Bldg, Elev, Room/Area): Area Walk-by 39

- 
7. Does it appear that the area is free of potentially adverse seismic interactions associated with housekeeping practices, storage of portable equipment, and temporary installations (e.g., scaffolding, lead shielding)? Yes  
*Two permanent scaffolds in room. North side of room scaffold is near 2FS-D0001 but wouldn't slide into glass plate since scaffold is well-braced and tied off. Soft target is protected. Other permanent scaffold on south side is also well tied off and braced.*
8. Have you looked for and found no other seismic conditions that could adversely affect the safety functions of the equipment in the area? Yes

---

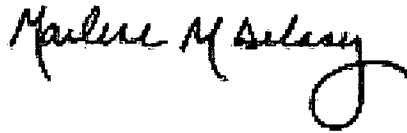
**Comments**

Seismic walkdown team M. Delaney & P. Gazda 8/2/12 pm

Aux EI 373, 2A Diesel Oil Storage Tank Room (2DO01TA)

---

Evaluated by:



Marlene Delaney

Date: 10/1/2012



Philip Gazda

10/1/2012

---

**Photos**

None.

Status:  Y  N  U

### Area Walk-By Checklist (AWC)

Location (Bldg, Elev, Room/Area): Area Walk-by 40

---

#### Instructions for Completing Checklist

This checklist may be used to document the results of the Area Walk-By near one or more SWEL items. The space below each of the following questions may be used to record the results of judgments and findings. Additional space is provided at the end of this checklist for documenting other comments.

---

1. Does anchorage of equipment in the area appear to be free of potentially adverse seismic conditions (if visible without necessarily opening cabinets)? Yes
  
  2. Does anchorage of equipment in the area appear to be free of significant degraded conditions? Yes
  
  3. Based on a visual inspection from the floor, do the cable/conduit raceways and HVAC ducting appear to be free of potentially adverse seismic conditions (e.g., condition of supports is adequate and fill conditions of cable trays appear to be inside acceptable limits)? Yes
  
  4. Does it appear that the area is free of potentially adverse seismic spatial interactions with other equipment in the area (e.g., ceiling tiles and lighting)? Yes
  
  5. Does it appear that the area is free of potentially adverse seismic interactions that could cause flooding or spray in the area?  
*Sprinkler piping is well-supported* Yes
  
  6. Does it appear that the area is free of potentially adverse seismic interactions that could cause a fire in the area? Yes
  
  7. Does it appear that the area is free of potentially adverse seismic interactions associated with housekeeping practices, storage of portable equipment, and temporary installations (e.g., scaffolding, lead shielding)? Yes
-

Status:  Y  N  U

**Area Walk-By Checklist (AWC)**

Location (Bldg, Elev, Room/Area): Area Walk-by 40

---

8. Have you looked for and found no other seismic conditions that could adversely affect the safety functions of the equipment in the area? Yes

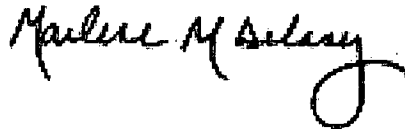
---

**Comments**

Aux, El. 364, Unit 1 curved wall near 1AP21E (OFC006A)

---

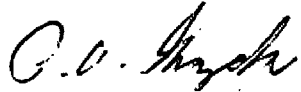
Evaluated by:



Marlene Delaney

Date: 10/1/2012

---



Philip Gazda

10/1/2012

---

---

**Photos**

None.

---

Status:  Y  N  U

**Area Walk-By Checklist (AWC)**

Location (Bldg, Elev, Room/Area): Area Walk-by 41

---

**Instructions for Completing Checklist**

This checklist may be used to document the results of the Area Walk-By near one or more SWEL items. The space below each of the following questions may be used to record the results of judgments and findings. Additional space is provided at the end of this checklist for documenting other comments.

---

1. Does anchorage of equipment in the area appear to be free of potentially adverse seismic conditions (if visible without necessarily opening cabinets)? Yes
  
  2. Does anchorage of equipment in the area appear to be free of significant degraded conditions? Yes
  
  3. Based on a visual inspection from the floor, do the cable/conduit raceways and HVAC ducting appear to be free of potentially adverse seismic conditions (e.g., condition of supports is adequate and fill conditions of cable trays appear to be inside acceptable limits)? Yes
  
  4. Does it appear that the area is free of potentially adverse seismic spatial interactions with other equipment in the area (e.g., ceiling tiles and lighting)? Yes
  
  5. Does it appear that the area is free of potentially adverse seismic interactions that could cause flooding or spray in the area? Yes
  
  6. Does it appear that the area is free of potentially adverse seismic interactions that could cause a fire in the area? Yes
  
  7. Does it appear that the area is free of potentially adverse seismic interactions associated with housekeeping practices, storage of portable equipment, and temporary installations (e.g., scaffolding, lead shielding)? Yes
-



Status:  Y  N  U

**Area Walk-By Checklist (AWC)**

Location (Bldg, Elev, Room/Area): Area Walk-by 41

---

8. Have you looked for and found no other seismic conditions that could adversely affect the safety functions of the equipment in the area? Yes  
*Seismic block walls in area. Removable portions protected by grating.*

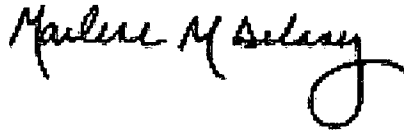
---

**Comments**

Fuel Handling Bldg. El 401 Unit 1 Spent Fuel HX and Pump Room (Area Walk-by 33 and 34 from Unit 1)

---

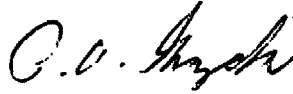
Evaluated by:



Marlene Delaney

Date: 10/1/2012

---



Philip Gazda

10/1/2012

---

---

**Photos**

None.

---

# E

## Plan for Future Seismic Walkdown of Inaccessible Equipment

---

Eighteen (18) items could not be walked down during the 180-day period following the issuance of the 10CFR50.54(f) letter due to their being inaccessible. The items will be walked down during a unit outage or time when the equipment is accessible, as appropriate. Table E-1 summarizes the reasons each item is inaccessible during normal plant operation and notes the Braidwood Station Issue Report (IR) that has been written to track completion of the Seismic Walkdowns (and Area Walk-bys) for these items. It is noted that SSCs identified on Table E-1 require a complete inspection including, as applicable, internal inspections of electrical cabinets for other adverse seismic conditions, as required.

Certain cabinets require supplemental internal inspection for other adverse seismic conditions as summarized in Table E-2. Supplemental internal inspections of these cabinets are required due to clarifications provided by the NRC after the online seismic walkdowns were completed. These Supplemental inspections will be completed during a unit outage or another time when the equipment is accessible, as appropriate. It is noted, that SSCs identified on Table E-1 do not appear on Table E-2.

**Table E-1. Inaccessible and Deferred Equipment List**

Component ID	Description	Reason for Inaccessibility	Action Request ID (IR)	Resolution /Status	Milestone Completion
2RD05E	RX TRIP BREAKERS	Equipment energized – equipment outage required	1406296	Open	A2R16
2AP05E	EQ 4160 VOLT ESF SWITCH GEAR 241	Equipment energized – equipment outage required	1440020	Open	A2R16
2AP10E	EQ 480V ESF SUBSTATION BUS 231X ASMBLY	Equipment energized – equipment outage required	1440020	Open	A2R16
2LT-0517	S/G LOOP 2A LEVEL D/P XMTTR W/FILLED LEG	Located in containment	1406296	Open	A2R16
2CC9438	CC FROM RC PMPs THERMAL BARRIER ISOL VLV ASMBLY	Located in containment	1406296	Open	A2R16
2LT-0459	PRZR LEVEL D/P TRANSMITTER	Located in containment	1406296	Open	A2R16
2PT-0455	U2 PRESSURIZER PRESS CHANNEL 455	Located in containment	1406296	Open	A2R16
2LT-0527	S/G LOOP 2B LEVEL D/P TRANSMITTER W/FILLED LEG	Located in containment	1406296	Open	A2R16
2PT-0457	PRZR PRESSURE TRANSMITTER	Located in containment	1406296	Open	A2R16
2RH8702A	RC LOOP 2C TO RH PMP 2B SUCT ISOL VLV ASMBLY	Located in containment	1406296	Open	A2R16
2VP01AA	CNMT ESS'L SERVICE WATER COIL 2A (RCFC)	Located in containment	1440020	Open	A2R16

Component ID	Description	Reason for Inaccessibility	Action Request ID (IR)	Resolution /Status	Milestone Completion
2RY32MA	PRESSURIZER PORV ACCUM 2A	Located in containment	1406296	Open	A2R16
2RY32MB	PRESSURIZER PORV ACCUM 2B	Located in containment	1406296	Open	A2R16
2RY455A	PZR PORV (C/S AT 2PM05J) ASMBLY	Located in containment	1406296	Open	A2R16
2TE-RC022A	RC WIDE RANGE LP 2A TEMP	Located in containment	1406296	Open	A2R16
0W001CA	CHILLED WATER SYS CONTROL ROOM REFRIGERATION UNIT 0A	Added to SWEL 1	1406296	Open	A2R16
2FC012	SPENT FUEL PIT FLT DEMIN LOOP RTRN TO U-2 REFUEL CAV CNMT ISOL	Located in containment	1440020	Open	A2R16
2FC009	REFUELING WTR PURIF PMP SUCT FROM U-2 REFUEL CV CNMT ISOL	Located in containment	1440020	Open	A2R16

**Table E-2. Supplemental Cabinet Internal Inspection List**

COMPONENT ID	DESCRIPTION	EQUIPMENT CLASS	ACCESSIBLE (Y/N)	IF NOT ACCESSIBLE, WHY?	MILESTONE COMPLETION	TRACKING NUMBER (IR No.)	STATUS / INSPECTION RESULTS
2AP22E	480V AUX BLDG ESF MCC 231X3 ASMBLY	(01) Motor Control Centers	N - Front Y - Back	Front panels require extensive disassembly	A2R16	IR 1428422	Inspection complete, results to be included in a future transmittal
2AP27E	EQ 480V AUX BLDG MCC 232X2 ASMBLY	(01) Motor Control Centers	N - Front Y - Back	Front panels require extensive disassembly	A2R16	IR 1428422	Inspection complete, results to be included in a future transmittal
2AP30E	EQ 480V AUX BLDG ESF MCC 231X5 ASMBLY	(01) Motor Control Centers	N - Front Y - Back	Front panels require extensive disassembly	A2R16	IR 1428422	Inspection complete, results to be included in a future transmittal
2AP32E	EQ 480V AUX BLDG MCC 232X5 ASMBLY	(01) Motor Control Centers	N - Front Y - Back	Front panels require extensive disassembly	A2R16	IR 1428422	Inspection complete, results to be included in a future transmittal
2AP38E	ASSY - 480V AUX BLDG MCC 233X1	(01) Motor Control Centers	N - Front Y - Back	Front panels require extensive disassembly	A2R16	IR 1428422	Inspection complete, results to be included in a future transmittal

COMPONENT ID	DESCRIPTION	EQUIPMENT CLASS	ACCESSIBLE (Y/N)	IF NOT ACCESSIBLE, WHY?	MILESTONE COMPLETION	TRACKING NUMBER (IR No.)	STATUS / INSPECTION RESULTS
2AP13E	EQ UNIT SUBSTATION 232X TRAN 480V ESF	(04) Transformers	N	Extensive disassembly required		IR 1428422	Closed
2IP01E	INSTRUMENT BUS 211 TRANSFORMER - DIV. 21	(04) Transformers	N - Back Y - Front	Back panels require extensive disassembly	A2R16	IR 1428422	Inspection complete, results to be included in a future transmittal
2IP02E	INSTRUMENT BUS 212 TRANSFORMER - DIV. 22	(04) Transformers	N - Back Y - Front	Back panels require extensive disassembly	A2R17	IR 1428422	Open
2IP03E	INSTRUMENT BUS 213 TRANSFORMER - DIV. 21	(04) Transformers	N - Back Y - Front	Back panels require extensive disassembly	A2R16	IR 1428422	Inspection complete, results to be included in a future transmittal
2IP04E	INSTRUMENT BUS 214 TRANSFORMER - DIV. 22	(04) Transformers	N - Back Y - Front	Back panels require extensive disassembly	A2R17	IR 1428422	Open
2DC05E	125V DC ESF DIST CENTER 211	(14) Distribution Panels	N	ESF distribution sub panels 2DC05EA and 2DC05EB only Panel requires excessive disassembly		IR 1428422	Closed

Table E-2 Page 2 of 7

COMPONENT ID	DESCRIPTION	EQUIPMENT CLASS	ACCESSIBLE (Y/N)	IF NOT ACCESSIBLE, WHY?	MILESTONE COMPLETION	TRACKING NUMBER (IR No.)	STATUS / INSPECTION RESULTS
2DC06E	125V DC ESF DIST CENTER 212	(14) Distribution Panels	N	ESF distribution sub panels 2DC06EA and 2DC06EB only Panel requires excessive disassembly		IR 1428422	Closed
2DC06EA	125V DC ESF DIST PNL 212	(14) Distribution Panels	Y		A2R17	IR 1428422	Open
2DC10J	125V DC FUSE PANEL - DIV. 21	(14) Distribution Panels	Y		A2R16	IR 1428422	Inspection complete, results to be included in a future transmittal
2IP01J	120VAC INSTRUMENT BUS DISTRIBUTION PANEL 211 - DIV. 21	(14) Distribution Panels	Y		A2R16	IR 1428422	Inspection complete, results to be included in a future transmittal
2DC03E	BATTERY CHARGER 211 DIV. 21	(16) Battery Chargers and Inverters	N - Back Y - Front	Back panels require extensive disassembly	A2R16	IR 1428422	Inspection complete, results to be included in a future transmittal
2DC04E	BATTERY CHARGER 212 DIV. 22	(16) Battery Chargers and Inverters	N - Back Y - Front	Back panels require extensive disassembly	A2R17	IR 1428422	Open

Table E-2 Page 3 of 7



COMPONENT ID	DESCRIPTION	EQUIPMENT CLASS	ACCESSIBLE (Y/N)	IF NOT ACCESSIBLE, WHY?	MILESTONE COMPLETION	TRACKING NUMBER (IR No.)	STATUS / INSPECTION RESULTS
2IP05E	INSTRUMENT BUS 211 INVERTER - DIV. 21	(16) Battery Chargers and Inverters	N - Back Y - Front	Back panels require extensive disassembly Outage Required	A2R17	IR 1428422	Open
2IP06E	INSTRUMENT BUS 212 INVERTER - DIV. 22	(16) Battery Chargers and Inverters	N - Back Y - Front	Back panels require extensive disassembly Outage Required	A2R17	IR 1428422	Open
2IP07E	INSTRUMENT BUS 213 INVERTER - DIV. 21	(16) Battery Chargers and Inverters	N - Back Y - Front	Back panels require extensive disassembly Outage Required	A2R17	IR 1428422	Open
2IP08E	INSTRUMENT BUS 214 INVERTER - DIV. 22	(16) Battery Chargers and Inverters	N - Back Y - Front	Back panels require extensive disassembly Outage Required	A2R17	IR 1428422	Open
0VC01JB	CONTROL ROOM HVAC SYST LOCAL CONT PANEL ASMBLY	(20) Instrumentation and Control Panels and Cabinets	Y		A2R16	IR 1428422	Inspection complete, results to be included in a future transmittal
0VC16J	MCR U-2 HVAC START PNL	(20) Instrumentation and Control Panels and Cabinets	Y		A2R16	IR 1428422	Inspection complete, results to be included in a future transmittal

COMPONENT ID	DESCRIPTION	EQUIPMENT CLASS	ACCESSIBLE (Y/N)	IF NOT ACCESSIBLE, WHY?	MILESTONE COMPLETION	TRACKING NUMBER (IR No.)	STATUS / INSPECTION RESULTS
2AF01J	AUX FEEDWATER PUMP 2B STARTUP PANEL ASMBLY	(20) Instrumentation and Control Panels and Cabinets	Y		A2R16	IR 1428422	Inspection complete, results to be included in a future transmittal
2DG04EA	DIESEL GENERATOR 2A SYNCHRO-CHECK RELAY BOX	(20) Instrumentation and Control Panels and Cabinets	Y		A2R16	IR 1428422	Inspection complete, results to be included in a future transmittal
2PA03J	PROTECTION SYSTEM CABINET (I&E Prot. Cab. CH 3)	(20) Instrumentation and Control Panels and Cabinets	Y		A2R16	IR 1428422	Inspection complete, results to be included in a future transmittal
2PA09J	PROTECTION SYSTEM CABINET (SSPS Cab. Train A)	(20) Instrumentation and Control Panels and Cabinets	Y		A2R16	IR 1428422	Inspection complete, results to be included in a future transmittal
2PA27J	AUX SAFEGUARD RELAY CABINET (A)	(20) Instrumentation and Control Panels and Cabinets	Y		A2R16	IR 1428422	Inspection complete, results to be included in a future transmittal

Table E-2 Page 5 of 7

COMPONENT ID	DESCRIPTION	EQUIPMENT CLASS	ACCESSIBLE (Y/N)	IF NOT ACCESSIBLE, WHY?	MILESTONE COMPLETION	TRACKING NUMBER (IR No.)	STATUS / INSPECTION RESULTS
2PL07J	2A DG 2DG01KA CONTROL PANEL	(20) Instrumentation and Control Panels and Cabinets	Y		A2R16	IR 1428422	Inspection complete, results to be included in a future transmittal
2PL08J	2B DG 2DG01KB	(20) Instrumentation and Control Panels and Cabinets	Y		A2R17	IR 1428422	Open
2PM05J	MAIN CONTROL BOARD	(20) Instrumentation and Control Panels and Cabinets	Y		A2R16	IR 1428422	Inspection complete, results to be included in a future transmittal
2PM06J	MAIN CONTROL BOARD	(20) Instrumentation and Control Panels and Cabinets	Y		A2R16	IR 1428422	Inspection complete, results to be included in a future transmittal
2PM07J	MAIN CONTROL BOARD	(20) Instrumentation and Control Panels and Cabinets	Y		A2R16	IR 1428422	Inspection complete, results to be included in a future transmittal

COMPONENT ID	DESCRIPTION	EQUIPMENT CLASS	ACCESSIBLE (Y/N)	IF NOT ACCESSIBLE, WHY?	MILESTONE COMPLETION	TRACKING NUMBER (IR No.)	STATUS / INSPECTION RESULTS
2PM11J	MAIN CONTROL BOARD	(20) Instrumentation and Control Panels and Cabinets	Y		A2R16	IR 1428422	Inspection complete, results to be included in a future transmittal
2VA01J	ESS SERV WATER PMP 1A CUB COOLER LOCAL PNL	(20) Instrumentation and Control Panels and Cabinets	Y		A2R16	IR 1428422	Inspection complete, results to be included in a future transmittal
2VA10J	CENT CHARGING PUMP CUBICLE COOLER LOCAL PANEL	(20) Instrumentation and Control Panels and Cabinets	N	Extensive disassembly required		IR 1428422	Closed
2VD04J	2A DG RM HVAC DMPR START PNL	(20) Instrumentation and Control Panels and Cabinets	Y		A2R16	IR 1428422	Inspection complete, results to be included in a future transmittal
2VX07J	ESF SWGR RM DIV 22 HVADAMPER STARTER PANEL	(20) Instrumentation and Control Panels and Cabinets	Y		A2R16	IR 1428422	Inspection complete, results to be included in a future transmittal

# **F**

## **Peer Review Report**

---

This appendix includes the Peer Review Team's report, including the signed Peer Review Checklist for SWEL from Appendix F of the EPRI guidance document. (Ref. 1)

**Peer Review Report**  
**For**  
**Near Term Task Force (NTTF) Recommendation 2.3**  
**Seismic Walkdown Inspection**  
**of**  
**Braidwood Nuclear Station Unit 2**

**September 29, 2012**

**Prepared by Peer Reviewers**

**Bruce M. Lory (Team Leader)**

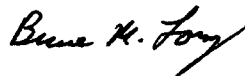
**Walter Djordjevic**

**Todd A. Bacon**

**Tribhawan K. Ram**

Bruce M. Lory

Peer Review Team Leader Certification Signature



Date 09/29/12

# 1 Introduction

---

## 1.1 OVERVIEW

This report documents the independent peer review for the Near Term Task Force (NTTF) Recommendation 2.3 Seismic Walkdowns performed by Stevenson & Associates (S&A) for Unit 2 of Braidwood Nuclear Station (BNS). The peer review addresses the following activities:

- Review of the selection of the structures, systems, and components, (SSCs) that are included in the Seismic Walkdown Equipment List (SWEL)
- Review of a sample of the checklists prepared for the Seismic Walkdowns & Walk-Bys
- Review of any licensing basis evaluations
- Review of the decisions for entering the potentially adverse conditions in to the plant's Corrective Action Plan (CAP)
- Review of the final submittal report

## 1.2 PEER REVIEWERS

The peer reviewers for BNS, Unit 2 are Messrs. Walter Djordjevic, Bruce M. Lory, and Tribhawan K. Ram, all of S&A. Mr. Lory is designated the Peer Review Team Leader and has participated in all aspects of the peer review. None of the aforementioned engineers is involved in the seismic walkdown inspection process so that they can maintain their independence from the project. Mr. Djordjevic is an advanced degree structural engineer and has over thirty years of nuclear seismic experience and has been trained as a Seismic Capability Engineer (EPRI SQUG training), EPRI IPEEE Add-on, Seismic Fragility and Seismic Walkdown Engineer (SWE) training. Mr. Lory is a mechanical engineer with 33 years of experience, has been trained as a Seismic Capability Engineer (EPRI SQUG training), is instructor of the Fundamentals of Equipment Seismic Qualification training course for EPRI, and is the co-instructor of the Fukushima Seismic Walkdown training course in response to NTTF 2.3. Mr. Ram is an advanced degree nuclear engineer with over 25 years of nuclear power plant experience.

## 1.3 SWEL DEVELOPMENT

The SWEL development was performed by Mr. Kim L. Hull of S&A. The peer review of the SWEL development was concurrent with the SWEL development. The completed SWEL Peer Review Checklist is found in Attachment 2. The discussion for the SWEL development peer review is found in Section 2.



## **1.4 SEISMIC WALKDOWN INSPECTION**

The peer review of the seismic walkdown inspection started on August 30, 2012 with a peer check of the actual walkdowns for Unit 2. Mr. Bacon joined the walkdown team for a portion of the day's planned walkdowns to observe the conduct of walkdowns and adherence to the Seismic Walkdown Guidance (SWG)<sup>1</sup>. No additional peer review site visits were made for the Unit 2 walkdown as the same procedures were implemented and nearly the same SWEL equipment was inspected. However, an interview was conducted by Messrs. Djordjevic and Lory with the SWE inspection team on September 29, 2012 after review of a sample of the Unit 2 Seismic Walkdown Checklists (SWC) and Area Walk-By Checklists (AWC) to ascertain the quality and procedural compliance with the SWG. The discussion of the sample SWC and AWC is provided in Section 3.

## **1.5 Conclusion of Peer Review – Selection of SSCs**

This peer review concludes that the process for selecting SSCs to be included on the seismic walkdown equipment list appropriately followed the process outlined in reference 1, Section 3: Selection of SSCs. It is further concluded that the SWEL sufficiently represents a broad population of plant Seismic Category 1 equipment and systems to meet the objectives of the NRC 50.54(f) Letter.

---

<sup>1</sup> Seismic Walkdown Guidance For Resolution of Fukushima Near-Term Task Force Recommendation 2.3: Seismic, EPRI Report 1025286, June 2012.

## 2 Peer Review - Selection of SSCs

---

### 2.1 PURPOSE

The purpose of this section is to describe the process that was used to perform the peer review of the selected structures, systems, and components, (SSCs) that were included in the Seismic Walkdown Equipment List (SWEL).

This section documents the Peer Review – Selection of SSCs performed for Braidwood Unit 2

### 2.2 PEER REVIEW ACTIVITY – SELECTION OF SSCs

#### 2.2.1 Peer Review Activity – Selection of SSCs

The guidance in EPRI Technical Report 1025286, *Seismic Walkdown Guidance for Resolution of Fukushima Near-Term Task Force Recommendation 2.3: Seismic*, dated June 2012 {Reference 1}, Section 3: Selection of SSCs was used as the basis for this review.

This peer review was based on reviews of the following documents:

- 1) UFSAR chapters 3, 6, 7, 8 and 9
- 2) SWEL 1 & SWEL 2
- 3) P&ID M-63: Fuel Pool Cooling and Clean-Up

This peer review was based on interviews with the following individual(s) who was (were) directly responsible for development of the SWEL:

Kim Hull

This peer review utilized the checklist shown in Reference 1 Appendix F: Checklist for Peer Review of SSC Selection.

For SWEL 1 development, the following actions were completed in the peer review process:

- Verification that the SSCs selected represented a diverse sample of the equipment required to perform the following five safety functions:
  - Reactor Reactivity Control (RRC)
  - Reactor Coolant Pressure Control (RCPC)
  - Reactor Coolant Inventory Control (RCIC)
  - Decay Heat Removal (DHR)

- Containment Function (CF)

This peer review determined that the SSCs selected for the seismic walkdowns represent a diverse sample of equipment required to perform the five safety functions. This conclusion was based on a review of UFSAR chapters 3, 6, 7, 8 and 9 and SWEL 1 which determined that all five safety functions (RRC, RCPC, RCIC, DHR, and CF) are adequately represented.

- Verification that the SSCs selected include an appropriate representation of items having the following sample selection attributes:
  - Various types of systems
  - Major new and replacement equipment
  - Various types of equipment
  - Various environments
  - Equipment enhanced based on the findings of the IPEEE
  - Risk insight consideration

This peer review determined that the SSCs selected for the seismic walkdowns include a sample of items that represent each attribute/consideration identified above. The justification for this conclusion is: a) Based on a review of UFSAR chapters referenced above and SWEL 1 list, it was determined that appropriate variety of equipment and systems are represented (e.g., EDG, Component Cooling, Aux Feed, Charging, Essential Service WTR, RHR, Batteries, Battery Chargers, Low and Med Vol Switchgear and MCCs); b) The "New or Replace" equipment are indicated as such; c) A variety of location environments are included: e.g., MCCs (Auxiliary @ EL: 346, 383, and 426), Pumps (Auxiliary @ EL: 330, 364, and 383), Tanks and Heat Exchangers (Auxiliary and Containment), and Valves (Auxiliary and Containment); d) The IPEEE Enhancement related equipment is indicated as such; and e) The risk quantification has been included in the "Comments" column.

Note: Because of accessibility reasons, some equipment has appropriately been deferred to Outage.

For SWEL 2 development, the following actions were completed in the peer review process:

- Verification that SFP related items were considered and appropriately added to SWEL 2.

This peer review determined that spent fuel pool cooling system Seismic CAT 1 items were given appropriate consideration and included on the list. This determination is based on a review SWEL 2 list, FSAR chapters 3 and 9, and FP Cooling and Clean-Up System P&ID M-63.

- Verification that appropriate justification was documented for spent fuel pool related items that were not added to the SWEL 2.

This peer review determined that an appropriate level of justification was documented for those items related to the spent fuel pool that were not added to SWEL 2. The justification for not including any Seismic Category I Structure has appropriately been documented in the interim report. There are no rapid drain down related components in SWEL2. Appropriate justification for this item is included in the interim report as well.

### **2.2.2 Peer Review Findings – Selection of SSCs**

This peer review found that the process for selecting SSCs that were added to the SWEL was consistent with the process outlined in Reference 1 Section 3: Selection of SSCs.

The peer review checklist is attached to this document.

This peer review resulted in no additional findings.

### **2.2.3 Resolution of Peer Review Comments – Selection of SSCs**

All comments requiring resolution were incorporated prior to completion of this peer review.

### **2.2.4 Conclusion of Peer Review – Selection of SSCs**

This peer review concludes that the process for selecting SSCs to be included on the seismic walkdown equipment list appropriately followed the process outlined in Reference 1, Section 3: Selection of SSCs. It is further concluded that the SWEL sufficiently represents a broad population of plant Seismic Category 1 equipment and systems to meet the objectives of the NRC 50.54(f) Letter.

# 3 Review of Sample Seismic Walkdown & Area Walk-Bys Checklists

## 3.1 OVERVIEW

A peer review of the SWCs and AWCs was performed on September 29, 2012, after which an interview was conducted by Messrs. Djordjevic and Lory with the SWE inspection team in accordance with the SWG requirements. The SWE trained walkdown engineers were Messrs. Marlene Delaney and Phil Gazda.

## 3.2 SAMPLE CHECKLISTS

Table 3-1 lists the SWC and AWC samples which represent 11.7% of the SWC and 19% of the AWC. The sample includes the equipment inspected during the peer review and other equipment items from other classes to introduce diversity to the sampling procedure.

*Table 3-1: Table of SWC and AWC Samples from Seismic Walkdown Inspection for Unit 2*

Equipment Identification	Equip Class	Walkdown Item	Observations
0WO01CA	11	Chilled Water Sys Control Room Refrigeration Unit 0A	Equipment is status U. Remove from submittal report or obtain information to get SWC to Y or N status.
2AF006A	8	Auxiliary Feedwater Pump 2A SX Suction Valve Assembly	No concerns
2AF01EA-A	15	Battery 1 Auxiliary Feedwater Pump	No concerns
2AF01J	20	Aux Feedwater Pump 2B Startup Panel Assembly	No concerns
2AF01PA	5	Aux Feedwater Motor Driven Pump	No concerns. Typo on question 5 – "Not" should be "Note"
2AP05E	3	4160 VOLT ESF 241 Switchgear	Equipment is status U. Remove from submittal report or obtain information to get SWC to Y or N status.
2AP13E	4	Unit Substation 232X Transformer 480V ESF	No concerns
2AP38E	1	480V Aux Blcg MCC 233X1	No concerns
2DC03E	16	Battery Charger 211 DIV. 21	No concerns
2DC05E	14	125VDC ESF DIST CENTER 211	No concerns

Equipment Identification	Equip (GIP) Class	Walkdown Item	Observations
2IP03E	4	Instrument Bus 213 Transformer - DIV. 21	No concerns
2IP05E	16	Instrument Bus 211 Inverter - DIV. 21	No concerns
2IP06E	16	Instrument Bus 212 Inverter - DIV. 22	No concerns

Area Walkdown Description	Observations
Area Walk-by 05, Aux, Area 7, El. 364 ft, curved wall	No concerns
Area Walk-by 06, Fuel Handling Building adjacent to truck bay, El. 401'	No concerns
Area Walk-by 09, Aux El. 451 (Division 21) Meer Rooms	No concerns
Area Walk-by 10, Aux Bldg, El.451, Division 211 Room	No concerns
Area Walk-by 10a, Aux, El 451 Division 22 MEER Room	No concerns
Area Walk-by 11, Aux, El 451 and 463, OB VC Room	No concerns
Area Walk-by 12, Aux, El. 451, Aux Electric Equipment Room	No concerns
Area Walk-by 14, Aux El 451, OA VC Room	No concerns

### 3.3 EVALUATION OF FINDINGS

There were no findings of seismic significance. The scaffolding and seismic housekeeping procedures was reviewed by the SWEs in order to gain a full understanding of the plant practices in regard to those procedures. There were concerns noted in Unit 2 with regard to scaffold erection.

With regard to seismic housekeeping, there were numerous instances cabinets being placed in unapproved locations. Braidwood procedure BwAP 1100-23 – "Seismic Housekeeping Requirements for the Temporary Storage of Materials in Category 1 Areas" was reviewed and IRs created to provide the appropriate disposition.

Generally, if they were found to not to contribute to a credible seismic interaction they were adjudged acceptable and not dispositioned to an IR. Similarly, if an item posed a potential proximity hazard to a vital component and it was removed "on the spot" in accordance with the housekeeping procedure then it was also not dispositioned to an IR. However, in all instances the Seismic Walkdown Checklist (SWC) document the details of the occurrence, the action taken (if any) and the conclusion rendered by the SWE inspectors. Importantly, if the situation warranted a correction then an IR was specifically generated for that component or area in the case of area walk-bys.

It is recommended that when maintenance activities are undertaken that attention be given with regard to storage of temporary equipment/cabinets.



# **4** Review of Licensing Basis Assessments

---

## **4.1 OVERVIEW**

Because none of the issues identified during the Seismic Walkdowns or Area Walk-Bys were determined to be "Potentially Adverse Seismic Conditions, no Licensing Basis Evaluations were required.

## **4.2 CONCLUSIONS**

Because none of the issues identified during the Seismic Walkdowns or Area Walk-Bys were determined to be "Potentially Adverse Seismic Conditions, no Licensing Basis Evaluations were required.

## **5** Review Final Submittal Report & Sign-off

---

The entire final submittal report has been reviewed by Messrs. W. Djordjevic and B. Lory and found to meet the requirements of the EPRI 1025286 – Seismic Walkdown Guidance (Ref. 1)

## 6 References

---

- 1) EPRI Technical Report 1025286, *Seismic Walkdown Guidance for Resolution of Fukushima Near-Term Task Force Recommendation 2.3: Seismic*, dated June 2012

**Peer Review Checklist for SWEL**

---

**Instructions for Completing Checklist**

This peer review checklist may be used to document the review of the Seismic Walkdown Equipment List (SWEL) in accordance with Section 6. The space below each question in this checklist should be used to describe any findings identified during the peer review process and how the SWEL may have changed to address those findings. Additional space is provided at the end of this checklist for documenting other comments.

1. Were the five safety functions adequately represented in the SWEL 1 selection? Y  N   
*Appropriate equipment has been included to maintain the five safety functions: RPC, DHR, RCIC, RCPC, and CF*

---

2. Does SWEL 1 include an appropriate representation of items having the following sample selection attributes:

a. Various types of systems? Y  N   
*Various system types have been included (e.g., RX Trip Breakers, Charging Pump, PORVs, Aux Feed Pump, RHR Pump, Chiller, CCW Pump, Essential SW Pump, and support systems such as DC, MCCs, Batteries, and HVAC).*

b. Major new and replacement equipment? Y  N   
*"New or Replace" equipment are included in the list.*

c. Various types of equipment? Y  N   
*The equipment represents all required 21 types except 12 and 13. The screenings #1, #2, and #3 resulted in no equipment in the latter two categories.*

d. Various environments? Y  N   
*Appropriate environments have been included (e. g., Containment and Auxiliary buildings)*

e. Equipment enhanced based on the findings of the IPEEE (or equivalent) program? Y  N   
*Included as indicated in the column, "IPEEE Enhancement."*

**Peer Review Checklist for SWEL**

---

f. Were risk insights considered in the development of SWEL 1? Y  N   
*Risk quantifications provided in the "Comments" column*

---

3. For SWEL 2:

a. Were spent fuel pool related items considered, and if applicable included in SWEL 2? Y  N   
*Seismic CAT 1 items have been included; none are associated with SFP rapid draindown.*

b. Was an appropriate justification documented for spent fuel pool related items not included in SWEL 2? Y  N   
*Provided in the Submittal Report*


---


4. Provide any other comments related to the peer review of the SWELs.

---

5. Have all peer review comments been adequately addressed in the final SWEL? Y  N

---

Peer Reviewer #1: TK Ram  Date: 7/23/12

Peer Reviewer #2: Walter Djordjevic  Date: 8/18/12

# **G** IPEEE Vulnerability Status

---

Table G-1 lists the plant improvements, the IPEEE/SQUG proposed resolution, the actual resolution and resolution date.

**Table G-1. IPEEE Improvements Status**

Equipment ID	Description of Condition / Vulnerability*	IPEEE Report Proposed Resolution of Condition**	Actual Resolution of Condition	Resolution Date
2FT-AF011 2FT-AF012 2FT-AF013 2FT-AF014 2FT-AF015 2FT-AF016 2FT-AF017 2FT-AF018 Flow Transmitters	Flow transmitters adjacent to Recycle Monitor tanks (1&2AB02T) which are unanchored; thus they pose a potential flooding hazard to the transmitters on the adjacent nearby instrument rack.	Tank has been shown to maintain its integrity well beyond RLE demand level by CDFM capacity analysis.	Tank has been shown to maintain its integrity well beyond RLE demand level by CDFM capacity.	11/12/2012
2AP22E	Potential Seismic interaction concern with adjacent EMT equipment locker.	EMT equipment locker has been relocated to eliminate the interaction risk.	EMT equipment locker has been relocated to eliminate the interaction risk.	6/27/1997
1CV112E 2CV112E Valves	Operator is in contact with adjacent pipe/grating which poses an impact hazard.	Evaluate clearance requirements and effect on valve and pipe system	Evaluations have determined that the affected piping systems and valve are adequate with the reduced clearance. 2CV112E tracked by IR 1429477	3/17/1999 11/02/2012



Equipment ID	Description of Condition / Vulnerability*	IPEEE Report Proposed Resolution of Condition**	Actual Resolution of Condition	Resolution Date
2AP38E	1) Interaction hazard due to MCC not bolted to adjacent cubicle in line-up. 2) A radioactive material storage box and dollies are also stored nearby and pose a potential interaction hazard.	1) Interaction will be evaluated on a case-by-case basis. Bolt adjacent MCCs together as required. 2) Items have been relocated so as not to pose an interaction risk.	1) Cabinet is bolted to adjacent cabinet. 2) Items have been relocated so as not to pose an interaction risk.	11/15/2003  11/27/1997
1AP22E	Gas cylinder adjacent to MCC had both restraint chains missing – an example of poor seismic housekeeping. Also, an adjacent copper line behind the MCC is corroded; however, it was adjudged not to have the potential to collapse onto the MCC.	Restraint chains have been replaced eliminating the potential interaction risk.	Restraint chains have been replaced eliminating the potential interaction risk.	6/27/1997
11Y0606	Argon gas cylinder adjacent to MCC had one restraint chain missing.	The missing restraint chain has been replaced eliminating the potential interaction risk	The missing restraint chain has been replaced eliminating the potential interaction risk	6/27/1997
1AP27E 2AP27E Motor Control Centers	Seismic interaction concern. Not tied (bolted) to adjacent MCC 1(2)AP47E and may impact MCC during seismic event.	Interaction will be evaluated on a case-by-case basis. Bolt adjacent MCCs together as required.	Interaction will be evaluated on a case-by-case basis. Bolt adjacent MCCs together as required.	MCC's are bolted to adjacent MCC's. 7/31/2003 11/15/2003

Table G-1 Page 2 of 6

Equipment ID	Description of Condition / Vulnerability*	IPEEE Report Proposed Resolution of Condition**	Actual Resolution of Condition	Resolution Date
1(2)DG01KA 1(2)DG01KB	Potential if overhead hoist is parked near jacket water cooler because chain fall from hoist could impact sight glass on cooler. None of the 4 hoists were found in this condition, but no procedure exists as to where the hoist is parked during outages.	Hoists have been relocated and chains have been secured to eliminate potential interaction. Direction to be provided in work package process.	Hoists have been relocated and chains have been secured.	6/27/1997
2SX112B	Outlier due to power cable pull box in contact with overhead steel	The potential interaction will be evaluated.	Condulet and solenoid valve were adjusted in field to provide additional clearances. W/O 98108903-01	10/19/1999
1(2)SX178	Outlier due to seismic interaction (impact) potential with adjacent structural member.	The potential interaction will be evaluated.	Evaluated Found Acceptable ECR 75963	3/26/1999
1(2)PL07J 1(2)PL08J	Interaction hazard due to a hearing booth (like a portable phone booth on legs) adjacent to panel which, even though item is chained off, can still roll into panel or tip over into panel.	Hearing booths will be relocated or properly secured to eliminate the potential seismic interaction.	Hearing booths were relocated and chained to eliminate potential seismic interaction. ECR 82983	8/24/2000
2DC02E Station Batteries	1) Overhead lights hung on chains with open S-hooks.	S-hooks have been closed.	S-hooks have been closed.	6/27/1997

Equipment ID	Description of Condition / Vulnerability*	IPEEE Report Proposed Resolution of Condition**	Actual Resolution of Condition	Resolution Date
1(2)DC03E 1(2)DC05E Battery Charger & Distribution Center Bus	Adjacent cabinets not bolted together.	Interaction will be evaluated on a case-by-case basis. Bolt adjacent cabinets together as required.	Interactions were evaluated that addressed the loads for panels and concluded that they were acceptable when linked together.	7/31/2003 11/15/2003
1PL04J 1PL05J 1PL06J	Overhead light on chains is unlatched – maintenance item	The chain has been reattached.	The chain has been reattached.	6/27/1997
(2)DC04E (2)DC06E Battery Charger & Distribution Center Bus	Adjacent cabinets not bolted together.	Interaction will be evaluated on a case-by-case basis. Bolt adjacent cabinets together as required.	Interactions were evaluated that addressed the loads for panels and concluded that they were acceptable when linked together.	11/15/2003
1RD05E 2RD05E Reactor Trip Switchgear	Seismic interaction concern. Not tied (bolted) to adjacent 1(2)RD03E. May impact during seismic event	Interaction will be evaluated on a case-by-case basis. Bolt adjacent cabinets together as required.	Interactions were evaluated that addressed the loads for panels and concluded that they were acceptable when linked together.	7/31/2003 11/15/2003

Table G-1 Page 4 of 6



