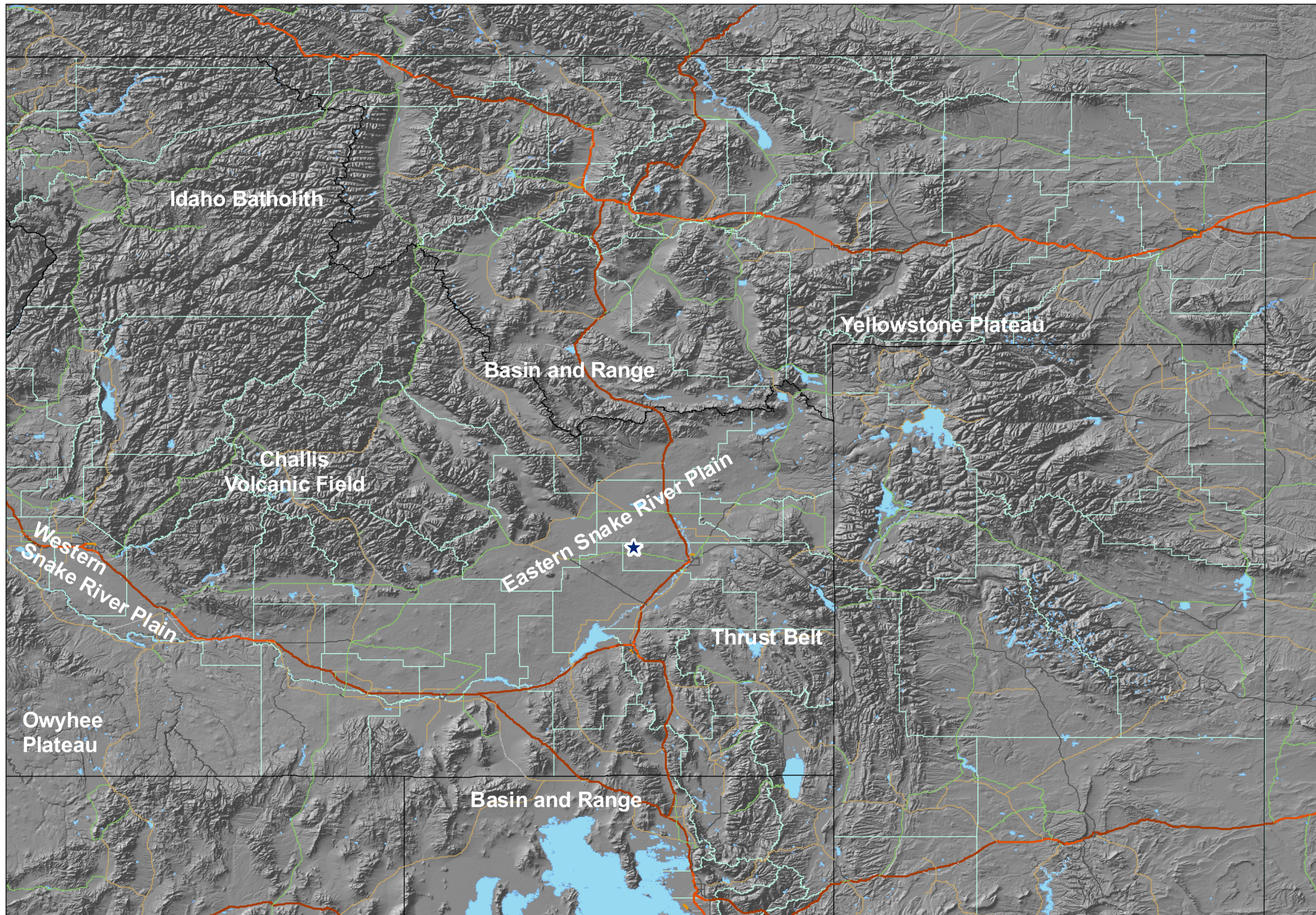
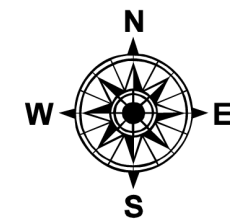


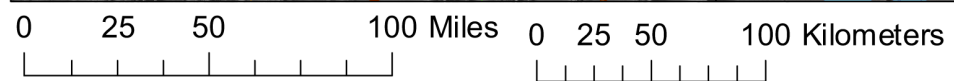
Figures



Map Description
 ★ Eagle Rock Enrichment Facility



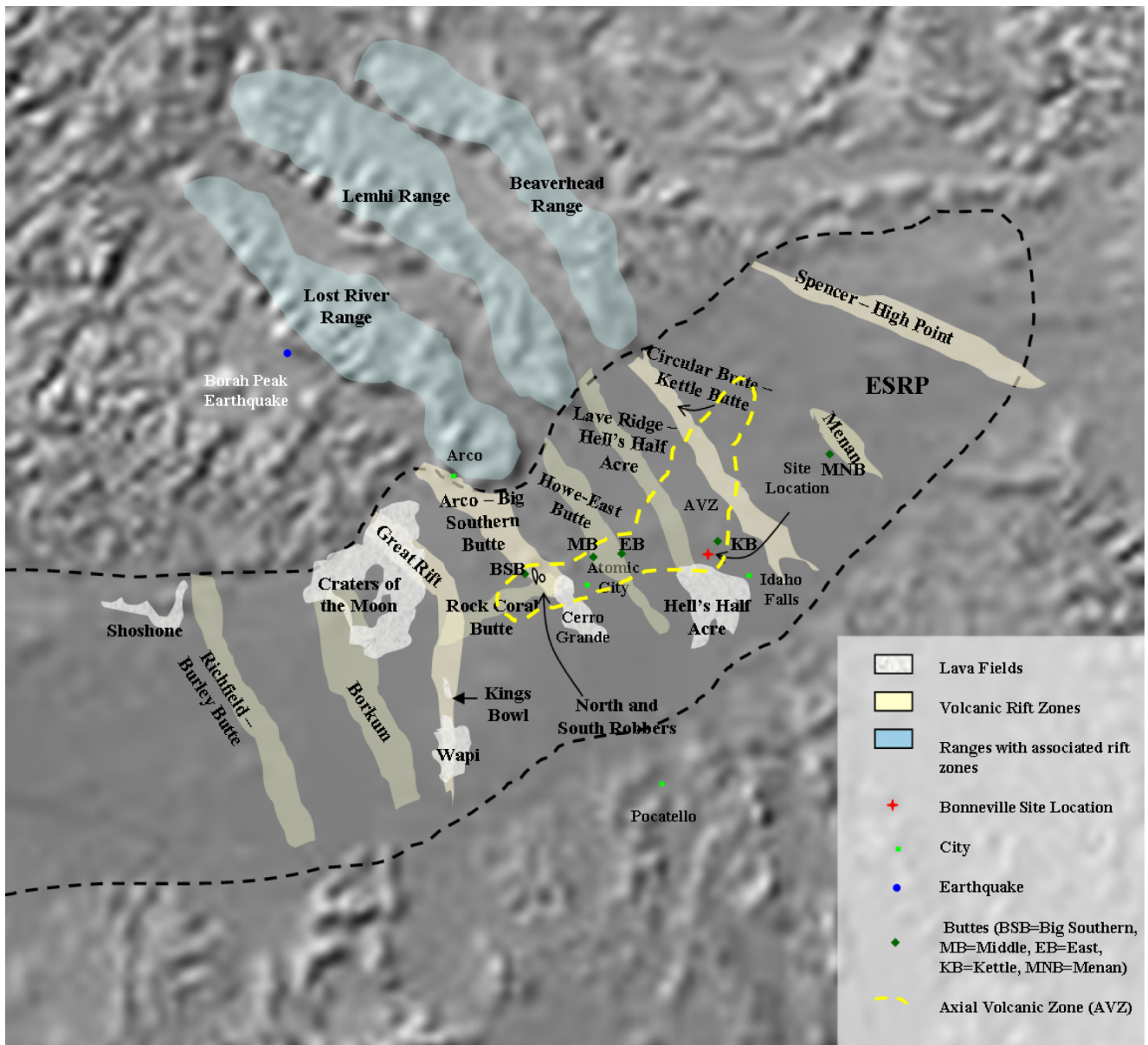
Shaded Relief Base Map from
 ESRI ArcGIS 9 Media Kit



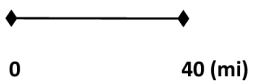
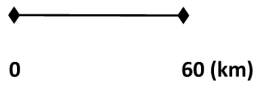
Probabilistic Seismic Hazard Assessment for the Eagle Rock Enrichment Facility	Regional Physiographic Regions
WGE, Inc. Oct. 28, 2008	FIGURE 1

Eon		Era	Period	Epoch	Ma		
Phanerozoic	Cenozoic	Quarternary		Holocene	-0.01		
				Pleistocene	-1.8		
		Tertiary		Neogene	Pliocene	-5.3	
					Miocene	-23.7	
				Paleogene		Oligocene	-33.7
						Eocene	-54.8
						Paleocene	-65.0
		Mesozoic		Cretaceous		-144	
				Jurassic		-206	
	Triassic			-248			
	Paleozoic		Permian		-290		
			Pennsylvanian		-323		
			Mississippian		-354		
			Devonian		-417		
			Silurian		-443		
			Ordovician		-490		
			Cambrian		-543		
	Precambrian	Proterozoic				-2500	
		Archean				-4500	

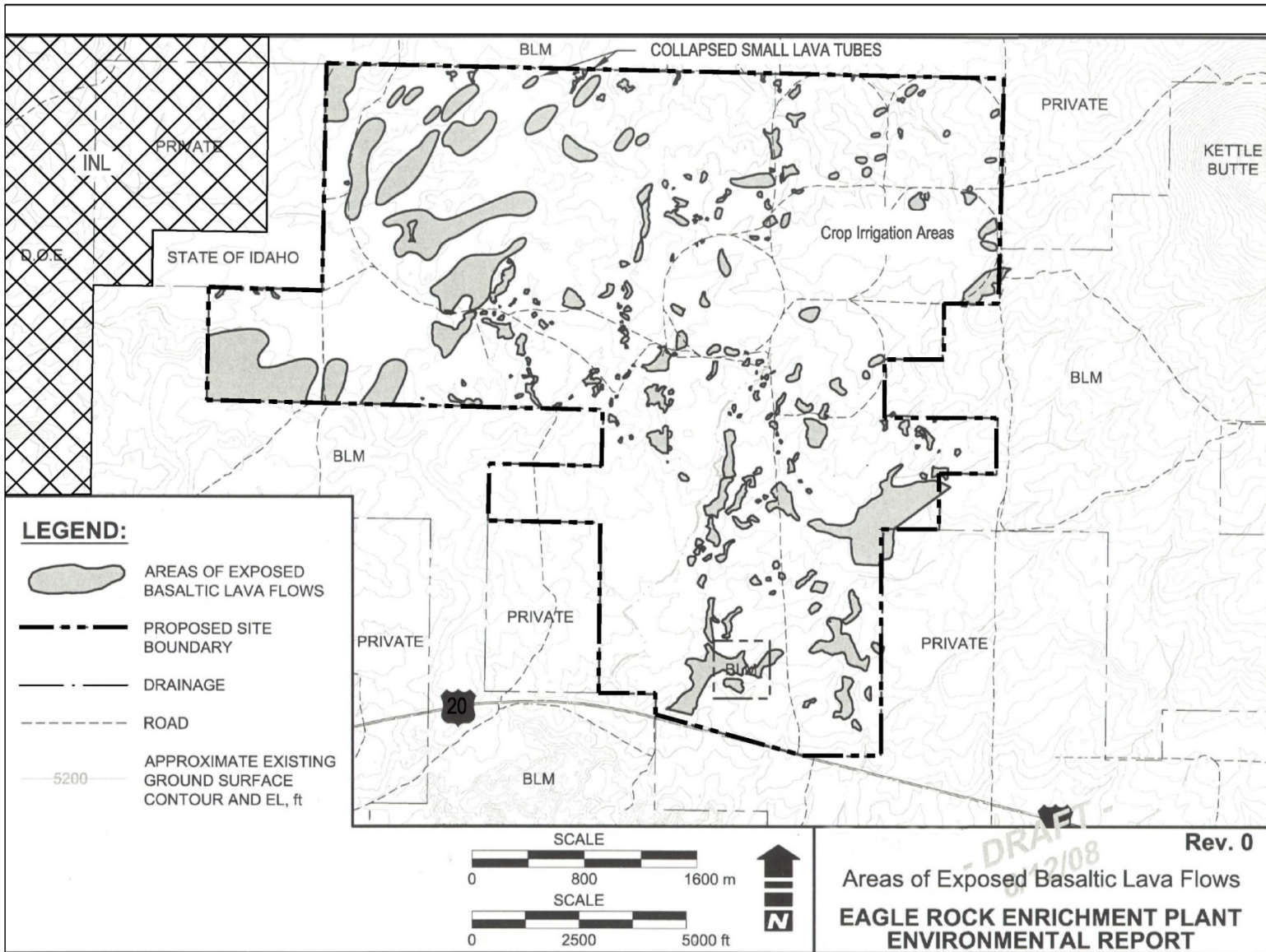
Probabilistic Seismic Hazard Assessment for the Eagle Rock Enrichment Facility	Geologic Time Scale
WGE, Inc. Oct. 28, 2008	FIGURE 2



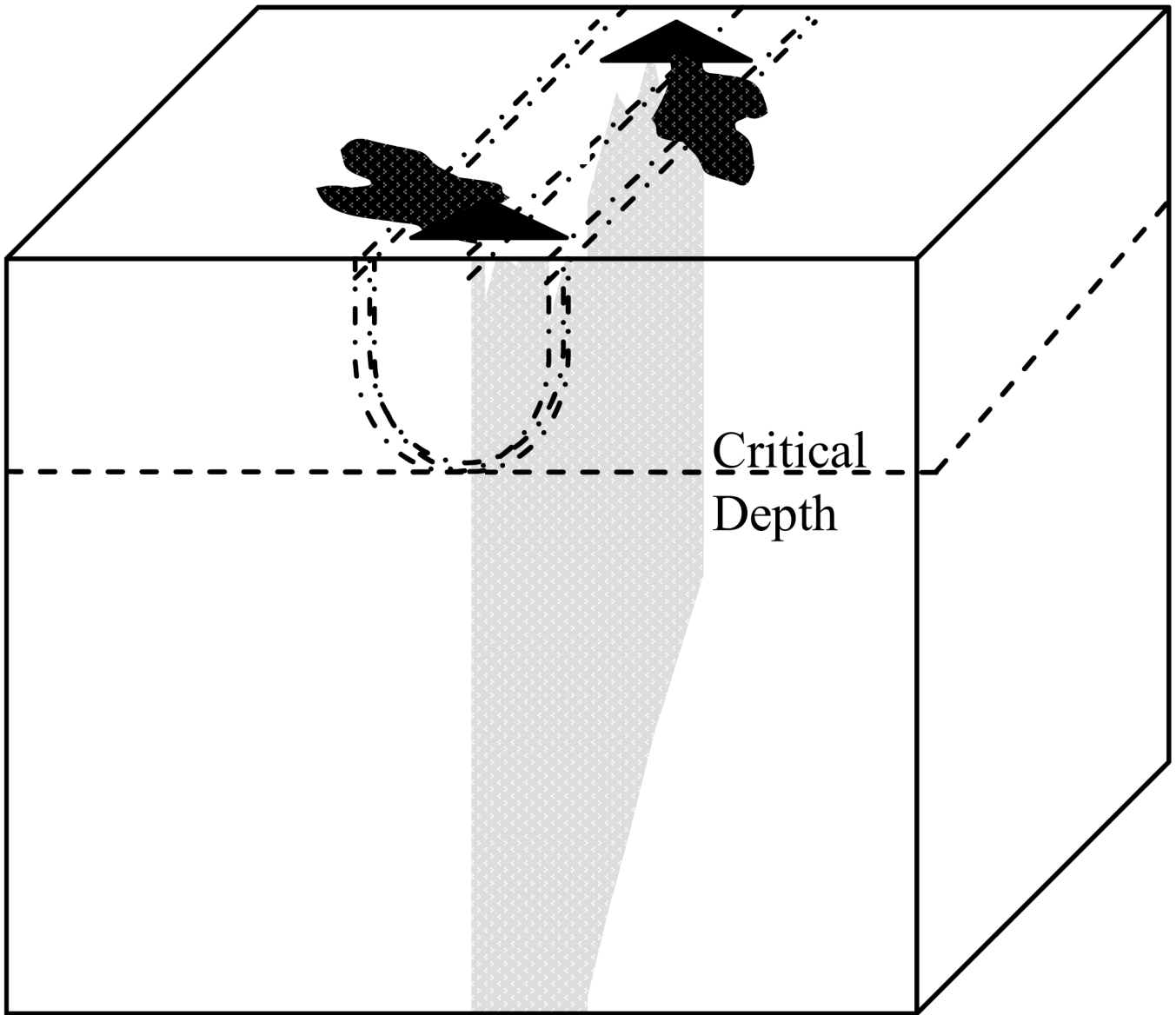
SCALE



Probabilistic Seismic Hazard Assessment for the Eagle Rock Enrichment Facility	Local Geology
WGE, Inc. Oct. 28, 2008	FIGURE 3

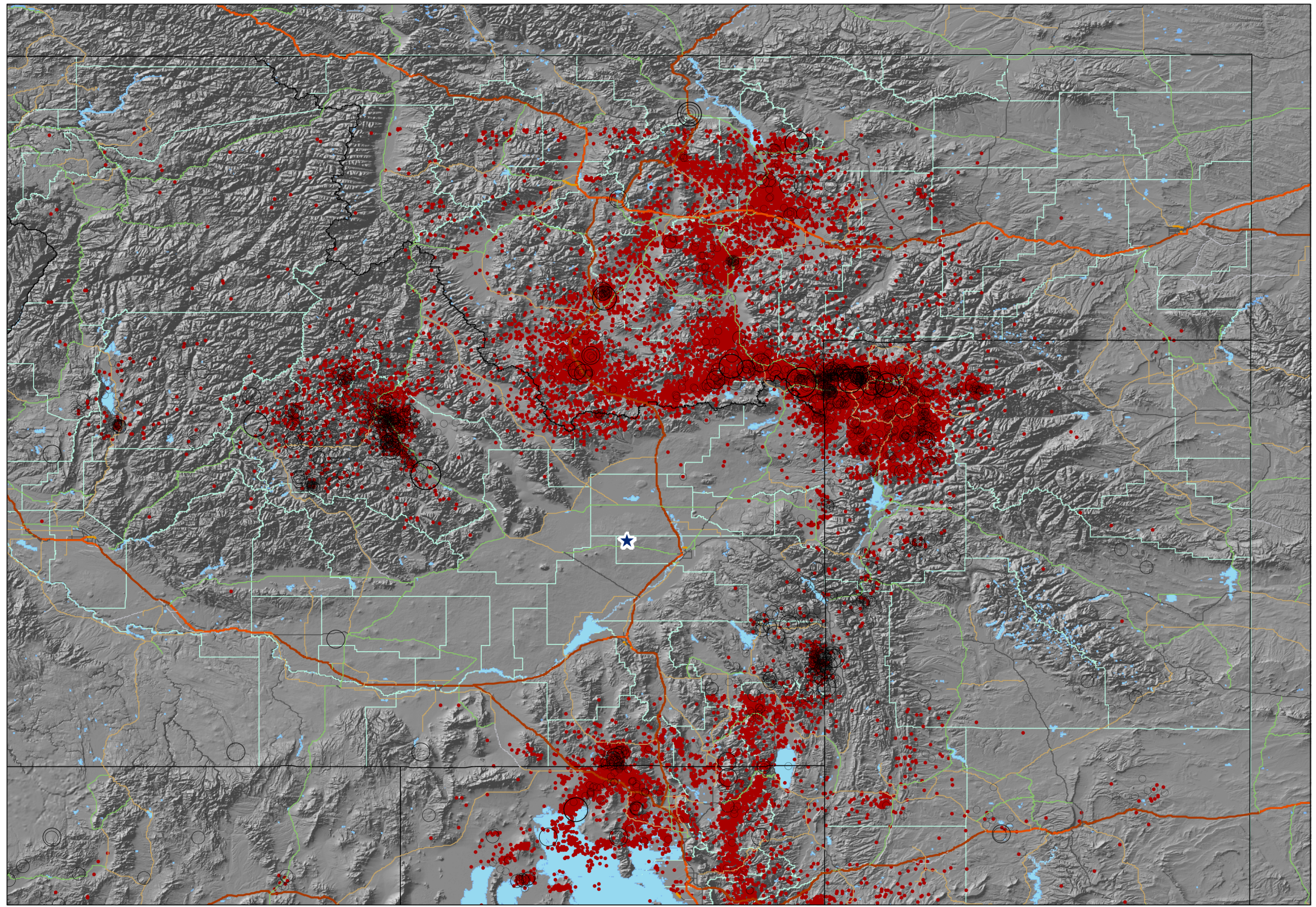


Probabilistic Seismic Hazard Assessment for the Eagle Rock Enrichment Facility	Areas of Exposed Basaltic Lava Flows EREF Site
WGE, Inc. Oct. 28, 2008	FIGURE 4



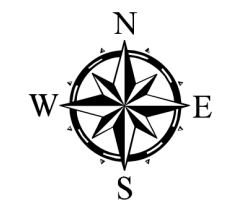
Dike (gray) emplacement model with tension cracks (dashed-dot lines). Critical depth (dashed) based on depth at which stresses begin to produce tension cracks at depth. Modified from Kuntz et al. (2002).

Probabilistic Seismic Hazard Assessment for the Eagle Rock Enrichment Facility	Model for Dike Emplacement
WGE, Inc. Oct. 28, 2008	FIGURE 5



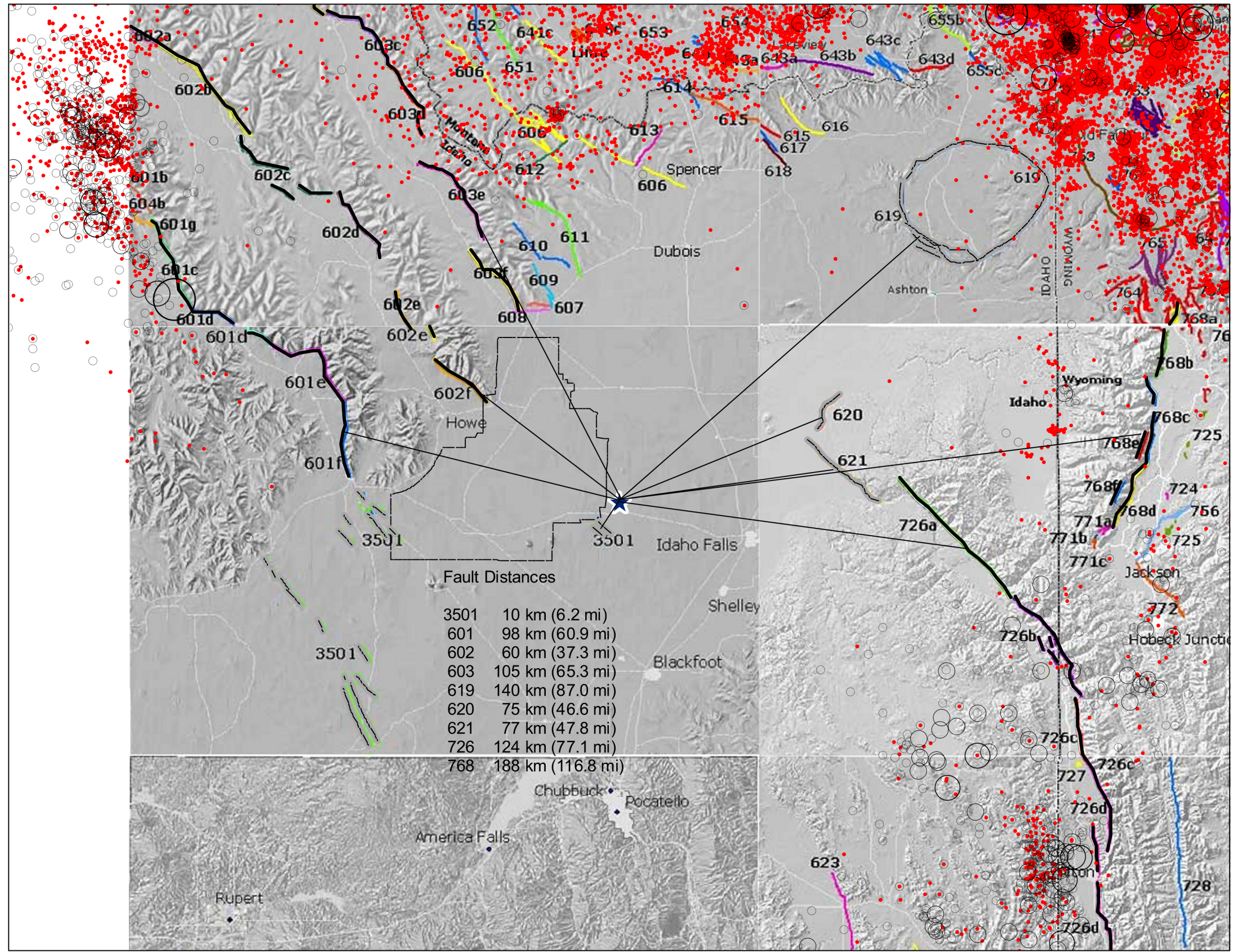
Map Description

- ★ SITE
- Magnitude ≥ 3
- MAG
- 3.0 - 4.0
- 4.1 - 5.0
- 5.1 - 6.0
- 6.1 - 7.0
- 7.1 - 8.0
- Magnitude < 3



0 25 50 100 Miles 0 25 50 100 Kilometers

Probabilistic Seismic Hazard Assessment for the Eagle Rock Enrichment Facility	Regional Seismicity Through June 2008
WGE, Inc. Oct. 28, 2008	FIGURE 6

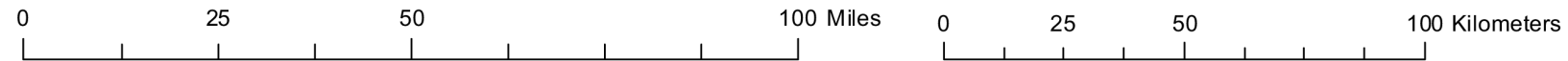


Map Description

- ★ SITE
- INL
- Magnitude ≥ 3.0
- MAG
- 3.0 - 4.0
- 4.1 - 5.0
- 5.1 - 6.0
- 6.1 - 7.0
- 7.1 - 8.0
- Magnitude < 3.0
- Q 601 Lost River Fault
- Q 602 Lemhi Fault
- Q 603 Beaverhead Fault
- Q 619 Island Park Caldera
- Q 620 Rexburg Fault
- Q 621 Heise Fault
- Q 726 Grand Valley Fault
- Q 768 Teton Fault
- Q 3501 Idaho Rift System Faults

Fault Distances

3501	10 km (6.2 mi)
601	98 km (60.9 mi)
602	60 km (37.3 mi)
603	105 km (65.3 mi)
619	140 km (87.0 mi)
620	75 km (46.6 mi)
621	77 km (47.8 mi)
726	124 km (77.1 mi)
768	188 km (116.8 mi)



Probabilistic Seismic Hazard Assessment for the Eagle Rock Enrichment Facility	Regional Quaternary Faults
WGE, Inc. Oct. 28, 2008	FIGURE 7