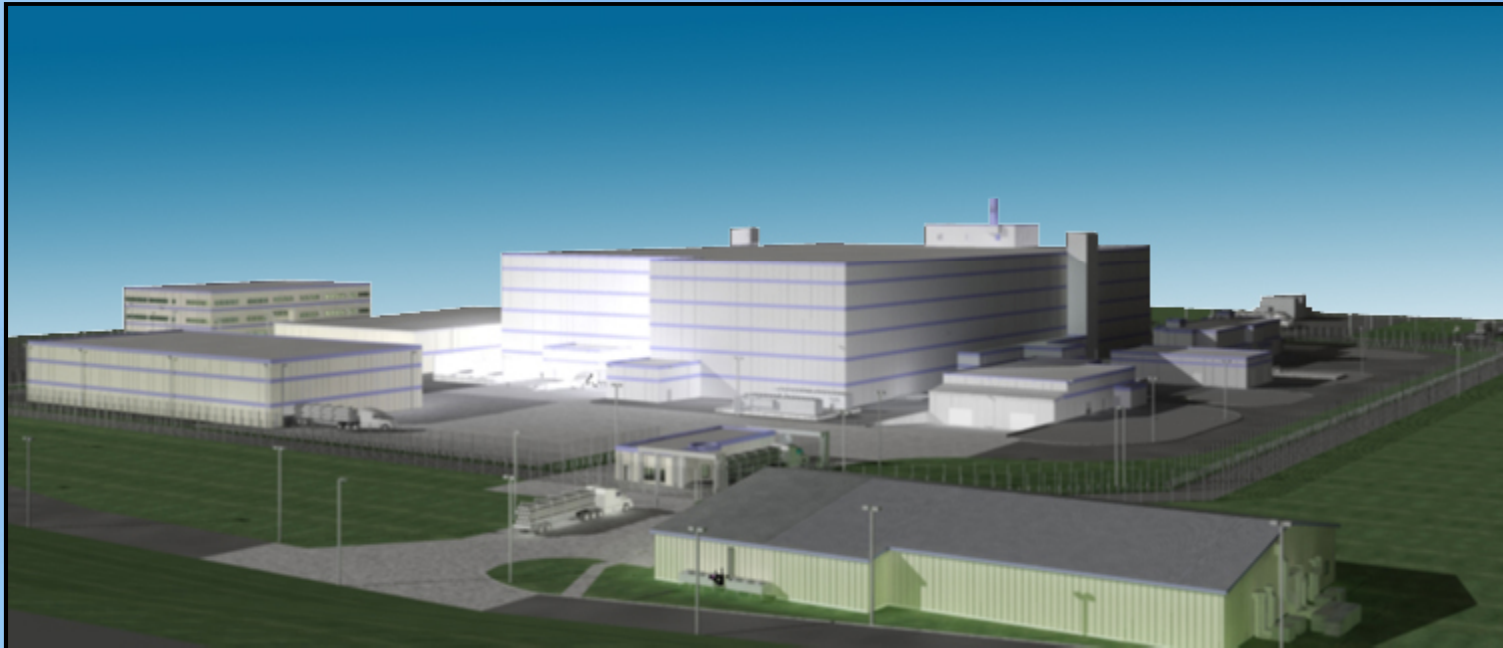


Mixed Oxide Fuel Fabrication Facility



**2009 LA/ISAS Update
November 12, 2009**

Global

- Revision date – October 2009
- Reformatted and renumbered
- Tables and figures
 - Removed if not called out in text
 - Reordered consistent with order they are referred to in text
- Removed blank pages, separator pages

License Application

- Chapter 1, *General Information*
 - Minor clarifications and updates
- Chapters 2, *Financial Qualifications*
 - No changes
- Chapters 3, *Protection of Classified Matter*
 - No changes

License Application

- Chapter 4, *Organization and Administration*
 - Alignment with Construction Authorization Request (CAR)
 - Current operations organization
 - Criticality RAIs
 - Minor clarifications and updates

License Application

- Chapter 5, *Safety Program*
 - ISA RAIs
 - Setpoint methodology (RAIs)
 - Management measures (nuclear safety evaluations, RAIs)

License Application

- Chapter 6, *Nuclear Safety Criticality*
 - Clarifications
 - Criticality RAIs
- Chapter 7, *Fire Protection*
 - Clarifications
 - Design basis section
 - Fire protection RAIs

License Application

- Chapter 8, *Chemical Safety*
 - Chemical safety RAIs
 - Supporting document revisions
- Chapter 9, *Radiation Safety*
 - RAIs
 - Minor clarifications
- Chapter 10, *Environmental Protection*
 - RAIs
 - Minor clarifications

License Application

- Chapter 11, *Plant Systems*
 - 11.0, *Plant Systems*
 - Included discussion of baseline design criteria (previously in Chapter 5)
 - 11.1, *MOX Process Description*
 - Included new Table 11-2 to cross reference codes and standards for IROFS in individual units
 - Revised level of detail (ISAS level of detail not changed)
 - Individual units reference Table 11-2 for IROFS design basis codes and standards
 - Minor changes and clarifications

License Application

- Chapter 11, *Plant Systems (con't)*
 - 11.2, *AP Process Systems*
 - Included new Table 11.2-4 to cross reference codes and standards for IROFS in individual units
 - Revised level of detail
 - Individual units reference Table 11.2-4 for IROFS design basis codes and standards
 - Minor changes and clarifications
 - 11.3, *HVAC and Confinement Systems*
 - RAI response driven changes
 - Included design basis section
 - Level of detail
 - Minor changes and clarifications

License Application

- Chapter 11, *Plant Systems (con't)*
 - 11.4, *Electrical Systems*, 11.5, *I&C Systems*
 - RAI response driven changes
 - Non-IROFS level of detail
 - Included design basis section
 - Minor changes and clarifications
 - 11.6, *Material Handling Equipment*
 - Included design basis section
 - 11.7, *Fluid Transport Systems*
 - Non-IROFS level of detail
 - Included design basis section

License Application

- Chapter 11, *Plant Systems (con't)*
 - 11.8, *Fluid Systems*
 - Non-IROFS level of detail
 - Included design basis section
 - Minor changes and clarifications
 - 11.9, *Heavy Lift Cranes*
 - No changes
 - 11.10, *Laboratory*
 - Non-IROFS level of detail
 - Included references to design basis
 - Minor changes and clarifications

License Application

- Chapter 12 *Human Factors Engineering*
 - RAI response driven changes
 - Minor changes and clarifications
- Chapters 13 *Safeguards and Security*, 14 *Emergency Management*
 - No changes
- Chapter 15 *Management Measures*
 - Rewritten consistent with RAIs
- Chapter 16 *Authorizations and Exemptions*
 - Moved exemption requests
 - Moved and enhanced discussion of changes to license application

Integrated Safety Analysis Summary

- Chapter 1, *Overview*
 - Minor editorial changes
- Chapter 2, *General Site Description*
 - Minor clarifications and updates
- Chapter 3, *Facility Description*
 - Minor clarifications and updates

Integrated Safety Analysis Summary

- Chapter 4, *Process and System Descriptions*
 - Minor project changes and clarifications
 - RAI responses
- Chapter 5, *General ISA Method, ISA Team, & ISA Results*
 - RAI responses and consistency with LA Chapter 5 changes
 - RAI responses
 - Minor project changes and clarifications

Summary

- Majority of changes to LA and ISAS due to RAI responses
- Reformatting based on electronic submittal
- Level of detail changes in LA Chapter 11
- Explicit statements of design basis