



South Texas Project Electric Generating Station P.O. Box 289 Wadsworth, Texas 77483

April
~~August~~ 30, 2009
NOC-AE-09002421
File No.: G25
10 CFR 50.36b
STI: 32462915

U. S. Nuclear Regulatory Commission
Attention: Document Control Desk
One White Flint North
11555 Rockville Pike
Rockville, MD 20852-2738

South Texas Project
Units 1 and 2
Docket Nos. STN 50-498, STN 50-499
2008 Annual Environmental and Annual
Radiological Environmental Operating Reports

Pursuant to South Texas Project Unit 1 Operating License NPF-76 and Unit 2 Operating License NPF-80 Appendix B, Environmental Protection Plan (Non-radiological), and Technical Specification 6.9.1.3, the STP Nuclear Operating Company provides the attached 2008 Annual Environmental and Annual Radiological Environmental Operating Reports.

There are no commitments included in this report.

If there are any questions, please contact either Marilyn Kistler at (361) 972-8385 or me at (361) 972-4394.

Judy F. Ashcraft
Manager,
Health Physics

MK

Attachment: 2008 Annual Environmental and Annual Radiological Environmental Operating Reports

JES
NRR

cc:
(paper copy)

Regional Administrator, Region IV
U. S. Nuclear Regulatory Commission
612 East Lamar Blvd, Suite 400
Arlington, Texas 76011-4125

Mohan C. Thadani
Senior Project Manager
U.S. Nuclear Regulatory Commission
One White Flint North (MS 7 D1)
11555 Rockville Pike
Rockville, MD 20852

Senior Resident Inspector
U. S. Nuclear Regulatory Commission
P. O. Box 289, Mail Code: MN116
Wadsworth, TX 77483

C. M. Canady
City of Austin
Electric Utility Department
721 Barton Springs Road
Austin, TX 78704

(electronic copy)

A. H. Gutterman, Esquire
Morgan, Lewis & Bockius LLP

Mohan C. Thadani
U. S. Nuclear Regulatory Commission

Kevin Howell
Catherine Callaway
Jim von Suskil
NRG South Texas LP

Ed Alarcon
J. J. Nesrsta
R. K. Temple
Kevin Pollo
City Public Service

Jon C. Wood
Cox Smith Matthews

C. Mele
City of Austin

Richard A. Ratliff
Texas Department of State Health
Services

Alice Rogers
Texas Department of State Health
Services

Attachment

South Texas Project

Units 1 and 2

2008 Annual Environmental and Annual Radiological Environmental Operating Reports



2008

South Texas Project Electric Generating Station



ANNUAL

Environmental Operating

REPORT

The 2008 Annual Environmental Operating Report for the South Texas Project Electric Generating Station combines in one report the requirements for the Annual Environmental Operating Report (Non-radiological) found in Appendix B to Facility Operating License Nos. NPF-76 and NPF-80 and the requirements for the Annual Radiological Environmental Operating Report found in Part A of the station's Offsite Dose Calculation Manual.




Graphics and artwork performed by Barbara Carnley

*Photography performed by: Harry Dannhardt, Virgil Fox, Rick Gangluff,
Gwenna Kelton, Gary Parkey, Breck Sacra and Paul Travis*

Cover photo by: Virgil Fox

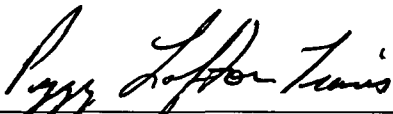
**Completed
in accordance with
Technical Specifications
for
United States Nuclear Regulatory Commission
License Nos.
NPF-76 & NPF-80
April 2009**

Authored by:




J. Darrell Sherwood, Ph.D.
Supervisor
Health Physics Division

and



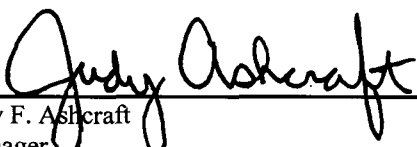
Peggy Lofton Travis, J.D., CHMM
Staff Consultant
Chemistry Division

Technical Review:



Leonard M. Earls, Ph.D., CHP
Health Physicist
Health Physics Division

Approved by:



Judy F. Ashcraft
Manager
Health Physics Division

**2008
Annual Environmental
Operating Report**

SOUTH TEXAS PROJECT ELECTRIC GENERATING STATION

Table of Contents

	Page
Executive Summary	1-1
Site and Area Description	2-1
Non-Radiological Environmental Introduction and Summary	3-1
Non-Radiological Environmental Operating Report	4-1
Environmental Conditions	
Aquatic and Ecological Monitoring	4-2
Water Quality Management	4-3
Air Quality Management	4-6
Non-Radioactive Waste Management	4-7
Chemical Control and Management	4-10
Environmental Protection Plan Status	4-11
Radiological Environmental Introduction and Summary	5-1
Radiological Environmental Operating Report	6-1
Program Description	6-1
NEI Groundwater Protection Initiative.....	6-1
Analysis of Results and Trends	6-5
Land Use Census	6-11
Quality Assurance	6-12
Program Deviations.....	6-13
List of Tables	
Table 1: Radiological Environmental Monitoring Program	6-14
Table 2: Sample Media and Location Descriptions	6-16
Table 3: 2008 Radiological Environmental Monitoring Program Analysis Summary	6-21

2008 Environmental Report

List of Figures	Page
Figure 2-1: Plant Water Systems Diagram	2-2
Figure 4-1: 2008 Nonradioactive Waste Management	4-7
Figure 4-2: 2008 Nonradioactive Waste Generation	4-9
Figure 4-3: Hazardous Waste Generation Historical Comparison	4-9
Figure 6-1: Radiological Environmental Monitoring Program Designated Sample Location Map	6-2
Figure 6-2: Radiological Environmental Monitoring Program Onsite Sampling Location Map	6-3
Figure 6-3: Radiological Environmental Monitoring Program Zone Location Map	6-4
Figure 6-4: Historical Comparison of Average Quarterly Beta Activity	6-6
Figure 6-5: Environmental Dosimeter Comparisons	6-6
Figure 6-6: Historical Comparison of Cobalt-58 and Cobalt-60 in Main Cooling Reservoir Sediment	6-7
Figure 6-7: Calculated Cumulative Curies of Cobalt-60 in the Main Cooling Reservoir	6-7
Figure 6-8: Historical Comparison of Tritium Added to and Remaining in the Main Cooling Reservoir	6-8
Figure 6-9: Historical Comparison of Tritium Activity in Reservoir Relief Wells	6-9
Figure 6-10: Historical Comparison of Tritium Activity in Surface Water	6-9
Figure 6-11: Historical Comparison of Tritium Activity in Shallow Aquifer Ground Water	6-10
Figure 6-12: Tritium Activity in Shallow Ground Water West of the Main Cooling Reservoir	6-10
Figure 6-13: 2008 Radiological Laboratory Quality Assurance Program Performance	6-12



Photo By: Gary Parkey

Executive Summary



Photo By: Virgil Fox

Chapter 1

Executive Summary

The South Texas Project continues to operate with no adverse effect on the population or the environment. The exposure for people living in the area is maintained at less than one millirem per year. Environmental programs at the site monitor known and predictable relationships between the operation of the South Texas Project and the surrounding area. These monitoring programs verify that the operation of the South Texas Project has no impact offsite and is well within state and federal regulations and guidelines. These programs are verified by the state of Texas through collection and analysis of samples and placement of the state's thermoluminescent dosimeters and other onsite and offsite inspections.

This report describes the environmental monitoring programs, radiological and non-radiological, conducted at the South Texas Project during 2008. Included in this report are the Environmental Protection Plan Status, the results of the Radiological Environmental Monitoring Program, and the Land Use Census.

Non-radiological environmental monitoring is performed each year as part of the station's overall Environmental Protection Program which is intended to provide for protection of non-radiological environmental values during station operations. Non-radiological monitoring encompasses, as a minimum, water quality, air quality, waste generation and minimization, local aquatic and terrestrial ecological conditions. In 2008, non-radiological monitoring by the station confirmed that the South Texas Project's efforts to honor and protect local environmental conditions were successful. The South Texas Project continued to be rated by the Texas Commission on Environmental Quality as a high performer in the area of environmental compliance, continued to provide high-quality habitat areas for a variety of flora and fauna, and continued to have no indications of negative non-radiological impacts to local environmental conditions.

Radiation and radioactivity in the environment are routinely monitored within a 15-mile radius of the South Texas Project. Sampling locations are selected using weather, land use, and water use information. Two types of sampling locations are used. The first type, control stations, are located in areas that are beyond measurable influence of the South Texas Project or any other nuclear facility. The sample results from these stations are used to explain radiation from sources other than the South Texas Project. Indicator stations are the second type of stations. The samples from these stations measure any radiation contributed to the environment by the project. Indicator stations are located in areas close to the South Texas Project where any plant releases would be at the highest concentration.

Prior to initial operation of the South Texas Project, samples were collected and analyzed to determine the amount of radioactivity present in the area. These results are used as a "pre-operational baseline." Results from the indicator stations are compared to both current control sample results and the pre-operational baseline values to determine if changes in radioactivity levels are attributable to station operations or other causes such as previous nuclear weapons testing programs and natural variations.

Radioactivity levels in the South Texas Project's environment frequently fall below the minimum detection capabilities of the state-of-the-art scientific instruments. Samples with radiation levels that cannot be detected are below the Lower Limits of Detection. The United States Nuclear Regulatory Commission requires that equipment used for radiological monitoring must be able to detect specified minimum limits for certain types of samples. This ensures that radiation measurements are sufficiently sensitive to

2008 Environmental Report

detect small changes in the environment. The United States Nuclear Regulatory Commission also has a required reporting level. Licensed nuclear facilities must prepare a special report and increase their sampling if any measured radiation level is equal to or greater than this reporting level. No sample from the South Texas Project has ever reached or exceeded this reporting level.

Measurements made are divided into four categories or pathways based upon how the results may affect the public. Airborne, waterborne, ingestion, and direct radiation are the four pathways that are sampled. Each pathway is described below.

- ★ The airborne pathway is sampled in areas around the South Texas Project by measuring radioactivity of iodine and particulate air filters. The 2008 airborne results were similar to pre-operational levels with only naturally occurring radioactive material unrelated to the operation of the South Texas Project detected.
- ★ The waterborne pathway includes samples taken from surface water, ground water, and drinking water. Also included in this path are sediment samples taken from the Main Cooling Reservoir and the Colorado River. Tritium was the only man-made isotope consistently detected in water samples and was measured in the shallow aquifer, the Main Cooling Reservoir, ditches, and sloughs onsite. The levels of tritium found were near the concentration of the Main Cooling Reservoir or lower. Additional onsite wells have been sampled to map tritium migration. The average tritium level in the Main Cooling Reservoir remained similar to past years, remained below United States Nuclear Regulatory Commission reporting limits, and remained within United States Environmental Protection Agency drinking water standards. Previously detected plant-related isotopes (Co-60 and Co-58) were not detected in the reservoir sediment this year. One sample had detectable Cs-137 which is present in the environment and was detected in preoperational concentrations. Offsite sediment samples continue to show no radioactivity from the South Texas Project. This indicates that the station produces no detectable effect offsite from this pathway.
- ★ The ingestion pathway includes broadleaf vegetation, agricultural products, and food products. Naturally occurring isotopes were detected at average environmental levels in the samples. The data indicated that there were no man-made isotopes detected in these types of samples.
- ★ The direct exposure pathway measures environmental radiation doses using thermoluminescent dosimeters. These results are consistent with the readings from previous years and continue to show no effect from plant operations.

The South Texas Project continues to operate with no negative effect on the population or the environment. The exposure for people living in the area is maintained at less than one millirem per year. Environmental programs at the site monitor known and predictable relationships between the operation of the South Texas Project and the surrounding area. These monitoring programs verify that the operation of the South Texas Project has no impact offsite and is well within state and federal regulations and guidelines. These programs are verified by the state of Texas through collection and analysis of samples, placement of the state's thermoluminescent dosimeters, and other onsite and offsite inspections.

Executive Summary



Photo By: Gwenna Kelton

Site and Area Description

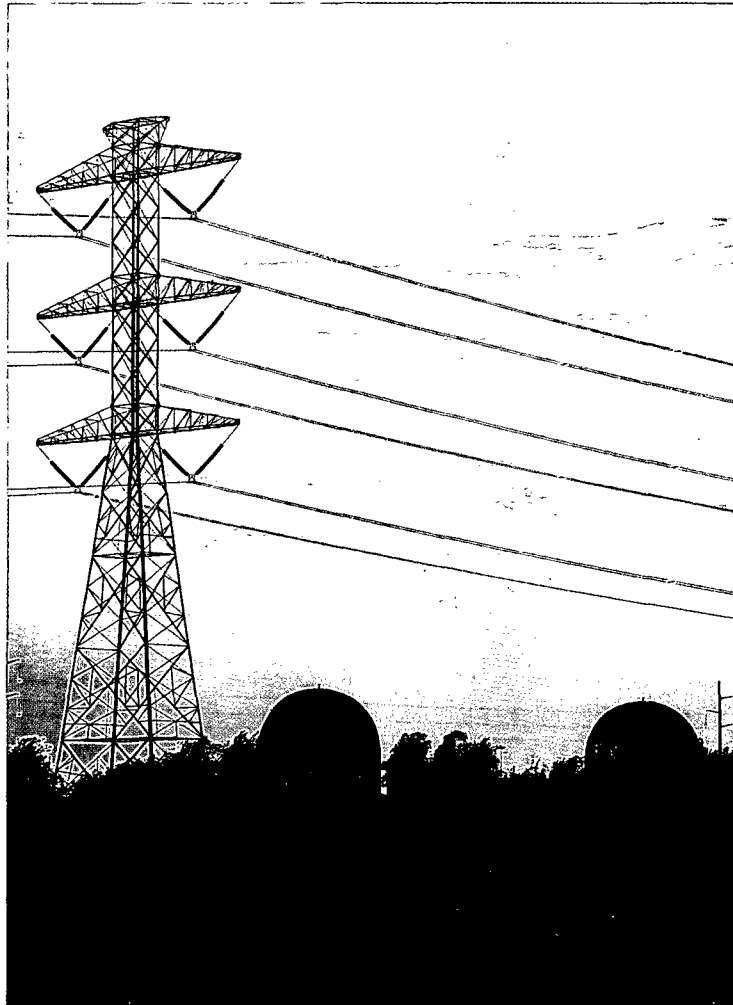


Photo By: Virgil Fox

Chapter 2

Site and Area Description

The South Texas Project is located on 12,220 acres in Matagorda County, Texas, approximately 15 miles southwest of Bay City along the west bank of the Colorado River. The South Texas Project Electric Generating Station is owned by NRG Energy, Inc., Austin Energy, and CPS Energy as tenants in common. Houston Lighting & Power Company was the original project manager of the South Texas Project and was responsible for the engineering, design, licensing, construction, startup, and initial commercial operation of the two-unit facility. In 1997, the STP Nuclear Operating Company assumed operational control of the South Texas Project and responsibility for implementation of associated environmental programs.

The South Texas Project has two 1,350-megawatt Westinghouse pressurized water reactors. Unit 1 received a low-power testing license on August 21, 1987, obtained initial criticality on March 8, 1988, and was declared commercially operational on August 25, 1988. Unit 2 received a low-power testing license on December 16, 1988, obtained initial criticality on March 12, 1989, and was declared commercially operational on June 19, 1989. The South Texas Project initiated project activities in 2008 to pursue renewal of the operating licenses for Units 1 and 2 from the Nuclear Regulatory Commission (NRC). This process will ensure that the plant's original design and current conditions and programs can allow the facility to continue operating safely beyond its original license deadline. The combined units produce enough electricity to serve more than two million homes and businesses throughout Texas. With nearly 1300 employees, the STP Nuclear Operating Company is the largest employer and source of revenue for Matagorda County.

In September of 2007, NRG Energy, Inc., CPS Energy, and STP Nuclear Operating Company filed a Combined Construction and Operating License Application (COLA) with the NRC to build and operate two additional units, Units 3 and 4, at the South Texas Project. In September of 2008, STP Nuclear Operating Company filed a revision to the COLA application to reflect a change to Toshiba as the engineering, procurement, and construction contractor for Units 3 and 4. The proposed units will be built adjacent to Units 1 and 2 on existing station property. The facility's 12,220-acre site and 7,000-acre cooling reservoir were originally designed for four units. The proposed new units will produce 2,700 megawatts, provide enough energy to serve an additional two million homes and businesses, create an additional 800 - 1000 direct jobs, and provide other substantial local economic benefits.



Photo By: Gwenna Kelton

2008 Environmental Report

Nuclear energy, provides long-term cost stability, promotes energy independence, and is our nation's largest source of carbon-free energy. As we work collectively to secure our state's long-term energy future, nuclear energy will continue to play an increasingly important role.

How the South Texas Project Works

Fossil-fueled and nuclear-powered steam generating plants operate on the same principle. Fuel is used to produce heat to convert water into high-pressure steam. The steam is directed through a turbine to turn a generator. In a fossil fuel plant, either coal, lignite, oil or natural gas is burned in a boiler to produce the heat. In a nuclear plant, the reactor replaces the boiler and the "fissioning" or splitting of uranium atoms inside the reactor produces the heat.

The fuel for a nuclear reactor is uranium. It is formed into cylindrical ceramic pellets, each about the size of the end of your little finger. One pellet has the energy potential of about a ton of coal. Millions of these pellets are stacked in fuel rods that are arranged into assemblies that make up the core of the reactor. The use of uranium allows us to conserve natural gas, oil and coal and to avoid the associated production of greenhouse gases.

The fission process and generation of usable heat begins in a nuclear reactor when control rods in the core are withdrawn. In pressurized water reactors, like those at the South Texas Project, the fuel rods heat water circulating in sealed, stainless steel piping that passes through large heat exchangers called steam generators. The water in the reactor is under pressure to prevent boiling. This is why the South Texas Project's Units 1 and 2 reactors are called "pressurized water reactors."

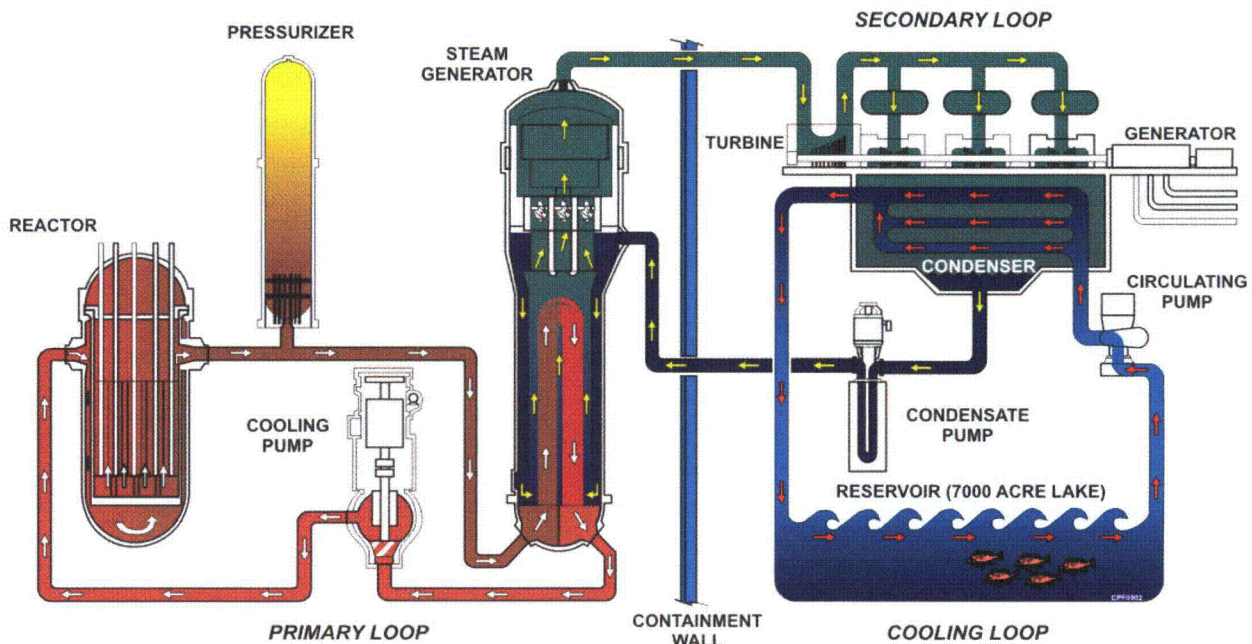


Figure 2-1

Site and Area Description

This hot, pressurized water heats a separate supply of water in the steam generators to produce steam that is directed through the blades of a turbine generator to produce electricity. The steam is then fed to a condenser where a separate supply of cooling water from the reservoir turns it back into water that is then pumped back to the steam generator for reuse. A diagram of the plant water systems is shown in Figure 2-1.

In addition to its safety systems, the South Texas Project has many built-in physical barriers that would prevent the release of radioactive materials in the unlikely event of an accident. The most visible ones are the 200-foot-tall, domed containment buildings with steel-reinforced concrete walls four feet thick. Inside each of these massive structures, two more concrete walls provide another 11 feet of shielding. The reactor vessel itself has steel walls six inches thick, and the fuel pellets inside it are sheathed in hardened metal tubes.

Nuclear energy has one of the lowest impacts on the environment. It's the most eco-efficient energy source because it produces the most electricity in relation to its minimal environmental impact. In 2007, the most recent year for which data is available, nuclear generation in the United States prevented 692.7 million metric tons of carbon dioxide, 3.04 million tons of sulfur dioxide, and 0.98 million tons of nitrogen oxide from entering the Earth's atmosphere.¹ Nuclear power plants generate approximately 74 percent of all clean-air electricity in the United States and were responsible for 36 percent of the total voluntary greenhouse gas emissions reductions reported by United States companies in 2005.² Additional information on nuclear energy and the environment can be found on the website maintained by the Nuclear Energy Institute at <http://www.nei.org>.

The Plant Site

Sixty-five of the entire 12,220 acres at the South Texas Project are occupied by the two current power plants. Plant facilities include a 7,000-acre main cooling reservoir and a 47-acre essential cooling pond. Many smaller bodies of water onsite include wetlands, Kelly Lake, drainage ditches, sloughs, and depressions. Much of the land east of the cooling reservoir is leased for cattle grazing. Approximately 1,700 acres remain in a more natural state as a lowland habitat. A 110-acre wetland habitat area was established in 1996 on previously unused land located northeast of the power plants. The area surrounding the South Texas Project is characterized by coastal plain with farmland and pasture predominating. Local relief of the area is characterized by flat land, approximately 23 feet above sea level.

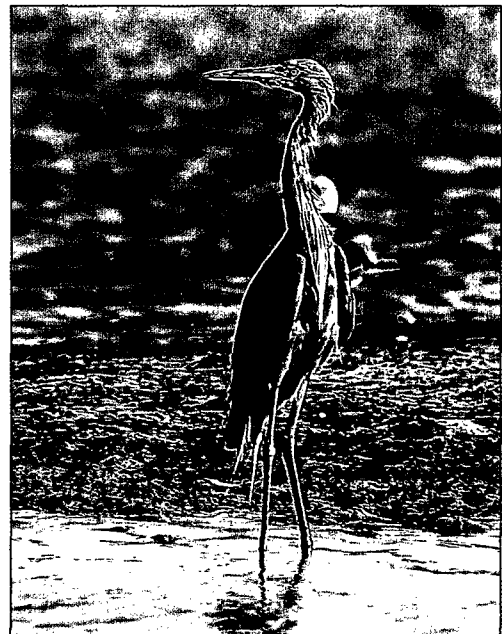


Photo By: Gwenna Kelton

¹ Nuclear Energy Institute. *Emissions Avoided by the U.S. Nuclear Industry (1995 – 2007)*.

<http://www.nei.org/resourcesandstats/documentlibrary/protectingtheenvironment/graphicsandcharts/emissionsavoidedbytheusnuclearindustryyearly/>. February 2008.

² Nuclear Energy Institute Fact Sheet. *Nuclear Energy and the Environment*.

<http://www.nei.org/keyissues/protectingtheenvironment/factsheets/nuclearenergyandtheenvironment/>. November 2008.

2008 Environmental Report

The Area

The economic base for this area primarily is agriculture-related. Most of the land near the site is used for the production of five major agricultural products: beef, rice, grain sorghum, soybeans, and cotton. In addition to the agriculture industry, there is commercial fishing in the lower Colorado River, East and West Matagorda Bays, Intracoastal Waterway and the Gulf of Mexico. Currently shrimp, oysters, crab, and fin fish such as black drum are the predominant commercial fish in the county. Aquaculture farms continue to be developed in the area with the main crop being catfish.

Although the surrounding area is heavily cultivated, significant amounts of woodlands, thicket, brush, fields, marsh, and open water exist to support wildlife. The area lies in the southern region of the central flyway and is host to an abundance of migratory birds. The local estuary environments provide the necessary habitat for a variety of fish types to complete their life cycles. The area also affords opportunity for recreational hunting and fishing.

The South Texas Project is home to many species of animals. Inhabitants include American alligators, ospreys, and several hundred deer. In winter, literally hundreds of thousands of waterfowl, principally migratory geese as well as white pelicans and the common tern, have found that the plant's 7,000-acre cooling reservoir provides a good resting place during their migrations. Since 1997, a 15-mile diameter area that includes the South Texas Project has had, with one exception, the highest number of bird species nationwide in the National Audubon Society's Annual Christmas Bird Count.

The climate of the region is subtropical maritime, with continental influence. It is characterized by short, mild winters and long, hot and humid summers. Rainfall is usually abundant throughout the year with an annual average of approximately forty-two inches. The prevailing wind direction is from the south-southeast, shifting to north-northeast for short intervals during the winter months.



Photo By: Harry Dannhardt

Site and Area Description



Photo By: Gwenna Kelton

Non-Radiological Environmental Introduction and Summary



Photo By: Gwenna Kelton

Chapter 3

Non-Radiological Environmental Introduction and Summary

Non-radiological environmental conditions and performance at the South Texas Project during 2008 remained satisfactory and demonstrated that the South Texas Project continued to operate in an environmentally responsible manner during the year. The South Texas Project achieved and maintained expected high standards of environmental performance and compliance throughout 2008.

The South Texas Project is committed to the production of electricity in a safe, reliable, and economical manner using nuclear energy. The station's programs, policies and business plan objectives also incorporate a commitment to environmental protection and sound environmental management. The dedication of station personnel who develop, implement, support, and monitor site environmental protection programs and compliance exemplify this commitment.

The station's commitment to sound environmental management is illustrated by the following environmental successes in 2008. These station successes were achieved while continuing to support development and submittal of the revised Combined Construction and Operating License Application and other activities for the proposed new units as well as supporting initiation of license renewal activities for the existing units as discussed in Chapter 2:



Photo By: Gwenna Kelton

- ★ Continued classification as a high performer by the Texas Commission on Environmental Quality based on the station's above-average environmental compliance record in all areas considered, including water quality, waste management, and air quality compliance;
- ★ Station involvement in responsible management of regional and county water resources; and,
- ★ Completion of multiple environmental regulatory agency compliance inspections with no findings or violations.

2008 Environmental Report

Everyone has a responsibility to protect the environment. Commitment to environmental responsibility is an integral component of the South Texas Project operating policy. This responsibility reaches further than mere compliance with laws and regulations to encompass the integration of sound environmental practices into our daily operational and business decisions. The people at the South Texas Project understand the need to balance economic, operational and environmental issues for the benefit of the station and the public. We recognize our responsibility to hold ourselves to the highest principles of environmental stewardship for station activities.



Photo By: Gwenna Kelton

Non-Radiological Environmental Introduction and Summary

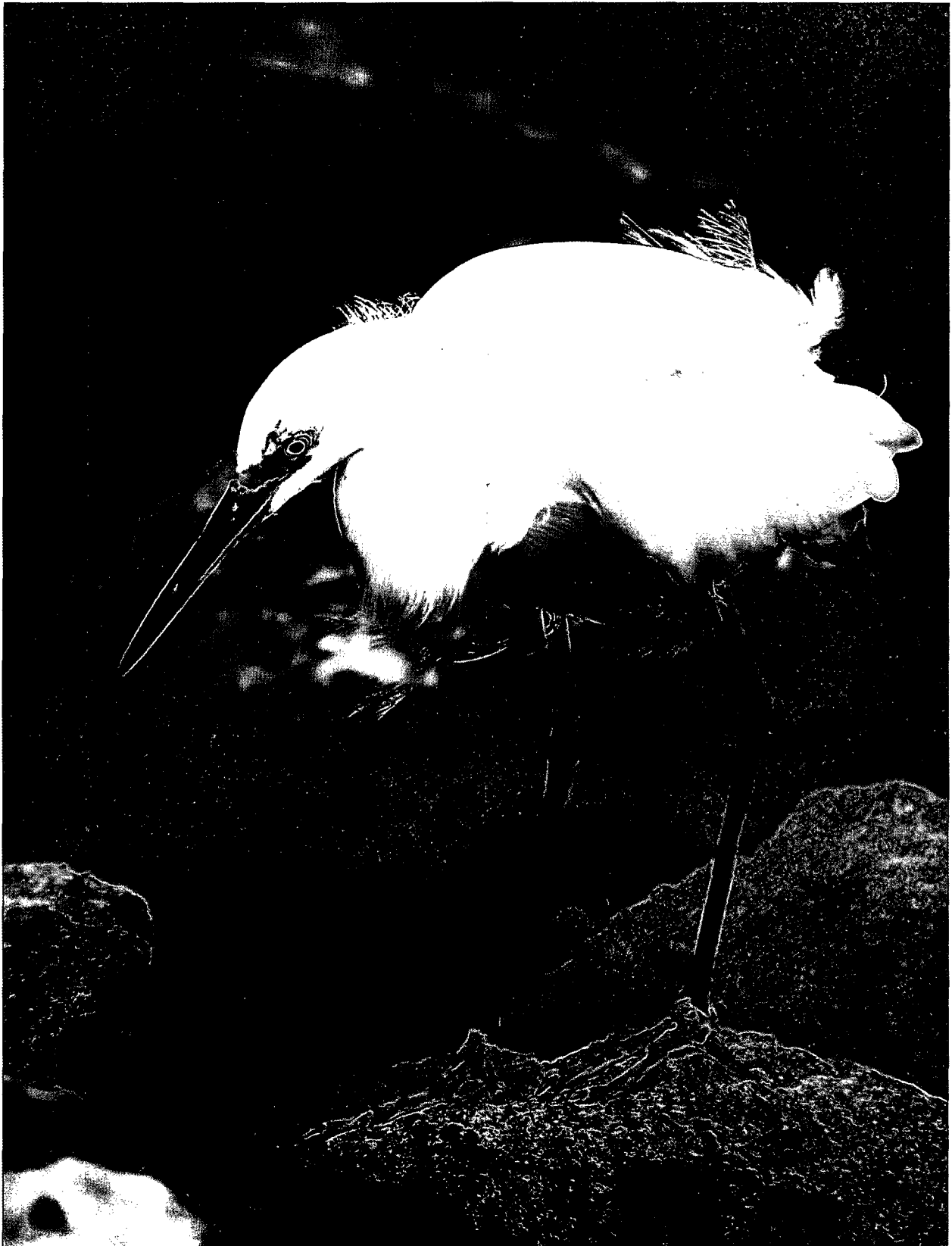


Photo By: Gwenna Kelton

Non-Radiological Environmental Operating Report



Photo by: Gwenna Kelton

Chapter 4

Non-Radiological Environmental Operating Report

ENVIRONMENTAL CONDITIONS

This section of the report describes the South Texas Project's non-radiological environmental program performance and environmental conditions from January 1 through December 31, 2008. The STP Nuclear Operating Company environmental staff closely monitors environmental conditions and performance at the South Texas Project. NRG Energy, Inc. provides support and technical assistance to the South Texas Project. In 2008, the Texas Commission on Environmental Quality conducted a compliance inspection for onsite beneficial land application with no findings or violations issued. The South Texas Project discontinued onsite beneficial land application in 2007 and opted to allow the associated permit to expire in 2008. The Texas Commission on Environmental Quality also conducted a wastewater discharge permit compliance inspection and a solid waste management compliance inspection in 2008 with no findings or violations issued for either.

The Texas Commission on Environmental Quality classified the South Texas Project as a high performer in 2008 based on the station's above-average environmental compliance record. Facilities, such as the South Texas Project, are classified by the state as a high performer, average performer, or poor performer based on that facility's compliance history. The state's classification of the South Texas Project as a high performer was based on the station's environmental performance over the last five year period. In addition, the STP Nuclear Operating Company continued to participate in the Texas Commission on Environmental Quality CLEAN TEXAS program as a bronze-level member in 2008.

The South Texas Project, along with other local industries and organizations, planned and prepared to co-sponsor and participate in the annual Matagorda County Household Hazardous Waste Collection Day scheduled for September 2008. However, the event was cancelled as the county moved quickly to prepare for and recover from Hurricane Ike which hit the Texas coast the weekend of the scheduled event. STP Nuclear Operating Company formed an employee-led group, the STP Green Team, in 2008 to encourage and promote sustainable "green" initiatives and policies at the station and among employees. The station also continued to support various bird counts and surveys in 2008 sponsored by federal and state agencies and volunteer organizations such as the annual National Audubon Society Christmas Bird Count, the Great Texas Birding Classic, and the United States Fish and Wildlife Service Colonial Waterbird Survey.

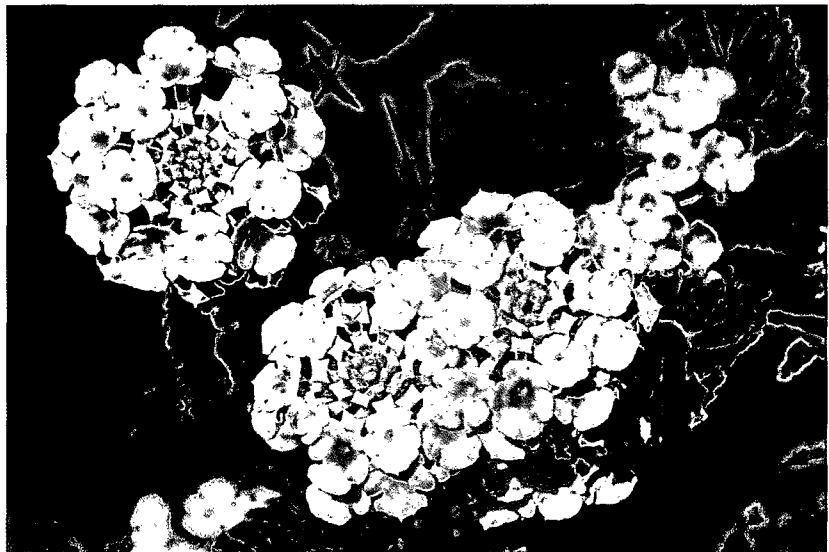


Photo by: Paul Travis

AQUATIC AND ECOLOGICAL MONITORING

The location of the South Texas Project falls within the Texas Land Resource Area designation as coastal prairie and can be divided into two broad ecological areas based on topography, soils, and vegetation. The bottomland area is a swampy, marshy area that occupies approximately 1,700 acres of the site near the Colorado River. This area provides an important habitat for birds and other wildlife. A spoil impoundment constructed in 1972 by the United States Army Corps of Engineers is included in this area. In addition, an award-winning 110-acre wetland habitat area that attracts a variety of bird groups and other wildlife was established in 1996 on previously unused land located northeast of the power plants. The remaining area of the site offers diverse habitats for mammals and several types of birds. The South Texas Project environmental staff regularly monitor the site's environs for changing conditions. Ecological conditions onsite in 2008 remained generally unchanged and satisfactory.

The South Texas Project is located on the state-sponsored Great Texas Coastal Birding Trail that spans the entire Texas Gulf Coast from Brownsville to the Louisiana border. Matagorda County, which includes the South Texas Project, consistently ranks at or near the top of the National Audubon Society's annual Christmas Bird Count for the number of species identified. Several bird species listed on the state and federal threatened or endangered species lists have been observed



Photo By: Rick Gangluff

visiting the wetland habitat and elsewhere onsite. These include the bald eagle, peregrine falcon, wood stork, white-faced ibis, brown pelican and white-tailed hawk. Additional migratory and resident bird species such as a variety of ducks, geese, turkey and pelicans (both brown and white) have been observed during informal surveys of the site's diverse natural and man-made habitats. The summer of 2007 was the first year on record that brown pelicans were observed on site. Intensive bird nesting continues throughout the lowland habitat, particularly in a heron rookery around the perimeter of Kelly Lake. U. S. Fish and Wildlife Service biologists estimate that approximately one-third of Texas' breeding adult Gull-billed Tern population, considered to be in decline, nest on the internal dikes of the Main Cooling Reservoir at the South Texas Project. The South Texas Project continues to provide vital habitat for more than an estimated 125 different species of wintering and resident birds.

The South Texas Project continues to monitor important wildlife species to detect population changes. Informal observations by station and NRG Energy, Inc. personnel continue to indicate that the site provides high-quality habitat in which a wide range of animals live. The site continues to attract extensive wildlife populations, offering a refuge for resident species as well as seasonal migrants. The lowland habitat located between the Colorado River and the east bank of the Main Cooling Reservoir offers a significant source of water year-round. These natural resource areas, in concert with numerous additional wetland and grassland areas, offer the key ingredients necessary to sustain the extensive wildlife population at the South Texas Project. Aquatic studies necessitated by the license application process associated with the proposed addition of Units 3 and 4 are discussed in the following section.

Non-Radiological Environmental Operating Report

WATER QUALITY MANAGEMENT

Water is an essential component in electricity production, and all electric utilities must comply with extensive federal, state and local water regulations. These regulations govern virtually every aspect of business operations at the South Texas Project. Water usage and wastewater treatment onsite are regulated under the Safe Drinking Water Act, the Federal Clean Water Act, and the Texas Water Quality Act. Collectively, these acts provide for the safeguarding of public drinking water supplies and maintaining the integrity of state and federal waters.

The South Texas Project uses both surface water and groundwater for station purposes. Groundwater is pumped from deep aquifer wells to provide onsite drinking water for station personnel, to replenish the Essential Cooling Pond, and for other industrial purposes onsite. Consistent with the station's environmental principles encouraging efficient water usage and conservation, groundwater usage is carefully managed to conserve this important resource. Water from the Main Cooling Reservoir and the Essential Cooling Pond is used as cooling water for plant activities. Water from the Colorado River replenishes the Main Cooling Reservoir via intermittent pumping periods. Surface water diverted to the Main Cooling Reservoir from the Colorado River accounted for approximately 90 percent of the water used at the South Texas Project in 2008. Information regarding water use in Texas can be found on the website maintained by the Texas Water Development Board at <http://www.twddb.state.tx.us/>.

Most of the water used by the South Texas Project is needed to condense steam and provide cooling for plant generating systems. The majority of this water is drawn from and returned to the station's Main Cooling Reservoir. The Main Cooling Reservoir is a 7,000-acre, above grade, off-channel reservoir capable of impounding 202,600 acre-feet of water at its maximum level. Reservoir makeup water is withdrawn intermittently from the adjacent Colorado River. In addition, the Essential Cooling Pond, a 47-acre, below grade, off-channel reservoir that supplies water to cool crucial plant components is capable of impounding 388 acre-feet of water. Various water rights permits, contractual agreements, and compliance documents authorize the South Texas Project to maintain these reservoirs, impound water diverted from the Colorado River, and to circulate, divert, and use water from the reservoirs for industrial purposes to operate the plant. These permits also limit the rate of diversion from the Colorado River. The South Texas Project diverted 10,303 acre-feet from the Colorado River in 2008 for the Main Cooling Reservoir fill operations while preserving adequate freshwater flow conditions for downstream bay and estuarine ecosystems.

The South Texas Project and the Lower Colorado River Authority finalized an amended water rights contract for a secure water supply source to support reliable long-term operation of the station while providing flexibility to the Lower Colorado River Authority for supplying the source water. The agreement also assists the Lower Colorado River Authority to plan its future water supply strategies to help meet water demands identified in the Senate Bill 1 regional water planning process discussed later in this report. Station operations were modified accordingly in 2006 and continue to support the amended agreement and mutually-developed water delivery plan.

Existing federal and state water quality standards are implemented and enforced through the Texas Pollutant Discharge Elimination System (TPDES) permit program to restore and maintain the state's waters. Under this permit program, the South Texas Project monitors, records, and reports the types

2008 Environmental Report

and quantities of pollutants from wastewater discharges to ensure that we meet or exceed the stringent levels set in the permit. A monthly monitoring report is submitted to the Texas Commission on Environmental Quality for wastewater discharges. Reports identifying ground and surface water use are also submitted annually to the Texas Commission on Environmental Quality and Texas Water Development Board. An annual groundwater use report is also submitted to the Coastal Plains Groundwater Conservation District.

Wastewater generated at the South Texas Project is processed and discharged to the onsite Main Cooling Reservoir to be re-used by the station as cooling water for plant systems. No water was discharged from the reservoir in 2008. The station continued its outstanding wastewater discharge compliance performance record in 2008. Aquatic studies, including fish populations and habitat diversity in the Main Cooling Reservoir and the Colorado River, as well as impingement and entrainment studies at the Main Cooling Reservoir Cooling Water Intake Structure, were initiated in 2007 and completed in 2008 to support the license application process for Units 3 and 4. These studies were required by the National Environmental Policy Act to assess the potential environmental impact associated with the addition of the new units. No additional studies were required by the United States Environmental Protection Agency or the State of Texas either by way of station discharge permits or otherwise. Wastewater discharges met state and federal water quality standards demonstrating a 100 percent compliance record for the year while conserving and maximizing efficient water usage at the station.



Photo by: Breck Sacra

In addition to the wastewater discharge permit program, the Federal Clean Water Act, as amended, requires permits for storm water discharges associated with industrial activity. The South Texas Project Storm Water Pollution Prevention Plan ensures that potential pollution sources at the site are evaluated and that appropriate measures are selected and implemented to prevent or control the discharge of pollutants in storm water runoff. This plan is a working document that is revised whenever there is a change in design, construction, operation, or maintenance that has a significant effect on the potential for the discharge of pollutants from the station. The station filed a Notice of Intent for coverage under the Multi-Sector General Permit and the Storm Water Pollution Prevention Plan was modified accordingly in 2006.

Following a severe drought in 1996, the Texas Legislature recognized the need to address a wide range of state water resource management issues. In 1997, the Texas Senate drafted legislation known as Senate Bill 1 to address these issues and to develop a comprehensive state water policy. Towards this end, this legislation required that the Texas Water Development Board create a statewide water plan that emphasizes regional planning. Sixteen planning regions were created, each tasked to prepare a regional plan for the orderly development, management and conservation of water resources. The South

Non-Radiological Environmental Operating Report

Texas Project was chosen to represent the electric generating utility interest for the water-planning region that encompasses the lower Colorado River Basin. Plans subsequently submitted by each planning region were incorporated into a State Water Plan in the year 2001 and again in 2006. However, water resource planning is a continuous process and the Regional and State water plans must be updated every five years. The South Texas Project continues to actively participate

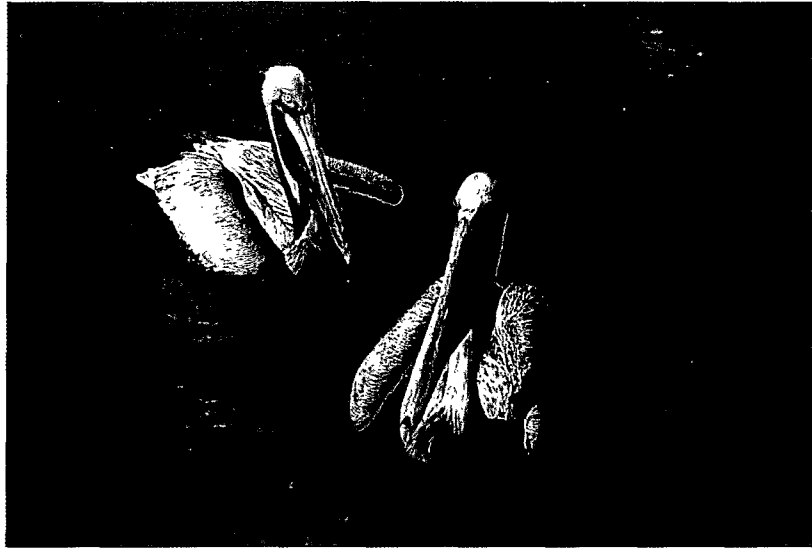


Photo by: Breck Sacra

in the Lower Colorado Regional Water Planning Group to identify strategies to meet future water supply demand projections for the region and update the existing plan accordingly. Additional information regarding regional water planning in Texas can be found on the website maintained by the Texas Water Development Board at <http://www.twdb.state.tx.us/>.

Senate Bill 1 also required groundwater conservation districts to develop groundwater management plans with estimates on the availability of groundwater in the district, details of how the district would manage groundwater, and management goals for the district. The water planning and management provisions were further clarified in 2001 with the enactment of Senate Bill 2. Accordingly, the Coastal Plains Groundwater Conservation District encompassing Matagorda County was confirmed by local election in late 2001. The purpose of the District is to "...manage and protect the groundwater resources of the District." The South Texas Project was actively involved in providing review and comment on the Coastal Plains Groundwater Conservation district rules prior to their initial adoption and continues to participate in the review process associated with proposed rule changes. In 2005, the South Texas Project registered the station's onsite groundwater wells with the District and renewed the operating permit with the District in 2008. The station continues to monitor onsite groundwater usage according to the requirements of the District's rules. Additional information regarding the Coastal Plains Groundwater Conservation District can be found on their website at <http://www.coastalplainsgcd.com/>.

The South Texas Project initially developed, submitted and implemented a station Water Conservation Plan in 1999 in accordance with state water use regulations. The purpose of the station's Water Conservation Plan is to identify and establish principles, practices, and standards to effectively conserve and efficiently use available water supplies and provide historical and projected average industrial water demand. This plan was revised, updated, and re-submitted to the state in 2005.

The South Texas Project personnel understand that the water resources of the state are a critical natural resource requiring careful management and conservation to preserve water quality and availability. Accordingly, the station continues to explore and support efforts focusing on the efficient use of water resources and reduction of water waste.

AIR QUALITY MANAGEMENT

Air emission sources at the South Texas Project fall under the scope of air pollution regulations promulgated under the Texas Clean Air Act and the Federal Clean Air Act and the numerous associated amendments. The purpose of these regulations is to protect air resources from pollution by controlling or abating air pollution and emissions. Regulated emission sources at the South Texas Project include a fossil-fuel boiler, emergency diesel generators, fire-fighting training, and other minor maintenance equipment and activities.

The South Texas Project has one fossil fuel-fired auxiliary steam boiler available to furnish steam for plant use when steam is not available from the nuclear steam supply system. In addition to the auxiliary steam boiler, a number of fossil-fueled diesel generators are located onsite. These diesels are designed to provide emergency power to various plant systems or buildings in the event of a loss of power. This equipment is not normally needed for daily operations and the station does not use it to produce electricity for distribution. Routine maintenance runs are conducted to ensure availability if needed and for equipment maintenance.



Photo by: Paul Travis

Unlike conventional electrical generating stations, nuclear power plants do not burn fossil fuel. Therefore, the South Texas Project produces virtually no greenhouse gases or other air pollutants that are the typical by-products of industrial production processes. The use of emissions-free nuclear power is a significant contributor to the preservation of our community's clean air resources. The South Texas Project uses small amounts of fossil fuel for backup and emergency equipment. The major regulated air emission sources at the South Texas Project include one fossil-fuel boiler and various emergency diesel generators.

Non-Radiological Environmental Operating Report

NON-RADIOACTIVE WASTE MANAGEMENT

Solid waste management procedures for hazardous and non-hazardous wastes generated at the South Texas Project ensure that wastes are properly dispositioned in accordance with applicable federal, state, and local environmental and health regulations. By regulatory definition, solid waste includes solid, semi-solid, liquid, and gaseous waste material. The Texas Commission on Environmental Quality, which administers the Texas Solid Waste Disposal Act and also the federal Resource Conservation and Recovery Act program, is the primary agency regulating non-radioactive wastes generated at the South Texas Project. The Texas Commission on Environmental Quality regulates the collection, handling, storage, and disposal of solid wastes, including hazardous wastes. The transportation of waste materials is regulated by the United States Department of Transportation.

The South Texas Project is classified as a small quantity generator of industrial solid wastes. Texas Commission on Environmental Quality regulations require that industrial solid wastes generated at the South Texas Project be identified to the Commission. These are listed in the Texas Commission on Environmental Quality Notice of Registration for the South Texas Project. The registration is revised whenever there is a change in waste management practices at the site. Waste handling and disposal activities are summarized and documented in a waste summary report for the South Texas Project that is submitted annually to the Texas Commission on Environmental Quality.

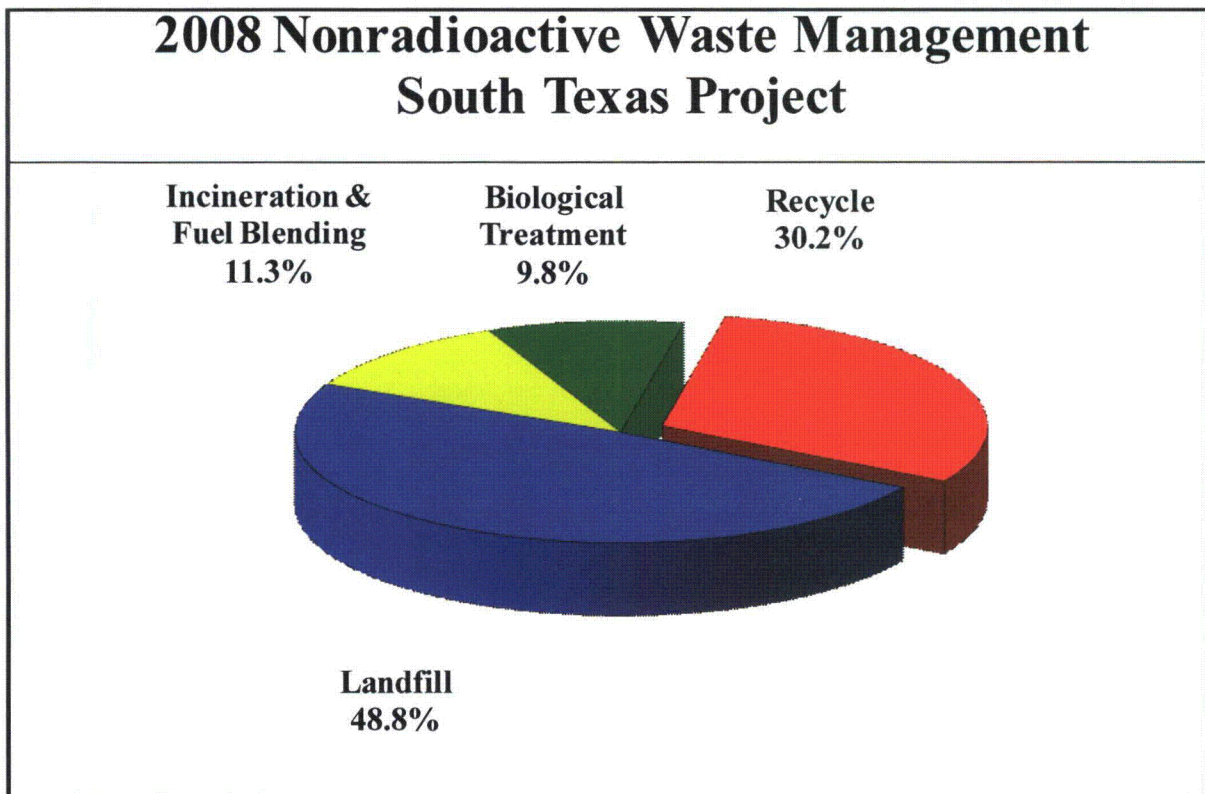


Figure 4-1

2008 Environmental Report

Hazardous waste accumulation at the South Texas Project in 2008 was limited to a maximum holding period of 180 days. The Resource Conservation and Recovery Act and Texas Solid Waste Disposal Act also requires the use of proper storage and shipping containers, labels, manifests, reports, personnel training, a spill control plan, and an accident contingency plan. Plant personnel routinely inspect areas throughout the site to ensure wastes are not stored or accumulated inappropriately.

Station policies and regulations encourage the recycling, recovery, or re-use of waste when possible to reduce the amount of waste generated or disposed of in landfills. Approximately 30 percent of the industrial non-radioactive waste generated in 2008 at the South Texas Project was recycled or processed for re-use. (Reference Figure 4-1) The South Texas Project ships waste oil, grease, electrohydraulic fluid, adhesives, liquid paint, and solvent for fuel blending and thermal energy recovery. Used oil, diesel fuels, and used oil filters are sent to a recycling vendor for re-processing. Lead-acid batteries are returned, when possible, to the original manufacturer for recycling or are shipped to a registered battery recycler, thereby reducing the volume of hazardous waste that might otherwise be generated. Non-hazardous blast grit was also shipped for recycle in 2008. A site paper recycling program results in the collection of several tons of paper each year. In 2008, the station collected approximately 22 tons of paper for recycling. Every ton of paper recycled saves approximately 17 trees, saves 7,000 gallons of water, and saves enough energy to power the average home for six months¹. In addition, approximately 164 tons of scrap metal were also removed from the station for recycle in 2008. The majority of scrap metal was generated from replacement of feedwater tube bundles and covers. The station continues to explore new areas where recycling may be expanded or initiated.

Non-radioactive solid waste that cannot be shipped for recycling is shipped for disposal. Municipal-type trash is transported to an offsite landfill. Successful waste minimization and source reduction efforts by employees have allowed the South Texas Project to remain classified as a small-quantity generator since 2004. Hazardous waste accounts for only a small portion of the waste generated at the South Texas Project; however, minimization and reduction of hazardous waste generation where feasible remains an important goal at the station. (Reference Figures 4-2 and 4-3)

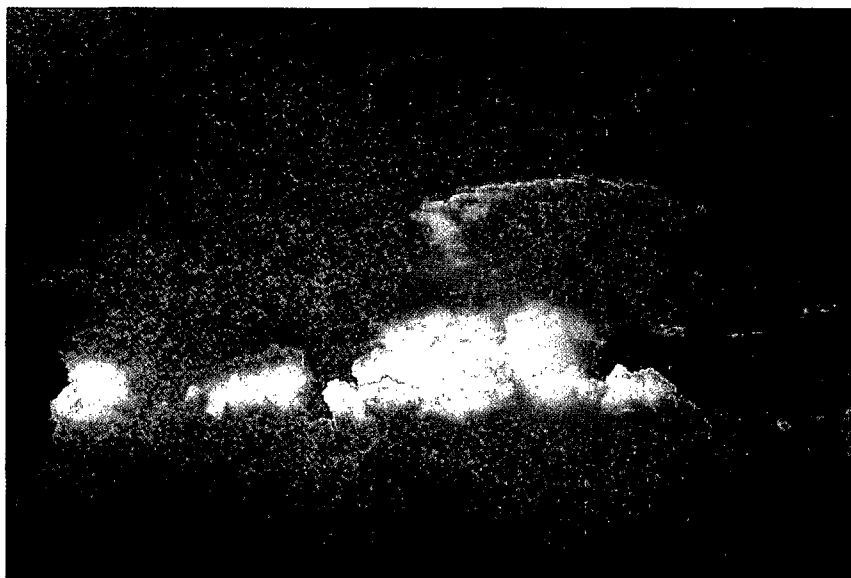


Photo by: Breck Sacra

¹Texas Commission on Environmental Quality. <http://www.takecareoftexas.org/around-the-office/>. February 2009.

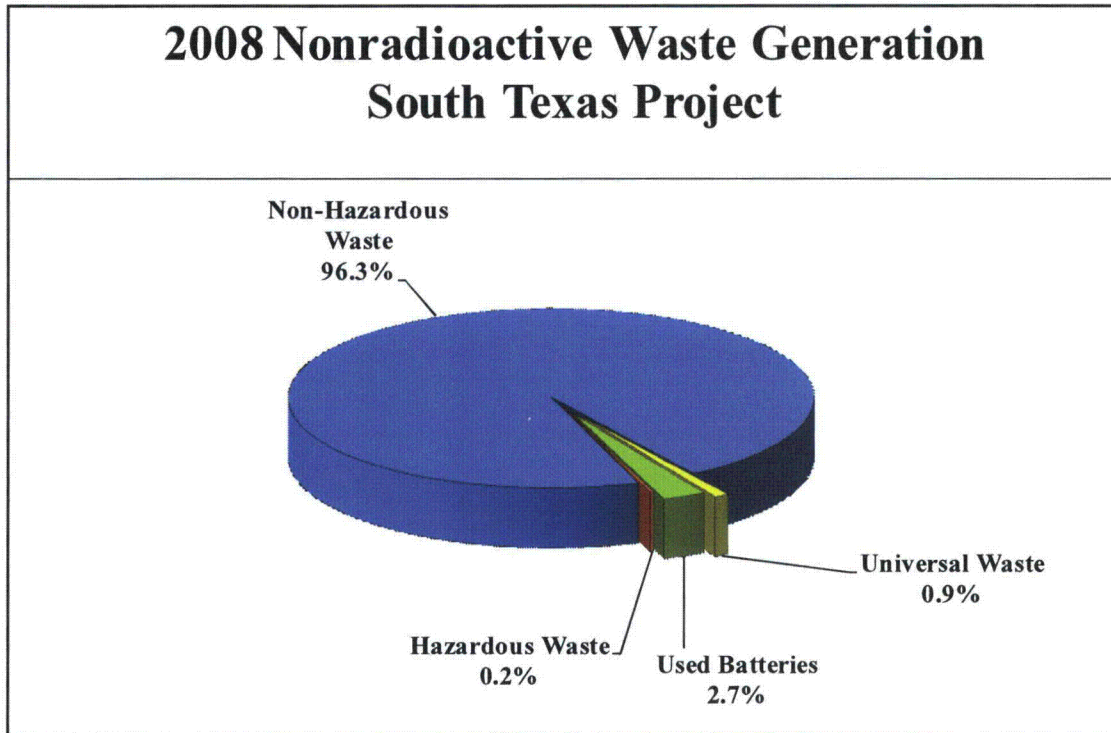


Figure 4-2

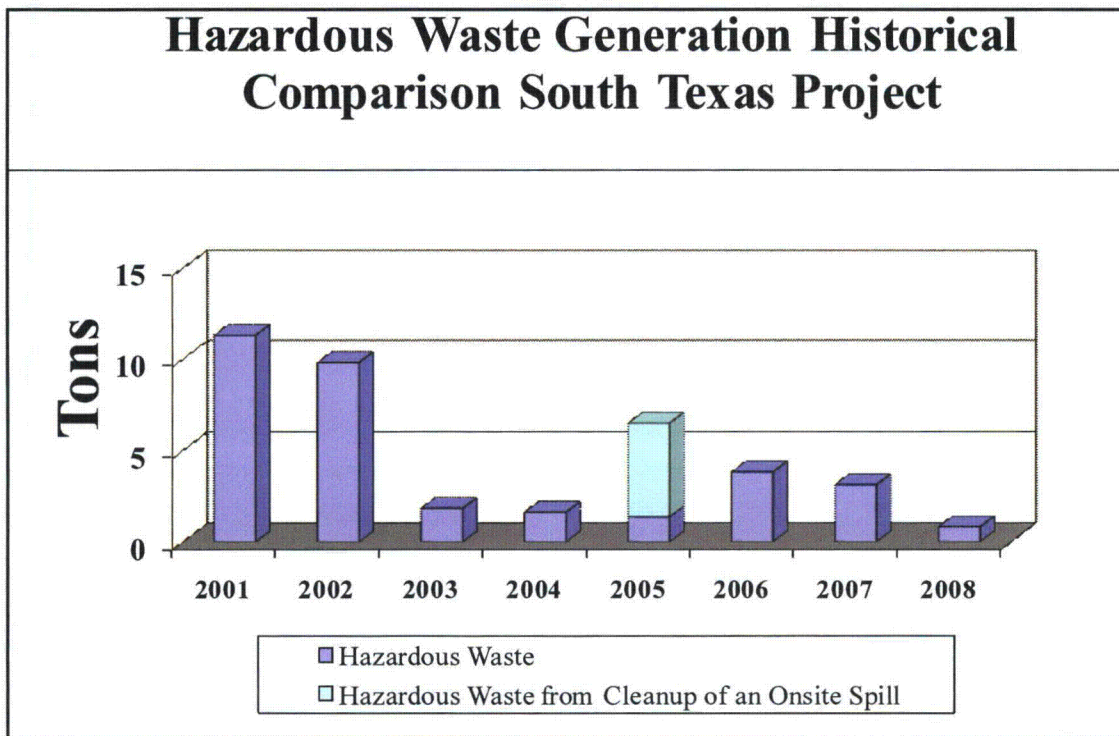


Figure 4-3

2008 Environmental Report

CHEMICAL CONTROL AND MANAGEMENT

The station's *Integrated Spill Contingency Plan for the South Texas Project Electric Generating Station*, updated in 2006, consolidates multiple federal and state requirements into one plan. The plan is implemented through standard site operating procedures and guidelines. The South Texas Project uses standard operating procedures, policies, and programs to minimize the generation of waste materials, control chemical usage, and prevent spills. The South Texas Project also evaluates chemicals and products proposed for use which could come in contact with plant components. Site procedures address the evaluation, storage, use, spill control, and disposal requirements of chemicals. These guidelines assist in reducing waste generation, ensure proper packaging for disposal and mitigate the consequences of inadvertent spillage.

The South Texas Project emphasizes awareness training for spill prevention and maintains station readiness to respond should a spill occur. Spill response team members receive annual refresher training in hazardous material incident response. No significant or consequential spills occurred in 2008.



Photo by: Gary Parkey

Non-Radiological Environmental Operating Report

ENVIRONMENTAL PROTECTION PLAN STATUS

The South Texas Project's Environmental Protection Plan was issued in March of 1989 to provide for the protection of non-radiological environmental values during operation of the South Texas Project. This report reviews Environmental Protection Plan non-compliances identified by the plant in 2008 and the associated corrective actions taken to prevent their recurrence. Potential nonconformities are promptly addressed, as identified, to maintain operations in an environmentally acceptable manner. The station uses its Corrective Action Program to document these conditions and track corrective actions to completion. Internal assessments, reviews and inspections are also used to document plant compliance.

This report also reviews non-routine reports submitted by plant personnel and any activities that involved a potentially significant unreviewed environmental question. A proposed change, test or experiment is considered to present an unreviewed environmental questions if it concerns:

- 1) A matter that may result in a significant increase in any adverse environmental impact previously evaluated in the Final Environmental Statement related to the Operation of South Texas Project, Units 1 and 2 (Docket Nos. 50-498 and 50-499), environmental impact appraisals, or in any decisions of the Atomic Safety and Licensing Board; or,
- 2) A significant change in effluents or power level; or,
- 3) A matter not previously reviewed and evaluated in the documents specified in (1) above, that may have a significant adverse environmental impact.

No unreviewed environmental questions were identified in 2008.

Events that require reports to federal, state or local agencies other than the Nuclear Regulatory Commission are reported in accordance with the applicable reporting requirements. The Nuclear Regulatory Commission is provided with a copy of any such report at the time it is submitted to the cognizant agency. If a non-routine event occurs and a report is not required by another agency, then a 30-day report to the Nuclear Regulatory Commission is required by the Environmental Protection Plan. No such 30-day or other non-routine report of this type was required in 2008.



Photo by: Paul Travis

Radiological Environmental Introduction and Summary

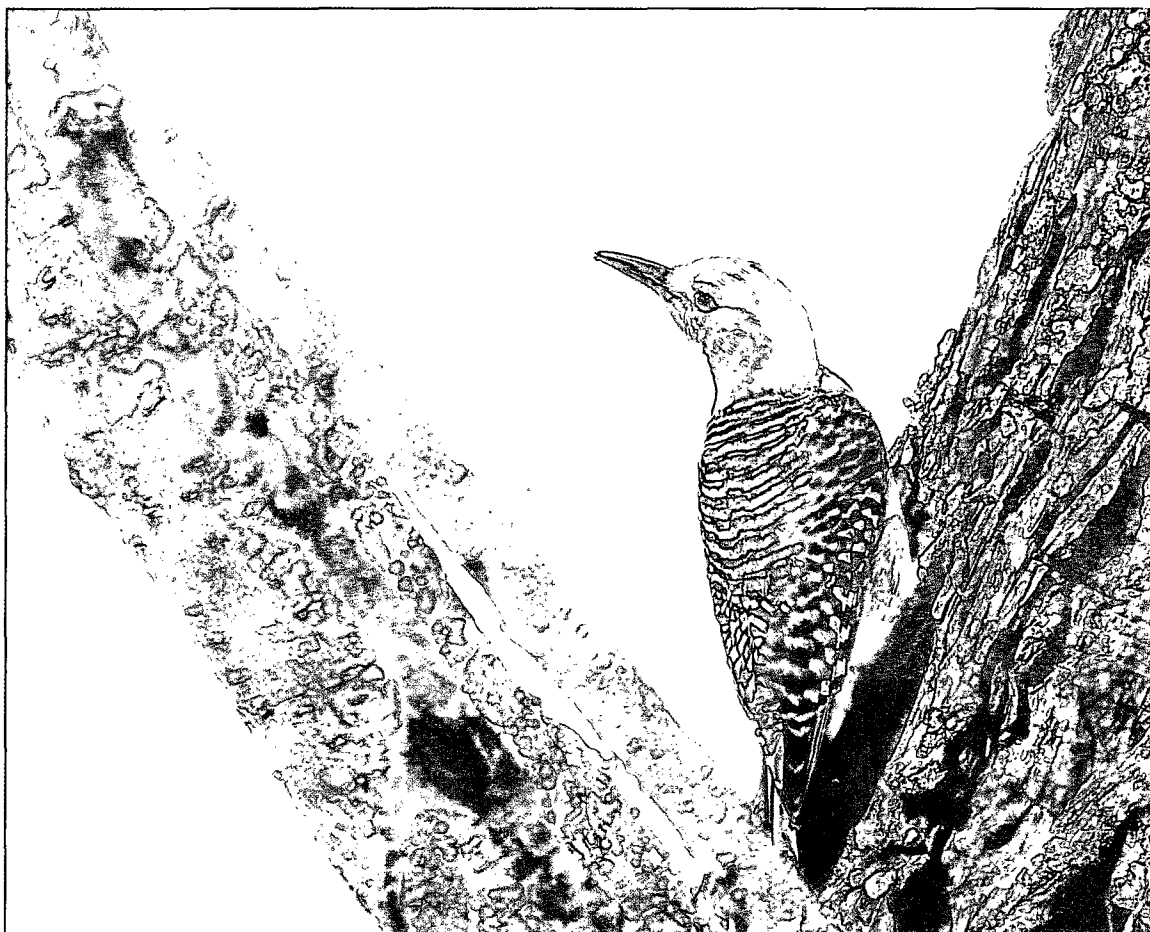


Photo by: Gary Parkey

Chapter 5

Radiological Environmental Introduction and Summary

The Radiological Environmental Monitoring Program is designed to evaluate the radiological impact of the South Texas Project on the environment by collecting and analyzing samples for low levels of radioactivity. Measurements of samples from the different pathways indicate that there is no detectable effect offsite from the operation of the power plants.

Only natural radioactive material has been identified in air samples in 2008. The measurements of direct radiation onsite and offsite indicate no effect from the power plants. Samples of fish and meat collected and analyzed show no plant related isotopes are present.

Water samples from the onsite drinking water supply from the deep aquifer and offsite sampling stations on the Colorado River show only natural background radioactivity.

Tritium is a radioactive isotope of hydrogen that is produced in the reactor and cannot be removed from effluents released to the Main Cooling Reservoir because it is a part of the water molecule. During the design of the plant this was recognized, and the presence of tritium in the Main Cooling Reservoir,

various sloughs and ditches onsite, and the shallow aquifer were expected. Tritium has been detected in these types of samples, and the concentrations remain below the Environmental Protection Agency (EPA) drinking water limits.

In 2005, several nuclear plants discovered tritium in groundwater on site at levels exceeding the EPA drinking water limits, mainly near underground process or effluent pipes. To determine if this were the case at the South Texas Project, test wells near underground process and effluent pipes were sampled and analyzed for tritium. Although some results were positive, all results were below the EPA drinking

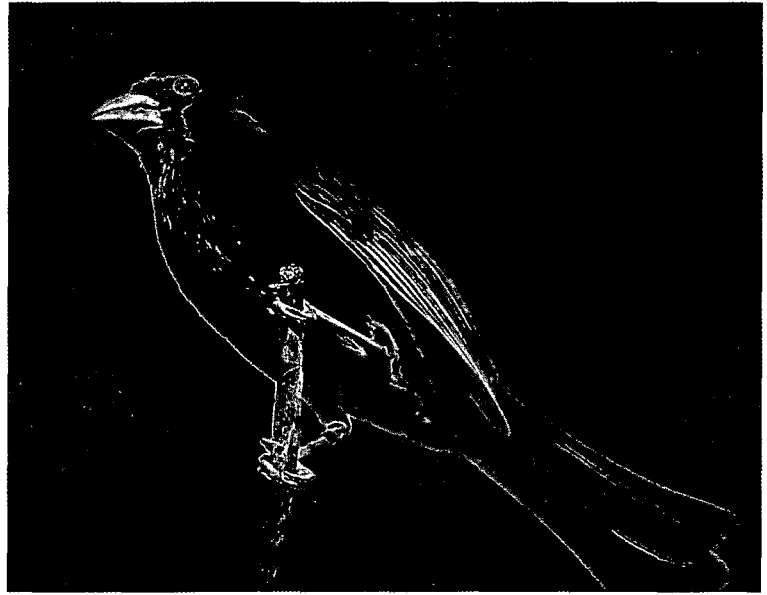


Photo by: Gary Parkey



Photo by: Paul Travis

2008 Environmental Report



Photo by: Gary Parkey

water limits. The current sampling program samples two of these wells quarterly and seven annually. The tritium concentration has decreased in the well that has the highest concentration during 2008. The other wells' tritium concentrations have remained constant.

Additional onsite shallow aquifer wells have been added to the sampling schedule to monitor the expected migration of tritium from the Main Cooling Reservoir (MCR). The additional wells are on all sides of the MCR. Two wells, near the site boundary on the west side of the MCR, were positive for tritium, and those results were well below the EPA drinking water limit. Two additional wells were installed to monitor the movement of the tritium; one of them was positive but at a very low level. Based on these monitoring results, there is no risk to the health and safety of the public.

Analysis of the data collected from the implementation of the Radiological Environmental Monitoring Program indicates that the operation of the South Texas Project has no offsite radiological impact.

Radiological Environmental Introduction and Summary

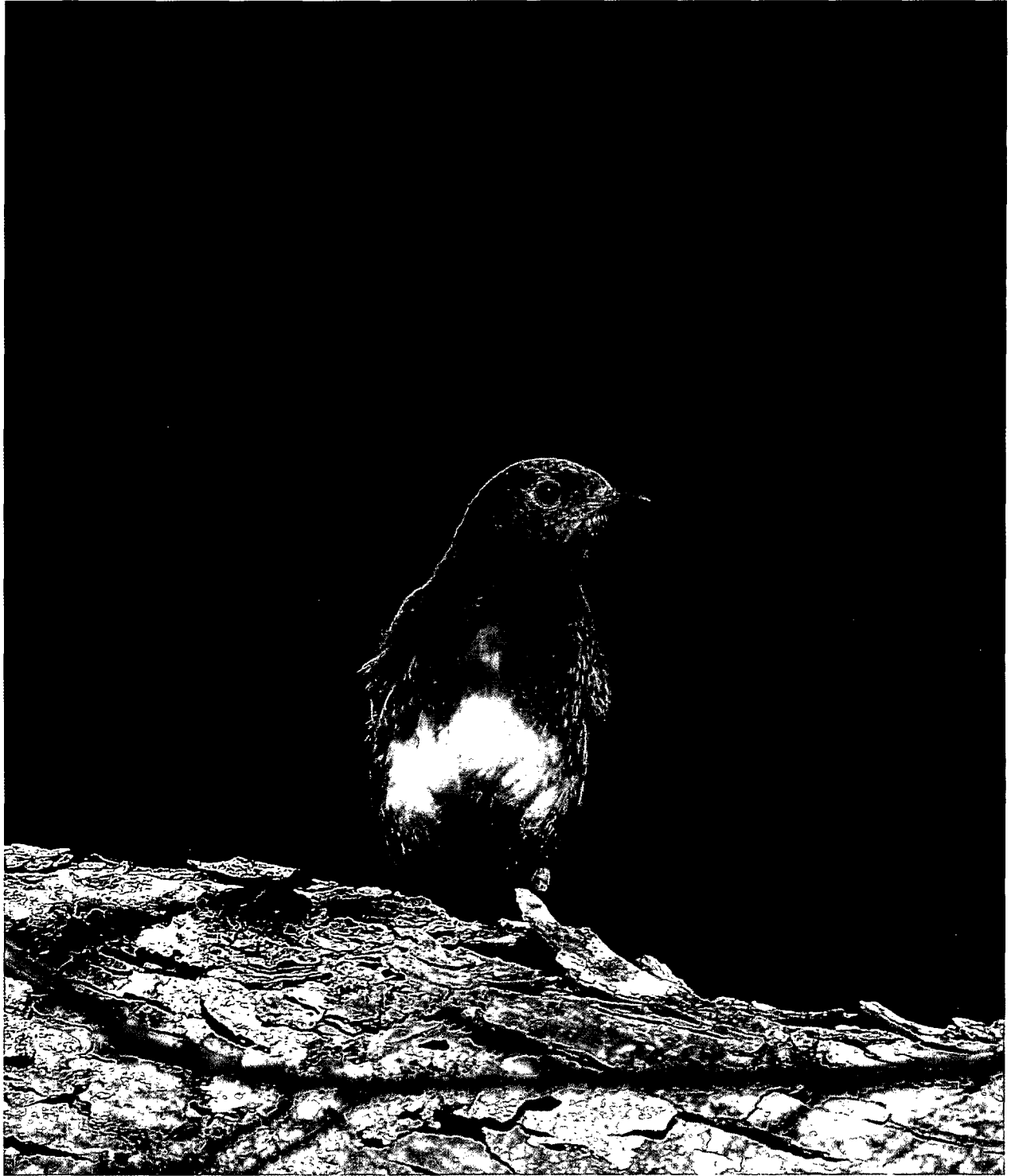


Photo by: Gary Parkey

Radiological Environmental Operating Report

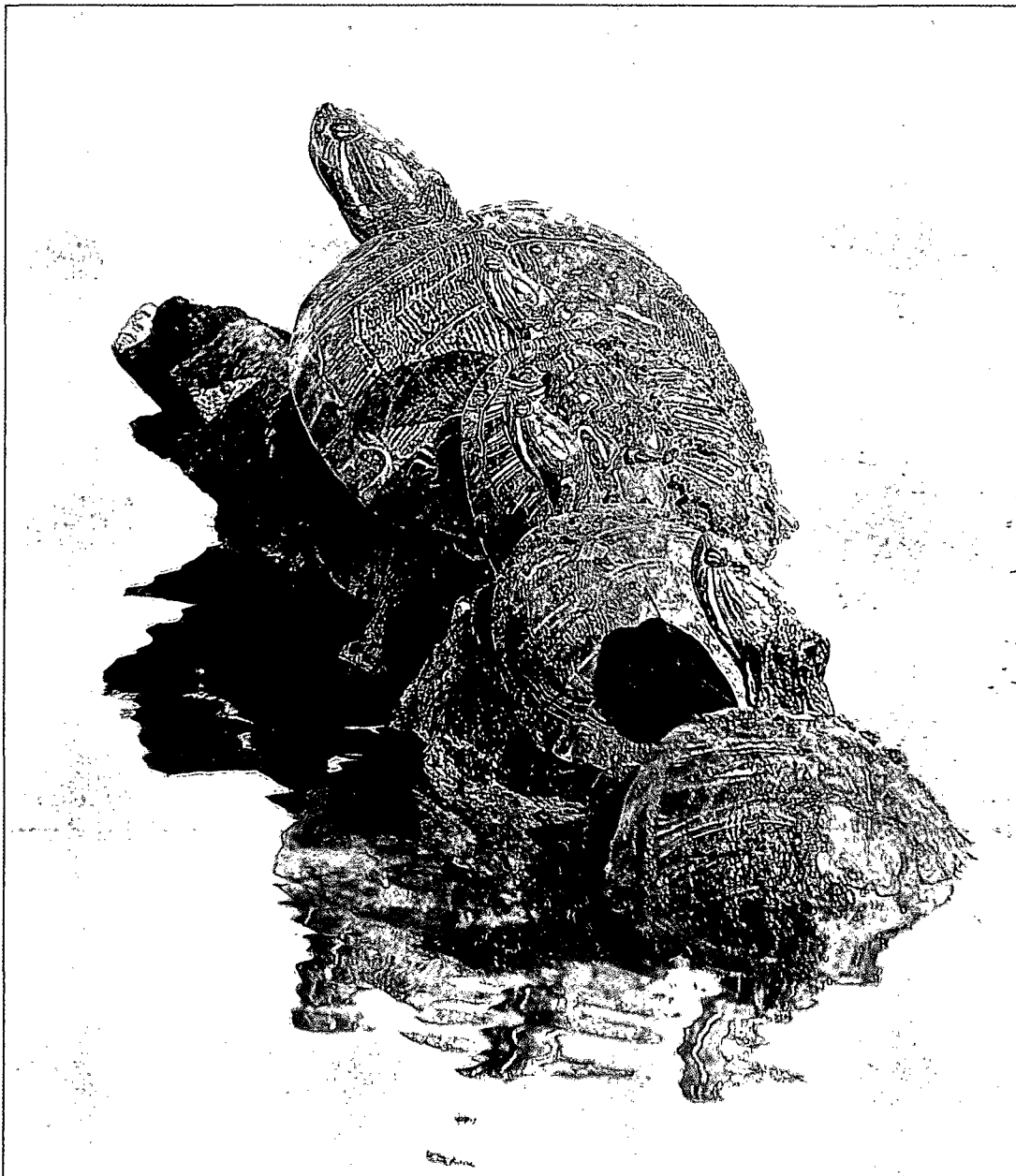


Photo By: Gwenna Kelton

Chapter 6

Radiological Environmental Operating Report

PROGRAM DESCRIPTION

The South Texas Project initiated a comprehensive pre-operational Radiological Environmental Monitoring Program in July 1985. That program terminated on March 7, 1988, when the operational program was implemented. The pre-operational monitoring program data forms the baseline against which operational changes are measured.

Critical pathway analysis requires that samples be taken from water, air, and land environments. These samples are obtained to evaluate potential radiation exposure. Sample types are based on established pathways and experience gained at other nuclear facilities. Sample locations were determined after considering site meteorology, Colorado River hydrology, local demography, and land use. Sampling locations are further evaluated and modified according to field and analysis experience. Table 1 at the end of this section lists the minimum sampling locations and frequency of collection.

Sampling locations consist of indicator and control stations. Indicator stations are locations on or off the site that may be influenced by plant discharges during plant operation. Control stations are located beyond the measurable influence of the South Texas Project or any other nuclear facility. Although most samples analyzed are accompanied by a control sample, it should be noted that this practice is not always possible or meaningful with all sample types. Fluctuations in the concentration of radionuclides and direct radiation exposure at indicator stations are evaluated in relation to historical data and against the control stations. Indicator stations are compared with characteristics identified during the pre-operational program to monitor for radiological effects from plant operation.

Several sample identification methods are used to implement the program. Figures 6-1 and 6-2 are maps that identify permanent sample stations. Descriptions of sample stations shown on Figure 6-1 and 6-2 are found in Table 2. Table 2 also includes additional sampling locations and media types that may be used for additional information. Figure 6-3 illustrates the zones used when collection locations are not permanent sample stations.

NEI GROUNDWATER PROTECTION INITIATIVE

During 2006, the Nuclear Energy Institute sponsored a task force to establish consistent methods and approaches to the monitoring and reporting of information about radioactive isotopes in groundwater, the resulting program is called the NEI Groundwater Protection Initiative. In 2006 the South Texas Project participated in the task force and has implemented the recommendations from NEI 07-07 "Industry Ground Water Protection Initiative" and other industry guidance.

During 2005 several shallow aquifer wells were sampled within the immediate plant grounds and had positive values that were below the EPA drinking water limit of 20,000 pCi/kg. The positive results were attributed to an underground pipe that leaked and was repaired several years ago. To monitor this tritium, several shallow aquifer test wells were added to the sampling schedule inside the protected area, the area enclosed within the security fence, during 2008. Two of the wells, between the two units, were positive and have been sampled quarterly. The concentration of one well has remained fairly constant at approximately 1,250 pCi/kg and the other has decreased from approximately 15,000 to 6,600 pCi/kg. Three wells that had no detectable tritium are sampled annually to determine if there is movement of

2008 Environmental Report

Designated Sample Locations



Figure 6-1

Radiological Environmental Operating Report

REMP ON SITE LOCATIONS

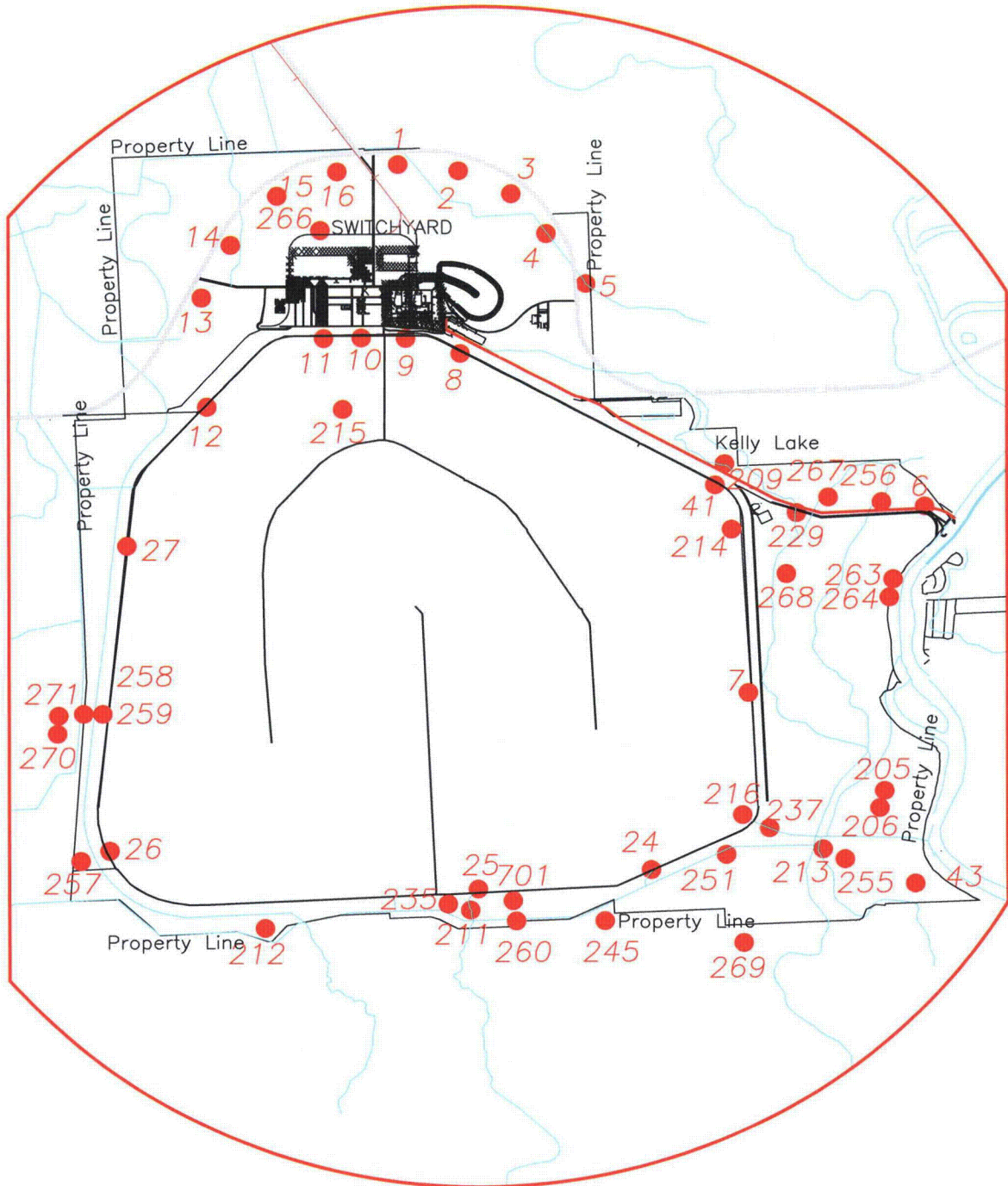


Figure 6-2

2008 Environmental Report

ZONE LOCATION MAP



The zone station number is determined in the following manner:

- *The first character of the station number "Z" to identify it as a zone station.
- *The second character is the direction coordinate numbers 1-8.
- *The third character is the distance from the site number 1-6.

Figure 6-3

Radiological Environmental Operating Report

the tritium in the protected area. These three wells continue to have no detectable tritium. During 2008, three additional wells were installed in the protected area near Unit 1 on the east side. This was suggested during a hydrology study due to the direction of flow of the shallow aquifer and the lack of appropriate wells to sample on the east side of the plants. The samples collected from these wells contained no detectable tritium.

As discussed in previous reports, the tritium has been monitored in the shallow aquifer for several years on the south side of the Main Cooling Reservoir. This was predicted by models used when licensing the site, and validated with additional studies for Units 3 & 4. A site conceptual model developed in 2008 to implement the Groundwater Protection Initiative validated the original predictions of the site hydrology. The models predicted that the tritium would be at the highest concentration in the shallow aquifer on the southeast side of the Main Cooling Reservoir. This prediction has shown to be true with the positive results from station #251 and station #235 which have been sampled for several years and is discussed later in this report. To enhance the database, shallow aquifer wells onsite were added to the environmental program in 2007. Station #259 and #258, on the west side of the Main Cooling Reservoir, are the only wells added that had detectable tritium, and the concentrations were very low (200 to 600 pCi/kg). In the last quarter of 2008 two additional wells, #270 and #271 were installed west of the fence line near #258 and #259. Well #270 is in the lower shallow aquifer, and was also at a very low concentration of approximately 500 pCi/kilogram. Well #271 in the upper shallow aquifer was below measurable concentrations. This data indicates that the model used during the licensing phase appears to predict the movement of tritium in the shallow aquifer correctly.

During 2008, there were two occurrences of water leaking onto the ground. One was from a small pipe break. The second was from a resin box overflow. These leaks were promptly identified, stopped and evaluated under site programs and procedures. Information is recorded in the Corrective Action Program database. The evaluations revealed that there was no release to an unidentified pathway, no radioactive material was released offsite, and there was no impact to drinking water or the health and safety of the public.

ANALYSIS OF RESULTS AND TRENDS

Environmental samples from areas surrounding the South Texas Project continue to indicate no significant radiological effects from plant operation. Analytical values from offsite indicator sample stations continue to trend with the control stations. Onsite indicator samples continued to increase or decrease in measured values at their expected rates.

Average quarterly beta activity from three onsite indicator stations and a single control station for air particulate samples have been compared historically from 1988 through 2008 (see Figure 6-4). The average of the onsite indicators trends closely with the offsite control values. The comparison illustrates that plant operations are not having an impact on air particulate activity even at the Sensitive Indicator Stations (#1, #15, and #16). These stations are located near the plant downwind from the plant, based on the prevailing wind direction. The beta activity measured in the air particulate samples is from natural radioactive material. Gamma analysis is performed on quarterly composites of the air particulate samples to determine if any activity is from the South Texas Project. The gamma analysis revealed that it was all natural radioactivity.

2008 Environmental Report

Direct gamma radiation is monitored in the environment by thermoluminescent dosimeters located at 40 sites. The natural direct gamma radiation varies according to location because of differences in the natural radioactive materials in the soil, its moisture content, and the vegetation cover. Figure 6-5 compares the amount of direct gamma radiation measured at the plant since the fourth quarter of 1985 for three different types of stations. The Control Stations are greater than 10 miles from the site and are in the direction of the least prevailing winds (Stations #23 and #37). The Sensitive Indicator Stations are in the directions that the wind blows most often and are one mile from the power plants on Farm-to-

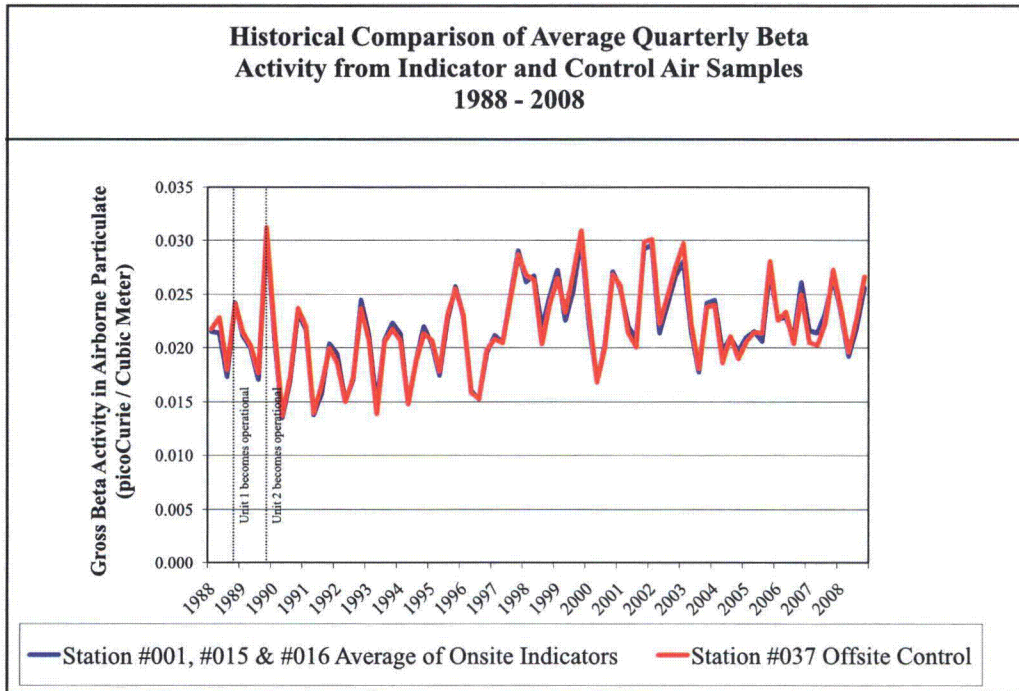


Figure 6-4

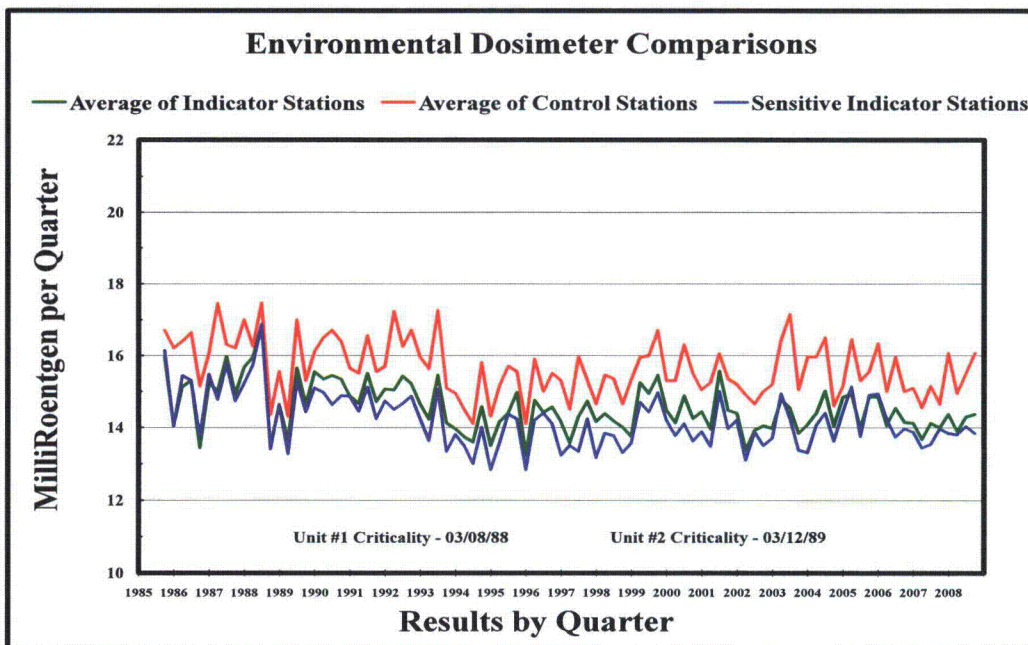


Figure 6-5

Radiological Environmental Operating Report

Market Road 521 (Stations #1, #15 and #16). The Indicator Stations are the remainder of the stations excluding Stations #38, 40, and 42. The values plotted are the averages for all of the stations according to type. Figure 6-5 indicates changing conditions in the area of the individual stations. The average of the Control Stations is higher than the other stations because station #23 is in an area that has a slightly higher natural background radiation, probably due to the soil composition. The trends of Figure 6-5

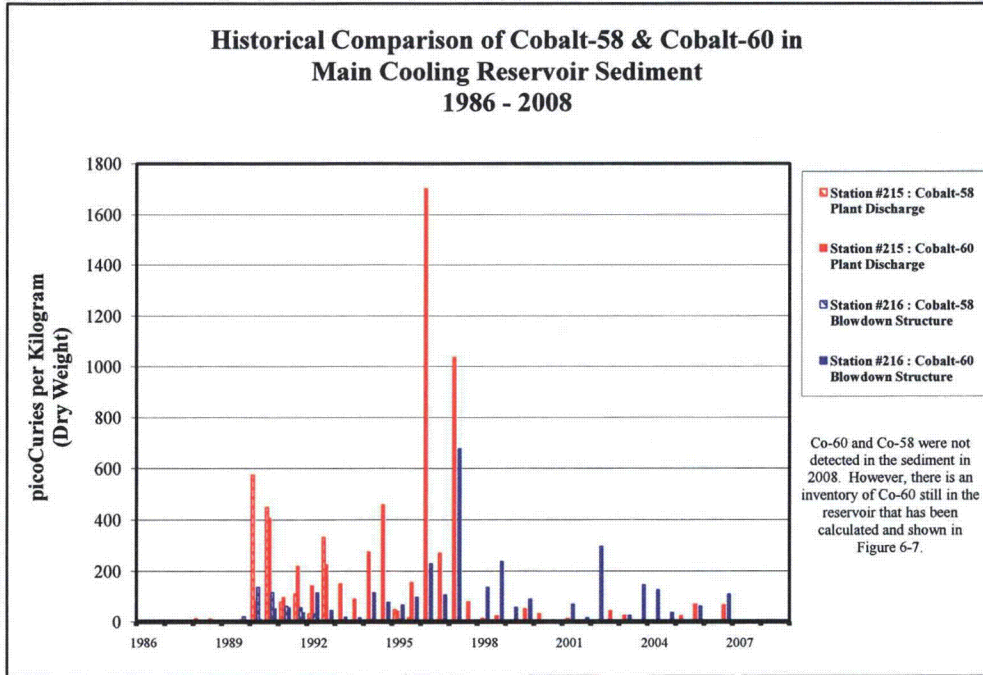


Figure 6-6

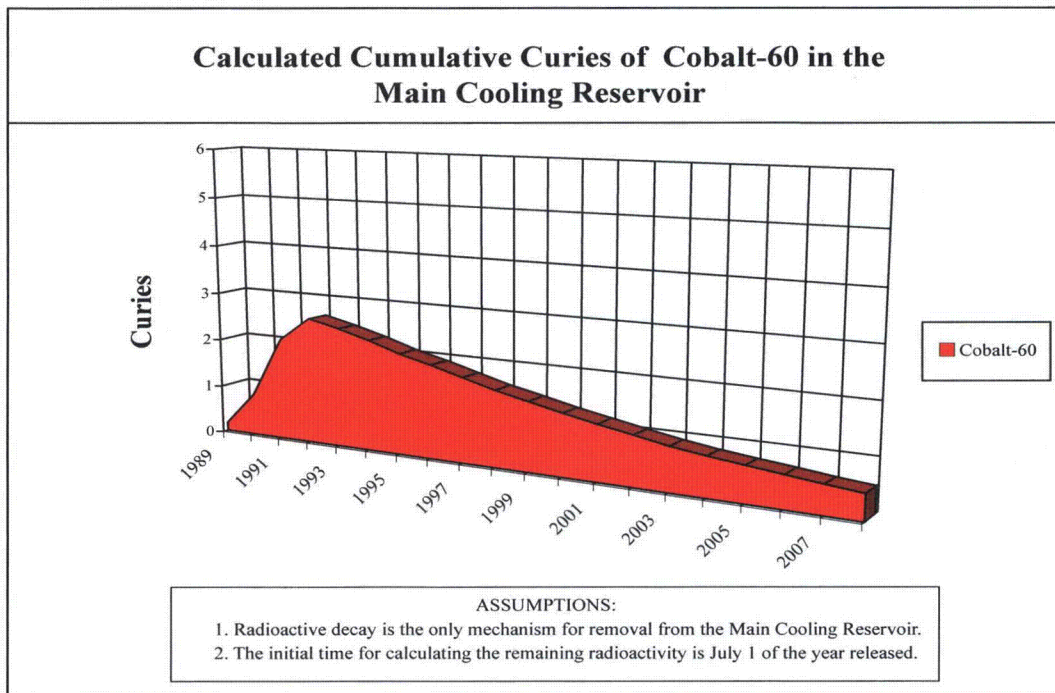


Figure 6-7

2008 Environmental Report

clearly show that the power plants are not adding to the direct radiation in the environment.

Bottom sediment samples are taken from the Main Cooling Reservoir each year. Figure 6-6 shows the positive results from two plant-produced radioactive materials, Cobalt-58 and Cobalt-60. The Cobalt-58 and Cobalt-60 inventory in the reservoir has decreased since 1992 because of equipment installed to reduce radioactive effluents. The amount of Cobalt-58 has decreased below levels that can be reliably detected. In 2008, Cobalt-60 could not be detected in the reservoir bottom sediment samples. Figure 6-7 demonstrates the decline in the total amount of Cobalt-60 in the reservoir.

Cesium-137 was measured in one of the Main Cooling Reservoir bottom sediment samples. However, Cesium-137 was present in the environment before the operation of the South Texas Project, and the sample concentrations were approximately equal to pre-operational values. The Cesium-137 measured in the Main Cooling Reservoir does not suggest an increase due to plant operation.

Tritium is a radioactive isotope of hydrogen and is produced during plant operation. Tritium produced in the reactors is a part of the water molecule. Wastewater is treated to remove impurities before release, but tritium cannot be removed because it is chemically part of the water molecule. Some of the tritium is released into the atmosphere, and the remainder is released into the Main Cooling Reservoir. The

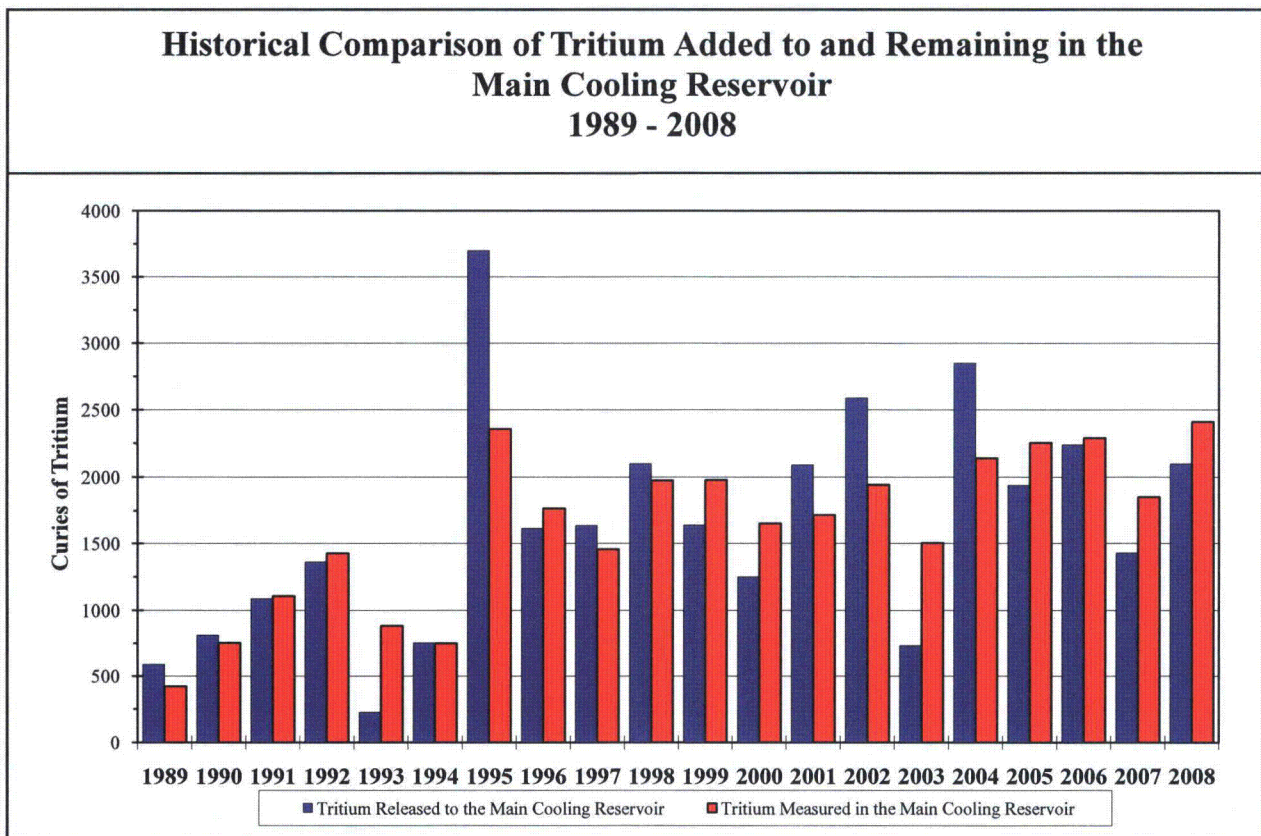


Figure 6-8

Radiological Environmental Operating Report

tritium escapes from the Main Cooling Reservoir by evaporation, movement into the shallow aquifer, and by percolation from the relief wells that are a part of the dike's stabilization system. Figure 6-8 shows the amount of tritium released to the Main Cooling Reservoir each year and the amount present during the last quarter of each year. This indicates that almost half of the tritium is removed from the reservoir annually. Rainwater was collected and analyzed during 2008 to determine if the tritium remained in the local area. Tritium was not found in any rainwater samples.

The concentration of tritium in the Main Cooling Reservoir increased in 2008, probably due to the limited rainfall and minimal makeup from the river in 2008, which normally dilutes the concentration of tritium in the Main Cooling Reservoir and the shallow aquifer surrounding it. This effect of the reduced rainfall has induced higher concentrations in the shallow aquifer wells and surface waters across the site.

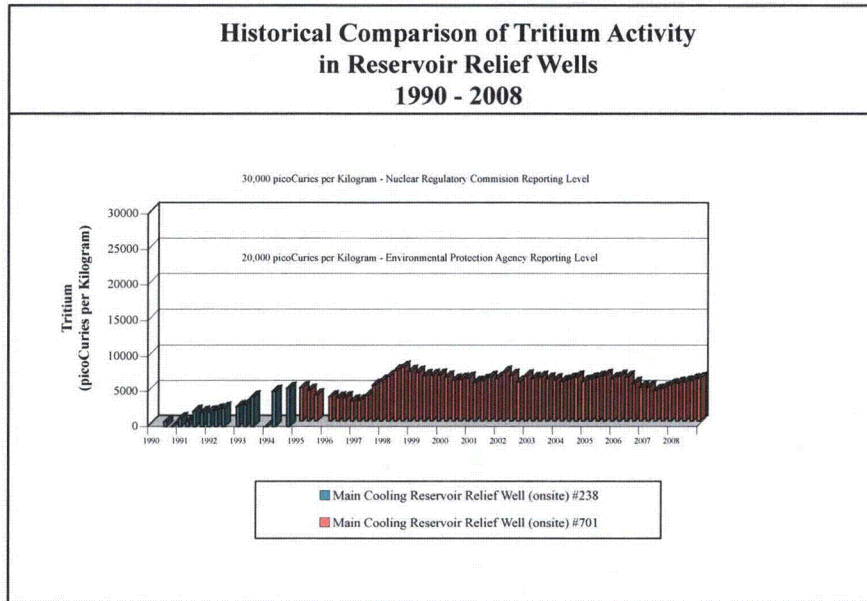


Figure 6-9

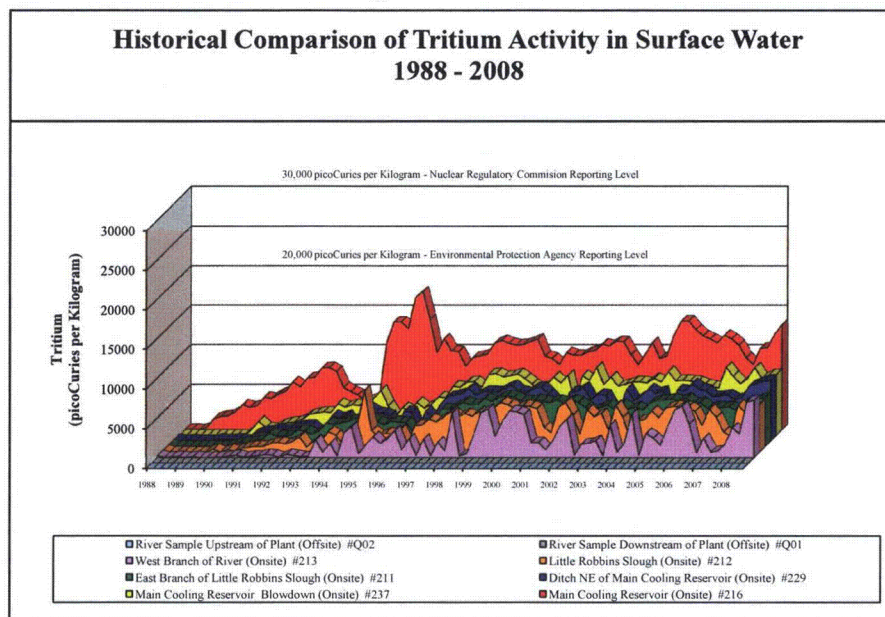


Figure 6-10

2008 Environmental Report

Slightly increased tritium released from the plant to the Main Cooling Reservoir may have also contributed. Tritium enters the sloughs and ditches of the site as runoff from the relief wells that surround the reservoir. Examples of tritium in the relief wells are shown in Figure 6-9. Relief well #238 was sampled until a more dependable relief well #701 was identified. The tritium concentration in eight surface water sample points for 1988 through 2008 is shown in Figure 6-10. The specific sample point locations can be found in Table 2. Tritium levels in the onsite sloughs and ditches vary due to the concentration in the reservoir and the amount of rainfall received. The average tritium concentration in the sloughs and ditches should never equal that of the reservoir because it decays as it migrates through the dike relief well system and is also diluted by rainwater.

Tritium was identified in the shallow (ten to thirty feet deep) aquifer test well #235, approximately seventy-five yards south of the reservoir dike base during 1999. In 2008, the concentration of well #235 has remained fairly constant. Figure 6-11 indicates that the tritium concentration is increased but bounded by previous values measured in 2001. In 2008, samples were collected from the shallow aquifer well #251 southeast of the Main Cooling Reservoir. Samples have been collected quarterly and the tritium levels have remained near that of the relief wells. The results of the analysis from these two shallow aquifer wells are shown in Figure 6-11. Wells #258 and #259 on the west side of the site have been sampled since 2006. Wells #270 and #271 were installed during the last quarter of 2008. The results are shown in Figure 6-12. The concentrations are consistent with the original model for the site and confirm there is no negative impact to the health and safety of the public or the environment.

The drinking water onsite is pumped from deep aquifer wells and is tested quarterly to verify tritium is not present. Water from the reservoir and other surface water onsite is not used as drinking water. The

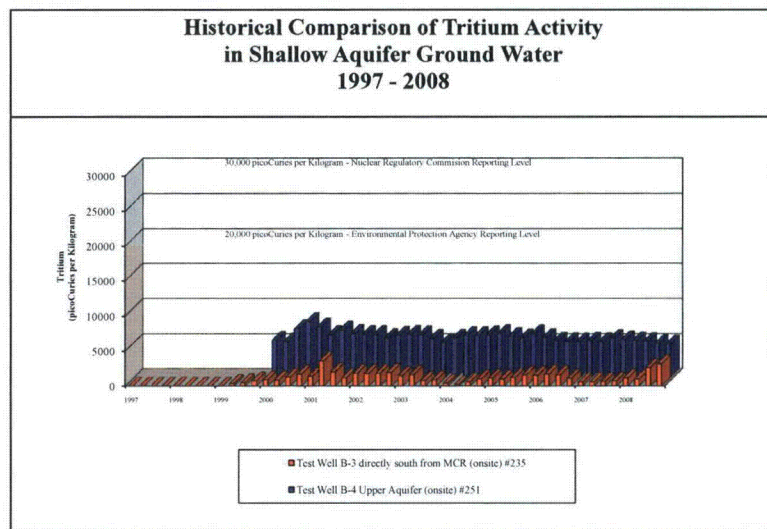


Figure 6-11

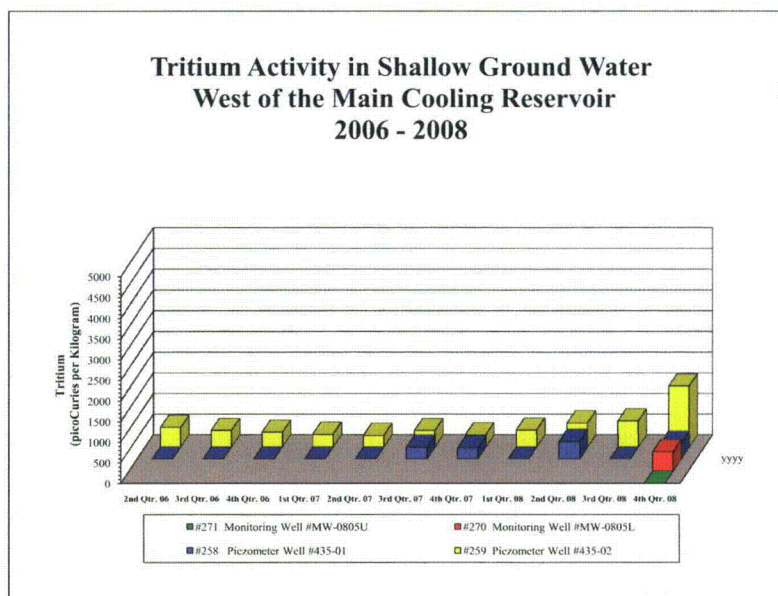


Figure 6-12

Radiological Environmental Operating Report

maximum dose that any individual can receive from tritium in surface water is less than one millirem in a year. This is insignificant compared to the approximate 620 mrem the public receives a year from natural radioactivity in the environment and the radiation received from medical procedures. The current reservoir concentration is less than half the reporting level.

In preparation for the construction of Units 3 & 4, approximately 20 geological test wells were installed within 200 yards of the reservoir dike on the north side. These wells were sampled as they were installed and approximately half had very low levels of tritium at a fraction of the concentration of the reservoir. This was expected because of their close proximity to the Main Cooling Reservoir.

Some samples are collected and analyzed in addition to those required by our licensing documents or internal procedures. These samples are obtained to give additional assurance that the public and the environment are protected from any adverse effects from the plant. These samples include pasture grass, sediment samples, rain water, shallow aquifer well water, water from various ditches and sloughs onsite, and air samples near communities or other areas of interest. The results of these analyses indicate that there is no detectable radiological effect on the environment by plant operation.

LAND USE CENSUS

The Annual Land Use Census is performed to determine if any changes have occurred in the location of residents and the use of the land within five miles of the South Texas Project generating units. The information is used to determine whether any changes are needed in the Radiological Environmental

<u>Sector</u>	<u>Distance</u> (approx miles)	<u>Location</u>
ENE	4.5	CR 232 (Ryman Road)
ESE	3.5	Selkirk Island
SE	3.5	Selkirk Island
SW	4.5	CR 386 (Corporon Road)
WSW	2.5	FM 521
W	4.5	FM 1095
WNW	4.5	CR 356 (Ashby-Buckeye Road)
NW	4.5	CR 354 (Mondrik Road)
NNW	3.5	Runnells Ranch (FM 1468)
N	3.5	Runnells Ranch (FM 1468)

Monitoring Program. The census is performed by contacting area residents and local government agencies that provide the information. The results of the survey indicated that no changes were required.

In addition, a survey is performed to verify the nearest residents within five miles of the South Texas Project generating units in each of 16 sectors. The ten sectors that have residents within five miles and the distance to the nearest residence in each sector are listed above.

2008 Environmental Report

The following items of interest were noted during the census:

Colorado River water from below the Bay City Dam has not been used to irrigate crops.

There were no identified commercial vegetable farms located within the five mile zone.

No commercial dairy operates within Matagorda County, and there is no source of milk within the five mile zone.

Two commercial fish farms continue to operate. One is two miles west of the plant near FM 521, and the second is five miles southwest of the plant at the intersection of Robbins Slough Road and South Citrus Road. The water supply for the ponds is not affected by the operations of the STP power plants.

Broadleaf vegetation sampling is performed at the site boundary in the three most leeward sectors and at a control location in lieu of a garden census. The broadleaf vegetation samples taken also satisfy the collection requirement when milk samples are not available.

QUALITY ASSURANCE

Quality assurance encompasses planned and systematic actions to ensure that an item or facility will perform satisfactorily. Reviews, surveillance and audits have determined that the programs, procedures and personnel are adequate and perform satisfactorily.

Quality audits and independent technical reviews help to determine areas that need attention and re-evaluation. Areas that need attention are addressed in accordance with the station's Corrective Action Program.

The measurement capabilities of the Radiological Laboratory are demonstrated by participating in inter-laboratory measurement assurance programs. These programs provide samples that are similar in matrix and size to those measured for the Radiological Environmental Monitoring Program.

Figure 6-13 summarizes the results of these inter-comparison programs.

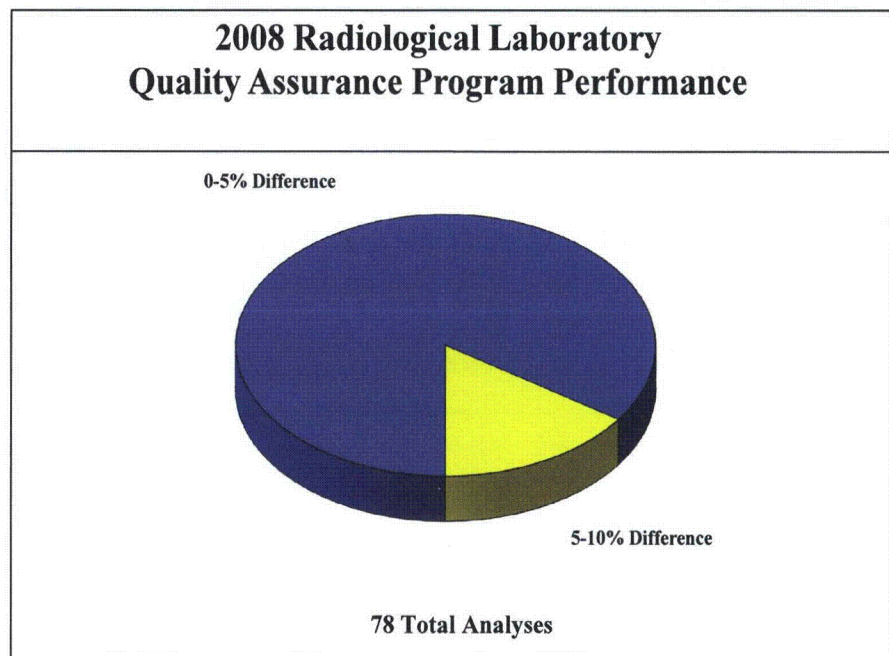


Figure 6-13

Radiological Environmental Operating Report

In addition, approximately ten percent of the analyses made are quality control samples that consist of duplicate, split and blind samples.

Radiochemical measurements must meet sensitivity requirements at the Lower Level of Detection for environmental samples and any deviation is discussed below.

PROGRAM DEVIATIONS

Deviations from the sampling program must be acknowledged and explained in this report. During 2008 the following samples were not collected or were unacceptable for analysis:

- ★ One measurement of direct radiation out of one hundred and sixty required was missed due to the TLD station being located near a fence line that was cleaned by mechanical means which caused the TLDs to be lost.
- ★ Six out of thirty-six required broadleaf vegetation samples were not collected due to seasonal unavailability in January and February.
- ★ Four out of two hundred and sixty air samples were not continuously collected for the full time interval due to power failures.
- ★ One out of four shoreline sediment samples could not be collected due to unavailability of sampling equipment.
- ★ One out of two bottom sediment samples could not be collected due to unavailability of sampling equipment.

The minimum Radiological Environmental Monitoring Program is presented in Table 1. The table is organized by exposure pathway. Specific requirements like location, sampling method, collection frequency, and analyses are given for each pathway.



Photo By: Virgil Fox

2008 Environmental Report

TABLE 1
RADIOLOGICAL ENVIRONMENTAL MONITORING PROGRAM

EXPOSURE: DIRECT RADIATION

40 TOTAL SAMPLING STATIONS

Sample Media, Number, Approximate Location and Distance of Sample Stations from Containment.	Routine Sampling Mode	Sampling and Collection Frequency	Analysis Type	Minimum Analysis Frequency
<p>Exposure Media: TLD</p> <p>16- Located in all 16 meteorological sectors, 0.2* to 4 miles.</p> <p>16- Located in all 16 meteorological sectors, 2 to 7 miles.</p> <p>6- Located in special interest areas (e.g. school, population centers), within 14 miles.</p> <p>2- Control stations located in areas of minimal wind direction (WSW,ENE), 10-16 miles.</p>	Continuously	Quarterly	Gamma dose	Quarterly

* The inner ring of stations in the southern sectors are located within 1 mile because of the main cooling reservoir

EXPOSURE: AIRBORNE

5 TOTAL SAMPLING STATIONS

Sample Media, Number, Approximate Location, and Distance of Sample Stations from Containment.	Routine Sampling Mode	Nominal Collection Frequency	Analysis Type	Minimum Analysis Frequency
<p><u>Charcoal and Particulate Filters</u></p> <p>3- Located at the exclusion zone, N, NNW, NW Sectors, 1 mile.</p> <p>1- Located in Bay City, 14 miles.</p> <p>1- Control Station, located in a minimal wind direction (WSW), 10 miles.</p>	Continuous sampler operations	Weekly or more frequently if required by dust loading	<p><u>Radioiodine Canister:</u> I-131</p> <p><u>Particulate Sampler:</u> Gross Beta Activity</p> <p>Gamma-Isotopic of composite (by location)</p>	<p>Weekly</p> <p>Following filter change</p> <p>Quarterly</p>

EXPOSURE: WATERBORNE

9 TOTAL SAMPLING STATIONS

Sample Media, Number And Approximate Location of Sample Stations	Routine Sampling Mode	Nominal Collection Frequency	Analysis Type	Minimum Analysis Frequency
<p><u>Surface</u></p> <p>1- Located in MCR at the MCR blowdown structure.</p> <p>1- Located above the site on the Colorado River not influenced by plant discharge (control).</p> <p>1- Located downstream from blow down entrance into the Colorado River.</p> <p><u>Ground</u></p> <p>5- Located in wells used to monitor tritium migration in the shallow aquifer.</p>	<p>Composite sample over a 1 month period (grab if not available)</p> <p>Grab</p>	<p>Monthly</p> <p>Quarterly</p>	<p>Gamma-Isotopic</p> <p>Tritium</p> <p>Gamma-Isotopic & Tritium</p>	<p>Monthly</p> <p>Quarterly Composite</p> <p>Quarterly</p>

Radiological Environmental Operating Report

EXPOSURE: WATERBORNE (CONTINUED)

Sample Media, Number And Approximate Location of Sample Stations	Routine Sampling Mode	Nominal Collection Frequency	Analysis Type	Minimum Analysis Frequency
<u>Drinking Water</u> 1- Located on site. * 1- Located at a control station.	Grab	Monthly	Gross Beta & Gamma-Isotopic	Monthly
<u>Sediment</u> 1- Located above the site on the Colorado River, not influenced by plant discharge. 1- Located downstream from blowdown entrance into the Colorado River. 1- Located in MCR.	Grab	Semiannually	Tritium Gamma-Isotopic	Quarterly Composites Semiannually

* No municipal water systems are affected by STP. This sample taken from deep aquifer supplying drinking water to employees while at work.

EXPOSURE: INGESTION

7 TOTAL SAMPLING STATIONS

Sample Media, Number And Approximate Location of Sample Stations	Routine Sampling Mode	Nominal Collection Frequency	Analysis Type	Minimum Analysis Frequency
<u>Milk</u> *	Grab	Semi-monthly when animals are on pasture; monthly at other times.	Gamma-Isotopic And Low Level I-131	Semi-monthly when animals are on pasture; monthly at other times.
<u>Broadleaf Vegetation**</u> 2- Located at the exclusion zone, N, NW, or NNW sectors. 1- Located in a minimal wind direction.	Grab	Monthly during growing season (When available)	Gamma-Isotopic	As collected

* Limited source of sample in vicinity of the South Texas Project. (Attempts will be made to obtain samples when available.)

** Three different kinds of broadleaf vegetation are to be collected over the growing season, not each collection period.

EXPOSURE: INGESTION (continued)

Sample Media, Number And Approximate Location of Sample Stations	Routine Sampling Mode	Nominal Collection Frequency	Analysis Type	Minimum Analysis Frequency
<u>Fish and Invertebrates (edible portions)</u> 1- Representing commercially or recreational important species in vicinity of STP that maybe influenced by plant operation. 1- Same or analogous species in area not influenced by STP. 1- Same or analogous species in the MCR.	Grab	Sample semi-annually	Gamma-Isotopic on edible portions	As collected
<u>Agricultural Products</u> *	Grab	At time of harvest	Gamma-Isotopic Analysis in edible portion	As collected
<u>Domestic Meat</u> 1- Represents domestic stock fed on crops grown exclusively within 10 miles of the plant.	Grab	Annually	Gamma-Isotopic	As collected

* No sample stations have been identified in the vicinity of the site. Presently no agricultural land is irrigated by water into which liquid plant wastes will be discharged. Agricultural products will be considered if these conditions change.

2008 Environmental Report

TABLE 2
SAMPLE MEDIA AND LOCATION DESCRIPTIONS

MEDIA CODE	STATION CODE	VECTOR (Approximate)	LOCATION DESCRIPTION
DR AI AP VB VP SO	001	1 mile N	FM 521
DR	002	1 mile NNE	FM 521
DR	003	1 mile NE	FM 521
DR	004	1 mile ENE	FM 521
DR	005	1 mile E	FM 521
DR AI AP SO	006	3.5 miles ESE	Site near Reservoir Makeup Pumping Facility
DR	007	3.5 miles SE	MCR Dike
DR	008	0.25 mile SSE	MCR Dike
DR	009	0.25 mile S	MCR Dike
DR	010	0.25 mile SSW	MCR Dike
DR	011	0.5 mile SW	MCR Dike
DR	012	1.5 mile WSW	MCR Dike
DR	013	1.5 mile W	FM 521
DR	014	1.5 mile WNW	FM 521
DR AI AP VB SO VP	015	1 mile NW	FM 521
DR AI AP VB SO VP	016	1 mile NNW	FM 521
DR	017	6.5 miles N	Buckeye - FM 1468
DR AI AP SO	018	5.5 miles NNE	OXEA Corp. - FM 3057
DR	019	5.5 miles NE	FM 2668

MCR-STP Main Cooling Reservoir

STP - South Texas Project

Media codes typed in bold satisfy collection requirement described in Table 1.

* Control Station

Radiological Environmental Operating Report

TABLE 2
SAMPLE MEDIA AND LOCATION DESCRIPTIONS

MEDIA CODE	STATION CODE	VECTOR (Approximate)	LOCATION DESCRIPTION
DR	020	5 miles ENE	FM 2668 & FM 2078
DR	021	5 miles E	FM 521 & FM 2668
DR	022	7 miles E	Equistar Chemical Plant
DR	023 *	16 miles ENE	Intersection of FM 521 and FM 2540
DR	024	4 miles SSE	MCR Dike
DR	025	4 miles S	MCR Dike
DR	026	4 miles SSW	MCR Dike
DR	027	2.5 miles SW	MCR Dike
DR	028	5 miles WSW	FM 1095 & Ellis Road
DR SO	029	4.5 miles W	FM 1095
DR	030	6 miles WNW	Tres Palacios Oaks, FM 2853
DR	031	5.5 miles NW	Wilson Creek Road
DR	032	3.5 miles NNW	FM 1468
DR AI AP SO	033	14 miles NNE	Microwave Tower at end of Kilowatt Road in Bay City
DR	034	7.5 miles ENE	Wadsworth Water Supply Pump Station
DR AI AP SO	035	8.5 miles SSE	Matagorda
DR	036	9 miles WSW	College Port
DR AI AP VB VP SO	037*	10 miles WSW	Palacios AEP Substation
DR	038	10.5 miles NW	AEP Substation on TX 71 near Blessing

MCR-STP Main Cooling Reservoir

STP - South Texas Project

Media codes typed in bold satisfy collection requirement described in Table 1.

* Control Station

2008 Environmental Report

TABLE 2
SAMPLE MEDIA AND LOCATION DESCRIPTIONS

MEDIA CODE	STATION CODE	VECTOR (Approximate)	LOCATION DESCRIPTION
DR AI AP SO	039	9 miles NW	TX 35 under High Voltage Power lines near Tidehaven High School
DR	040	4.5 miles SW	Citrus Grove
DR	041	2.0 miles ESE	MCR Dike
DR	042	8.5 miles NW	FM 459 at Tidehaven Intermediate School
DR	043	4.5 miles SE	Site boundary at blowdown outlet
WG	205	4.0 miles SE	Piezometer Well #446A, 40' deep
WG	206	4.0 miles SE	Piezometer Well #446, 78' deep
WS	209	2 miles ESE	Kelly Lake
WD	210	On Site	Approved drinking water supply from STP
WS S1	211	3.5 miles S	Site, E. Branch Little Robbins Slough
WS S1	212	4 miles S	Little Robbins Slough
WS S1	213	4 miles SE	West Branch Colorado River
F (1,2, or 3) CC	214	2.5 miles SE	MCR at Makeup Water Discharge
S2	215	0.5 mile SW	MCR at Circulating Water Discharge
WS S2	216	3.5 miles SSE	MCR at blowdown structure
F (1, 2, or 3) CC CS OY	222	>10 miles	West Matagorda Bay
WS S(1 or 2)	227	5-6 miles SE	West bank of Colorado River downstream of STP across from channel marker #22
WD	228*	14 miles NNE	Le Tulle Park public water supply
WS S1	229	2.3 miles ESE	Drainage ditch north of the reservoir that empties into Colorado River upstream of the reservoir makeup pumping facility
S(1 or 2)	230	3.5 miles ESE	Colorado River at point where drainage ditch (#229) empties into it

MCR-STP Main Cooling Reservoir

STP - South Texas Project

Media codes typed in bold satisfy collection requirement described in Table 1.

* Control Station

Radiological Environmental Operating Report

TABLE 2
SAMPLE MEDIA AND LOCATION DESCRIPTIONS

MEDIA CODE	STATION CODE	VECTOR (Approximate)	LOCATION DESCRIPTION
S(1 or 2) WS	233	4.5 miles SE	Colorado River where MCR blowdown discharge channel empties into it.
WG	235	3.8 miles S	Well B-3 directly south from MCR
B8	236	N/A	STP Protected Area
WS	237	3.7 miles SSE	Blowdown discharge channel from MCR
S(1 or 2) WS	242*	>10 miles N	Colorado River where it intersects Highway 35
WS	243*	>10 miles N	Colorado River upstream of Bay City Dam at the Lower Colorado River Authority pumping station
WG	245	4.5 miles SSE	Water well approximately 60' deep located on private property about 0.5 miles south of MCR
WS	247	<1 mile E	Essential Cooling Pond
F(1,2, or 3)	249*	N/A	Control sample purchased from a local retailer
SO	250	0.75 miles NW	Sewage sludge land farming area
WG	251	4.0 miles SSE	Test Well B-4, upper aquifer
WG	255	4.2 miles SE	Piezometer Well # 415 110' deep
WG	256	2.8 miles ESE	Piezometer Well # 417 100' deep
WG	257	3.9 miles SSW	Piezometer Well # 421-02, 80' deep 1.1 miles down STP Road from Well # 258 approximately 20' inside east fence (site boundary)
WG	258	2.9 miles SW	Piezometer Well # 435-01, 1.5 miles down STP Road from HWY 521 along east fence (site boundary)
WG	259	2.9 miles SW	Piezometer Well # 435-02, 1.5 miles down STP Road from HWY 521 20' east of fence (site boundary)
WG	260	3.7 miles S	Piezometer Well # 437, 74' deep
WG	263	3.2 miles ESE	Piezometer Well # 447, 104' deep

MCR-STP Main Cooling Reservoir

STP - South Texas Project

Media codes typed in bold satisfy collection requirement described in Table 1.

* Control Station

2008 Environmental Report

TABLE 2
SAMPLE MEDIA AND LOCATION DESCRIPTIONS

MEDIA CODE	STATION CODE	VECTOR (Approximate)	LOCATION DESCRIPTION
WG	264	3.2 miles ESE	Piezometer Well # 447A , 46' deep
WG	266	0.68 miles NW	Piezometer Well # 602A, 40' deep
WG	267	2.7 miles ESE	Windmill north of Heavy Haul Road
WG	268	3.0 miles SE	Windmill west of MCR
WG	269	4.2 miles SSE	Windmill south of STP owner contolled area on private land
WG	270	2.9 miles SW	Monitoring Well # MW-0805L, depth 49'
WG	271	2.9 miles SW	Monitoring Well # MW-0805U, depth 33'
F(1, 2, or 3) CC S2	300	S	STP Main Cooling Reservoir
WW	701	4 miles S	MCR Relief Well # 440
WS	Q01	N/A	Quarterly composite of station #227 and/or alternate #233
WS	Q02	N/A	Quarterly composite of station #243 and/or alternate #242

MCR-STP Main Cooling Reservoir

STP - South Texas Project

Media codes typed in bold satisfy collection requirement described in Table 1.

* Control Station

Radiological Environment Operating Report

2008 Radiological Environmental Monitoring Program Analysis Summary

An analysis summary for all of the required samples is given in Table 3. The table has been formatted to resemble a United States Nuclear Regulatory Commission industry standard. Modifications have been made for the sole purpose of reading ease. Only positive values are given in this table.

Media type is printed at the top left of each table, and the units of measurement are printed at the top right. The first column lists the type of radioactivity or specific radionuclide for which each sample was analyzed. The second column gives the total number of analyses performed and the total number of non-routine analyses for each indicated nuclide. (A non-routine measurement is a sample whose measured activity is greater than the reporting levels for Radioactivity Concentrations in Environmental Samples.) The "LOWER LIMIT OF DETECTION" column lists the normal measurement sensitivities achieved which were more sensitive than specified by the Nuclear Regulatory Commission.

A set of statistical parameters is listed for each radionuclide in the remaining columns. The parameters contain information from the indicator locations, the location having the highest annual mean, and information from the control stations. Some sample types do not have control stations. When this is the case, "no samples" is listed in the control location column. For each of these groups of data, the following is calculated:

- ★ The mean value of positive real values.
- ★ The number of positive real measurements / the total number of analyses.
- ★ The lowest and highest values for the analysis.

The data placed in the table are from the samples listed in Table 1. Additional thermoluminescent dosimeters were utilized each quarter for quality purposes. The minimum samples required by Table 1 were supplemented in 2008 by four surface water samples, seven additional ground water samples, and one sediment sample from the Main Cooling Reservoir. Fish, and vegetation samples vary in number according to availability but also exceeded the minimum number required by Table 1.



Photo By: Breck Sacra

2008 Environmental Report

TABLE 3

2008 RADIOLOGICAL ENVIRONMENTAL MONITORING PROGRAM ANALYSIS SUMMARY

Medium: Direct Radiation

Units: MilliRoentgen/Standard Quarter

ANALYSIS TYPE	TOTAL ANALYSES /NONROUTINE MEASUREMENTS	LOWER LIMIT OF DETECTION	INDICATOR LOCATIONS MEAN † RANGE	LOCATION WITH HIGHEST ANNUAL MEAN LOCATION INFORMATION	MEAN † RANGE	CONTROL LOCATIONS MEAN † RANGE
Gamma	175/ 0	---	1.4E+01 (167/ 167) (1.1E+01 - 1.8E+01)	1 mile W (#013)	1.7E+01 (4 / 4) (1.7E+01 - 1.8E+01)	1.5E+01 (9 / 9) (1.3E+01 - 1.7E+01)

† Number of positive measurements / total measurements at specified locations.

TABLE 3

2008 RADIOLOGICAL ENVIRONMENTAL MONITORING PROGRAM ANALYSIS SUMMARY

Medium: Airborne Particulate & Radioiodine

Units: PicoCuries per Cubic Meter

ANALYSIS TYPE	TOTAL ANALYSES /NONROUTINE MEASUREMENTS	LOWER LIMIT OF DETECTION	INDICATOR LOCATIONS MEAN † RANGE	LOCATION WITH HIGHEST ANNUAL MEAN LOCATION INFORMATION	MEAN † RANGE	CONTROL LOCATIONS MEAN † RANGE
Gross Beta	265/ 0	1.4E-03	2.3E-02 (212 / 212) (1.1E-02 - 4.4E-02)	10 miles WSW (#037)	2.3E-02 (53 / 53) (1.2E-02 - 4.5E-02)	2.3E-02 (53 / 53) (1.2E-02 - 4.5E-02)
Iodine-131	265/ 0	1.5E-02	-- (0 / 212)	--	--	-- (0 / 53)
Cesium-134	20/ 0	4.8E-04	-- (0 / 16)	--	--	-- (0 / 4)
Cesium-137	20/ 0	4.4E-04	-- (0 / 16)	--	--	-- (0 / 4)
Manganese-54	20/ 0	5.0E-04	-- (0 / 16)	--	--	-- (0 / 4)
Iron-59	20/ 0	2.2E-03	-- (0 / 16)	--	--	-- (0 / 4)
Cobalt-58	20/ 0	7.5E-04	-- (0 / 16)	--	--	-- (0 / 4)
Cobalt-60	20/ 0	4.9E-04	-- (0 / 16)	--	--	-- (0 / 4)
Zinc-65	20/ 0	1.2E-03	-- (0 / 16)	--	--	-- (0 / 4)
Zirconium-95	20/ 0	1.4E-03	-- (0 / 16)	--	--	-- (0 / 4)
Niobium-95	20/ 0	8.0E-04	-- (0 / 16)	--	--	-- (0 / 4)
Lanthanum-140 Barium-140	20/ 0	1.0E-02	-- (0 / 16)	--	--	-- (0 / 4)

† Number of positive measurements / total measurements at specified locations.

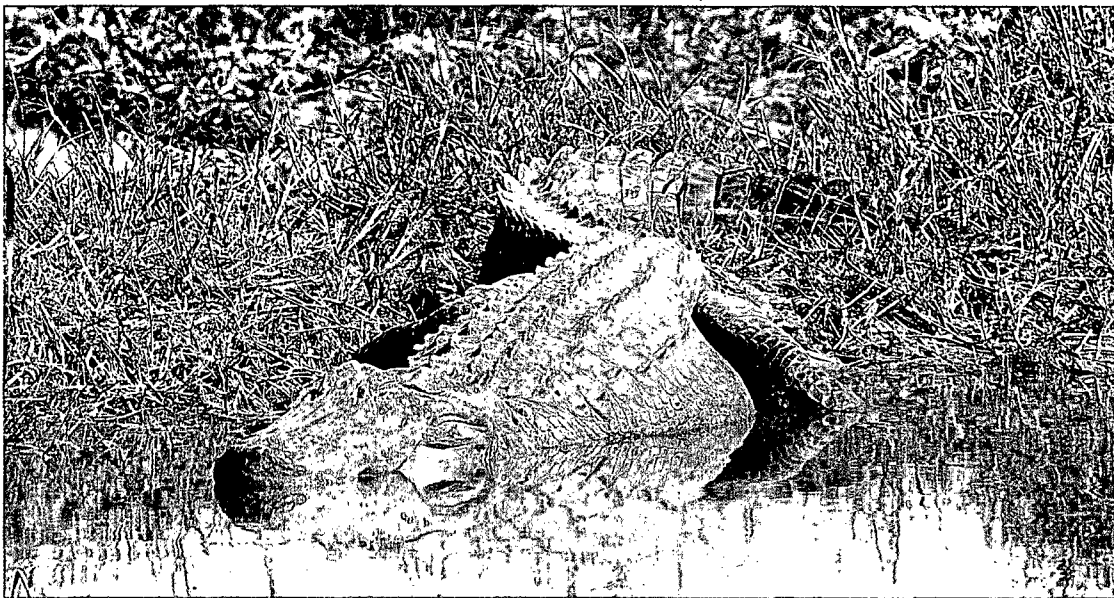


Photo By: Gwenna Kelton

Radiological Environment Operating Report

TABLE 3

2008 RADIOLOGICAL ENVIRONMENTAL MONITORING PROGRAM ANALYSIS SUMMARY

Medium: Surface Water Units: PicoCuries per Kilogram

ANALYSIS TYPE	TOTAL ANALYSES /NONROUTINE MEASUREMENTS	LOWER LIMIT OF DETECTION	INDICATOR LOCATIONS MEAN † RANGE	LOCATION WITH HIGHEST ANNUAL MEAN LOCATION INFORMATION	MEAN † RANGE	CONTR. LOCATIONS MEAN † RANGE
Hydrogen-3	12/ 0	2.6E+02	1.1E+04 (4 / 8) (1.0E+04 - 1.3E+04)	3 miles SSE (#216)	1.1E+04 (4 / 4) (1.0E+04 - 1.3E+04)	-- (0 / 4)
Iodine-131	40/ 0	4.5E+00	-- (0 / 28)	--	--	-- (0 / 12)
Cesium-134	40/ 0	2.1E+00	-- (0 / 28)	--	--	-- (0 / 12)
Cesium-137	40/ 0	2.2E+00	-- (0 / 28)	--	--	-- (0 / 12)
Manganese-54	40/ 0	2.2E+00	-- (0 / 28)	--	--	-- (0 / 12)
Iron-59	40/ 0	4.9E+00	-- (0 / 28)	--	--	-- (0 / 12)
Cobalt-58	40/ 0	2.3E+00	-- (0 / 28)	--	--	-- (0 / 12)
Cobalt-60	40/ 0	2.2E+00	-- (0 / 28)	--	--	-- (0 / 12)
Zinc-65	40/ 0	4.7E+00	-- (0 / 28)	--	--	-- (0 / 12)
Zirconium-95	40/ 0	4.1E+00	-- (0 / 28)	--	--	-- (0 / 12)
Niobium-95	40/ 0	2.3E+00	-- (0 / 28)	--	--	-- (0 / 12)
Lanthanum-140 Barium-140	40/ 0	4.8E+00	-- (0 / 28)	--	--	-- (0 / 12)

† Number of positive measurements / total measurements at specified locations.

TABLE 3

2008 RADIOLOGICAL ENVIRONMENTAL MONITORING PROGRAM ANALYSIS SUMMARY

Medium: Ground Water (*On site test well*) Units: PicoCuries per Kilogram

ANALYSIS TYPE	TOTAL ANALYSES /NONROUTINE MEASUREMENTS	LOWER LIMIT OF DETECTION	INDICATOR LOCATIONS MEAN † RANGE	LOCATION WITH HIGHEST ANNUAL MEAN LOCATION INFORMATION	MEAN † RANGE	CONTR. LOCATIONS MEAN † RANGE
Hydrogen-3	27/ 0	2.6E+02	2.6E+03 (19 / 27) (4.0E+02 - 5.5E+03)	4.0 miles SSE (#251)	5.1E+03 (5 / 5) (4.8E+03 - 5.5E+03)	no samples
Iodine-131	27/ 0	3.6E+00	-- (0 / 27)	--	--	no samples
Cesium-134	27/ 0	2.5E+00	-- (0 / 27)	--	--	no samples
Cesium-137	27/ 0	2.6E+00	-- (0 / 27)	--	--	no samples
Manganese-54	27/ 0	2.5E+00	-- (0 / 27)	--	--	no samples
Iron-59	27/ 0	5.2E+00	-- (0 / 27)	--	--	no samples
Cobalt-58	27/ 0	2.6E+00	-- (0 / 27)	--	--	no samples
Cobalt-60	27/ 0	2.6E+00	-- (0 / 27)	--	--	no samples
Zinc-65	27/ 0	6.4E+00	-- (0 / 27)	--	--	no samples
Zirconium-95	27/ 0	4.4E+00	-- (0 / 27)	--	--	no samples
Niobium-95	27/ 0	2.8E+00	-- (0 / 27)	--	--	no samples
Lanthanum-140 Barium-140	27/ 0	4.2E+00	-- (0 / 27)	--	--	no samples

† Number of positive measurements / total measurements at specified locations.

2008 Environmental Report

TABLE 3

2008 RADIOLOGICAL ENVIRONMENTAL MONITORING PROGRAM ANALYSIS SUMMARY

Medium: Drinking Water

Units: PicoCuries per Kilogram

ANALYSIS TYPE	TOTAL ANALYSES /NONROUTINE MEASUREMENTS	LOWER LIMIT OF DETECTION	INDICATOR LOCATIONS MEAN † RANGE	LOCATION WITH HIGHEST ANNUAL MEAN LOCATION INFORMATION	MEAN † RANGE	CONTROL LOCATIONS MEAN † RANGE
Gross Beta	26/ 0	1.2E-01	1.9E+00 (13 / 13) (1.4E+00 - 3.2E+00)	14 miles NNE (#228)	2.6E+00 (13 / 13) (1.7E+00 - 3.5E+00)	2.6E+00 (13 / 13) (1.7E+00 - 3.5E+00)
Hydrogen-3	8/ 0	2.6E+02	-- (0 / 4)	--	--	-- (0 / 4)
Iodine-131	26/ 0	3.8E+00	-- (0 / 13)	--	--	-- (0 / 13)
Cesium-134	26/ 0	2.5E+00	-- (0 / 13)	--	--	-- (0 / 13)
Cesium-137	26/ 0	2.6E+00	-- (0 / 13)	--	--	-- (0 / 13)
Manganese-54	26/ 0	2.5E+00	-- (0 / 13)	--	--	-- (0 / 13)
Iron-59	26/ 0	5.2E+00	-- (0 / 13)	--	--	-- (0 / 13)
Cobalt-58	26/ 0	2.5E+00	-- (0 / 13)	--	--	-- (0 / 13)
Cobalt-60	26/ 0	2.6E+00	-- (0 / 13)	--	--	-- (0 / 13)
Zinc-65	26/ 0	6.5E+00	-- (0 / 13)	--	--	-- (0 / 13)
Zirconium-95	26/ 0	4.4E+00	-- (0 / 13)	--	--	-- (0 / 13)
Niobium-95	26/ 0	2.8E+00	-- (0 / 13)	--	--	-- (0 / 13)
Lanthanum-140 Barium-140	26/ 0	4.3E+00	-- (0 / 13)	--	--	-- (0 / 13)

† Number of positive measurements / total measurements at specified locations

TABLE 3

2008 RADIOLOGICAL ENVIRONMENTAL MONITORING PROGRAM ANALYSIS SUMMARY

Medium: Rain Water

Units: PicoCuries per Kilogram

ANALYSIS TYPE	TOTAL ANALYSES /NONROUTINE MEASUREMENTS	LOWER LIMIT OF DETECTION	INDICATOR LOCATIONS MEAN † RANGE	LOCATION WITH HIGHEST ANNUAL MEAN LOCATION INFORMATION	MEAN † RANGE	CONTROL LOCATIONS MEAN † RANGE
Hydrogen-3	4/0	2.6E+02	-- (0 / 4)	--	--	no samples
Iodine-131	4/0	4.1E+00	-- (0 / 4)	--	--	no samples
Cesium-134	4/0	2.6E+00	-- (0 / 4)	--	--	no samples
Cesium-137	4/0	2.7E+00	-- (0 / 4)	--	--	no samples
Manganese-54	4/0	2.7E+00	-- (0 / 4)	--	--	no samples
Iron-59	4/0	5.4E+00	-- (0 / 4)	--	--	no samples
Cobalt-58	4/0	2.6E+00	-- (0 / 4)	--	--	no samples
Cobalt-60	4/0	2.7E+00	-- (0 / 4)	--	--	no samples
Zinc-65	4/0	5.4E+00	-- (0 / 4)	--	--	no samples
Zirconium-95	4/0	4.8E+00	-- (0 / 4)	--	--	no samples
Niobium-95	4/0	2.6E+00	-- (0 / 4)	--	--	no samples
Lanthanum-140 Barium-140	4/0	4.1E+00	-- (0 / 4)	--	--	no samples

† Number of positive measurements / total measurements at specified locations.

Radiological Environment Operating Report

TABLE 3

2008 RADIOLOGICAL ENVIRONMENTAL MONITORING PROGRAM ANALYSIS SUMMARY

Medium: Sediment-Shore line Units: PicoCuries per Kilogram dry weight

ANALYSIS TYPE	TOTAL ANALYSES /NONROUTINE MEASUREMENTS	LOWER LIMIT OF DETECTION	INDICATOR LOCATIONS MEAN † RANGE	LOCATION WITH HIGHEST ANNUAL MEAN LOCATION INFORMATION	MEAN † RANGE	CONTROL LOCATIONS MEAN † RANGE
Cesium-134	3/0	3.2E+01	--- (0/ 1)	--	--	-- (0/ 2)
Cesium-137	3/0	3.2E+01	--- (0/ 1)	--	--	-- (0/ 2)
Manganese-54	3/0	3.3E+01	--- (0/ 1)	--	--	-- (0/ 2)
Iron-59	3/0	1.2E+02	--- (0/ 1)	--	--	-- (0/ 2)
Cobalt-58	3/0	4.1E+01	--- (0/ 1)	--	--	-- (0/ 2)
Cobalt-60	3/0	3.2E+01	--- (0/ 1)	--	--	-- (0/ 2)
Zinc-65	3/0	1.0E+02	--- (0/ 1)	--	--	-- (0/ 2)
Zirconium-95	3/0	8.1E+01	--- (0/ 1)	--	--	-- (0/ 2)
Niobium-95	3/0	5.0E+01	--- (0/ 1)	--	--	-- (0/ 2)
Lanthanum-140	3/0	5.8E+02	--- (0/ 1)	--	--	-- (0/ 2)
Barium-140						

† Number of positive measurements/ total measurements at specified locations.

TABLE 3

2008 RADIOLOGICAL ENVIRONMENTAL MONITORING PROGRAM ANALYSIS SUMMARY

Medium: Sediment-Bottom Units: PicoCuries per Kilogram dry weight

ANALYSIS TYPE	TOTAL ANALYSES /NONROUTINE MEASUREMENTS	LOWER LIMIT OF DETECTION	INDICATOR LOCATIONS MEAN † RANGE	LOCATION WITH HIGHEST ANNUAL MEAN LOCATION INFORMATION	MEAN † RANGE	CONTROL LOCATIONS MEAN † RANGE
Cesium-134	2/0	2.7E+01	--- (0/ 2)	--	--	no samples
Cesium-137	2/0	1.6E+01	6.6E+01 (1/ 2) (6.6E+01 - 6.6E+01)	3 miles SSE (#216)	6.6E+01 (1/ 1) (6.6E+01 - 6.6E+01)	no samples
Manganese-54	2/0	3.5E+01	--- (0/ 2)	--	--	no samples
Iron-59	2/0	1.2E+02	--- (0/ 2)	--	--	no samples
Cobalt-58	2/0	4.2E+01	--- (0/ 2)	--	--	no samples
Cobalt-60	2/0	3.6E+01	--- (0/ 2)	--	--	no samples
Zinc-65	2/0	1.0E+02	--- (0/ 2)	--	--	no samples
Zirconium-95	2/0	8.4E+01	--- (0/ 2)	--	--	no samples
Niobium-95	2/0	5.2E+01	--- (0/ 2)	--	--	no samples
Lanthanum-140	2/0	4.3E+02	--- (0/ 2)	--	--	no samples
Barium-140						

† Number of positive measurements/ total measurements at specified locations.

2008 Environmental Report

TABLE 3

2008 RADIOLOGICAL ENVIRONMENTAL MONITORING PROGRAM ANALYSIS SUMMARY

Medium: **Banana Leaves** Units: PicoCuries per Kilogram wet weight

ANALYSIS TYPE	TOTAL ANALYSES /NONROUTINE MEASUREMENTS	LOWER LIMIT OF DETECTION	INDICATOR LOCATIONS MEAN † RANGE	LOCATION WITH HIGHEST ANNUAL MEAN LOCATION INFORMATION	ANNUAL MEAN † RANGE	CONTROL LOCATIONS MEAN † RANGE
Iodine-131	21/ 0	2.2E+01	-- (0/ 14)	--	--	-- (0/ 7)
Cesium-134	21/ 0	3.0E+00	-- (0/ 14)	--	--	-- (0/ 7)
Cesium-137	21/ 0	3.4E+00	-- (0/ 14)	--	--	-- (0/ 7)
Manganese-54	21/ 0	3.8E+00	-- (0/ 14)	--	--	-- (0/ 7)
Iron-59	21/ 0	1.4E+01	-- (0/ 14)	--	--	-- (0/ 7)
Cobalt-58	21/ 0	4.4E+00	-- (0/ 14)	--	--	-- (0/ 7)
Cobalt-60	21/ 0	4.7E+00	-- (0/ 14)	--	--	-- (0/ 7)
Zinc-65	21/ 0	1.2E+01	-- (0/ 14)	--	--	-- (0/ 7)
Zirconium-95	21/ 0	7.7E+00	-- (0/ 14)	--	--	-- (0/ 7)
Niobium-95	21/ 0	4.3E+00	-- (0/ 14)	--	--	-- (0/ 7)
Lanthanum-140 Barium-140	21/ 0	1.1E+01	-- (0/ 14)	--	--	-- (0/ 7)

† Number of positive measurements / total measurements at specified locations.

TABLE 3

2008 RADIOLOGICAL ENVIRONMENTAL MONITORING PROGRAM ANALYSIS SUMMARY

Medium: **Cana Leaves** Units: PicoCuries per Kilogram wet weight

ANALYSIS TYPE	TOTAL ANALYSES /NONROUTINE MEASUREMENTS	LOWER LIMIT OF DETECTION	INDICATOR LOCATIONS MEAN † RANGE	LOCATION WITH HIGHEST ANNUAL MEAN LOCATION INFORMATION	ANNUAL MEAN † RANGE	CONTROL LOCATIONS MEAN † RANGE
Iodine-131	6/0	1.5E+01	--- (0/ 4)	--	--	-- (0/ 2)
Cesium-134	6/0	4.0E+00	--- (0/ 4)	--	--	-- (0/ 2)
Cesium-137	6/0	4.5E+00	--- (0/ 4)	--	--	-- (0/ 2)
Manganese-54	6/0	4.9E+00	--- (0/ 4)	--	--	-- (0/ 2)
Iron-59	6/0	1.6E+01	--- (0/ 4)	--	--	-- (0/ 2)
Cobalt-58	6/0	5.3E+00	--- (0/ 4)	--	--	-- (0/ 2)
Cobalt-60	6/0	6.4E+00	--- (0/ 4)	--	--	-- (0/ 2)
Zinc-65	6/0	1.5E+01	--- (0/ 4)	--	--	-- (0/ 2)
Zirconium-95	6/0	9.5E+00	--- (0/ 4)	--	--	-- (0/ 2)
Niobium-95	6/0	5.4E+00	--- (0/ 4)	--	--	-- (0/ 2)
Lanthanum-140 Barium-140	6/0	9.1E+00	--- (0/ 4)	--	--	-- (0/ 2)

† Number of positive measurements / total measurements at specified locations.

Radiological Environment Operating Report

TABLE 3

2008 RADIOLOGICAL ENVIRONMENTAL MONITORING PROGRAM ANALYSIS SUMMARY

Medium: Mustard Greens Units: PicoCuries per Kilogram wet weight

ANALYSIS TYPE	TOTAL ANALYSES /NONROUTINE MEASUREMENTS	LOWER LIMIT OF DETECTION	INDICATOR LOCATIONS MEAN † RANGE	LOCATION WITH HIGHEST ANNUAL MEAN LOCATION INFORMATION	MEAN † RANGE	CONTROL LOCATIONS MEAN † RANGE
Iodine-131	3/0	1.1E+01	--- (0 / 2)	--	--	-- (0 / 1)
Cesium-134	3/0	2.0E+00	--- (0 / 2)	--	--	-- (0 / 1)
Cesium-137	3/0	2.3E+00	--- (0 / 2)	--	--	-- (0 / 1)
Manganese-54	3/0	2.4E+00	--- (0 / 2)	--	--	-- (0 / 1)
Iron-59	3/0	9.0E+00	--- (0 / 2)	--	--	-- (0 / 1)
Cobalt-58	3/0	2.7E+00	--- (0 / 2)	--	--	-- (0 / 1)
Cobalt-60	3/0	3.3E+00	--- (0 / 2)	--	--	-- (0 / 1)
Zinc-65	3/0	7.9E+00	--- (0 / 2)	--	--	-- (0 / 1)
Zirconium-95	3/0	5.0E+00	--- (0 / 2)	--	--	-- (0 / 1)
Niobium-95	3/0	2.7E+00	--- (0 / 2)	--	--	-- (0 / 1)
Lanthanum-140 Barium-140	3/0	5.8E+00	--- (0 / 2)	--	--	-- (0 / 1)

† Number of positive measurements / total measurements at specified locations.

TABLE 3

2008 RADIOLOGICAL ENVIRONMENTAL MONITORING PROGRAM ANALYSIS SUMMARY

Medium: Fish - Piscivorous Units: PicoCuries per Kilogram wet weight

ANALYSIS TYPE	TOTAL ANALYSES /NONROUTINE MEASUREMENTS	LOWER LIMIT OF DETECTION	INDICATOR LOCATIONS MEAN † RANGE	LOCATION WITH HIGHEST ANNUAL MEAN LOCATION INFORMATION	MEAN † RANGE	CONTROL LOCATIONS MEAN † RANGE
Cesium-134	11/0	3.3E+01	--- (0 / 9)	--	--	-- (0 / 2)
Cesium-137	11/0	3.4E+01	--- (0 / 9)	--	--	-- (0 / 2)
Manganese-54	11/0	3.2E+01	--- (0 / 9)	--	--	-- (0 / 2)
Iron-59	11/0	7.2E+01	--- (0 / 9)	--	--	-- (0 / 2)
Cobalt-58	11/0	3.2E+01	--- (0 / 9)	--	--	-- (0 / 2)
Cobalt-60	11/0	3.8E+01	--- (0 / 9)	--	--	-- (0 / 2)
Zinc-65	11/0	7.7E+01	--- (0 / 9)	--	--	-- (0 / 2)
Zirconium-95	11/0	5.8E+01	--- (0 / 9)	--	--	-- (0 / 2)
Niobium-95	11/0	3.2E+01	--- (0 / 9)	--	--	-- (0 / 2)
Lanthanum-140 Barium-140	11/0	5.5E+01	--- (0 / 9)	--	--	-- (0 / 2)

† Number of positive measurements / total measurements at specified locations.

2008 Environmental Report

TABLE 3
2008 RADIOLOGICAL ENVIRONMENTAL MONITORING PROGRAM ANALYSIS SUMMARY

Medium: Fish - Crustacean & Insect Feeders Units: PicoCuries per Kilogram wet weight

ANALYSIS TYPE	TOTAL ANALYSES /NONROUTINE MEASUREMENTS	LOWER LIMIT OF DETECTION	INDICATOR LOCATIONS MEAN † RANGE	LOCATION WITH HIGHEST ANNUAL MEAN LOCATION INFORMATION	ANNUAL MEAN † RANGE	CONTROL LOCATIONS MEAN † RANGE
Cesium-134	4/0	3.0E+01	--- (0/ 4)	--	--	no samples
Cesium-137	4/0	3.2E+01	--- (0/ 4)	--	--	no samples
Manganese-54	4/0	3.2E+01	--- (0/ 4)	--	--	no samples
Iron-59	4/0	7.4E+01	--- (0/ 4)	--	--	no samples
Cobalt-58	4/0	3.1E+01	--- (0/ 4)	--	--	no samples
Cobalt-60	4/0	3.7E+01	--- (0/ 4)	--	--	no samples
Zinc-65	4/0	8.0E+01	--- (0/ 4)	--	--	no samples
Zirconium-95	4/0	5.5E+01	--- (0/ 4)	--	--	no samples
Niobium-95	4/0	3.2E+01	--- (0/ 4)	--	--	no samples
Lanthanum-140 Barium-140	4/0	6.0E+01	--- (0/ 4)	--	--	no samples

† Number of positive measurements / total measurements at specified locations.

TABLE 3
2008 RADIOLOGICAL ENVIRONMENTAL MONITORING PROGRAM ANALYSIS SUMMARY

Medium: Crustacean Shrimp Units: PicoCuries per Kilogram wet weight

ANALYSIS TYPE	TOTAL ANALYSES /NONROUTINE MEASUREMENTS	LOWER LIMIT OF DETECTION	INDICATOR LOCATIONS MEAN † RANGE	LOCATION WITH HIGHEST ANNUAL MEAN LOCATION INFORMATION	ANNUAL MEAN † RANGE	CONTROL LOCATIONS MEAN † RANGE
Cesium-134	4/0	3.5E+01	--- (0/ 2)	--	--	-- (0/ 2)
Cesium-137	4/0	3.5E+01	--- (0/ 2)	--	--	-- (0/ 2)
Manganese-54	4/0	3.4E+01	--- (0/ 2)	--	--	-- (0/ 2)
Iron-59	4/0	7.5E+01	--- (0/ 2)	--	--	-- (0/ 2)
Cobalt-58	4/0	3.2E+01	--- (0/ 2)	--	--	-- (0/ 2)
Cobalt-60	4/0	4.0E+01	--- (0/ 2)	--	--	-- (0/ 2)
Zinc-65	4/0	7.8E+01	--- (0/ 2)	--	--	-- (0/ 2)
Zirconium-95	4/0	5.8E+01	--- (0/ 2)	--	--	-- (0/ 2)
Niobium-95	4/0	3.4E+01	--- (0/ 2)	--	--	-- (0/ 2)
Lanthanum-140 Barium-140	4/0	6.0E+01	--- (0/ 2)	--	--	-- (0/ 2)

† Number of positive measurements / total measurements at specified locations.

Radiological Environment Operating Report

TABLE 3

2008 RADIOLOGICAL ENVIRONMENTAL MONITORING PROGRAM ANALYSIS SUMMARY

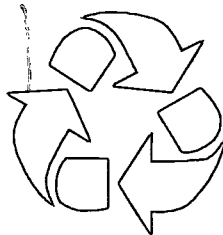
Medium: Beef Meat Units: PicoCuries per Kilogram wet weight

ANALYSIS TYPE	TOTAL ANALYSES /NONROUTINE MEASUREMENTS	LOWER LIMIT OF DETECTION	INDICATOR LOCATIONS MEAN † RANGE	LOCATION WITH HIGHEST ANNUAL MEAN LOCATION INFORMATION	MEAN † RANGE	CONTROL LOCATIONS MEAN † RANGE
Cesium-134	1/0	2.9E+01	--- (0/ 1)	---	---	no samples
Cesium-137	1/0	2.9E+01	--- (0/ 1)	---	---	no samples
Manganese-54	1/0	2.9E+01	--- (0/ 1)	---	---	no samples
Iron-59	1/0	1.4E+02	--- (0/ 1)	---	---	no samples
Cobalt-58	1/0	4.3E+01	--- (0/ 1)	---	---	no samples
Cobalt-60	1/0	3.6E+01	--- (0/ 1)	---	---	no samples
Zinc-65	1/0	8.1E+01	--- (0/ 1)	---	---	no samples
Zirconium-95	1/0	8.1E+01	--- (0/ 1)	---	---	no samples
Niobium-95	1/0	4.8E+01	--- (0/ 1)	---	---	no samples
Lanthanum-140 Barium-140	1/0	8.8E+02	--- (0/ 1)	---	---	no samples



Photo By: Virgil Fox





www.stpegs.com



Mixed Sources

Product group from well-managed forests, controlled sources and recycled wood or fiber

www.fsc.org Cert no. SGS-COC-001479
© 1996 Forest Stewardship Council

