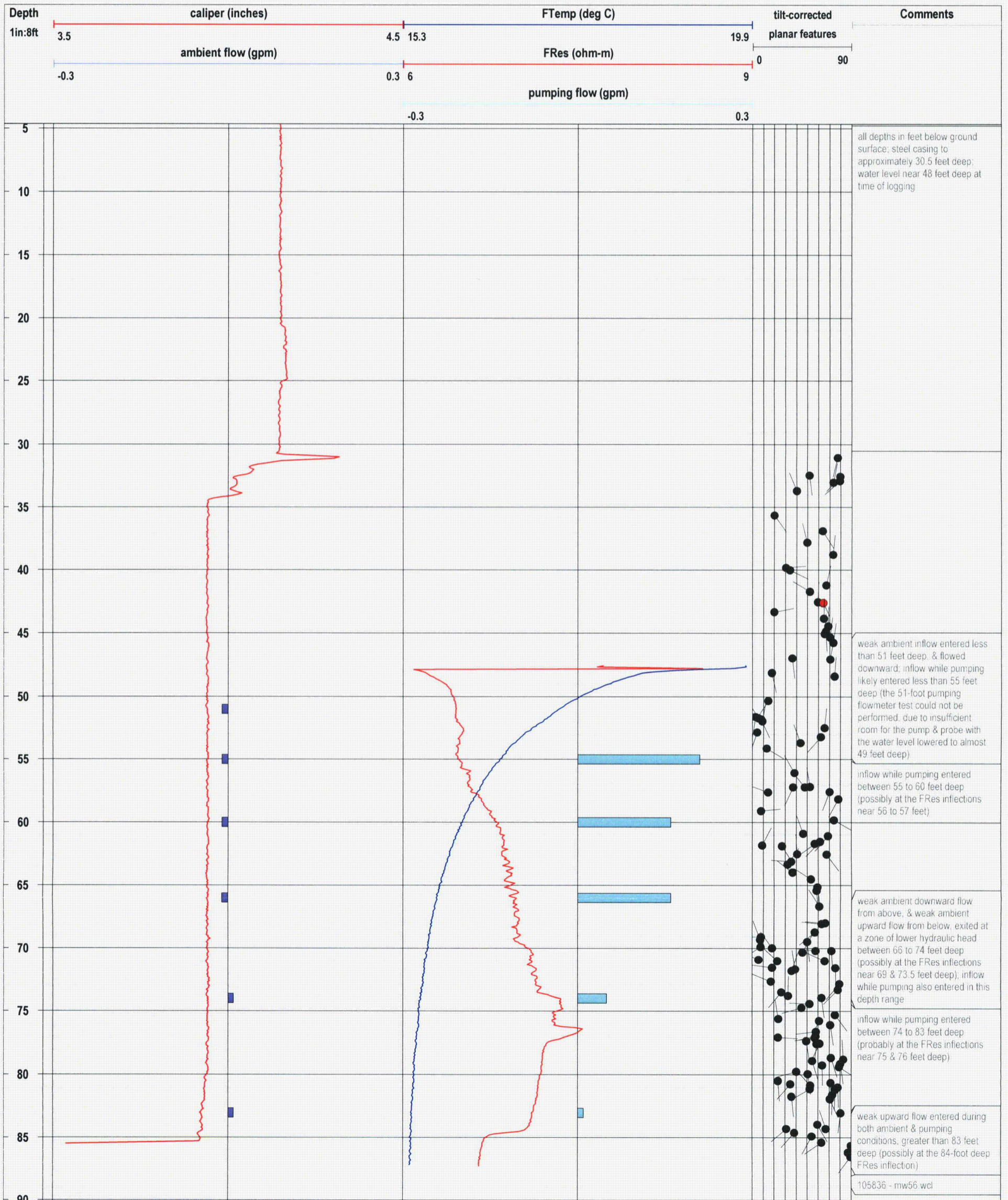
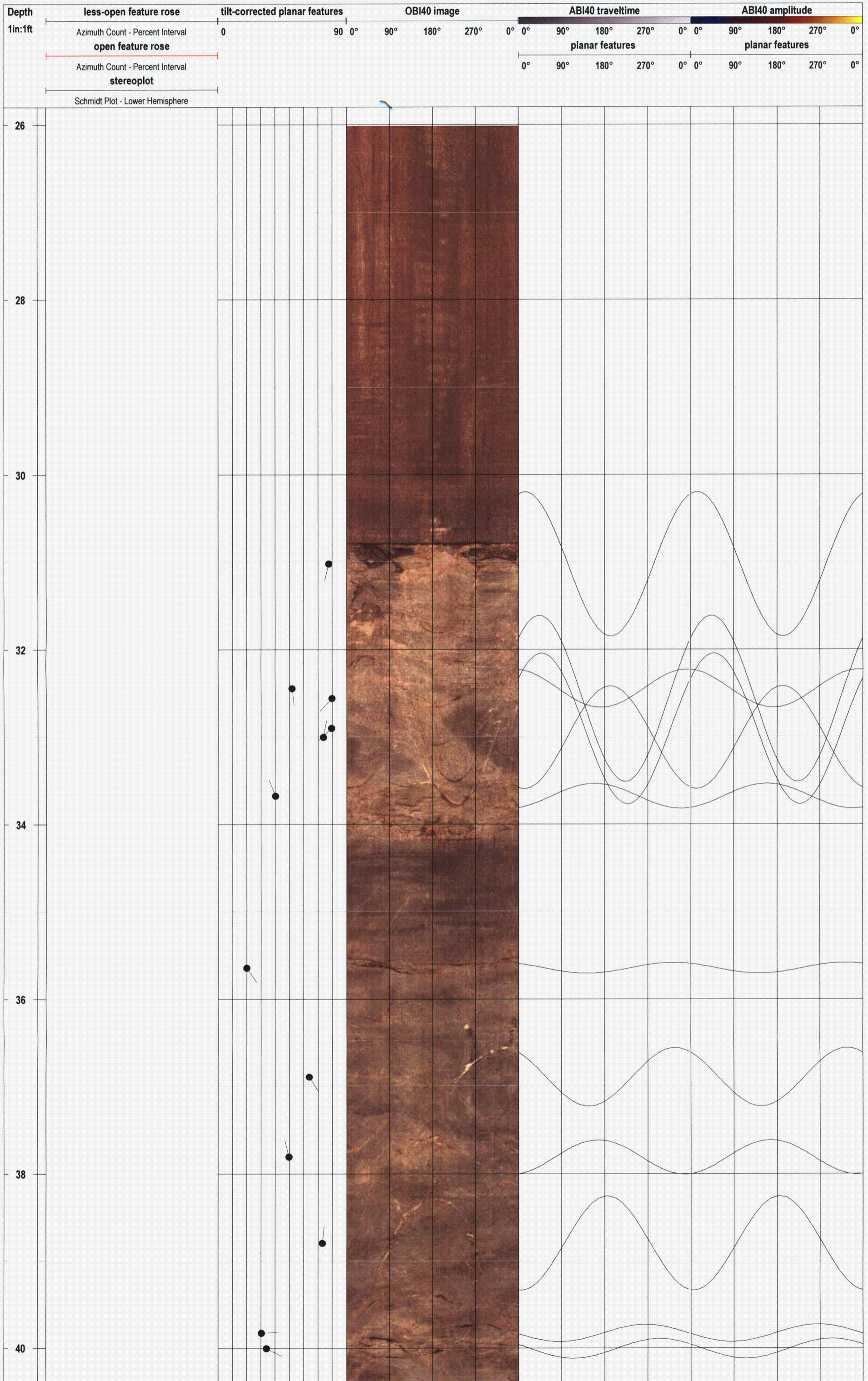
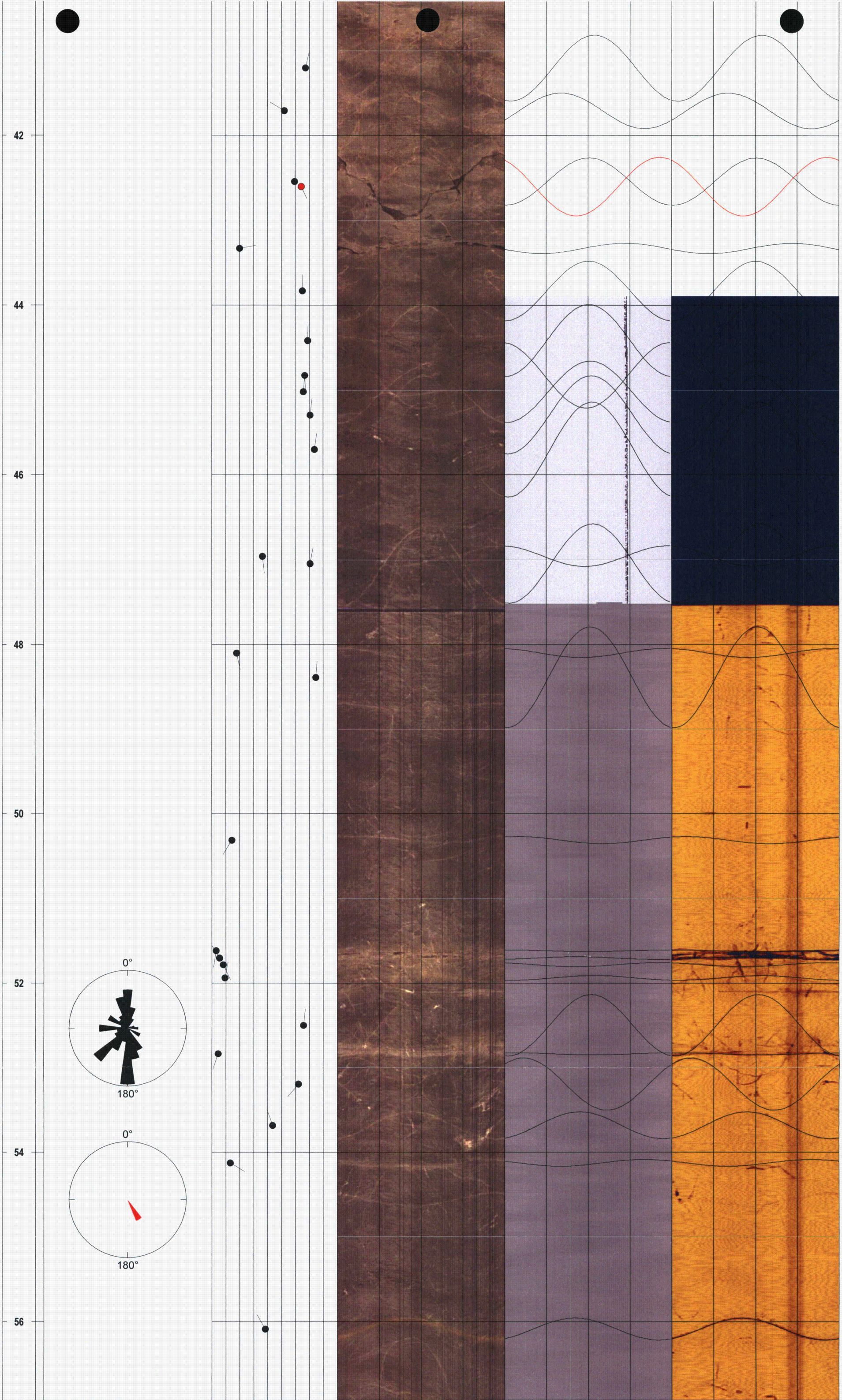


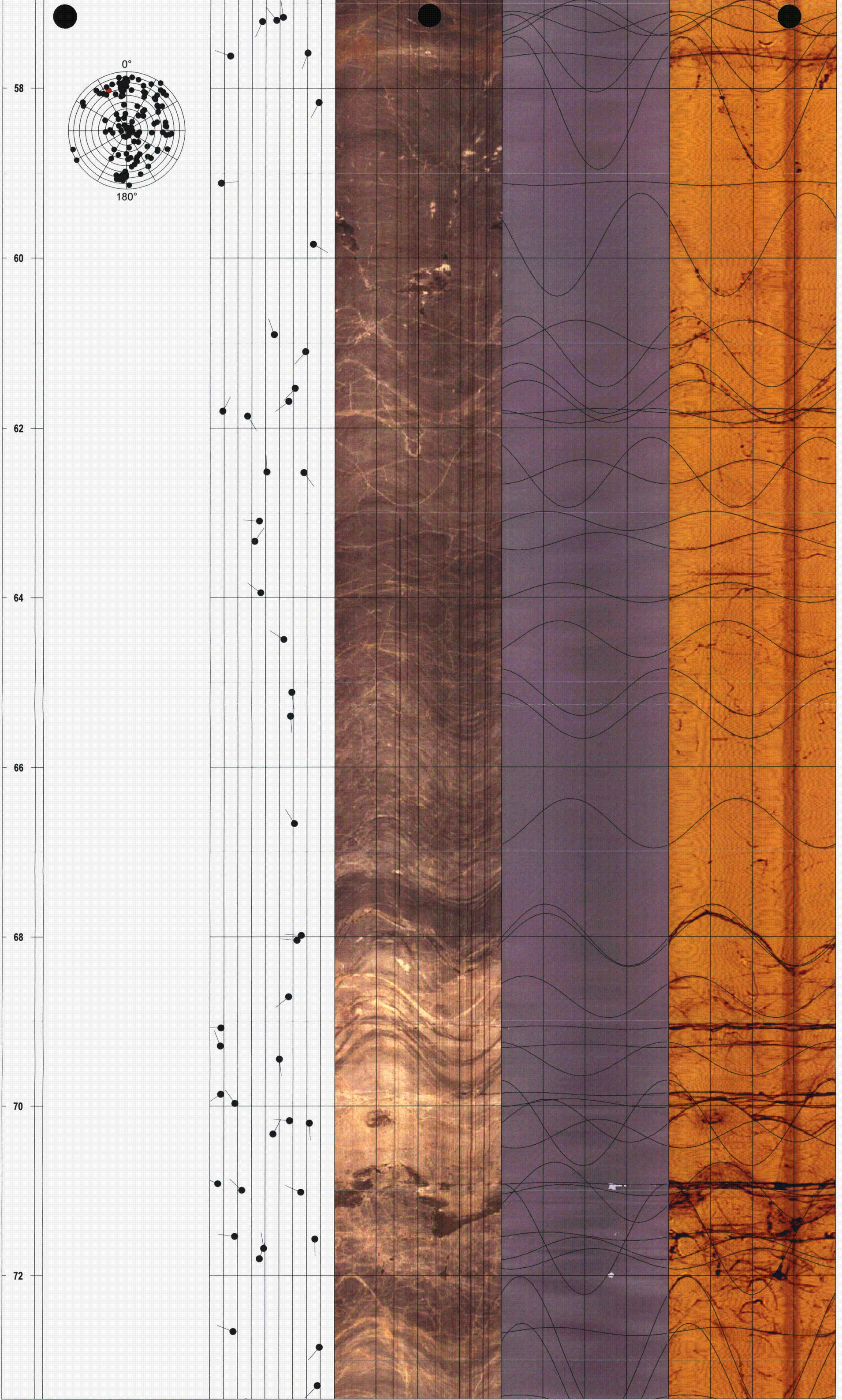
Project - Well: GZA / Buchanan, NY - MW-56 conventional logs



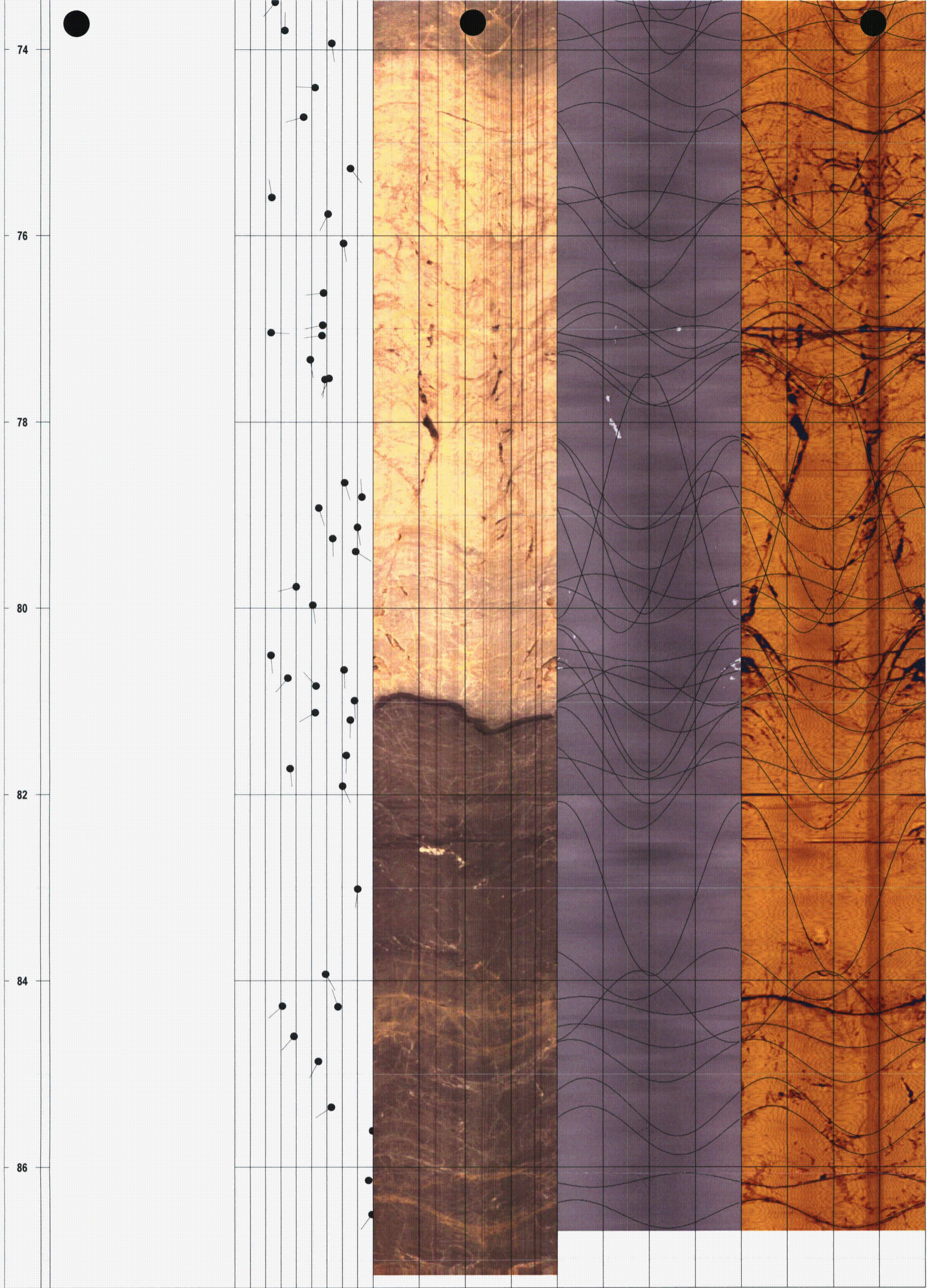
Project - Well: GZA / Buchanan, NY - MW-56 optical & acoustic televiewer logs



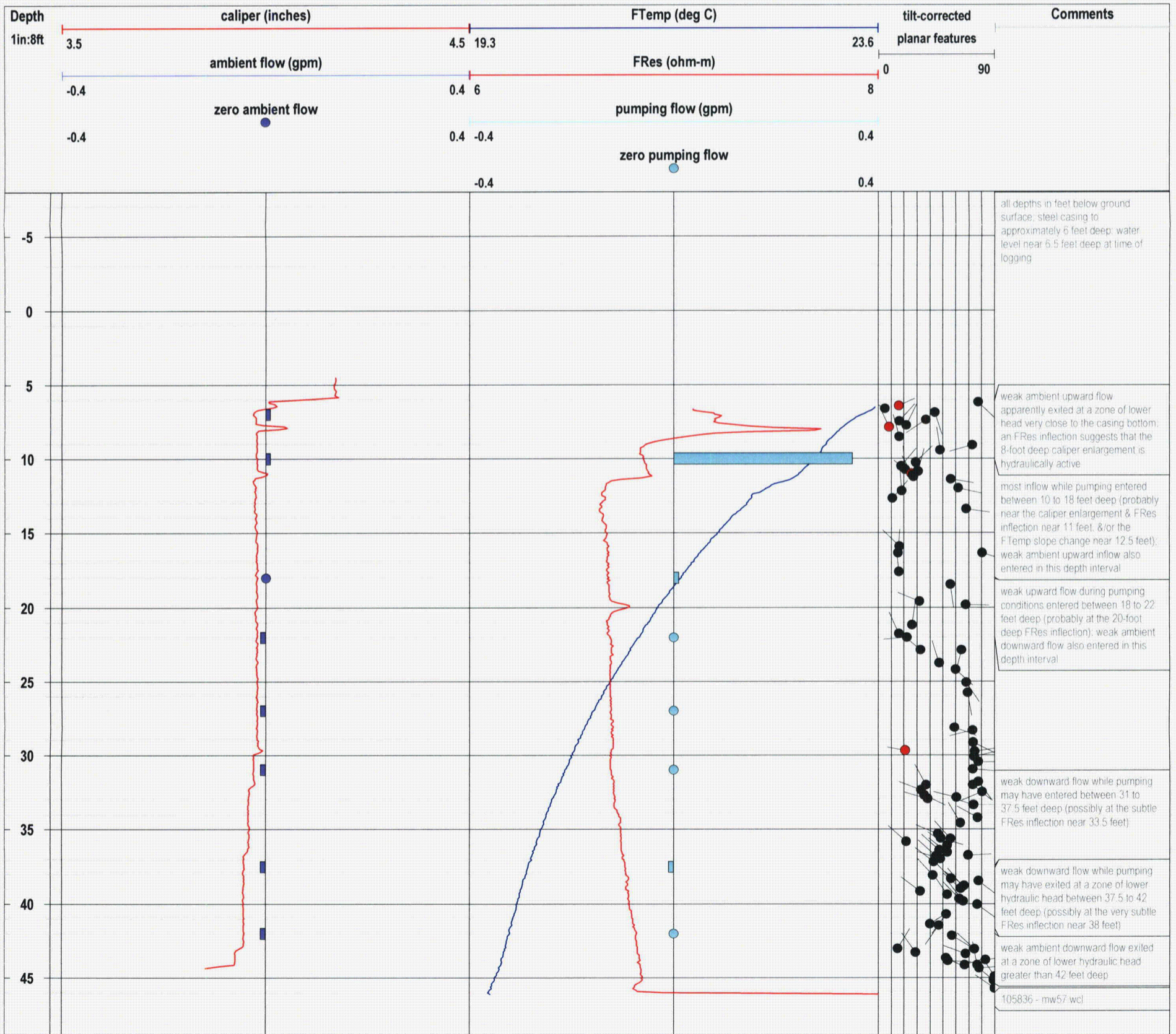




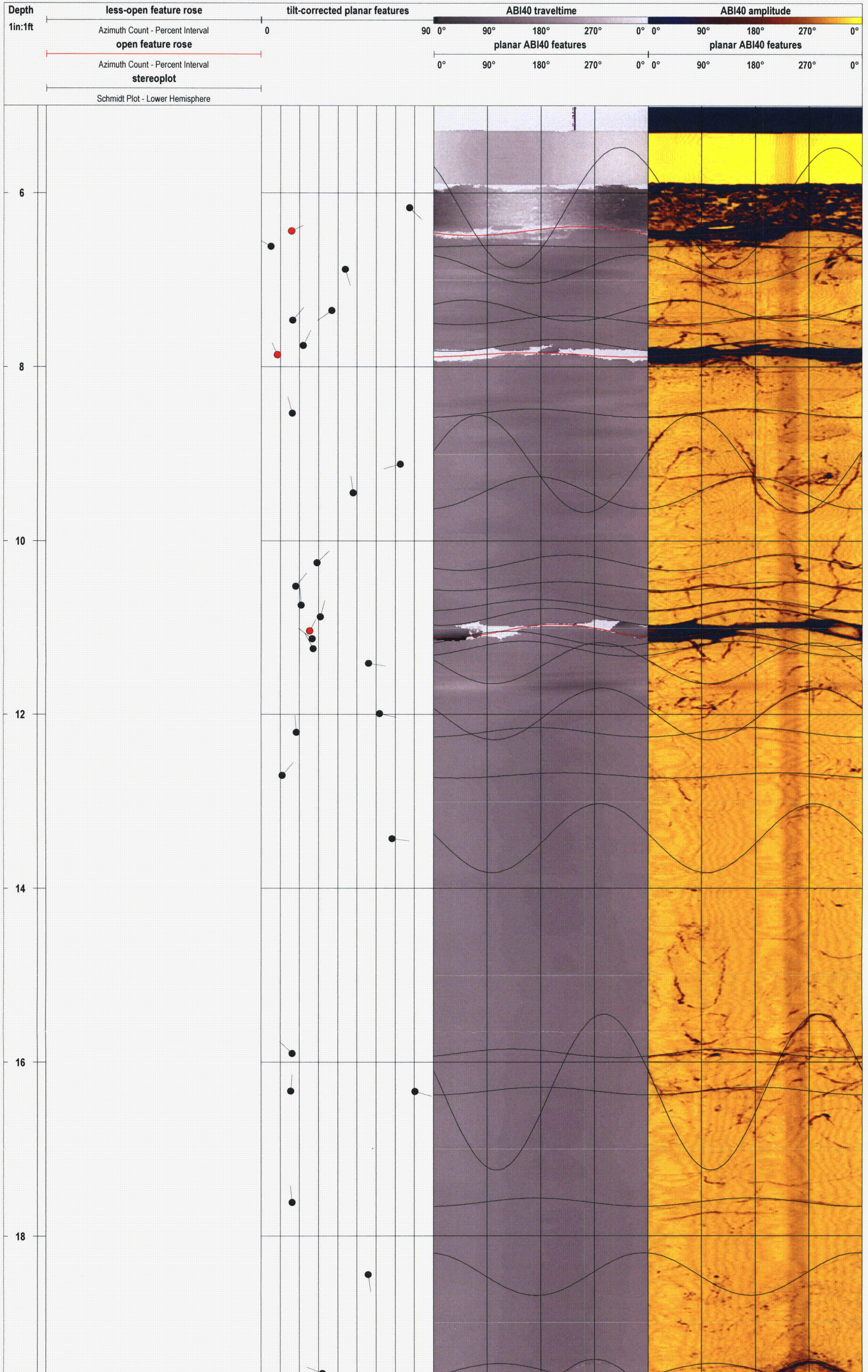


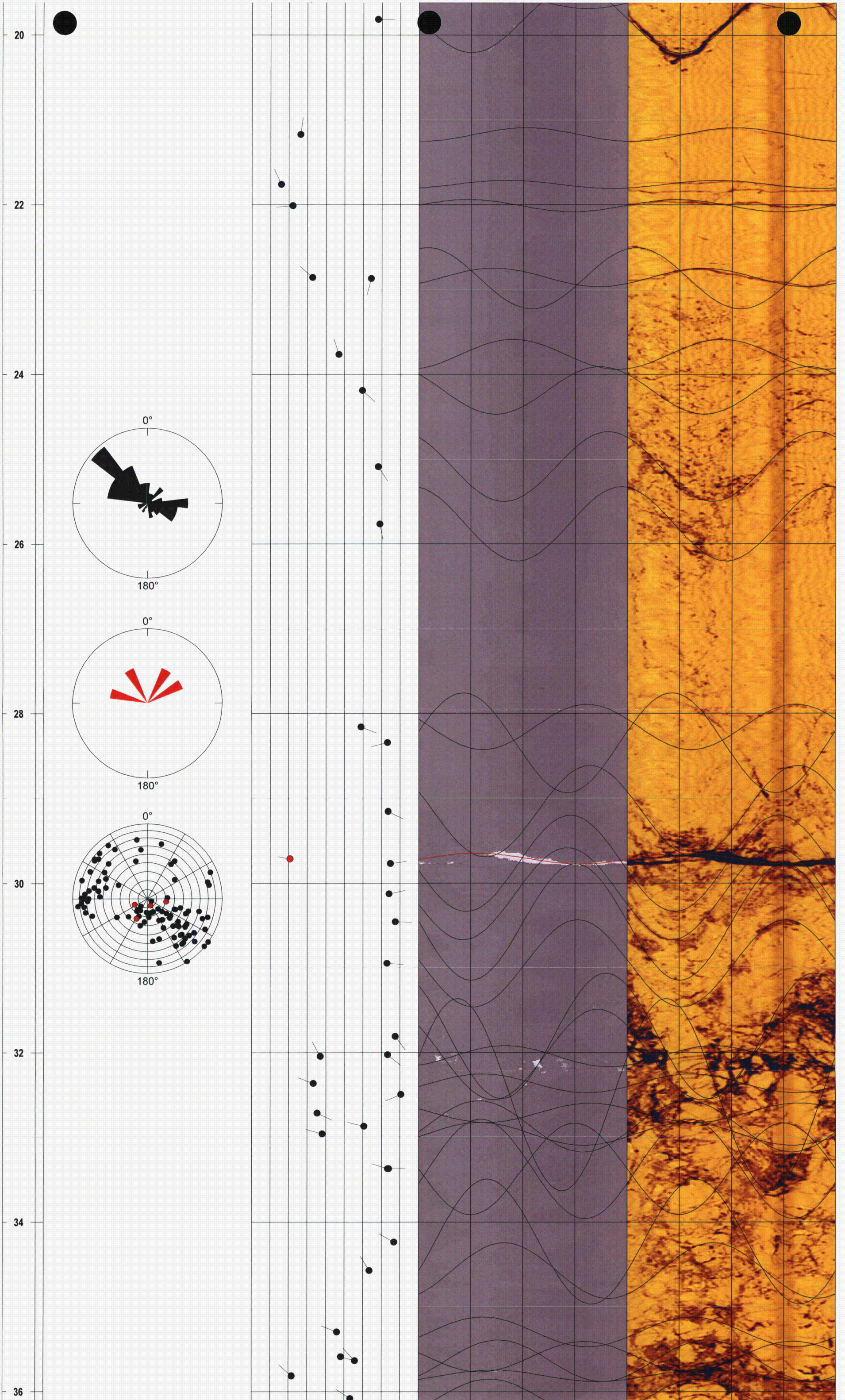


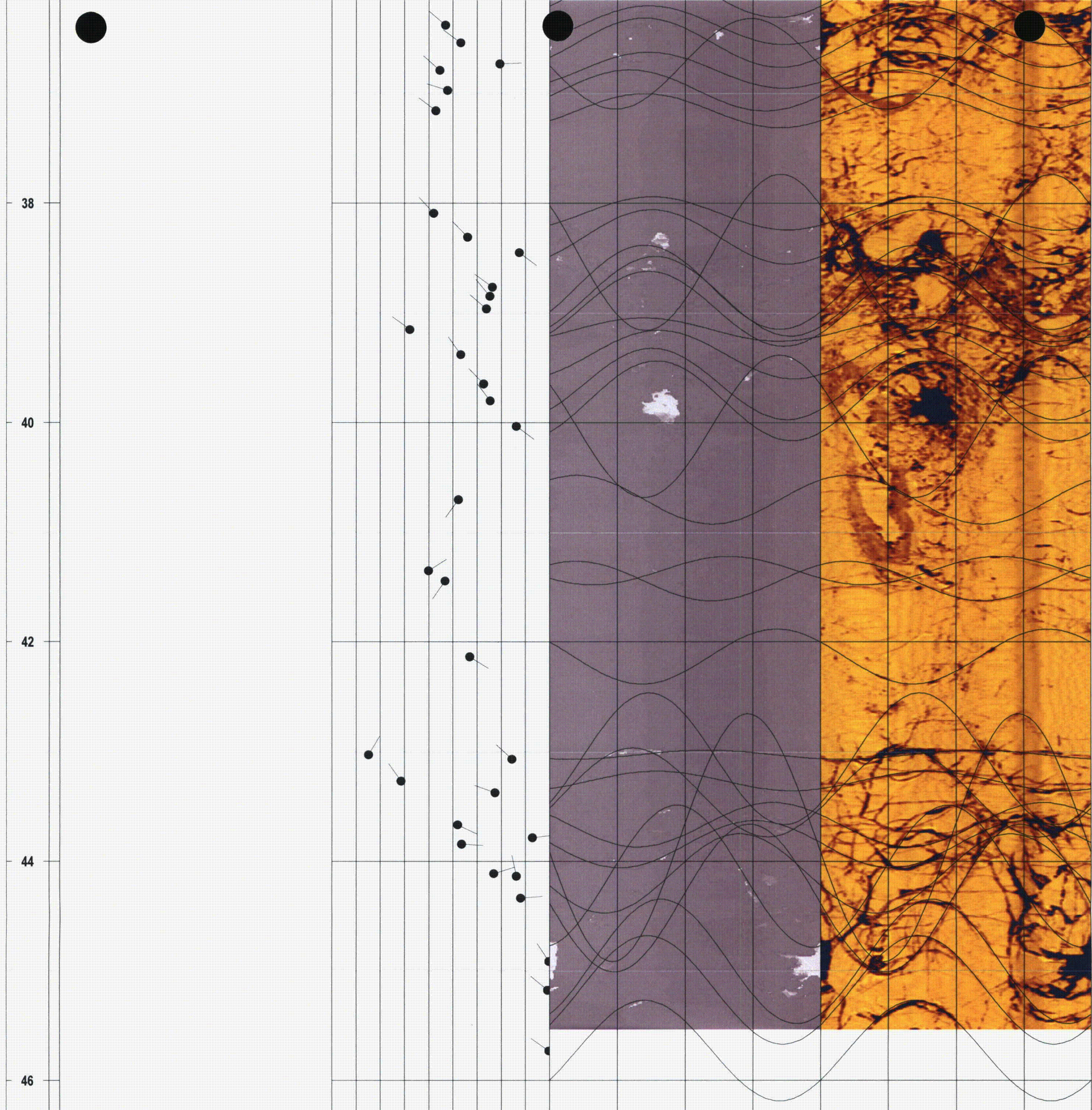
Project - Well: GZA / Buchanan, NY - MW-57 conventional logs



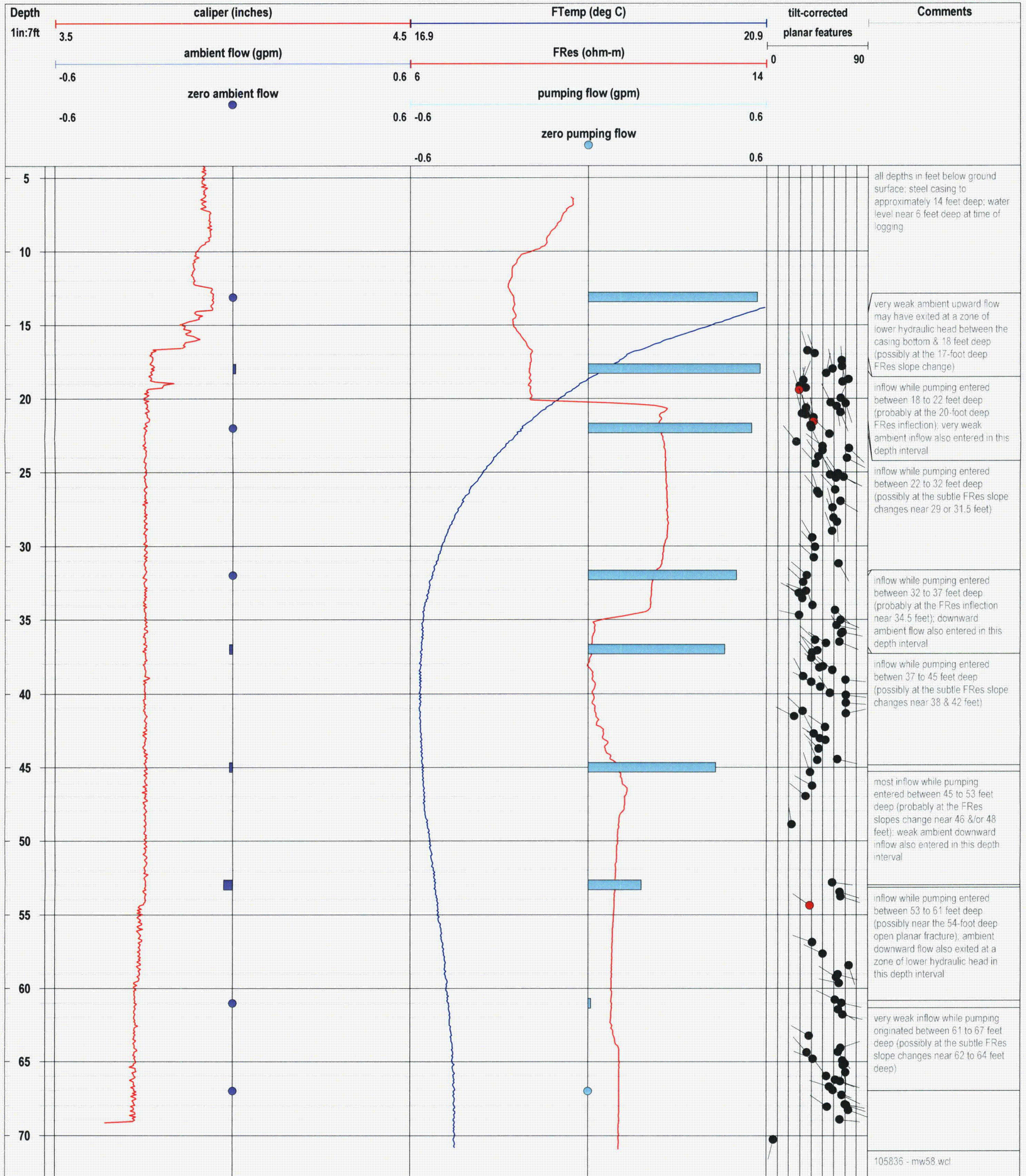
Project - Well: GZA / Buchanan, NY - MW-57 acoustic televiewer log







Project - Well: GZA / Buchanan, NY - MW-58 conventional logs



all depths in feet below ground surface: steel casing to approximately 14 feet deep; water level near 6 feet deep at time of logging

very weak ambient upward flow may have exited at a zone of lower hydraulic head between the casing bottom & 18 feet deep (possibly at the 17-foot deep FRes slope change)

inflow while pumping entered between 18 to 22 feet deep (probably at the 20-foot deep FRes inflection); very weak ambient inflow also entered in this depth interval

inflow while pumping entered between 22 to 32 feet deep (possibly at the subtle FRes slope changes near 29 or 31.5 feet)

inflow while pumping entered between 32 to 37 feet deep (probably at the FRes inflection near 34.5 feet); downward ambient flow also entered in this depth interval

inflow while pumping entered between 37 to 45 feet deep (possibly at the subtle FRes slope changes near 38 & 42 feet)

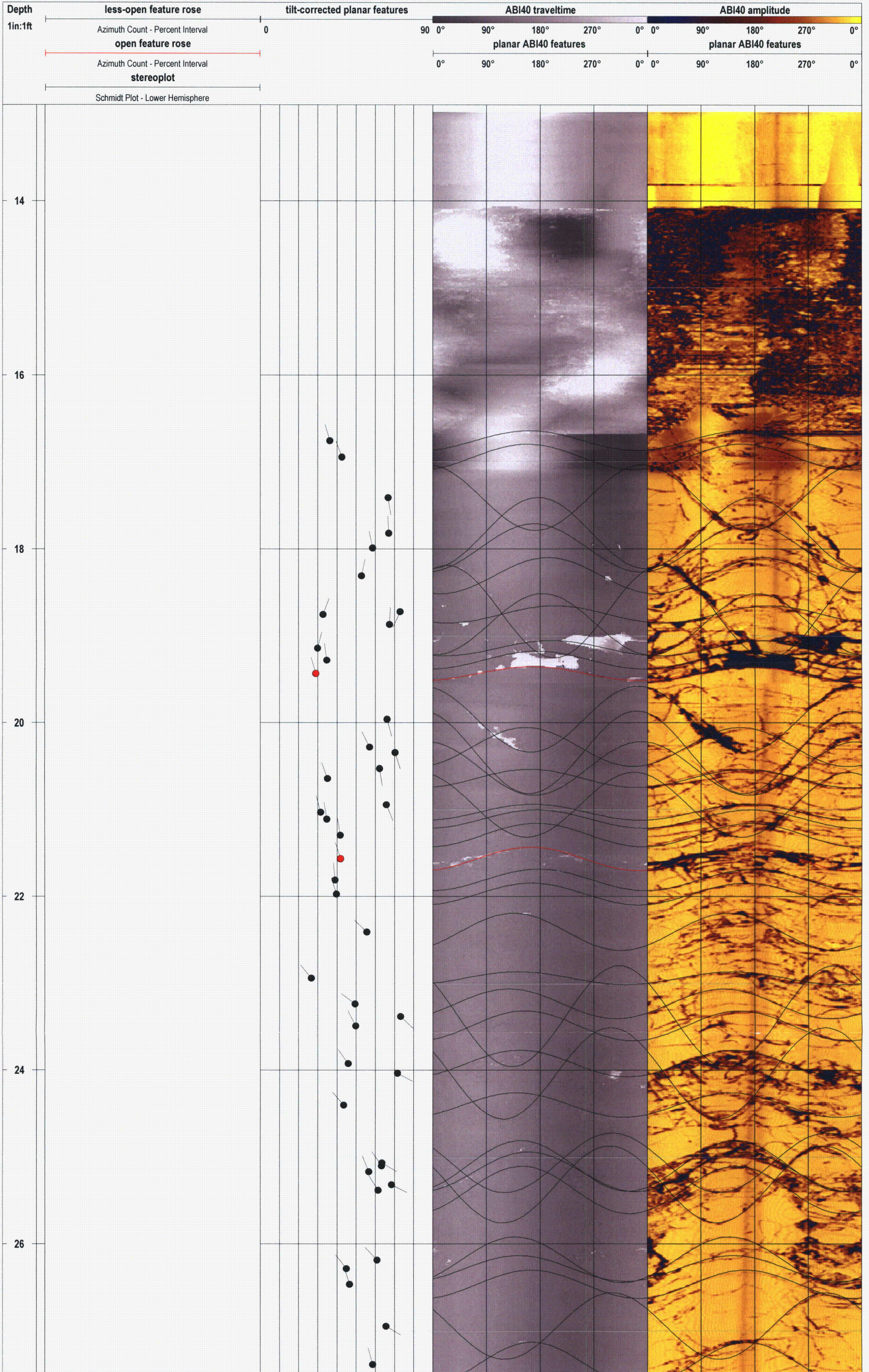
most inflow while pumping entered between 45 to 53 feet deep (probably at the FRes slopes change near 46 &/or 48 feet); weak ambient downward inflow also entered in this depth interval

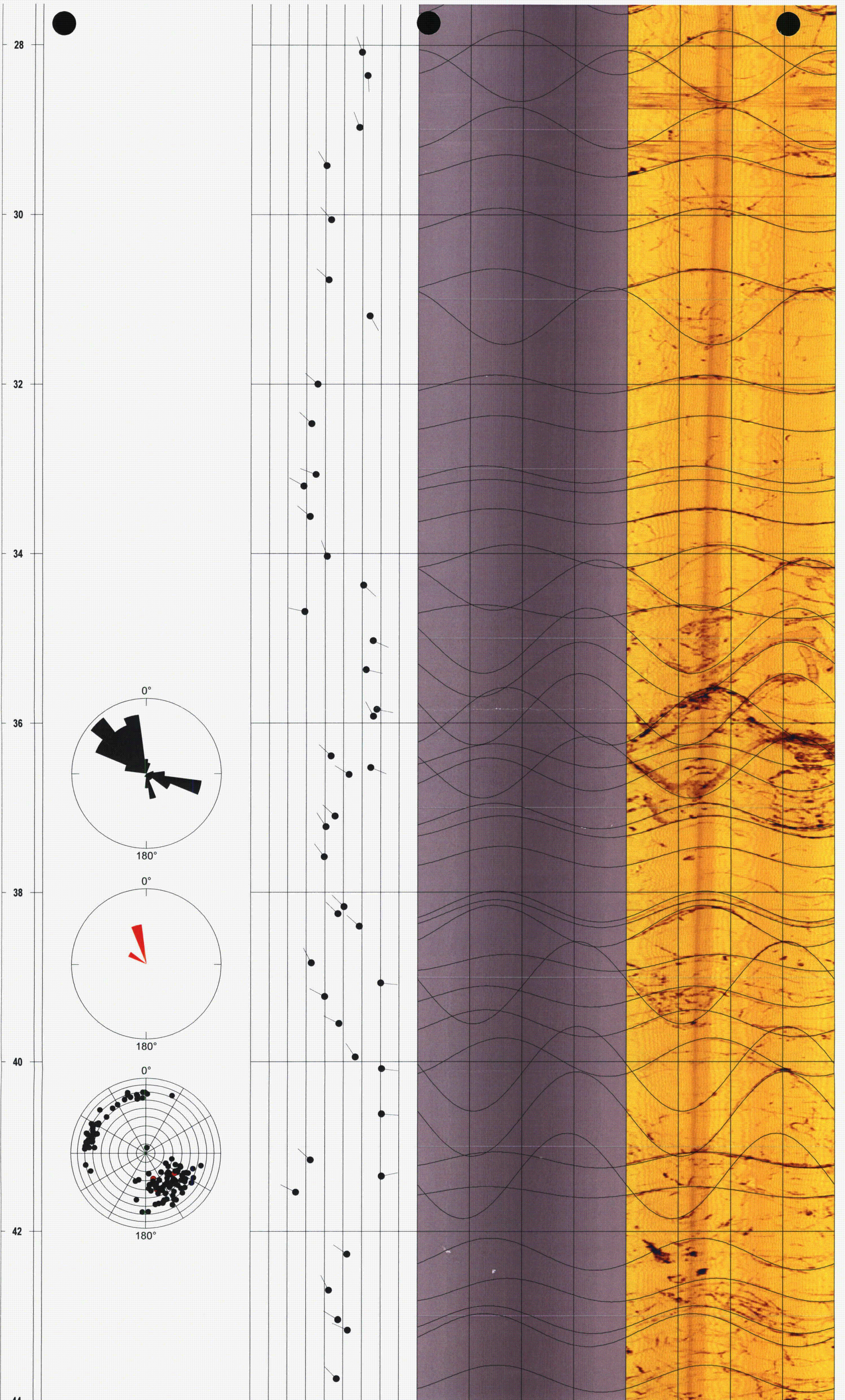
inflow while pumping entered between 53 to 61 feet deep (possibly near the 54-foot deep open planar fracture); ambient downward flow also exited at a zone of lower hydraulic head in this depth interval

very weak inflow while pumping originated between 61 to 67 feet deep (possibly at the subtle FRes slope changes near 62 to 64 feet deep)

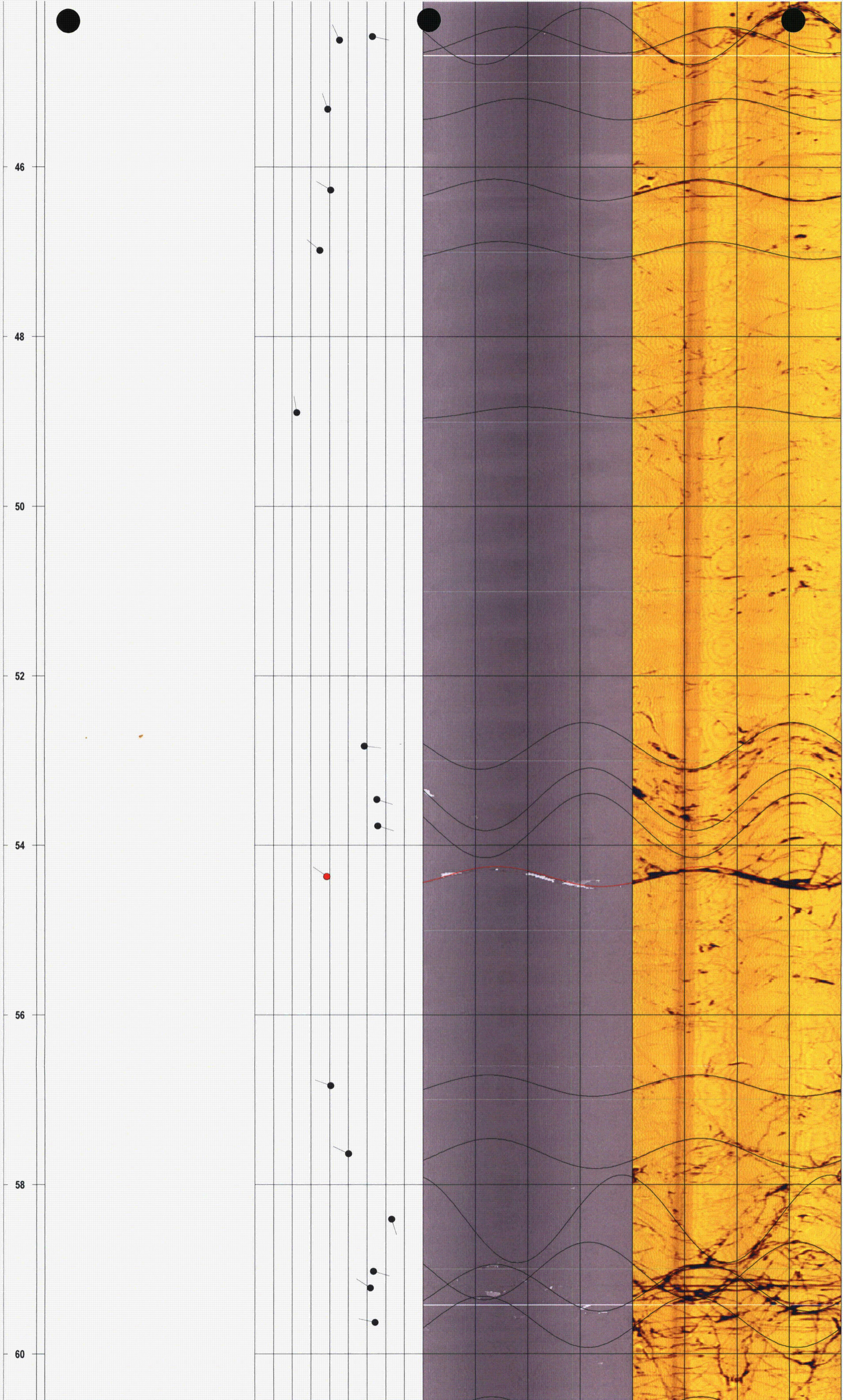
105836 - mw58.wcl

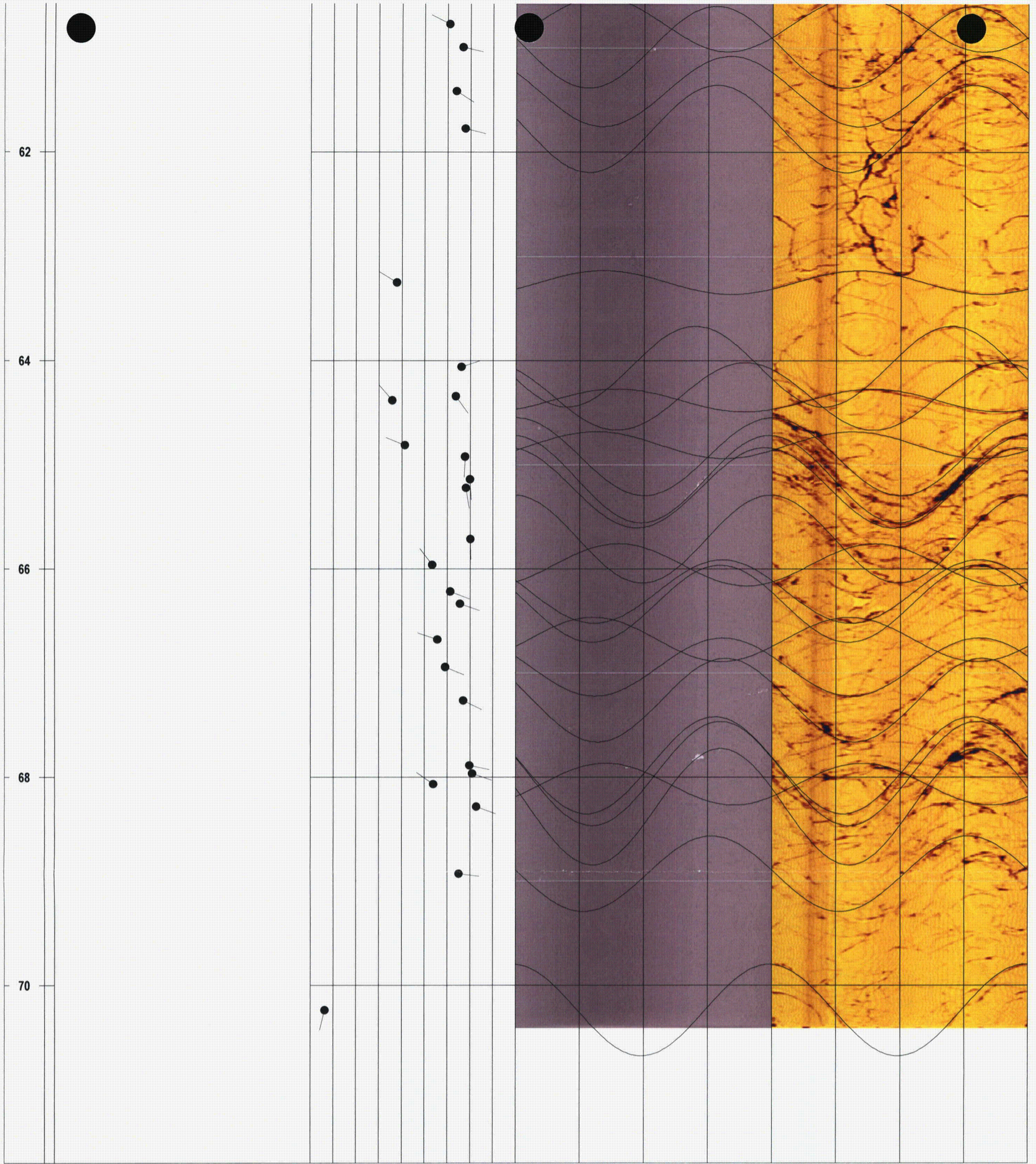
Project - Well: GZA / Buchanan, NY - MW-58 acoustic televiewer log



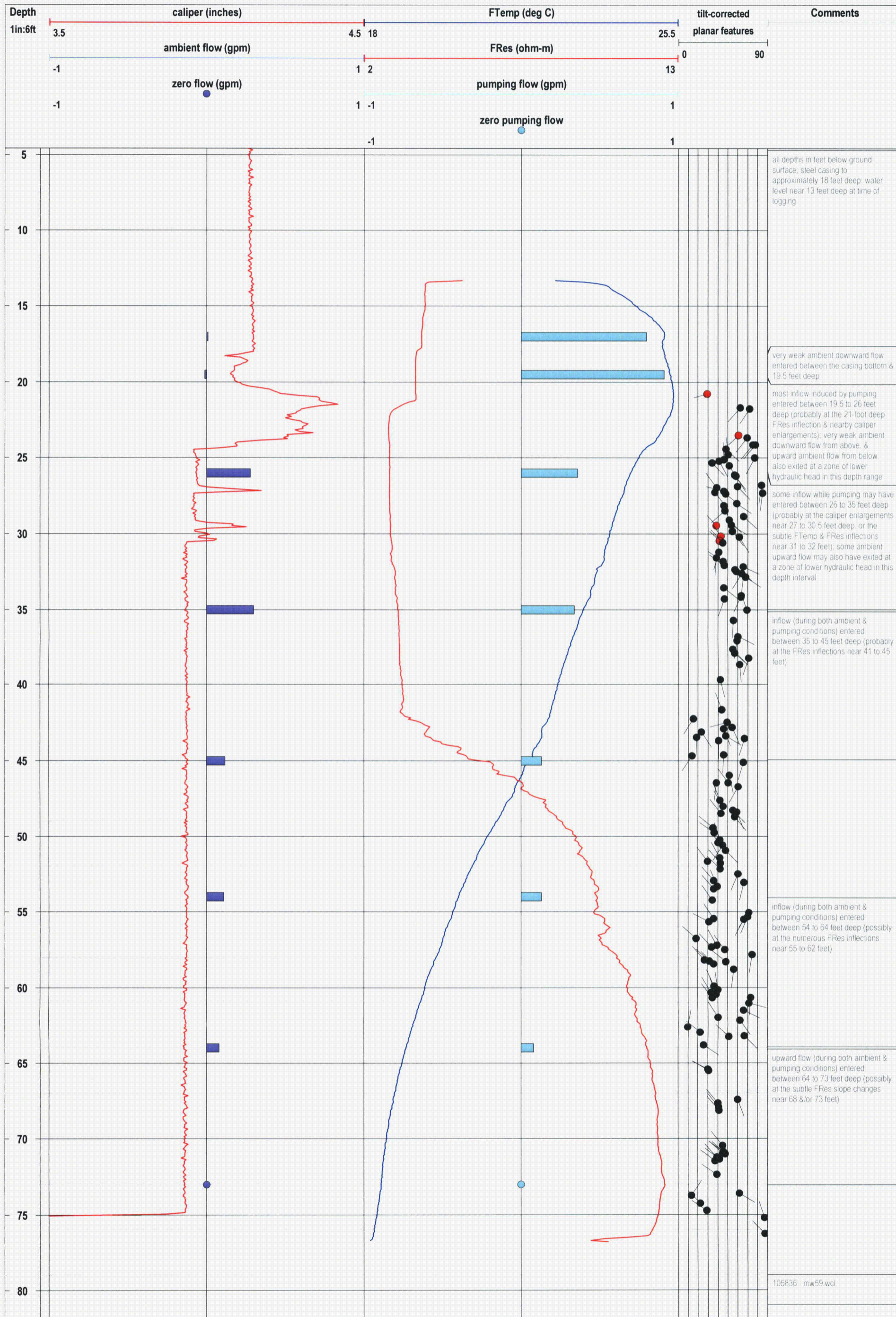








Project - Well: GZA / Buchanan, NY - MW-59 conventional logs



Project - Well: GZA / Buchanan, NY - MW-59 optical & acoustic televiewer log

