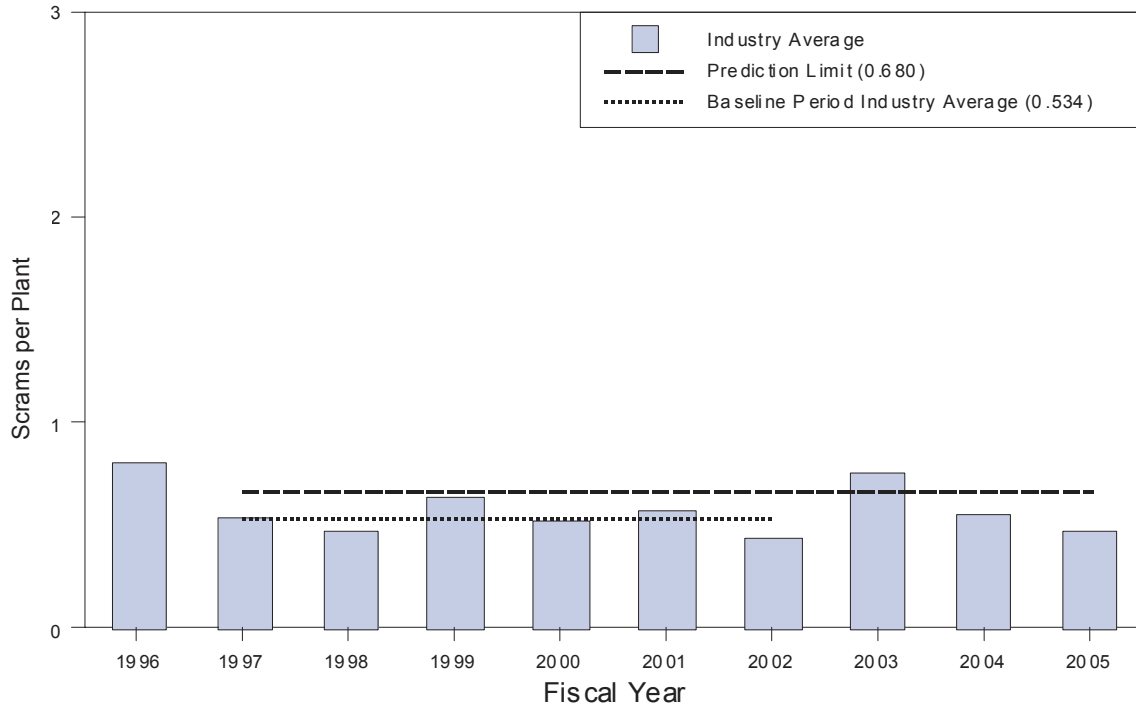
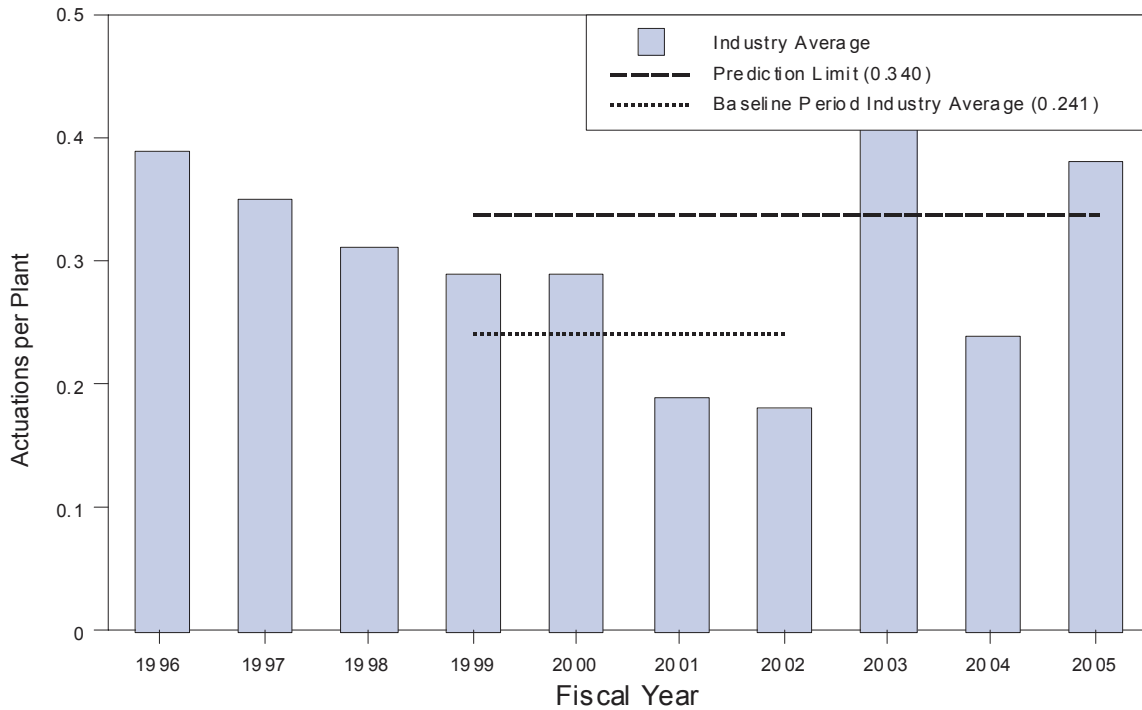


FY 2005 Short-Term Industry Trend Results

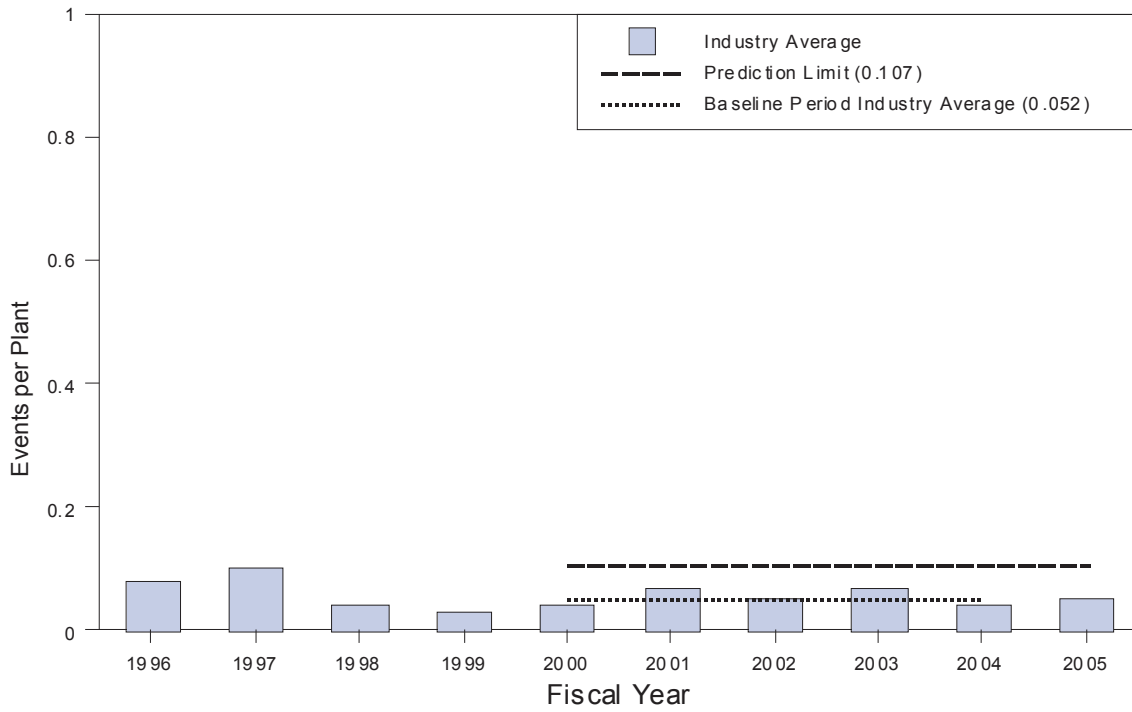
Automatic Scrams While Critical



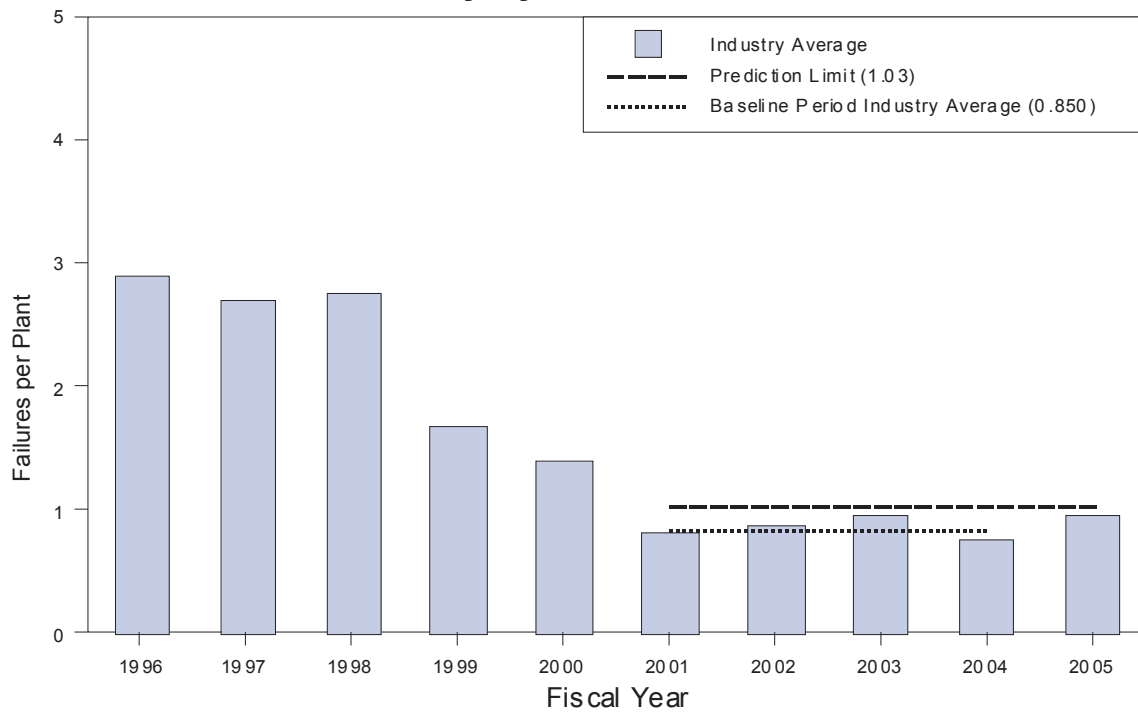
Safety System Actuations



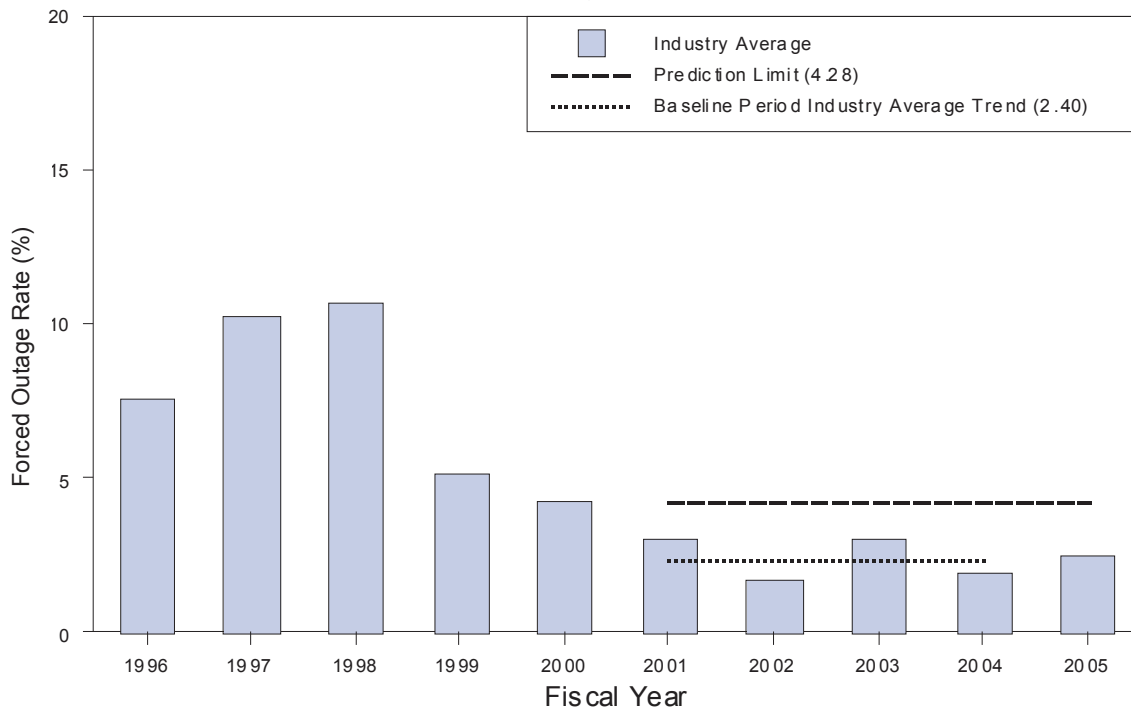
Significant Events



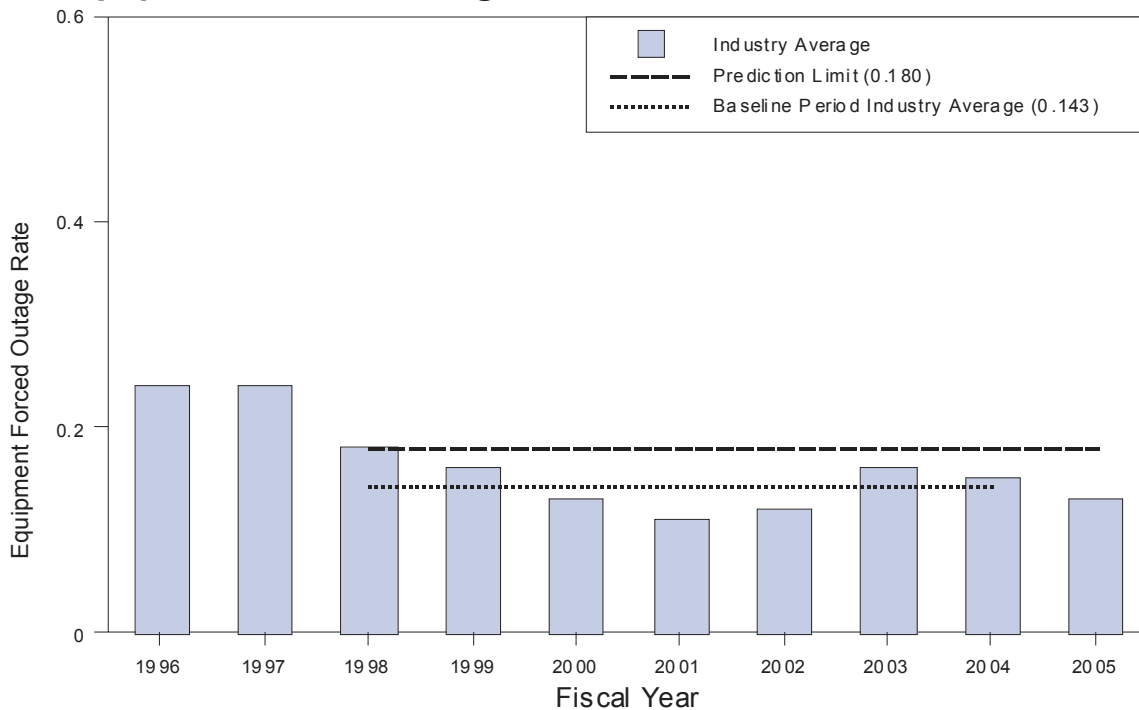
Safety System Failures



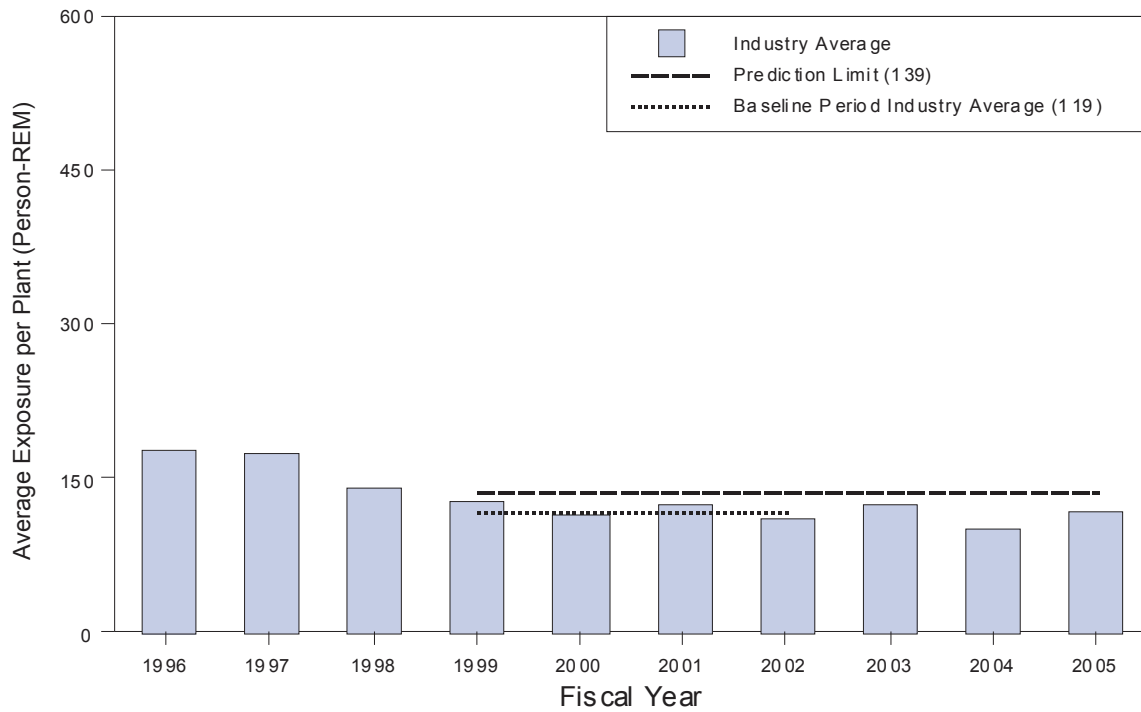
Forced Outage Rate (%)



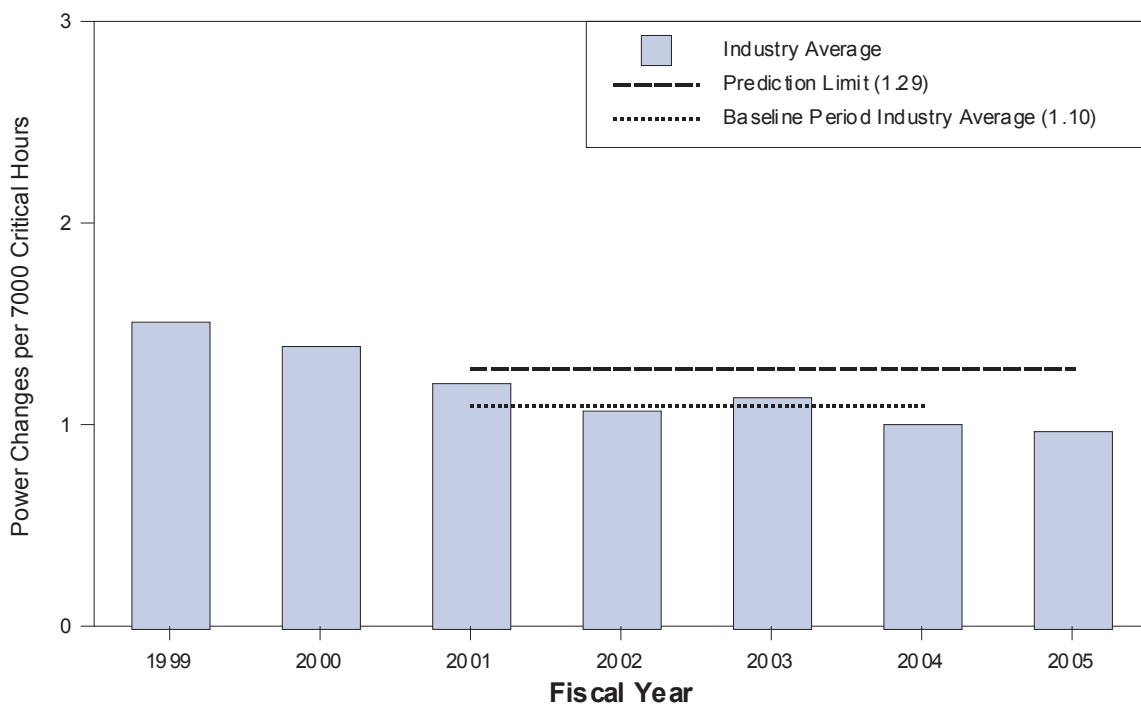
Equipment Forced Outages/1000 Commercial Critical Hours



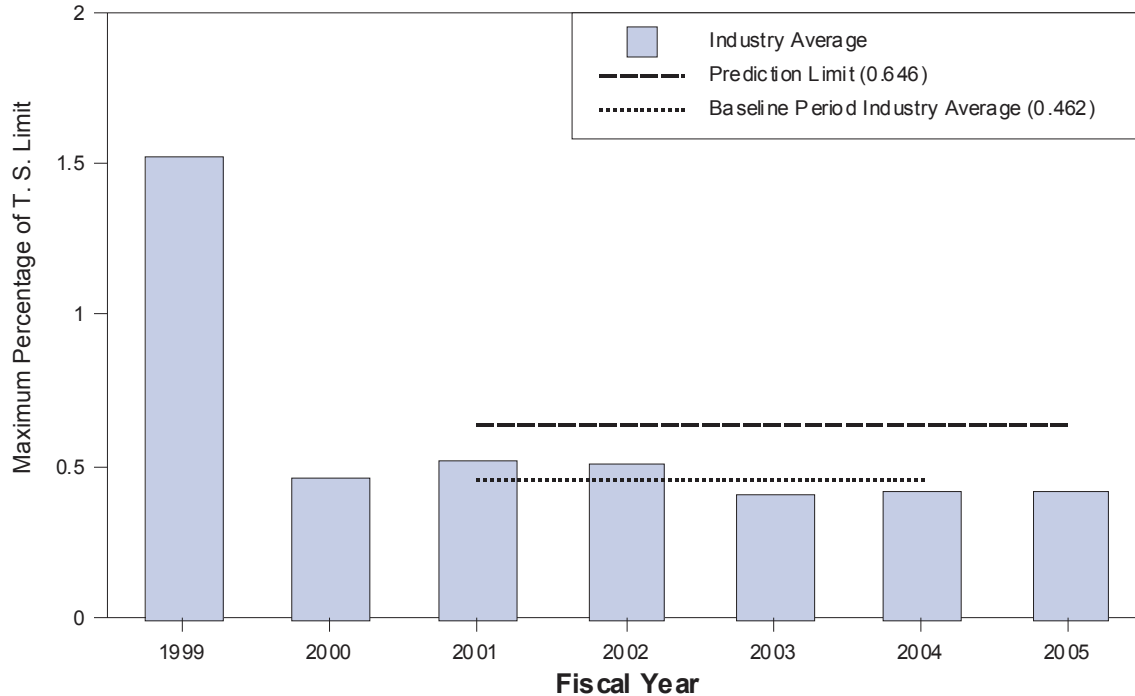
Collective Radiation Exposure



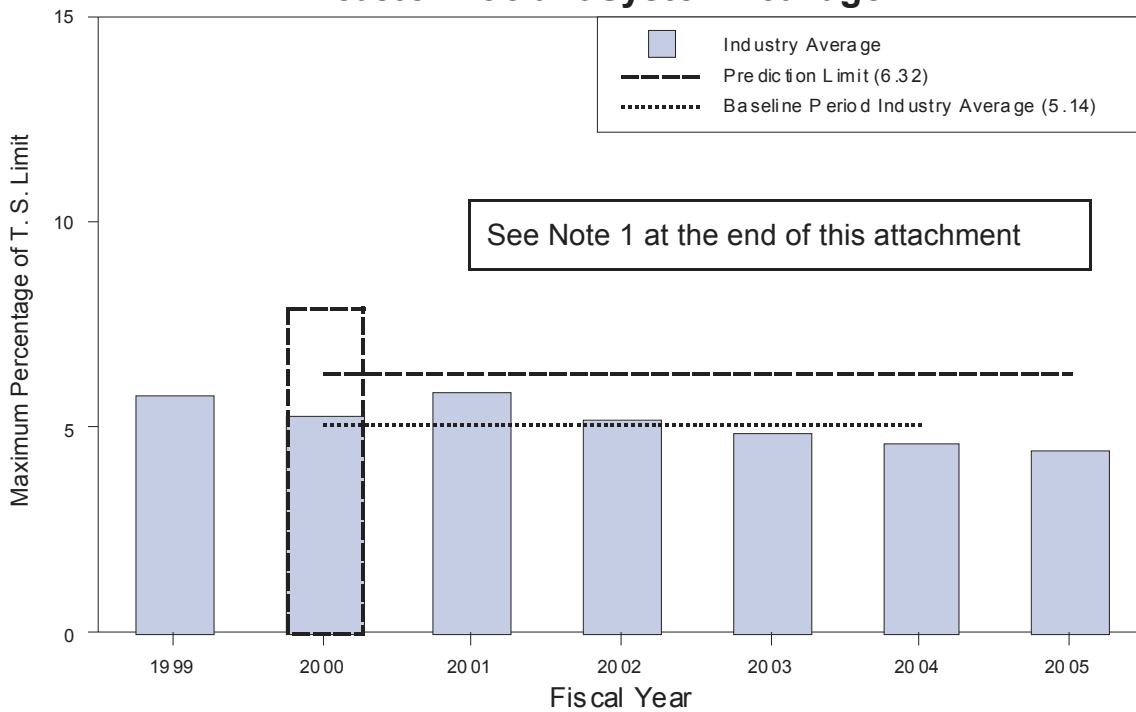
Unplanned Power Changes



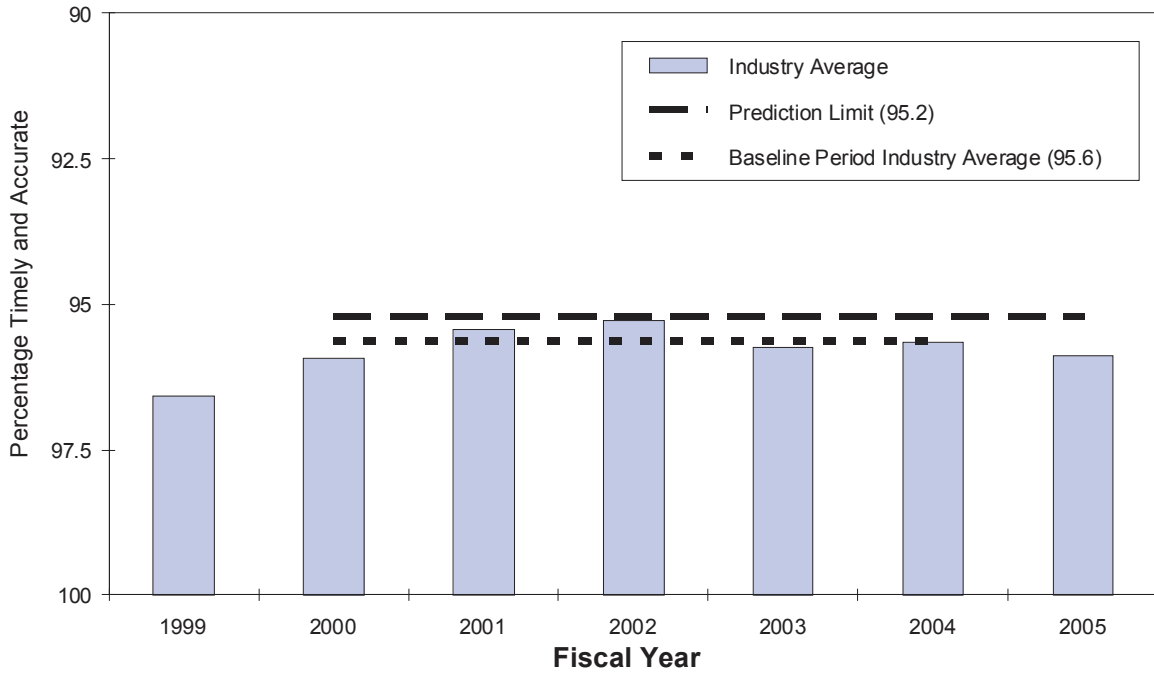
Reactor Coolant System Activity



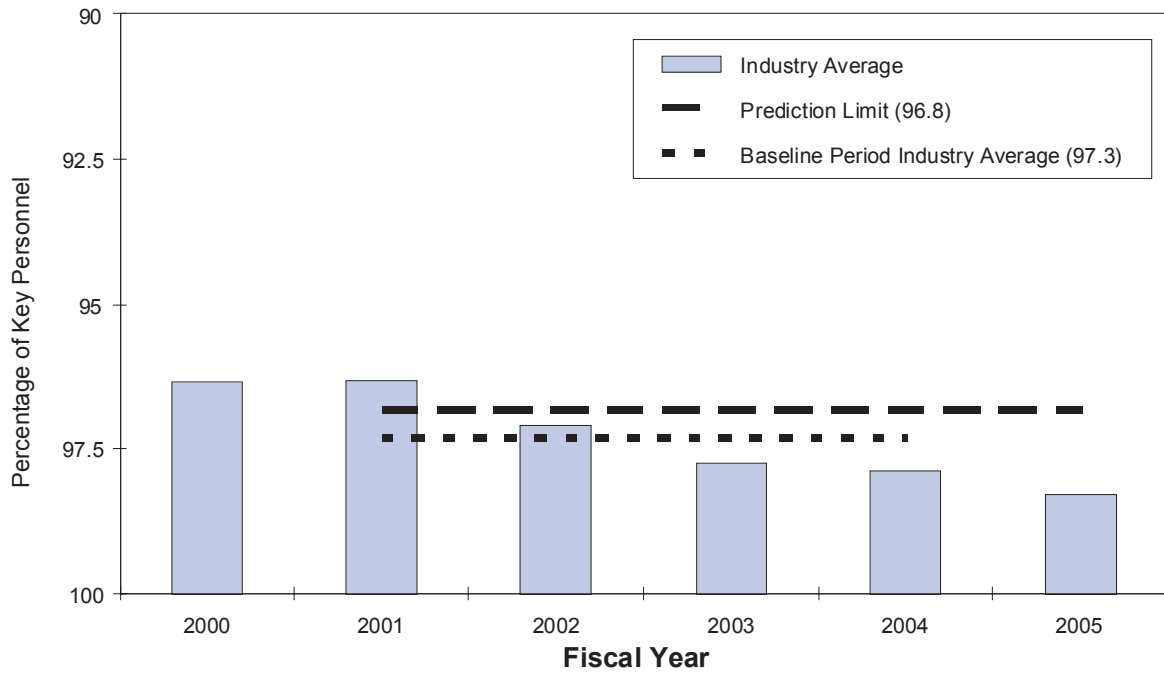
Reactor Coolant System Leakage



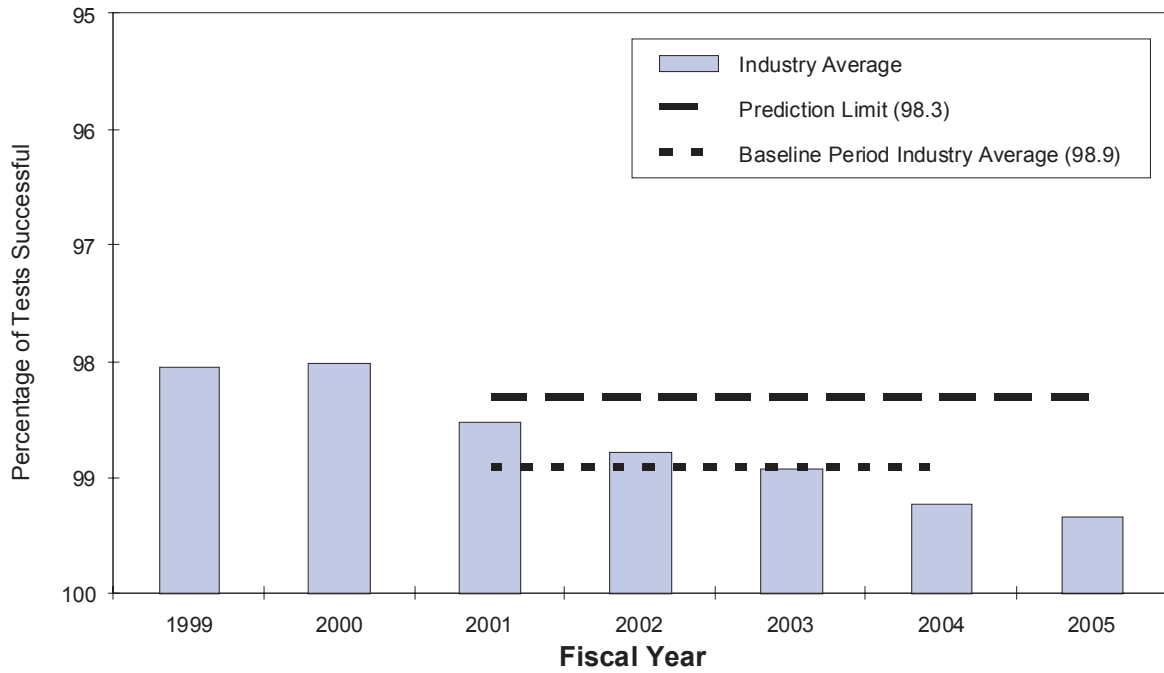
Drill/Exercise Performance



ERO Drill Participation



Alert and Notification System Reliability



Reactor Coolant System Leakage

Note 1: The Indian Point 2 steam generator tube rupture event was removed from FY2000 industry trend data for the purpose of determining the short term prediction limit. The event was removed because it was an occurrence at a single unit that overly influenced the statistical analysis of the industry wide data. Removing this event resulted in a lower prediction limit.